

PHENTERMINE HYDROCHLORIDE- phentermine hydrochloride capsule

PD-Rx Pharmaceuticals, Inc.

HIGHLIGHTS OF PRESCRIBING INFORMATION

These highlights do not include all the information needed to use Phentermine Hydrochloride Capsules, USP safely and effectively. See full prescribing information for Phentermine Hydrochloride Capsules, USP.
Phentermine Hydrochloride Capsules, USP CIV for oral use
Initial U.S. Approval: 1959

INDICATIONS AND USAGE

Phentermine Hydrochloride is a sympathomimetic amine anorectic indicated as a short-term adjunct (a few weeks) in a regimen of weight reduction based on exercise, behavioral modification and caloric restriction in the management of exogenous obesity for patients with an initial body mass index greater than or equal to 30 kg/m², or greater than or equal to 27 kg/m² in the presence of other risk factors (e.g., controlled hypertension, diabetes, hyperlipidemia). (1)

The limited usefulness of agents of this class, including Phentermine hydrochloride, should be measured against possible risk factors inherent in their use. (1)

DOSAGE AND ADMINISTRATION

- Dosage should be individualized to obtain an adequate response with the lowest effective dose. (2.1)
- Late evening administration should be avoided (risk of insomnia). (2.1)
- Phentermine Hydrochloride can be taken with or without food. (2.1)
- Limit the dosage to 15 mg daily for patients with severe renal impairment (eGFR 15 to 29 mL/min/1.73 m²) (2.2)

DOSAGE FORMS AND STRENGTHS

- Capsules containing 15 mg and 30 mg Phentermine Hydrochloride. (3)

CONTRAINDICATIONS

- History of cardiovascular disease (e.g., coronary artery disease, stroke, arrhythmias, congestive heart failure, uncontrolled hypertension) (4)
- During or within 14 days following the administration of monoamine oxidase inhibitors (4)
- Hyperthyroidism (4)
- Glaucoma (4)
- Agitated states (4)
- History of drug abuse (4)
- Pregnancy (4, 8.1)
- Nursing (4, 8.3)
- Known hypersensitivity, or idiosyncrasy to the sympathomimetic amines (4)

WARNINGS AND PRECAUTIONS

- Coadministration with other drugs for weight loss is not recommended (safety and efficacy of combination not established). (5.1)
- Rare cases of primary pulmonary hypertension have been reported. Phentermine should be discontinued in case of new, unexplained symptoms of dyspnea, angina pectoris, syncope or lower extremity edema. (5.2)
- Rare cases of serious regurgitant cardiac valvular disease have been reported. (5.3)
- Tolerance to the anorectic effect usually develops within a few weeks. If this occurs, phentermine should be discontinued. The recommended dose should not be exceeded. (5.4)
- Phentermine may impair the ability of the patient to engage in potentially hazardous activities such as operating machinery or driving a motor vehicle. (5.5)
- Risk of abuse and dependence. The least amount feasible should be prescribed or dispensed at one time in order to minimize the possibility of overdose. (5.6)
- Concomitant alcohol use may result in an adverse drug reaction. (5.7)
- Use caution in patients with even mild hypertension (risk of increase in blood pressure). (5.8)
- A reduction in dose of insulin or oral hypoglycemic medication may be required in some patients. (5.9)

ADVERSE REACTIONS

Adverse events have been reported in the cardiovascular, central nervous, gastrointestinal, allergic, and endocrine systems. (6)

To report SUSPECTED ADVERSE REACTIONS, contact KVK-TECH, Inc., at 215-579-1842 or customerservice@kvktech.com; or FDA at 1-800-FDA-1088 or www.fda.gov/medwatch.

----- **DRUG INTERACTIONS** -----

- Monoamine oxidase inhibitors: Risk of hypertensive crisis. (4, 7.1)
- Alcohol: Consider potential interaction (7.2)
- Insulin and oral hypoglycemics: Requirements may be altered. (7.3)
- Adrenergic neuron blocking drugs: Hypotensive effect may be decreased by phentermine. (7.4)

----- **USE IN SPECIFIC POPULATIONS** -----

- Nursing mothers: Discontinue drug or nursing taking into consideration importance of drug to mother. (4, 8.3)
- Pediatric use: Safety and effectiveness not established. (8.4)
- Geriatric use: Due to substantial renal excretion, use with caution. (8.5)
- Renal Impairment: Avoid use in patients with eGFR less than 15 mL/min/m² or end-stage renal disease requiring dialysis. (8.6)

See 17 for PATIENT COUNSELING INFORMATION.

Revised: 12/2018

FULL PRESCRIBING INFORMATION: CONTENTS*

1 INDICATIONS AND USAGE

2 DOSAGE AND ADMINISTRATION

2.1 Exogenous Obesity

2.2 Dosage in Patients With Renal Impairment

3 DOSAGE FORMS AND STRENGTHS

4 CONTRAINDICATIONS

5 WARNINGS AND PRECAUTIONS

5.1 Coadministration with Other Drug Products for Weight Loss

5.2 Primary Pulmonary Hypertension

5.3 Valvular Heart Disease

5.4 Development of Tolerance, Discontinuation in Case of Tolerance

5.5 Effect on the Ability to Engage in Potentially Hazardous Tasks

5.6 Risk of Abuse and Dependence

5.7 Usage with Alcohol

5.8 Use in Patients with Hypertension

5.9 Use in Patients on Insulin or Oral Hypoglycemic Medications for Diabetes Mellitus

6 ADVERSE REACTIONS

7 DRUG INTERACTIONS

7.1 Monoamine Oxidase Inhibitors

7.2 Alcohol

7.3 Insulin and Oral Hypoglycemic Medications

7.4 Adrenergic Neuron Blocking Drugs

8 USE IN SPECIFIC POPULATIONS

8.1 Pregnancy

8.3 Nursing Mothers

8.4 Pediatric Use

- 8.5 Geriatric Use
- 8.6 Renal Impairment
- 9 DRUG ABUSE AND DEPENDENCE
 - 9.1 Controlled Substance
- 10 OVERDOSAGE
 - 10.1 Acute Overdosage
- 11 DESCRIPTION
- 12 CLINICAL PHARMACOLOGY
 - 12.1 Mechanism of Action
- 13 NONCLINICAL TOXICOLOGY
 - 13.1 Carcinogenesis, Mutagenesis, Impairment of Fertility
- 14 CLINICAL STUDIES
- 16 HOW SUPPLIED/STORAGE AND HANDLING
- 17 PATIENT COUNSELING INFORMATION

* Sections or subsections omitted from the full prescribing information are not listed.

FULL PRESCRIBING INFORMATION

1 INDICATIONS AND USAGE

Phentermine Hydrochloride, USP 15 mg and 30 mg is indicated as a short-term (a few weeks) adjunct in a regimen of weight reduction based on exercise, behavioral modification and caloric restriction in the management of exogenous obesity for patients with an initial body mass index greater than or equal to 30 kg/m^2 , or greater than or equal to 27 kg/m^2 in the presence of other risk factors (e.g., controlled hypertension, diabetes, hyperlipidemia).

Below is a chart of Body Mass Index (BMI) based on various heights and weights.

BMI is calculated by taking the patient's weight, in kilograms (kg), divided by the patient's height, in meters (m), squared. Metric conversions are as follows: pounds \div 2.2 = kg; inches \times 0.0254 = meters.

BODY MASS INDEX(BMI) kg/m²

	Height (feet, inches)					
Weight (pounds)	5'0"	5'3"	5'6"	5'9"	6'0"	6'3"
140	27	25	23	21	19	18
150	29	27	24	22	20	19
160	31	28	26	24	22	20
170	33	30	28	25	23	21
180	35	32	29	27	25	23
190	37	34	31	28	26	24
200	39	36	32	30	27	25
210	41	37	34	31	29	26
220	43	39	36	33	30	28
230	45	41	37	34	31	29
240	47	43	39	36	33	30
250	49	44	40	37	34	31

The limited usefulness of agents of this class, including Phentermine hydrochloride, [see *CLINICAL PHARMACOLOGY (12.1,12.2)*] should be measured against possible risk factors inherent in their use such as those described below.

2 DOSAGE AND ADMINISTRATION

2.1 Exogenous Obesity

Dosage should be individualized to obtain an adequate response with the lowest effective dose.

The usual adult dose is 15 mg to 30 mg at approximately 2 hours after breakfast for appetite control. Late evening medication should be avoided because of the possibility of resulting insomnia. Administration of one capsule (30 mg) daily has been found to be adequate in depression of the appetite for 12 to 14 hours.

Phentermine is not recommended for use in patients 16 years of age and under.

Late Evening medication should be avoided because of the possibility of resulting insomnia.

2.2 Dosage in Patients With Renal Impairment

The recommended maximum dosage of phentermine hydrochloride is 15 mg daily for patients with severe renal impairments (eGFR 15 to 29 mL/min/1.73 m²). Avoid use of phentermine hydrochloride in patients with eGFR less than 15 mL/min/1.73 m² or end-stage renal disease requiring dialysis [see *Use in Specific Populations (8.6) and Clinical Pharmacology (12.3)*].

3 DOSAGE FORMS AND STRENGTHS

Capsules containing 15 mg and 30 mg Phentermine Hydrochloride

4 CONTRAINDICATIONS

- History of cardiovascular disease (e.g., coronary artery disease, stroke, arrhythmias, congestive heart failure, uncontrolled hypertension)
- During or within 14 days following the administration of monoamine oxidase inhibitors
- Hyperthyroidism
- Glaucoma
- Agitated states
- History of drug abuse
- Pregnancy [*see Use in Specific Populations (8.1)*]
- Nursing [*see Use in Specific Populations (8.3)*]
- Known hypersensitivity, or idiosyncrasy to the sympathomimetic amines

5 WARNINGS AND PRECAUTIONS

5.1 Coadministration with Other Drug Products for Weight Loss

Phentermine is indicated only as short-term (a few weeks) monotherapy for the management of exogenous obesity. The safety and efficacy of combination therapy with phentermine and any other drug products for weight loss including prescribed drugs, over-the-counter preparations, and herbal products, or serotonergic agents such as selective serotonin reuptake inhibitors (e.g., fluoxetine, sertraline, fluvoxamine, paroxetine), have not been established. Therefore, coadministration of phentermine and these drug products is not recommended.

5.2 Primary Pulmonary Hypertension

Primary Pulmonary Hypertension (PPH) - a rare, frequently fatal disease of the lungs - has been reported to occur in patients receiving a combination of phentermine with fenfluramine or dexfenfluramine. The possibility of an association between PPH and the use of phentermine alone cannot be ruled out; there have been rare cases of PPH in patients who reportedly have taken phentermine alone. The initial symptom of PPH is usually dyspnea. Other initial symptoms may include angina pectoris, syncope or lower extremity edema. Patients should be advised to report immediately any deterioration in exercise tolerance. Treatment should be discontinued in patients who develop new, unexplained symptoms of dyspnea, angina pectoris, syncope or lower extremity edema, and patients should be evaluated for the possible presence of pulmonary hypertension.

5.3 Valvular Heart Disease

Serious regurgitant cardiac valvular disease, primarily affecting the mitral, aortic and/or tricuspid valves, has been reported in otherwise healthy persons who had taken a combination of phentermine with fenfluramine or dexfenfluramine for weight loss. The possible role of phentermine in the etiology of these valvulopathies has not been established and their course in individuals after the drugs are stopped is not known. The possibility of an

association between valvular heart disease and the use of phentermine alone cannot be ruled out; there have been rare cases of valvular heart disease in patients who reportedly have taken phentermine alone.

5.4 Development of Tolerance, Discontinuation in Case of Tolerance

When tolerance to the anorectant effect develops, the recommended dose should not be exceeded in an attempt to increase the effect; rather, the drug should be discontinued.

5.5 Effect on the Ability to Engage in Potentially Hazardous Tasks

Phentermine may impair the ability of the patient to engage in potentially hazardous activities such as operating machinery or driving a motor vehicle; the patient should therefore be cautioned accordingly.

5.6 Risk of Abuse and Dependence

Phentermine is related chemically and pharmacologically to amphetamine (d- and d/l-amphetamine) and other related stimulant drugs have been extensively abused. The possibility of abuse of phentermine should be kept in mind when evaluating the desirability of including a drug as part of a weight reduction program. *See Drug Abuse and Dependence (9) and Overdosage (10) .*

The least amount feasible should be prescribed or dispensed at one time in order to minimize the possibility of overdose.

5.7 Usage with Alcohol

Concomitant use of alcohol with Phentermine may result in an adverse drug reaction.

5.8 Use in Patients with Hypertension

Use caution in prescribing Phentermine for patients with even mild hypertension (risk of increase in blood pressure).

5.9 Use in Patients on Insulin or Oral Hypoglycemic Medications for Diabetes Mellitus

A reduction in insulin or oral hypoglycemic medications in patients with diabetes mellitus may be required.

6 ADVERSE REACTIONS

The following adverse reactions are described, or described in greater detail, in other sections:

- Primary pulmonary hypertension [*see Warnings and Precautions (5.2)]*
- Valvular heart disease [*see Warnings and Precautions (5.3)]*
- Effect on the ability to engage in potentially hazardous tasks [*see Warnings and Precautions (5.5)]*
- Withdrawal effects following prolonged high dosage administration [*see Drug Abuse and Dependence (9.3)]*

The following adverse reactions to phentermine have been identified:

Cardiovascular:Primary pulmonary hypertension and/or regurgitant cardiac valvular disease, palpitation, tachycardia, elevation of blood pressure, ischemic events.

Central Nervous System:Overstimulation, restlessness, dizziness, insomnia, euphoria, dysphoria, tremor, headache, psychosis.

Gastrointestinal:Dryness of the mouth, unpleasant taste, diarrhea, constipation, other gastrointestinal disturbances.

Allergic:Urticaria.

Endocrine:Impotence, changes in libido.

7 DRUG INTERACTIONS

7.1 Monoamine Oxidase Inhibitors

Use of Phentermine is contraindicated during or within 14 days following the administration of monoamine oxidase inhibitors because of the risk of hypertensive crisis.

7.2 Alcohol

Concomitant use of alcohol with phentermine may result in an adverse drug reaction.

7.3 Insulin and Oral Hypoglycemic Medications

Requirements may be altered [*see Warnings and Precautions (5.9)*].

7.4 Adrenergic Neuron Blocking Drugs

Phentermine may decrease the hypotensive effect of adrenergic neuron blocking drugs.

8 USE IN SPECIFIC POPULATIONS

8.1 Pregnancy

Pregnancy category X

Phentermine is contraindicated during pregnancy because weight loss offers no potential benefit to a pregnant woman and may result in fetal harm. A minimum weight gain, and no weight loss, is currently recommended for all pregnant women, including those who are already overweight or obese, due to obligatory weight gain that occurs in maternal tissues during pregnancy. Phentermine has pharmacologic activity similar to amphetamine (d- and d/l-amphetamine) [*see Clinical Pharmacology (12.1)*]. Animal reproduction studies have not been conducted with phentermine. If this drug is used during pregnancy, or if the patient becomes pregnant while taking this drug, the patient should be apprised of the potential hazard to a fetus.

8.3 Nursing Mothers

It is not known if Phentermine is excreted in human milk; however, other amphetamines

are present in human milk. Because of the potential for serious adverse reactions in nursing infants, a decision should be made whether to discontinue nursing or to discontinue the drug, taking into account the importance of the drug to the mother.

8.4 Pediatric Use

Safety and effectiveness in pediatric patients have not been established. Because pediatric obesity is a chronic condition requiring long-term treatment, the use of this product, approved for short-term therapy, is not recommended.

8.5 Geriatric Use

In general, dose selection for an elderly patient should be cautious, usually starting at the low end of the dosing range, reflecting the greater frequency of decreased hepatic, renal, or cardiac function, and of concomitant disease or other drug therapy.

This drug is known to be substantially excreted by the kidney, and the risk of toxic reactions to this drug may be greater in patients with impaired renal function. Because elderly patients are more likely to have decreased renal function, care should be taken in dose selection, and it may be useful to monitor renal function.

8.6 Renal Impairment

Based on the reported excretion of Phentermine in urine, exposure increases can be expected in patients with renal impairment [see *Clinical Pharmacology* (12.3)].

Use caution when administering phentermine hydrochloride to patients with renal impairment. In patients with severe renal impairment (eGFR 15 to 29 mL/min/1.73 m²), limit the dosage of phentermine hydrochloride to 15 mg daily [see *Dosage and Administration* (2.2)]. Phentermine hydrochloride has not been studied in patients with eGFR less than 15 mL/min/1.73 m², including end-stage renal disease requiring dialysis; avoid use in these populations.

9 DRUG ABUSE AND DEPENDENCE

9.1 Controlled Substance

Phentermine is a Schedule IV controlled substance.

9.2 Abuse

Phentermine is related chemically and pharmacologically to the amphetamines. Amphetamines and other stimulant drugs have been extensively abused and the possibility of abuse of phentermine should be kept in mind when evaluating the desirability of including a drug as part of a weight reduction program.

9.3 Dependence

Abuse of amphetamines and related drugs may be associated with intense psychological dependence and severe social dysfunction. There are reports of patients who have increased the dosage of these drugs to many times that recommended. Abrupt cessation following prolonged high dosage administration results in extreme fatigue and mental depression; changes are also noted on the sleep EEG. Manifestations of chronic

intoxication with anorectic drugs include severe dermatoses, marked insomnia, irritability, hyperactivity and personality changes. A severe manifestation of chronic intoxication is psychosis, often clinically indistinguishable from schizophrenia.

10 OVERDOSAGE

The least amount feasible should be prescribed or dispensed at one time in order to minimize the possibility of overdose.

10.1 Acute Overdosage

Manifestations of acute overdose include restlessness, tremor, hyperreflexia, rapid respiration, confusion, assaultiveness, hallucinations, and panic states. Fatigue and depression usually follow the central stimulation. Cardiovascular effects include tachycardia, arrhythmia, hypertension or hypotension, and circulatory collapse. Gastrointestinal symptoms include nausea, vomiting, diarrhea and abdominal cramps. Overdosage of pharmacologically similar compounds has resulted in fatal poisoning usually terminates in convulsions and coma.

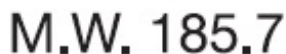
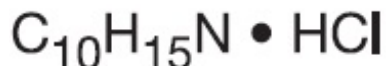
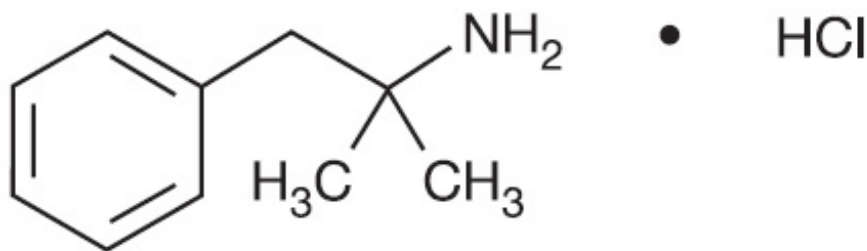
Management of acute phentermine hydrochloride intoxication is largely symptomatic and includes lavage and sedation with a barbiturate. Experience with hemodialysis or peritoneal dialysis is inadequate to permit recommendations in this regard. Acidification of the urine increases phentermine excretion. Intravenous phentolamine (Regitine[®], CIBA) has been suggested on pharmacologic grounds for possible acute, severe hypertension, if this complicates overdose.

10.2 Chronic Intoxication

Manifestations of chronic intoxication with anorectic drugs include severe dermatoses, marked insomnia, irritability, hyperactivity and personality changes. The most severe manifestation of chronic intoxications is psychosis, often clinically indistinguishable from schizophrenia. *See Drug Abuse and Dependence (9.3) .*

11 DESCRIPTION

Phentermine hydrochloride is a sympathomimetic amine anorectic. Its chemical name is α,α -dimethylphenethylamine hydrochloride. The structural formula is as follows:



Phentermine Hydrochloride is a white, odorless, hygroscopic, crystalline powder which is soluble in water and lower alcohols, slightly soluble in chloroform and insoluble in ether.

Phentermine hydrochloride is available as:

a) powder-filled capsules containing 15 mg Phentermine hydrochloride (equivalent to 12 mg Phentermine) or 30 mg Phentermine hydrochloride (equivalent to 24 mg Phentermine) and inactive ingredients: corn starch, gelatin, lactose monohydrate and magnesium stearate. In addition, the 15 mg capsules contain D&C Yellow #10, FD&C Blue #1, FD&C Red #3, FD&C Red #40, titanium dioxide and the 30 mg capsules contain D&C Yellow #10, FD&C Red #3, titanium dioxide.

b) bead-filled capsules containing 30 mg Phentermine hydrochloride (equivalent to 24 mg Phentermine) and inactive ingredients: corn starch, sucrose, hypromellose, povidone, and talc. In addition, the capsule contains FD&C blue #1/Brilliant blue FCF Aluminum Lake, D&C red #28 and gelatin.

12 CLINICAL PHARMACOLOGY

12.1 Mechanism of Action

Phentermine is a sympathomimetic amine with pharmacologic activity similar to the prototype drugs of this class used in obesity, amphetamine (d- and d,l-amphetamine). Drugs of this class used in obesity are commonly known as “anorectics” or “anorexigenics.” It has not been established that the primary action of such drugs in treating obesity is one of appetite suppression since other central nervous system actions, or metabolic effects, may also be involved.

12.2 Pharmacodynamics

Typical actions of amphetamines include central nervous system stimulation and elevation of blood pressure. Tachyphylaxis and tolerance have been demonstrated with all drugs of this class in which these phenomena have been looked for.

12.3 Pharmacokinetics

Following the administration of Phentermine, Phentermine reaches peak concentrations (C_{max}) after 3 to 4.4 hours.

Drug Interactions

In a single-dose study comparing the exposures after oral administration of a combination capsule of 15 mg Phentermine and 92 mg topiramate to the exposures after oral administration of a 15 mg Phentermine capsule or a 92 mg topiramate capsule, there is no significant topiramate exposure change in the presence of Phentermine. However in the presence of topiramate, Phentermine C_{max} and AUC increase 13% and 42%, respectively.

Specific Populations

Renal Impairment

Cumulative urinary excretion of phentermine under uncontrolled urinary pH conditions was 62% to 85%.

Systemic exposure of phentermine may increase up to 91%, 45%, and 22% in patients with severe, moderate, and mild renal impairment, respectively [*see Dosage and Administration (2.2) and Use in Specific Populations (8.6)*].

13 NONCLINICAL TOXICOLOGY

13.1 Carcinogenesis, Mutagenesis, Impairment of Fertility

Studies have not been performed with phentermine to determine the potential for carcinogenesis, mutagenesis or impairment of fertility.

14 CLINICAL STUDIES

In relatively short-term clinical trials, adult obese subjects instructed in dietary management and treated with “anorectic” drugs lost more weight on the average than those treated with placebo and diet.

The magnitude of increased weight loss of drug-treated patients over placebo-treated patients is only a fraction of a pound a week. The rate of weight loss is greatest in the first weeks of therapy for both drug and placebo subjects and tends to decrease in succeeding weeks. The possible origins of the increased weight loss due to the various drug effects are not established. The amount of weight loss associated with the use of an “anorectic” drug varies from trial to trial, and the increased weight loss appears to be related in part to variables other than the drugs prescribed, such as the physician-investigator, the population treated and the diet prescribed. Studies do not permit conclusions as to the relative importance of the drug and non-drug factors on weight loss.

The natural history of obesity is measured over several years, whereas the studies cited are restricted to a few weeks’ duration; thus, the total impact of drug-induced weight loss over that of diet alone must be considered clinically limited.

16 HOW SUPPLIED/STORAGE AND HANDLING

Phentermine Hydrochloride capsules, USP are available as follows:

Phentermine Hydrochloride capsules, USP 15 mg are supplied as gray opaque cap, rich yellow opaque body with black imprint “K 26” on both the cap and body, filled with powder.

Bottles of 100, NDC 43063-961-01

Store at 20° to 25°C (68° to 77°F) with excursions permitted between 15° to 30°C (59° to 86°F) [See USP Controlled Room Temperature].

Dispense in a tight, light resistant container as defined in the USP, with a child-resistant closure (as required). Keep out of the reach of children

17 PATIENT COUNSELING INFORMATION

Patients must be informed that Phentermine Hydrochloride is a *short-term* (a few weeks) adjunct in a regimen of weight reduction based on exercise, behavioral modification and caloric restriction in the management of exogenous obesity, and that co-administration of Phentermine with other drugs for weight loss is not recommended [*see Indications*

and Usage (1) and Warnings and Precautions (5)].

Patients must be instructed on how much Phentermine to take, and when and how to take it [*see Dosage and Administration (2)].*

Advice pregnant women and nursing mothers not to use Phentermine [*see Use in Specific Populations (8.1, 8.3)].*

Patients must be informed about the risks of use of Phentermine (including the risks discussed in Warnings and Precautions), about the symptoms of potential adverse reactions and when to contact a physician and/or take other action. The risks include, but are not limited to:

- Development of primary pulmonary hypertension [*see Warnings and Precautions (5.2)]*
- Development of serious valvular heart disease [*see Warnings and Precautions (5.3)]*
- Effects on the ability to engage in potentially hazardous tasks [*see Warnings and Precautions (5.5)]*
- The risk of an increase in blood pressure [*see Warnings and Precautions (5.8) and Adverse Reactions (6)]*
- The risk of interactions [*see Contraindications (4), Warnings and Precautions (5) and Drug Interactions (7)]*

See also, for example, *Adverse Reactions (6) and Use in Specific Populations (8) .*

The patients must also be informed about

- the potential for developing tolerance and actions if they suspect development of tolerance [*see Warnings and Precautions (5.4)]* and
- the risk of dependence and the potential consequences of abuse [*see Warnings and Precautions (5.6), Drug Abuse and Dependence (9), and Overdosage (10)].*

Tell patients to keep Phentermine in a safe place to prevent theft, accidental overdose, misuse or abuse. Selling or giving away Phentermine may harm others and is against the law.

Regitine[®] is a registered trademark of CIBA PHARMACEUTICAL PRODUCTS, INC.

Manufactured by:

KVK-TECH INC.

110 Terry Drive

Newtown, PA 18940

Item ID # 006070/04 12/2018

Manufacturer's Code: 10702

PACKAGE LABEL.PRINCIPAL DISPLAY PANEL - 15 mg Bottle Label
PHENTERMINE HYDROCHLORIDE CAPSULES, USP

CIV

15 mg

Gray/Rich Yellow

Rx Only

Each capsule contains:
Phentermine Hydrochloride, USP
15 mg (equivalent to 12 mg of
Phentermine base)

Usual Dosage: see package
outsert for complete dosage
recommendation.

Dispense in a tight, light-resistant
container as defined in the USP/
NF, with a child-resistant closure
(as required).

Store at 20° to 25°C (68° to 77°F)
with excursions permitted between
15° to 30°C (59° to 86°F) [see USP
Controlled Room Temperature].

Protect from moisture.
Keep tightly closed.

**Prescribing information
can be viewed /
printed at:**



NDC 43063-961-01
Source: 10702-026-01

**Phentermine
Hydrochloride**
15 mg
100 Capsules
Grey/Rich Yellow

Rx Only
TAMPER EVIDENT: DO NOT USE IF
SEAL IS BROKEN OR MISSING FROM BOTTLE.

**Please direct all product inquiries
to PD-Rx Pharmaceuticals, Inc.**

Marketed and Packaged By:
PD-Rx Pharmaceuticals, Inc
Oklahoma City, OK 73127
1-405-942-3040 v.8.19.1

**Keep this and all medications
out of the reach of children.**



Manufactured by:
KVK-Tech, Inc.,
Newtown, PA 18940

GTIN: 00343063961018
SNO: K24B39000001
EXP: 07/2026
LOT: K24B39



PHENTERMINE HYDROCHLORIDE

phentermine hydrochloride capsule

Product Information

Product Type	HUMAN PRESCRIPTION DRUG	Item Code (Source)	NDC:43063- 961(NDC:10702-026)
Route of Administration	ORAL	DEA Schedule	CIV

Active Ingredient/Active Moiety

Ingredient Name	Basis of Strength	Strength
PHENTERMINE HYDROCHLORIDE (UNII: 0K2I5050TV) (PHENTERMINE - UNII:C045TQL4WP)	PHENTERMINE HYDROCHLORIDE	15 mg

Inactive Ingredients

Ingredient Name	Strength
STARCH, CORN (UNII: O8232NY3SJ)	
GELATIN (UNII: 2G86QN327L)	
LACTOSE MONOHYDRATE (UNII: EWQ57Q8I5X)	
D&C YELLOW NO. 10 (UNII: 35SW5USQ3G)	
FD&C BLUE NO. 1 (UNII: H3R47K3TBD)	
FD&C RED NO. 3 (UNII: PN2ZH5LOQY)	

FD&C RED NO. 40 (UNII: WZB9127XOA)	
TITANIUM DIOXIDE (UNII: 15FIX9V2JP)	
MAGNESIUM STEARATE (UNII: 70097M6I30)	

Product Characteristics			
Color	yellow, gray	Score	no score
Shape	CAPSULE	Size	14mm
Flavor		Imprint Code	K;26
Contains			

Packaging				
#	Item Code	Package Description	Marketing Start Date	Marketing End Date
1	NDC:43063-961-01	100 in 1 BOTTLE, PLASTIC; Type 0: Not a Combination Product	04/01/2019	

Marketing Information			
Marketing Category	Application Number or Monograph Citation	Marketing Start Date	Marketing End Date
ANDA	ANDA040886	08/07/2012	

Labeler - PD-Rx Pharmaceuticals, Inc. (156893695)

Registrant - PD-Rx Pharmaceuticals, Inc. (156893695)

Establishment			
Name	Address	ID/FEI	Business Operations
PD-Rx Pharmaceuticals, Inc.		156893695	repack(43063-961)