

LOMOTIL- diphenoxylate hydrochloride and atropine sulfate tablet
Pfizer Laboratories Div Pfizer Inc

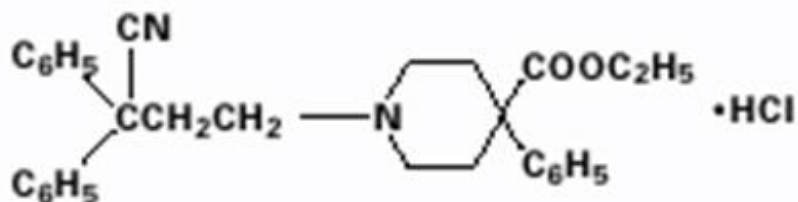
LOMOTIL (diphenoxylate hydrochloride and atropine sulfate tablets), for oral use, C-V

DESCRIPTION

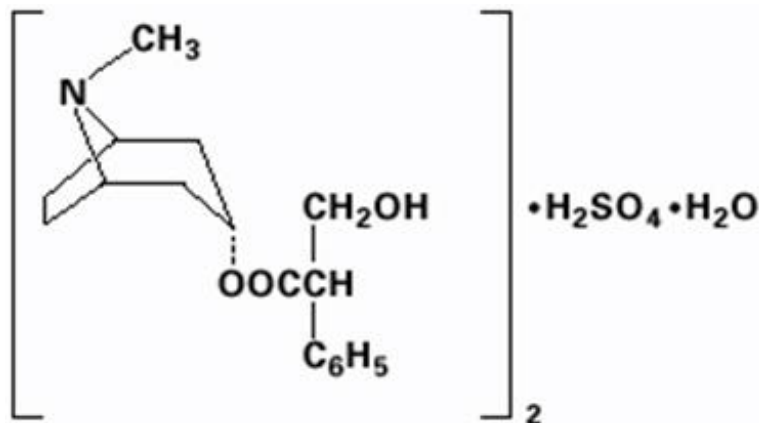
Each Lomotil tablet contains:

2.5 mg of diphenoxylate hydrochloride USP (equivalent to 2.3 mg of diphenoxylate) and 0.025 mg of atropine sulfate USP (equivalent to 0.01 mg of atropine)

Diphenoxylate hydrochloride, an antidiarrheal, is ethyl 1-(3-cyano-3,3-diphenylpropyl)-4-phenylisonipicotate monohydrochloride and has the following structural formula:



Atropine sulfate, an anticholinergic, is endo-(±)-α-(hydroxymethyl) benzeneacetic acid 8-methyl-8-azabicyclo[3.2.1] oct-3-yl ester sulfate (2:1) (salt) monohydrate and has the following structural formula:



A subtherapeutic amount of atropine sulfate is present to discourage deliberate overdose.

Inactive ingredients of Lomotil tablets include acacia, corn starch, magnesium stearate, sorbitol, sucrose, and talc.

CLINICAL PHARMACOLOGY

Diphenoxylate is rapidly and extensively metabolized in man by ester hydrolysis to diphenoxylic acid (difenoxine), which is biologically active and the major metabolite in the blood. After a 5 mg oral dose of carbon-14 labeled diphenoxylate hydrochloride in ethanolic solution was given to three healthy volunteers, an average of 14% of the drug plus its metabolites was excreted in the urine and 49% in the feces over a four-day period. Urinary excretion of the unmetabolized drug constituted less than 1% of the dose, and diphenoxylic acid plus its glucuronide conjugate constituted about 6% of the dose. In a 16-subject crossover bioavailability study, a linear relationship in the dose range of 2.5 to 10 mg was found between the dose of diphenoxylate hydrochloride (given as Lomotil liquid) and the peak plasma concentration, the area under the plasma concentration-time curve, and the amount of diphenoxylic acid excreted in the urine. In the same study the bioavailability of the tablet compared with an equal dose of the liquid was approximately 90%. The average peak plasma concentration of diphenoxylic acid following ingestion of four 2.5 mg tablets was 163 ng/ml at about 2 hours, and the elimination half-life of diphenoxylic acid was approximately 12 to 14 hours.

In dogs, diphenoxylate hydrochloride has a direct effect on circular smooth muscle of the bowel that conceivably results in segmentation and prolongation of gastrointestinal transit time. The clinical antidiarrheal action of diphenoxylate hydrochloride may thus be a consequence of enhanced segmentation that allows increased contact of the intraluminal contents with the intestinal mucosa.

INDICATIONS AND USAGE

Lomotil is indicated as adjunctive therapy in the management of diarrhea in patients 13 years of age and older.

CONTRAINDICATIONS

Lomotil is contraindicated in:

- Pediatric patients less than 6 years of age due to the risks of respiratory and central nervous system (CNS) depression (see **WARNINGS**).
- Patients with diarrhea associated with pseudomembranous enterocolitis (*Clostridium difficile*) or other enterotoxin-producing bacteria due to the risk of gastrointestinal (GI) complications, including sepsis (see **WARNINGS**).
- Patients with known hypersensitivity to diphenoxylate or atropine.
- Patients with obstructive jaundice.

WARNINGS

Respiratory and/or CNS Depression in Pediatric Patients Less Than 6 Years of Age

Cases of severe respiratory depression and coma, leading to permanent brain damage or death have been reported in patients less than 6 years of age who received Lomotil. Lomotil is contraindicated in patients less than 6 years of age due to these risks (see **CONTRAINDICATIONS**).

Anticholinergic and Opioid-Toxicities

Toxicities associated with the atropine and diphenoxylate components of Lomotil have been reported. The initial presenting symptoms may be delayed by up to 30 hours due to prolonged gastric emptying time induced by diphenoxylate hydrochloride. Clinical presentations vary in terms of which toxicity (anticholinergic vs. opioid) will present first or predominate; non-specific findings have been reported and include symptoms such as drowsiness (see **OVERDOSAGE**).

Dehydration and Electrolyte Imbalance

The use of Lomotil should be accompanied by appropriate fluid and electrolyte therapy, when indicated. If severe dehydration or electrolyte imbalance is present, Lomotil should be withheld until appropriate corrective therapy has been initiated. Drug-induced inhibition of peristalsis may result in fluid retention in the intestine, which may further aggravate dehydration and electrolyte imbalance.

Gastrointestinal Complications in Patients with Infectious Diarrhea

Lomotil is contraindicated in patients with diarrhea associated with organisms that penetrate the GI mucosa (toxigenic *E. coli*, *Salmonella*, *Shigella*), and pseudomembranous enterocolitis (*Clostridium difficile*) associated with broad-spectrum antibiotics (see **CONTRAINDICATIONS**). Antiperistaltic agents, including Lomotil, slow gastrointestinal motility and may enhance bacterial overgrowth and the release of bacterial exotoxins. Lomotil has been reported to result in serious GI complications in patients with infectious diarrhea, including sepsis, prolonged and/or worsened diarrhea. Prolonged fever and the delay in the resolution of stool pathogens were reported in study of Shigellosis in adults who used Lomotil vs. placebo.

Toxic Megacolon in Patients with Acute Ulcerative Colitis

In some patients with acute ulcerative colitis, agents that inhibit intestinal motility or prolong intestinal transit time have been reported to induce toxic megacolon. Consequently, patients with acute ulcerative colitis should be carefully observed and Lomotil therapy should be discontinued promptly if abdominal distention occurs or if other untoward symptoms develop.

Interaction with Meperidine Hydrochloride

Since the chemical structure of diphenoxylate hydrochloride is similar to that of meperidine hydrochloride, the concurrent use of Lomotil with monoamine oxidase (MAO) inhibitors may, in theory, precipitate hypertensive crisis.

Hepatorenal Disease

Lomotil should be used with extreme caution in patients with advanced hepatorenal disease and in all patients with abnormal liver function since hepatic coma may be precipitated.

Interaction with CNS Depressants

Diphenoxylate hydrochloride may potentiate the action of other drugs that cause dizziness or drowsiness, including barbiturates, benzodiazepines and other

sedatives/hypnotics, anxiolytics, and tranquilizers, muscle relaxants, general anesthetics, antipsychotics, other opioids, and alcohol. Therefore, the patient should be closely observed when any of these are used concomitantly.

PRECAUTIONS

Atropinism

Since a subtherapeutic dose of atropine has been added to Lomotil, consideration should be given to the development of adverse reactions associated with atropine (see **WARNINGS**). Lomotil has caused atropinism (hyperthermia, tachycardia, urinary retention, flushing, dryness of the skin and mucous membranes) particularly in pediatric patients with Down's syndrome. Lomotil is not indicated for use in pediatric patients (see **CONTRAINDICATIONS** and **WARNINGS**). Monitor patients for signs of atropinism.

Information for patients:

Advise patients:

- Accidental ingestion of Lomotil in children, especially in those less than 6 years of age, may result in severe respiratory depression or coma. Instruct patients to take steps to store Lomotil securely and out of reach of children, and to dispose of unused Lomotil (see **WARNINGS**).
- To take Lomotil at the prescribed dosage. Use of a higher than prescribed dosage may include opioid and/or anticholinergic effects (see **OVERDOSAGE**). Report to a healthcare facility if they develop anticholinergic symptoms such as hyperthermia, flushing, tachycardia, tachypnea, hypotonia, lethargy, hallucinations, febrile convulsion, dry mouth, mydriasis or opioid symptoms such as progressive CNS and respiratory depression, miosis, seizures, or paralytic ileus.
- Lomotil may produce drowsiness or dizziness. Concomitant use of alcohol or other drugs that also cause CNS depression (e.g., barbiturates, benzodiazepines, opioids, buspirone, antihistamines, and muscle relaxants) may increase this effect. Inform patients not to operate motor vehicles or other dangerous machinery until they are reasonably certain that Lomotil does not affect them adversely.
- To use fluid and electrolyte therapy, if prescribed along with Lomotil, as instructed by their healthcare provider.
- Clinical improvement of diarrhea is usually observed within 48 hours. If clinical improvement is not seen within 10 days, discontinue Lomotil and contact their healthcare provider.

Drug interactions:

Alcohol

Alcohol may increase the CNS depressant effects of Lomotil and may cause drowsiness (see **WARNINGS**). Avoid concomitant use of Lomotil with alcohol.

Other Drugs that Cause CNS Depression

The concurrent use of Lomotil with other drugs that cause CNS depression (e.g., barbiturates, benzodiazepines, opioids, buspirone, antihistamines, muscle relaxants),

may potentiate the effects of Lomotil (see **WARNINGS**). Either Lomotil or the other interacting drug should be chosen, depending on the importance of the drug to the patient. If CNS-acting drugs cannot be avoided, monitor patients for CNS adverse reactions.

MAO Inhibitors

Diphenoxylate may interact with monoamine oxidase inhibitors (MAOIs) and precipitate a hypertensive crisis. Avoid use of Lomotil in patients who take MAOIs and monitor for signs and symptoms of hypertensive crisis (headache, hyperthermia, hypertension).

Carcinogenesis, mutagenesis, impairment of fertility

No long-term study in animals has been performed to evaluate carcinogenic potential. Diphenoxylate hydrochloride was administered to male and female rats in their diets to provide dose levels of 4 and 20 mg/kg/day throughout a three-litter reproduction study. At 50 times the human dose (20 mg/kg/day), female weight gain was reduced and there was a marked effect on fertility as only 4 of 27 females became pregnant in three test breedings. The relevance of this finding to usage of Lomotil in humans is unknown.

Pregnancy

Diphenoxylate hydrochloride has been shown to have an effect on fertility in rats when given in doses 50 times the human dose (see above discussion). Other findings in this study include a decrease in maternal weight gain of 30% at 20 mg/kg/day and of 10% at 4 mg/kg/day. At 10 times the human dose (4 mg/kg/day), average litter size was slightly reduced.

Teratology studies were conducted in rats, rabbits, and mice with diphenoxylate hydrochloride at oral doses of 0.4 to 20 mg/kg/day. Due to experimental design and small numbers of litters, embryotoxic, fetotoxic, or teratogenic effects cannot be adequately assessed. However, examination of the available fetuses did not reveal any indication of teratogenicity.

There are no adequate and well-controlled studies in pregnant women. Lomotil should be used during pregnancy only if the anticipated benefit justifies the potential risk to the fetus.

Nursing mothers

Caution should be exercised when Lomotil is administered to a nursing woman, since the physicochemical characteristics of the major metabolite, diphenoxylic acid, are such that it may be excreted in breast milk and since it is known that atropine is excreted in breast milk.

Pediatric use

The safety and effectiveness of Lomotil have been established in pediatric patients 13 years of age and older as adjunctive therapy in the management of diarrhea. The safety and effectiveness of Lomotil have not been established in pediatric patients less than 13 years of age.

Lomotil is contraindicated in pediatric patients less than 6 years of age due to the risks of severe respiratory depression and coma, possibly resulting in permanent brain

damage or death (see **CONTRAINDICATIONS**).

Lomotil has caused atropinism, particularly in pediatric patients with Down's syndrome (see **PRECAUTIONS**).

In case of accidental ingestion of Lomotil by pediatric patients, see **OVERDOSAGE** for recommended treatment.

ADVERSE REACTIONS

The following serious adverse reactions are described elsewhere in labeling:

- Respiratory and/or CNS depression (see **WARNINGS**)
- Anticholinergic and opioid-toxicities, including atropinism (see **WARNINGS** and **PRECAUTIONS**)
- Dehydration and electrolyte imbalance (see **WARNINGS**)
- GI Complications in patients with infectious diarrhea (see **WARNINGS**)
- Toxic megacolon in patients with acute ulcerative colitis (see **WARNINGS**)

At *therapeutic* doses of Lomotil, the following other adverse reactions have been reported; they are listed in decreasing order of severity, but not of frequency:

Nervous system: numbness of extremities, euphoria, depression, malaise/lethargy, confusion, sedation/drowsiness, dizziness, restlessness, headache, hallucination

Allergic: anaphylaxis, angioneurotic edema, urticaria, swelling of the gums, pruritus

Gastrointestinal system: megacolon, paralytic ileus, pancreatitis, vomiting, nausea, anorexia, abdominal discomfort

The following adverse reactions related to atropine sulfate are listed in decreasing order of severity, but not of frequency: hyperthermia, tachycardia, urinary retention, flushing, dryness of the skin and mucous membranes.

DRUG ABUSE AND DEPENDENCE

Controlled substance

Lomotil is classified as a Schedule V controlled substance by federal regulation. Diphenoxylate hydrochloride is chemically related to the narcotic analgesic meperidine.

Drug abuse and dependence

In doses used for the treatment of diarrhea, whether acute or chronic, diphenoxylate has not produced addiction.

Diphenoxylate hydrochloride is devoid of morphine-like subjective effects at therapeutic doses. At high doses it exhibits codeine-like subjective effects. The dose which produces antidiarrheal action is widely separated from the dose which causes central nervous system effects. The insolubility of diphenoxylate hydrochloride in commonly available aqueous media precludes intravenous self-administration. A dose of 100 to 300 mg/day, which is equivalent to 40 to 120 tablets, administered to humans for 40 to 70 days, produced opiate withdrawal symptoms. Since addiction to diphenoxylate hydrochloride

is possible at high doses, the recommended dosage should not be exceeded.

OVERDOSAGE

Diagnosis

Overdosage can be life-threatening. Symptoms of overdosage may include opioid and/or anticholinergic effects including respiratory depression, coma, delirium, lethargy, dryness of the skin and mucous membranes, mydriasis or miosis, flushing, hyperthermia, tachycardia, hypotonia, tachypnea, toxic encephalopathy, seizures and incoherent speech.

Respiratory depression has been reported up to 30 hours after ingestion and may recur despite an initial response to narcotic antagonists.

Treat all possible Lomotil overdoses as serious and maintain medical observation/hospitalization until patients become asymptomatic without naloxone use.

Treatment

A pure narcotic antagonist (e.g., naloxone) should be used in the treatment of respiratory depression caused by Lomotil. Refer to the prescribing information for naloxone. Consider Lomotil toxicity even in settings of negative toxicology tests.

Following initial improvement of respiratory function, repeated doses of naloxone hydrochloride may be required to counteract recurrent respiratory depression.

If over-exposure occurs, call your Poison Control Center at 1-800-222-1222 for current information on the management of poisoning or overdosage.

DOSAGE AND ADMINISTRATION

Management of Diarrhea in Patients 13 Years of Age and Older

Lomotil is recommended as adjunctive therapy for the management of diarrhea in patients 13 years of age and older. Consider the nutritional status and degree of dehydration in patients prior to initiating therapy with Lomotil. The use of Lomotil should be accompanied by appropriate fluid and electrolyte therapy, when indicated. If severe dehydration or electrolyte imbalance is present, do not administer Lomotil until appropriate corrective therapy has been indicated (see **WARNINGS**).

Initial and Maximum Recommended Dosage in Patients 13 Years of Age and Older

The initial adult dosage is 2 Lomotil tablets four times daily (maximum total daily dose of 20 mg per day of diphenoxylate hydrochloride). Most patients will require this dosage until initial control of diarrhea has been achieved. Clinical improvement of acute diarrhea is usually observed within 48 hours.

Dosage after Initial Control of Diarrhea

After initial control has been achieved, the Lomotil dosage may be reduced to meet individual requirements. Control may often be maintained with as little as two Lomotil

tablets daily.

Duration of Treatment

If clinical improvement of chronic diarrhea after treatment with the maximum recommended daily dosage is not observed within 10 days, discontinue Lomotil as symptoms are unlikely to be controlled by further administration.

HOW SUPPLIED

Tablets — round, white, with SEARLE debossed on one side and 61 on the other side and containing 2.5 mg of diphenoxylate hydrochloride and 0.025 mg of atropine sulfate, supplied as:

NDC Number	Size
0025-0061-31	bottle of 100

Store below 25°C (77°F).

This product's labeling may have been updated. For the most recent prescribing information, please visit www.pfizer.com.



Distributed by
Pfizer Labs
Division of Pfizer Inc.
New York, NY 10001

LAB-0065-7.0
Revised March 2025

PRINCIPAL DISPLAY PANEL - 2.5 mg/0.025 mg Tablet Bottle Label

Pfizer

NDC 0025-0061-31


Lomotil®
CV

(diphenoxylate
hydrochloride and
atropine sulfate) tablets, USP


2.5 mg/0.025 mg*

100 Tablets
Rx only

Store below 25°C (77°F).
Pharmacist: Caution patient not to exceed recommended dose and to keep out of reach of children. Dispense only in a well-closed, light-resistant, child-resistant container.
DOSAGE AND USE: See accompanying prescribing information.
*Each tablet contains: diphenoxylate hydrochloride USP...2.5 mg (equivalent to 2.3 mg of diphenoxylate); atropine sulfate USP...0.025 mg (equivalent to 0.01 mg of atropine).
Warning-May be habit forming
Special Note:
Lomotil is not recommended for children under 6 years of age.



NDC 0025-0061-31

Lomotil® 

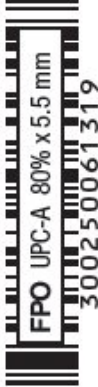
(diphenoxylate hydrochloride and atropine sulfate) tablets, USP

2.5 mg/0.025 mg*

PAA190542

Distributed by:
Pfizer Labs
Division of Pfizer Inc.
NY, NY 10017

GTIN:
00300250061319
LOT: / EXP:



FPO UPC-A 80% x 5.5 mm
300250061319

100 Tablets

Rx only

LOMOTIL

diphenoxylate hydrochloride and atropine sulfate tablet

Product Information

Product Type	HUMAN PRESCRIPTION DRUG	Item Code (Source)	NDC:0025-0061
Route of Administration	ORAL	DEA Schedule	CV

Active Ingredient/Active Moiety

Ingredient Name	Basis of Strength	Strength
DIPHENOXYLATE HYDROCHLORIDE (UNII: W24OD7YW48) (DIPHENOXYLATE - UNII: 73312P173G)	DIPHENOXYLATE HYDROCHLORIDE	2.5 mg
ATROPINE SULFATE (UNII: 03J5ZE7KA5) (ATROPINE - UNII: 7C0697DR9I)	ATROPINE SULFATE	0.025 mg

Inactive Ingredients

Ingredient Name	Strength
ACACIA (UNII: 5C5403N26O)	

STARCH, CORN (UNII: O8232NY3SJ)	
MAGNESIUM STEARATE (UNII: 70097M6I30)	
SORBITOL (UNII: 506T60A25R)	
SUCROSE (UNII: C151H8M554)	
TALC (UNII: 7SEV7J4R1U)	

Product Characteristics

Color	WHITE	Score	no score
Shape	ROUND	Size	6mm
Flavor		Imprint Code	SEARLE;61
Contains			

Packaging

#	Item Code	Package Description	Marketing Start Date	Marketing End Date
1	NDC:0025-0061-31	100 in 1 BOTTLE; Type 0: Not a Combination Product	09/15/1960	

Marketing Information

Marketing Category	Application Number or Monograph Citation	Marketing Start Date	Marketing End Date
NDA	NDA012462	09/15/1960	

Labeler - Pfizer Laboratories Div Pfizer Inc (134489525)

Establishment

Name	Address	ID/FEI	Business Operations
Pfizer Inc		943955690	ANALYSIS(0025-0061)

Revised: 4/2025

Pfizer Laboratories Div Pfizer Inc