

# MESALAMINE- mesalamine capsule, extended release AvPAK

## HIGHLIGHTS OF PRESCRIBING INFORMATION

### Mesalamine Extended Release Rx Only

These highlights do not include all the information needed to use MESALAMINE EXTENDED-RELEASE CAPSULES safely and effectively. See full prescribing information for MESALAMINE EXTENDED-RELEASE CAPSULES.

Initial U.S. Approval: 1987

## RECENT MAJOR CHANGES

- Warnings and Precautions  
Severe Cutaneous Adverse Reactions ( 5.5) 11/2021

## INDICATIONS AND USAGE

Mesalamine extended-release capsule is an aminosalicylate indicated for the maintenance of remission of ulcerative colitis in adults. ( 1)

## DOSAGE AND ADMINISTRATION

### Dosage

The recommended dosage is 1.5 g (four 0.375 g capsules) once daily in the morning. ( 2)

### Administration Instructions

- Evaluate renal function before initiating therapy with mesalamine extended-release capsules. ( 2)
- Swallow the capsules whole. Do not cut, break, crush or chew the capsules. ( 2)
- Avoid co-administration with antacids. ( 2, 7.1)
- Drink an adequate amount of fluids. ( 2, 5.6)
- Take mesalamine extended-release capsules without regard to meals. ( 2)

## DOSAGE FORMS AND STRENGTHS

Extended-release capsules: 0.375 g ( 3)

## CONTRAINDICATIONS

Known or suspected hypersensitivity to salicylates, aminosalicylates, or any component of mesalamine extended-release capsules. ( 4, 5.3)

## WARNINGS AND PRECAUTIONS

- Renal Impairment: Assess renal function at the beginning of treatment and periodically during treatment. Evaluate the risks and benefits in patients with known renal impairment or taking nephrotoxic drugs; monitor renal function. ( 5.1, 7.2, 8.6)
- Mesalamine- Induced Acute Intolerance Syndrome: Symptoms may be difficult to distinguish from an exacerbation of ulcerative colitis; monitor for worsening symptoms; discontinue treatment if acute intolerance syndrome is suspected. ( 5.2)
- Hypersensitivity Reactions, including Myocarditis and Pericarditis: Evaluate patients immediately and discontinue if a hypersensitivity reaction is suspected. ( 5.3)
- Hepatic Failure: Evaluate the risks and benefits in patients with known liver impairment. ( 5.4)
- Severe Cutaneous Adverse Reactions: Discontinue at the first signs or symptoms of severe cutaneous adverse reactions or other signs of hypersensitivity and consider further evaluation. ( 5.5)
- Photosensitivity: Advise patients with pre-existing skin conditions to avoid sun exposure, wear protective clothing, and use a broad-spectrum sunscreen when outdoors. ( 5.6)
- Nephrolithiasis: Mesalamine-containing stones are undetectable by standard radiography or computed tomography (CT). Ensure adequate fluid intake during treatment. ( 5.7)
- Interference with Laboratory Tests: Use of mesalamine may lead to spuriously elevated test results when measuring urinary normetanephrine by liquid chromatography with electrochemical detection. ( 5.9)

## ADVERSE REACTIONS

Most common adverse reactions ( $\geq 3\%$ ) are: headache, diarrhea, upper abdominal pain, nausea, and nasopharyngitis. ( 6.1)

To report **SUSPECTED ADVERSE REACTIONS**, contact AvKARE at 1-855-361-3993 or email [drugsafety@gmail.com](mailto:drugsafety@gmail.com) or FDA at 1-800-FDA-1088 or [www.fda.gov/medwatch](http://www.fda.gov/medwatch).

-----**DRUG INTERACTIONS**-----

- Nephrotoxic Agents including NSAIDs: Increased risk of nephrotoxicity; monitor for changes in renal function and mesalamine related adverse reactions. ( 7.2)
- Azathioprine or 6-Mercaptopurine: Increased risk of blood disorders; monitor complete blood cell counts and platelet counts. ( 7.3)

-----**USE IN SPECIFIC POPULATIONS**-----

Geriatric Patients: Increased risk of blood dyscrasias; monitor blood cell counts and platelet counts. ( 8.5)

**See 17 for PATIENT COUNSELING INFORMATION.**

**Revised: 1/2023**

---

**FULL PRESCRIBING INFORMATION: CONTENTS\***

**1 INDICATIONS AND USAGE**

**2 DOSAGE AND ADMINISTRATION**

**3 DOSAGE FORMS AND STRENGTHS**

**4 CONTRAINDICATIONS**

**5 WARNINGS AND PRECAUTIONS**

- 5.1 Renal Impairment
- 5.2 Mesalamine-Induced Acute Intolerance Syndrome
- 5.3 Hypersensitivity Reactions
- 5.4 Hepatic Failure
- 5.5 Severe Cutaneous Adverse Reactions
- 5.6 Photosensitivity
- 5.7 Nephrolithiasis
- 5.9 Interference with Laboratory Tests

**6 ADVERSE REACTIONS**

- 6.1 Clinical Trials Experience
- 6.2 Postmarketing Experience

**7 DRUG INTERACTIONS**

- 7.1 Antacids
- 7.2 Nephrotoxic Agents, Including Non-Steroidal Anti-Inflammatory Drugs
- 7.3 Azathioprine or 6-Mercaptopurine
- 7.4 Interference with Urinary Normetanephrine Measurements

**8 USE IN SPECIFIC POPULATIONS**

- 8.1 Pregnancy
- 8.2 Lactation
- 8.4 Pediatric Use
- 8.5 Geriatric Use
- 8.6 Renal Impairment

**10 OVERDOSAGE**

**11 DESCRIPTION**

**12 CLINICAL PHARMACOLOGY**

- 12.1 Mechanism of Action
- 12.3 Pharmacokinetics

**13 NONCLINICAL TOXICOLOGY**

13.1 Carcinogenesis, Mutagenesis, Impairment of Fertility

13.2 Animal Toxicology and/or Pharmacology

## **14 CLINICAL STUDIES**

## **16 HOW SUPPLIED/STORAGE AND HANDLING**

## **17 PATIENT COUNSELING INFORMATION**

\* Sections or subsections omitted from the full prescribing information are not listed.

---

## **FULL PRESCRIBING INFORMATION**

### **1 INDICATIONS AND USAGE**

Mesalamine extended-release capsules are indicated for the maintenance of remission of ulcerative colitis in adults.

### **2 DOSAGE AND ADMINISTRATION**

#### Dosage

The recommended dosage in adults is 1.5 g (four 0.375 g capsules) orally once daily in the morning.

#### Administration Instructions

- Evaluate renal function before initiating therapy with mesalamine extended-release capsules [ *see Warnings and Precautions ( 5.1)*].
- Swallow mesalamine extended-release capsules whole. Do not cut, break, crush or chew the capsules.
- Avoid co-administration of mesalamine extended-release capsules with antacids [ *see Drug Interactions ( 7.1)*].
- Drink an adequate amount of fluids [ *see Warnings and Precautions ( 5.6)*].
- Take mesalamine extended-release capsules without regard to meals [ *see Clinical Pharmacology ( 12.3)*].

### **3 DOSAGE FORMS AND STRENGTHS**

Extended-release capsules: 0.375 g mesalamine in a light blue opaque, size “00” hard gelatin capsules filled with off- white to tan colored pellets. The capsules are imprinted with “MES” on cap and “375” on body in black ink.

### **4 CONTRAINDICATIONS**

Mesalamine extended-release capsules are contraindicated in patients with hypersensitivity to salicylates or aminosaliculates or to any of the components of mesalamine extended-release capsules [ *see Warnings and Precautions ( 5.3), Adverse Reactions ( 6.2), Description ( 11)* ] .

## **5 WARNINGS AND PRECAUTIONS**

### **5.1 Renal Impairment**

Renal impairment, including minimal change disease, acute and chronic interstitial nephritis, and renal failure, has been reported in patients given products such as mesalamine extended-release capsules that contain mesalamine or are converted to mesalamine. In animal studies, the kidney was the principal organ of mesalamine toxicity [see *Adverse Reactions* ( 6.2), *Nonclinical Toxicology* ( 13.2)].

Evaluate renal function prior to initiation of mesalamine extended-release capsules therapy and periodically while on therapy. Evaluate the risks and benefits of using mesalamine extended-release capsules in patients with known renal impairment or a history of renal disease or taking concomitant nephrotoxic drugs [see *Drug Interactions* ( 7.2), *Use in Specific Populations* ( 8.6)].

### **5.2 Mesalamine-Induced Acute Intolerance Syndrome**

Mesalamine has been associated with an acute intolerance syndrome that may be difficult to distinguish from an exacerbation of ulcerative colitis. Although the exact frequency of occurrence has not been determined, it has occurred in 3% of patients in controlled clinical trials of mesalamine or sulfasalazine. Symptoms include cramping, acute abdominal pain and bloody diarrhea, sometimes fever, headache, and rash. Monitor patients for worsening of these symptoms while on treatment. If acute intolerance syndrome is suspected, promptly discontinue treatment with mesalamine extended-release capsules.

### **5.3 Hypersensitivity Reactions**

Some patients have experienced a hypersensitivity reaction to sulfasalazine. Some patients may have a similar reaction to mesalamine extended-release capsules or to other compounds that contain or are converted to mesalamine.

As with sulfasalazine, mesalamine-induced hypersensitivity reactions may present as internal organ involvement, including myocarditis, pericarditis, nephritis, hepatitis, pneumonitis and hematologic abnormalities. Evaluate patients immediately if signs or symptoms of a hypersensitivity reaction are present. Discontinue mesalamine extended-release capsules if an alternative etiology for the signs and symptoms cannot be established.

### **5.4 Hepatic Failure**

There have been reports of hepatic failure in patients with pre-existing liver disease who have been administered mesalamine. Evaluate the risks and benefits of using mesalamine extended-release capsules in patients with known liver impairment.

### **5.5 Severe Cutaneous Adverse Reactions**

Severe cutaneous adverse reactions, including Stevens- Johnson syndrome (SJS) and toxic epidermal necrolysis (TEN), drug reaction with eosinophilia and systemic symptoms

(DRESS), and acute generalized exanthematous pustulosis (AGEP) have been reported with the use of mesalamine [see *Adverse Reactions* ( 6.2)]. Discontinue mesalamine extended-release capsules at the first signs or symptoms of severe cutaneous adverse reactions or other signs of hypersensitivity and consider further evaluation.

## 5.6 Photosensitivity

Patients with pre-existing skin conditions such as atopic dermatitis and atopic eczema have reported more severe photosensitivity reactions. Advise patients to avoid sun exposure, wear protective clothing, and use a broad-spectrum sunscreen when outdoors.

## 5.7 Nephrolithiasis

Cases of nephrolithiasis have been reported with the use of mesalamine, including stones with 100% mesalamine content. Mesalamine-containing stones are radiotransparent and undetectable by standard radiography or computed tomography (CT). Ensure adequate fluid intake during treatment with mesalamine extended-release capsules.

## 5.9 Interference with Laboratory Tests

Use of mesalamine extended-release capsules may lead to spuriously elevated test results when measuring urinary normetanephrine by liquid chromatography with electrochemical detection because of the similarity in the chromatograms of normetanephrine and the main metabolite of mesalamine, N-acetyl-5-aminosalicylic acid (N-Ac-5-ASA). Consider an alternative, selective assay for normetanephrine.

## 6 ADVERSE REACTIONS

The following clinically significant adverse reactions are described elsewhere in labeling:

- Renal Impairment [see *Warnings and Precautions* ( 5.1)]
- Mesalamine-Induced Acute Intolerance Syndrome [see *Warnings and Precautions* ( 5.2)]
- Hypersensitivity Reactions [see *Warnings and Precautions* ( 5.3)]
- Hepatic Failure [see *Warnings and Precautions* ( 5.4)]
- Severe Cutaneous Adverse Reactions [see *Warnings and Precautions* ( 5.5)]
- Photosensitivity [see *Warnings and Precautions* ( 5.6)]
- Nephrolithiasis [see *Warnings and Precautions* ( 5.7)]

### 6.1 Clinical Trials Experience

Because clinical studies are conducted under widely varying conditions, adverse reaction rates observed in the clinical trials of a drug cannot be directly compared to rates in the clinical trials of another drug and may not reflect the rates observed in practice.

The data described below reflect exposure to mesalamine extended-release capsules in 557 patients, including 354 exposed for at least 6 months and 250 exposed for greater than one year. Mesalamine extended-release capsules was studied in two placebo-controlled trials (n=367 treated with mesalamine extended-release capsules) and in one open-label, long-term study (n=190 additional patients). The population consisted of patients with ulcerative colitis; the mean age was 47 years, 54% were female, and 93%

were white. Patients received doses of mesalamine extended-release capsules 1.5 g administered orally once per day for six months in the placebo-controlled trials and for up to 24 months in the open-label study.

In the two placebo-controlled trials, the most common reactions reported in at least 3% of mesalamine extended-release capsules -treated patients and at a greater rate than placebo are shown in Table 1 below.

**Table 1: Common Adverse Reactions\* in Clinical Trials of Adults with Ulcerative Colitis**

	<b>Mesalamine Extended-Release Capsules 1.5 g once daily N=367</b>	<b>Placebo N=185</b>
Headache	11%	8%
Diarrhea	8%	7%
Upper Abdominal Pain	5%	3%
Nausea	4%	3%
Nasopharyngitis	4%	3%

\*Reported in at least 3% of mesalamine extended-release capsules treated patients and at a greater rate than with placebo

The following adverse reactions, presented by body system, were reported at a frequency less than 3% in patients treated with mesalamine extended release capsules for up to 24 months in controlled and open-label trials.

Ear and Labyrinth Disorders: tinnitus, vertigo

Dermatological Disorder: alopecia

Gastrointestinal: lower abdominal pain, rectal hemorrhage

Laboratory Abnormalities: increased triglycerides, decreased hematocrit and hemoglobin

-

General Disorders and Administration Site Disorders: fatigue

Hepatic: hepatitis cholestatic, transaminases increased Renal Disorders: creatinine clearance decreased, hematuria Musculoskeletal: pain, arthralgia

Respiratory: dyspnea

## 6.2 Postmarketing Experience

The following adverse reactions have been identified during post approval use of mesalamine extended- release capsule or other mesalamine containing products. Because many of these reactions are reported voluntarily from a population of unknown size, it is not always possible to reliably estimate their frequency or establish a causal relationship to drug exposure.

Body as a Whole: lupus-like syndrome, drug fever

Cardiovascular: pericarditis, pericardial effusion, myocarditis [see *Warnings and Precautions ( 5.3)*]

Gastrointestinal: pancreatitis, cholecystitis, gastritis, gastroenteritis, gastrointestinal bleeding, perforated peptic ulcer

Hepatic: jaundice, cholestatic jaundice, hepatitis, liver necrosis, liver failure, Kawasaki-like syndrome including changes in liver enzymes

Hematologic: agranulocytosis, aplastic anemia

Nervous System: intracranial hypertension

Neurological/Psychiatric: peripheral neuropathy, Guillain-Barré syndrome, transverse myelitis

Renal and Urinary: nephrogenic diabetes insipidus, interstitial nephritis, renal failure, minimal change disease, nephrolithiasis [see *Warnings and Precautions ( 5.1, 5.7)*]

Respiratory/Pulmonary: eosinophilic pneumonia, interstitial pneumonitis, pleurisy/pleuritis

Skin: psoriasis, pyoderma gangrenosum, erythema nodosum, SJS/TEN, DRESS, and AGEP [see *Warnings and Precautions ( 5.5)*]

Renal/Urogenital: reversible oligospermia

To report SUSPECTED ADVERSE REACTIONS contact AvKARE at 1-855-361-3993; email [drugsafety@avkare.com](mailto:drugsafety@avkare.com); or FDA at 1-800-FDA-1088 or [www.fda.gov/medwatch](http://www.fda.gov/medwatch).

## 7 DRUG INTERACTIONS

### 7.1 Antacids

Because the dissolution of the coating of the granules in mesalamine extended-release capsules depends on pH, avoid co-administration of mesalamine extended-release capsules with antacids [see *Dosage and Administration ( 2)*].

### 7.2 Nephrotoxic Agents, Including Non-Steroidal Anti-Inflammatory Drugs

The concurrent use of mesalamine with known nephrotoxic agents, including non-steroidal anti-inflammatory drugs (NSAIDs) may increase the risk of nephrotoxicity. Monitor patients taking nephrotoxic drugs for changes in renal function and mesalamine-related adverse reactions [see *Warnings and Precautions ( 5.1)*].

### 7.3 Azathioprine or 6-Mercaptopurine

The concurrent use of mesalamine with azathioprine or 6-mercaptopurine and/or other

drugs known to cause myelotoxicity may increase the risk for blood disorders, bone marrow failure, and associated complications. If concomitant use of mesalamine extended-release capsules and azathioprine or 6-mercaptopurine cannot be avoided, monitor blood tests, including complete blood cell counts and platelet counts.

#### **7.4 Interference with Urinary Normetanephrine Measurements**

Use of mesalamine extended-release capsules may lead to spuriously elevated test results when measuring urinary normetanephrine by liquid chromatography with electrochemical detection [*see Warnings and Precautions ( 5.9)*]. Consider an alternative, selective assay for normetanephrine.

### **8 USE IN SPECIFIC POPULATIONS**

#### **8.1 Pregnancy**

##### Risk Summary

Published data from meta-analyses, cohort studies and case series on the use of mesalamine during pregnancy have not reliably informed an association with mesalamine and major birth defects, miscarriage, or adverse maternal or fetal outcomes (*see Data*).

In animal reproduction studies, there were no adverse developmental outcomes with administration of oral mesalamine during organogenesis to pregnant rats and rabbits at doses 1.7 and 5.4 times, respectively, the maximum recommended human dose (*see Data*).

The estimated background risk of major birth defects and miscarriage for the indicated populations is unknown. Adverse outcomes in pregnancy occur regardless of the health of the mother or the use of medications. In the U.S. general population, the estimated background risk of major birth defects and miscarriage in clinically recognized pregnancies is 2 to 4% and 15 to 20%, respectively.

##### Clinical Considerations

###### *Disease-associated maternal and embryo/fetal risk*

Published data suggest that increased disease activity is associated with the risk of developing adverse pregnancy outcomes in women with ulcerative colitis. Adverse pregnancy outcomes include preterm delivery (before 37 weeks of gestation), low birth weight (less than 2500 g) infants, and small for gestational age at birth.

##### Data

###### *Human Data*

Published data from meta-analyses, cohort studies and case series on the use of mesalamine during early pregnancy (first trimester) and throughout pregnancy have not reliably informed an association of mesalamine and major birth defects, miscarriage, or adverse maternal or fetal outcomes. There is no clear evidence that mesalamine exposure in early pregnancy is associated with an increased risk in major congenital malformations, including cardiac malformations.

Published epidemiologic studies have important methodological limitations which hinder interpretation of the data, including inability to control for confounders, such as



underlying maternal disease, and maternal use of concomitant medications, and missing information on the dose and duration of use for mesalamine products.

### *Animal Data*

Reproduction studies with mesalamine during organogenesis have been performed in rats at oral doses up to 320 mg/kg/day (about 1.7 times the recommended human dose based on a body surface area comparison) and rabbits at doses up to 495 mg/kg/day (about 5.4 times the recommended human dose based on a body surface area comparison) and have revealed no evidence of harm to the fetus due to mesalamine.

## **8.2 Lactation**

### Risk Summary

Data from published literature report the presence of mesalamine and its metabolite, N-acetyl 5-aminosalicylic acid in human milk in small amounts with relative infant doses (RID) of 2% or less (*see Data*). There are case reports of diarrhea in breastfed infants exposed to mesalamine (*see Clinical Considerations*). There is no information on the effects of the drug on milk production. The lack of clinical data during lactation precludes a clear determination of the risk of mesalamine to an infant during lactation; therefore, the developmental and health benefits of breastfeeding should be considered along with the mother's clinical need for mesalamine extended-release capsules and any potential adverse effects on the breastfed child from mesalamine or from the underlying maternal condition.

### Clinical Considerations

Advise the caregiver to monitor the breastfed infant for diarrhea.

### Data

In published lactation studies, maternal mesalamine doses from various oral and rectal formulations and products ranged from 500 mg to 4.8 g daily. The average concentration of mesalamine in milk ranged from non-detectable to 0.5 mg/L. The average concentration of the N-acetyl-5-aminosalicylic acid in milk ranged from 0.2 to 9.3 mg/L. Based on these concentrations, estimated infant daily dosages for an exclusively breastfed infant are 0 to 0.075 mg/kg/day (RID 0 to 0.1%) of mesalamine and 0.03 to 1.4 mg/kg/day of N-acetyl-5-aminosalicylic acid.

## **8.4 Pediatric Use**

Safety and effectiveness of mesalamine extended-release capsule in pediatric patients have not been established.

## **8.5 Geriatric Use**

Clinical studies of mesalamine extended-release capsules did not include sufficient numbers of subjects aged 65 years and over to determine whether they respond differently than younger subjects. Reports from uncontrolled clinical studies and postmarketing reporting systems suggested a higher incidence of blood dyscrasias (i.e., agranulocytosis, neutropenia and pancytopenia) in patients who were 65 years or older compared to younger patients taking mesalamine-containing products such as

mesalamine extended-release capsules. Monitor complete blood cell counts and platelet counts in elderly patients during treatment with mesalamine extended-release capsules. In general, consider the greater frequency of decreased hepatic, renal, or cardiac function, and of concomitant disease or other drug therapy in elderly patients when prescribing mesalamine extended-release capsules [see *Use in Specific Populations* ( 8.6)] .

## 8.6 Renal Impairment

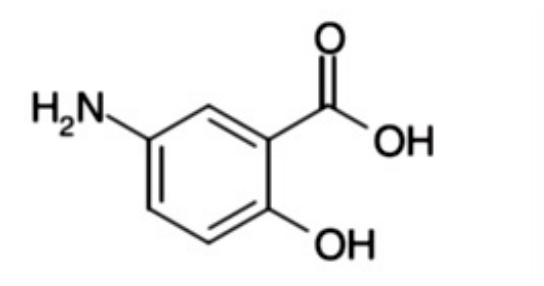
Mesalamine is known to be substantially excreted by the kidney, and the risk of adverse reactions to this drug may be greater in patients with impaired renal function. Evaluate renal function in all patients prior to initiation and periodically while on mesalamine extended-release capsules therapy. Monitor patients with known renal impairment or history of renal disease or taking nephrotoxic drugs for decreased renal function and mesalamine-related adverse reactions [see *Warnings and Precautions* ( 5.1), *Adverse Reactions* ( 6.2), *Drug Interactions* ( 7.2)].

## 10 OVERDOSAGE

Mesalamine extended-release capsules are an aminosalicylate, and symptoms of salicylate toxicity include nausea, vomiting and abdominal pain, tachypnea, hyperpnea, tinnitus, and neurologic symptoms (headache, dizziness, confusion, seizures). Severe salicylate intoxication may lead to electrolyte and blood pH imbalance and potentially to other organ (e.g., renal and liver) damage. There is no specific antidote for mesalamine overdose; however, conventional therapy for salicylate toxicity may be beneficial in the event of acute overdosage and may include gastrointestinal tract decontamination to prevent further absorption. Correct fluid and electrolyte imbalance by the administration of appropriate intravenous therapy and maintain adequate renal function. Mesalamine extended-release capsules are a pH-dependent delayed-release product and this factor should be considered when treating a suspected overdose.

## 11 DESCRIPTION

Each mesalamine extended-release capsule is a delayed-and extended-release dosage form for oral administration. Each capsule contains 0.375 g of mesalamine USP (5-aminosalicylic acid, 5-ASA), an aminosalicylate. The structural formula of mesalamine is:



Molecular Weight: 153.14

Molecular Formula: C<sub>7</sub>H<sub>7</sub>NO<sub>3</sub>

Each mesalamine extended-release capsules, USP contains granules composed of

mesalamine in a polymer matrix with an enteric coating that dissolves at pH 6 and above.

The inactive ingredients of mesalamine extended-release capsules USP are microcrystalline cellulose, ethyl acrylate and methyl methacrylate copolymer nonoxynol 100 dispersion, colloidal silicon dioxide, magnesium stearate, methacrylic acid and methyl methacrylate copolymer, sodium lauryl sulphate, talc, triethyl citrate, hypromellose, titanium dioxide, polyethylene glycol, vanillin, gelatin, FD and C Blue # 1, FD and C Red #3, edible black ink which contains shellac, propylene glycol, black iron oxide, potassium hydroxide.

FDA approved dissolution test specifications differ from USP acceptance criteria

## 12 CLINICAL PHARMACOLOGY

### 12.1 Mechanism of Action

The mechanism of action of mesalamine (5-ASA) is not fully understood, but appears to be a local anti-inflammatory effect on colonic epithelial cells. Mucosal production of arachidonic acid metabolites, both through the cyclooxygenase pathways, i.e., prostanoids, and through the lipoxygenase pathways, i.e., leukotrienes and hydroxyeicosatetraenoic acids, is increased in patients with ulcerative colitis, and it is possible that 5-ASA diminishes inflammation by blocking production of arachidonic acid metabolites.

### 12.3 Pharmacokinetics

#### Absorption

The pharmacokinetics of 5-ASA and its metabolite, N-acetyl-5-aminosalicylic acid (N-Ac-5-ASA), were studied after a single and multiple oral doses of 1.5 g mesalamine extended-release capsules in a crossover study in healthy subjects under fasting conditions. In the multiple-dose period, each subject received mesalamine extended-release capsules 1.5 g (four 0.375 g capsules) once daily for 7 consecutive days. Steady state was reached on Day 6 of once daily dosing based on trough concentrations.

After single and multiple doses of mesalamine extended-release capsules, peak plasma concentrations were observed at about 4 hours post-dose. At steady state, moderate increases (1.5-fold and 1.7-fold) in systemic exposure (AUC<sub>0-24</sub>) to 5-ASA and N-Ac-5-ASA were observed when compared with a single-dose of mesalamine extended-release capsules.

Pharmacokinetic parameters after a single dose of 1.5 g mesalamine extended-release capsules and at steady state in healthy subjects under fasting condition are shown in Table 2.

**Table 2: Single Dose and Multiple Dose Mean ( $\pm$ SD) Plasma Pharmacokinetic Parameters of Mesalamine (5-ASA) and N-Ac-5-ASA After 1.5 g Mesalamine Extended-Release Capsules Administration in Healthy Subjects**

Mesalamine (5-ASA)	Single Dose	Multiple Dose <sup>c</sup>
--------------------	-------------	----------------------------

	(n=24)	(n=24)
AUC <sub>0-24</sub> (mcg*h/mL)	11 ± 5	17 ± 6
AUC <sub>0-inf</sub> (mcg*h/mL)	14 ± 5	-
C <sub>max</sub> (mcg/mL)	2.1 ± 1.1	2.7 ± 1.1
T <sub>max</sub> (h) <sup>a</sup>	4 (2, 16)	4 (2,8)
t <sub>1/2</sub> (h) <sup>b</sup>	9 ± 7	10 ± 8
<b>N-Ac-5-ASA</b>		
AUC <sub>0-24</sub> (mcg*h/mL)	26 ± 6	37 ± 9
AUC <sub>0-inf</sub> (mcg*h/mL)	51 ± 23	-
C <sub>max</sub> (mcg/mL)	2.8 ± 0.8	3.4 ± 0.9
T <sub>max</sub> (h) <sup>a</sup>	4 (4,12)	5 (2,8)
t <sub>1/2</sub> (h) <sup>b</sup>	12 ± 11	14 ± 10

<sup>a</sup> Median (range); <sup>b</sup> Harmonic mean (pseudo SD); <sup>c</sup> after 7 days of treatment

In a separate study (n = 30), it was observed that under fasting conditions about 32% ± 11% (mean ± SD) of the administered dose was systemically absorbed based on the combined cumulative urinary excretion of 5-ASA and N-Ac-5-ASA over 96 hours post-dose.

#### *Food Effects*

The effect of a high fat meal intake on absorption of mesalamine granules (the same granules contained in mesalamine extended-release capsules) was evaluated in 30 healthy subjects. Subjects received 1.6 g of mesalamine granules in sachet (2 x 0.8 g) following an overnight fast or a high fat meal in a crossover study. Under fed conditions, T<sub>max</sub> for both 5-ASA and N-Ac-5-ASA was prolonged by 4 and 2 hours, respectively. A high fat meal did not affect C<sub>max</sub> for 5-ASA, but a 27% increase in the cumulative urinary excretion of 5-ASA was observed with a high fat meal. The overall extent of absorption of N-Ac-5-ASA was not affected by a high fat meal [see *Dosage and Administration* ( 2)] .

#### Distribution

In an *in vitro* study, at 2.5 mcg/mL, mesalamine and N-Ac-5-ASA are 43 ± 6% and 78 ± 1% bound, respectively, to plasma proteins. Protein binding of N-Ac-5-ASA does not appear to be concentration dependent at concentrations ranging from 1 to 10 mcg/mL.

#### Elimination

##### *Metabolism*

The major metabolite of mesalamine is N-acetyl-5-aminosalicylic acid (N-Ac-5-ASA). It is formed by N-acetyltransferase activity in the liver and intestinal mucosa.

##### *Excretion*

Following single and multiple doses of mesalamine extended-release capsule, the mean half-lives were 9 to 10 hours for 5-ASA, and 12 to 14 hours for N-Ac-5-ASA. Of the approximately 32% of the dose absorbed, about 2% of the dose was excreted

unchanged in the urine, compared with about 30% of the dose excreted as N-Ac-5-ASA.

### Drug Interaction Studies

In an *in vitro* study using human liver microsomes, 5-ASA and its metabolite, N-Ac-5-ASA, were shown not to inhibit the major CYP enzymes evaluated (CYP1A2, CYP2C9, CYP2C19, CYP2D6, and CYP3A4). Therefore, mesalamine and its metabolite are not expected to inhibit the metabolism of other drugs that are substrates of CYP1A2, CYP2C9, CYP2C19, CYP2D6, or CYP3A4.

## **13 NONCLINICAL TOXICOLOGY**

### **13.1 Carcinogenesis, Mutagenesis, Impairment of Fertility**

Dietary mesalamine was not carcinogenic in rats at doses as high as 480 mg/kg/day, or in mice at 2000 mg/kg/day. These doses are about 2.6 and 5.4 times the recommended human dose of granulated mesalamine capsules of 1.5 g/day (30 mg/kg if 50 kg body weight assumed or 1110 mg/m<sup>2</sup>), respectively, based on body surface area.

Mesalamine was negative in the Ames test, the mouse lymphoma cell (L5178Y/TK+/-) forward mutation test, the sister chromatid exchange assay in the Chinese hamster bone marrow test, and the mouse bone marrow micronucleus test.

No effects on fertility or reproductive performance in male and female rats were observed with oral mesalamine doses up to 320 mg/kg (about 1.7 times the recommended human dose based on body surface area).

### **13.2 Animal Toxicology and/or Pharmacology**

#### Renal Toxicity

Animal studies with mesalamine (13-week and 26-week oral toxicity studies in rats, and 26-week and 52-week oral toxicity studies in dogs) have shown the kidney to be the major target organ of mesalamine toxicity. Single oral doses of 800 mg/kg (about 2.2 times the recommended human dose, on the basis of body surface area) and 1800 mg/kg (about 9.7 times the recommended human dose, on the basis of body surface area) of mesalamine were lethal to mice and rats, respectively, and resulted in gastrointestinal and renal toxicity. Oral doses of 40 mg/kg/day (about 0.20 times the human dose, on the basis of body surface area) produced minimal to slight tubular injury, and doses of 160 mg/kg/day (about 0.90 times the human dose, on the basis of body surface area) or higher in rats produced renal lesions including tubular degeneration, tubular mineralization, and papillary necrosis. Oral doses of 60 mg/kg/day (about 1.1 times the human dose, on the basis of body surface area) or higher in dogs also produced renal lesions including tubular atrophy, interstitial cell infiltration, chronic nephritis, and papillary necrosis.

## **14 CLINICAL STUDIES**

Two similar, randomized, double-blind, placebo-controlled, multi-center studies were conducted in a total of 562 adult patients in remission from ulcerative colitis. The study populations had a mean age of 46 years (11% age 65 years or older), were 53% female,

and were primarily white (92%).

Ulcerative colitis disease activity was assessed using a modified Sutherland Disease Activity Index (DAI), which is a sum of four subscores based on stool frequency, rectal bleeding, mucosal appearance on endoscopy, and physician's rating of disease activity. Each subscore can range from 0 to 3, for a total possible DAI score of 12.

At baseline, approximately 80% of patients had a total DAI score of 0 or 1.0. Patients were randomized 2:1 to receive either mesalamine extended-release capsules 1.5 g or placebo once daily in the morning for six months. Patients were assessed at baseline, 1 month, 3 months, and 6 months in the clinic, with endoscopy performed at baseline, at end of study, or if clinical symptoms developed. Relapse was defined as a rectal bleeding subscale score of 1 or more and a mucosal appearance subscale score of 2 or more using the DAI. The analysis of the intent-to-treat population was a comparison of the proportions of patients who remained relapse-free at the end of six months of treatment. For the table below (Table 3) all patients who prematurely withdrew from the study for any reason were counted as relapses.

In both studies, the proportion of patients who remained relapse-free at six months was greater for mesalamine extended-release capsules than for placebo.

**Table 3: Percentage of Ulcerative Colitis Patients Relapse-Free\* Through 6 Months in Mesalamine Extended-Release Capsules Maintenance Studies**

	<b>Mesalamine extended-release capsules 1.5 g once daily % (# no relapse/N)</b>	<b>Placebo % (# no relapse/N)</b>	<b>Difference (95% C.I.)</b>	<b>P-value</b>
Study 1	68% (143/209)	51% (49/96)	17% (5.5, 29.2)	<0.001
Study 2	71% (117/164)	59% (55/93)	12% (0, 24.5)	0.046

\* Relapse counted as rectal bleeding score  $\geq 1$  and mucosal appearance score  $\geq 2$ , or premature withdrawal from study.

Examination of gender subgroups did not identify difference in response to mesalamine extended-release capsules among these subgroups. There were too few elderly and too few African-American patients to adequately assess difference in effects in those populations.

The use of mesalamine extended-release capsules for treating ulcerative colitis beyond six months has not been evaluated in controlled clinical trials.

## **16 HOW SUPPLIED/STORAGE AND HANDLING**

Mesalamine extended-release capsules, USP are available as light blue opaque, size "00" hard gelatin capsules filled with off- white to tan colored pellets. The capsules are

imprinted with "MES" on cap and "375" on body in black ink.

NDC 50268-577-15 (10 capsules per card, 5 cards per carton).

#### Storage:

Store at 20° to 25°C (68° to 77°F); excursions permitted between 15° and 30°C (59° and 86°F) [see USP Controlled Room Temperature].

Dispensed in Unit Dose Package. For Institutional Use Only.

## **17 PATIENT COUNSELING INFORMATION**

### Administration

Instruct patients:

- Swallow the capsules whole. Do not cut, break, crush or chew the capsules.
- Avoid co-administration of mesalamine extended-release capsules with antacids.
- Drink an adequate amount of fluids.
- Mesalamine extended-release capsules can be taken without regard to meals [see *Dosage and Administration ( 2)*].

### Renal Impairment

Inform patients that mesalamine extended-release capsules may decrease their renal function, especially if they have known renal impairment or are taking nephrotoxic drugs, including NSAIDs, and periodic monitoring of renal function will be performed while they are on therapy. Advise patients to complete all blood tests ordered by their healthcare provider [see *Warnings and Precautions ( 5.1)*, *Drug Interactions ( 7.2)*].

### Mesalamine-Induced Acute Intolerance Syndrome and Other Hypersensitivity Reactions

Inform patients of the signs and symptoms of hypersensitivity reactions. Instruct patients to stop taking Mesalamine extended-release capsules and report to their healthcare provider if they experience new or worsening symptoms of Acute Intolerance Syndrome (cramping, abdominal pain, bloody diarrhea, fever, headache, and rash) or other symptoms suggestive of mesalamine induced hypersensitivity [see *Warnings and Precautions ( 5.2, 5.3)*].

### Hepatic Failure

Inform patients with known liver disease of the signs and symptoms of worsening liver function and advise them to report to their healthcare provider if they experience such signs or symptoms [see *Warnings and Precautions ( 5.4)*].

### Severe Cutaneous Adverse Reactions

Inform patients of the signs and symptoms of severe cutaneous adverse reactions. Instruct patients to stop taking mesalamine extended-release capsules and report to their healthcare provider at first appearance of a severe cutaneous adverse reaction or other sign of hypersensitivity [see *Warnings and Precautions ( 5.5)*].

### Photosensitivity

Advise patients with pre-existing skin conditions to avoid sun exposure, wear protective clothing, and use a broad-spectrum sunscreen when outdoors [see *Warnings and*

*Precautions ( 5.6)] .*

### Nephrolithiasis

Instruct patients to drink an adequate amount of fluids during treatment in order to minimize the risk of kidney stone formation and to contact their healthcare provider if they experience signs or symptoms of a kidney stone (e.g., severe side or back pain, blood in the urine) [*see Warnings and Precautions ( 5.7)] .*

### Blood Disorders

Inform elderly patients and those taking azathioprine or 6-mercaptopurine of the risk for blood disorders and the need for periodic monitoring of complete blood cell counts and platelet counts while on therapy. Advise patients to complete all blood tests ordered by their healthcare provider [*see Drug Interactions ( 7.3), Use in Specific Populations ( 8.5)] .*

Manufacture for:

AvKARE

Pulaski, TN 38478

Mfg. Rev. 07/22

AV 01/23 (W)

AvPAK

**PACKAGE LABEL.PRINCIPAL DISPLAY PANEL**



NDC 50268-577-15

# Mesalamine Extended-Release Capsules, USP

0.375 g

Rx Only  
50 Capsules (5 x 10) Unit Dose



NDC 50268-577-15

# Mesalamine Extended-Release Capsules, USP

0.375 g

Rx Only  
50 Capsules (5 x 10) Unit Dose



Each capsule contains:  
0.375 g of mesalamine.

Usual Dosage: See package insert for full prescribing information.

Keep out of reach of children.

Storage: Store at 20° to 25°C (68° to 77°F); excursions permitted between 15° and 30°C (59° and 86°F) [see USP Controlled Room Temperature].

Manufactured for:  
AvKARE  
Pulaski, TN 38478  
www.avkare.com



Mfg. Rev. 7/22

AV 01/23 (W)

## MESALAMINE

mesalamine capsule, extended release

### Product Information

<b>Product Type</b>	HUMAN PRESCRIPTION DRUG	<b>Item Code (Source)</b>	NDC:50268-577(NDC:67877-717)
<b>Route of Administration</b>	ORAL		

### Active Ingredient/Active Moiety

Ingredient Name	Basis of Strength	Strength
MESALAMINE (UNII: 4Q81I59GXC) (MESALAMINE - UNII:4Q81I59GXC)	MESALAMINE	0.375 g

## Inactive Ingredients

Ingredient Name	Strength
<b>MICROCRYSTALLINE CELLULOSE</b> (UNII: OP1R32D61U)	
<b>HYPROMELLOSE 2208 (4000 MPA.S)</b> (UNII: 39J80LT57T)	
<b>SILICON DIOXIDE</b> (UNII: ETJ7Z6XBU4)	
<b>MAGNESIUM STEARATE</b> (UNII: 70097M6I30)	
<b>ETHYL ACRYLATE AND METHYL METHACRYLATE COPOLYMER (2:1; 750000 MW)</b> (UNII: P2OM2Q86BI)	
<b>METHACRYLIC ACID - METHYL METHACRYLATE COPOLYMER (1:1)</b> (UNII: 74G4R6TH13)	
<b>TALC</b> (UNII: 7SEV7J4R1U)	
<b>TRIETHYL CITRATE</b> (UNII: 8Z96QXD6UM)	
<b>HYPROMELLOSE 2910 (5 MPA.S)</b> (UNII: R75537T0T4)	
<b>TITANIUM DIOXIDE</b> (UNII: 15FIX9V2JP)	
<b>POLYETHYLENE GLYCOL 400</b> (UNII: B697894SGQ)	
<b>VANILLIN</b> (UNII: CHI530446X)	
<b>GELATIN, UNSPECIFIED</b> (UNII: 2G86QN327L)	
<b>FD&amp;C BLUE NO. 1</b> (UNII: H3R47K3TBD)	
<b>FD&amp;C RED NO. 3</b> (UNII: PN2ZH5LOQY)	
<b>SHELLAC</b> (UNII: 46N107B71O)	
<b>FERROSFERRIC OXIDE</b> (UNII: XM0M87F357)	
<b>SODIUM LAURYL SULFATE</b> (UNII: 368GB5141J)	
<b>NONOXYNOL-100</b> (UNII: A906T4D368)	

## Product Characteristics

<b>Color</b>	blue	<b>Score</b>	no score
<b>Shape</b>	CAPSULE	<b>Size</b>	24mm
<b>Flavor</b>	VANILLA	<b>Imprint Code</b>	MES;375
<b>Contains</b>			

## Packaging

#	Item Code	Package Description	Marketing Start Date	Marketing End Date
1	NDC:50268-577-15	50 in 1 BOX	01/16/2023	
1	NDC:50268-577-11	1 in 1 BLISTER PACK; Type 0: Not a Combination Product		

## Marketing Information

Marketing Category	Application Number or Monograph Citation	Marketing Start Date	Marketing End Date
ANDA	ANDA214242	01/16/2023	

**Labeler** - AvPAK (832926666)