

METAXALONE- metaxalone tablet

Primus Pharmaceuticals

HIGHLIGHTS OF PRESCRIBING INFORMATION

These highlights do not include all the information needed to use METAXALONE TABLETS, 640 mg, safely and effectively. See full prescribing information for METAXALONE TABLETS, 640 mg.

METAXALONE tablets, for oral use
Initial U.S. Approval: 1962

INDICATIONS AND USAGE

Metaxalone Tablets, 640 mg, is a muscle relaxant, indicated as an adjunct to rest, physical therapy, and other measures for the relief of discomforts associated with acute, painful musculoskeletal conditions in adult and pediatric patients 13 years of age and older. (1)

DOSAGE AND ADMINISTRATION

- Recommended dosage in adults and pediatric patients 13 years of age and older is 640 mg taken orally, with or without food, three to four times a day (2)
- Maximum recommended daily dosage is four tablets or 2,560 mg (2)
- Metaxalone Tablets 640 mg and SKELAXIN 800 mg tablets are not mutually substitutable on a mg-to-mg basis due to differences in pharmacokinetic profiles (12.3). When it is appropriate to switch (2):
- For patients who have been taking either product on an empty stomach, Metaxalone Tablets, 640 mg and SKELAXIN 800 mg tablets, may be switched.
- Stop SKELAXIN 800 mg three times a day and start Metaxalone Tablets 640 mg three times a day on an empty stomach OR stop SKELAXIN 800 mg four times a day and start Metaxalone Tablets 640 mg four times a day on an empty stomach.
- For patients who have been taking either product with food, do not switch between Metaxalone Tablets, 640 mg and SKELAXIN 800 mg tablets (2).

DOSAGE FORMS AND STRENGTHS

Tablets: 640 mg. (3)

CONTRAINDICATIONS

- Known hypersensitivity to any components of this product. (4)
- Known tendency to drug induced, hemolytic, or other anemias. (4)
- Severe renal or hepatic impairment.(4)

WARNINGS AND PRECAUTIONS

- Serotonin Syndrome: Cases of serotonin syndrome, a potentially life-threatening condition, have been reported during concomitant use of metaxalone (within the recommended dosage range) and other serotonergic drugs and with the use of metaxalone as the only serotonergic drug taken at a dosage higher than the recommended dosage. If concomitant use is warranted, carefully observe the patient, particularly during treatment initiation and dosage increases. Discontinue Metaxalone Tablets, 640 mg if serotonin syndrome is suspected or it occurs. (5.1, 7.1)
- Central Nervous System (CNS) Depression: Metaxalone Tablets, 640 mg may impair mental and/or physical abilities required for the performance of hazardous tasks, such as operating machinery or driving a motor vehicle, and may enhance the effects of other CNS depressants including alcohol. Follow patients closely for signs and symptoms of respiratory depression and sedation. If concomitant use is warranted, closely monitor for signs of respiratory depression and sedation, particularly during treatment initiation and dosage increases. (5.2, 7.2)
- Risk Associated with Switching from Metaxalone Tablets, 640 mg Inappropriate switching on a mg-to-mg basis from Metaxalone Tablets, 640 mg to SKELAXIN (metaxalone) tablets, 800 mg to achieve the same total daily metaxalone dosage may result in a clinically significant decrease in metaxalone exposure and effect (2). Metaxalone Tablets, 640 mg and SKELAXIN (metaxalone) tablets, 800 mg are not mutually substitutable on a mg-to-mg basis (5.3, 12.3).

ADVERSE REACTIONS

The most common adverse reactions to Metaxalone Tablets, 640 mg include drowsiness, dizziness, headache, and nervousness or "irritability", nausea, vomiting, gastrointestinal upset. (6)

To report SUSPECTED ADVERSE REACTIONS, contact Primus Pharmaceuticals, Inc. at 1-877-526-4040 and www.primusrx.com or FDA at 1-800-FDA-1088 or www.fda.gov/medwatch.

USE IN SPECIFIC POPULATIONS

- Geriatric Use: Geriatric patients may be especially susceptible to CNS depression associated with Metaxalone Tablets, 640 mg use. (8.5)
- Hepatic Impairment: Consider additional monitoring in patients with mild to moderate hepatic impairment. (4, 8.6)
- Renal impairment: Consider additional monitoring in patients with mild to moderate renal impairment (4, 8.7)

See 17 for **PATIENT COUNSELING INFORMATION**.

Revised: 6/2023

FULL PRESCRIBING INFORMATION: CONTENTS*

1 INDICATIONS AND USAGE

2 DOSAGE AND ADMINISTRATION

3 DOSAGE FORMS AND STRENGTHS

4 CONTRAINDICATIONS

5 WARNINGS AND PRECAUTIONS

5.1 Serotonin Syndrome

5.2 Central Nervous System (CNS) Depression

5.3 Risk Associated with Inappropriate Switching from Metaxalone Tablets, 640 mg

6 ADVERSE REACTIONS

7 DRUG INTERACTIONS

7.1 Serotonergic Drugs

7.2 CNS Depressants

7.3 Interaction of Metaxalone with Benedict's Tests

8 USE IN SPECIFIC POPULATIONS

8.1 Pregnancy

8.2 Lactation

8.4 Pediatric Use

8.5 Geriatric Use

8.6 Hepatic Impairment

8.7 Renal Impairment

10 OVERDOSAGE

11 DESCRIPTION

12 CLINICAL PHARMACOLOGY

12.1 Mechanism of Action

12.2 Pharmacodynamics

12.3 Pharmacokinetics

13 NONCLINICAL TOXICOLOGY

13.1 Carcinogenesis, Mutagenesis, Impairment of Fertility

16 HOW SUPPLIED/STORAGE AND HANDLING

17 PATIENT COUNSELING INFORMATION

* Sections or subsections omitted from the full prescribing information are not listed.

FULL PRESCRIBING INFORMATION

1 INDICATIONS AND USAGE

Metaxalone Tablets, 640 mg, are indicated as an adjunct to rest, physical therapy, and other measures for the relief of discomforts associated with acute, painful musculoskeletal conditions in adults and pediatric patients 13 years of age and older.

2 DOSAGE AND ADMINISTRATION

The recommended dosage in adults and pediatric patients 13 years of age and older is 640 mg taken orally with or without food, three to four times a day. The maximum recommended daily dosage is four tablets or 2,560 mg.

Metaxalone Tablets, 640 mg and SKELAXIN 800 mg are not mutually substitutable on a mg-to-mg basis due to differences in pharmacokinetic profiles (12.3) [see *Warnings and Precautions* (5.3) and *Clinical Pharmacology* (12.3)]. When it is appropriate to switch:

- For patients who have been taking either product on an empty stomach, Metaxalone Tablets, 640 mg and SKELAXIN 800 mg tablets may be switched.
- Stop SKELAXIN 800 mg three times a day and start Metaxalone Tablets 640 mg three times a day on an empty stomach, OR stop SKELAXIN 800 mg four times a day and start Metaxalone Tablets 640 mg four times a day on an empty stomach.

For patients who have been taking either product with food, do not switch between Metaxalone Tablets, 640mg and SKELAXIN 800mg tablets.

3 DOSAGE FORMS AND STRENGTHS

Tablets: 640 mg oval, peach-colored, debossed with M640 on one side and without markings on the other side.

4 CONTRAINDICATIONS

The use of Metaxalone Tablets, 640 mg is contraindicated in patients with:

- Known hypersensitivity to any components of this product.
- Known tendency for drug-induced, hemolytic, or other anemias.
- Severe renal or hepatic impairment.

5 WARNINGS AND PRECAUTIONS

5.1 Serotonin Syndrome

Cases of serotonin syndrome, a potentially life-threatening condition, have been reported during concomitant use of metaxalone (within the recommended dosage range) and other serotonergic drugs [see *Drug Interactions* (7)] and with the use of metaxalone as the only serotonergic drug taken at a dosage higher than the recommended dosage [See *Overdosage* (10)]. Serotonergic drugs include selective serotonin reuptake inhibitors (SSRIs), serotonin and norepinephrine reuptake inhibitors

(SNRIs), tricyclic antidepressants (TCAs), triptans, 5-HT₃ receptor antagonists, opioids (particularly fentanyl, meperidine, and methadone), drugs that affect the serotonergic neurotransmitter system (e.g., mirtazapine, trazodone, tramadol), and drugs that impair metabolism of serotonin (including monoamine oxidase (MAO) inhibitors, both those intended to treat psychiatric disorders and also others, such as linezolid and intravenous methylene blue) [*See Drug Interactions (7.2)*].

Serotonin syndrome symptoms may include mental status changes (e.g., agitation, hallucinations, coma), autonomic instability (e.g., tachycardia, labile blood pressure, hyperthermia), neuromuscular aberrations (e.g., hyperreflexia, incoordination, rigidity), and/or gastrointestinal symptoms (e.g., nausea, vomiting, diarrhea). The onset of symptoms generally occurs within several hours to a few days after initiation of a serotonergic drug, but may occur later than that.

If concomitant use of Metaxalone Tablets, 640 mg and another serotonergic drug is warranted, reassess the patient, particularly during treatment initiation and dosage modification. Discontinue Metaxalone Tablets, 640 mg if serotonin syndrome is suspected or occurs.

5.2 Central Nervous System (CNS) Depression

Because of central nervous system (CNS) depressant effects, metaxalone may impair mental and/or physical abilities required for performance of hazardous tasks, such as operating machinery or driving a motor vehicle, especially when used with other CNS depressants including alcohol. Geriatric patients may be especially susceptible to CNS depression associated with metaxalone use. When used concomitantly, the sedative effects of metaxalone and other CNS depressants (e.g., alcohol, benzodiazepines, opioids, tricyclic antidepressants) may be additive [*see Drug Interactions (7)*].

Skeletal muscle relaxants as a class have been associated with drowsiness and sedation to varying degrees.

In a crossover trial, participants taking SKELAXIN 800 mg tablets reported a 10.7% incidence of adverse events characterized as “nervous system disorders” (dizziness; lethargy; headache), compared to 0% among participants taking Metaxalone Tablets, 640 mg.

Follow patients treated with Metaxalone Tablets, 640 mg closely for signs and symptoms of respiratory depression and sedation. If concomitant use of metaxalone and another CNS depressant is warranted, closely monitor for signs of respiratory depression and sedation, particularly during treatment initiation and dosage modification.

5.3 Risk Associated with Inappropriate Switching from Metaxalone Tablets, 640 mg

Inappropriate switching on a mg-to-mg basis from Metaxalone Tablets, 640 mg to SKELAXIN (metaxalone) tablets, 800 mg to achieve the same total daily metaxalone dosage may result in a clinically significant decrease in metaxalone exposure and effect. [*see Dosage and Administration (2)*]. Metaxalone Tablets 640 mg and SKELAXIN (metaxalone) tablets, 800 mg are not mutually substitutable on a mg-to-mg basis [*see Clinical Pharmacology (12.3)*].

It is generally inappropriate to switch between Metaxalone Tablets, 640 mg and SKELAXIN 800 mg tablets to mediate metaxalone-associated allergic or hypersensitive

adverse reactions.

For recommendations on how to switch from SKELAXIN (metaxalone) tablets, 800 mg, to Metaxalone Tablets, 640 mg, see *Dosage and Administration (2)*.

6 ADVERSE REACTIONS

The following adverse reactions associated with the use of metaxalone were identified in clinical studies or postmarketing reports. Because some of these reactions were reported voluntarily from a population of uncertain size, it is not always possible to reliably estimate their frequency or establish a causal relationship to drug exposure. The most frequent reactions to metaxalone were:

- CNS: drowsiness, dizziness, headache, and nervousness or “irritability”
- Digestive: nausea, vomiting, gastrointestinal upset.

Other adverse reactions were:

- Allergic: anaphylaxis have been reported with metaxalone.
- CNS: cases of serotonin syndrome, a potentially life-threatening condition, have been reported during concomitant use of metaxalone (within the recommended dosage range) and other serotonergic drugs and with the use of metaxalone as the only serotonergic drug taken at a dosage higher than the recommended dosage [see *Warnings and Precautions (5.1)*, *Drug Interactions (7.2)*, and *Overdosage (10)*].
- Hematologic: leucopenia; hemolytic anemia
- Hepatobiliary: jaundice.
- Immune System: hypersensitivity reaction, rash with or without pruritus.

7 DRUG INTERACTIONS

7.1 Serotonergic Drugs

If concomitant use of metaxalone and another serotonergic drug is warranted, carefully observe the patient, particularly during treatment initiation and dosage modification. Discontinue Metaxalone Tablets, 640 mg if serotonin syndrome is suspected or if it occurs.

Serotonin syndrome has resulted from concomitant use of metaxalone (within the recommended dosage range) and other serotonergic drugs [see *Warnings and Precautions (5.1)*].

Serotonergic drugs include selective serotonin reuptake inhibitors (SSRIs), serotonin and norepinephrine reuptake inhibitors (SNRIs), tricyclic antidepressants (TCAs), triptans, 5-HT₃ receptor antagonists, opioids (particularly fentanyl, meperidine, and methadone), drugs that affect the serotonin neurotransmitter system (e.g., mirtazapine, trazodone, tramadol), monoamine oxidase (MAO) inhibitors (those intended to treat psychiatric disorders and also others, such as linezolid and intravenous methylene blue).

7.2 CNS Depressants

If concomitant use of Metaxalone Tablets, 640 mg and another CNS depressant is warranted, closely monitor for signs of respiratory depression and sedation, particularly during treatment initiation and dosage modification.

Due to the additive pharmacologic effect, concomitant use of Metaxalone Tablets, 640 mg with other CNS depressants may increase the risk of sedation and respiratory depression [see *Warnings and Precautions (5.2)*].

7.3 Interaction of Metaxalone with Benedict's Tests

False-positive Benedict's tests, due to an unknown reducing substance, have been noted in SKELAXIN (metaxalone) 800mg tablets treated patients. A glucose-specific test will differentiate findings.

8 USE IN SPECIFIC POPULATIONS

8.1 Pregnancy

Risk Summary

There are no available data on metaxalone use in pregnancy to evaluate for a drug-associated risk of major birth defects, miscarriage or other adverse maternal or fetal outcomes despite decades of metaxalone use. Reproduction studies in rats have not revealed evidence of impaired fertility or harm to fetus due to metaxalone.

The estimated background risk of major birth defects and miscarriage for the indicated population is unknown. All pregnancies have a background risk of birth defect, loss, or other adverse outcomes. In the U.S. general population, the estimated risk of major birth defects and miscarriage in clinically recognized pregnancies is 2% to 4% and 15% to 20%, respectively.

8.2 Lactation

Risk Summary

There are no data on the presence of metaxalone or its metabolite in either human or animal milk, the effects on the breastfed infant, or the effects on milk production. The developmental and health benefits of breastfeeding should be considered along with the mother's clinical need for metaxalone and any potential adverse effects on the breastfed infant from metaxalone or from the underlying maternal condition.

8.4 Pediatric Use

Metaxalone Tablets, 640 mg are indicated as an adjunct to rest, physical therapy, and other measures for the relief of discomforts associated with acute, painful musculoskeletal conditions in pediatric patients 13 years of age and older.

The safety and effectiveness of Metaxalone Tablets, 640 mg in pediatric patients less than 13 years of age have not been established.

8.5 Geriatric Use

Clinical studies of Metaxalone Tablets, 640 mg did not include sufficient numbers of patients 65 years of age and older to determine whether they respond differently from younger adult patients. The effects of age on the pharmacokinetics of Metaxalone Tablets, 640 mg have not been evaluated. Geriatric patients may be especially susceptible to CNS depression associated with metaxalone use [see *Warnings and*

Precautions (5.2)].

8.6 Hepatic Impairment

Metaxalone Tablets, 640 mg are contraindicated in patients with severe hepatic impairment. Metaxalone Tablets, 640 mg should be used with caution and additional monitoring should be considered in patients with mild to moderate hepatic impairment. The effect of hepatic impairment on metaxalone pharmacokinetics is unknown; however, metaxalone undergoes extensive hepatic metabolism [see *Clinical Pharmacology (12.3)*].

8.7 Renal Impairment

Metaxalone Tablets, 640 mg are contraindicated in patients with severe renal impairment. Metaxalone Tablets, 640 mg should be used with caution and additional monitoring should be considered in patients with mild to moderate renal impairment. The effect of renal impairment on metaxalone pharmacokinetics is unknown; however, metaxalone undergoes renal excretion as unidentified metabolites [see *Clinical Pharmacology (12.3)*].

10 OVERDOSAGE

Clinical Presentation

- Cardiovascular effects may include tachycardia and hypertension, but bradycardia and hypotension have also been reported.
- CNS manifestations include CNS depression, agitation, hallucinations, delusions, seizures, respiratory depression, and coma.
- Overdose can be fatal, especially in combination with CNS depressant drugs (including alcohol).
- Serotonin syndrome, leading to muscle rigidity, tremor, and hyperthermia, has been reported [see *Warnings and Precautions (5.1)*].

Treatment of Overdose

- Monitor for CNS and respiratory depression, managing airway as needed.
- Gastrointestinal decontamination procedures should generally be avoided. Aspiration may result from CNS depression and seizures; emesis is not recommended.
- Extracorporeal elimination such as hemodialysis or plasmapheresis have no clinical benefit.

Consider contacting the Poison Help line (1-800-222-1222) or a medical toxicologist for additional overdose management recommendations.

Annual reports by the National Poison Data System (NPDS) from 2017-2021 contain 33,743 cumulative incidents of single drug exposures (ingestions) involving the most commonly prescribed skeletal muscle relaxants (SMRs). When grouped into distinct medical outcome categories by severity of resulting reaction or death, (i) metaxalone, and (ii) methocarbamol are reported at lower rates than other SMRs of “Moderate effect” or “Major effect or Death”¹.

¹ See <https://doi.org/10.1080/15563650.2022.2132768> pg 1642 for Medical Outcome definitions.

An active comparator cohort study spanning 2000 to 2019 analyzed healthcare

utilization data from four US commercial and public insurance databases. The study examined risk of opioid overdose among patients on long-term opioid therapy who concurrently initiate skeletal muscle relaxants. Among the SMRs included in the study, metaxalone had the most favorable overdose risk profile based on weighted hazard ratio analysis².

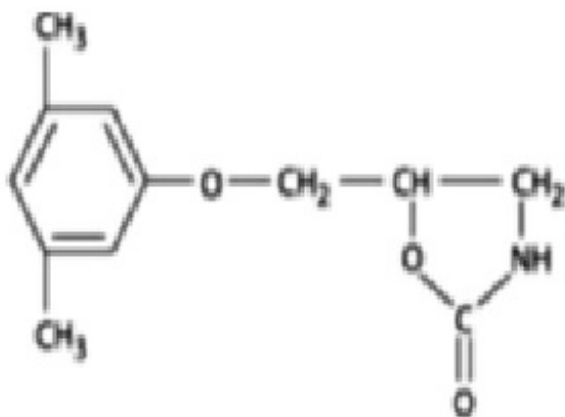
² See Neurology® 2022;99:e1432-e1442. <https://n.neurology.org/content/99/13/e1432>

11 DESCRIPTION

Metaxalone Tablets, 640 mg for oral administration, are available as 640 mg oval, peach-colored tablets, debossed with M640 on one side and no markings on the other side.

Each tablet contains 640 mg of micronized and non-micronized metaxalone, a muscle relaxant, and the following inactive ingredients: alginic acid, FD&C yellow #6, lactose monohydrate, magnesium stearate, propylene glycol alginate and povidone.

Chemically, metaxalone is 5-[(3, 5- dimethylphenoxy) methyl]-2-oxazolidinone. The empirical formula is C₁₂H₁₅NO₃, which corresponds to a molecular weight of 221.25. The structural formula is:



Metaxalone is a white to almost white, odorless crystalline powder freely soluble in chloroform, soluble in methanol and in 96% ethanol, but practically insoluble in ether or water.

12 CLINICAL PHARMACOLOGY

12.1 Mechanism of Action

The mechanism of action of metaxalone as an adjunct to rest, physical therapy, and other measures for the relief of discomfort associated with acute, painful musculoskeletal conditions has not been established, but may be due to general CNS depression. Metaxalone has no direct action on the contractile mechanism of striated muscle, the motor end plate, or the nerve fiber.

12.2 Pharmacodynamics

The exposure-response relationship and time course of pharmacodynamic response for the safety and effectiveness of metaxalone not been fully characterized.

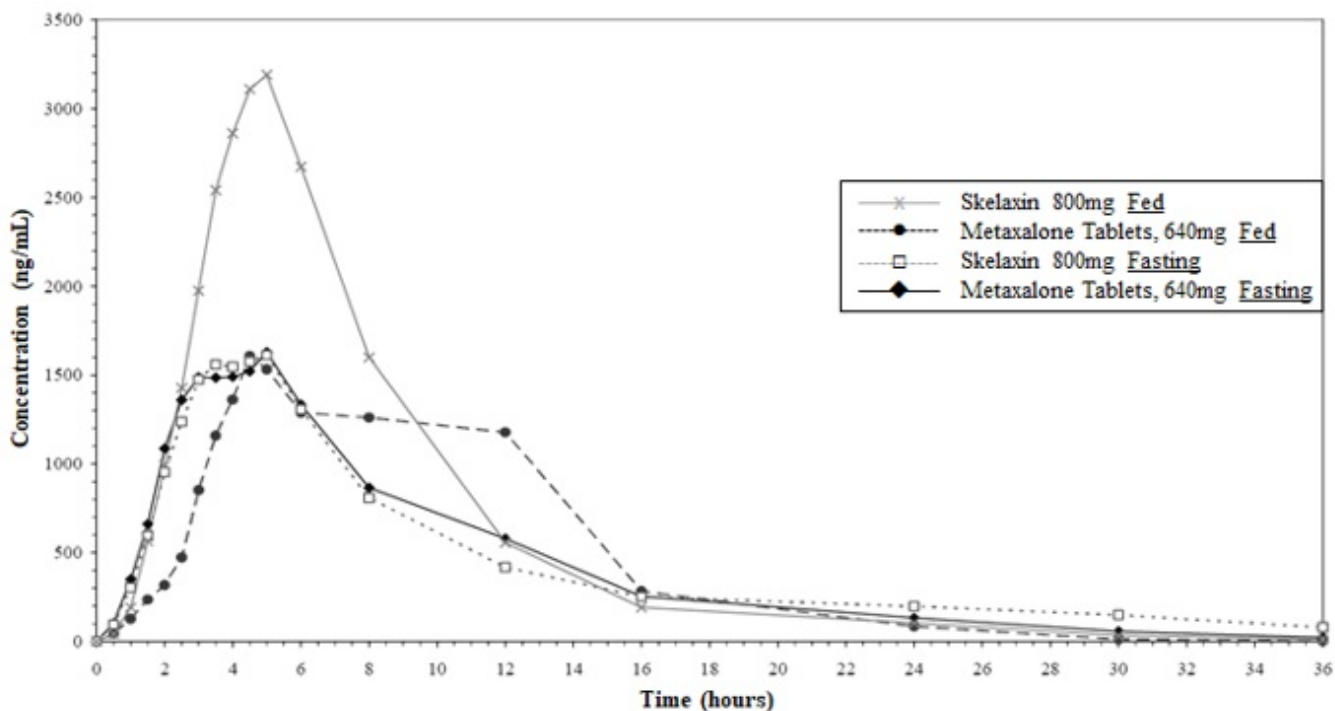
12.3 Pharmacokinetics

Absorption

In a relative bioavailability study in healthy adult volunteers, the C_{max} (peak plasma concentration) and AUC (extent of absorption) values of metaxalone from Metaxalone Tablets, 640 mg were found to be similar to those from SKELAXIN 800 mg tablets. After a single dose of Metaxalone Tablets, 640 mg, under fasted conditions, mean C_{max} and AUC values were 2 mcg/mL and 14 mcg*h/mL, respectively. The time-to-peak plasma concentration (T_{max}) occurred at 3h (range 1.5-12h). The plasma half-life in adult healthy subjects was approximately 5 hours after administration of Metaxalone Tablets, 640 mg.

Effect of Food: Compared to the fasted condition, intake of Metaxalone Tablets, 640 mg in the presence of a high fat meal resulted in a 23% increase in C_{max} , an increase in AUC (AUC_{0-t} and AUC_{∞}) by 7% and 6%, and T_{max} of 8 hours (range 3.5-24 hours). In comparison, SKELAXIN 800 mg tablets taken in the presence of a high fat meal yielded a 76% increase in C_{max} , an increase in AUC (AUC_{0-t} and AUC_{∞}) by 39% and 32% and a T_{max} of 5h (range 2.5-24h). See Figure 1.

Figure 1. Mean Metaxalone Plasma Concentrations (following Metaxalone Tablets 640 mg and SKELAXIN 800 mg in the Fasting and Fed States) versus Time (0 - 36 hours) for All Subjects (N = 47)



Distribution

For Metaxalone Tablets, 640 mg, the metaxalone apparent volume of distribution (V/F) was approximately 800 Liters. Metaxalone plasma protein binding is unknown.

Elimination

For Metaxalone Tablets, 640 mg, the metaxalone plasma half-life was approximately 5 hours.

Metabolism:

Metaxalone is metabolized by the liver. CYP1A2, CYP2D6, CYP2E1, and CYP3A4 and, to a lesser extent, CYP2C8, CYP2C9, and CYP2C19 are involved in metaxalone metabolism.

Excretion:

Metaxalone is excreted in the urine as unidentified metabolites.

Specific Populations

For Metaxalone Tablets, 640 mg, the effect of age, renal impairment, and hepatic impairment on the pharmacokinetics of metaxalone is unknown.

Drug Interaction Studies

In Vitro Studies:

Metaxalone does not inhibit CYP1A2, CYP2A6, CYP2B6, CYP2C8, CYP2C9, CYP2C19, CYP2D6, CYP2E1, and CYP3A4 or induce CYP1A2, CYP2B6, and CYP3A4.

13 NONCLINICAL TOXICOLOGY

13.1 Carcinogenesis, Mutagenesis, Impairment of Fertility

Carcinogenesis

Long-term studies to evaluate the carcinogenic potential of metaxalone have not been conducted.

Mutagenesis

Studies to evaluate the mutagenic potential of metaxalone have not been conducted.

Impairment of Fertility

Reproduction studies in rats have not revealed evidence of impaired fertility or harm to the fetus due to metaxalone.

16 HOW SUPPLIED/STORAGE AND HANDLING

Metaxalone Tablets, 640 mg are available as oval, peach-colored tablets, debossed with M640 on one side and no markings on the other side. Metaxalone Tablets, 640 mg are packaged as a bottle of 100 tablets, NDC 68040-712-38

Store at 20°C to 25°C (68°F to 77°F), excursions permitted to 15°C-30°C (59°F-86°F). [see USP Controlled Room Temperature].

17 PATIENT COUNSELING INFORMATION

Serotonin Syndrome

Inform patients that Metaxalone Tablets, 640 mg could cause a rare but potentially life-threatening condition called serotonin syndrome. Warn patients of the symptoms of serotonin syndrome and to seek medical attention right away if symptoms develop. Instruct patients to inform their healthcare providers if they are taking, or plan to take, serotonergic drugs [see *Warnings and Precautions (5.1)* and *Drug Interactions (7.1)*].

Central Nervous System Depression

Advise patients that Metaxalone Tablets, 640 mg may impair mental and/or physical abilities required for performance of hazardous tasks, such as operating machinery or driving a motor vehicle, especially when used with alcohol and other CNS depressants [see Drug Interactions (7.2)].

Distributed by: Primus Pharmaceuticals, Inc.

Scottsdale, AZ 85253

21503-02

1274C##-06/2023

PRINCIPAL DISPLAY PANEL

NDC 68040-712-38

Metaxalone Tablets

640 mg

Rx Only

SEALED FOR YOUR PROTECTION

100 Tablets

NDC 68040-712-38

Metaxalone Tablets

640 mg

Rx Only

SEALED FOR YOUR PROTECTION

100 Tablets

Each Tablet Contains:
Metaxalone 640 mg

RECOMMENDED DOSAGE: The recommended dose for adults and children 13 years of age and older is one tablet (640 mg) three to four times a day.

See package insert for prescribing information.

Store at 20°C to 25°C (68°F to 77°F), excursions permitted to 15°C to 30°C (59°F to 86°F) [See USP Controlled Room Temperature.]

Dispense in a well-closed child-resistant container.
Keep this and all other drugs out of the reach of children

Distributed By:
Primus Pharmaceuticals, Inc. 21501-02
Scottsdale, AZ 85253 1274C10-02/22

3 68040 71238 4

This area reserved for GTIN, S/N, LOT and EXP

METAXALONE

metaxalone tablet

Product Information

Product Type	HUMAN PRESCRIPTION DRUG	Item Code (Source)	NDC:68040-712
Route of Administration	ORAL		

Active Ingredient/Active Moiety

Ingredient Name	Basis of Strength	Strength
METAXALONE (UNII: 1NMA9J598Y) (METAXALONE - UNII:1NMA9J598Y)	METAXALONE	640 mg

Inactive Ingredients

Ingredient Name	Strength
ALGINIC ACID (UNII: 8C3Z4148WZ)	
FD&C YELLOW NO. 6 (UNII: H77VEI93A8)	
LACTOSE MONOHYDRATE (UNII: EWQ57Q8I5X)	
MAGNESIUM STEARATE (UNII: 70097M6I30)	
POVIDONE (UNII: FZ989GH94E)	
PROPYLENE GLYCOL ALGINATE (UNII: 26CD3J2R0C)	

Product Characteristics

Color	pink (light pink to pink)	Score	no score
Shape	OVAL	Size	19mm
Flavor		Imprint Code	M640
Contains			

Packaging

#	Item Code	Package Description	Marketing Start Date	Marketing End Date
1	NDC:68040-712-38	100 in 1 BOTTLE; Type 0: Not a Combination Product	02/01/2023	

Marketing Information

Marketing Category	Application Number or Monograph Citation	Marketing Start Date	Marketing End Date
NDA	NDA022503	02/01/2023	

Labeler - Primus Pharmaceuticals (130834745)**Registrant** - Primus Pharmaceuticals (130834745)**Establishment**

Name	Address	ID/FEI	Business Operations
Mikart, LLC		030034847	manufacture(68040-712)