

DERACIN 50 MEAL- chlortetracycline calcium granule
Pharmgate Animal Health

Deracin® 50 Meal

Chlortetracycline
 Type A Medicated Article

Active Drug Ingredients: Chlortetracycline as Chlortetracycline Calcium Complex Equivalent to 50 grams Chlortetracycline Hydrochloride/lb.

Ingredients: Dried *Streptomyces aureofaciens* fermentation product in a carrier suitable for incorporation in feed.

For Use in the Manufacture of Medicated Feeds.

CAUTION: For use in Dry Feeds ONLY. NOT FOR USE IN LIQUID FEED SUPPLEMENTS

Use Directions:	Mix sufficient Deracin® 50 Meal Type A Medicated Article to supply desired concentration of chlortetracycline per ton with part of the feed ingredients to make a preblend. Add the remainder of the ingredients and mix thoroughly. For specific use levels, see Indications.	
Mixing directions:		
	Level desired grams per ton	Amount of medicated Article per ton*
	10	1/5 lb
	50	1lb
	100	2 lb
	200	4 lb
	400	8 lb
	500	10 lb
INDICATIONS FOR USE		Chlortetracycline mg per lb body weight per day
Cattle		
Beef cattle (over 700 lbs.): Control of active infection of anaplasmosis caused by <i>Anaplasma marginale</i> susceptible to chlortetracycline.		0.5
Beef and Non-Lactating Dairy Cattle: As an aid in the control of active infection of anaplasmosis caused by <i>Anaplasma marginale</i> susceptible to chlortetracycline when delivered in a free-choice feed. Free-choice feed must be manufactured under a medicated feed mill license utilizing an FDAapproved formulation.		0.5-2.0
Calves, Beef, and Nonlactating Dairy Cattle: Treatment of bacterial enteritis caused by <i>Escherichia coli</i> and bacterial pneumonia caused by <i>Pasteurella multocida</i> organisms susceptible to chlortetracycline. Feed for not more than 5 days. The appropriate amount of Deracin® containing feed supplement may be mixed in the cattle's daily ration or administered as a top dress. If the Deracin® containing feed supplement is administered as a top dress, it must be spread uniformly on top of the ration and sufficient space must be provided so that all cattle can eat at the same time.		10
Swine		

Control of porcine proliferative enteropathies (ileitis) caused by <i>Lawsonia intracellularis</i> susceptible to chlortetracycline.	
Treatment of bacterial enteritis caused by <i>Escherichia coli</i> and <i>Salmonella choleraesuis</i> and bacterial pneumonia caused by <i>Pasteurella multocida</i> susceptible to chlortetracycline. (Note: This drug level is equivalent to approximately 400 grams per ton, depending on feed consumption and body weight). Feed for not more than 14 days.	10
Turkeys Control of complicating bacterial organisms associated with bluecomb (transmissible enteritis, coronaviral enteritis) susceptible to chlortetracycline. Feed continuously for 7 - 14 days.	25
INDICATIONS FOR USE	mg per head per day
Cattle Growing cattle (over 400 lbs.): For the reduction of the incidence of liver abscesses.	70
Beef Cattle: Control of bacterial pneumonia associated with shipping fever complex caused by <i>Pasteurella</i> spp. susceptible to chlortetracycline	350
Beef cattle (under 700 lbs.): Control of active infection of anaplasmosis caused by <i>Anaplasma marginale</i> susceptible to chlortetracycline.	350
Sheep Breeding Sheep: Reduction in the incidence of (vibriotic) abortions caused by <i>Campylobacter fetus</i> infection susceptible to chlortetracycline.	80
INDICATIONS FOR USE	In complete feed Chlortetracycline g per ton
Swine Reduction in the incidence of cervical lymphadenitis (jowl abscesses) caused by <i>Group E Streptococci</i> susceptible to chlortetracycline	50-100
Breeding Swine: Control of leptospirosis (reducing the instances of abortion and shedding of leptospirae) caused by <i>Leptospira pomona</i> susceptible to chlortetracycline. Feed continuously for not more than 14 days.	400
Ducks Control and treatment of fowl cholera caused by <i>Pasteurella multocida</i> susceptible to chlortetracycline. Feed in complete ration to provide from 8 to 28 mg per pound of body weight per day depending upon age and severity of disease. Feed for not more than 21 days.	200-400
Chickens Control of infectious synovitis caused by <i>Mycoplasma synoviae</i> susceptible to chlortetracycline. Feed continuously for 7 - 14 days.	100-200
Control of chronic respiratory disease (CRD) and air sac infection caused by <i>Mycoplasma gallisepticum</i> and <i>Escherichia coli</i> susceptible to chlortetracycline. Feed continuously for 7 - 14 days.	200-400
Reduction of mortality due to <i>Escherichia coli</i> infections susceptible to chlortetracycline. Feed for 5 days.	500
Turkeys Control of infectious synovitis caused by <i>Mycoplasma synoviae</i> susceptible to chlortetracycline. Feed continuously for 7 - 14 days.	200

Control of hexamitiasis caused by <i>Hexamita meleagrides</i> susceptible to chlortetracycline. Feed continuously for 7 - 14 days.	400
Turkey poults not over 4 weeks of age: Reduction of mortality due to paratyphoid caused by <i>Salmonella typhimurium</i> susceptible to chlortetracycline.	400

INDICATIONS FOR USE	Mg per g feed
----------------------------	----------------------

Psittacine birds Warning: Psittacosis, avian chlamydiosis, or ornithosis is a reportable communicable disease, transmissible between wild and domestic birds, other animals and man. Contact appropriate public health and regulatory officials. Caution: Aspergillosis may occur following prolonged treatment. Treatment of psittacine birds (parrots, macaws, cockatoos) suspected or known to be infected with psittacosis caused by <i>Chlamydia psittaci</i> sensitive to chlortetracycline. Feed continuously for 45 days. Each bird should consume an amount of medicated feed equal to one-fifth of this body weight daily. During treatment, parrots, macaws, and cockatoos should be kept individually or in pairs in clean cages.	10
---	----

* It is recommended that 1 pound of Deracin 50 Meal Type A Medicated Article be diluted with 4 pounds of one of the feed ingredients to form a 5 pound working premix. Use 1 pound of the working premix to make a preblend (see Use Directions) for a Type C feed containing 10g chlortetracycline/ton of feed.

Warning:

A withdrawal period has not been established for this product in preruminating calves.

Do not use In calves to be processed for veal.

Do not feed to ducks or turkeys producing eggs for human consumption.

Store below 25°C (77°F), excursions permitted to 40°C (104°F). Tightly reseal opened bags.

ANADA 200-510 Approved by FDA

Marketed by:

Pharmgate Animal Health, LLC

14040 Industrial Road

Omaha, NE 68144



Take Time

Observe Directions

PRINCIPAL DISPLAY PANEL - 22.68 Kg Bag Label

Deracin® 50 Meal

Chlortetracycline

Type A Medicated Article

CAUTION: Federal law restricts medicated feed containing this veterinary feed directive (VFD) drug to use by or on the order of a licensed veterinarian.

See mixing directions, claims, cautions and warnings on back.

Restricted Drug (California) – Use Only as Directed.
Not For Human Use.

Net wt. 50 LB (22.68 Kg)



Deracin® 50 Meal

Deracin® 50 Meal

Chlortetracycline Type A Medicated Article

CAUTION: Federal law restricts medicated feed containing this veterinary feed directive (VFD) drug to use by or on the order of a licensed veterinarian.

See mixing directions, claims, cautions and warnings on back.

Restricted Drug (California) - Use Only as Directed.
Not For Human Use.

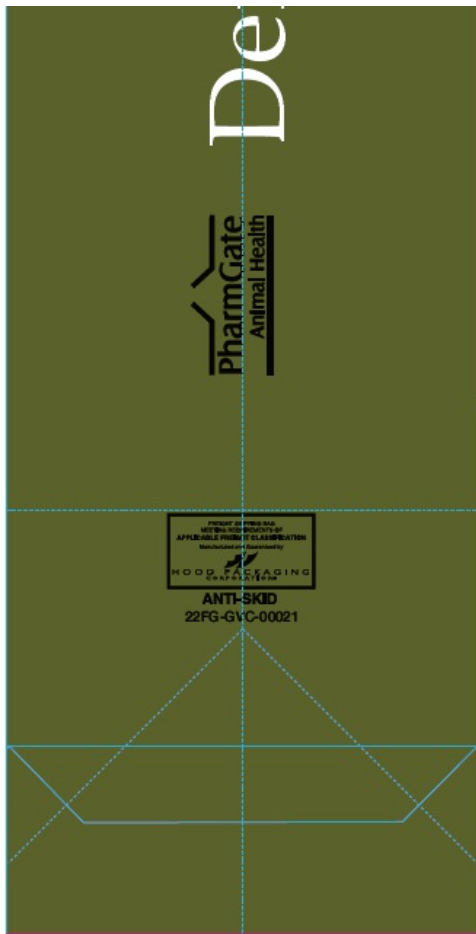
Net wt. 50 LB (22.68 Kg)

Deracin® 50 Meal

Deracin® 50 Meal

Chlortetracycline
Type A Medicated Article

Active Drug Ingredients		Chlortetracycline Calcium Complex equivalent to 50 grams Chlortetracycline Hydrochloride/lb.	
Ingredients		Dried <i>Streptococcus faecalis</i> fermentation products in a carrier suitable for incorporation in feed.	
For Use in the Manufacture of Medicated Feeds CAUTION: For use in Dry Feeds ONLY. NOT FOR USE IN LIQUID FEED SUPPLEMENTS			
Use Directions Mix sufficient Deracin® 50 Meal Type A Medicated Article to supply desired concentration of chlortetracycline per ton with part of the feed ingredients to make a preblend. Add the remainder of the ingredients and mix thoroughly. For specific use levels, see Indications.			
Mixing Directions	Level desired grams per ton	Amount of medicated article per ton*	* It is recommended that 1 pound of Deracin® 50 Meal Type A Medicated Article be diluted with 4 pounds of one of the feed ingredients to form a 5 pound working preblend. Use 1 pound of the working preblend to make a preblend (see Use Directions) for a Type C feed containing 10 g chlortetracycline/ton of feed.
	10	1.5 lb	
	50	1 lb	
	100	2 lb	
	200	4 lb	
	400	8 lb	
	500	10 lb	
Indications For Use	Chlortetracycline	Indications For Use	Isomycin (chlortetracycline)
Cattle Feed Cattle (over 700 lb) control of active infection of mycoplasmas caused by <i>Mycoplasma agalactiae</i> susceptible to chlortetracycline.	05	Swine Reduction in the incidence of cervical lymphadenitis (post-dyscemia) caused by Group E <i>Streptococcus</i> susceptible to chlortetracycline.	50-100
Feed and Non-Lactating Dairy Cattle: As an aid in the control of active infection of an organism caused by <i>Mycoplasma agalactiae</i> susceptible to chlortetracycline when delivered in a free-choice feed. Free-choice feed must be maintained under a total feed ration (including an FDA approved concentrate).	05-20	Control of chronic respiratory disease caused by <i>Mycoplasma agalactiae</i> susceptible to chlortetracycline. Feed continuously for not more than 14 days.	40
Calves, Feed, and Non-Lactating Dairy Cattle: Treatment of bacterial enteritis caused by <i>Enterobacteriaceae</i> susceptible to chlortetracycline. Treatment of bacterial enteritis caused by <i>Enterobacteriaceae</i> and <i>Salmonella</i> infections caused by <i>Salmonella</i> infections susceptible to chlortetracycline. (Dose: This drug feed is equivalent to approximately 400 grams per ton, depending on feed consumption and body weight). Feed for not more than 14 days.	10	Sheep Control of chronic respiratory disease (CRD) and its associated lesions caused by <i>Mycoplasma agalactiae</i> and <i>Bacteroides</i> cell susceptible to chlortetracycline. Feed continuously for 7 to 14 days.	20-40
Swine Control of post-dyscemic enteritis (diarrhea) caused by <i>Lawsonia intracellularis</i> susceptible to chlortetracycline. Treatment of bacterial enteritis caused by <i>Enterobacteriaceae</i> and <i>Salmonella</i> infections caused by <i>Salmonella</i> infections susceptible to chlortetracycline. (Dose: This drug feed is equivalent to approximately 400 grams per ton, depending on feed consumption and body weight). Feed for not more than 14 days.	10	Control of chronic respiratory disease (CRD) and its associated lesions caused by <i>Mycoplasma agalactiae</i> and <i>Bacteroides</i> cell susceptible to chlortetracycline. Feed continuously for 7 to 14 days.	20-40
Sheep Control of post-dyscemic enteritis (diarrhea) caused by <i>Lawsonia intracellularis</i> susceptible to chlortetracycline. Treatment of bacterial enteritis caused by <i>Enterobacteriaceae</i> and <i>Salmonella</i> infections caused by <i>Salmonella</i> infections susceptible to chlortetracycline. (Dose: This drug feed is equivalent to approximately 400 grams per ton, depending on feed consumption and body weight). Feed for not more than 14 days.	10	Reduction of morbidity due to <i>Escherichia coli</i> infections susceptible to chlortetracycline. Feed for 5 days.	50
Thoroughbred Control of conjunctival bacterial organisms associated with <i>Mycoplasma agalactiae</i> in both, conjunctivitis and <i>Mycoplasma agalactiae</i> .	25	Thoroughbred Control of conjunctival bacterial organisms associated with <i>Mycoplasma agalactiae</i> in both, conjunctivitis and <i>Mycoplasma agalactiae</i> .	40



chlortetracycline Feed continuously for 7 to 14 days		Wither period over 4 weeks of age. Reduction of assembly due to penicillin caused by Schistosoma uncinatum	
Indications For Use	Approved Policy	Indications For Use	Approved
Cattle Growing Cattle (over 400 lb): For the reduction of fibrin clots of liver disease.	30	Polliciosis Warning: Polliciosis, or lambs chop disease or conformation is a metabolic communicable disease transmissible between wild and domestic birds, other animals and man. Contact appropriate public health and regulatory officials. Caution: A sprue-like may occur following prolonged treatment.	
Feed Cattle: Control of bacterial pneumonia associated with shipping fever caused by Pasteurella spp. susceptible to chlortetracycline.	30	Treatment of obstructive bile (parotitis, mastitis, oedema) suspected or known to be related with infection caused by Clostridium perfringens sensitive to chlortetracycline. Feed orally for 45 days. Each bird should consume amount of medication equal to one-fifth of its body weight daily. During treatment, parotitis, mastitis, and oedema should be kept individually or in pairs in clean cages.	10
Feed Cattle (under 700 lb): Control of active infection of myxomatosis caused by Myxomatosis susceptible to chlortetracycline.	30		
Sheep Feed by Stomach: Reduction in fibrin clots (visceral) abortion caused by Clostridium perfringens sensitive to chlortetracycline.	30		
<p>A withdrawal period has not been established for this product in pre-ruminating calves.</p> <p>Warning: Do not use in calves to be processed for veal. Do not feed to ducks or turkeys producing eggs for human consumption.</p> <p>Store below 27°C (77°F); excursions permitted to 40°C (104°F). Tightly seal opened bags.</p> <p>ANADA 200530 Approved by FDA</p>			

Rev. 10-16
Bag D50



Marketed by:
Pharmgate Animal Health, LLC
14040 Industrial Road
Omaha, Nebraska 68144



DERACIN 50 MEAL

chlortetracycline calcium granule

Product Information

Product Type	VFD TYPE A MEDICATED ARTICLE ANIMAL DRUG	Item Code (Source)	NDC:51429-052
Route of Administration	ORAL		

Active Ingredient/Active Moiety

Ingredient Name	Basis of Strength	Strength
Chlortetracycline Calcium (UNII: NR4B2SX17S) (Chlortetracycline - UNII:WCK1KIQ23Q)	Chlortetracycline Hydrochloride	110 g in 1 kg

Packaging

#	Item Code	Package Description	Marketing Start Date	Marketing End Date
1	NDC:51429-052-05	22.68 kg in 1 BAG		

Marketing Information

Marketing Category	Application Number or Monograph Citation	Marketing Start Date	Marketing End Date
ANADA	ANADA200510	09/06/2018	

Labeler - Pharmgate Animal Health (833270817)

Registrant - Pharmgate LLC (079628671)

Revised: 9/2018

Pharmgate Animal Health