

**OPTASE- glycerin solution/ drops**  
**Scope Health Inc**

-----  
**Optase Hylo Relief Drops**

0.25 % glycerin

Keep out of reach of children.  
If swallowed get medical  
help or contact a poison  
control center right away.

Eye Lubricant

Inactive ingredients:

Borax, Boric Acid, Citric Acid  
anhydrous, Sodium Chloride,  
Sodium Citrate Dihydrate,  
Sodium Hyaluronate, water.

Directions:

Put one or two drops in the  
affected eyes as needed.

Warning

- For external use only.
- If solution changes color or  
becomes cloudy, do not use.

Stop use and ask doctor if

- You feel eye pain.
- Changes in vision occur.
- Redness or irritation of the eye lasts.
- Condition worsens or lasts  
more than 72 hours

Uses

- For use as a lubricant to prevent  
further irritation.
- May be used as a protectant against  
further irritation.
- To relieve dryness of the eye.

**Patient Information Leaflet- Page 1**

**Instructions for use**

**Please read this information carefully**  
**because it will help you to use OPTASE® HYLO RELIEF™ properly**

# OPTASE® HYLO RELIEF™

## What is OPTASE® HYLO RELIEF™?

OPTASE® HYLO RELIEF™ is a sterile, preservative free eye solution for ocular use.

### Composition:

**Active ingredient:** Glycerin (0.25%).

**Inactive ingredients:** Borax, Boric Acid, Citric Acid Anhydrous, Sodium Chloride, Sodium Citrate Dihydrate, Sodium Hyaluronate, Water.

Each bottle contains 10ml of eye drops solution.

## When is OPTASE® HYLO RELIEF™ indicated?

OPTASE® HYLO RELIEF™ is for use as a lubricant to prevent further irritation, and relieve dryness of the eye. It may also be used as a protectant against further irritation associated with dry eye.

## When should OPTASE® HYLO RELIEF™ be used?

The symptoms of burning, itching, dry eyes or foreign-body sensation are often experienced due to dry or air conditioned environments. Environmental factors, side effects of medication, age, cigarette smoke, driving at night or prolonged periods working with visual display units can also be the cause of these symptoms.

OPTASE® HYLO RELIEF™ relieves these symptoms and offers long lasting protection for the eyes.

OPTASE® HYLO RELIEF™ contains Glycerin which is a humectant (moistening effect) that comes from plant sources. Glycerin protects both the surface of the eye against cell damage and assists healing.

OPTASE® HYLO RELIEF™ is a product with no alcohol, no preservatives and no ingredients of animal origin. OPTASE® HYLO RELIEF™ can be used with contact lenses.

## How should OPTASE® HYLO RELIEF™ be used?

The unique OPTASE® HYLO RELIEF™ bottle system is a novel delivery system to the US Market: please take particular care to review the instructions carefully. For video instructions on how to use the OPTASE® HYLO RELIEF™ bottle, please scan the QR code on the side of the box. The design of the

unique bottle system ensures that the size and speed of each drop are the same regardless of the pressure applied to the base of the bottle. Please do not use OPTASE® HYLO RELIEF™ if any part of the protective seal on the folding carton is broken or damaged before using for the first time. **During use, please avoid any contact between the tip of the bottle and your eye or your skin. After application, ensure that the tip is dry. Then replace the over-cap back on the bottle.**

### Priming the system:

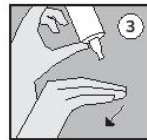


To prime the system, remove the over-cap (**see picture 1**) and invert the OPTASE® HYLO RELIEF™ bottle with its tip pointing down.

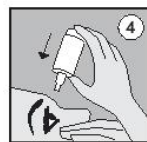


Place two fingers on the base and your thumb on the shoulder of the bottle (**see picture 2**) and press firmly on the base and release. Repeat this several times until the first drop is released. The bottle is now primed.

### General use:



Remove the over-cap and invert the OPTASE® HYLO RELIEF™ bottle with its tip pointing down. Support the hand holding the bottle with the other hand (**see picture 3**).



Hold the bottle as previously shown (**see picture 2**). With your head leaning back slightly, pull down your lower eyelid (**see picture 4**). Press the base of the bottle to enable the pump function, while ensuring that no direct contact is made with the eye. This enables the bottle to release one drop into the conjunctival sac. Release and repeat for the other eye. After each application, slowly close your eye to allow the fluid to spread evenly over the eye surface. **Please avoid any contact between the tip of the bottle and your eye or your skin.**


## What else do you need to know?

- Keep out of reach of children. OPTASE® HYLO RELIEF™ is for external use only. Please wash your hands before use.
- **During use, and to avoid contamination, please avoid any contact between the tip of the bottle and your eye or your skin. Do not touch the tip of the bottle with fingers.**
- After application, ensure that the tip is dry, then replace the over-cap back on the bottle.
- The OPTASE® HYLO RELIEF™ bottle is for single person use only.
- Do not touch the eye or contact lens with the tip of the bottle.
- Please allow at least 10 minutes after the application of other ophthalmic drops before applying OPTASE® HYLO RELIEF™. Eye ointments should always be administered last.

## When should OPTASE® HYLO RELIEF™ not be used?

OPTASE® HYLO RELIEF™ should not be used if you are sensitive to any of the ingredients.

## What do you need to know about storing OPTASE® HYLO RELIEF™?

- OPTASE® HYLO RELIEF™ should not be stored above 25°C/77°F , and protected from direct sunshine and heat.
- OPTASE® HYLO RELIEF™ can be used for 6 months after opening.
- The shelf life is 2 years.
- Do not use after the expiry date shown on the bottle and imprinted on the packaging carton, or after discard date (6 months from opening).
- Do not use OPTASE® HYLO RELIEF™ in the event it has frozen, or it has been stored in hot conditions for a long time.
- Do not use if the bottle is damaged, or the tamper evident seal is damaged.
- Discard the empty bottle appropriately.

## Are there any Contraindications for OPTASE® HYLO RELIEF™?

- Stop use and ask doctor if you feel pain, changes in vision occur, redness or irritation of the eye lasts or if condition worsens or lasts more than 72 hours.
- Do not use if you are sensitive to any of the ingredients. If in doubt, consult a healthcare professional.

## Date of information:

October 2022

## Manufactured for:

**SCOPE**

**Scope Health Inc**  
79 Madison Av, 27 E 28th St.  
New York, NY, 10016

Questions: +1 917 7954227  
[www.optase.com](http://www.optase.com)  
[hello@optase.com](mailto:hello@optase.com)

The OPTASE® brand and Scope logo are trademarks of Scope Ophthalmics Ltd.

HYLO® is a trademark of URSAPHARM Arzneimittel GmbH.

Product of Germany



# OPTASE<sup>®</sup> HYLO<sup>®</sup> RELIEF

Dry Eye Therapy Drops



Name: \_\_\_\_\_

Date of opening: / /

Use within six months from opening the bottle.  
Use by the expiry date, see stamp on the bottle.  
No ingredients of animal origin.



EASY TO USE

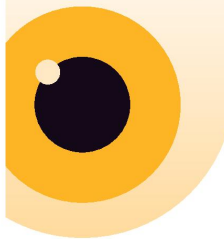
Unique Bottle  
One Click = One Drop



Please see instructions inside for full details of use.

# OPTASE<sup>®</sup> HYLO<sup>®</sup> RELIEF

Dry Eye Therapy Drops



PRESERVATIVE FREE

DRY EYE RELIEF  
Recommended by Experts

Contact Lens Compatible One Click, One Drop

x300 DROPS

0.33 fl oz (10 ml) Sterile



Suffer from dry, sore eyes on waking?

Try OPTASE<sup>®</sup> HYLO NIGHT<sup>™</sup> Dry Eye ointment before bedtime for relief during the night.

For video instructions on how to use the OPTASE<sup>®</sup> HYLO RELIEF<sup>™</sup> bottle scan here



SCOPE

Manufactured for Scope Health Inc.  
79 Madison Av, 27 E 28th St, New York, NY 10016, USA  
Questions: +1 917 795 4227  
www.optase.com  
hello@optase.com

### Drug Facts

**Active Ingredients** 0.25 % glycerin  
**Purpose** Eye lubricant

**Uses**

- For use as a lubricant to prevent further irritation.
- May be used as a protectant against further irritation.
- To relieve dryness of the eye.

**Warning**

- For external use only.
- If solution changes color or becomes cloudy, do not use.

**Stop use and ask doctor if**

- You feel eye pain.
- Changes in vision occur.
- Redness or irritation of the eye lasts.
- Condition worsens or lasts more than 72 hours.

**Keep out of reach of children. If swallowed get medical help or contact a poison control center right away.**

**Directions**

Put one or two drops in the affected eyes as needed.

**Other Information**

- Use only if tamper evidence seal on the lid is intact.
- Do not store above 25 °C/77 °F

**Inactive ingredients**

Borax, Boric Acid, Citric Acid anhydrous, Sodium Chloride, Sodium Citrate Dihydrate, Sodium Hyaluronate, water.



8 60004 00686 2



LOT

## Immediate label



## OPTASE

glycerin solution/ drops

### Product Information

<b>Product Type</b>	HUMAN OTC DRUG	<b>Item Code (Source)</b>	NDC:72972-005
<b>Route of Administration</b>	OPHTHALMIC		

**Active Ingredient/Active Moiety**

Ingredient Name	Basis of Strength	Strength
GLYCERIN (UNII: PDC6A3C00X) (GLYCERIN - UNII:PDC6A3C00X)	GLYCERIN	0.25 mg in 1 mL

**Inactive Ingredients**

Ingredient Name	Strength
SODIUM BORATE (UNII: 91MBZ8H3QO)	
SODIUM CHLORIDE (UNII: 451W47IQ8X)	
BORIC ACID (UNII: R57ZHV85D4)	
ANHYDROUS CITRIC ACID (UNII: XF417D3PSL)	
HYALURONATE SODIUM (UNII: YSE9PPT4TH)	
TRISODIUM CITRATE DIHYDRATE (UNII: B22547B95K)	
WATER (UNII: 059QF0KO0R)	

**Packaging**

#	Item Code	Package Description	Marketing Start Date	Marketing End Date
1	NDC:72972-005-01	1 in 1 BOX	02/10/2023	
1		10 mL in 1 BOTTLE, DISPENSING; Type 0: Not a Combination Product		

**Marketing Information**

Marketing Category	Application Number or Monograph Citation	Marketing Start Date	Marketing End Date
OTC Monograph Drug	M018	02/10/2023	

**Labeler** - Scope Health Inc (116778693)**Registrant** - Regulatory Matters Consulting (080711165)

Revised: 11/2023

Scope Health Inc