

CETRORELIX- cetorelix acetate
Teva Pharmaceuticals, Inc.

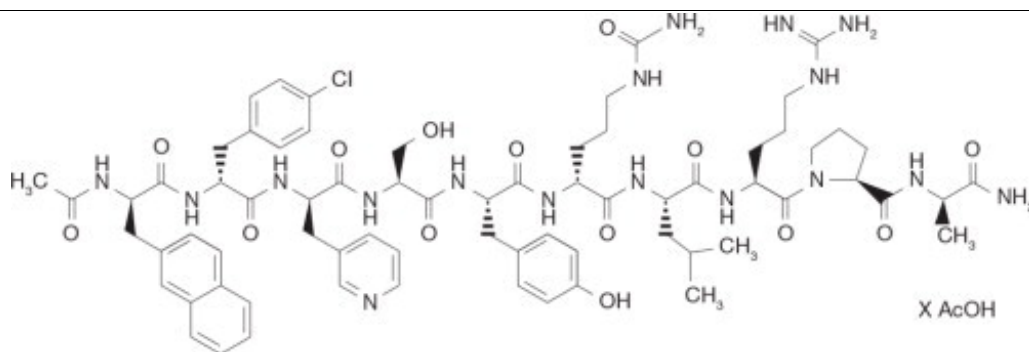
Cetorelix Acetate for Injection 0.25 mg

FOR SUBCUTANEOUS USE ONLY

DESCRIPTION

Cetorelix acetate for injection is a synthetic decapeptide with gonadotropin-releasing hormone (GnRH) antagonistic activity. Cetorelix acetate is an analog of native GnRH with substitutions of amino acids at positions 1, 2, 3, 6, and 10. The molecular formula is Acetyl-D-3-(2'-naphthyl)-alanine-D-4-chlorophenylalanine-D-3-(3'-pyridyl)-alanine-L-serine-L-tyrosine-D-citruline-L-leucine-L-arginine-L-proline-D-alanine-amide, and the molecular weight is 1431.06, calculated as the anhydrous free base. The structural formula is as follows:

Cetorelix acetate



(Ac-D-Nal₁-D-Cpa₂-D-Pal₃-Ser₄-Tyr₅-D-Cit₆-Leu₇-Arg₈-Pro₉-D-Ala₁₀-NH₂)

Cetorelix acetate for injection 0.25 mg is a sterile lyophilized powder intended for subcutaneous injection after reconstitution with Sterile Water for Injection, that comes supplied in a 1.0 mL pre-filled syringe. Each vial of cetorelix acetate for injection 0.25 mg contains 0.26-0.27 mg cetorelix acetate, equivalent to 0.25 mg cetorelix, and 54.80 mg mannitol.

CLINICAL PHARMACOLOGY

GnRH induces the production and release of luteinizing hormone (LH) and follicle stimulating hormone (FSH) from the gonadotrophic cells of the anterior pituitary. Due to a positive estradiol (E2) feedback at midcycle, GnRH liberation is enhanced resulting in an LH-surge. This LH-surge induces the ovulation of the dominant follicle, resumption of oocyte meiosis and subsequently luteinization as indicated by rising progesterone levels.

Cetorelix acetate for injection competes with natural GnRH for binding to membrane receptors on pituitary cells and thus controls the release of LH and FSH in a dose-dependent manner. The onset of LH suppression is approximately one hour with the 3 mg dose and two hours with the 0.25 mg dose. This suppression is maintained by

continuous treatment and there is a more pronounced effect on LH than on FSH. An initial release of endogenous gonadotropins has not been detected with cetrorelix acetate for injection, which is consistent with an antagonist effect.

The effects of cetrorelix acetate for injection on LH and FSH are reversible after discontinuation of treatment. In women, cetrorelix acetate for injection delays the LH-surge, and consequently ovulation, in a dose-dependent fashion. FSH levels are not affected at the doses used during controlled ovarian stimulation. Following a single 3 mg dose of cetrorelix acetate for injection, duration of action of at least 4 days has been established. A dose of cetrorelix acetate for injection 0.25 mg every 24 hours has been shown to maintain the effect.

Pharmacokinetics

The pharmacokinetic parameters of single and multiple doses of cetrorelix acetate for injection in adult healthy female subjects are summarized in Table 1.

Table 1: Pharmacokinetic parameters of Cetrorelix Acetate for Injection following 3 mg single or 0.25 mg single and multiple (daily for 14 days) subcutaneous (sc) administration.

	Single dose 3 mg	Single dose 0.25 mg	Multiple dose 0.25 mg
No. of subjects	12	12	12
t_{\max}^{\dagger} [h]	1.5 (0.5-2)	1.0 (0.5-1.5)	1.0 (0.5-2)
$t_{1/2}^{\dagger}$ [h]	62.8 (38.2-108)	5.0 (2.4-48.8)	20.6 (4.1-179.3)
C_{\max} [ng/ml]	28.5 (22.5-36.2)	4.97 (4.17-5.92)	6.42 (5.18-7.96)
AUC [ng·h/ml]	536 (451-636)	31.4 (23.4-42.0)	44.5 (36.7-54.2)
CL* [ml/min·kg]	1.28 [‡]		
V_z^* [l/kg]	1.16 [‡]		

t_{\max} Time to reach observed maximum plasma concentration

$t_{1/2}$ Elimination half-life

C_{\max} Maximum plasma concentration; multiple dose $C_{SS, \max}$

AUC Area under the curve; single dose $AUC_{0-\infty}$, multiple dose AUC_t

CL Total plasma clearance

V_z Volume of distribution

Geometric mean (95% CI_{In}),

* arithmetic mean,

† median (min-max)

‡ Based on iv administration (n=6, separate study 0013)

Absorption

Cetrorelix acetate for injection is rapidly absorbed following subcutaneous injection, maximal plasma concentrations being achieved approximately one to two hours after administration. The mean absolute bioavailability of cetrorelix acetate for injection

following subcutaneous administration to healthy female subjects is 85%.

Distribution

The volume of distribution of cetrorelix acetate for injection following a single intravenous dose of 3 mg is about 1 l/kg. *In vitro* protein binding to human plasma is 86%.

Cetrorelix acetate for injection concentrations in follicular fluid and plasma were similar on the day of oocyte pick-up in patients undergoing controlled ovarian stimulation. Following subcutaneous administration of cetrorelix acetate for injection, 0.25 mg and 3 mg, plasma concentrations of cetrorelix were below or in the range of the lower limit of quantitation on the day of oocyte pick-up and embryo transfer.

Metabolism

After subcutaneous administration of 10 mg cetrorelix acetate for injection to females and males, cetrorelix acetate for injection and small amounts of (1-9), (1-7), (1-6), and (1-4) peptides were found in bile samples over 24 hours.

In *in vitro* studies, cetrorelix acetate for injection was stable against phase I- and phase II-metabolism. Cetrorelix acetate for injection was transformed by peptidases, and the (1-4) peptide was the predominant metabolite.

Excretion

Following subcutaneous administration of 10 mg cetrorelix to males and females, only unchanged cetrorelix was detected in urine. In 24 hours, cetrorelix and small amounts of the (1-9), (1-7), (1-6), and (1-4) peptides were found in bile samples. 2-4% of the dose was eliminated in the urine as unchanged cetrorelix, while 5-10% was eliminated as cetrorelix and the four metabolites in bile. Therefore, only 7-14% of the total dose was recovered as unchanged cetrorelix and metabolites in urine and bile up to 24 hours. The remaining portion of the dose may not have been recovered since bile and urine were not collected for a longer period of time.

Special Populations

Pharmacokinetic investigations have not been performed either in subjects with impaired renal or liver function, or in the elderly, or in children (see PRECAUTIONS).

Pharmacokinetic differences in different races have not been determined.

There is no evidence of differences in pharmacokinetic parameters for cetrorelix acetate for injection between healthy subjects and patients undergoing controlled ovarian stimulation.

Drug-Drug Interactions

No formal drug-drug interaction studies have been performed with cetrorelix acetate for injection (see PRECAUTIONS).

Clinical Studies

Seven hundred thirty-two (732) patients were treated with cetrorelix acetate for injection in five (two Phase 2 dose-finding and three Phase 3) clinical trials. The clinical trial

population consisted of Caucasians (95.5%) and Black, Asian, Arabian and others (4.5%). Women were between 19 and 40 years of age (mean: 32). The studies excluded subjects with polycystic ovary syndrome (PCOS), subjects with low or no ovarian reserve, and subjects with stage III-IV endometriosis.

Two dose regimens were investigated in these clinical trials, either a single dose per treatment cycle or multiple dosing. In the Phase 2 studies, a single dose of 3 mg was established as the minimal effective dose for the inhibition of premature LH surges with a protection period of at least 4 days. When cetorelix acetate for injection is administered in a multidose regimen, 0.25 mg was established as the minimal effective dose. The extent and duration of LH-suppression is dose dependent.

In the Phase 3 program, efficacy of the single 3 mg dose regimen of cetorelix acetate for injection and the multiple 0.25 mg dose regimen of cetorelix acetate for injection was established separately in two adequate and well controlled clinical studies utilizing active comparators. A third non-comparative clinical study evaluated only the multiple 0.25 mg dose regimen of cetorelix acetate for injection. The ovarian stimulation treatment with recombinant FSH or human menopausal gonadotropin (hMG) was initiated on day 2 or 3 of a normal menstrual cycle. The dose of gonadotropins was administered according to the individual patient's disposition and response.

In the single dose regimen study, cetorelix acetate for injection 3 mg was administered on the day of controlled ovarian stimulation when adequate estradiol levels (400 pg/mL) were obtained, usually on day 7 (range day 5-12). If hCG was not given within 4 days of the 3 mg dose of cetorelix acetate for injection, then 0.25 mg of cetorelix acetate for injection was administered daily beginning 96 hours after the 3 mg injection until and including the day of hCG administration.

In the two multiple dose regimen studies, cetorelix acetate for injection 0.25 mg was started on day 5 or 6 of COS. Both gonadotropins and cetorelix acetate for injection were continued daily (multiple dose regimen) until the injection of human chorionic gonadotropin (hCG).

Oocyte pick-up (OPU) followed by *in vitro* fertilization (IVF) or intracytoplasmic sperm injection (ICSI) as well as embryo transfer (ET) were subsequently performed. The results for cetorelix acetate for injection are summarized below in Table 2.

Table 2: Results of Phase 3 Clinical Studies with Cetorelix Acetate for Injection 3 mg in a single dose (sd) regimen and 0.25 mg in a multiple dose (md) regimen

Parameter	Cetorelix Acetate for Injection 3 mg (sd, active comparator study)	Cetorelix Acetate for Injection 0.25 mg (md, active comparator study)	Cetorelix Acetate for Injection 0.25 mg (md, non-comparative study)
No. of subjects	115	159	303
hCG administered [%]	98.3	96.2	96.0
Oocyte pick-up [%]	98.3	94.3	93.1
LH-surge [%] (LH \geq 10 U/L and P* \geq 1 ng/mL) †	0.0	1.9	1.0

Serum E ₂ [pg/ml] at day hCG [‡] , §	1125 (470-2952)	1064 (341-2531)	1185 (311-3676)
Serum LH [U/L] at day hCG [‡] , §	1.0 (0.5-2.5)	1.5 (0.5-7.6)	1.1 (0.5-3.5)
No. of follicles ≥ 11 mm at day hCG [¶]	11.2±5.5	10.8±5.2	10.4±4.5
No. of oocytes: IVF [¶] ICSI [¶]	9.2±5.2 10.0±4.2	7.6±4.3 10.1±5.6	8.5±5.1 9.3±5.9
Fertilization rate: IVF [¶] ICSI [¶]	0.48±0.33 0.66±0.29	0.62±0.26 0.63±0.29	0.60±0.26 0.61±0.25
No. of embryos transferred [¶]	2.6±0.9	2.1±0.6	2.7±1.0
Clinical pregnancy rate [%] per attempt per subject with ET	 22.6 26.3	 20.8 24.1	 19.8 23.3

* Progesterone

† Following initiation of cetorelix acetate for injection therapy

‡ Morning values

§ Median with 5th – 95th percentiles

¶ Mean ± standard deviation

In addition to IVF and ICSI, one pregnancy was obtained after intrauterine insemination. In the five Phase 2 and Phase 3 clinical trials, 184 pregnancies have been reported out of a total of 732 patients (including 21 pregnancies following the replacement of frozen-thawed embryos).

In the 3 mg regimen, 9 patients received an additional dose of 0.25 mg of cetorelix acetate for injection and two other patients received two additional doses of 0.25 mg cetorelix acetate for injection. The median number of days of cetorelix acetate for injection multiple dose treatment was 5 (range 1-15) in both studies.

No drug related allergic reactions were reported from these clinical studies.

INDICATIONS AND USAGE

Cetorelix acetate for injection is indicated for the inhibition of premature LH surges in women undergoing controlled ovarian stimulation.

CONTRAINDICATIONS

Cetorelix acetate for injection is contraindicated under the following conditions:

1. Hypersensitivity to cetorelix acetate, extrinsic peptide hormones or mannitol.
2. Known hypersensitivity to GnRH or any other GnRH analogs.
3. Known or suspected pregnancy, and lactation (see PRECAUTIONS).
4. Severe renal impairment

WARNINGS

Cetrorelix acetate for injection should be prescribed by physicians who are experienced in fertility treatment. Before starting treatment with cetrorelix acetate for injection, pregnancy must be excluded (see CONTRAINDICATIONS and PRECAUTIONS).

PRECAUTIONS

General

Cases of hypersensitivity reactions, including anaphylactoid reactions with the first dose, have been reported during postmarketing surveillance (see ADVERSE REACTIONS). A severe anaphylactic reaction associated with cough, rash, and hypotension, was observed in one patient after seven months of treatment with cetrorelix acetate for injection (10 mg/day) in a study for an indication unrelated to infertility.

Special care should be taken in women with signs and symptoms of active allergic conditions or known history of allergic predisposition. Treatment with cetrorelix acetate for injection is not advised in women with severe allergic conditions.

Information for Patients

Prior to therapy with cetrorelix acetate for injection, patients should be informed of the duration of treatment and monitoring procedures that will be required. The risk of possible adverse reactions should be discussed (see ADVERSE REACTIONS). Cetrorelix acetate for injection should not be prescribed if a patient is pregnant.

If cetrorelix acetate for injection is prescribed to patients for self-administration, information for proper use is given in the Patient Leaflet (see below).

Laboratory Tests

After the exclusion of preexisting conditions, enzyme elevations (ALT, AST, GGT, alkaline phosphatase) were found in 1-2% of patients receiving cetrorelix acetate for injection during controlled ovarian stimulation. The elevations ranged up to three times the upper limit of normal. The clinical significance of these findings was not determined.

During stimulation with human menopausal gonadotropin, cetrorelix acetate for injection had no notable effects on hormone levels aside from inhibition of LH surges.

Drug Interactions

No formal drug interaction studies have been performed with cetrorelix acetate for injection.

Carcinogenesis, Mutagenesis, Impairment of Fertility

Long-term carcinogenicity studies in animals have not been performed with cetrorelix acetate. Cetrorelix acetate was not genotoxic *in vitro* (Ames test, HPRT test, chromosome aberration test) or *in vivo* (chromosome aberration test, mouse micronucleus test). Cetrorelix acetate induced polyploidy in CHL-Chinese hamster lung fibroblasts, but not in V79-Chinese hamster lung fibroblasts, cultured peripheral human lymphocytes or in an *in vitro* micronucleus test in the CHL-cell line. Treatment with 0.46

mg/kg cetrorelix acetate for 4-weeks resulted in complete infertility in female rats which was reversed 8 weeks after cessation of treatment.

Pregnancy

(see CONTRAINDICATIONS)

Cetrorelix acetate for injection is contraindicated in pregnant women.

When administered to rats for the first seven days of pregnancy, cetrorelix acetate did not affect the development of the implanted conceptus at doses up to 38 mcg/kg (approximately 1 time the recommended human therapeutic dose based on body surface area). However, a dose of 139 mcg/kg (approximately 4 times the human dose) resulted in a resorption rate and a post implantation loss of 100%. When administered from day 6 to near term to pregnant rats and rabbits, very early resorptions and total implantation losses were seen in rats at doses from 4.6 mcg/kg (0.2 times the human dose) and in rabbits at doses from 6.8 mcg/kg (0.4 times the human dose). In animals that maintained their pregnancy, there was no increase in the incidence of fetal abnormalities.

The fetal resorption observed in animals is a logical consequence of the alteration in hormonal levels effected by the antigonadotrophic properties of cetrorelix acetate for injection, which could result in fetal loss in humans as well. Therefore, this drug should not be used in pregnant women.

Nursing Mothers

It is not known whether cetrorelix acetate for injection is excreted in human milk. Because many drugs are excreted in human milk, and because the effects of cetrorelix acetate for injection on lactation and/or the breast-fed child have not been determined, cetrorelix acetate for injection should not be used by nursing mothers.

Geriatric Use

Cetrorelix acetate for injection is not intended to be used in subjects aged 65 and over.

ADVERSE REACTIONS

The safety of cetrorelix acetate for injection in 949 patients undergoing controlled ovarian stimulation in clinical studies was evaluated. Women were between 19 and 40 years of age (mean: 32). 94.0% of them were Caucasian. Cetrorelix acetate for injection was given in doses ranging from 0.1 mg to 5 mg as either a single or multiple dose.

Table 3 shows systemic adverse events, reported in clinical studies without regard to causality, from the beginning of cetrorelix acetate for injection treatment until confirmation of pregnancy by ultrasound at an incidence $\geq 1\%$ in cetrorelix acetate for injection treated subjects undergoing COS.

Table 3: Adverse Events in $\geq 1\%$

(WHO preferred term)	Cetrorelix Acetate for Injection N=949
-----------------------------	---

	% (n)
Ovarian Hyperstimulation Syndrome*	3.5 (33)
Nausea	1.3 (12)
Headache	1.1 (10)

* Intensity moderate or severe, or WHO Grade II or III, respectively

Local site reactions (e.g. redness, erythema, bruising, itching, swelling, and pruritus) were reported. Usually, they were of a transient nature, mild intensity and short duration. During postmarketing surveillance, cases of mild to moderate Ovarian Hyperstimulation syndrome and cases of hypersensitivity reactions including anaphylactoid reactions have been reported.

Two stillbirths were reported in Phase 3 studies of cetrorelix acetate for injection.

Congenital Anomalies

Clinical follow-up studies of 316 newborns of women administered cetrorelix acetate for injection were reviewed. One infant of a set of twin neonates was found to have anencephaly at birth and died after four days. The other twin was normal. Developmental findings from ongoing baby follow-up included a child with a ventricular septal defect and another child with bilateral congenital glaucoma.

Four pregnancies that resulted in therapeutic abortion in Phase 2 and Phase 3 controlled ovarian stimulation studies had major anomalies (diaphragmatic hernia, trisomy 21, Klinefelter syndrome, polymalformation, and trisomy 18). In three of these four cases, intracytoplasmic sperm injection (ICSI) was the fertilization method employed; in the fourth case, *in vitro* fertilization (IVF) was the method employed.

The minor congenital anomalies reported include: supernumerary nipple, bilateral strabismus, imperforate hymen, congenital nevi, hemangiomas, and QT syndrome.

The causal relationship between the reported anomalies and cetrorelix acetate for injection is unknown. Multiple factors, genetic and others (including, but not limited to ICSI, IVF, gonadotropins, and progesterone) make causal attribution difficult to study.

To report SUSPECTED ADVERSE REACTIONS contact Teva at 1-888-838-2872 or FDA at 1-800-FDA-1088 or www.fda.gov/medwatch.

OVERDOSAGE

There have been no reports of overdosage with cetrorelix acetate for injection 0.25 mg or 3 mg in humans. Single doses up to 120 mg cetrorelix acetate for injection have been well tolerated in patients treated for other indications without signs of overdosage.

DOSAGE AND ADMINISTRATION

Ovarian stimulation therapy with gonadotropins (FSH, hMG) is started on cycle Day 2 or 3. The dose of gonadotropins should be adjusted according to individual response. Cetrorelix acetate for injection 0.25 mg may be administered subcutaneously once daily during the early- to mid-follicular phase.

Cetrorelix acetate for injection 0.25 mg is administered on either stimulation day 5

(morning or evening) or day 6 (morning) and continued daily until the day of hCG administration.

When assessment by ultrasound shows a sufficient number of follicles of adequate size, hCG is administered to induce ovulation and final maturation of the oocytes. No hCG should be administered if the ovaries show an excessive response to the treatment with gonadotropins to reduce the chance of developing ovarian hyperstimulation syndrome (OHSS).

Administration

Cetrorelix acetate for injection 0.25 mg can be administered by the patient herself after appropriate instructions by her doctor.

Directions for using Cetrorelix Acetate for Injection 0.25 mg with the enclosed needles and pre-filled syringe:

1. Wash hands thoroughly with soap and water.
2. Flip off the plastic cover of the vial and wipe the aluminum ring and the rubber stopper with an alcohol swab.
3. Twist the injection needle with the yellow mark (20 gauge) on the pre-filled syringe.
4. Push the needle through the center of the rubber stopper of the vial and slowly inject the solvent into the vial.
5. Leaving the syringe in the vial, gently swirl the vial until the solution is clear and without residues. Avoid forming bubbles.
6. Draw the total contents of the vial into the syringe. If necessary, invert the vial and pull back the needle as far as needed to withdraw the entire contents of the vial.
7. Replace the needle with the yellow mark by the injection needle with the grey mark (27 gauge).
8. Invert the syringe and push the plunger until all air bubbles have been expelled.
9. Choose an injection site in the lower abdominal area, preferably around, but staying at least one inch away from the navel. Choose a different injection site each day to minimize local irritation. Use a second alcohol swab to clean the skin at the injection site and allow alcohol to dry. Gently pinch up the skin surrounding the site of injection.
10. Inject the prescribed dose as directed by your doctor, nurse or pharmacist.
11. Use the syringe and needles only once. Dispose of the syringe and needles properly after use. If available, use a medical waste container for disposal.

HOW SUPPLIED

Cetrorelix Acetate for Injection 0.25 mg is available in a carton of one packaged tray (NDC 0480-5795-08).

Each packaged tray contains: one glass vial containing 0.26 – 0.27 mg cetrorelix acetate (corresponding to 0.25 mg cetrorelix), one pre-filled glass syringe with 1 mL of Sterile Water for Injection, USP, one 20 gauge needle (yellow) and one 27 gauge needle (grey).

Storage

Store Cetrorelix Acetate for Injection 0.25 mg refrigerated, 2-8°C (36-46°F). Store the packaged tray in the outer carton in order to protect from light.

Rx only

Manufactured In Spain By:

GP Pharm, S.A.

Barcelona, Spain (ESP) – 08777

Manufactured For:

Teva Pharmaceuticals

Parsippany, NJ 07054

Rev. C 6/2024

Patient Leaflet

Cetrorelix Acetate for Injection, 0.25 mg

Active ingredient: cetrorelix acetate

Summary

Cetrorelix acetate for injection blocks the effects of a natural hormone, called gonadotropin-releasing hormone (GnRH). GnRH controls the secretion of another hormone, called luteinizing hormone (LH), which induces ovulation during the menstrual cycle. During hormone treatment for ovarian stimulation, premature ovulation may lead to eggs that are not suitable for fertilization. Cetrorelix acetate for injection blocks such undesirable premature ovulation.

Uses

Cetrorelix acetate for injection is used to prevent premature ovulation during controlled ovarian stimulation.

General Cautions

Do not use Cetrorelix Acetate for Injection if you

- have kidney disease
- are allergic to cetrorelix acetate, mannitol or exogenous peptide hormones (medicines similar to cetrorelix acetate for injection) or
- are pregnant, or think that you might be pregnant, or if you are breast-feeding.

Consult your doctor before taking cetrorelix acetate for injection if you have had severe allergic reactions.

Proper Use

Ovarian stimulation therapy is started on cycle Day 2 or 3. Cetrorelix acetate for injection 0.25 mg is injected under the skin once daily, as directed by your physician. When an ultrasound examination shows that you are ready, another drug (hCG) is injected to induce ovulation.

How should you use Cetrorelix Acetate for Injection?

You may self-inject cetrorelix acetate for injection after special instruction from your doctor.

To fully benefit from cetrorelix acetate for injection, please read carefully and follow the instructions given below, unless your doctor advises you otherwise.

Cetorelix acetate for injection is for injection under the skin of the lower abdominal area, preferably around, but staying at least one inch away from the belly button. Choose a different injection site each day to minimize local irritation.

Dissolve cetorelix acetate for injection powder only with the water contained in the pre-filled syringe.

Do not use a cetorelix acetate for injection solution if it contains particles or if it is not clear.

Before you inject cetorelix acetate for injection yourself, please read the following instructions carefully:

Directions for using Cetorelix Acetate for Injection 0.25 mg with the enclosed needles and pre-filled syringe:

1. Wash your hands thoroughly with soap and water.



2. On a clean flat surface, lay out everything you need (one vial of powder, one pre-filled syringe, one injection needle with a yellow mark, and one injection needle with a grey mark).



3. Flip off the plastic cover of the vial. Wipe the aluminum ring and the rubber stopper with an alcohol swab.



4. Take the injection needle with the yellow mark and remove the wrapping. Take the pre-filled syringe and remove the cover. Twist the needle on the syringe and remove the cover of the needle.



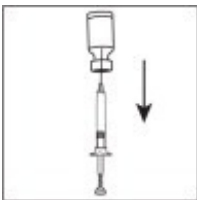
5. Push the needle through the center of the rubber stopper of the vial. Inject the water into the vial by slowly pushing down on the plunger of the syringe.



6. Leave the syringe in the vial. While carefully holding the syringe and vial, swirl gently to mix the powder and water together. When it is mixed, it will look clear and have no particles in it. Do not shake or you will create bubbles in your medicine.



7. Draw the total contents of the vial into the syringe. If liquid is left in the vial, invert the vial, pull back the needle until the opening of the needle is just inside the stopper. If you look from the side through the gap in the stopper, you can control the movement of the needle and the liquid. It is important to withdraw the entire contents of the vial.



8. Detach the syringe from the needle and lay down the syringe. Take the injection needle with the grey mark and remove its wrapping. Twist the needle on the syringe and remove the cover of the needle.



9. Invert the syringe and push the plunger until all air bubbles have been pushed out. Do not touch the needle or allow the needle to touch any surface.



10. Choose an injection site in the lower abdominal area, preferably around, but at least one inch away from the belly button. Choose a different injection site each day to minimize local irritation. Take a second alcohol swab and clean the skin at the injection site and allow alcohol to dry. Inject the prescribed dose as directed by your doctor, nurse or pharmacist.



11. Use the syringe and needles only once. Dispose of the syringe and needles immediately after use (put the covers on the needles to avoid injury). A medical waste container should be used for disposal.



SPECIAL ADVICE

What do you do if you have used too much cetorelix acetate for injection?

Contact your doctor in case of overdose immediately to check whether an adjustment of the further ovarian stimulation procedure is required.

Possible Side Effects

Mild and short lasting reactions may occur at the injection site like reddening, itching, and swelling. Nausea and headache have also been reported.

Call your doctor if you have any side effect not mentioned in this leaflet or if you are unsure about the effect of this medicine.

Storage

How is Cetorelix Acetate for Injection to be stored?

Store Cetorelix Acetate for Injection in a cool dry place protected from excess moisture and heat.

Store Cetorelix Acetate for Injection 0.25 mg in the refrigerator at 2-8°C (36-46°F). Keep the packaged tray in the outer carton in order to protect it from light.

How long may Cetorelix Acetate for Injection be stored?

Do not use the Cetorelix Acetate for Injection powder or the pre-filled syringe after the expiration date, which is printed on the labels and on the carton, and dispose of the vial and the syringe properly.

How long can you keep Cetorelix Acetate for Injection after preparation of the solution?

The solution should be used immediately after preparation.

Store the medicine out of the reach of children.

If you suspect that you may have taken more than the prescribed dose of this medicine, contact your doctor immediately. This medicine was prescribed for your particular condition. Do not use it for another condition or give the drug to others.

This leaflet provides a summary of the information about cetorelix acetate for injection. Medicines are sometimes prescribed for uses other than those listed in the Leaflet. If you have any questions or concerns, or want more information about cetorelix acetate for injection, contact your doctor or pharmacist.

This Leaflet has been approved by the U.S. Food and Drug Administration.

Manufactured In Spain By:

GP Pharm, S.A.

Barcelona, Spain (ESP) - 08777

Manufactured For:

Teva Pharmaceuticals

Parsippany, NJ 07054

Rev. B 3/2024

NDC 0480-5795-08

Cetorelix Acetate for Injection

0.25 mg

Sterile - for subcutaneous use only

Store refrigerated, 2-8°C (36-46°F).

One carton contains one packaged tray which contains:

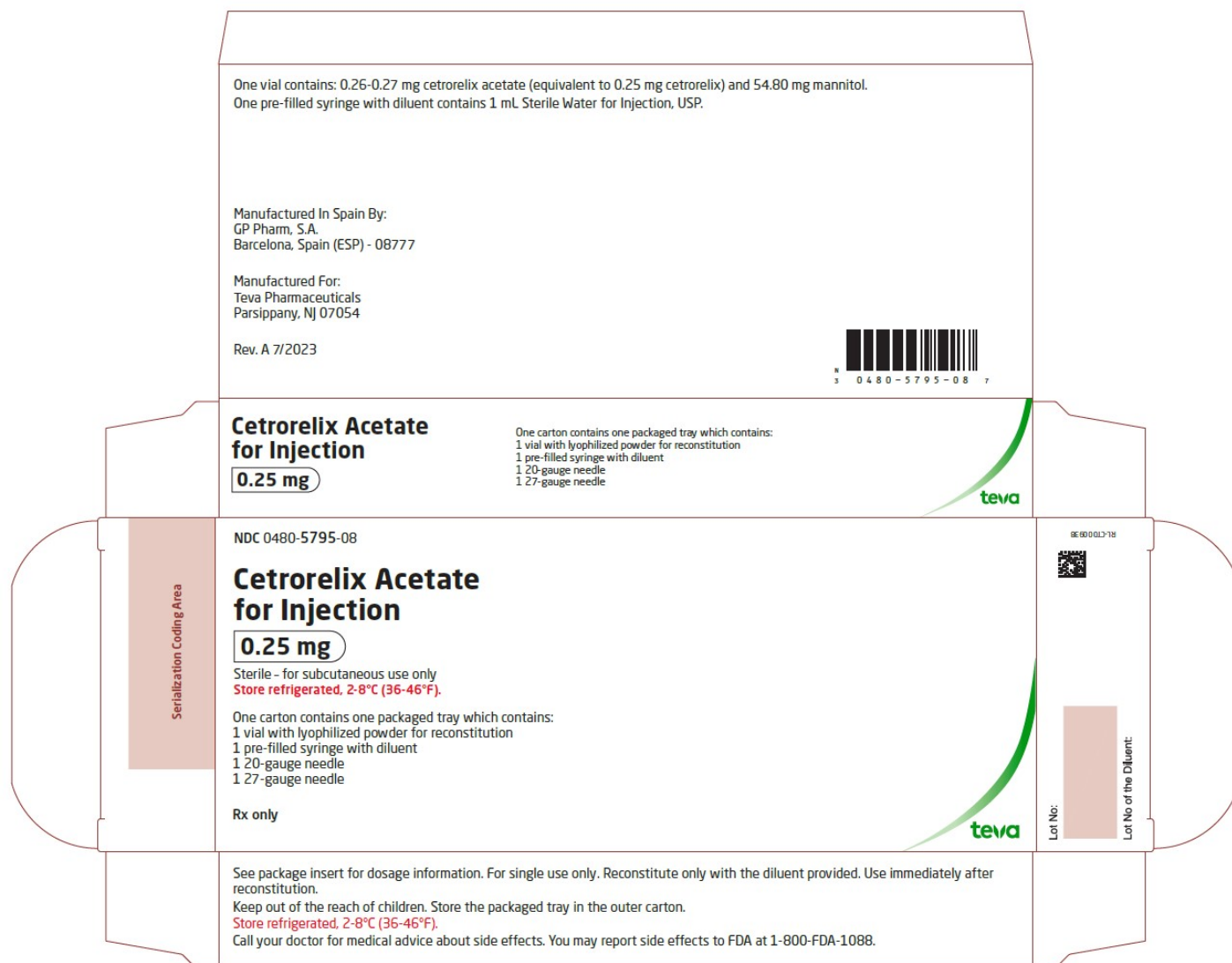
1 vial with lyophilized powder for reconstitution

1 pre-filled syringe with diluent

1 20-gauge needle

1 27-gauge needle

Rx only



NDC 0480-5795-08

Rx only

Cetorelix Acetate for Injection

0.25 mg

STERILE – FOR SUBCUTANEOUS USE ONLY

Contains:

one vial with lyophilized powder for reconstitution, one pre-filled syringe with diluent, one

20-gauge needle and one 27-gauge needle.

Store the packaged tray in the outer carton.

Store refrigerated, 2-8°C (36-46°F).

Manufactured In Spain By: GP Pharm, S.A., Barcelona, Spain (ESP) - 08777

Manufactured For: Teva Pharmaceuticals, Parsippany, NJ 07054

Rev. A 7/2023

NDC 0480-5795-08 Rx only

Cetorelix Acetate for Injection

0.25 mg


STERILE - FOR SUBCUTANEOUS USE ONLY

Contains:
one vial with lyophilized powder for reconstitution, one pre-filled syringe with diluent,
one 20-gauge needle and one 27-gauge needle.


Store the packaged tray in the outer carton.
Store refrigerated, 2-8°C (36-46°F).

Manufactured In Spain By: GP Pharm, S.A., Barcelona, Spain (ESP) - 08777
Manufactured For: Teva Pharmaceuticals, Parsippany, NJ 07054
Rev. A 7/2023


LOT: [REDACTED]
EXP: [REDACTED]



RL-CA000141



N 3 0480-5795-08 7



Open this side →

NDC 0480-3583-01

Rx only

Cetorelix Acetate for Injection, 0.25 mg

STERILE - FOR SUBCUTANEOUS USE ONLY

Store vial protected from light.

Store refrigerated, 2-8°C (36-46°F).

Manufactured In Spain For:

Teva Pharmaceuticals, Parsippany, NJ 07054

ET-CETR601-US-04

Rev. A 7/2023

(01)00304803583013

Cetorelix Acetate NDC 0480-3583-01
for Injection, 0.25 mg Rx only

STERILE - FOR SUBCUTANEOUS USE ONLY.
Store vial protected from light.
Store refrigerated, 2-8°C (36-46°F).

Manufactured In Spain For:
Teva Pharmaceuticals, Parsippany, NJ 07054

ET-CETR601-US-04
Rev. A 7/2023

LOT / EXP

NDC 0480-3584-21

Rx only

1 mL Prefilled Sterile Water for Injection, USP

Mfd. In The Netherlands For:
Teva Pharmaceuticals, Parsippany, NJ 07054

Rev. B 3/2024

NDC 0480-3584-21 Rx only
1 mL Prefilled Sterile
Water for Injection, USP

Mfd. In The Netherlands For:
Teva Pharmaceuticals, Parsippany, NJ 07054
Rev. B 3/2024


(01)00304803584218

1138323


LOT:

EXP:

CETRORELIX

cetorelix acetate kit

Product Information

Product Type	HUMAN PRESCRIPTION DRUG	Item Code (Source)	NDC:0480-5795
---------------------	-------------------------	---------------------------	---------------

Packaging

#	Item Code	Package Description	Marketing Start Date	Marketing End Date
1	NDC:0480-5795-08	1 in 1 CARTON	12/14/2023	
1		1 in 1 TRAY; Type 1: Convenience Kit of Co-Package		

Quantity of Parts

Part #	Package Quantity	Total Product Quantity
Part 1	1 VIAL, SINGLE-DOSE	1 mL
Part 2	1 SYRINGE	1 mL

Part 1 of 2

CETRORELIX

cetorelix acetate injection, powder, for solution

Product Information

Item Code (Source)	NDC:0480-3583
Route of Administration	SUBCUTANEOUS

Active Ingredient/Active Moiety

Ingredient Name	Basis of Strength	Strength
Cetorelix Acetate (UNII: W9Y8L7GP4C) (Cetorelix - UNII:OON1HFZ4BA)	Cetorelix	0.25 mg in 1 mL

Inactive Ingredients

Ingredient Name	Strength
Mannitol (UNII: 3OWL53L36A)	54.80 mg in 1 mL

Packaging

#	Item Code	Package Description	Marketing Start Date	Marketing End Date
1	NDC:0480-3583-01	1 mL in 1 VIAL, SINGLE-DOSE; Type 2: Prefilled Drug Delivery Device/System (syringe, patch, etc.)		

Marketing Information

Marketing Category	Application Number or Monograph Citation	Marketing Start Date	Marketing End Date
ANDA	ANDA215737	12/14/2023	

Part 2 of 2

STERILE WATER

water injection, solution

Product Information

Item Code (Source)	NDC:0480-3584
Route of Administration	SUBCUTANEOUS

Inactive Ingredients

Ingredient Name	Strength
Water (UNII: 059QF0KO0R)	1 mL in 1 mL

Packaging

#	Item Code	Package Description	Marketing Start Date	Marketing End Date
1	NDC:0480-3584-21	1 mL in 1 SYRINGE; Type 2: Prefilled Drug Delivery Device/System (syringe, patch, etc.)		

Marketing Information

Marketing Category	Application Number or Monograph Citation	Marketing Start Date	Marketing End Date
ANDA	ANDA215737	12/14/2023	

Marketing Information

Marketing Category	Application Number or Monograph Citation	Marketing Start Date	Marketing End Date
ANDA	ANDA215737	12/14/2023	

Labeler - Teva Pharmaceuticals, Inc. (022629579)

Revised: 6/2024

Teva Pharmaceuticals, Inc.