

SITAGLIPTIN - METFORMIN- sitagliptin - metformin tablet
Truemed Group LLC

SITAGLIPTIN - METFORMIN

History of a serious hypersensitivity reaction to sitagliptin, such as anaphylaxis or angioedema. [See Warnings and Precautions (5.4); Adverse Reactions (6.2).]



SITAGLIPTIN/METFORMIN 50/850MG

SITAGLIPTIN - METFORMIN

sitagliptin - metformin tablet

Product Information

Product Type	HUMAN PRESCRIPTION DRUG	Item Code (Source)	NDC:82922-100
Route of Administration	ORAL		

Active Ingredient/Active Moiety

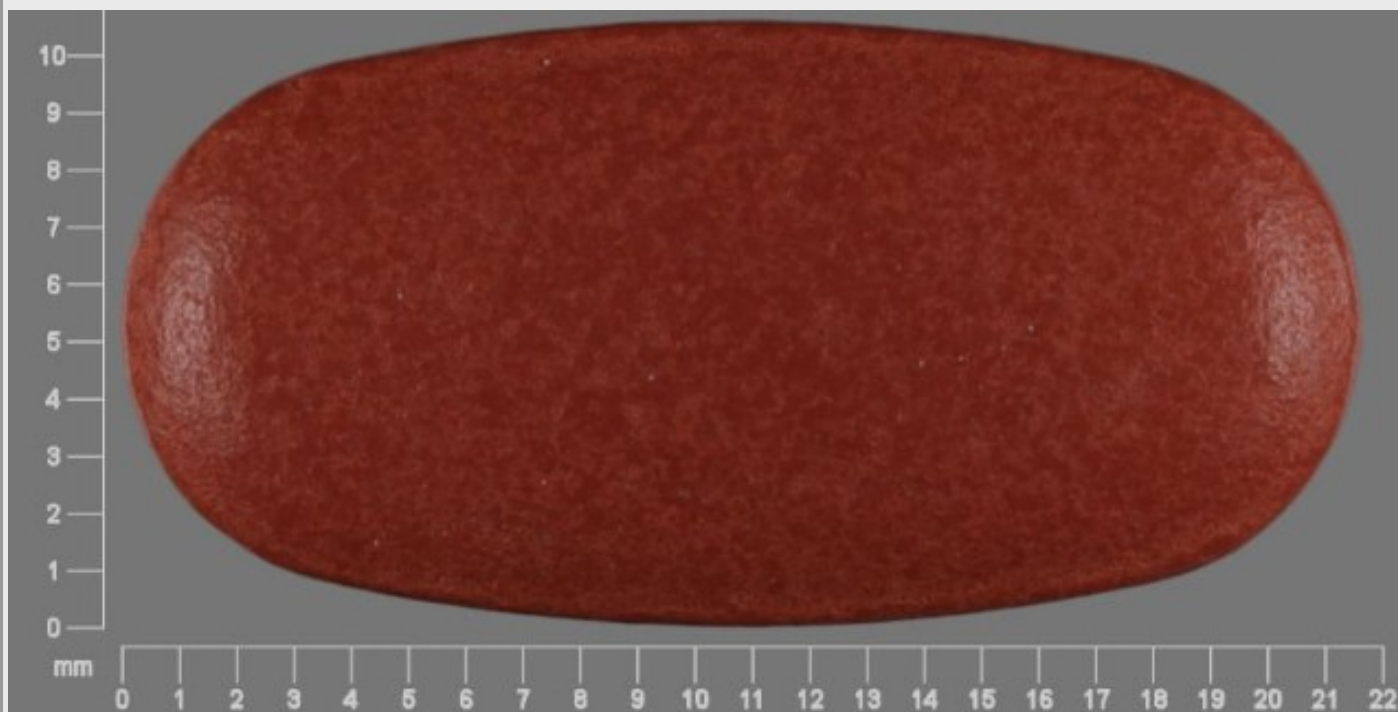
Ingredient Name	Basis of Strength	Strength
METFORMIN (UNII: 9100L32L2N) (METFORMIN - UNII:9100L32L2N)	METFORMIN	850 mg
SITAGLIPTIN (UNII: QFP0P1DV7Z) (SITAGLIPTIN - UNII:QFP0P1DV7Z)	SITAGLIPTIN	50 mg

Product Characteristics

Color	red	Score	no score
Shape	BULLET	Size	10mm
Flavor		Imprint Code	50850
Contains			

Packaging

#	Item Code	Package Description	Marketing Start Date	Marketing End Date
1	NDC:82922-100-01	28 in 1 BOTTLE, PLASTIC; Type 0: Not a Combination Product	04/14/2023	



Marketing Information

Marketing Category	Application Number or Monograph Citation	Marketing Start Date	Marketing End Date
Export only		04/14/2023	

Labeler - Truemed Group LLC (004154534)

Establishment

Name	Address	ID/FEI	Business Operations
Truemed Group LLC		004154534	pack(82922-100) , label(82922-100)