

**SHOPRITE ADULT TUSSIN- dextromethorphan hbr, guaifenesin solution**  
**Wakefern Food Corporation**

*Disclaimer: Most OTC drugs are not reviewed and approved by FDA, however they may be marketed if they comply with applicable regulations and policies. FDA has not evaluated whether this product complies.*

-----

**ShopRite Adult Tussin Drug Facts**

**Active ingredients (in each 10 mL)**

Dextromethorphan HBr, USP 20 mg

Guaifenesin, USP 200 mg

**Purposes**

Cough suppressant

Expectorant

**Uses**

- temporarily relieves cough due to minor throat and bronchial irritation as may occur with a cold
- helps loosen phlegm (mucus) and thin bronchial secretions to drain bronchial tubes

**Warnings**

**Do not use**

if you are now taking a prescription monoamine oxidase inhibitor (MAOI) (certain drugs for depression, psychiatric, or emotional conditions, or Parkinson's disease), or for 2 weeks after stopping the MAOI drug. If you do not know if your prescription drug contains an MAOI, ask a doctor or pharmacist before taking this product.

**Ask a doctor before use if you have**

- cough that occurs with too much phlegm (mucus)
- cough that lasts or is chronic such as occurs with smoking, asthma, chronic bronchitis or emphysema

**Stop use and ask a doctor if**

cough lasts for more than 7 days, comes back, or is accompanied by fever, rash, or persistent headache. A persistent cough may be a sign of a serious condition.

**If pregnant or breast-feeding,**

ask a health professional before use.

**Keep out of reach of children.**

In case of overdose, get medical help or contact a Poison Control Center right away (1-800-222-1222).

**Directions**

- do not take more than 6 doses in any 24-hour period
- measure only with dosing cup provided
- keep dosing cup with product
- mL = milliliter
- this adult product is not intended for use in children under 12 years of age

age	dose
adults and children 12 years and over	10 mL every 4 hours
children under 12 years	do not use

### Other information

- **each 10 mL contains:** sodium 6 mg
- store at 20-25°C (68-77°F).  
Do not refrigerate.

### Inactive ingredients

anhydrous citric acid, FD&C red no. 40, flavor, glycerin, high fructose corn syrup, menthol, propylene glycol, purified water, sodium benzoate, sodium citrate, sucralose

### Questions or comments?

1-800-SHOPRITE

### Principal Display Panel

Compare to: Active Ingredients in Robitussin<sup>®</sup> Cough + Chest Congestion DM

PEAK COLD

FOR AGES 12 & OVER

ADULT

TUSSIN

COUGH SUPPRESSANT (Dextromethorphan HBr)

EXPECTORANT (Guaifenesin)

COUGH + CHEST CONGESTION DM

Relieves: Cough and Mucus

Non-Drowsy

Cherry flavor

8 FL OZ (237 mL)



Compare to: Active Ingredients in Robitussin®  
Cough + Chest Congestion DM\*

Compare to: Active Ingredients in Robitussin®  
Cough + Chest Congestion DM\*



PEAK COLD



PEAK COLD

ShopRite®

FOR AGES 12  
& OVER

ShopRite®

FOR AGES 12  
& OVER

# ADULT TUSSIN

COUGH SUPPRESSANT  
(Dextromethorphan HBr)  
EXPECTORANT (Guaifenesin)

# ADULT TUSSIN

COUGH SUPPRESSANT  
(Dextromethorphan HBr)  
EXPECTORANT (Guaifenesin)

COUGH + CHEST  
CONGESTION DM

COUGH + CHEST  
CONGESTION DM

Relieves: Cough and Mucus

Relieves: Cough and Mucus

Non-Drowsy

Non-Drowsy



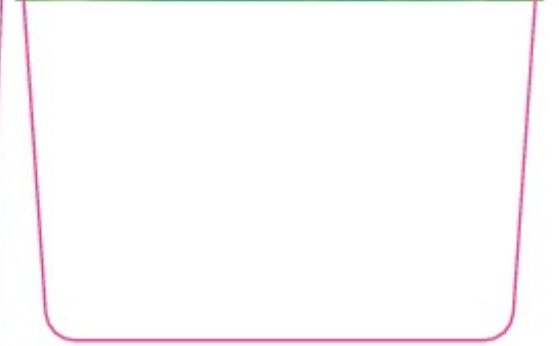
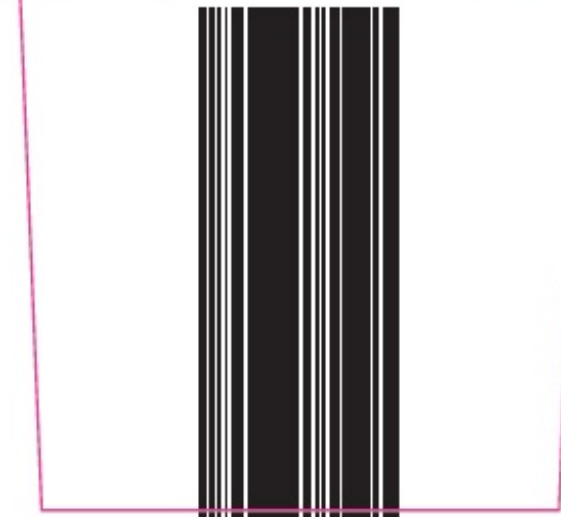
Cherry  
flavor



Cherry  
flavor

8 FL OZ (237 mL)

8 FL OZ (237 mL)



CONGESTION DM  
COUGH + CHEST  
EXPECTORANT (Guaifenesin)  
(Dextromethorphan Hbr)  
COUGH SUPPRESSANT  
**TUSSIN**  
ADULT

FOR AGES 12 & OVER

ShopRite®



### Drug Facts

**Active ingredients**      **Purposes**  
(in each 10 mL)

Dextromethorphan HBr,  
USP 20 mg.....Cough suppressant  
Guaifenesin, USP 200 mg.....Expectorant

#### Uses

- temporarily relieves cough due to minor throat and bronchial irritation as may occur with a cold
- helps loosen phlegm (mucus) and thin bronchial secretions to drain bronchial tubes

#### Warnings

Do not use if you are now taking a prescription monoamine oxidase inhibitor (MAOI) (certain drugs for depression, psychiatric, or emotional conditions, or Parkinson's disease), or for 2 weeks after stopping the MAOI drug. If you do not know if your prescription drug contains an MAOI, ask a doctor or pharmacist before taking this product.

#### Ask a doctor before use if you have

- cough that occurs with too much phlegm (mucus)
- cough that lasts or is chronic such as occurs with smoking, asthma, chronic bronchitis, or emphysema

**Stop use and ask a doctor if cough lasts for more than 7 days, comes back, or is accompanied by fever, rash, or persistent headache. A persistent cough may be a sign of a serious condition.**

**If pregnant or breast-feeding, ask a health professional before use.**

**Keep out of reach of children.** In case of overdose, get medical help or contact a Poison Control Center right away (1-800-222-1222).

#### Directions

- do not take more than 6 doses in any 24-hour period
- measure only with dosing cup provided
- keep dosing cup with product

### Drug Facts (continued)

- mL = milliliter
- this adult product is not intended for use in children under 12 years of age

age	dose
adults and children 12 years and over	10 mL every 4 hours
children under 12 years	do not use

#### Other information

- each 10 mL contains: sodium 6 mg
- store at 20-25°C (68-77°F).  
Do not refrigerate.

**Inactive ingredients** anhydrous citric acid, FD&C red no. 40, flavor, glycerin, high fructose corn syrup, menthol, propylene glycol, purified water, sodium benzoate, sodium citrate, sucralose

#### Questions or comments?

1-800-SHOPRITE

\*This product is not manufactured or distributed by Pfizer, distributor of Robitussin® Cough + Chest Congestion DM.

**DO NOT USE IF PRINTED NECKBAND IS BROKEN OR MISSING**



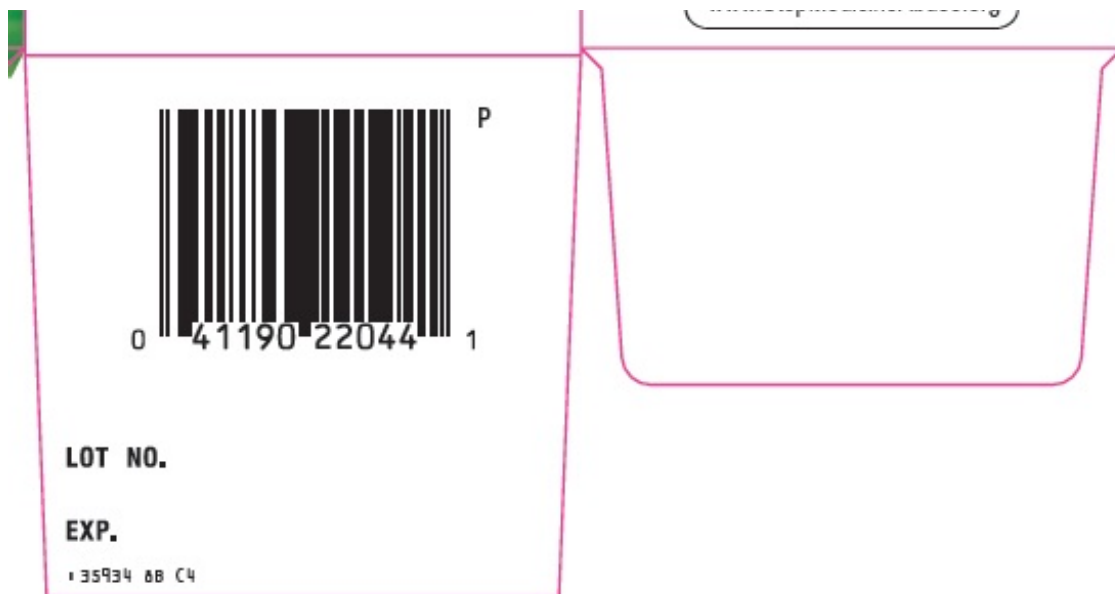
Your complete satisfaction  
or your money back.  
We welcome your questions  
and comments.  
Call: 1-800-ShopRite  
or contact us:  
[www.shoprite.com](http://www.shoprite.com)

Distributed By: Wakefern Food Corp.  
5000 Riverside Drive  
Keasbey, NJ 08832 ©2015

**PARENTS:**

Learn about teen medicine abuse

[www.StopMedicineAbuse.org](http://www.StopMedicineAbuse.org)



## SHOPRITE ADULT TUSSIN

dextromethorphan hbr, guaifenesin solution

### Product Information

<b>Product Type</b>	HUMAN OTC DRUG	<b>Item Code (Source)</b>	NDC:41190-359
<b>Route of Administration</b>	ORAL		

### Active Ingredient/Active Moiety

Ingredient Name	Basis of Strength	Strength
DEXTROMETHORPHAN HYDROBROMIDE (UNII: 9D2RTI9KYH) (DEXTROMETHORPHAN - UNII:7355X3ROTS)	DEXTROMETHORPHAN HYDROBROMIDE	20 mg in 10 mL
GUAIFENESIN (UNII: 495W7451VQ) (GUAIFENESIN - UNII:495W7451VQ)	GUAIFENESIN	200 mg in 10 mL

### Inactive Ingredients

Ingredient Name	Strength
ANHYDROUS CITRIC ACID (UNII: XF417D3PSL)	
FD&C RED NO. 40 (UNII: WZB9127XOA)	
GLYCERIN (UNII: PDC6A3C0OX)	
HIGH FRUCTOSE CORN SYRUP (UNII: XY6UN3QB6S)	
PROPYLENE GLYCOL (UNII: 6DC9Q167V3)	
WATER (UNII: 059QF0KO0R)	
SODIUM BENZOATE (UNII: OJ245FE5EU)	
MENTHOL, UNSPECIFIED FORM (UNII: L7T10EIP3A)	
SODIUM CITRATE, UNSPECIFIED FORM (UNII: 1Q73Q2JULR)	
SUCRALOSE (UNII: 96K6UQ3ZD4)	

### Product Characteristics

<b>Color</b>	RED (clear)	<b>Score</b>	
--------------	-------------	--------------	--

<b>Shape</b>		<b>Size</b>	
<b>Flavor</b>	CHERRY	<b>Imprint Code</b>	
<b>Contains</b>			

### Packaging

#	Item Code	Package Description	Marketing Start Date	Marketing End Date
1	NDC:41190-359-26	1 in 1 CARTON	05/01/2014	
1		118 mL in 1 BOTTLE; Type 0: Not a Combination Product		
2	NDC:41190-359-34	1 in 1 CARTON	05/01/2014	
2		237 mL in 1 BOTTLE; Type 0: Not a Combination Product		

### Marketing Information

Marketing Category	Application Number or Monograph Citation	Marketing Start Date	Marketing End Date
OTC monograph final	part341	05/01/2014	

**Labeler** - Wakefern Food Corporation (069722418)

Revised: 12/2019

Wakefern Food Corporation