

**DULCOLAX SOFT CHEWS MIXED BERRY- magnesium hydroxide tablet,
chewable
Chattem, Inc.**

Dulcolax Soft Chews Mixed Berry

Dulcolax® Soft Chews Saline Laxative - Mixed Berry

Drug Facts

Active ingredient (in each chew)

Magnesium hydroxide 1200 mg

Purpose

Saline laxative

Use

- for relief of occasional constipation (irregularity)
- this product generally produces bowel movement in ½ to 6 hours

Warnings

Ask a doctor before use if you have

- kidney disease ● a magnesium-restricted diet
- stomach pain, nausea or vomiting ● noticed a sudden change in bowel habits that lasts over 2 weeks

Ask a doctor or pharmacist before use if you are

taking a prescription drug. This product may interact with certain prescription drugs.

Stop use and ask a doctor if

- you have rectal bleeding or fail to have a bowel movement after using this product. These could be signs of a serious condition. ● you need to use a laxative for more than 1 week

If pregnant or breast-feeding,

ask a health professional before use.

Keep out of reach of children.

In case of overdose, get medical help or contact a Poison Control Center right away.

Directions

- drink a full glass (8 oz) of liquid with each dose
- dose may be taken as a single daily dose or in divided doses
- do not exceed the maximum recommended daily dose in a 24 hour period

adults and children 12 years of age and over	take 2 to 4 chews
children 6 to under 12 years of age	take 1 to 2 chews
children 4 to under 6 years of age	take 1 chew (single dose or in divided doses)
children under 4 years of age	ask a doctor

Other information

- each chew contains: **magnesium 500 mg, sodium 2 mg**
- store at room temperature 20°-25°C (68°-77°F)

Inactive ingredients

corn syrup, FD&C red no. 40, glycerin, hydrogenated coconut oil, lecithin (soy), natural flavor, sucrose, water

Questions?

Call **1-866-844-2798** or visit **www.Dulcolax.com**

PRINCIPAL DISPLAY PANEL

Dulcolax
Magnesium Hydroxide 1200 mg Saline Laxative
Soft
Chews
LAXATIVE
Mixed Berry
30 SOFT CHEWS



Dulcolax[®]

Magnesium Hydroxide 1200 mg Saline Laxative

soft Chews

LAXATIVE



Works naturally
with your body

RELIEF in as little
as **30 MINUTES**

30 SOFT CHEWS
INDIVIDUALLY WRAPPED
STIMULANT FREE

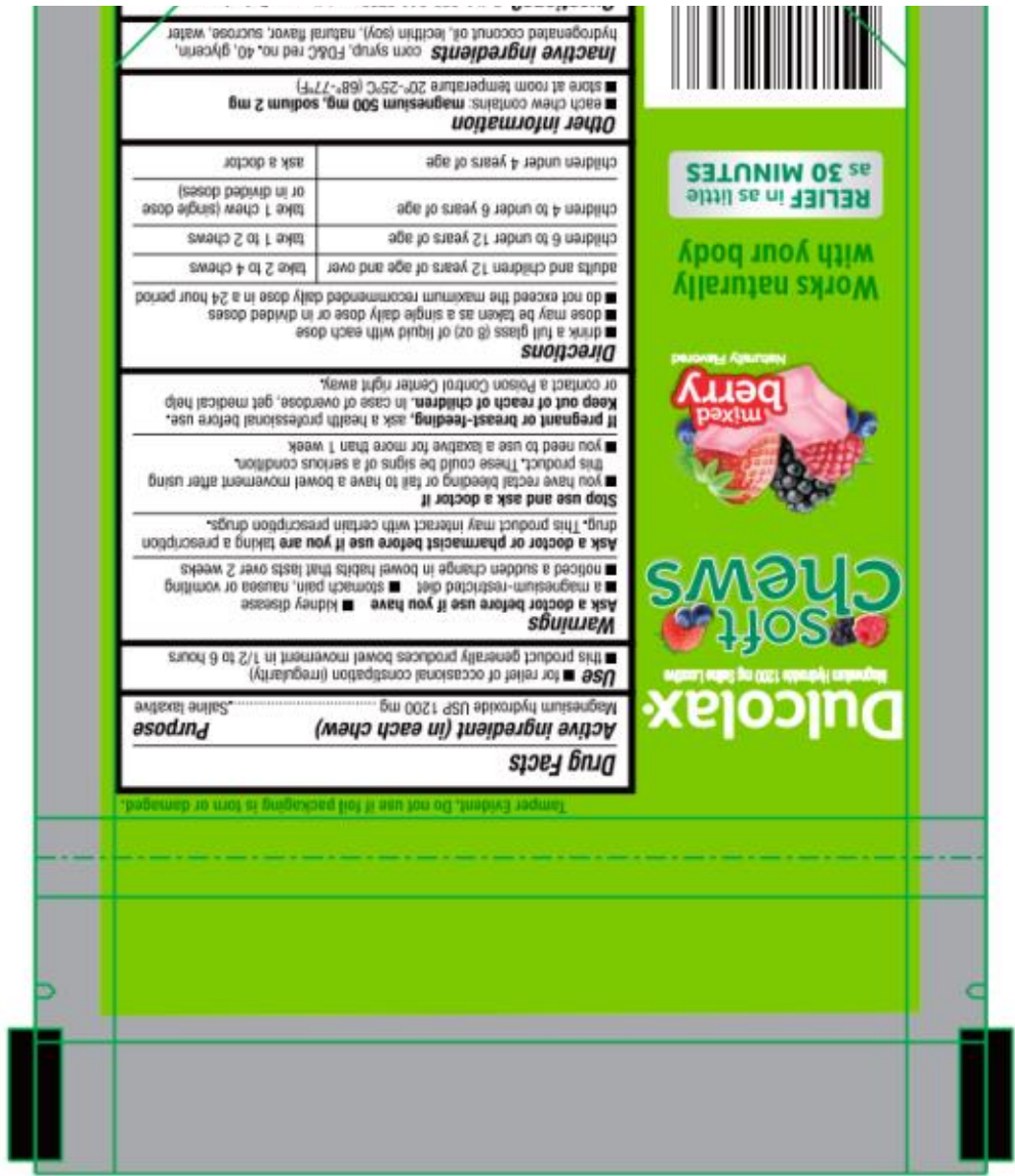


Dulcolax[®] does not
supply other brands.
Distributed by: Chas. E. Merck, Inc.
P.O. Box 22718
Chattanooga, TN 37409-0218
©2003
107-014 0000225 01/08/07-01



6 8 7421 02653 6

Questions? Call 1-866-844-2798 or visit www.dulcolax.com



DULCOLAX SOFT CHEWS MIXED BERRY

magnesium hydroxide tablet, chewable

Product Information			
Product Type	HUMAN OTC DRUG	Item Code (Source)	NDC:41167-0265
Route of Administration	ORAL		
Active Ingredient/Active Moiety			
Ingredient Name		Basis of Strength	Strength
MAGNESIUM HYDROXIDE (UNII: NBZ3QY004S) (MAGNESIUM CATION - UNII:T6V3LHY838)		MAGNESIUM HYDROXIDE	1200 mg

Inactive Ingredients				
Ingredient Name			Strength	
CORN SYRUP (UNII: 9G5L16BK6N)				
FD&C RED NO. 40 (UNII: WZB9127XOA)				
GLYCERIN (UNII: PDC6A3C0OX)				
HYDROGENATED COCONUT OIL (UNII: JY81OXM1OM)				
LECITHIN, SOYBEAN (UNII: 1DI56QDM62)				
SUCROSE (UNII: C151H8M554)				
WATER (UNII: 059QF0KO0R)				
Product Characteristics				
Color	pink	Score	no score	
Shape	RECTANGLE	Size	25mm	
Flavor	BERRY (Mixed Berry)	Imprint Code		
Contains				
Packaging				
#	Item Code	Package Description	Marketing Start Date	Marketing End Date
1	NDC:41167-0265-3	30 in 1 BAG; Type 0: Not a Combination Product	02/23/2020	
2	NDC:41167-0265-6	60 in 1 BAG; Type 0: Not a Combination Product	02/23/2020	
3	NDC:41167-0265-8	15 in 1 BAG; Type 0: Not a Combination Product	01/01/2021	
Marketing Information				
Marketing Category		Application Number or Monograph Citation	Marketing Start Date	Marketing End Date
OTC Monograph Drug		505G(a)(3)	02/23/2020	

Labeler - Chattem, Inc. (003336013)

Revised: 12/2024

Chattem, Inc.