

**NORLYDA- norethindrone**  
**Amneal Pharmaceuticals NY LLC**

-----  
**NORLYDA™**  
**(norethindrone tablets, USP) 0.35 mg**  
**Rx only**

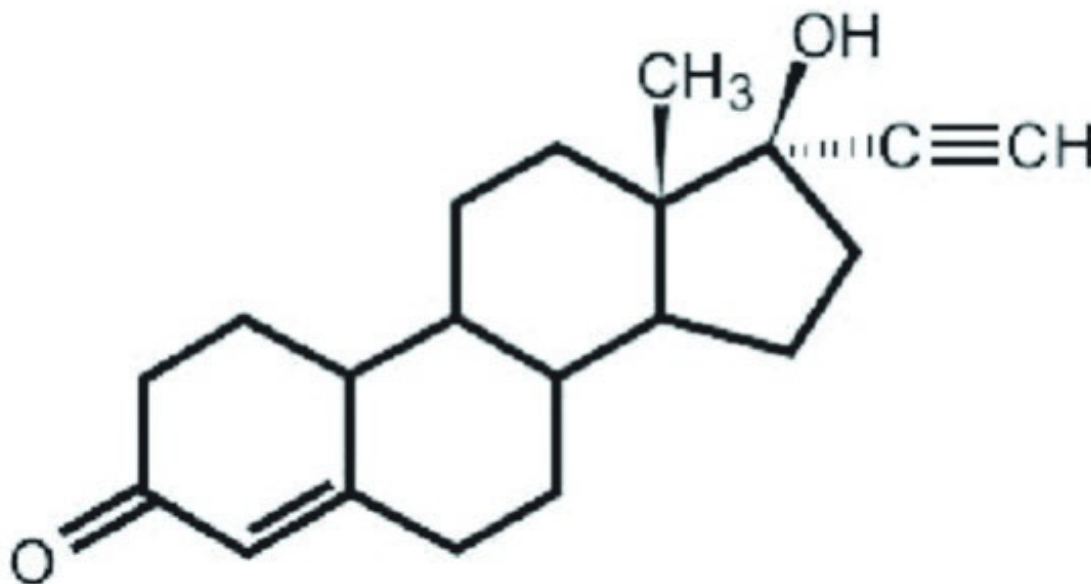
**Patients should be counseled that oral contraceptives do not protect against transmission of HIV (AIDS) and other sexually transmitted diseases (STDs) such as Chlamydia, genital herpes, genital warts, gonorrhea, hepatitis B, and syphilis.**

## **DESCRIPTION**

Each white NORLYDA (norethindrone tablet, USP) provides a continuous oral contraceptive regimen of 0.35 mg norethindrone, USP daily, and the inactive ingredients include hydrogenated cottonseed oil, hydroxypropyl cellulose, hypromellose, lactose monohydrate, magnesium stearate, povidone, pregelatinized starch, talc, and titanium dioxide.

Norethindrone, USP is a white to creamy white, odorless, crystalline powder practically insoluble in water; soluble in chloroform and in dioxane; sparingly soluble in alcohol; slightly soluble in ether.

The chemical name for norethindrone is 17-Hydroxy-19-Nor-17 $\alpha$ -pregn-4-en-20-yn-3-one. The structural formula follows:



norethindrone

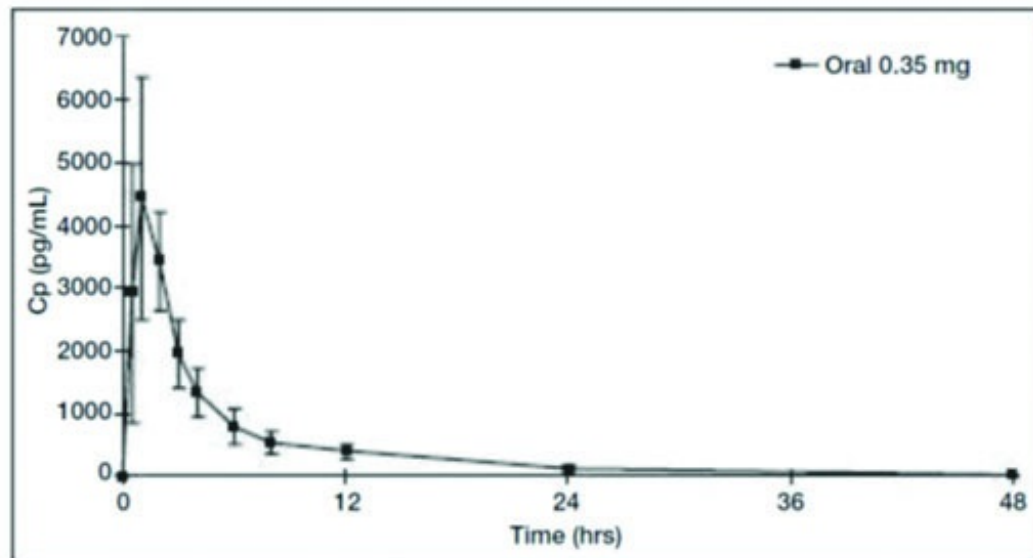
Therapeutic class = oral contraceptive.

## **CLINICAL PHARMACOLOGY**

**1. Mode of Action.** NORLYDA progestin-only oral contraceptives prevent conception by suppressing ovulation in approximately half of users, thickening the cervical mucus to inhibit sperm penetration, lowering the mid-cycle LH and FSH peaks, slowing the movement of the ovum through the fallopian tubes, and altering the endometrium.

**2. Pharmacokinetics.**

**Absorption:** Norethindrone is rapidly absorbed with maximum plasma concentrations occurring within 1 to 2 hours after norethindrone tablets administration (see **Table 1**). Norethindrone appears to be completely absorbed following oral administration; however, it is subject to first pass metabolism resulting in an absolute bioavailability of approximately 65%.



**Figure 1: Mean  $\pm$  SD Norethindrone Plasma Concentrations Following Norethindrone Administration.**

Peak plasma concentrations occur approximately 1 hour after administration (mean  $T_{max}$  1.2 hours). The mean (SD)  $C_{max}$  was 4816.8 (1532.6) pg/mL and generally occurred within 1 hour (mean) of tablet administration, ranging from 0.5 to 2 hours. The mean (SD)  $C_{avg}$  was 885 (250) pg/mL, however, the mean concentration at 24 hrs was 130 (47) pg/mL.

**Table 1** provides summary statistics of the pharmacokinetic parameters associated with single dose norethindrone administration.

**Table 1: Mean  $\pm$  SD Pharmacokinetic Parameters Following Single Dose Administration of Norethindrone in 12 Healthy Female Subjects Under Fasting Conditions**

Pharmacokinetic Parameter	Norethindrone 0.35 mg
$T_{max}$ (hr)	$1.2 \pm 0.5$
$C_{max}$ (pg/mL)	$4817 \pm 1533$
$AUC_{(0-48)}$ (pg·h/mL)	$21233 \pm 6002$
$t_{1/2}$ (h)	$7.7 \pm 0.5$

The food effect on the rate and extent of norethindrone absorption after norethindrone tablets administration has not been evaluated.

**Distribution:** Following oral administration, norethindrone is 36% bound to sex hormone-binding globulin (SHBG) and 61% bound to albumin. Volume of distribution of norethindrone is approximately 4 L/kg.

**Metabolism:** Norethindrone undergoes extensive biotransformation, primarily via reduction, followed by sulfate and glucuronide conjugation; less than 5% of a norethindrone dose is excreted unchanged; greater than 50% and 20 to 40% of a dose is excreted in urine and feces, respectively. The majority of metabolites in the circulation are sulfate, with glucuronides accounting for most of the urinary metabolites.

**Excretion:** Plasma clearance rate for norethindrone has been estimated to be approximately 600 L/day. Norethindrone is excreted in both urine and feces, primarily as metabolites. The mean terminal elimination half-life of norethindrone following single dose administration of norethindrone tablets is approximately 8 hours.

## INDICATIONS AND USAGE

**1. Indications.** Progestin-only oral contraceptives are indicated for the prevention of pregnancy.

**2. Efficacy.** If used perfectly, the first-year failure rate for progestin-only oral contraceptives is 0.5%. However, the typical failure rate is estimated to be closer to 5%, due to late or omitted pills. The following table lists the pregnancy rates for users of all major methods of contraception.

**Table 2: Percentage of Women Experiencing an Unintended Pregnancy During the First Year of Typical Use and the First Year of Perfect Use of Contraception and the Percentage Continuing Use at the End of the First Year. United States.**

	% of Women Experiencing an Unintended Pregnancy within the First Year of Use		% of Women Continuing Use at One Year <sup>3</sup>
<b>Method (1)</b>	<b>Typical Use<sup>1</sup> (2)</b>	<b>Perfect Use<sup>2</sup> (3)</b>	<b>(4)</b>
Chance <sup>4</sup>	85	85	
Spermicides <sup>5</sup>	26	6	40
Periodic abstinence	25		63
Calendar		9	
Ovulation Method		3	
Sympto-Thermal <sup>6</sup>		2	
Post-Ovulation		1	
Cap <sup>7</sup>			
Parous Women	40	26	42
Nulliparous Women	20	9	56
Sponge			
Parous Women	40	20	42
Nulliparous Women	20	9	56
Diaphragm <sup>7</sup>	20	6	56
Withdrawal	19	4	
Condom <sup>8</sup>			
Female (Reality)	21	5	56
Male	14	3	61
Pill	5		71
Progestin only		0.5	
Combined		0.1	
IUDs			
Progesterone T	2	1.5	81
Copper T380A	0.8	0.6	78
LNg 20	0.1	0.1	81
Depo-Provera <sup>®</sup>	0.3	0.3	70
Levonorgestrel Implants (Norplant <sup>®</sup> )	0.05	0.05	88

Female Sterilization	0.5	0.5	100
Male Sterilization	0.15	0.10	100

**Emergency Contraceptive Pills:** Treatment initiated within 72 hours after unprotected intercourse reduces the risk of pregnancy by at least 75%.<sup>9</sup>

**Lactational Amenorrhea Method:** LAM is a highly effective, *temporary* method of contraception.<sup>10</sup>

Source: Trussell, J, Contraceptive Efficacy. In: Hatcher RA, Trussell J, Stewart F, Cates W, Stewart GK, Kowal D, Guest F, Contraceptive Technology: Seventeenth Revised Edition. New York NY: Irvington

Publishers, 1998.

1. Among *typical* couples who initiate use of a method (not necessarily for the first time), the percentage who experience an accidental pregnancy during the first year if they do not stop use for any reason.
2. Among couples who initiate use of a method (not necessarily for the first time), and who use it *perfectly* (both consistently and correctly), the percentage who experience an accidental pregnancy during the first year if they do not stop use for any other reason.
3. Among couples attempting to avoid pregnancy, the percentage who continue to use a method for one year.
4. The percentage of women becoming pregnant noted in columns (2) and (3) are based on data from populations where contraception is not used and from women who cease using contraception in order to become pregnant. Among such populations, about 89% become pregnant within one year. This estimate was lowered slightly (to 85%) to represent the percentage that would become pregnant within one year among women now relying on reversible methods of contraception if they abandoned contraception altogether.
5. Foams, creams, gels, vaginal suppositories, and vaginal film.
6. Cervical mucus (ovulation) method supplemented by calendar in the pre-ovulatory and basal body temperature in the post-ovulatory phases.
7. With spermicidal cream or jelly.
8. Without spermicides.
9. The treatment schedule is one dose within 72 hours after unprotected intercourse, and a second dose 12 hours after the first dose. The Food and Drug Administration has declared the following brands of oral contraceptives to be safe and effective for emergency contraception: Ovral® (1 dose is 2 white pills), Alesse® (1 dose is 5 pink pills), Nordette® or Levlen® (1 dose is 4 yellow pills).
10. However, to maintain effective protection against pregnancy, another method of contraception must be used as soon as menstruation resumes, the frequency or duration of breastfeeds is reduced, bottle feeds are introduced, or the baby reaches 6 months of age.

## CONTRAINDICATIONS

Progestin-only oral contraceptives (POPs) should not be used by women who currently have the following conditions:

- Known or suspected pregnancy
- Known or suspected carcinoma of the breast
- Undiagnosed abnormal genital bleeding
- Hypersensitivity to any component of this product
- Benign or malignant liver tumors

- Acute liver disease

## WARNINGS

**Cigarette smoking greatly increases the possibility of suffering heart attacks and strokes. Women who use oral contraceptives are strongly advised not to smoke.**

NORLYDA tablets do not contain estrogen and, therefore, this insert does not discuss the serious health risks that have been associated with the estrogen component of combined oral contraceptives. The health care provider is referred to the prescribing information of combined oral contraceptives for a discussion of those risks, including, but not limited to, an increased risk of serious cardiovascular disease in women who smoke, carcinoma of the breast and reproductive organs, hepatic neoplasia, and changes in carbohydrate and lipid metabolism. The relationship between progestin-only oral contraceptives and these risks have not been established and there are no studies definitely linking progestin-only pill (POP) use to an increased risk of heart attack or stroke.

The physician should remain alert to the earliest manifestation of symptoms of any serious disease and discontinue oral contraceptive therapy when appropriate.

**1. Ectopic pregnancy.** The incidence of ectopic pregnancies for progestin-only oral contraceptive users is 5 per 1000 woman-years. Up to 10% of pregnancies reported in clinical studies of progestin-only oral contraceptive users are extrauterine. Although symptoms of ectopic pregnancy should be watched for, a history of ectopic pregnancy need not be considered a contraindication to use of this contraceptive method. Health providers should be alert to the possibility of an ectopic pregnancy in women who become pregnant or complain of lower abdominal pain while on progestin-only oral contraceptives.

**2. Delayed follicular atresia/Ovarian cysts.** If follicular development occurs, atresia of the follicle is sometimes delayed, and the follicle may continue to grow beyond the size it would attain in a normal cycle. Generally these enlarged follicles disappear spontaneously. Often they are asymptomatic; in some cases they are associated with mild abdominal pain. Rarely they may twist or rupture, requiring surgical intervention.

**3. Irregular genital bleeding.** Irregular menstrual patterns are common among women using progestin-only oral contraceptives. If genital bleeding is suggestive of infection, malignancy or other abnormal conditions, such nonpharmacologic causes should be ruled out. If prolonged amenorrhea occurs, the possibility of pregnancy should be evaluated.

**4. Carcinoma of the breast and reproductive organs.** Some epidemiologic studies of oral contraceptive users have reported an increased relative risk of developing breast cancer, particularly at a younger age and apparently related to duration of use. These studies have predominantly involved combined oral contraceptives and there is insufficient data to determine whether the use of POPs similarly increase the risk. Women with breast cancer should not use oral contraceptives because the

role of female hormone in breast cancer has not been fully determined.

Some studies suggest that oral contraceptive use has been associated with an increase in the risk of cervical intraepithelial neoplasia in some populations of women. However, there continues to be controversy about the extent to which such findings may be due to differences in sexual behavior and other factors. There is insufficient data to determine whether the use of POPs increases the risk of developing cervical intraepithelial neoplasia.

**5. Hepatic neoplasia.** Benign hepatic adenomas are associated with combined oral contraceptive use, although the incidence of benign tumors is rare in the United States. Rupture of benign, hepatic adenomas may cause death through intra-abdominal hemorrhage. Studies from Britain and the U.S. have shown an increased risk of developing hepatocellular carcinoma in combined oral contraceptive users. However, these cancers are rare. There is insufficient data to determine whether POPs increase the risk of developing hepatic neoplasia.

## **PRECAUTIONS**

### **1. General**

Patients should be counseled that oral contraceptives do not protect against transmission of HIV (AIDS) and other sexually transmitted diseases (STDs) such as Chlamydia, genital herpes, genital warts, gonorrhea, hepatitis B, and syphilis.

### **2. Physical Examination and Follow-Up**

It is considered good medical practice for sexually active women using oral contraceptives to have annual history and physical examinations. The physical examination may be deferred until after initiation of oral contraceptives if requested by the woman and judged appropriate by the clinician.

### **3. Carbohydrate and lipid metabolism**

Some users may experience slight deterioration in glucose tolerance, with increases in plasma insulin, but women with diabetes mellitus who use progestin-only oral contraceptives do not generally experience changes in their insulin requirements. Nonetheless, prediabetic and diabetic women in particular should be carefully monitored while taking POPs.

Lipid metabolism is occasionally affected in that HDL, HDL<sub>2</sub>, and apolipoprotein A-I and A-II may be decreased; hepatic lipase may be increased. There is no effect on total cholesterol, HDL<sub>3</sub>, LDL, or VLDL.

### **4. Drug interactions**

Change in contraceptive effectiveness associated with co-administration of other products:

a. *Anti-infective agents and anticonvulsants.* Contraceptive effectiveness may be reduced when hormonal contraceptives are co-administered with antibiotics, anticonvulsants, and other drugs that increase the metabolism of contraceptive steroids. This could result in unintended pregnancy or breakthrough bleeding. Examples include rifampin, barbiturates, phenylbutazone, phenytoin, carbamazepine, felbamate, oxcarbazepine, topiramate, and griseofulvin.

b. *Anti-HIV protease inhibitors.* Several of the anti-HIV protease inhibitors have been studied with co-administration of oral contraceptives; significant changes (increase and decrease) in the plasma levels of the estrogen and progestin have been noted in some cases. The safety and efficacy of OC products may be affected with the co-administration of anti-HIV protease inhibitors. Health care providers should refer to the label of the individual anti-HIV protease inhibitors for further drug-drug interaction information.

c. *Herbal products.* Herbal products containing St. John's Wort (*hypericum perforatum*) may induce

hepatic enzymes (cytochrome P450) and p-glycoprotein transporter and may reduce the effectiveness of contraceptive steroids. This may also result in breakthrough bleeding.

## **5. Interactions with Laboratory Tests**

The following endocrine tests may be affected by progestin-only oral contraceptive use:

- Sex hormone-binding globulin (SHBG) concentrations may be decreased.
- Thyroxine concentrations may be decreased, due to a decrease in thyroid binding globulin (TBG).

## **6. Carcinogenesis**

See **WARNINGS** section.

## **7. Pregnancy**

Many studies have found no effects on fetal development associated with long-term use of contraceptive doses of oral progestins. The few studies of infant growth and development that have been conducted have not demonstrated significant adverse effects. It is nonetheless prudent to rule out suspected pregnancy before initiating any hormonal contraceptive use.

## **8. Nursing Mothers**

Small amounts of progestin pass into the breast milk, resulting in steroid levels in infant plasma of 1 to 6% of the levels of maternal plasma.<sup>6</sup> However, isolated post-market cases of decreased milk production have been reported in POPs. Very rarely, adverse effects in the infant/child have been reported, including jaundice.

## **9. Fertility following discontinuation**

The limited available data indicate a rapid return of normal ovulation and fertility following discontinuation of progestin-only oral contraceptives.

## **10. Headache/Migraine**

If you have a headache or a worsening migraine headache with a new pattern that is recurrent, persistent, or severe, this requires discontinuation of oral contraceptives and evaluation of the cause.

## **11. Gastrointestinal**

Diarrhea and/or vomiting may reduce hormone absorption resulting in decreased serum concentrations.

## **12. Pediatric use**

Safety and efficacy of norethindrone have been established in women of reproductive age. Safety and efficacy are expected to be the same for postpubertal adolescents under the age of 16 and for users 16 years and older. Use of this product before menarche is not indicated.

## **INFORMATION FOR THE PATIENT**

Safety and efficacy of norethindrone have been established in women of reproductive age. Safety and efficacy are expected to be the same for postpubertal adolescents under the age of 16 and for users 16 years and older. Use of this product before menarche is not indicated.

## **ADVERSE REACTIONS**

- Menstrual irregularity is the most frequently reported side effect.
- Frequent and irregular bleeding are common, while long duration of bleeding episodes and amenorrhea are less likely.
- Headache, breast tenderness, nausea, and dizziness are increased among progestin-only oral

contraceptive users in some studies.

- Androgenic side effects such as acne, hirsutism, and weight gain occur rarely.

**To report SUSPECTED ADVERSE REACTIONS, contact Amneal Pharmaceuticals LLC at 1-877-835-5472 or FDA at 1-800-FDA-1088 or [www.fda.gov/medwatch](http://www.fda.gov/medwatch).**

## **OVERDOSAGE**

There have been no reports of serious ill effects from overdosage, including ingestion by children.

## **DOSAGE AND ADMINISTRATION**

To achieve maximum contraceptive effectiveness, NORLYDA tablets must be taken exactly as directed. One tablet is taken every day, at the same time. Administration is continuous, with no interruption between pill packs. See **PATIENT LABELING** for detailed instructions.

## **HOW SUPPLIED**

NORLYDA (norethindrone tablets, USP) 0.35 mg are white, round, biconvex film-coated tablets, debossed with “01” on one side and are supplied as follows:

NDC 69238-1583-6                      Blister Pack of 28 Tablets

## **STORAGE**

Store at 20° to 25° C (68° to 77° F) [see USP Controlled Room Temperature].

Distributed by:

**Amneal Pharmaceuticals LLC**

Bridgewater, NJ 08807

Rev. 07-2016-00

## **DETAILED INFORMATION FOR THE PATIENT**

**NORLYDA™ (nore-lye'-dah)**

**(norethindrone tablets, USP) 0.35 mg**

**Rx only**

**Patients should be counseled that oral contraceptives do not protect against transmission of HIV (AIDS) and other sexually transmitted diseases (STDs) such as Chlamydia, genital herpes, genital warts, gonorrhea, hepatitis B, and syphilis.**

## **INTRODUCTION**

This leaflet is about birth control pills that contain one hormone, a progestin. Please read this leaflet before you begin to take your pills. It is meant to be used along with talking with your doctor or clinic.

Progestin-only pills are often called “POPs” or “the minipill.” POPs have less progestin than the combined birth control pill (or “the pill”) which contains both an estrogen and a progestin.

## **HOW EFFECTIVE ARE POPS?**

About 1 in 200 (0.5%) POPs users will get pregnant in the first year if they all take POPs perfectly (that is, on time, every day). About 1 in 20 (5%) “typical” POPs users (including women who are late taking pills or miss pills) gets pregnant in the first year of use. The following table will help you compare the efficacy of different methods.



IUD: 1 to 2%

Depo-Provera® (injectable progesterone): 0.3%

Norplant® System (levonorgestrel implants): 0.1%

Diaphragm with spermicides: 18%

Spermicides alone: 21%

Male condom alone: 12%

Female condom alone: 21%

Cervical cap:

Women who have never given birth: 18%

Women who have given birth: 36%

Periodic abstinence: 20%

No methods: 85%

### **HOW DO POPS WORK?**

- They make the cervical mucus at the entrance to the womb (the uterus) too thick for the sperm to get through to the egg.
- They prevent ovulation (release of the egg from the ovary) in about half the time.
- They also affect other hormones, the fallopian tubes and the lining of the uterus.

### **YOU SHOULD NOT TAKE POPS**

- If there is any chance you may be pregnant.
- If you have breast cancer.
- If you have bleeding between your periods which has not been diagnosed.
- If you are taking certain drugs for epilepsy (seizures) or for TB. (See **USING POPS WITH OTHER MEDICINES** below.)
- If you are hypersensitive or allergic to any component of this product.
- If you have liver tumors, either benign or cancerous.
- If you have acute liver disease.

### **RISKS OF TAKING POPS**

**WARNING:** If you have sudden or severe pain in your lower abdomen or stomach area, you may have an ectopic pregnancy or an ovarian cyst. If this happens, you should contact your doctor or clinic immediately.

**1. Ectopic pregnancy.** An ectopic pregnancy is a pregnancy outside the womb. Because POPS protect against pregnancy, the chance of having pregnancy outside the womb is very low. If you do get pregnant while taking POPS, you have a slightly higher chance that the pregnancy will be ectopic than do users of some other birth control methods.

**2. Ovarian cysts.** These cysts are small sacs of fluid in the ovary. They are more common among POP users than among users of most other birth control methods. They usually disappear without treatment and rarely cause problems.

**3. Cancer of the reproductive organs and breasts.** Some studies in women who use combined oral contraceptives that contain both estrogen and a progestin have reported an increase in the risk of developing breast cancer, particularly at a younger age and apparently related to duration of use. There is insufficient data to determine whether the use of POPS similarly increases this risk.

Some studies have found an increase in the incidence of cancer of the cervix in women who use oral contraceptives. However, this finding may be related to factors other than the use of oral contraceptives

and there is insufficient data to determine whether the use of POPs increases the risk of developing cancer of the cervix.

**4. Liver tumors.** In rare cases, combined oral contraceptives can cause benign but dangerous liver tumors. These benign liver tumors can rupture and cause fatal internal bleeding. In addition, a possible but not definite association has been found with combined oral contraceptives and liver cancers in studies in which a few women who developed these very rare cancers were found to have used combined oral contraceptives for long periods of time. There is insufficient data to determine whether POPs increase the risk of liver tumors.

## **SEXUALLY TRANSMITTED DISEASES (STDs)**

**WARNING:** POPs do not protect against getting or giving someone HIV (AIDS) or any other STD, such as Chlamydia, gonorrhea, genital warts or herpes.

## **SIDE EFFECTS**

**1. Irregular bleeding.** The most common side effect of POPs is a change in menstrual bleeding. Your periods may be either early or late, and you may have some spotting between periods. Taking pills late or missing pills can also result in some spotting or bleeding.

**2. Other side effects.** Less common side effects include headaches, tender breasts, nausea and dizziness. Weight gain, acne and extra hair on your face and body have been reported, but are rare.

If you are concerned about any of these side effects, check with your doctor or clinic.

Call your doctor for medical advice about side effects. You may report side effects to FDA at **1-800-FDA-1088**.

## **USING POPS WITH OTHER MEDICINES**

Before taking a POP, inform your health care provider of any other medication, including over-the-counter medicine, that you may be taking.

If you are taking medicines for seizures (epilepsy) or tuberculosis (TB), tell your doctor or clinic. These medicines can make POPs less effective:

Medicines for seizures:

- Phenytoin (Dilantin®)
- Carbamazepine (Tegretol®)
- Phenobarbital

Medicine for TB:

- Rifampin (Rifampicin)

Before you begin taking any new medicines be sure your doctor or clinic knows you are taking birth control pills that contain a progestin.

## **HOW TO TAKE POPS**

### **IMPORTANT POINTS TO REMEMBER**

- POPs must be taken at the same time every day, so choose a time and then take the pill at the same time every day. Every time you take a pill late, and especially if you miss a pill, you are more likely to get pregnant.
- Start the next pack the day after the last pack is finished. There is no break between packs. Always have your next pack of pills ready.
- You may have some menstrual spotting between periods. Do not stop taking your pills if this happens.
- If you vomit soon after taking a pill, use a backup method (such as condom and/or spermicide) for 48 hours.
- If you want to stop taking POPs, you can do so at any time, but, if you remain sexually active and don't wish to become pregnant, be certain to use another birth control method.

- If you are not sure about how to take POPs, ask your doctor or clinic.

### **STARTING POPS**

- It's best to take your first POP on the first day of your menstrual period.
- If you decide to take your first POP on another day, use a backup method (such as condom and/or spermicide) every time you have sex during the next 48 hours.
- If you have had a miscarriage or an abortion, you can start POPs the next day.

### **IF YOU ARE LATE OR MISS TAKING YOUR POPS**

- If you are more than 3 hours late or you miss one or more POPs:
  1. TAKE a missed pill as soon as you remember that you missed it,
  2. THEN go back to taking POPs at your regular time,
  3. BUT be sure to use a backup method (such as condom and/or spermicide) every time you have sex for the next 48 hours.
- If you are not sure what to do about the pills you have missed, keep taking POPs and use a backup method until you can talk to your doctor or clinic.

### **IF YOU ARE BREASTFEEDING**

- If you are fully breastfeeding (not giving your baby any food or formula), you may start your pills 6 weeks after delivery.
- If you are partially breastfeeding (giving your baby some food or formula), you should start taking pills by 3 weeks after delivery.

### **IF YOU ARE SWITCHING PILLS**

- If you are switching from the combined pills to POPs, take the first POP the day after you finish the last active combined pill. Do not take any of the 7 inactive pills from the combined pill pack. You should know that many women have irregular periods after switching to POPs, but this is normal and to be expected.
- If you are switching from POPs to the combined pills, take the first active combined pill on the first day of your period, even if your POPs pack is not finished.
- If you switch to another brand of POPs, start the new brand anytime.
- If you are breastfeeding, you can switch to another method of birth control at any time, except do not switch to the combined pills until you stop breastfeeding or at least until 6 months after delivery.

### **PREGNANCY WHILE ON THE PILL**

If you become pregnant, or think you might be, stop taking POPs and contact your physician. Even though research has shown that POPs do not cause harm to the unborn baby, it is always best not to take any drugs or medicines that you don't need when you are pregnant.

You should get a pregnancy test:

- If your period is late and you took one or more pills late or missed taking them and had sex without a backup method.
- Anytime you miss 2 periods in a row.

### **WILL POPS AFFECT YOUR ABILITY TO GET PREGNANT LATER?**

If you want to become pregnant, simply stop taking POPs. POPs will not delay your ability to get pregnant.

### **BREASTFEEDING**

If you are breastfeeding, POPs will not affect the quality or amount of your breast milk or the health of your nursing baby. However, isolated cases of decreased milk production have been reported. If you suspect that you are not producing enough milk for your baby, contact your doctor or clinic.

## **OVERDOSE**

No serious problems have been reported when many pills were taken by accident, even by a small child, so there is usually no reason to treat an overdose.

## **OTHER QUESTIONS OR CONCERNS**

**WARNING:**  
**Cigarette smoking greatly increases the possibility of suffering heart attacks and strokes. Women who use oral contraceptives are strongly advised not to smoke.**

Diabetic women taking POPs do not generally require changes in the amount of insulin they are taking. However, your physician may monitor you more closely under these conditions.

If you have any questions or concerns, check with your doctor or clinic. You can also ask for the more detailed “professional package labeling” written for doctors and other health care providers.

## **HOW TO STORE YOUR POPS**

Store your POPs at 20° to 25° C (68° to 77° F) [see USP Controlled Room Temperature].

### **Keep out of reach of children.**

Alesse® is a registered trademark of Wyeth Pharmaceuticals, Inc.

Depo-Provera® is a registered trademark of Pharmacia and Upjohn Company

Dilantin® is a registered trademark of Parke-Davis Div of Pfizer Inc.

Nordette® or Levlen® is a registered trademark of Duramed Pharmaceuticals, Inc.

Norplant® System is a registered trademark of Wyeth Pharms Inc.

Ovral® is a registered trademark of Wyeth Laboratories.

Tegretol® is a registered trademark of Novartis Pharmaceuticals Corporation.

Distributed by:

**Amneal Pharmaceuticals LLC**

Bridgewater, NJ 08807

Rev. 07-2016-00

## **PRINCIPAL DISPLAY PANEL**

EXP: 0000

LOT: A0000

51733388

Rev. 07-2016-00

start

**Norlyda™** (norethindrone tablets USP, 0.35 mg)

NDC 69238-1583-6

SUN

MON

TUES

WED

THU

FRI

SAT

week 2

Rx only

SUN

MON

TUES

WED

THU

FRI

SAT

week 3

Dist. by: Amneal Pharmaceuticals LLC

SUN

MON

TUES

WED

THU

FRI

SAT

week 4

SUN

MON

TUES

WED

THU

FRI

SAT

Store at 20° to 25°C (68° to 77°F) [see USP Controlled Room Temperature].



**NORLYDA**

norethindrone kit

Product Information				
Product Type		HUMAN PRESCRIPTION DRUG	Item Code (Source)	
			NDC:69238-1583	
Packaging				
#	Item Code	Package Description	Marketing Start Date	Marketing End Date
1	NDC:69238-1583-6	1 in 1 CARTON	09/16/2016	
1		1 in 1 BLISTER PACK; Type 0: Not a Combination Product		
Quantity of Parts				
Part #	Package Quantity		Total Product Quantity	
Part 1			21	
Part 1 of 1				
NORLYDA				
norethindrone tablet, film coated				
Product Information				
Route of Administration		ORAL		
Active Ingredient/Active Moiety				
Ingredient Name			Basis of Strength	Strength
NORETHINDRONE (UNII: T18F433X4S) (NORETHINDRONE - UNII:T18F433X4S)			NORETHINDRONE	0.35 mg
Inactive Ingredients				
Ingredient Name				Strength
HYDROGENATED COTTONSEED OIL (UNII: Z82Y2C65EA)				
HYDROXYPROPYL CELLULOSE, LOW SUBSTITUTED (UNII: 2165RE0K14)				
HYPROMELLOSES (UNII: 3NXW29V3WO)				
LACTOSE MONOHYDRATE (UNII: EWQ57Q8I5X)				
MAGNESIUM STEARATE (UNII: 70097M6I30)				
POVIDONE (UNII: FZ989GH94E)				
STARCH, CORN (UNII: O8232NY3SJ)				
TALC (UNII: 7SEV7J4R1U)				
TITANIUM DIOXIDE (UNII: 15FIX9V2JP)				
Product Characteristics				
Color	WHITE	Score	no score	
Shape	ROUND	Size	6mm	
Flavor		Imprint Code	01	

**Contains****Marketing Information**

Marketing Category	Application Number or Monograph Citation	Marketing Start Date	Marketing End Date
ANDA	ANDA202260	09/16/2016	

**Marketing Information**

Marketing Category	Application Number or Monograph Citation	Marketing Start Date	Marketing End Date
ANDA	ANDA202260	09/16/2016	

**Labeler** - Amneal Pharmaceuticals NY LLC (123797875)

Revised: 5/2019

Amneal Pharmaceuticals NY LLC