



Methergine[®]
(methylergonovine maleate)
Tablets, USP
(methylergonovine maleate)
Injection, USP

Rx only

DESCRIPTION

Methergine[®] (methylergonovine maleate) is a semi-synthetic ergot alkaloid used for the prevention and control of postpartum hemorrhage.

Methergine is available in sterile ampuls of 1 mL, containing 0.2 mg methylergonovine maleate for intramuscular or intravenous injection and in tablets for oral ingestion containing 0.2 mg methylergonovine maleate.

Tablets

Active Ingredient: methylergonovine maleate, USP, 0.2 mg.

Inactive Ingredients: acacia, carnauba wax, D&C Red #7, FD&C Blue #1, gelatin special, lactose, maleic acid, mixed parabens, povidone, sodium benzoate, sodium hydroxide, starch, stearic acid, sucrose, talc, and titanium dioxide.

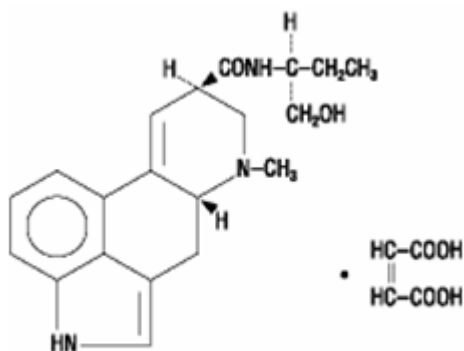
Ampuls: 1 mL, clear, colorless solution.

Active Ingredient: methylergonovine maleate, USP, 0.2 mg.

Inactive Ingredients: maleic acid, 0.10 mg; sodium chloride, 7.0 mg; water for injection, qs to 1 mL.

Chemically, methylergonovine maleate is designated as ergoline-8-carboxamide, 9,10-didehydro-*N*-[1-(hydroxymethyl)propyl]-6-methyl-, [8 β (*S*)]-, (*Z*)-2-butenedioate (1:1) (salt).

Its structural formula is



$C_{20}H_{25}N_3O_2 \cdot C_4H_4O_4$ Mol. wt. - 455.51

CLINICAL PHARMACOLOGY

Methergine (methylergonovine maleate) acts directly on the smooth muscle of the uterus and increases the tone, rate, and amplitude of rhythmic contractions. Thus, it induces a rapid and sustained tetanic uterotonic effect which shortens the third stage of labor and reduces blood loss. The onset of action after I.V. administration is immediate; after I.M. administration, 2-5 minutes, and after oral administration, 5-10 minutes.

Pharmacokinetic studies following an I.V. injection have shown that methylergonovine is rapidly distributed from plasma to peripheral tissues within 2-3 minutes or less. The bioavailability after oral administration was reported to be about 60% with no accumulation after repeated doses. During delivery, with intramuscular injection, bioavailability increased to 78%. Ergot alkaloids are mostly eliminated by hepatic metabolism and excretion, and the decrease in bioavailability following oral administration is probably a result of first-pass metabolism in the liver.

Bioavailability studies conducted in fasting healthy female volunteers have shown that oral absorption of a 0.2 mg methylergonovine tablet was fairly rapid with a mean peak plasma concentration of 3243 ± 1308 pg/mL observed at 1.12 ± 0.82 hours. For a 0.2 mg intramuscular injection, a mean peak plasma concentration of 5918 ± 1952 pg/mL was observed at 0.41 ± 0.21 hours. The extent of absorption of the tablet, based upon methylergonovine plasma concentrations, was found to be equivalent to that of the I.M. solution given orally, and the extent of oral absorption of the I.M. solution was proportional to the dose following administration of 0.1, 0.2, and 0.4 mg. When given intramuscularly, the extent of absorption of Methergine solution was about 25% greater than the tablet. The volume of distribution ($V_{d_{ss}}/F$) of methylergonovine was calculated to be 56.1 ± 17.0 liters, and the plasma clearance (CL_p/F) was calculated to be 14.4 ± 4.5 liters per hour. The plasma level decline was biphasic with a mean elimination half-life of 3.39 hours (range 1.5 to 12.7 hours). A delayed gastrointestinal absorption (T_{max} about 3 hours) of Methergine tablet might be observed in postpartum women during continuous treatment with this oxytocic agent.

INDICATIONS AND USAGE

Following delivery of the placenta, for routine management of uterine atony, hemorrhage and subinvolution of the uterus. For control of uterine hemorrhage in the second stage of labor following delivery of the anterior shoulder.

CONTRAINDICATIONS

Hypertension; toxemia; pregnancy; and hypersensitivity.

WARNINGS

General

This drug should not be administered I.V. routinely because of the possibility of inducing sudden hypertensive and cerebrovascular accidents. If I.V. administration is considered essential as a lifesaving measure, Methergine (methylergonovine maleate) should be given slowly over a period of no less than 60 seconds with careful monitoring of blood pressure. Intra-arterial or periarterial injection should be strictly avoided.

Caution should be exercised in the presence of impaired hepatic or renal function.

Breast-feeding

Mothers should not breast-feed during treatment with Methergine. Milk secreted during this period should be discarded. Methergine may produce adverse effects in the breast-feeding infant. Methergine may also reduce the yield of breast milk. Mothers should wait at least 12 hours after administration of the last dose of Methergine before initiating or resuming breast feeding

Coronary artery disease

Patients with coronary artery disease or risk factors for coronary artery disease (e.g., smoking, obesity, diabetes, high cholesterol) may be more susceptible to developing myocardial ischemia and infarction associated with methylergonovine-induced vasospasm.

Medication errors

Inadvertent administration of Methergine to newborn infants has been reported. In these cases of inadvertent neonatal exposure, symptoms such as respiratory depression, convulsions, cyanosis and oliguria have been reported. Usual treatment is symptomatic. However, in severe cases, respiratory and cardiovascular support is required.

Methergine has been administered instead of vitamin K and Hepatitis B vaccine, medications which are routinely administered to the newborn . Due to the potential for accidental neonatal exposure, Methergine injection should be stored separately from medications intended for neonatal administration.

PRECAUTIONS

General

Caution should be exercised in the presence of sepsis, obliterative vascular disease. Also use with caution during the second stage of labor. The necessity for manual removal of a retained placenta should occur only rarely with proper technique and adequate allowance of time for its spontaneous separation.

Drug Interactions

CYP 3A4 Inhibitors (e.g., Macrolide Antibiotics and Protease Inhibitors)

There have been rare reports of serious adverse events in connection with the coadministration of certain ergot alkaloid drugs (e.g., dihydroergotamine and ergotamine) and potent CYP 3A4 inhibitors, resulting in vasospasm leading to cerebral ischemia and/or ischemia of the extremities. Although there have been no reports of such interactions with methylergonovine alone, potent CYP 3A4 inhibitors should not be coadministered with methylergonovine. Examples of some of the more potent CYP 3A4 inhibitors include macrolide antibiotics (e.g., erythromycin, troleandomycin, clarithromycin), HIV protease or reverse transcriptase inhibitors (e.g., ritonavir, indinavir, nelfinavir, delavirdine) or azole antifungals (e.g., ketoconazole, itraconazole, voriconazole). Less potent CYP 3A4 inhibitors should be administered with caution. Less potent inhibitors include saquinavir, nefazodone, fluconazole, grapefruit juice, fluoxetine, fluvoxamine, zileuton, and clotrimazole. These lists are not exhaustive, and the prescriber should consider the effects on CYP 3A4 of other agents being considered for concomitant use with methylergonovine.

CYP3A4 inducers

Drugs (e.g. nevirapine, rifampicin) that are strong inducers of CYP3A4 are likely to decrease the pharmacological action of Methergine.

Beta-blockers

Caution should be exercised when Methergine is used concurrently with beta-blockers. Concomitant administration with beta-blockers may enhance the vasoconstrictive action of ergot alkaloids.

Anesthetics

Anesthetics like halothan and methoxyfluran may reduce the oxytocic potency of Methergine.

Glyceryl trinitrate and other antianginal drugs

Methylergonovine maleate produces vasoconstriction and can be expected to reduce the effect of glyceryl trinitrate and other antianginal drugs.

No pharmacokinetic interactions involving other cytochrome P450 isoenzymes are known.

Caution should be exercised when Methergine (methylergonovine maleate) is used concurrently with other vasoconstrictors, ergot alkaloids, or prostaglandins.

Carcinogenesis, Mutagenesis, Impairment of Fertility

No long-term studies have been performed in animals to evaluate carcinogenic potential. The effect of the drug on mutagenesis or fertility has not been determined.

Pregnancy

Category C. Animal reproductive studies have not been conducted with Methergine. It is also not known whether methylergonovine maleate can cause fetal harm or can affect reproductive capacity. Use of Methergine is contraindicated during pregnancy because of its uterotonic effects. (See INDICATIONS AND USAGE.)

Labor and Delivery

The uterotonic effect of Methergine is utilized after delivery to assist involution and decrease hemorrhage, shortening the third stage of labor.

Nursing Mothers

Mothers should not breast-feed during treatment with Methergine and at least 12 hours after administration of the last dose. Milk secreted during this period should be discarded.

Pediatric Use

Safety and effectiveness in pediatric patients have not been established.

Geriatric Use

Clinical studies of Methergine did not include sufficient number of subjects aged 65 and over to determine whether they respond differently from younger subjects. Other reported clinical experience has not identified differences in response between the elderly and younger patients. In general dose selection for an elderly patient should be cautious, usually starting at the low end of the dosing range, reflecting the greater frequency of decreased hepatic, renal, or cardiac function, and of concomitant disease or other drug therapy.

ADVERSE REACTIONS

The most common adverse reaction is hypertension associated in several cases with seizure and/or headache. Hypotension has also been reported. Abdominal pain (caused by uterine contractions), nausea and vomiting have occurred occasionally. Rarely observed reactions have included: acute myocardial infarction, transient chest pains, vasoconstriction, vasospasm, coronary arterial spasm, bradycardia, tachycardia, dyspnea, hematuria, thrombophlebitis, water intoxication, hallucinations, leg cramps, dizziness, tinnitus, nasal congestion, diarrhea, diaphoresis, palpitation, rash, and foul taste.¹

There have been rare isolated reports of anaphylaxis, without a proven causal relationship to the drug product.

Postmarketing Experience

The following adverse drug reactions have been derived from post-marketing experience with Methergine via spontaneous case reports. Because these reactions are reported voluntarily from a population of uncertain size, it is not possible to reliably estimate their frequency which is therefore categorized as not known.

Nervous system disorders

Cerebrovascular accident, paraesthesia

Cardiac disorders

Ventricular fibrillation, ventricular tachycardia, angina pectoris, atrioventricular block

DRUG ABUSE AND DEPENDENCE

Methergine (methylergonovine maleate) has not been associated with drug abuse or dependence of either a physical or psychological nature.

OVERDOSAGE

Symptoms of acute overdose may include: nausea, vomiting, oliguria, abdominal pain, numbness, tingling of the extremities, rise in blood pressure, in severe cases followed by hypotension, respiratory depression, hypothermia, convulsions, and coma.

Because reports of overdosage with Methergine (methylergonovine maleate) are infrequent, the lethal dose in humans has not been established. The oral LD₅₀ (in mg/kg) for the mouse is 187, the rat 93, and the rabbit 4.5.² Several cases of accidental Methergine injection in newborn infants have been reported, and in such cases 0.2 mg represents an overdose of great magnitude. However, recovery occurred in all but one case following a period of respiratory depression, hypothermia, hypertonicity with jerking movements, and convulsions.

Also, several children 1-3 years of age have accidentally ingested up to 10 tablets (2 mg) with no apparent ill effects. A postpartum patient took 4 tablets at one time in error and reported paresthesias and clamminess as her only symptoms.

Treatment of acute overdosage is symptomatic and includes the usual procedures of:

1. removal of offending drug by inducing emesis, gastric lavage, catharsis, and supportive diuresis.
2. maintenance of adequate pulmonary ventilation, especially if convulsions or coma develop.
3. correction of hypotension with pressor drugs as needed.
4. control of convulsions with standard anticonvulsant agents.
5. control of peripheral vasospasm with warmth to the extremities if needed.³

DOSAGE AND ADMINISTRATION

Parenteral drug products should be inspected visually for particulate matter and discoloration prior to administration.

Intramuscularly

1 mL, 0.2 mg, after delivery of the anterior shoulder, after delivery of the placenta, or during the puerperium. May be repeated as required, at intervals of 2-4 hours.

Intravenously

1 mL, 0.2 mg, administered slowly over a period of no less than 60 seconds (See WARNINGS.)

Orally

One tablet, 0.2 mg, 3 or 4 times daily in the puerperium for a maximum of 1 week.

HOW SUPPLIED

Tablets

0.2 mg round, coated, orchid, branded "78-54" one side, "SANDOZ" other side.

Bottles of 100.....NDC 0078-0054-05

Ampuls

1 mL size

Boxes of 20.....NDC 0078-0053-03

Store and Dispense

Tablets: Store below 25°C (77°F); in tight, light-resistant container.

Ampuls: Store in refrigerator, 2°C-8°C (36°F-46°F). Protect from light. Administer only if solution is clear and colorless.



Distributed by:
Novartis Pharmaceuticals Corporation
East Hanover, New Jersey 07936

© Novartis

T2012-June



Novartis Pharmaceuticals Corporation
East Hanover, NJ 07936

IMPORTANT DRUG WARNING

RE: **MEDICATION ERRORS RELATED TO ACCIDENTAL ADMINISTRATION OF METHERGINE® (methylergonovine maleate) INJECTION IN NEWBORN INFANTS**

June 2012

Dear Healthcare Professional:

Novartis Pharmaceuticals Corporation (“Novartis”) would like to inform you about medication errors associated with the accidental administration of Methergine injection in newborn infants. Methergine is used for the prevention and control of postpartum hemorrhage. Serious adverse outcomes that have been reported with inadvertent administration of Methergine to a newborn include **respiratory depression, cyanosis, oliguria, and seizures**. Examples of errors are listed below,¹

- Methergine injection intended for the mother has been inadvertently administered to the newborn in error.
- Methergine injection intended for the mother has been confused with routine injectable medications intended for the newborns, such as vitamin K injection and Hepatitis B vaccine.

These errors appear to be 1) due to the mother and newborn both being administered medications in the same room and/or 2) because the medications can be stored in similar locations such as a refrigerator attached to an automatic dispensing machine where medications for the mother and newborn are stored together. Therefore, the following recommendations are suggested:

- Methergine injection should be physically separated from other injectable pediatric medications, such as Hepatitis B vaccine and vitamin K. Having separate bins in one refrigerator may not ensure enough separation because there is still a possibility that Methergine injection, Hepatitis B vaccine or other medication could be placed in the wrong bin. Separate refrigerators or automated dispensing machines for the mother and newborn medications may be considered, if feasible.
- Administering medications to newborn in a setting other than in the mother's room. This could be a separate unit where all routine newborn medications are administered or a separate room on the Labor and Delivery unit where routine medications for newborns are administered.

¹ Cases have been reported to FDA, Novartis, and Quantros MedMarx



Novartis Pharmaceuticals Corporation
East Hanover, NJ 07936

Please note that this presentation of the risk profile for Methergine is not comprehensive. Please refer to the enclosed Methergine full Prescribing Information for a complete discussion of the risks associated with Methergine.

To report adverse events potentially associated with Methergine, please call Novartis Pharmaceuticals Corporation at 1-888-NOW-NOVA (1-888-669-6682).

Alternatively, adverse event information may be reported to FDA's MedWatch Reporting System by:

Phone at 1-800-FDA-1088 (1-800-332-1088)
Facsimile at 1-800-FDA-0178 (1-800-332-0178)
Mail using FDA Form 3500 located at <http://www.fda.gov/medwatch>

Please contact Novartis at 1-888-NOW-NOVA (1-888-669-6682) if you have any questions about Methergine or this information.

Sincerely,

Enclosure: Methergine – Full Prescribing Information