

**Mysoline® (primidone tablets, USP)**

**50 mg and 250 mg**

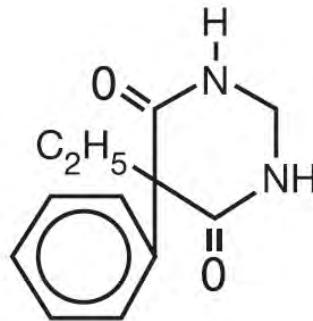
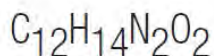
**Rx only**

Anticonvulsant

**DESCRIPTION**

Chemical name: 5-ethyl-5-phenyl-4,6 (1H, 5H)-pyrimidinedione.

Structural formula:



M.W. 218.25

MYSOLINE (primidone) is a white, crystalline, highly stable substance, M.P. 279-284°C. It is poorly soluble in water (60 mg per 100 mL at 37°C) and in most organic solvents. It possesses no acidic properties, in contrast to its barbiturate analog.

MYSOLINE 50 mg and 250 mg tablets contain the following inactive ingredients: lactose monohydrate, NF; magnesium stearate, NF; methylcellulose, USP; microcrystalline cellulose, NF; purified water, USP; sodium lauryl sulfate, NF; sodium starch glycolate, NF; and talc, USP.

MYSOLINE 250 mg tablets also contain ferric oxide yellow, NF.

**ACTIONS**

MYSOLINE raises electro- or chemoshock seizure thresholds or alters seizure patterns in experimental animals. The mechanism(s) of primidone's antiepileptic action is not known.

Primidone per se has anticonvulsant activity as do its two metabolites, phenobarbital and phenylethylmalonamide (PEMA). In addition to its anticonvulsant activity, PEMA potentiates the anticonvulsant activity of phenobarbital in experimental animals.

**INDICATIONS AND USAGE**

MYSOLINE, used alone or concomitantly with other anticonvulsants, is indicated in the control of grand mal, psychomotor, and focal epileptic seizures. It may control grand mal seizures refractory to other anticonvulsant therapy.

**CONTRAINDICATIONS**

Primidone is contraindicated in: 1) patients with porphyria and 2) patients who are hypersensitive to phenobarbital (see [ACTIONS](#)).

## WARNINGS

The abrupt withdrawal of antiepileptic medication may precipitate status epilepticus. The therapeutic efficacy of a dosage regimen takes several weeks before it can be assessed.

### Suicidal Behavior and Ideation

Antiepileptic drugs (AEDs), including MYSOLINE, increase the risk of suicidal thoughts or behavior in patients taking these drugs for any indication. Patients treated with any AED for any indication should be monitored for the emergence or worsening of depression, suicidal thoughts or behavior, and/or any unusual changes in mood or behavior.

Pooled analyses of 199 placebo-controlled clinical trials (mono- and adjunctive therapy) of 11 different AEDs showed that patients randomized to one of the AEDs had approximately twice the risk (adjusted Relative Risk 1.8, 95% CI:1.2, 2.7) of suicidal thinking or behavior compared to patients randomized to placebo. In these trials, which had a median treatment duration of 12 weeks, the estimated incidence rate of suicidal behavior or ideation among 27,863 AED-treated patients was 0.43%, compared to 0.24% among 16,029 placebo-treated patients, representing an increase of approximately one case of suicidal thinking or behavior for every 530 patients treated. There were four suicides in drug-treated patients in the trials and none in placebo-treated patients, but the number is too small to allow any conclusion about drug effect on suicide.

The increased risk of suicidal thoughts or behavior with AEDs was observed as early as 1 week after starting drug treatment with AEDs and persisted for the duration of treatment assessed. Because most trials included in the analysis did not extend beyond 24 weeks, the risk of suicidal thoughts or behavior beyond 24 weeks could not be assessed.

The risk of suicidal thoughts or behavior was generally consistent among drugs in the data analyzed. The finding of increased risk with AEDs of varying mechanisms of action and across a range of indications suggests that the risk applies to all AEDs used for any indication. The risk did not vary substantially by age (5 to 100 years) in the clinical trials analyzed.

Table 1 shows absolute and relative risk by indication for all evaluated AEDs.

**Table 1: Risk by indication for antiepileptic drugs in the pooled analysis**

<b>Indication</b>	<b>Placebo Patients with Events Per 1000 Patients</b>	<b>Drug Patients with Events Per 1000 Patients</b>	<b>Relative Risk: Incidence of Events in Drug Patients/ Incidence in Placebo Patients</b>	<b>Risk Difference: Additional Drug Patients with Events Per 1000 Patients</b>
Epilepsy	1.0	3.4	3.5	2.4
Psychiatric	5.7	8.5	1.5	2.9
Other	1.0	1.8	1.9	0.9
Total	2.4	4.3	1.8	1.9

The relative risk for suicidal thoughts or behavior was higher in clinical trials for epilepsy than in clinical trials for psychiatric or other conditions, but the absolute risk differences were similar for the epilepsy and psychiatric indications.

Anyone considering prescribing MYSOLINE or any other AED must balance the risk of suicidal thoughts or behavior with the risk of untreated illness. Epilepsy and many other illnesses for which AEDs are prescribed are themselves associated with morbidity and mortality and an increased risk of suicidal thoughts and behavior. Should suicidal thoughts and behavior emerge during treatment, the prescriber needs to consider whether the emergence of these symptoms in any given patient may be related to the illness being treated.

Patients, their caregivers, and families should be informed that AEDs increase the risk of suicidal thoughts and behavior and should be advised of the need to be alert for the emergence or worsening of the signs and symptoms of depression, any unusual changes in mood or behavior, or the emergence of suicidal thoughts, behavior, or thoughts about self-harm. Behaviors of concern should be reported immediately to healthcare providers.

### **Pregnancy**

To provide information regarding the effects of in utero exposure to MYSOLINE, physicians are advised to recommend that pregnant patients taking MYSOLINE enroll in the North American Antiepileptic Drug (NAAED) Pregnancy Registry. This can be done by calling the toll-free number 1-888-233-2334, and must be done by patients themselves. Information on the registry can also be found at the website <http://www.aedpregnancyregistry.org/>.

The effects of MYSOLINE in human pregnancy and nursing infants are unknown.

Recent reports suggest an association between the use of anticonvulsant drugs by women with epilepsy and an elevated incidence of birth defects in children born to these women. Data are more extensive with respect to diphenylhydantoin and phenobarbital, but these are also the most commonly prescribed anticonvulsants; less systematic or anecdotal reports suggest a possible similar association with the use of all known anticonvulsant drugs.

The reports suggesting an elevated incidence of birth defects in children of drug-treated epileptic women cannot be regarded as adequate to prove a definite cause-and-effect relationship.

There are intrinsic methodologic problems in obtaining adequate data on drug teratogenicity in humans; the possibility also exists that other factors leading to birth defects, e.g., genetic factors or the epileptic condition itself, may be more important than drug therapy. The great majority of mothers on anticonvulsant medication deliver normal infants. It is important to note that anticonvulsant drugs should not be discontinued in patients in whom the drug is administered to prevent major seizures because of the strong possibility of precipitating status epilepticus with attendant hypoxia and threat to life. In individual cases where the severity and frequency of the seizure disorders are such that the removal of medication does not pose a serious threat to the patient, discontinuation of the drug may be considered prior to and during pregnancy, although it cannot be said with any confidence that even minor seizures do not pose some hazard to the developing embryo or fetus.

The prescribing physician will wish to weigh these considerations in treating or counseling epileptic women of childbearing potential. Neonatal hemorrhage, with a coagulation defect resembling vitamin K deficiency, has been described in newborns whose mothers were taking primidone and other anticonvulsants. Pregnant women under anticonvulsant therapy should receive prophylactic vitamin K1 therapy for 1 month prior to, and during, delivery.

## **PRECAUTIONS**

The total daily dosage should not exceed 2 g. Since MYSOLINE therapy generally extends over prolonged periods, a complete blood count and a sequential multiple analysis-12 (SMA-12) test should be made every 6 months.

### **Nursing Mothers**

There is evidence in mothers treated with primidone that the drug appears in breast milk in substantial quantities. Since tests for the presence of primidone in biological fluids are too complex to be carried out in the average clinical laboratory, it is suggested that the presence of undue somnolence and drowsiness in nursing newborns of MYSOLINE-treated mothers be taken as an indication that nursing should be discontinued.

### **Information for Patients**

#### *Suicidal Thoughts and Behavior*

Patients, their caregivers, and families should be counseled that AEDs, including MYSOLINE, may increase the risk of suicidal thoughts and behavior and should be advised of the need to be alert for the emergence or worsening of symptoms of depression, any unusual changes in mood or behavior, or the emergence of suicidal thoughts, behavior, or thoughts about self-harm. Behaviors of concern should be reported immediately to healthcare providers.

#### *Pregnancy*

Patients should be encouraged to enroll in the NAAED Pregnancy Registry if they become pregnant. This registry is collecting information about the safety of antiepileptic drugs during pregnancy. To enroll, patients can call the toll-free number 1-888-233-2334 (see [WARNINGS, Pregnancy](#)). Please refer to the MYSOLINE Medication Guide provided with the product for more information.

## **ADVERSE REACTIONS**

The most frequently occurring early side effects are ataxia and vertigo. These tend to disappear with continued therapy, or with reduction of initial dosage. Occasionally, the following have been reported: nausea, anorexia, vomiting, fatigue, hyperirritability, emotional disturbances, sexual impotency, diplopia, nystagmus, drowsiness, and morbilliform skin eruptions. Granulocytopenia, agranulocytosis, and red-cell hypoplasia and aplasia, have been reported rarely. These and, occasionally, other persistent or severe side effects may necessitate withdrawal of the drug. Megaloblastic anemia may occur as a rare idiosyncrasy to MYSOLINE and to other anticonvulsants. The anemia responds to folic acid without necessity of discontinuing medication.

**To report SUSPECTED ADVERSE REACTIONS, contact Bausch Health US, LLC at 1-800-321-4576 or FDA at 1-800-FDA-1088 or [www.fda.gov/medwatch](http://www.fda.gov/medwatch).**

## DOSAGE AND ADMINISTRATION

### Usual Dosage

Patients 8 years of age and older who have received no previous treatment may be started on MYSOLINE according to the following regimen using either 50 mg or scored 250 mg MYSOLINE tablets:

- Days 1 to 3: 100 to 125 mg at bedtime.
- Days 4 to 6: 100 to 125 mg, twice a day.
- Days 7 to 9: 100 to 125 mg three times a day.
- Day 10 to maintenance: 250 mg three times a day.

For most adults and children 8 years of age and over, the usual maintenance dosage is three to four 250 mg MYSOLINE tablets in divided doses (250 mg three times a day or four times a day). If required, an increase to five or six 250 mg tablets daily may be made, but daily doses should not exceed 500 mg four times a day.

Dosage should be individualized to provide maximum benefit. In some cases, serum blood level determinations of primidone may be necessary for optimal dosage adjustment. The clinically effective serum level for primidone is between 5 to 12 mcg/mL.

INITIAL: ADULTS AND CHILDREN OVER 8						
KEY: •=50 mg tablet; ●=250 mg tablet						
DAY	1	2	3	4	5	6
AM				••	••	••
NOON						
PM	••	••	••	••	••	••
DAY	7	8	9	10	11	12
AM	••	••	••	●		
NOON	••	••	••	●	Adjust to Maintenance	
PM	••	••	••	●		

### Patients Already Receiving Other Anticonvulsants

MYSOLINE should be started at 100 to 125 mg at bedtime and gradually increased to maintenance level as the other drug is gradually decreased. This regimen should be continued until satisfactory dosage level is achieved for the combination, or the other medication is completely withdrawn. When therapy with MYSOLINE alone is the objective, the transition from concomitant therapy should not be completed in less than 2 weeks.

### **Pediatric Dosage**

For children under 8 years of age, the following regimen may be used:

Days 1 to 3: 50 mg at bedtime.

Days 4 to 6: 50 mg twice a day.

Days 7 to 9: 100 mg twice a day.

Day 10 to maintenance: 125 mg three times a day to 250 mg three times a day.

For children under 8 years of age, the usual maintenance dosage is 125 to 250 mg three times daily or, 10 to 25 mg/kg/day in divided doses.

### **HOW SUPPLIED**

#### **MYSOLINE Tablets**

Modified square, flat faced, beveled edge, compressed light yellow color tablet. One face is debossed (impressed) with “MYSOLINE” and “250” that are divided by a debossed bisect line. The opposite side is embossed with the letter “M”, in bottles of 100 (NDC 66490-691-10).

Modified square, flat faced, beveled edge, compressed white color tablet. One face is debossed (impressed) with “MYSOLINE” and “50” that are divided by a debossed bisect line. The opposite side is embossed with the letter “M”, in bottles of 100 (NDC 66490-690-10).

#### **Storage**

**Store at 20° to 25°C (68° to 77°F) [see USP Controlled Room Temperature].**

**Dispense in a tight, light-resistant container with a child-resistant closure.**

#### **Manufactured for:**

Bausch Health US, LLC  
Bridgewater, NJ 08807 USA

#### **Manufactured by:**

Bausch Health Companies Inc.  
Steinbach, MB R5G 1Z7, Canada

MYSOLINE is a trademark of Bausch Health Companies Inc. or its affiliates.

© 2020 Bausch Health Companies Inc. or its affiliates

Rev. 06/2020

**MEDICATION GUIDE**  
**MYSOLINE (My-so-lean)**  
**(primidone tablets, USP) 50 mg and 250 mg**

Read this Medication Guide before you start taking MYSOLINE and each time you get a refill. There may be new information. This information does not take the place of talking to your healthcare provider about your medical condition or treatment.

**What is the most important information I should know about MYSOLINE?**

**Like other antiepileptic drugs, MYSOLINE may cause suicidal thoughts or actions in a very small number of people, about 1 in 500.**

**Call a healthcare provider right away if you have any of these symptoms, especially if they are new, worse, or worry you:**

- thoughts about suicide or dying
- attempts to commit suicide
- new or worsening depression
- new or worsening anxiety
- feeling agitated or restless
- panic attacks
- trouble sleeping (insomnia)
- new or worsening irritability
- acting aggressive, being angry, or violent
- acting on dangerous impulses
- an extreme increase in activity and talking (mania)
- other unusual changes in behavior or mood

**Do not stop taking MYSOLINE without first talking to a healthcare provider.**

- Stopping MYSOLINE suddenly can cause serious problems. Stopping a seizure medicine suddenly in a patient who has epilepsy can cause seizures that will not stop (status epilepticus).

Suicidal thoughts or actions can be caused by things other than medicines. If you have suicidal thoughts or actions, your healthcare provider may check for other causes.

**How can I watch for early symptoms of suicidal thoughts and actions?**

- Pay attention to any changes, especially sudden changes, in mood, behaviors, thoughts, or feelings.
- Keep all follow-up visits with your healthcare provider as scheduled.
- Call your healthcare provider between visits as needed, especially if you are worried about symptoms.

## **What is MYSOLINE?**

MYSOLINE is a prescription medicine used alone or with other medicines to treat people with:

- generalized tonic-clonic (grand mal) seizures
- complex partial (psychomotor) seizures
- partial (focal) epileptic seizures

## **Who should not take MYSOLINE?**

Do not take MYSOLINE if you:

- have a genetic disorder called porphyria
- are allergic to phenobarbital

## **What should I tell my healthcare provider before taking MYSOLINE?**

Before you take MYSOLINE, tell your healthcare provider if you:

- have or have had depression, mood problems, or suicidal thoughts or behavior
- have any other medical conditions
- are pregnant or planning to become pregnant. MYSOLINE may harm your unborn baby. Tell your healthcare provider right away if you become pregnant while taking MYSOLINE. You and your healthcare provider will decide if you should take MYSOLINE while you are pregnant.
  - If you become pregnant while taking MYSOLINE, talk to your healthcare provider about registering with the North American Antiepileptic Drug (NAAED) Pregnancy Registry. You can enroll in this registry by calling 1-888-233-2334. The purpose of this registry is to collect information about the safety of antiepileptic drugs during pregnancy.
- are breastfeeding or plan to breastfeed. MYSOLINE can pass into breast milk. Talk to your healthcare provider about the best way to feed your baby if you take MYSOLINE.

**Tell your healthcare provider about all the medicines you take**, including prescription and nonprescription medicines, vitamins, and herbal supplements. Taking MYSOLINE with certain other medicines can cause side effects or affect how well they work. Do not start or stop other medicines without talking to your healthcare provider.

Know the medicines you take. Keep a list of them and show it to your healthcare provider and pharmacist each time you get a new medicine.

## **How should I take MYSOLINE?**

Take MYSOLINE exactly as prescribed. Your healthcare provider will tell you how much MYSOLINE to take and when to take it.

- Your healthcare provider may change your dose. Do not change your dose without talking to your healthcare provider.
- Do not stop taking MYSOLINE without first talking to your healthcare provider. Stopping MYSOLINE suddenly can cause serious problems.

- If you take too much MYSOLINE, call your healthcare provider or local Poison Control Center right away.

#### **What should I avoid while taking MYSOLINE?**

- MYSOLINE can make you sleepy or dizzy. Do not drink alcohol or take other drugs that make you sleepy or dizzy while taking MYSOLINE without first discussing this with your healthcare provider. Taking MYSOLINE with alcohol or drugs that cause sleepiness or dizziness may make your sleepiness or dizziness worse.
- Do not drive, operate heavy machinery, or do other dangerous activities until you know how MYSOLINE affects you. MYSOLINE can slow your thinking and motor skills.

#### **What are the possible side effects of MYSOLINE?**

#### **See “What is the most important information I should know about MYSOLINE?”**

MYSOLINE may cause other serious side effects including:

- Sleepiness that can be severe, especially when you first start taking MYSOLINE.
- MYSOLINE may rarely cause blood problems. Symptoms may include:
  - fever, swollen glands, or sore throat that come and go or do not go away
  - frequent infections or an infection that does not go away
  - tiredness
  - shortness of breath
- MYSOLINE may rarely cause allergic reactions. Symptoms may include:
  - skin rash
  - hives
  - sores in your mouth
  - blistering or peeling skin

The most common side effects of MYSOLINE include:

- problems with walking and moving
- feelings of dizziness, spinning, or swaying (vertigo)

These are not all the possible side effects of MYSOLINE. For more information, ask your healthcare provider or pharmacist.

Tell your healthcare provider if you have any side effect that bothers you or that does not go away.

**Call your doctor for medical advice about side effects. You may report side effects to FDA at 1-800-FDA-1088.**

#### **How should I store MYSOLINE?**

Store MYSOLINE at room temperature between 68° to 77°F (20° to 25°C) in a tight, light-resistant container.

**Keep MYSOLINE and all medicines out of reach of children.**

### **General Information about MYSOLINE**

Medicines are sometimes prescribed for purposes other than those listed in a Medication Guide. Do not use MYSOLINE for a condition for which it was not prescribed. Do not give MYSOLINE to other people, even if they have the same symptoms that you have. It may harm them.

This Medication Guide summarizes the most important information about MYSOLINE. If you would like more information, talk with your healthcare provider. You can ask your pharmacist or healthcare provider for information about MYSOLINE that is written for health professionals.

For more information, go to [www.bauschhealth.com](http://www.bauschhealth.com) or call 1-800-321-4576.

### **What are the ingredients in MYSOLINE?**

Active Ingredient: primidone, USP

Inactive Ingredients: lactose monohydrate, NF; magnesium stearate, NF; methylcellulose, USP; microcrystalline cellulose, NF; purified water, USP; sodium lauryl sulfate, NF; sodium starch glycolate, NF; and talc, USP.

MYSOLINE 250 mg tablets also contain ferric oxide yellow, NF.

### **Manufactured for:**

Bausch Health US, LLC  
Bridgewater, NJ 08807 USA

### **Manufactured by:**

Bausch Health Companies Inc.  
Steinbach, MB R5G 1Z7, Canada

MYSOLINE is a trademark of Bausch Health Companies Inc. or its affiliates.

© 2020 Bausch Health Companies Inc. or its affiliates

This Medication Guide has been approved by the U.S. Food and Drug Administration.

Rev. 06/2020

# BAUSCH Health

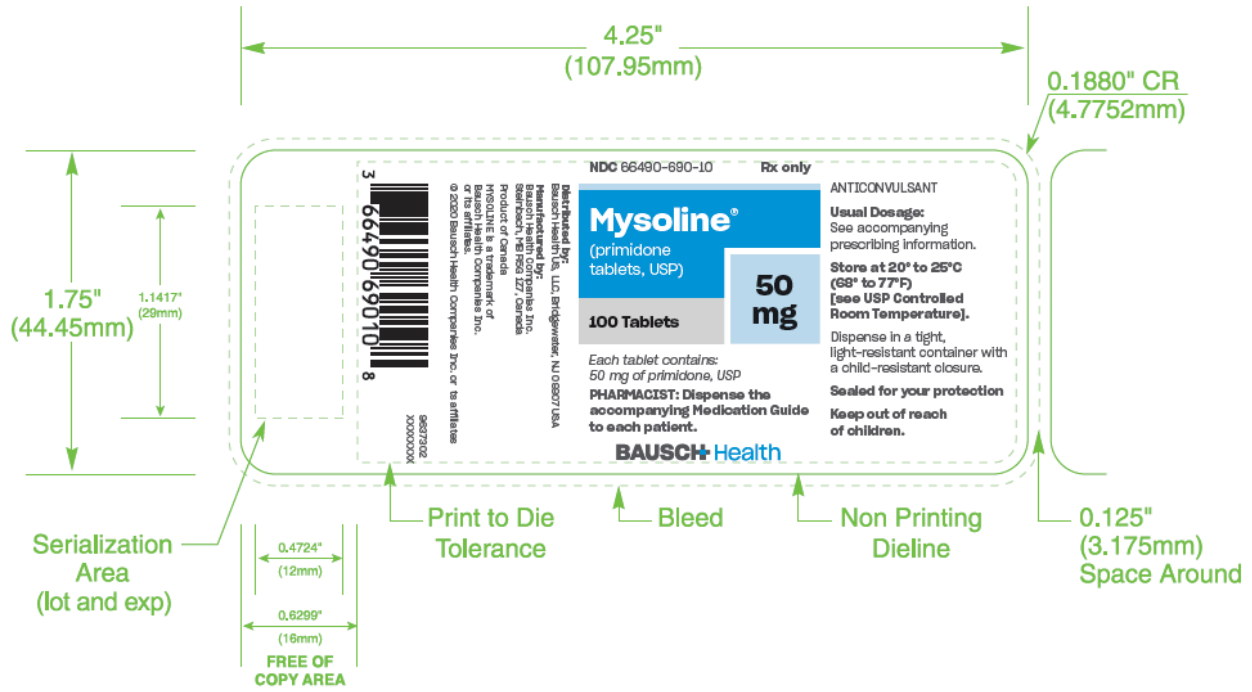
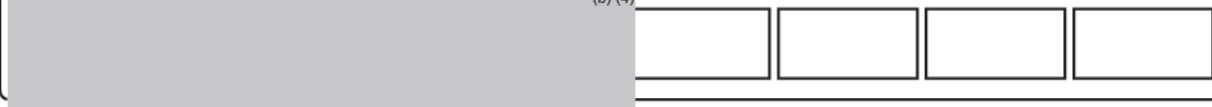
**DESCRIPTION:** Mysoline Primidone Tablets 50mg Label - US - Steinbach

**PART No.:** 9637302\_XXXXXXXX **SPEC No. or SPEC DIMENSIONS:** 4.25" x 1.75"

**SPECIAL INSTRUCTIONS:** N/A

**PRINT SUPPLIERS:** Please refer to Bausch Health's *Print Supplier Guidelines*  
 (b) (4)

**BAUSCH HEALTH DIELINE:** — ■



# BAUSCH Health

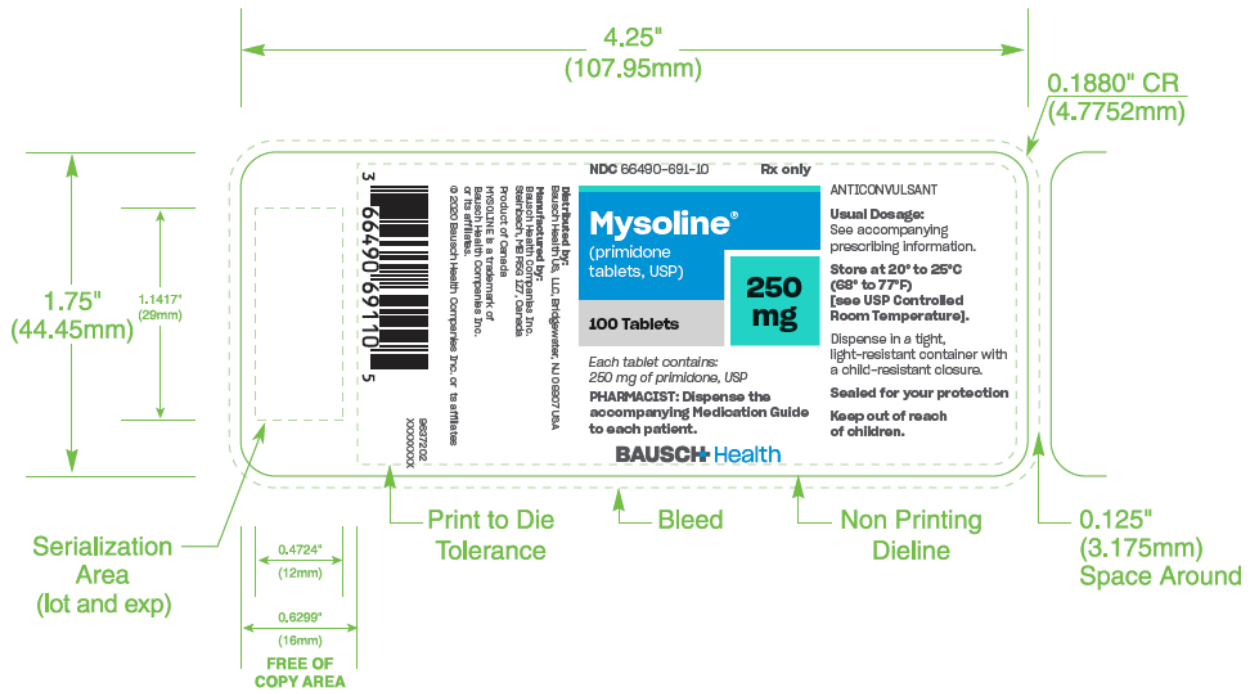
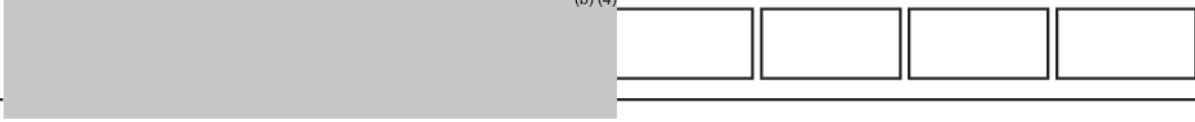
**DESCRIPTION:** Mysoline Primidone Tablets 250mg Label - US - Steinbach

**PART No.:** 9637202\_XXXXXXXX **SPEC No. or SPEC DIMENSIONS:** 4.25" x 1.75"

**SPECIAL INSTRUCTIONS:** N/A

**PRINT SUPPLIERS:** Please refer to Bausch Health's *Print Supplier Guidelines*  
 (b) (4)

**BAUSCH HEALTH DIELINE:** ———■





David  
Lewis

Digitally signed by David Lewis

Date: 6/10/2020 10:37:58AM

GUID: 508da72000029f287fa31e664741b577