

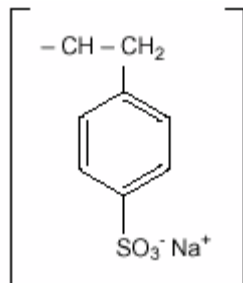
Kayexalate[®]

SODIUM POLYSTYRENE SULFONATE, USP

Cation-Exchange Resin

DESCRIPTION

KAYEXALATE, brand of sodium polystyrene sulfonate is a benzene, diethenyl-polymer, with ethenylbenzene, sulfonated, sodium salt and has the following structural formula:



The drug is a cream to light brown finely ground, powdered form of sodium polystyrene sulfonate, a cation-exchange resin prepared in the sodium phase with an *in vitro* exchange capacity of approximately 3.1 mEq (*in vivo* approximately 1 mEq) of potassium per gram. The sodium content is approximately 100 mg (4.1 mEq) per gram of the drug. It can be administered orally or in an enema.

CLINICAL PHARMACOLOGY

As the resin passes along the intestine or is retained in the colon after administration by enema, the sodium ions are partially released and are replaced by potassium ions. For the most part, this action occurs in the large intestine, which excretes potassium ions to a greater degree than does the small intestine. The efficiency of this process is limited and unpredictably variable. It commonly approximates the order of 33 percent but the range is so large that definitive indices of electrolyte balance must be clearly monitored.

Metabolic data are unavailable.

INDICATION AND USAGE

KAYEXALATE is indicated for the treatment of hyperkalemia.

CONTRAINDICATIONS

KAYEXALATE is contraindicated in the following conditions: patients with hypokalemia, patients with a history of hypersensitivity to polystyrene sulfonate resins, obstructive bowel disease, neonates with reduced gut motility (postoperatively or drug induced) and oral administration in neonates (see PRECAUTIONS).

WARNINGS

Alternative Therapy in Severe Hyperkalemia: Since effective lowering of serum potassium with KAYEXALATE may take hours to days, treatment with this drug alone may be insufficient to rapidly correct severe hyperkalemia associated with states of rapid tissue

breakdown (e.g., burns and renal failure) or hyperkalemia so marked as to constitute a medical emergency. Therefore, other definitive measures, including dialysis, should always be considered and may be imperative.

Hypokalemia: Serious potassium deficiency can occur from therapy with KAYEXALATE. The effect must be carefully controlled by frequent serum potassium determinations within each 24 hour period. Since intracellular potassium deficiency is not always reflected by serum potassium levels, the level at which treatment with KAYEXALATE should be discontinued must be determined individually for each patient. Important aids in making this determination are the patient's clinical condition and electrocardiogram. Early clinical signs of severe hypokalemia include a pattern of irritable confusion and delayed thought processes.

Electrocardiographically, severe hypokalemia is often associated with a lengthened Q-T interval, widening, flattening, or inversion of the T wave, and prominent U waves. Also, cardiac arrhythmias may occur, such as premature atrial, nodal, and ventricular contractions, and supraventricular and ventricular tachycardias. The toxic effects of digitalis are likely to be exaggerated. Marked hypokalemia can also be manifested by severe muscle weakness, at times extending into frank paralysis.

Electrolyte Disturbances: Like all cation-exchange resins, KAYEXALATE is not totally selective (for potassium) in its actions, and small amounts of other cations such as magnesium and calcium can also be lost during treatment. Accordingly, patients receiving KAYEXALATE should be monitored for all applicable electrolyte disturbances.

Systemic Alkalosis: Systemic alkalosis has been reported after cation-exchange resins were administered orally in combination with nonabsorbable cation-donating antacids and laxatives such as magnesium hydroxide and aluminum carbonate. Magnesium hydroxide should not be administered with KAYEXALATE. One case of grand mal seizure has been reported in a patient with chronic hypocalcemia of renal failure who was given KAYEXALATE with magnesium hydroxide as laxative. (See PRECAUTIONS, Drug Interactions.)

PRECAUTIONS

Caution is advised when KAYEXALATE is administered to patients who cannot tolerate even a small increase in sodium loads (i.e., severe congestive heart failure, severe hypertension, or marked edema). In such instances compensatory restriction of sodium intake from other sources may be indicated.

In the event of clinically significant constipation, treatment with KAYEXALATE should be discontinued until normal bowel motion is resumed. Magnesium-containing laxatives or sorbitol should not be used (see PRECAUTIONS, Drug Interactions).

Drug Interactions

Antacids: The simultaneous oral administration of KAYEXALATE with nonabsorbable cation-donating antacids and laxatives may reduce the resin's potassium exchange capability.

Non-absorbable cation-donating antacids and laxatives: Systemic alkalosis has been reported after cation-exchange resins were administered orally in combination with nonabsorbable cation-donating antacids and laxatives such as magnesium hydroxide and aluminum carbonate. Magnesium hydroxide should not be administered with KAYEXALATE.

One case of grand mal seizure has been reported in a patient with chronic hypocalcemia of renal failure who was given KAYEXALATE with magnesium hydroxide as a laxative.

Intestinal obstruction due to concretions of aluminum hydroxide when used in combination with KAYEXALATE has been reported.

Digitalis: The toxic effects of digitalis on the heart, especially various ventricular arrhythmias and A-V nodal dissociation, are likely to be exaggerated by hypokalemia, even in the face of serum digoxin concentrations in the “normal range”. (See WARNINGS.)

Sorbitol: Concomitant use of Sorbitol with KAYEXALATE has been implicated in cases of colonic necrosis. Therefore, concomitant administration is not recommended.

Lithium: KAYEXALATE may decrease absorption of lithium.

Thyroxine: KAYEXALATE may decrease absorption of thyroxine.

Carcinogenesis, Mutagenesis, Impairment of Fertility

Studies have not been performed.

Pregnancy Category C

Animal reproduction studies have not been conducted with KAYEXALATE. It is also not known whether KAYEXALATE can cause fetal harm when administered to a pregnant woman or can affect reproduction capacity. KAYEXALATE should be given to a pregnant woman only if clearly needed.

Nursing Mothers

It is not known whether this drug is excreted in human milk. Because many drugs are excreted in human milk, caution should be exercised when KAYEXALATE is administered to a nursing woman.

Pediatric Use

The effectiveness of KAYEXALATE in pediatric patients has not been established. In neonates, KAYEXALATE should not be given by the oral route. In both children and neonates particular care should be observed with rectal administration, as excessive dosage or inadequate dilution could result in impaction of the resin.

Due to the risk of digestive hemorrhage or colonic necrosis, particular care should be observed in premature infants or low birth weight infants.

ADVERSE REACTIONS

KAYEXALATE may cause some degree of gastric irritation. Anorexia, nausea, vomiting, and constipation may occur especially if high doses are given. Also, hypokalemia, hypocalcemia, and significant sodium retention, and their related clinical manifestations, may occur (see WARNINGS). Occasionally diarrhea develops. Large doses in elderly individuals may cause fecal impaction (see PRECAUTIONS). Rare instances of colonic necrosis have been reported. Intestinal obstruction due to concretions of aluminum hydroxide, when used in combination with KAYEXALATE, has been reported.

The following events have been reported from worldwide post marketing experience:

- Fecal impaction following rectal administration, particularly in children;
- Gastrointestinal concretions (bezoars) following oral administration;
- Gastrointestinal tract ulceration or necrosis which could lead to intestinal perforation; and,
- Rare cases of acute bronchitis and/or broncho-pneumonia associated with inhalation of particles of polystyrene sulfonate.

OVERDOSAGE

Overdosage may result in electrolyte disturbances including hypokalemia, hypocalcemia, and hypomagnesemia. Biochemical disturbances resulting from overdosage may give rise to clinical signs and symptoms of hypokalemia, including: irritability, confusion, delayed thought processes, muscle weakness, hyporeflexia, which may progress to frank paralysis and/or apnea. Tetany may occur. Electrocardiographic changes may be consistent with hypokalemia or hypocalcemia; cardiac arrhythmias may occur. Appropriate measures should be taken to correct serum electrolytes (potassium, calcium, magnesium), and the resin should be removed from the alimentary tract by appropriate use of laxatives or enemas.

DOSAGE AND ADMINISTRATION

Suspension of this drug should be freshly prepared and not stored beyond 24 hours.

The average daily adult dose of the resin is 15 g to 60 g. This is best provided by administering 15 g (approximately 4 *level* teaspoons) of KAYEXALATE one to four times daily. One gram of KAYEXALATE contains 4.1 mEq of sodium; one level teaspoon contains approximately 3.5 g of KAYEXALATE and 15 mEq of sodium. (A heaping teaspoon may contain as much as 10 g to 12 g of KAYEXALATE.) Since the *in vivo* efficiency of sodium-potassium exchange resins is approximately 33 percent, about one third of the resin's actual sodium content is being delivered to the body.

In smaller children and infants, lower doses should be employed by using as a guide a rate of 1 mEq of potassium per gram of resin as the basis for calculation.

Each dose should be given as a suspension in a small quantity of water or, for greater palatability, in syrup. The amount of fluid usually ranges from 20 mL to 100 mL, depending on the dose, or may be simply determined by allowing 3 mL to 4 mL per gram of resin. Healthcare professionals should follow full aspiration precautions when administering this product, such as placing and maintaining the patient in an upright position while the resin is being administered.

The resin may be introduced into the stomach through a plastic tube and, if desired, mixed with a diet appropriate for a patient in renal failure.

The resin may also be given, although with less effective results, in an enema consisting (for adults) of 30 g to 50 g every six hours. Each dose is administered as a warm emulsion (at body temperature) in 100 mL of aqueous vehicle, such as sorbitol. The emulsion should be agitated gently during administration. The enema should be retained as long as possible and followed by a cleansing enema.

After an initial cleansing enema, a soft, large size (French 28) rubber tube is inserted into the rectum for a distance of about 20 cm, with the tip well into the sigmoid colon, and taped in place. The resin is then suspended in the appropriate amount of aqueous vehicle at body temperature and introduced by gravity, while the particles are kept in suspension by stirring. The suspension

is flushed with 50 mL or 100 mL of fluid, following which the tube is clamped and left in place. If back leakage occurs, the hips are elevated on pillows or a knee-chest position is taken temporarily. A somewhat thicker suspension may be used, but care should be taken that no paste is formed, because the latter has a greatly reduced exchange surface and will be particularly ineffective if deposited in the rectal ampulla. The suspension is kept in the sigmoid colon for several hours, if possible. Then, the colon is irrigated with nonsodium containing solution at body temperature in order to remove the resin. Two quarts of flushing solution may be necessary. The returns are drained constantly through a Y tube connection. Particular attention should be paid to this cleansing enema when sorbitol has been used.

The intensity and duration of therapy depend upon the severity and resistance of hyperkalemia. KAYEXALATE should not be heated for to do so may alter the exchange properties of the resin.

HOW SUPPLIED

KAYEXALATE is available as a cream to light brown, finely ground powder in jars of 1 pound (453.6 g), NDC 0024-1075-01.

Store at 25° C (77° F); excursions permitted to 15° - 30° C (59° - 86° F) [see USP Controlled Room Temperature]

Rx Only

Manufactured for:
sanofi-aventis U.S. LLC
Bridgewater, NJ 08807

Revised April 2009

© 2009 sanofi-aventis U.S. LLC