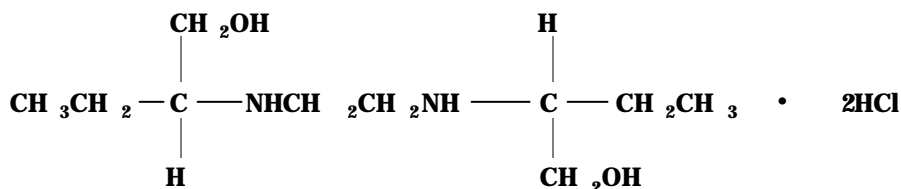


CI 4976-3 Myambutol-Pearl River for USA 1P 4.26.00 mew  
2-1/2" x 17-1/2" W-A DWG. 4224, DATED 7/1/97  
Black  
FIRST PROOF

MYAMBUTOL®  
Ethambutol Hydrochloride  
TABLETS  
100 mg and 400 mg  
CI 4976-3

#### DESCRIPTION

MYAMBUTOL ethambutol hydrochloride is an oral chemotherapeutic agent which is specifically effective against actively growing microorganisms of the genus *Mycobacterium*, including *M. tuberculosis*. The structural formula is:



(+)-2,2'(Ethylenediimino)-di-1-butanol dihydrochloride

MYAMBUTOL 100 and 400 mg tablets contain the following inactive ingredients: Gelatin, Hydroxypropyl Methylcellulose, Magnesium Stearate, Sodium Lauryl Sulfate, Sorbitol, Stearic Acid, Sucrose, Titanium Dioxide and other ingredients.

#### CLINICAL PHARMACOLOGY

MYAMBUTOL following a single oral dose of 25 mg/kg of body weight, attains a peak of 2 to 5 micrograms/mL in serum 2 to 4 hours after administration. When the drug is administered daily for longer periods of time at this dose, serum levels are similar. The serum level of MYAMBUTOL falls to undetectable levels by 24 hours after the last dose except in some patients with abnormal renal function. The intracellular concentrations of erythrocytes reach peak values approximately twice those of plasma and maintain this ratio throughout the 24 hours.

During the 24-hour period following oral administration of MYAMBUTOL approximately 50 percent of the initial dose is excreted unchanged in the urine, while an additional 8 to 15 percent appears in the form of metabolites. The main path of metabolism appears to be an initial oxidation of the alcohol to an aldehydic intermediate, followed by conversion to a dicarboxylic acid. From 20 to 22 percent of the initial dose is excreted in the feces as unchanged drug. No drug accumulation has been observed with consecutive single daily doses of 25 mg/kg in patients with normal kidney function, although marked accumulation has been demonstrated in patients with renal insufficiency.

MYAMBUTOL diffuses into actively growing mycobacterium cells such as tubercle bacilli. MYAMBUTOL appears to inhibit the synthesis of one or more metabolites, thus causing impairment of cell metabolism, arrest of multiplication,

and cell death. No cross resistance with other available antimycobacterial agents has been demonstrated.

MYAMBUTOL has been shown to be effective against strains of *Mycobacterium tuberculosis* but does not seem to be active against fungi, viruses, or other bacteria. *Mycobacterium tuberculosis* strains previously unexposed to MYAMBUTOL have been uniformly sensitive to concentrations of 8 or less micrograms/mL, depending on the nature of the culture media. When MYAMBUTOL has been used alone for treatment of tuberculosis, tubercle bacilli from these patients have developed resistance to MYAMBUTOL ethambutol hydrochloride by in vitro susceptibility tests; the development of resistance has been unpredictable and appears to occur in a step-like manner. No cross resistance between MYAMBUTOL and other antituberculous drugs has been reported. MYAMBUTOL has reduced the incidence of the emergence of mycobacterial resistance to isoniazid when both drugs have been used concurrently.

An agar diffusion microbiologic assay, based upon inhibition of *Mycobacterium smegmatis* (ATCC 607) may be used to determine concentrations of MYAMBUTOL in serum and urine. This technique has not been published, but further information can be obtained upon inquiry to Lederle Laboratories.

#### ANIMAL PHARMACOLOGY

Toxicological studies in dogs on high prolonged doses produced evidence of myocardial damage and failure, and depigmentation of the tapetum lucidum of the eyes, the significance of which is not known. Degenerative changes in the central nervous system, apparently not dose-related, have also been noted in dogs receiving ethambutol hydrochloride over a prolonged period.

In the rhesus monkey, neurological signs appeared after treatment with high doses given daily over a period of several months. These were correlated with specific serum levels of ethambutol hydrochloride and with definite neuroanatomical changes in the central nervous system. Focal interstitial carditis was also noted in monkeys which received ethambutol hydrochloride in high doses for a prolonged period.

When pregnant mice or rabbits were treated with high doses of ethambutol hydrochloride, fetal mortality was slightly but not significantly ( $P > 0.05$ ) increased. Female rats treated with ethambutol hydrochloride displayed slight but insignificant ( $P > 0.05$ ) decreases in fertility and litter size.

In fetuses born of mice treated with high doses of MYAMBUTOL during pregnancy, a low incidence of cleft palate, exencephaly and abnormality of the vertebral column were observed. Minor abnormalities of the cervical vertebra were seen in the newborn of rats treated with high doses of ethambutol hydrochloride during pregnancy. Rabbits receiving high doses of MYAMBUTOL during pregnancy gave birth to two fetuses with monophthalmia, one with a shortened right forearm accompanied by bilateral wrist-joint contracture and one with hare lip and cleft palate.

#### INDICATIONS

MYAMBUTOL is indicated for the treatment of pulmonary tuberculosis. It should not be used as the sole antituberculous drug, but should be used in conjunction

with at least one other antituberculous drug. Selection of the companion drug should be based on clinical experience, considerations of comparative safety and appropriate in vitro susceptibility studies. In patients who have not received previous antituberculous therapy, ie, initial treatment, the most frequently used regimens have been the following:

MYAMBUTOL plus isoniazid

MYAMBUTOL plus isoniazid plus streptomycin.

In patients who have received previous antituberculous therapy, mycobacterial resistance to other drugs used in initial therapy is frequent. Consequently, in such retreatment patients, MYAMBUTOL should be combined with at least one of the second line drugs not previously administered to the patient and to which bacterial susceptibility has been indicated by appropriate in vitro studies.

Antituberculous drugs used with MYAMBUTOL have included cycloserine, ethionamide, pyrazinamide, viomycin and other drugs. Isoniazid, aminosalicylic acid, and streptomycin have also been used in multiple drug regimens.

Alternating drug regimens have also been utilized.

#### CONTRAINDICATIONS

MYAMBUTOL is contraindicated in patients who are known to be hypersensitive to this drug. It is also contraindicated in patients with known optic neuritis unless clinical judgement determines that it may be used.

#### PRECAUTIONS

The effects of combinations of MYAMBUTOL ethambutol hydrochloride with other antituberculous drugs on the fetus is not known. While administration of this drug to pregnant human patients has produced no detectable effect upon the fetus, the possible teratogenic potential in women capable of bearing children should be weighed carefully against the benefits of therapy. There are published reports of five women who received the drug during pregnancy without apparent adverse effect upon the fetus.

MYAMBUTOL is not recommended for use in pediatric patients under thirteen years of age since safe conditions for use have not been established.

Patients with decreased renal function need the dosage reduced as determined by serum levels of MYAMBUTOL, since the main path of excretion of this drug is by the kidneys.

Because this drug may have adverse effects on vision, physical examination should include ophthalmoscopy, finger perimetry and testing of color discrimination. In patients with visual defects such as cataracts, recurrent inflammatory conditions of the eye, optic neuritis, and diabetic retinopathy, the evaluation of changes in visual acuity is more difficult, and care should be taken to be sure the variations in vision are not due to the underlying disease conditions. In such patients, consideration should be given to relationship between benefits expected and possible visual deterioration since evaluation of visual changes is difficult. (For recommended procedures, see next paragraphs under Adverse Reactions.)

As with any potent drug, periodic assessment of organ system functions, including renal, hepatic, and hematopoietic, should be made during long-term therapy.

## ADVERSE REACTIONS

MYAMBUTOL may produce decreases in visual acuity which appear to be due to optic neuritis. This effect may be related to dose and duration of treatment. This effect is generally reversible when administration of the drug is discontinued promptly. In rare cases recovery may be delayed for up to one year or more. Irreversible blindness has been reported.

Optic neuropathy including optic neuritis or retrobulbar neuritis occurring in association with ethambutol therapy may be characterized by one or more of the following events: decreased visual acuity, scotoma, color blindness, and/or visual defect. These events have also been reported in the absence of a diagnosis of optic or retrobulbar neuritis.

Patients should be advised to report promptly to their physician any change of visual acuity.

The change in visual acuity may be unilateral or bilateral and hence each eye must be tested separately and both eyes tested together. Testing of visual acuity should be performed before beginning MYAMBUTOL therapy and periodically during drug administration, except that it should be done monthly when a patient is on a dosage of more than 15 mg per kilogram per day. Snellen eye charts are recommended for testing of visual acuity. Studies have shown that there are definite fluctuations of one or two lines of the Snellen chart in the visual acuity of many tuberculous patients not receiving MYAMBUTOL®.

The following table may be useful in interpreting possible changes in visual acuity attributable to MYAMBUTOL.

Initial Reading	Snellen Significant Decrease	Significant Indicating Decrease	Number of Lines	Decrease Number of Points	Reading
20/13	20/25	3	12		
20/15	20/25	2	10		
20/20	20/30	2	10		
20/25	20/40	2	15		
20/30	20/50	2	20		
20/40	20/70	2	30		
20/50	20/70	1	20		

In general, changes in visual acuity less than those indicated under "Significant Number of Lines" and "Decrease-Number of Points", may be due to chance variation, limitations of the testing method or physiologic variability. Conversely, changes in visual acuity equaling or exceeding those under "Significant Number of Lines" and "Decrease-Number of Points" indicate need for retesting and careful evaluation of the patient's visual status. If careful evaluation confirms the magnitude of visual change and fails to reveal another cause, MYAMBUTOL should be discontinued and the patient reevaluated at frequent intervals. Progressive decreases in visual acuity during therapy must be considered to be due to MYAMBUTOL.

If corrective glasses are used prior to treatment, these must be worn during visual acuity testing. During 1 to 2 years of therapy, a refractive error may develop which must be corrected in order to obtain accurate test results. Testing the visual acuity through a pinhole eliminates refractive error. Patients developing visual abnormality during MYAMBUTOL treatment may show subjective visual symptoms before, or simultaneously with, the demonstration of decreases in visual acuity, and all patients receiving MYAMBUTOL should be questioned periodically about blurred vision and other subjective eye symptoms.

Recovery of visual acuity generally occurs over a period of weeks to months after the drug has been discontinued. Some patients have received MYAMBUTOL ethambutol hydrochloride again after such recovery without recurrence of loss of visual acuity.

Other adverse reactions reported include: anaphylactoid reactions, dermatitis, pruritus and joint pain; anorexia, nausea, vomiting, gastrointestinal upset, abdominal pain; fever, malaise, headache, and dizziness; mental confusion, disorientation and possible hallucinations. Numbness and tingling of the extremities due to peripheral neuritis have been reported infrequently.

Elevated serum uric acid levels occur and precipitation of acute gout has been reported. Pulmonary infiltrates and eosinophilia also have been reported during MYAMBUTOL therapy. Transient impairment of liver function as indicated by abnormal liver function tests is not an unusual finding. Since MYAMBUTOL is recommended for therapy in conjunction with one or more other antituberculous drugs, these changes may be related to the concurrent therapy.

#### DOSAGE and ADMINISTRATION

MYAMBUTOL should not be used alone, in initial treatment or in retreatment.

MYAMBUTOL should be administered on a once every 24-hour basis only.

Absorption is not significantly altered by administration with food. Therapy, in general, should be continued until bacteriological conversion has become permanent and maximal clinical improvement has occurred.

MYAMBUTOL is not recommended for use in pediatric patients under thirteen years of age since safe conditions for use have not been established.

**Initial Treatment:** In patients who have not received previous antituberculous therapy, administer MYAMBUTOL 15 mg per kilogram (7 mg per pound) of body weight, as a single oral dose once every 24 hours. In the more recent studies, isoniazid has been administered concurrently in a single, daily, oral dose.

**Retreatment:** In patients who have received previous antituberculous therapy, administer MYAMBUTOL 25 mg per kilogram (11 mg per pound) of body weight, as a single oral dose once every 24 hours. Concurrently administer at least one other antituberculous drug to which the organisms have been demonstrated to be susceptible by appropriate in vitro tests. Suitable drugs usually consist of those not previously used in the treatment of the patient. After 60 days of MYAMBUTOL administration, decrease the dose to 15 mg per kilogram (7 mg per pound) of body weight, and administer as a single oral dose once every 24 hours.

During the period when a patient is on a daily dose of 25 mg/kg, monthly eye examinations are advised.

See Table for easy selection of proper weight-dose tablet(s).

#### Weight-Dose Table

15 mg/kg (7 mg/lb) Schedule

Weight Range

Daily Dose

Pounds	Kilograms		In mg
Under 85 lbs.	Under 37 Kg	500	
85 – 94.5	37 – 43	600	
95 – 109.5	43 – 50	700	
110 – 124.5	50 – 57	800	
125 – 139.5	57 – 64	900	
140 – 154.5	64 – 71	1000	
155 – 169.5	71 – 79	1100	
170 – 184.5	79 – 84	1200	
185 – 199.5	84 – 90	1300	
200 – 214.5	90 – 97	1400	
215 and Over	Over 97	1500	

25 mg/kg (11 mg/lb) Schedule

Under 85 lbs.	Under 38 kg	900	
85 – 92.5	38 – 42	1000	
93 – 101.5	42 – 45.5	1100	
102 – 109.5	45.5 – 50	1200	
110 – 118.5	50 – 54	1300	
119 – 128.5	54 – 58	1400	
129 – 136.5	58 – 62	1500	
137 – 146.5	62 – 67	1600	
147 – 155.5	67 – 71	1700	
156 – 164.5	71 – 75	1800	
165 – 173.5	75 – 79	1900	
174 – 182.5	79 – 83	2000	
183 – 191.5	83 – 87	2100	
192 – 199.5	87 – 91	2200	
200 – 209.5	91 – 95	2300	
210 – 218.5	95 – 99	2400	
219 and Over	Over 99	2500	

#### HOW SUPPLIED

MYAMBUTOL® ethambutol hydrochloride Tablets

100 mg – round, convex, white, film coated tablets engraved M6 on one side and LL on the other, are supplied as follows:

NDC 51479-046-01 - Bottle of 100

400 mg – round, convex, white, scored, film coated tablets engraved with LL on one side and M to the left and 7 to the right of the score on the other side, are supplied as follows:

This label may not be the latest approved by FDA.  
For current labeling information, please visit <https://www.fda.gov/drugsatfda>

NDC 51479-047-01 - Bottle of 100  
NDC 51479-047-10 - Bottle of 1000  
NDC 51479-047-04 - Unit Dose 10 (2 X 5) Strips  
Store at controlled room temperature 15°-30°C (59°-86°F).  
RX only



**Dura**  
**PHARMACEUTICALS**

Manufactured by  
LEDERLE PHARMACEUTICAL DIVISION  
of American Cyanamid Company  
Pearl River, NY 10965  
For DURA PHARMACEUTICALS, INC.  
San Diego, CA 92121

CI 4976-3  
MY001B00

Revised April 17, 2000

---

**This is a representation of an electronic record that was signed electronically and  
this page is the manifestation of the electronic signature.**

---

/s/

-----  
Renata Albrecht  
10/10/01 02:50:55 PM