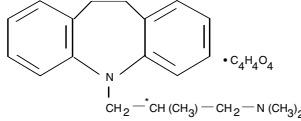


<b>SURMONTIL®</b> (Trimipramine Maleate)	B08-0718
Rx only	Rev. 6/07
<p><b>Suicidality and Antidepressant Drugs</b> Antidepressants increased the risk compared to placebo of suicidal thinking and behavior (suicidality) in children, adolescents, and young adults in short-term studies of major depressive disorder (MDD) and other psychiatric disorders. Anyone considering the use of Surmontil or any other antidepressant in a child, adolescent, or young adult must balance this risk with the clinical need. Short-term studies did not show an increase in the risk of suicidality with antidepressants compared to placebo in adults beyond age 24; there was a reduction in risk with antidepressants compared to placebo in adults aged 65 and older. Depression and certain other psychiatric disorders are themselves associated with increases in the risk of suicide. Patients of all ages who are started on antidepressant therapy should be monitored appropriately and observed closely for clinical worsening, suicidality, or unusual changes in behavior. Families and caregivers should be advised of the need for close observation and communication with the prescriber. Surmontil is not approved for use in pediatric patients. (See Warnings: Clinical Worsening and Suicide Risk, Precautions: Information for Patients, and Precautions: Pediatric Use)</p>	

**DESCRIPTION**  
Surmontil (trimipramine maleate) is 5-(3-(dimethylamino-2-methylpropyl)-10,11-dihydro-5H-dibenz (b,f) azepine acid maleate (racemic form).



Molecular Formula: C<sub>20</sub>H<sub>26</sub>N<sub>2</sub> • C<sub>4</sub>H<sub>4</sub>O<sub>4</sub>      Molecular Weight: 410.5

Surmontil capsules contain trimipramine maleate equivalent to 25 mg, 50 mg, or 100 mg of trimipramine as the base. The inactive ingredients present are black ink, FD&C Blue 1, gelatin, lactose, magnesium stearate, and titanium dioxide. The 25 mg dosage strength also contains benzyl alcohol, D&C Yellow 10, edetate calcium disodium, FD&C Yellow 6, parabens (butyl, propyl and methyl), sodium lauryl sulfate, and sodium propionate; the 50 mg dosage strength also contains benzyl alcohol, D&C Red 28, edetate calcium disodium, FD&C Red 40, FD&C Yellow 6, parabens (butyl, propyl and methyl), sodium lauryl sulfate, and sodium propionate.

Trimipramine maleate is prepared as a racemic mixture which can be resolved into levorotatory and dextrorotatory isomers. The asymmetric center responsible for optical isomerism is marked in the formula by an asterisk. Trimipramine maleate is an almost odorless, white or slightly cream-colored, crystalline substance, melting at 140°-144° C. It is very slightly soluble in ether and water, is slightly soluble in ethyl alcohol and acetone, and freely soluble in chloroform and methanol at 20° C.

**CLINICAL PHARMACOLOGY**  
Surmontil is an antidepressant with an anxiety-reducing sedative component to its action. The mode of action of Surmontil on the central nervous system is not known. However, unlike amphetamine-type compounds it does not act primarily by stimulation of the central nervous system. It does not act by inhibition of the monoamine oxidase system.

The single-dose pharmacokinetics of trimipramine were evaluated in a comparative study of 24 elderly subjects and 24 younger subjects; no clinically relevant differences were demonstrated based on age or gender.

**INDICATIONS AND USAGE**  
Surmontil is indicated for the relief of symptoms of depression. Endogenous depression is more likely to be alleviated than other depressive states. In studies with neurotic outpatients, the drug appeared to be equivalent to amitriptyline in the less-depressed patients but somewhat less effective than amitriptyline in the more severely depressed patients. In hospitalized depressed patients, trimipramine and imipramine were equally effective in relieving depression.

**CONTRAINDICATIONS**  
Surmontil is contraindicated in cases of known hypersensitivity to the drug. The possibility of cross-sensitivity to other dibenzazepine compounds should be kept in mind. Surmontil should not be given in conjunction with drugs of the monoamine oxidase inhibitor class (e.g., tranylcypromine, isocarboxazid or phenelzine sulfate). The concomitant use of monoamine oxidase inhibitors (MAOI) and tricyclic compounds similar to Surmontil has caused severe hyperpyretic reactions, convulsive crises, and death in some patients. At least two weeks should elapse after cessation of therapy with MAOI before instituting therapy with Surmontil. Initial dosage should be low and increased gradually with caution and careful observation of the patient. The drug is contraindicated during the acute recovery period after a myocardial infarction.

**WARNINGS**  
**Clinical Worsening and Suicide Risk**  
Patients with major depressive disorder (MDD), both adult and pediatric, may experience worsening of their depression and/or the emergence of suicidal ideation and behavior (suicidality) or unusual changes in behavior, whether or not they are taking antidepressant medications, and this risk may persist until significant remission occurs. Suicide is a known risk of depression and certain other psychiatric disorders, and these disorders themselves are the strongest predictors of suicide. There has been a long-standing concern, however, that antidepressants may have a role in inducing worsening of depression and the emergence of suicidality in certain patients during the early phases of treatment. Pooled analyses of short-term placebo-controlled trials of antidepressant drugs (SSRIs and others) showed that these drugs increase the risk of suicidal thinking and behavior (suicidality) in children, adolescents, and young adults (aged 18-24) with major depressive disorder (MDD) and other psychiatric disorders. Short-term studies did not show an increase in the risk of suicidality with antidepressants compared to placebo in adults beyond age 24; there was a reduction with antidepressants compared to placebo in adults aged 65 and older.

The pooled analysis of placebo-controlled trials in children and adolescents with MDD, obsessive compulsive disorder (OCD), or other psychiatric disorders including a total of 24 short-term trials of 9 antidepressant drugs in over 4400 patients. The pooled analyses of placebo-controlled trials in adults with MDD or other psychiatric disorders included a total of 295 short-term trials (median duration of 2 months) of 11 antidepressant drugs in over 77,000 patients. There was considerable variation in risk of suicidality among drugs, but a tendency toward an increase in the younger patients for almost all drugs studied. There were differences in absolute risk of suicidality across the different indications, with the highest incidence in MDD. The risk differences (drug vs placebo), however, were relatively stable with age strata and across indications. These risk differences (drug-placebo difference in the number of cases of suicidality per 1000 patients treated) are provided in Table 1.

Age Range	Table 1
	Drug-Placebo Difference in Number of Cases of Suicidality per 1000 Patients Treated
	Increases Compared to Placebo
<18	14 additional cases
18-24	5 additional cases
	Decreases Compared to Placebo
25-64	1 fewer case
≥65	6 fewer cases

No suicides occurred in any of the pediatric trials. There were suicides in the adult trials, but the number was not sufficient to reach any conclusion about drug effect on suicide. It is unknown whether the suicidality risk extends to longer-term use, i.e., beyond several months. However, there is substantial evidence from placebo-controlled maintenance trials in adults with depression that the use of antidepressants can delay the recurrence of depression.

**All patients being treated with antidepressants for any indication should be monitored appropriately and observed closely for clinical worsening, suicidality, and unusual changes in behavior, especially during the initial few months of a course of drug therapy, or at times of dose changes, either increases or decreases.**

The following symptoms, anxiety, agitation, panic attacks, insomnia, irritability, hostility, aggressiveness, impulsivity, akathisia (psychomotor restlessness), hypomania, and mania, have been reported in adult and pediatric patients being treated with antidepressants for major depressive disorder as well as for other indications, both psychiatric and nonpsychiatric. Although a causal link between the emergence of such symptoms and the worsening of depression and/or the emergence of suicidal impulses has not been established, there is concern that such symptoms may represent precursors to emerging suicidality.

Consideration should be given to changing the therapeutic regimen, including possibly discontinuing the medication, in patients whose depression is persistently worse, or who are experiencing emergent suicidality or symptoms that might be precursors to worsening depression or suicidality, especially if these symptoms are severe, abrupt in onset, or were not part of the patient's presenting symptoms.

**Families and caregivers of patients being treated with antidepressants for major**

**depressive disorder or other indications, both psychiatric and non-psychiatric, should be alerted about the need to monitor patients for the emergence of agitation, irritability, unusual changes in behavior, and the other symptoms described above, as well as the emergence of suicidality, and to report such symptoms immediately to health care providers. Such monitoring should include daily observation by families and caregivers.** Prescriptions for Surmontil should be written for the smallest quantity of capsules consistent with good patient management, in order to reduce the risk of overdose.

**Screening Patients for Bipolar Disorder:** A major depressive episode may be the initial presentation of bipolar disorder. It is generally believed (though not established in controlled trials) that treating such an episode with an antidepressant alone may increase the likelihood of precipitation of a mixed/manic episode in patients at risk for bipolar disorder. Whether any of the symptoms described above represent such a conversion is unknown. However, prior to initiating treatment with an antidepressant, patients with depression symptoms should be adequately screened to determine if they are at risk for bipolar disorder; such screening should include a detailed psychiatric history, including a family history of suicide, bipolar disorder, and depression. It should be noted that Surmontil is not approved for use in treating bipolar depression.

**General Consideration for Use**  
Extreme caution should be used when this drug is given to patients with any evidence of cardiovascular disease because of the possibility of conduction defects, arrhythmias, myocardial infarction, strokes, and tachycardia.

Caution is advised in patients with increased intraocular pressure, history of urinary retention, or history of narrow-angle glaucoma because of the drug's anticholinergic properties; hyperthyroid patients or those on thyroid medication because of the possibility of cardiovascular toxicity; patients with a history of seizure disorder, because this drug has been shown to lower the seizure threshold; patients receiving guanethidine or similar agents, since Surmontil (trimipramine maleate) may block the pharmacologic effects of these drugs.

Since the drug may impair the mental and/or physical abilities required for the performance of potentially hazardous tasks, such as operating an automobile or machinery, the patient should be cautioned accordingly.

**PRECAUTIONS**  
**General**  
The possibility of suicide is inherent in any severely depressed patient and persists until a significant remission occurs. When a patient with a serious suicidal potential is not hospitalized, the prescription should be for the smallest amount feasible.

In schizophrenic patients activation of the psychosis may occur and require reduction of dosage or the addition of a major tranquilizer to the therapeutic regime.

Manic or hypomanic episodes may occur in some patients, in particular those with cyclic-type disorders. In some cases therapy with Surmontil must be discontinued until the episode is relieved, after which therapy may be reinstated at lower dosages if still required.

Concurrent administration of Surmontil and electroshock therapy may increase the hazards of therapy. Such treatment should be limited to those patients for whom it is essential. When possible, discontinue the drug for several days prior to elective surgery. Surmontil should be used with caution in patients with impaired liver function.

Chronic animal studies showed occasional occurrence of hepatic congestion, fatty infiltration, or increased serum liver enzymes at the highest dose of 60 mg/kg/day. Both elevation and lowering of blood sugar have been reported with tricyclic antidepressants.

**Information for Patients:**  
Prescribers or other health professionals should inform patients, their families, and their caregivers about the benefits and risks associated with treatment with Surmontil and should counsel them in its appropriate use. A patient Medication Guide about "Antidepressant Medicines, Depression and other Serious Mental Illness, and Suicidal Thoughts or Actions" is available for Surmontil. The prescriber or health professional should instruct patients, their families, and their caregivers to read the Medication Guide and should assist them in understanding its contents. Patients should be given the opportunity to discuss the contents of the Medication Guide and to obtain answers to any questions they may have. The complete text of the Medication Guide is reprinted at the end of this document.

Patients should be advised of the following issues and asked to alert their prescriber if these occur while taking Surmontil.

**Clinical Worsening and Suicide Risk:** Patients, their families, and their caregivers should be encouraged to be alert to the emergence of anxiety, agitation, panic attacks, insomnia, irritability, hostility, aggressiveness, impulsivity, akathisia, (psychomotor restlessness), hypomania, mania, or other unusual changes in behavior, worsening of depression, and suicidal ideation, especially early during antidepressant treatment and when the dose is adjusted up or down. Families and caregivers of patients should be advised to look for the emergence of such symptoms on a day-to-day basis, since changes may be abrupt. Such symptoms should be reported to the patient's prescriber or health professional, especially if they are severe, abrupt in onset, or were not part of the patient's presenting symptoms. Symptoms such as these may be associated with an increased risk for suicidal thinking and behavior and indicate a need for very close monitoring and possibly changes in the medication.

**Drug Interactions**  
**Cimetidine**  
There is evidence that cimetidine inhibits the elimination of tricyclic antidepressants. Downward adjustment of Surmontil dosage may be required if cimetidine therapy is initiated; upward adjustment if cimetidine therapy is discontinued.

**Alcohol**  
Patients should be warned that the concomitant use of alcoholic beverages may be associated with exaggerated effects.

**Catecholamines/Anticholinergics**  
It has been reported that tricyclic antidepressants can potentiate the effects of catecholamines. Similarly, atropinelike effects may be more pronounced in patients receiving anticholinergic therapy. Therefore, particular care should be exercised when it is necessary to administer tricyclic antidepressants with sympathomimetic amines, local decongestants, local anesthetics containing epinephrine, atropine or drugs with an anticholinergic effect. In resistant cases of depression in adults, a dose of 2.5 mg/kg/day may have to be exceeded. If a higher dose is needed, ECG monitoring should be maintained during the initiation of therapy and at appropriate intervals during stabilization of dose.

**Drugs Metabolized by P450 2D6**  
The biochemical activity of the drug metabolizing isozyme cytochrome P450 2D6 (debrisoquin hydroxylase) is reduced in a subset of the caucasian population (about 7-10% of caucasians are so called "poor metabolizers"); reliable estimates of the prevalence of reduced P450 2D6 isozyme activity among Asian, African, and other populations are not yet available. Poor metabolizers have higher than expected plasma concentrations of tricyclic antidepressants (TCAs) when given usual doses. Depending on the fraction of drug metabolized by P450 2D6, the increase in plasma concentration may be small, or quite large (8 fold increase in plasma AUC of the TCA).

In addition, certain drugs inhibit the activity of the isozyme and make normal metabolizers resemble poor metabolizers. An individual who is stable on a given dose of TCA may become abruptly toxic when given one of these inhibiting drugs as concomitant therapy. The drugs that inhibit cytochrome P450 2D6 include some that are not metabolized by the enzyme (quinidine; cimetidine) and many that are substrates for P450 2D6 (many other antidepressants, phenothiazines, and the Type 1C antiarrhythmics propafenone and flecainide). While all the selective serotonin reuptake inhibitors (SSRIs), e.g., fluoxetine, sertraline, and paroxetine, inhibit P450 2D6, they may vary in the extent of inhibition. The extent to which SSRI TCA interactions may pose clinical problems will depend on the degree of inhibition and the pharmacokinetics of the SSRI involved. Nevertheless, caution is indicated in the co-administration of TCAs with any of the SSRIs and also in switching from one class to the other. Of particular importance, sufficient time must elapse before initiating TCA treatment in a patient being withdrawn from fluoxetine, given the long half-life of the parent and active metabolite (at least 5 weeks may be necessary).

Concomitant use of tricyclic antidepressants with drugs that can inhibit cytochrome P450 2D6 may require lower doses than usually prescribed for either the tricyclic antidepressant or the other drug. Furthermore, whenever one of these other drugs is withdrawn from co-therapy, an increased dose of tricyclic antidepressant may be required. It is desirable to monitor TCA plasma levels whenever a TCA is going to be co-administered with another drug known to be an inhibitor of P450 2D6.

**Carcinogenesis, Mutagenesis, Impairment of Fertility**  
Semen studies in man (four schizophrenics and nine normal volunteers) revealed no significant changes in sperm morphology. It is recognized that drugs having a parasympathetic effect, including tricyclic antidepressants, may alter the ejaculatory response.

Chronic animal studies showed occasional evidence of degeneration of seminiferous tubules at the highest dose of 60 mg/kg/day.

**Pregnancy**  
**Teratogenic Effects—Pregnancy Category C**  
Surmontil has shown evidence of embryotoxicity and/or increased incidence of major

### Medication Guide Antidepressant Medicines, Depression and other Serious Mental Illnesses, and Suicidal Thoughts or Actions

Read the Medication Guide that comes with you or your family member's antidepressant medicine. This Medication Guide is only about the risk of suicidal thoughts and actions with antidepressant medicines. **Talk to your, or your family member's, healthcare provider about:**

- all risks and benefits of treatment with antidepressant medicines
- all treatment choices for depression or other serious mental illness

**What is the most important information I should know about antidepressant medicines, depression and other serious mental illnesses, and suicidal thoughts or actions?**

**1. Antidepressant medicines may increase suicidal thoughts or actions in some children, teenagers, and young adults within the first few months of treatment.**

**2. Depression and other serious mental illnesses are the most important causes of suicidal thoughts and actions. Some people may have a particularly high risk of having suicidal thoughts or actions. These include people who have (or have a family history of) bipolar illness (also called manic-depressive illness) or suicidal thoughts or actions.**

**3. How can I watch for and try to prevent suicidal thoughts and actions in myself or a family member?**

- Pay close attention to any changes, especially sudden changes, in mood, behaviors, thoughts, or feelings. This is very important when an antidepressant medicine is started or when the dose is changed.

- Call the healthcare provider right away to report new or sudden changes in mood, behavior, thoughts, or feelings.

- Keep all follow-up visits with the healthcare provider as scheduled. Call the healthcare provider between visits as needed, especially if you have concerns about symptoms.

**Call a healthcare provider right away if you or your family member has any of the following symptoms, especially if they are new, worse, or worry you:**

- thoughts about suicide or dying
- attempts to commit suicide
- new or worse depression
- new or worse anxiety
- feeling very agitated or restless
- panic attacks
- trouble sleeping (insomnia)

### Medication Guide Antidepressant Medicines, Depression and other Serious Mental Illnesses, and Suicidal Thoughts or Actions

Read the Medication Guide that comes with you or your family member's antidepressant medicine. This Medication Guide is only about the risk of suicidal thoughts and actions with antidepressant medicines. **Talk to your, or your family member's, healthcare provider about:**

- all risks and benefits of treatment with antidepressant medicines
- all treatment choices for depression or other serious mental illness

**What is the most important information I should know about antidepressant medicines, depression and other serious mental illnesses, and suicidal thoughts or actions?**

**1. Antidepressant medicines may increase suicidal thoughts or actions in some children, teenagers, and young adults within the first few months of treatment.**

**2. Depression and other serious mental illnesses are the most important causes of suicidal thoughts and actions. Some people may have a particularly high risk of having suicidal thoughts or actions. These include people who have (or have a family history of) bipolar illness (also called manic-depressive illness) or suicidal thoughts or actions.**

**3. How can I watch for and try to prevent suicidal thoughts and actions in myself or a family member?**

- Pay close attention to any changes, especially sudden changes, in mood, behaviors, thoughts, or feelings. This is very important when an antidepressant medicine is started or when the dose is changed.

- Call the healthcare provider right away to report new or sudden changes in mood, behavior, thoughts, or feelings.

- Keep all follow-up visits with the healthcare provider as scheduled. Call the healthcare provider between visits as needed, especially if you have concerns about symptoms.

**Call a healthcare provider right away if you or your family member has any of the following symptoms, especially if they are new, worse, or worry you:**

- thoughts about suicide or dying
- attempts to commit suicide
- new or worse depression
- new or worse anxiety
- feeling very agitated or restless
- panic attacks
- trouble sleeping (insomnia)

### Medication Guide Antidepressant Medicines, Depression and other Serious Mental Illnesses, and Suicidal Thoughts or Actions

Read the Medication Guide that comes with you or your family member's antidepressant medicine. This Medication Guide is only about the risk of suicidal thoughts and actions with antidepressant medicines. **Talk to your, or your family member's, healthcare provider about:**

- all risks and benefits of treatment with antidepressant medicines
- all treatment choices for depression or other serious mental illness

**What is the most important information I should know about antidepressant medicines, depression and other serious mental illnesses, and suicidal thoughts or actions?**

**1. Antidepressant medicines may increase suicidal thoughts or actions in some children, teenagers, and young adults within the first few months of treatment.**

**2. Depression and other serious mental illnesses are the most important causes of suicidal thoughts and actions. Some people may have a particularly high risk of having suicidal thoughts or actions. These include people who have (or have a family history of) bipolar illness (also called manic-depressive illness) or suicidal thoughts or actions.**

**3. How can I watch for and try to prevent suicidal thoughts and actions in myself or a family member?**

- Pay close attention to any changes, especially sudden changes, in mood, behaviors, thoughts, or feelings. This is very important when an antidepressant medicine is started or when the dose is changed.

- Call the healthcare provider right away to report new or sudden changes in mood, behavior, thoughts, or feelings.

- Keep all follow-up visits with the healthcare provider as scheduled. Call the healthcare provider between visits as needed, especially if you have concerns about symptoms.

**Call a healthcare provider right away if you or your family member has any of the following symptoms, especially if they are new, worse, or worry you:**

- thoughts about suicide or dying
- attempts to commit suicide
- new or worse depression
- new or worse anxiety
- feeling very agitated or restless
- panic attacks
- trouble sleeping (insomnia)

- new or worse irritability
- acting aggressive, being angry, or violent
- acting on dangerous impulses
- an extreme increase in activity and talking (mania)
- other unusual changes in behavior or mood

**What else do I need to know about antidepressant medicines?**

- **Never stop an antidepressant medicine without first talking to a healthcare provider.** Stopping an antidepressant medicine suddenly can cause other symptoms.

- **Antidepressants are medicines used to treat depression and other illnesses.** It is important to discuss all the risks of treating depression and also the risks of not treating it. Patients and their families or other caregivers should discuss all treatment choices with the healthcare provider, not just the use of antidepressants.

- **Antidepressant medicines have other side effects.** Talk to the healthcare provider about the side effects of the medicine prescribed for you or your family member.

- **Antidepressant medicines can interact with other medicines.** Know all of the medicines that you or your family member takes. Keep a list of all medicines to show the healthcare provider. Do not start new medicines without first checking with your healthcare provider.

- **Not all antidepressant medicines prescribed for children are FDA approved for use in children.** Talk to your child's healthcare provider for more information.

This Medication Guide has been approved by the U.S. Food and Drug Administration for all antidepressants.

DURAMED PHARMACEUTICALS, INC.  
Subsidiary of Barr Pharmaceuticals, Inc.  
Pomona, New York 10970

B08-0718 Rev. 6/07

- new or worse irritability
- acting aggressive, being angry, or violent
- acting on dangerous impulses
- an extreme increase in activity and talking (mania)
- other unusual changes in behavior or mood

**What else do I need to know about antidepressant medicines?**

- **Never stop an antidepressant medicine without first talking to a healthcare provider.** Stopping an antidepressant medicine suddenly can cause other symptoms.

- **Antidepressants are medicines used to treat depression and other illnesses.** It is important to discuss all the risks of treating depression and also the risks of not treating it. Patients and their families or other caregivers should discuss all treatment choices with the healthcare provider, not just the use of antidepressants.

- **Antidepressant medicines have other side effects.** Talk to the healthcare provider about the side effects of the medicine prescribed for you or your family member.

- **Antidepressant medicines can interact with other medicines.** Know all of the medicines that you or your family member takes. Keep a list of all medicines to show the healthcare provider. Do not start new medicines without first checking with your healthcare provider.

- **Not all antidepressant medicines prescribed for children are FDA approved for use in children.** Talk to your child's healthcare provider for more information.

This Medication Guide has been approved by the U.S. Food and Drug Administration for all antidepressants.

DURAMED PHARMACEUTICALS, INC.  
Subsidiary of Barr Pharmaceuticals, Inc.  
Pomona, New York 10970

B08-0718 Rev. 6/07

- new or worse irritability
- acting aggressive, being angry, or violent
- acting on dangerous impulses
- an extreme increase in activity and talking (mania)
- other unusual changes in behavior or mood

**What else do I need to know about antidepressant medicines?**

- **Never stop an antidepressant medicine without first talking to a healthcare provider.** Stopping an antidepressant medicine suddenly can cause other symptoms.

- **Antidepressants are medicines used to treat depression and other illnesses.** It is important to discuss all the risks of treating depression and also the risks of not treating it. Patients and their families or other caregivers should discuss all treatment choices with the healthcare provider, not just the use of antidepressants.

- **Antidepressant medicines have other side effects.** Talk to the healthcare provider about the side effects of the medicine prescribed for you or your family member.

- **Antidepressant medicines can interact with other medicines.** Know all of the medicines that you or your family member takes. Keep a list of all medicines to show the healthcare provider. Do not start new medicines without first checking with your healthcare provider.

- **Not all antidepressant medicines prescribed for children are FDA approved for use in children.** Talk to your child's healthcare provider for more information.

This Medication Guide has been approved by the U.S. Food and Drug Administration for all antidepressants.

DURAMED PHARMACEUTICALS, INC.  
Subsidiary of Barr Pharmaceuticals, Inc.  
Pomona, New York 10970

B08-0718 Rev. 6/07

anomalies in rats or rabbits at doses 20 times the human dose. There are no adequate and well-controlled studies in pregnant women. Surmontil should be used during pregnancy only if the potential benefit justifies the potential risk to the fetus.

**Pediatric Use**  
Safety and effectiveness in the pediatric population have not been established (see BOX WARNING and WARNINGS—Clinical Worsening and Suicide Risk). Anyone considering the use of Surmontil in a child or adolescent must balance the potential risks with the clinical need.

**Geriatric Use**  
Clinical studies of Surmontil® (trimipramine maleate) were not adequate to determine whether subjects aged 65 and over respond differently from younger subjects.

The pharmacokinetics of trimipramine were not substantially altered in the elderly (see CLINICAL PHARMACOLOGY).

Surmontil is known to be substantially excreted by the kidney. Clinical circumstances, some of which may be more common in the elderly, such as hepatic or renal impairment, should be considered (see PRECAUTIONS — General).

Greater sensitivity (e.g., confusional states, sedation) of some older individuals cannot be ruled out (see ADVERSE REACTIONS). In general, dose selection for an elderly patient should be cautious, usually starting at a lower dose (see DOSAGE AND ADMINISTRATION).

**ADVERSE REACTIONS**  
Note: The pharmacological similarities among the tricyclic antidepressants require that each of the reactions be considered when Surmontil is administered. Some of the adverse reactions included in this listing have not in fact been reported with Surmontil.

**Cardiovascular**  
Hypotension, hypertension, tachycardia, palpitation, myocardial infarction, arrhythmias, heart block, stroke.

**Psychiatric**  
Confusional states (especially the elderly) with hallucinations, disorientation, delusions; anxiety, restlessness, agitation; insomnia and nightmares; hypomania; exacerbation of psychosis.

**Neurological**  
Numbness, tingling, paresthesias of extremities; incoordination, ataxia, tremors; peripheral neuropathy; extrapyramidal symptoms; seizures, alterations in EEG patterns; tinnitus; syndrome of inappropriate ADH (antidiuretic hormone) secretion.

**Anticholinergic**  
Dry mouth and, rarely, associated sublingual adenitis; blurred vision, disturbances of accommodation, mydriasis, constipation, paralytic ileus; urinary retention, delayed micturition, dilation of the urinary tract.

**Allergic**  
Skin rash, petechiae, urticaria, itching, photosensitization, edema of face and tongue.

**Hematologic**  
Bone-marrow depression including agranulocytosis, eosinophilia; purpura; thrombocytopenia. Leukocyte and differential counts should be performed in any patient who develops fever and sore throat during therapy; the drug should be discontinued if there is evidence of pathological neutrophil depression.

**Gastrointestinal**  
Nausea and vomiting, anorexia, epigastric distress, diarrhea, peculiar taste, stomatitis, abdominal cramps, black tongue.

**Endocrine**  
Gynecomastia in the male; breast enlargement and galactorrhea in the female; increased or decreased libido, impotence; testicular swelling; elevation or depression of blood-sugar levels.

**Other**  
Jaundice (simulating obstructive); altered liver function; weight gain or loss; perspiration; flushing; urinary frequency; drowsiness, dizziness, weakness, and fatigue; headache; parotid swelling; alopecia.

**Withdrawal Symptoms**  
Though not indicative of addiction, abrupt cessation of treatment after prolonged therapy may produce nausea, headache, and malaise.

**DOSAGE AND ADMINISTRATION**  
Dosage should be initiated at a low level and increased gradually, noting carefully the clinical response and any evidence of intolerance.

Lower dosages are recommended for elderly patients and adolescents. Lower dosages are also recommended for outpatients as compared to hospitalized patients who will be under close supervision. It is not possible to prescribe a single dosage schedule of Surmontil that will be therapeutically effective in all patients. The physical psychodynamic factors contributing to depressive symptomatology are very complex; spontaneous remissions or exacerbations of depressive symptoms may occur with or without drug therapy. Consequently, the recommended dosage regimens are furnished as a guide which may be modified by factors such as the age of the patient, chronicity and severity of the disease, medical condition of the patient, and degree of psychotherapeutic support. Most antidepressant drugs have a lag period of ten days to four weeks before a therapeutic response is noted. Increasing the dose will not shorten this period but rather increase the incidence of adverse reactions.

**Usual Adult Dose**  
*Outpatients and Office Patients*—Initially, 75 mg/day in divided doses, increased to 150 mg/day. Dosages over 200 mg/day are not recommended. Maintenance therapy is in the range of 50 to 150 mg/day. For convenient therapy and to facilitate patient compliance, the total dosage requirement may be given at bedtime.  
*Hospitalized Patients*—Initially, 100 mg/day in divided doses. This may be increased gradually in a few days to 200 mg/day, depending upon individual response and tolerance. If improvement does not occur in 2 to 3 weeks, the dose may be increased to the maximum recommended dose of 250 to 300 mg/day.

*Adolescent and Geriatric Patients*—Initially, a dose of 50 mg/day is recommended, with gradual increments up to 100 mg/day, depending upon patient response and tolerance.

**Maintenance**—Following remission, maintenance medication may be required for a longer period of time, at the lowest dose that will maintain remission. Maintenance therapy is preferably administered as a single dose at bedtime. To minimize relapse, maintenance therapy should be continued for about three months.

**OVERDOSAGE\***  
Deaths may occur from overdosage with this class of drugs. Multiple drug ingestion (including alcohol) is common in deliberate tricyclic antidepressant overdose. As the management is complex and changing, it is recommended that the physician contact a poison control center for current information on treatment. Signs and symptoms of toxicity develop rapidly after tricyclic antidepressant overdose, therefore, hospital monitoring is required as soon as possible.

**Manifestations**  
Critical manifestations of overdose include: cardiac dysrhythmias, severe hypotension, convulsions, and CNS depression, including coma. Changes in the electrocardiogram, particularly in QRS axis or width, are clinically significant indicators of tricyclic antidepressant toxicity.

Other signs of overdose may include: confusion, disturbed concentration, transient visual hallucinations, dilated pupils, agitation, hyperactive reflexes, stupor, drowsiness, muscle rigidity, vomiting, hypothermia, hyperpyrexia, or any of the symptoms listed under ADVERSE REACTIONS.

**Management**  
*General*  
Obtain an ECG and immediately initiate cardiac monitoring. Protect the patient's airway, establish an intravenous line and initiate gastric decontamination. A minimum of six hours of observation with cardiac monitoring and observation for signs of CNS or respiratory depression, hypotension, cardiac dysrhythmias and/or conduction blocks, and seizures is necessary. If signs of toxicity occur at any time during this period, extended monitoring is required. There are case reports of patients succumbing to fatal dysrhythmias late after overdose; these patients had clinical evidence of significant poisoning prior to death and most received inadequate gastrointestinal decontamination. Plasma drug levels may not reflect the severity of the poisoning. Therefore, monitoring of plasma drug levels alone should not guide management of the patient.

**Gastrointestinal Decontamination**  
All patients suspected of tricyclic antidepressant overdose should receive gastrointestinal decontamination. This should include large volume gastric lavage followed by activated charcoal. If consciousness is impaired, the airway should be secured prior to lavage. Emesis is contraindicated.

**Cardiovascular**  
A maximal limb-lead QRS duration of  $\geq 0.10$  seconds has been associated with an increased incidence of seizures. A QRS duration of  $\geq 0.16$  seconds has been associated with an increased incidence of ventricular dysrhythmias. Intravenous sodium bicarbonate should be used to maintain the serum pH in the range of 7.45 to 7.55. If the pH response is inadequate, hyperventilation may also be used. Concomitant use of hyperventilation

and sodium bicarbonate should be done with extreme caution, with frequent pH monitoring. A pH  $> 7.60$  or a  $pCO_2 < 20$  mm Hg is undesirable. Dysrhythmias unresponsive to sodium bicarbonate therapy/hyperventilation may respond to lidocaine, bretylium or phenytoin. Type 1A and 1C antiarrhythmics are generally contraindicated (e.g., quinidine, disopyramide, and procainamide).

In rare instances, hemoperfusion may be beneficial in acute refractory cardiovascular instability in patients with acute toxicity. However, hemodialysis, peritoneal dialysis, exchange transfusions, and forced diuresis generally have been reported as ineffective in tricyclic antidepressant poisoning.

**CNS**  
In patients with CNS depression, early intubation is advised because of the potential for abrupt deterioration. Seizures should be controlled with benzodiazepines, or if these are ineffective, other anticonvulsants (e.g., phenobarbital, phenytoin). Physostigmine is not recommended except to treat life-threatening symptoms that have been unresponsive to other therapies, and then only in consultation with a poison control center.

**Psychiatric Follow-up**  
Since overdosage is often deliberate, patients may attempt suicide by other means during the recovery phase. Psychiatric referral may be appropriate.

**Pediatric Management**  
The principles of management of child and adult overdosages are similar. It is strongly recommended that the physician contact the local poison control center for specific pediatric treatment.

\*Poindex® Toxicologic Management. Topic: Antidepressants, Tricyclic Micromedex Inc. Vol. 85.

**HOW SUPPLIED**  
Surmontil® (trimipramine maleate) Capsules  
25 mg — Opaque blue and yellow capsule in bottles of 100.  
Printed OP and 718  
50 mg — Opaque blue and orange capsule in bottles of 100.  
Printed OP and 719.  
100 mg — Opaque blue and white capsule in bottles of 100.  
Printed OP and 720  
**Store at 20°-25°C (68°-77°F) [See USP Controlled Room Temperature].**  
**Keep bottles tightly closed.**  
**Dispense in a tight container.**

**Medication Guide**  
**Antidepressant Medicines, Depression and other Serious Mental Illnesses, and Suicidal Thoughts or Actions**

Read the Medication Guide that comes with you or your family member's antidepressant medicine. This Medication Guide is only about the risk of suicidal thoughts and actions with antidepressant medicines. **Talk to your, or your family member's, healthcare provider about:**

- all risks and benefits of treatment with antidepressant medicines
- all treatment choices for depression or other serious mental illness

**What is the most important information I should know about antidepressant medicines, depression and other serious mental illnesses, and suicidal thoughts or actions?**

**1. Antidepressant medicines may increase suicidal thoughts or actions in some children, teenagers, and young adults within the first few months of treatment.**

**2. Depression and other serious mental illnesses are the most important causes of suicidal thoughts and actions. Some people may have a particularly high risk of having suicidal thoughts or actions.** These include people who have (or have a family history of) bipolar illness (also called manic-depressive illness) or suicidal thoughts or actions.

**3. How can I watch for and try to prevent suicidal thoughts and actions in myself or a family member?**

- Pay close attention to any changes, especially sudden changes, in mood, behaviors, thoughts, or feelings. This is very important when an antidepressant medicine is started or when the dose is changed.

- Call the healthcare provider right away to report new or sudden changes in mood, behavior, thoughts, or feelings.

- Keep all follow-up visits with the healthcare provider as scheduled. Call the healthcare provider between visits as needed, especially if you have concerns about symptoms.

**Call a healthcare provider right away if you or your family member has any of the following symptoms, especially if they are new, worse, or worry you:**

- thoughts about suicide or dying
- attempts to commit suicide
- new or worse depression
- new or worse anxiety
- feeling very agitated or restless
- panic attacks
- trouble sleeping (insomnia)
- new or worse irritability
- acting aggressive, being angry, or violent
- acting on dangerous impulses
- an extreme increase in activity and talking (mania)
- other unusual changes in behavior or mood

**What else do I need to know about antidepressant medicines?**

• **Never stop an antidepressant medicine without first talking to a healthcare provider.** Stopping an antidepressant medicine suddenly can cause other symptoms.

• **Antidepressants are medicines used to treat depression and other illnesses.** It is important to discuss all the risks of treating depression and also the risks of not treating it. Patients and their families or other caregivers should discuss all treatment choices with the healthcare provider, not just the use of antidepressants.

• **Antidepressant medicines have other side effects.** Talk to the healthcare provider about the side effects of the medicine prescribed for you or your family member.

• **Antidepressant medicines can interact with other medicines.** Know all of the medicines that you or your family member takes. Keep a list of all medicines to show the healthcare provider. Do not start new medicines without first checking with your healthcare provider.

• **Not all antidepressant medicines prescribed for children are FDA approved for use in children.** Talk to your child's healthcare provider for more information.

This Medication Guide has been approved by the U.S. Food and Drug Administration for all antidepressants.

DURAMED PHARMACEUTICALS, INC.  
Subsidiary of Barr Pharmaceuticals, Inc.  
Pomona, New York 10970  
Revised JUNE 2007  
Br-718, 719, 720

B08-0718  
c/n.1



B080718



(This Medication Guide Applies to All)

Revised JUNE 2007  
11001244  
B-  
DURAMED