

# LO/OVRAL-28\* AND FERROUS FUMARATE Tablets

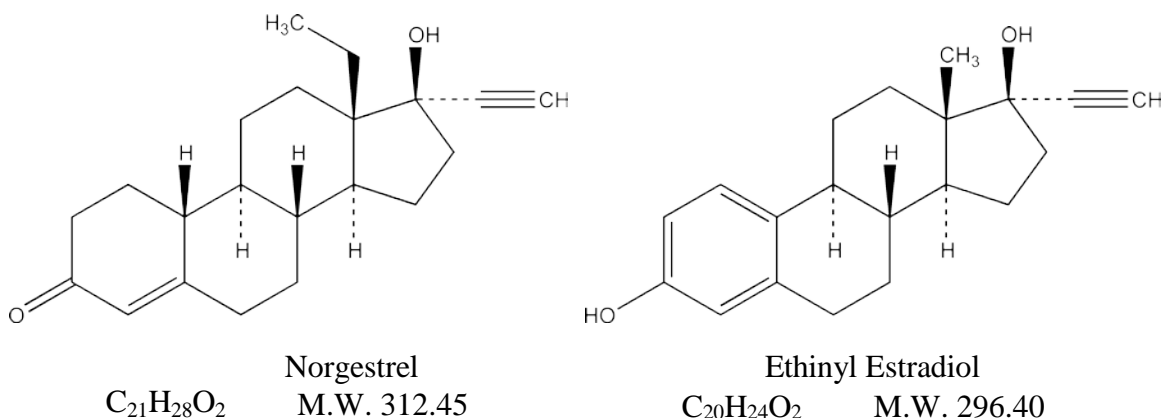
(NORGESTREL AND ETHINYL ESTRADIOL TABLETS AND FERROUS FUMARATE TABLETS)

**Rx only**

**Patients should be counseled that oral contraceptives do not protect against transmission of HIV (AIDS) and other sexually transmitted diseases (STDs) such as chlamydia, genital herpes, genital warts, gonorrhea, hepatitis B, and syphilis.**

## DESCRIPTION

21 white Lo/Ovral-28 tablets, each containing 0.3 mg of norgestrel (18, 19-Dinorpregn-4-en-20-yn-3-one, 13-ethyl-17-hydroxy-, (17 $\alpha$ )-(±)-), a totally synthetic progestogen, and 0.03 mg of ethinyl estradiol (19-Norpregna-1,3,5(10)-trien-20-yne-3,17-diol, (17 $\alpha$ -), and 7 brown tablets, each containing 75 mg ferrous fumarate. The inactive ingredients present are cellulose, lactose, magnesium stearate, methylcellulose, polacrillin potassium, and starch.



## CLINICAL PHARMACOLOGY

### Mode of Action

Combination oral contraceptives (COC) act by suppression of gonadotropins. Although the primary mechanism of this action is inhibition of ovulation, other alterations include changes in the cervical mucus (which increase the difficulty of sperm entry into the uterus) and the endometrium (which reduce the likelihood of implantation).

## INDICATIONS AND USAGE

Oral contraceptives are indicated for the prevention of pregnancy in women who elect to use this product as a method of contraception.

Oral contraceptives are highly effective. Table I lists the typical accidental pregnancy rates for users of combination oral contraceptives and other methods of contraception. The efficacy of these contraceptive methods, except sterilization, the IUD, and implants depends upon the reliability with which they are used. Correct and consistent use of methods can result in lower failure rates.

Table I: Percentage Of Women Experiencing An Unintended Pregnancy During The First Year Of Typical Use And The First Year Of Perfect Use Of Contraception And The Percentage Continuing Use At The End Of The First Year. United States.

Method (1)	% of Women Experiencing an Unintended Pregnancy within the First Year of Use		% of Women Continuing Use at One Year <sup>3</sup>
	Typical Use <sup>1</sup> (2)	Perfect Use <sup>2</sup> (3)	(4)
Chance <sup>4</sup>	85	85	
Spermicides <sup>5</sup>	26	6	40
Periodic abstinence	25		63
Calendar		9	
Ovulation Method		3	
Sympto-Thermal <sup>6</sup>		2	
Post-Ovulation		1	
Cap <sup>7</sup>			
Parous Women	40	26	42
Nulliparous Women	20	9	56
Sponge			
Parous Women	40	20	42
Nulliparous Women	20	9	56
Diaphragm <sup>7</sup>	20	6	56
Withdrawal	19	4	
Condom <sup>8</sup>			
Female (Reality)	21	5	56
Male	14	3	61
Pill	5		71
Progestin only		0.5	
Combined		0.1	
IUD			
Progesterone T	2.0	1.5	81
Copper T380A	0.8	0.6	78
LNg 20	0.1	0.1	81
Depo-Provera*	0.3	0.3	70
Levonorgestrel Implants (Norplant*)	0.05	0.05	88
Female Sterilization	0.5	0.5	100
Male Sterilization	0.15	0.10	100

Lactation Amenorrhhea Method: LAM is a highly effective, temporary method of contraception.<sup>9</sup>

Source: Trussell J. Contraceptive efficacy. In: Hatcher RA, Trussell J, Stewart F, Cates W, Stewart GK, Kowal D, Guest F. Contraceptive Technology: Seventeenth Revised Edition. New York NY: Irvington Publishers; 1998.

1. Among *typical* couples who initiate use of a method (not necessarily for the first time), the percentage who experience an accidental pregnancy during the first year if they do not stop use for any other reason.

2. Among couples who initiate use of a method (not necessarily for the first time) and who use it *perfectly* (both consistently and correctly), the percentage who experience an accidental pregnancy during the first year if they do not stop use for any other reason.
3. Among couples attempting to avoid pregnancy, the percentage who continue to use a method for one year.
4. The percents becoming pregnant in columns (2) and (3) are based on data from populations where contraception is not used and from women who cease using contraception in order to become pregnant. Among such populations, about 89% become pregnant within one year. This estimate was lowered slightly (to 85%) to represent the percent who would become pregnant within one year among women now relying on reversible methods of contraception if they abandoned contraception altogether.
5. Foams, creams, gels, vaginal suppositories, and vaginal film.
6. Cervical mucus (ovulation) method supplemented by calendar in the pre-ovulatory and basal body temperature in the post-ovulatory phases.
7. With spermicidal cream or jelly.
8. Without spermicides.
9. However, to maintain effective protection against pregnancy, another method of contraception must be used as soon as menstruation resumes, the frequency or duration of breastfeeds is reduced, bottle feeds are introduced, or the baby reaches 6 months of age.

## **CONTRAINDICATIONS**

Combination oral contraceptives should not be used in women with any of the following conditions:

Thrombophlebitis or thromboembolic disorders

A past history of deep-vein thrombophlebitis or thromboembolic disorders

Cerebral-vascular or coronary-artery disease (current or history)

Thrombogenic valvulopathies

Thrombogenic rhythm disorders

Major surgery with prolonged immobilization

Diabetes with vascular involvement

Headaches with focal neurological symptoms

Uncontrolled hypertension

Known or suspected carcinoma of the breast or personal history of breast cancer

Carcinoma of the endometrium or other known or suspected estrogen-dependent neoplasia

Undiagnosed abnormal genital bleeding

Cholestatic jaundice of pregnancy or jaundice with prior pill use

Hepatic adenomas or carcinomas, or active liver disease, as long as liver function has not returned to normal

Known or suspected pregnancy

Hypersensitivity to any of the components of Lo/Ovral-28 and ferrous fumarate

Are receiving Hepatitis C drug combinations containing ombitasvir/paritaprevir/ritonavir, with or without dasabuvir, due to the potential for ALT elevations (see **WARNINGS, RISK OF LIVER ENZYME ELEVATIONS WITH CONCOMITANT HEPATITIS C TREATMENT**).

In addition, the hormone-free tablets containing ferrous fumarate should not be used in women with iron storage disorders such as:

Hemochromatosis

Hemosiderosis

## WARNINGS

**Cigarette smoking increases the risk of serious cardiovascular side effects from oral-contraceptive use. This risk increases with age and with the extent of smoking (in epidemiologic studies, 15 or more cigarettes per day was associated with a significantly increased risk) and is quite marked in women over 35 years of age. Women who use oral contraceptives should be strongly advised not to smoke.**

The use of oral contraceptives is associated with increased risks of several serious conditions including venous and arterial thrombotic and thromboembolic events (such as myocardial infarction, thromboembolism, and stroke), hepatic neoplasia, gallbladder disease, and hypertension, although the risk of serious morbidity or mortality is very small in healthy women without underlying risk factors. The risk of morbidity and mortality increases significantly in the presence of other underlying risk factors such as certain inherited or acquired thrombophilias, hypertension, hyperlipidemias, obesity, diabetes, and surgery or trauma with increased risk of thrombosis.

Practitioners prescribing oral contraceptives should be familiar with the following information relating to these risks.

The information contained in this package insert is based principally on studies carried out in patients who used oral contraceptives with higher doses of estrogens and progestogens than those in common use today. The effect of long-term use of the oral contraceptives with lower doses of both estrogens and progestogens remains to be determined.

Throughout this labeling, epidemiological studies reported are of two types: retrospective or case control studies and prospective or cohort studies. Case control studies provide a measure of the relative risk of disease, namely, a ratio of the incidence of a disease among oral-contraceptive users to that among nonusers. The relative risk does not provide information on the actual clinical occurrence of a disease. Cohort studies provide a measure of attributable risk, which is the difference in the incidence of disease between oral-contraceptive users and nonusers. The attributable risk does provide information about the actual occurrence of a disease in the population. For further information, the reader is referred to a text on epidemiological methods.

### 1. Thromboembolic Disorders And Other Vascular Problems

#### a. *Myocardial infarction*

An increased risk of myocardial infarction has been attributed to oral-contraceptive use. This risk is primarily in smokers or women with other underlying risk factors for coronary-artery disease such as hypertension, hypercholesterolemia, morbid obesity, and diabetes. The relative risk of heart attack for current oral-contraceptive users has been estimated to be two to six. The risk is very low under the age of 30.

Smoking in combination with oral-contraceptive use has been shown to contribute substantially to the incidence of myocardial infarctions in women in their mid-thirties or older with smoking accounting for the majority of excess cases. Mortality rates associated with circulatory disease have been shown to increase substantially in smokers over the age of 35 and nonsmokers over the age of 40 (Table II) among women who use oral contraceptives.

CIRCULATORY DISEASE MORTALITY RATES PER 100,000 WOMAN  
YEARS BY AGE, SMOKING STATUS AND ORAL-CONTRACEPTIVE USE

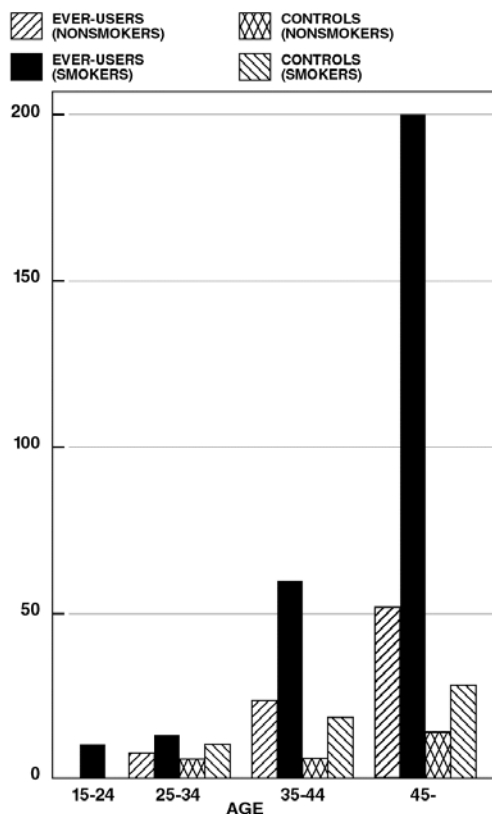


TABLE II. (Adapted from P.M. Layde and V. Beral, Lancet, 1:541-546, 1981.)

Oral contraceptives may compound the effects of well-known risk factors, such as hypertension, diabetes, hyperlipidemias, age, and obesity. In particular, some progestogens are known to decrease HDL cholesterol and cause glucose intolerance, while estrogens may create a state of hyperinsulinism. Oral contraceptives have been shown to increase blood pressure among users (see [section 10 in WARNINGS](#)). Similar effects on risk factors have been associated with an increased risk of heart disease. Oral contraceptives must be used with caution in women with cardiovascular disease risk factors.

b. *Venous thrombosis and thromboembolism*

An increased risk of venous thromboembolic and thrombotic disease associated with the use of oral contraceptives is well established. Case control studies have found the relative risk of users compared to nonusers to be 3 for the first episode of superficial venous thrombosis, 4 to 11 for deep-vein thrombosis or pulmonary embolism, and 1.5 to 6 for women with predisposing conditions for venous thromboembolic disease. Cohort studies have shown the relative risk to be somewhat lower, about 3 for new cases and about 4.5 for new cases requiring hospitalization. The approximate incidence of deep-vein thrombosis and pulmonary embolism in users of low dose (<50 mcg ethinyl estradiol) combination oral contraceptives is up to 4 per 10,000 woman-years compared to 0.5-3 per 10,000 woman-years for non-users. However, the incidence is substantially less than that associated with pregnancy (6 per 10,000 woman-years).

The excess risk is highest during the first year a woman ever uses a combined oral contraceptive. Venous thromboembolism may be fatal. The risk of venous thrombotic and thromboembolic events is further increased in women with conditions predisposing for venous thrombosis and thromboembolism. The risk of thromboembolic disease due to oral contraceptives is not related to length of use and gradually disappears after pill use is stopped.

A two- to four-fold increase in relative risk of postoperative thromboembolic complications has been reported with the use of oral contraceptives. The relative risk of venous thrombosis in women who have predisposing conditions is twice that of women without such medical conditions. If feasible, oral contraceptives should be discontinued at least four weeks prior to and for two weeks after elective surgery of a type associated with an increase in risk of thromboembolism and during and following prolonged immobilization. Since the immediate postpartum period is also associated with an increased risk of thromboembolism, oral contraceptives should be started no earlier than four weeks after delivery in women who elect not to breast-feed, or a midtrimester pregnancy termination.

*c. Cerebrovascular diseases*

Oral contraceptives have been shown to increase both the relative and attributable risks of cerebrovascular events (thrombotic and hemorrhagic strokes), although, in general, the risk is greatest among older (>35 years), hypertensive women who also smoke. Hypertension was found to be a risk factor for both users and nonusers, for both types of strokes, while smoking interacted to increase the risk for hemorrhagic strokes.

In a large study, the relative risk of thrombotic strokes has been shown to range from 3 for normotensive users to 14 for users with severe hypertension. The relative risk of hemorrhagic stroke is reported to be 1.2 for nonsmokers who used oral contraceptives, 2.6 for smokers who did not use oral contraceptives, 7.6 for smokers who used oral contraceptives, 1.8 for normotensive users, and 25.7 for users with severe hypertension. The attributable risk is also greater in older women. Oral contraceptives also increase the risk for stroke in women with other underlying risk factors such as certain inherited or acquired thrombophilias, hyperlipidemias, and obesity.

Women with migraine (particularly migraine/headaches with focal neurological symptoms, see **CONTRAINDICATIONS**) who take combination oral contraceptives may be at an increased risk of stroke.

*d. Dose-related risk of vascular disease from oral contraceptives*

A positive association has been observed between the amount of estrogen and progestogen in oral contraceptives and the risk of vascular disease. A decline in serum high-density lipoproteins (HDL) has been reported with many progestational agents. A decline in serum high-density lipoproteins has been associated with an increased incidence of ischemic heart disease. Because estrogens increase HDL cholesterol, the net effect of an oral contraceptive depends on a balance achieved between doses of estrogen and progestogen and the nature and absolute amount of progestogen used in the contraceptive. The amount of both hormones should be considered in the choice of an oral contraceptive.

Minimizing exposure to estrogen and progestogen is in keeping with good principles of therapeutics. For any particular estrogen/progestogen combination, the dosage regimen prescribed should be one which contains the least amount of estrogen and progestogen that is compatible with a low failure rate and the needs of the individual patient. New acceptors of oral-contraceptive agents should be started on preparations containing the lowest estrogen content which is judged appropriate for the individual patient.

*e. Persistence of risk of vascular disease*

There are two studies which have shown persistence of risk of vascular disease for ever-users of oral contraceptives. In a study in the United States, the risk of developing myocardial infarction after discontinuing oral contraceptives persists for at least 9 years for women 40 to 49 years who had used oral contraceptives for five or more years, but this increased risk was not demonstrated in other age groups. In another study in Great Britain, the risk of developing cerebrovascular disease persisted for at least 6 years after discontinuation of oral contraceptives, although excess risk was very small. However, both studies were performed with oral-contraceptive formulations containing 50 mcg or higher of estrogen.

## **2. Estimates of Mortality from Contraceptive Use**

One study gathered data from a variety of sources which have estimated the mortality rate associated with different methods of contraception at different ages (Table III). These estimates include the combined risk of death associated with contraceptive methods plus the risk attributable to pregnancy in the event of method failure. Each method of contraception has its specific benefits and risks. The study concluded that with the exception of oral-contraceptive users 35 and older who smoke and 40 and older who do not smoke, mortality associated with all methods of birth control is less than that associated with childbirth. The observation of a possible increase in risk of mortality with age for oral-contraceptive users is based on data gathered in the 1970's—but not reported until 1983. However, current clinical practice involves the use of lower estrogen dose formulations combined with careful restriction of oral-contraceptive use to women who do not have the various risk factors listed in this labeling.

Because of these changes in practice and, also, because of some limited new data which suggest that the risk of cardiovascular disease with the use of oral contraceptives may now be less than previously observed, the Fertility and Maternal Health Drugs Advisory Committee was asked to review the topic in 1989. The Committee concluded that although cardiovascular-disease risks may be increased with oral-contraceptive use after age 40 in healthy nonsmoking women (even with the newer low-dose formulations), there are greater potential health risks associated with pregnancy in older women and with the alternative surgical and medical procedures which may be necessary if such women do not have access to effective and acceptable means of contraception.

Therefore, the Committee recommended that the benefits of oral-contraceptive use by healthy nonsmoking women over 40 may outweigh the possible risks. Of course, older women, as all women who take oral contraceptives, should take the lowest possible dose formulation that is effective.

TABLE III—ANNUAL NUMBER OF BIRTH-RELATED OR METHOD-RELATED DEATHS ASSOCIATED WITH CONTROL OF FERTILITY PER 100,000 NONSTERILE WOMEN, BY FERTILITY-CONTROL METHOD AND ACCORDING TO AGE

Method of control and outcome	15-19	20-24	25-29	30-34	35-39	40-44
No fertility-control methods*	7.0	7.4	9.1	14.8	25.7	28.2
Oral contraceptives nonsmoker**	0.3	0.5	0.9	1.9	13.8	31.6
Oral contraceptives smoker**	2.2	3.4	6.6	13.5	51.1	117.2
IUD**	0.8	0.8	1.0	1.0	1.4	1.4
Condom*	1.1	1.6	0.7	0.2	0.3	0.4
Diaphragm/spermicide*	1.9	1.2	1.2	1.3	2.2	2.8
Periodic abstinence*	2.5	1.6	1.6	1.7	2.9	3.6

\*Deaths are birth related

\*\*Deaths are method related

Adapted from H.W. Ory, *Family Planning Perspectives*, 15:57-63, 1983.

### 3. Carcinoma of the Reproductive Organs and Breasts

Numerous epidemiological studies have examined the association between the use of oral contraceptives and the incidence of breast and cervical cancer.

The risk of having breast cancer diagnosed may be slightly increased among current and recent users of COCs. However, this excess risk appears to decrease over time after COC discontinuation and by 10 years after cessation the increased risk disappears. Some studies report an increased risk with duration of use while other studies do not and no consistent relationships have been found with dose or type of steroid. Some studies have reported a small increase in risk for women who first use COCs at a younger age. Most studies show a similar pattern of risk with COC use regardless of a woman's reproductive history or her family breast cancer history.

Breast cancers diagnosed in current or previous OC users tend to be less clinically advanced than in nonusers.

Women with known or suspected carcinoma of the breast or personal history of breast cancer should not use oral contraceptives because breast cancer is usually a hormonally-sensitive tumor.

Some studies suggest that oral-contraceptive use has been associated with an increase in the risk of cervical intraepithelial neoplasia or invasive cervical cancer in some populations of women. However, there continues to be controversy about the extent to which such findings may be due to differences in sexual behavior and other factors.

In spite of many studies of the relationship between combination oral-contraceptive use and breast and cervical cancers, a cause-and-effect relationship has not been established.

#### **4. Hepatic Neoplasia**

Benign hepatic adenomas are associated with oral-contraceptive use, although the incidence of benign tumors is rare in the United States. Indirect calculations have estimated the attributable risk to be in the range of 3.3 cases/100,000 for users, a risk that increases after four or more years of use. Rupture of rare, benign, hepatic adenomas may cause death through intra-abdominal hemorrhage.

Studies from Britain have shown an increased risk of developing hepatocellular carcinoma in long-term (>8 years) oral-contraceptive users.

However, these cancers are extremely rare in the U.S., and the attributable risk (the excess incidence) of liver cancers in oral-contraceptive users approaches less than one per million users.

#### **5. Risk of Liver Enzyme Elevations with Concomitant Hepatitis C Treatment**

During clinical trials with the Hepatitis C combination drug regimen that contains ombitasvir/paritaprevir/ritonavir, with or without dasabuvir, ALT elevations greater than 5 times the upper limit of normal (ULN), including some cases greater than 20 times the ULN, were significantly more frequent in women using ethinyl estradiol-containing medications such as COCs. Discontinue Lo/Ovral-28 prior to starting therapy with the combination drug regimen ombitasvir/paritaprevir/ritonavir, with or without dasabuvir [see **CONTRAINDICATIONS**]. Lo/Ovral-28 can be restarted approximately 2 weeks following completion of treatment with the combination drug regimen.

#### **6. Ocular Lesions**

There have been clinical case reports of retinal thrombosis associated with the use of oral contraceptives that may lead to partial or complete loss of vision. Oral contraceptives should be discontinued if there is unexplained partial or complete loss of vision; onset of proptosis or diplopia; papilledema; or retinal vascular lesions. Appropriate diagnostic and therapeutic measures should be undertaken immediately.

#### **7. Oral-Contraceptive Use Before or During Early Pregnancy**

Extensive epidemiological studies have revealed no increased risk of birth defects in infants born to women who have used oral contraceptives prior to pregnancy. Studies also do not suggest a teratogenic effect, particularly insofar as cardiac anomalies and limb-reduction defects are concerned, when taken inadvertently during early pregnancy (see **CONTRAINDICATIONS** section).

The administration of oral contraceptives to induce withdrawal bleeding should not be used as a test for pregnancy. Oral contraceptives should not be used during pregnancy to treat threatened or habitual abortion.

It is recommended that for any patient who has missed two consecutive periods, pregnancy should be ruled out before continuing oral-contraceptive use. If the patient has not adhered to the prescribed schedule, the possibility of pregnancy should be considered at the time of the first missed period. Oral-contraceptive use should be discontinued if pregnancy is confirmed.

#### **8. Gallbladder Disease**

Combination oral contraceptives may worsen existing gallbladder disease and may accelerate the

development of this disease in previously asymptomatic women. Earlier studies have reported an increased lifetime relative risk of gallbladder surgery in users of oral contraceptives and estrogens. More recent studies, however, have shown that the relative risk of developing gallbladder disease among oral-contraceptive users may be minimal. The recent findings of minimal risk may be related to the use of oral-contraceptive formulations containing lower hormonal doses of estrogens and progestogens.

### **9. Carbohydrate and Lipid Metabolic Effects**

Oral contraceptives have been shown to cause glucose intolerance in a significant percentage of users. Oral contraceptives containing greater than 75 mcg of estrogens cause hyperinsulinism, while lower doses of estrogen cause less glucose intolerance. Progestogens increase insulin secretion and create insulin resistance, this effect varying with different progestational agents. However, in the nondiabetic woman, oral contraceptives appear to have no effect on fasting blood glucose. Because of these demonstrated effects, prediabetic and diabetic women should be carefully observed while taking oral contraceptives.

A small proportion of women will have persistent hypertriglyceridemia while on the pill. As discussed earlier (see **WARNINGS**, 1a. and 1d.; **PRECAUTIONS**, 3.), changes in serum triglycerides and lipoprotein levels have been reported in oral-contraceptive users.

### **10. Elevated Blood Pressure**

Women with uncontrolled hypertension should not be started on hormonal contraception. An increase in blood pressure has been reported in women taking oral contraceptives, and this increase is more likely in older oral-contraceptive users and with continued use. Data from the Royal College of General Practitioners and subsequent randomized trials have shown that the incidence of hypertension increases with increasing quantities of progestogens.

Women with a history of hypertension or hypertension-related diseases, or renal disease, should be encouraged to use another method of contraception. If women with hypertension elect to use oral contraceptives, they should be monitored closely, and if significant elevation of blood pressure occurs, oral contraceptives should be discontinued (see **CONTRAINDICATIONS** section). For most women, elevated blood pressure will return to normal after stopping oral contraceptives, and there is no difference in the occurrence of hypertension among ever- and never-users.

### **11. Headache**

The onset or exacerbation of migraine or development of headache with a new pattern that is recurrent, persistent, or severe requires discontinuation of oral contraceptives and evaluation of the cause. (See **WARNINGS**, 1c. and **CONTRAINDICATIONS**.)

### **12. Bleeding Irregularities**

Breakthrough bleeding and spotting are sometimes encountered in patients on oral contraceptives, especially during the first three months of use. The type and dose of progestogen may be important. If bleeding persists or recurs, nonhormonal causes should be considered and adequate diagnostic measures taken to rule out malignancy or pregnancy in the event of breakthrough bleeding, as in the case of any abnormal vaginal bleeding. If pathology has been excluded, time or a change to another formulation may solve the problem. In some women withdrawal bleeding may not occur during the iron-containing tablet (hormone-free) interval. If

the COC has not been taken according to directions prior to the first missed withdrawal bleed, or if two consecutive withdrawal bleeds are missed, tablet-taking should be discontinued and a nonhormonal method of contraception should be used until the possibility of pregnancy is excluded.

Some women may encounter post-pill amenorrhea or oligomenorrhea (possibly with anovulation), especially when such a condition was pre-existent.

### **13. Ectopic Pregnancy**

Ectopic as well as intrauterine pregnancy may occur in contraceptive failures.

## **PRECAUTIONS**

### **1. General**

**Patients should be counseled that oral contraceptives do not protect against transmission of HIV (AIDS) and other sexually transmitted diseases (STDs) such as chlamydia, genital herpes, genital warts, gonorrhea, hepatitis B, and syphilis.**

### **2. Physical Examination and Follow-Up**

A periodic personal and family medical history and complete physical examination are appropriate for all women, including women using oral contraceptives. The physical examination, however, may be deferred until after initiation of oral contraceptives if requested by the woman and judged appropriate by the clinician. The physical examination should include special reference to blood pressure, breasts, abdomen and pelvic organs, including cervical cytology, and relevant laboratory tests. In case of undiagnosed, persistent or recurrent abnormal vaginal bleeding, appropriate diagnostic measures should be conducted to rule out malignancy. Women with a strong family history of breast cancer or who have breast nodules should be monitored with particular care.

### **3. Lipid Disorders**

Women who are being treated for hyperlipidemias should be followed closely if they elect to use oral contraceptives. Some progestogens may elevate LDL levels and may render the control of hyperlipidemias more difficult. (See **WARNINGS**, 1a., 1d., and 9.)

In patients with defects of lipoprotein metabolism, estrogen-containing preparations may be associated with rare but significant elevations of plasma triglycerides which may lead to pancreatitis.

### **4. Liver Function**

If jaundice develops in any woman receiving hormonal contraceptives, the medication should be discontinued. Steroid hormones may be poorly metabolized in patients with impaired liver function.

### **5. Fluid Retention**

Oral contraceptives may cause some degree of fluid retention. They should be prescribed with caution, and only with careful monitoring, in patients with conditions which might be aggravated by fluid retention.

### **6. Emotional Disorders**

Patients becoming significantly depressed while taking oral contraceptives should stop the medication and use an alternate method of contraception in an attempt to determine whether the

symptom is drug-related. Women with a history of depression should be carefully observed and the drug discontinued if significant depression occurs.

## 7. Contact Lenses

Contact-lens wearers who develop visual changes or changes in lens tolerance should be assessed by an ophthalmologist.

## 8. Gastrointestinal

Diarrhea and/or vomiting may reduce hormone absorption resulting in decreased serum concentrations.

## 9. Drug Interactions

### *Changes in contraceptive effectiveness associated with coadministration of other products:*

Contraceptive effectiveness may be reduced when hormonal contraceptives are coadministered with antibiotics, anticonvulsants, and other drugs that increase the metabolism of contraceptive steroids. This could result in unintended pregnancy or breakthrough bleeding. Examples include rifampin, rifabutin, barbiturates, primidone, phenylbutazone, phenytoin, dexamethasone, carbamazepine, felbamate, oxcarbazepine, topiramate, griseofulvin, and modafinil.

Several cases of contraceptive failure and breakthrough bleeding have been reported in the literature with concomitant administration of antibiotics such as ampicillin and other penicillins, and tetracyclines, possibly due to a decrease of enterohepatic recirculation of estrogens. However, clinical pharmacology studies investigating drug interactions between combined oral contraceptives and these antibiotics have reported inconsistent results. Enterohepatic recirculation of estrogens may also be decreased by substances that reduce gut transit time.

Several of the anti-HIV protease inhibitors have been studied with coadministration of oral combination hormonal contraceptives; significant changes (increase and decrease) in the plasma levels of the estrogen and progestin have been noted in some cases. The safety and efficacy of oral contraceptive products may be affected with coadministration of anti-HIV protease inhibitors. Health-care professionals should refer to the label of the individual anti-HIV protease inhibitors for further drug-drug interaction information.

### *Concomitant use with HCV combination therapy – Liver enzyme elevation:*

Do not co-administer Lo/Ovral-28 with HCV drug combinations containing ombitasvir/paritaprevir/ritonavir, with or without dasabuvir, due to potential for ALT elevations (see **WARNINGS, RISK OF LIVER ENZYME ELEVATIONS WITH CONCOMITANT HEPATITIS C TREATMENT**).

Herbal products containing St. John's Wort (*Hypericum perforatum*) may induce hepatic enzymes (cytochrome P 450) and p-glycoprotein transporter and may reduce the effectiveness of contraceptive steroids. This may also result in breakthrough bleeding.

During concomitant use of ethinyl estradiol containing products and substances that may lead to decreased plasma steroid hormone concentrations, it is recommended that a nonhormonal back-up method of birth control be used in addition to the regular intake of Lo/Ovral-28 and ferrous fumarate. If the use of a substance which leads to decreased ethinyl estradiol plasma

concentrations is required for a prolonged period of time, combination oral contraceptives should not be considered the primary contraceptive.

After discontinuation of substances that may lead to decreased ethinyl estradiol plasma concentrations, use of a nonhormonal back-up method of birth control is recommended for 7 days. Longer use of a back-up method is advisable after discontinuation of substances that have led to induction of hepatic microsomal enzymes, resulting in decreased ethinyl estradiol

*Increase in plasma levels associated with coadministered drugs:*

Coadministration of atorvastatin and certain oral contraceptives containing ethinyl estradiol increase AUC values for ethinyl estradiol by approximately 20%. The mechanism of this interaction is unknown. Ascorbic acid and acetaminophen increase the bioavailability of ethinyl estradiol since these drugs act as competitive inhibitors for sulfation of ethinyl estradiol in the gastrointestinal wall, a known pathway of elimination for ethinyl estradiol. CYP 3A4 inhibitors such as indinavir, itraconazole, ketoconazole, fluconazole, and troleandomycin may increase plasma hormone levels. Troleandomycin may also increase the risk of intrahepatic cholestasis during coadministration with combination oral contraceptives.

*Changes in plasma levels of coadministered drugs:*

Combination hormonal contraceptives containing some synthetic estrogens (eg, ethinyl estradiol) may inhibit the metabolism of other compounds. Increased plasma concentrations of cyclosporin, prednisolone and other corticosteroids, and theophylline have been reported with concomitant administration of oral contraceptives. Decreased plasma concentrations of acetaminophen and increased clearance of temazepam, salicylic acid, morphine, and clofibrac acid, due to induction of conjugation (particularly glucuronidation), have been noted when these drugs were administered with oral contraceptives.

The prescribing information of concomitant medications should be consulted to identify potential interactions.

## **10. Interactions With Laboratory Tests**

Certain endocrine- and liver-function tests and blood components may be affected by oral contraceptives:

- a. Increased prothrombin and factors VII, VIII, IX, and X; decreased antithrombin 3; increased norepinephrine-induced platelet aggregability.
- b. Increased thyroid-binding globulin (TBG) leading to increased circulating total thyroid hormone, as measured by protein-bound iodine (PBI), T<sub>4</sub> by column or by radioimmunoassay. Free T<sub>3</sub> resin uptake is decreased, reflecting the elevated TBG; free T<sub>4</sub> concentration is unaltered.
- c. Other binding proteins may be elevated in serum ie, corticosteroid binding globulin (CBG), sex hormone-binding globulins (SHBG) leading to increased levels of total circulating corticosteroids and sex steroids respectively. Free or biologically active hormone concentrations are unchanged.
- d. Triglycerides may be increased and levels of various other lipids and lipoproteins may be affected.

- e. Glucose tolerance may be decreased.
- f. Serum folate levels may be depressed by oral-contraceptive therapy.

This may be of clinical significance if a woman becomes pregnant shortly after discontinuing oral contraceptives.

### **11. Carcinogenesis**

See **WARNINGS** section.

### **12. Pregnancy**

Pregnancy Category X. See **CONTRAINDICATIONS** and **WARNINGS** sections.

### **13. Nursing Mothers**

Small amounts of oral-contraceptive steroids and/or metabolites have been identified in the milk of nursing mothers, and a few adverse effects on the child have been reported, including jaundice and breast enlargement. In addition, combination oral contraceptives given in the postpartum period may interfere with lactation by decreasing the quantity and quality of breast milk. If possible, the nursing mother should be advised not to use combination oral contraceptives but to use other forms of contraception until she has completely weaned her child.

### **14. Fertility Following Discontinuation**

Users of combination oral contraceptives may experience some delay in becoming pregnant after discontinuation of COCs, especially those women who had irregular menstrual cycles prior to use. Conception may be delayed an average of 1-2 months among women stopping COCs compared to women stopping nonhormonal contraceptive methods.

Women who do not wish to become pregnant after discontinuation of COCs should be advised to use another method of birth control.

### **15. Pediatric Use**

Safety and efficacy of Lo/Ovral-28 tablets have been established in women of reproductive age. Safety and efficacy are expected to be the same for postpubertal adolescents under the age of 16 and for users 16 years and older. Use of this product before menarche is not indicated.

### **16. Geriatric Use**

This product has not been studied in women over 65 years of age and is not indicated in this population.

### **Information for the Patient**

See **Patient Labeling** Printed Below.

### **ADVERSE REACTIONS**

An increased risk of the following serious adverse reactions (see **WARNINGS** section for additional information) has been associated with the use of oral contraceptives:

Thromboembolic and thrombotic disorders and other vascular problems (including thrombophlebitis and venous thrombosis with or without pulmonary embolism, mesenteric

thrombosis, arterial thromboembolism, myocardial infarction, cerebral hemorrhage, cerebral thrombosis), carcinoma of the reproductive organs and breasts, hepatic neoplasia (including hepatic adenomas or benign liver tumors), ocular lesions (including retinal vascular thrombosis), gallbladder disease, carbohydrate and lipid effects, elevated blood pressure, and headache including migraine.

The following adverse reactions have been reported in patients receiving oral contraceptives and are believed to be drug-related (alphabetically listed):

Acne  
Amenorrhea  
Anaphylactic/anaphylactoid reactions, including urticaria, angioedema, and severe reactions with respiratory and circulatory symptoms  
Breakthrough bleeding  
Breast changes: tenderness, pain, enlargement, secretion  
Budd-Chiari syndrome  
Cervical erosion and secretion, change in  
Cholestatic jaundice  
Chorea, exacerbation of  
Colitis  
Corneal curvature (steepening), change in  
Diminution in lactation when given immediately postpartum  
Dizziness  
Edema/fluid retention  
Erythema multiforme  
Erythema nodosum  
Gastrointestinal symptoms (such as abdominal pain, cramps, and bloating)  
Hirsutism  
Intolerance to contact lenses  
Libido, changes in  
Loss of scalp hair  
Melasma/chloasma which may persist  
Menstrual flow, change in  
Mood changes, including depression  
Nausea  
Nervousness  
Pancreatitis  
Porphyria, exacerbation of  
Rash (allergic)  
Serum folate levels, decrease in  
Spotting  
Systemic lupus erythematosus, exacerbation of  
Temporary infertility after discontinuation of treatment  
Vaginitis, including candidiasis  
Varicose veins, aggravation of  
Vomiting  
Weight or appetite (increase or decrease), change in

The following adverse reactions have been reported in users of oral contraceptives:

Cataracts  
Cystitis-like syndrome  
Dysmenorrhea  
Hemolytic uremic syndrome  
Hemorrhagic eruption  
Optic neuritis, which may lead to partial or complete loss of vision  
Porphyria  
Premenstrual syndrome  
Renal function, impaired

The following adverse reactions have been reported in patients receiving iron (alphabetically listed):

Constipation  
Diarrhea  
Nausea  
Stool, darkening of  
Vomiting

### **OVERDOSAGE**

Symptoms of oral contraceptive overdose in adults and children may include nausea, vomiting, and drowsiness/fatigue; withdrawal bleeding may occur in females. There is no specific antidote and further treatment of overdose, if necessary, is directed to the symptoms.

Symptoms of acute iron overdose include vomiting and diarrhea. Accidental overdose of iron-containing products is a leading cause of fatal poisoning in children under 6. Keep this product out of the reach of children.

### **NONCONTRACEPTIVE HEALTH BENEFITS**

The following noncontraceptive health benefits related to the use of oral contraceptives are supported by epidemiological studies which largely utilized oral-contraceptive formulations containing doses exceeding 0.035 mg of ethinyl estradiol or 0.05 mg of mestranol.

Effects on menses:

Increased menstrual cycle regularity  
Decreased blood loss and decreased incidence of iron-deficiency anemia  
Decreased incidence of dysmenorrhea

Effects related to inhibition of ovulation:

Decreased incidence of functional ovarian cysts  
Decreased incidence of ectopic pregnancies

Effects from long-term use:

Decreased incidence of fibroadenomas and fibrocystic disease of the breast  
Decreased incidence of acute pelvic inflammatory disease  
Decreased incidence of endometrial cancer  
Decreased incidence of ovarian cancer

## **DOSAGE AND ADMINISTRATION**

To achieve maximum contraceptive effectiveness, Lo/Ovral-28 and ferrous fumarate must be taken exactly as directed and at intervals not exceeding 24 hours. The possibility of ovulation and conception prior to initiation of medication should be considered.

The dosage of Lo/Ovral-28 and ferrous fumarate is one white tablet daily for 21 consecutive days, followed by one brown tablet daily for 7 consecutive days, according to prescribed schedule. It is recommended that tablets be taken at the same time each day.

During the first cycle of medication, the patient is instructed to begin taking Lo/Ovral-28 and ferrous fumarate on the first Sunday after the onset of menstruation. If menstruation begins on a Sunday, the first tablet (white) is taken that day. One white tablet should be taken daily for 21 consecutive days followed by one brown tablet daily for 7 consecutive days. Withdrawal bleeding should usually occur within three days following discontinuation of white tablets and may not have finished before the next pack is started. During the first cycle, contraceptive reliance should not be placed on Lo/Ovral-28 and ferrous fumarate until a white tablet has been taken daily for 7 consecutive days and a nonhormonal back-up method of birth control should be used during those 7 days. The possibility of ovulation and conception prior to initiation of medication should be considered.

The patient begins her next and all subsequent 28-day courses of tablets on the same day of the week (Sunday) on which she began her first course, following the same schedule: 21 days on white tablets—7 days on brown tablets. If in any cycle the patient starts tablets later than the proper day, she should protect herself against pregnancy by using a nonhormonal back-up method of birth control until she has taken a white tablet daily for 7 consecutive days.

When the patient is switching from a 21-day regimen of tablets, she should wait 7 days after her last tablet before she starts Lo/Ovral-28 and ferrous fumarate. She will probably experience withdrawal bleeding during that week. She should be sure that no more than 7 days pass after her previous 21-day regimen. When the patient is switching from a 28-day regimen of tablets, she should start her first pack of Lo/Ovral-28 and ferrous fumarate on the day after her last tablet. She should not wait any days between packs. The patient may switch any day from a progestin-only pill and should begin Lo/Ovral-28 and ferrous fumarate the next day. If switching from an implant or injection, the patient should start Lo/Ovral-28 and ferrous fumarate on the day of implant removal or the day the next injection would be due. In switching from a progestin-only pill, injection, or implant, the patient should be advised to use a nonhormonal back-up method of birth control for the first 7 days of tablet-taking.

If spotting or breakthrough bleeding occurs, the patient is instructed to continue on the same regimen. This type of bleeding is usually transient and without significance; however, if the bleeding is persistent or prolonged, the patient is advised to consult her health-care professional. Although pregnancy is unlikely if Lo/Ovral-28 and ferrous fumarate is taken according to directions, if withdrawal bleeding does not occur, the possibility of pregnancy must be considered. If the patient has not adhered to the prescribed schedule (missed one or more tablets or started taking them on a day later than she should have), the probability of pregnancy should be considered at the time of the first missed period and appropriate diagnostic measures taken. If the patient has adhered to the prescribed regimen and misses two consecutive periods, pregnancy should be ruled out. Hormone contraception should be discontinued if pregnancy is confirmed.

For additional patient instructions regarding missed tablets, see the **WHAT TO DO IF YOU MISS PILLS** section in the **DETAILED PATIENT LABELING** below.

Any time the patient misses two or more white tablets, she should also use a nonhormonal method of contraception until she has taken a white tablet daily for seven consecutive days. If the patient misses one or more brown tablets, she is still protected against pregnancy **provided** she begins taking white tablets again on the proper day.

If breakthrough bleeding occurs following missed white tablets, it will usually be transient and of no consequence. The possibility of ovulation increases with each successive day that scheduled white tablets are missed.

Lo/Ovral-28 and ferrous fumarate may be initiated no earlier than day 28 postpartum in the nonlactating mother or after a second-trimester abortion due to the increased risk for thromboembolism (see **CONTRAINDICATIONS, WARNINGS, and PRECAUTIONS** concerning thromboembolic disease). The patient should be advised to use a nonhormonal back-up method for the first 7 days of tablet-taking. However, if intercourse has already occurred, pregnancy should be excluded before the start of combined oral contraceptive use or the patient must wait for her first menstrual period. In the case of first-trimester abortion, if the patient starts Lo/Ovral-28 and ferrous fumarate immediately, additional contraceptive measures are not needed.

#### **HOW SUPPLIED**

Lo/Ovral-28\* and Ferrous Fumarate Tablets (0.3 mg norgestrel and 0.03 mg ethinyl estradiol and 75 mg ferrous fumarate) are available in dispensing packets each containing 28 tablets as follows:

21 active tablets, white, round tablet marked “WYETH” and “78”.

7 iron-containing tablets, brown, round tablet.

**Store at controlled room temperature 20°C to 25°C (68°F to 77°F).**

**References available upon request.**

## Brief Summary Patient Package Insert

**This product (like all oral contraceptives) is intended to prevent pregnancy. Oral contraceptives do not protect against transmission of HIV (AIDS) and other sexually transmitted diseases (STDs) such as chlamydia, genital herpes, genital warts, gonorrhea, hepatitis B, and syphilis.**

Oral contraceptives, also known as “birth-control pills” or “the pill,” are taken to prevent pregnancy, and when taken correctly, have a failure rate of approximately 1% per year when taken without missing any pills. The average failure rate is approximately 5% per year when women who miss pills are included. For most women oral contraceptives are also free of serious or unpleasant side effects. However, forgetting to take pills considerably increases the chances of pregnancy.

For the majority of women, oral contraceptives can be taken safely. But there are some women who are at high risk of developing certain serious diseases that can be life-threatening or may cause temporary or permanent disability or death. The risks associated with taking oral contraceptives increase significantly if you:

- smoke
- have high blood pressure, diabetes, high cholesterol, a tendency to form blood clots, or are obese
- have or have had clotting disorders, heart attack, stroke, angina pectoris, cancer of the breast or sex organs, jaundice, malignant or benign liver tumors, or major surgery with prolonged immobilization
- have headaches with neurological symptoms

In addition, the hormone-free tablets containing iron should not be taken by women with iron storage disorders such as:

Hemochromatosis  
Hemosiderosis

You should not take the pill if you suspect you are pregnant or have unexplained vaginal bleeding.

**Cigarette smoking increases the risk of serious adverse effects on the heart and blood vessels from oral-contraceptive use. This risk increases with age and with the amount of smoking (15 or more cigarettes per day has been associated with a significantly increased risk) and is quite marked in women over 35 years of age. Women who use oral contraceptives should not smoke.**

Most side effects of the pill are not serious. The most common such effects are nausea, vomiting, bleeding between menstrual periods, weight gain, breast tenderness, and difficulty wearing contact lenses. These side effects, especially nausea and vomiting, may subside within the first three months of use.

The serious side effects of the pill occur very infrequently, especially if you are in good health and do not smoke. However, you should know that the following medical conditions have been associated with or made worse by the pill:

1. Blood clots in the legs (thrombophlebitis), lungs (pulmonary embolism), blockage or rupture of a blood vessel in the brain (stroke), blockage of blood vessels in the heart (heart attack and angina pectoris) or other organs of the body. As mentioned above, smoking increases the risk of heart attacks and strokes and subsequent serious medical consequences. Women with migraine also may be at increased risk of stroke with pill use.
2. Liver tumors, which may rupture and cause severe bleeding. A possible but not definite association has been found with the pill and liver cancer. However, liver cancers are extremely rare. The chance of developing liver cancer from using the pill is thus even rarer.
3. High blood pressure, although blood pressure usually returns to normal when the pill is stopped.

The symptoms associated with these serious side effects are discussed in the detailed leaflet given to you with your supply of pills. Notify your health-care professional if you notice any unusual physical disturbances while taking the pill. In addition, drugs such as rifampin, as well as some anticonvulsants and some antibiotics, herbal preparations containing St. John's Wort (*Hypericum perforatum*), and HIV/AIDS drugs may decrease oral-contraceptive effectiveness.

Various studies give conflicting reports on the relationship between breast cancer and oral-contraceptive use.

Oral-contraceptive use may slightly increase your chance of having breast cancer diagnosed, particularly if you started using hormonal contraceptives at a younger age.

After you stop using hormonal contraceptives, the chances of having breast cancer diagnosed begin to go down and disappear 10 years after stopping use of the pill. It is not known whether this slightly increased risk of having breast cancer diagnosed is caused by the pill. It may be that women taking the pill were examined more often, so that breast cancer was more likely to be detected.

You should have regular breast examinations by a health-care professional and examine your own breasts monthly. Tell your health-care professional if you have a family history of breast cancer or if you have had breast nodules or an abnormal mammogram. Women who currently have or have had breast cancer should not use oral contraceptives because breast cancer is usually a hormone-sensitive tumor.

Some studies have found an increase in the incidence of cancer of the cervix in women who use oral contraceptives. However, this finding may be related to factors other than the use of oral contraceptives. There is insufficient evidence to rule out the possibility that the pill may cause such cancers.

Taking the combination pill provides some important noncontraceptive health benefits. These include less painful menstruation, less menstrual blood loss and anemia, fewer pelvic infections, and fewer cancers of the ovary and the lining of the uterus.

Be sure to discuss any medical condition you may have with your health-care professional. Your health-care professional will take a medical and family history before prescribing oral contraceptives and will examine you. The physical examination may be delayed to another time if you request it and the health-care professional believes that it is appropriate to postpone it. You should be reexamined at least once a year while taking oral contraceptives. The detailed patient information leaflet gives you further information which you should read and discuss with your health-care professional.

**This product (like all oral contraceptives) is intended to prevent pregnancy. It does not protect against transmission of HIV (AIDS) and other sexually transmitted diseases such as chlamydia, genital herpes, genital warts, gonorrhea, hepatitis B, and syphilis.**

## **DETAILED PATIENT LABELING**

**This product (like all oral contraceptives) is intended to prevent pregnancy. Oral contraceptives do not protect against transmission of HIV (AIDS) and other sexually transmitted diseases (STDs) such as chlamydia, genital herpes, genital warts, gonorrhea, hepatitis B, and syphilis.**

## **INTRODUCTION**

Any woman who considers using oral contraceptives (the “birth-control pill” or “the pill”) should understand the benefits and risks of using this form of birth control. This leaflet will give you much of the information you will need to make this decision and will also help you determine if you are at risk of developing any of the serious side effects of the pill. It will tell you how to take the pill properly so that it will be as effective as possible. However, this leaflet is not a replacement for a careful discussion between you and your health-care professional. You should discuss the information provided in this leaflet with him or her, both when you first start taking the pill and during your revisits. You should also follow your health-care professional’s advice with regard to regular check-ups while you are on the pill.

## **EFFECTIVENESS OF ORAL CONTRACEPTIVES**

Oral contraceptives or “birth-control pills” or “the pill” are used to prevent pregnancy and are more effective than most other nonsurgical methods of birth control. When they are taken correctly without missing any pills, the chance of becoming pregnant is approximately 1% per year. Average failure rates are approximately 5% per year when women who miss pills are included. The chance of becoming pregnant increases with each missed pill during the menstrual cycle.

In comparison, average failure rates for other methods of birth control during the first year of use are as follows:

IUD: 0.1-2%	Female condom alone: 21%
Depo-Provera* (injectable progestogen): 0.3%	Cervical cap
Norplant* System (levonorgestrel implants): 0.05%	Never given birth: 20%
Diaphragm with spermicides: 20%	Given birth: 40%
Spermicides alone: 26%	Periodic abstinence: 25%
Male condom alone: 14%	No methods: 85%

#### WHO SHOULD NOT TAKE ORAL CONTRACEPTIVES

**Cigarette smoking increases the risk of serious adverse effects on the heart and blood vessels from oral-contraceptive use. This risk increases with age and with the amount of smoking (15 or more cigarettes per day has been associated with a significantly increased risk) and is quite marked in women over 35 years of age. Women who use oral contraceptives should not smoke.**

Some women should not take the pill. You should not take the pill if you have any of the following conditions:

- History of heart attack or stroke
- History of blood clots in the legs (thrombophlebitis), lungs (pulmonary embolism), or eyes
- History of blood clots in the deep veins of your legs
- Known or suspected breast cancer or cancer of the lining of the uterus, cervix, or vagina; or certain hormonally-sensitive cancers
- Liver tumor (benign or cancerous)
- Chest pain (angina pectoris)
- Unexplained vaginal bleeding (until a diagnosis is reached by your health-care professional)
- Yellowing of the whites of the eyes or of the skin (jaundice) during pregnancy or during previous use of the pill
- Known or suspected pregnancy
- Heart valve or heart rhythm disorders that may be associated with formation of blood clots
- Diabetes affecting your circulation
- Headaches with neurological symptoms
- Uncontrolled high blood pressure
- Active liver disease with abnormal liver function tests
- Take any Hepatitis C drug combination containing ombitasvir/paritaprevir/ritonavir, with or without dasabuvir. This may increase levels of the liver enzyme “alanine aminotransferase” (ALT) in the blood.
- Allergy or hypersensitivity to any of the components of Lo/Ovral-28 and ferrous fumarate
- A need for surgery with prolonged bedrest

In addition, the hormone-free tablets containing iron should not be taken if you have an iron storage disorder such as:

Hemochromatosis

## Hemosiderosis

Tell your health-care professional if you have any of these conditions. Your health-care professional can recommend another method of birth control.

### OTHER CONSIDERATIONS BEFORE TAKING ORAL CONTRACEPTIVES

Tell your health-care professional if you or any family member has ever had:

- Breast nodules, fibrocystic disease of the breast, an abnormal breast X-ray or mammogram
- Diabetes
- Elevated cholesterol or triglycerides
- High blood pressure
- A tendency to form blood clots
- Migraine or other headaches or epilepsy
- Depression
- Gallbladder, liver, heart, or kidney disease
- History of scanty or irregular menstrual periods

Women with any of these conditions should be checked often by their health-care professional if they choose to use oral contraceptives. Also, be sure to inform your health-care professional if you smoke or are on any medications.

### RISKS OF TAKING ORAL CONTRACEPTIVES

#### 1. *Risk of developing blood clots*

Blood clots and blockage of blood vessels are the most serious side effects of taking oral contraceptives and can cause death or serious disability. In particular, a clot in the legs can cause thrombophlebitis and a clot that travels to the lungs can cause a sudden blocking of the vessel carrying blood to the lungs. Rarely, clots occur in the blood vessels of the eye and may cause blindness, double vision, or impaired vision.

Users of COCs have a higher risk of developing blood clots compared to nonusers. This risk is highest during the first year of COC use.

If you take oral contraceptives and need elective surgery, need to stay in bed for a prolonged illness or injury, or have recently delivered a baby, you may be at risk of developing blood clots. You should consult your health-care professional about stopping oral contraceptives three to four weeks before surgery and not taking oral contraceptives for two weeks after surgery or during bedrest. You should also not take oral contraceptives soon after delivery of a baby or a midtrimester pregnancy termination. It is advisable to wait for at least four weeks after delivery if you are not breast-feeding. If you are breast-feeding, you should wait until you have weaned your child before using the pill. (See also the section on [breast-feeding in GENERAL PRECAUTIONS.](#))

#### 2. *Heart attacks and strokes*

Oral contraceptives may increase the tendency to develop strokes (blockage or rupture of blood vessels in the brain) and angina pectoris and heart attacks (blockage of blood vessels in the heart). Any of these conditions can cause death or serious disability.

Smoking greatly increases the possibility of suffering heart attacks and strokes. Furthermore, smoking and the use of oral contraceptives greatly increase the chances of developing and dying of heart disease.

Women with migraine (especially migraine/headache with neurological symptoms) who take oral contraceptives also may be at higher risk of stroke.

### 3. *Gallbladder disease*

Oral-contraceptive users probably have a greater risk than nonusers of having gallbladder disease. This risk may be related to pills containing high doses of estrogens. Oral contraceptives may worsen existing gallbladder disease or accelerate the development of gallbladder disease in women previously without symptoms.

### 4. *Liver tumors*

In rare cases, oral contraceptives can cause benign but dangerous liver tumors. These benign liver tumors can rupture and cause fatal internal bleeding. In addition, a possible but not definite association has been found with the pill and liver cancers in two studies in which a few women who developed these very rare cancers were found to have used oral contraceptives for long periods. However, liver cancers are extremely rare. The chance of developing liver cancer from using the pill is thus even rarer.

### 5. *Cancer of the reproductive organs and breasts*

Various studies give conflicting reports on the relationship between breast cancer and oral-contraceptive use.

Oral-contraceptive use may slightly increase your chance of having breast cancer diagnosed, particularly if you started using hormonal contraceptives at a younger age.

After you stop using hormonal contraceptives, the chances of having breast cancer diagnosed begin to go down and disappear 10 years after stopping use of the pill. It is not known whether this slightly increased risk of having breast cancer diagnosed is caused by the pill. It may be that women taking the pill were examined more often, so that breast cancer was more likely to be detected.

You should have regular breast examinations by a health-care professional and examine your own breasts monthly. Tell your health-care professional if you have a family history of breast cancer or if you have had breast nodules or an abnormal mammogram. Women who currently have or have had breast cancer should not use oral contraceptives because breast cancer is usually a hormone-sensitive tumor.

Some studies have found an increase in the incidence of cancer of the cervix in women who use oral contraceptives. However, this finding may be related to factors other than the use of oral contraceptives. There is insufficient evidence to rule out the possibility that the pill may cause such cancers.

### 6. Lipid metabolism and inflammation of the pancreas

In patients with abnormal lipid levels, there have been reports of significant increases in plasma triglycerides during estrogen therapy. This has led to inflammation of the pancreas in some cases.

### ESTIMATED RISK OF DEATH FROM A BIRTH-CONTROL METHOD OR PREGNANCY

All methods of birth control and pregnancy are associated with a risk of developing certain diseases which may lead to disability or death. An estimate of the number of deaths associated with different methods of birth control and pregnancy has been calculated and is shown in the following table.

ANNUAL NUMBER OF BIRTH-RELATED OR METHOD-RELATED DEATHS  
ASSOCIATED WITH CONTROL OF FERTILITY PER 100,000 NONSTERILE WOMEN, BY  
FERTILITY-CONTROL METHOD AND ACCORDING TO AGE

Method of control and outcome	15-19	20-24	25-29	30-34	35-39	40-44
No fertility-control methods*	7.0	7.4	9.1	14.8	25.7	28.2
Oral contraceptives nonsmoker**	0.3	0.5	0.9	1.9	13.8	31.6
Oral contraceptives smoker**	2.2	3.4	6.6	13.5	51.1	117.2
IUD**	0.8	0.8	1.0	1.0	1.4	1.4
Condom*	1.1	1.6	0.7	0.2	0.3	0.4
Diaphragm/spermicide*	1.9	1.2	1.2	1.3	2.2	2.8
Periodic abstinence*	2.5	1.6	1.6	1.7	2.9	3.6

\*Deaths are birth related

\*\*Deaths are method related

In the above table, the risk of death from any birth-control method is less than the risk of childbirth, except for oral-contraceptive users over the age of 35 who smoke and pill users over the age of 40 even if they do not smoke. It can be seen in the table that for women aged 15 to 39, the risk of death was highest with pregnancy (7 to 26 deaths per 100,000 women, depending on age). Among pill users who do not smoke, the risk of death was always lower than that associated with pregnancy for any age group, except for those women over the age of 40, when the risk increases to 32 deaths per 100,000 women, compared to 28 associated with pregnancy at that age. However, for pill users who smoke and are over the age of 35, the estimated number of deaths exceeds those for other methods of birth control. If a woman is over the age of 40 and smokes, her estimated risk of death is four times higher (117/100,000 women) than the estimated risk associated with pregnancy (28/100,000 women) in that age group.

The suggestion that women over 40 who do not smoke should not take oral contraceptives is based on information from older high-dose pills. An Advisory Committee of the FDA discussed this issue in 1989 and recommended that the benefits of oral-contraceptive use by healthy, nonsmoking women over 40 years of age may outweigh the possible risks. Older women, as all women who take oral contraceptives, should take an oral contraceptive which contains the least amount of estrogen and progesterone that is compatible with the individual patient needs.

## WARNING SIGNALS

If any of these adverse effects occur while you are taking oral contraceptives, call your health-care professional immediately:

- Sharp chest pain, coughing of blood, or sudden shortness of breath (indicating a possible clot in the lung)
- Pain in the calf (indicating a possible clot in the leg)
- Crushing chest pain or heaviness in the chest (indicating a possible heart attack)
- Sudden severe headache or vomiting, dizziness or fainting, disturbances of vision or speech, weakness, or numbness in an arm or leg (indicating a possible stroke)
- Sudden partial or complete loss of vision (indicating a possible clot in the eye)
- Breast lumps (indicating possible breast cancer or fibrocystic disease of the breast; ask your health-care professional to show you how to examine your breasts)
- Severe pain or tenderness in the stomach area (indicating a possibly ruptured liver tumor)
- Difficulty in sleeping, weakness, lack of energy, fatigue, or change in mood (possibly indicating severe depression)
- Jaundice or a yellowing of the skin or eyeballs, accompanied frequently by fever, fatigue, loss of appetite, dark-colored urine, or light-colored bowel movements (indicating possible liver problems)

## SIDE EFFECTS OF ORAL CONTRACEPTIVES

### 1. *Irregular vaginal bleeding*

Irregular vaginal bleeding or spotting may occur while you are taking the pills. Irregular bleeding may vary from slight staining between menstrual periods to breakthrough bleeding which is a flow much like a regular period. Irregular bleeding occurs most often during the first few months of oral-contraceptive use, but may also occur after you have been taking the pill for some time. Such bleeding may be temporary and usually does not indicate any serious problems. It is important to continue taking your pills on schedule. If the bleeding occurs in more than one cycle or lasts for more than a few days, talk to your health-care professional.

### 2. *Contact lenses*

If you wear contact lenses and notice a change in vision or an inability to wear your lenses, contact your health-care professional.

### 3. *Fluid retention*

Oral contraceptives may cause edema (fluid retention) with swelling of the fingers or ankles and may raise your blood pressure. If you experience fluid retention, contact your health-care professional.

#### 4. *Melasma*

A spotty darkening of the skin is possible, particularly of the face.

#### 5. *Other side effects*

Other side effects may include nausea, breast tenderness, change in appetite, headache, nervousness, depression, dizziness, loss of scalp hair, rash, vaginal infections, inflammation of the pancreas, and allergic reactions.

### SIDE EFFECTS OF IRON-CONTAINING TABLETS

Side effects of iron-containing tablets may include constipation, diarrhea, darkening of stools, nausea, and vomiting.

If any of these side effects bother you, call your health-care professional.

### GENERAL PRECAUTIONS

#### 1. *Missed periods and use of oral contraceptives before or during early pregnancy*

There may be times when you may not menstruate regularly after you have completed taking a cycle of pills. If you have taken your pills regularly and miss one menstrual period, continue taking your pills for the next cycle but be sure to inform your health-care professional. If you have not taken the pills daily as instructed and missed a menstrual period, or if you missed two consecutive menstrual periods, you may be pregnant. Check with your health-care professional immediately to determine whether you are pregnant. Stop taking oral contraceptives if pregnancy is confirmed.

There is no conclusive evidence that oral-contraceptive use is associated with an increase in birth defects when taken inadvertently during early pregnancy. Previously, a few studies had reported that oral contraceptives might be associated with birth defects, but these findings have not been confirmed in more recent studies. Nevertheless, oral contraceptives should not be used during pregnancy. You should check with your health-care professional about risks to your unborn child of any medication taken during pregnancy.

#### 2. *While breast-feeding*

If you are breast-feeding, consult your health-care professional before starting oral contraceptives. Some of the drug will be passed on to the child in the milk. A few adverse effects on the child have been reported, including yellowing of the skin (jaundice) and breast enlargement. In addition, oral contraceptives may decrease the amount and quality of your milk. If possible, do not use oral contraceptives while breast-feeding. You should use another method of contraception since breast-feeding provides only partial protection from becoming pregnant, and this partial protection decreases significantly as you breast-feed for longer periods of time. You should consider starting oral contraceptives only after you have weaned your child completely.

#### 3. *Laboratory tests*

If you are scheduled for any laboratory tests, tell your health-care professional you are taking birth-control pills. Certain blood tests may be affected by birth-control pills.

#### 4. *Drug interactions*

Certain drugs may interact with birth-control pills to make them less effective in preventing pregnancy or cause an increase in breakthrough bleeding. Such drugs include rifampin, drugs used for epilepsy such as barbiturates (for example, phenobarbital) and phenytoin (Dilantin\* is one brand of this drug), primidone (Mysoline\*), topiramate (Topamax\*), carbamazepine (Tegretol\* is one brand of this drug), phenylbutazone (Butazolidin\* is one brand of this drug), some drugs used for HIV or AIDS such as ritonavir (Norvir\*), modafinil (Provigil\*), possibly certain antibiotics (such as ampicillin and other penicillins, and tetracyclines), and herbal products containing St. John's Wort (*Hypericum perforatum*). You may also need to use a nonhormonal method of contraception (such as condoms and/or spermicide) during any cycle in which you take drugs that can make oral contraceptives less effective.

You may be at a higher risk of a specific type of liver dysfunction if you take troleandomycin and oral contraceptives at the same time.

Be sure to tell your health-care professional if you are taking or start taking any other medications, including nonprescription products or herbal products while taking birth control pills.

#### 5. *Sexually transmitted diseases*

**This product (like all oral contraceptives) is intended to prevent pregnancy. It does not protect against transmission of HIV (AIDS) and other sexually transmitted diseases such as chlamydia, genital herpes, genital warts, gonorrhea, hepatitis B, and syphilis.**

### **HOW TO TAKE THE PILL**

---

#### **IMPORTANT POINTS TO REMEMBER**

---

*BEFORE* YOU START TAKING YOUR PILLS:

1. BE SURE TO READ THESE DIRECTIONS:

Before you start taking your pills.

And

Anytime you are not sure what to do.

2. THE RIGHT WAY TO TAKE THE PILL IS TO TAKE ONE PILL EVERY DAY AT THE SAME TIME.

If you miss pills you could get pregnant. This includes starting the pack late. The more pills you miss, the more likely you are to get pregnant.

3. MANY WOMEN HAVE SPOTTING OR LIGHT BLEEDING, OR MAY FEEL SICK TO THEIR STOMACH DURING THE FIRST 1-3 PACKS OF PILLS.

If you feel sick to your stomach, do not stop taking the pill. The problem will usually go away. If it does not go away, check with your health-care professional.

4. MISSING PILLS CAN ALSO CAUSE SPOTTING OR LIGHT BLEEDING, even when you make up these missed pills.

On the days you take 2 pills to make up for missed pills, you could also feel a little sick to your stomach.

5. IF YOU HAVE VOMITING (within 4 hours after you take your pill), you should follow the instructions for [WHAT TO DO IF YOU MISS PILLS](#). IF YOU HAVE DIARRHEA, or IF YOU TAKE SOME MEDICINES, including some antibiotics, your pills may not work as well. Use a back-up nonhormonal method (such as condoms and/or spermicide) until you check with your health-care professional.

6. IF YOU HAVE TROUBLE REMEMBERING TO TAKE THE PILL, talk to your health-care professional about how to make pill-taking easier or about using another method of birth control.

7. IF YOU HAVE ANY QUESTIONS OR ARE UNSURE ABOUT THE INFORMATION IN THIS LEAFLET, call your health-care professional.

***LO/OVRAL-28\* AND FERROUS FUMARATE TABLETS (norgestrel and ethinyl estradiol tablets and ferrous fumarate).***

---

**BEFORE YOU START TAKING YOUR PILLS**

---

1. DECIDE WHAT TIME OF DAY YOU WANT TO TAKE YOUR PILL.

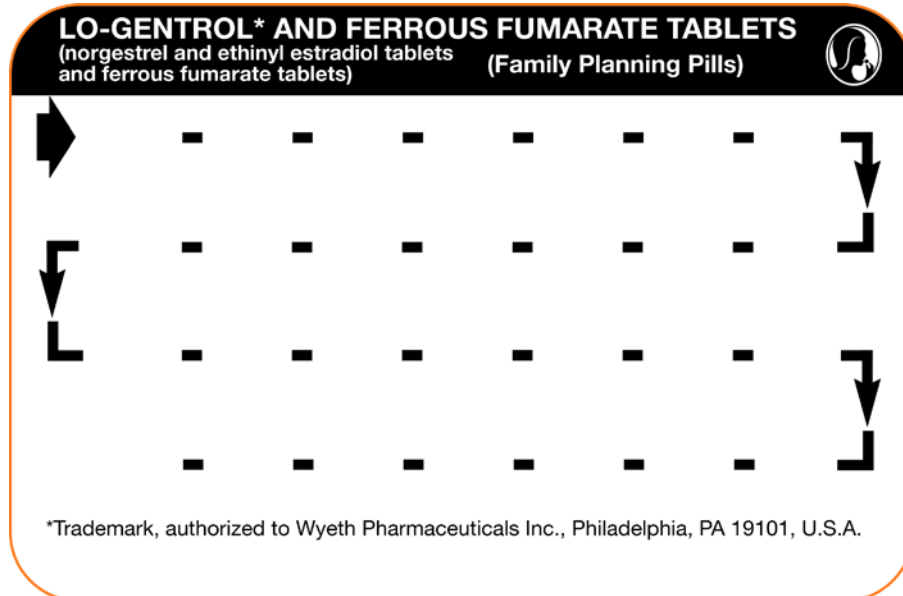
It is important to take it at about the same time every day.

2. LOOK AT YOUR PILL PACK TO SEE IF IT HAS 28 PILLS:

The pill pack has 21 “active” white pills (with hormones) to take for 3 weeks, followed by 1 week of brown iron-containing pills (without hormones).

3. FIND:

- 1) where on the pack to start taking pills (look for the white pill next to the large arrow)
- 2) in what order to take the pills (follow the arrows).



\*Lo-Gentrol was the international tradename for Lo/Ovral under NDA 18-206

4. BE SURE YOU HAVE READY AT ALL TIMES:

A NONHORMONAL KIND OF BIRTH CONTROL (such as condoms and/or spermicide) to use as a back-up in case you miss pills.

AN EXTRA, FULL PILL PACK.

---

**WHEN TO START THE *FIRST* PACK OF PILLS**

---

**SUNDAY START:**

1. Take the first “active” white pill of the first pack on the *Sunday after your period starts*, even if you are still bleeding. If your period begins on Sunday, start the pack that same day.
2. *Use a nonhormonal method of birth control* (such as condoms and/or spermicide) as a back-up method if you have sex anytime from the Sunday you start your first pack until the next Sunday (7 days).

---

## WHAT TO DO DURING THE MONTH

---

### 1. TAKE ONE PILL AT THE SAME TIME EVERY DAY UNTIL THE PACK IS EMPTY.

Do not skip pills even if you are spotting or bleeding between monthly periods or feel sick to your stomach (nausea).

Do not skip pills even if you do not have sex very often.

### 2. WHEN YOU FINISH A PACK:

Start the next pack on the day after your last iron-containing (without hormones) pill. Do not wait any days between packs.

### 3. IF YOU SWITCH FROM ANOTHER BRAND OF COMBINATION PILLS:

*When switching from a 21 pill pack:* Wait 7 days to start the next pack. You will probably have your period during that week. Be sure that no more than 7 days pass between 21-day packs.

*When switching from a 28 pill pack:* Start the next pack on the day after your last “reminder” pill. Do not wait any days between packs.

### 4. IF YOU SWITCH FROM ANOTHER TYPE OF BIRTH CONTROL

When switching from any of the following kinds of birth control: pills containing only a progestin (progestin only pill or POP); an injection; or an implant, your health-care professional will provide you with instructions for switching.

---

## WHAT TO DO IF YOU MISS PILLS

---

The pill may not be as effective if you miss white “active” pills, and particularly if you miss the first few or the last few white “active” pills in a pack.

If you **MISS 1** white “active” pill:

1. Take it as soon as you remember. Take the next pill at your regular time. This means you may take 2 pills in 1 day.
2. You **COULD BECOME PREGNANT** if you have sex in the *7 days* after you miss pills. You **MUST** use a nonhormonal birth-control method (such as condoms and/or spermicide) as a back-up for those 7 days.

If you **MISS 2** white “active” pills in a row in **WEEK 1 OR WEEK 2** of your pack:

1. Take 2 pills on the day you remember and 2 pills the next day.
2. Then take 1 pill a day until you finish the pack.
3. You **COULD BECOME PREGNANT** if you have sex in the *7 days* after you miss pills. You **MUST** use a nonhormonal birth-control method (such as condoms and/or spermicide) as a back-up for those 7 days.

If you **MISS 2** white “active” pills in a row in **THE 3rd WEEK**:

1. **THROW OUT** the rest of the pack and start a new pack of pills that same day.
2. You may not have your period this month but this is expected. However, if you miss your period 2 months in a row, call your health-care professional because you might be pregnant.
3. You **COULD BECOME PREGNANT** if you have sex in the *7 days* after you miss pills. You **MUST** use a nonhormonal birth-control method (such as condoms and/or spermicide) as a back-up for those 7 days.

If you **MISS 3 OR MORE** white “active” pills in a row (during the first 3 weeks):

1. **THROW OUT** the rest of the pack and start a new pack of pills that same day.
2. You may not have your period this month but this is expected. However, if you miss your period 2 months in a row, call your health-care professional because you might be pregnant.
3. You **COULD BECOME PREGNANT** if you have sex in the *7 days* after you miss pills. You **MUST** use a nonhormonal birth-control method (such as condoms and/or spermicide) as a back-up for those 7 days.

---

If you forget any of the 7 brown iron-containing (without hormones) pills in Week 4:

**THROW AWAY** the brown pills you missed.

Keep taking 1 brown pill each day until the pack is empty.

You do not need a back-up nonhormonal birth-control method if you start your next pack on time.

---

**FINALLY, IF YOU ARE STILL NOT SURE WHAT TO DO ABOUT THE PILLS YOU HAVE MISSED**

Use a **BACK-UP NONHORMONAL BIRTH-CONTROL METHOD** anytime you have sex.

**KEEP TAKING ONE PILL EACH DAY** until you can reach your health-care professional.

### PREGNANCY DUE TO PILL FAILURE

The incidence of pill failure resulting in pregnancy is approximately 1% if taken every day as directed, but the average failure rate is approximately 5% including women who do not always take the pill exactly as directed without missing any pills. If you do become pregnant, the risk to the fetus is minimal, but you should stop taking your pills and discuss the pregnancy with your health-care professional.

### PREGNANCY AFTER STOPPING THE PILL

There may be some delay in becoming pregnant after you stop using oral contraceptives, especially if you had irregular menstrual cycles before you used oral contraceptives. It may be advisable to postpone conception until you begin menstruating regularly once you have stopped taking the pill and desire pregnancy.

There does not appear to be any increase in birth defects in newborn babies when pregnancy occurs soon after stopping the pill.

If you do not desire pregnancy, you should use another method of birth control immediately after stopping the oral contraceptive pill.

### OVERDOSAGE

Overdosage may cause nausea, vomiting, and fatigue/drowsiness. Withdrawal bleeding may occur in females.

Symptoms of acute iron overdose include vomiting and diarrhea. Accidental overdose of iron-containing products is a leading cause of fatal poisoning in children under 6. Keep this product out of the reach of children.

In case of overdose, contact your health-care professional or poison control center immediately.

### OTHER INFORMATION

Your health-care professional will take a medical and family history before prescribing oral contraceptives and will examine you. The physical examination may be delayed to another time if you request it and the health-care professional believes that it is appropriate to postpone it.

You should be reexamined at least once a year. Be sure to inform your health-care professional if there is a family history of any of the conditions listed previously in this leaflet. Be sure to keep all appointments with your health-care professional, because this is a time to determine if there are early signs of side effects of oral-contraceptive use.

Do not use the drug for any condition other than the one for which it was prescribed. This drug has been prescribed specifically for you; do not give it to others who may want birth-control pills.

## HEALTH BENEFITS FROM ORAL CONTRACEPTIVES

In addition to preventing pregnancy, use of oral contraceptives may provide certain benefits.

They are:

- Menstrual cycles may become more regular.
- Blood flow during menstruation may be lighter, and less iron may be lost. Therefore, anemia due to iron deficiency is less likely to occur.
- Pain or other symptoms during menstruation may be encountered less frequently.
- Ovarian cysts may occur less frequently.
- Ectopic (tubal) pregnancy may occur less frequently.
- Noncancerous cysts or lumps in the breast may occur less frequently.
- Acute pelvic inflammatory disease may occur less frequently.
- Oral-contraceptive use may provide some protection against developing two forms of cancer: cancer of the ovaries and cancer of the lining of the uterus.

If you want more information about birth-control pills, ask your health-care professional or pharmacist. They have a more technical leaflet called the Professional Labeling which you may wish to read.

\*Trademark

All trademarks are the property of their respective owners.

# Wyeth\*

Wyeth Pharmaceuticals Inc.  
Philadelphia, PA 19101, U.S.A.  
Rev 08/2017