

HIGHLIGHTS OF PRESCRIBING INFORMATION

These highlights do not include all the information needed to use Transderm Scop® safely and effectively. See full prescribing information for Transderm Scop®.

Transderm Scop® (scopolamine) transdermal system patch
Initial U.S. Approval: 1979

INDICATIONS AND USAGE

Transderm Scop® is an anticholinergic agent indicated in adults for the prevention of nausea and vomiting associated with:

- Motion Sickness (1.1)
- Post Operative Nausea and Vomiting (PONV) (1.2)

DOSAGE AND ADMINISTRATION

DO NOT cut the patch. Apply ONE patch in the postauricular area to prevent:

Motion Sickness	<ul style="list-style-type: none"> • Apply 4 hrs before antiemetic effect is required—for use up to 3 days (2.1) • For use longer than 3 days, remove current patch and place new patch behind other ear (2.2)
Post Operative Nausea and Vomiting (PONV)	<ul style="list-style-type: none"> • Apply evening before scheduled surgery. (2.1) • For cesarean section, apply 1 hour prior to surgery (2.1) • Discard 24 hrs after surgery (2.2)

DOSAGE FORMS AND STRENGTHS

Continuous release, circular, flat, tan-colored patch imprinted with "Scopolamine 1 mg/3 days" (3)

CONTRAINDICATIONS

- Patients with angle closure glaucoma (4, 6.2)
- Persons who are hypersensitive to scopolamine or to other belladonna alkaloids (4, 7)

WARNINGS AND PRECAUTIONS

- Use with caution in patients with open angle glaucoma (5.1)
- Stop use if patient experiences symptoms of angle closure glaucoma (5.1, 6.2)
- Can cause temporary dilation and blurred vision if scopolamine contacts the eyes (5.2, 6, 16)

FULL PRESCRIBING INFORMATION: CONTENTS*

1 INDICATIONS AND USAGE

1.1 Motion Sickness

1.2 Post Operative Nausea and Vomiting (PONV)

2 DOSAGE AND ADMINISTRATION

2.1 Initiation of Therapy

2.2 Continuation of Therapy

3 DOSAGE FORMS AND STRENGTHS

4 CONTRAINDICATIONS

5 WARNINGS AND PRECAUTIONS

5.1 Open Angle Glaucoma

5.2 Temporary Dilation of the Pupil

5.3 Preexisting Gastrointestinal or Urinary Bladder Obstructions

5.4 History of Seizures or Psychosis

5.5 Idiosyncratic Reactions

5.6 Specific Populations

5.7 Safety Hazards

5.8 MRI Skin Burns

6 ADVERSE REACTIONS

6.1 Clinical Trials Experience

6.2 Postmarketing Experience

6.3 Drug Withdrawal/Post-Removal Symptoms

7 DRUG INTERACTIONS

7.1 Laboratory Test Interactions

- Use caution in patients with a history of seizures or psychosis (5.4)
- Use with caution in patients with pyloric obstruction, urinary bladder neck obstruction, or patients suspected of having intestinal obstruction (5.3)
- Stop use if patient has difficulty urinating (5.3, 6)
- Idiosyncratic reactions, such as confusion, agitation, speech disorder, hallucinations, paranoia and delusions, may occur with therapeutic doses of scopolamine (5.5, 6.2)
- A safe and effective dose has not been established in the pediatric population (5.6, 8.4)
- Use with caution in the elderly because of the increased likelihood of CNS effects, such as hallucinations, confusion and dizziness (5.6, 8.5)
- Should be used with caution in patients with impaired renal or hepatic function because of the increased likelihood of CNS effects (5.6, 8.5, 8.6)
- May cause drowsiness or disorienting effects, therefore patients should be cautioned against engaging in activities that require mental alertness, such as driving a motor vehicle or operating dangerous machinery (5.7)
- Skin burns have been reported in patients undergoing MRI testing (5.8)

ADVERSE REACTIONS

Most common adverse reactions during motion sickness clinical trials are dry mouth, drowsiness and blurred vision. (6.1)

Most common adverse reactions during PONV trials (greater than or equal to 3%) are dry mouth, dizziness, somnolence, urinary retention, agitation, visual impairment, confusion, mydriasis and pharyngitis. (6.1)

To report SUSPECTED ADVERSE REACTIONS, contact Sandoz Inc. at 1-800-398-5876 or FDA at 1-800-FDA-1088 or www.fda.gov/medwatch.

DRUG INTERACTIONS

- Absorption of oral medications may be decreased (7)
- Use with care while taking sedatives, tranquilizers or alcohol (7)
- Potential interactions with drugs having anticholinergic properties (7)
- Scopolamine interferes with the gastric secretion test (7.1)

USE IN SPECIFIC POPULATIONS

- Pregnancy: Based on animal data, may cause fetal harm (8.1)
- Nursing mothers: Caution should be exercised when administered to a nursing woman (8.3)

See 17 for PATIENT COUNSELING INFORMATION and FDA-approved patient labeling

Revised: 12/2016

8 USE IN SPECIFIC POPULATIONS

- 8.1 Pregnancy
- 8.2 Labor and Delivery
- 8.3 Nursing Mothers
- 8.4 Pediatric Use
- 8.5 Geriatric Use
- 8.6 Renal or Hepatic Impairment

9 DRUG ABUSE AND DEPENDENCE

- 9.1 Controlled Substance Class
- 9.2 Abuse
- 9.3 Dependence

10 OVERDOSAGE

11 DESCRIPTION

12 CLINICAL PHARMACOLOGY

- 12.1 Mechanism of Action
- 12.3 Pharmacokinetics

13 NONCLINICAL PHARMACOLOGY

- 13.1 Carcinogenesis, Mutagenesis, Impairment of Fertility

14 CLINICAL STUDIES

- 14.1 Motion Sickness
- 14.2 Post-Operative Nausea and Vomiting

16 HOW SUPPLIED/STORAGE AND HANDLING

17 PATIENT COUNSELING INFORMATION

*Sections or subsections omitted from the full prescribing information are not listed.

4 CONTRAINDICATIONS

Transderm Scop® is contraindicated in the following populations:

- Patients with angle closure glaucoma. [see Adverse Reactions (6)]
- Persons who are hypersensitive to the drug scopolamine or other belladonna alkaloids or to any ingredient or component in the formulation or delivery system. [see Drug Interactions (7) and Description (11)]

5 WARNINGS AND PRECAUTIONS

5.1 Open Angle Glaucoma

Patients currently being treated for Open Angle Glaucoma
 Glaucoma therapy in patients with open angle glaucoma should be monitored and may need to be adjusted during Transderm Scop® use, as the mydriatic effect of scopolamine may cause an increase in intraocular pressure.

Patients should be advised to remove the patch immediately and promptly contact a physician in the event that they experience symptoms of acute angle closure glaucoma (pain and reddening of the eyes, accompanied by dilated pupils).

5.2 Temporary Dilation of the Pupil

Scopolamine can cause temporary dilation of the pupils and blurred vision if it comes in contact with the eyes.

Patients should be strongly advised to wash their hands thoroughly with soap and water immediately after handling the patch. [see Adverse Reactions (6)] In addition, it is important that used patches be disposed of properly to avoid contact with children or pets. [see How Supplied/Storage and Handling (16)]

5.3 Preexisting Gastrointestinal or Urinary Bladder Obstructions

Transderm Scop® should be used with caution in patients with pyloric obstruction or urinary bladder neck obstruction. Caution should be



exercised when administering an antiemetic or anticholinergic drug, including Transderm Scop®, to patients suspected of having intestinal obstruction.

Patients should be instructed to remove the patch if they develop any difficulties in urinating. [see Adverse Reactions (6)]

5.4 History of Seizures or Psychosis

Transderm Scop® should be used with caution in patients with a history of seizures or psychosis since scopolamine can potentially aggravate both disorders.

5.5 Idiosyncratic Reactions

Idiosyncratic reactions may occur with ordinary therapeutic doses of scopolamine. The most serious of these that have been reported are: acute toxic psychosis, including confusion, agitation, speech disorder, hallucinations, paranoia, and delusions. [see Adverse Reactions (6)]

5.6 Specific Populations

Pediatric

A safe and effective dose has not been established in the pediatric population [see Use in Specific Populations (8.4)]. Children are particularly susceptible to the side effects of belladonna alkaloids; including mydriasis, hallucinations, amblyopia, and drug withdrawal syndrome. Neurologic and psychiatric adverse reactions, such as hallucinations, amblyopia and mydriasis have also been reported when one half or one quarter of a patch has been applied.

Elderly

Transderm Scop® should be used with caution in the elderly because of the increased likelihood of CNS effects, such as hallucinations, confusion, dizziness and drug withdrawal syndrome. Clinical trials of Transderm Scop® did not include sufficient number of subjects aged 65 years and older to determine if they respond differently from younger subjects. [see Use in Specific Populations (8.5)]

Renal and Hepatic Impaired

Transderm Scop® should be used with caution in individuals with impaired renal or hepatic functions because of the increased likelihood of CNS effects. Transderm Scop® has not been studied in these populations. [see Use in Specific Populations (8.6)]

5.7 Safety Hazards

Drowsiness

Since drowsiness, disorientation, and confusion may occur with the use of scopolamine, patients should be warned of the possibility and cautioned against engaging in activities that require mental alertness, such as driving a motor vehicle or operating dangerous machinery.

Disorienting Effects

Patients who expect to participate in underwater sports should be cautioned regarding the potentially disorienting effects of scopolamine. [see Patient Counseling Information (17)]

5.8 MRI Skin Burns

Skin burns have been reported at the patch site in several patients wearing an aluminized transdermal system during a Magnetic Resonance Imaging scan (MRI). Because Transderm Scop® contains aluminum, it is recommended to remove the system before undergoing an MRI.

6 ADVERSE REACTIONS

6.1 Clinical Trials Experience

Because clinical trials are conducted under widely varying conditions, adverse reaction rates observed in the clinical trials of a drug cannot be directly compared to rates in the clinical trials of another drug and may not reflect the rates observed in clinical practice.

Motion Sickness

In motion sickness clinical studies of Transderm Scop®, the most frequent adverse reaction was dry mouth. This occurred in about two thirds of patients on drug. A less frequent adverse drug reaction was drowsiness, which occurred in less than one sixth of patients on drug. Transient impairment of eye accommodation, including blurred vision and dilation of the pupils, was also observed.

Post-Operative Nausea and Vomiting

In a total of five clinical studies in which Transderm Scop® was administered perioperatively to a total of 461 patients where safety was assessed, dry mouth was the most frequently reported adverse drug reaction, which occurred in approximately 29% of patients on drug. Dizziness was reported by approximately 12% of patients on drug. Other adverse drug reactions reported from these studies, with a frequency of ≥3% of patients treated with Transderm Scop® and with a frequency higher than placebo were, in descending order: somnolence, urinary retention, agitation/restlessness, visual impairment, confusion, mydriasis and pharyngitis (see Table 6.1).

Table 6.1 PONV: Adverse Drug Reactions in ≥3% of Patients

	Transderm Scop® (N=461)		Placebo (N=457)	
	n	%	n	%
Adverse Drug Reactions	303	65.7	259	56.7
Dry mouth	133	28.9	72	15.8
Dizziness	57	12.4	33	7.2
Somnolence	36	7.8	16	3.5
Urinary Retention	33	7.2	30	6.6
Agitation	28	6.1	20	4.4
Visual Impairment	23	5.0	12	2.6
Confusion	18	3.9	14	3.1
Mydriasis	16	3.5	2	0.4
Pharyngitis	15	3.3	10	2.2

6.2 Postmarketing Experience

The following adverse drug reactions, further to those reported from clinical trials, have been identified during postapproval use of Transderm Scop®. Because these reactions are reported voluntarily from a population of uncertain size, it is not always possible to reliably estimate their frequency or to confirm a definite causal relationship.

In worldwide marketing with Transderm Scop®, the following adverse drug reactions were reported by body system.

Psychiatric disorders: acute psychosis including: hallucinations disorientation, and paranoia.

Nervous system disorders: headache, amnesia, coordination abnormalities, speech disorder, disturbance in attention, restlessness.

General disorders and administration site conditions: application site burning.

Eye disorders: dry eyes, eye pruritis, angle closure glaucoma, amblyopia, eyelid irritation.

Skin and subcutaneous tissue disorders: rash generalized, skin irritation, erythema.

Renal and urinary disorders: dysuria.

Ear and Labyrinth Disorders: vertigo.

6.3 Drug Withdrawal/Post-Removal Symptoms

Symptoms such as dizziness, nausea, vomiting, abdominal cramps, sweating, headache, mental confusion, muscle weakness, bradycardia and hypotension may occur following abrupt discontinuation of anticholinergic drugs such as Transderm Scop®. Similar symptoms, including disturbances of equilibrium, have been reported in some patients following discontinuation

of use of the Transderm Scop® system. These symptoms usually do not appear until 24 hours or more after the patch has been removed. These symptoms can be severe and may require medical intervention. Some symptoms may be related to adaptation from a motion environment to a motion-free environment.

7 DRUG INTERACTIONS

The absorption of oral medications may be decreased during the concurrent use of scopolamine because of decreased gastric motility and delayed gastric emptying. [see Warnings and Precautions (5.3)]

Scopolamine should be used with caution in patients taking other drugs that are capable of causing CNS effects such as sedatives, tranquilizers, or alcohol. Special attention should be paid to potential interactions with drugs having anticholinergic properties; e.g., other belladonna alkaloids, antihistamines (including meclizine), tricyclic antidepressants, and muscle relaxants.

In vitro studies indicated that the potential for scopolamine to alter the pharmacokinetics of other concomitant medications through inhibition of CYP 1A2, 2C8, 2C9, 2C19, 2D6 and 3A4 or induction of CYP 1A2 and 3A4 is low; however, *in vivo* studies have not been conducted. [see Clinical Pharmacology (12.3)]

7.1 Laboratory Test Interactions

Scopolamine will interfere with the gastric secretion test.

8 USE IN SPECIFIC POPULATIONS

8.1 Pregnancy

Pregnancy Category C

Based on data from one prospective study of Transderm Scop® in cesarean delivery, the rate of newborn adverse events in both the Transderm Scop® and placebo groups were the same. The rates were 10.5% (12 events in 114 newborns) in both treatment groups. None of these events were considered life threatening or drug related. Jaundice was the only adverse event occurring more frequently with Transderm Scop® than placebo: 9 events (7.9%) versus 2 events (1.8%) (p=0.031). Jaundice, a common occurrence in newborns, resolved with ultraviolet light and did not prolong the hospital stay.

There are no adequate and well-controlled studies of Transderm Scop® use during pregnancy. In animal reproduction studies, when pregnant rats and rabbits received scopolamine hydrobromide by daily intravenous injection, no adverse effects were observed in rats. An embryotoxic effect was observed in rabbits at doses producing plasma levels approximately 100 times the levels achieved in humans using a transdermal system. Transderm Scop® should be used during pregnancy only if the potential benefit justifies the potential risk to the fetus and the mother.

8.2 Labor and Delivery

During a clinical study among women undergoing cesarean section treated with Transderm Scop® in conjunction with epidural anesthesia and opiate analgesia, no evidence of CNS depression was found in newborns. [see Clinical Studies (14.2)] Scopolamine administered parenterally to rats and rabbits at doses higher than the dose delivered by Transderm Scop® did not affect uterine contractions or increase the duration of labor. Scopolamine does cross the placenta.

8.3 Nursing Mothers

Scopolamine is excreted in human milk. Caution should be exercised when Transderm Scop® is administered to a nursing woman.

8.4 Pediatric Use

A safe and effective dose has not been established in the pediatric population. [see Warnings and Precautions (5.6)]

8.5 Geriatric Use

Transderm Scop® should be used with caution in the elderly because of the increased likelihood of CNS effects, such as hallucinations, confusion and dizziness. Clinical trials of Transderm Scop® did not include sufficient number of subjects aged 65 years and older to determine if they respond differently from younger subjects. [see Warnings and Precautions (5.6)]

8.6 Renal or Hepatic Impairment

Transderm Scop® should be used with caution in individuals with impaired renal or hepatic functions because of the increased likelihood of CNS effects. [see Warnings and Precautions (5.6)]

9 DRUG ABUSE AND DEPENDENCE

9.1 Controlled Substance Class

Scopolamine is not a controlled substance.

9.2 Abuse

Scopolamine is an antagonist at muscarinic receptors in the cholinergic system. Drugs in this class are not known to have significant abuse potential in humans.

9.3 Dependence

Abrupt termination of Transderm Scop® may result in withdrawal symptoms such as dizziness, nausea, vomiting, abdominal cramps, sweating, headache, mental confusion, muscle weakness, bradycardia and hypotension. [see Adverse Reactions (6.3) and Overdosage (10)] These withdrawal symptoms indicate that anticholinergic drugs, like scopolamine may produce physical dependence. These symptoms can be severe and may require medical intervention.

10 OVERDOSAGE

Because strategies for the management of drug overdose continually evolve, it is strongly recommended that a poison control center be contacted to obtain up-to-date information regarding the management of Transderm Scop® patch overdose. The prescriber should be mindful that antidotes used routinely in the past may no longer be considered optimal treatment. For example, physostigmine, used more or less routinely in the past, is seldom recommended for the routine management of anticholinergic syndromes.

Until up-to-date authoritative advice is obtained, routine supportive measures should be directed to maintaining adequate respiratory and cardiac function.

The signs and symptoms of anticholinergic toxicity include: lethargy, somnolence, coma, confusion, agitation, hallucinations, convulsion, visual disturbance, dry flushed skin, dry mouth, decreased bowel sounds, urinary retention, tachycardia, hypertension, and supraventricular arrhythmias. These symptoms can be severe and may require medical intervention.

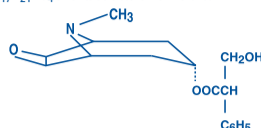
In cases of toxicity remove the patch. Serious symptomatic cases of overdose involving multiple patch applications and/or ingestion may be managed by initially ensuring the patient has an adequate airway, and supporting respiration and circulation. This should be rapidly followed by removal of all patches from the skin and the mouth. If there is evidence of patch ingestion, gastric lavage, endoscopic removal of swallowed patches, or administration of activated charcoal should be considered, as indicated by the clinical situation. In any case where there is serious overdose or signs of evolving acute toxicity, continuous monitoring of vital signs and ECG, establishment of intravenous access, and administration of oxygen are all recommended.

The symptoms of overdose/toxicity due to scopolamine should be carefully distinguished from the occasionally observed syndrome of withdrawal. [see Adverse Reactions (6.3)] Although mental confusion and dizziness may be observed with both acute toxicity and withdrawal, other characteristic findings differ: tachyarrhythmias, dry skin, and decreased bowel sounds suggest anticholinergic toxicity, while bradycardia, headache, nausea and abdominal cramps, and sweating suggest

post-removal withdrawal. Obtaining a careful history is crucial to making the correct diagnosis.

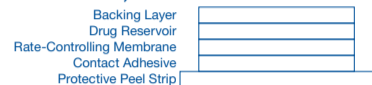
11 DESCRIPTION

The Transderm Scop® (scopolamine) transdermal system is a circular, flat, tan-colored patch imprinted with "Scopolamine 1 mg/3 days", designed for continuous release of scopolamine following application to an area of intact skin on the head, behind the ear. Each system contains 1.5 mg of scopolamine base. Scopolamine is α -(hydroxymethyl) benzeneacetic acid 9-methyl-3-oxa-9-azatricyclo [3.3.1.0^{2,4}] non-7-yl ester. The empirical formula is C₁₇H₂₁NO₄ and its structural formula is:



Scopolamine is a viscous liquid that has a molecular weight of 303.35 and a pKa of 7.55-7.81. The Transderm Scop® system is a film 0.2 mm thick and 2.5 cm², with four layers. Proceeding from the visible surface towards the surface attached to the skin, these layers are: (1) a backing layer of tan-colored, aluminumized, polyester film; (2) a drug reservoir of scopolamine, light mineral oil; and polyisobutylene; (3) a microporous polypropylene membrane that controls the rate of delivery of scopolamine from the system to the skin surface; and (4) an adhesive formulation of mineral oil, polyisobutylene, and scopolamine. A protective peel strip of siliconized polyester, which covers the adhesive layer, is removed before the system is used. The inactive components, light mineral oil (12.4 mg) and polyisobutylene (11.4 mg), are not released from the system.

Cross section of the system:



12 CLINICAL PHARMACOLOGY

12.1 Mechanism of Action

Scopolamine, a belladonna alkaloid, is an anticholinergic agent. Scopolamine acts: i) as a competitive inhibitor at postsynaptic muscarinic receptor sites of the parasympathetic nervous system, and ii) on smooth muscles that respond to acetylcholine but lack cholinergic innervation. It has been suggested that scopolamine acts in the central nervous system (CNS) by blocking cholinergic transmission from the vestibular nuclei to higher centers in the CNS and from the reticular formation to the vomiting center. Scopolamine can inhibit the secretion of saliva and sweat, decrease gastrointestinal secretions and motility, cause drowsiness; dilate the pupils; increase heart rate; and depress motor function.

12.3 Pharmacokinetics

The pharmacokinetics of scopolamine delivered via the system are due to the characteristics of both the drug and dosage form. The system is formulated to deliver *in vivo* approximately 1 mg of scopolamine at an approximately constant rate to the systemic circulation over 3 days. Upon application to the postauricular skin, an initial priming dose of scopolamine is released from the adhesive layer to saturate skin-binding sites. The subsequent delivery of scopolamine to the blood is determined by the rate controlling membrane and is designed to produce stable plasma levels in a therapeutic range. Following removal of the used system, there is some degree of continued systemic absorption of scopolamine bound in the skin layers.

Absorption

Scopolamine is well absorbed percutaneously. Following application to the skin behind the ear, circulating plasma levels are detected within 4 hours with peak levels being obtained, on average, within 24 hours. The average plasma concentration produced is 87 pg/mL (0.28 nM) for free scopolamine and 354 pg/mL for total scopolamine (free + conjugates).

Distribution

The distribution of scopolamine is not well characterized. It crosses the placenta and the blood brain barrier and may be reversibly bound to plasma proteins.

Metabolism and Excretion

The exact elimination pattern of scopolamine has not been determined. Following patch removal, plasma levels of scopolamine decline in a log linear fashion with an observed half-life of 9.5 hours. Less than 10% of the total dose is excreted in the urine as the parent drug and metabolites over 108 hours. Scopolamine is extensively metabolized and conjugated with less than 5% of the total dose appearing unchanged in the urine. The enzymes responsible for metabolizing scopolamine are unknown.

Drug Interaction

An *in vitro* study using human hepatocytes examined the induction of CYP1A2 and CYP3A4 by scopolamine. Scopolamine did not induce CYP1A2 and CYP3A4 isoenzymes at the concentrations up to 10 nM. In an *in vitro* study using human liver microsomes which evaluated the inhibition of CYP1A2, 2C8, 2C9, 2C19, 2D6 and 3A4, scopolamine did not inhibit these cytochrome P450 isoenzymes at the concentrations up to 1 mcM.

13 NONCLINICAL PHARMACOLOGY

13.1 Carcinogenesis, Mutagenesis, Impairment of Fertility

No long-term studies in animals have been conducted to evaluate the carcinogenic potential of scopolamine. The mutagenic potential of scopolamine has not been evaluated.

Fertility studies were performed in female rats and revealed no evidence of impaired fertility or harm to the fetus due to scopolamine hydrobromide administered by daily subcutaneous injection. Maternal body weights were reduced in the highest-dose group (plasma level approximately 500 times the level achieved in humans using a transdermal system). However, fertility studies in male animals were not performed.

14 CLINICAL STUDIES

14.1 Motion Sickness

In 195 adult subjects of different racial origins who participated in clinical efficacy studies at sea or in a controlled motion environment, there was a 75% reduction in the incidence of motion-induced nausea and vomiting.

14.2 Post-Operative Nausea and Vomiting

In two pivotal clinical efficacy studies in 391 adult female patients undergoing cesarean section or gynecological surgery with anesthesia and opiate analgesia, 66% of those treated with Transderm Scop® (compared to only 46% of those receiving placebo) reported no retching/vomiting within the 24-hour period following administration of anesthesia/opiate analgesia. When the need for additional antiemetic medication was assessed during the same period, there was no need for medication in 76% of patients treated with Transderm Scop® as compared to 59% of placebo-treated patients.

16 HOW SUPPLIED/STORAGE AND HANDLING

The Transderm Scop® system is a tan-colored, circular patch with an imprint "Scopolamine 1 mg/3 days", 2.5 cm², on a clear, oversized, hexagonal peel strip, which is removed prior to use.

Each Transderm Scop® system contains 1.5 mg of scopolamine and is formulated to deliver *in vivo* approximately 1 mg of scopolamine over 3 days. Transderm Scop® is available in packages of four patches. Each patch is foil wrapped. Patient instructions are included. [See Patient Counseling Information (17)]

- 1 Package (4 patches) NDC 66758-208-54

Storage

The system should be stored at controlled room temperature between 20°-25°C (68°-77°F).

Handling

Since scopolamine can cause temporary dilation of the pupils and blurred vision if it comes in contact with the eyes, patients should be strongly advised to wash their hands thoroughly with soap and water immediately after handling the patch. In addition, it is important that used patches be disposed of properly to avoid contact with children or pets. [See Dosage and Administration (2), Warnings and Precautions (5.2), and Patient Counseling Information (17)]

17 PATIENT COUNSELING INFORMATION

See FDA-approved patient labeling (Patient Information)

Please read this instruction sheet carefully before opening the system package.

Transderm Scop® Transdermal System

Generic Name: scopolamine, pronounced skoe-POL-ah-meen

Elderly patients should be informed that Transderm Scop® may cause a greater likelihood of CNS effects, such as hallucinations, confusion, dizziness and drug withdrawal syndrome and to seek immediate medical care if they become confused, disoriented or dizzy while wearing the patch or after removing.

Patients should be informed that since Transderm Scop® may cause drowsiness, disorientation and confusion they should avoid engaging in activities that require mental alertness such as driving a motor vehicle or operating dangerous machinery.

Patients who expect to participate in underwater sports should be cautioned regarding the potentially disorienting effects of Transderm Scop®.

Because of the possibility of drowsiness, disorientation and confusion, patients should be informed that they should avoid drinking alcohol. In addition, patients should be informed that the following medications should be used with caution when taking Transderm Scop®:

- sedatives or tranquilizers
- drugs with anticholinergic properties (e.g., other belladonna alkaloids),
- antihistamines (including medicine)
- tricyclic antidepressants
- muscle relaxants

Patients with the following conditions should be informed about the chance of developing serious reactions with Transderm Scop®:

- patients with open angle glaucoma (may cause an increase in intraocular pressure)
- patients with impaired kidney or liver function (increased likelihood of CNS effects)
- patients with a history of seizures or psychosis (can potentially worsen both disorders)
- patients with obstruction at the level of the pylorus, which is the outlet of the stomach, or urinary bladder neck obstruction (may cause difficulties in urinating)
- patients suspected of having intestinal obstruction
- pregnant or nursing mothers

Patients should be informed that if they remove the Transderm Scop® patch suddenly before treatment is complete, the following withdrawal symptoms may occur: dizziness, nausea, vomiting, abdominal cramps, sweating, headache, mental confusion, muscle weakness, slow heart rate and low blood pressure. Patients should be instructed to seek immediate medical care if they develop any of these symptoms after removing Transderm Scop®.

Patients should be informed that Transderm Scop® can cause temporary dilation of the pupils and blurred vision if it comes in contact with the eyes. Patients should be informed to wash their hands thoroughly with soap and water immediately after handling the patch. In addition, patients should be informed that used patches must be disposed of properly to avoid contact with children or pets.

Patients should be informed that skin burns have been reported at the patch site in several patients wearing an aluminumized transdermal system during a Magnetic Resonance Imaging scan (MRI). Because Transderm Scop® contains aluminum, patients should be advised to remove the system before undergoing an MRI.

- Patients should be advised to use only one patch at a time.
- Patients should be advised not to cut the patch.

FDA- Approved Patient Labeling

PATIENT INFORMATION

Transderm Scop®, pronounced tran(t)is-derm skop (scopolamine) transdermal system patch

Read this Patient Information before you start using Transderm Scop® and each time you get a refill. There may be new information. This information does not take the place of talking to your doctor about your medical condition or your treatment.

What is Transderm Scop®?

The Transderm Scop® patch is a prescription medicine used for adults to:

- help prevent nausea and vomiting from motion sickness
- help prevent nausea and vomiting from anesthesia or taking opioid pain medicines after surgery

It is not known if Transderm Scop® is safe or effective in children.

Who should not use Transderm Scop®?

Do not use Transderm Scop® if you:

- have an eye problem called angle closure glaucoma
- if you are allergic to any of the ingredients in Transderm Scop® or other medicines called belladonna alkaloids. See the end of this leaflet for a list of the ingredients in Transderm Scop®. Ask your doctor if you are not sure.

What should I tell my doctor before using Transderm Scop®?

Before you use Transderm Scop®, tell your doctor if you:

- are scheduled to have a gastric secretion test
- have glaucoma (increased pressure in the eye)
- have liver or kidney problems
- have problems with your stomach or intestines
- have trouble urinating
- have a history of seizures or psychosis
- have any other medical conditions
- are pregnant or plan to become pregnant. It is not known if Transderm Scop® can harm your unborn baby.
- are breast-feeding or plan to breast-feed. Transderm Scop® can pass into your breast milk and may harm your baby. Talk to your doctor about the best way to feed your baby if you use Transderm Scop®.

Tell your doctor about all the medicines you take, including prescription and non-prescription medicines, vitamins and herbal supplements. Transderm Scop® may affect the way other medicines work, and other medicines may affect how Transderm Scop® works. Medicines that you take by mouth may not be absorbed well while you use Transderm Scop®.

Especially tell your doctor if you take:

- a sedative or tranquilizer (medicines that make you sleepy)
- an antidepressant medicine
- an anticholinergic medicine, such as an allergy or cold medicine, a medicine to treat bladder or bowel spasms, certain asthma medicines, or other medicines for motion sickness.

Ask your doctor if you are not sure if your medicine is one that is listed above.

Know the medicines you take. Keep a list of them and show it to your doctor or pharmacist when you get a new medicine.

How should I use Transderm Scop®?

Use Transderm Scop® exactly as your doctor tells you to use it.

Transderm Scop® is a tan-colored, circle shaped patch with an imprint of "Scopolamine 1 mg/3 days".

Wear only one patch at any time.

Do not cut the patch.

To help prevent nausea and vomiting from motion sickness:

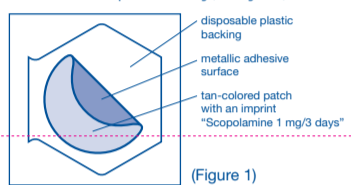
- Apply one Transderm Scop® patch to your skin on a hairless area behind one ear at least 4 hours before the activity to prevent nausea and vomiting.
- If the treatment is needed for longer than 3 days, remove the patch from the hairless area behind your ear. Get a new Transderm Scop® patch and place it on the hairless area behind your other ear.

To help prevent nausea and vomiting after surgery:

- Follow your doctor's instructions about when to apply Transderm Scop® before your scheduled surgery.
- The Transderm Scop® patch should be left in place for 24 hours after surgery. After 24 hours the patch should be removed and thrown away.

Apply Transderm Scop® as follows:

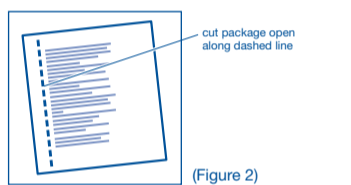
Inside the Transderm Scop® package, you will find one Transderm Scop® patch. An imprinted, tan-colored patch with a metallic (silver) sticky surface is adhered to a clear disposable backing (See Figure 1).



(Figure 1)

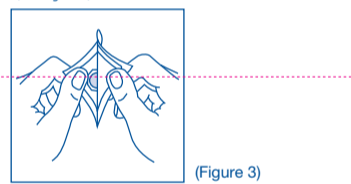
1. Select a hairless area of skin behind one of your ears. Avoid areas on your skin that may have cuts, pain or tenderness. Wipe the area of your skin with a clean, dry tissue.

2. Cut along dotted line on the Transderm Scop® package to open (See Figure 2).



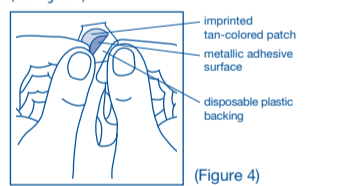
(Figure 2)

3. Remove the clear plastic backing from the imprinted, tan-colored round patch (See Figure 3).



(Figure 3)

4. Avoid touching the metallic adhesive (sticky) surface on the patch with your hands (See Figure 4).

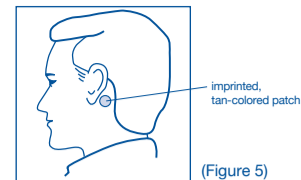


(Figure 4)

5. Apply the metallic adhesive surface of the patch firmly to the dry area of skin behind your ear. The imprinted, tan-colored side of the patch should be facing up and showing (See Figure 5). Wash your hands with soap and water right away after applying the patch, so that any medicine from the patch that gets on your hands will not get into your eyes.



11420



(Figure 5)

After removing the patch, be sure to wash your hands and the area behind your ear thoroughly with soap and water. Note that the used patch will still contain some of the active ingredient after use. To avoid accidental contact or ingestion by children or pets, fold the used patch in half with the sticky side together. Dispose in the trash out of the reach of children and pets.

If you use too much Transderm Scop®, call your doctor or local poison control center, or go to the nearest hospital emergency room right away.

What should I avoid while using Transderm Scop®?

- You should not drink alcohol while using Transderm Scop®. It can increase your chances of having serious side effects.
- You should not drive, operate heavy machinery, or do other dangerous activities until you know how Transderm Scop® affects you.
- You should not use Transderm Scop® during a Magnetic Resonance Imaging scan (MRI). Remove Transderm Scop® patch before undergoing an MRI; it can cause your skin to burn.
- You should be careful if you use Transderm Scop® while you participate in watersports because you may feel lost or confused (disoriented).
- Limit contact with water while swimming and bathing because the Transderm Scop® patch may fall off. If the patch falls off, throw it away and apply a new one on the hairless area behind your other ear.

What are the possible side effects of Transderm Scop®?

- **angle closure glaucoma.** If you have open angle glaucoma and use Transderm Scop®, remove the patch and call a doctor right away if you get pain and reddening of your eyes with an increase in the size of your pupil (the small dark circle in the eye).
- **temporary increase in the size of your pupil and blurry vision**, especially if Transderm Scop® comes in contact with your eyes
- **difficulties in urinating**
- **difficulties in food passing from the stomach to the small intestines, which may cause abdominal pain, nausea or vomiting.**
- **worsening of seizures.** Tell your doctor about any worsening of seizures while using Transderm Scop®.
- **an unusual reaction called acute psychosis.** Tell your doctor if you have any of these symptoms:

- confusion
- agitation
- rambling speech
- hallucinations (seeing or hearing things that are not there)
- paranoid behaviors and delusions (false belief in something)
- **skin burns at the site of the patch.** This can happen during a medical test called a Magnetic Resonance Imaging scan (MRI). Transderm Scop® contains aluminum and should be removed from your skin before you have an MRI.

The most common side effects of using Transderm Scop® include:

- dry mouth
- drowsiness
- disorientation (confusion)
- blurred vision
- pharyngitis
- memory trouble
- dizziness
- restlessness
- agitation
- problems urinating
- skin rashes or redness, application site burning
- dry itchy, or reddened whites of the eyes, and eye pain

Symptoms when removing Transderm Scop®. Some people may have certain symptoms 24 hours or more after removing Transderm Scop®. These symptoms may include:

- dizziness
- nausea
- vomiting
- headache
- problems with balance and walking
- decrease in blood pressure
- muscle weakness
- decrease in heart rate

Tell your doctor if you have any side effect that bothers you or that does not go away. These are not all the possible side effects of Transderm Scop®. For more information, ask your doctor or pharmacist.

Call your doctor for medical advice about side effects. You may report side effects to FDA at 1-800-FDA-1088.

How should I store Transderm Scop®?

- Store Transderm Scop® at room temperature between 68°-77°F (20°-25°C) until you are ready to use it.
- **Keep Transderm Scop® and all medicines out of reach of children.**

General Information about Transderm Scop®

Medicines are sometimes prescribed for purposes other than those listed in a patient information leaflet. Do not use Transderm Scop® for a condition for which it was not prescribed. Do not give Transderm Scop® to other people, even if they have the same symptoms you have. It may harm them.

This patient information leaflet summarizes the most important information about Transderm Scop®. If you would like more information, talk with your doctor. You can ask your pharmacist or doctor for information about Transderm Scop® that is written for the health professionals.

For more information, go to www.transdermscop.com or call Sandoz Inc. at 1-800-398-5876.

What are the ingredients in the Transderm Scop® patch?

Active ingredient: Scopolamine

Inactive ingredients: light mineral oil polyisobutylene and aluminumized polyester film

Manufactured by ALZA Corporation, Vacaville, CA 95688 for Sandoz Inc., Princeton, NJ 08540

Rev.: December 2016

Printed in U.S.A.

11420

PATIENT INFORMATION

Transderm Scöp®,
pronounced
tran(t)s-derm sköp
(scopolamine)
transdermal system patch

Read this Patient Information before you start using Transderm Scöp® and each time you get a refill. There may be new information. This information does not take the place of talking to your doctor about your medical condition or your treatment.

What is Transderm Scöp®?

The Transderm Scöp® patch is a prescription medicine used for adults to:

- help prevent nausea and vomiting from motion sickness
- help prevent nausea and vomiting from anesthesia or taking opioid pain medicines after surgery

It is not known if Transderm Scöp® is safe or effective in children.

Who should not use Transderm Scöp®?

Do not use Transderm Scöp® if you:

- have an eye problem called angle closure glaucoma
- if you are allergic to any of the ingredients in Transderm Scöp® or other medicines called belladonna alkaloids. See the end of this leaflet for a list of the ingredients in Transderm Scöp®. Ask your doctor if you are not sure.

What should I tell my doctor before using Transderm Scöp®?

Before you use Transderm Scöp®, tell your doctor if you:

- are scheduled to have a gastric secretion test
- have glaucoma (increased pressure in the eye)
- have liver or kidney problems
- have problems with your stomach or intestines
- have trouble urinating
- have a history of seizures or psychosis
- have any other medical conditions
- are pregnant or plan to become pregnant. It is not known if Transderm Scöp® can harm your unborn baby.
- are breast-feeding or plan to breast-feed. Transderm Scöp® can pass into your breast milk and may harm your baby. Talk to your doctor about the best way to feed your baby if you use Transderm Scöp®.



Tell your doctor about all the medicines you take, including prescription and non-prescription medicines, vitamins and herbal supplements. Transderm Scöp® may affect the way other medicines work, and other medicines may affect how Transderm Scöp® works. Medicines that you take by mouth may not be absorbed well while you use Transderm Scöp®.

Especially tell your doctor if you take:

- a sedative or tranquilizer (medicines that make you sleepy)
- an antidepressant medicine
- an anticholinergic medicine, such as an allergy or cold medicine, a medicine to treat bladder or bowel spasms, certain asthma medicines, or other medicines for motion sickness.

Ask your doctor if you are not sure if your medicine is one that is listed above.

Know the medicines you take. Keep a list of them and show it to your doctor or pharmacist when you get a new medicine.

How should I use Transderm Scöp®?

Use Transderm Scöp® exactly as your doctor tells you to use it.

Transderm Scöp® is a tan-colored, circle shaped patch with an imprint of "Scopolamine" 1 mg/3 days".

Wear only one patch at any time.

Do not cut the patch.

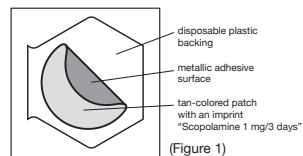
To help prevent nausea and vomiting from motion sickness:

- Apply one Transderm Scöp® patch to your skin on a hairless area behind one ear at least 4 hours before the activity to prevent nausea and vomiting.
- If the treatment is needed for longer than 3 days, remove the patch from the hairless area behind your ear. Get a new Transderm Scöp® patch and place it on the hairless area behind your other ear.

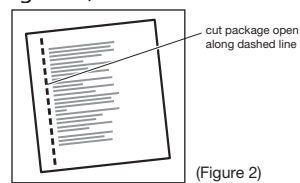
To help prevent nausea and vomiting after surgery:

- Follow your doctor's instructions about when to apply Transderm Scöp® before your scheduled surgery.
- The Transderm Scöp® patch should be left in place for 24 hours after surgery. After 24 hours the patch should be removed and thrown away.

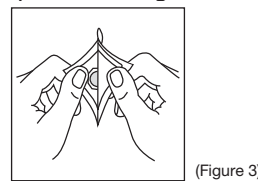
Apply Transderm Scöp® as follows: Inside the Transderm Scöp® package, you will find one Transderm Scöp® patch. An imprinted tan colored patch with a metallic (silver) sticky surface is adhered to a clear disposable backing (See Figure 1).



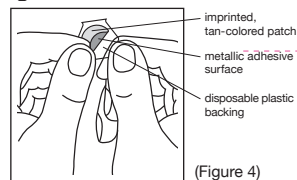
1. Select a hairless area of skin behind one of your ears. Avoid areas on your skin that may have cuts, pain or tenderness. Wipe the area of your skin with a clean, dry tissue.
2. Cut along dotted line on the Transderm Scöp® package to open (See Figure 2).



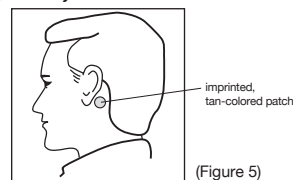
3. Remove the clear plastic backing from the imprinted, tan-colored round patch (See Figure 3).



4. Avoid touching the metallic adhesive (sticky) surface on the patch with your hands (See Figure 4).



5. Apply the metallic adhesive surface of the patch firmly to the dry area of skin behind your ear. The imprinted, tan-colored side of the patch should be facing up and showing (See Figure 5). Wash your hands with soap and water right away after applying the patch, so that any medicine from the patch that gets on your hands will not get into your eyes.



After removing the patch, be sure to wash your hands and the area behind your ear thoroughly with soap and water. Note that the used patch will still contain some of the active ingredient after use. To avoid accidental contact or ingestion by children or pets, fold the used patch in half with the sticky side together. Dispose in the trash out of the reach of children and pets.

If you use too much Transderm Scöp®, call your doctor or local poison control center, or go to the nearest hospital emergency room right away.

What should I avoid while using Transderm Scöp®?

- You should not drink alcohol while using Transderm Scöp®. It can increase your chances of having serious side effects.
- You should not drive, operate heavy machinery, or do other dangerous activities until you know how Transderm Scöp® affects you.
- You should not use Transderm Scöp® during a Magnetic Resonance Imaging scan (MRI). Remove Transderm Scöp® patch before undergoing an MRI; it can cause your skin to burn.
- You should be careful if you use Transderm Scöp® while you participate in watersports because you may feel lost or confused (disoriented).
- Limit contact with water while swimming and bathing because the Transderm Scöp® patch may fall off. If the patch falls off, throw it away and apply a new one on the hairless area behind your other ear.

What are the possible side effects of Transderm Scöp®?

Transderm Scöp® may cause serious side effects, including:

- **angle closure glaucoma.** If you have open angle glaucoma and use Transderm Scöp®, remove the patch and call a doctor right away if you get pain and reddening of your eyes with an increase in the size of your pupil (the small dark circle in the eye).
- **temporary increase in the size of your pupil and blurry vision,** especially if Transderm Scöp® comes in contact with your eyes
- **difficulties in urinating**
- **difficulties in food passing from the stomach to the small intestines, which may cause abdominal pain, nausea or vomiting.**
- **worsening of seizures.** Tell your doctor about any worsening of seizures while using Transderm Scöp®.



• **an unusual reaction called acute psychosis:** Tell your doctor if you have any of these symptoms:

- confusion
- agitation
- rambling speech
- hallucinations (seeing or hearing things that are not there)
- paranoid behaviors and delusions (false belief in something)

• **skin burns at the site of the patch.** This can happen during a medical test called a Magnetic Resonance Imaging scan (MRI). Transderm Scöp® contains aluminum and should be removed from your skin before you have an MRI.

The most common side effects of using Transderm Scöp® include:

- dry mouth
- drowsiness
- disorientation (confusion)
- blurred vision
- pharyngitis
- memory trouble
- dizziness
- restlessness
- agitation
- problems urinating
- skin rashes or redness, application site burning
- dry itchy, or reddened whites of the eyes, and eye pain

Symptoms when removing Transderm Scöp®. Some people may have certain symptoms 24 hours or more after removing Transderm Scöp®. These symptoms may include:

- dizziness
- nausea
- vomiting
- headache
- problems with balance and walking
- decrease in blood pressure
- muscle weakness
- decrease in heart rate

Tell your doctor if you have any side effect that bothers you or that does not go away. These are not all the possible side effects of Transderm Scöp®. For more information, ask your doctor or pharmacist.

Call your doctor for medical advice about side effects. You may report side effects to FDA at 1-800-FDA-1088.

How should I store Transderm Scöp®?

- Store Transderm Scöp® at room temperature between 68°-77°F (20°-25°C) until you are ready to use it.
- **Keep Transderm Scöp® and all medicines out of reach of children.**

General Information about Transderm Scöp®

Medicines are sometimes prescribed for purposes other than those listed in a patient information leaflet. Do not use Transderm Scöp® for a condition for which it was not prescribed. Do not give Transderm Scöp® to other people, even if they have the same symptoms you have. It may harm them.

This patient information leaflet summarizes the most important information about Transderm Scöp®. If you would like more information, talk with your doctor. You can ask your pharmacist or doctor for information about Transderm Scöp® that is written for the health professionals.

For more information, go to www.transdermscop.com or call Sandoz Inc. at 1-800-525-8747.

What are the ingredients in the Transderm Scöp® patch?

Active ingredient: Scopolamine
Inactive ingredients: light mineral oil polyisobutylene and aluminized polyester film

Manufactured by ALZA Corporation
Vacaville, CA 95688 for
Sandoz Inc., Princeton, NJ 08540

Rev.: December 2016

11422

HIGHLIGHTS OF PRESCRIBING INFORMATION

These highlights do not include all the information needed to use Transderm Scop® safely and effectively. See full prescribing information for Transderm Scop®.

Transderm Scop® (scopolamine) transdermal system patch Initial U.S. Approval: 1979

INDICATIONS AND USAGE

Transderm Scop® is an anticholinergic agent indicated in adults for the prevention of nausea and vomiting associated with:

- Motion Sickness (1.1)
- Post Operative Nausea and Vomiting (PONV) (1.2)

DOSAGE AND ADMINISTRATION

DO NOT cut the patch. Apply ONE patch in the postauricular area to prevent:

Motion Sickness	• Apply 4 hrs before antiemetic effect is required— for use up to 3 days (2.1) • For use longer than 3 days, remove current patch and place new patch behind other ear (2.2)
Post Operative Nausea and Vomiting (PONV)	• Apply evening before scheduled surgery. (2.1) • For cesarean section, apply 1 hour prior to surgery (2.1) • Discard 24 hrs after surgery (2.2)

DOSAGE FORMS AND STRENGTHS

Continuous release, circular, flat, tan-colored patch imprinted with "Scopolamine 1 mg/3 days" (3)

CONTRAINDICATIONS

- Patients with angle closure glaucoma (4, 6.2)
- Persons who are hypersensitive to scopolamine or to other belladonna alkaloids (4, 7)

WARNINGS AND PRECAUTIONS

- Use with caution in patients with open angle glaucoma (5.1)
- Stop use if patient experiences symptoms of angle closure glaucoma (5.1, 6.2)
- Can cause temporary dilation and blurred vision if scopolamine contacts the eyes (5.2, 6, 16)

FULL PRESCRIBING INFORMATION: CONTENTS*

1 INDICATIONS AND USAGE

- 1.1 Motion Sickness
- 1.2 Post Operative Nausea and Vomiting (PONV)

2 DOSAGE AND ADMINISTRATION

- 2.1 Initiation of Therapy
- 2.2 Continuation of Therapy

3 DOSAGE FORMS AND STRENGTHS

4 CONTRAINDICATIONS

5 WARNINGS AND PRECAUTIONS

- 5.1 Open Angle Glaucoma
- 5.2 Temporary Dilation of the Pupil
- 5.3 Preexisting Gastrointestinal or Urinary Bladder Obstructions
- 5.4 History of Seizures or Psychosis
- 5.5 Idiosyncratic Reactions
- 5.6 Specific Populations
- 5.7 Safety Hazards
- 5.8 MRI Skin Burns

6 ADVERSE REACTIONS

- 6.1 Clinical Trials Experience
- 6.2 Postmarketing Experience
- 6.3 Drug Withdrawal/Post-Removal Symptoms

7 DRUG INTERACTIONS

- 7.1 Laboratory Test Interactions

FULL PRESCRIBING INFORMATION

1 INDICATIONS AND USAGE

1.1 Motion Sickness

Transderm Scop® is indicated in adults for prevention of nausea and vomiting associated with motion sickness. [see Clinical Studies (14.1)]

1.2 Post Operative Nausea and Vomiting (PONV)

Transderm Scop® is indicated in adults for prevention of nausea and vomiting associated with recovery from anesthesia and/or opiate analgesia and surgery. [see Clinical Studies (14.2)]

2 DOSAGE AND ADMINISTRATION

Each Transderm Scop® patch is formulated to deliver *in vivo* approximately 1 mg of scopolamine over 3 days. Only one patch should be worn at any time. Do not cut the patch.

The patch should be applied only to the skin in the postauricular (hairless area behind one ear) area.

Handling

After the patch is applied on the dry skin behind the ear, the hands should be washed thoroughly with soap and water and dried. Upon removal, the patch should be discarded. To prevent any traces of scopolamine from coming into direct contact with the eyes, after administration of the patch, the hands and the application site should be washed thoroughly with soap and water and dried. [see How Supplied/Storage and Handling (16) and Patient Counseling Information (17)]

2.1 Initiation of Therapy

Motion Sickness

To prevent the nausea and vomiting associated with motion sickness, one Transderm Scop® patch (formulated to deliver approximately 1 mg of scopolamine over 3 days) should be applied to the hairless area behind one ear at least 4 hours before the antiemetic effect is required.

Post Operative Nausea and Vomiting

To prevent post operative nausea and vomiting, one Transderm Scop® patch should be applied the evening before scheduled surgery, except for cesarean section. For cesarean section surgery, to minimize exposure of the newborn baby to the drug, apply the patch one hour prior to cesarean section.

2.2 Continuation of Therapy

Should the patch become displaced, it should be discarded, and a fresh one placed on the hairless area behind the other ear.

Motion Sickness

If therapy is required for longer than 3 days, the first patch should be removed and a fresh one placed on the hairless area behind the other ear.

Post Operative Nausea and Vomiting

For perioperative use, the patch should be kept in place for 24 hours following surgery at which time it should be removed and discarded.

3 DOSAGE FORMS AND STRENGTHS

The Transderm Scop® system is a circular, flat, tan-colored patch imprinted with "Scopolamine 1 mg/3 days" which contains 1.5 mg of scopolamine base and is formulated to deliver *in vivo* approximately 1 mg of scopolamine over 3 days.

- Use caution in patients with a history of seizures or psychosis (5.4)
- Use with caution in patients with pyloric obstruction, urinary bladder neck obstruction, or patients suspected of having intestinal obstruction (5.3)
- Stop use if patient has difficulty urinating (5.3, 6)
- Idiosyncratic reactions, such as confusion, agitation, speech disorder, hallucinations, paranoia and delusions, may occur with therapeutic doses of scopolamine (5.5, 6.2)
- A safe and effective dose has not been established in the pediatric population (5.6, 8.4)
- Use with caution in the elderly because of the increased likelihood of CNS effects, such as hallucinations, confusion and dizziness (5.6, 8.5)
- Should be used with caution in patients with impaired renal or hepatic function because of the increased likelihood of CNS effects (5.6, 8.5, 8.6)
- May cause drowsiness or disorienting effects, therefore patients should be cautioned against engaging in activities that require mental alertness, such as driving a motor vehicle or operating dangerous machinery (5.7)
- Skin burns have been reported in patients undergoing MRI testing (5.8)

ADVERSE REACTIONS

Most common adverse reactions during motion sickness clinical trials are dry mouth, drowsiness and blurred vision. (6.1)

Most common adverse reactions during PONV trials (greater than or equal to 3%) are dry mouth, dizziness, somnolence, urinary retention, agitation, visual impairment, confusion, mydriasis and pharyngitis. (6.1)

To report SUSPECTED ADVERSE REACTIONS, contact Sandoz Inc. at 1-800-398-5876 or FDA at 1-800-FDA-1088 or www.fda.gov/medwatch.

DRUG INTERACTIONS

- Absorption of oral medications may be decreased (7)
- Use with care while taking sedatives, tranquilizers or alcohol (7)
- Potential interactions with drugs having anticholinergic properties (7)
- Scopolamine interferes with the gastric secretion test (7.1)

USE IN SPECIFIC POPULATIONS

- Pregnancy: Based on animal data, may cause fetal harm (8.1)
- Nursing mothers: Caution should be exercised when administered to a nursing woman (8.3)

See 17 for PATIENT COUNSELING INFORMATION and FDA-approved patient labeling

Revised: 12/2016

8 USE IN SPECIFIC POPULATIONS

- 8.1 Pregnancy
- 8.2 Labor and Delivery
- 8.3 Nursing Mothers
- 8.4 Pediatric Use
- 8.5 Geriatric Use
- 8.6 Renal or Hepatic Impairment

9 DRUG ABUSE AND DEPENDENCE

- 9.1 Controlled Substance Class
- 9.2 Abuse
- 9.3 Dependence

10 OVERDOSAGE

11 DESCRIPTION

12 CLINICAL PHARMACOLOGY

- 12.1 Mechanism of Action
- 12.3 Pharmacokinetics

13 NONCLINICAL PHARMACOLOGY

- 13.1 Carcinogenesis, Mutagenesis, Impairment of Fertility

14 CLINICAL STUDIES

- 14.1 Motion Sickness
- 14.2 Post-Operative Nausea and Vomiting

16 HOW SUPPLIED/STORAGE AND HANDLING

17 PATIENT COUNSELING INFORMATION

*Sections or subsections omitted from the full prescribing information are not listed.

4 CONTRAINDICATIONS

Transderm Scop® is contraindicated in the following populations:

- Patients with angle closure glaucoma. [see Adverse Reactions (6)]
- Persons who are hypersensitive to the drug scopolamine or other belladonna alkaloids or to any ingredient or component in the formulation or delivery system. [see Drug Interactions (7) and Description (11)]

5 WARNINGS AND PRECAUTIONS

5.1 Open Angle Glaucoma

Patients currently being treated for Open Angle Glaucoma
Glaucoma therapy in patients with open angle glaucoma should be monitored and may need to be adjusted during Transderm Scop® use, as the mydriatic effect of scopolamine may cause an increase in intraocular pressure.

Patients should be advised to remove the patch immediately and promptly contact a physician in the event that they experience symptoms of acute angle closure glaucoma (pain and reddening of the eyes, accompanied by dilated pupils).

5.2 Temporary Dilation of the Pupil

Scopolamine can cause temporary dilation of the pupils and blurred vision if it comes in contact with the eyes.

Patients should be strongly advised to wash their hands thoroughly with soap and water immediately after handling the patch. [see Adverse Reactions (6)] In addition, it is important that used patches be disposed of properly to avoid contact with children or pets. [see How Supplied/Storage and Handling (16)]

5.3 Preexisting Gastrointestinal or Urinary Bladder Obstructions

Transderm Scop® should be used with caution in patients with pyloric obstruction or urinary bladder neck obstruction. Caution should be



exercised when administering an antiemetic or anticholinergic drug, including Transderm Scop®, to patients suspected of having intestinal obstruction.

Patients should be instructed to remove the patch if they develop any difficulties in urinating. [see Adverse Reactions (6)]

5.4 History of Seizures or Psychosis

Transderm Scop® should be used with caution in patients with a history of seizures or psychosis since scopolamine can potentially aggravate both disorders.

5.5 Idiosyncratic Reactions

Idiosyncratic reactions may occur with ordinary therapeutic doses of scopolamine. The most serious of these that have been reported are: acute toxic psychosis, including confusion, agitation, speech disorder, hallucinations, paranoia, and delusions. [see Adverse Reactions (6)]

5.6 Specific Populations

Pediatric

A safe and effective dose has not been established in the pediatric population [see Use in Specific Populations (8.4)]. Children are particularly susceptible to the side effects of belladonna alkaloids; including mydriasis, hallucinations, amblyopia, and drug withdrawal syndrome. Neurologic and psychiatric adverse reactions, such as hallucinations, amblyopia and mydriasis have also been reported when one half or one quarter of a patch has been applied.

Elderly

Transderm Scop® should be used with caution in the elderly because of the increased likelihood of CNS effects, such as hallucinations, confusion, dizziness and drug withdrawal syndrome. Clinical trials of Transderm Scop® did not include sufficient number of subjects aged 65 years and older to determine if they respond differently from younger subjects. [see Use in Specific Populations (8.5)]

Renal and Hepatic Impaired

Transderm Scop® should be used with caution in individuals with impaired renal or hepatic functions because of the increased likelihood of CNS effects. Transderm Scop® has not been studied in these populations. [see Use in Specific Populations (8.6)]

5.7 Safety Hazards

Drowsiness

Since drowsiness, disorientation, and confusion may occur with the use of scopolamine, patients should be warned of the possibility and cautioned against engaging in activities that require mental alertness, such as driving a motor vehicle or operating dangerous machinery.

Disorienting Effects

Patients who expect to participate in underwater sports should be cautioned regarding the potentially disorienting effects of scopolamine. [see Patient Counseling Information (17)]

5.8 MRI Skin Burns

Skin burns have been reported at the patch site in several patients wearing an aluminumized transdermal system during a Magnetic Resonance Imaging scan (MRI). Because Transderm Scop® contains aluminum, it is recommended to remove the system before undergoing an MRI.

6 ADVERSE REACTIONS

6.1 Clinical Trials Experience

Because clinical trials are conducted under widely varying conditions, adverse reaction rates observed in the clinical trials of a drug cannot be directly compared to rates in the clinical trials of another drug and may not reflect the rates observed in clinical practice.

Motion Sickness

In motion sickness clinical studies of Transderm Scop®, the most frequent adverse reaction was dry mouth. This occurred in about two thirds of patients on drug. A less frequent adverse drug reaction was drowsiness, which occurred in less than one sixth of patients on drug. Transient impairment of eye accommodation, including blurred vision and dilation of the pupils, was also observed.

Post-Operative Nausea and Vomiting

In a total of five clinical studies in which Transderm Scop® was administered perioperatively to a total of 461 patients where safety was assessed, dry mouth was the most frequently reported adverse drug reaction, which occurred in approximately 29% of patients on drug. Dizziness was reported by approximately 12% of patients on drug. Other adverse drug reactions reported from these studies, with a frequency of ≥3% of patients treated with Transderm Scop® and with a frequency higher than placebo were, in descending order: somnolence, urinary retention, agitation/restlessness, visual impairment, confusion, mydriasis and pharyngitis (see Table 6.1).

Table 6.1 PONV: Adverse Drug Reactions in ≥3% of Patients

	Transderm Scop® (N=461)		Placebo (N=457)	
	n	%	n	%
Adverse Drug Reactions	303	65.7	259	56.7
Dry mouth	133	28.9	72	15.8
Dizziness	57	12.4	33	7.2
Somnolence	36	7.8	16	3.5
Urinary Retention	33	7.2	30	6.6
Agitation	28	6.1	20	4.4
Visual Impairment	23	5.0	12	2.6
Confusion	18	3.9	14	3.1
Mydriasis	16	3.5	2	0.4
Pharyngitis	15	3.3	10	2.2

6.2 Postmarketing Experience

The following adverse drug reactions, further to those reported from clinical trials, have been identified during postapproval use of Transderm Scop®. Because these reactions are reported voluntarily from a population of uncertain size, it is not always possible to reliably estimate their frequency or to confirm a definite causal relationship.

In worldwide marketing with Transderm Scop®, the following adverse drug reactions were reported by body system.

Psychiatric disorders: acute psychosis including: hallucinations disorientation, and paranoia.

Nervous system disorders: headache, amnesia, coordination abnormalities, speech disorder, disturbance in attention, restlessness.

General disorders and administration site conditions: application site burning.

Eye disorders: dry eyes, eye pruritis, angle closure glaucoma, amblyopia, eyelid irritation.

Skin and subcutaneous tissue disorders: rash generalized, skin irritation, erythema.

Renal and urinary disorders: dysuria.

Ear and Labyrinth Disorders: vertigo.

6.3 Drug Withdrawal/Post-Removal Symptoms

Symptoms such as dizziness, nausea, vomiting, abdominal cramps, sweating, headache, mental confusion, muscle weakness, bradycardia and hypotension may occur following abrupt discontinuation of anticholinergic drugs such as Transderm Scop®. Similar symptoms, including disturbances of equilibrium, have been reported in some patients following discontinuation

of use of the Transderm Scop® system. These symptoms usually do not appear until 24 hours or more after the patch has been removed. These symptoms can be severe and may require medical intervention. Some symptoms may be related to adaptation from a motion environment to a motion-free environment.

7 DRUG INTERACTIONS

The absorption of oral medications may be decreased during the concurrent use of scopolamine because of decreased gastric motility and delayed gastric emptying. [see Warnings and Precautions (5.3)]

Scopolamine should be used with caution in patients taking other drugs that are capable of causing CNS effects such as sedatives, tranquilizers, or alcohol. Special attention should be paid to potential interactions with drugs having anticholinergic properties; e.g., other belladonna alkaloids, antihistamines (including meclizine), tricyclic antidepressants, and muscle relaxants.

In vitro studies indicated that the potential for scopolamine to alter the pharmacokinetics of other concomitant medications through inhibition of CYP 1A2, 2C8, 2C9, 2C19, 2D6 and 3A4 or induction of CYP 1A2 and 3A4 is low; however, *in vivo* studies have not been conducted. [see Clinical Pharmacology (12.3)]

7.1 Laboratory Test Interactions

Scopolamine will interfere with the gastric secretion test.

8 USE IN SPECIFIC POPULATIONS

8.1 Pregnancy

Pregnancy Category C

Based on data from one prospective study of Transderm Scop® in cesarean delivery, the rate of newborn adverse events in both the Transderm Scop® and placebo groups were the same. The rates were 10.5% (12 events in 114 newborns) in both treatment groups. None of these events were considered life threatening or drug related. Jaundice was the only adverse event occurring more frequently with Transderm Scop® than placebo: 9 events (7.9%) versus 2 events (1.8%) (p=0.031). Jaundice, a common occurrence in newborns, resolved with ultraviolet light and did not prolong the hospital stay.

There are no adequate and well-controlled studies of Transderm Scop® use during pregnancy. In animal reproduction studies, when pregnant rats and rabbits received scopolamine hydrobromide by daily intravenous injection, no adverse effects were observed in rats. An embryotoxic effect was observed in rabbits at doses producing plasma levels approximately 100 times the levels achieved in humans using a transdermal system. Transderm Scop® should be used during pregnancy only if the potential benefit justifies the potential risk to the fetus and the mother.

8.2 Labor and Delivery

During a clinical study among women undergoing cesarean section treated with Transderm Scop® in conjunction with epidural anesthesia and opiate analgesia, no evidence of CNS depression was found in newborns. [see Clinical Studies (14.2)] Scopolamine administered parenterally to rats and rabbits at doses higher than the dose delivered by Transderm Scop® did not affect uterine contractions or increase the duration of labor. Scopolamine does cross the placenta.

8.3 Nursing Mothers

Scopolamine is excreted in human milk. Caution should be exercised when Transderm Scop® is administered to a nursing woman.

8.4 Pediatric Use

A safe and effective dose has not been established in the pediatric population. [see Warnings and Precautions (5.6)]

8.5 Geriatric Use

Transderm Scop® should be used with caution in the elderly because of the increased likelihood of CNS effects, such as hallucinations, confusion and dizziness. Clinical trials of Transderm Scop® did not include sufficient number of subjects aged 65 years and older to determine if they respond differently from younger subjects. [see Warnings and Precautions (5.6)]

8.6 Renal or Hepatic Impairment

Transderm Scop® should be used with caution in individuals with impaired renal or hepatic functions because of the increased likelihood of CNS effects. [see Warnings and Precautions (5.6)]

9 DRUG ABUSE AND DEPENDENCE

9.1 Controlled Substance Class

Scopolamine is not a controlled substance.

9.2 Abuse

Scopolamine is an antagonist at muscarinic receptors in the cholinergic system. Drugs in this class are not known to have significant abuse potential in humans.

9.3 Dependence

Abrupt termination of Transderm Scop® may result in withdrawal symptoms such as dizziness, nausea, vomiting, abdominal cramps, sweating, headache, mental confusion, muscle weakness, bradycardia and hypotension. [see Adverse Reactions (6.3) and Overdosage (10)] These withdrawal symptoms indicate that anticholinergic drugs, like scopolamine may produce physical dependence. These symptoms can be severe and may require medical intervention.

10 OVERDOSAGE

Because strategies for the management of drug overdose continually evolve, it is strongly recommended that a poison control center be contacted to obtain up-to-date information regarding the management of Transderm Scop® patch overdose. The prescriber should be mindful that antidotes used routinely in the past may no longer be considered optimal treatment. For example, physostigmine, used more or less routinely in the past, is seldom recommended for the routine management of anticholinergic syndromes.

Until up-to-date authoritative advice is obtained, routine supportive measures should be directed to maintaining adequate respiratory and cardiac function.

The signs and symptoms of anticholinergic toxicity include: lethargy, somnolence, coma; confusion; agitation, hallucinations, convulsion; visual disturbance, dry flushed skin, dry mouth, decreased bowel sounds, urinary retention, tachycardia, hypertension, and supraventricular arrhythmias. These symptoms can be severe and may require medical intervention.

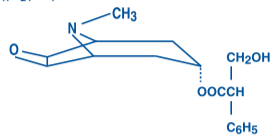
In cases of toxicity remove the patch. Serious symptomatic cases of overdose involving multiple patch applications and/or ingestion may be managed by initially ensuring the patient has an adequate airway, and supporting respiration and circulation. This should be rapidly followed by removal of all patches from the skin and the mouth. If there is evidence of patch ingestion, gastric lavage, endoscopic removal of swallowed patches, or administration of activated charcoal should be considered, as indicated by the clinical situation. In any case where there is serious overdose or signs of evolving acute toxicity, continuous monitoring of vital signs and ECG, establishment of intravenous access, and administration of oxygen are all recommended.

The symptoms of overdose/toxicity due to scopolamine should be carefully distinguished from the occasionally observed syndrome of withdrawal. [see Adverse Reactions (6.3)] Although mental confusion and dizziness may be observed with both acute toxicity and withdrawal, other characteristic findings differ: tachyarrhythmias, dry skin, and decreased bowel sounds suggest anticholinergic toxicity, while bradycardia, headache, nausea and abdominal cramps, and sweating suggest

post-removal withdrawal. Obtaining a careful history is crucial to making the correct diagnosis.

11 DESCRIPTION

The Transderm Scop® (scopolamine) transdermal system is a circular, flat, tan-colored patch imprinted with "Scopolamine 1 mg/3 days", designed for continuous release of scopolamine following application to an area of intact skin on the head, behind the ear. Each system contains 1.5 mg of scopolamine base. Scopolamine is α -(hydroxymethyl) benzeneacetic acid 9-methyl-3-oxa-9-azatricyclo [3.3.1.0^{2,4}] non-7-yl ester. The empirical formula is C₁₇H₂₁NO₄ and its structural formula is:



Scopolamine is a viscous liquid that has a molecular weight of 303.35 and a pKa of 7.55-7.81. The Transderm Scop® system is a film 0.2 mm thick and 2.5 cm², with four layers. Proceeding from the visible surface towards the surface attached to the skin, these layers are: (1) a backing layer of tan-colored, aluminized, polyester film; (2) a drug reservoir of scopolamine, light mineral oil, and polyisobutylene; (3) a microporous polypropylene membrane that controls the rate of delivery of scopolamine from the system to the skin surface; and (4) an adhesive formulation of mineral oil, polyisobutylene, and scopolamine. A protective peel strip of siliconized polyester, which covers the adhesive layer, is removed before the system is used. The inactive components, light mineral oil (12.4 mg) and polyisobutylene (11.4 mg), are not released from the system.

Cross section of the system:



12 CLINICAL PHARMACOLOGY

12.1 Mechanism of Action

Scopolamine, a belladonna alkaloid, is an anticholinergic agent. Scopolamine acts: i) as a competitive inhibitor at postsynaptic muscarinic receptor sites of the parasympathetic nervous system, and ii) on smooth muscles that respond to acetylcholine but lack cholinergic innervation. It has been suggested that scopolamine acts in the central nervous system (CNS) by blocking cholinergic transmission from the vestibular nuclei to higher centers in the CNS and from the reticular formation to the vomiting center. Scopolamine can inhibit the secretion of saliva and sweat, decrease gastrointestinal secretions and motility, cause drowsiness, dilate the pupils, increase heart rate, and depress motor function.

12.2 Pharmacokinetics

The pharmacokinetics of scopolamine delivered via the system are due to the characteristics of both the drug and dosage form. The system is formulated to deliver *in vivo* approximately 1 mg of scopolamine at an approximately constant rate to the systemic circulation over 3 days. Upon application to the postauricular skin, an initial priming dose of scopolamine is released from the adhesive layer to saturate skin-binding sites. The subsequent delivery of scopolamine to the blood is determined by the rate controlling membrane and is designed to produce stable plasma levels in a therapeutic range. Following removal of the used system, there is some degree of continued systemic absorption of scopolamine bound in the skin layers.

Absorption

Scopolamine is well absorbed percutaneously. Following application to the skin behind the ear, circulating plasma levels are detected within 4 hours with peak levels being obtained, on average, within 24 hours. The average plasma concentration produced is 87 pg/mL (0.28 nM) for free scopolamine and 354 pg/mL for total scopolamine (free + conjugates).

Distribution

The distribution of scopolamine is not well characterized. It crosses the placenta and the blood brain barrier and may be reversibly bound to plasma proteins.

Metabolism and Excretion

The exact elimination pattern of scopolamine has not been determined. Following patch removal, plasma levels of scopolamine decline in a log linear fashion with an observed half-life of 9.5 hours. Less than 10% of the total dose is excreted in the urine as the parent drug and metabolites over 108 hours. Scopolamine is extensively metabolized and conjugated with less than 5% of the total dose appearing unchanged in the urine. The enzymes responsible for metabolizing scopolamine are unknown.

Drug Interaction

An *in vitro* study using human hepatocytes examined the induction of CYP1A2 and CYP3A4 by scopolamine. Scopolamine did not induce CYP1A2 and CYP3A4 isoenzymes at the concentrations up to 10 nM. In an *in vitro* study using human liver microsomes which evaluated the inhibition of CYP1A2, 2C8, 2C9, 2C19, 2D6 and 3A4, scopolamine did not inhibit these cytochrome P450 isoenzymes at the concentrations up to 1 mM.

13 NONCLINICAL PHARMACOLOGY

13.1 Carcinogenesis, Mutagenesis, Impairment of Fertility

No long-term studies in animals have been conducted to evaluate the carcinogenic potential of scopolamine. The mutagenic potential of scopolamine has not been evaluated.

Fertility studies were performed in female rats and revealed no evidence of impaired fertility or harm to the fetus due to scopolamine hydrobromide administered by daily subcutaneous injection. Maternal body weights were reduced in the highest-dose group (plasma level approximately 500 times the level achieved in humans using a transdermal system). However, fertility studies in male animals were not performed.

14 CLINICAL STUDIES

14.1 Motion Sickness

In 195 adult subjects of different racial origins who participated in clinical efficacy studies at sea or in a controlled motion environment, there was a 75% reduction in the incidence of motion-induced nausea and vomiting.

14.2 Post-Operative Nausea and Vomiting

In two pivotal clinical efficacy studies in 391 adult female patients undergoing cesarean section or gynecological surgery with anesthesia and opiate analgesia, 66% of those treated with Transderm Scop® (compared to only 46% of those receiving placebo) reported no retching/vomiting within the 24-hour period following administration of anesthesia/opiate analgesia. When the need for additional antiemetic medication was assessed during the same period, there was no need for medication in 76% of patients treated with Transderm Scop® as compared to 59% of placebo-treated patients.

16 HOW SUPPLIED/STORAGE AND HANDLING

The Transderm Scop® system is a tan-colored, circular patch with an imprint "Scopolamine 1 mg/3 days", 2.5 cm², on a clear, oversized, hexagonal peel strip, which is removed prior to use.

Each Transderm Scop® system contains 1.5 mg of scopolamine and is formulated to deliver *in vivo* approximately 1 mg of scopolamine over 3 days. Transderm Scop® is available in packages of 10 and 24 patches. Each patch is foil wrapped. Patient instructions are included. [See Patient Counseling Information (17)]

- 1 Package (10 patches) NDC 10019-553-03
- 1 Package (24 patches) NDC 10019-553-04

Storage

The system should be stored at controlled room temperature between 20°-25°C (68°-77°F).

Handling

Since scopolamine can cause temporary dilation of the pupils and blurred vision if it comes in contact with the eyes, patients should be strongly advised to wash their hands thoroughly with soap and water immediately after handling the patch. In addition, it is important that used patches be disposed of properly to avoid contact with children or pets. [See Dosage and Administration (2), Warnings and Precautions (5.2), and Patient Counseling Information (17)]

17 PATIENT COUNSELING INFORMATION

See FDA-approved patient labeling (Patient Information)

Please read this instruction sheet carefully before opening the system package.

Transderm Scop® Transdermal System

Generic Name: scopolamine, pronounced skoe-POL-ah-meen

Elderly patients should be informed that Transderm Scop® may cause a greater likelihood of CNS effects, such as hallucinations, confusion, dizziness and drug withdrawal syndrome and to seek immediate medical care if they become confused, disoriented or dizzy while wearing the patch or after removing.

Patients should be informed that since Transderm Scop® may cause drowsiness, disorientation and confusion they should avoid engaging in activities that require mental alertness such as driving a motor vehicle or operating dangerous machinery.

Patients who expect to participate in underwater sports should be cautioned regarding the potentially disorienting effects of Transderm Scop®.

Because of the possibility of drowsiness, disorientation and confusion, patients should be informed that they should avoid drinking alcohol. In addition, patients should be informed that the following medications should be used with caution when taking Transderm Scop®:

- sedatives or tranquilizers
- drugs with anticholinergic properties (e.g., other belladonna alkaloids),
- antihistamines (including medicine)
- tricyclic antidepressants
- muscle relaxants

Patients with the following conditions should be informed about the chance of developing serious reactions with Transderm Scop®:

- patients with open angle glaucoma (may cause an increase in intraocular pressure)
- patients with impaired kidney or liver function (increased likelihood of CNS effects)
- patients with a history of seizures or psychosis (can potentially worsen both disorders)
- patients with obstruction at the level of the pylorus, which is the outlet of the stomach, or urinary bladder neck obstruction (may cause difficulties in urinating)
- patients suspected of having intestinal obstruction
- pregnant or nursing mothers

Patients should be informed that if they remove the Transderm Scop® patch suddenly before treatment is complete, the following withdrawal symptoms may occur: dizziness, nausea, vomiting, abdominal cramps, sweating, headache, mental confusion, muscle weakness, slow heart rate and low blood pressure. Patients should be instructed to seek immediate medical care if they develop any of these symptoms after removing Transderm Scop®.

Patients should be informed that Transderm Scop® can cause temporary dilation of the pupils and blurred vision if it comes in contact with the eyes. Patients should be informed to wash their hands thoroughly with soap and water immediately after handling the patch. In addition, patients should be informed that used patches must be disposed of properly to avoid contact with children or pets.

Patients should be informed that skin burns have been reported at the patch site in several patients wearing an aluminized transdermal system during a Magnetic Resonance Imaging scan (MRI). Because Transderm Scop® contains aluminum, patients should be advised to remove the system before undergoing an MRI.

- Patients should be advised to use only one patch at a time.
- Patients should be advised not to cut the patch.

FDA-Approved Patient Labeling

PATIENT INFORMATION

Transderm Scop®, pronounced tran(t)s-derm skop (scopolamine) transdermal system patch

Read this Patient Information before you start using Transderm Scop® and each time you get a refill. There may be new information. This information does not take the place of talking to your doctor about your medical condition or your treatment.

What is Transderm Scop®?

The Transderm Scop® patch is a prescription medicine used for adults to:

- help prevent nausea and vomiting from motion sickness
- help prevent nausea and vomiting from anesthesia or taking opioid pain medicines after surgery

It is not known if Transderm Scop® is safe or effective in children.

Who should not use Transderm Scop®?

Do not use Transderm Scop® if you:

- have an eye problem called angle closure glaucoma
- if you are allergic to any of the ingredients in Transderm Scop® or other medicines called belladonna alkaloids. See the end of this leaflet for a list of the ingredients in Transderm Scop®. Ask your doctor if you are not sure.

What should I tell my doctor before using Transderm Scop®?

Before you use Transderm Scop®, tell your doctor if you:

- are scheduled to have a gastric secretion test
- have glaucoma (increased pressure in the eye)
- have liver or kidney problems
- have problems with your stomach or intestines
- have trouble urinating
- have a history of seizures or psychosis
- have any other medical conditions
- are pregnant or plan to become pregnant. It is not known if Transderm Scop® can harm your unborn baby.
- are breast-feeding or plan to breast-feed. Transderm Scop® can pass into your breast milk and may harm your baby. Talk to your doctor about the best way to feed your baby if you use Transderm Scop®.

Tell your doctor about all the medicines you take, including prescription and non-prescription medicines, vitamins and herbal supplements. Transderm Scop® may affect the way other medicines work, and other medicines may affect how Transderm Scop® works. Medicines that you take by mouth may not be absorbed well while you use Transderm Scop®.

Especially tell your doctor if you take:

- a sedative or tranquilizer (medicines that make you sleepy)
- an antidepressant medicine
- an anticholinergic medicine, such as an allergy or cold medicine, a medicine to treat bladder or bowel spasms, certain asthma medicines, or other medicines for motion sickness.

Ask your doctor if you are not sure if your medicine is one that is listed above.

Know the medicines you take. Keep a list of them and show it to your doctor or pharmacist when you get a new medicine.

How should I use Transderm Scop®?

Use Transderm Scop® exactly as your doctor tells you to use it. Transderm Scop® is a tan-colored, circle shaped patch with an imprint of "Scopolamine 1 mg/3 days". Wear only one patch at any time.

Do not cut the patch.

To help prevent nausea and vomiting from motion sickness:

- Apply one Transderm Scop® patch to your skin on a hairless area behind one ear at least 4 hours before the activity to prevent nausea and vomiting.
- If the treatment is needed for longer than 3 days, remove the patch from the hairless area behind your ear. Get a new Transderm Scop® patch and place it on the hairless area behind your other ear.

To help prevent nausea and vomiting after surgery:

- Follow your doctor's instructions about when to apply Transderm Scop® before your scheduled surgery.
- The Transderm Scop® patch should be left in place for 24 hours after surgery. After 24 hours the patch should be removed and thrown away.

Apply Transderm Scop® as follows:

- Inside the Transderm Scop® package, you will find one Transderm Scop® patch. An imprinted, tan-colored patch with a metallic (silver) sticky surface is adhered to a clear disposable backing (See Figure 1).

1. Select a hairless area of skin behind one of your ears. Avoid areas on your skin that may have cuts, pain or tenderness. Wipe the area of your skin with a clean, dry tissue.

2. Cut along dotted line on the Transderm Scop® package to open (See Figure 2).

3. Remove the clear plastic backing from the imprinted, tan-colored round patch (See Figure 3).

4. Avoid touching the metallic adhesive (sticky) surface on the patch with your hands (See Figure 4).

5. Apply the metallic adhesive surface of the patch firmly to the dry area of skin behind your ear. The imprinted, tan-colored side of the patch should be facing up and showing (See Figure 5). Wash your hands with soap and water right away after applying the patch, so that any medicine from the patch that gets on your hands will not get into your eyes.

Apply Transderm Scop® as follows:

Inside the Transderm Scop® package, you will find one Transderm Scop® patch. An imprinted, tan-colored patch with a metallic (silver) sticky surface is adhered to a clear disposable backing (See Figure 1).

1. Select a hairless area of skin behind one of your ears. Avoid areas on your skin that may have cuts, pain or tenderness. Wipe the area of your skin with a clean, dry tissue.

2. Cut along dotted line on the Transderm Scop® package to open (See Figure 2).

3. Remove the clear plastic backing from the imprinted, tan-colored round patch (See Figure 3).

4. Avoid touching the metallic adhesive (sticky) surface on the patch with your hands (See Figure 4).

5. Apply the metallic adhesive surface of the patch firmly to the dry area of skin behind your ear. The imprinted, tan-colored side of the patch should be facing up and showing (See Figure 5). Wash your hands with soap and water right away after applying the patch, so that any medicine from the patch that gets on your hands will not get into your eyes.

Apply Transderm Scop® as follows:

Inside the Transderm Scop® package, you will find one Transderm Scop® patch. An imprinted, tan-colored patch with a metallic (silver) sticky surface is adhered to a clear disposable backing (See Figure 1).

1. Select a hairless area of skin behind one of your ears. Avoid areas on your skin that may have cuts, pain or tenderness. Wipe the area of your skin with a clean, dry tissue.

2. Cut along dotted line on the Transderm Scop® package to open (See Figure 2).

3. Remove the clear plastic backing from the imprinted, tan-colored round patch (See Figure 3).

4. Avoid touching the metallic adhesive (sticky) surface on the patch with your hands (See Figure 4).

5. Apply the metallic adhesive surface of the patch firmly to the dry area of skin behind your ear. The imprinted, tan-colored side of the patch should be facing up and showing (See Figure 5). Wash your hands with soap and water right away after applying the patch, so that any medicine from the patch that gets on your hands will not get into your eyes.

Apply Transderm Scop® as follows:

Inside the Transderm Scop® package, you will find one Transderm Scop® patch. An imprinted, tan-colored patch with a metallic (silver) sticky surface is adhered to a clear disposable backing (See Figure 1).

1. Select a hairless area of skin behind one of your ears. Avoid areas on your skin that may have cuts, pain or tenderness. Wipe the area of your skin with a clean, dry tissue.

2. Cut along dotted line on the Transderm Scop® package to open (See Figure 2).

3. Remove the clear plastic backing from the imprinted, tan-colored round patch (See Figure 3).

4. Avoid touching the metallic adhesive (sticky) surface on the patch with your hands (See Figure 4).

5. Apply the metallic adhesive surface of the patch firmly to the dry area of skin behind your ear. The imprinted, tan-colored side of the patch should be facing up and showing (See Figure 5). Wash your hands with soap and water right away after applying the patch, so that any medicine from the patch that gets on your hands will not get into your eyes.

Apply Transderm Scop® as follows:

Inside the Transderm Scop® package, you will find one Transderm Scop® patch. An imprinted, tan-colored patch with a metallic (silver) sticky surface is adhered to a clear disposable backing (See Figure 1).

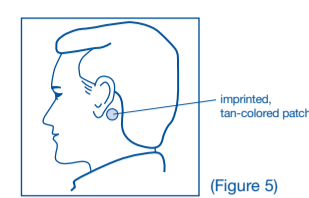
1. Select a hairless area of skin behind one of your ears. Avoid areas on your skin that may have cuts, pain or tenderness. Wipe the area of your skin with a clean, dry tissue.

2. Cut along dotted line on the Transderm Scop® package to open (See Figure 2).

3. Remove the clear plastic backing from the imprinted, tan-colored round patch (See Figure 3).

4. Avoid touching the metallic adhesive (sticky) surface on the patch with your hands (See Figure 4).

5. Apply the metallic adhesive surface of the patch firmly to the dry area of skin behind your ear. The imprinted, tan-colored side of the patch should be facing up and showing (See Figure 5). Wash your hands with soap and water right away after applying the patch, so that any medicine from the patch that gets on your hands will not get into your eyes.



(Figure 5)

After removing the patch, be sure to wash your hands and the area behind your ear thoroughly with soap and water. Note that the used patch will still contain some of the active ingredient after use. To avoid accidental contact or ingestion by children or pets, fold the used patch in half with the sticky side together. Dispose in the trash out of the reach of children and pets.

If you use too much Transderm Scop®, call your doctor or local poison control center, or go to the nearest hospital emergency room right away.

What should I avoid while using Transderm Scop®?

- You should not drink alcohol while using Transderm Scop®. It can increase your chances of having serious side effects.
- You should not drive, operate heavy machinery, or do other dangerous activities until you know how Transderm Scop® affects you.
- You should not use Transderm Scop® during a Magnetic Resonance Imaging scan (MRI). Remove Transderm Scop® patch before undergoing an MRI; it can cause your skin to burn.
- You should be careful if you use Transderm Scop® while you participate in watersports because you may feel lost or confused (disoriented).
- Limit contact with water while swimming and bathing because the Transderm Scop® patch may fall off. If the patch falls off, throw it away and apply a new one on the hairless area behind your other ear.

What are the possible side effects of Transderm Scop®?

Transderm Scop® may cause serious side effects, including:

- **angle closure glaucoma.** If you have open angle glaucoma and use Transderm Scop®, remove the patch and call a doctor right away if you get pain and reddening of your eyes with an increase in the size of your pupil (the small dark circle in the eye).
- **temporary increase in the size of your pupil and blurry vision,** especially if Transderm Scop® comes in contact with your eyes
- **difficulties in urinating**
- **difficulties in food passing from the stomach to the small intestines, which may cause abdominal pain, nausea or vomiting.**
- **worsening of seizures.** Tell your doctor about any worsening of seizures while using Transderm Scop®.
- **an unusual reaction called acute psychosis.** Tell your doctor if you have any of these symptoms:

- confusion
- agitation
- rambling speech
- hallucinations (seeing or hearing things that are not there)
- paranoid behaviors and delusions (false belief in something)

• **skin burns at the site of the patch.** This can happen during a medical test called a Magnetic Resonance Imaging scan (MRI). Transderm Scop® contains aluminum and should be removed from your skin before you have an MRI.

The most common side effects of using Transderm Scop® include:

- dry mouth
- drowsiness
- disorientation (confusion)
- blurred vision
- pharyngitis
- memory trouble
- dizziness
- restlessness
- agitation
- problems urinating
- skin rashes or redness, application site burning
- dry itchy, or reddened whites of the eyes, and eye pain

Symptoms when removing Transderm Scop®. Some people may have certain symptoms 24 hours or more after removing Transderm Scop®. These symptoms may include:

- dizziness
- nausea
- vomiting
- headache
- problems with balance and walking
- decrease in blood pressure
- muscle weakness
- decrease in heart rate

Tell your doctor if you have any side effect that bothers you or that does not go away. These are not all the possible side effects of Transderm Scop®. For more information, ask your doctor or pharmacist.

Call your doctor for medical advice about side effects. You may report side effects to FDA at 1-800-FDA-1088.

How should I store Transderm Scop®?

- Store Transderm Scop® at room temperature between 68°-77°F (20°-25°C) until you are ready to use it.
- **Keep Transderm Scop® and all medicines out of reach of children.**

General Information about Transderm Scop®

Medicines are sometimes prescribed for purposes other than those listed in a patient information leaflet. Do not use Transderm Scop® for a condition for which it was not prescribed. Do not give Transderm Scop® to other people, even if they have the same symptoms you have. It may harm them.

This patient information leaflet summarizes the most important information about Transderm Scop®. If you would like more information, talk with your doctor. You can ask your pharmacist or doctor for information about Transderm Scop® that is written for the health professionals.

For more information, go to www.transdermscop.com or call 1-800-398-5876.

What are the ingredients in the Transderm Scop® patch?

Active ingredient: Scopolamine
Inactive ingredients: light mineral oil polyisobutylene and aluminized polyester film

Marketed by **Baxter Healthcare Corporation**
Deerfield, IL 60015 USA
Manufactured by ALZA Corporation, Vacaville, CA 95688 for **Sandoz Inc.**, Princeton, NJ 08540

For Product Inquiry 1 800 ANA DRUG
(1-800-262-3784)

Rev.: December 2016

Printed in U.S.A.

07-19-75-537

11423

PATIENT INFORMATION

Transderm Scöp®,
pronounced
tran(t)s-derm sköp
(scopolamine)
transdermal system patch



Tell your doctor about all the medicines you take, including prescription and non-prescription medicines, vitamins and herbal supplements. Transderm Scöp® may affect the way other medicines work, and other medicines may affect how Transderm Scöp® works. Medicines that you take by mouth may not be absorbed well while you use Transderm Scöp®.

Especially tell your doctor if you take:

- a sedative or tranquilizer (medicines that make you sleepy)
- an antidepressant medicine
- an anticholinergic medicine, such as an allergy or cold medicine, a medicine to treat bladder or bowel spasms, certain asthma medicines, or other medicines for motion sickness.

Ask your doctor if you are not sure if your medicine is one that is listed above.

Know the medicines you take. Keep a list of them and show it to your doctor or pharmacist when you get a new medicine.

How should I use Transderm Scöp®?

Use Transderm Scöp® exactly as your doctor tells you to use it.

Transderm Scöp® is a tan-colored, circle shaped patch with an imprint of "Scopolamine 1 mg/3 days".

Wear only one patch at any time.

Do not cut the patch.

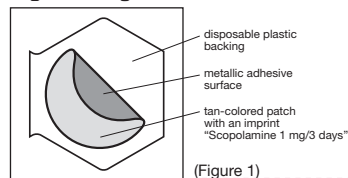
To help prevent nausea and vomiting from motion sickness:

- Apply one Transderm Scöp® patch to your skin on a hairless area behind one ear at least 4 hours before the activity to prevent nausea and vomiting.
- If the treatment is needed for longer than 3 days, remove the patch from the hairless area behind your ear. Get a new Transderm Scöp® patch and place it on the hairless area behind your other ear.

To help prevent nausea and vomiting after surgery:

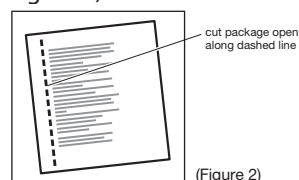
- Follow your doctor's instructions about when to apply Transderm Scöp® before your scheduled surgery.
- The Transderm Scöp® patch should be left in place for 24 hours after surgery. After 24 hours the patch should be removed and thrown away.

Apply Transderm Scöp® as follows: Inside the Transderm Scöp® package, you will find one Transderm Scöp® patch. An imprinted, tan-colored patch with a metallic (silver) sticky surface is adhered to a clear disposable backing (See Figure 1).



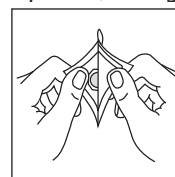
(Figure 1)

1. Select a hairless area of skin behind one of your ears. Avoid areas on your skin that may have cuts, pain or tenderness. Wipe the area of your skin with a clean, dry tissue.
2. Cut along dotted line on the Transderm Scöp® package to open (See Figure 2).



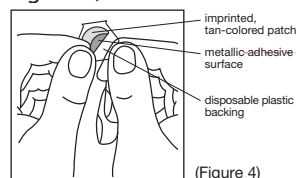
(Figure 2)

3. Remove the clear plastic backing from the imprinted, tan-colored round patch (See Figure 3).



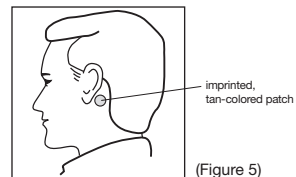
(Figure 3)

4. Avoid touching the metallic adhesive (sticky) surface on the patch with your hands (See Figure 4).



(Figure 4)

5. Apply the metallic adhesive surface of the patch firmly to the dry area of skin behind your ear. The imprinted, tan-colored side of the patch should be facing up and showing (See Figure 5). Wash your hands with soap and water right away after applying the patch, so that any medicine from the patch that gets on your hands will not get into your eyes.



(Figure 5)

Read this Patient Information before you start using Transderm Scöp® and each time you get a refill. There may be new information. This information does not take the place of talking to your doctor about your medical condition or your treatment.

What is Transderm Scöp®?

The Transderm Scöp® patch is a prescription medicine used for adults to:

- help prevent nausea and vomiting from motion sickness
- help prevent nausea and vomiting from anesthesia or taking opioid pain medicines after surgery

It is not known if Transderm Scöp® is safe or effective in children.

Who should not use Transderm Scöp®?

Do not use Transderm Scöp® if you:

- have an eye problem called angle closure glaucoma
- if you are allergic to any of the ingredients in Transderm Scöp® or other medicines called belladonna alkaloids. See the end of this leaflet for a list of the ingredients in Transderm Scöp®. Ask your doctor if you are not sure.

What should I tell my doctor before using Transderm Scöp®?

Before you use Transderm Scöp®, tell your doctor if you:

- are scheduled to have a gastric secretion test
- have glaucoma (increased pressure in the eye)
- have liver or kidney problems
- have problems with your stomach or intestines
- have trouble urinating
- have a history of seizures or psychosis
- have any other medical conditions
- are pregnant or plan to become pregnant. It is not known if Transderm Scöp® can harm your unborn baby.
- are breast-feeding or plan to breast-feed. Transderm Scöp® can pass into your breast milk and may harm your baby. Talk to your doctor about the best way to feed your baby if you use Transderm Scöp®.

After removing the patch, be sure to wash your hands and the area behind your ear thoroughly with soap and water. Note that the used patch will still contain some of the active ingredient after use. To avoid accidental contact or ingestion by children or pets, fold the used patch in half with the sticky side together. Dispose in the trash out of the reach of children and pets.

If you use too much Transderm Scöp®, call your doctor or local poison control center, or go to the nearest hospital emergency room right away.

What should I avoid while using Transderm Scöp®?

- You should not drink alcohol while using Transderm Scöp®. It can increase your chances of having serious side effects.
- You should not drive, operate heavy machinery, or do other dangerous activities until you know how Transderm Scöp® affects you.
- You should not use Transderm Scöp® during a Magnetic Resonance Imaging scan (MRI). Remove Transderm Scöp® patch before undergoing an MRI; it can cause your skin to burn.
- You should be careful if you use Transderm Scöp® while you participate in watersports because you may feel lost or confused (disoriented).
- Limit contact with water while swimming and bathing because the Transderm Scöp® patch may fall off. If the patch falls off, throw it away and apply a new one on the hairless area behind your other ear.

What are the possible side effects of Transderm Scöp®?

Transderm Scöp® may cause serious side effects, including:

- **angle closure glaucoma.** If you have open angle glaucoma and use Transderm Scöp®, remove the patch and call a doctor right away if you get pain and reddening of your eyes with an increase in the size of your pupil (the small dark circle in the eye).
- **temporary increase in the size of your pupil and blurry vision,** especially if Transderm Scöp® comes in contact with your eyes
- **difficulties in urinating**
- **difficulties in food passing from the stomach to the small intestines, which may cause abdominal pain, nausea or vomiting.**
- **worsening of seizures.** Tell your doctor about any worsening of seizures while using Transderm Scöp®.



• an unusual reaction called acute psychosis: Tell your doctor if you have any of these symptoms:

- confusion
- agitation
- rambling speech
- hallucinations (seeing or hearing things that are not there)
- paranoid behaviors and delusions (false belief in something)

• skin burns at the site of the patch. This can happen during a medical test called a Magnetic Resonance Imaging scan (MRI). Transderm Scöp® contains aluminum and should be removed from your skin before you have an MRI.

The most common side effects of using Transderm Scöp® include:

- dry mouth
- drowsiness
- disorientation (confusion)
- blurred vision
- pharyngitis
- memory trouble
- dizziness
- restlessness
- agitation
- problems urinating
- skin rashes or redness, application site burning
- dry itchy, or reddened whites of the eyes, and eye pain

Symptoms when removing Transderm Scöp®. Some people may have certain symptoms 24 hours or more after removing Transderm Scöp®. These symptoms may include:

- dizziness
- nausea
- vomiting
- headache
- problems with balance and walking
- decrease in blood pressure
- muscle weakness
- decrease in heart rate

Tell your doctor if you have any side effect that bothers you or that does not go away. These are not all the possible side effects of Transderm Scöp®. For more information, ask your doctor or pharmacist.

Call your doctor for medical advice about side effects. You may report side effects to FDA at 1-800-FDA-1088.

How should I store Transderm Scöp®?

- Store Transderm Scöp® at room temperature between 68°-77°F (20°-25°C) until you are ready to use it.
- **Keep Transderm Scöp® and all medicines out of reach of children.**

General Information about Transderm Scöp®

Medicines are sometimes prescribed for purposes other than those listed in a patient information leaflet. Do not use Transderm Scöp® for a condition for which it was not prescribed. Do not give Transderm Scöp® to other people, even if they have the same symptoms you have. It may harm them.

This patient information leaflet summarizes the most important information about Transderm Scöp®. If you would like more information, talk with your doctor. You can ask your pharmacist or doctor for information about Transderm Scöp® that is written for the health professionals.

For more information, go to www.transdermscop.com or call 1-800-525-8747.

What are the ingredients in the Transderm Scöp® patch?

Active ingredient: Scopolamine

Inactive ingredients: light mineral oil polyisobutylene and aluminized polyester film

Marketed by **Baxter Healthcare Corporation**
Deerfield, IL 60015 USA
Manufactured by ALZA Corporation
Vacaville, CA 95688 for
Sandoz Inc., Princeton, NJ 08540

For Product Inquiry 1 800 ANA DRUG
(1-800-262-3784)

Rev.: December 2016

07-19-75-538

11424



David
Lewis

Digitally signed by David Lewis

Date: 7/07/2017 05:47:27PM

GUID: 508da72000029f287fa31e664741b577

