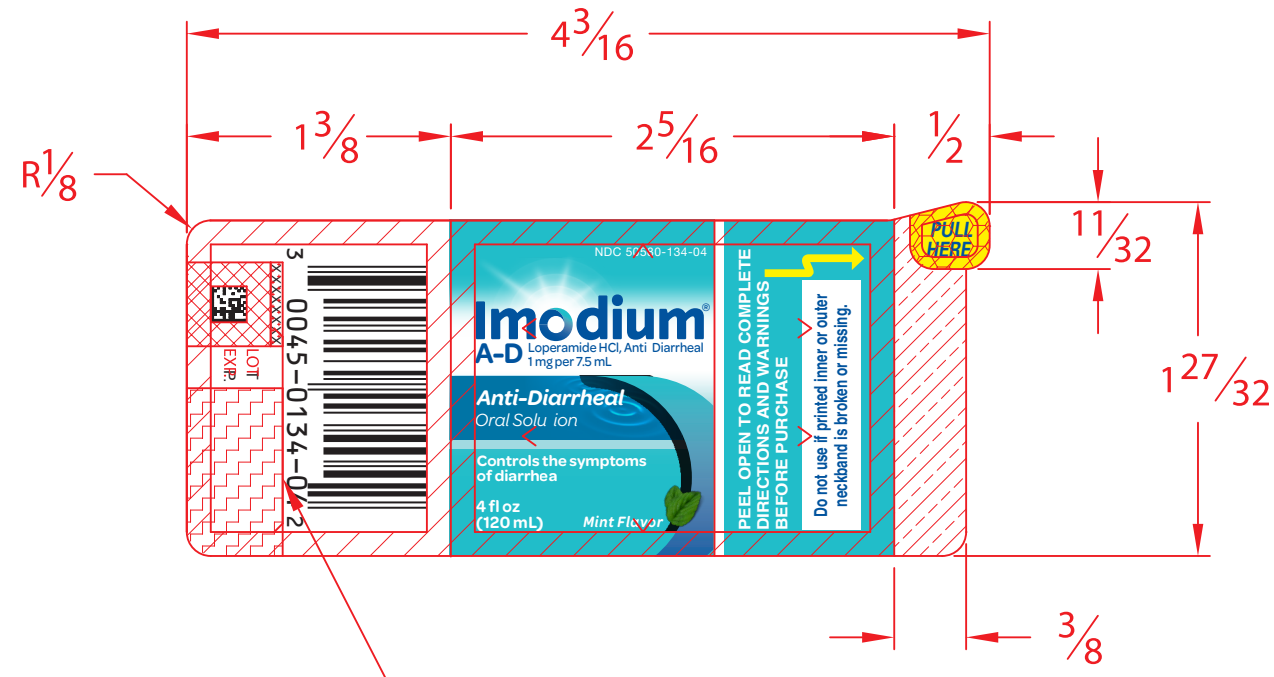
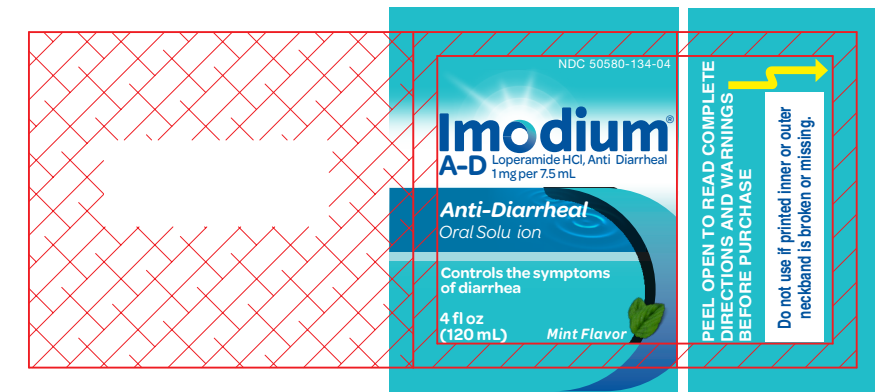
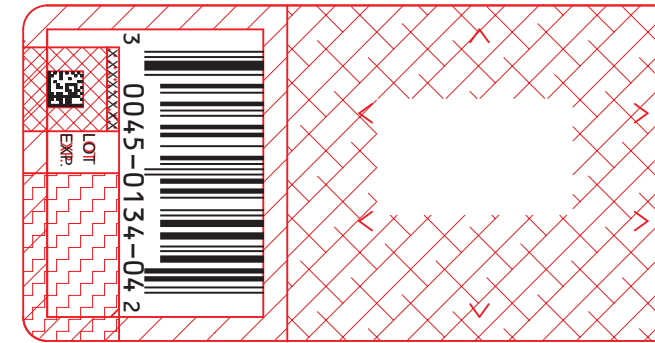


COMPOSITE VIEW FOR REVIEW ONLY:



TAMPER SLIT TO CUT THROUGH LAMINATION LAYER ONLY

UNWIND 4



Drug Facts

Active ingredient (in each 7.5 mL) Purpose
Loperamide HCl 1 mg.....Anti-diarrheal

Use Controls symptoms of diarrhea, including Traveler's Diarrhea

Warnings
Allergy alert: Do not use if you have ever had a rash or other allergic reaction to loperamide HCl
Do not use if you have bloody or black stool
Ask a doctor before use if you have
fever mucus in the stool a history of liver disease
Ask a doctor or pharmacist before use if you are taking antibiotics

Drug Facts (continued)
Questions or comments?
call 1-877-895-3665 (toll-free) or 215-273-8755 (collect)

Active ingredient made in Italy
Distributed by:
JOHNSON & JOHNSON CONSUMER INC.
McNeil Consumer Healthcare Division
Fort Washington, PA 19034 USA
©J&JCI 2015

Imodium® A-D Loperamide HCl, Anti-Diarrheal
1 mg per 7.5 mL
www.imodium.com

PAGE 2

PAGE 7

Drug Facts (continued)

Other information
■ each 30 mL contains: sodium 16 mg
■ store between 20-25°C (68-77°F)
■ do not use if printed inner or outer neckband is broken or missing

Inactive ingredients
anhydrous citric acid, caramel color, D&C yellow no. 10, FD&C blue no. 1, flavor, glycerin, microcrystalline cellulose and carboxymethylcellulose sodium, polyethylene glycol, purified water, simethicone emulsion, sodium benzoate, sucralose, titanium dioxide, xanthan gum

Drug Facts (continued)
When using this product tiredness, drowsiness or dizziness may occur. Be careful when driving or operating machinery.
Stop use and ask a doctor if
■ symptoms get worse
■ diarrhea lasts for more than 2 days
■ you get abdominal swelling or bulging.
These may be signs of a serious condition.
If pregnant or breast-feeding, ask a health professional before use.
Keep out of reach of children. In case of overdose, get medical help or contact a Poison Control Center right away. (1-800-222-1222)

PAGE 6

PAGE 3

Drug Facts (continued)

Directions
■ drink plenty of clear fluids to help prevent dehydration caused by diarrhea
■ find right dose on chart. If possible, use weight to dose; otherwise use age.
■ shake well before using
■ use only enclosed dosing cup specifically designed for use with this product. Do not use any other dosing device.
■ mL = milliliter

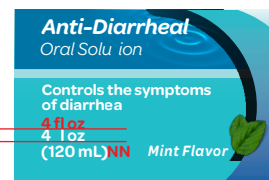
adults and children 12 years and over	30 mL after the first loose stool; 15 mL after each subsequent loose stool; but no more than 60 mL in 24 hours
children 9-11 years (60-95 lbs)	15 mL after first loose stool; 7.5 mL after each subsequent loose stool; but no more than 45 mL in 24 hours
children 6-8 years (48-59 lbs)	15 mL after first loose stool; 7.5 mL after each subsequent loose stool; but no more than 30 mL in 24 hours
children under 6 years (up to 47 lbs)	ask a doctor

Drug Facts (continued)

PAGE 4

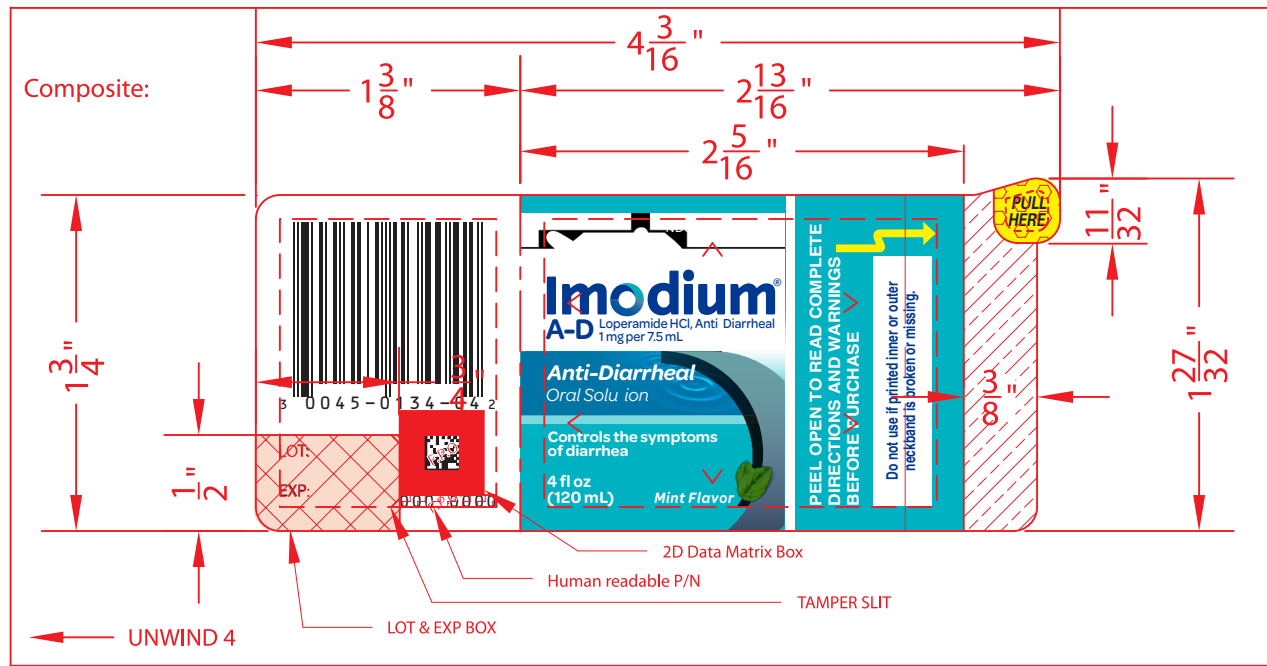
PAGE 5

PDP = 2.41 square inches



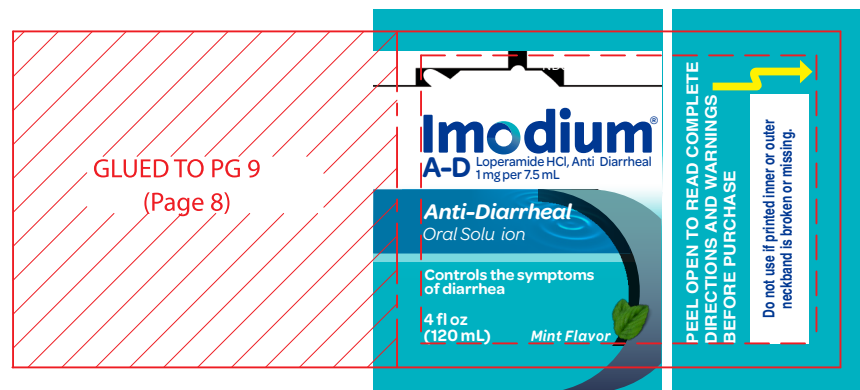
Fraction - Decimal Conversion Chart

Fraction	Inches
$\frac{1}{16}$.0625
$\frac{1}{8}$.125
$\frac{3}{16}$.1875

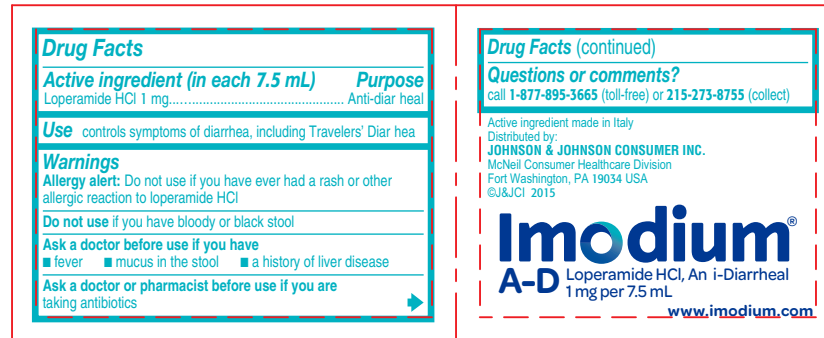


Base Label

BOOKLET PAGES:

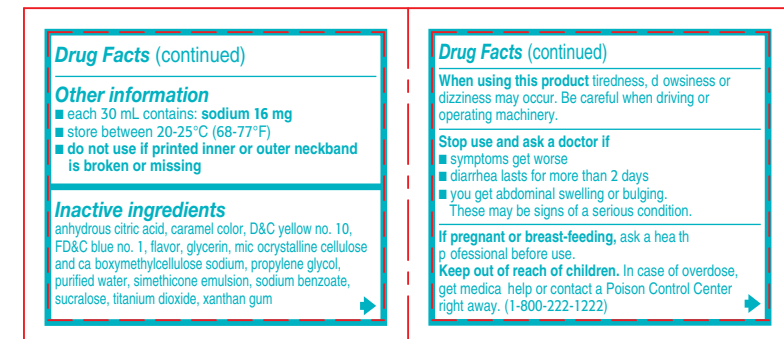


Cover Page 1



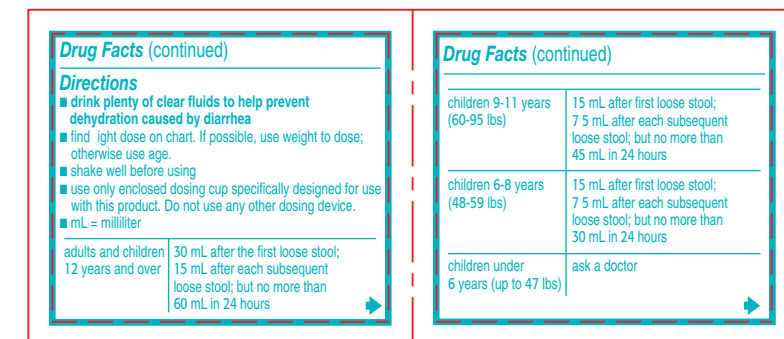
Page 2

Page 7



Page 6

Page 3



Page 4

Page 5

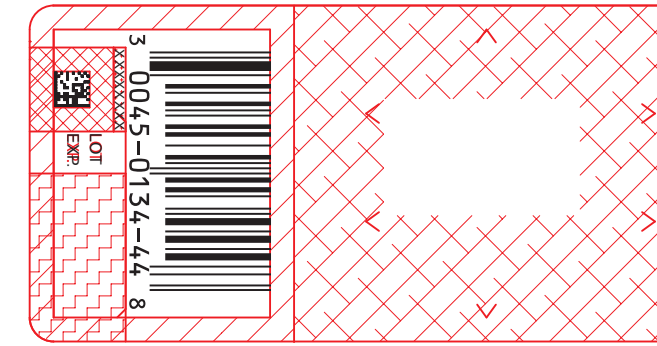
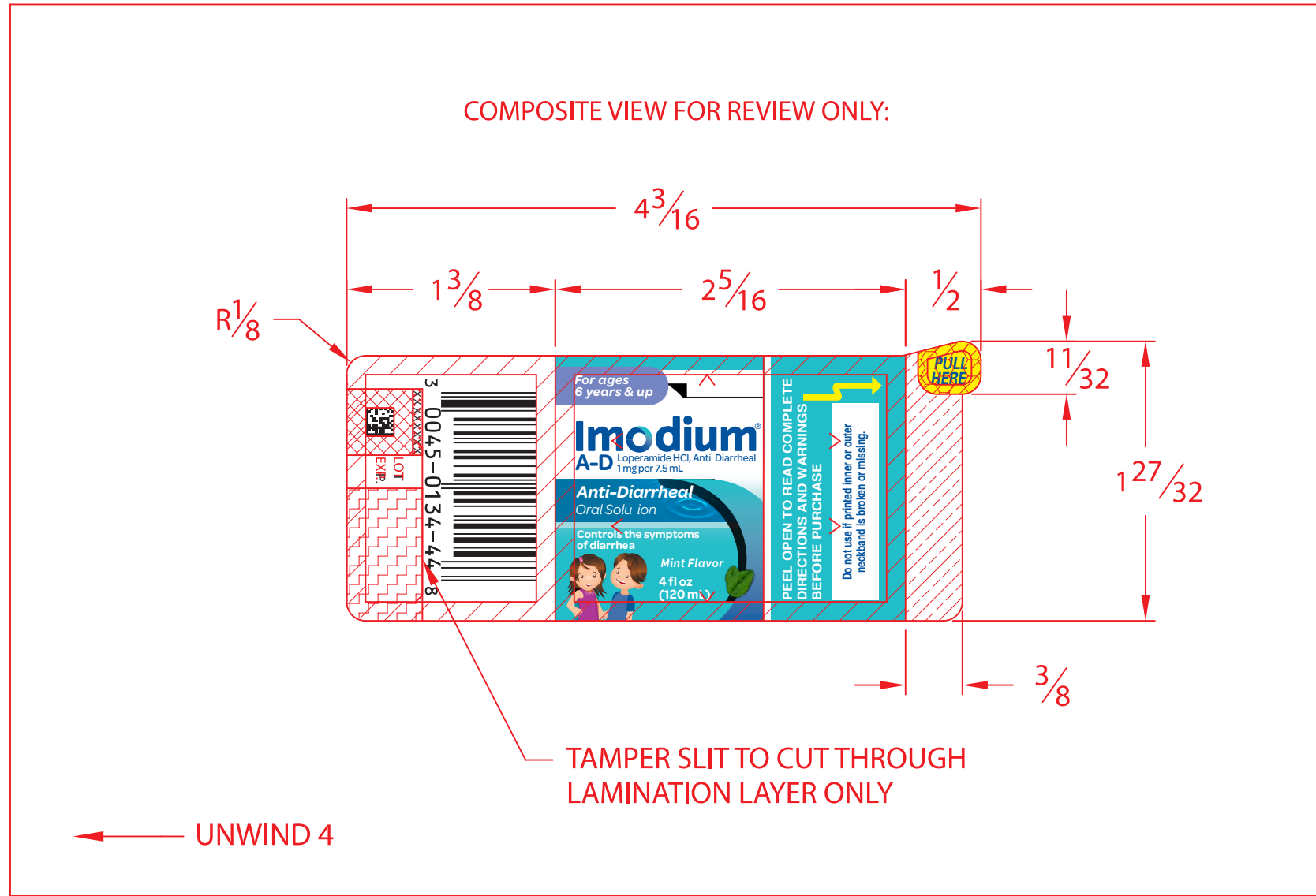
PDP = 2.41 square inches

Loperamide HCl, Anti-Diarrheal
 Loperamide HCl, Anti-Diarrheal
Imodium[®]
 A-D Loperamide HCl, Anti-Diarrheal
 1mg per 7.5 mL

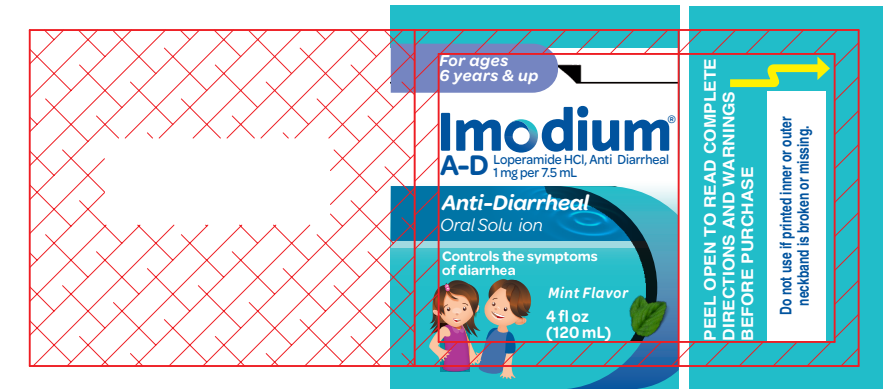
.0625"



Fraction - Decimal Conversion Chart	
Inches	
1/16	.0625
1/8	.125
3/16	.1875



BASE LABEL,
PAGE 9,
GLUE APPLIED
HERE



PAGE 8
GLUED TO BASE
LABEL

COVER,
PAGE 1

Drug Facts

Active ingredient (in each 7.5 mL) Purpose
Loperamide HCl 1 mg.....Anti-diarrheal

Use Controls symptoms of diarrhea, including Traveler's Diarrhea.

Warnings
Allergy alert: Do not use if you have ever had a rash or other allergic reaction to loperamide HCl.
Do not use if you have bloody or black stool.
Ask a doctor before use if you have:
fever, mucus in the stool, or a history of liver disease.
Ask a doctor or pharmacist before use if you are taking antibiotics.

Drug Facts (continued)

Questions or comments?
call 1-877-895-3665 (toll-free) or 215-273-8755 (collect)

Active ingredient made in Italy.
Distributed by:
JOHNSON & JOHNSON CONSUMER INC.
McNeil Consumer Healthcare Division
Fort Washington, PA 19054 USA
©J&JCI 2015

Imodium®
A-D Loperamide HCl, Anti-Diarrheal
1 mg per 7.5 mL
www.imodium.com

PAGE 2

PAGE 7

Drug Facts (continued)

Other information

- each 30 mL contains: sodium 16 mg
- store between 20-25°C (68-77°F)
- do not use if printed inner or outer neckband is broken or missing

Inactive ingredients
anhydrous citric acid, caramel color, D&C yellow no. 10, FD&C blue no. 1, flavor, glycerin, microcrystalline cellulose and carboxymethylcellulose sodium, polyethylene glycol, purified water, simethicone emulsion, sodium benzoate, sucralose, titanium dioxide, xanthan gum

Drug Facts (continued)

When using this product tiredness, drowsiness or dizziness may occur. Be careful when driving or operating machinery.

Stop use and ask a doctor if

- symptoms get worse
- diarrhea lasts for more than 2 days
- you get abdominal swelling or bulging.

These may be signs of a serious condition.

If pregnant or breast-feeding, ask a health professional before use.
Keep out of reach of children. In case of overdose, get medical help or contact a Poison Control Center right away. (1-800-222-1222)

PAGE 6

PAGE 3

Drug Facts (continued)

Directions

- drink plenty of clear fluids to help prevent dehydration caused by diarrhea
- find right dose on chart. If possible, use weight to dose; otherwise use age.
- shake well before using
- use only enclosed dosing cup specifically designed for use with this product. Do not use any other dosing device.
- mL = milliliter

adults and children 12 years and over	30 mL after the first loose stool; 15 mL after each subsequent loose stool; but no more than 60 mL in 24 hours
children 9-11 years (60-95 lbs)	15 mL after first loose stool; 7.5 mL after each subsequent loose stool; but no more than 45 mL in 24 hours
children 6-8 years (48-59 lbs)	15 mL after first loose stool; 7.5 mL after each subsequent loose stool; but no more than 30 mL in 24 hours
children under 6 years (up to 47 lbs)	ask a doctor

Drug Facts (continued)

PAGE 4

PAGE 5

Loperamide HCl, Anti-Diarrheal
Loperamide HCl, Anti-Diarrheal
Loperamide HCl, Anti-Diarrheal
Loperamide HCl, Anti-Diarrheal

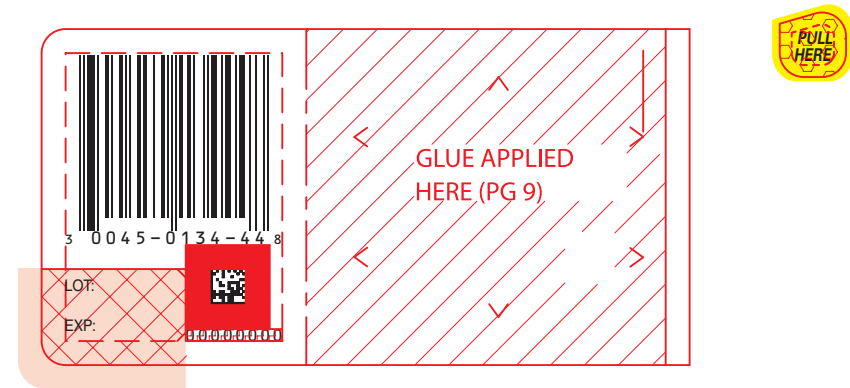
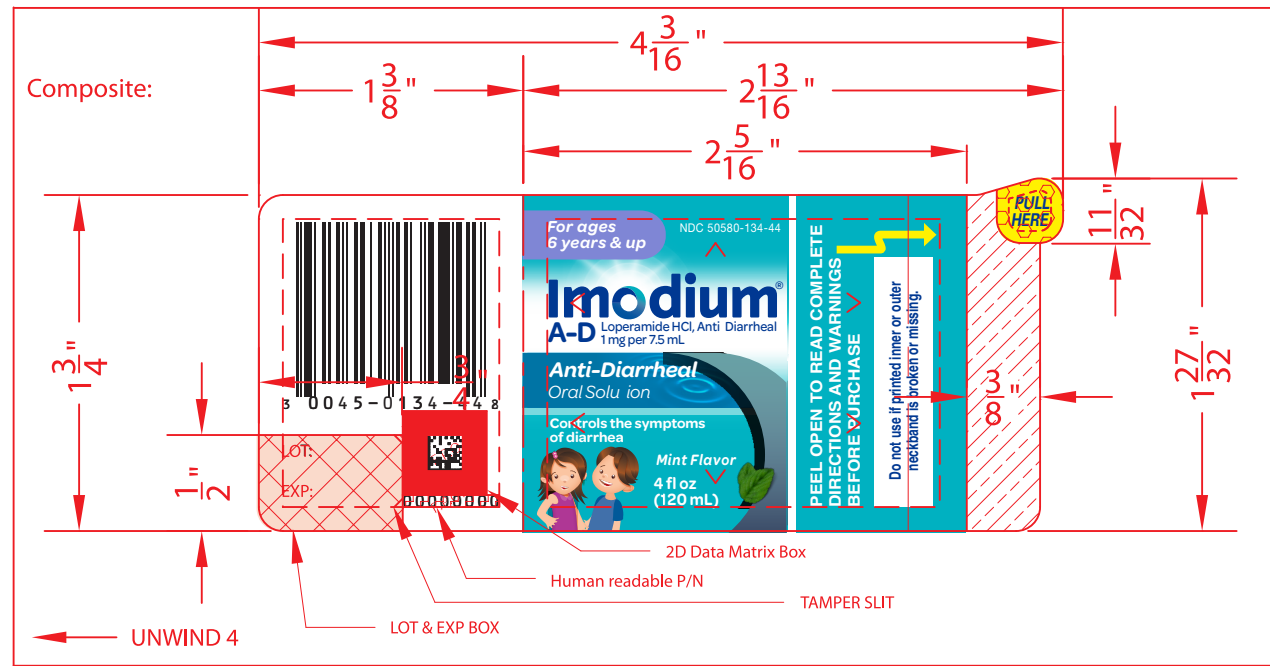
Imodium®
A-D Loperamide HCl, Anti-Diarrheal
1 mg per 7.5 mL

PDP = 2.41 square inches

.0625"

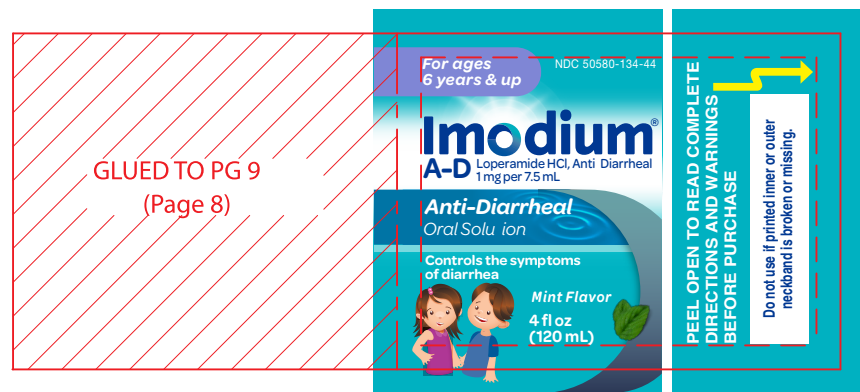
Fraction - Decimal Conversion Chart

Fraction	Inches
$\frac{1}{16}$.0625
$\frac{1}{8}$.125
$\frac{3}{16}$.1875

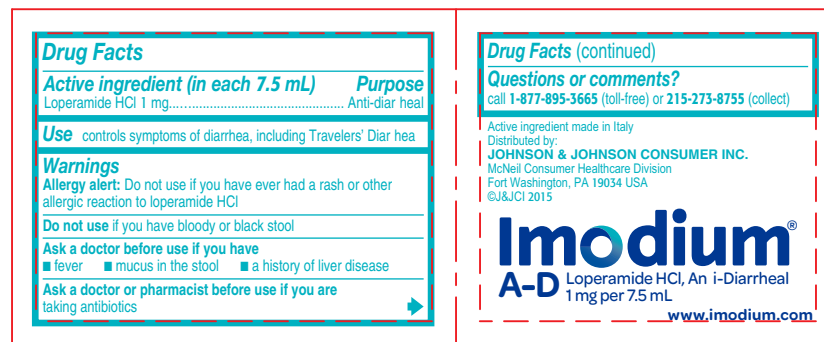


Base Label

BOOKLET PAGES:

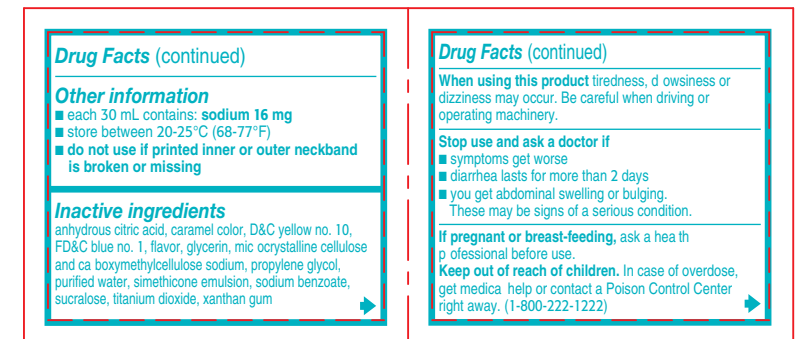


Cover Page 1



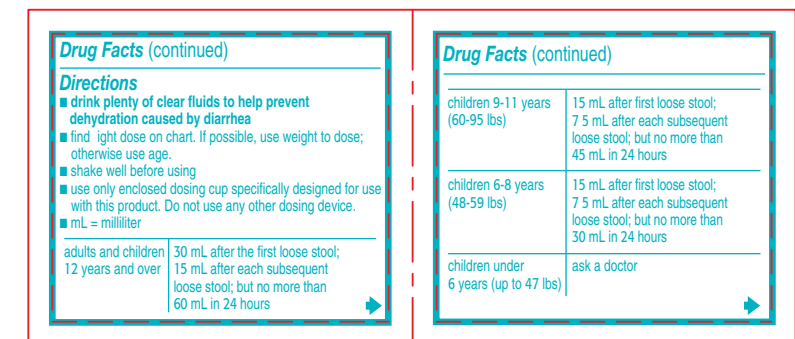
Page 2

Page 7



Page 6

Page 3

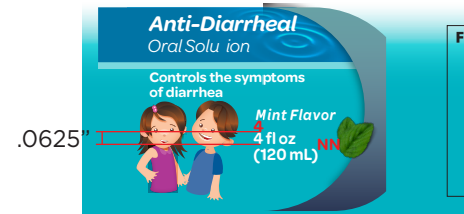


Page 4

Page 5

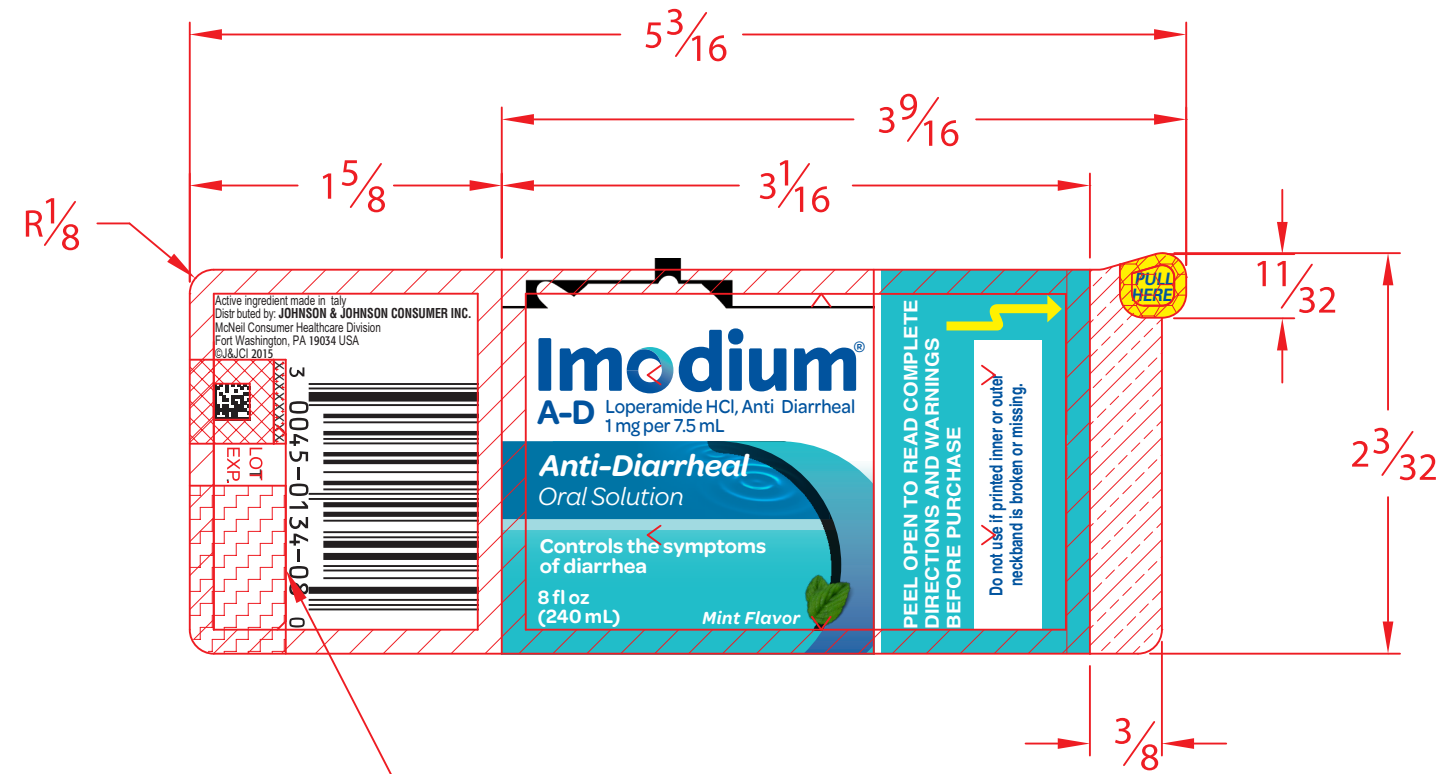
Loperamide HCl, Anti-Diarrheal
Loperamide HCl, Anti-Diarrheal
Loperamide HCl, Anti-Diarrheal
Imodium
A-D Loperamide HCl, Anti-Diarrheal
1 mg per 7.5 mL

PDP = 2.41 square inches



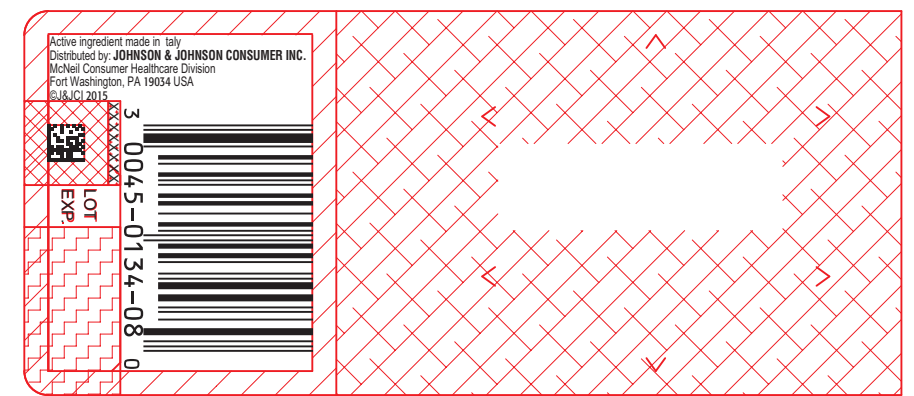
Fraction	Decimal
1/16	.0625
1/8	.125
3/16	.1875

COMPOSITE:

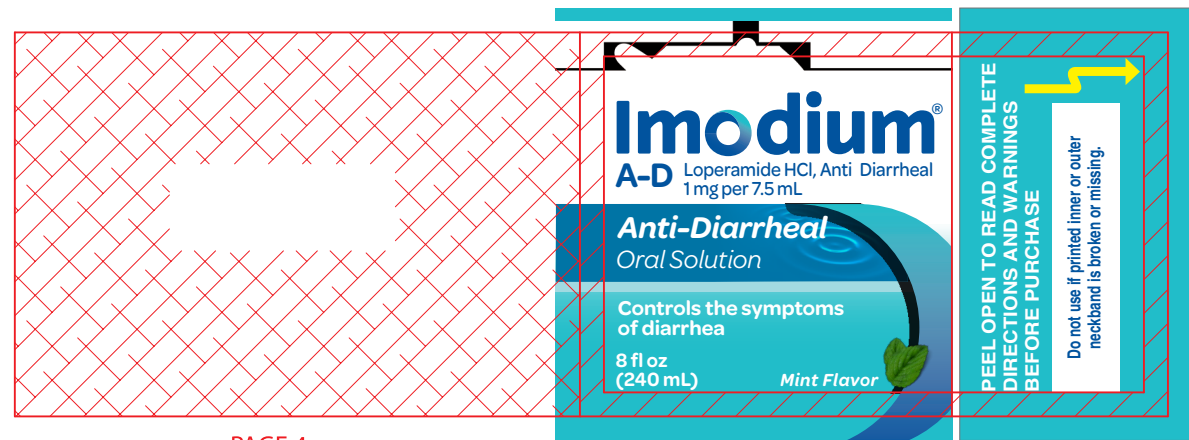


← UNWIND 4

TAMPER SLIT TO CUT THROUGH LAMINATION LAYER ONLY

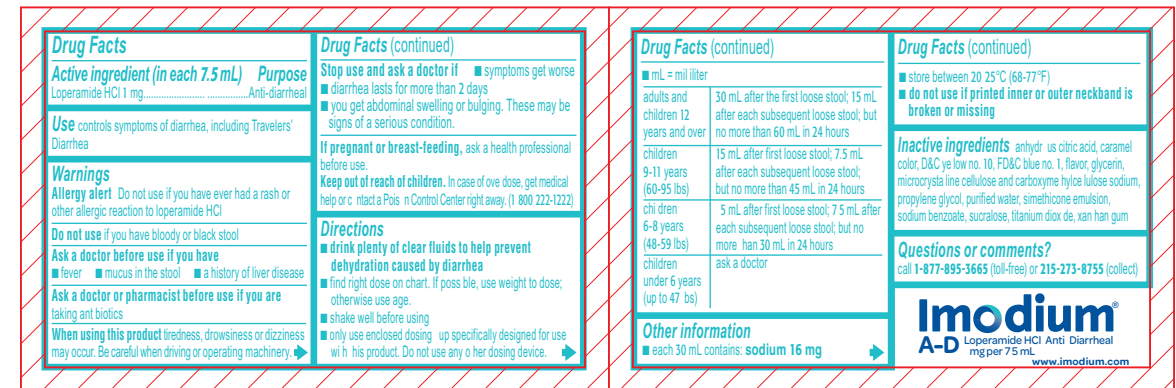


BASE LABEL,
PAGE 5
GLUE APPLIED HERE



PAGE 4
GLUED TO BASE
LABEL

COVER,
PAGE 1

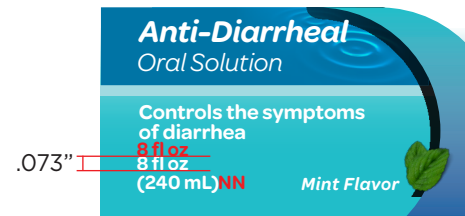


PAGE 2

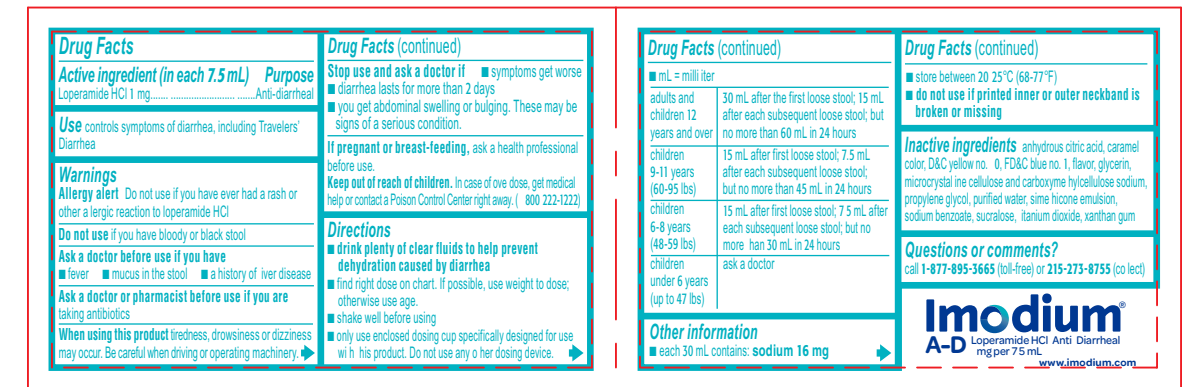
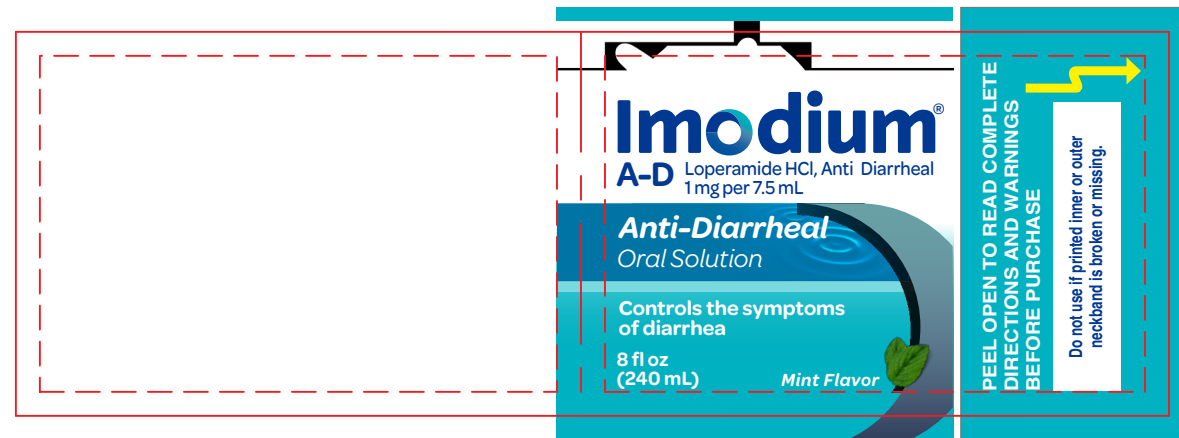
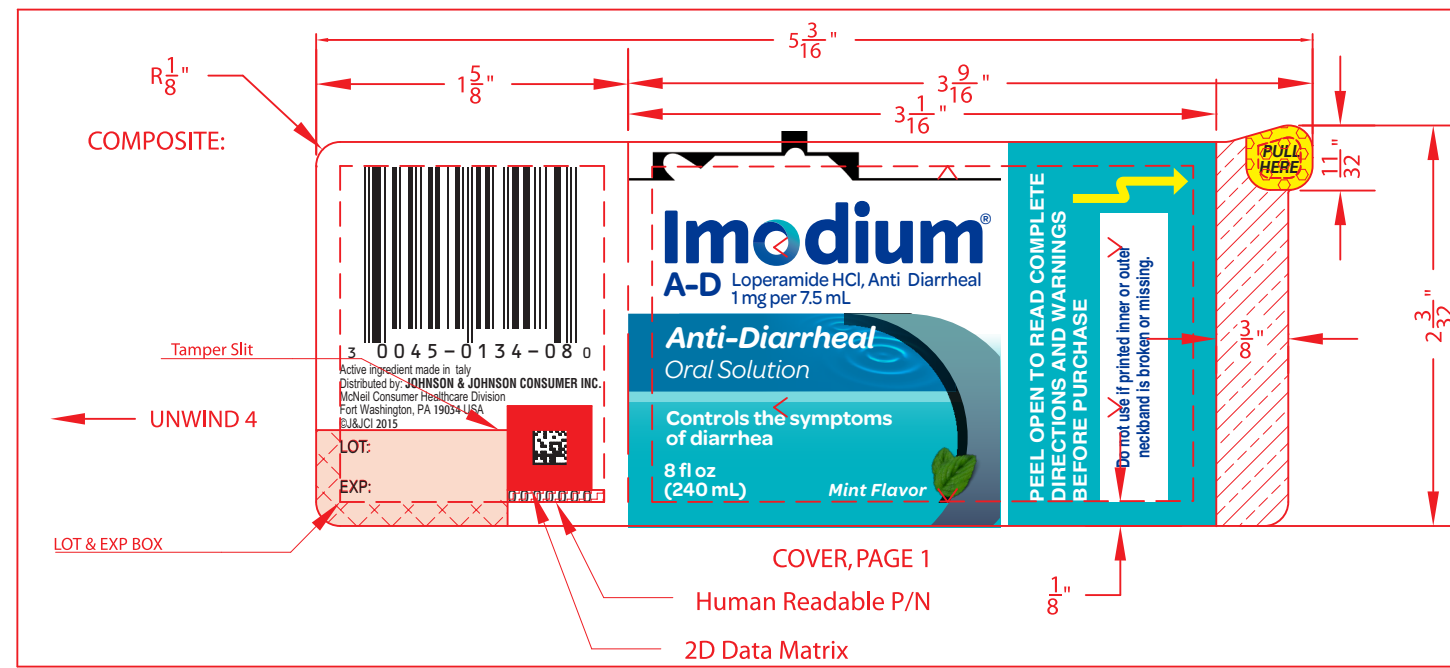
PAGE 3

PDP = 3.88 square inches

Loperamide HCl, Anti Diarrhea
Loperamide HCl, Anti Diarrhea
Loperamide HCl, Anti Diarrhea
Loperamide HCl, Anti Diarrhea
Imodium
A-D



Fraction	Decimal	Inches
$\frac{1}{16}$.0625	
$\frac{1}{8}$.125	
$\frac{3}{16}$.1875	



PDP = 3.88 square inches

Loperamide HCl, Anti Diarrhea
Loperamide HCl, Anti Diarrhea
Loperamide HCl, Anti Diarrhea
Imodium[®] A-D

.073"



Fraction - Decimal Conversion Chart	
	Inches
$\frac{1}{16}$.0625
$\frac{1}{8}$.125
$\frac{3}{16}$.1875