

**CIPRO<sup>®</sup>**  
**(ciprofloxacin hydrochloride)**  
**TABLETS**

**CIPRO<sup>®</sup>**  
**(ciprofloxacin\*)**  
**ORAL SUSPENSION**

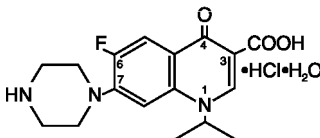
08935877, R.3

5/07

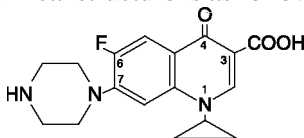
To reduce the development of drug-resistant bacteria and maintain the effectiveness of CIPRO<sup>®</sup> Tablets and CIPRO Oral Suspension and other antibacterial drugs, CIPRO Tablets and CIPRO Oral Suspension should be used only to treat or prevent infections that are proven or strongly suspected to be caused by bacteria.

**DESCRIPTION**

CIPRO (ciprofloxacin hydrochloride) Tablets and CIPRO (ciprofloxacin\*) Oral Suspension are synthetic broad spectrum antimicrobial agents for oral administration. Ciprofloxacin hydrochloride, USP, a fluoroquinolone, is the monohydrochloride monohydrate salt of 1-cyclopropyl-6-fluoro-1,4-dihydro-4-oxo-7-(1-piperazinyl)-3-quinolinecarboxylic acid. It is a faintly yellowish to light yellow crystalline substance with a molecular weight of 385.8. Its empirical formula is  $C_{17}H_{18}FN_3O_3 \cdot HCl \cdot H_2O$  and its chemical structure is as follows:



Ciprofloxacin is 1-cyclopropyl-6-fluoro-1,4-dihydro-4-oxo-7-(1-piperazinyl)-3-quinolinecarboxylic acid. Its empirical formula is  $C_{17}H_{18}FN_3O_3$  and its molecular weight is 331.4. It is a faintly yellowish to light yellow crystalline substance and its chemical structure is as follows:



CIPRO film-coated tablets are available in 250 mg, 500 mg and 750 mg (ciprofloxacin equivalent) strengths. Ciprofloxacin tablets are white to slightly yellowish. The inactive ingredients are cornstarch, microcrystalline cellulose, silicon dioxide, crospovidone, magnesium stearate, hypromellose, titanium dioxide, and polyethylene glycol.

Ciprofloxacin Oral Suspension is available in 5% (5 g ciprofloxacin in 100 mL) and 10% (10 g ciprofloxacin in 100 mL) strengths. Ciprofloxacin Oral Suspension is a white to slightly yellowish suspension with strawberry flavor which may contain yellow-orange droplets. It is composed of ciprofloxacin microcapsules and diluent which are mixed prior to dispensing (See instructions for USE/HANDLING). The components of the suspension have the following compositions:

Microcapsules - ciprofloxacin, povidone, methacrylic acid copolymer, hypromellose, magnesium stearate, and Polysorbate 20.

Diluent - medium-chain triglycerides, sucrose, lecithin, water, and strawberry flavor.

\* Does not comply with USP with regard to “loss on drying” and “residue on ignition”.

## CLINICAL PHARMACOLOGY

**Absorption:** Ciprofloxacin given as an oral tablet is rapidly and well absorbed from the gastrointestinal tract after oral administration. The absolute bioavailability is approximately 70% with no substantial loss by first pass metabolism. Ciprofloxacin maximum serum concentrations and area under the curve are shown in the chart for the 250 mg to 1000 mg dose range.

Dose (mg)	Maximum Serum Concentration ( $\mu\text{g/mL}$ )	Area Under Curve (AUC) ( $\mu\text{g}\cdot\text{hr/mL}$ )
250	1.2	4.8
500	2.4	11.6
750	4.3	20.2
1000	5.4	30.8

Maximum serum concentrations are attained 1 to 2 hours after oral dosing. Mean concentrations 12 hours after dosing with 250, 500, or 750 mg are 0.1, 0.2, and 0.4  $\mu\text{g/mL}$ , respectively. The serum elimination half-life in subjects with normal renal function is approximately 4 hours. Serum concentrations increase proportionately with doses up to 1000 mg.

A 500 mg oral dose given every 12 hours has been shown to produce an area under the serum concentration time curve (AUC) equivalent to that produced by an intravenous infusion of 400 mg ciprofloxacin given over 60 minutes every 12 hours. A 750 mg oral dose given every 12 hours has been shown to produce an AUC at steady-state equivalent to that produced by an intravenous infusion of 400 mg given over 60 minutes every 8 hours. A 750 mg oral dose results in a  $C_{\text{max}}$  similar to that observed with a 400 mg I.V. dose. A 250 mg oral dose given every 12 hours produces an AUC equivalent to that produced by an infusion of 200 mg ciprofloxacin given every 12 hours.

---

### Steady-state Pharmacokinetic Parameters Following Multiple Oral and I.V. Doses

---

Parameters	500 mg q12h, P.O.	400 mg q12h, I.V.	750 mg q12h, P.O.	400 mg q8h, I.V.
AUC ( $\mu\text{g}\cdot\text{hr/mL}$ )	13.7 <sup>a</sup>	12.7 <sup>a</sup>	31.6 <sup>b</sup>	32.9 <sup>c</sup>
$C_{\text{max}}$ ( $\mu\text{g/mL}$ )	2.97	4.56	3.59	4.07

<sup>a</sup>AUC<sub>0-12h</sub>

<sup>b</sup>AUC<sub>24h</sub>=AUC<sub>0-12h</sub> X 2

<sup>c</sup>AUC<sub>24h</sub>=AUC<sub>0-8h</sub> X 3

---

**Distribution:** The binding of ciprofloxacin to serum proteins is 20 to 40% which is not likely to be high enough to cause significant protein binding interactions with other drugs.

After oral administration, ciprofloxacin is widely distributed throughout the body. Tissue concentrations often exceed serum concentrations in both men and women, particularly in genital tissue including the prostate. Ciprofloxacin is present in active form in the saliva, nasal and bronchial secretions, mucosa of the sinuses, sputum, skin blister fluid, lymph, peritoneal fluid, bile, and prostatic secretions. Ciprofloxacin has also been detected in lung, skin, fat, muscle, cartilage, and bone. The drug diffuses into the cerebrospinal fluid (CSF); however, CSF concentrations are generally less than 10% of peak serum concentrations. Low levels of the drug have been detected in the aqueous and vitreous humors of the eye.

**Metabolism:** Four metabolites have been identified in human urine which together account for approximately 15% of an oral dose. The metabolites have antimicrobial activity, but are less active than unchanged ciprofloxacin. Ciprofloxacin is an inhibitor of human cytochrome P450 1A2 (CYP1A2) mediated metabolism. Coadministration of ciprofloxacin with other drugs primarily metabolized by CYP1A2 results in increased plasma concentrations of these drugs and could lead to clinically significant adverse events of the coadministered drug (see **CONTRAINDICATIONS; WARNINGS; PRECAUTIONS: Drug Interactions**).

**Excretion:** The serum elimination half-life in subjects with normal renal function is approximately 4 hours. Approximately 40 to 50% of an orally administered dose is excreted in the urine as unchanged drug. After a 250 mg oral dose, urine concentrations of ciprofloxacin usually exceed 200 µg/mL during the first two hours and are approximately 30 µg/mL at 8 to 12 hours after dosing. The urinary excretion of ciprofloxacin is virtually complete within 24 hours after dosing. The renal clearance of ciprofloxacin, which is approximately 300 mL/minute, exceeds the normal glomerular filtration rate of 120 mL/minute. Thus, active tubular secretion would seem to play a significant role in its elimination. Co-administration of probenecid with ciprofloxacin results in about a 50% reduction in the ciprofloxacin renal clearance and a 50% increase in its concentration in the systemic circulation. Although bile concentrations of ciprofloxacin are several fold higher than serum concentrations after oral dosing, only a small amount of the dose administered is recovered from the bile as unchanged drug. An additional 1 to 2% of the dose is recovered from the bile in the form of metabolites. Approximately 20 to 35% of an oral dose is recovered from the feces within 5 days after dosing. This may arise from either biliary clearance or transintestinal elimination.

With oral administration, a 500 mg dose, given as 10 mL of the 5% CIPRO Suspension (containing 250 mg ciprofloxacin/5mL) is bioequivalent to the 500 mg tablet. A 10 mL volume of the 5% CIPRO Suspension (containing 250 mg ciprofloxacin/5mL) is bioequivalent to a 5 mL volume of the 10% CIPRO Suspension (containing 500 mg ciprofloxacin/5mL).

**Drug-drug Interactions:** When CIPRO Tablet is given concomitantly with food, there is a delay in the absorption of the drug, resulting in peak concentrations that occur closer to 2 hours after dosing rather than 1 hour whereas there is no delay observed when CIPRO Suspension is given with food. The overall absorption of CIPRO Tablet or CIPRO Suspension, however, is not substantially affected. The pharmacokinetics of ciprofloxacin given as the suspension are also not affected by food. Concurrent administration of antacids containing magnesium hydroxide or aluminum hydroxide may reduce the bioavailability of ciprofloxacin by as much as 90%. (See **PRECAUTIONS**.)

The serum concentrations of ciprofloxacin and metronidazole were not altered when these two drugs were given concomitantly.

Concomitant administration with tizanidine is contraindicated (See **CONTRAINDICATIONS**). Concomitant administration of ciprofloxacin with theophylline decreases the clearance of theophylline resulting in elevated serum theophylline levels and increased risk of a patient developing CNS or other adverse reactions. Ciprofloxacin also decreases caffeine clearance and inhibits the formation of paraxanthine after caffeine administration. (See **WARNINGS: PRECAUTIONS**.)

**Special Populations:** Pharmacokinetic studies of the oral (single dose) and intravenous (single and multiple dose) forms of ciprofloxacin indicate that plasma concentrations of ciprofloxacin are higher in elderly subjects (> 65 years) as compared to young adults. Although the  $C_{max}$  is increased 16-40%, the increase in mean AUC is approximately 30%, and can be at least partially attributed to decreased renal clearance in the elderly. Elimination half-life is only slightly (~20%) prolonged in the elderly. These differences are not considered clinically significant. (See **PRECAUTIONS: Geriatric Use**.)

In patients with reduced renal function, the half-life of ciprofloxacin is slightly prolonged. Dosage adjustments may be required. (See **DOSAGE AND ADMINISTRATION**.)

In preliminary studies in patients with stable chronic liver cirrhosis, no significant changes in ciprofloxacin pharmacokinetics have been observed. The kinetics of ciprofloxacin in patients with acute hepatic insufficiency, however, have not been fully elucidated.

Following a single oral dose of 10 mg/kg ciprofloxacin suspension to 16 children ranging in age from 4 months to 7 years, the mean  $C_{max}$  was 2.4  $\mu\text{g/mL}$  (range: 1.5 – 3.4  $\mu\text{g/mL}$ ) and the mean AUC was 9.2  $\mu\text{g}\cdot\text{h/mL}$  (range: 5.8 – 14.9  $\mu\text{g}\cdot\text{h/mL}$ ). There was no apparent age-dependence, and no notable increase in  $C_{max}$  or AUC upon multiple dosing (10 mg/kg TID). In children with severe sepsis who were given intravenous ciprofloxacin (10 mg/kg as a 1-hour infusion), the mean  $C_{max}$  was 6.1  $\mu\text{g/mL}$  (range: 4.6 – 8.3  $\mu\text{g/mL}$ ) in 10 children less than 1 year of age; and 7.2  $\mu\text{g/mL}$  (range: 4.7 – 11.8  $\mu\text{g/mL}$ ) in 10 children between 1 and 5 years of age. The AUC values were 17.4  $\mu\text{g}\cdot\text{h/mL}$  (range: 11.8 – 32.0  $\mu\text{g}\cdot\text{h/mL}$ ) and 16.5  $\mu\text{g}\cdot\text{h/mL}$  (range: 11.0 – 23.8  $\mu\text{g}\cdot\text{h/mL}$ ) in the respective age groups. These values are within the range reported for adults at therapeutic doses. Based on population pharmacokinetic analysis of pediatric patients with various infections, the predicted mean half-life in children is approximately 4 - 5 hours, and the bioavailability of the oral suspension is approximately 60%.

### MICROBIOLOGY

Ciprofloxacin has *in vitro* activity against a wide range of gram-negative and gram-positive microorganisms. The bactericidal action of ciprofloxacin results from inhibition of the enzymes topoisomerase II (DNA gyrase) and topoisomerase IV, which are required for bacterial DNA replication, transcription, repair, and recombination. The mechanism of action of fluoroquinolones, including ciprofloxacin, is different from that of penicillins, cephalosporins, aminoglycosides, macrolides, and tetracyclines; therefore, microorganisms resistant to these classes of drugs may be susceptible to ciprofloxacin and other quinolones. There is no known cross-resistance between ciprofloxacin and other classes of antimicrobials. *In vitro* resistance to ciprofloxacin develops slowly by multiple step mutations.

Ciprofloxacin is slightly less active when tested at acidic pH. The inoculum size has little effect when tested *in vitro*. The minimal bactericidal concentration (MBC) generally does not exceed the minimal inhibitory concentration (MIC) by more than a factor of 2.

Ciprofloxacin has been shown to be active against most strains of the following microorganisms, both *in vitro* and in clinical infections as described in the **INDICATIONS AND USAGE** section of the package insert for CIPRO (ciprofloxacin hydrochloride) Tablets and CIPRO (ciprofloxacin\*) 5% and 10% Oral Suspension.

#### **Aerobic gram-positive microorganisms**

*Enterococcus faecalis* (Many strains are only moderately susceptible.)

*Staphylococcus aureus* (methicillin-susceptible strains only)

*Staphylococcus epidermidis* (methicillin-susceptible strains only)

*Staphylococcus saprophyticus*

*Streptococcus pneumoniae* (penicillin-susceptible strains only)

*Streptococcus pyogenes*

### **Aerobic gram-negative microorganisms**

<i>Campylobacter jejuni</i>	<i>Proteus mirabilis</i>
<i>Citrobacter diversus</i>	<i>Proteus vulgaris</i>
<i>Citrobacter freundii</i>	<i>Providencia rettgeri</i>
<i>Enterobacter cloacae</i>	<i>Providencia stuartii</i>
<i>Escherichia coli</i>	<i>Pseudomonas aeruginosa</i>
<i>Haemophilus influenzae</i>	<i>Salmonella typhi</i>
<i>Haemophilus parainfluenzae</i>	<i>Serratia marcescens</i>
<i>Klebsiella pneumoniae</i>	<i>Shigella boydii</i>
<i>Moraxella catarrhalis</i>	<i>Shigella dysenteriae</i>
<i>Morganella morganii</i>	<i>Shigella flexneri</i>
<i>Neisseria gonorrhoeae</i>	<i>Shigella sonnei</i>

Ciprofloxacin has been shown to be active against *Bacillus anthracis* both *in vitro* and by use of serum levels as a surrogate marker (see **INDICATIONS AND USAGE** and **INHALATIONAL ANTHRAX – ADDITIONAL INFORMATION**).

The following *in vitro* data are available, **but their clinical significance is unknown.**

Ciprofloxacin exhibits *in vitro* minimum inhibitory concentrations (MICs) of 1 µg/mL or less against most (≥ 90%) strains of the following microorganisms; however, the safety and effectiveness of ciprofloxacin in treating clinical infections due to these microorganisms have not been established in adequate and well-controlled clinical trials.

### **Aerobic gram-positive microorganisms**

<i>Staphylococcus haemolyticus</i>
<i>Staphylococcus hominis</i>
<i>Streptococcus pneumoniae</i> (penicillin-resistant strains only)

### **Aerobic gram-negative microorganisms**

<i>Acinetobacter Iwoffii</i>	<i>Pasteurella multocida</i>
<i>Aeromonas hydrophila</i>	<i>Salmonella enteritidis</i>
<i>Edwardsiella tarda</i>	<i>Vibrio cholerae</i>
<i>Enterobacter aerogenes</i>	<i>Vibrio parahaemolyticus</i>
<i>Klebsiella oxytoca</i>	<i>Vibrio vulnificus</i>
<i>Legionella pneumophila</i>	<i>Yersinia enterocolitica</i>

Most strains of *Burkholderia cepacia* and some strains of *Stenotrophomonas maltophilia* are resistant to ciprofloxacin as are most anaerobic bacteria, including *Bacteroides fragilis* and *Clostridium difficile*.

### **Susceptibility Tests**

**Dilution Techniques:** Quantitative methods are used to determine antimicrobial minimum inhibitory concentrations (MICs). These MICs provide estimates of the susceptibility of bacteria to antimicrobial compounds. The MICs should be determined using a standardized procedure. Standardized procedures are based on a dilution method<sup>1</sup> (broth or agar) or equivalent with standardized inoculum concentrations and standardized concentrations of ciprofloxacin powder. The MIC values should be interpreted according to the following criteria:

For testing *Enterobacteriaceae*, *Enterococcus faecalis*, methicillin-susceptible *Staphylococcus* species, penicillin-susceptible *Streptococcus pneumoniae*, *Streptococcus pyogenes*, and *Pseudomonas aeruginosa*<sup>a</sup>:

<u>MIC (µg/mL)</u>	<u>Interpretation</u>
≤1	Susceptible (S)
2	Intermediate (I)
≥4	Resistant (R)

<sup>a</sup>These interpretive standards are applicable only to broth microdilution susceptibility tests with streptococci using cation-adjusted Mueller-Hinton broth with 2-5% lysed horse blood.

For testing *Haemophilus influenzae* and *Haemophilus parainfluenzae*<sup>b</sup>:

<u>MIC (µg/mL)</u>	<u>Interpretation</u>
≤1	Susceptible (S)

<sup>b</sup> This interpretive standard is applicable only to broth microdilution susceptibility tests with *Haemophilus influenzae* and *Haemophilus parainfluenzae* using *Haemophilus* Test Medium<sup>1</sup>.

The current absence of data on resistant strains precludes defining any results other than “Susceptible”. Strains yielding MIC results suggestive of a “nonsusceptible” category should be submitted to a reference laboratory for further testing.

For testing *Neisseria gonorrhoeae*<sup>c</sup>:

<u>MIC (µg/mL)</u>	<u>Interpretation</u>
≤0.06	Susceptible (S)
0.12 – 0.5	Intermediate (I)
≥1	Resistant (R)

<sup>c</sup> This interpretive standard is applicable only to agar dilution test with GC agar base and 1% defined growth supplement.

A report of “Susceptible” indicates that the pathogen is likely to be inhibited if the antimicrobial compound in the blood reaches the concentrations usually achievable. A report of “Intermediate” indicates that the result should be considered equivocal, and, if the microorganism is not fully susceptible to alternative, clinically feasible drugs, the test should be repeated. This category implies possible clinical applicability in body sites where the drug is physiologically concentrated or in situations where high dosage of drug can be used. This category also provides a buffer zone, which prevents small uncontrolled technical factors from causing major discrepancies in interpretation. A report of “Resistant” indicates that the pathogen is not likely to be inhibited if the antimicrobial compound in the blood reaches the concentrations usually achievable; other therapy should be selected.

Standardized susceptibility test procedures require the use of laboratory control microorganisms to control the technical aspects of the laboratory procedures. Standard ciprofloxacin powder should provide the following MIC values:

<u>Organism</u>		<u>MIC (µg/mL)</u>
<i>E. faecalis</i>	ATCC 29212	0.25 – 2.0
<i>E. coli</i>	ATCC 25922	0.004 – 0.015
<i>H. influenzae</i> <sup>a</sup>	ATCC 49247	0.004 – 0.03
<i>N. gonorrhoeae</i> <sup>b</sup>	ATCC 49226	0.001 – 0.008
<i>P. aeruginosa</i>	ATCC 27853	0.25 – 1.0
<i>S. aureus</i>	ATCC 29213	0.12 – 0.5

<sup>a</sup>This quality control range is applicable to only *H. influenzae* ATCC 49247 tested by a broth microdilution procedure using *Haemophilus* Test Medium (HTM)<sup>1</sup>.

<sup>b</sup>This quality control range is applicable to only *N. gonorrhoeae* ATCC 49226 tested by an agar dilution procedure using GC agar base and 1% defined growth supplement.

**Diffusion Techniques:** Quantitative methods that require measurement of zone diameters also provide reproducible estimates of the susceptibility of bacteria to antimicrobial compounds. One such standardized procedure<sup>2</sup> requires the use of standardized inoculum concentrations. This procedure uses paper disks impregnated with 5- $\mu$ g ciprofloxacin to test the susceptibility of microorganisms to ciprofloxacin.

Reports from the laboratory providing results of the standard single-disk susceptibility test with a 5- $\mu$ g ciprofloxacin disk should be interpreted according to the following criteria:

For testing *Enterobacteriaceae*, *Enterococcus faecalis*, methicillin-susceptible *Staphylococcus* species, penicillin-susceptible *Streptococcus pneumoniae*, *Streptococcus pyogenes*, and *Pseudomonas aeruginosa*<sup>a</sup>:

<u>Zone Diameter (mm)</u>	<u>Interpretation</u>
$\geq 21$	Susceptible (S)
16 – 20	Intermediate (I)
$\leq 15$	Resistant (R)

<sup>a</sup>These zone diameter standards are applicable only to tests performed for streptococci using Mueller-Hinton agar supplemented with 5% sheep blood incubated in 5% CO<sub>2</sub>.

For testing *Haemophilus influenzae* and *Haemophilus parainfluenzae*<sup>b</sup>:

<u>Zone Diameter (mm)</u>	<u>Interpretation</u>
$\geq 21$	Susceptible (S)

<sup>b</sup>This zone diameter standard is applicable only to tests with *Haemophilus influenzae* and *Haemophilus parainfluenzae* using *Haemophilus* Test Medium (HTM)<sup>2</sup>.

The current absence of data on resistant strains precludes defining any results other than “Susceptible”. Strains yielding zone diameter results suggestive of a “nonsusceptible” category should be submitted to a reference laboratory for further testing.

For testing *Neisseria gonorrhoeae*<sup>c</sup>:

<u>Zone Diameter (mm)</u>	<u>Interpretation</u>
$\geq 41$	Susceptible (S)
28 – 40	Intermediate (I)
$\leq 27$	Resistant (R)

<sup>c</sup>This zone diameter standard is applicable only to disk diffusion tests with GC agar base and 1% defined growth supplement.

Interpretation should be as stated above for results using dilution techniques. Interpretation involves correlation of the diameter obtained in the disk test with the MIC for ciprofloxacin.

As with standardized dilution techniques, diffusion methods require the use of laboratory control microorganisms that are used to control the technical aspects of the laboratory procedures. For the diffusion technique, the 5- $\mu$ g ciprofloxacin disk should provide the following zone diameters in these laboratory test quality control strains:

<u>Organism</u>		<u>Zone Diameter (mm)</u>
<i>E. coli</i>	ATCC 25922	30 – 40
<i>H. influenzae</i> <sup>a</sup>	ATCC 49247	34 – 42
<i>N. gonorrhoeae</i> <sup>b</sup>	ATCC 49226	48 – 58
<i>P. aeruginosa</i>	ATCC 27853	25 – 33
<i>S. aureus</i>	ATCC 25923	22 – 30

<sup>a</sup> These quality control limits are applicable to only *H. influenzae* ATCC 49247 testing using *Haemophilus* Test Medium (HTM)<sup>2</sup>.

<sup>b</sup> These quality control limits are applicable only to tests conducted with *N. gonorrhoeae* ATCC 49226 performed by disk diffusion using GC agar base and 1% defined growth supplement.

### INDICATIONS AND USAGE

CIPRO is indicated for the treatment of infections caused by susceptible strains of the designated microorganisms in the conditions and patient populations listed below. Please see **DOSAGE AND ADMINISTRATION** for specific recommendations.

#### Adult Patients:

**Urinary Tract Infections** caused by *Escherichia coli*, *Klebsiella pneumoniae*, *Enterobacter cloacae*, *Serratia marcescens*, *Proteus mirabilis*, *Providencia rettgeri*, *Morganella morganii*, *Citrobacter diversus*, *Citrobacter freundii*, *Pseudomonas aeruginosa*, methicillin-susceptible *Staphylococcus epidermidis*, *Staphylococcus saprophyticus*, or *Enterococcus faecalis*.

**Acute Uncomplicated Cystitis in females** caused by *Escherichia coli* or *Staphylococcus saprophyticus*.

**Chronic Bacterial Prostatitis** caused by *Escherichia coli* or *Proteus mirabilis*.

**Lower Respiratory Tract Infections** caused by *Escherichia coli*, *Klebsiella pneumoniae*, *Enterobacter cloacae*, *Proteus mirabilis*, *Pseudomonas aeruginosa*, *Haemophilus influenzae*, *Haemophilus parainfluenzae*, or penicillin-susceptible *Streptococcus pneumoniae*. Also, *Moraxella catarrhalis* for the treatment of acute exacerbations of chronic bronchitis.

NOTE: Although effective in clinical trials, ciprofloxacin is not a drug of first choice in the treatment of presumed or confirmed pneumonia secondary to *Streptococcus pneumoniae*.

**Acute Sinusitis** caused by *Haemophilus influenzae*, penicillin-susceptible *Streptococcus pneumoniae*, or *Moraxella catarrhalis*.

**Skin and Skin Structure Infections** caused by *Escherichia coli*, *Klebsiella pneumoniae*, *Enterobacter cloacae*, *Proteus mirabilis*, *Proteus vulgaris*, *Providencia stuartii*, *Morganella morganii*, *Citrobacter freundii*, *Pseudomonas aeruginosa*, methicillin-susceptible *Staphylococcus aureus*, methicillin-susceptible *Staphylococcus epidermidis*, or *Streptococcus pyogenes*.

**Bone and Joint Infections** caused by *Enterobacter cloacae*, *Serratia marcescens*, or *Pseudomonas aeruginosa*.

**Complicated Intra-Abdominal Infections** (used in combination with metronidazole) caused by *Escherichia coli*, *Pseudomonas aeruginosa*, *Proteus mirabilis*, *Klebsiella pneumoniae*, or *Bacteroides fragilis*.

**Infectious Diarrhea** caused by *Escherichia coli* (enterotoxigenic strains), *Campylobacter jejuni*, *Shigella boydii*<sup>†</sup>, *Shigella dysenteriae*, *Shigella flexneri* or *Shigella sonnei*<sup>†</sup> when antibacterial therapy is indicated.

**Typhoid Fever (Enteric Fever)** caused by *Salmonella typhi*.

NOTE: The efficacy of ciprofloxacin in the eradication of the chronic typhoid carrier state has not been demonstrated.

**Uncomplicated cervical and urethral gonorrhea** due to *Neisseria gonorrhoeae*.

#### **Pediatric patients (1 to 17 years of age):**

**Complicated Urinary Tract Infections and Pyelonephritis** due to *Escherichia coli*.

NOTE: Although effective in clinical trials, ciprofloxacin is not a drug of first choice in the pediatric population due to an increased incidence of adverse events compared to controls, including events related to joints and/or surrounding tissues. (See **WARNINGS, PRECAUTIONS, Pediatric Use, ADVERSE REACTIONS** and **CLINICAL STUDIES**.) Ciprofloxacin, like other fluoroquinolones, is associated with arthropathy and histopathological changes in weight-bearing joints of juvenile animals. (See **ANIMAL PHARMACOLOGY**.)

#### **Adult and Pediatric Patients:**

**Inhalational anthrax** (post-exposure): To reduce the incidence or progression of disease following exposure to aerosolized *Bacillus anthracis*.

Ciprofloxacin serum concentrations achieved in humans served as a surrogate endpoint reasonably likely to predict clinical benefit and provided the initial basis for approval of this indication.<sup>4</sup> Supportive clinical information for ciprofloxacin for anthrax post-exposure prophylaxis was obtained during the anthrax bioterror attacks of October 2001. (See also, **INHALATIONAL ANTHRAX – ADDITIONAL INFORMATION**).

<sup>†</sup>Although treatment of infections due to this organism in this organ system demonstrated a clinically significant outcome, efficacy was studied in fewer than 10 patients.

If anaerobic organisms are suspected of contributing to the infection, appropriate therapy should be administered. Appropriate culture and susceptibility tests should be performed before treatment in order to isolate and identify organisms causing infection and to determine their susceptibility to ciprofloxacin. Therapy with CIPRO may be initiated before results of these tests are known; once results become available appropriate therapy should be continued. As with other drugs, some strains of *Pseudomonas aeruginosa* may develop resistance fairly rapidly during treatment with ciprofloxacin. Culture and susceptibility testing performed periodically during therapy will provide information not only on the therapeutic effect of the antimicrobial agent but also on the possible emergence of bacterial resistance.

To reduce the development of drug-resistant bacteria and maintain the effectiveness of CIPRO Tablets and CIPRO Oral Suspension and other antibacterial drugs, CIPRO Tablets and CIPRO Oral Suspension should be used only to treat or prevent infections that are proven or strongly suspected to be caused by susceptible bacteria. When culture and susceptibility information are available, they should be considered in selecting or modifying antibacterial therapy. In the absence of such data, local epidemiology and susceptibility patterns may contribute to the empiric selection of therapy.

## CONTRAINDICATIONS

Ciprofloxacin is contraindicated in persons with a history of hypersensitivity to ciprofloxacin, any member of the quinolone class of antimicrobial agents, or any of the product components.

Concomitant administration with tizanidine is contraindicated. (See **PRECAUTIONS: Drug Interactions**.)

## WARNINGS

**Pregnant Women: THE SAFETY AND EFFECTIVENESS OF CIPROFLOXACIN IN PREGNANT AND LACTATING WOMEN HAVE NOT BEEN ESTABLISHED.** (See **PRECAUTIONS: Pregnancy**, and **Nursing Mothers** subsections.)

**Pediatrics:** Ciprofloxacin should be used in pediatric patients (less than 18 years of age) only for infections listed in the **INDICATIONS AND USAGE** section. An increased incidence of adverse events compared to controls, including events related to joints and/or surrounding tissues, has been observed. (See **ADVERSE REACTIONS**.)

In pre-clinical studies, oral administration of ciprofloxacin caused lameness in immature dogs. Histopathological examination of the weight-bearing joints of these dogs revealed permanent lesions of the cartilage. Related quinolone-class drugs also produce erosions of cartilage of weight-bearing joints and other signs of arthropathy in immature animals of various species. (See **ANIMAL PHARMACOLOGY**.)

**Cytochrome P450 (CYP450):** Ciprofloxacin is an inhibitor of the hepatic CYP1A2 enzyme pathway. Coadministration of ciprofloxacin and other drugs primarily metabolized by CYP1A2 (e.g. theophylline, methylxanthines, tizanidine) results in increased plasma concentrations of the coadministered drug and could lead to clinically significant pharmacodynamic side effects of the coadministered drug.

**Central Nervous System Disorders:** Convulsions, increased intracranial pressure, and toxic psychosis have been reported in patients receiving quinolones, including ciprofloxacin. Ciprofloxacin may also cause central nervous system (CNS) events including: dizziness, confusion, tremors, hallucinations, depression, and, rarely, suicidal thoughts or acts. These reactions may occur following the first dose. If these reactions occur in patients receiving ciprofloxacin, the drug should be discontinued and appropriate measures instituted. As with all quinolones, ciprofloxacin should be used with caution in patients with known or suspected CNS disorders that may predispose to seizures or lower the seizure threshold (e.g. severe cerebral arteriosclerosis, epilepsy), or in the presence of other risk factors that may predispose to seizures or lower the seizure threshold (e.g. certain drug therapy, renal dysfunction). (See **PRECAUTIONS: General, Information for Patients, Drug Interactions** and **ADVERSE REACTIONS**.)

**Theophylline: SERIOUS AND FATAL REACTIONS HAVE BEEN REPORTED IN PATIENTS RECEIVING CONCURRENT ADMINISTRATION OF CIPROFLOXACIN AND THEOPHYLLINE.** These reactions have included cardiac arrest, seizure, status epilepticus, and respiratory failure. Although similar serious adverse effects have been reported in patients receiving theophylline alone, the possibility that these reactions may be potentiated by ciprofloxacin cannot be eliminated. If concomitant use cannot be avoided, serum levels of theophylline should be monitored and dosage adjustments made as appropriate.

**Hypersensitivity Reactions:** Serious and occasionally fatal hypersensitivity (anaphylactic) reactions, some following the first dose, have been reported in patients receiving quinolone therapy. Some reactions were accompanied by cardiovascular collapse, loss of consciousness, tingling, pharyngeal or facial edema, dyspnea, urticaria, and itching. Only a few patients had a history of hypersensitivity reactions. Serious anaphylactic reactions require immediate emergency treatment with epinephrine. Oxygen, intravenous steroids, and airway management, including intubation, should be administered as indicated.

Other serious and sometimes fatal events, some due to hypersensitivity, and some due to uncertain etiology, have been reported rarely in patients receiving therapy with quinolones, including ciprofloxacin. These events may be severe and generally occur following the administration of multiple doses. Clinical manifestations may include one or more of the following:

- fever, rash, or severe dermatologic reactions (e.g., toxic epidermal necrolysis, Stevens-Johnson syndrome);
- vasculitis; arthralgia; myalgia; serum sickness;
- allergic pneumonitis;
- interstitial nephritis; acute renal insufficiency or failure;
- hepatitis; jaundice; acute hepatic necrosis or failure;
- anemia, including hemolytic and aplastic; thrombocytopenia, including thrombotic thrombocytopenic purpura; leukopenia; agranulocytosis; pancytopenia; and/or other hematologic abnormalities.

The drug should be discontinued immediately at the first appearance of a skin rash, jaundice, or any other sign of hypersensitivity and supportive measures instituted (See **PRECAUTIONS: Information for Patients** and **ADVERSE REACTIONS**).

**Pseudomembranous Colitis:** *Clostridium difficile* associated diarrhea (CDAD) has been reported with use of nearly all antibacterial agents, including CIPRO, and may range in severity from mild diarrhea to fatal colitis. Treatment with antibacterial agents alters the normal flora of the colon leading to overgrowth of *C. difficile*.

*C. difficile* produces toxins A and B which contribute to the development of CDAD. Hypertoxin producing strains of *C. difficile* cause increased morbidity and mortality, as these infections can be refractory to antimicrobial therapy and may require colectomy. CDAD must be considered in all patients who present with diarrhea following antibiotic use. Careful medical history is necessary since CDAD has been reported to occur over two months after the administration of antibacterial agents.

If CDAD is suspected or confirmed, ongoing antibiotic use not directed against *C. difficile* may need to be discontinued. Appropriate fluid and electrolyte management, protein supplementation, antibiotic treatment of *C. difficile*, and surgical evaluation should be instituted as clinically indicated.

**Peripheral neuropathy:** Rare cases of sensory or sensorimotor axonal polyneuropathy affecting small and/or large axons resulting in paresthesias, hypoesthesias, dysesthesias and weakness have been reported in patients receiving quinolones, including ciprofloxacin. Ciprofloxacin should be discontinued if the patient experiences symptoms of neuropathy including pain, burning, tingling, numbness, and/or weakness, or is found to have deficits in light touch, pain, temperature, position sense, vibratory sensation, and/or motor strength in order to prevent the development of an irreversible condition.

**Tendon Effects:** Ruptures of the shoulder, hand, Achilles tendon or other tendons that required surgical repair or resulted in prolonged disability have been reported in patients receiving quinolones, including ciprofloxacin. Post-marketing surveillance reports indicate that this risk may be increased in patients receiving concomitant corticosteroids, especially the elderly. Ciprofloxacin should be discontinued if the patient experiences pain, inflammation, or rupture of a tendon. Patients should rest and refrain from exercise until the diagnosis of tendinitis or tendon rupture has been excluded. Tendon rupture can occur during or after therapy with quinolones, including ciprofloxacin.

**Syphilis:** Ciprofloxacin has not been shown to be effective in the treatment of syphilis. Antimicrobial agents used in high dose for short periods of time to treat gonorrhea may mask or delay the symptoms of incubating syphilis. All patients with gonorrhea should have a serologic test for syphilis at the time of diagnosis. Patients treated with ciprofloxacin should have a follow-up serologic test for syphilis after three months.

## PRECAUTIONS

**General:** Crystals of ciprofloxacin have been observed rarely in the urine of human subjects but more frequently in the urine of laboratory animals, which is usually alkaline. (See **ANIMAL PHARMACOLOGY**.) Crystalluria related to ciprofloxacin has been reported only rarely in humans because human urine is usually acidic. Alkalinity of the urine should be avoided in patients receiving ciprofloxacin. Patients should be well hydrated to prevent the formation of highly concentrated urine.

**Central Nervous System:** Quinolones, including ciprofloxacin, may also cause central nervous system (CNS) events, including: nervousness, agitation, insomnia, anxiety, nightmares or paranoia. (See **WARNINGS, Information for Patients, and Drug Interactions**.)

**Renal Impairment:** Alteration of the dosage regimen is necessary for patients with impairment of renal function. (See **DOSAGE AND ADMINISTRATION**.)

**Phototoxicity:** Moderate to severe phototoxicity manifested as an exaggerated sunburn reaction has been observed in patients who are exposed to direct sunlight while receiving some members of the quinolone class of drugs. Excessive sunlight should be avoided. Therapy should be discontinued if phototoxicity occurs.

As with any potent drug, periodic assessment of organ system functions, including renal, hepatic, and hematopoietic function, is advisable during prolonged therapy.

Prescribing CIPRO Tablets and CIPRO Oral Suspension in the absence of a proven or strongly suspected bacterial infection or a prophylactic indication is unlikely to provide benefit to the patient and increases the risk of the development of drug-resistant bacteria.

### Information for Patients:

Patients should be advised:

- that antibacterial drugs including CIPRO Tablets and CIPRO Oral Suspension should only be used to treat bacterial infections. They do not treat viral infections (e.g., the common cold). When CIPRO Tablets and CIPRO Oral Suspension is prescribed to treat a bacterial infection, patients should be told that although it is common to feel better early in the course of therapy, the medication should be taken exactly as directed. Skipping doses or not completing the full course of therapy may (1) decrease the effectiveness of the immediate treatment and (2) increase the likelihood that bacteria will develop resistance and will not be treatable by CIPRO Tablets and CIPRO Oral Suspension or other antibacterial drugs in the future.
- that ciprofloxacin may be taken with or without meals and to drink fluids liberally. As with other quinolones, concurrent administration of ciprofloxacin with magnesium/aluminum antacids, or sucralfate, Videx<sup>®</sup> (didanosine) chewable/buffered tablets or pediatric powder, other highly buffered drugs, or with other products containing calcium, iron or zinc should be avoided. Ciprofloxacin may be taken two hours before or six hours after taking these products. Ciprofloxacin should not be taken with dairy products (like milk or yogurt) or calcium-fortified juices alone since absorption of ciprofloxacin may be significantly reduced; however, ciprofloxacin may be taken with a meal that contains these products.

- that ciprofloxacin may be associated with hypersensitivity reactions, even following a single dose, and to discontinue the drug at the first sign of a skin rash or other allergic reaction.
- to avoid excessive sunlight or artificial ultraviolet light while receiving ciprofloxacin and to discontinue therapy if phototoxicity occurs.
- that peripheral neuropathies have been associated with ciprofloxacin use. If symptoms of peripheral neuropathy including pain, burning, tingling, numbness and/or weakness develop, they should discontinue treatment and contact their physicians.
- to discontinue CIPRO treatment; rest and refrain from exercise; and inform their physician if they experience pain, inflammation, or rupture of a tendon. The risk of serious tendon disorders with quinolones is higher in those over 65 years of age, especially those on corticosteroids.
- that ciprofloxacin may cause dizziness and lightheadedness; therefore, patients should know how they react to this drug before they operate an automobile or machinery or engage in activities requiring mental alertness or coordination.
- that ciprofloxacin increases the effects of tizanidine (Zanaflex<sup>®</sup>). Patients should not use ciprofloxacin if they are already taking tizanidine.
- that ciprofloxacin may increase the effects of theophylline and caffeine. There is a possibility of caffeine accumulation when products containing caffeine are consumed while taking quinolones.
- that convulsions have been reported in patients receiving quinolones, including ciprofloxacin, and to notify their physician before taking this drug if there is a history of this condition.
- that ciprofloxacin has been associated with an increased rate of adverse events involving joints and surrounding tissue structures (like tendons) in pediatric patients (less than 18 years of age). Parents should inform their child's physician if the child has a history of joint-related problems before taking this drug. Parents of pediatric patients should also notify their child's physician of any joint-related problems that occur during or following ciprofloxacin therapy. (See **WARNINGS, PRECAUTIONS, Pediatric Use** and **ADVERSE REACTIONS**.)
- that diarrhea is a common problem caused by antibiotics which usually ends when the antibiotic is discontinued. Sometimes after starting treatment with antibiotics, patients can develop watery and bloody stools (with or without stomach cramps and fever) even as late as two or more months after having taken the last dose of the antibiotic. If this occurs, patients should contact their physician as soon as possible.

**Drug Interactions:** In a pharmacokinetic study, systemic exposure of tizanidine (4 mg single dose) was significantly increased (C<sub>max</sub> 7-fold, AUC 10-fold) when the drug was given concomitantly with ciprofloxacin (500 mg bid for 3 days). The hypotensive and sedative effects of tizanidine were also potentiated. Concomitant administration of tizanidine and ciprofloxacin is contraindicated.

As with some other quinolones, concurrent administration of ciprofloxacin with theophylline may lead to elevated serum concentrations of theophylline and prolongation of its elimination half-life. This may result in increased risk of theophylline-related adverse reactions. (See **WARNINGS**.) If concomitant use cannot be avoided, serum levels of theophylline should be monitored and dosage adjustments made as appropriate.

Some quinolones, including ciprofloxacin, have also been shown to interfere with the metabolism of caffeine. This may lead to reduced clearance of caffeine and a prolongation of its serum half-life.

Concurrent administration of a quinolone, including ciprofloxacin, with multivalent cation-containing products such as magnesium/aluminum antacids, sucralfate, Videx<sup>®</sup> (didanosine) chewable/buffered tablets or pediatric powder, other highly buffered drugs, or products containing calcium, iron, or zinc may substantially decrease its absorption, resulting in serum and urine levels considerably lower than

desired. (See **DOSAGE AND ADMINISTRATION** for concurrent administration of these agents with ciprofloxacin.)

Histamine H<sub>2</sub>-receptor antagonists appear to have no significant effect on the bioavailability of ciprofloxacin.

Altered serum levels of phenytoin (increased and decreased) have been reported in patients receiving concomitant ciprofloxacin.

The concomitant administration of ciprofloxacin with the sulfonylurea glyburide has, on rare occasions, resulted in severe hypoglycemia.

Some quinolones, including ciprofloxacin, have been associated with transient elevations in serum creatinine in patients receiving cyclosporine concomitantly.

Quinolones, including ciprofloxacin, have been reported to enhance the effects of the oral anticoagulant warfarin or its derivatives. When these products are administered concomitantly, prothrombin time or other suitable coagulation tests should be closely monitored.

Probenecid interferes with renal tubular secretion of ciprofloxacin and produces an increase in the level of ciprofloxacin in the serum. This should be considered if patients are receiving both drugs concomitantly.

Renal tubular transport of methotrexate may be inhibited by concomitant administration of ciprofloxacin potentially leading to increased plasma levels of methotrexate. This might increase the risk of methotrexate associated toxic reactions. Therefore, patients under methotrexate therapy should be carefully monitored when concomitant ciprofloxacin therapy is indicated.

Metoclopramide significantly accelerates the absorption of oral ciprofloxacin resulting in shorter time to reach maximum plasma concentrations. No significant effect was observed on the bioavailability of ciprofloxacin.

Non-steroidal anti-inflammatory drugs (but not acetyl salicylic acid) in combination of very high doses of quinolones have been shown to provoke convulsions in pre-clinical studies.

**Carcinogenesis, Mutagenesis, Impairment of Fertility:** Eight *in vitro* mutagenicity tests have been conducted with ciprofloxacin, and the test results are listed below:

Salmonella/Microsome Test (Negative)

*E. coli* DNA Repair Assay (Negative)

Mouse Lymphoma Cell Forward Mutation Assay (Positive)

Chinese Hamster V<sub>79</sub> Cell HGPRT Test (Negative)

Syrian Hamster Embryo Cell Transformation Assay (Negative)

*Saccharomyces cerevisiae* Point Mutation Assay (Negative)

*Saccharomyces cerevisiae* Mitotic Crossover and Gene Conversion Assay (Negative)

Rat Hepatocyte DNA Repair Assay (Positive)

Thus, 2 of the 8 tests were positive, but results of the following 3 *in vivo* test systems gave negative results:

Rat Hepatocyte DNA Repair Assay

Micronucleus Test (Mice)

Dominant Lethal Test (Mice)

Long-term carcinogenicity studies in rats and mice resulted in no carcinogenic or tumorigenic effects due to ciprofloxacin at daily oral dose levels up to 250 and 750 mg/kg to rats and mice, respectively (approximately 1.7- and 2.5- times the highest recommended therapeutic dose based upon mg/m<sup>2</sup>).

Results from photo co-carcinogenicity testing indicate that ciprofloxacin does not reduce the time to appearance of UV-induced skin tumors as compared to vehicle control. Hairless (Skh-1) mice were

exposed to UVA light for 3.5 hours five times every two weeks for up to 78 weeks while concurrently being administered ciprofloxacin. The time to development of the first skin tumors was 50 weeks in mice treated concomitantly with UVA and ciprofloxacin (mouse dose approximately equal to maximum recommended human dose based upon  $\text{mg}/\text{m}^2$ ), as opposed to 34 weeks when animals were treated with both UVA and vehicle. The times to development of skin tumors ranged from 16-32 weeks in mice treated concomitantly with UVA and other quinolones.<sup>3</sup>

In this model, mice treated with ciprofloxacin alone did not develop skin or systemic tumors. There are no data from similar models using pigmented mice and/or fully haired mice. The clinical significance of these findings to humans is unknown.

Fertility studies performed in rats at oral doses of ciprofloxacin up to 100 mg/kg (approximately 0.7-times the highest recommended therapeutic dose based upon  $\text{mg}/\text{m}^2$ ) revealed no evidence of impairment.

**Pregnancy: Teratogenic Effects. Pregnancy Category C:** There are no adequate and well-controlled studies in pregnant women. An expert review of published data on experiences with ciprofloxacin use during pregnancy by TERIS – the Teratogen Information System – concluded that therapeutic doses during pregnancy are unlikely to pose a substantial teratogenic risk (quantity and quality of data=fair), but the data are insufficient to state that there is no risk.<sup>7</sup>

A controlled prospective observational study followed 200 women exposed to fluoroquinolones (52.5% exposed to ciprofloxacin and 68% first trimester exposures) during gestation.<sup>8</sup> In utero exposure to fluoroquinolones during embryogenesis was not associated with increased risk of major malformations. The reported rates of major congenital malformations were 2.2% for the fluoroquinolone group and 2.6% for the control group (background incidence of major malformations is 1-5%). Rates of spontaneous abortions, prematurity and low birth weight did not differ between the groups and there were no clinically significant musculoskeletal dysfunctions up to one year of age in the ciprofloxacin exposed children.

Another prospective follow-up study reported on 549 pregnancies with fluoroquinolone exposure (93% first trimester exposures).<sup>9</sup> There were 70 ciprofloxacin exposures, all within the first trimester. The malformation rates among live-born babies exposed to ciprofloxacin and to fluoroquinolones overall were both within background incidence ranges. No specific patterns of congenital abnormalities were found. The study did not reveal any clear adverse reactions due to in utero exposure to ciprofloxacin.

No differences in the rates of prematurity, spontaneous abortions, or birth weight were seen in women exposed to ciprofloxacin during pregnancy.<sup>7,8</sup> However, these small postmarketing epidemiology studies, of which most experience is from short term, first trimester exposure, are insufficient to evaluate the risk for less common defects or to permit reliable and definitive conclusions regarding the safety of ciprofloxacin in pregnant women and their developing fetuses. Ciprofloxacin should not be used during pregnancy unless the potential benefit justifies the potential risk to both fetus and mother (see **WARNINGS**).

Reproduction studies have been performed in rats and mice using oral doses up to 100 mg/kg (0.6 and 0.3 times the maximum daily human dose based upon body surface area, respectively) and have revealed no evidence of harm to the fetus due to ciprofloxacin. In rabbits, oral ciprofloxacin dose levels of 30 and 100 mg/kg (approximately 0.4- and 1.3-times the highest recommended therapeutic dose based upon  $\text{mg}/\text{m}^2$ ) produced gastrointestinal toxicity resulting in maternal weight loss and an increased incidence of abortion, but no teratogenicity was observed at either dose level. After intravenous administration of doses up to 20 mg/kg (approximately 0.3-times the highest recommended therapeutic dose based upon  $\text{mg}/\text{m}^2$ ) no maternal toxicity was produced and no embryotoxicity or teratogenicity was observed. (See **WARNINGS**.)

**Nursing Mothers:** Ciprofloxacin is excreted in human milk. The amount of ciprofloxacin absorbed by the nursing infant is unknown. Because of the potential for serious adverse reactions in infants nursing from mothers taking ciprofloxacin, a decision should be made whether to discontinue nursing or to discontinue the drug, taking into account the importance of the drug to the mother.

**Pediatric Use:** Ciprofloxacin, like other quinolones, causes arthropathy and histological changes in weight-bearing joints of juvenile animals resulting in lameness. (See **ANIMAL PHARMACOLOGY**.)

*Inhalational Anthrax (Post-Exposure)*

Ciprofloxacin is indicated in pediatric patients for inhalational anthrax (post-exposure). The risk-benefit assessment indicates that administration of ciprofloxacin to pediatric patients is appropriate. For information regarding pediatric dosing in inhalational anthrax (post-exposure), see **DOSAGE AND ADMINISTRATION** and **INHALATIONAL ANTHRAX – ADDITIONAL INFORMATION**.

*Complicated Urinary Tract Infection and Pyelonephritis*

Ciprofloxacin is indicated for the treatment of complicated urinary tract infections and pyelonephritis due to *Escherichia coli*. Although effective in clinical trials, ciprofloxacin is not a drug of first choice in the pediatric population due to an increased incidence of adverse events compared to the controls, including events related to joints and/or surrounding tissues. The rates of these events in pediatric patients with complicated urinary tract infection and pyelonephritis within six weeks of follow-up were 9.3% (31/335) versus 6.0% (21/349) for control agents. The rates of these events occurring at any time up to the one year follow-up were 13.7% (46/335) and 9.5% (33/349), respectively. The rate of all adverse events regardless of drug relationship at six weeks was 41% (138/335) in the ciprofloxacin arm compared to 31% (109/349) in the control arm. (See **ADVERSE REACTIONS** and **CLINICAL STUDIES**.)

*Cystic Fibrosis*

Short-term safety data from a single trial in pediatric cystic fibrosis patients are available. In a randomized, double-blind clinical trial for the treatment of acute pulmonary exacerbations in cystic fibrosis patients (ages 5-17 years), 67 patients received ciprofloxacin I.V. 10 mg/kg/dose q8h for one week followed by ciprofloxacin tablets 20 mg/kg/dose q12h to complete 10-21 days treatment and 62 patients received the combination of ceftazidime I.V. 50 mg/kg/dose q8h and tobramycin I.V. 3 mg/kg/dose q8h for a total of 10-21 days. Patients less than 5 years of age were not studied. Safety monitoring in the study included periodic range of motion examinations and gait assessments by treatment-blinded examiners. Patients were followed for an average of 23 days after completing treatment (range 0-93 days). This study was not designed to determine long term effects and the safety of repeated exposure to ciprofloxacin. Musculoskeletal adverse events in patients with cystic fibrosis were reported in 22% of the patients in the ciprofloxacin group and 21% in the comparison group. Decreased range of motion was reported in 12% of the subjects in the ciprofloxacin group and 16% in the comparison group. Arthralgia was reported in 10% of the patients in the ciprofloxacin group and 11% in the comparison group. Other adverse events were similar in nature and frequency between treatment arms. One of sixty-seven patients developed arthritis of the knee nine days after a ten day course of treatment with ciprofloxacin. Clinical symptoms resolved, but an MRI showed knee effusion without other abnormalities eight months after treatment. However, the relationship of this event to the patient's course of ciprofloxacin can not be definitively determined, particularly since patients with cystic fibrosis may develop arthralgias/arthritis as part of their underlying disease process.

**Geriatric Use:** In a retrospective analysis of 23 multiple-dose controlled clinical trials of ciprofloxacin encompassing over 3500 ciprofloxacin treated patients, 25% of patients were greater than or equal to 65 years of age and 10% were greater than or equal to 75 years of age. No overall differences in safety or effectiveness were observed between these subjects and younger subjects, and other reported clinical experience has not identified differences in responses between the elderly and younger patients, but greater sensitivity of some older individuals on any drug therapy cannot be ruled out. Ciprofloxacin is known to be substantially excreted by the kidney, and the risk of adverse reactions may be greater in patients with impaired renal function. No alteration of dosage is necessary for patients greater than 65 years of age with normal renal function. However, since some older individuals experience reduced renal function by virtue of their advanced age, care should be taken in dose selection for elderly patients, and renal function monitoring may be useful in these patients. (See **CLINICAL PHARMACOLOGY** and **DOSAGE AND ADMINISTRATION**.)

In general, elderly patients may be more susceptible to drug-associated effects on the QT interval. Therefore, precaution should be taken when using CIPRO with concomitant drugs that can result in prolongation of the QT interval (e.g., class IA or class III antiarrhythmics) or in patients with risk factors for torsade de pointes (e.g., known QT prolongation, uncorrected hypokalemia).

Patients over 65 years of age are at increased risk for developing severe tendon disorders including tendon rupture when being treated with a fluoroquinolone such as CIPRO. This risk is further increased in patients receiving concomitant corticosteroid therapy. Tendon rupture usually involves the Achilles, hand, or shoulder tendons and can occur during therapy or up to a few months post completion of therapy. Caution should be used when prescribing CIPRO to elderly patients especially those on corticosteroids. Patients should be informed of this potential side effect and advised to discontinue therapy and inform their physicians if any tendon symptoms occur.

## **ADVERSE REACTIONS**

**Adverse Reactions in Adult Patients:** During clinical investigations with oral and parenteral ciprofloxacin, 49,038 patients received courses of the drug. Most of the adverse events reported were described as only mild or moderate in severity, abated soon after the drug was discontinued, and required no treatment. Ciprofloxacin was discontinued because of an adverse event in 1.0% of orally treated patients.

The most frequently reported drug related events, from clinical trials of all formulations, all dosages, all drug-therapy durations, and for all indications of ciprofloxacin therapy were nausea (2.5%), diarrhea (1.6%), liver function tests abnormal (1.3%), vomiting (1.0%), and rash (1.0%).

Additional medically important events that occurred in less than 1% of ciprofloxacin patients are listed below.

**BODY AS A WHOLE:** headache, abdominal pain/discomfort, foot pain, pain, pain in extremities, injection site reaction (ciprofloxacin intravenous)

**CARDIOVASCULAR:** palpitation, atrial flutter, ventricular ectopy, syncope, hypertension, angina pectoris, myocardial infarction, cardiopulmonary arrest, cerebral thrombosis, phlebitis, tachycardia, migraine, hypotension

**CENTRAL NERVOUS SYSTEM:** restlessness, dizziness, lightheadedness, insomnia, nightmares, hallucinations, manic reaction, irritability, tremor, ataxia, convulsive seizures, lethargy, drowsiness, weakness, malaise, anorexia, phobia, depersonalization, depression,

paresthesia, abnormal gait, grand mal convulsion

GASTROINTESTINAL: painful oral mucosa, oral candidiasis, dysphagia, intestinal perforation, gastrointestinal bleeding, cholestatic jaundice, hepatitis

HEMIC/LYMPHATIC: lymphadenopathy, petechia

METABOLIC/NUTRITIONAL: amylase increase, lipase increase

MUSCULOSKELETAL: arthralgia or back pain, joint stiffness, achiness, neck or chest pain, flare up of gout

RENAL/UROGENITAL: interstitial nephritis, nephritis, renal failure, polyuria, urinary retention, urethral bleeding, vaginitis, acidosis, breast pain

RESPIRATORY: dyspnea, epistaxis, laryngeal or pulmonary edema, hiccough, hemoptysis, bronchospasm, pulmonary embolism

SKIN/HYPERSENSITIVITY: allergic reaction, pruritus, urticaria, photosensitivity, flushing, fever, chills, angioedema, edema of the face, neck, lips, conjunctivae or hands, cutaneous candidiasis, hyperpigmentation, erythema nodosum, sweating

SPECIAL SENSES: blurred vision, disturbed vision (change in color perception, overbrightness of lights), decreased visual acuity, diplopia, eye pain, tinnitus, hearing loss, bad taste, chromatopsia

In several instances nausea, vomiting, tremor, irritability, or palpitation were judged by investigators to be related to elevated serum levels of theophylline possibly as a result of drug interaction with ciprofloxacin. In randomized, double-blind controlled clinical trials comparing ciprofloxacin tablets (500 mg BID) to cefuroxime axetil (250 mg - 500 mg BID) and to clarithromycin (500 mg BID) in patients with respiratory tract infections, ciprofloxacin demonstrated a CNS adverse event profile comparable to the control drugs.

**Adverse Reactions in Pediatric Patients:** Ciprofloxacin, administered I.V. and/or orally, was compared to a cephalosporin for treatment of complicated urinary tract infections (cUTI) or pyelonephritis in pediatric patients 1 to 17 years of age (mean age of  $6 \pm 4$  years). The trial was conducted in the US, Canada, Argentina, Peru, Costa Rica, Mexico, South Africa, and Germany. The duration of therapy was 10 to 21 days (mean duration of treatment was 11 days with a range of 1 to 88 days). The primary objective of the study was to assess musculoskeletal and neurological safety within 6 weeks of therapy and through one year of follow-up in the 335 ciprofloxacin- and 349 comparator-treated patients enrolled.

An Independent Pediatric Safety Committee (IPSC) reviewed all cases of musculoskeletal adverse events as well as all patients with an abnormal gait or abnormal joint exam (baseline or treatment-emergent). These events were evaluated in a comprehensive fashion and included such conditions as arthralgia, abnormal gait, abnormal joint exam, joint sprains, leg pain, back pain, arthrosis, bone pain, pain, myalgia, arm pain, and decreased range of motion in a joint. The affected joints included: knee, elbow, ankle, hip, wrist, and shoulder. Within 6 weeks of treatment initiation, the rates of these events were 9.3% (31/335) in the ciprofloxacin-treated group versus 6.0% (21/349) in comparator-treated patients. The majority of these events were mild or moderate in intensity. All musculoskeletal events occurring by 6 weeks resolved (clinical resolution of signs and symptoms), usually within 30 days of end of treatment. Radiological evaluations were not routinely used to confirm resolution of the events. The events occurred more frequently in ciprofloxacin-treated patients than control patients, regardless of whether they received I.V. or oral therapy. Ciprofloxacin-treated patients were more likely to report more than one event and on more than one occasion compared to control

patients. These events occurred in all age groups and the rates were consistently higher in the ciprofloxacin group compared to the control group. At the end of 1 year, the rate of these events reported at any time during that period was 13.7% (46/335) in the ciprofloxacin-treated group versus 9.5% (33/349) comparator-treated patients.

An adolescent female discontinued ciprofloxacin for wrist pain that developed during treatment. An MRI performed 4 weeks later showed a tear in the right ulnar fibrocartilage. A diagnosis of overuse syndrome secondary to sports activity was made, but a contribution from ciprofloxacin cannot be excluded. The patient recovered by 4 months without surgical intervention.

### Findings Involving Joint or Peri-articular Tissues as Assessed by the IPSC

	Ciprofloxacin	Comparator
All Patients (within 6 weeks)	31/335 (9.3%)	21/349 (6.0%)
95% Confidence Interval*	(-0.8%, +7.2%)	
Age Group		
≥ 12 months < 24 months	1/36 (2.8%)	0/41
≥ 2 years < 6 years	5/124 (4.0%)	3/118 (2.5%)
≥ 6 years < 12 years	18/143 (12.6%)	12/153 (7.8%)
≥ 12 years to 17 years	7/32 (21.9%)	6/37 (16.2 %)
All Patients (within 1 year)	46/335 (13.7%)	33/349 (9.5%)
95% Confidence Interval*	(-0.6%, + 9.1%)	

\*The study was designed to demonstrate that the arthropathy rate for the ciprofloxacin group did not exceed that of the control group by more than + 6%. At both the 6 week and 1 year evaluations, the 95% confidence interval indicated that it could not be concluded that ciprofloxacin group had findings comparable to the control group.

The incidence rates of neurological events within 6 weeks of treatment initiation were 3% (9/335) in the ciprofloxacin group versus 2% (7/349) in the comparator group and included dizziness, nervousness, insomnia, and somnolence.

In this trial, the overall incidence rates of adverse events regardless of relationship to study drug and within 6 weeks of treatment initiation were 41% (138/335) in the ciprofloxacin group versus 31% (109/349) in the comparator group. The most frequent events were gastrointestinal: 15% (50/335) of ciprofloxacin patients compared to 9% (31/349) of comparator patients. Serious adverse events were seen in 7.5% (25/335) of ciprofloxacin-treated patients compared to 5.7% (20/349) of control patients. Discontinuation of drug due to an adverse event was observed in 3% (10/335) of ciprofloxacin-treated patients versus 1.4% (5/349) of comparator patients. Other adverse events that occurred in at least 1% of ciprofloxacin patients were diarrhea 4.8%, vomiting 4.8%, abdominal pain 3.3%, accidental injury 3.0%, rhinitis 3.0%, dyspepsia 2.7%, nausea 2.7%, fever 2.1%, asthma 1.8% and rash 1.8%.

In addition to the events reported in pediatric patients in clinical trials, it should be expected that events reported in adults during clinical trials or post-marketing experience may also occur in pediatric patients.

**Post-Marketing Adverse Events:** The following adverse events have been reported from worldwide marketing experience with quinolones, including ciprofloxacin. Because these events are reported voluntarily from a population of uncertain size, it is not always possible to reliably estimate their frequency or establish a causal relationship to drug exposure. Decisions to include these events in labeling are typically based on one or more of the following factors: (1) seriousness of the event, (2) frequency of the reporting, or (3) strength of causal connection to the drug.

Agitation, agranulocytosis, albuminuria, anaphylactic reactions (including life-threatening anaphylactic shock), anosmia, candiduria, cholesterol elevation (serum), confusion, constipation, delirium, dyspepsia, dysphagia, erythema multiforme, exfoliative dermatitis, fixed eruption, flatulence, glucose elevation (blood), hemolytic anemia, hepatic failure (including fatal cases), hepatic necrosis, hyperesthesia, hypertonia, hypesthesia, hypotension (postural), jaundice, marrow depression (life threatening), methemoglobinemia, moniliasis (oral, gastrointestinal, vaginal), myalgia, myasthenia, myasthenia gravis (possible exacerbation), myoclonus, nystagmus, pancreatitis, pancytopenia (life threatening or fatal outcome), peripheral neuropathy, phenytoin alteration (serum), potassium elevation (serum), prothrombin time prolongation or decrease, pseudomembranous colitis (The onset of pseudomembranous colitis symptoms may occur during or after antimicrobial treatment.), psychosis (toxic), renal calculi, serum sickness like reaction, Stevens-Johnson syndrome, taste loss, tendinitis, tendon rupture, torsade de pointes, toxic epidermal necrolysis (Lyell's Syndrome), triglyceride elevation (serum), twitching, vaginal candidiasis, and vasculitis. (See **PRECAUTIONS.**)

Adverse events were also reported by persons who received ciprofloxacin for anthrax post-exposure prophylaxis following the anthrax bioterror attacks of October 2001. (See also **INHALATIONAL ANTHRAX - ADDITIONAL INFORMATION.**)

**Adverse Laboratory Changes:** Changes in laboratory parameters listed as adverse events without regard to drug relationship are listed below:

- Hepatic – Elevations of ALT (SGPT) (1.9%), AST (SGOT) (1.7%), alkaline phosphatase (0.8%), LDH (0.4%), serum bilirubin (0.3%).
- Hematologic – Eosinophilia (0.6%), leukopenia (0.4%), decreased blood platelets (0.1%), elevated blood platelets (0.1%), pancytopenia (0.1%).
- Renal – Elevations of serum creatinine (1.1%), BUN (0.9%), **CRYSTALLURIA, CYLINDRURIA, AND HEMATURIA HAVE BEEN REPORTED.**

Other changes occurring in less than 0.1% of courses were: elevation of serum gammaglutamyl transferase, elevation of serum amylase, reduction in blood glucose, elevated uric acid, decrease in hemoglobin, anemia, bleeding diathesis, increase in blood monocytes, leukocytosis.

### **OVERDOSAGE**

In the event of acute overdosage, reversible renal toxicity has been reported in some cases. The stomach should be emptied by inducing vomiting or by gastric lavage. The patient should be carefully observed and given supportive treatment, including monitoring of renal function and administration of magnesium, aluminum, or calcium containing antacids which can reduce the absorption of ciprofloxacin. Adequate hydration must be maintained. Only a small amount of ciprofloxacin (< 10%) is removed from the body after hemodialysis or peritoneal dialysis.

Single doses of ciprofloxacin were relatively non-toxic via the oral route of administration in mice, rats, and dogs. No deaths occurred within a 14-day post treatment observation period at the highest oral doses tested; up to 5000 mg/kg in either rodent species, or up to 2500 mg/kg in the dog. Clinical signs

observed included hypoactivity and cyanosis in both rodent species and severe vomiting in dogs. In rabbits, significant mortality was seen at doses of ciprofloxacin > 2500 mg/kg. Mortality was delayed in these animals, occurring 10-14 days after dosing.

In mice, rats, rabbits and dogs, significant toxicity including tonic/clonic convulsions was observed at intravenous doses of ciprofloxacin between 125 and 300 mg/kg.

### DOSAGE AND ADMINISTRATION - ADULTS

CIPRO Tablets and Oral Suspension should be administered orally to adults as described in the Dosage Guidelines table.

The determination of dosage for any particular patient must take into consideration the severity and nature of the infection, the susceptibility of the causative organism, the integrity of the patient's host-defense mechanisms, and the status of renal function and hepatic function.

The duration of treatment depends upon the severity of infection. The usual duration is 7 to 14 days; however, for severe and complicated infections more prolonged therapy may be required. Ciprofloxacin should be administered at least 2 hours before or 6 hours after magnesium/aluminum antacids, or sucralfate, Videx<sup>®</sup> (didanosine) chewable/buffered tablets or pediatric powder for oral solution, other highly buffered drugs, or other products containing calcium, iron or zinc.

### ADULT DOSAGE GUIDELINES

<b>Infection</b>	<b>Severity</b>	<b>Dose</b>	<b>Frequency</b>	<b>Usual Durations<sup>†</sup></b>
Urinary Tract	Acute Uncomplicated	250 mg	q 12 h	3 Days
	Mild/Moderate	250 mg	q 12 h	7 to 14 Days
	Severe/Complicated	500 mg	q 12 h	7 to 14 Days
Chronic Bacterial Prostatitis	Mild/Moderate	500 mg	q 12 h	28 Days
Lower Respiratory Tract	Mild/Moderate	500 mg	q 12 h	7 to 14 days
	Severe/Complicated	750 mg	q 12 h	7 to 14 days
Acute Sinusitis	Mild/Moderate	500 mg	q 12 h	10 days
Skin and Skin Structure	Mild/Moderate	500 mg	q 12 h	7 to 14 Days
	Severe/Complicated	750 mg	q 12 h	7 to 14 Days
Bone and Joint	Mild/Moderate	500 mg	q 12 h	≥ 4 to 6 weeks
	Severe/Complicated	750 mg	q 12 h	≥ 4 to 6 weeks
Intra-Abdominal*	Complicated	500 mg	q 12 h	7 to 14 Days
Infectious Diarrhea	Mild/Moderate/Severe	500 mg	q 12 h	5 to 7 Days
Typhoid Fever	Mild/Moderate	500 mg	q 12 h	10 Days
Urethral and Cervical Gonococcal Infections	Uncomplicated	250 mg	single dose	single dose
Inhalational anthrax (post-exposure)**		500 mg	q 12 h	60 Days

\* used in conjunction with metronidazole

† Generally ciprofloxacin should be continued for at least 2 days after the signs and symptoms of infection have disappeared, except for inhalational anthrax (post-exposure).

\*\* Drug administration should begin as soon as possible after suspected or confirmed exposure.

This indication is based on a surrogate endpoint, ciprofloxacin serum concentrations achieved in humans, reasonably likely to predict clinical benefit.<sup>4</sup> For a discussion of ciprofloxacin serum concentrations in various human populations, see **INHALATIONAL ANTHRAX – ADDITIONAL INFORMATION.**

**Conversion of I.V. to Oral Dosing in Adults:** Patients whose therapy is started with CIPRO I.V. may be switched to CIPRO Tablets or Oral Suspension when clinically indicated at the discretion of the physician (See **CLINICAL PHARMACOLOGY** and table below for the equivalent dosing regimens).

#### Equivalent AUC Dosing Regimens

<u>Cipro Oral Dosage</u>	<u>Equivalent Cipro I.V. Dosage</u>
250 mg Tablet q 12 h	200 mg I.V. q 12 h
500 mg Tablet q 12 h	400 mg I.V. q 12 h
750 mg Tablet q 12 h	400 mg I.V. q 8 h

**Adults with Impaired Renal Function:** Ciprofloxacin is eliminated primarily by renal excretion; however, the drug is also metabolized and partially cleared through the biliary system of the liver and through the intestine. These alternative pathways of drug elimination appear to compensate for the reduced renal excretion in patients with renal impairment. Nonetheless, some modification of dosage is recommended, particularly for patients with severe renal dysfunction. The following table provides dosage guidelines for use in patients with renal impairment:

#### RECOMMENDED STARTING AND MAINTENANCE DOSES FOR PATIENTS WITH IMPAIRED RENAL FUNCTION

<u>Creatinine Clearance (mL/min)</u>	<u>Dose</u>
> 50	See Usual Dosage.
30 – 50	250 – 500 mg q 12 h
5 – 29	250 – 500 mg q 18 h
Patients on hemodialysis or Peritoneal dialysis	250 – 500 mg q 24 h (after dialysis)

When only the serum creatinine concentration is known, the following formula may be used to estimate creatinine clearance.

$$\text{Men: Creatinine clearance (mL/min)} = \frac{\text{Weight (kg)} \times (140 - \text{age})}{72 \times \text{serum creatinine (mg/dL)}}$$

Women: 0.85 x the value calculated for men.

The serum creatinine should represent a steady state of renal function.

In patients with severe infections and severe renal impairment, a unit dose of 750 mg may be administered at the intervals noted above. Patients should be carefully monitored.

#### DOSAGE AND ADMINISTRATION - PEDIATRICS

CIPRO Tablets and Oral Suspension should be administered orally as described in the Dosage Guidelines table. An increased incidence of adverse events compared to controls, including events related to joints and/or surrounding tissues, has been observed. (See **ADVERSE REACTIONS** and **CLINICAL STUDIES.**)

Dosing and initial route of therapy (i.e., I.V. or oral) for complicated urinary tract infection or pyelonephritis should be determined by the severity of the infection. In the clinical trial, pediatric patients with moderate to severe infection were initiated on 6 to 10 mg/kg I.V. every 8 hours and allowed to switch to oral therapy (10 to 20 mg/kg every 12 hours), at the discretion of the physician.

<b>PEDIATRIC DOSAGE GUIDELINES</b>				
Infection	Route of Administration	Dose (mg/kg)	Frequency	Total Duration
Complicated Urinary Tract or Pyelonephritis  (patients from 1 to 17 years of age)	Intravenous	6 to 10 mg/kg (maximum 400 mg per dose; not to be exceeded even in patients weighing > 51 kg)	Every 8 hours	10-21 days*
	Oral	10 mg/kg to 20 mg/kg (maximum 750 mg per dose; not to be exceeded even in patients weighing > 51 kg)	Every 12 hours	
Inhalational Anthrax (Post-Exposure)**	Intravenous	10 mg/kg (maximum 400 mg per dose)	Every 12 hours	60 days
	Oral	15 mg/kg (maximum 500 mg per dose)	Every 12 hours	

\* The total duration of therapy for complicated urinary tract infection and pyelonephritis in the clinical trial was determined by the physician. The mean duration of treatment was 11 days (range 10 to 21 days).

\*\* Drug administration should begin as soon as possible after suspected or confirmed exposure to *Bacillus anthracis* spores. This indication is based on a surrogate endpoint, ciprofloxacin serum concentrations achieved in humans, reasonably likely to predict clinical benefit.<sup>4</sup> For a discussion of ciprofloxacin serum concentrations in various human populations, see **INHALATIONAL ANTHRAX – ADDITIONAL INFORMATION**.

Pediatric patients with moderate to severe renal insufficiency were excluded from the clinical trial of complicated urinary tract infection and pyelonephritis. No information is available on dosing adjustments necessary for pediatric patients with moderate to severe renal insufficiency (i.e., creatinine clearance of < 50 mL/min/1.73m<sup>2</sup>).

### **HOW SUPPLIED**

CIPRO (ciprofloxacin hydrochloride) Tablets are available as round, slightly yellowish film-coated tablets containing 250 mg ciprofloxacin. The 250 mg tablet is coded with the word “CIPRO” on one side and “250” on the reverse side. CIPRO is also available as capsule shaped, slightly yellowish film-coated tablets containing 500 mg or 750 mg ciprofloxacin. The 500 mg tablet is coded with the word “CIPRO” on one side and “500” on the reverse side. The 750 mg tablet is coded with the word “CIPRO” on one side and “750” on the reverse side. CIPRO 250 mg, 500 mg, and 750 mg are available in bottles of 50, 100, and Unit Dose packages of 100.

	<b>Strength</b>	<b>NDC Code</b>	<b>Tablet Identification</b>
Bottles of 50:	750 mg	NDC 0085-1756-01	CIPRO 750
Bottles of 100:	250 mg	NDC 0085-1758-01	CIPRO 250
	500 mg	NDC 0085-1754-01	CIPRO 500
Unit Dose			
Package of 100:	250 mg	NDC 0085-1758-02	CIPRO 250
	500 mg	NDC 0085-1754-02	CIPRO 500
	750 mg	NDC 0085-1756-02	CIPRO 750

**Store below 30°C (86°F).**

CIPRO Oral Suspension is supplied in 5% and 10% strengths. The drug product is composed of two components (microcapsules containing the active ingredient and diluent) which must be mixed by the pharmacist. See Instructions To The Pharmacist For Use/Handling.

<b>Strengths</b>	<b>Total volume after reconstitution</b>	<b>Ciprofloxacin Concentration</b>	<b>Ciprofloxacin contents per bottle</b>	<b>NDC Code</b>
5%	100 mL	250 mg/5 mL	5,000 mg	0085-1777-01
10%	100 mL	500 mg/5 mL	10,000 mg	0085-1773-01

**Microcapsules and diluent should be stored below 25°C (77°F) and protected from freezing.**

**Reconstituted product may be stored below 30°C (86°F) for 14 days. Protect from freezing.** A teaspoon is provided for the patient.

### **ANIMAL PHARMACOLOGY**

Ciprofloxacin and other quinolones have been shown to cause arthropathy in immature animals of most species tested. (See **WARNINGS**.) Damage of weight bearing joints was observed in juvenile dogs and rats. In young beagles, 100 mg/kg ciprofloxacin, given daily for 4 weeks, caused degenerative articular changes of the knee joint. At 30 mg/kg, the effect on the joint was minimal. In a subsequent study in young beagle dogs, oral ciprofloxacin doses of 30 mg/kg and 90 mg/kg ciprofloxacin (approximately 1.3- and 3.5-times the pediatric dose based upon comparative plasma AUCs) given daily for 2 weeks caused articular changes which were still observed by histopathology after a treatment-free period of 5 months. At 10 mg/kg (approximately 0.6-times the pediatric dose based upon comparative plasma AUCs), no effects on joints were observed. This dose was also not associated with arthrototoxicity after an additional treatment-free period of 5 months. In another study, removal of weight bearing from the joint reduced the lesions but did not totally prevent them.

Crystalluria, sometimes associated with secondary nephropathy, occurs in laboratory animals dosed with ciprofloxacin. This is primarily related to the reduced solubility of ciprofloxacin under alkaline conditions, which predominate in the urine of test animals; in man, crystalluria is rare since human urine is typically acidic. In rhesus monkeys, crystalluria without nephropathy was noted after single oral doses as low as 5 mg/kg. (approximately 0.07-times the highest recommended therapeutic dose based upon mg/m<sup>2</sup>). After 6 months of intravenous dosing at 10 mg/kg/day, no nephropathological changes were noted; however, nephropathy was observed after dosing at 20 mg/kg/day for the same duration (approximately 0.2-times the highest recommended therapeutic dose based upon mg/m<sup>2</sup>).

In dogs, ciprofloxacin at 3 and 10 mg/kg by rapid I.V. injection (15 sec.) produces pronounced hypotensive effects. These effects are considered to be related to histamine release, since they are partially antagonized by pyrilamine, an antihistamine. In rhesus monkeys, rapid I.V. injection also produces hypotension but the effect in this species is inconsistent and less pronounced.

In mice, concomitant administration of nonsteroidal anti-inflammatory drugs such as phenylbutazone and indomethacin with quinolones has been reported to enhance the CNS stimulatory effect of quinolones.

Ocular toxicity seen with some related drugs has not been observed in ciprofloxacin-treated animals.

### CLINICAL STUDIES

#### Complicated Urinary Tract Infection and Pyelonephritis – Efficacy in Pediatric Patients:

NOTE: Although effective in clinical trials, ciprofloxacin is not a drug of first choice in the pediatric population due to an increased incidence of adverse events compared to controls, including events related to joints and/or surrounding tissues.

Ciprofloxacin, administered I.V. and/or orally, was compared to a cephalosporin for treatment of complicated urinary tract infections (cUTI) and pyelonephritis in pediatric patients 1 to 17 years of age (mean age of  $6 \pm 4$  years). The trial was conducted in the US, Canada, Argentina, Peru, Costa Rica, Mexico, South Africa, and Germany. The duration of therapy was 10 to 21 days (mean duration of treatment was 11 days with a range of 1 to 88 days). The primary objective of the study was to assess musculoskeletal and neurological safety.

Patients were evaluated for clinical success and bacteriological eradication of the baseline organism(s) with no new infection or superinfection at 5 to 9 days post-therapy (Test of Cure or TOC). The Per Protocol population had a causative organism(s) with protocol specified colony count(s) at baseline, no protocol violation, and no premature discontinuation or loss to follow-up (among other criteria).

The clinical success and bacteriologic eradication rates in the Per Protocol population were similar between ciprofloxacin and the comparator group as shown below.

#### Clinical Success and Bacteriologic Eradication at Test of Cure (5 to 9 Days Post-Therapy)

	CIPRO	Comparator
Randomized Patients	337	352
Per Protocol Patients	211	231
Clinical Response at 5 to 9 Days Post-Treatment	95.7% (202/211)	92.6% (214/231)
95% CI [-1.3%, 7.3%]		
Bacteriologic Eradication by Patient at 5 to 9 Days Post-Treatment*	84.4% (178/211)	78.3% (181/231)
95% CI [ -1.3%, 13.1% ]		
Bacteriologic Eradication of the Baseline Pathogen at 5 to 9 Days Post-Treatment		
<i>Escherichia coli</i>	156/178 (88%)	161/179 (90%)

\* Patients with baseline pathogen(s) eradicated and no new infections or superinfections/total number of patients. There were 5.5% (6/211) ciprofloxacin and 9.5% (22/231) comparator patients with superinfections or new infections.

## INHALATIONAL ANTHRAX IN ADULTS AND PEDIATRICS – ADDITIONAL INFORMATION

The mean serum concentrations of ciprofloxacin associated with a statistically significant improvement in survival in the rhesus monkey model of inhalational anthrax are reached or exceeded in adult and pediatric patients receiving oral and intravenous regimens. (See **DOSAGE AND ADMINISTRATION**.) Ciprofloxacin pharmacokinetics have been evaluated in various human populations. The mean peak serum concentration achieved at steady-state in human adults receiving 500 mg orally every 12 hours is 2.97 µg/mL, and 4.56 µg/mL following 400 mg intravenously every 12 hours. The mean trough serum concentration at steady-state for both of these regimens is 0.2 µg/mL. In a study of 10 pediatric patients between 6 and 16 years of age, the mean peak plasma concentration achieved is 8.3 µg/mL and trough concentrations range from 0.09 to 0.26 µg/mL, following two 30-minute intravenous infusions of 10 mg/kg administered 12 hours apart. After the second intravenous infusion patients switched to 15 mg/kg orally every 12 hours achieve a mean peak concentration of 3.6 µg/mL after the initial oral dose. Long-term safety data, including effects on cartilage, following the administration of ciprofloxacin to pediatric patients are limited. (For additional information, see **PRECAUTIONS, Pediatric Use**.) Ciprofloxacin serum concentrations achieved in humans serve as a surrogate endpoint reasonably likely to predict clinical benefit and provide the basis for this indication.<sup>4</sup>

A placebo-controlled animal study in rhesus monkeys exposed to an inhaled mean dose of 11 LD<sub>50</sub> (~5.5 x 10<sup>5</sup> spores (range 5-30 LD<sub>50</sub>) of *B. anthracis* was conducted. The minimal inhibitory concentration (MIC) of ciprofloxacin for the anthrax strain used in this study was 0.08 µg/mL. In the animals studied, mean serum concentrations of ciprofloxacin achieved at expected T<sub>max</sub> (1 hour post-dose) following oral dosing to steady-state ranged from 0.98 to 1.69 µg/mL. Mean steady-state trough concentrations at 12 hours post-dose ranged from 0.12 to 0.19 µg/mL<sup>5</sup>. Mortality due to anthrax for animals that received a 30-day regimen of oral ciprofloxacin beginning 24 hours post-exposure was significantly lower (1/9), compared to the placebo group (9/10) [p= 0.001]. The one ciprofloxacin-treated animal that died of anthrax did so following the 30-day drug administration period.<sup>6</sup>

More than 9300 persons were recommended to complete a minimum of 60 days of antibiotic prophylaxis against possible inhalational exposure to *B. anthracis* during 2001. Ciprofloxacin was recommended to most of those individuals for all or part of the prophylaxis regimen. Some persons were also given anthrax vaccine or were switched to alternative antibiotics. No one who received ciprofloxacin or other therapies as prophylactic treatment subsequently developed inhalational anthrax. The number of persons who received ciprofloxacin as all or part of their post-exposure prophylaxis regimen is unknown.

Among the persons surveyed by the Centers for Disease Control and Prevention, over 1000 reported receiving ciprofloxacin as sole post-exposure prophylaxis for inhalational anthrax. Gastrointestinal adverse events (nausea, vomiting, diarrhea, or stomach pain), neurological adverse events (problems sleeping, nightmares, headache, dizziness or lightheadedness) and musculoskeletal adverse events (muscle or tendon pain and joint swelling or pain) were more frequent than had been previously reported in controlled clinical trials. This higher incidence, in the absence of a control group, could be explained by a reporting bias, concurrent medical conditions, other concomitant medications, emotional stress or other confounding factors, and/or a longer treatment period with ciprofloxacin. Because of these factors and limitations in the data collection, it is difficult to evaluate whether the reported symptoms were drug-related.

**Instructions To The Pharmacist For Use/Handling Of CIPRO Oral Suspension:**

CIPRO Oral Suspension is supplied in 5% (5 g ciprofloxacin in 100 mL) and 10% (10 g ciprofloxacin in 100 mL) strengths. The drug product is composed of two components (microcapsules and diluent) which must be combined prior to dispensing.

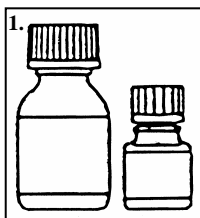
One teaspoonful (5 mL) of 5% ciprofloxacin oral suspension = 250 mg of ciprofloxacin.

One teaspoonful (5 mL) of 10% ciprofloxacin oral suspension = 500 mg of ciprofloxacin.

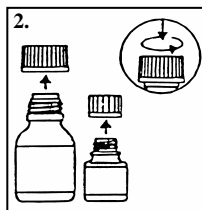
**Appropriate Dosing Volumes of the Oral Suspensions:**

<u>Dose</u>	<u>5%</u>	<u>10%</u>
250 mg	5 mL	2.5 mL
500 mg	10 mL	5 mL
750 mg	15 mL	7.5 mL

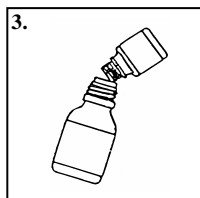
**Preparation of the suspension:**



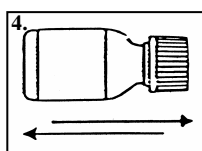
1. The small bottle contains the microcapsules, the large bottle contains the diluent.



2. Open both bottles. Child-proof cap: Press down according to instructions on the cap while turning to the left.



3. Pour the microcapsules completely into the larger bottle of diluent. **Do not add water to the suspension.**



4. Remove the top layer of the diluent bottle label (to reveal the CIPRO Oral Suspension label). Close the large bottle completely according to the directions on the cap and shake vigorously for about 15 seconds. The suspension is ready for use.

**CIPRO Oral Suspension should not be administered through feeding tubes due to its physical characteristics.**

**Instruct the patient to shake CIPRO Oral Suspension vigorously each time before use for approximately 15 seconds and not to chew the microcapsules.**

## References:

1. National Committee for Clinical Laboratory Standards, Methods for Dilution Antimicrobial Susceptibility Tests for Bacteria That Grow Aerobically-Fifth Edition. Approved Standard NCCLS Document M7-A5, Vol. 20, No. 2, NCCLS, Wayne, PA, January, 2000. 2. National Committee for Clinical Laboratory Standards, Performance Standards for Antimicrobial Disk Susceptibility Tests-Seven Edition. Approved Standard NCCLS Document M2-A7, Vol. 20, No. 1, NCCLS, Wayne, PA, January, 2000. 3. Report presented at the FDA's Anti-Infective Drug and Dermatological Drug Product's Advisory Committee meeting, March 31, 1993, Silver Spring, MD. Report available from FDA, CDER, Advisors and Consultants Staff, HFD-21, 1901 Chapman Avenue, Room 200, Rockville, MD 20852, USA. 4. 21 CFR 314.510 (Subpart H – Accelerated Approval of New Drugs for Life-Threatening Illnesses). 5. Kelly DJ, et al. Serum concentrations of penicillin, doxycycline, and ciprofloxacin during prolonged therapy in rhesus monkeys. *J Infect Dis* 1992; 166:1184-7. 6. Friedlander AM, et al. Postexposure prophylaxis against experimental inhalational anthrax. *J Infect Dis* 1993; 167:1239-42. 7. Friedman J, Polifka J. Teratogenic effects of drugs: a resource for clinicians (TERIS). Baltimore, Maryland: Johns Hopkins University Press, 2000:149-195. 8. Loebstein R, Addis A, Ho E, et al. Pregnancy outcome following gestational exposure to fluoroquinolones: a multicenter prospective controlled study. *Antimicrob Agents Chemother*. 1998;42(6):1336-1339. 9. Schaefer C, Amoura-Elefant E, Vial T, et al. Pregnancy outcome after prenatal quinolone exposure. Evaluation of a case registry of the European network of teratology information services (ENTIS). *Eur J Obstet Gynecol Reprod Biol*. 1996;69:83-89.

## Patient Information About:

**CIPRO<sup>®</sup>**  
**(ciprofloxacin hydrochloride) TABLETS**

**CIPRO<sup>®</sup>**  
**(ciprofloxacin\*) ORAL SUSPENSION**

This section contains important patient information about CIPRO (ciprofloxacin hydrochloride) Tablets and CIPRO (ciprofloxacin\*) Oral Suspension and should be read completely before you begin treatment. This section does not take the place of discussion with your doctor or health care professional about your medical condition or your treatment. This section does not list all benefits and risks of CIPRO. If you have any concerns about your condition or your medicine, ask your doctor. Only your doctor can determine if CIPRO is right for you.

### What is CIPRO?

CIPRO is an antibiotic used to treat bladder, kidney, prostate, cervix, stomach, intestine, lung, sinus, bone, and skin infections caused by certain germs called bacteria. CIPRO kills many types of bacteria that can infect these areas of the body. CIPRO has been shown in a large number of clinical trials to be safe and effective for the treatment of bacterial infections.

Sometimes viruses rather than bacteria may infect the lungs and sinuses (for example the common cold). CIPRO, like all other antibiotics, does not kill viruses. You should contact your doctor if your condition is not improving while taking CIPRO.

CIPRO Tablets are white to slightly yellow in color and are available in 250 mg, 500 mg and 750 mg strengths. CIPRO Oral Suspension is white to slightly yellow in color and is available in concentrations of 250 mg per teaspoon (5%) and 500 mg per teaspoon (10%).

### **How and when should I take CIPRO?**

#### **CIPRO Tablets:**

Unless directed otherwise by your physician, CIPRO should be taken twice a day at approximately the same time, in the morning and in the evening. CIPRO can be taken with food or on an empty stomach. CIPRO should not be taken with dairy products (like milk or yogurt) or calcium-fortified juices alone; however, CIPRO may be taken with a meal that contains these products.

You should take CIPRO for as long as your doctor prescribes it, even after you start to feel better. Stopping an antibiotic too early may result in failure to cure your infection. Do not take a double dose of CIPRO even if you miss a dose by mistake.

#### **CIPRO Oral Suspension:**

Take CIPRO Oral Suspension in the same way as above. In addition, remember to **shake the bottle vigorously each time before use for approximately 15 seconds** to make sure the suspension is mixed well. Be sure to swallow the required amount of suspension. Do not chew the microcapsules. Close the bottle completely after use. The product can be used for 14 days when stored in a refrigerator or at room temperature. After treatment has been completed, any remaining suspension should be discarded.

### **Who should not take CIPRO?**

You should not take CIPRO if you have ever had a severe reaction to any of the group of antibiotics known as “quinolones”. You should also not take CIPRO if you are also taking a medication called tizanidine (Zanaflex<sup>®</sup>), as excessive side effects from tizanidine are likely to occur.

CIPRO is not recommended during pregnancy or nursing, as the effects of CIPRO on the unborn child or nursing infant are unknown. If you are pregnant or plan to become pregnant while taking CIPRO talk to your doctor before taking this medication.

Due to possible side effects, CIPRO is not recommended for persons less than 18 years of age except for specific serious infections, such as complicated urinary tract infections.

### **What are the possible side effects of CIPRO?**

CIPRO is generally well tolerated. The most common side effects, which are usually mild, include nausea, diarrhea, vomiting, and abdominal pain/discomfort. If diarrhea persists, call your health care professional.

Rare cases of allergic reactions have been reported in patients receiving quinolones, including CIPRO, even after just one dose. If you develop hives, difficulty breathing, or other symptoms of a severe allergic reaction, seek emergency treatment right away. If you develop a skin rash, you should stop taking CIPRO and call your health care professional.

Some patients taking quinolone antibiotics may become more sensitive to sunlight or ultraviolet light such as that used in tanning salons. You should avoid excessive exposure to sunlight or ultraviolet light while you are taking CIPRO.

You should be careful about driving or operating machinery until you are sure CIPRO is not causing dizziness. Convulsions have been reported in patients receiving quinolone antibiotics including ciprofloxacin. Be sure to let your physician know if you have a history of convulsions. Quinolones, including ciprofloxacin, have been rarely associated with other central nervous system events including confusion, tremors, hallucinations, and depression.

Pain, swelling, and tears of Achilles, shoulder, or hand tendons have been reported in patients receiving fluoroquinolones, including CIPRO. The risk for tendon effects is higher if you are over 65 years of age, and especially if you are taking corticosteroids. If you develop pain, swelling, or rupture of a tendon you should stop taking CIPRO, refrain from exercise and strenuous use of the affected area, and contact your health care provider.

Diarrhea that usually ends after treatment is a common problem caused by antibiotics. A more serious form of diarrhea can occur during or up to 2 months after the use of antibiotics. This has been reported with all antibiotics including with CIPRO. If you develop a watery and bloody stool with or without stomach cramps and fever, contact your physician as soon as possible.

CIPRO has been associated with an increased rate of side effects with joints and surrounding structures (like tendons) in pediatric patients (less than 18 years of age). Parents should inform their child's physician if the child has a history of joint-related problems before taking this drug. Parents of pediatric patients should also notify their child's physician of any joint related problems that occur during or following CIPRO therapy.

If you notice any side effects not mentioned in this section, or if you have any concerns about side effects you may be experiencing, please inform your health care professional.

#### **What about other medications I am taking?**

CIPRO can affect how other medicines work. Tell your doctor about all other prescription and non-prescription medicines or supplements you are taking. This is especially important if you are taking tizanidine (Zanaflex<sup>®</sup>) or theophylline. You should not take Cipro if you are also taking tizanidine. Other medications including warfarin, glyburide, and phenytoin may also interact with CIPRO.

Many antacids, multivitamins, and other dietary supplements containing magnesium, calcium, aluminum, iron or zinc can interfere with the absorption of CIPRO and may prevent it from working. Other medications such as sulcrafate and Videx<sup>®</sup> (didanosine) chewable/buffered tablets or pediatric powder may also stop CIPRO from working. You should take CIPRO either 2 hours before or 6 hours after taking these products.

#### **What if I have been prescribed CIPRO for possible anthrax exposure?**

CIPRO has been approved to reduce the chance of developing anthrax infection following exposure to the anthrax bacteria. In general, CIPRO is not recommended for children; however, it is approved for use in patients younger than 18 years old for anthrax exposure. If you are pregnant, or plan to become pregnant while taking CIPRO, you and your doctor should discuss if the benefits of taking CIPRO for anthrax outweigh the risks.

CIPRO is generally well tolerated. Side effects that may occur during treatment to prevent anthrax might be acceptable due to the seriousness of the disease. You and your doctor should discuss the risks of not taking your medicine against the risks of experiencing side effects.

CIPRO can cause dizziness, confusion, or other similar side effects in some people. Therefore, it is important to know how CIPRO affects you before driving a car or performing other activities that require you to be alert and coordinated such as operating machinery.

Your doctor has prescribed CIPRO only for you. Do not give it to other people. Do not use it for a condition for which it was not prescribed. You should take your CIPRO for as long as your doctor prescribes it; stopping CIPRO too early may result in failure to prevent anthrax.

**Remember:**

Do not give CIPRO to anyone other than the person for whom it was prescribed.

Take your dose of CIPRO in the morning and in the evening.

Complete the course of CIPRO even if you are feeling better.

Keep CIPRO and all medications out of reach of children.

\* Does not comply with USP with regard to “loss on drying” and “residue on ignition”.

Manufactured by:



**Bayer HealthCare**

Bayer Pharmaceuticals Corporation  
400 Morgan Lane  
West Haven, CT 06516

Distributed by:



**Schering-Plough**

Schering Corporation  
Kenilworth, NJ 07033

CIPRO is a registered trademark of Bayer Aktiengesellschaft and is used under license by Schering Corporation.

**Rx Only**

08935877, R.3

5/07

Bay o 9867

5202-2-A-U.S.-22

13430

©2007 Bayer Pharmaceuticals Corporation

Printed in U.S.A.

CIPRO (ciprofloxacin\*) 5% and 10% Oral Suspension Made in Italy.

CIPRO (ciprofloxacin HCl) Tablets Made in Germany