

**HIGHLIGHTS OF PRESCRIBING INFORMATION**

These highlights do not include all the information needed to use CIPRO IV safely and effectively. See full prescribing information for CIPRO IV.

**CIPRO IV® (ciprofloxacin) injection, for intravenous use**  
**Initial U.S. Approval: 1987**

**WARNING: SERIOUS ADVERSE REACTIONS INCLUDING TENDINITIS, TENDON RUPTURE, PERIPHERAL NEUROPATHY, CENTRAL NERVOUS SYSTEM EFFECTS AND EXACERBATION OF MYASTHENIA GRAVIS**

*See full prescribing information for complete boxed warning.*

- Fluoroquinolones, including CIPRO IV®, have been associated with disabling and potentially irreversible serious adverse reactions that have occurred together (5.1), including:
  - Tendinitis and tendon rupture (5.2)
  - Peripheral neuropathy (5.3)
  - Central nervous system effects (5.4)

Discontinue CIPRO immediately and avoid the use of fluoroquinolones, including CIPRO, in patients who experience any of these serious adverse reactions (5.1)

- Fluoroquinolones, including CIPRO IV, may exacerbate muscle weakness in patients with myasthenia gravis. Avoid CIPRO IV in patients with known history of myasthenia gravis. (5.5)
- Because fluoroquinolones, including CIPRO, have been associated with serious adverse reactions (5.1-5.15), reserve CIPRO for use in patients who have no alternative treatment options for the following indications:
  - Acute exacerbation of chronic bronchitis (1.9)
  - Acute sinusitis (1.11)

----- RECENT MAJOR CHANGES -----

Warnings and Precautions (5.15) 7/2017

----- INDICATIONS AND USAGE -----

CIPRO IV is a fluoroquinolone antibacterial indicated in adults (≥18 years of age) with the following infections caused by designated, susceptible bacteria and in pediatric patients where indicated:

- Skin and Skin structure Infections (1.1)
- Bone and Joint infections (1.2)
- Complicated Intra-Abdominal infections (1.3)
- Nosocomial Pneumonia (1.4)
- Empirical Therapy for Febrile Neutropenic Patients (1.5)
- Inhalational Anthrax Post-Exposure in Adult and Pediatric Patients (1.6)
- Plague in adult and pediatric patients (1.7)
- Chronic Bacterial Prostatitis (1.8)
- Lower respiratory tract infections (1.9)
  - Acute Exacerbation of Chronic Bronchitis
- Urinary Tract Infections (1.10)
  - Urinary Tract Infections (UTI)
  - Complicated UTI and Pyelonephritis in Pediatric Patients
- Acute Sinusitis (1.11)

Usage

To reduce the development of drug-resistant bacteria and maintain the effectiveness of CIPRO IV and other antibacterial drugs, CIPRO IV should be used only to treat or prevent infections that are proven or strongly suspected to be caused by bacteria. (1.12)

----- DOSAGE AND ADMINISTRATION -----

Adult Dosage Guidelines			
Infection	Dose	Frequency	Duration
Skin and Skin Structure	400 mg	every 8 to 12 hours	7–14 days
Bone and Joint	400 mg	every 8 to 12 hours	4 to 8 weeks
Complicated Intra-Abdominal	400 mg	every 12 hours	7–14 days
Nosocomial Pneumonia	400 mg	every 8 hours	10–14 days
Empirical Therapy In Febrile Neutropenic Patients	400 mg	every 8 hours	7–14 days
	and Piperacillin 50 mg/kg	every 4 hours	
Inhalational anthrax(post-	400 mg	every 12 hours	60 days

Plague	400 mg	every 8 to 12 hours	14 days
Chronic Bacterial prostatitis	400 mg	every 12 hours	28 days
Lower Respiratory Tract	400 mg	every 8 to 12 hours	7–14 days
Urinary Tract	200 to 400 mg	every 8 to 12 hours	7–14 days
Acute Sinusitis	400 mg	every 12 hours	10 days

- Adults with creatinine clearance 5–29 mL/min 250–500 mg q 18 h (2.3)

**Pediatric Intravenous Dosing Guidelines**

Infection	Dose	Frequency	Duration
Complicated UTI and Pyelonephritis (patients from 1 to 17 years of age)	6 mg/kg to 10 mg/kg (maximum 400 mg per dose)	Every 8 hours	10–21 days <sup>1</sup>
Inhalational Anthrax (Post-Exposure)	10 mg/kg (maximum 400 mg per dose)	Every 12 hours	60 days
Plague	10 mg/kg (maximum 400 mg per dose)	Every 8 to 12 hours	10–21 days

----- DOSAGE FORMS AND STRENGTHS -----

- Injection: 400 mg/200 mL

----- CONTRAINDICATIONS -----

- Known hypersensitivity to CIPRO or other quinolones (4.1, 5.7)
- Concomitant administration with tizanidine (4.2)

----- WARNINGS AND PRECAUTIONS -----

- Hypersensitivity and other serious reactions: Serious and sometimes fatal reactions (for example, anaphylactic reactions) may occur after first or subsequent doses of CIPRO IV. Discontinue CIPRO IV at the first sign of skin rash, jaundice or any sign of hypersensitivity. (4.1, 5.6, 5.7)
- Hepatotoxicity: Discontinue immediately if signs and symptoms of hepatitis occur. (5.8)
- Clostridium difficile-Associated Diarrhea: Evaluate if colitis occurs. (5.10)
- QT Prolongation: Prolongation of the QT interval and isolated cases of torsade de pointes have been reported. Avoid use in patients with known prolongation, those with hypokalemia, and with other drugs that prolong the QT interval. (5.11, 7, 8.5)

----- ADVERSE REACTIONS -----

The most common adverse reactions ≥1% were nausea, diarrhea, liver function tests abnormal, vomiting, central nervous system disturbance, local intravenous site reactions eosinophilia, headache, restlessness, and rash. (6)

**TO REPORT SUSPECTED ADVERSE REACTIONS, CONTACT BAYER HealthCare Pharmaceuticals Inc. at 1-888-842-2937 or FDA at 1-800-FDA-1088 or [www.fda.gov/medwatch](http://www.fda.gov/medwatch).**

----- DRUG INTERACTIONS -----

Interacting Drug	Interaction
Theophylline	Serious and fatal reactions. Avoid concomitant use. Monitor serum level (7)
Warfarin	Anticoagulant effect enhanced. Monitor prothrombin time, INR, and bleeding (7)
Antidiabetic agents	Hypoglycemia including fatal outcomes have been reported. Monitor blood glucose (7)
Phenytoin	Monitor phenytoin level (7)
Methotrexate	Monitor for methotrexate toxicity (7)
Cyclosporine	May increase serum creatinine. Monitor serum creatinine (7)

----- USE IN SPECIFIC POPULATIONS -----

See full prescribing information for pediatric patients (8.4) and use in geriatric (8.5)

See 17 for PATIENT COUNSELING INFORMATION and Medication Guide

Revised: 7/2017

**FULL PRESCRIBING INFORMATION: CONTENTS**

**WARNING: SERIOUS ADVERSE REACTIONS INCLUDING TENDINITIS, TENDON RUPTURE, PERIPHERAL NEUROPATHY, CENTRAL NERVOUS SYSTEM EFFECTS AND EXACERBATION OF MYASTHENIA GRAVIS**

**1 INDICATIONS AND USAGE**

- 1.1 Skin and Skin Structure Infections
- 1.2 Bone and Joint Infections
- 1.3 Complicated Intra-Abdominal Infections
- 1.4 Nosocomial Pneumonia
- 1.5 Empirical Therapy for Febrile Neutropenia Patients
- 1.6 Inhalational Anthrax (Post-Exposure)
- 1.7 Plague
- 1.8 Chronic Bacterial Prostatitis
- 1.9 Lower Respiratory Tract Infections
- 1.10 Urinary Tract Infections
- 1.11 Acute Sinusitis
- 1.12 Usage

**2 DOSAGE AND ADMINISTRATION**

- 2.1 Dosage in Adults
- 2.2 Dosage in Pediatric Patients
- 2.3 Dosage Modifications in Patients with Renal Impairment
- 2.4 Preparation of CIPRO IV for Administration
- 2.5 Important Administration Instructions

**3 DOSAGE FORMS AND STRENGTHS**

**4 CONTRAINDICATIONS**

- 4.1 Hypersensitivity
- 4.2 Tizanidine

**5 WARNINGS AND PRECAUTIONS**

- 5.1 Disabling and Potentially Irreversible Serious Adverse Reactions Including Tendinitis and Tendon Rupture, Peripheral Neuropathy, and Central Nervous System Effects
- 5.2 Tendinitis and Tendon Rupture
- 5.3 Peripheral Neuropathy
- 5.4 Central Nervous System Effects
- 5.5 Exacerbation of Myasthenia Gravis
- 5.6 Other Serious and Sometimes Fatal Reactions
- 5.7 Hypersensitivity Reactions
- 5.8 Hepatotoxicity
- 5.9 Serious Adverse Reactions with Concomitant Theophylline
- 5.10 *Clostridium difficile*-Associated Diarrhea

- 5.11 Prolongation of the QT Interval
- 5.12 Musculoskeletal Disorders in Pediatric Patients and Arthropathic Effects in Animals
- 5.13 Photosensitivity/Phototoxicity
- 5.14 Development of Drug Resistant Bacteria
- 5.15 Potential Risks With Concomitant Use of Drugs Metabolized by Cytochrome P450 1A2 Enzymes
- 5.17 Crystalluria
- 5.16 Periodic Assessment of Organ System Functions

**6 ADVERSE REACTIONS**

- 6.1 Clinical Trials Experience
- 6.2 Postmarketing Experience
- 6.3 Adverse Laboratory Changes

**7 DRUG INTERACTIONS**

**8 USE IN SPECIFIC POPULATIONS**

- 8.1 Pregnancy
- 8.3 Nursing Mothers
- 8.4 Pediatric Use
- 8.5 Geriatric Use
- 8.6 Renal Impairment
- 8.7 Hepatic Impairment

**10 OVERDOSAGE**

**11 DESCRIPTION**

**12 CLINICAL PHARMACOLOGY**

- 12.1 Mechanism of Action
- 12.3 Pharmacokinetics
- 12.4 Microbiology

**13 NONCLINICAL TOXICOLOGY**

- 13.1 Carcinogenesis, Mutagenesis, Impairment of Fertility
- 13.2 Animal Toxicology and/or Pharmacology

**14 CLINICAL STUDIES**

- 14.1 Empirical Therapy In Adult Febrile Neutropenic Patients
- 14.2 Complicated Urinary Tract Infection and Pyelonephritis—Efficacy in Pediatric Patients
- 14.3 Inhalational Anthrax in Adults and Pediatrics
- 14.4 Plague

**15 REFERENCES**

**16 HOW SUPPLIED/STORAGE AND HANDLING**

**17 PATIENT COUNSELING INFORMATION**

---

\*Sections or subsections omitted from the full prescribing information are not listed.

## FULL PRESCRIBING INFORMATION

### **WARNING: SERIOUS ADVERSE REACTIONS INCLUDING TENDINITIS, TENDON RUPTURE, PERIPHERAL NEUROPATHY, CENTRAL NERVOUS SYSTEM EFFECTS AND EXACERBATION OF MYASTHENIA GRAVIS**

- Fluoroquinolones, including CIPRO IV<sup>®</sup>, have been associated with disabling and potentially irreversible serious adverse reactions that have occurred together [see *Warnings and Precautions (5.1)*] including:

- Tendinitis and tendon rupture [see *Warnings and Precautions (5.2)*]
- Peripheral neuropathy [see *Warnings and Precautions (5.3)*]
- Central nervous system effects [see *Warnings and Precautions (5.4)*]

Discontinue CIPRO immediately and avoid the use of fluoroquinolones, including CIPRO, in patients who experience any of these serious adverse reactions [see *Warnings and Precautions (5.1)*].

- Fluoroquinolones, including CIPRO IV, may exacerbate muscle weakness in patients with myasthenia gravis. Avoid CIPRO IV in patients with known history of myasthenia gravis [see *Warnings and Precautions (5.5)*].
- Because fluoroquinolones, including CIPRO, have been associated with serious adverse reactions [see *Warnings and Precautions (5.1–5.15)*], reserve CIPRO for use in patients who have no alternative treatment options for the following indications:
  - Acute exacerbation of chronic bronchitis [see *Indications and Usage (1.9)*]
  - Acute Sinusitis [see *Indications and Usage (1.11)*]

## 1 INDICATIONS AND USAGE

### 1.1 Skin and Skin Structure Infections

CIPRO IV is indicated in adult patients for treatment of skin and skin structure infections caused by *Escherichia coli*, *Klebsiella pneumoniae*, *Enterobacter cloacae*, *Proteus mirabilis*, *Proteus vulgaris*, *Providencia stuartii*, *Morganella morganii*, *Citrobacter freundii*, *Pseudomonas aeruginosa*, methicillin-susceptible *Staphylococcus aureus*, methicillin-susceptible *Staphylococcus epidermidis*, or *Streptococcus pyogenes*.

### 1.2 Bone and Joint Infections

CIPRO IV is indicated in adult patients for treatment of bone and joint infections caused by *Enterobacter cloacae*, *Serratia marcescens*, or *Pseudomonas aeruginosa*.

### 1.3 Complicated Intra-Abdominal Infections

CIPRO IV is indicated in adult patients for treatment of complicated intra-abdominal infections (used in combination with metronidazole) caused by *Escherichia coli*, *Pseudomonas aeruginosa*, *Proteus mirabilis*, *Klebsiella pneumoniae*, or *Bacteroides fragilis*.

### 1.4 Nosocomial Pneumonia

CIPRO IV is indicated in adult patients for treatment of nosocomial pneumonia caused by *Haemophilus influenzae* or *Klebsiella pneumoniae*.

## 1.5 Empirical Therapy for Febrile Neutropenic Patients

CIPRO IV is indicated in adult patients for the treatment of febrile neutropenia in combination with piperacillin sodium [see *Clinical Studies* ([14.1](#))].

## 1.6 Inhalational Anthrax (Post-Exposure)

CIPRO IV is indicated in adults and pediatric patients from birth to 17 years of age for treatment of inhalational anthrax (post-exposure) to reduce the incidence or progression of disease following exposure to aerosolized *Bacillus anthracis*.

Ciprofloxacin serum concentrations achieved in humans served as a surrogate endpoint reasonably likely to predict clinical benefit and provided the initial basis for approval of this indication.<sup>1</sup> Supportive clinical information for ciprofloxacin for anthrax post-exposure prophylaxis was obtained during the anthrax bioterror attacks of October 2001 [see *Clinical Studies* ([14.3](#))].

## 1.7 Plague

CIPRO IV is indicated for treatment of plague, including pneumonic and septicemic plague, due to *Yersinia pestis* (*Y. pestis*) and prophylaxis for plague in adults and pediatric patients from birth to 17 years of age. Efficacy studies of ciprofloxacin could not be conducted in humans with plague for feasibility reasons. Therefore this indication is based on an efficacy study conducted in animals only [see *Clinical Studies* ([14.4](#))].

## 1.8 Chronic Bacterial Prostatitis

CIPRO IV is indicated in adult patients for treatment of chronic bacterial prostatitis caused by *Escherichia coli* or *Proteus mirabilis*.

## 1.9 Lower Respiratory Tract Infections

CIPRO IV is indicated in adult patients for treatment of lower respiratory tract infections caused by *Escherichia coli*, *Klebsiella pneumoniae*, *Enterobacter cloacae*, *Proteus mirabilis*, *Pseudomonas aeruginosa*, *Haemophilus influenzae*, *Haemophilus parainfluenzae*, or *Streptococcus pneumoniae*. CIPRO IV is not a drug of first choice in the treatment of presumed or confirmed pneumonia secondary to *Streptococcus pneumoniae*.

CIPRO IV is indicated for the treatment of acute exacerbations of chronic bronchitis (AECB) caused by *Moraxella catarrhalis*.

Because fluoroquinolones, including CIPRO IV, have been associated with serious adverse reactions [see *Warnings and Precautions* ([5.1-5.15](#))] and for some patients AECB is self-limiting, reserve CIPRO IV for treatment of AECB in patients who have no alternative treatment options.

## 1.10 Urinary Tract Infections

### *Urinary Tract Infection in Adults*

CIPRO IV is indicated in adult patients for treatment of urinary tract infections caused by *Escherichia coli*, *Klebsiella pneumoniae*, *Enterobacter cloacae*, *Serratia marcescens*, *Proteus mirabilis*, *Providencia rettgeri*, *Morganella morganii*, *Citrobacter koseri*, *Citrobacter freundii*, *Pseudomonas aeruginosa*, methicillin-susceptible *Staphylococcus epidermidis*, *Staphylococcus saprophyticus*, or *Enterococcus faecalis*.

### *Complicated Urinary Tract Infections and Pyelonephritis in Pediatric Patients*

CIPRO IV is indicated in pediatric patients one to 17 years of age for treatment of complicated urinary tract infections (cUTI) and pyelonephritis due to *Escherichia coli* [see *Use in Specific Populations* ([8.4](#))].

Although effective in clinical trials, CIPRO IV is not a drug of first choice in the pediatric population due to an increased incidence of adverse reactions compared to controls, including reactions related to joints and/or surrounding tissues. CIPRO IV, like other fluoroquinolones, is associated with arthropathy and histopathological changes in weight-bearing joints of juvenile animals [see *Warnings and Precautions* ([5.12](#)), *Adverse Reactions* ([6.1](#)), *Use in Specific Populations* ([8.4](#)), and *Nonclinical Toxicology* ([13.2](#))].

## 1.11 Acute Sinusitis

CIPRO IV is indicated in adult patients for treatment of acute sinusitis caused by *Haemophilus influenzae*, *Streptococcus pneumoniae*, or *Moraxella catarrhalis*.

Because fluoroquinolones, including CIPRO IV, have been associated with serious adverse reactions [see *Warnings and Precautions* (5.1–5.15)] and for some patients acute sinusitis is self-limiting, reserve CIPRO for treatment of acute sinusitis in patients who have no alternative treatment options.

## 1.12 Usage

To reduce the development of drug-resistant bacteria and maintain the effectiveness of CIPRO IV and other antibacterial drugs, CIPRO IV should be used only to treat or prevent infections that are proven or strongly suspected to be caused by susceptible bacteria. When culture and susceptibility information are available, they should be considered in selecting or modifying antibacterial therapy. In the absence of such data, local epidemiology and susceptibility patterns may contribute to the empiric selection of therapy.

If anaerobic organisms are suspected of contributing to the infection, appropriate therapy should be administered. Appropriate culture and susceptibility tests should be performed before treatment in order to isolate and identify organisms causing infection and to determine their susceptibility to ciprofloxacin. Therapy with CIPRO IV may be initiated before results of these tests are known; once results become available appropriate therapy should be continued.

As with other drugs, some isolates of *Pseudomonas aeruginosa* may develop resistance fairly rapidly during treatment with ciprofloxacin. Culture and susceptibility testing performed periodically during therapy will provide information not only on the therapeutic effect of the antimicrobial agent but also on the possible emergence of bacterial resistance.

## 2 DOSAGE AND ADMINISTRATION

CIPRO IV should be administered intravenously at dosages described in the appropriate Dosage Guidelines tables.

### 2.1 Dosage in Adults

The determination of dosage and duration for any particular patient must take into consideration the severity and nature of the infection, the susceptibility of the causative microorganism, the integrity of the patient's host-defense mechanisms, and the status of renal and hepatic function.

**Table 1: Adult Dosage Guidelines**

Infection <sup>1</sup>	Dose	Frequency	Usual Duration
Skin and Skin Structure	400 mg	every 8 to 12 hours	7–14 days
Bone and Joint	400 mg	every 8 to 12 hours	4 to 8 weeks
Complicated Intra-Abdominal <sup>2</sup>	400 mg	every 12 hours	7–14 days
Nosocomial Pneumonia	400 mg	every 8 hours	10–14 days
Empirical Therapy In Febrile Neutropenic Patients	CIPRO IV 400 mg and	every 8 hours	7–14 days
	Piperacillin 50 mg/kg	every 4 hours	
Inhalational Anthrax(Post-Exposure) <sup>3</sup>	400 mg	every 12 hours	60 days
Plague <sup>3</sup>	400 mg	every 8 to 12 hours	14 days
Chronic Bacterial Prostatitis	400 mg	every 12 hours	28 days
Lower Respiratory Tract Infections	400 mg	every 8 to 12 hours	7–14 days
Urinary Tract Infections	200 mg to 400 mg	every 8 to 12 hours	7–14 days

Acute Sinusitis	400 mg	every 12 hours	10 days
-----------------	--------	----------------	---------

1. Due to the designated pathogens (see Indications and Usage.)
2. Used in conjunction with metronidazole.
3. Begin administration as soon as possible after suspected or confirmed exposure.

#### Conversion of Intravenous to Oral Dosing in Adults

Patients whose therapy is started with CIPRO IV may be switched to CIPRO Tablets or Oral Suspension when clinically indicated at the discretion of the physician (Table 2) [see *Clinical Pharmacology* ([12.3](#))].

**Table 2: Equivalent AUC Dosing Regimens**

CIPRO Oral Dosage	Equivalent CIPRO IV Dosage
250 mg Tablet every 12 hours	200 mg intravenous every 12 hours
500 mg Tablet every 12 hours	400 mg intravenous every 12 hours
750 mg Tablet every 12 hours	400 mg intravenous every 8 hours

## 2.2 Dosage in Pediatric Patients

Dosing and initial route of therapy (that is, IV or oral) for cUTI or pyelonephritis should be determined by the severity of the infection.

**Table 3: Pediatric Dosage Guidelines**

Infection	Dose (mg/kg)	Frequency	Total Duration
Complicated Urinary Tract or Pyelonephritis (patients from 1 to 17 years of age) <sup>1</sup>	6 mg/kg to 10 mg/kg (maximum 400 mg per dose; not to be exceeded even in patients weighing more than 51 kg)	Every 8 hours	10–21 days <sup>1</sup>
Inhalational Anthrax (Post-Exposure) <sup>2</sup>	10 mg/kg (maximum 400 mg per dose)	Every 12 hours	60 days
Plague <sup>2,3</sup>	10 mg/kg (maximum 400 mg per dose)	Every 8 to 12 hours	10–21 days

1. The total duration of therapy for cUTI and pyelonephritis in the clinical trial was determined by the physician. The mean duration of treatment was 11 days (range 10 to 21 days).
2. Begin drug administration as soon as possible after suspected or confirmed exposure.
3. Begin drug administration as soon as possible after suspected or confirmed exposure to *Y. pestis*.

## 2.3 Dosage Modifications in Patients with Renal Impairment

Ciprofloxacin is eliminated primarily by renal excretion; however, the drug is also metabolized and partially cleared through the biliary system of the liver and through the intestine. These alternative pathways of drug elimination appear to compensate for the reduced renal excretion in patients with renal impairment. Nonetheless, some modification of dosage is recommended, particularly for patients with severe renal dysfunction. Dosage guidelines for use in patients with renal impairment are shown in Table 4.

**Table 4: Recommended Starting and Maintenance Doses for Adult Patients with Impaired Renal Function**

Creatinine Clearance (mL/min)	Dose
>30	See Usual Dosage.
5–29	200–400 mg every 18–24 hours

When only the serum creatinine concentration is known, the following formulas may be used to estimate creatinine clearance:

$$\text{Men - Creatinine clearance (mL/min)} = \frac{\text{Weight (kg)} \times (140 - \text{age})}{72 \times \text{serum creatinine (mg/dL)}}$$

Women - 0.85 x the value calculated for men.

The serum creatinine should represent a steady state of renal function.

In patients with severe infections and severe renal impairment and hepatic insufficiency, careful monitoring is suggested.

Pediatric patients with moderate to severe renal insufficiency were excluded from the clinical trial of cUTI and pyelonephritis. No information is available on dosing adjustments necessary for pediatric patients with moderate to severe renal insufficiency (that is, creatinine clearance of  $< 50 \text{ mL/min/1.73m}^2$ ).

## **2.4 Preparation of CIPRO IV for Administration**

### *Flexible Containers*

CIPRO IV is available as a 0.2% premixed solution in 5% dextrose in flexible containers of 200 mL. The solutions in flexible containers do not need to be diluted and may be infused as described above.

## **2.5 Important Administration Instructions**

### *Intravenous Infusion*

CIPRO IV should be administered by intravenous infusion over a period of 60 minutes. Slow infusion of a dilute solution into a larger vein will minimize patient discomfort and reduce the risk of venous irritation.

### *Hydration of Patients Receiving CIPRO IV*

Adequate hydration of patients receiving CIPRO IV should be maintained to prevent the formation of highly concentrated urine. Crystalluria has been reported with quinolones [see *Warnings and Precautions* ([5.16](#)), *Adverse Reactions* ([6.1](#)), *Nonclinical Toxicology* ([13.2](#)) and *Patient Counseling Information* ([17](#))].

## **3 DOSAGE FORMS AND STRENGTHS**

Injection: (200 mL in 5% Dextrose, 400 mg, 0.2%) Premix in Flexible Containers, for intravenous infusion.

## **4 CONTRAINDICATIONS**

### **4.1 Hypersensitivity**

Ciprofloxacin is contraindicated in persons with a history of hypersensitivity to ciprofloxacin, any member of the quinolone class of antibacterials, or any of the product components [see *Warnings and Precautions* ([5.7](#))].

### **4.2 Tizanidine**

Concomitant administration with tizanidine is contraindicated [see *Drug Interactions* ([7](#))].

## **5 WARNINGS AND PRECAUTIONS**

### **5.1 Disabling and Potentially Irreversible Serious Adverse Reactions Including Tendinitis and Tendon Rupture, Peripheral Neuropathy, and Central Nervous System Effects**

Fluoroquinolones, including CIPRO IV, have been associated with disabling and potentially irreversible serious adverse reactions from different body systems that can occur together in the same patient. Commonly seen adverse reactions include tendinitis, tendon rupture, arthralgia, myalgia, peripheral neuropathy, and central nervous system effects (hallucinations, anxiety, depression, insomnia, severe headaches, and confusion). These reactions can occur within hours to weeks after starting CIPRO IV. Patients of any age or without pre-existing risk factors have experienced these adverse reactions [see *Warnings and Precautions* ([5.2](#), [5.3](#), [5.4](#))].

Discontinue CIPRO IV immediately at the first signs or symptoms of any serious adverse reaction. In addition, avoid the use of fluoroquinolones, including CIPRO IV, in patients who have experienced any of these serious adverse reactions associated with fluoroquinolones.

## 5.2 Tendinitis and Tendon Rupture

Fluoroquinolones, including CIPRO IV, have been associated with an increased risk of tendinitis and tendon rupture in all ages [see *Warnings and Precautions* (5.1) and *Adverse Reactions* (6.2)]. This adverse reaction most frequently involves the Achilles tendon, and has also been reported with the rotator cuff (the shoulder), the hand, the biceps, the thumb, and other tendons. Tendinitis or tendon rupture can occur, within hours or days of starting CIPRO IV, or as long as several months after completion of fluoroquinolone therapy. Tendinitis and tendon rupture can occur bilaterally.

The risk of developing fluoroquinolone-associated tendinitis and tendon rupture is increased in patients over 60 years of age, in patients taking corticosteroid drugs, and in patients with kidney, heart or lung transplants. Other factors, that may independently increase the risk of tendon rupture include strenuous physical activity, renal failure, and previous tendon disorders such as rheumatoid arthritis. Tendinitis and tendon rupture have also occurred in patients taking fluoroquinolones who do not have the above risk factors. Discontinue CIPRO IV immediately if the patient experiences pain, swelling, inflammation or rupture of a tendon. Avoid fluoroquinolones, including CIPRO IV, in patients who have a history of tendon disorders or have experienced tendinitis or tendon rupture [see *Adverse Reactions* (6.2)].

## 5.3 Peripheral Neuropathy

Fluoroquinolones, including CIPRO IV, have been associated with an increased risk of peripheral neuropathy. Cases of sensory or sensorimotor axonal polyneuropathy affecting small and/or large axons resulting in paresthesias, hypoesthesias, dysesthesias and weakness have been reported in patients receiving fluoroquinolones, including CIPRO IV. Symptoms may occur soon after initiation of CIPRO IV and may be irreversible in some patients [see *Warnings and Precautions* (5.1) and *Adverse Reactions* (6.1, 6.2)].

Discontinue CIPRO IV immediately if the patient experiences symptoms of peripheral neuropathy including pain, burning, tingling, numbness, and/or weakness, or other alterations in sensations including light touch, pain, temperature, position sense and vibratory sensation, and/or motor strength in order to minimize the development of an irreversible condition. Avoid fluoroquinolones, including CIPRO IV, in patients who have previously experienced peripheral neuropathy [see *Adverse Reactions* (6.1, 6.2).]

## 5.4 Central Nervous System Effects

Fluoroquinolones, including CIPRO IV, have been associated with an increased risk of central nervous system (CNS) effects, including convulsions, increased intracranial pressure (including pseudotumor cerebri), and toxic psychosis. CIPRO IV may also cause central nervous system (CNS) events including: nervousness, agitation, insomnia, anxiety, nightmares, paranoia, dizziness, confusion, tremors, hallucinations, depression, and, psychotic reactions have progressed to suicidal ideations/thoughts and self-injurious behavior such as attempted or completed suicide. These reactions may occur following the first dose. Advise patients receiving CIPRO IV to inform their healthcare provider immediately if these reactions occur, discontinue the drug, and institute appropriate care. CIPRO IV, like other fluoroquinolones, is known to trigger seizures or lower the seizure threshold. As with all fluoroquinolones, use CIPRO IV with caution in epileptic patients and patients with known or suspected CNS disorders that may predispose to seizures or lower the seizure threshold (for example, severe cerebral arteriosclerosis, previous history of convulsion, reduced cerebral blood flow, altered brain structure, or stroke), or in the presence of other risk factors that may predispose to seizures or lower the seizure threshold (for example, certain drug therapy, renal dysfunction). Use CIPRO IV when the benefits of treatment exceed the risks, since these patients are endangered because of possible undesirable CNS side effects. Cases of status epilepticus have been reported. If seizures occur, discontinue CIPRO IV [see *Adverse Reactions* (6.1) and *Drug Interactions* (7)].

## 5.5 Exacerbation of Myasthenia Gravis

Fluoroquinolones, including CIPRO IV, have neuromuscular blocking activity and may exacerbate muscle weakness in patients with myasthenia gravis. Postmarketing serious adverse reactions, including deaths and requirement for ventilatory support, have been associated with fluoroquinolone use in patients with myasthenia gravis. Avoid CIPRO IV in patients with known history of myasthenia gravis [see *Adverse Reactions* (6.2)].

## 5.6 Other Serious and Sometimes Fatal Adverse Reactions

Other serious and sometimes fatal adverse reactions, some due to hypersensitivity, and some due to uncertain etiology, have been reported in patients receiving therapy with quinolones, including CIPRO IV. These events may be severe and generally occur following the administration of multiple doses. Clinical manifestations may include one or more of the following:

- Fever, rash, or severe dermatologic reactions (for example, toxic epidermal necrolysis, Stevens-Johnson syndrome);
- Vasculitis; arthralgia; myalgia; serum sickness;
- Allergic pneumonitis;
- Interstitial nephritis; acute renal insufficiency or failure;
- Hepatitis; jaundice; acute hepatic necrosis or failure;
- Anemia, including hemolytic and aplastic; thrombocytopenia, including thrombotic thrombocytopenic purpura; leukopenia; agranulocytosis; pancytopenia; and/or other hematologic abnormalities.

Discontinue CIPRO IV immediately at the first appearance of a skin rash, jaundice, or any other sign of hypersensitivity and supportive measures instituted [*see Adverse Reactions (6.1, 6.2)*].

## 5.7 Hypersensitivity Reactions

Serious and occasionally fatal hypersensitivity (anaphylactic) reactions, some following the first dose, have been reported in patients receiving fluoroquinolone therapy, including CIPRO IV. Some reactions were accompanied by cardiovascular collapse, loss of consciousness, tingling, pharyngeal or facial edema, dyspnea, urticaria, and itching. Only a few patients had a history of hypersensitivity reactions. Serious anaphylactic reactions require immediate emergency treatment with epinephrine and other resuscitation measures, including oxygen, intravenous fluids, intravenous antihistamines, corticosteroids, pressor amines, and airway management, including intubation, as indicated [*see Adverse Reactions (6.1)*].

## 5.8 Hepatotoxicity

Cases of severe hepatotoxicity, including hepatic necrosis, life-threatening hepatic failure, and fatal events, have been reported with CIPRO IV. Acute liver injury is rapid in onset (range 1–39 days), and is often associated with hypersensitivity. The pattern of injury can be hepatocellular, cholestatic or mixed. Most patients with fatal outcomes were older than 55 years old. In the event of any signs and symptoms of hepatitis (such as anorexia, jaundice, dark urine, pruritus, or tender abdomen), discontinue treatment immediately.

There can be a temporary increase in transaminases, alkaline phosphatase, or cholestatic jaundice, especially in patients with previous liver damage, who are treated with CIPRO IV [*see Adverse Reactions (6.2, 6.3)*].

## 5.9 Serious Adverse Reactions with Concomitant Theophylline

Serious and fatal reactions have been reported in patients receiving concurrent administration of Intravenous CIPRO and theophylline. These reactions have included cardiac arrest, seizure, status epilepticus, and respiratory failure. Instances of nausea, vomiting, tremor, irritability, or palpitation have also occurred.

Although similar serious adverse reactions have been reported in patients receiving theophylline alone, the possibility that these reactions may be potentiated by CIPRO cannot be eliminated. If concomitant use cannot be avoided, monitor serum levels of theophylline and adjust dosage as appropriate [*see Drug Interactions (7)*].

## 5.10 *Clostridium difficile*-Associated Diarrhea

*Clostridium difficile* (*C. difficile*)-associated diarrhea (CDAD) has been reported with use of nearly all antibacterial agents, including CIPRO IV, and may range in severity from mild diarrhea to fatal colitis. Treatment with antibacterial agents alters the normal flora of the colon leading to overgrowth of *C. difficile*.

*C. difficile* produces toxins A and B which contribute to the development of CDAD. Hypertoxin producing isolates of *C. difficile* cause increased morbidity and mortality, as these infections can be refractory to antimicrobial therapy and may require colectomy. CDAD must be considered in all patients who present with diarrhea following antibacterial use.

Careful medical history is necessary since CDAD has been reported to occur over two months after the administration of antibacterial agents.

If CDAD is suspected or confirmed, ongoing antibacterial use not directed against *C. difficile* may need to be discontinued. Appropriate fluid and electrolyte management, protein supplementation, antibacterial treatment of *C. difficile*, and institute surgical evaluation as clinically indicated [*see Adverse Reactions (6.1)*].

### **5.11 Prolongation of the QT Interval**

Some fluoroquinolones, including CIPRO IV, have been associated with prolongation of the QT interval on the electrocardiogram and cases of arrhythmia. Cases of torsade de pointes have been reported during postmarketing surveillance in patients receiving fluoroquinolones, including CIPRO IV. Avoid CIPRO IV in patients with known prolongation of the QT interval, risk factors for QT prolongation or torsade de pointes (for example, congenital long QT syndrome, uncorrected electrolyte imbalance, such as hypokalemia or hypomagnesemia and cardiac disease, such as heart failure, myocardial infarction, or bradycardia), and patients receiving Class IA antiarrhythmic agents (quinidine, procainamide), or Class III antiarrhythmic agents (amiodarone, sotalol), tricyclic antidepressants, macrolides, and antipsychotics. Elderly patients may also be more susceptible to drug-associated effects on the QT interval [*see Adverse Reactions (6.2) and Use in Specific Populations (8.5)*].

### **5.12 Musculoskeletal Disorders in Pediatric Patients and Arthropathic Effects in Animals**

CIPRO IV is indicated in pediatric patients (less than 18 years of age) only for cUTI, prevention of inhalational anthrax (post exposure), and plague [*see Indications and Usage (1.10, 1.6, 1.7)*]. An increased incidence of adverse reactions compared to controls, including reactions related to joints and/or surrounding tissues, has been observed [*see Adverse Reactions (6.1)*].

In pre-clinical studies, oral administration of CIPRO IV caused lameness in immature dogs. Histopathological examination of the weight-bearing joints of these dogs revealed permanent lesions of the cartilage. Related quinolone-class drugs also produce erosions of cartilage of weight-bearing joints and other signs of arthropathy in immature animals of various species [*see Use in Specific Populations (8.4) and Nonclinical Toxicology (13.2)*].

### **5.13 Photosensitivity/Phototoxicity**

Moderate to severe photosensitivity/phototoxicity reactions, the latter of which may manifest as exaggerated sunburn reactions (for example, burning, erythema, exudation, vesicles, blistering, edema) involving areas exposed to light (typically the face, “V” area of the neck, extensor surfaces of the forearms, dorsa of the hands), can be associated with the use of quinolones, including CIPRO IV, after sun or UV light exposure. Therefore, avoid excessive exposure to these sources of light. Discontinue CIPRO IV if phototoxicity occurs [*see Adverse Reactions (6.1)*].

### **5.14 Development of Drug Resistant Bacteria**

Prescribing CIPRO IV in the absence of a proven or strongly suspected bacterial infection or a prophylactic indication is unlikely to provide benefit to the patient and increases the risk of the development of drug-resistant bacteria.

### **5.15 Potential Risks with Concomitant Use of Drugs Metabolized by Cytochrome P450 1A2 Enzymes**

Ciprofloxacin is an inhibitor of the hepatic CYP1A2 enzyme pathway. Co-administration of CIPRO IV and other drugs primarily metabolized by CYP1A2 (for example, theophylline, methylxanthines, caffeine, tizanidine, ropinirole, clozapine, olanzapine, and zolpidem) results in increased plasma concentrations of the co-administered drug and could lead to clinically significant pharmacodynamic adverse reactions of the co-administered drug [*see Drug Interactions (7) and Clinical Pharmacology (12.3)*].

### **5.16 Crystalluria**

Crystals of ciprofloxacin have been observed rarely in the urine of human subjects but more frequently in the urine of laboratory animals, which is usually alkaline [*see Nonclinical Toxicology (13.2)*]. Crystalluria related to ciprofloxacin has been reported only rarely in humans because human urine is usually acidic. Avoid alkalinity of the urine in patients

receiving CIPRO IV. Hydrate patients well to prevent the formation of highly concentrated urine [see *Dosage and Administration* (2.4)].

### 5.17 Periodic Assessment of Organ System Functions

As with any potent drug, periodic assessment of organ system functions, including renal, hepatic, and hematopoietic function, is advisable during prolonged therapy.

## 6 ADVERSE REACTIONS

The following serious and otherwise important adverse drug reactions are discussed in greater detail in other sections of labeling:

- Disabling and Potentially Irreversible Serious Adverse Reactions [see *Warnings and Precautions* (5.1)]
- Tendinitis and Tendon Rupture [see *Warnings and Precautions* (5.2)]
- Peripheral Neuropathy [see *Warnings and Precautions* (5.3)]
- Central Nervous System Effects [see *Warnings and Precautions* (5.4)]
- Exacerbation of Myasthenia Gravis [see *Warnings and Precautions* (5.5)]
- Other Serious and Sometimes Fatal Adverse Reactions [see *Warnings and Precautions* (5.6)]
- Hypersensitivity Reactions [see *Warnings and Precautions* (5.7)]
- Hepatotoxicity [see *Warnings and Precautions* (5.8)]
- Serious Adverse Reactions with Concomitant Theophylline [see *Warnings and Precautions* (5.9)]
- Clostridium difficile-Associated Diarrhea [see *Warnings and Precautions* (5.10)]
- Prolongation of the QT Interval [see *Warnings and Precautions* (5.11)]
- Musculoskeletal Disorders in Pediatric Patients [see *Warnings and Precautions* (5.12)]
- Photosensitivity/Phototoxicity [see *Warnings and Precautions* (5.13)]
- Development of Drug Resistant Bacteria [see *Warnings and Precautions* (5.14)]

### 6.1 Clinical Trials Experience

Because clinical trials are conducted under widely varying conditions, adverse reaction rates observed in the clinical trials of a drug cannot be directly compared to rates in the clinical trials of another drug and may not reflect the rates observed in practice.

#### Adult Patients

During clinical investigations with oral and parenteral CIPRO IV, 49,038 patients received courses of the drug.

The most frequently reported adverse reactions, from clinical trials of all formulations, all dosages, all drug-therapy durations, and for all indications of ciprofloxacin therapy were nausea (2.5%), diarrhea (1.6%), liver function tests abnormal (1.3%), vomiting (1%), and rash (1%).

In clinical trials the following adverse reactions were reported in greater than 1% of patients treated with intravenous CIPRO IV: nausea, diarrhea, central nervous system disturbance, local intravenous site reactions, liver function tests abnormal, eosinophilia, headache, restlessness, and rash. Local intravenous site reactions are more frequent if the infusion time is 30 minutes or less. These may appear as local skin reactions that resolve rapidly upon completion of the infusion. Subsequent intravenous administration is not contraindicated unless the reactions recur or worsen.

**Table 5: Medically Important Adverse Reactions That Occurred in less than 1% Ciprofloxacin Patients**

System Organ Class	Adverse Reactions
Body as a Whole	Abdominal Pain/Discomfort Pain
Cardiovascular	Cardiopulmonary Arrest Myocardial Infarction

System Organ Class	Adverse Reactions
	Tachycardia Syncope Hypertension Angina Pectoris Vasodilation
<b>Central Nervous System</b>	Restlessness Seizures (including Status Epilepticus) Paranoia Psychosis (toxic) Depression (potentially culminating in self-injurious behavior, such as suicidal ideations/thoughts and attempted or completed suicide) Phobia Depersonalization Manic Reaction Unresponsiveness Ataxia Hallucinations Dizziness Paresthesia Tremor Insomnia Nightmares Irritability Malaise Abnormal Gait Migraine
<b>Gastrointestinal</b>	Ileus Gastrointestinal Bleeding Pancreatitis Hepatic Necrosis Intestinal Perforation Dyspepsia Constipation Oral Ulceration Mouth Dryness Anorexia Flatulence Hepatitis
<b>Hemic/Lymphatic</b>	Agranulocytosis Prolongation of Prothrombin Time Petechia
<b>Metabolic/Nutritional</b>	Hyperglycemia Hypoglycemia
<b>Musculoskeletal</b>	Arthralgia Joint Stiffness Muscle Weakness
<b>Renal/Urogenital</b>	Renal Failure Interstitial Nephritis Hemorrhagic Cystitis Renal Calculi Frequent Urination Gynecomastia

System Organ Class	Adverse Reactions
	Crystalluria Cylindruria Hematuria Albuminuria
<b>Respiratory</b>	Respiratory Arrest Dyspnea Laryngeal Edema Hemoptysis Bronchospasm
<b>Skin/Hypersensitivity</b>	Allergic Reactions Anaphylactic Reactions including life-threatening anaphylactic shock Erythema Multiforme/Stevens-Johnson Syndrome Exfoliative Dermatitis Toxic Epidermal Necrolysis Vasculitis Angioedema Extremities Purpura Fever Pruritus Urticaria Increased Perspiration Erythema Nodosum Thrombophlebitis Burning Photosensitivity/Phototoxicity Reaction
<b>Special Senses</b>	Decreased Visual Acuity Blurred Vision Disturbed Vision (diplopia, chromatopsia, and photopsia) Anosmia Hearing Loss Tinnitus Nystagmus Bad Taste

In several instances, nausea, vomiting, tremor, irritability, or palpitation were judged by investigators to be related to elevated serum levels of theophylline possibly as a result of drug interaction with ciprofloxacin.

In randomized, double-blind controlled clinical trials comparing CIPRO (Intravenous and Intravenous/Oral sequential) with intravenous beta-lactam control antibiotics, the CNS adverse reaction profile of CIPRO was comparable to that of the control drugs.

#### *Pediatric Patients*

Short (6 weeks) and long term (1 year) musculoskeletal and neurological safety of oral/intravenous ciprofloxacin was compared to a cephalosporin for treatment of cUTI or pyelonephritis in pediatric patients 1 to 17 years of age (mean age of 6 ± 4 years) in an international multicenter trial. The duration of therapy was 10 to 21 days (mean duration of treatment was 11 days with a range of 1 to 88 days). A total of 335 ciprofloxacin- and 349 comparator-treated patients were enrolled.

An Independent Pediatric Safety Committee (IPSC) reviewed all cases of musculoskeletal adverse reactions including abnormal gait or abnormal joint exam (baseline or treatment-emergent). Within 6 weeks of treatment initiation, the rates of musculoskeletal adverse reactions were 9.3% (31/335) in the ciprofloxacin-treated group versus 6% (21/349) in

comparator-treated patients. All musculoskeletal adverse reactions occurring by 6 weeks resolved (clinical resolution of signs and symptoms), usually within 30 days of end of treatment. Radiological evaluations were not routinely used to confirm resolution of the adverse reactions. Ciprofloxacin-treated patients were more likely to report more than one adverse reaction and on more than one occasion compared to control patients. The rate of musculoskeletal adverse reactions was consistently higher in the ciprofloxacin group compared to the control group across all age subgroups. At the end of 1 year, the rate of these adverse reactions reported at any time during that period was 13.7% (46/335) in the ciprofloxacin-treated group versus 9.5% (33/349) in the comparator-treated patients (Table 6).

**Table 6: Musculoskeletal Adverse Reactions<sup>1</sup> as Assessed by the IPSC**

	<b>CIPRO</b>	<b>Comparator</b>
All Patients (within 6 weeks)	31/335 (9.3%)	21/349 (6%)
95% Confidence Interval <sup>2</sup>	(-0.8%, +7.2%)	
Age Group		
12 months to 24 months	1/36 (2.8%)	0/41
2 years to <6 years	5/124 (4%)	3/118 (2.5%)
6 years to <12 years	18/143 (12.6%)	12/153 (7.8%)
12 years to 17 years	7/32 (21.9%)	6/37 (16.2 %)
All Patients (within 1 year)	46/335 (13.7%)	33/349 (9.5%)
95% Confidence Interval <sup>2</sup>	(-0.6%, + 9.1%)	

<sup>1</sup> Included: arthralgia, abnormal gait, abnormal joint exam, joint sprains, leg pain, back pain, arthrosis, bone pain, pain, myalgia, arm pain, and decreased range of motion in a joint (knee, elbow, ankle, hip, wrist, and shoulder)

<sup>2</sup> The study was designed to demonstrate that the arthropathy rate for the CIPRO group did not exceed that of the control group by more than + 6%. At both the 6 week and 1 year evaluations, the 95% confidence interval indicated that it could not be concluded that the ciprofloxacin group had findings comparable to the control group.

The incidence rates of neurological adverse reactions within 6 weeks of treatment initiation were 3% (9/335) in the ciprofloxacin group versus 2% (7/349) in the comparator group and included dizziness, nervousness, insomnia, and somnolence.

In this trial, the overall incidence rates of adverse reactions within 6 weeks of treatment initiation were 41% (138/335) in the ciprofloxacin group versus 31% (109/349) in the comparator group. The most frequent adverse reactions were gastrointestinal: 15% (50/335) of ciprofloxacin patients compared to 9% (31/349) of comparator patients. Serious adverse reactions were seen in 7.5% (25/335) of ciprofloxacin-treated patients compared to 5.7% (20/349) of control patients. Discontinuation of drug due to an adverse reaction was observed in 3% (10/335) of ciprofloxacin-treated patients versus 1.4% (5/349) of comparator patients. Other adverse events that occurred in at least 1% of ciprofloxacin patients were diarrhea 4.8%, vomiting 4.8%, abdominal pain 3.3%, dyspepsia 2.7%, nausea 2.7%, fever 2.1%, asthma 1.8% and rash 1.8%.

Short-term safety data for ciprofloxacin was also collected in a randomized, double-blind clinical trial for the treatment of acute pulmonary exacerbations in cystic fibrosis patients (ages 5–17 years). Sixty seven patients received CIPRO IV 10 mg/kg/dose every 8 hours for one week followed by CIPRO tablets 20 mg/kg/dose every 12 hours to complete 10–21 days treatment and 62 patients received the combination of ceftazidime intravenous 50 mg/kg/dose every 8 hours and tobramycin intravenous 3 mg/kg/dose every 8 hours for a total of 10–21 days. Periodic musculoskeletal assessments were conducted by treatment-blinded examiners. Patients were followed for an average of 23 days after completing treatment (range 0–93 days). Musculoskeletal adverse reactions were reported in 22% of the patients in the ciprofloxacin group and 21% in the comparison group. Decreased range of motion was reported in 12% of the subjects in the ciprofloxacin group and 16% in the comparison group. Arthralgia was reported in 10% of the patients in the ciprofloxacin group and 11% in

the comparison group. Other adverse reactions were similar in nature and frequency between treatment arms. The efficacy of CIPRO for the treatment of acute pulmonary exacerbations in pediatric cystic fibrosis patients has not been established.

In addition to the adverse reactions reported in pediatric patients in clinical trials, it should be expected that adverse reactions reported in adults during clinical trials or postmarketing experience may also occur in pediatric patients.

## 6.2 Postmarketing Experience

The following adverse reactions have been reported from worldwide marketing experience with fluoroquinolones, including CIPRO IV. Because these reactions are reported voluntarily from a population of uncertain size, it is not always possible to reliably estimate their frequency or establish a causal relationship to drug exposure (Table 7).

**Table 7: Postmarketing Reports of Adverse Drug Reactions**

<b>System Organ Class</b>	<b>Adverse Reactions</b>
<b>Cardiovascular</b>	QT prolongation Torsade de Pointes Vasculitis and ventricular arrhythmia
<b>Central Nervous System</b>	Hypertonia Myasthenia Exacerbation of myasthenia gravis Peripheral neuropathy Polyneuropathy Twitching
<b>Gastrointestinal</b>	Pseudomembranous colitis
<b>Hemic/Lymphatic</b>	Pancytopenia (life threatening or fatal outcome) Methemoglobinemia
<b>Hepatobiliary</b>	Hepatic failure (including fatal cases)
<b>Infections and Infestations</b>	Candidiasis (oral, gastrointestinal, vaginal)
<b>Investigations</b>	Prothrombin time prolongation or decrease Cholesterol elevation (serum) Potassium elevation (serum)
<b>Musculoskeletal</b>	Myalgia Myoclonus Tendinitis Tendon rupture
<b>Psychiatric Disorders</b>	Agitation Confusion Delirium
<b>Skin/Hypersensitivity</b>	Acute generalize exanthematous pustulosis (AGEP) Fixed eruption Serum sickness-like reaction
<b>Special Senses</b>	Anosmia Hyperesthesia Hypesthesia Nystagmus Taste loss

## 6.3 Adverse Laboratory Changes

Changes in laboratory parameters while on CIPRO IV therapy are listed below:

- Hepatic-Elevations of AST (SGOT), ALT (SGPT), alkaline phosphatase, LDH, and serum bilirubin
- Hematologic-Elevated eosinophil and platelet counts, decreased platelet counts, hemoglobin and/or hematocrit
- Renal-Elevations of serum creatinine, BUN, and uric acid

- Other elevations of serum creatine phosphokinase, serum theophylline (in patients receiving theophylline concomitantly), blood glucose, and triglycerides

Other changes occurring were: decreased leukocyte count, elevated atypical lymphocyte count, immature WBCs, elevated serum calcium, elevation of serum gamma-glutamyl transpeptidase (gGT), decreased BUN, decreased uric acid, decreased total serum protein, decreased serum albumin, decreased serum potassium, elevated serum potassium, elevated serum cholesterol. Other changes occurring during administration of ciprofloxacin were: elevation of serum amylase, decrease of blood glucose, pancytopenia, leukocytosis, elevated sedimentation rate, change in serum phenytoin, decreased prothrombin time, hemolytic anemia, and bleeding diathesis.

## 7 DRUG INTERACTIONS

Ciprofloxacin is an inhibitor of human cytochrome P450 1A2 (CYP1A2) mediated metabolism. Co-administration of CIPRO IV with other drugs primarily metabolized by CYP1A2 results in increased plasma concentrations of these drugs and could lead to clinically significant adverse events of the co-administered drug.

**Table 8: Drugs That are Affected by and Affecting CIPRO IV**

<b>Drugs That are Affected by CIPRO IV</b>		
<b>Drug(s)</b>	<b>Recommendation</b>	<b>Comments</b>
Tizanidine	Contraindicated	Concomitant administration of tizanidine and CIPRO IV is contraindicated due to the potentiation of hypotensive and sedative effects of tizanidine [ <i>see Contraindications (4.2)</i> ]
Theophylline	Avoid Use (Plasma Exposure Likely to be Increased and Prolonged)	Concurrent administration of CIPRO IV with theophylline may result in increased risk of a patient developing central nervous system (CNS) or other adverse reactions. If concomitant use cannot be avoided, monitor serum levels of theophylline and adjust dosage as appropriate [ <i>see Warnings and Precautions (5.9)</i> ].
Drugs Known to Prolong QT Interval	Avoid Use	CIPRO IV may further prolong the QT interval in patients receiving drugs known to prolong the QT interval (for example, class IA or III antiarrhythmics, tricyclic antidepressants, macrolides, antipsychotics) [ <i>see Warnings and Precautions (5.11) and Use in Specific Populations (8.5)</i> ].
Oral antidiabetic drugs	Use with caution Glucose-lowering effect potentiated	Hypoglycemia sometimes severe has been reported when CIPRO IV and oral antidiabetic agents, mainly sulfonylureas (for example, glyburide, glimepiride), were co-administered, presumably by intensifying the action of the oral antidiabetic agent. Fatalities have been reported. Monitor blood glucose when ciprofloxacin is co-administered with oral antidiabetic drugs [ <i>see Adverse Reactions (6.1)</i> ].
Phenytoin	Use with caution Altered serum levels of phenytoin (increased and decreased)	To avoid the loss of seizure control associated with decreased phenytoin levels and to prevent phenytoin overdose-related adverse reactions upon CIPRO IV discontinuation in patients receiving both agents, monitor phenytoin therapy, including phenytoin serum concentration during and shortly after co-administration of CIPRO IV with phenytoin.
Cyclosporine	Use with caution (transient elevations in serum creatinine)	Monitor renal function (in particular serum creatinine) when ciprofloxacin is co-administered with cyclosporine.

**Drugs That are Affected by CIPRO IV**

<b>Drug(s)</b>	<b>Recommendation</b>	<b>Comments</b>
Anti-coagulant drugs	Use with caution (Increase in anticoagulant effect)	The risk may vary with the underlying infection, age and general status of the patient so that the contribution of CIPRO IV to the increase in INR (international normalized ratio) is difficult to assess. Monitor prothrombin time and INR frequently during and shortly after co-administration of CIPRO IV with an oral anti-coagulant (for example, warfarin).
Methotrexate	Use with caution Inhibition of methotrexate renal tubular transport potentially leading to increased methotrexate plasma levels	Potential increase in the risk of methotrexate associated toxic reactions. Therefore, carefully monitor patients under methotrexate therapy when concomitant CIPRO IV therapy is indicated.
Ropinirole	Use with caution	Monitoring for ropinirole-related adverse reactions and appropriate dose adjustment of ropinirole is recommended during and shortly after co-administration with CIPRO IV [ <i>see Warnings and Precautions (5.15)</i> ].
Clozapine	Use with caution	Careful monitoring of clozapine associated adverse reactions and appropriate adjustment of clozapine dosage during and shortly after co-administration with CIPRO IV are advised.
NSAIDs	Use with caution	Non-steroidal anti-inflammatory drugs (but not acetyl salicylic acid) in combination of very high doses of quinolones have been shown to provoke convulsions in pre-clinical studies and in postmarketing.
Sildenafil	Use with caution Two-fold increase in exposure	Monitor for sildenafil toxicity [ <i>see Clinical Pharmacology (12.3)</i> ].
Duloxetine	Avoid Use Five-fold increase in duloxetine exposure	If unavoidable, monitor for duloxetine toxicity
Caffeine/Xanthine Derivatives	Use with caution Reduced clearance resulting in elevated levels and prolongation of serum half-life	CIPRO IV inhibits the formation of paraxanthine after caffeine administration (or pentoxifylline containing products). Monitor for xanthine toxicity and adjust dose as necessary.
Zolpidem	Avoid Use	Co-administration with ciprofloxacin may increase blood levels of zolpidem, concurrent use is not recommended
<b>Drug(s) Affecting Pharmacokinetics of CIPRO</b>		
Probenecid	Use with caution (interferes with renal tubular secretion of CIPRO and increases CIPRO serum levels)	Potential of CIPRO IV toxicity may occur.

## 8 USE IN SPECIFIC POPULATIONS

### 8.1 Pregnancy

#### *Pregnancy Category C*

There are no adequate and well-controlled studies in pregnant women. CIPRO IV should not be used during pregnancy unless the potential benefit justifies the potential risk to both fetus and mother. An expert review of published data on experiences with ciprofloxacin use during pregnancy by TERIS—the Teratogen Information System—concluded that

therapeutic doses during pregnancy are unlikely to pose a substantial teratogenic risk (quantity and quality of data=fair), but the data are insufficient to state that there is no risk.<sup>2</sup>

A controlled prospective observational study followed 200 women exposed to fluoroquinolones (52.5% exposed to ciprofloxacin and 68% first trimester exposures) during gestation.<sup>3</sup> In utero exposure to fluoroquinolones during embryogenesis was not associated with increased risk of major malformations. The reported rates of major congenital malformations were 2.2% for the fluoroquinolone group and 2.6% for the control group (background incidence of major malformations is 1–5%). Rates of spontaneous abortions, prematurity and low birth weight did not differ between the groups and there were no clinically significant musculoskeletal dysfunctions up to one year of age in the ciprofloxacin exposed children.

Another prospective follow-up study reported on 549 pregnancies with fluoroquinolone exposure (93% first trimester exposures).<sup>4</sup> There were 70 ciprofloxacin exposures, all within the first trimester. The malformation rates among live-born babies exposed to ciprofloxacin and to fluoroquinolones overall were both within background incidence ranges. No specific patterns of congenital abnormalities were found. The study did not reveal any clear adverse reactions due to in utero exposure to ciprofloxacin.

No differences in the rates of prematurity, spontaneous abortions, or birth weight were seen in women exposed to ciprofloxacin during pregnancy.<sup>2,3</sup> However, these small postmarketing epidemiology studies, of which most experience is from short term, first trimester exposure, are insufficient to evaluate the risk for less common defects or to permit reliable and definitive conclusions regarding the safety of ciprofloxacin in pregnant women and their developing fetuses.

Reproduction studies have been performed in rats and mice using oral doses up to 100 mg/kg (0.6 and 0.3 times the maximum daily human dose based upon body surface area, respectively) and have revealed no evidence of harm to the fetus due to ciprofloxacin. In rabbits, oral ciprofloxacin dose levels of 30 and 100 mg/kg (approximately 0.4- and 1.3-times the highest recommended therapeutic dose based upon body surface area) produced gastrointestinal toxicity resulting in maternal weight loss and an increased incidence of abortion, but no teratogenicity was observed at either dose level. After intravenous administration of doses up to 20 mg/kg (approximately 0.3-times the highest recommended therapeutic dose based upon body surface area), no maternal toxicity was produced and no embryotoxicity or teratogenicity was observed.

### **8.3 Nursing Mothers**

Ciprofloxacin is excreted in human milk. The amount of ciprofloxacin absorbed by the nursing infant is unknown. Because of the potential risk of serious adverse reactions (including articular damage) in infants nursing from mothers taking CIPRO IV, a decision should be made whether to discontinue nursing or to discontinue the drug, taking into account the importance of the drug to the mother.

### **8.4 Pediatric Use**

Although effective in clinical trials, CIPRO IV is not a drug of first choice in the pediatric population due to an increased incidence of adverse reactions compared to controls. Quinolones, including CIPRO IV, cause arthropathy (arthralgia, arthritis), in juvenile animals [see *Warnings and Precautions* ([5.12](#)) and *Nonclinical Toxicology* ([13.2](#))].

#### *Complicated Urinary Tract Infection and Pyelonephritis*

CIPRO IV is indicated for the treatment of cUTI and pyelonephritis due to *Escherichia coli* in pediatric patients 1 to 17 years of age. Although effective in clinical trials, CIPRO IV is not a drug of first choice in the pediatric population due to an increased incidence of adverse reactions compared to the controls, including events related to joints and/or surrounding tissues [see *Adverse Reactions* ([6.1](#)) and *Clinical Studies* ([14.2](#))].

#### *Inhalational Anthrax (Post-Exposure)*

CIPRO IV is indicated in pediatric patients from birth to 17 years of age for inhalational anthrax (post-exposure). The risk-benefit assessment indicates that administration of ciprofloxacin to pediatric patients is appropriate [see *Dosage and Administration* ([2.2](#)) and *Clinical Studies* ([14.3](#))].

## Plague

CIPRO IV is indicated in pediatric patients from birth to 17 years of age, for treatment of plague, including pneumonic and septicemic plague due to *Yersinia pestis* (*Y. pestis*) and prophylaxis for plague. Efficacy studies of CIPRO IV could not be conducted in humans with pneumonic plague for feasibility reasons. Therefore, approval of this indication was based on an efficacy study conducted in animals. The risk-benefit assessment indicates that administration of CIPRO to pediatric patients is appropriate [see *Indications and Usage* (1.7), *Dosage and Administration* (2.2), and *Clinical Studies* (14.4)].

## 8.5 Geriatric Use

Geriatric patients are at increased risk for developing severe tendon disorders including tendon rupture when being treated with a fluoroquinolone such as CIPRO IV. This risk is further increased in patients receiving concomitant corticosteroid therapy. Tendinitis or tendon rupture can involve the Achilles, hand, shoulder, or other tendon sites and can occur during or after completion of therapy; cases occurring up to several months after fluoroquinolone treatment have been reported. Caution should be used when prescribing CIPRO IV to elderly patients especially those on corticosteroids. Patients should be informed of this potential adverse reaction and advised to discontinue CIPRO and contact their healthcare provider if any symptoms of tendinitis or tendon rupture occur [see *Boxed Warning, Warnings and Precautions* (5.2), and *Adverse Reactions* (6.2)].

In a retrospective analysis of 23 multiple-dose controlled clinical trials of CIPRO encompassing over 3500 ciprofloxacin-treated patients, 25% of patients were greater than or equal to 65 years of age and 10% were greater than or equal to 75 years of age. No overall differences in safety or effectiveness were observed between these subjects and younger subjects, and other reported clinical experience has not identified differences in responses between the elderly and younger patients, but greater sensitivity of some older individuals on any drug therapy cannot be ruled out. Ciprofloxacin is known to be substantially excreted by the kidney, and the risk of adverse reactions may be greater in patients with impaired renal function. No alteration of dosage is necessary for patients greater than 65 years of age with normal renal function. However, since some older individuals experience reduced renal function by virtue of their advanced age, care should be taken in dose selection for elderly patients, and renal function monitoring may be useful in these patients [see *Dosage and Administration* (2.3) and *Clinical Pharmacology* (12.3)].

In general, elderly patients may be more susceptible to drug-associated effects on the QT interval. Therefore, precaution should be taken when using CIPRO IV with concomitant drugs that can result in prolongation of the QT interval (for example, class IA or class III antiarrhythmics) or in patients with risk factors for torsade de pointes (for example, known QT prolongation, uncorrected hypokalemia) [see *Warnings and Precautions* (5.11)].

## 8.6 Renal Impairment

Ciprofloxacin is eliminated primarily by renal excretion; however, the drug is also metabolized and partially cleared through the biliary system of the liver and through the intestine. These alternative pathways of drug elimination appear to compensate for the reduced renal excretion in patients with renal impairment. Nonetheless, some modification of dosage is recommended, particularly for patients with severe renal dysfunction [see *Dosage and Administration* (2.3) and *Clinical Pharmacology* (12.3)].

## 8.7 Hepatic Impairment

In preliminary studies in patients with stable chronic liver cirrhosis, no significant changes in ciprofloxacin pharmacokinetics have been observed. The pharmacokinetics of ciprofloxacin in patients with acute hepatic insufficiency, have not been studied.

## 10 OVERDOSAGE

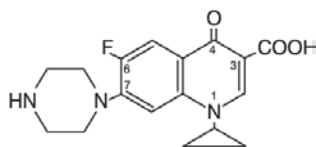
In the event of acute overdosage, reversible renal toxicity has been reported in some cases. Observe the patient carefully and give supportive treatment, including monitoring of renal function, urinary pH and acidify, if required, to prevent

crystalluria. Adequate hydration must be maintained. Only a small amount of ciprofloxacin (less than 10%) is removed from the body after hemodialysis or peritoneal dialysis.

In mice, rats, rabbits and dogs, significant toxicity including tonic/clonic convulsions was observed at intravenous doses of ciprofloxacin between 125 mg/kg and 300 mg/kg.

## 11 DESCRIPTION

CIPRO IV (ciprofloxacin) is a synthetic antimicrobial agent for intravenous (IV) administration. Ciprofloxacin, a fluoroquinolone, is 1-cyclopropyl-6-fluoro-1,4-dihydro-4-oxo-7-(1-piperazinyl)-3-quinolinecarboxylic acid. Its empirical formula is  $C_{17}H_{18}FN_3O_3$  and its chemical structure is:



Ciprofloxacin is a faint to light yellow crystalline powder with a molecular weight of 331.4. It is soluble in dilute (0.1N) hydrochloric acid and is practically insoluble in water and ethanol. CIPRO IV solutions are available as sterile 0.2% ready-for-use infusion solutions in 5% Dextrose Injection. CIPRO IV contains lactic acid as a solubilizing agent and hydrochloric acid for pH adjustment. The pH range for the 0.2% ready-for-use infusion solutions is 3.5 to 4.6.

The plastic container is not made with natural rubber latex. Solutions in contact with the plastic container can leach out certain of its chemical components in very small amounts within the expiration period, for example, di(2-ethylhexyl) phthalate (DEHP), up to 5 parts per million. The suitability of the plastic has been confirmed in tests in animals according to USP biological tests for plastic containers as well as by tissue culture toxicity studies.

The glucose content for the 200 mL flexible container is 10 g.

## 12 CLINICAL PHARMACOLOGY

### 12.1 Mechanism of Action

Ciprofloxacin is a member of the fluoroquinolone class of antibacterial agents [*see Microbiology (12.4)*].

### 12.3 Pharmacokinetics

#### Absorption

Following 60-minute intravenous infusions of 200 mg and 400 mg CIPRO IV to normal volunteers, the mean maximum serum concentrations achieved were 2.1 and 4.6 mcg/mL, respectively; the concentrations at 12 hours were 0.1 and 0.2 mcg/mL, respectively (Table 9).

**Table 9: Steady-state Ciprofloxacin Serum Concentrations (mcg/mL)  
After 60-minute INTRAVENOUS Infusions every 12 hours.**

Dose	Time after starting the infusion					
	30 minutes	1 hour	3 hour	6 hour	8 hour	12 hour
200 mg	1.7	2.1	0.6	0.3	0.2	0.1
400 mg	3.7	4.6	1.3	0.7	0.5	0.2

The pharmacokinetics of ciprofloxacin are linear over the dose range of 200 mg to 400 mg administered intravenously. Comparison of the pharmacokinetic parameters following the 1st and 5th intravenous dose on an every 12 hour regimen indicates no evidence of drug accumulation.

The absolute bioavailability of oral ciprofloxacin is within a range of 70–80% with no substantial loss by first pass metabolism. An intravenous infusion of 400-mg ciprofloxacin given over 60 minutes every 12 hours has been shown to

produce an area under the serum concentration time curve (AUC) equivalent to that produced by a 500-mg oral dose given every 12 hours. An intravenous infusion of 400 mg ciprofloxacin given over 60 minutes every 8 hours has been shown to produce an AUC at steady-state equivalent to that produced by a 750-mg oral dose given every 12 hours. A 400-mg intravenous dose results in a  $C_{max}$  similar to that observed with a 750-mg oral dose. An infusion of 200 mg CIPRO given every 12 hours produces an AUC equivalent to that produced by a 250-mg oral dose given every 12 hours (Table 10).

**Table 10: Steady-state Pharmacokinetic Parameters Following Multiple Oral and Intravenous Doses**

Parameters	500 mg	400 mg	750 mg	400 mg
	every 12 hours	every 12 hours,	every 12 hours,	every 8 hours,
	orally.	intravenously	orally	intravenously
AUC (mcg•hr/mL)	13.7 <sup>1</sup>	12.7 <sup>1</sup>	31.6 <sup>2</sup>	32.9 <sup>3</sup>
$C_{max}$ (mcg/mL)	2.97	4.56	3.59	4.07

<sup>1</sup>. AUC<sub>0-12h</sub>

<sup>2</sup>. AUC<sub>24h</sub> = AUC<sub>0-12h</sub> × 2

<sup>3</sup>. AUC<sub>24h</sub> = AUC<sub>0-8h</sub> × 3

### Distribution

After intravenous administration, ciprofloxacin is widely distributed throughout the body. Tissue concentrations often exceed serum concentrations in both men and women, particularly in genital tissue including the prostate. Ciprofloxacin is present in active form in the saliva, nasal and bronchial secretions, mucosa of the sinuses, sputum, skin blister fluid, lymph, peritoneal fluid, bile, and prostatic secretions. Ciprofloxacin has also been detected in lung, skin, fat, muscle, cartilage, and bone. The drug diffuses into the cerebrospinal fluid (CSF); however, CSF concentrations are generally less than 10% of peak serum concentrations. Low levels of the drug have been detected in the aqueous and vitreous humors of the eye.

### Metabolism

After intravenous administration, three metabolites of ciprofloxacin have been identified in human urine which together account for approximately 10% of the intravenous dose. The metabolites have antimicrobial activity, but are less active than unchanged. Ciprofloxacin is an inhibitor of human cytochrome P450 1A2 (CYP1A2) mediated metabolism. Co-administration of ciprofloxacin with other drugs primarily metabolized by CYP1A2 results in increased plasma concentrations of these drugs and could lead to clinically significant adverse events of the co-administered drug [see *Contraindications* (4.2), *Warnings and Precautions* (5.9, 5.15) and *Drug Interactions* (7)].

### Excretion

The serum elimination half-life is approximately 5–6 hours and the total clearance is around 35 L/hr. After intravenous administration, approximately 50% to 70% of the dose is excreted in the urine as unchanged drug. Following a 200-mg intravenous dose, concentrations in the urine usually exceed 200 mcg/mL 0–2 hours after dosing and are generally greater than 15 mcg/mL 8–12 hours after dosing. Following a 400 mg intravenous dose, urine concentrations generally exceed 400 mcg/mL 0–2 hours after dosing and are usually greater than 30 mcg/mL 8–12 hours after dosing. The renal clearance is approximately 22 L/hr. The urinary excretion of ciprofloxacin is virtually complete by 24 hours after dosing.

Although bile concentrations of ciprofloxacin are several fold higher than serum concentrations after intravenous dosing, only a small amount of the administered dose (<less than 1%) is recovered from the bile as unchanged drug. Approximately 15% of an intravenous dose is recovered from the feces within 5 days after dosing.

### Specific Populations

#### Elderly

Pharmacokinetic studies of the oral (single dose) and intravenous (single and multiple dose) forms of ciprofloxacin indicate that plasma concentrations of ciprofloxacin are higher in elderly subjects (older than 65 years) as compared to young adults. Although the  $C_{max}$  is increased 16% to 40%, the increase in mean AUC is approximately 30%, and can be at

least partially attributed to decreased renal clearance in the elderly. Elimination half-life is only slightly (~20%) prolonged in the elderly. These differences are not considered clinically significant [*see Use in Specific Populations (8.5)*].

#### Renal Impairment

In patients with reduced renal function, the half-life of ciprofloxacin is slightly prolonged. Dosage adjustments may be required [*see Use in Specific Populations (8.6) and Dosage and Administration (2.3)*].

#### Hepatic Impairment

In preliminary studies in patients with stable chronic liver cirrhosis, no significant changes in ciprofloxacin pharmacokinetics have been observed. The kinetics of ciprofloxacin in patients with acute hepatic insufficiency, have not been fully studied.

#### Pediatrics

Following a single oral dose of 10 mg/kg CIPRO suspension to 16 children ranging in age from 4 months to 7 years, the mean  $C_{max}$  was 2.4 mcg/mL (range: 1.5 to 3.4 mcg/mL) and the mean AUC was 9.2 mcg\*hr/mL (range: 5.8 mcg\*hr/mL to 14.9 mcg\*hr/mL). There was no apparent age-dependence, and no notable increase in  $C_{max}$  or AUC upon multiple dosing (10 mg/kg three times a day). In children with severe sepsis who were given intravenous ciprofloxacin (10 mg/kg as a 1-hour infusion), the mean  $C_{max}$  was 6.1 mcg/mL (range: 4.6 mcg/mL to 8.3 mcg/mL) in 10 children less than 1 year of age; and 7.2 mcg/mL (range: 4.7 mcg/mL to 11.8 mcg/mL) in 10 children between 1 year and 5 years of age. The AUC values were 17.4 mcg\*hr/mL (range: 11.8 mcg\*hr/mL to 32.0 mcg\*hr/mL) and 16.5 mcg\*hr/mL (range: 11 mcg\*hr/mL to 23.8 mcg\*hr/mL) in the respective age groups. These values are within the range reported for adults at therapeutic doses. Based on population pharmacokinetic analysis of pediatric patients with various infections, the predicted mean half-life in children is approximately 4 hours–5 hours, and the bioavailability of the oral suspension is approximately 60%.

#### *Drug-Drug Interactions*

##### Metronidazole

The serum concentrations of ciprofloxacin and metronidazole were not altered when these two drugs were given concomitantly.

##### Tizanidine

In a pharmacokinetic study, systemic exposure of tizanidine (4 mg single dose) was significantly increased ( $C_{max}$  7-fold, AUC 10-fold) when the drug was given concomitantly with CIPRO (500 mg twice a day for 3 days). Concomitant administration of tizanidine and CIPRO IV is contraindicated due to the potentiation of hypotensive and sedative effects of tizanidine [*see Contraindications (4.2)*].

##### Ropinirole

In a study conducted in 12 patients with Parkinson's disease who were administered 6 mg ropinirole once daily with 500 mg CIPRO twice-daily, the mean  $C_{max}$  and mean AUC of ropinirole were increased by 60% and 84%, respectively. Monitoring for ropinirole-related adverse reactions and appropriate dose adjustment of ropinirole is recommended during and shortly after co-administration with CIPRO IV [*see Warnings and Precautions (5.15)*].

##### Clozapine

Following concomitant administration of 250 mg CIPRO with 304 mg clozapine for 7 days, serum concentrations of clozapine and N-desmethylozapine were increased by 29% and 31%, respectively. Careful monitoring of clozapine associated adverse reactions and appropriate adjustment of clozapine dosage during and shortly after co-administration with CIPRO IV are advised.

##### Sildenafil

Following concomitant administration of a single oral dose of 50 mg sildenafil with 500 mg CIPRO to healthy subjects, the mean  $C_{max}$  and mean AUC of sildenafil were both increased approximately two-fold. Use sildenafil with caution when

co-administered with CIPRO due to the expected two-fold increase in the exposure of sildenafil upon co-administration of CIPRO IV.

#### Duloxetine

In clinical studies it was demonstrated that concomitant use of duloxetine with strong inhibitors of the CYP450 1A2 isozyme such as fluvoxamine, may result in a 5-fold increase in mean AUC and a 2.5-fold increase in mean C<sub>max</sub> of duloxetine.

#### Lidocaine

In a study conducted in 9 healthy volunteers, concomitant use of 1.5 mg/kg IV lidocaine with 500 mg ciprofloxacin twice daily resulted in an increase of lidocaine C<sub>max</sub> and AUC by 12% and 26%, respectively. Although lidocaine treatment was well tolerated at this elevated exposure, a possible interaction with CIPRO IV and an increase in adverse reactions related to lidocaine may occur upon concomitant administration.

### **12.4 Microbiology**

#### *Mechanism of Action*

The bactericidal action of ciprofloxacin results from inhibition of the enzymes topoisomerase II (DNA gyrase) and topoisomerase IV (both Type II topoisomerases), which are required for bacterial DNA replication, transcription, repair, and recombination.

#### *Mechanism of Resistance*

The mechanism of action of fluoroquinolones, including ciprofloxacin, is different from that of penicillins, cephalosporins, aminoglycosides, macrolides, and tetracyclines; therefore, microorganisms resistant to these classes of drugs may be susceptible to ciprofloxacin. Resistance to fluoroquinolones occurs primarily by either mutations in the DNA gyrases, decreased outer membrane permeability, or drug efflux. *In vitro* resistance to ciprofloxacin develops slowly by multiple step mutations. Resistance to ciprofloxacin due to spontaneous mutations occurs at a general frequency of between  $< 10^{-9}$  to  $1 \times 10^{-6}$ .

#### *Cross Resistance*

There is no known cross-resistance between ciprofloxacin and other classes of antimicrobials.

Ciprofloxacin has been shown to be active against most isolates of the following bacteria, both *in vitro* and in clinical infections [see *Indications and Usage* ([1](#))].

#### Gram-positive bacteria

*Bacillus anthracis*

*Enterococcus faecalis*

*Staphylococcus aureus* (methicillin-susceptible isolates only)

*Staphylococcus epidermidis* (methicillin-susceptible isolates only)

*Staphylococcus saprophyticus*

*Streptococcus pneumoniae*

*Streptococcus pyogenes*

#### Gram-negative bacteria

*Citrobacter koseri*

*Citrobacter freundii*

*Enterobacter cloacae*

*Escherichia coli*

*Haemophilus influenzae*

*Haemophilus parainfluenzae*

*Klebsiella pneumoniae*

*Moraxella catarrhalis*

*Morganella morganii*

*Proteus mirabilis*

*Proteus vulgaris*

*Providencia rettgeri*

*Providencia stuartii*

*Pseudomonas aeruginosa*

*Serratia marcescens*

*Yersinia pestis*

The following *in vitro* data are available, but their clinical significance is unknown. At least 90 percent of the following bacteria exhibit an *in vitro* minimum inhibitory concentration (MIC) less than or equal to the susceptible breakpoint for ciprofloxacin ( $\leq 1$  mcg/mL). However, the efficacy of ciprofloxacin in treating clinical infections due to these bacteria has not been established in adequate and well-controlled clinical trials.

#### Gram-positive bacteria

*Staphylococcus haemolyticus* (methicillin-susceptible isolates only)

*Staphylococcus hominis* (methicillin-susceptible isolates only)

#### Gram-negative bacteria

*Acinetobacter lwoffii*

*Aeromonas hydrophila*

*Edwardsiella tarda*

*Enterobacter aerogenes*

*Klebsiella oxytoca*

*Legionella pneumophila*

*Pasteurella multocida*

#### *Susceptibility Test Methods*

When available, the clinical microbiology laboratory should provide the results of *in vitro* susceptibility test results for antimicrobial drug products used in resident hospitals to the physician as periodic reports that describe the susceptibility profile of nosocomial and community-acquired pathogens. These reports should aid the physician in selecting an antibacterial drug product for treatment.

#### *Dilution Techniques*

Quantitative methods are used to determine antimicrobial minimum inhibitory concentrations (MICs). These MICs provide estimates of the susceptibility of bacteria to antimicrobial compounds. The MICs should be determined using a standardized test method (broth and/or agar).<sup>5, 6, 7</sup> The MIC values should be interpreted according to criteria provided in Table 11.

### Diffusion Techniques

Quantitative methods that require measurement of zone diameters can also provide reproducible estimates of the susceptibility of bacteria to antimicrobial compounds. The zone size provides an estimate of the susceptibility of bacteria to antimicrobial compounds. The zone size should be determined using a standardized test method.<sup>6, 7, 8</sup> This procedure uses paper disks impregnated with 5 mcg ciprofloxacin to test the susceptibility of bacteria to ciprofloxacin. The disc diffusion interpretive criteria are provided in Table 11.

**Table 11: Susceptibility Test Interpretive Criteria for Ciprofloxacin**

Bacteria	MIC (mcg/mL)			Zone Diameter (mm)		
	S	I	R	S	I	R
<i>Enterobacteriaceae</i>	≤1	2	≥4	≥21	16–20	≤15
<i>Enterococcus faecalis</i>	≤1	2	≥4	≥21	16–20	≤15
<i>Staphylococcus aureus</i>	≤1	2	≥4	≥21	16–20	≤15
<i>Staphylococcus epidermidis</i>	≤1	2	≥4	≥21	16–20	≤15
<i>Staphylococcus saprophyticus</i>	≤1	2	≥4	≥21	16–20	≤15
<i>Pseudomonas aeruginosa</i>	≤1	2	≥4	≥21	16–20	≤15
<i>Haemophilus influenzae</i> <sup>1</sup>	≤1	-	-	≥21	-	-
<i>Haemophilus parainfluenzae</i> <sup>1</sup>	≤1	-	-	≥21	-	-
<i>Streptococcus pneumoniae</i>	≤1	2	≥4	≥21	16–20	≤15
<i>Streptococcus pyogenes</i>	≤1	2	≥4	≥21	16–20	≤15
<i>Bacillus anthracis</i> <sup>1</sup>	≤0.25	-	-	-	-	-
<i>Yersinia pestis</i> <sup>1</sup>	≤0.25	-	-	-	-	-

S=Susceptible, I=Intermediate, and R=Resistant.

<sup>1</sup> The current absence of data on resistant isolates precludes defining any results other than “Susceptible”. If isolates yield MIC results other than susceptible, they should be submitted to a reference laboratory for further testing.

A report of “Susceptible” indicates that the antimicrobial is likely to inhibit growth of the pathogen if the antimicrobial compound reaches the concentrations at the site of infection necessary to inhibit growth of the pathogen. A report of “Intermediate” indicates that the result should be considered equivocal, and, if the microorganism is not fully susceptible to alternative, clinically feasible drugs, the test should be repeated. This category implies possible clinical applicability in body sites where the drug is physiologically concentrated or in situations where high dosage of drug can be used. This category also provides a buffer zone that prevents small uncontrolled technical factors from causing major discrepancies in interpretation. A report of “Resistant” indicates that the antimicrobial is not likely to inhibit growth of the pathogen if the antimicrobial compound reaches the concentrations usually achievable at the infection site; other therapy should be selected.

### Quality Control

Standardized susceptibility test procedures require the use of laboratory controls to monitor the accuracy and precision of supplies and reagents used in the assay, and the techniques of the individuals performing the test.<sup>5, 6, 7, 8</sup> Standard ciprofloxacin powder should provide the following range of MIC values noted in Table 12. For the diffusion technique using the ciprofloxacin 5 mcg disk the criteria in Table 12 should be achieved.

**Table 12: Acceptable Quality Control Ranges for Ciprofloxacin**

Bacteria	MIC range (mcg/mL)	Zone Diameter (mm)
<i>Enterococcus faecalis</i> ATCC 29212	0.25–2	-
<i>Escherichia coli</i> ATCC 25922	0.004–0.015	30–40
<i>Haemophilus influenzae</i> ATCC 49247	0.004–0.03	34–42
<i>Pseudomonas aeruginosa</i> ATCC 27853	0.25–1	25–33
<i>Staphylococcus aureus</i> ATCC 29213	0.12–0.5	-
<i>Staphylococcus aureus</i> ATCC 25923	-	22–30

## 13 NONCLINICAL TOXICOLOGY

### 13.1 Carcinogenesis, Mutagenesis, Impairment of Fertility

A total of 8 *in vitro* mutagenicity tests have been conducted with ciprofloxacin, and the test results are listed below:

- Salmonella/Microsome Test (Negative)
- *E. coli* DNA Repair Assay (Negative)
- Mouse Lymphoma Cell Forward Mutation Assay (Positive)
- Chinese Hamster V<sub>79</sub> Cell HGPRT Test (Negative)
- Syrian Hamster Embryo Cell Transformation Assay (Negative)
- *Saccharomyces cerevisiae* Point Mutation Assay (Negative)
- *Saccharomyces cerevisiae* Mitotic Crossover and Gene Conversion Assay (Negative)
- Rat Hepatocyte DNA Repair Assay (Positive)
- Thus, 2 of the 8 tests were positive, but results of the following 3 *in vivo* test systems gave negative results:
- Rat Hepatocyte DNA Repair Assay
- Micronucleus Test (Mice)
- Dominant Lethal Test (Mice)

Long-term carcinogenicity studies in rats and mice resulted in no carcinogenic or tumorigenic effects due to ciprofloxacin at daily oral dose levels up to 250 mg/kg and 750 mg/kg to rats and mice, respectively (approximately 1.7- times and 2.5- times the highest recommended therapeutic dose based upon body surface area, respectively).

Results from photo co-carcinogenicity testing indicate that ciprofloxacin does not reduce the time to appearance of UV-induced skin tumors as compared to vehicle control. Hairless (Skh-1) mice were exposed to UVA light for 3.5 hours five times every two weeks for up to 78 weeks while concurrently being administered ciprofloxacin. The time to development of the first skin tumors was 50 weeks in mice treated concomitantly with UVA and ciprofloxacin (mouse dose approximately equal to maximum recommended human dose based upon body surface area), as opposed to 34 weeks when animals were treated with both UVA and vehicle. The times to development of skin tumors ranged from 16 to 32 weeks in mice treated concomitantly with UVA and other quinolones.<sup>9</sup>

In this model, mice treated with ciprofloxacin alone did not develop skin or systemic tumors. There are no data from similar models using pigmented mice and/or fully haired mice. The clinical significance of these findings to humans is unknown.

Fertility studies performed in rats at oral doses of ciprofloxacin up to 100 mg/kg (approximately 0.7-times the highest recommended therapeutic dose based upon body surface area) revealed no evidence of impairment.

### 13.2 Animal Toxicology and/or Pharmacology

Ciprofloxacin and other quinolones have been shown to cause arthropathy in immature animals of most species tested [*see Warnings and Precautions (5.11)*].

Damage of weight-bearing joints was observed in juvenile dogs and rats. In young beagles, 100 mg/kg ciprofloxacin, given daily for 4 weeks, caused degenerative articular changes of the knee joint. At 30 mg/kg, the effect on the joint was minimal. In a subsequent study in young beagle dogs, oral ciprofloxacin doses of 30 mg/kg and 90 mg/kg ciprofloxacin (approximately 1.3- times and 3.5-times the pediatric dose based upon comparative plasma AUCs) given daily for 2 weeks caused articular changes which were still observed by histopathology after a treatment-free period of 5 months. At 10 mg/kg (approximately 0.6-times the pediatric dose based upon comparative plasma AUCs), no effects on joints were observed. This dose was also not associated with arthrotoxicity after an additional treatment-free period of 5 months. In another study, removal of weight bearing from the joint reduced the lesions but did not totally prevent them.

Crystalluria, sometimes associated with secondary nephropathy, occurs in laboratory animals dosed with ciprofloxacin. This is primarily related to the reduced solubility of ciprofloxacin under alkaline conditions, which predominate in the urine of test animals; in man, crystalluria is rare since human urine is typically acidic. In rhesus monkeys, crystalluria

without nephropathy was noted after single oral doses as low as 5 mg/kg (approximately 0.07-times the highest recommended therapeutic dose based upon body surface area). After 6 months of intravenous dosing at 10 mg/kg/day, no nephropathological changes were noted; however, nephropathy was observed after dosing at 20 mg/kg/day for the same duration (approximately 0.2-times the highest recommended therapeutic dose based upon body surface area).

In dogs, ciprofloxacin at 3 mg/kg and 10 mg/kg by rapid intravenous injection (15 sec.) produces pronounced hypotensive effects. These effects are considered to be related to histamine release, since they are partially antagonized by pyrilamine, an antihistamine. In rhesus monkeys, rapid intravenous injection also produces hypotension but the effect in this species is inconsistent and less pronounced.

In mice, concomitant administration of nonsteroidal anti-inflammatory drugs such as phenylbutazone and indomethacin with quinolones has been reported to enhance the CNS stimulatory effect of quinolones.

Ocular toxicity seen with some related drugs has not been observed in ciprofloxacin-treated animals

## 14 CLINICAL STUDIES

### 14.1 Empirical Therapy In Adult Febrile Neutropenic Patients

The safety and efficacy of CIPRO IV, 400 mg intravenously every 8 hours, in combination with piperacillin sodium, 50 mg/kg intravenously every 4 hours, for the empirical therapy of febrile neutropenic patients were studied in one large pivotal multicenter, randomized trial and were compared to those of tobramycin, 2 mg/kg intravenously every 8 hours, in combination with piperacillin sodium, 50 mg/kg intravenously every 4 hours.

Clinical response rates observed in this study were as follows:

The clinical success and bacteriologic eradication rates in the Per Protocol population were similar between ciprofloxacin and the comparator group as shown in Table 13.

**Table 13: Clinical Response Rates**

<b>Outcomes</b>	<b>CIPRO IV/Piperacillin N = 233 Success (%)</b>	<b>Tobramycin/Piperacillin N = 237 Success (%)</b>
Clinical Resolution of Initial Febrile Episode with No Modifications of Empirical Regimen <sup>1</sup>	63 (27%)	52 (21.9%)
Clinical Resolution of Initial Febrile Episode Including Patients with Modifications of Empirical Regimen	187 (80.3%)	185 (78.1%)
Overall Survival	224 (96.1%)	223 (94.1%)

<sup>1</sup> To be evaluated as a clinical resolution, patients had to have: (1) resolution of fever; (2) microbiological eradication of infection (if an infection was microbiologically documented); (3) resolution of signs/symptoms of infection; and (4) no modification of empirical antibiotic regimen

### 14.2 Complicated Urinary Tract Infection and Pyelonephritis—Efficacy in Pediatric Patients

Ciprofloxacin, administered IV and/or orally, was compared to a cephalosporin for treatment of complicated urinary tract infections (cUTI) and pyelonephritis in pediatric patients 1 to 17 years of age (mean age of  $6 \pm 4$  years). The trial was conducted in the US, Canada, Argentina, Peru, Costa Rica, Mexico, South Africa, and Germany. The duration of therapy was 10 to 21 days (mean duration of treatment was 11 days with a range of 1 to 88 days). The primary objective of the study was to assess musculoskeletal and neurological safety.

Patients were evaluated for clinical success and bacteriological eradication of the baseline organism(s) with no new infection or superinfection at 5 to 9 days post-therapy (Test of Cure or TOC). The Per Protocol population had a causative organism(s) with protocol specified colony count(s) at baseline, no protocol violation, and no premature discontinuation or loss to follow-up (among other criteria).

The clinical success and bacteriologic eradication rates in the Per Protocol population were similar between ciprofloxacin and the comparator group as shown in Table 14.

**Table 14: Clinical Success and Bacteriologic Eradication at Test of Cure (5 to 9 Days Post-Therapy)**

	<b>CIPRO</b>	<b>Comparator</b>
Randomized Patients	337	352
Per Protocol Patients	211	231
Clinical Response at 5 to 9 Days Post-Treatment	95.7% (202/211)	92.6% (214/231)
95% CI [-1.3%, 7.3%]		
Bacteriologic Eradication by Patient at 5 to 9 Days Post-Treatment <sup>1</sup>	84.4% (178/211)	78.3% (181/231)
95% CI [-1.3%, 13.1%]		
Bacteriologic Eradication of the Baseline Pathogen at 5 to 9 Days Post-Treatment		
<i>Escherichia coli</i>	156/178 (88%)	161/179 (90%)

<sup>1</sup> Patients with baseline pathogen(s) eradicated and no new infections or superinfections/total number of patients. There were 5.5% (6/211) ciprofloxacin and 9.5% (22/231) comparator patients with superinfections or new infections.

### 14.3 Inhalational Anthrax in Adults and Pediatrics

#### *Additional information*

The mean serum concentrations of ciprofloxacin associated with a statistically significant improvement in survival in the rhesus monkey model of inhalational anthrax are reached or exceeded in adult and pediatric patients receiving oral and intravenous regimens. Ciprofloxacin pharmacokinetics have been evaluated in various human populations. The mean peak serum concentration achieved at steady-state in human adults receiving 500 mg orally every 12 hours is 2.97 mcg/mL, and 4.56 mcg/mL following 400 mg intravenously every 12 hours. The mean trough serum concentration at steady-state for both of these regimens is 0.2 mcg/mL. In a study of 10 pediatric patients between 6 and 16 years of age, the mean peak plasma concentration achieved is 8.3 mcg/mL and trough concentrations range from 0.09 mcg/mL to 0.26 mcg/mL, following two 30-minute intravenous infusions of 10 mg/kg administered 12 hours apart. After the second intravenous infusion patients switched to 15 mg/kg orally every 12 hours achieve a mean peak concentration of 3.6 mcg/mL after the initial oral dose. Long-term safety data, including effects on cartilage, following the administration of ciprofloxacin to pediatric patients are limited. Ciprofloxacin serum concentrations achieved in humans serve as a surrogate endpoint reasonably likely to predict clinical benefit and provide the basis for this indication.<sup>11</sup>

A placebo-controlled animal study in rhesus monkeys exposed to an inhaled mean dose of 11 LD<sub>50</sub> (~5.5 x 10<sup>5</sup>) spores (range 5-30 LD<sub>50</sub>) of *B. anthracis* was conducted. The minimal inhibitory concentration (MIC) of ciprofloxacin for the anthrax strain used in this study was 0.08 mcg/mL. In the animals studied, mean serum concentrations of ciprofloxacin achieved at expected T<sub>max</sub> (1 hour post-dose) following oral dosing to steady-state ranged from 0.98 mcg/mL to 1.69 mcg/mL. Mean steady-state trough concentrations at 12 hours post-dose ranged from 0.12 mcg/mL to 0.19 mcg/mL.<sup>10</sup> Mortality due to anthrax for animals that received a 30-day regimen of oral ciprofloxacin beginning 24 hours post-exposure was significantly lower (1/9), compared to the placebo group (9/10) [p= 0.001]. The one ciprofloxacin-treated animal that died of anthrax did so following the 30-day drug administration period.<sup>11</sup>

More than 9300 persons were recommended to complete a minimum of 60 days of antibacterial prophylaxis against possible inhalational exposure to *B. anthracis* during 2001. Ciprofloxacin was recommended to most of those individuals for all or part of the prophylaxis regimen. Some persons were also given anthrax vaccine or were switched to alternative antibacterial drugs. No one who received ciprofloxacin or other therapies as prophylactic treatment subsequently developed inhalational anthrax. The number of persons who received ciprofloxacin as all or part of their post-exposure prophylaxis regimen is unknown.

#### **14.4 Plague**

A placebo-controlled animal study in African green monkeys exposed to an inhaled mean dose of 110 LD<sub>50</sub> (range 92 to 127 LD<sub>50</sub>) of *Yersinia pestis* (CO92 strain) was conducted. The minimal inhibitory concentration (MIC) of ciprofloxacin for the *Y. pestis* strain used in this study was 0.015 mcg/mL. Mean peak serum concentrations of ciprofloxacin achieved at the end of a single 60 minute infusion were 3.49 mcg/mL ± 0.55 mcg/mL, 3.91 mcg/mL ± 0.58 mcg/mL and 4.03 mcg/mL ± 1.22 mcg/mL on Day 2, Day 6 and Day 10 of treatment in African green monkeys, respectively. All trough concentrations (Day 2, Day 6 and Day 10) were < 0.5 mcg/mL. Animals were randomized to receive either a 10-day regimen of intravenous ciprofloxacin 15 mg/kg, or placebo beginning when animals were found to be febrile (a body temperature greater than 1.5°C over baseline for two hours), or at 76 hours post-challenge, whichever occurred sooner. Mortality in the ciprofloxacin group was significantly lower (1/10) compared to the placebo group (2/2) [difference: -90.0%, 95% exact confidence interval: -99.8% to -5.8%]. The one ciprofloxacin-treated animal that died did not receive the proposed dose of ciprofloxacin due to a failure of the administration catheter. Circulating ciprofloxacin concentration was below 0.5 mcg/mL at all timepoints tested in this animal. It became culture negative on Day 2 of treatment, but had a resurgence of low grade bacteremia on Day 6 after treatment initiation. Terminal blood culture in this animal was negative.<sup>12</sup>

## **15 REFERENCES**

1. 21 CFR 314.510 (Subpart H—Accelerated Approval of New Drugs for Life-Threatening Illnesses).
2. Friedman J, Polifka J. Teratogenic effects of drugs: a resource for clinicians (TERIS). Baltimore, Maryland: Johns Hopkins University Press, 2000:149-195.
3. Loebstein R, Addis A, Ho E, et al. Pregnancy outcome following gestational exposure to fluoroquinolones: a multicenter prospective controlled study. *Antimicrob Agents Chemother.* 1998;42(6):1336-1339.
4. Schaefer C, Amoura-Elefant E, Vial T, et al. Pregnancy outcome after prenatal quinolone exposure. Evaluation of a case registry of the European network of teratology information services (ENTIS). *Eur J Obstet Gynecol Reprod Biol.* 1996;69:83-89.
5. Clinical and Laboratory Standards Institute (CLSI), *Methods for Dilution Antimicrobial Susceptibility Tests for Bacteria That Grow Aerobically; Approved Standard—Tenth Edition.* CLSI Document M7-A10 [2015]. Clinical and Laboratory Standards Institute, 950 West Valley Rd., Suite 2500, Wayne, PA, 19087-1898.
6. Clinical and Laboratory Standards Institute (CLSI). *Performance Standards for Antimicrobial Susceptibility Testing; Twenty-seventh Informational Supplement.* CLSI Document M100 S27 [2017]. Clinical and Laboratory Standards Institute, 950 West Valley Rd., Suite 2500, Wayne, PA. 19087- 1898.
7. Clinical and Laboratory Standards Institute (CLSI). *Methods for Antimicrobial Dilution and Disk Susceptibility Testing of Infrequently Isolated or Fastidious Bacteria; Approved Guideline—Third Edition.* CLSI Document M45-A3 [2016]. Clinical and Laboratory Standards Institute, 950 West Valley Rd., Suite 2500, Wayne, PA. 19087- 1898.
8. Clinical and Laboratory Standards Institute (CLSI), *Performance Standards for Antimicrobial Disk Susceptibility Tests; Approved Standard—Twelfth Edition.* CLSI Document M2-A12 [2015]. Clinical and Laboratory Standards Institute, 950 West Valley Rd., Suite 2500, Wayne, PA. 19087- 1898.

9. CReport presented at the FDA's Anti-Infective Drug and Dermatological Drug Product's Advisory Committee meeting, March 31, 1993, Silver Spring, MD. Report available from FDA, CDER, Advisors and Consultants Staff, HFD-21, 1901 Chapman Avenue, Room 200, Rockville, MD 20852, USA.
10. Kelly DJ, et al. Serum concentrations of penicillin, doxycycline, and ciprofloxacin during prolonged therapy in rhesus monkeys. *J Infect Dis* 1992; 166:1184-7.
11. Friedlander AM, et al. Postexposure prophylaxis against experimental inhalational anthrax. *J Infect Dis* 1993; 167:1239-42.
12. Anti-infective Drugs Advisory Committee Meeting, April 3, 2012 - The efficacy of Ciprofloxacin for treatment of Pneumonic Plague.

## **16 HOW SUPPLIED/STORAGE AND HANDLING**

CIPRO IV (ciprofloxacin) is available as a clear, colorless to slightly yellowish solution in flexible containers not made with natural rubber latex.

SIZE	STRENGTH	NDC NUMBER
200 mL	5% Dextrose 400 mg, 0.2%	50419-759-01

### **STORAGE**

Store between 5–25°C (41–77°F).

Protect from light, avoid excessive heat, protect from freezing.

Ciprofloxacin is also available as CIPRO (ciprofloxacin HCl) Tablets 250, 500 mg and CIPRO (ciprofloxacin\*) 5% and 10% Oral Suspension.

## **17 PATIENT COUNSELING INFORMATION**

Advise the patient to read the *FDA*-approved patient labeling (Medication Guide)

### **Serious Adverse Reactions**

Advise patients to stop taking CIPRO if they experience an adverse reaction and to call their healthcare provider for advice on completing the full course of treatment with another antibacterial drug.

Inform patients of the following serious adverse reactions that have been associated with CIPRO IV or other fluoroquinolone use:

- **Disabling and potentially irreversible serious adverse reactions that may occur together:** Inform patients that disabling and potentially irreversible serious adverse reactions, including tendinitis and tendon rupture, peripheral neuropathies, and central nervous system effects, have been associated with use of CIPRO IV and may occur together in the same patient. Inform patients to stop taking CIPRO immediately if they experience an adverse reaction and to call their healthcare provider.
- **Tendon Disorders:** Instruct patients to contact their healthcare provider if they experience pain, swelling, or inflammation of a tendon, or weakness or inability to use one of their joints; rest and refrain from exercise; and discontinue CIPRO treatment. Symptoms may be irreversible. The risk of severe tendon disorder with fluoroquinolones is higher in older patients usually over 60 years of age, in patients taking corticosteroid drugs, and in patients with kidney, heart or lung transplants.
- **Peripheral Neuropathies:** Inform patients that peripheral neuropathies have been associated with ciprofloxacin use, symptoms may occur soon after initiation of therapy and may be irreversible. If symptoms of peripheral neuropathy including pain, burning, tingling, numbness and/or weakness develop, immediately discontinue CIPRO and tell them to contact their physician.

- **Central nervous system effects** (for example, convulsions, dizziness, lightheadedness, increased intracranial pressure): Inform patients that convulsions have been reported in patients receiving fluoroquinolones, including CIPRO IV. Instruct patients to notify their physician before taking this drug if they have a history of convulsions. Inform patients that they should know how they react to CIPRO before they operate an automobile or machinery or engage in other activities requiring mental alertness and coordination. Instruct patients to notify their physician if persistent headache with or without blurred vision occurs.
- **Exacerbation of Myasthenia Gravis:** Instruct patients to inform their physician of any history of myasthenia gravis. Instruct patients to notify their physician if they experience any symptoms of muscle weakness, including respiratory difficulties.
- **Hypersensitivity Reactions:** Inform patients that ciprofloxacin can cause hypersensitivity reactions, even following a single dose, and to discontinue the drug at the first sign of a skin rash, hives or other skin reactions, a rapid heartbeat, difficulty in swallowing or breathing, any swelling suggesting angioedema (for example, swelling of the lips, tongue, face, tightness of the throat, hoarseness), or other symptoms of an allergic reaction.
- **Hepatotoxicity:** Inform patients that severe hepatotoxicity (including acute hepatitis and fatal events) has been reported in patients taking CIPRO IV. Instruct patients to inform their physician if they experience any signs or symptoms of liver injury including: loss of appetite, nausea, vomiting, fever, weakness, tiredness, right upper quadrant tenderness, itching, yellowing of the skin and eyes, light colored bowel movements or dark colored urine.
- **Diarrhea:** Diarrhea is a common problem caused by antibiotics which usually ends when the antibiotic is discontinued. Sometimes after starting treatment with antibiotics, patients can develop watery and bloody stools (with or without stomach cramps and fever) even as late as two or more months after having taken the last dose of the antibiotic. If this occurs, instruct patients to contact their physician as soon as possible.
- **Prolongation of the QT Interval:** Instruct patients to inform their physician of any personal or family history of QT prolongation or proarrhythmic conditions such as hypokalemia, bradycardia, or recent myocardial ischemia; if they are taking any Class IA (quinidine, procainamide), or Class III (amiodarone, sotalol) antiarrhythmic agents. Instruct patients to notify their physician if they have any symptoms of prolongation of the QT interval, including prolonged heart palpitations or a loss of consciousness.
- **Musculoskeletal Disorders in Pediatric Patients:** Instruct parents to inform their child's physician if the child has a history of joint-related problems before taking this drug. Inform parents of pediatric patients to notify their child's physician of any joint-related problems that occur during or following ciprofloxacin therapy [*see Warnings and Precautions (5.12) and Use in Specific Populations (8.4)*].
- **Tizanidine:** Instruct patients not to use ciprofloxacin if they are already taking tizanidine. CIPRO increases the effects of tizanidine (Zanaflex®).
- **Theophylline:** Inform patients that CIPRO IV may increase the effects of theophylline. Life-threatening CNS effects and arrhythmias can occur. Advise the patients to immediately seek medical help if they experience seizures, palpitations, or difficulty breathing.
- **Caffeine:** Inform patients that CIPRO IV may increase the effects of caffeine. There is a possibility of caffeine accumulation when products containing caffeine are consumed while taking quinolones.
- **Photosensitivity/Phototoxicity:** Inform patients that photosensitivity/phototoxicity has been reported in patients receiving fluoroquinolones. Inform patients to minimize or avoid exposure to natural or artificial sunlight (tanning beds or UVA/B treatment) while taking quinolones. If patients need to be outdoors while using quinolones, instruct them to wear loose-fitting clothes that protect skin from sun exposure and discuss other sun protection measures with their physician. If a sunburn-like reaction or skin eruption occurs, instruct patients to contact their physician.

### **Antibacterial Resistance**

Inform patients that antibacterial drugs including CIPRO IV should only be used to treat bacterial infections. They do not treat viral infections (for example, the common cold). When CIPRO IV prescribed to treat a bacterial infection, patients should be told that although it is common to feel better early in the course of therapy, the medication should be taken

exactly as directed. Skipping doses or not completing the full course of therapy may (1) decrease the effectiveness of the immediate treatment and (2) increase the likelihood that bacteria will develop resistance and will not be treatable by CIPRO IV or other antibacterial drugs in the future.

**Administration**

Inform patients to drink fluids liberally while taking CIPRO to avoid formation of highly concentrated urine and crystal formation in the urine.

**Drug Interactions Oral Antidiabetic Agents**

Inform patients that hypoglycemia has been reported when ciprofloxacin and oral antidiabetic agents were co-administered; if low blood sugar occurs with CIPRO IV, instruct them to consult their physician and that their antibacterial medicine may need to be changed.

**Anthrax and Plague Studies**

Inform patients given CIPRO IV for this condition that efficacy studies could not be conducted in humans for ethical and feasibility reasons. Therefore, approval for these conditions was based on efficacy studies conducted in animals.

## Medication Guide

**CIPRO<sup>®</sup> (*Sip-row*)**  
**(ciprofloxacin hydrochloride)**  
**Tablets**  
**for oral use**

**CIPRO<sup>®</sup> (*Sip-row*)**  
**(ciprofloxacin hydrochloride)**  
**for oral suspension**

**CIPRO<sup>®</sup> XR (*Sip-row*)**  
**(ciprofloxacin hydrochloride)**  
**Tablets**  
**for oral use**

**CIPRO<sup>®</sup> IV (*Sip-row*)**  
**(ciprofloxacin)**  
**Injection**  
**for intravenous infusion**

Read this Medication Guide before you start taking CIPRO and each time you get a refill. There may be new information. This information does not take the place of talking to your healthcare provider about your medical condition or your treatment.

### **What is the most important information I should know about CIPRO?**

**CIPRO, a fluoroquinolone antibacterial medicine, can cause serious side effects. Some of these serious side effects can happen at the same time and could result in death.**

If you get any of the following serious side effects while you take CIPRO, you should stop taking CIPRO immediately and get medical help right away.

#### **1. Tendon rupture or swelling of the tendon (tendinitis).**

- **Tendon problems can happen in people of all ages who take CIPRO.** Tendons are tough cords of tissue that connect muscles to bones. **Symptoms of tendon problems may include:**
  - Pain, swelling, tears and swelling of the tendons including the back of the ankle (Achilles), shoulder, hand, or other tendon sites.
- **The risk of getting tendon problems while you take CIPRO is higher if you:**
  - are over 60 years of age
  - are taking steroids (corticosteroids)
  - have had a kidney, heart or lung transplant
- **Tendon problems can happen in people who do not have the above risk factors when they take CIPRO.**
- **Other reasons that can increase your risk of tendon problems can include:**
  - physical activity or exercise
  - kidney failure
  - tendon problems in the past, such as in people with rheumatoid arthritis (RA)

- **Stop taking CIPRO immediately and get medical help right away at the first sign of tendon pain, swelling or inflammation.** The most common area of pain and swelling is the Achilles tendon at the back of your ankle. This can also happen with other tendons.
  - **Tendon rupture can happen while you are taking or after you have finished taking CIPRO.** Tendon ruptures can happen within hours or days of taking CIPRO and have happened up to several months after people have finished taking their fluoroquinolone.
  - **Stop taking CIPRO immediately and get medical help right away if you get any of the following signs or symptoms of a tendon rupture:**
    - hear or feel a snap or pop in a tendon area
    - bruising right after an injury in a tendon area
    - unable to move the affected area or bear weight
- 2. Changes in sensation and possible nerve damage (Peripheral Neuropathy).** Damage to the nerves in arms, hands, legs, or feet can happen in people who take fluoroquinolones, including CIPRO. Stop taking CIPRO immediately and talk to your healthcare provider right away if you get any of the following symptoms of peripheral neuropathy in your arms, hands, legs, or feet:
- pain
  - burning
  - tingling
  - numbness
  - weakness

CIPRO may need to be stopped to prevent permanent nerve damage.

- 3. Central Nervous System (CNS) effects.** Seizures have been reported in people who take fluoroquinolone antibacterial medicines, including CIPRO. Tell your healthcare provider if you have a history of seizures before you start taking CIPRO. CNS side effects may happen as soon as after taking the first dose of CIPRO. Stop taking CIPRO immediately and talk to your healthcare provider right away if you get any of these side effects, or other changes in mood or behavior:
- seizures
  - hear voices, see things, or sense things that are not there (hallucinations)
  - feel restless
  - tremors
  - feel anxious or nervous
  - confusion
  - depression
  - trouble sleeping
  - nightmares
  - feel lightheaded or dizzy
  - feel more suspicious (paranoia)
  - suicidal thoughts or acts
  - headaches that will not go away, with or without blurred vision

**4. Worsening of myasthenia gravis (a problem that causes muscle weakness).**

Fluoroquinolones like CIPRO may cause worsening of myasthenia gravis symptoms, including muscle weakness and breathing problems. Tell your healthcare provider if you have a history of myasthenia gravis before you start taking CIPRO. Call your healthcare provider right away if you have any worsening muscle weakness or breathing problems.

**What is CIPRO?**

CIPRO is a fluoroquinolone antibacterial medicine used in adults age 18 years and older to treat certain infections caused by certain germs called bacteria. These bacterial infections include:

- urinary tract infection
- chronic prostate infection

- lower respiratory tract infection
  - sinus infection
  - skin infection
  - bone and joint infection
  - nosocomial pneumonia
  - intra-abdominal infection, complicated
  - infectious diarrhea
  - typhoid (enteric) fever
  - cervical and urethral gonorrhea, uncomplicated
  - people with a low white blood cell count and a fever
  - inhalational anthrax
  - plague
- Studies of CIPRO for use in the treatment of plague and anthrax were done in animals only, because plague and anthrax could not be studied in people.
  - CIPRO should not be used in patients with acute exacerbation of chronic bronchitis, acute uncomplicated cystitis, and sinus infections, if there are other treatment options available.
  - CIPRO should not be used as the first choice of antibacterial medicine to treat lower respiratory tract infections caused by a certain type of bacterial called *Streptococcus pneumoniae*.
  - **CIPRO is also used in children younger than 18 years of age** to treat complicated urinary tract and kidney infections or who may have breathed in anthrax germs, have plague or have been exposed to plague germs.
  - Children younger than 18 years of age have a higher chance of getting bone, joint, or tendon (musculoskeletal) problems such as pain or swelling while taking CIPRO. CIPRO should not be used as the first choice of antibacterial medicine in children under 18 years of age.
  - **CIPRO XR is only used** in adults 18 years of age and older to treat urinary tract infections (complicated and uncomplicated), including kidney infections (pyelonephritis).
  - It is not known if CIPRO XR is safe and effective in children under 18 years of age.

### **Who should not take CIPRO?**

#### **Do not take CIPRO if you:**

- Have ever had a severe allergic reaction to an antibacterial medicine known as a fluoroquinolone, or are allergic to ciprofloxacin hydrochloride or any of the ingredients in CIPRO. See the end of this Medication Guide for a complete list of ingredients in CIPRO.
- Also take a medicine called tizanidine (Zanaflex®).

Ask your healthcare provider if you are not sure.

### **What should I tell my healthcare provider before taking CIPRO?**

#### **Before you take CIPRO, tell your healthcare provider if you:**

- have tendon problems; CIPRO should not be used in patients who have a history of tendon problems

- have a disease that causes muscle weakness (myasthenia gravis); CIPRO should not be used in patients who have a known history of myasthenia gravis
- have liver problems
- have central nervous system problems (such as epilepsy)
- have nerve problems; CIPRO should not be used in patients who have a history of a nerve problem called peripheral neuropathy
- have or anyone in your family has an irregular heartbeat, especially a condition called “QT prolongation”
- have or have had seizures
- have kidney problems. You may need a lower dose of CIPRO if your kidneys do not work well.
- have joint problems including rheumatoid arthritis (RA)
- have trouble swallowing pills
- have any other medical conditions
- are pregnant or plan to become pregnant. It is not known if CIPRO will harm your unborn baby.
- are breastfeeding or plan to breastfeed. CIPRO passes into breast milk. You and your healthcare provider should decide whether you will take CIPRO or breastfeed. You should not do both.

**Tell your healthcare provider about all the medicines you take**, including prescription and over-the-counter medicines, vitamins, and herbal supplements.

- CIPRO and other medicines can affect each other causing side effects.
- Especially tell your healthcare provider if you take:
  - a steroid medicine
  - an anti-psychotic medicine
  - a tricyclic antidepressant
  - a water pill (diuretic)
  - theophylline (such as Theo-24<sup>®</sup>, Elixophyllin<sup>®</sup>, Theochron<sup>®</sup>, Uniphyll<sup>®</sup>, Theolair<sup>®</sup>)
  - a medicine to control your heart rate or rhythm (antiarrhythmics)
  - an oral anti-diabetes medicine
  - phenytoin (Fosphenytoin Sodium<sup>®</sup>, Cerebyx<sup>®</sup>, Dilantin-125<sup>®</sup>, Dilantin<sup>®</sup>, Extended Phenytoin Sodium<sup>®</sup>, Prompt Phenytoin Sodium<sup>®</sup>, Phenytek<sup>®</sup>)
  - cyclosporine (Gengraf<sup>®</sup>, Neoral<sup>®</sup>, Sandimmune<sup>®</sup>, Sangcya<sup>®</sup>).
  - a blood thinner (such as warfarin, Coumadin<sup>®</sup>, Jantoven<sup>®</sup>)
  - methotrexate (Trexall<sup>®</sup>)
  - ropinirole (Requip<sup>®</sup>)
  - clozapine (Clozaril<sup>®</sup>, Fazaclo<sup>®</sup> ODT<sup>®</sup>)
  - a Non-Steroidal Anti-Inflammatory Drug (NSAID). Many common medicines for pain relief are NSAIDs. Taking an NSAID while you take CIPRO or other fluoroquinolones may increase your risk of central nervous system effects and seizures.

- sildenafil (Viagra<sup>®</sup>, Revatio<sup>®</sup>)
- duloxetine
- products that contain caffeine
- probenecid (Probalan<sup>®</sup>, Col-probenecid<sup>®</sup>)
- Certain medicines may keep CIPRO Tablets, CIPRO Oral Suspension from working correctly. Take CIPRO Tablets and Oral Suspension either 2 hours before or 6 hours after taking these medicines, vitamins, or supplements:
  - an antacid, multivitamin, or other medicine or supplements that has magnesium, calcium, aluminum, iron, or zinc
  - sucralfate (Carafate<sup>®</sup>)
  - didanosine (Videx<sup>®</sup>, Videx EC<sup>®</sup>)

Ask your healthcare provider for a list of these medicines if you are not sure.

Know the medicines you take. Keep a list of them to show your healthcare provider and pharmacist when you get a new medicine.

### **How should I take CIPRO?**

- Take CIPRO exactly as your healthcare provider tells you to take it.
- Your healthcare provider will tell you how much CIPRO to take and when to take it.
- Take CIPRO Tablets in the morning and evening at about the same time each day. Swallow the tablet whole. Do not split, crush or chew the tablet. Tell your healthcare provider if you cannot swallow the tablet whole.
- Take CIPRO Oral Suspension in the morning and evening at about the same time each day. Shake the CIPRO Oral Suspension bottle well each time before use for about 15 seconds to make sure the suspension is mixed well. Close the bottle completely after use.
- Take CIPRO XR one time each day at about the same time each day. Swallow the tablet whole. Do not split, crush or chew the tablet. Tell your healthcare provider if you cannot swallow the tablet whole.
- CIPRO IV is given to you by intravenous (IV) infusion into your vein, slowly, over 60 minutes, as prescribed by your healthcare provider.
- CIPRO can be taken with or without food.
- CIPRO should not be taken with dairy products (like milk or yogurt) or calcium-fortified juices alone, but may be taken with a meal that contains these products.
- Drink plenty of fluids while taking CIPRO.
- Do not skip any doses of CIPRO, or stop taking it, even if you begin to feel better, until you finish your prescribed treatment unless:
  - you have tendon problems. See **“What is the most important information I should know about CIPRO?”**
  - you have nerve problems. See **“What is the most important information I should know about CIPRO?”**
  - you have central nervous system problems. See **“What is the most important information I should know about CIPRO?”**

- you have a serious allergic reaction. See “**What are the possible side effects of CIPRO?**”
- your healthcare provider tells you to stop taking CIPRO

Taking all of your CIPRO doses will help make sure that all of the bacteria are killed. Taking all of your CIPRO doses will help lower the chance that the bacteria will become resistant to CIPRO. If you become resistant to CIPRO, CIPRO and other antibacterial medicines may not work for you in the future.

- If you take too much CIPRO, call your healthcare provider or get medical help right away.

### **What should I avoid while taking CIPRO?**

- CIPRO can make you feel dizzy and lightheaded. **Do not** drive, operate machinery, or do other activities that require mental alertness or coordination until you know how CIPRO affects you.
- Avoid sunlamps, tanning beds, and try to limit your time in the sun. CIPRO can make your skin sensitive to the sun (photosensitivity) and the light from sunlamps and tanning beds. You could get a severe sunburn, blisters or swelling of your skin. If you get any of these symptoms while you take CIPRO, call your healthcare provider right away. You should use a sunscreen and wear a hat and clothes that cover your skin if you have to be in sunlight.

### **What are the possible side effects of CIPRO?**

#### **CIPRO may cause serious side effects, including:**

- See, “**What is the most important information I should know about CIPRO?**”
- **Serious allergic reactions.** Serious allergic reactions, including death, can happen in people taking fluoroquinolones, including CIPRO, even after only 1 dose. Stop taking CIPRO and get emergency medical help right away if you get any of the following symptoms of a severe allergic reaction:
  - hives
  - trouble breathing or swallowing
  - swelling of the lips, tongue, face
  - throat tightness, hoarseness
  - rapid heartbeat
  - faint
  - skin rash

Skin rash may happen in people taking CIPRO even after only 1 dose. Stop taking CIPRO at the first sign of a skin rash and call your healthcare provider. Skin rash may be a sign of a more serious reaction to CIPRO.

- **Liver damage (hepatotoxicity).** Hepatotoxicity can happen in people who take CIPRO. Call your healthcare provider right away if you have unexplained symptoms such as:
  - nausea or vomiting
  - stomach pain
  - fever
  - weakness

- abdominal pain or tenderness
- itching
- unusual tiredness
- loss of appetite
- light colored bowel movements
- dark colored urine
- yellowing of your skin or the whites of your eyes

Stop taking CIPRO and tell your healthcare provider right away if you have yellowing of your skin or white part of your eyes, or if you have dark urine. These can be signs of a serious reaction to CIPRO (a liver problem). **Intestine infection (Pseudomembranous colitis).** Pseudomembranous colitis can happen with many antibacterial medicines, including CIPRO. Call your healthcare provider right away if you get watery diarrhea, diarrhea that does not go away, or bloody stools. You may have stomach cramps and a fever. Pseudomembranous colitis can happen 2 or more months after you have finished your antibacterial medicine.

- **Serious heart rhythm changes (QT prolongation and torsade de pointes).** Tell your healthcare provider right away if you have a change in your heart beat (a fast or irregular heartbeat), or if you faint. CIPRO may cause a rare heart problem known as prolongation of the QT interval. This condition can cause an abnormal heartbeat and can be very dangerous. The chances of this event are higher in people:
  - who are elderly
  - with a family history of prolonged QT interval
  - with low blood potassium (hypokalemia)
  - who take certain medicines to control heart rhythm (antiarrhythmics)
- **Joint Problems.** Increased chance of problems with joints and tissues around joints in children under 18 years old can happen. Tell your child's healthcare provider if your child has any joint problems during or after treatment with CIPRO.
- **Sensitivity to sunlight (photosensitivity).** See **"What should I avoid while taking CIPRO?"**

The most common side effects of CIPRO include:

- nausea
- diarrhea
- changes in liver function tests
- vomiting
- rash

Tell your healthcare provider about any side effect that bothers you, or that does not go away.

These are not all the possible side effects of CIPRO. For more information, ask your healthcare provider or pharmacist.

Call your doctor for medical advice about side effects. You may report side effects to FDA at 1-800-FDA-1088.

### **How should I store CIPRO?**

### **CIPRO Tablets**

- Store at room temperature between 20° to 25°C (68° to 77°F).

### **CIPRO Oral Suspension**

- Store microcapsules and diluent below 25°C (77°F).
- Do not freeze.
- After your CIPRO treatment is finished, safely throw away any unused oral suspension.

### **CIPRO XR**

- Store CIPRO XR between 59°F to 86°F (15°C to 30°C).

**Keep CIPRO and all medicines out of the reach of children.**

### **General Information about the safe and effective use of CIPRO.**

Medicines are sometimes prescribed for purposes other than those listed in a Medication Guide. Do not use CIPRO for a condition for which it is not prescribed. Do not give CIPRO to other people, even if they have the same symptoms that you have. It may harm them.

This Medication Guide summarizes the most important information about CIPRO. If you would like more information about CIPRO, talk with your healthcare provider. You can ask your healthcare provider or pharmacist for information about CIPRO that is written for healthcare professionals.

For more information call 1-888-842-2937.

### **What are the ingredients in CIPRO?**

#### **CIPRO Tablets:**

- **Active ingredient:** ciprofloxacin hydrochloride
- **Inactive ingredients:** cornstarch, microcrystalline cellulose, silicon dioxide, crospovidone, magnesium stearate, hypromellose, titanium dioxide, and polyethylene glycol

#### **CIPRO Oral Suspension:**

- **Active ingredient:** ciprofloxacin hydrochloride
- **Inactive ingredients:**
  - **Microcapsules contains:** povidone, methacrylic acid copolymer, hypromellose, magnesium stearate, and Polysorbate 20
  - **Diluent contains:** medium-chain triglycerides, sucrose, soy-lecithin, water, and strawberry flavor

#### **CIPRO XR:**

- **Active ingredient:** ciprofloxacin hydrochloride
- **Inactive ingredients:** crospovidone, hypromellose, magnesium stearate, polyethylene glycol, silica colloidal anhydrous, succinic acid, and titanium dioxide

#### **CIPRO IV:**

- **Active ingredient:** ciprofloxacin
- **Inactive ingredients:** lactic acid as a solubilizing agent, hydrochloric acid for pH adjustment

Manufactured for:



**Bayer HealthCare**

Bayer HealthCare Pharmaceuticals Inc.  
Whippany, NJ 07981

Manufactured in Germany

CIPRO is a registered trademark of Bayer Aktiengesellschaft.

**Rx Only**

©1987 Bayer HealthCare Pharmaceuticals Inc.

CIPRO (ciprofloxacin\*) 5% and 10% Oral Suspension Manufactured in Italy

CIPRO (ciprofloxacin HCl) Tablets Manufactured in Germany

This Medication Guide has been approved by the U.S. Food and Drug Administration

Revised:7/2016