

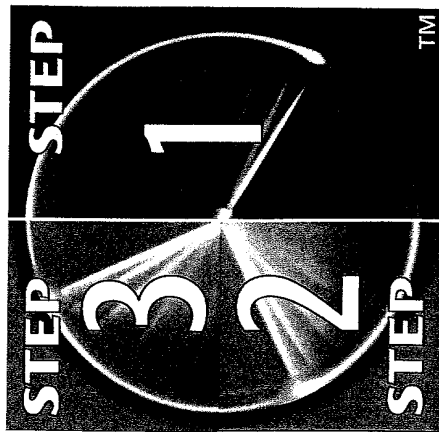
Store Brand Name
Nicotine Transdermal System

NDC 0000-0000-00

Store Brand Name
Nicotine Transdermal System
PATCH Contains 21mg, 14mg or 7mg
delivered over 24 hours
STOP SMOKING AID KIT



INCLUDES ALL 3 STEPS



STEP 1

21mg delivered over 24 hours
Contains 28 Patches (4 week supply)

STEP 2

14mg delivered over 24 hours
Contains 14 Patches (2 week supply)

STEP 3

7mg delivered over 24 hours
Contains 14 Patches (2 week supply)

with
**Behavior
Support
Program**



Compact disc, self-help
guide, and disposal tray included.

56
PATCHES

COMPLETE STOP SMOKING AID KIT – USE ONLY IF YOU SMOKE MORE THAN 10 CIGARETTES PER DAY

1. You must be motivated to quit.

4. Do not use patch for more than 8 weeks.

TO INCREASE YOUR SUCCESS IN QUITTING:

Complete the front panel before use.

STOP SMOKING AID KIT

the enclosed booklet and on the compact disc.

Drug Facts

Active ingredient (in each patch)
 Nicotine, 21 mg delivered over 24 hours.
 Nicotine, 14 mg delivered over 24 hours.
 Nicotine, 7 mg delivered over 24 hours.

Use reduces withdrawal symptoms, including nicotine craving, associated with quitting smoking

Warnings
 If you are pregnant or breast-feeding, only use this medicine on the advice of your health care provider. Smoking can seriously harm your child. Try to stop smoking without using any nicotine replacement medicine. This medicine is believed to be safer than smoking. However, the risks to your child from this medicine are not fully known.

Do not use
 • if you continue to smoke, chew tobacco, use snuff, use nicotine gum, or use nicotine patch or other nicotine containing products

Ask a doctor before use if you have
 • heart disease, recent heart attack, or irregular heartbeat. Nicotine can increase your heart rate.
 • high blood pressure not controlled with medication. Nicotine can increase your blood pressure.
 • an allergy to adhesive tape or have skin problems, because you are more likely to get rashes.

Ask a doctor or pharmacist before use if you are
 • using a non-nicotine stop smoking drug
 • taking a prescription medicine for depression or asthma. Your prescription dose may need to be adjusted.

When using this product
 • do not smoke even when not wearing the patch. The nicotine in your skin will still be entering your bloodstream for several hours after you take off the patch.
 • if you have vivid dreams or other sleep disturbances remove this patch at bedtime

Stop use and ask a doctor if
 • skin redness caused by the patch does not go away after four days, or if your skin swells, or you get a rash
 • irregular heartbeat or palpitations occur
 • you get symptoms of nicotine overdose, such as nausea, vomiting, dizziness, weakness and rapid heartbeat

Keep out of reach of children and pets. Used patches have enough nicotine to poison children and pets. If swallowed, get medical help or contact a Poison Control Center right away. Discard used patches using the enclosed disposal tray.

Directions
 • if you are under 18 years of age, ask a doctor before use
 • before using this product, read the enclosed self-help guide for complete directions and other information.
 • stop smoking completely when you begin using the patch
 • if you smoke more than 10 cigarettes per day, use the following schedule below:

Weeks 1 thru 4	STEP 1 use one 21 mg patch/day	Weeks 5 and 6	STEP 2 use one 14 mg patch/day	Weeks 7 and 8	STEP 3 use one 7 mg patch/day
----------------	-----------------------------------	---------------	-----------------------------------	---------------	----------------------------------

• apply one new patch every 24 hours on skin that is dry, clean and hairless
 • remove backing from patch and immediately press onto skin. Hold for 10 seconds.
 • wash hands after applying or removing patch. Throw away the patch in the enclosed disposal tray.
 • the used patch should be removed and a new one applied to a different skin site at the same time each day
 • if you have vivid dreams, you may remove the patch at bedtime and apply a new one in the morning
 • do not wear more than one patch at a time
 • do not cut patch in half or into smaller pieces
 • do not leave patch on for more than 24 hours because it may irritate your skin and loses strength after 24 hours
 • stop using the patch at the end of 8 weeks. If you still feel the need to use the patch talk to your doctor.

Other information • store at 20-25°C (68-77°F)

Inactive ingredients acrylate adhesive, aluminumized polyester, cotton viscose, methacrylic acid copolymer.

Comments or Questions? Call 1-800-885-8682 Weekdays (9am-8pm ET)

See front panel for lot number and expiration date.

Store Brand Name Nicotine Transdermal System PATCH Contains 21mg, 14mg or 7mg delivered over 24 hours STOP SMOKING AID KIT



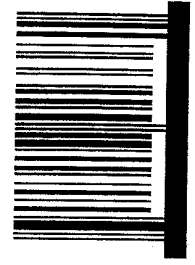
For your family's protection, patches are supplied in child-resistant pouches.
Do not use if individual pouch is open or torn. Carton shrink wrap is open or torn.
 protection. Do not use if shrink wrap is open or torn.

The use of this product is covered by U.S. Patent Nos. 4,597,961 and 5,834,011

Distributed by:
Novartis Consumer Health, Inc.
 Parsippany, NJ 07054-0622

©2002 00000A

- Not for sale to persons under 18 years of age.
- Proof of age required.
- Not for sale in vending machines or from any source where proof of age cannot be verified.



**Store Brand Name
 Nicotine Transdermal System
 PATCH**
 Contains 21mg, 14mg or 7mg
 delivered over 24 hours
STOP SMOKING AID KIT

OPEN HERE

AREA FOR LOT/EXP
 1-1/2 X 1/2

**Nicotine Transdermal System
PATCH**
Contains 21mg, 14mg or 7mg
delivered over 24 hours
STOP SMOKING AID KIT

TO INCREASE YOUR SUCCESS IN QUITTING:

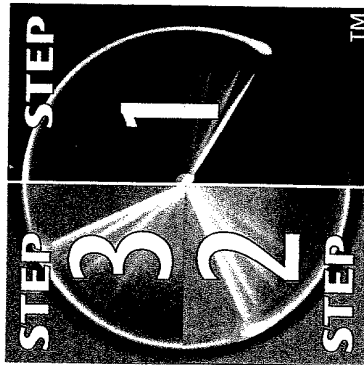
1. You must be motivated to quit.
2. Use one patch daily according to directions.
3. Complete the full treatment program.
4. Do not use patch for more than 8 weeks.
5. Use patch with a behavioral support program, such as the one described in the enclosed booklet and on the compact disc.

**Nicotine Transdermal System
PATCH**
Contains 21mg, 14mg or 7mg
delivered over 24 hours
STOP SMOKING AID KIT

NDC 0000-0000-00



INCLUDES ALL 3 STEPS



STEP 1

21mg delivered over 24 hours
Contains 28 Patches (4 week supply)

STEP 2

14mg delivered over 24 hours
Contains 14 Patches (2 week supply)

STEP 3

7mg delivered over 24 hours
Contains 14 Patches (2 week supply)

with
**Behavior
Support
Program**



Compact disc, self-help
guide, and disposal tray included.

**56
PATCHES**

COMPLETE STOP SMOKING AID KIT – USE **ONLY** IF YOU SMOKE **MORE** THAN 10 CIGARETTES PER DAY

K519D

**Nicotine Transdermal System
 PATCH** Contains 21mg, 14mg or 7mg
 delivered over 24 hours
STOP SMOKING AID KIT



**Nicotine Transdermal System
 PATCH** Contains 21mg, 14mg or 7mg
 delivered over 24 hours
STOP SMOKING AID KIT



For your family's protection, patches are supplied in child-resistant pouches.
Do not use if individual pouch is open or torn. Carton shrink wrapped for your protection. Do not use if shrink wrap is open or torn.

The use of this product is covered by U.S. Patent Nos. 4,597,961 and 5,894,011

Distributed by:
Novartis Consumer Health, Inc.
 Parsippany, NJ 07054-0622



©2002 00000A

Not for sale to persons under 18 years of age.
 Not for sale to persons under 18 years of age.
 Not for sale to persons under 18 years of age.
 Not for sale to persons under 18 years of age.

**Nicotine Transdermal System
 PATCH** Contains 21mg, 14mg or 7mg
 delivered over 24 hours
STOP SMOKING AID KIT

OPEN HERE

AREA FOR LOT/EXP
 1-1/2 X 1/2

14³/₈

10³/₄

V.2

Drug Facts

Active ingredient (in each patch)
 Nicotine, 21 mg delivered over 24 hours
 Nicotine, 14 mg delivered over 24 hours
 Nicotine, 7 mg delivered over 24 hours

Use reduces withdrawal symptoms, including nicotine craving, associated with quitting smoking

Warnings
 If you are pregnant or breast-feeding, only use this medicine on the advice of your health care provider. Smoking can seriously harm your child. Try to stop smoking before you become pregnant. This medicine is believed to be safer than smoking. However, the risks to your child from this medicine are not fully known.
 Do not use if you continue to smoke, chew tobacco, use snuff, use nicotine gum, or use nicotine patch or other nicotine containing products
 Do not use if you have:
 • heart disease
 • high blood pressure not controlled with medication
 • an allergy to adhesive tape or have skin problems, because you are more likely to get rashes.
 Ask a doctor or pharmacist before use if you are:
 • taking a non-nicotine stop smoking drug
 • taking a non-nicotine stop smoking drug
 • taking a medicine for depression or asthma. Your prescription dose may need to be adjusted.
 When taking this product, do not wear the patch. The nicotine in your skin will still be entering your bloodstream for several hours after you take off the patch.
 If you have vivid dreams or other sleep disturbances remove this patch at bedtime
 If you use and ask a doctor if:
 • you have irregular heartbeats, or if your skin swells, or you get a rash
 • you get symptoms of nicotine overdose, such as nausea, vomiting, dizziness, weakness and rapid heartbeat
 Keep out of reach of children and pets. Used patches have enough nicotine to poison a child or pet. If swallowed, get medical help or contact a Poison Control Center right away. Discard used patches using the enclosed disposal bag.

Directions

- If you are under 18 years of age, ask a doctor before use
 - Before using this product, read the enclosed self-help guide for complete directions and other information.
 - If you smoke more than 10 cigarettes per day, use the following schedule below:
- | Weeks 1-3 | Weeks 4-6 | Weeks 7-8 |
|------------------------------------|------------------------------------|-----------------------------------|
| STEP 1
uses one 21 mg patch/day | STEP 2
uses one 14 mg patch/day | STEP 3
uses one 7 mg patch/day |
- apply one new patch every 24 hours on skin that is clean and hairless
 - remove backing from patch and immediately press onto skin
 - wash hands after applying or removing patch. Throw away the patch in the enclosed disposal bag.
 - If your used patch should be removed and a new one applied to a different skin site at the same time each day
 - do not wear more than one patch; remove the patch at bedtime and apply a new one in the morning
 - do not cut patch in half or into smaller pieces
 - do not leave patch on for more than 24 hours because it may irritate your skin and loses strength after 24 hours
 - stop using the patch at the end of 8 weeks. If you still feel the need to use the patch talk to your doctor.

Other information • store at 20-25°C (68-77°F)

Inactive ingredients acrylate adhesive, aluminumized polyester, cotton viscose, methacrylic acid copolymer.

Comments or Questions? call 1-800-586-8882 Weekdays (9am-8pm ET)

See front panel for lot number and expiration date.



**Nicotine Transdermal System
 PATCH** Contains 21mg, 14mg or 7mg
 delivered over 24 hours
STOP SMOKING AID KIT

Nicotine Transdermal System
PATCH 21 mg delivered over 24 hours
STOP SMOKING AID
21mg

DO NOT OPEN POUCH UNTIL READY TO USE.

DIRECTIONS: Apply one patch to a dry, clean, hairless portion of upper body or arms. Refer to Self-Help Guide for detailed directions.

DO NOT CUT PATCH. KEEP OUT OF REACH OF CHILDREN AND PETS. Used patches have enough nicotine to poison children and pets. If swallowed, get medical help or contact a Poison Control Center right away. Throw away used patches using the enclosed disposal tray.

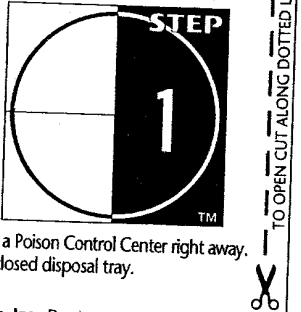
Store at 20-25°C (68-77°F).

Distributed by: **Novartis Consumer Health, Inc.**, Parsippany, NJ 07054-0622

DO NOT USE IF INDIVIDUAL POUCH IS OPEN OR TORN, OR IF PATCH IS CUT.

EXP LOT

28016C



**This is a representation of an electronic record that was signed electronically and
this page is the manifestation of the electronic signature.**

/s/

Linda Katz
7/12/02 03:25:59 PM