



Drug Facts

Active ingredient (in each caplet)
 Naproxen sodium 220 mg (naproxen 200 mg) (NSAID)*, Pain reliever/fever reducer
 *nonsteroidal anti-inflammatory drug

Purposes

- temporarily relieves minor aches and pains due to:
 - minor pain of arthritis
 - backache
 - headache
 - the common cold
 - temporarily reduces fever
 - muscular aches
 - menstrual cramps
 - toothache

Uses

- temporarily relieves minor aches and pains due to:
 - minor pain of arthritis
 - backache
 - headache
 - the common cold
 - temporarily reduces fever
 - muscular aches
 - menstrual cramps
 - toothache

Warnings

Allergy alert: Naproxen sodium may cause a severe allergic reaction, especially in people allergic to aspirin. Symptoms may include:

- hives
- swelling of the face, lips, tongue, or throat
- difficulty breathing
- itching
- skin redness
- stomach pain
- diarrhea
- nausea
- vomiting
- blistering
- itching

Stomach bleeding warning: This product contains an NSAID, which may cause severe stomach bleeding. The chance is higher if you:

- are age 60 or older
- have had stomach ulcers or bleeding problems
- take a blood thinning (anticoagulant) or steroid drug
- take other drugs containing prescription or nonprescription NSAIDs (aspirin, ibuprofen, naproxen or others)
- have 3 or more alcoholic drinks every day while using this product
- take more or for a longer time than directed

Drug Facts (continued)

Do not use

- if you have ever had an allergic reaction to any other pain reliever/fever reducer
- right before or after heart surgery

Ask a doctor before use if

- the stomach bleeding warning applies to you
- you have a history of stomach problems, such as heartburn
- you have high blood pressure, heart disease, liver cirrhosis, or kidney disease
- you are taking a diuretic
- you have problems or serious side effects from taking pain relievers or fever reducers
- you have asthma

Ask a doctor or pharmacist before use if you are

- under a doctor's care for any serious condition
- taking any other drug

When using this product

- take with food or milk if stomach upset occurs
- the risk of heart attack or stroke may increase if you use more than directed or for longer than directed

Stop use and ask a doctor if

- you experience any of the following signs of stomach bleeding:
 - feel faint
 - have bloody or black stools
 - have stomach pain that does not get better
 - pain gets worse or lasts more than 10 days
 - fever gets worse or lasts more than 3 days
 - you have difficulty swallowing
 - it feels like the pill is stuck in your throat
 - redness or swelling is present in the painful area
 - any new symptoms appear

If pregnant or breast-feeding, ask a health professional before use. It is especially important not to use naproxen sodium during the last 3 months of pregnancy unless definitely directed to do so by a doctor because it may cause problems in the unborn child or complications during delivery.

Keep out of reach of children. In case of overdose, get medical help or contact a Poison Control Center right away.

Drug Facts (continued)

Directions

- do not take more than directed
- the smallest effective dose should be used
- drink a full glass of water with each dose

Adults and children 12 years and older

- take 1 caplet every 8 to 12 hours while symptoms last
- for the first dose you may take 2 caplets within the first hour
- do not exceed 2 caplets in any 8- to 12-hour period
- do not exceed 3 caplets in a 24-hour period

Children under 12 years

- ask a doctor

Other information

- each caplet contains: sodium 20 mg
- store at 20-25°C (68-77°F). Avoid high humidity and excessive heat above 40°C (104°F).

Inactive ingredients FD&C blue #2 lake, hypromellose, magnesium stearate, microcrystalline cellulose, polyethylene glycol, povidone, talc, titanium dioxide

Questions or comments?
 1-800-395-0689 (Mon-Fri 9AM - 5PM EST) or www.aleve.com

Bayer

84065928

2857

Four Color Print Control

Do not use if carton is open or if foil seal imprinted with "SAFETY SQUEASE" on bottle opening is missing or broken.

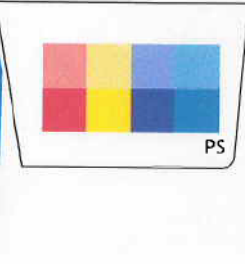
Bayer HealthCare LLC
 Consumer Care
 P.O. Box 1011
 Morrisville, NJ 07962-1910 USA
MADE IN GERMANY

SafetySquease is a registered trademark of The Procter & Gamble Company. Used with permission.

LOT

EXP

LOT & EXP CODE AREA





Actual Size 100%

30 FREE TABLETS

30 ALEVE®

naproxen sodium tablets, 220 mg (NSAID)
Pain reliever/fever reducer

ALL DAY STRONG®

STRENGTH TO LAST 12 HOURS

130 TABLETS

Bayer

Bayer, the Bayer Cross, Aleve and All Day Strong are registered trademarks of Bayer.

F.P.O. 100% U.P.C.

7 25866 51256 3

Drug Facts

Active ingredient (in each tablet)
Naproxen sodium 220 mg (naproxen 200 mg) (NSAID)*.....Pain reliever/fever reducer
*nonsteroidal anti-inflammatory drug

Purposes

- temporarily relieves minor aches and pains due to:
 - minor pain of arthritis
 - backache
 - headache
 - the common cold
 - temporarily reduces fever
- muscular aches
- menstrual cramps
- toothache

Warnings

Allergy alert: Naproxen sodium may cause a severe allergic reaction, especially in people allergic to aspirin. Symptoms may include:

- hives
- asthma (wheezing)
- skin reddening
- blisters
- facial swelling
- shock
- rash

If an allergic reaction occurs, stop use and seek medical help right away.

Stomach bleeding warning: This product contains an NSAID, which may cause severe stomach bleeding. The chance is higher if you:

- are age 60 or older
- have had stomach ulcers or bleeding problems
- take a blood thinning (anticoagulant) or steroid drug
- take other drugs containing prescription or nonprescription NSAIDs (aspirin, ibuprofen, naproxen, or others)
- have 3 or more alcoholic drinks every day while using this product
- take more or for a longer time than directed

Drug Facts (continued)

Do not use

- if you have ever had an allergic reaction to any other pain reliever/fever reducer
- right before or after heart surgery

Ask a doctor before use if

- the stomach bleeding warning applies to you
- you have a history of stomach problems, such as heartburn
- you have high blood pressure, heart disease, liver cirrhosis, or kidney disease
- you are taking a diuretic
- you have problems or serious side effects from taking pain relievers or fever reducers
- you have asthma

Ask a doctor or pharmacist before use if you are

- under a doctor's care for any serious condition
- taking any other drug

When using this product

- take with food or milk if stomach upset occurs
- the risk of heart attack or stroke may increase if you use more than directed or for longer than directed

Stop use and ask a doctor if

- you experience any of the following signs of stomach bleeding:
 - feel faint
 - have bloody or black stools
 - have stomach pain that does not get better
 - pain gets worse or lasts more than 10 days
 - fever gets worse or lasts more than 3 days
 - you have difficulty swallowing
 - it feels like the pill is stuck in your throat
 - redness or swelling is present in the painful area
 - any new symptoms appear

If pregnant or breast-feeding, ask a health professional before use. It is especially important not to use naproxen sodium during the last 3 months of pregnancy unless definitely directed to do so by a doctor because it may cause problems in the unborn child or complications during delivery.

Keep out of reach of children. In case of overdose, get medical help or contact a Poison Control Center right away.

84066979

2858

Bayer HealthCare LLC
Consumer Care
P.O. Box 1910
Monticello, NJ 07962-1910 USA
MADE IN GERMANY

Do not use if carton is open or if foil seal imprinted with "SAFETY SQUEASE" on bottle opening is missing or broken.

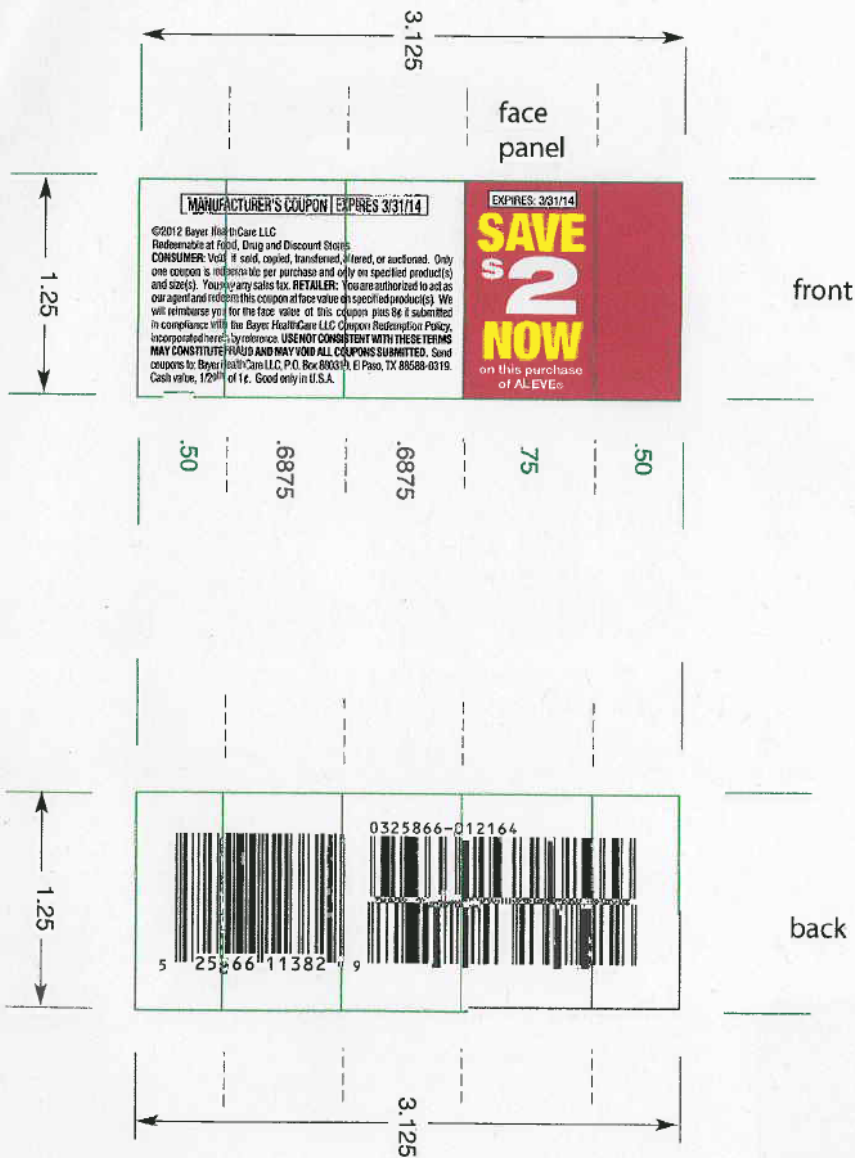
Bayer HealthCare LLC
Consumer Care
P.O. Box 1910
Monticello, NJ 07962-1910 USA
MADE IN GERMANY

LOT

EXP

LOT & EXP CODE AREA

200ctCaps_ \$2_IRC_vers3



Factory Applied Aleve 200ct Caplets \$2.00 IRC Instruction Sheet



PLACE
IRC
HERE

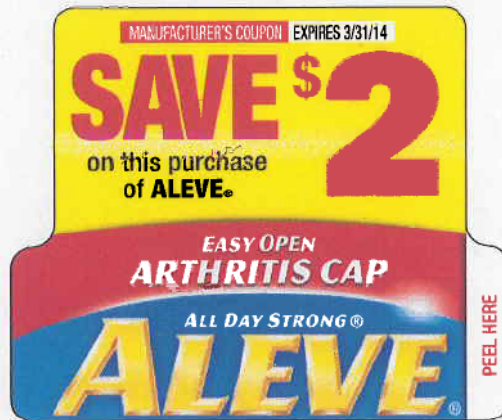


Place IRC in upper right corner on the front of the
Aleve 200ct. Caplets carton.

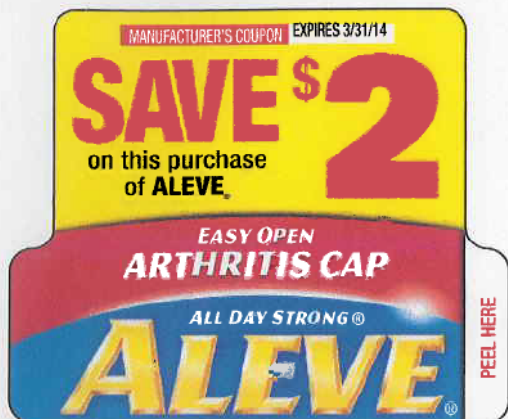
Wrap clear adhesive on right side of IRC around the
right side of the carton. Do not cover any text.

IRC for 200ct Arthritis Tab_ \$2 vers2

Front



Factory Applied Aleve 200ct Tablets Bottle \$2.00 IRC Instruction Sheet



Place IRC on the face of 200ct. Aleve Tablets bottle. Wrap left and right edges around both sides.

Bottom edge of IRC covers Aleve logo on label.

DO NOT cover statement of identity on the bottle label with the IRC.

PLACE
IRC
HERE



15 FREE CAPLETS WITH THIS PURCHASE

ALEVE

naproxen sodium
Pain reliever/fever reducer

65
STRENGTH TO LAST 12 HOURS

PS

Bayer HealthCare LLC
PO Box 910
Morrow, NJ 07058 USA
MADE IN GERMANY

Safely Separate is a registered trademark of The Procter & Gamble Company. Used with permission.
Bayer

Drug Facts (continued)

● Precipitous or breast-feeding, ask a health professional before use. It is especially important not to use naproxen sodium during the last 3 months of pregnancy unless definitely directed to do so by a doctor because it may cause problems in the unborn child or complications during delivery. Keep out of reach of children. In case of overdose, get medical help or contact a Poison Control Center right away.

Directions

- do not take more than directed
- the smallest effective dose should be used
- drink a full glass of water w/ each dose

Adults and children 12 years and older

- take 1 caplet every 6 to 12 hours while symptoms last
- for the first dose you may take 2 caplets within the first hour
- do not exceed 2 caplets in any 8- to 12-hour period
- do not exceed 3 caplets in a 24-hour period
- ask a doctor

Children under 12 years

Other information

- each caplet contains: sodium 20 mg
- store at 20-25°C (68-77°F). Avoid high humidity and excessive heat above 40°C (104°F).

Inactive ingredients FD&C blue #2 lake, hypromellose, magnesium stearate, microcrystalline cellulose, polyethylene glycol, povidone, talc, titanium dioxide

81478716

FOR PROFESSIONAL USE ONLY
2918

Drug Facts (continued)

- have 3 or more alcoholic drinks every day while using this product
- take more or for a longer time than directed

Do not use if you have ever had an allergic reaction to any other pain reliever/fever reducer

- right before or after heart surgery

Ask a doctor before use if

- the stomach bleeding warning applies to you
- you have a history of stomach problems, such as heartburn
- you have high blood pressure, heart disease, liver disease, or kidney disease
- you are taking a diuretic
- you have problems or serious side effects from taking pain relievers or fever reducers
- you have asthma

Ask a doctor or pharmacist before use if you are under a doctor's care for any serious condition or taking any other drug

When using this product

- take with food or milk if stomach upset occurs
- the risk of heart attack or stroke may increase if you use more than directed or for longer than directed

Stop use and ask a doctor if

- you experience any of the following signs of stomach bleeding:
 - feel faint
 - vomit blood
 - have bloody or black stools
- pain gets worse or lasts more than 10 days
- fever gets worse or lasts more than 3 days
- you have difficulty swallowing
- it feels like the pill is stuck in your throat
- sores or swelling is present in the painful area
- any new symptoms appear

Drug Facts

Active ingredient (in each caplet)
 Naproxen sodium 220 mg (naproxen 200 mg) (NSAID)¹, Pain reliever/fever reducer
 Nonsteroidal anti-inflammatory drug

Uses

- temporarily relieves minor aches and pains due to:
 - minor pain of arthritis
 - muscular aches
 - headache
 - toothache
 - the common cold
- temporarily reduces fever

Warnings

Allergy alert: Naproxen sodium may cause a severe allergic reaction, especially in people allergic to aspirin. Symptoms may include:

- hives
- swelling (face, lips, throat)
- wheezing
- skin rash
- dizziness
- blisters

If an allergic reaction occurs, stop use and seek medical help right away. This product contains an NSAID, which may cause severe stomach bleeding. The chance is higher if you: are age 65 or older; are taking aspirin, blood thinning drugs, or other drugs that increase the risk of bleeding; have had stomach ulcers or bleeding problems; take a blood thinning (anticoagulant) or steroid drug; or take other containing prescription or nonprescription NSAIDs (aspirin, ibuprofen, naproxen, or others).

LOT & EXP CODE AREA

LOT

EXP

Bayer HealthCare LLC
PO Box 910
Morrow, NJ 07058 USA
MADE IN GERMANY

Safely Separate is a registered trademark of The Procter & Gamble Company. Used with permission.
Bayer

Drug Facts (continued)

- have 3 or more alcoholic drinks every day while using this product
- take more or for a longer time than directed

Do not use if you have ever had an allergic reaction to any other pain reliever/fever reducer

- right before or after heart surgery

Ask a doctor before use if

- the stomach bleeding warning applies to you
- you have a history of stomach problems, such as heartburn
- you have high blood pressure, heart disease, liver disease, or kidney disease
- you are taking a diuretic
- you have problems or serious side effects from taking pain relievers or fever reducers
- you have asthma

Ask a doctor or pharmacist before use if you are under a doctor's care for any serious condition or taking any other drug

When using this product

- take with food or milk if stomach upset occurs
- the risk of heart attack or stroke may increase if you use more than directed or for longer than directed

Stop use and ask a doctor if

- you experience any of the following signs of stomach bleeding:
 - feel faint
 - vomit blood
 - have bloody or black stools
- pain gets worse or lasts more than 10 days
- fever gets worse or lasts more than 3 days
- you have difficulty swallowing
- it feels like the pill is stuck in your throat
- sores or swelling is present in the painful area
- any new symptoms appear

LOT & EXP CODE AREA

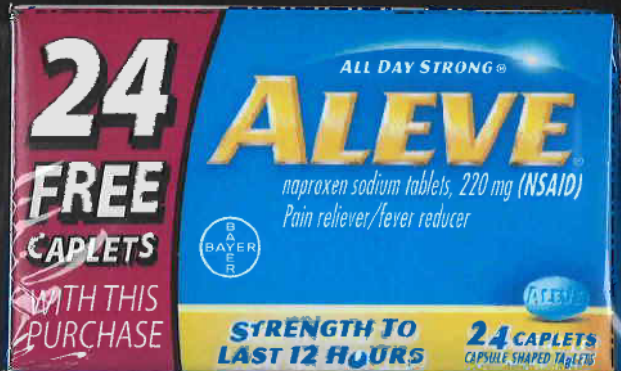
LOT

EXP

Actual Size 100%



(b) (4)





This is a representation of an electronic record that was signed electronically and this page is the manifestation of the electronic signature.

/s/

ANDREA LEONARD SEGAL
02/07/2013