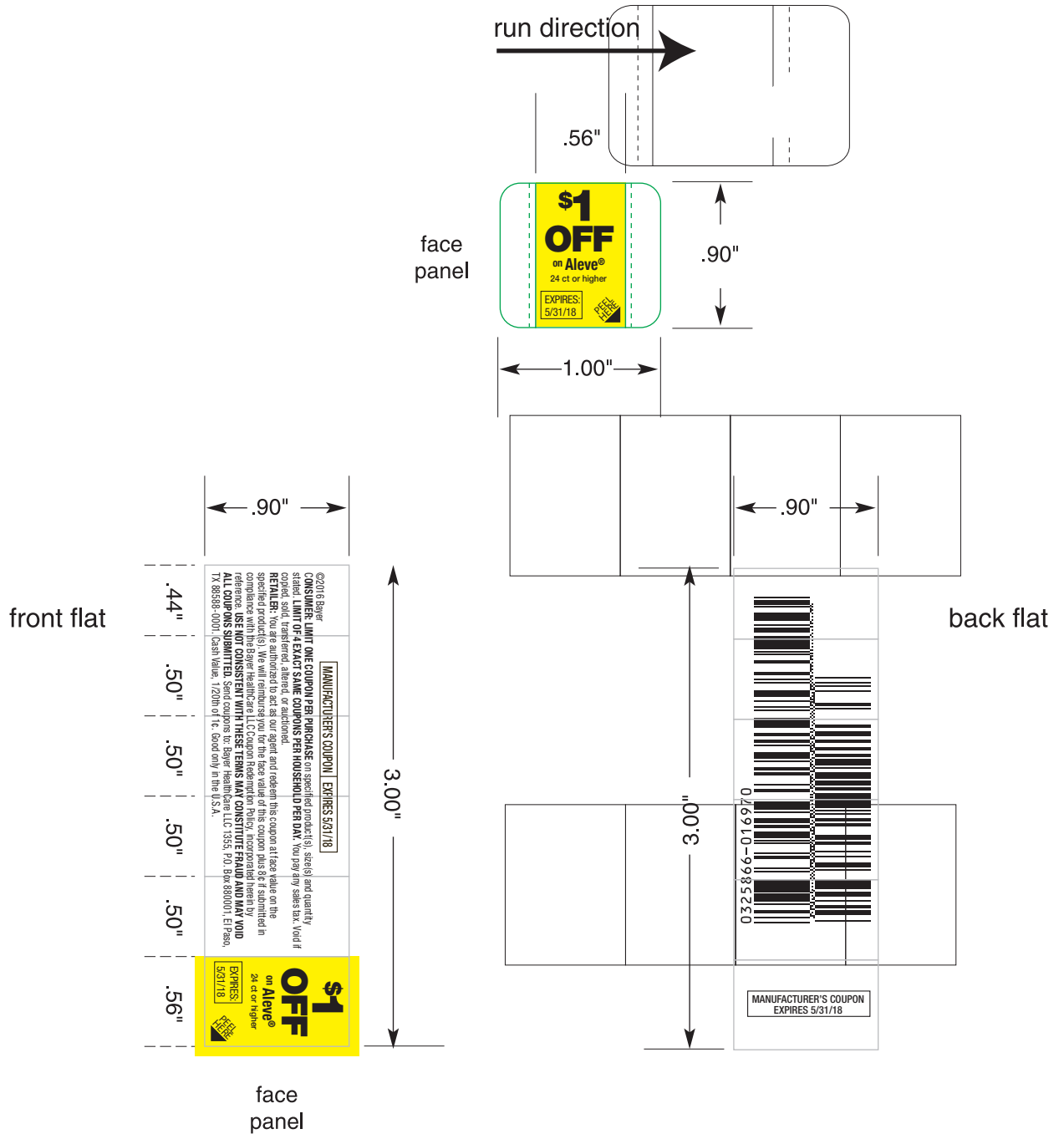
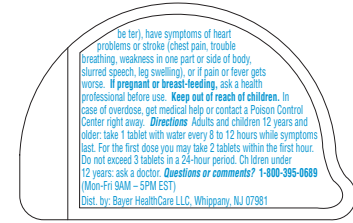
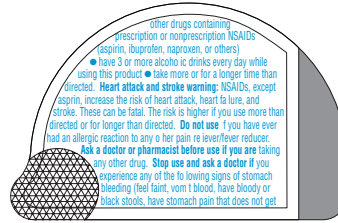
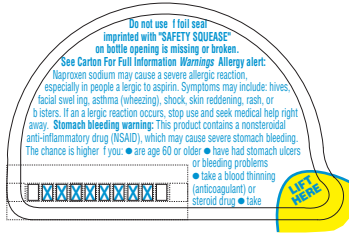


Carrier 1.00" x .90" (.125" corner radius)
 Face .56" x .90"
 Flat 3.00" x .56"





Actual Size 100%



Actual Size 100%

(b) (4)

CATEGORY	PRIMARY PACKAGING REQUIRED	SECONDARY PACKAGING REQUIRED	ACTUAL SIZE IN FILE
Drug Facts Title:	N/A	>8.0 pt	-
Drug Facts	N/A	8 pt	-
(continued):	N/A	8 pt	-
Headings:	N/A	8 pt	4.5 pt
Subheadings:	N/A	6 pt	4.5 pt
Text:	N/A	6 pt	4.5 pt
Bullets:	N/A	5 pt (no larger)	4 pt
Leading:	N/A	+0.5 pt	4.75 pt
Characters Per Inch:	N/A	No more than 39	>39



Drug Facts

Active ingredient **Purposes**
(In each tablet)
Naproxen sodium 220 mg
(Naproxen 200 mg) (NSAID) Pain reliever/
fever reducer
nonsteroidal anti-inflammatory drug

Uses

- temporarily relieves minor aches and pains due to:
 - muscular aches
 - backache
 - headache
 - the common cold
- temporarily reduces fever

Warnings

Allergy alert: Naproxen sodium may cause a severe allergic reaction, especially in people allergic to aspirin. Symptoms may include:

- hives
- asthma (wheezing)
- swallowing
- swollen tongue
- itching

If an allergic reaction occurs, stop use and seek medical help right away.

Stomach bleeding warning: This product contains an NSAID, which may cause severe stomach bleeding. The chance is higher if you:

- are age 60 or older
- have had stomach ulcers or bleeding problems
- take a blood thinning (anticoagulant) or steroid drug
- take other drugs containing prescription or nonprescription NSAIDs (aspirin, ibuprofen, naproxen, or others)



Bayer
Made in

Lot
Exp

Safety Source is a registered
Bayer-HealthCare LLC
Whippany, NJ 07881
Company. Used with permission.

Bayer, the Bayer Cross, Aleve and All Day Strong are registered trademarks of Bayer.

Drug Facts (continued)

- have 3 or more alcoholic drinks every day while using this product
- take more or for a longer time than directed
- Heart attack and stroke warning:** NSAIDs, except aspirin, increase the risk of heart attack, heart failure, and stroke. These can be fatal. The risk is higher if you use more than directed or for longer than directed.

Do not use

- if you have ever had an allergic reaction to any other pain reliever/fever reducer
- right before or after heart surgery

Ask a doctor before use if

- the stomach bleeding warning applies to you
- you have a history of stomach problems, such as heartburn
- you have high blood pressure, heart disease, liver cirrhosis, kidney disease, asthma, or had a stroke
- you are taking a diuretic
- you have problems or serious side effects from taking pain relievers or fever reducers

Ask a doctor or pharmacist before use if you are

- under a doctor's care for any serious condition
- taking any other drug

When using this product

- take with food or milk if stomach upset occurs

Stop use and ask a doctor if

- you experience any of the following signs of stomach bleed ing:
 - bleat
 - vomit blood
 - have bloody or black stools
 - have stomach pain that does not get better
 - you have symptoms of heart problems or stroke:
 - chest pain
 - trouble breathing
 - weakness in one part or side of body
 - slurred speech
 - leg swelling
 - pain gets worse or lasts more than 10 days
 - fever gets worse or lasts more than 3 days
 - you have difficulty swallowing
 - it feels like the pill is stuck in your throat
 - redness or swelling is present in the painful area
 - any new symptoms appear

XXXXXXX

0000

Drug Facts (continued)

If pregnant or breast-feeding, ask a health professional before use. It is especially important not to use naproxen sodium during the last 3 months of pregnancy unless definitely directed to do so by a doctor because it may cause problems in the unborn child or complications during delivery. **Keep out of reach of children.** In case of overdose, get medical help or contact a Poison Control Center right away.

Directions

- do not take more than directed
- the smallest effective dose should be used
- drink a full glass of water with each dose

Adults and children 12 years and older

- take 1 tablet every 8 to 12 hours while symptoms last
- for the first dose you may take 2 tablets within the first hour
- do not exceed 2 tablets in any 8- to 12-hour period
- do not exceed 3 tablets in a 24-hour period

Children under 12 years

- ask a doctor

Other information

- each tablet contains: sodium 20 mg
- store at 20-25°C (68-77°F). Avoid high humidity and excessive heat above 40°C (104°F).

Inactive ingredients FD&C blue #2 lake, hypromellose, magnesium stearate, microcrystalline cellulose, polyethylene glycol, povidone, talc, titanium dioxide

Drug Facts (continued)

Questions or comments? 1-800-395-0699
(Mon-Fri 9AM - 5PM EST)

Do not use if carton is open or if foil seal imprinted with **SAFETY SOURCE** on bottle opening is missing or broken.

3 25866 10503 5

ALL DAY STRONG®

ALEVE®

naproxen sodium tablets, 220 mg (NSAID)
Pain reliever/fever reducer

STRENGTH TO LAST 12 HOURS 50 TABLETS

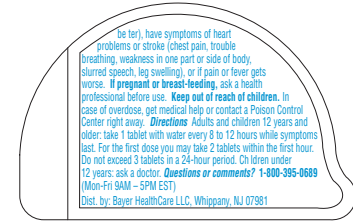
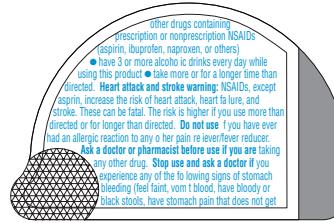
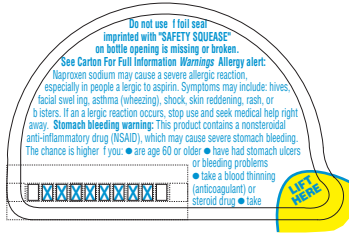
Actual Size 100%

(b) (4)

CATEGORY	PRIMARY PACKAGING REQUIRED	SECONDARY PACKAGING REQUIRED	ACTUAL SIZE IN FILE
Drug Facts Title:	N/A	>8.0 pt	8.1 pt
Drug Facts (continued):	N/A	8 pt	8 pt
Headings:	N/A	8 pt	8 pt
Subheadings:	N/A	6 pt	6 pt
Text:	N/A	6 pt	6 pt
Bullets:	N/A	5 pt (no larger)	5 pt
Leading:	N/A	+0.5 pt	6-6.5 pt
Characters Per Inch:	N/A	No more than 39	≤ 39




Actual Size 100%




Actual Size 100%

(b) (4)

CATEGORY	PRIMARY PACKAGING REQUIRED	SECONDARY PACKAGING REQUIRED	ACTUAL SIZE IN FILE
Drug Facts Title:	N/A	>8.0 pt	-
Drug Facts	N/A	8 pt	-
(continued):	N/A	8 pt	-
Headings:	N/A	8 pt	4.5 pt
Subheadings:	N/A	6 pt	4.5 pt
Text:	N/A	6 pt	4.5 pt
Bullets:	N/A	5 pt (no larger)	4 pt
Leading:	N/A	+0.5 pt	4.75 pt
Characters Per Inch:	N/A	No more than 39	>39





Drug Facts

Active Ingredient (In each caplet):
Naproxen sodium, 220 mg (naproxen 200 mg) (NSAID) ... Pain reliever/fever reducer
*nonsteroidal anti-inflammatory drug

Uses

- temporarily relieves minor aches and pains due to:
 - minor pain of arthritis
 - muscular aches
 - backache
 - headache
 - the common cold
- temporarily reduces fever

Warnings

Alert: Naproxen sodium may cause a severe allergic reaction, especially in people allergic to aspirin. Symptoms may include:

- hives
- asthma (wheezing)
- skin redness
- blister
- facial swelling
- facial itching
- stomach pain
- itching
- rash

If an allergic reaction occurs, stop use and seek medical help right away.

Stomach bleeding warning: This product contains an NSAID, which may cause severe stomach bleeding. The chance is higher if you:

- are age 60 or older
- have had stomach ulcers or bleeding problems
- take a blood thinning (anticoagulant) or steroid drug
- take other drugs containing prescription ibuprofen, naproxen, or others
- have 3 or more alcoholic drinks every day while using this product
- take more or for a longer time than directed

Drug Facts (continued)

Heart attack and stroke warning: NSAIDs, except aspirin, increase the risk of heart attack, heart failure, and stroke. These can be fatal. The risk is higher if you use more than directed or for longer than directed.

Do not use

- if you have ever had an allergic reaction to any other pain reliever/fever reducer
- right before or after heart surgery

Ask a doctor before use if

- the stomach bleeding warning applies to you
- you have a history of stomach problems, such as heartburn
- you have high blood pressure, heart disease, liver cirrhosis, kidney disease, asthma, or had a stroke
- you are taking a diuretic
- you have problems or serious side effects from taking pain relievers or fever reducers

Ask a doctor or pharmacist before use if you are

- under a doctor's care for any serious condition
- taking any other drug

When using this product:

- take with food or milk if stomach upset occurs
- take with food or milk if stomach upset occurs


Stop use and ask a doctor if

- you experience any of the following signs of stomach bleeding:
 - feel faint
 - vomit blood
 - have bloody or black stools
 - have stomach pain that does not get better
- you have symptoms of heart problems or stroke:
 - chest pain
 - trouble breathing
 - weakness in one part or side of body
 - slurred speech
 - leg swelling
- pain gets worse or lasts more than 10 days
- fever gets worse or lasts more than 3 days
- you have difficulty swallowing
- it feels like the pill is stuck in your throat
- redness or swelling is present in the painful area
- any new symptoms appear

Drug Facts (continued)

Questions or comments? 1-800-395-0688
(Mon-Fri 9AM - 5PM EST)

Do not use if carton is open or if foil seal imprinted with SAFETY SQUARE on bottle opening is missing or broken.



Dist. by:
Bayer HealthCare LLC
Whippany, NJ 07981

Safety Square is a registered trademark of The Procter & Gamble Company. Used with permission.

Bayer, the Bayer Cross, Aleve and All Day Strong are registered trademarks of Bayer.

Lot
Exp

Made in

Drug Facts (continued)

If pregnant or breast-feeding, ask a health professional before use. It is especially important not to use naproxen sodium during the last 3 months of pregnancy unless definitely directed to do so by a doctor because it may cause problems in the unborn child or complications during delivery. **Keep out of reach of children.** In case of overdose, get medical help or contact a Poison Control Center right away.

Directions

- do not take more than directed
- the smallest effective dose should be used
- drink a full glass of water with each dose

Adults and children 12 years and older

- take 1 caplet every 8 to 12 hours while symptoms last
- for the first dose, you may take 2 caplets within the first hour
- do not exceed 2 caplets in any 8- to 12-hour period
- do not exceed 3 caplets in a 24-hour period

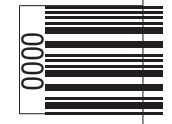
Children under 12 years

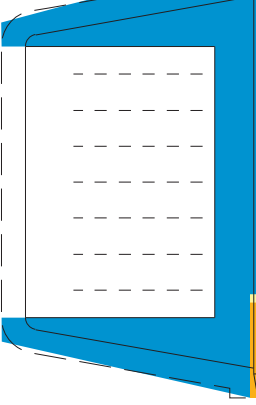
- ask a doctor

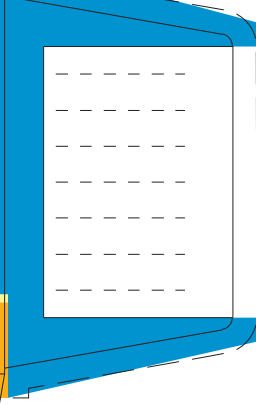
Other information

- each caplet contains: sodium 20 mg
- store at 20-25°C (68-77°F). Avoid high humidity and excessive heat above 40°C (104°F).

Inactive ingredients: FD&C Blue #2 lake, hypromellose, magnesium stearate, microcrystalline cellulose, polyethylene glycol, povidone, talc, titanium dioxide








ALL DAY STRONG®

ALEVE®

naproxen sodium tablets, 220 mg (NSAID)
Pain reliever/fever reducer



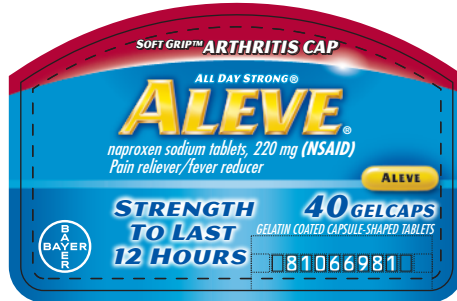
STRENGTH TO LAST 12 HOURS **50 CAPLETS**
CAPSULE-SHAPED TABLETS

Actual Size 100%

(b) (4)

CATEGORY	PRIMARY PACKAGING REQUIRED	SECONDARY PACKAGING REQUIRED	ACTUAL SIZE IN FILE
Drug Facts Title:	N/A	>8.0 pt	8.1 pt
Drug Facts (continued):	N/A	8 pt	8 pt
Headings:	N/A	8 pt	8 pt
Subheadings:	N/A	6 pt	6 pt
Text:	N/A	6 pt	6 pt
Bullets:	N/A	5 pt (no larger)	5 pt
Leading:	N/A	+0.5 pt	6-6.5 pt
Characters Per Inch:	N/A	No more than 39	≤ 39

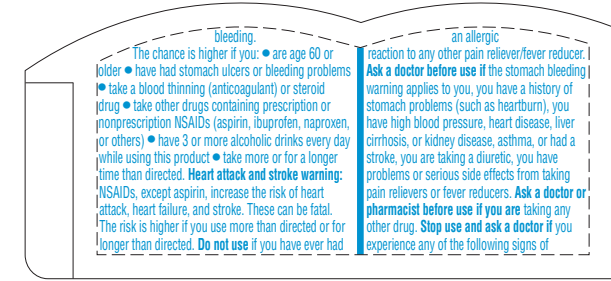
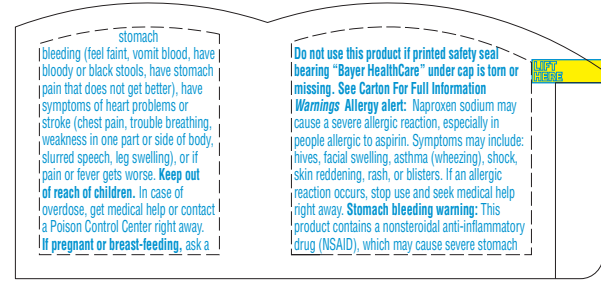
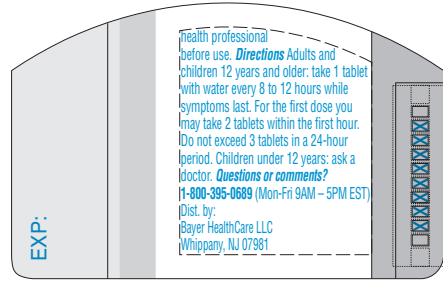
This label may not be the latest approved by FDA.
For current labeling information, please visit <https://www.fda.gov/drugsatfda>



Actual Size 100%

Reference ID: 4240156

This label may not be the latest approved by FDA.
 For current labeling information, please visit <https://www.fda.gov/drugsatfda>



Actual Size 100%

(b) (4)

Drug Facts Title:	N/A	>8.0 pt	-
Drug Facts	N/A	8 pt	-
(continued):	N/A	8 pt	-
Headings:	N/A	8 pt	-
Subheadings:	N/A	6 pt	6 pt
Text:	N/A	6 pt	6 pt
Bullets:	N/A	5 pt (no larger)	-
Leading:	N/A	+0.5 pt	6.5 pt
Characters Per Inch:	N/A	No more than 39	≤ 39

Actual Size 100%

(b) (4)

CATEGORY	PRIMARY PACKAGING REQUIRED	SECONDARY PACKAGING REQUIRED	ACTUAL SIZE IN FILE
Drug Facts Title:	N/A	>8.0 pt	8.1 pt
Drug Facts	N/A	8 pt	8 pt
(continued):	N/A	8 pt	8 pt
Headings:	N/A	8 pt	8 pt
Subheadings:	N/A	6 pt	6 pt
Text:	N/A	6 pt	6 pt
Bullets:	N/A	5 pt (no larger)	5 pt
Leading:	N/A	+0.5 pt	6.5 pt
Characters Per Inch:	N/A	No more than 39	≤ 39