

***Patient Information Leaflet***

Detach and give to Patient

Rev. XX/XX

*Patient Information Leaflet*

**Questions and Answers About Taxotere® for Injection Concentrate**

(generic name = docetaxel)

(pronounced as TAX-O-TEER)

---

***What is Taxotere?***

Taxotere is a medication to treat breast cancer and non-small cell lung cancer. It has severe side effects in some patients. This leaflet is designed to help you understand how to use Taxotere and avoid its side effects to the fullest extent possible. The more you understand your treatment, the better you will be able to participate in your care. If you have questions or concerns, be sure to ask your doctor or nurse. They are always your best source of information about your condition and treatment.

---

***What is the most important information about Taxotere?***

- Since this drug, like many other cancer drugs, affects your blood cells, your doctor will ask for routine blood tests. These will include regular checks of your white blood cell counts. People with low blood counts can develop life-threatening infections. The earliest sign of infection may be fever, so if you experience a fever, tell your doctor right away.
- Occasionally, serious allergic reactions have occurred with this medicine. If you have any allergies, tell your doctor before receiving this medicine.
- A small number of people who take Taxotere have severe fluid retention, which can be life-threatening. To help avoid this problem, you must take another medication called dexamethasone (DECKS-A-METH-A-SONE) prior to each Taxotere treatment. You must follow the schedule and take the exact dose of dexamethasone prescribed (see schedule at end of brochure). If you forget to take a dose or do not take it on schedule you must tell the doctor or nurse prior to your Taxotere treatment.
- If you are using any other medicines, tell your doctor before receiving your infusions of Taxotere.

---

***How does Taxotere work?***

Taxotere works by attacking cancer cells in your body. Different cancer medications attack cancer cells in different ways.

Here's how Taxotere works: Every cell in your body contains a supporting structure (like a skeleton). Damage to this "skeleton" can stop cell growth or reproduction. Taxotere makes the "skeleton" in some cancer cells very stiff, so that the cells can no longer grow.

---

***How will I receive Taxotere?***

Taxotere is given by an infusion directly into your vein. Your treatment will take about 1 hour. Generally, people receive Taxotere every 3 weeks. The amount of Taxotere and the frequency of your infusions will be determined by your doctor.

As part of your treatment, to reduce side effects your doctor will prescribe another medicine called dexamethasone. Your doctor will tell you how and when to take this medicine. It is important that you take the dexamethasone on the schedule set by your doctor. If you forget to take your medication, or do not take it on schedule, make sure to tell your doctor or nurse **BEFORE** you receive your Taxotere treatment. **Included with this information leaflet is a chart to help you remember when to take your dexamethasone.**

---

***What should be avoided while receiving Taxotere?***

Taxotere can interact with other medicines. Use only medicines that are prescribed for you by your doctor and **be sure** to tell your doctor all the medicines that you use, including nonprescription drugs.

---

***What are the possible side effects of Taxotere?***

**Low Blood Cell Count** – Many cancer medications, including Taxotere, cause a temporary drop in the number of white blood cells. These cells help protect your body from infection. Your doctor will routinely check your blood count and tell you if it is too low. Although most people receiving Taxotere do not have an infection even if they have a low white blood cell count, the risk of infection is increased.

**Fever is often one of the most common and earliest signs of infection. Your doctor will recommend that you take your temperature frequently, especially during the days after treatment with Taxotere. If you have a fever, tell your doctor or nurse immediately.**

**Allergic Reactions** – This type of reaction, which occurs during the infusion of Taxotere, is infrequent. If you feel a warm sensation, a tightness in your chest, or itching during or shortly after your treatment, tell your doctor or nurse immediately.

**Fluid Retention** – This means that your body is holding extra water. If this fluid retention is in the chest or around the heart it can be life-threatening. If you notice swelling in the feet and legs or a slight weight gain, this may be the first warning sign. Fluid retention usually does not start immediately; but, if it occurs, it may start around your 5th treatment. Generally, fluid retention will go away within weeks or months after your treatments are completed.

Dexamethasone tablets may protect patients from significant fluid retention. It is important that you take this medicine on schedule. If you have not taken dexamethasone on schedule, you must tell your doctor or nurse before receiving your next Taxotere treatment.

**Gastrointestinal** – Diarrhea has been associated with TAXOTERE use and can be severe in some patients. Nausea and/or vomiting are common in patients receiving TAXOTERE. Severe inflammation of the bowel can also occur in some patients and may be life threatening.

**Hair Loss** – Loss of hair occurs in most patients taking Taxotere (including the hair on your head, underarm hair, pubic hair, eyebrows, and eyelashes). Hair loss will begin after the first few treatments and varies from patient to patient. Once you have completed all your treatments, hair generally grows back.

Your doctor or nurse can refer you to a store that carries wigs, hairpieces, and turbans for patients with cancer.

**Fatigue** – A number of patients (about 10%) receiving Taxotere feel very tired following their treatments. If you feel tired or weak, allow yourself extra rest before your next treatment. If it is bothersome or lasts for longer than 1 week, inform your doctor or nurse.

**Muscle Pain** – This happens about 20% of the time, but is rarely severe. You may feel pain in your muscles or joints. Tell your doctor or nurse if this happens. They may suggest ways to make you more comfortable.

**Rash** – This side effect occurs commonly but is severe in about 5%. You may develop a rash that looks like a blotchy, hive-like reaction. This usually occurs on the hands and feet but may also appear on the arms, face, or body. Generally, it will appear between treatments and will go away before the next treatment. Inform your doctor or nurse if you experience a rash. They can help you avoid discomfort.

**Odd Sensations** – About half of patients getting Taxotere will feel numbness, tingling, or burning sensations in their hands and feet. If you do experience this, tell your doctor or nurse. Generally, these go away within a few weeks or months after your treatments are completed. About 14% of patients may also develop weakness in their hands and feet.

**Nail Changes** – Color changes to your fingernails or toenails may occur while taking Taxotere. In extreme, but rare, cases nails may fall off. After you have finished Taxotere treatments, your nails will generally grow back.

**Eye Changes** – Excessive tearing, which can be related to conjunctivitis or blockage of the tear ducts, may occur.

If you are interested in learning more about this drug, ask your doctor for a copy of the package insert.

**Aventis Pharmaceuticals Products Inc.**

Bridgewater, NJ 08807 USA

[www.aventispharma-us.com](http://www.aventispharma-us.com)

Rev. XX/XX

Date \_\_\_\_\_

**Day 1**

Start

Dexamethasone tablets

2 times per day

AM

PM

Date \_\_\_\_\_  
**Day 2**

**Taxotere  
Treatment Day**

Take  
Dexamethasone tablets  
2 times per day  
AM  
PM

Date \_\_\_\_\_  
**Day 3**

Take  
Dexamethasone tablets  
2 times per day  
AM  
PM

Prescribing Information as of

R<sub>x</sub> only  
**TAXOTERE**<sup>®</sup>  
(docetaxel)  
for Injection Concentrate

**WARNING**

TAXOTERE<sup>®</sup> (docetaxel) for Injection Concentrate should be administered under the supervision of a qualified physician experienced in the use of antineoplastic agents. Appropriate management of complications is possible only when adequate diagnostic and treatment facilities are readily available.

The incidence of treatment-related mortality associated with TAXOTERE therapy is increased in patients with abnormal liver function, in patients receiving higher doses, and in patients with non-small cell lung carcinoma and a history of prior treatment with platinum-based chemotherapy who receive TAXOTERE as a single agent at a dose of 100 mg/m<sup>2</sup> (see **WARNINGS**).

TAXOTERE should generally not be given to patients with bilirubin > upper limit of normal (ULN), or to patients with SGOT and/or SGPT >1.5 x ULN concomitant with alkaline phosphatase > 2.5 x ULN. Patients with elevations of bilirubin or abnormalities of transaminase concurrent with alkaline phosphatase are at increased risk for the development of grade 4 neutropenia, febrile neutropenia, infections, severe thrombocytopenia, severe stomatitis, severe skin toxicity, and toxic death. Patients with isolated elevations of transaminase > 1.5 x ULN also had a higher rate of febrile neutropenia grade 4 but did not have an increased incidence of toxic death. Bilirubin, SGOT or SGPT, and alkaline phosphatase values should be obtained prior to each cycle of TAXOTERE therapy and reviewed by the treating physician.

TAXOTERE therapy should not be given to patients with neutrophil counts of < 1500 cells/mm<sup>3</sup>. In order to monitor the occurrence of neutropenia, which may be severe and result in infection, frequent blood cell counts should be performed on all patients receiving TAXOTERE.

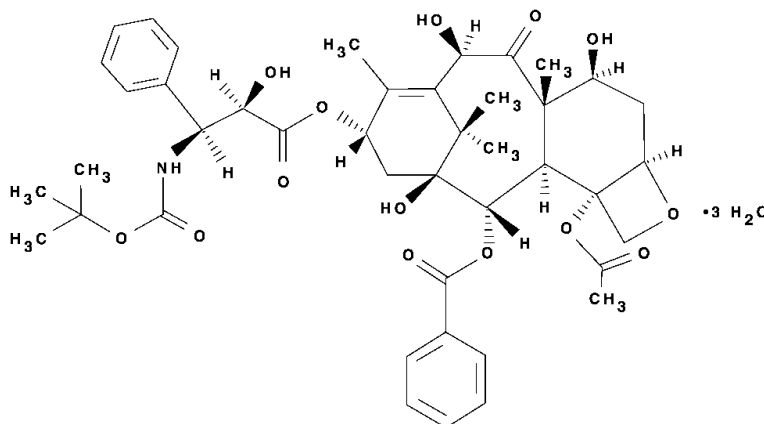
Severe hypersensitivity reactions characterized by hypotension and/or bronchospasm, or generalized rash/erythema occurred in 2.2% (2/92) of patients who received the recommended 3-day dexamethasone premedication. Hypersensitivity reactions requiring discontinuation of the TAXOTERE infusion were reported in five patients who did not receive premedication. These reactions resolved after discontinuation of the infusion and the administration of appropriate therapy. TAXOTERE must not be given to patients who have a history of severe hypersensitivity reactions to TAXOTERE or to other drugs formulated with polysorbate 80 (see **WARNINGS**).

Severe fluid retention occurred in 6.5% (6/92) of patients despite use of a 3-day dexamethasone premedication regimen. It was characterized by one or more of the following events: poorly tolerated peripheral edema, generalized edema, pleural effusion

requiring urgent drainage, dyspnea at rest, cardiac tamponade, or pronounced abdominal distention (due to ascites) (see **PRECAUTIONS**).

## DESCRIPTION

Docetaxel is an antineoplastic agent belonging to the taxoid family. It is prepared by semisynthesis beginning with a precursor extracted from the renewable needle biomass of yew plants. The chemical name for docetaxel is (2R,3S)-N-carboxy-3-phenylisoserine, N-*tert*-butyl ester, 13-ester with 5 $\beta$ -20-epoxy-1,2 $\alpha$ ,4,7 $\beta$ ,10 $\beta$ ,13 $\alpha$ -hexahydroxytax-11-en-9-one 4-acetate 2-benzoate, trihydrate. Docetaxel has the following structural formula:



Docetaxel is a white to almost-white powder with an empirical formula of  $C_{43}H_{53}NO_{14} \cdot 3H_2O$ , and a molecular weight of 861.9. It is highly lipophilic and practically insoluble in water.

TAXOTERE (docetaxel) for Injection Concentrate is a clear yellow to brownish-yellow viscous solution. TAXOTERE is sterile, non-pyrogenic, and is available in single-dose vials containing 20 mg (0.5 mL) or 80 mg (2.0 mL) docetaxel (anhydrous). Each mL contains 40 mg docetaxel (anhydrous) and 1040 mg polysorbate 80.

TAXOTERE for Injection Concentrate requires dilution prior to use. A sterile, non-pyrogenic, single-dose diluent is supplied for that purpose. The diluent for TAXOTERE contains 13% ethanol in Water for Injection, and is supplied in 1.5 mL (to be used with 20 mg TAXOTERE for Injection Concentrate) and 6.0 mL (to be used with 80 mg TAXOTERE for Injection Concentrate) vials.

## CLINICAL PHARMACOLOGY

Docetaxel is an antineoplastic agent that acts by disrupting the microtubular network in cells that is essential for mitotic and interphase cellular functions. Docetaxel binds to free tubulin and promotes the assembly of tubulin into stable microtubules while simultaneously inhibiting their disassembly. This leads to the production of microtubule bundles without normal function and to the stabilization of microtubules, which results in the inhibition of mitosis in cells. Docetaxel's binding to microtubules does not alter the number of protofilaments in the bound microtubules, a feature which differs from most spindle poisons currently in clinical use.

## HUMAN PHARMACOKINETICS

The pharmacokinetics of docetaxel have been evaluated in cancer patients after administration of 20-115  $mg/m^2$  in phase I studies. The area under the curve (AUC) was dose proportional following doses of 70-115  $mg/m^2$  with infusion times of 1 to 2 hours. Docetaxel's pharmacokinetic profile is consistent with a three-compartment pharmacokinetic model, with half-lives for the  $\alpha$ ,  $\beta$ , and  $\gamma$  phases of 4 min, 36 min, and 11.1 hr, respectively. The initial rapid

decline represents distribution to the peripheral compartments and the late (terminal) phase is due, in part, to a relatively slow efflux of docetaxel from the peripheral compartment. Mean values for total body clearance and steady state volume of distribution were 21 L/h/m<sup>2</sup> and 113 L, respectively. Mean total body clearance for Japanese patients dosed at the range of 10-90 mg/m<sup>2</sup> was similar to that of European/American populations dosed at 100 mg/m<sup>2</sup>, suggesting no significant difference in the elimination of docetaxel in the two populations.

A study of <sup>14</sup>C-docetaxel was conducted in three cancer patients. Docetaxel was eliminated in both the urine and feces following oxidative metabolism of the *tert*-butyl ester group, but fecal excretion was the main elimination route. Within 7 days, urinary and fecal excretion accounted for approximately 6% and 75% of the administered radioactivity, respectively. About 80% of the radioactivity recovered in feces is excreted during the first 48 hours as 1 major and 3 minor metabolites with very small amounts (less than 8%) of unchanged drug.

A population pharmacokinetic analysis was carried out after TAXOTERE treatment of 535 patients dosed at 100 mg/m<sup>2</sup>. Pharmacokinetic parameters estimated by this analysis were very close to those estimated from phase I studies. The pharmacokinetics of docetaxel were not influenced by age or gender and docetaxel total body clearance was not modified by pretreatment with dexamethasone. In patients with clinical chemistry data suggestive of mild to moderate liver function impairment (SGOT and/or SGPT >1.5 times the upper limit of normal [ULN] concomitant with alkaline phosphatase >2.5 times ULN), total body clearance was lowered by an average of 27%, resulting in a 38% increase in systemic exposure (AUC). This average, however, includes a substantial range and there is, at present, no measurement that would allow recommendation for dose adjustment in such patients. Patients with combined abnormalities of transaminase and alkaline phosphatase should, in general, not be treated with TAXOTERE. Clearance of docetaxel in combination therapy with cisplatin was similar to that previously observed following monotherapy with docetaxel. The pharmacokinetic profile of cisplatin in combination therapy with docetaxel was similar to that observed with cisplatin alone.

*In vitro* studies showed that docetaxel is about 94% protein bound, mainly to  $\alpha_1$ -acid glycoprotein, albumin, and lipoproteins. In three cancer patients, the *in vitro* binding to plasma proteins was found to be approximately 97%. Dexamethasone does not affect the protein binding of docetaxel.

*In vitro* drug interaction studies revealed that docetaxel is metabolized by the CYP3A4 isoenzyme, and its metabolism can be inhibited by CYP3A4 inhibitors, such as ketoconazole, erythromycin, troleandomycin, and nifedipine. Based on *in vitro* findings, it is likely that CYP3A4 inhibitors and/or substrates may lead to substantial increases in docetaxel blood concentrations. No clinical studies have been performed to evaluate this finding (see **PRECAUTIONS**).

## **CLINICAL STUDIES**

**Breast Cancer:** The efficacy and safety of TAXOTERE have been evaluated in locally advanced or metastatic breast cancer after failure of previous chemotherapy (alkylating agent-containing regimens or anthracycline-containing regimens), primarily at a dose of 100 mg/m<sup>2</sup> given as a 1-hour infusion every 3 weeks, but with some experience at 60 mg/m<sup>2</sup>, in two large randomized trials and a number of smaller single arm studies.

**Randomized Trials:** In one randomized trial, patients with a history of prior treatment with an anthracycline-containing regimen were assigned to treatment with TAXOTERE or the combination of mitomycin (12 mg/m<sup>2</sup> every 6 weeks) and vinblastine (6 mg/m<sup>2</sup> every 3 weeks).

203 patients were randomized to TAXOTERE and 189 to the comparator arm. Most patients had received prior chemotherapy for metastatic disease; only 27 patients on the TAXOTERE arm and 33 patients on the comparator arm entered the study following relapse after adjuvant therapy. Three-quarters of patients had measurable, visceral metastases. The primary endpoint was time to progression. The following table summarizes the study results:

**Efficacy of TAXOTERE in the Treatment of Breast Cancer Patients  
Previously Treated with an Anthracycline-Containing Regimen  
(Intent-to-Treat Analysis)**

<b>Efficacy Parameter</b>	<b>Docetaxel (n=203)</b>	<b>Mitomycin/ Vinblastine (n=189)</b>	<b>p-value</b>
Median Survival	11.4 months	8.7 months	p=0.01 Log Rank
Risk Ratio*, Mortality (Docetaxel: Control)	0.73		
95% CI (Risk Ratio)	0.58-0.93		
Median Time to Progression	4.3 months	2.5 months	p=0.01 Log Rank
Risk Ratio*, Progression (Docetaxel: Control)	0.75		
95% CI (Risk Ratio)	0.61-0.94		
Overall Response Rate	28.1%	9.5%	p<0.0001
Complete Response Rate	3.4%	1.6%	Chi Square

\*For the risk ratio, a value less than 1.00 favors docetaxel.

In a second randomized trial, patients previously treated with an alkylating-containing regimen were assigned to treatment with TAXOTERE or doxorubicin (75 mg/m<sup>2</sup> every 3 weeks). 161 patients were randomized to TAXOTERE and 165 patients to doxorubicin. Approximately one-half of patients had received prior chemotherapy for metastatic disease, and one-half entered the study following relapse after adjuvant therapy. Three-quarters of patients had measurable, visceral metastases. The primary endpoint was time to progression. The study results are summarized below:

**Efficacy of TAXOTERE in the Treatment of Breast Cancer Patients  
Previously Treated with an Alkylating-Containing Regimen  
(Intent-to-Treat Analysis)**

<b>Efficacy Parameter</b>	<b>Docetaxel (n=161)</b>	<b>Doxorubicin (n=165)</b>	<b>p-value</b>
Median Survival	14.7 months	14.3 months	p=0.39 Log Rank
Risk Ratio*, Mortality (Docetaxel: Control)	0.89		
95% CI (Risk Ratio)	0.68-1.16		
Median Time to Progression	6.5 months	5.3 months	p=0.45 Log Rank
Risk Ratio*, Progression (Docetaxel: Control)	0.93		
95% CI (Risk Ratio)	0.71-1.16		
Overall Response Rate	45.3%	29.7%	p=0.004 Chi Square
Complete Response Rate	6.8%	4.2%	

\*For the risk ratio, a value less than 1.00 favors docetaxel.

**Single Arm Studies:** TAXOTERE at a dose of 100 mg/m<sup>2</sup> was studied in six single arm studies involving a total of 309 patients with metastatic breast cancer in whom previous chemotherapy had failed. Among these, 190 patients had anthracycline-resistant breast cancer, defined as progression during an anthracycline-containing chemotherapy regimen for metastatic disease, or relapse during an anthracycline-containing adjuvant regimen. In anthracycline-resistant patients, the overall response rate was 37.9% (72/190; 95% C.I.: 31.0-44.8) and the complete response rate was 2.1%.

TAXOTERE was also studied in three single arm Japanese studies at a dose of 60 mg/m<sup>2</sup>, in 174 patients who had received prior chemotherapy for locally advanced or metastatic breast cancer. Among 26 patients whose best response to an anthracycline had been progression, the response rate was 34.6% (95% C.I.: 17.2-55.7), similar to the response rate in single arm studies of 100 mg/m<sup>2</sup>.

**Hematologic and Other Toxicity: Relation to dose and baseline liver chemistry abnormalities.** Hematologic and other toxicity is increased at higher doses and in patients with elevated baseline liver function tests (LFTs). In the following tables, adverse drug reactions are compared for three populations: 730 patients with normal LFTs given TAXOTERE at 100 mg/m<sup>2</sup> in the randomized and single arm studies of metastatic breast cancer after failure of previous chemotherapy; 18 patients in these studies who had abnormal baseline LFTs (defined as SGOT and/or SGPT > 1.5 times ULN concurrent with alkaline phosphatase > 2.5 times ULN); and 174 patients in Japanese studies given TAXOTERE at 60 mg/m<sup>2</sup> who had normal LFTs.

**Hematologic Adverse Events in Breast Cancer Patients  
Previously Treated with Chemotherapy  
Treated at TAXOTERE 100 mg/m<sup>2</sup> with Normal  
or Elevated Liver Function Tests or  
60 mg/m<sup>2</sup> with Normal Liver Function Tests**

Adverse Event	TAXOTERE 100 mg/m <sup>2</sup>		TAXOTERE 60 mg/m <sup>2</sup>
	Normal LFTs* n=730 %	Elevated LFTs** n=18 %	Normal LFTs* n=174 %
<b>Neutropenia</b>			
Any <2000 cells/mm <sup>3</sup>	98.4	100	95.4
Grade 4 <500 cells/mm <sup>3</sup>	84.4	93.8	74.9
<b>Thrombocytopenia</b>			
Any <100,000 cells/mm <sup>3</sup>	10.8	44.4	14.4
Grade 4 <20,000 cells/mm <sup>3</sup>	0.6	16.7	1.1
<b>Anemia</b> <11 g/dL	94.6	94.4	64.9
<b>Infection***</b>			
Any	22.5	38.9	1.1
Grade 3 and 4	7.1	33.3	0
<b>Febrile Neutropenia****</b>			
By Patient	11.8	33.3	0
By Course	2.4	8.6	0
<b>Septic Death</b>	1.5	5.6	1.1
<b>Non-Septic Death</b>	1.1	11.1	0

\*Normal Baseline LFTs: Transaminases  $\leq$  1.5 times ULN or alkaline phosphatase  $\leq$  2.5 times ULN or isolated elevations of transaminases or alkaline phosphatase up to 5 times ULN

\*\*Elevated Baseline LFTs: SGOT and/or SGPT >1.5 times ULN concurrent with alkaline phosphatase >2.5 times ULN

\*\*\*Incidence of infection requiring hospitalization and/or intravenous antibiotics was 8.5% (n=62) among the 730 patients with normal LFTs at baseline; 7 patients had concurrent grade 3 neutropenia, and 46 patients had grade 4 neutropenia.

\*\*\*\*Febrile Neutropenia: For 100 mg/m<sup>2</sup>, ANC grade 4 and fever > 38°C with IV antibiotics and/or hospitalization; for 60 mg/m<sup>2</sup>, ANC grade 3/4 and fever > 38.1°C

**Non-Hematologic Adverse Events in Breast Cancer Patients  
Previously Treated with Chemotherapy  
Treated at TAXOTERE 100 mg/m<sup>2</sup> with Normal or Elevated Liver Function Tests or  
60 mg/m<sup>2</sup> with Normal Liver Function Tests**

Adverse Event	TAXOTERE 100 mg/m <sup>2</sup>		TAXOTERE 60 mg/m <sup>2</sup>
	Normal LFTs* n=730 %	Elevated LFTs** n=18 %	Normal LFTs* n=174 %
<b>Acute Hypersensitivity Reaction Regardless of Premedication</b>			
Any	13.0	5.6	0.6
Severe	1.2	0	0
<b>Fluid Retention*** Regardless of Premedication</b>			
Any	56.2	61.1	12.6
Severe	7.9	16.7	0
<b>Neurosensory</b>			
Any	56.8	50	19.5
Severe	5.8	0	0
<b>Myalgia</b>	22.7	33.3	3.4
<b>Cutaneous</b>			
Any	44.8	61.1	30.5
Severe	4.8	16.7	0
<b>Asthenia</b>			
Any	65.2	44.4	65.5
Severe	16.6	22.2	0
<b>Diarrhea</b>			
Any	42.2	27.8	NA
Severe	6.3	11.1	
<b>Stomatitis</b>			
Any	53.3	66.7	19.0
Severe	7.8	38.9	0.6

\*Normal Baseline LFTs: Transaminases  $\leq$  1.5 times ULN or alkaline phosphatase  $\leq$  2.5 times ULN or isolated elevations of transaminases or alkaline phosphatase up to 5 times ULN

\*\*Elevated Baseline Liver Function: SGOT and/or SGPT >1.5 times ULN concurrent with alkaline phosphatase >2.5 times ULN

\*\*\*Fluid Retention includes (by COSTART): edema (peripheral, localized, generalized, lymphedema, pulmonary edema, and edema otherwise not specified) and effusion (pleural, pericardial, and ascites); no premedication given with the 60 mg/m<sup>2</sup> dose

NA = not available

**Non-Small Cell Lung Cancer (NSCLC):** The efficacy and safety of TAXOTERE has been evaluated in patients with unresectable, locally advanced or metastatic non-small cell lung cancer whose disease has failed prior platinum-based chemotherapy or in patients who are chemotherapy-naïve.

**Monotherapy with TAXOTERE for NSCLC Previously Treated with Platinum-based Chemotherapy**

Two randomized, controlled trials established that a TAXOTERE dose of 75 mg/m<sup>2</sup> was tolerable and yielded a favorable outcome in patients previously treated with platinum-based chemotherapy (see below). TAXOTERE at a dose of 100 mg/m<sup>2</sup>, however, was associated with unacceptable hematologic toxicity, infections, and treatment-related mortality and this dose should not be used (see **BOXED WARNING, WARNINGS, and DOSAGE AND ADMINISTRATION** sections).

One trial (TAX317), randomized patients with locally advanced or metastatic non-small cell lung cancer, a history of prior platinum-based chemotherapy, no history of taxane exposure, and an ECOG performance status ≤2 to TAXOTERE or best supportive care. The primary endpoint of the study was survival. Patients were initially randomized to TAXOTERE 100 mg/m<sup>2</sup> or best supportive care, but early toxic deaths at this dose led to a dose reduction to TAXOTERE 75 mg/m<sup>2</sup>. A total of 104 patients were randomized in this amended study to either TAXOTERE 75 mg/m<sup>2</sup> or best supportive care.

In a second randomized trial (TAX320), 373 patients with locally advanced or metastatic non-small cell lung cancer, a history of prior platinum-based chemotherapy, and an ECOG performance status ≤2 were randomized to TAXOTERE 75 mg/m<sup>2</sup>, TAXOTERE 100 mg/m<sup>2</sup> and a treatment in which the investigator chose either vinorelbine 30 mg/m<sup>2</sup> days 1, 8, and 15 repeated every 3 weeks **or** ifosfamide 2 g/m<sup>2</sup> days 1-3 repeated every 3 weeks. Forty percent of the patients in this study had a history of prior paclitaxel exposure. The primary endpoint was survival in both trials. The efficacy data for the TAXOTERE 75 mg/m<sup>2</sup> arm and the comparator arms are summarized in the table below and in figures 1 and 2 showing the survival curves for the two studies.

**Efficacy of TAXOTERE in the Treatment of Non-Small Cell Lung Cancer Patients Previously Treated with a Platinum-Based Chemotherapy Regimen (Intent-to-Treat Analysis)**

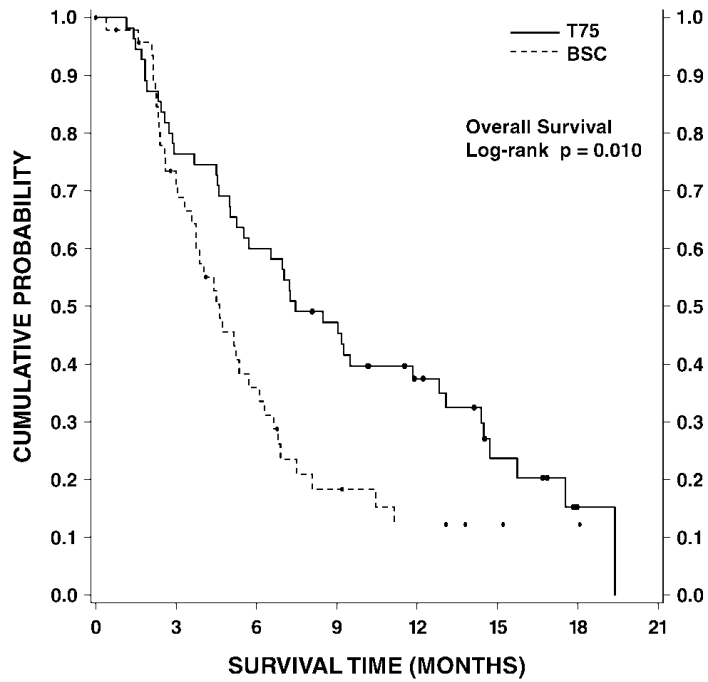
	TAX317		TAX320	
	Docetaxel 75 mg/m <sup>2</sup> n=55	Best Supportive Care/75 n=49	Docetaxel 75 mg/m <sup>2</sup> n=125	Control (V/I) n=123
Overall Survival				

Log-rank Test	p=0.01		p=0.13	
Risk Ratio <sup>††</sup> , Mortality (Docetaxel: Control)	0.56		0.82	
95% CI (Risk Ratio)	(0.35, 0.88)		(0.63, 1.06)	
Median Survival	7.5 months*	4.6 months	5.7 months	5.6 months
95% CI	(5.5, 12.8)	(3.7, 6.1)	(5.1, 7.1)	(4.4, 7.9)
% 1-year Survival	37%* <sup>†</sup>	12%	30%* <sup>†</sup>	20%
95% CI	(24, 50)	(2, 23)	(22, 39)	(13, 27)
Time to Progression	12.3 weeks*	7.0 weeks	8.3 weeks	7.6 weeks
95% CI	(9.0, 18.3)	(6.0, 9.3)	(7.0, 11.7)	(6.7, 10.1)
Response Rate	5.5%	Not Applicable	5.7%	0.8%
95% CI	(1.1, 15.1)		(2.3, 11.3)	(0.0, 4.5)

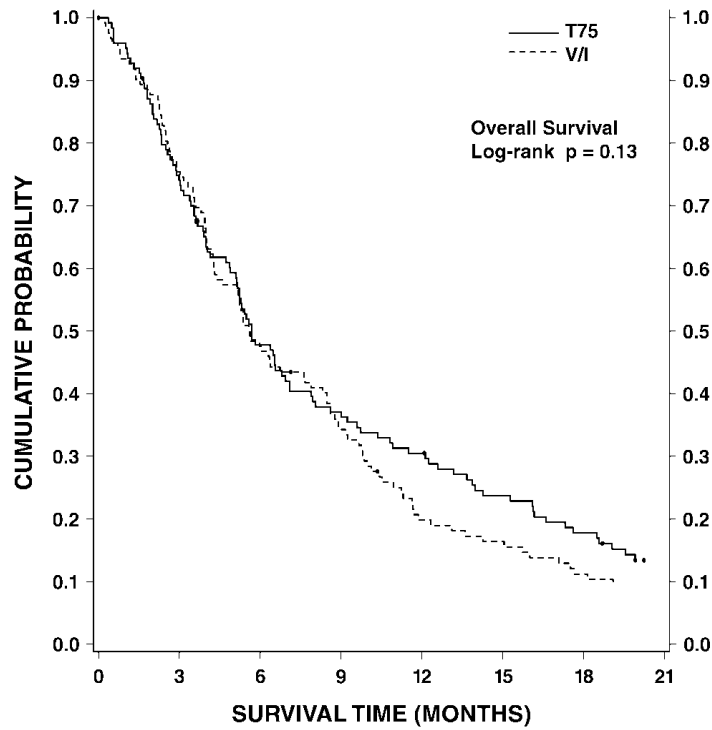
\* p≤0.05; <sup>†</sup> uncorrected for multiple comparisons; <sup>††</sup> a value less than 1.00 favors docetaxel.

Only one of the two trials (TAX317) showed a clear effect on survival, the primary endpoint; that trial also showed an increased rate of survival to one year. In the second study (TAX320) the rate of survival at one year favored TAXOTERE 75 mg/m<sup>2</sup>.

### TAX317 Survival K-M Curves - Docetaxel 75 mg/m<sup>2</sup> vs. Best Supportive Care



### TAX320 Survival K-M Curves - Docetaxel 75 mg/m<sup>2</sup> vs. Vinorelbine or Ifosfamide Control



Patients treated with TAXOTERE at a dose of 75 mg/m<sup>2</sup> experienced no deterioration in performance status and body weight relative to the comparator arms used in these trials.

**Combination Therapy with TAXOTERE for Chemotherapy Naï ve NSCLC**

In a randomized controlled trial (TAX326), 1218 patients with unresectable stage IIIB or IV NSCLC and no prior chemotherapy were randomized to receive one of three treatments: TAXOTERE 75 mg/m<sup>2</sup> as a 1 hour infusion immediately followed by cisplatin 75 mg/m<sup>2</sup> over 30-60 minutes every 3 weeks; vinorelbine 25 mg/m<sup>2</sup> administered over 6-10 minutes on days 1, 8, 15, 22 followed by cisplatin 100 mg/m<sup>2</sup> administered on day 1 of cycles repeated every 4 weeks; or a combination of TAXOTERE and carboplatin.

The primary efficacy endpoint was overall survival. Treatment with TAXOTERE+cisplatin did not result in a statistically significantly superior survival compared to vinorelbine+cisplatin (see table below). The 95% confidence interval of the hazard ratio(adjusted for interim analysis and multiple comparisons) shows that the addition of TAXOTERE to cisplatin results in an outcome ranging from a 6% inferior to a 26% superior survival compared to the addition of vinorelbine to cisplatin. The results of a further statistical analysis showed that at least (the lower bound of the 95% confidence interval) 62% of the known survival effect of vinorelbine when added to cisplatin (about a 2-month increase in median survival ; Wozniak et al. JCO, 1998) was maintained. The efficacy data for the TAXOTERE + cisplatin arm and the comparator arm are summarized in the table below.

**Survival Analysis of TAXOTERE in Combination Therapy for Chemotherapy-Naï ve NSCLC**

Comparison	Taxotere+Cisplatin n=408	Vinorelbine+Cisplatin n=405
Kaplan-Meier Estimate of Median Survival	10.9 months	10.0 months
p-value <sup>a</sup>	0.122	
Estimated Hazard Ratio <sup>b</sup>	0.88	
Adjusted 95% CI <sup>c</sup>	(0.74, 1.06)	

<sup>a</sup> From the superiority test (stratified log rank) comparing TAXOTERE+cisplatin to vinorelbine+cisplatin

<sup>b</sup>Hazard ratio of Taxotere+cisplatin vs. vinorelbine+cisplatin. A hazard ratio of less than 1 indicates that TAXOTERE+cisplatin is associated with a longer survival.

<sup>c</sup>Adjusted for interim analysis and multiple comparisons.

The second comparison in the study, vinorelbine + cisplatin versus TAXOTERE + carboplatin, did not demonstrate superior survival associated with the TAXOTERE arm (Kaplan-Meier estimate of median survival was 9.1 months for TAXOTERE + carboplatin compared to 10.0 months on the vinorelbine + cisplatin arm) and the TAXOTERE + carboplatin arm did not demonstrate preservation of at least 50% of the survival effect of vinorelbine added to cisplatin.

Secondary endpoints evaluated in the trial included objective response and time to progression. There was no statistically significant difference between TAXOTERE + cisplatin and

vinorelbine + cisplatin with respect to objective response and time to progression (see table below).

### Response and TTP Analysis of TAXOTERE in Combination Therapy for Chemotherapy-Naï ve NSCLC

Endpoint	TAXOTERE+Cisplatin	Vinorelbine+Cisplatin	P-value
Objective Response Rate (95% CI) <sup>a</sup>	31.6% (26.5%, 36.8%)	24.4% (19.8%, 29.2%)	Not Significant
Median Time to Progression <sup>b</sup> (95% CI) <sup>a</sup>	21.4 weeks (19.3, 24.6)	22.1 weeks (18.1, 25.6)	Not Significant

<sup>a</sup>Adjusted for multiple comparisons.

<sup>b</sup>Kaplan-Meier estimates.

### INDICATIONS AND USAGE

**Breast Cancer:** TAXOTERE is indicated for the treatment of patients with locally advanced or metastatic breast cancer after failure of prior chemotherapy.

#### Non-Small Cell Lung Cancer:

TAXOTERE, as a single agent, is indicated for the treatment of patients with locally advanced or metastatic non-small cell lung cancer after failure of prior platinum-based chemotherapy.

TAXOTERE in combination with cisplatin is indicated for the treatment of patients with unresectable, locally advanced or metastatic non-small cell lung cancer who have not previously received chemotherapy for this condition.

### CONTRAINDICATIONS

TAXOTERE is contraindicated in patients who have a history of severe hypersensitivity reactions to docetaxel or to other drugs formulated with polysorbate 80.

TAXOTERE should not be used in patients with neutrophil counts of <1500 cells/mm<sup>3</sup>.

### WARNINGS

TAXOTERE should be administered under the supervision of a qualified physician experienced in the use of antineoplastic agents. Appropriate management of complications is possible only when adequate diagnostic and treatment facilities are readily available.

#### Toxic Deaths

**Breast Cancer:** TAXOTERE administered at 100 mg/m<sup>2</sup> was associated with deaths considered possibly or probably related to treatment in 2.0% (19/965) of metastatic breast cancer patients, both previously treated and untreated, with normal baseline liver function and in 11.5% (7/61) of patients with various tumor types who had abnormal baseline liver function (SGOT and/or SGPT > 1.5 times ULN together with AP > 2.5 times ULN). Among patients dosed at 60 mg/m<sup>2</sup>, mortality related to treatment occurred in 0.6% (3/481) of patients with normal liver function, and in 3 of 7 patients with abnormal liver function. Approximately half of these deaths occurred during the first cycle. Sepsis accounted for the majority of the deaths.

**Non-Small Cell Lung Cancer:** TAXOTERE administered at a dose of 100 mg/m<sup>2</sup> in patients with locally advanced or metastatic non-small cell lung cancer who had a history of prior

platinum-based chemotherapy was associated with increased treatment-related mortality (14% and 5% in two randomized, controlled studies). There were 2.8% treatment-related deaths among the 176 patients treated at the 75 mg/m<sup>2</sup> dose in the randomized trials. Among patients who experienced treatment-related mortality at the 75 mg/m<sup>2</sup> dose level, 3 of 5 patients had a PS of 2 at study entry (see **BOXED WARNING, CLINICAL STUDIES, and DOSAGE AND ADMINISTRATION** sections).

**Premedication Regimen:** All patients should be premedicated with oral corticosteroids such as dexamethasone 16 mg per day (e.g., 8 mg BID) for 3 days starting 1 day prior to TAXOTERE to reduce the severity of fluid retention and hypersensitivity reactions (see **DOSAGE AND ADMINISTRATION** section). This regimen was evaluated in 92 patients with metastatic breast cancer previously treated with chemotherapy given TAXOTERE at a dose of 100 mg/m<sup>2</sup> every 3 weeks.

**Hypersensitivity Reactions:** Patients should be observed closely for hypersensitivity reactions, especially during the first and second infusions. Severe hypersensitivity reactions characterized by hypotension and/or bronchospasm, or generalized rash/erythema occurred in 2.2% of the 92 patients premedicated with 3-day corticosteroids. Hypersensitivity reactions requiring discontinuation of the TAXOTERE infusion were reported in 5 out of 1260 patients with various tumor types who did not receive premedication, but in 0/92 patients premedicated with 3-day corticosteroids. Patients with a history of severe hypersensitivity reactions should not be rechallenged with TAXOTERE.

**Hematologic Effects:** Neutropenia (< 2000 neutrophils/mm<sup>3</sup>) occurs in virtually all patients given 60-100 mg/m<sup>2</sup> of TAXOTERE and grade 4 neutropenia (< 500 cells/mm<sup>3</sup>) occurs in 85% of patients given 100 mg/m<sup>2</sup> and 75% of patients given 60 mg/m<sup>2</sup>. Frequent monitoring of blood counts is, therefore, essential so that dose can be adjusted. TAXOTERE should not be administered to patients with neutrophils < 1500 cells/mm<sup>3</sup>.

Febrile neutropenia occurred in about 12% of patients given 100 mg/m<sup>2</sup> but was very uncommon in patients given 60 mg/m<sup>2</sup>. Hematologic responses, febrile reactions and infections, and rates of septic death for different regimens are dose related and are described in **CLINICAL STUDIES**.

Three breast cancer patients with severe liver impairment (bilirubin > 1.7 times ULN) developed fatal gastrointestinal bleeding associated with severe drug-induced thrombocytopenia.

**Hepatic Impairment:** (see **BOXED WARNING**).

**Fluid Retention:** (see **BOXED WARNING**).

**Pregnancy:** TAXOTERE can cause fetal harm when administered to pregnant women. Studies in both rats and rabbits at doses ≥ 0.3 and 0.03 mg/kg/day, respectively (about 1/50 and 1/300 the daily maximum recommended human dose on a mg/m<sup>2</sup> basis), administered during the period of organogenesis, have shown that TAXOTERE is embryotoxic and fetotoxic (characterized by intrauterine mortality, increased resorption, reduced fetal weight, and fetal ossification delay). The doses indicated above also caused maternal toxicity.

There are no adequate and well-controlled studies in pregnant women using TAXOTERE. If TAXOTERE is used during pregnancy, or if the patient becomes pregnant while receiving this drug, the patient should be apprised of the potential hazard to the fetus or potential risk for loss of the pregnancy. Women of childbearing potential should be advised to avoid becoming pregnant during therapy with TAXOTERE.

## PRECAUTIONS

**General:** Responding patients may not experience an improvement in performance status on therapy and may experience worsening. The relationship between changes in performance status, response to therapy, and treatment-related side effects has not been established.

**Hematologic Effects:** In order to monitor the occurrence of myelotoxicity, it is recommended that frequent peripheral blood cell counts be performed on all patients receiving TAXOTERE. Patients should not be retreated with subsequent cycles of TAXOTERE until neutrophils recover to a level  $> 1500$  cells/mm<sup>3</sup> and platelets recover to a level  $> 100,000$  cells/mm<sup>3</sup>.

A 25% reduction in the dose of TAXOTERE® (docetaxel) for Injection Concentrate is recommended during subsequent cycles following severe neutropenia ( $< 500$  cells/mm<sup>3</sup>) lasting 7 days or more, febrile neutropenia, or a grade 4 infection in a TAXOTERE cycle (see **DOSAGE AND ADMINISTRATION** section).

**Hypersensitivity Reactions:** Hypersensitivity reactions may occur within a few minutes following initiation of a TAXOTERE infusion. If minor reactions such as flushing or localized skin reactions occur, interruption of therapy is not required. More severe reactions, however, require the immediate discontinuation of TAXOTERE and aggressive therapy. All patients should be premedicated with an oral corticosteroid prior to the initiation of the infusion of TAXOTERE (see **BOXED WARNING** and **WARNINGS: Premedication Regimen**).

**Cutaneous:** Localized erythema of the extremities with edema followed by desquamation has been observed. In case of severe skin toxicity, an adjustment in dosage is recommended (see **DOSAGE AND ADMINISTRATION** section). The discontinuation rate due to skin toxicity was 1.6% (15/965) for metastatic breast cancer patients. Among 92 breast cancer patients premedicated with 3-day corticosteroids, there were no cases of severe skin toxicity reported and no patient discontinued TAXOTERE due to skin toxicity.

**Fluid Retention:** Severe fluid retention has been reported following TAXOTERE therapy (see **BOXED WARNING** and **WARNINGS: Premedication Regimen**). Patients should be premedicated with oral corticosteroids prior to each TAXOTERE administration to reduce the incidence and severity of fluid retention (see **DOSAGE AND ADMINISTRATION** section). Patients with pre-existing effusions should be closely monitored from the first dose for the possible exacerbation of the effusions.

When fluid retention occurs, peripheral edema usually starts in the lower extremities and may become generalized with a median weight gain of 2 kg.

Among 92 breast cancer patients premedicated with 3-day corticosteroids, moderate fluid retention occurred in 27.2% and severe fluid retention in 6.5%. The median cumulative dose to onset of moderate or severe fluid retention was 819 mg/m<sup>2</sup>. 9.8% (9/92) of patients discontinued treatment due to fluid retention: 4 patients discontinued with severe fluid retention; the remaining 5 had mild or moderate fluid retention. The median cumulative dose to treatment discontinuation due to fluid retention was 1021 mg/m<sup>2</sup>. Fluid retention was completely, but sometimes slowly, reversible with a median of 16 weeks from the last infusion of TAXOTERE to resolution (range: 0 to 42+ weeks). Patients developing peripheral edema may be treated with standard measures, e.g., salt restriction, oral diuretic(s).

**Neurologic:** Severe neurosensory symptoms (paresthesia, dysesthesia, pain) were observed in 5.5% (53/965) of metastatic breast cancer patients, and resulted in treatment discontinuation in 6.1%. When these symptoms occur, dosage must be adjusted. If symptoms persist, treatment should be discontinued (see **DOSAGE AND ADMINISTRATION** section). Patients who

experienced neurotoxicity in clinical trials and for whom follow-up information on the complete resolution of the event was available had spontaneous reversal of symptoms with a median of 9 weeks from onset (range: 0 to 106 weeks). Severe peripheral motor neuropathy mainly manifested as distal extremity weakness occurred in 4.4% (42/965).

**Asthenia:** Severe asthenia has been reported in 14.9% (144/965) of metastatic breast cancer patients but has led to treatment discontinuation in only 1.8%. Symptoms of fatigue and weakness may last a few days up to several weeks and may be associated with deterioration of performance status in patients with progressive disease.

**Information for Patients:** For additional information, see the accompanying Patient Information Leaflet.

**Drug Interactions:** There have been no formal clinical studies to evaluate the drug interactions of TAXOTERE with other medications. In vitro studies have shown that the metabolism of docetaxel may be modified by the concomitant administration of compounds that induce, inhibit, or are metabolized by cytochrome P450 3A4, such as cyclosporine, terfenadine, ketoconazole, erythromycin, and troleandomycin. Caution should be exercised with these drugs when treating patients receiving TAXOTERE as there is a potential for a significant interaction.

**Carcinogenicity, Mutagenicity, Impairment of Fertility:** No studies have been conducted to assess the carcinogenic potential of TAXOTERE. TAXOTERE has been shown to be clastogenic in the *in vitro* chromosome aberration test in CHO-K<sub>1</sub> cells and in the *in vivo* micronucleus test in the mouse, but it did not induce mutagenicity in the Ames test or the CHO/HGPRT gene mutation assays. TAXOTERE produced no impairment of fertility in rats when administered in multiple IV doses of up to 0.3 mg/kg (about 1/50 the recommended human dose on a mg/m<sup>2</sup> basis), but decreased testicular weights were reported. This correlates with findings of a 10-cycle toxicity study (dosing once every 21 days for 6 months) in rats and dogs in which testicular atrophy or degeneration was observed at IV doses of 5 mg/kg in rats and 0.375 mg/kg in dogs (about 1/3 and 1/15 the recommended human dose on a mg/m<sup>2</sup> basis, respectively). An increased frequency of dosing in rats produced similar effects at lower dose levels.

**Pregnancy:** Pregnancy Category D (see **WARNINGS** section).

**Nursing Mothers:** It is not known whether TAXOTERE is excreted in human milk. Because many drugs are excreted in human milk, and because of the potential for serious adverse reactions in nursing infants from TAXOTERE, mothers should discontinue nursing prior to taking the drug.

**Pediatric Use:** The safety and effectiveness of TAXOTERE in pediatric patients have not been established.

**Geriatric Use:** In a study conducted in chemotherapy-naïve patients with NSCLC (TAX326), 148 patients (36%) in the TAXOTERE + cisplatin group were 65 years of age or greater. There were 128 patients (32%) in the vinorelbine + cisplatin group 65 years of age or greater. In the TAXOTERE + cisplatin group, patients less than 65 years of age had a median survival of 10.3 months (95% CI : 9.1 months, 11.8 months) and patients 65 years or older had a median survival of 12.1 months (95% CI : 9.3 months, 14 months). In patients 65 years of age or greater treated with TAXOTERE + cisplatin, diarrhea (55%), peripheral edema (39%) and stomatitis (28%) were observed more frequently than in the vinorelbine + cisplatin group (diarrhea 24%, peripheral edema 20%, stomatitis 20%). Patients treated with TAXOTERE + cisplatin who were 65 years of age or greater were more likely to experience diarrhea (55%), infections (42%),

peripheral edema (39%), and stomatitis (28%) compared to patients less than the age of 65 administered the same treatment (43%, 31%, 31%, and 21%, respectively).

When TAXOTERE was combined with carboplatin for the treatment of chemotherapy naïve, advanced non-small cell lung carcinoma, patients 65 years of age or greater (28%) experienced higher frequency of infection compared to similar patients treated with TAXOTERE + cisplatin, and a higher frequency of diarrhea, infection and peripheral edema than elderly patients treated with vinorelbine + cisplatin.

## **ADVERSE REACTIONS**

The adverse reactions are described separately for TAXOTERE 100 mg/m<sup>2</sup>, the maximum dose approved for breast cancer, and 75 mg/m<sup>2</sup>, the dose approved for advanced non-small cell lung carcinoma after prior platinum-based chemotherapy and in combination with cisplatin for treatment of patients with non-small cell lung carcinoma who have not previously received chemotherapy for this condition.

TAXOTERE 100 mg/m<sup>2</sup>: Adverse drug reactions occurring in at least 5% of patients are compared for three populations who received TAXOTERE administered at 100 mg/m<sup>2</sup> as a 1-hour infusion every 3 weeks: 2045 patients with various tumor types and normal baseline liver function tests; the subset of 965 patients with locally advanced or metastatic breast cancer, both previously treated and untreated with chemotherapy, who had normal baseline liver function tests; and an additional 61 patients with various tumor types who had abnormal liver function tests at baseline. These reactions were described using COSTART terms and were considered possibly or probably related to TAXOTERE. At least 95% of these patients did not receive hematopoietic support. The safety profile is generally similar in patients receiving TAXOTERE for the treatment of breast cancer and in patients with other tumor types.

**Summary of Adverse Events in Patients Receiving TAXOTERE at 100 mg/m<sup>2</sup>**

Adverse Event	All Tumor Types Normal LFTs* n=2045 %	All Tumor Types Elevated LFTs** n=61 %	Breast Cancer Normal LFTs* n=965 %
<b>Hematologic</b>			
Neutropenia			
<2000 cells/mm <sup>3</sup>	95.5	96.4	98.5
<500 cells/mm <sup>3</sup>	75.4	87.5	85.9
Leukopenia			
<4000 cells/mm <sup>3</sup>	95.6	98.3	98.6
<1000 cells/mm <sup>3</sup>	31.6	46.6	43.7
Thrombocytopenia			
<100,000 cells/mm <sup>3</sup>	8.0	24.6	9.2
Anemia			
<11 g/dL	90.4	91.8	93.6
<8 g/dL	8.8	31.1	7.7
Febrile Neutropenia***	11.0	26.2	12.3
<b>Septic Death</b>	1.6	4.9	1.4
<b>Non-Septic Death</b>	0.6	6.6	0.6
<b>Infections</b>			
Any	21.6	32.8	22.2
Severe	6.1	16.4	6.4
<b>Fever in Absence of Infection</b>			
Any	31.2	41.0	35.1
Severe	2.1	8.2	2.2
<b>Hypersensitivity Reactions</b>			
Regardless of Premedication			
Any	21.0	19.7	17.6
Severe	4.2	9.8	2.6
With 3-day Premedication			
Any	n=92 15.2	n=3 33.3	n=92 15.2
Severe	2.2	0	2.2
<b>Fluid Retention</b>			
Regardless of Premedication			
Any	47.0	39.3	59.7
Severe	6.9	8.2	8.9
With 3-day Premedication			
Any	n=92 64.1	n=3 66.7	n=92 64.1
Severe	6.5	33.3	6.5
<b>Neurosensory</b>			
Any	49.3	34.4	58.3
Severe	4.3	0	5.5

<b>Cutaneous</b>			
Any	47.6	54.1	47.0
Severe	4.8	9.8	5.2
<b>Nail Changes</b>			
Any	30.6	23.0	40.5
Severe	2.5	4.9	3.7
<b>Gastrointestinal</b>			
Nausea	38.8	37.7	42.1
Vomiting	22.3	23.0	23.4
Diarrhea	38.7	32.8	42.6
Severe	4.7	4.9	5.5
<b>Stomatitis</b>			
Any	41.7	49.2	51.7
Severe	5.5	13.0	7.4
<b>Alopecia</b>	75.8	62.3	74.2
<b>Asthenia</b>			
Any	61.8	52.5	66.3
Severe	12.8	24.6	14.9
<b>Myalgia</b>			
Any	18.9	16.4	21.1
Severe	1.5	1.6	1.8
<b>Arthralgia</b>	9.2	6.6	8.2
<b>Infusion Site Reactions</b>	4.4	3.3	4.0

**\*Normal Baseline LFTs: Transaminases  $\leq$  1.5 times ULN or alkaline phosphatase  $\leq$  2.5 times ULN or isolated elevations of transaminases or alkaline phosphatase up to 5 times ULN**

**\*\*Elevated Baseline LFTs: SGOT and/or SGPT > 1.5 times ULN concurrent with alkaline phosphatase > 2.5 times ULN**

**\*\*\*Febrile Neutropenia: ANC grade 4 with fever > 38°C with IV antibiotics and/or hospitalization**

**Hematologic:** (see **WARNINGS**). Reversible marrow suppression was the major dose-limiting toxicity of TAXOTERE. The median time to nadir was 7 days, while the median duration of severe neutropenia (<500 cells/mm<sup>3</sup>) was 7 days. Among 2045 patients with solid tumors and normal baseline LFTs, severe neutropenia occurred in 75.4% and lasted for more than 7 days in 2.9% of cycles.

Febrile neutropenia (<500 cells/mm<sup>3</sup> with fever > 38°C with IV antibiotics and/or hospitalization) occurred in 11% of patients with solid tumors, in 12.3% of patients with metastatic breast cancer, and in 9.8% of 92 breast cancer patients premedicated with 3-day corticosteroids.

Severe infectious episodes occurred in 6.1% of patients with solid tumors, in 6.4% of patients with metastatic breast cancer, and in 5.4% of 92 breast cancer patients premedicated with 3-day corticosteroids.

Thrombocytopenia (<100,000 cells/mm<sup>3</sup>) associated with fatal gastrointestinal hemorrhage has been reported.

**Hypersensitivity Reactions:** Severe hypersensitivity reactions are discussed in the **BOXED WARNING, WARNINGS, and PRECAUTIONS** sections. Minor events, including flushing, rash with or without pruritus, chest tightness, back pain, dyspnea, drug fever, or chills, have been reported and resolved after discontinuing the infusion and appropriate therapy.

**Fluid Retention:** (see **BOXED WARNING, WARNINGS: Premedication Regimen, and PRECAUTIONS** sections).

**Cutaneous:** Severe skin toxicity is discussed in **PRECAUTIONS**. Reversible cutaneous reactions characterized by a rash including localized eruptions, mainly on the feet and/or hands, but also on the arms, face, or thorax, usually associated with pruritus, have been observed. Eruptions generally occurred within 1 week after TAXOTERE infusion, recovered before the next infusion, and were not disabling.

Severe nail disorders were characterized by hypo- or hyperpigmentation, and occasionally by onycholysis (in 0.8% of patients with solid tumors) and pain.

**Neurologic:** (see **PRECAUTIONS**).

**Gastrointestinal:** Gastrointestinal reactions (nausea and/or vomiting and/or diarrhea) were generally mild to moderate. Severe reactions occurred in 3-5% of patients with solid tumors and to a similar extent among metastatic breast cancer patients. The incidence of severe reactions was 1% or less for the 92 breast cancer patients premedicated with 3-day corticosteroids.

Severe stomatitis occurred in 5.5% of patients with solid tumors, in 7.4% of patients with metastatic breast cancer, and in 1.1% of the 92 breast cancer patients premedicated with 3-day corticosteroids.

**Cardiovascular:** Hypotension occurred in 2.8% of patients with solid tumors; 1.2% required treatment. Clinically meaningful events such as heart failure, sinus tachycardia, atrial flutter, dysrhythmia, unstable angina, pulmonary edema, and hypertension occurred rarely. 8.1% (7/86) of metastatic breast cancer patients receiving TAXOTERE 100 mg/m<sup>2</sup> in a randomized trial and who had serial left ventricular ejection fractions assessed developed deterioration of LVEF by ≥ 10% associated with a drop below the institutional lower limit of normal.

**Infusion Site Reactions:** Infusion site reactions were generally mild and consisted of hyperpigmentation, inflammation, redness or dryness of the skin, phlebitis, extravasation, or swelling of the vein.

**Hepatic:** In patients with normal LFTs at baseline, bilirubin values greater than the ULN occurred in 8.9% of patients. Increases in SGOT or SGPT > 1.5 times the ULN, or alkaline phosphatase > 2.5 times ULN, were observed in 18.9% and 7.3% of patients, respectively. While on TAXOTERE, increases in SGOT and/or SGPT > 1.5 times ULN concomitant with alkaline phosphatase > 2.5 times ULN occurred in 4.3% of patients with normal LFTs at baseline. (Whether these changes were related to the drug or underlying disease has not been established.)

### **Monotherapy with TAXOTERE for Unresectable, Locally Advanced or Metastatic NSCLC Previously Treated with Platinum-based Chemotherapy**

TAXOTERE 75 mg/m<sup>2</sup>: Treatment emergent adverse drug reactions are shown below. Included in this table are safety data for a total of 176 patients with non-small cell lung carcinoma and a history of prior treatment with platinum-based chemotherapy who were treated in two randomized, controlled trials. These reactions were described using NCI Common Toxicity Criteria regardless of relationship to study treatment, except for the hematologic toxicities or otherwise noted.

**Treatment Emergent Adverse Events Regardless of Relationship to Treatment in Patients Receiving TAXOTERE as Monotherapy for Non-Small cell Lung Cancer Previously Treated with Platinum-Based Chemotherapy. \***

<b>Adverse Event</b>	<b>TAXOTERE 75 mg/m<sup>2</sup> n=176 %</b>	<b>Best Supportive Care n=49 %</b>	<b>Vinorelbine/ Ifosfamide n=119 %</b>
<b>Neutropenia</b>			
Any	84.1	14.3	83.2
Grade 3/4	65.3	12.2	57.1
<b>Leukopenia</b>			
Any	83.5	6.1	89.1
Grade 3/4	49.4	0	42.9
<b>Thrombocytopenia</b>			
Any	8.0	0	7.6
Grade 3/4	2.8	0	1.7

<b>Anemia</b>			
Any	91.0	55.1	90.8
Grade 3/4	9.1	12.2	14.3
<b>Febrile Neutropenia**</b>	6.3	NA <sup>†</sup>	0.8
<b>Infection</b>			
Any	33.5	28.6	30.3
Grade 3/4	10.2	6.1	9.2
<b>Treatment Related Mortality</b>	2.8	NA <sup>†</sup>	3.4
<b>Hypersensitivity Reactions</b>			
Any	5.7	0	0.8
Grade 3/4	2.8	0	0
<b>Fluid Retention</b>			
Any	33.5	ND <sup>††</sup>	22.7
Severe	2.8		3.4
<b>Neurosensory</b>			
Any	23.3	14.3	28.6
Grade 3/4	1.7	6.1	5.0
<b>Neuromotor</b>			
Any	15.9	8.2	10.1
Grade 3/4	4.5	6.1	3.4
<b>Skin</b>			
Any	19.9	6.1	16.8
Grade 3/4	0.6	2.0	0.8
<b>Gastrointestinal</b>			
Nausea			
Any	33.5	30.6	31.1
Grade 3/4	5.1	4.1	7.6
Vomiting			
Any	21.6	26.5	21.8
Grade 3/4	2.8	2.0	5.9
Diarrhea			
Any	22.7	6.1	11.8
Grade 3/4	2.8	0	4.2
<b>Alopecia</b>	56.3	34.7	49.6
<b>Asthenia</b>			
Any	52.8	57.1	53.8
Severe***	18.2	38.8	22.7
<b>Stomatitis</b>			
Any	26.1	6.1	7.6
Grade 3/4	1.7	0	0.8
<b>Pulmonary</b>			
Any	40.9	49.0	45.4
Grade 3/4	21.0	28.6	18.5

<b>Nail Disorder</b>			
Any	11.4	0	1.7
Severe***	1.1	0	0
<b>Myalgia</b>			
Any	6.3	0	2.5
Severe***	0	0	0
<b>Arthralgia</b>			
Any	3.4	2.0	1.7
Severe***	0	0	0.8
<b>Taste Perversion</b>			
Any	5.7	0	0
Severe***	0.6	0	0

\*Normal Baseline LFTs: Transaminases  $\leq$  1.5 times ULN or alkaline phosphatase  $\leq$  2.5 times ULN or isolated elevations of transaminases or alkaline phosphatase up to 5 times ULN

\*\*Febrile Neutropenia: ANC grade 4 with fever  $>$  38°C with IV antibiotics and/or hospitalization

\*\*\*COSTART term and grading system

†Not Applicable; †† Not Done

### Combination Therapy with TAXOTERE in Chemotherapy Naï ve Advanced Unresectable or Metastatic NSCLC

The table below presents safety data from two arms of an open label, randomized controlled trial (TAX326) that enrolled patients with unresectable stage IIIB or IV non-small cell lung cancer and no history of prior chemotherapy. Adverse reactions were described using the NCI Common Toxicity Criteria except where otherwise noted.

#### Adverse Events Regardless of Relationship to Treatment in Chemotherapy Naï ve Advanced Non-Small Cell Lung Cancer Patients Receiving TAXOTERE in Combination with Cisplatin

Adverse Event	TAXOTERE 75 mg/m <sup>2</sup> + Cisplatin 75 mg/m <sup>2</sup> n=406 %	Vinorelbine 25 mg/m <sup>2</sup> + Cisplatin 100 mg/m <sup>2</sup> n=396 %

<b>Neutropenia</b>			
Any	91	90	
Grade 3/4	74	78	
<b>Febrile Neutropenia</b>	5	5	
<b>Thrombocytopenia</b>			
Any	15	15	
Grade 3/4	3	4	
<b>Anemia</b>			
Any	89	94	
Grade 3/4	7	25	
<b>Infection</b>			
Any	35	37	
Grade 3/4	8	8	
<b>Fever in absence of infection</b>			
Any	33	29	
Grade 3/4	< 1	1	

<b>Hypersensitivity Reaction*</b>			
Any	12	4	
Grade 3/4	3	< 1	
<b>Fluid Retention**</b>			
Any	54	42	
All severe or life-threatening events	2	2	
Pleural effusion			
Any	23	22	
All severe or life-threatening events	2	2	
Peripheral edema			
Any	34	18	
All severe or life-threatening events	<1	<1	
Weight gain			
Any	15	9	
All severe or life-threatening events	<1	<1	
<b>Neuro-Sensory</b>			
Any	47	42	
Grade 3/4	4	4	
<b>Neuro-Motor</b>			
Any	19	17	
Grade 3/4	3	6	
<b>Skin</b>			
Any	16	14	
Grade 3/4	< 1	1	
<b>Nausea</b>			
Any	72	76	
Grade 3 / 4	10	17	
Vomiting			
Any	55	61	
Grade 3 / 4	8	16	
<b>Diarrhea</b>			
Any	47	25	
Grade 3/4	7	3	
<b>Anorexia**</b>			
Any	42	40	
All severe or life threatening events	5	5	
<b>Stomatitis</b>			
Any	24	21	
Grade 3/4	2	1	
<b>Alopecia</b>			
Any	75	42	
Grade 3	< 1	0	
<b>Asthenia**</b>			
Any	74	75	
All severe or life threatening events	12	14	
<b>Nail Disorder**</b>			
Any	14	< 1	

All severe events	< 1	0	
<b>Myalgia**</b>			
Any	18	12	
All severe events	< 1	< 1	

\* Replaces NCI term “Allergy”

\*\* COSTART term and grading system

Deaths within 30 days of last study treatment occurred in 31 patients (7.6%) in the docetaxel + cisplatin arm and 37 patients (9.3%) in the vinorelbine+cisplatin arm. Deaths within 30 days of last study treatment attributed to study drug occurred in 9 patients (2.2%) in the docetaxel + cisplatin arm and 8 patients (2.0%) in the vinorelbine+cisplatin arm.

The second comparison in the study, vinorelbine + cisplatin versus TAXOTERE + carboplatin (which did not demonstrate a superior survival associated with TAXOTERE, see Clinical Studies section) demonstrated a higher incidence of thrombocytopenia, diarrhea, fluid retention, hypersensitivity reactions, skin toxicity, alopecia and nail changes on the TAXOTERE + carboplatin arm, while a higher incidence of anemia, neurosensory toxicity, nausea, vomiting, anorexia and asthenia was observed on the vinorelbine + cisplatin arm.

### Post-marketing Experiences

The following adverse events have been identified from clinical trials and/or post-marketing surveillance. Because they are reported from a population of unknown size, precise estimates of frequency cannot be made.

Body as a whole: diffuse pain, chest pain, radiation recall phenomenon

Cardiovascular: atrial fibrillation, deep vein thrombosis, ECG abnormalities, thrombophlebitis, pulmonary embolism, syncope, tachycardia, myocardial infarction

Cutaneous: rare cases of bullous eruption such as erythema multiforme or Stevens-Johnson syndrome. Multiple factors may have contributed to the development of these effects.

Gastrointestinal: abdominal pain, anorexia, constipation, duodenal ulcer, esophagitis, gastrointestinal hemorrhage. Rare occurrences of dehydration as a consequence to gastrointestinal events, gastrointestinal perforation, ischemic colitis, colitis, intestinal obstruction, ileus, and neutropenic enterocolitis have been reported.

Hematologic: bleeding episodes

Hepatic: rare cases of hepatitis have been reported.

Neurologic: confusion, rare cases of seizures or transient loss of consciousness have been observed, sometimes appearing during the infusion of the drug.

Ophthalmologic: conjunctivitis, lacrimation or lacrimation with or without conjunctivitis. Rare cases of lacrimal duct obstruction resulting in excessive tearing have been reported primarily in patients receiving other anti-tumor agents concomitantly.

Respiratory: dyspnea, acute pulmonary edema, acute respiratory distress syndrome, interstitial pneumonia

Urogenital: renal insufficiency

## OVERDOSAGE

There is no known antidote for TAXOTERE overdose. In case of overdose, the patient should be kept in a specialized unit where vital functions can be closely monitored. Anticipated complications of overdose include: bone marrow suppression, peripheral neurotoxicity, and mucositis. Patients should receive therapeutic G-CSF as soon as possible after discovery of overdose. Other appropriate symptomatic measures should be taken, as needed.

In two reports of overdose, one patient received 150 mg/m<sup>2</sup> and the other received 200 mg/m<sup>2</sup> as 1-hour infusions. Both patients experienced severe neutropenia, mild asthenia, cutaneous reactions, and mild paresthesia, and recovered without incident.

In mice, lethality was observed following single IV doses that were  $\geq 154$  mg/kg (about 4.5 times the recommended human dose on a mg/m<sup>2</sup> basis); neurotoxicity associated with paralysis, non-extension of hind limbs, and myelin degeneration was observed in mice at 48 mg/kg (about 1.5 times the recommended human dose on a mg/m<sup>2</sup> basis). In male and female rats, lethality was observed at a dose of 20 mg/kg (comparable to the recommended human dose on a mg/m<sup>2</sup> basis) and was associated with abnormal mitosis and necrosis of multiple organs.

## DOSAGE AND ADMINISTRATION

**Breast Cancer:** The recommended dose of TAXOTERE is 60-100 mg/m<sup>2</sup> administered intravenously over 1 hour every 3 weeks.

### Non-Small Cell Lung Cancer:

For treatment after failure of prior platinum-based chemotherapy, TAXOTERE was evaluated as monotherapy, and the recommended dose is 75 mg/m<sup>2</sup> administered intravenously over 1 hour every 3 weeks. A dose of 100 mg/m<sup>2</sup> in patients previously treated with chemotherapy was associated with increased hematologic toxicity, infection, and treatment-related mortality in randomized, controlled trials (see **BOXED WARNING, WARNINGS** and **CLINICAL STUDIES** sections).

For chemotherapy-naïve patients, TAXOTERE was evaluated in combination with cisplatin. The recommended dose of TAXOTERE is 75 mg/m<sup>2</sup> administered intravenously over 1 hour immediately followed by cisplatin 75 mg/m<sup>2</sup> over 30-60 minutes every 3 weeks.

**Premedication Regimen:** All patients should be premedicated with oral corticosteroids such as dexamethasone 16 mg per day (e.g., 8 mg BID) for 3 days starting 1 day prior to TAXOTERE administration in order to reduce the incidence and severity of fluid retention as well as the severity of hypersensitivity reactions (see **BOXED WARNING, WARNINGS**, and **PRECAUTIONS** sections).

### Dosage Adjustments During Treatment

**Breast Cancer:** Patients who are dosed initially at 100 mg/m<sup>2</sup> and who experience either febrile neutropenia, neutrophils  $< 500$  cells/mm<sup>3</sup> for more than 1 week, or severe or cumulative cutaneous reactions during TAXOTERE therapy should have the dosage adjusted from 100 mg/m<sup>2</sup> to 75 mg/m<sup>2</sup>. If the patient continues to experience these reactions, the dosage should either be decreased from 75 mg/m<sup>2</sup> to 55 mg/m<sup>2</sup> or the treatment should be discontinued. Conversely, patients who are dosed initially at 60 mg/m<sup>2</sup> and who do not experience febrile neutropenia, neutrophils  $< 500$  cells/mm<sup>3</sup> for more than 1 week, severe or cumulative cutaneous reactions, or severe peripheral neuropathy during TAXOTERE therapy may tolerate higher doses. Patients who develop  $\geq$  grade 3 peripheral neuropathy should have TAXOTERE treatment discontinued entirely.



### **Non-Small Cell Lung Cancer:**

#### **Monotherapy with TAXOTERE for NSCLC Treatment After Failure of Prior Platinum based Chemotherapy**

Patients who are dosed initially at 75 mg/m<sup>2</sup> and who experience either febrile neutropenia, neutrophils <500 cells/mm<sup>3</sup> for more than one week, severe or cumulative cutaneous reactions, or other grade 3/4 non-hematological toxicities during TAXOTERE treatment should have treatment withheld until resolution of the toxicity and then resumed at 55 mg/m<sup>2</sup>. Patients who develop ≥ grade 3 peripheral neuropathy should have TAXOTERE treatment discontinued entirely.

#### **Combination Therapy with TAXOTERE for Chemotherapy Naive NSCLC**

For patients who are dosed initially at TAXOTERE 75 mg/m<sup>2</sup> in combination with cisplatin, and whose nadir of platelet count during the previous course of therapy is <25,000 cells/mm<sup>3</sup>, in patients who experience febrile neutropenia, and in patients with serious non-hematologic toxicities, the TAXOTERE dosage in subsequent cycles should be reduced to 65 mg/m<sup>2</sup>. In patients who require a further dose reduction, a dose of 50 mg/m<sup>2</sup> is recommended. For cisplatin dosage adjustments, see manufacturers' prescribing information.

#### **Special Populations:**

**Hepatic Impairment:** Patients with bilirubin > ULN should generally not receive TAXOTERE. Also, patients with SGOT and/or SGPT > 1.5 x ULN concomitant with alkaline phosphatase > 2.5 x ULN should generally not receive TAXOTERE.

**Children:** The safety and effectiveness of docetaxel in pediatric patients below the age of 16 years have not been established.

**Elderly:** see Precautions, Geriatric use. In general, dose selection for an elderly patient should be cautious, reflecting the greater frequency of decreased hepatic, renal, or cardiac function and of concomitant disease or other drug therapy in elderly patients.

#### **PREPARATION AND ADMINISTRATION PRECAUTIONS**

TAXOTERE is a cytotoxic anticancer drug and, as with other potentially toxic compounds, caution should be exercised when handling and preparing TAXOTERE solutions. The use of gloves is recommended. Please refer to **Handling and Disposal** section.

If TAXOTERE concentrate, initial diluted solution, or final dilution for infusion should come into contact with the skin, immediately and thoroughly wash with soap and water. If TAXOTERE concentrate, initial diluted solution, or final dilution for infusion should come into contact with mucosa, immediately and thoroughly wash with water.

TAXOTERE for Injection Concentrate requires two dilutions prior to administration. Please follow the preparation instructions provided below. **Note:** Both the TAXOTERE for Injection Concentrate and the diluent vials contain an overfill.

##### **A. Preparation of the Initial Diluted Solution**

1. Remove the appropriate number of vials of TAXOTERE for Injection Concentrate and diluent (13% Ethanol in Water for Injection) from the refrigerator. Allow the vials to stand at room temperature for approximately 5 minutes.

2. Aseptically withdraw the contents of the appropriate diluent vial into a syringe and transfer it to the appropriate vial of TAXOTERE for Injection Concentrate. **If the procedure is followed as described, an initial diluted solution of 10mg docetaxel/mL will result.**

3. Gently rotate the initial diluted solution for approximately 15 seconds to assure full mixture of the concentrate and diluent.

4. The initial diluted TAXOTERE solution (10 mg docetaxel/mL) should be clear; however, there may be some foam on top of the solution due to the polysorbate 80. Allow the solution to stand for a few minutes to allow any foam to dissipate. It is not required that all foam dissipate prior to continuing the preparation process.

The initial diluted solution may be used immediately or stored either in the refrigerator or at room temperature for a maximum of 8 hours.

#### B. Preparation of the Final Dilution for Infusion

1. Aseptically withdraw the required amount of initial diluted TAXOTERE solution (10 mg docetaxel/mL) with a calibrated syringe and inject into a 250 mL infusion bag or bottle of either 0.9% Sodium Chloride solution or 5% Dextrose solution to produce a final concentration of 0.3 to 0.74 mg/mL.

If a dose greater than 200 mg of TAXOTERE is required, use a larger volume of the infusion vehicle so that a concentration of 0.74 mg/mL TAXOTERE is not exceeded.

2. Thoroughly mix the infusion by manual rotation.

3. As with all parenteral products, TAXOTERE should be inspected visually for particulate matter or discoloration prior to administration whenever the solution and container permit. If the TAXOTERE for Injection initial diluted solution or final dilution for infusion is not clear or appears to have precipitation, these should be discarded.

The final TAXOTERE dilution for infusion should be administered intravenously as a 1-hour infusion under ambient room temperature and lighting conditions.

Contact of the TAXOTERE concentrate with plasticized PVC equipment or devices used to prepare solutions for infusion is not recommended. In order to minimize patient exposure to the plasticizer DEHP (di-2-ethylhexyl phthalate), which may be leached from PVC infusion bags or sets, the final TAXOTERE dilution for infusion should be stored in bottles (glass, polypropylene) or plastic bags (polypropylene, polyolefin) and administered through polyethylene-lined administration sets.

**Stability:** TAXOTERE infusion solution, if stored between 2 and 25°C (36 and 77°F) is stable for 4 hours. Fully prepared TAXOTERE infusion solution (in either 0.9% Sodium Chloride solution or 5% Dextrose solution) should be used within 4 hours (including the 1 hour i.v. administration).

#### HOW SUPPLIED

TAXOTERE for Injection Concentrate is supplied in a single-dose vial as a sterile, pyrogen-free, non-aqueous, viscous solution with an accompanying sterile, non-pyrogenic, diluent (13% ethanol in Water for Injection) vial. The following strengths are available:

**TAXOTERE 80 MG (NDC 0075-8001-80)**

TAXOTERE (docetaxel) 80 mg Concentrate for Infusion: 80 mg docetaxel in 2 mL polysorbate 80 and diluent for TAXOTERE 80 mg. 13% (w/w) ethanol in Water for Injection. Both items are in a blister pack in one carton.

**TAXOTERE 20 MG (NDC 0075-8001-20)**

TAXOTERE (docetaxel) 20 mg Concentrate for Infusion: 20 mg docetaxel in 0.5 mL polysorbate 80 and diluent for TAXOTERE 20 mg. 13% (w/w) ethanol in Water for Injection. Both items are in a blister pack in one carton.

**Storage:** Store between 2 and 25°C (36 and 77°F). Retain in the original package to protect from bright light. Freezing does not adversely affect the product.

**Handling and Disposal:** Procedures for proper handling and disposal of anticancer drugs should be considered. Several guidelines on this subject have been published<sup>1-7</sup>. There is no general agreement that all of the procedures recommended in the guidelines are necessary or appropriate.

#### REFERENCES

- 1.OSHA Work-Practice Guidelines for Controlling Occupational Exposure to Hazardous Drugs. *Am J Health-Syst Pharm.* 1996; 53: 1669-1685.
- 2.American Society of Hospital Pharmacists Technical Assistance Bulletin on Handling Cytotoxic and Hazardous Drugs. *Am J Hosp Pharm.* 1990; 47(95): 1033-1049.
- 3.AMA Council Report. Guidelines for Handling Parenteral Antineoplastics. *JAMA.* 1985; 253 (11): 1590-1592.
- 4.Recommendations for the Safe Handling of Parenteral Antineoplastic Drugs. NIH Publication No. 83-2621. For sale by the Superintendent of Documents, US Government Printing Office, Washington, DC 20402.
- 5.National Study Commission on Cytotoxic Exposure - Recommendations for Handling Cytotoxic Agents. Available from Louis P. Jeffrey, Chairman, National Study Commission on Cytotoxic Exposure. Massachusetts College of Pharmacy and Allied Health Sciences, 179 Longwood Avenue, Boston, MA 02115.
- 6.Clinical Oncological Society of Australia. Guidelines and Recommendations for Safe Handling of Antineoplastic Agents. *Med J Austr.* 1983; 426-428.
- 7.Jones, RB, et al. Safe Handling of Chemotherapeutic Agents: A Report from the Mt. Sinai Medical Center. *CA-A Cancer Journal for Clinicians.* 1983; Sept/Oct: 258-263.

Prescribing Information as of

Manufactured by Aventis Pharma Rhone-Poulenc Rorer Exports Ltd.  
Dagenham, Essex RM10 7XS  
United Kingdom

Manufactured for  
**Aventis Pharmaceuticals Products Inc.**  
Bridgewater, NJ 08807 USA  
[www.aventispharma-us.com](http://www.aventispharma-us.com)