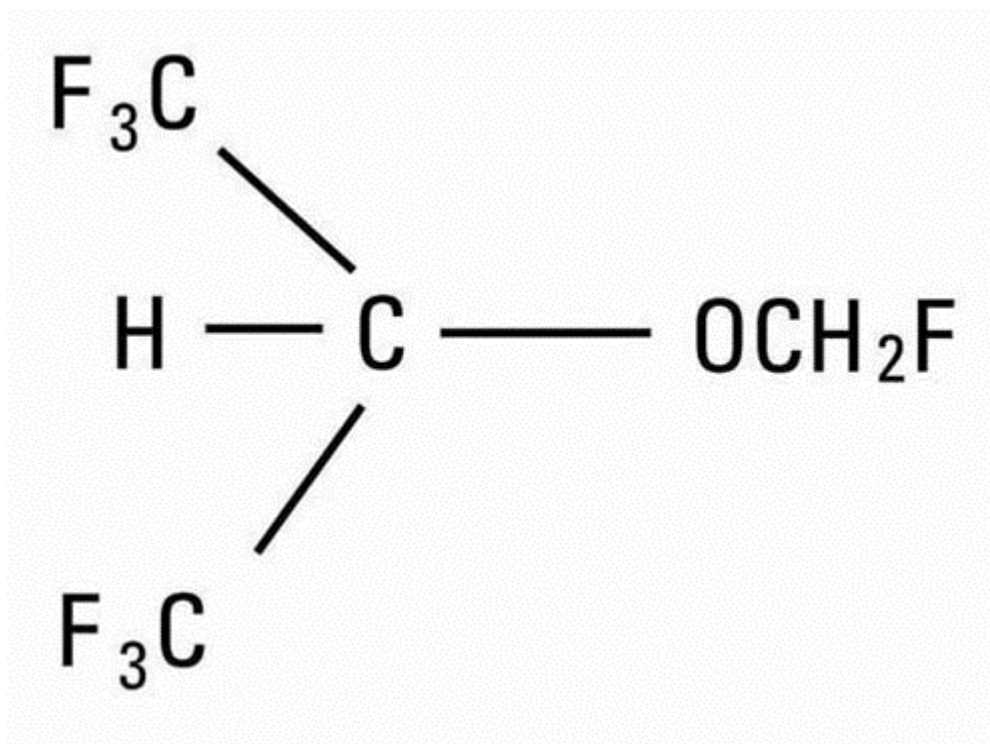


ULTANE®
(sevoflurane)
volatile liquid for inhalation

DESCRIPTION

ULTANE (sevoflurane), volatile liquid for inhalation, a nonflammable and nonexplosive liquid administered by vaporization, is a halogenated general inhalation anesthetic drug. Sevoflurane is fluoromethyl 2,2,2,-trifluoro-1-(trifluoromethyl) ethyl ether and its structural formula is:



Sevoflurane, Physical Constants are:

Molecular weight	200.05
Boiling point at 760 mm Hg	58.6°C
Specific gravity at 20°C	1.520 - 1.525
Vapor pressure in mm Hg	157 mm Hg at 20°C 197 mm Hg at 25°C 317 mm Hg at 36°C

Distribution Partition Coefficients at 37°C:

Blood/Gas	0.63 - 0.69
Water/Gas	0.36
Olive Oil/Gas	47 – 54
Brain/Gas	1.15

Mean Component/Gas Partition Coefficients at 25°C for Polymers Used Commonly in Medical Applications:

Conductive rubber	14.0
Butyl rubber	7.7
Polyvinylchloride	17.4
Polyethylene	1.3

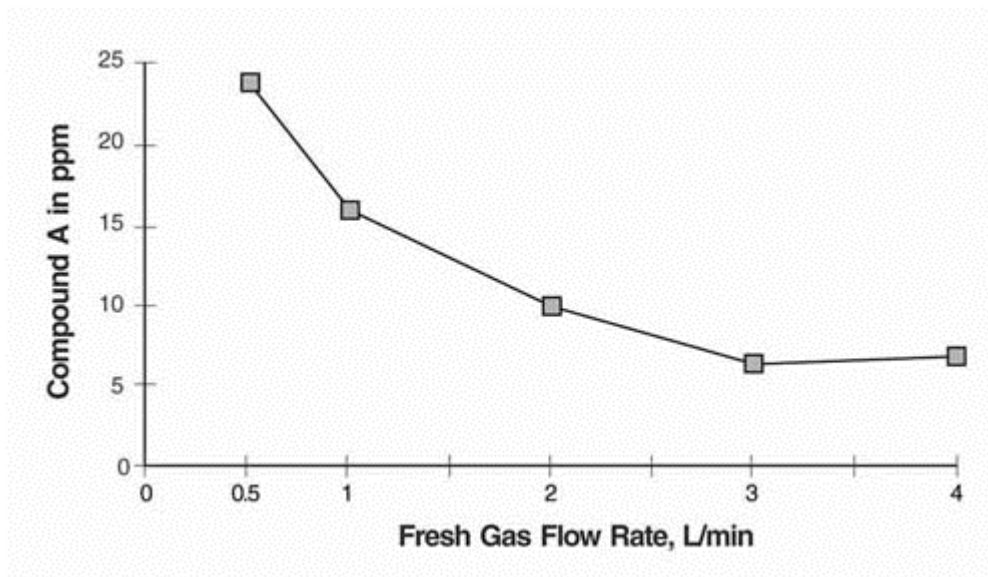
Sevoflurane is nonflammable and nonexplosive as defined by the requirements of International Electrotechnical Commission 601-2-13.

Sevoflurane is a clear, colorless, liquid containing no additives. Sevoflurane is not corrosive to stainless steel, brass, aluminum, nickel-plated brass, chrome-plated brass or copper beryllium. Sevoflurane is nonpungent. It is miscible with ethanol, ether, chloroform, and benzene, and it is slightly soluble in water. Sevoflurane is stable when stored under normal room lighting conditions according to instructions. No discernible degradation of sevoflurane occurs in the presence of strong acids or heat. When in contact with alkaline CO₂ absorbents (e.g. Baralyme[®] and to a lesser extent soda lime) within the anesthesia machine, sevoflurane can undergo degradation under certain conditions. Degradation of sevoflurane is minimal, and degradants are either undetectable or present in non-toxic amounts when used as directed with fresh absorbents. Sevoflurane degradation and subsequent degradant formation are enhanced by increasing absorbent temperature increased sevoflurane concentration, decreased fresh gas flow and desiccated CO₂ absorbents (especially with potassium hydroxide containing absorbents e.g. Baralyme).

Sevoflurane alkaline degradation occurs by two pathways. The first results from the loss of hydrogen fluoride with the formation of pentafluoroisopropenyl fluoromethyl ether, (PIFE, C₄H₂F₆O), also known as Compound A, and trace amounts of pentafluoromethoxy isopropyl fluoromethyl ether, (PMFE, C₅H₆F₆O), also known as Compound B. The second pathway for degradation of sevoflurane, which occurs primarily in the presence of desiccated CO₂ absorbents, is discussed later.

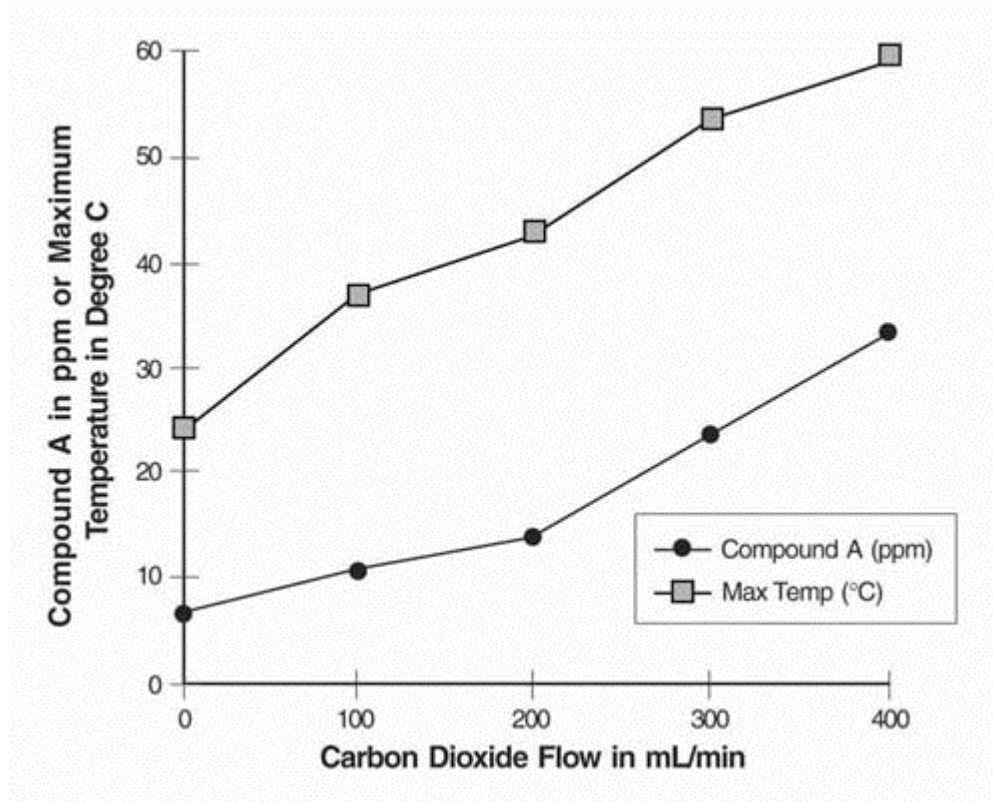
In the first pathway, the defluorination pathway, the production of degradants in the anesthesia circuit results from the extraction of the acidic proton in the presence of a strong base (KOH and/or NaOH) forming an alkene (Compound A) from sevoflurane similar to formation of 2-bromo-2-chloro-1,1-difluoro ethylene (BCDFE) from halothane. Laboratory simulations have shown that the concentration of these degradants is inversely correlated with the fresh gas flow rate (See Figure 1).

Figure 1. Fresh Gas Flow Rate versus Compound A Levels in a Circle Absorber System



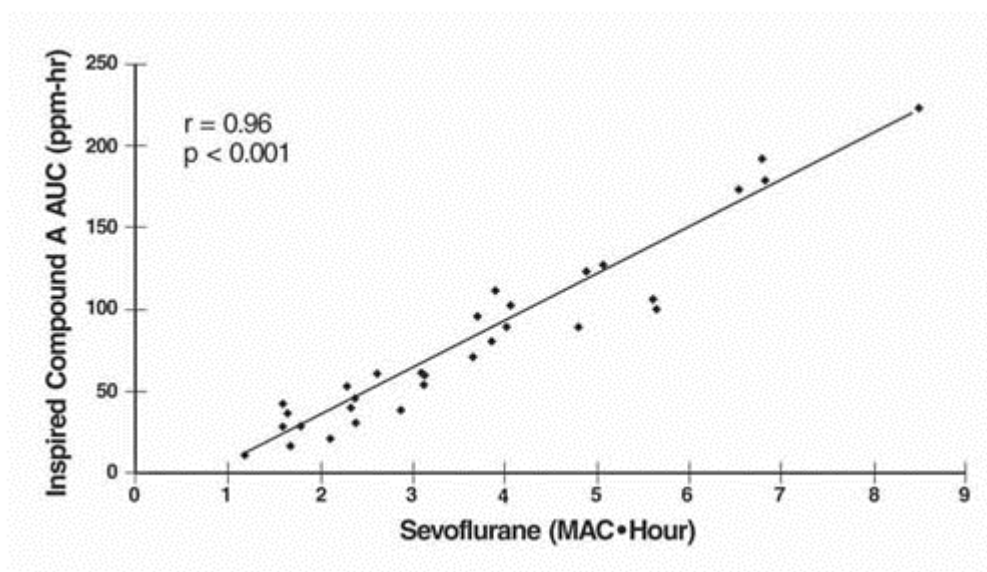
Since the reaction of carbon dioxide with absorbents is exothermic, the temperature increase will be determined by quantities of CO₂ absorbed, which in turn will depend on fresh gas flow in the anesthesia circle system, metabolic status of the patient, and ventilation. The relationship of temperature produced by varying levels of CO₂ and Compound A production is illustrated in the following *in vitro* simulation where CO₂ was added to a circle absorber system.

Figure 2. Carbon Dioxide Flow versus Compound A and Maximum Temperature



Compound A concentration in a circle absorber system increases as a function of increasing CO₂ absorbent temperature and composition (Baralyme producing higher levels than soda lime), increased body temperature, and increased minute ventilation, and decreasing fresh gas flow rates. It has been reported that the concentration of Compound A increases significantly with prolonged dehydration of Baralyme. Compound A exposure in patients also has been shown to rise with increased sevoflurane concentrations and duration of anesthesia. In a clinical study in which sevoflurane was administered to patients under low flow conditions for ≥ 2 hours at flow rates of 1 Liter/minute, Compound A levels were measured in an effort to determine the relationship between MAC hours and Compound A levels produced. The relationship between Compound A levels and sevoflurane exposure are shown in Figure 2a.

Figure 2a. ppm·hr versus MAC·hr at Flow Rate of 1 L/min



Compound A has been shown to be nephrotoxic in rats after exposures that have varied in duration from one to three hours. No histopathologic change was seen at a concentration of up to 270 ppm for one hour. Sporadic single cell necrosis of proximal tubule cells has been reported at a concentration of 114 ppm after a 3-hour exposure to Compound A in rats. The LC_{50} reported at 1 hour is 1050-1090 ppm (male-female) and, at 3 hours, 350-490 ppm (male-female).

An experiment was performed comparing sevoflurane plus 75 or 100 ppm Compound A with an active control to evaluate the potential nephrotoxicity of Compound A in non-human primates. A single 8-hour exposure of Sevoflurane in the presence of Compound A produced single-cell renal tubular degeneration and single-cell necrosis in cynomolgus monkeys. These changes are consistent with the increased urinary protein, glucose level and enzymic activity noted on days one and three on the clinical pathology evaluation. This nephrotoxicity produced by Compound A is dose and duration of exposure dependent.

At a fresh gas flow rate of 1 L/min, mean maximum concentrations of Compound A in the anesthesia circuit in clinical settings are approximately 20 ppm (0.002%) with soda lime and 30 ppm (0.003%) with Baralyme in adult patients; mean maximum concentrations in pediatric patients with soda lime are about half those found in adults. The highest concentration observed in a single patient with Baralyme was 61 ppm (0.0061%) and 32 ppm (0.0032%) with soda lime. The levels of Compound A at which toxicity occurs in humans is not known.

The second pathway for degradation of sevoflurane occurs primarily in the presence of desiccated CO_2 absorbents and leads to the dissociation of sevoflurane into hexafluoroisopropanol (HFIP) and formaldehyde. HFIP is inactive, non-genotoxic, rapidly

glucuronidated and cleared by the liver. Formaldehyde is present during normal metabolic processes. Upon exposure to a highly desiccated absorbent, formaldehyde can further degrade into methanol and formate. Formate can contribute to the formation of carbon monoxide in the presence of high temperature that can be associated with desiccated Baralyme[®]. Methanol can react with Compound A to form the methoxy addition product Compound B. Compound B can undergo further HF elimination to form Compounds C, D, and E.

Sevoflurane degradants were observed in the respiratory circuit of an experimental anesthesia machine using desiccated CO₂ absorbents and maximum sevoflurane concentrations (8%) for extended periods of time (> 2 hours). Concentrations of formaldehyde observed with desiccated soda lime in this experimental anesthesia respiratory circuit were consistent with levels that could potentially result in respiratory irritation. Although KOH containing CO₂ absorbents are no longer commercially available, in the laboratory experiments, exposure of sevoflurane to the desiccated KOH containing CO₂ absorbent, Baralyme, resulted in the detection of substantially greater degradant levels.

CLINICAL PHARMACOLOGY

Sevoflurane is an inhalational anesthetic agent for use in induction and maintenance of general anesthesia. Minimum alveolar concentration (MAC) of sevoflurane in oxygen for a 40-year-old adult is 2.1%. The MAC of sevoflurane decreases with age (see **DOSAGE AND ADMINISTRATION** for details).

Pharmacokinetics

Uptake and Distribution

Solubility

Because of the low solubility of sevoflurane in blood (blood/gas partition coefficient @ 37°C = 0.63-0.69), a minimal amount of sevoflurane is required to be dissolved in the blood before the alveolar partial pressure is in equilibrium with the arterial partial pressure. Therefore there is a rapid rate of increase in the alveolar (end-tidal) concentration (F_A) toward the inspired concentration (F_I) during induction.

Induction of Anesthesia

In a study in which seven healthy male volunteers were administered 70% N₂O/30%O₂ for 30 minutes followed by 1.0% sevoflurane and 0.6% isoflurane for another 30 minutes the F_A/F_I ratio was greater for sevoflurane than isoflurane at all time points. The time for the concentration in

the alveoli to reach 50% of the inspired concentration was 4-8 minutes for isoflurane and approximately 1 minute for sevoflurane.

F_A/F_I data from this study were compared with F_A/F_I data of other halogenated anesthetic agents from another study. When all data were normalized to isoflurane, the uptake and distribution of sevoflurane was shown to be faster than isoflurane and halothane, but slower than desflurane. The results are depicted in Figure 3.

Recovery from Anesthesia

The low solubility of sevoflurane facilitates rapid elimination via the lungs. The rate of elimination is quantified as the rate of change of the alveolar (end-tidal) concentration following termination of anesthesia (F_A), relative to the last alveolar concentration (F_{A0}) measured immediately before discontinuance of the anesthetic. In the healthy volunteer study described above, rate of elimination of sevoflurane was similar compared with desflurane, but faster compared with either halothane or isoflurane. These results are depicted in Figure 4.

Figure 3. Ratio of Concentration of Anesthetic in Alveolar Gas to Inspired Gas

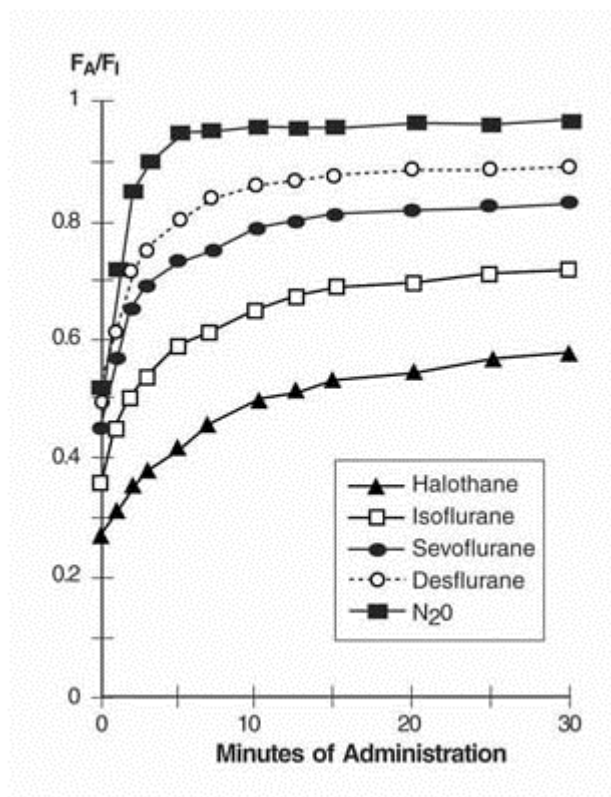
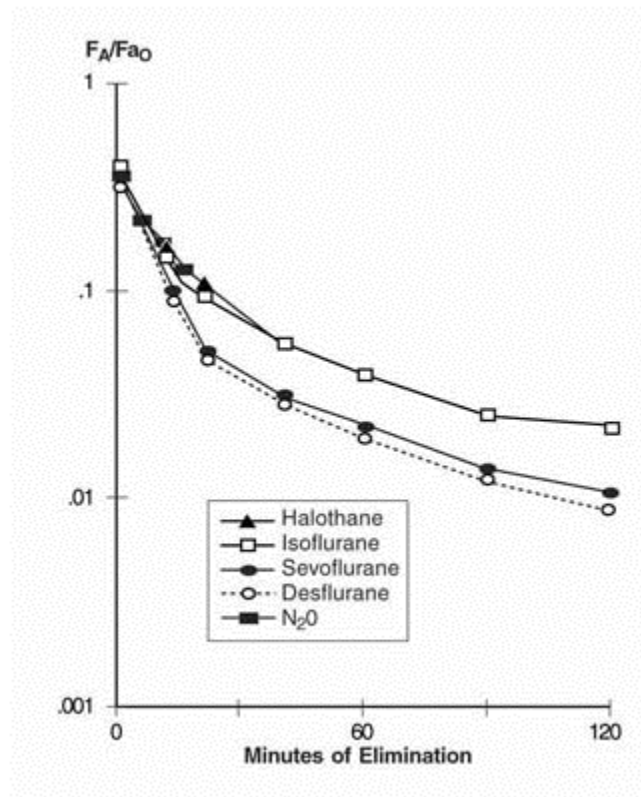


Figure 4. Concentration of Anesthetic in Alveolar Gas Following Termination of Anesthesia



Yasuda N, Lockhart S, Eger EI II, et al: Comparison of kinetics of sevoflurane and isoflurane in humans. *Anesth Analg* 72:316, 1991.

Protein Binding

The effects of sevoflurane on the displacement of drugs from serum and tissue proteins have not been investigated. Other fluorinated volatile anesthetics have been shown to displace drugs from serum and tissue proteins *in vitro*. The clinical significance of this is unknown. Clinical studies have shown no untoward effects when sevoflurane is administered to patients taking drugs that are highly bound and have a small volume of distribution (e.g., phenytoin).

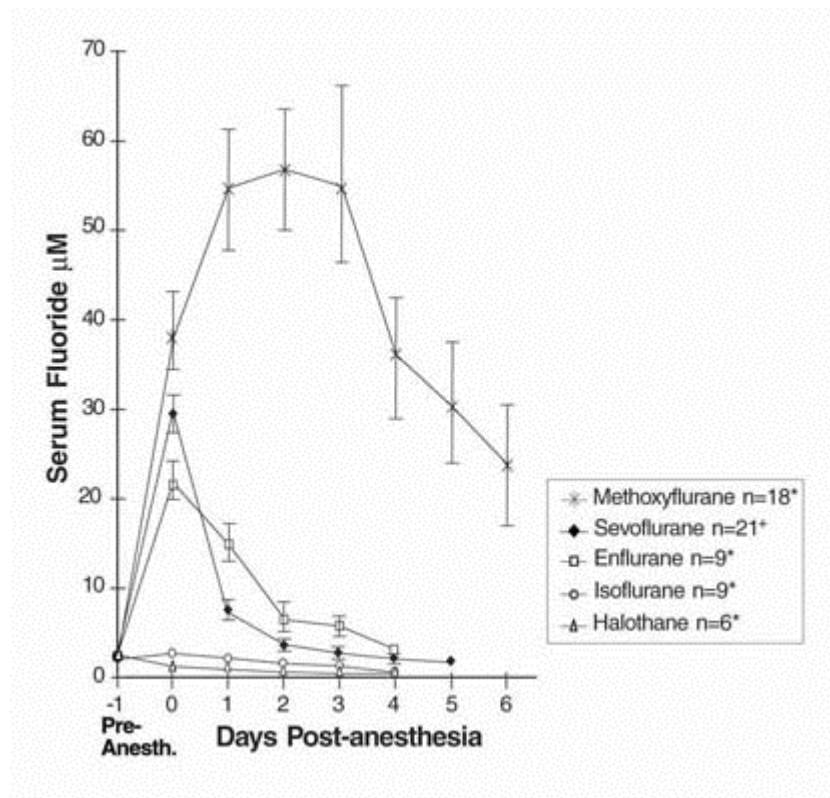
Metabolism

Sevoflurane is metabolized by cytochrome P450 2E1, to hexafluoroisopropanol (HFIP) with release of inorganic fluoride and CO_2 . Once formed HFIP is rapidly conjugated with glucuronic acid and eliminated as a urinary metabolite. No other metabolic pathways for sevoflurane have

been identified. *In vivo* metabolism studies suggest that approximately 5% of the sevoflurane dose may be metabolized.

Cytochrome P450 2E1 is the principal isoform identified for sevoflurane metabolism and this may be induced by chronic exposure to isoniazid and ethanol. This is similar to the metabolism of isoflurane and enflurane and is distinct from that of methoxyflurane which is metabolized via a variety of cytochrome P450 isoforms. The metabolism of sevoflurane is not inducible by barbiturates. As shown in Figure 5, inorganic fluoride concentrations peak within 2 hours of the end of sevoflurane anesthesia and return to baseline concentrations within 48 hours post-anesthesia in the majority of cases (67%). The rapid and extensive pulmonary elimination of sevoflurane minimizes the amount of anesthetic available for metabolism.

Figure 5. Serum Inorganic Fluoride Concentrations for Sevoflurane and Other Volatile Anesthetics



Cousins M.J., Greenstein L.R., Hitt B.A., et al: Metabolism and renal effects of enflurane in man. *Anesthesiology* 44:44; 1976* and *Sevo-93-044*⁺.

Legend:

Pre-Anesth. = Pre-anesthesia

Elimination

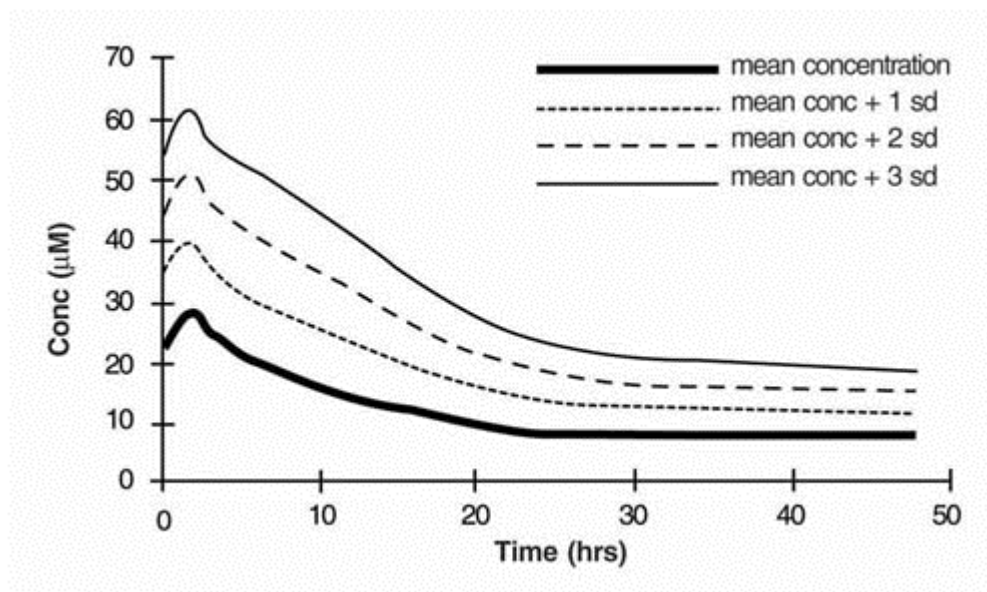
Up to 3.5% of the sevoflurane dose appears in the urine as inorganic fluoride. Studies on fluoride indicate that up to 50% of fluoride clearance is nonrenal (via fluoride being taken up into bone).

Pharmacokinetics of Fluoride Ion

Fluoride ion concentrations are influenced by the duration of anesthesia, the concentration of sevoflurane administered, and the composition of the anesthetic gas mixture. In studies where anesthesia was maintained purely with sevoflurane for periods ranging from 1 to 6 hours, peak fluoride concentrations ranged between 12 μM and 90 μM . As shown in Figure 6, peak concentrations occur within 2 hours of the end of anesthesia and are less than 25 μM (475 ng/mL) for the majority of the population after 10 hours. The half-life is in the range of 15-23 hours.

It has been reported that following administration of methoxyflurane, serum inorganic fluoride concentrations $> 50 \mu\text{M}$ were correlated with the development of vasopressin-resistant, polyuric, renal failure. In clinical trials with sevoflurane, there were no reports of toxicity associated with elevated fluoride ion levels.

Figure 6. Fluoride Ion Concentrations Following Administration of Sevoflurane (mean MAC = 1.27, mean duration = 2.06 hr) Mean Fluoride Ion Concentrations (n = 48)



Fluoride Concentrations After Repeat Exposure and in Special Populations

Fluoride concentrations have been measured after single, extended, and repeat exposure to sevoflurane in normal surgical and special patient populations, and pharmacokinetic parameters were determined.

Compared with healthy individuals, the fluoride ion half-life was prolonged in patients with renal impairment, but not in the elderly. A study in 8 patients with hepatic impairment suggests a slight prolongation of the half-life. The mean half-life in patients with renal impairment averaged approximately 33 hours (range 21-61 hours) as compared to a mean of approximately 21 hours (range 10-48 hours) in normal healthy individuals. The mean half-life in the elderly (greater than 65 years) approximated 24 hours (range 18-72 hours). The mean half-life in individuals with hepatic impairment was 23 hours (range 16-47 hours). Mean maximal fluoride values (C_{max}) determined in individual studies of special populations are displayed below.

Table 1. Fluoride Ion Estimates in Special Populations Following Administration of Sevoflurane

	n	Age (yr)	Duration (hr)	Dose (MAC·hr)	C_{max} (μM)
PEDIATRIC PATIENTS					
<i>Anesthetic</i>					
Sevoflurane-O ₂	76	0-11	0.8	1.1	12.6
Sevoflurane-O ₂	40	1-11	2.2	3.0	16.0
Sevoflurane/N ₂ O	25	5-13	1.9	2.4	21.3
Sevoflurane/N ₂ O	42	0-18	2.4	2.2	18.4
Sevoflurane/N ₂ O	40	1-11	2.0	2.6	15.5
ELDERLY	33	65-93	2.6	1.4	25.6
RENAL	21	29-83	2.5	1.0	26.1
HEPATIC	8	42-79	3.6	2.2	30.6
OBESE	35	24-73	3.0	1.7	38.0

n = number of patients studied.

Pharmacodynamics

Changes in the depth of sevoflurane anesthesia rapidly follow changes in the inspired concentration.

In the sevoflurane clinical program, the following recovery variables were evaluated:

1. Time to events measured from the end of study drug:

- Time to removal of the endotracheal tube (extubation time)
- Time required for the patient to open his/her eyes on verbal command (emergence time)
- Time to respond to simple command (e.g., squeeze my hand) or demonstrates purposeful movement (response to command time, orientation time)

2. Recovery of cognitive function and motor coordination was evaluated based on:

- psychomotor performance tests (Digit Symbol Substitution Test [DSST], Treiger Dot Test)
- the results of subjective (Visual Analog Scale [VAS]) and objective (objective pain-discomfort scale [OPDS]) measurements
- time to administration of the first post-anesthesia analgesic medication
- assessments of post-anesthesia patient status

3. Other recovery times were:

- time to achieve an Aldrete Score of ≥ 8
- time required for the patient to be eligible for discharge from the recovery area, per standard criteria at site
- time when the patient was eligible for discharge from the hospital
- time when the patient was able to sit up or stand without dizziness

Some of these variables are summarized as follows:

Table 2. Induction and Recovery Variables for Evaluable Pediatric Patients in Two Comparative Studies: Sevoflurane versus Halothane

Time to End-Point (min)	Sevoflurane Mean \pm SEM	Halothane Mean \pm SEM
Induction	2.0 \pm 0.2 (n = 294)	2.7 \pm 0.2 (n = 252)
Emergence	11.3 \pm 0.7 (n = 293)	15.8 \pm 0.8 (n = 252)
Response to command	13.7 \pm 1.0 (n = 271)	19.3 \pm 1.1 (n = 230)
First analgesia	52.2 \pm 8.5 (n = 216)	67.6 \pm 10.6 (n = 150)
Eligible for recovery discharge	76.5 \pm 2.0 (n = 292)	81.1 \pm 1.9 (n = 246)

n = number of patients with recording of events.

Table 3. Recovery Variables for Evaluable Adult Patients in Two Comparative Studies: Sevoflurane versus Isoflurane

Time to Parameter: (min)	Sevoflurane Mean \pm SEM	Isoflurane Mean \pm SEM
Emergence	7.7 \pm 0.3 (n = 395)	9.1 \pm 0.3 (n = 348)
Response to command	8.1 \pm 0.3 (n = 395)	9.7 \pm 0.3 (n = 345)
First analgesia	42.7 \pm 3.0 (n = 269)	52.9 \pm 4.2 (n = 228)
Eligible for recovery discharge	87.6 \pm 5.3 (n = 244)	79.1 \pm 5.2 (n = 252)

n = number of patients with recording of recovery events.

Table 4. Meta-Analyses for Induction and Emergence Variables for Evaluable Adult Patients in Comparative

Studies: Sevoflurane versus Propofol

Parameter	No. of Studies	Sevoflurane Mean \pm SEM	Propofol Mean \pm SEM
Mean maintenance anesthesia exposure	3	1.0 MAC·hr. \pm 0.8 (n = 259)	7.2 mg/kg/hr \pm 2.6 (n = 258)
Time to induction: (min)	1	3.1 \pm 0.18* (n = 93)	2.2 \pm 0.18** (n = 93)
Time to emergence: (min)	3	8.6 \pm 0.57 (n = 255)	11.0 \pm 0.57 (n = 260)
Time to respond to command: (min)	3	9.9 \pm 0.60 (n = 257)	12.1 \pm 0.60 (n = 260)
Time to first analgesia: (min)	3	43.8 \pm 3.79 (n = 177)	57.9 \pm 3.68 (n = 179)
Time to eligibility for recovery discharge: (min)	3	116.0 \pm 4.15 (n = 257)	115.6 \pm 3.98 (n = 261)

* Propofol induction of one sevoflurane group = mean of 178.8 mg \pm 72.5 SD (n = 165)

** Propofol induction of all propofol groups = mean of 170.2 mg \pm 60.6 SD (n = 245)

n = number of patients with recording of events.

Cardiovascular Effects

Sevoflurane was studied in 14 healthy volunteers (18-35 years old) comparing sevoflurane-O₂ (Sevo/O₂) to sevoflurane-N₂O/O₂ (Sevo/N₂O/O₂) during 7 hours of anesthesia. During controlled ventilation, hemodynamic parameters measured are shown in Figures 7-10:

Figure 7. Heart Rate

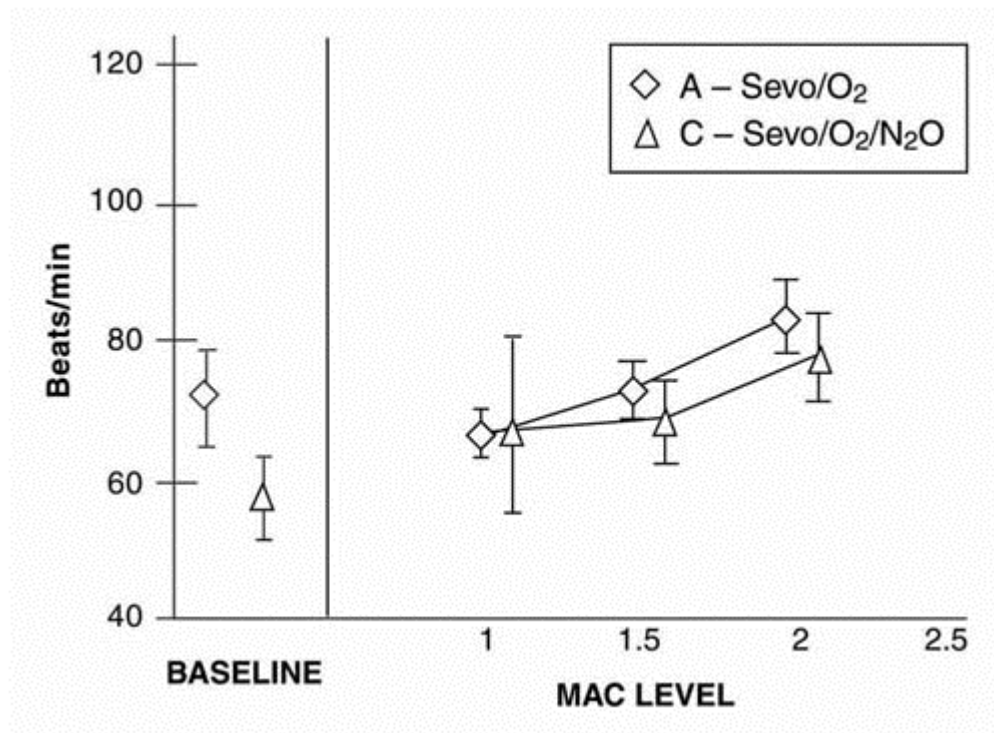


Figure 8. Mean Arterial Pressure

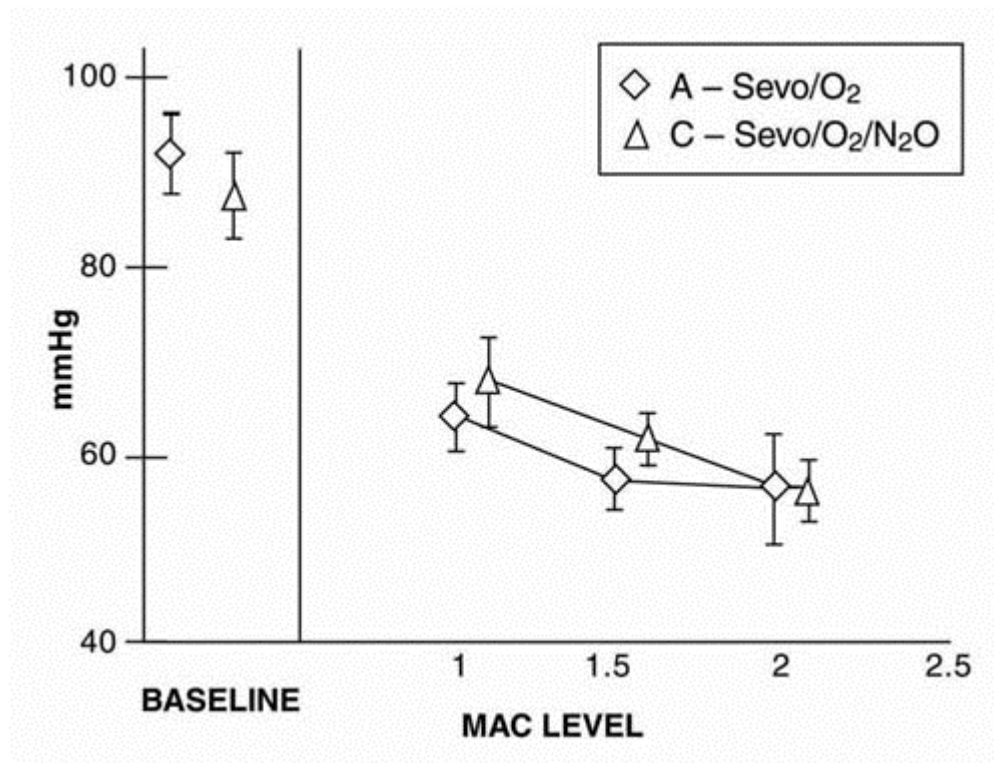


Figure 9. Systemic Vascular Resistance

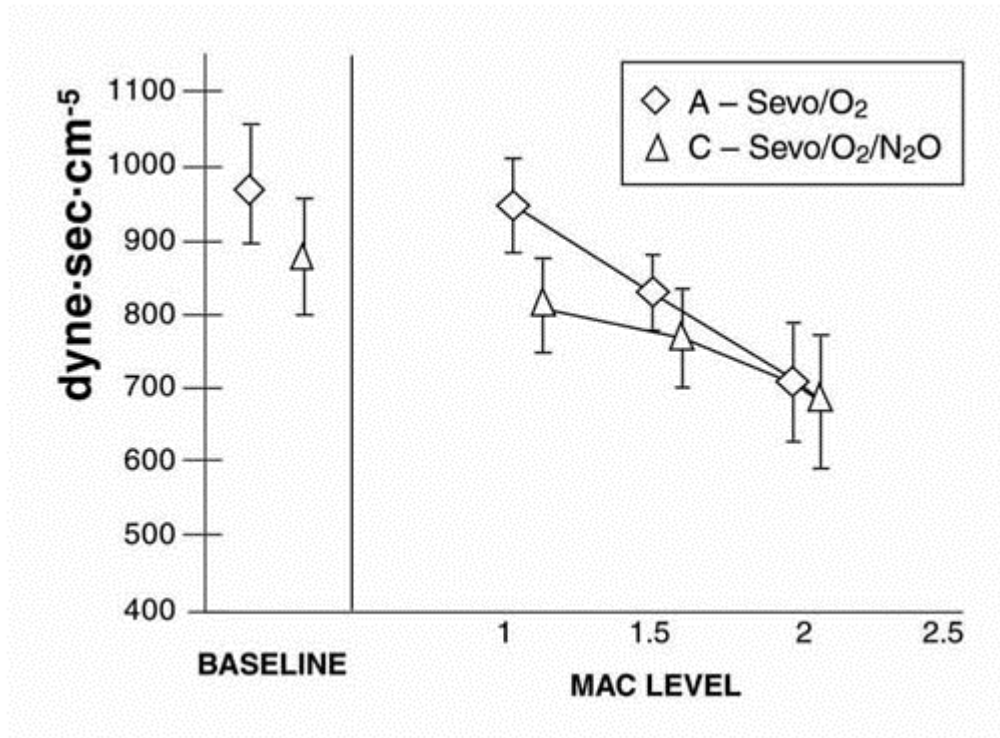
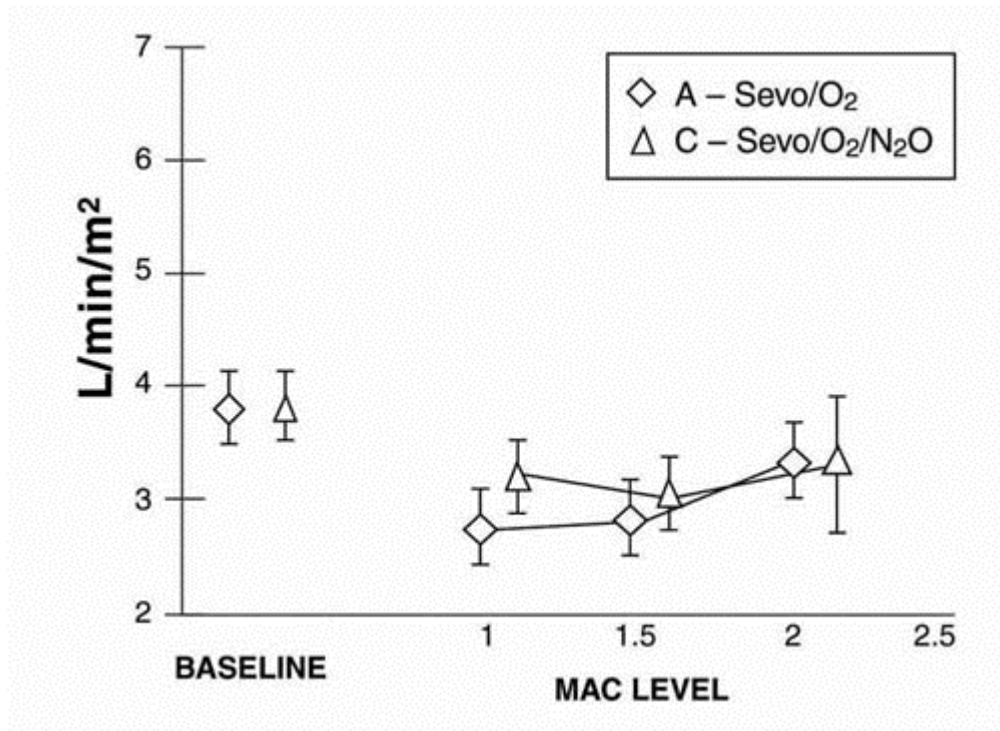


Figure 10. Cardiac Index



Sevoflurane is a dose-related cardiac depressant. Sevoflurane does not produce increases in heart rate at doses less than 2 MAC.

A study investigating the epinephrine induced arrhythmogenic effect of sevoflurane versus isoflurane in adult patients undergoing transsphenoidal hypophysectomy demonstrated that the threshold dose of epinephrine (i.e., the dose at which the first sign of arrhythmia was observed) producing multiple ventricular arrhythmias was 5 mcg/kg with both sevoflurane and isoflurane. Consequently, the interaction of sevoflurane with epinephrine appears to be equal to that seen with isoflurane.

Clinical Trials

Sevoflurane was administered to a total of 3185 patients prior to sevoflurane NDA submission. The types of patients are summarized as follows:

Table 5. Patients Receiving Sevoflurane in Clinical Trials

Type of Patients	Number	Studied
ADULT	2223	
Cesarean Delivery		29
Cardiovascular and patients at risk of myocardial ischemia		246
Neurosurgical		22
Hepatic impairment		8
Renal impairment		35
PEDIATRIC	962	

Clinical experience with these patients is described below.

Adult Anesthesia

The efficacy of sevoflurane in comparison to isoflurane, enflurane, and propofol was investigated in 3 outpatient and 25 inpatient studies involving 3591 adult patients. Sevoflurane was found to be comparable to isoflurane, enflurane, and propofol for the maintenance of anesthesia in adult patients. Patients administered sevoflurane showed shorter times (statistically significant) to some recovery events (extubation, response to command, and orientation) than patients who received isoflurane or propofol.

Mask Induction

Sevoflurane has a nonpungent odor and does not cause respiratory irritability. Sevoflurane is suitable for mask induction in adults. In 196 patients, mask induction was smooth and rapid, with complications occurring with the following frequencies: cough, 6%; breathholding, 6%; agitation, 6%; laryngospasm, 5%.

Ambulatory Surgery

Sevoflurane was compared to isoflurane and propofol for maintenance of anesthesia supplemented with N₂O in two studies involving 786 adult (18-84 years of age) ASA Class I, II, or III patients. Shorter times to emergence and response to commands (statistically significant) were observed with sevoflurane compared to isoflurane and propofol.

Table 6. Recovery Parameters in Two Outpatient Surgery Studies: Least Squares Mean ± SEM

	Sevoflurane/N ₂ O	Isoflurane/N ₂ O	Sevoflurane/N ₂ O	Propofol/N ₂ O
Mean Maintenance	0.64 ± 0.03	0.66 ± 0.03	0.8 ± 0.5	7.3 ± 2.3
Anesthesia	MAC·hr.	MAC·hr.	MAC·hr.	mg/kg/hr.
Exposure ± SD	(n = 245)	(n = 249)	(n = 166)	(n = 166)
Time to Emergence (min)	8.2 ± 0.4 (n = 246)	9.3 ± 0.3 (n = 251)	8.3 ± 0.7 (n = 137)	10.4 ± 0.7 (n = 142)
Time to Respond to Commands (min)	8.5 ± 0.4 (n = 246)	9.8 ± 0.4 (n = 248)	9.1 ± 0.7 (n = 139)	11.5 ± 0.7 (n = 143)
Time to First Analgesia (min)	45.9 ± 4.7 (n = 160)	59.1 ± 6.0 (n = 252)	46.1 ± 5.4 (n = 83)	60.0 ± 4.7 (n = 88)
Time to Eligibility for Discharge from Recovery Area (min)	87.6 ± 5.3 (n = 244)	79.1 ± 5.2 (n = 252)	103.1 ± 3.8 (n = 139)	105.1 ± 3.7 (n = 143)

n = number of patients with recording of recovery events.

Inpatient Surgery

Sevoflurane was compared to isoflurane and propofol for maintenance of anesthesia supplemented with N₂O in two multicenter studies involving 741 adult ASA Class I, II or III (18-92 years of age) patients. Shorter times to emergence, command response, and first post-anesthesia analgesia (statistically significant) were observed with sevoflurane compared to isoflurane and propofol.

Table 7. Recovery Parameters in Two Inpatient Surgery Studies: Least Squares Mean ± SEM

	Sevoflurane/N ₂ O	Isoflurane/N ₂ O	Sevoflurane/N ₂ O	Propofol/N ₂ O
Mean Maintenance	1.27 MAC·hr.	1.58 MAC·hr.	1.43 MAC·hr.	7.0 mg/kg/hr
Anesthesia	± 0.05	± 0.06	± 0.94	± 2.9
Exposure ± SD	(n = 271)	(n = 282)	(n = 93)	(n = 92)
Time to Emergence (min)	11.0 ± 0.6 (n = 270)	16.4 ± 0.6 (n = 281)	8.8 ± 1.2 (n = 92)	13.2 ± 1.2 (n = 92)
Time to Respond to Commands (min)	12.8 ± 0.7 (n = 270)	18.4 ± 0.7 (n = 281)	11.0 ± 1.20 (n = 92)	14.4 ± 1.21 (n = 91)
Time to First Analgesia (min)	46.1 ± 3.0 (n = 233)	55.4 ± 3.2 (n = 242)	37.8 ± 3.3 (n = 82)	49.2 ± 3.3 (n = 79)
Time to Eligibility for Discharge from Recovery Area (min)	139.2 ± 15.6 (n = 268)	165.9 ± 16.3 (n = 282)	148.4 ± 8.9 (n = 92)	141.4 ± 8.9 (n = 92)

n = number of patients with recording of recovery events.

Pediatric Anesthesia

The concentration of sevoflurane required for maintenance of general anesthesia is age-dependent (see **DOSAGE AND ADMINISTRATION**). Sevoflurane or halothane was used to anesthetize 1620 pediatric patients aged 1 day to 18 years, and ASA physical status I or II (948 sevoflurane, 672 halothane). In one study involving 90 infants and children, there were no clinically significant decreases in heart rate compared to awake values at 1 MAC. Systolic blood pressure decreased 15-20% in comparison to awake values following administration of 1 MAC sevoflurane; however, clinically significant hypotension requiring immediate intervention did not occur. Overall incidences of bradycardia [more than 20 beats/min lower than normal (80 beats/min)] in comparative studies was 3% for sevoflurane and 7% for halothane. Patients who received sevoflurane had slightly faster emergence times (12 vs. 19 minutes), and a higher incidence of post-anesthesia agitation (14% vs. 10%).

Sevoflurane (n = 91) was compared to halothane (n = 89) in a single-center study for elective repair or palliation of congenital heart disease. The patients ranged in age from 9 days to 11.8 years with an ASA physical status of II, III, and IV (18%, 68%, and 13% respectively). No significant differences were demonstrated between treatment groups with respect to the primary outcome measures: cardiovascular decompensation and severe arterial desaturation. Adverse event data was limited to the study outcome variables collected during surgery and before institution of cardiopulmonary bypass.

Mask Induction

Sevoflurane has a nonpungent odor and is suitable for mask induction in pediatric patients. In controlled pediatric studies in which mask induction was performed, the incidence of induction events is shown below (see **ADVERSE REACTIONS**).

Table 8. Incidence of Pediatric Induction Events

	Sevoflurane (n = 836)	Halothane (n = 660)
Agitation	14%	11%
Cough	6%	10%
Breathholding	5%	6%
Secretions	3%	3%
Laryngospasm	2%	2%
Bronchospasm	< 1%	0%

n = number of patients.

Ambulatory Surgery

Sevoflurane (n = 518) was compared to halothane (n = 382) for the maintenance of anesthesia in pediatric outpatients. All patients received N₂O and many received fentanyl, midazolam, bupivacaine, or lidocaine. The time to eligibility for discharge from post-anesthesia care units was similar between agents (see **CLINICAL PHARMACOLOGY** and **ADVERSE REACTIONS**).

Cardiovascular Surgery

Coronary Artery Bypass Graft (CABG) Surgery

Sevoflurane was compared to isoflurane as an adjunct with opioids in a multicenter study of 273 patients undergoing CABG surgery. Anesthesia was induced with midazolam (0.1-0.3 mg/kg); vecuronium (0.1-0.2 mg/kg), and fentanyl (5-15 mcg/kg). Both isoflurane and sevoflurane were administered at loss of consciousness in doses of 1.0 MAC and titrated until the beginning of cardiopulmonary bypass to a maximum of 2.0 MAC. The total dose of fentanyl did not exceed 25 mcg/kg. The average MAC dose was 0.49 for sevoflurane and 0.53 for isoflurane. There were no significant differences in hemodynamics, cardioactive drug use, or ischemia incidence between the two groups. Outcome was also equivalent. In this small multicenter study, sevoflurane appears to be as effective and as safe as isoflurane for supplementation of opioid anesthesia for coronary bypass grafting.

Non-Cardiac Surgery Patients at Risk for Myocardial Ischemia

Sevoflurane-N₂O was compared to isoflurane-N₂O for maintenance of anesthesia in a multicenter study in 214 patients, age 40-87 years who were at mild-to-moderate risk for myocardial ischemia and were undergoing elective non-cardiac surgery. Forty-six percent (46%) of the operations were cardiovascular, with the remainder evenly divided between gastrointestinal and musculoskeletal and small numbers of other surgical procedures. The average duration of surgery was less than 2 hours. Anesthesia induction usually was performed with thiopental (2-5 mg/kg) and fentanyl (1-5 mcg/kg). Vecuronium (0.1-0.2 mg/kg) was also administered to facilitate intubation, muscle relaxation or immobility during surgery. The average MAC dose was 0.49 for both anesthetics. There was no significant difference between the anesthetic regimens for intraoperative hemodynamics, cardioactive drug use, or ischemic incidents, although only 83 patients in the sevoflurane group and 85 patients in the isoflurane group were successfully monitored for ischemia. The outcome was also equivalent in terms of adverse events, death, and postoperative myocardial infarction. Within the limits of this small multicenter study in patients at mild-to-moderate risk for myocardial ischemia, sevoflurane was a satisfactory equivalent to isoflurane in providing supplemental inhalation anesthesia to intravenous drugs.

Cesarean Section

Sevoflurane (n = 29) was compared to isoflurane (n = 27) in ASA Class I or II patients for the maintenance of anesthesia during cesarean section. Newborn evaluations and recovery events were recorded. With both anesthetics, Apgar scores averaged 8 and 9 at 1 and 5 minutes, respectively.

Use of sevoflurane as part of general anesthesia for elective cesarean section produced no untoward effects in mother or neonate. Sevoflurane and isoflurane demonstrated equivalent recovery characteristics. There was no difference between sevoflurane and isoflurane with regard to the effect on the newborn, as assessed by Apgar Score and Neurological and Adaptive Capacity Score (average = 29.5). The safety of sevoflurane in labor and vaginal delivery has not been evaluated.

Neurosurgery

Three studies compared sevoflurane to isoflurane for maintenance of anesthesia during neurosurgical procedures. In a study of 20 patients, there was no difference between sevoflurane and isoflurane with regard to recovery from anesthesia. In 2 studies, a total of 22 patients with intracranial pressure (ICP) monitors received either sevoflurane or isoflurane. There was no difference between sevoflurane and isoflurane with regard to ICP response to inhalation of 0.5, 1.0, and 1.5 MAC inspired concentrations of volatile agent during N₂O-O₂-fentanyl anesthesia. During progressive hyperventilation from PaCO₂ = 40 to PaCO₂ = 30, ICP response to hypocarbia was preserved with sevoflurane at both 0.5 and 1.0 MAC concentrations. In patients at risk for elevations of ICP, sevoflurane should be administered cautiously in conjunction with ICP-reducing maneuvers such as hyperventilation.

Hepatic Impairment

A multicenter study (2 sites) compared the safety of sevoflurane and isoflurane in 16 patients with mild-to-moderate hepatic impairment utilizing the lidocaine MEGX assay for assessment of hepatocellular function. All patients received intravenous propofol (1-3 mg/kg) or thiopental (2-7 mg/kg) for induction and succinylcholine, vecuronium, or atracurium for intubation. Sevoflurane or isoflurane was administered in either 100% O₂ or up to 70% N₂O/O₂. Neither drug adversely affected hepatic function. No serum inorganic fluoride level exceeded 45 μM/L, but sevoflurane patients had prolonged terminal disposition of fluoride, as evidenced by longer inorganic fluoride half-life than patients with normal hepatic function (23 hours vs. 10-48 hours).

Renal Impairment

Sevoflurane was evaluated in renally impaired patients with baseline serum creatinine > 1.5 mg/dL. Fourteen patients who received sevoflurane were compared with 12 patients who received isoflurane. In another study, 21 patients who received sevoflurane were compared with 20 patients who received enflurane. Creatinine levels increased in 7% of patients who received sevoflurane, 8% of patients who received isoflurane, and 10% of patients who received enflurane. Because of the small number of patients with renal insufficiency (baseline serum creatinine greater than 1.5 mg/dL) studied, the safety of sevoflurane administration in this group has not yet been fully established. Therefore, sevoflurane should be used with caution in patients with renal insufficiency (see **WARNINGS**).

INDICATIONS AND USAGE

Sevoflurane is indicated for induction and maintenance of general anesthesia in adult and pediatric patients for inpatient and outpatient surgery.

Sevoflurane should be administered only by persons trained in the administration of general anesthesia. Facilities for maintenance of a patent airway, artificial ventilation, oxygen enrichment, and circulatory resuscitation must be immediately available. Since level of anesthesia may be altered rapidly, only vaporizers producing predictable concentrations of sevoflurane should be used.

CONTRAINDICATIONS

Sevoflurane can cause malignant hyperthermia. It should not be used in patients with known sensitivity to sevoflurane or to other halogenated agents nor in patients with known or suspected susceptibility to malignant hyperthermia.

WARNINGS

Although data from controlled clinical studies at low flow rates are limited, findings taken from patient and animal studies suggest that there is a potential for renal injury which is presumed due to Compound A. Animal and human studies demonstrate that sevoflurane administered for more than 2 MAC·hours and at fresh gas flow rates of < 2 L/min may be associated with proteinuria and glycosuria.

While a level of Compound A exposure at which clinical nephrotoxicity might be expected to occur has not been established, it is prudent to consider all of the factors leading to Compound A exposure in humans, especially duration of exposure, fresh gas flow rate, and concentration of sevoflurane. During sevoflurane anesthesia the clinician should adjust inspired concentration and fresh gas flow rate to minimize exposure to Compound A. To minimize exposure to Compound

A, sevoflurane exposure should not exceed 2 MAC·hours at flow rates of 1 to < 2 L/min. Fresh gas flow rates < 1 L/min are not recommended.

Because clinical experience in administering sevoflurane to patients with renal insufficiency (creatinine > 1.5 mg/dL) is limited, its safety in these patients has not been established.

Sevoflurane may be associated with glycosuria and proteinuria when used for long procedures at low flow rates. The safety of low flow sevoflurane on renal function was evaluated in patients with normal preoperative renal function. One study compared sevoflurane (N = 98) to an active control (N = 90) administered for ≥ 2 hours at a fresh gas flow rate of ≤ 1 Liter/minute. Per study defined criteria (Hou et al.) one patient in the sevoflurane group developed elevations of creatinine, in addition to glycosuria and proteinuria. This patient received sevoflurane at fresh gas flow rates of ≤ 800 mL/minute. Using these same criteria, there were no patients in the active control group who developed treatment emergent elevations in serum creatinine.

Sevoflurane may present an increased risk in patients with known sensitivity to volatile halogenated anesthetic agents. KOH containing CO₂ absorbents are not recommended for use with sevoflurane.

Reports of QT prolongation, associated with torsade de pointes (in exceptional cases, fatal), have been received. Caution should be exercised when administering sevoflurane to susceptible patients (e.g. patients with congenital Long QT Syndrome or patients taking drugs that can prolong the QT interval).

Malignant Hyperthermia

In susceptible individuals, potent inhalation anesthetic agents, including sevoflurane, may trigger a skeletal muscle hypermetabolic state leading to high oxygen demand and the clinical syndrome known as malignant hyperthermia. Sevoflurane can induce malignant hyperthermia in genetically susceptible individuals, such as those with certain inherited ryanodine receptor mutations. The clinical syndrome is signaled by hypercapnia, and may include muscle rigidity, tachycardia, tachypnea, cyanosis, arrhythmias, and/or unstable blood pressure. Some of these nonspecific signs may also appear during light anesthesia, acute hypoxia, hypercapnia, and hypovolemia.

In clinical trials, one case of malignant hyperthermia was reported. In addition, there have been postmarketing reports of malignant hyperthermia. Some of these cases have been fatal.

Treatment of malignant hyperthermia includes discontinuation of triggering agents (e.g., sevoflurane), administration of intravenous dantrolene sodium (consult prescribing information

for intravenous dantrolene sodium for additional information on patient management), and application of supportive therapy. Supportive therapy may include efforts to restore body temperature, respiratory and circulatory support as indicated, and management of electrolyte-fluid-acid-base abnormalities. Renal failure may appear later, and urine flow should be monitored and sustained if possible.

Perioperative Hyperkalemia

Use of inhaled anesthetic agents has been associated with rare increases in serum potassium levels that have resulted in cardiac arrhythmias and death in pediatric patients during the postoperative period. Patients with latent as well as overt neuromuscular disease, particularly Duchenne muscular dystrophy, appear to be most vulnerable. Concomitant use of succinylcholine has been associated with most, but not all, of these cases. These patients also experienced significant elevations in serum creatine kinase levels and, in some cases, changes in urine consistent with myoglobinuria. Despite the similarity in presentation to malignant hyperthermia, none of these patients exhibited signs or symptoms of muscle rigidity or hypermetabolic state. Early and aggressive intervention to treat the hyperkalemia and resistant arrhythmias is recommended; as is subsequent evaluation for latent neuromuscular disease.

PRECAUTIONS

During the maintenance of anesthesia, increasing the concentration of sevoflurane produces dose-dependent decreases in blood pressure. Due to sevoflurane's insolubility in blood, these hemodynamic changes may occur more rapidly than with other volatile anesthetics. Excessive decreases in blood pressure or respiratory depression may be related to depth of anesthesia and may be corrected by decreasing the inspired concentration of sevoflurane.

Rare cases of seizures have been reported in association with sevoflurane use (see **PRECAUTIONS - Pediatric Use** and **ADVERSE REACTIONS**).

The recovery from general anesthesia should be assessed carefully before a patient is discharged from the post-anesthesia care unit.

Drug Interactions

In clinical trials, no significant adverse reactions occurred with other drugs commonly used in the perioperative period, including: central nervous system depressants, autonomic drugs, skeletal muscle relaxants, anti-infective agents, hormones and synthetic substitutes, blood derivatives, and cardiovascular drugs.

Intravenous Anesthetics

Sevoflurane administration is compatible with barbiturates, propofol, and other commonly used intravenous anesthetics.

Benzodiazepines and Opioids

Benzodiazepines and opioids would be expected to decrease the MAC of sevoflurane in the same manner as with other inhalational anesthetics. Sevoflurane administration is compatible with benzodiazepines and opioids as commonly used in surgical practice.

Nitrous Oxide

As with other halogenated volatile anesthetics, the anesthetic requirement for sevoflurane is decreased when administered in combination with nitrous oxide. Using 50% N₂O, the MAC equivalent dose requirement is reduced approximately 50% in adults, and approximately 25% in pediatric patients (see **DOSAGE AND ADMINISTRATION**).

Neuromuscular Blocking Agents

As is the case with other volatile anesthetics, sevoflurane increases both the intensity and duration of neuromuscular blockade induced by nondepolarizing muscle relaxants. When used to supplement alfentanil-N₂O anesthesia, sevoflurane and isoflurane equally potentiate neuromuscular block induced with pancuronium, vecuronium or atracurium. Therefore, during sevoflurane anesthesia, the dosage adjustments for these muscle relaxants are similar to those required with isoflurane.

Potential of neuromuscular blocking agents requires equilibration of muscle with delivered partial pressure of sevoflurane. Reduced doses of neuromuscular blocking agents during induction of anesthesia may result in delayed onset of conditions suitable for endotracheal intubation or inadequate muscle relaxation.

Among available nondepolarizing agents, only vecuronium, pancuronium and atracurium interactions have been studied during sevoflurane anesthesia. In the absence of specific guidelines:

1. For endotracheal intubation, do not reduce the dose of nondepolarizing muscle relaxants.
2. During maintenance of anesthesia, the required dose of nondepolarizing muscle relaxants is likely to be reduced compared to that during N₂O/opioid anesthesia. Administration of supplemental doses of muscle relaxants should be guided by the response to nerve stimulation.

The effect of sevoflurane on the duration of depolarizing neuromuscular blockade induced by succinylcholine has not been studied.

Hepatic Function

Results of evaluations of laboratory parameters (e.g., ALT, AST, alkaline phosphatase, and total bilirubin, etc.), as well as investigator-reported incidence of adverse events relating to liver function, demonstrate that sevoflurane can be administered to patients with normal or mild-to-moderately impaired hepatic function. However, patients with severe hepatic dysfunction were not investigated.

Occasional cases of transient changes in postoperative hepatic function tests were reported with both sevoflurane and reference agents. Sevoflurane was found to be comparable to isoflurane with regard to these changes in hepatic function.

Very rare cases of mild, moderate and severe post-operative hepatic dysfunction or hepatitis with or without jaundice have been reported from postmarketing experiences. Clinical judgement should be exercised when sevoflurane is used in patients with underlying hepatic conditions or under treatment with drugs known to cause hepatic dysfunction (see **ADVERSE REACTIONS**).

It has been reported that previous exposure to halogenated hydrocarbon anesthetics may increase the potential for hepatic injury.

Desiccated CO₂ Absorbents

An exothermic reaction occurs when sevoflurane is exposed to CO₂ absorbents. This reaction is increased when the CO₂ absorbent becomes desiccated, such as after an extended period of dry gas flow through the CO₂ absorbent canisters. Rare cases of extreme heat, smoke, and/or spontaneous fire in the anesthesia breathing circuit have been reported during sevoflurane use in conjunction with the use of desiccated CO₂ absorbent, specifically those containing potassium hydroxide (e.g. Baralyme). KOH containing CO₂ absorbents are not recommended for use with sevoflurane. An unusually delayed rise or unexpected decline of inspired sevoflurane concentration compared to the vaporizer setting may be associated with excessive heating of the CO₂ absorbent and chemical breakdown of sevoflurane.

As with other inhalational anesthetics, degradation and production of degradation products can occur when sevoflurane is exposed to desiccated absorbents. When a clinician suspects that the CO₂ absorbent may be desiccated, it should be replaced. The color indicator of most CO₂ absorbents may not change upon desiccation. Therefore, the lack of significant color change

should not be taken as an assurance of adequate hydration. CO₂ absorbents should be replaced routinely regardless of the state of the color indicator.

Carcinogenesis, Mutagenesis, Impairment of Fertility

Studies on carcinogenesis have not been performed for either sevoflurane or Compound A. No mutagenic effect of sevoflurane was noted in the Ames test, mouse micronucleus test, mouse lymphoma mutagenicity assay, human lymphocyte culture assay, mammalian cell transformation assay, ³²P DNA adduct assay, and no chromosomal aberrations were induced in cultured mammalian cells.

Similarly, no mutagenic effect of Compound A was noted in the Ames test, the Chinese hamster chromosomal aberration assay and the *in vivo* mouse micronucleus assay. However, positive responses were observed in the human lymphocyte chromosome aberration assay. These responses were seen only at high concentrations and in the absence of metabolic activation (human S-9).

Pregnancy Category B

Reproduction studies have been performed in rats and rabbits at doses up to 1 MAC (minimum alveolar concentration) without CO₂ absorbent and have revealed no evidence of impaired fertility or harm to the fetus due to sevoflurane at 0.3 MAC, the highest nontoxic dose. Developmental and reproductive toxicity studies of sevoflurane in animals in the presence of strong alkalies (i.e., degradation of sevoflurane and production of Compound A) have not been conducted. There are no adequate and well-controlled studies in pregnant women. Because animal reproduction studies are not always predictive of human response, sevoflurane should be used during pregnancy only if clearly needed.

Labor and Delivery

Sevoflurane has been used as part of general anesthesia for elective cesarean section in 29 women. There were no untoward effects in mother or neonate (see **PHARMACODYNAMICS - Clinical Trials**). The safety of sevoflurane in labor and delivery has not been demonstrated.

Nursing Mothers

The concentrations of sevoflurane in milk are probably of no clinical importance 24 hours after anesthesia. Because of rapid washout, sevoflurane concentrations in milk are predicted to be below those found with many other volatile anesthetics.

Geriatric Use

MAC decreases with increasing age. The average concentration of sevoflurane to achieve MAC in an 80 year old is approximately 50% of that required in a 20 year old.

Pediatric Use

Induction and maintenance of general anesthesia with sevoflurane have been established in controlled clinical trials in pediatric patients aged 1 to 18 years (see **PHARMACODYNAMICS - Clinical Trials** and **ADVERSE REACTIONS**). Sevoflurane has a nonpungent odor and is suitable for mask induction in pediatric patients.

The concentration of sevoflurane required for maintenance of general anesthesia is age dependent. When used in combination with nitrous oxide, the MAC equivalent dose of sevoflurane should be reduced in pediatric patients. MAC in premature infants has not been determined (see **PRECAUTIONS - Drug Interactions** and **DOSAGE AND ADMINISTRATION** for recommendations in pediatric patients 1 day of age and older).

The use of sevoflurane has been associated with seizures (see **PRECAUTIONS** and **ADVERSE REACTIONS**). The majority of these have occurred in children and young adults starting from 2 months of age, most of whom had no predisposing risk factors. Clinical judgement should be exercised when using sevoflurane in patients who may be at risk for seizures.

ADVERSE REACTIONS

Adverse events are derived from controlled clinical trials conducted in the United States, Canada, and Europe. The reference drugs were isoflurane, enflurane, and propofol in adults and halothane in pediatric patients. The studies were conducted using a variety of premedications, other anesthetics, and surgical procedures of varying length. Most adverse events reported were mild and transient, and may reflect the surgical procedures, patient characteristics (including disease) and/or medications administered.

Of the 5182 patients enrolled in the clinical trials, 2906 were exposed to sevoflurane, including 118 adults and 507 pediatric patients who underwent mask induction. Each patient was counted once for each type of adverse event. Adverse events reported in patients in clinical trials and considered to be possibly or probably related to sevoflurane are presented within each body system in order of decreasing frequency in the following listings. One case of malignant hyperthermia was reported in pre-registration clinical trials.

Adverse Events During the Induction Period (from Onset of Anesthesia by Mask Induction to Surgical Incision) Incidence > 1%

Adult Patients (N = 118)

Cardiovascular

Bradycardia 5%, Hypotension 4%, Tachycardia 2%

Nervous System

Agitation 7%

Respiratory System

Laryngospasm 8%, Airway obstruction 8%, Breathholding 5%, Cough Increased 5%

Pediatric Patients (N = 507)

Cardiovascular

Tachycardia 6%, Hypotension 4%

Nervous System

Agitation 15%

Respiratory System

Breathholding 5%, Cough Increased 5%, Laryngospasm 3%, Apnea 2%

Digestive System

Increased salivation 2%

Adverse Events During Maintenance and Emergence Periods, Incidence > 1% (N = 2906)

Body as a whole

Fever 1%, Shivering 6%, Hypothermia 1%, Movement 1%, Headache 1%

Cardiovascular

Hypotension 11%, Hypertension 2%, Bradycardia 5%, Tachycardia 2%

Nervous System

Somnolence 9%, Agitation 9%, Dizziness 4%, Increased salivation 4%

Digestive System

Nausea 25%, Vomiting 18%

Respiratory System

Cough increased 11%, Breathholding 2%, Laryngospasm 2%

Adverse Events, All Patients in Clinical Trials (N = 2906), All Anesthetic Periods, Incidence < 1% (Reported in 3 or More Patients)

Body as a whole

Asthenia, Pain

Cardiovascular

Arrhythmia, Ventricular Extrasystoles, Supraventricular Extrasystoles, Complete AV Block, Bigeminy, Hemorrhage, Inverted T Wave, Atrial Fibrillation, Atrial Arrhythmia, Second Degree AV Block, Syncope, S-T Depressed

Nervous System

Crying, Nervousness, Confusion, Hypertonia, Dry Mouth, Insomnia

Respiratory System

Sputum Increased, Apnea, Hypoxia, Wheezing, Bronchospasm, Hyperventilation, Pharyngitis, Hiccup, Hypoventilation, Dyspnea, Stridor

Metabolism and Nutrition

Increases in LDH, AST, ALT, BUN, Alkaline Phosphatase, Creatinine, Bilirubinemia, Glycosuria, Fluorosis, Albuminuria, Hypophosphatemia, Acidosis, Hyperglycemia

Hemic and Lymphatic System

Leucocytosis, Thrombocytopenia

Skin and Special Senses

Amblyopia, Pruritus, Taste Perversion, Rash, Conjunctivitis

Urogenital

Urination Impaired, Urine Abnormality, Urinary Retention, Oliguria

See **WARNINGS** for information regarding malignant hyperthermia.

Post-Marketing Adverse Events

The following adverse events have been identified during post-approval use of Ultane (sevoflurane USP). Due to the spontaneous nature of these reports, the actual incidence and relationship of Ultane to these events cannot be established with certainty.

CNS

Seizures — Post-marketing reports indicate that sevoflurane use has been associated with seizures. The majority of cases were in children and young adults, most of whom had no medical history of seizures. Several cases reported no concomitant medications, and at least one case was confirmed by EEG. Although many cases were single seizures that resolved spontaneously or after treatment, cases of multiple seizures have also been reported. Seizures have occurred during, or soon after sevoflurane induction, during emergence, and during post-operative recovery up to a day following anesthesia.

Cardiac

Cardiac arrest

Hepatic

- Cases of mild, moderate and severe post-operative hepatic dysfunction or hepatitis with or without jaundice have been reported. Histological evidence was not provided for any of the reported hepatitis cases. In most of these cases, patients had underlying hepatic conditions or were under treatment with drugs known to cause hepatic dysfunction. Most of the reported events were transient and resolved spontaneously (see **PRECAUTIONS**).
- Hepatic necrosis
- Hepatic failure

Other

- Malignant hyperthermia (see **CONTRAINDICATIONS** and **WARNINGS**)
- Allergic reactions, such as rash, urticaria, pruritus, bronchospasm, anaphylactic or anaphylactoid reactions (see **CONTRAINDICATIONS**)
- Reports of hypersensitivity (including contact dermatitis, rash, dyspnea, wheezing, chest discomfort, swelling face, or anaphylactic reaction) have been received, particularly in association with long-term occupational exposure to inhaled anesthetic agents, including sevoflurane (see **OCCUPATIONAL CAUTION**).

Laboratory Findings

- Transient elevations in glucose, liver function tests, and white blood cell count may occur as with use of other anesthetic agents.

OVERDOSAGE

In the event of overdosage, or what may appear to be overdosage, the following action should be taken: discontinue administration of sevoflurane, maintain a patent airway, initiate assisted or controlled ventilation with oxygen, and maintain adequate cardiovascular function.

DOSAGE AND ADMINISTRATION

The concentration of sevoflurane being delivered from a vaporizer during anesthesia should be known. This may be accomplished by using a vaporizer calibrated specifically for sevoflurane. The administration of general anesthesia must be individualized based on the patient's response.

Replacement of Desiccated CO₂ Absorbents

When a clinician suspects that the CO₂ absorbent may be desiccated, it should be replaced. The exothermic reaction that occurs with sevoflurane and CO₂ absorbents is increased when the CO₂ absorbent becomes desiccated, such as after an extended period of dry gas flow through the CO₂ absorbent canisters (see **PRECAUTIONS**).

Pre-anesthetic Medication

No specific premedication is either indicated or contraindicated with sevoflurane. The decision as to whether or not to premedicate and the choice of premedication is left to the discretion of the anesthesiologist.

Induction

Sevoflurane has a nonpungent odor and does not cause respiratory irritability; it is suitable for mask induction in pediatrics and adults.

Maintenance

Surgical levels of anesthesia can usually be achieved with concentrations of 0.5 - 3% sevoflurane with or without the concomitant use of nitrous oxide. Sevoflurane can be administered with any type of anesthesia circuit.

Table 9. MAC Values for Adults and Pediatric Patients According to Age

Age of Patient (years)	Sevoflurane in Oxygen	Sevoflurane in 65% N ₂ O/35% O ₂
0 - 1 months #	3.3%	
1 - < 6 months	3.0%	
6 months - < 3 years	2.8%	2.0% [@]
3 - 12	2.5%	
25	2.6%	1.4%
40	2.1%	1.1%
60	1.7%	0.9%
80	1.4%	0.7%

Neonates are full-term gestational age. MAC in premature infants has not been determined.
@ In 1 - < 3 year old pediatric patients, 60% N₂O/40% O₂ was used.

HOW SUPPLIED

ULTANE (sevoflurane), Volatile Liquid for Inhalation, is packaged in amber colored bottles containing 250 mL sevoflurane, List 4456, NDC # 0074-4456-04 (plastic).

SAFETY AND HANDLING

Occupational Caution

There is no specific work exposure limit established for sevoflurane. However, the National Institute for Occupational Safety and Health has recommended an 8 hour time-weighted average limit of 2 ppm for halogenated anesthetic agents in general (0.5 ppm when coupled with exposure to N₂O) (see **ADVERSE REACTIONS**).

Storage

Store at controlled room temperature, 15° - 30°C (59° - 86°F). See USP.

Product of Japan

Product inquiries should be directed to AbbVie Inc., North Chicago, IL 60064, USA

Manufactured by:

AbbVie Inc., North Chicago, IL 60064, USA under license from Maruishi Pharmaceutical Company LTD. 2-3-5, Fushimi-machi, Chuo-Ku, Osaka , Japan.

©AbbVie Inc. 2014

03-AXXX January 2014