

## HIGHLIGHTS OF PRESCRIBING INFORMATION

These highlights do not include all the information needed to use LAMISIL Tablets safely and effectively.  
See full prescribing information for LAMISIL Tablets.

**LAMISIL<sup>®</sup> (terbinafine hydrochloride) Tablets, 250 mg**  
For oral use  
Initial U.S. Approval: 1992

### -----INDICATIONS AND USAGE-----

Lamisil Tablets are an allylamine antifungal indicated for the treatment of onychomycosis of the toenail or fingernail due to dermatophytes (tinea unguium) (1)

### -----DOSAGE AND ADMINISTRATION-----

- Fingernail onychomycosis: One 250 mg tablet, once daily for 6 weeks (2)
- Toenail onychomycosis: One 250 mg tablet, once daily for 12 weeks (2)

### -----DOSAGE FORMS AND STRENGTHS-----

Tablet, 250 mg (3)

### -----CONTRAINDICATIONS-----

Lamisil Tablets are contraindicated in individuals with a history of allergic reaction to oral terbinafine because of the risk of anaphylaxis. (4)

### -----WARNINGS AND PRECAUTIONS-----

- Liver failure, sometimes leading to liver transplant or death, has occurred with the use of oral terbinafine. Obtain pretreatment serum transaminases. Discontinue Lamisil Tablets if liver injury develops. (5.1, 5.8)
- Taste disturbance, including taste loss, has been reported with the use of Lamisil Tablets. Taste disturbance can be severe, may be prolonged, or may be permanent. Discontinue Lamisil Tablets if taste disturbance occurs. (5.2)
- Smell disturbance, including loss of smell, has been reported with the use of Lamisil Tablets. Smell disturbance may be prolonged, or may be

permanent. Discontinue Lamisil Tablets if smell disturbance occurs. (5.3)

- Depressive symptoms have been reported with terbinafine use. Prescribers should be alert to the development of depressive symptoms. (5.4)
- Severe neutropenia has been reported. If the neutrophil count is  $\leq 1000$  cells/mm<sup>3</sup>, Lamisil Tablets should be discontinued. (5.5)
- Stevens-Johnson syndrome, toxic epidermal necrolysis, erythema multiforme, exfoliative dermatitis, bullous dermatitis, and drug reaction with eosinophilia and systemic symptoms (DRESS) syndrome have been reported with oral terbinafine use. If signs or symptoms of drug reaction occur, treatment with Lamisil Tablets should be discontinued. (5.6)

### -----ADVERSE REACTIONS-----

Common (>2% of patients treated with Lamisil Tablets) reported adverse events include headache, diarrhea, rash, dyspepsia, liver enzyme abnormalities, pruritus, taste disturbance, nausea, abdominal pain, and flatulence. (6.1)

To report SUSPECTED ADVERSE REACTIONS, contact Novartis Pharmaceuticals Corporation at 1-888-669-6682 or FDA at 1-800-FDA-1088 or [www.fda.gov/medwatch](http://www.fda.gov/medwatch).

### -----DRUG INTERACTIONS-----

Terbinafine is an inhibitor of CYP450 2D6 isozyme and has an effect on metabolism of desipramine. Drug interactions have also been noted with cimetidine, fluconazole, cyclosporine, rifampin, and caffeine. (7.1)

See 17 for PATIENT COUNSELING INFORMATION and FDA-approved patient labeling

Revised: 10/2013

## FULL PRESCRIBING INFORMATION: CONTENTS\*

- INDICATIONS AND USAGE
- DOSAGE AND ADMINISTRATION
- DOSAGE FORMS AND STRENGTHS
- CONTRAINDICATIONS
- WARNINGS AND PRECAUTIONS
  - Hepatotoxicity
  - Taste Disturbance Including Loss of Taste
  - Smell Disturbance Including Loss of Smell
  - Depressive Symptoms
  - Hematologic Effects
  - Serious Skin/Hypersensitivity Reactions
  - Lupus Erythematosus
  - Laboratory Monitoring
- ADVERSE REACTIONS
  - Clinical Trials Experience
  - Postmarketing Experience
- DRUG INTERACTIONS
  - Drug-Drug Interactions
  - Food Interactions
- USE IN SPECIFIC POPULATIONS

- Pregnancy
  - Nursing Mothers
  - Pediatric Use
  - Geriatric Use
  - Renal Impairment
  - OVERDOSAGE
  - DESCRIPTION
  - CLINICAL PHARMACOLOGY
    - Mechanism of Action
    - Pharmacodynamics
    - Pharmacokinetics
    - Microbiology
  - NONCLINICAL TOXICOLOGY
    - Carcinogenesis, Mutagenesis, Impairment of Fertility
    - Animal Toxicology and/or Pharmacology
  - CLINICAL STUDIES
  - HOW SUPPLIED/STORAGE AND HANDLING
  - PATIENT COUNSELING INFORMATION
- \* Sections or subsections omitted from the full prescribing information are not listed

## **FULL PRESCRIBING INFORMATION**

### **1 INDICATIONS AND USAGE**

Lamisil (terbinafine hydrochloride) Tablets are indicated for the treatment of onychomycosis of the toenail or fingernail due to dermatophytes (tinea unguium).

Prior to initiating treatment, appropriate nail specimens for laboratory testing [potassium hydroxide (KOH) preparation, fungal culture, or nail biopsy] should be obtained to confirm the diagnosis of onychomycosis.

### **2 DOSAGE AND ADMINISTRATION**

Fingernail onychomycosis: One 250 mg tablet once daily for 6 weeks.

Toenail onychomycosis: One 250 mg tablet once daily for 12 weeks.

The optimal clinical effect is seen some months after mycological cure and cessation of treatment. This is related to the period required for outgrowth of healthy nail.

### **3 DOSAGE FORMS AND STRENGTHS**

Tablet, 250 mg white to yellow-tinged white circular, bi-convex, beveled tablets imprinted with “LAMISIL” in circular form on one side and code “250” on the other side.

### **4 CONTRAINDICATIONS**

Lamisil Tablets are contraindicated in individuals with a history of allergic reaction to oral terbinafine because of the risk of anaphylaxis.

### **5 WARNINGS AND PRECAUTIONS**

#### **5.1 Hepatotoxicity**

Cases of liver failure, some leading to liver transplant or death, have occurred with the use of Lamisil Tablets in individuals with and without preexisting liver disease.

In the majority of liver cases reported in association with use of Lamisil Tablets, the patients had serious underlying systemic conditions. The severity of hepatic events and/or their outcome may be worse in patients with active or chronic liver disease. Treatment with Lamisil Tablets should be discontinued if biochemical or clinical evidence of liver injury develops.

Lamisil Tablets are not recommended for patients with chronic or active liver disease. Before prescribing Lamisil Tablets, liver function tests should be performed since hepatotoxicity may occur in patients with and without pre-existing liver disease. Periodic monitoring of liver function tests is recommended. Lamisil should be immediately discontinued in case of elevation of liver function tests. Patients prescribed Lamisil Tablets should be warned to report immediately to their physician any symptoms of persistent nausea, anorexia, fatigue, vomiting, right upper abdominal pain or jaundice, dark urine, or pale stools. Patients with these symptoms should discontinue taking oral terbinafine, and the patient's liver function should be immediately evaluated.

#### **5.2 Taste Disturbance Including Loss of Taste**

Taste disturbance, including taste loss, has been reported with the use of Lamisil Tablets. It can be severe enough to result in decreased food intake, weight loss, anxiety, and depressive symptoms. Taste disturbance may resolve within several weeks after discontinuation of treatment, but may be prolonged (greater than 1 year), or may be permanent. If symptoms of a taste disturbance occur, Lamisil Tablets should be discontinued.

#### **5.3 Smell Disturbance Including Loss of Smell**

Smell disturbance, including loss of smell, has been reported with the use of Lamisil Tablets. Smell disturbance may resolve after discontinuation of treatment, but may be prolonged (greater than 1 year), or may be permanent. If symptoms of a smell disturbance occur, Lamisil Tablets should be discontinued.

## 5.4 Depressive Symptoms

Depressive symptoms have occurred during postmarketing use of Lamisil Tablets. Prescribers should be alert to the development of depressive symptoms, and patients should be instructed to report depressive symptoms to their physician.

## 5.5 Hematologic Effects

Transient decreases in absolute lymphocyte counts (ALCs) have been observed in controlled clinical trials. In placebo-controlled trials, 8/465 Lamisil-treated subjects (1.7%) and 3/137 placebo-treated subjects (2.2%) had decreases in ALC to below 1000/mm<sup>3</sup> on 2 or more occasions. In patients with known or suspected immunodeficiency, physicians should consider monitoring complete blood counts if treatment continues for more than 6 weeks. Cases of severe neutropenia have been reported. These were reversible upon discontinuation of Lamisil Tablets, with or without supportive therapy. If clinical signs and symptoms suggestive of secondary infection occur, a complete blood count should be obtained. If the neutrophil count is  $\leq$ 1000 cells/mm<sup>3</sup>, Lamisil Tablets should be discontinued and supportive management started.

## 5.6 Serious Skin/Hypersensitivity Reactions

There have been postmarketing reports of serious skin/hypersensitivity reactions [e.g., Stevens-Johnson Syndrome, toxic epidermal necrolysis, erythema multiforme, exfoliative dermatitis, and bullous dermatitis, and drug reaction with eosinophilia and systemic symptoms (DRESS) syndrome]. Manifestations of DRESS syndrome may include cutaneous reaction (such as rash or exfoliative dermatitis), eosinophilia, and one or more organ complications such as hepatitis, pneumonitis, nephritis, myocarditis, and pericarditis. If progressive skin rash or signs/symptoms of the above drug reactions occur, treatment with Lamisil Tablets should be discontinued.

## 5.7 Lupus Erythematosus

During postmarketing experience, precipitation and exacerbation of cutaneous and systemic lupus erythematosus have been reported in patients taking Lamisil Tablets. Lamisil Tablets should be discontinued in patients with clinical signs and symptoms suggestive of lupus erythematosus.

## 5.8 Laboratory Monitoring

Measurement of serum transaminases (ALT and AST) is advised for all patients before taking Lamisil Tablets.

# 6 ADVERSE REACTIONS

## 6.1 Clinical Trials Experience

Because clinical trials are conducted under widely varying conditions, adverse reaction rates in the clinical trials of a drug cannot be directly compared to rates in the clinical trials of another drug and may not reflect the rates observed in practice.

The most frequently reported adverse events observed in the 3 US/Canadian placebo-controlled trials are listed in the table below. The adverse events reported encompass gastrointestinal symptoms (including diarrhea, dyspepsia, and abdominal pain), liver test abnormalities, rashes, urticaria, pruritus, and taste disturbances. Changes in the ocular lens and retina have been reported following the use of Lamisil Tablets in controlled trials. The clinical significance of these changes is unknown. In general, the adverse events were mild, transient, and did not lead to discontinuation from study participation.

	Adverse Event		Discontinuation	
	Lamisil Tablets (%) n=465	Placebo (%) n=137	Lamisil Tablets (%) n=465	Placebo (%) n=137
Headache	12.9	9.5	0.2	0.0
Gastrointestinal Symptoms:				
Diarrhea	5.6	2.9	0.6	0.0
Dyspepsia	4.3	2.9	0.4	0.0
Abdominal Pain	2.4	1.5	0.4	0.0
Nausea	2.6	2.9	0.2	0.0
Flatulence	2.2	2.2	0.0	0.0

Dermatological Symptoms:				
Rash	5.6	2.2	0.9	0.7
Pruritus	2.8	1.5	0.2	0.0
Urticaria	1.1	0.0	0.0	0.0
Liver Enzyme Abnormalities*	3.3	1.4	0.2	0.0
Taste Disturbance	2.8	0.7	0.2	0.0
Visual Disturbance	1.1	1.5	0.9	0.0

\* Liver enzyme abnormalities  $\geq 2x$  the upper limit of normal range.

## 6.2 Postmarketing Experience

The following adverse events have been identified during postapproval use of Lamisil Tablets. Because these events are reported voluntarily from a population of uncertain size, it is not always possible to reliably estimate their frequency or establish a causal relationship to drug exposure.

*Blood and lymphatic system disorders:* Pancytopenia, agranulocytosis, severe neutropenia, thrombocytopenia, anemia [see *Warnings and Precautions (5.5)*]

*Immune system disorders:* Serious hypersensitivity reactions e.g., angioedema and allergic reactions (including anaphylaxis), precipitation and exacerbation of cutaneous and systemic lupus erythematosus [see *Warnings and Precautions (5.7)*], serum sickness-like reaction

*Psychiatric disorders:* Anxiety and depressive symptoms independent of taste disturbance have been reported with use of Lamisil Tablets. In some cases, depressive symptoms have been reported to subside with discontinuance of therapy and to recur with reinstatement of therapy [see *Warnings and Precautions (5.4)*]

*Nervous system disorders:* Cases of taste disturbance, including taste loss, have been reported with the use of Lamisil Tablets. It can be severe enough to result in decreased food intake, weight loss, anxiety, and depressive symptoms. Cases of smell disturbance, including smell loss, have been reported with the use of Lamisil Tablets [see *Warnings and Precautions (5.2 and 5.3)*]. Cases of paresthesia and hypoesthesia have been reported with the use of Lamisil Tablets.

*Eye disorders:* Visual field defects, reduced visual acuity

*Ear and labyrinth disorders:* Hearing impairment, vertigo, tinnitus

*Vascular disorders:* Vasculitis

*Gastrointestinal disorders:* Pancreatitis, vomiting

*Hepatobiliary disorders:* Cases of liver failure some leading to liver transplant or death [see *Warnings and Precautions (5.1)*], idiosyncratic and symptomatic hepatic injury. Cases of hepatitis, cholestasis, and increased hepatic enzymes [see *Warnings and Precautions (5.1)*] have been seen with the use of Lamisil Tablets.

*Skin and subcutaneous tissue disorders:* Serious skin reactions [e.g., Stevens-Johnson syndrome, toxic epidermal necrolysis, erythema multiforme, exfoliative dermatitis, and bullous dermatitis, and drug reaction with eosinophilia and systemic symptoms (DRESS) syndrome] [see *Warnings and Precautions (5.6)*], acute generalized exanthematous pustulosis, psoriasiform eruptions or exacerbation of psoriasis, photosensitivity reactions, hair loss

*Musculoskeletal and connective tissue disorders:* Rhabdomyolysis, arthralgia, myalgia

*General disorders and administration site conditions:* Malaise, fatigue, influenza-like illness, pyrexia

*Investigations:* Altered prothrombin time (prolongation and reduction) in patients concomitantly treated with warfarin and increased blood creatine phosphokinase have been reported.

## 7 DRUG INTERACTIONS

### 7.1 Drug-Drug Interactions

*In vivo* studies have shown that terbinafine is an inhibitor of the CYP450 2D6 isozyme. Drugs predominantly metabolized by the CYP450 2D6 isozyme include the following drug classes: tricyclic antidepressants, selective serotonin reuptake inhibitors, beta-blockers, antiarrhythmics class 1C (e.g., flecainide and propafenone) and monoamine oxidase inhibitors Type B. Coadministration of Lamisil Tablets should be done with careful monitoring and may require a reduction in dose of the 2D6-metabolized drug. In a study to assess the effects of terbinafine on desipramine in healthy volunteers characterized as normal metabolizers, the administration of terbinafine resulted in a 2-fold increase in  $C_{max}$  and a 5-fold increase in area under the curve (AUC). In this study, these effects were shown to persist at the last observation at 4 weeks after discontinuation of Lamisil Tablets. In studies in healthy subjects characterized as extensive metabolizers of dextromethorphan (antitussive drug and CYP2D6 probe substrate), terbinafine increases the dextromethorphan/dextrorphan metabolite ratio in urine by 16- to 97-fold on average. Thus, terbinafine may convert extensive CYP2D6 metabolizers to poor metabolizer status.

*In vitro* studies with human liver microsomes showed that terbinafine does not inhibit the metabolism of tolbutamide, ethinylestradiol, ethoxycoumarin, cyclosporine, cisapride and fluvastatin. *In vivo* drug-drug interaction studies conducted in healthy volunteer subjects showed that terbinafine does not affect the clearance of antipyrine or digoxin. Terbinafine decreases the clearance of caffeine by 19%. Terbinafine increases the clearance of cyclosporine by 15%.

The influence of terbinafine on the pharmacokinetics of fluconazole, cotrimoxazole (trimethoprim and sulfamethoxazole), zidovudine or theophylline was not considered to be clinically significant.

Coadministration of a single dose of fluconazole (100 mg) with a single dose of terbinafine resulted in a 52% and 69% increase in terbinafine  $C_{max}$  and AUC, respectively. Fluconazole is an inhibitor of CYP2C9 and CYP3A enzymes. Based on this finding, it is likely that other inhibitors of both CYP2C9 and CYP3A4 (e.g., ketoconazole, amiodarone) may also lead to a substantial increase in the systemic exposure ( $C_{max}$  and AUC) of terbinafine when concomitantly administered.

There have been spontaneous reports of increase or decrease in prothrombin times in patients concomitantly taking oral terbinafine and warfarin, however, a causal relationship between Lamisil Tablets and these changes has not been established.

Terbinafine clearance is increased 100% by rifampin, a CYP450 enzyme inducer, and decreased 33% by cimetidine, a CYP450 enzyme inhibitor. Terbinafine clearance is unaffected by cyclosporine. There is no information available from adequate drug-drug interaction studies with the following classes of drugs: oral contraceptives, hormone replacement therapies, hypoglycemics, phenytoins, thiazide diuretics, and calcium channel blockers.

### 7.2 Food Interactions

An evaluation of the effect of food on Lamisil Tablets was conducted. An increase of less than 20% of the AUC of terbinafine was observed when Lamisil Tablets were administered with food. Lamisil Tablets can be taken with or without food.

## 8 USE IN SPECIFIC POPULATIONS

### 8.1 Pregnancy

#### Pregnancy Category B

There are no adequate and well-controlled studies in pregnant women. Because animal reproduction studies are not always predictive of human response, and because treatment of onychomycosis can be postponed until after pregnancy is completed, it is recommended that Lamisil Tablets not be initiated during pregnancy.

Oral reproduction studies have been performed in rabbits and rats at doses up to 300 mg/kg/day [12x to 23x the maximum recommended human dose (MRHD), in rabbits and rats, respectively, based on body surface area (BSA) comparisons] and have revealed no evidence of impaired fertility or harm to the fetus due to terbinafine.

### 8.3 Nursing Mothers

After oral administration, terbinafine is present in breast milk of nursing mothers. The ratio of terbinafine in milk to plasma is 7:1. Treatment with Lamisil Tablets is not recommended in women who are nursing.

### 8.4 Pediatric Use

The safety and efficacy of Lamisil Tablets have not been established in pediatric patients with onychomycosis.

## 8.5 Geriatric Use

Clinical studies of Lamisil Tablets did not include sufficient numbers of subjects aged 65 years and over to determine whether they respond differently from younger subjects. Other reported clinical experience has not identified differences in responses between the elderly and younger patients. In general, dose selection for an elderly patient should be cautious, usually starting at the low end of the dosing range, reflecting the greater frequency of decreased hepatic, renal, or cardiac function, and of concomitant disease or other drug therapy.

## 8.6 Renal Impairment

In patients with renal impairment (creatinine clearance less than or equal to 50 mL/min) the use of Lamisil Tablets has not been adequately studied.

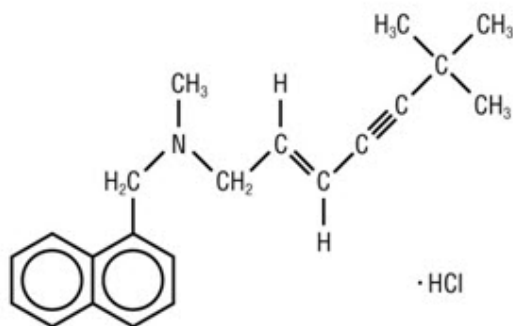
## 10 OVERDOSAGE

Clinical experience regarding overdose with oral terbinafine is limited. Doses up to 5 grams (20 times the therapeutic daily dose) have been taken without inducing serious adverse reactions. The symptoms of overdose included nausea, vomiting, abdominal pain, dizziness, rash, frequent urination, and headache.

## 11 DESCRIPTION

Lamisil Tablets contain the synthetic allylamine antifungal compound terbinafine hydrochloride.

Chemically, terbinafine hydrochloride is (E)-N-(6,6-dimethyl-2-hepten-4-ynyl)-N-methyl-1-naphthalenemethanamine hydrochloride. The empirical formula  $C_{21}H_{26}ClN$  with a molecular weight of 327.90, and the following structural formula:



Terbinafine hydrochloride is a white to off-white fine crystalline powder. It is freely soluble in methanol and methylene chloride, soluble in ethanol, and slightly soluble in water.

### *Each tablet contains:*

*Active Ingredients:* terbinafine hydrochloride (equivalent to 250 mg base)

*Inactive Ingredients:* colloidal silicon dioxide NF, hydroxypropyl methylcellulose USP, magnesium stearate NF, microcrystalline cellulose NF, and sodium starch glycolate NF.

## 12 CLINICAL PHARMACOLOGY

### 12.1 Mechanism of Action

Terbinafine is an allylamine antifungal [see *Clinical Pharmacology (12.4)*].

### 12.2 Pharmacodynamics

The pharmacodynamics of Lamisil Tablets is unknown.

### 12.3 Pharmacokinetics

Following oral administration, terbinafine is well absorbed (>70%) and the bioavailability of Lamisil Tablets as a result of first-pass metabolism is approximately 40%. Peak plasma concentrations of 1  $\mu\text{g/mL}$  appear within 2 hours after a single 250 mg dose; the AUC is approximately 4.56  $\mu\text{g}\cdot\text{h/mL}$ . An increase in the AUC of terbinafine of less than 20% is observed when Lamisil Tablets are administered with food.

In plasma, terbinafine is >99% bound to plasma proteins and there are no specific binding sites. At steady-state, in comparison to a single dose, the peak concentration of terbinafine is 25% higher and plasma AUC increases by a factor of 2.5; the increase in plasma AUC is consistent with an effective half-life of ~36 hours. Terbinafine is distributed to the sebum and skin. A terminal half-life of 200–400 hours may represent the slow elimination of terbinafine from tissues such as skin and adipose. Prior to excretion, terbinafine is extensively metabolized by at least 7 CYP isoenzymes with major contributions from CYP2C9, CYP1A2, CYP3A4, CYP2C8, and CYP2C19. No metabolites have been identified that have antifungal activity similar to terbinafine. Approximately 70% of the administered dose is eliminated in the urine. In patients with renal impairment (creatinine clearance  $\leq$ 50 mL/min) or hepatic cirrhosis, the clearance of terbinafine is decreased by approximately 50% compared to normal volunteers. No effect of gender on the blood levels of terbinafine was detected in clinical trials. No clinically relevant age-dependent changes in steady-state plasma concentrations of terbinafine have been reported.

## 12.4 Microbiology

Terbinafine, an allylamine antifungal, inhibits biosynthesis of ergosterol, an essential component of fungal cell membrane, via inhibition of squalene epoxidase enzyme. This results in fungal cell death primarily due to the increased membrane permeability mediated by the accumulation of high concentrations of squalene but not due to ergosterol deficiency. Depending on the concentration of the drug and the fungal species test *in vitro*, terbinafine hydrochloride may be fungicidal. However, the clinical significance of *in vitro* data is unknown.

Terbinafine has been shown to be active against most strains of the following microorganisms both *in vitro* and in clinical infections:

*Trichophyton mentagrophytes*

*Trichophyton rubrum*

The following *in vitro* data are available, but their clinical significance is unknown. *In vitro*, terbinafine exhibits satisfactory MIC's against most strains of the following microorganisms; however, the safety and efficacy of terbinafine in treating clinical infections due to these microorganisms have not been established in adequate and well-controlled clinical trials:

*Candida albicans*

*Epidermophyton floccosum*

*Scopulariopsis brevicaulis*

## 13 NONCLINICAL TOXICOLOGY

### 13.1 Carcinogenesis, Mutagenesis, Impairment of Fertility

In a 28-month oral carcinogenicity study in rats, an increase in the incidence of liver tumors was observed in males at the highest dose tested, 69 mg/kg/day (2x the MRHD based on AUC comparisons of the parent terbinafine); however, even though dose-limiting toxicity was not achieved at the highest tested dose, higher doses were not tested.

The results of a variety of *in vitro* (mutations in *E. coli* and *S. typhimurium*, DNA repair in rat hepatocytes, mutagenicity in Chinese hamster fibroblasts, chromosome aberration, and sister chromatid exchanges in Chinese hamster lung cells), and *in vivo* (chromosome aberration in Chinese hamsters, micronucleus test in mice) genotoxicity tests gave no evidence of a mutagenic or clastogenic potential.

Oral reproduction studies in rats at doses up to 300 mg/kg/day (approximately 12x the MRHD based on BSA comparisons) did not reveal any specific effects on fertility or other reproductive parameters. Intravaginal application of terbinafine hydrochloride at 150 mg/day in pregnant rabbits did not increase the incidence of abortions or premature deliveries nor affect fetal parameters.

### 13.2 Animal Toxicology and/or Pharmacology

A wide range of *in vivo* studies in mice, rats, dogs, and monkeys, and *in vitro* studies using rat, monkey, and human hepatocytes suggest that peroxisome proliferation in the liver is a rat-specific finding. However, other effects, including increased liver weights and APTT, occurred in dogs and monkeys at doses giving C<sub>ss</sub> trough levels of the parent terbinafine 2–3x those seen in humans at the MRHD. Higher doses were not tested.

## 14 CLINICAL STUDIES

The efficacy of Lamisil Tablets in the treatment of onychomycosis is illustrated by the response of subjects with toenail and/or fingernail infections who participated in 3 US/Canadian placebo-controlled clinical trials.

Results of the first toenail trial, as assessed at week 48 (12 weeks of treatment with 36 weeks follow-up after completion of therapy), demonstrated mycological cure, defined as simultaneous occurrence of negative KOH plus negative culture, in 70% of subjects. Fifty-nine percent (59%) of subjects experienced effective treatment (mycological cure plus 0% nail involvement or >5mm of new unaffected nail growth); 38% of subjects demonstrated mycological cure plus clinical cure (0% nail involvement).

In a second toenail trial of dermatophytic onychomycosis, in which nondermatophytes were also cultured, similar efficacy against the dermatophytes was demonstrated. The pathogenic role of the nondermatophytes cultured in the presence of dermatophytic onychomycosis has not been established. The clinical significance of this association is unknown.

Results of the fingernail trial, as assessed at week 24 (6 weeks of treatment with 18 weeks follow-up after completion of therapy), demonstrated mycological cure in 79% of subjects, effective treatment in 75% of the subjects, and mycological cure plus clinical cure in 59% of the subjects.

The mean time to overall success was approximately 10 months for the first toenail trial and 4 months for the fingernail trial. In the first toenail trial, for subjects evaluated at least 6 months after achieving clinical cure and at least 1 year after completing therapy with Lamisil Tablets, the clinical relapse rate was approximately 15%.

## 16 HOW SUPPLIED/STORAGE AND HANDLING

Lamisil Tablets are supplied as white to yellow-tinged white circular, bi-convex, beveled tablets containing 250 mg of terbinafine imprinted with "LAMISIL" in circular form on one side and code "250" on the other.

Bottles of 100 tablets NDC 0078-0179-05

Bottles of 30 tablets NDC 0078-0179-15

Store Lamisil Tablets below 25°C (77°F); in a tight container. Protect from light.

## 17 PATIENT COUNSELING INFORMATION

See FDA-Approved Patient Labeling (Patient Information)

Patients taking Lamisil Tablets should receive the following information and instructions:

- Advise patients to immediately report to their physician or get emergency help if they experience any of the following symptoms: hives, mouth sores, blistering and peeling of skin, swelling of face, lips, tongue, or throat, difficulty swallowing or breathing. Lamisil Tablets treatment should be discontinued.
- Advise patients to immediately report to their physician any symptoms of persistent nausea, anorexia, fatigue, vomiting, right upper abdominal pain, jaundice, dark urine, or pale stools. Lamisil Tablets treatment should be discontinued.
- Advise patients to report to their physician any signs of taste disturbance, smell disturbance and/or depressive symptoms, fever, skin eruption, lymph node enlargement, erythema, scaling, loss of pigment, and unusual photosensitivity that can result in a rash. Lamisil Tablets treatment should be discontinued.
- Advise patients to minimize exposure to natural and artificial sunlight (tanning beds or UVA/B treatment) while using Lamisil Tablets.
- Advise patients that if they forget to take Lamisil Tablets, to take their tablets as soon as they remember, unless it is less than 4 hours before the next dose is due. Advise patients to call their physician if they take too many Lamisil Tablets.

T2013-64  
October 2013

## Patient Information

Lamisil (Lam-i-sil)  
(terbinafine hydrochloride)  
Tablets

### What are Lamisil Tablets?

Lamisil Tablets is a prescription antifungal medicine used to treat fungal infections of the fingernails and toenails (onychomycosis).

Your doctor should do tests to check you for fungal infection of your nails before you start Lamisil Tablets.

It is not known if Lamisil Tablets are safe and effective in children for the treatment of onychomycosis.

### Who should not take Lamisil Tablets?

Do not take Lamisil Tablets if you are allergic to terbinafine hydrochloride when taken by mouth.

### What should I tell my doctor before taking Lamisil Tablets?

**Before you take Lamisil Tablets, tell your doctor if you:**

- have or had liver problems
- have a weakened immune system (immunocompromised)
- have lupus (an autoimmune disease)
- have any other medical conditions
- are pregnant or plan to become pregnant. It is not known if Lamisil Tablets will harm your unborn baby. You should not start taking Lamisil Tablets during pregnancy without talking with your doctor.
- are breastfeeding or plan to breastfeed. Lamisil can pass into your breast milk and may harm your baby. Talk to your doctor about the best way to feed your baby if you take Lamisil Tablets.

**Tell your doctor about all the medicines you take**, including prescription and over-the-counter medicines, vitamins, and herbal supplements.

Lamisil Tablets may affect the way other medicines work and other medicines may affect how Lamisil Tablets work. Especially tell your doctor if you take:

- a medicine for depression
- a medicine for high blood pressure
- a medicine for heart problems
- desipramine (Norpramin)
- caffeine
- cyclosporine (Gengraf, Neoral, Sandimmune)
- fluconazole (Diflucan)
- rifampin (Rifater, Rifamate, Rimactane, Rifadine)

- cimetidine (Tagamet)

If you are not sure if your medicine is one listed above, ask your doctor or pharmacist.

Know the medicines you take. Keep a list of them to show your doctor and pharmacist when you get a new medicine.

### How should I take Lamisil Tablets?

- Take Lamisil Tablets exactly as your doctor tells you to take it.
- Lamisil comes as a tablet that you take by mouth.
- **Lamisil Tablets are usually taken:**
  - **1 time each day for 6 weeks to treat fungal infections of your fingernail, or**
  - **1 time each day for 12 weeks to treat fungal infections of your toenail**
- Lamisil Tablets can be taken with or without food.
- If you miss a dose of Lamisil Tablets, take it as soon as you remember. If it is less than 4 hours before your next dose, skip the missed dose. Just take the next dose at your regular time.

If you take too many Lamisil Tablets call your doctor. You may have the following symptoms:

- nausea
- stomach (abdomen) pain
- rash
- headache
- vomiting
- dizziness
- frequent urination

### What should I avoid while taking Lamisil Tablets?

- Avoid sunlight. Lamisil Tablets can make your skin sensitive to the sun and the light from sunlamps and tanning beds. You can get a severe sunburn. Use sunscreen and wear a hat and clothes that cover your skin if you have to be in sunlight. Talk to your doctor if you get sunburn.

### What are the possible side effects of Lamisil Tablets?

#### Lamisil Tablets may cause serious side effects, including:

- **liver problems that can lead to the need for liver transplant, or death.** Tell your doctor right away if you get any of these symptoms of a liver problem:
  - nausea
  - poor appetite
  - tiredness
  - vomiting
  - upper right stomach-area (abdomen) pain
  - yellowing of your skin or eyes (jaundice)
  - dark (tea-colored) urine
  - pale or light colored stools

Your doctor should do a blood test to check you for liver problems before you take Lamisil Tablets.

- **change in taste or loss of taste** may happen with Lamisil Tablets and can be severe. This may improve within several weeks after you stop taking Lamisil Tablets, but may last for a long time or may become permanent. Tell your doctor if you have:
  - change in taste or loss of taste
  - poor appetite
  - unwanted weight loss
  - anxiousness
  - change in mood or depressive symptoms

- **change in smell or loss of smell** may happen with Lamisil Tablets. This may improve after you stop taking Lamisil Tablets, but may last for a long time or may become permanent.
- **depressive symptoms. Tell your doctor right away if you have any of these signs or symptoms:**
  - feel sad or worthless
  - change in sleep pattern
  - loss of energy or interest in daily activities
  - restlessness
  - mood changes
- **low white blood cell count.** People taking Lamisil Tablets may have a decrease in white blood cells, especially neutrophils. You may have a higher risk of getting an infection when your white blood cell count is low.
- **serious skin or allergic reactions.** Tell your doctor right away or get emergency help if you get any of these symptoms:
  - skin rash, hives, sores in your mouth, or your skin blisters and peels
  - swelling of your face, eyes, lips, tongue or throat, trouble swallowing or breathing
  - drug reaction with eosinophilia and systemic symptoms (DRESS) syndrome – skin rash, fever, swollen lymph glands, involvement of internal organs
- **new or worsening lupus (an autoimmune disease).** Stop taking Lamisil Tablets and tell your doctor if you get any of the following:
  - progressive skin rash that is scaly, red, shows scarring, or loss of pigment
  - unusual sensitivity to the sun that can lead to a rash

The most common side effects of Lamisil Tablets include:

- headache
- diarrhea
- rash
- upset stomach
- abnormal liver function tests
- itching
- change in taste
- nausea
- stomach-area (abdomen) pain
- gas

Tell your doctor if you have any side effect that bothers you or that does not go away.

These are not all of the possible side effects of Lamisil Tablets. For information, ask your doctor or pharmacist.

Call your doctor for medical advice about side effects. You may report side effects to FDA at 1-800-FDA-1088.

### How should I store Lamisil Tablets?

- Store Lamisil Tablets below 77°F (25°C)
- Keep Lamisil Tablets in a tightly closed container and keep out of the light.

**Keep Lamisil Tablets and all medicines out of the reach of children.**

### General information about the safe and effective use of Lamisil Tablets.

Medicines are sometimes prescribed for purposes other than those listed in Patient Information. Do not use Lamisil Tablets for a condition for which it was not prescribed. Do not give Lamisil Tablets to other people, even if they have the same symptoms that you have. It may harm them.

You can ask your pharmacist or doctor for information about Lamisil Tablets that is written for health professionals.

**What are the ingredients in Lamisil Tablets?**

Active ingredient: terbinafine hydrochloride

Inactive ingredients: colloidal silicon dioxide, hydroxypropyl methylcellulose, magnesium stearate, microcrystalline cellulose, sodium starch glycolate

This Patient Information has been approved by the U.S. Food and Drug Administration.

Distributed by:  
Novartis Pharmaceuticals Corporation  
East Hanover, New Jersey 07936

© Novartis

T2013-64/T2013-65  
October/2013