

HIGHLIGHTS OF PRESCRIBING INFORMATION

These highlights do not include all the information needed to use SUBUTEX[®] sublingual tablet safely and effectively. See full prescribing information for SUBUTEX sublingual tablet.

SUBUTEX (buprenorphine) sublingual tablet for sublingual administration CIII

Initial U.S. Approval: 2002

-----**RECENT MAJOR CHANGES**-----

Warnings and Precautions (5.5, 5.6) 12/2016

-----**INDICATIONS AND USAGE**-----

SUBUTEX sublingual tablet, contains buprenorphine, a partial opioid agonist, and is indicated for the treatment of opioid dependence and is preferred for induction. Prescription use of this product is limited under the Drug Addiction Treatment Act. (1)

-----**DOSAGE AND ADMINISTRATION**-----

Administer SUBUTEX sublingual tablet sublingually as a single daily dose. (2)

To avoid precipitating withdrawal, induction with SUBUTEX sublingual tablet should be undertaken when objective and clear signs of withdrawal are evident. (2.2). SUBOXONE[®] (buprenorphine and naloxone) sublingual film CIII or SUBOXONE[®] (buprenorphine and naloxone) sublingual tablet CIII is generally initiated after two days of SUBUTEX sublingual tablet titration.

-----**DOSAGE FORMS AND STRENGTHS**-----

Sublingual tablet: 2 mg buprenorphine and 8 mg buprenorphine. (3)

-----**CONTRAINDICATIONS**-----

Hypersensitivity to buprenorphine. (4)

-----**WARNINGS AND PRECAUTIONS**-----

- Buprenorphine can be abused in a similar manner to other opioids. Clinical monitoring appropriate to the patient's level of stability is essential. Multiple refills should not be prescribed early in treatment or without appropriate patient follow-up visits. (5.1)
- Significant respiratory depression and death have occurred in association with buprenorphine, particularly when taken by the intravenous (IV) route in combination with benzodiazepines or other CNS depressants (including alcohol). (5.2)
- Consider dose reduction of CNS depressants, SUBUTEX sublingual tablet, or both in situations of concomitant prescription. (5.3)
- Store SUBUTEX sublingual tablet safely out of the sight and reach of children. Buprenorphine can cause severe, possibly fatal, respiratory depression in children. (5.4)
- Neonatal opioid withdrawal syndrome (NOWS) is an expected and treatable outcome of prolonged use of opioids during pregnancy. (5.5)
- Adrenal Insufficiency: If diagnosed, treat with physiologic replacement of corticosteroids, and wean patient off of the opioid. (5.6)
- Chronic administration produces opioid-type physical dependence. Abrupt discontinuation or rapid dose taper may result in opioid withdrawal syndrome. (5.7)
- Monitor liver function tests prior to initiation and during treatment and evaluate suspected hepatic events. (5.8)

- Do not administer SUBUTEX sublingual tablet to patients with known hypersensitivity to buprenorphine. (5.9)
- SUBUTEX sublingual tablet may precipitate opioid withdrawal signs and symptoms in individuals physically dependent on full opioid agonists if administered sublingually or parenterally before the agonist effects of other opioids have subsided. (5.10)
- SUBUTEX sublingual tablet is NOT appropriate as an analgesic. There have been reported deaths of opioid naïve individuals who received a 2 mg sublingual dose of buprenorphine. (5.11)
- SUBUTEX sublingual tablets should be used with caution in patients with moderate to severe hepatic impairment and a dose adjustment is recommended for patients with severe hepatic impairment (5.12)
- Caution patients about the risk of driving or operating hazardous machinery. (5.13)

-----**ADVERSE REACTIONS**-----

Adverse events most commonly observed during clinical trials and post-marketing experience for SUBUTEX sublingual tablet are headache, nausea, vomiting, hyperhidrosis, constipation, signs and symptoms of withdrawal, insomnia, and pain. (6)

To report SUSPECTED ADVERSE REACTIONS, contact Indivior Inc. at 1-877-782-6966 or FDA at 1-800-FDA-1088, or www.fda.gov/medwatch.

-----**DRUG INTERACTIONS**-----

- Use caution in prescribing SUBUTEX sublingual tablet for patients receiving benzodiazepines or other CNS depressants and warn patients against concomitant self-administration/misuse. (7)
- Monitor patients starting or ending CYP3A4 inhibitors or inducers for potential over or under dosing. (7)
- Patients who are on chronic buprenorphine treatment should have their dose monitored if NNRTIs are added to their treatment regimen. Monitor patients taking buprenorphine and atazanavir with and without ritonavir, and reduce dose of buprenorphine if warranted (7).
- Serotonergic Drugs: Concomitant use may result in serotonin syndrome. Discontinue SUBUTEX sublingual tablets if serotonin syndrome is suspected. (7)

-----**USE IN SPECIFIC POPULATIONS**-----

- Nursing mothers: Caution should be exercised when administered to a nursing woman. (8.2)
- Safety and effectiveness of SUBUTEX sublingual tablet in patients below the age of 16 have not been established. (8.4)
- Administer SUBUTEX sublingual tablet with caution to elderly or debilitated patients. (8.5)
- SUBUTEX sublingual tablets should be used with caution in patients with moderate to severe hepatic impairment and a dose adjustment is recommended for patients with severe hepatic impairment (8.6)

See 17 for PATIENT COUNSELING INFORMATION and Medication Guide.

Revised: 12/2016

FULL PRESCRIBING INFORMATION: CONTENTS*

1	INDICATIONS AND USAGE	6	ADVERSE REACTIONS
2	DOSAGE AND ADMINISTRATION		6.1 Clinical Trials Experience
2.1	Important Dosage and Administration Instructions		6.2 Postmarketing Experience
2.2	Induction	7	DRUG INTERACTIONS
2.3	Maintenance	8	USE IN SPECIFIC POPULATIONS
2.4	Method of Administration	8.1	Pregnancy
2.5	Clinical Supervision	8.2	Lactation
2.6	Patients with Hepatic Impairment	8.3	Females and Males of Reproductive Potential
2.7	Unstable Patients	8.4	Pediatric Use
2.8	Stopping Treatment	8.5	Geriatric Use
3	DOSAGE FORMS AND STRENGTHS	8.6	Hepatic Impairment
4	CONTRAINDICATIONS	8.7	Renal Impairment
5	WARNINGS AND PRECAUTIONS	9	DRUG ABUSE AND DEPENDENCE
5.1	Abuse Potential	9.1	Controlled Substance
5.2	Respiratory Depression	9.2	Abuse
5.3	CNS Depression	9.3	Dependence
5.4	Unintentional Pediatric Exposure	10	OVERDOSAGE
5.5	Neonatal Opioid Withdrawal Syndrome	11	DESCRIPTION
5.6	Adrenal Insufficiency	12	CLINICAL PHARMACOLOGY
5.7	Dependence	12.1	Mechanism of Action
5.8	Hepatitis, Hepatic Events	12.2	Pharmacodynamics
5.9	Allergic Reactions	12.3	Pharmacokinetics
5.10	Precipitation of Opioid Withdrawal Signs and Symptoms	13	NONCLINICAL TOXICOLOGY
5.11	Use in Opioid Naïve Patients	13.1	Carcinogenesis, Mutagenesis, Impairment of Fertility
5.12	Use in Patients with Impaired Hepatic Function	14	CLINICAL STUDIES
5.13	Impairment of Ability to Drive or Operate Machinery	16	HOW SUPPLIED / STORAGE AND HANDLING
5.14	Orthostatic Hypotension	17	PATIENT COUNSELING INFORMATION
5.15	Elevation of Cerebrospinal Fluid Pressure	17.1	Safe Use
5.16	Elevation of Intrahepatic Bile Duct Pressure	17.2	Disposal of Unused SUBUTEX Sublingual Tablets
5.17	Effects in Acute Abdominal Conditions		
5.18	General Precautions		

* Sections or subsections omitted from the Full Prescribing Information are not listed.

FULL PRESCRIBING INFORMATION

1 INDICATIONS AND USAGE

SUBUTEX sublingual tablet is indicated for the treatment of opioid dependence and is preferred for induction. SUBUTEX sublingual tablet should be used as part of a complete treatment plan to include counseling and psychosocial support.

Under the Drug Addiction Treatment Act (DATA) codified at 21 U.S.C. 823(g), prescription use of this product in the treatment of opioid dependence is limited to healthcare providers who meet certain qualifying requirements, and who have notified the Secretary of Health and Human Services (HHS) of their intent to prescribe this product for the treatment of opioid dependence and have been assigned a unique identification number that must be included on every prescription.

2 DOSAGE AND ADMINISTRATION

2.1 Important Dosage and Administration Instructions

SUBUTEX sublingual tablet is administered sublingually as a single daily dose. SUBUTEX sublingual tablet contains no naloxone and is preferred for use only during induction. Following induction, SUBOXONE sublingual film or SUBOXONE sublingual tablet is preferred due to the presence of naloxone when clinical use includes unsupervised administration. The use of SUBUTEX sublingual tablet for unsupervised administration should be limited to those patients who cannot tolerate SUBOXONE sublingual film or SUBOXONE sublingual tablet; for example, those patients who have been shown to be hypersensitive to naloxone.

Medication should be prescribed in consideration of the frequency of visits. Provision of multiple refills is not advised early in treatment or without appropriate patient follow-up visits.

2.2 Induction

Prior to induction, consideration should be given to the type of opioid dependence (i.e., long- or short-acting opioid), the time since last opioid use, and the degree or level of opioid dependence. To avoid precipitating withdrawal, induction with SUBUTEX sublingual tablet should be undertaken when objective and clear signs of withdrawal are evident.

It is recommended that an adequate treatment dose, titrated to clinical effectiveness, should be achieved as rapidly as possible. In a one-month study, patients received 8 mg of SUBUTEX sublingual tablet on Day 1 and 16 mg SUBUTEX sublingual tablet on Day 2. From Day 3 onward, patients received either SUBOXONE sublingual tablet or SUBUTEX sublingual tablet at the same buprenorphine dose as Day 2 based on their assigned treatment. Induction in the studies of buprenorphine solution was accomplished over 3-4 days, depending on the target dose. In some studies, gradual induction over several days led to a high rate of drop-out of buprenorphine patients during the induction period.

Patients taking heroin or other short-acting opioids:

At treatment initiation, the dose of SUBUTEX sublingual tablet should be administered at least 4 hours after the patient last used opioids or preferably when moderate objective signs of opioid withdrawal appear.

Patients on methadone or other long-acting opioids:

There is little controlled experience with the transfer of methadone-maintained patients to buprenorphine. Available evidence suggests that withdrawal signs and symptoms are possible during induction onto buprenorphine. Withdrawal appears more likely in patients maintained on higher doses of methadone (>30 mg) and when the first buprenorphine dose is administered shortly after the last methadone dose. SUBUTEX sublingual tablet dosing should be initiated preferably when moderate

objective signs of opioid withdrawal appear.

2.3 Maintenance

- SUBOXONE is preferred for maintenance treatment.
- Where SUBUTEX is used in maintenance in patients who cannot tolerate the presence of naloxone, the dosage of SUBUTEX should be progressively adjusted in increments / decrements of 2 mg or 4 mg buprenorphine to a level that holds the patient in treatment and suppresses opioid withdrawal signs and symptoms.
- The maintenance dose is generally in the range of 4 mg to 24 mg buprenorphine per day depending on the individual patient. Doses higher than this have not been demonstrated to provide any clinical advantage.
- When determining the prescription quantity for unsupervised administration, consider the patient's level of stability, the security of his or her home situation, and other factors likely to affect the ability to manage supplies of take-home medication.

2.4 Method of Administration

SUBUTEX sublingual tablet should be placed under the tongue until it is dissolved. For doses requiring the use of more than two tablets, patients are advised to either place all the tablets at once or alternatively (if they cannot fit in more than two tablets comfortably), place two tablets at a time under the tongue. Either way, the patients should continue to hold the tablets under the tongue until they dissolve; swallowing the tablets reduces the bioavailability of the drug. To ensure consistency in bioavailability, patients should follow the same manner of dosing with continued use of the product. Proper administration technique should be demonstrated to the patient.

2.5 Clinical Supervision

Treatment should be initiated with supervised administration, progressing to unsupervised administration as the patient's clinical stability permits. The use of SUBUTEX for unsupervised administration should be limited to those patients who cannot tolerate SUBOXONE, for example those patients with known hypersensitivity to naloxone. SUBOXONE and SUBUTEX are both subject to diversion and abuse. When determining the size of the prescription quantity for unsupervised administration, consider the patient's level of stability, the security of his or her home situation, and other factors likely to affect the ability of the patient to manage supplies of take-home medication.

Ideally, patients should be seen at reasonable intervals (e.g., at least weekly during the first month of treatment) based upon the individual circumstances of the patient. Medication should be prescribed in consideration of the frequency of visits. Provision of multiple refills is not advised early in treatment or without appropriate patient follow-up visits. Periodic assessment is necessary to determine compliance with the dosing regimen, effectiveness of the treatment plan, and overall patient progress.

Once a stable dosage has been achieved and patient assessment (e.g., urine drug screening) does not indicate illicit drug use, less frequent follow-up visits may be appropriate. A once-monthly visit schedule may be reasonable for patients on a stable dosage of medication who are making progress toward their treatment objectives. Continuation or modification of pharmacotherapy should be based on the healthcare provider's evaluation of treatment outcomes and objectives such as:

1. Absence of medication toxicity.
2. Absence of medical or behavioral adverse effects.

3. Responsible handling of medications by the patient.
4. Patient's compliance with all elements of the treatment plan (including recovery-oriented activities, psychotherapy, and/or other psychosocial modalities).
5. Abstinence from illicit drug use (including problematic alcohol and/or benzodiazepine use).

If treatment goals are not being achieved, the healthcare provider should re-evaluate the appropriateness of continuing the current treatment.

2.6 Patients with Hepatic Impairment

Severe hepatic impairment: Consider reducing the starting and titration incremental dose by half compared to patients with normal liver function, and monitor for signs and symptoms of toxicity or overdose caused by increased levels of buprenorphine.

Moderate hepatic impairment: Although no dose adjustment is necessary for patients with moderate hepatic impairment, SUBUTEX sublingual tablets should be used with caution in these patients and prescribers should monitor patients for signs and symptoms of toxicity or overdose caused by increased levels of buprenorphine.

Mild hepatic impairment: No clinically significant differences in pharmacokinetic parameters were observed in subjects with mild hepatic impairment. No dose adjustment is needed in patients with mild hepatic impairment [see *Warnings and Precautions (5.12)*].

2.7 Unstable Patients

Healthcare providers will need to decide when they cannot appropriately provide further management for particular patients. For example, some patients may be abusing or dependent on various drugs, or unresponsive to psychosocial intervention such that the healthcare provider does not feel that he/she has the expertise to manage the patient. In such cases, the healthcare provider may want to assess whether to refer the patient to a specialist or more intensive behavioral treatment environment. Decisions should be based on a treatment plan established and agreed upon with the patient at the beginning of treatment.

Patients who continue to misuse, abuse, or divert buprenorphine products or other opioids should be provided with, or referred to, more intensive and structured treatment.

2.8 Stopping Treatment

The decision to discontinue therapy with SUBOXONE or SUBUTEX after a period of maintenance should be made as part of a comprehensive treatment plan. Both gradual and abrupt discontinuation of buprenorphine has been used, but the data are insufficient to determine the best method of dose taper at the end of treatment.

3 DOSAGE FORMS AND STRENGTHS

SUBUTEX sublingual tablet is supplied as an uncoated oval white tablet in two dosage strengths:

- buprenorphine 2 mg, and
- buprenorphine 8 mg

4 CONTRAINDICATIONS

SUBUTEX sublingual tablet should not be administered to patients who have been shown to be hypersensitive to buprenorphine, as serious adverse reactions, including anaphylactic shock, have been reported [see *Warnings and Precautions (5.9)*].

5 WARNINGS AND PRECAUTIONS

5.1 Abuse Potential

Buprenorphine can be abused in a manner similar to other opioids, legal or illicit. Prescribe and dispense buprenorphine with appropriate precautions to minimize risk of misuse, abuse, or diversion, and ensure appropriate protection from theft, including in the home. Clinical monitoring appropriate to the patient's level of stability is essential. Multiple refills should not be prescribed early in treatment or without appropriate patient follow-up visits [see *Drug Abuse and Dependence (9.2)*].

5.2 Respiratory Depression

Buprenorphine, particularly when taken by the IV route, in combination with benzodiazepines or other CNS depressants (including alcohol), has been associated with significant respiratory depression and death. Many, but not all post-marketing reports regarding coma and death associated with the concomitant use of buprenorphine and benzodiazepines involved misuse by self-injection. Deaths have also been reported in association with concomitant administration of buprenorphine with other depressants such as alcohol or other CNS depressant drugs. Patients should be warned of the potential danger of self-administration of benzodiazepines or other depressants while under treatment with SUBUTEX sublingual tablet [see *Drug Interactions (7)*].

In the case of overdose, the primary management should be the re-establishment of adequate ventilation with mechanical assistance of respiration, if required. Naloxone may be of value for the management of buprenorphine overdose. Higher than normal doses and repeated administration may be necessary.

SUBUTEX sublingual tablet should be used with caution in patients with compromised respiratory function (e.g., chronic obstructive pulmonary disease, cor pulmonale, decreased respiratory reserve, hypoxia, hypercapnia, or pre-existing respiratory depression).

5.3 CNS Depression

Patients receiving buprenorphine in the presence of opioid analgesics, general anesthetics, benzodiazepines, phenothiazines, other tranquilizers, sedative/hypnotics or other CNS depressants (including alcohol) may exhibit increased CNS depression. Consider dose reduction of CNS depressants, SUBUTEX sublingual tablet, or both in situations of concomitant prescribing [see *Drug Interactions (7)*].

5.4 Unintentional Pediatric Exposure

Buprenorphine can cause severe, possibly fatal, respiratory depression in children who are accidentally exposed to it. Store buprenorphine-containing medications safely out of the sight and reach of children and destroy any unused medication appropriately [see *Patient Counseling (17.1)*].

5.5 Neonatal Opioid Withdrawal Syndrome

Neonatal opioid withdrawal syndrome (NOWS) is an expected and treatable outcome of prolonged use of opioids during pregnancy, whether that use is medically-authorized or illicit. Unlike opioid withdrawal syndrome in adults, NOWS may be life-threatening if not recognized and treated in the neonate.

Healthcare professionals should observe newborns for signs of NOWS and manage accordingly [see *Use in Specific Populations (8.1)*].

Advise pregnant women receiving opioid addiction treatment with SUBUTEX of the risk of neonatal opioid withdrawal syndrome and ensure that appropriate treatment will be available [see *Use in Specific Populations (8.1)*]. This risk must be balanced against the risk of untreated opioid addiction which often results in continued or relapsing illicit opioid use and is associated with poor pregnancy outcomes. Therefore, prescribers should discuss the importance and benefits of management of opioid addiction throughout pregnancy.

5.6 Adrenal Insufficiency

Cases of adrenal insufficiency have been reported with opioid use, more often following greater than one month of use. Presentation of adrenal insufficiency may include non-specific symptoms and signs including nausea, vomiting, anorexia, fatigue, weakness, dizziness, and low blood pressure. If adrenal insufficiency is suspected, confirm the diagnosis with diagnostic testing as soon as possible. If adrenal insufficiency is diagnosed, treat with physiologic replacement doses of corticosteroids. Wean the patient off of the opioid to allow adrenal function to recover and continue corticosteroid treatment until adrenal function recovers. Other opioids may be tried as some cases reported use of a different opioid without recurrence of adrenal insufficiency. The information available does not identify any particular opioids as being more likely to be associated with adrenal insufficiency.

5.7 Dependence

Buprenorphine is a partial agonist at the mu-opioid receptor and chronic administration produces physical dependence of the opioid type, characterized by withdrawal signs and symptoms upon abrupt discontinuation or rapid taper. The withdrawal syndrome is typically milder than seen with full agonists and may be delayed in onset. Buprenorphine can be abused in a manner similar to other opioids. This should be considered when prescribing or dispensing buprenorphine in situations when the clinician is concerned about an increased risk of misuse, abuse, or diversion [see *Drug Abuse and Dependence (9.3)*].

5.8 Hepatitis, Hepatic Events

Cases of cytolytic hepatitis and hepatitis with jaundice have been observed in individuals receiving buprenorphine in clinical trials and through post-marketing adverse event reports. The spectrum of abnormalities ranges from transient asymptomatic elevations in hepatic transaminases to case reports of death, hepatic failure, hepatic necrosis, hepatorenal syndrome, and hepatic encephalopathy. In many cases, the presence of pre-existing liver enzyme abnormalities, infection with hepatitis B or hepatitis C virus, concomitant usage of other potentially hepatotoxic drugs, and ongoing injecting drug use may have played a causative or contributory role. In other cases, insufficient data were available to determine the etiology of the abnormality. Withdrawal of buprenorphine has resulted in amelioration of acute hepatitis in some cases; however, in other cases no dose reduction was necessary. The possibility exists that buprenorphine had a causative or contributory role in the development of the hepatic abnormality in some cases. Liver function tests, prior to initiation of treatment is recommended to establish a baseline. Periodic monitoring of liver function during treatment is also recommended. A biological and etiological evaluation is recommended when a hepatic event is suspected. Depending on the case, SUBUTEX sublingual tablet may need to be carefully discontinued to prevent withdrawal signs and symptoms and a return by the patient to illicit drug use, and strict monitoring of the patient should be initiated.

5.9 Allergic Reactions

Cases of hypersensitivity to buprenorphine products have been reported both in clinical trials and in the post-marketing experience. Cases of bronchospasm, angioneurotic edema, and anaphylactic shock have been reported. The most common signs and symptoms include rashes, hives, and pruritus. A history of hypersensitivity to buprenorphine is a contraindication to the use of SUBUTEX sublingual tablet.

5.10 Precipitation of Opioid Withdrawal Signs and Symptoms

Because of the partial agonist properties of buprenorphine, SUBUTEX sublingual tablet may precipitate opioid withdrawal signs and symptoms in individuals physically dependent on full opioid agonists if administered sublingually or parenterally before the agonist effects of other opioids have subsided.

5.11 Use in Opioid Naïve Patients

There have been reported deaths of opioid naïve individuals who received a 2 mg dose of buprenorphine as a sublingual tablet for analgesia. SUBUTEX sublingual tablet is not appropriate as an analgesic.

5.12 Use in Patients with Impaired Hepatic Function

In a pharmacokinetic study, buprenorphine plasma levels were found to be higher and the half-life was found to be longer in subjects with moderate and severe hepatic impairment, but not in subjects with mild hepatic impairment.

For patients with severe hepatic impairment, a dose adjustment is recommended, and patients with moderate or severe hepatic impairment should be monitored for signs and symptoms of toxicity or overdose caused by increased levels of buprenorphine [*see Dosage and Administration (2.6) and Use in Specific Populations (8.6)*].

5.13 Impairment of Ability to Drive or Operate Machinery

SUBUTEX sublingual tablet may impair the mental or physical abilities required for the performance of potentially dangerous tasks such as driving a car or operating machinery, especially during treatment induction and dose adjustment. Patients should be cautioned about driving or operating hazardous machinery until they are reasonably certain that buprenorphine therapy does not adversely affect his or her ability to engage in such activities.

5.14 Orthostatic Hypotension

Like other opioids, SUBUTEX sublingual tablet may produce orthostatic hypotension in ambulatory patients.

5.15 Elevation of Cerebrospinal Fluid Pressure

Buprenorphine, like other opioids, may elevate cerebrospinal fluid pressure and should be used with caution in patients with head injury, intracranial lesions and other circumstances when cerebrospinal pressure may be increased. Buprenorphine can produce miosis and changes in the level of consciousness that may interfere with patient evaluation.

5.16 Elevation of Intrahepatic Pressure

Buprenorphine has been shown to increase intrahepatic pressure, as do other opioids, and thus should be administered with caution to patients with dysfunction of the biliary tract.

5.17 Effects in Acute Abdominal Conditions

As with other opioids, buprenorphine may obscure the diagnosis or clinical course of patients with acute abdominal conditions.

5.18 General Precautions

SUBUTEX sublingual tablet should be administered with caution in debilitated patients and those with myxedema or hypothyroidism; adrenal cortical insufficiency (e.g., Addison's disease); CNS depression or coma; toxic psychoses; prostatic hypertrophy or urethral stricture; acute alcoholism; delirium tremens; or kyphoscoliosis.

6 ADVERSE REACTIONS

6.1 Clinical Trials Experience

Because clinical trials are conducted under widely varying conditions, adverse reaction rates observed in the clinical trials of a drug cannot be directly compared to rates in the clinical trials of another drug and may not reflect the rates observed in practice.

The safety of SUBUTEX sublingual tablet was supported by clinical trials using SUBUTEX sublingual tablet, SUBOXONE (buprenorphine/naloxone sublingual tablet) and other trials using buprenorphine sublingual solutions. In total, safety data were available from 3214 opioid-dependent subjects exposed to buprenorphine at doses in the range used in treatment of opioid addiction.

Few differences in adverse event profile were noted between SUBUTEX or buprenorphine administered as a sublingual solution.

The following adverse events were reported to occur by at least 5% of patients in a 4-week study (Table 1).

Table 1. Adverse Events ≥ 5% by Body System and Treatment Group in a 4-week study		
	N (%)	N (%)
Body System / Adverse Event (COSTART Terminology)	SUBUTEX 16 mg/day N=103	Placebo N=107
Body as a Whole		
Asthenia	5 (4.9%)	7 (6.5%)
Chills	8 (7.8%)	8 (7.5%)
Headache	30 (29.1%)	24 (22.4%)
Infection	12 (11.7%)	7 (6.5%)
Pain	19 (18.4%)	20 (18.7%)
Pain Abdomen	12 (11.7%)	7 (6.5%)
Pain Back	8 (7.8%)	12 (11.2%)
Withdrawal Syndrome	19 (18.4%)	40 (37.4%)
Cardiovascular System		
Vasodilation	4 (3.9%)	7 (6.5%)
Digestive System		
Constipation	8 (7.8%)	3 (2.8%)
Diarrhea	5 (4.9%)	16 (15.0%)
Nausea	14 (13.6%)	12 (11.2%)
Vomiting	8 (7.8%)	5 (4.7%)
Nervous System		
Insomnia	22 (21.4%)	17 (15.9%)
Respiratory System		
Rhinitis	10 (9.7%)	14 (13.1%)
Skin and Appendages		
Sweating	13 (12.6%)	11 (10.3%)

The adverse event profile of buprenorphine was also characterized in the dose-controlled study of buprenorphine solution, over a range of doses in four months of treatment. Table 2 shows adverse events reported by at least 5% of subjects in any dose group in the dose-controlled study.

Table 2. Adverse Events (≥ 5%) by Body System and Treatment Group in a 16-week Study					
Body System /Adverse Event (COSTART Terminology)	Buprenorphine Dose*				
	Very Low* (N=184)	Low* (N=180)	Moderate* (N=186)	High* (N=181)	Total* (N=731)
	N (%)	N (%)	N (%)	N (%)	N (%)
*Sublingual solution. Doses in this table cannot necessarily be delivered in tablet form, but for comparison purposes: "Very low" dose (1 mg solution) would be less than a tablet dose of 2 mg "Low" dose (4 mg solution) approximates a 6 mg tablet dose "Moderate" dose (8 mg solution) approximates a 12 mg tablet dose "High" dose (16 mg solution) approximates a 24 mg tablet dose					
Body as a Whole					
Abscess	9 (5%)	2 (1%)	3 (2%)	2 (1%)	16 (2%)
Asthenia	26 (14%)	28 (16%)	26 (14%)	24 (13%)	104 (14%)
Chills	11 (6%)	12 (7%)	9 (5%)	10 (6%)	42 (6%)
Fever	7 (4%)	2 (1%)	2 (1%)	10 (6%)	21 (3%)
Flu Syndrome	4 (2%)	13 (7%)	19 (10%)	8 (4%)	44 (6%)
Headache	51 (28%)	62 (34%)	54 (29%)	53 (29%)	220 (30%)
Infection	32 (17%)	39 (22%)	38 (20%)	40 (22%)	149 (20%)
Injury Accidental	5 (3%)	10 (6%)	5 (3%)	5 (3%)	25 (3%)
Pain	47 (26%)	37 (21%)	49 (26%)	44 (24%)	177 (24%)
Pain Back	18 (10%)	29 (16%)	28 (15%)	27 (15%)	102 (14%)
Withdrawal Syndrome	45 (24%)	40 (22%)	41 (22%)	36 (20%)	162 (22%)
Digestive System					
Constipation	10 (5%)	23 (13%)	23 (12%)	26 (14%)	82 (11%)
Diarrhea	19 (10%)	8 (4%)	9 (5%)	4 (2%)	40 (5%)
Dyspepsia	6 (3%)	10 (6%)	4 (2%)	4 (2%)	24 (3%)
Nausea	12 (7%)	22 (12%)	23 (12%)	18 (10%)	75 (10%)
Vomiting	8 (4%)	6 (3%)	10 (5%)	14 (8%)	38 (5%)
Nervous System					
Anxiety	22 (12%)	24 (13%)	20 (11%)	25 (14%)	91 (12%)
Depression	24 (13%)	16 (9%)	25 (13%)	18 (10%)	83 (11%)
Dizziness	4 (2%)	9 (5%)	7 (4%)	11 (6%)	31 (4%)
Insomnia	42 (23%)	50 (28%)	43 (23%)	51 (28%)	186 (25%)
Nervousness	12 (7%)	11 (6%)	10 (5%)	13 (7%)	46 (6%)
Somnolence	5 (3%)	13 (7%)	9 (5%)	11 (6%)	38 (5%)

Respiratory System					
Cough Increase	5 (3%)	11 (6%)	6 (3%)	4 (2%)	26 (4%)
Pharyngitis	6 (3%)	7 (4%)	6 (3%)	9 (5%)	28 (4%)
Rhinitis	27 (15%)	16 (9%)	15 (8%)	21 (12%)	79 (11%)
Skin and Appendages					
Sweat	23 (13%)	21 (12%)	20 (11%)	23 (13%)	87 (12%)
Special Senses					
Runny Eyes	13 (7%)	9 (5%)	6 (3%)	6 (3%)	34 (5%)

6.2 Postmarketing Experience

The following adverse reactions have been identified during post approval use of buprenorphine. Because these reactions are reported voluntarily from a population of uncertain size, it is not always possible to reliably estimate their frequency or establish a causal relationship to drug exposure.

The most frequently reported post-marketing adverse events with SUBUTEX not observed in clinical trials, excluding drug exposure during pregnancy, was drug misuse or abuse.

Serotonin syndrome: Cases of serotonin syndrome, a potentially life-threatening condition, have been reported during concomitant use of opioids with serotonergic drugs.

Adrenal insufficiency: Cases of adrenal insufficiency have been reported with opioid use, more often following greater than one month of use.

Anaphylaxis: Anaphylaxis has been reported with ingredients contained in SUBUTEX.

Androgen deficiency: Cases of androgen deficiency have occurred with chronic use of opioids [see *Clinical Pharmacology (12.2)*].

7 DRUG INTERACTIONS

Table 3 Includes clinically significant drug interactions with SUBUTEX

Benzodiazepines	
<i>Clinical Impact:</i>	There have been a number of reports regarding coma and death associated with the misuse and abuse of the combination of buprenorphine and benzodiazepines. In many, but not all of these cases, buprenorphine was misused by self-injection of crushed buprenorphine tablets. Preclinical studies have shown that the combination of benzodiazepines and buprenorphine altered the usual ceiling effect on buprenorphine-induced respiratory depression, making the respiratory effects of buprenorphine appear similar to those of full opioid agonists.
<i>Intervention:</i>	Closely monitor patients with concurrent use of SUBUTEX and benzodiazepines. Warn patients that it is extremely dangerous to self-administer benzodiazepines while taking SUBUTEX, and warn patients to use benzodiazepines concurrently with SUBUTEX only as directed by their healthcare provider.
Non-Benzodiazepine Central Nervous System (CNS) Depressants	

<i>Clinical Impact:</i>	Due to additive pharmacologic effects, the concomitant use of non-benzodiazepine CNS depressants, including alcohol, can increase the risk of hypotension, respiratory depression, profound sedation, coma, and death.
<i>Intervention:</i>	Reserve concomitant prescribing of these drugs for use in patients for whom alternative treatment options are inadequate. Limit dosages and durations to the minimum required. Follow patients closely for signs of respiratory depression and sedation [see <i>Warnings and Precautions (5.2, 5.3)</i>].
<i>Examples:</i>	Alcohol, non-benzodiazepine sedatives/hypnotics, anxiolytics, tranquilizers, muscle relaxants, general anesthetics, antipsychotics, and other opioids.
Inhibitors of CYP3A4	
<i>Clinical Impact:</i>	<p>The concomitant use of buprenorphine and CYP3A4 inhibitors can increase the plasma concentration of buprenorphine, resulting in increased or prolonged opioid effects, particularly when an inhibitor is added after a stable dose of SUBUTEX is achieved.</p> <p>After stopping a CYP3A4 inhibitor, as the effects of the inhibitor decline, the buprenorphine plasma concentration will decrease [see <i>Clinical Pharmacology (12.3)</i>], potentially resulting in decreased opioid efficacy or a withdrawal syndrome in patients who had developed physical dependence to buprenorphine.</p>
<i>Intervention:</i>	<p>If concomitant use is necessary, consider dosage reduction of SUBUTEX until stable drug effects are achieved. Monitor patients for respiratory depression and sedation at frequent intervals.</p> <p>If a CYP3A4 inhibitor is discontinued, consider increasing the SUBUTEX dosage until stable drug effects are achieved. Monitor for signs of opioid withdrawal.</p>
<i>Examples:</i>	Macrolide antibiotics (e.g., erythromycin), azole-antifungal agents (e.g. ketoconazole), protease inhibitors (e.g., ritonavir)
CYP3A4 Inducers	
<i>Clinical Impact:</i>	<p>The concomitant use of buprenorphine and CYP3A4 inducers can decrease the plasma concentration of buprenorphine [see <i>Clinical Pharmacology (12.3)</i>], potentially resulting in decreased efficacy or onset of a withdrawal syndrome in patients who have developed physical dependence to buprenorphine.</p> <p>After stopping a CYP3A4 inducer, as the effects of the inducer decline, the buprenorphine plasma concentration will increase [see <i>Clinical Pharmacology (12.3)</i>], which could increase or prolong both therapeutic effects and adverse reactions and may cause serious respiratory depression.</p>
<i>Intervention:</i>	<p>If concomitant use is necessary, consider increasing the SUBUTEX dosage until stable drug effects are achieved. Monitor for signs of opioid withdrawal.</p> <p>If a CYP3A4 inducer is discontinued, consider SUBUTEX dosage reduction and monitor for signs of respiratory depression.</p>
<i>Examples:</i>	Rifampin, carbamazepine, phenytoin
Antiretrovirals: Non-nucleoside reverse transcriptase inhibitors (NNRTIs)	
<i>Clinical Impact:</i>	Non-nucleoside reverse transcriptase inhibitors (NNRTIs) are metabolized principally by CYP3A4. Efavirenz, nevirapine, and etravirine are known CYP3A

	inducers, whereas delavirdine is a CYP3A inhibitor. Significant pharmacokinetic interactions between NNRTIs (e.g., efavirenz and delavirdine) and buprenorphine have been shown in clinical studies, but these pharmacokinetic interactions did not result in any significant pharmacodynamic effects.
<i>Intervention:</i>	Patients who are on chronic SUBUTEX treatment should have their dose monitored if NNRTIs are added to their treatment regimen.
<i>Examples:</i>	efavirenz, nevirapine, etravirine, delavirdine
Antiretrovirals: Protease inhibitors (PIs)	
<i>Clinical Impact:</i>	Studies have shown some antiretroviral protease inhibitors (PIs) with CYP3A4 inhibitory activity (nelfinavir, lopinavir/ritonavir, ritonavir) have little effect on buprenorphine pharmacokinetic and no significant pharmacodynamic effects. Other PIs with CYP3A4 inhibitory activity (atazanavir and atazanavir/ritonavir) resulted in elevated levels of buprenorphine and norbuprenorphine, and patients in one study reported increased sedation. Symptoms of opioid excess have been found in post-marketing reports of patients receiving buprenorphine and atazanavir with and without ritonavir concomitantly.
<i>Intervention:</i>	Monitor patients taking SUBUTEX and atazanavir with and without ritonavir, and reduce dose of SUBUTEX if warranted.
<i>Examples:</i>	atazanavir, ritonavir
Antiretrovirals: Nucleoside reverse transcriptase inhibitors (NRTIs)	
<i>Clinical Impact:</i>	Nucleoside reverse transcriptase inhibitors (NRTIs) do not appear to induce or inhibit the P450 enzyme pathway, thus no interactions with buprenorphine are expected.
<i>Intervention:</i>	None
Serotonergic Drugs	
<i>Clinical Impact:</i>	The concomitant use of opioids with other drugs that affect the serotonergic neurotransmitter system has resulted in serotonin syndrome.
<i>Intervention:</i>	If concomitant use is warranted, carefully observe the patient, particularly during treatment initiation and dose adjustment. Discontinue SUBUTEX if serotonin syndrome is suspected.
<i>Examples:</i>	Selective serotonin reuptake inhibitors (SSRIs), serotonin and norepinephrine reuptake inhibitors (SNRIs), tricyclic antidepressants (TCAs), triptans, 5-HT ₃ receptor antagonists, drugs that affect the serotonin neurotransmitter system (e.g., mirtazapine, trazodone, tramadol), monoamine oxidase (MAO) inhibitors (those intended to treat psychiatric disorders and also others, such as linezolid and intravenous methylene blue).
Monoamine Oxidase Inhibitors (MAOIs)	
<i>Clinical Impact:</i>	MAOI interactions with opioids may manifest as serotonin syndrome or opioid toxicity (e.g., respiratory depression, coma).
<i>Intervention:</i>	The use of SUBUTEX is not recommended for patients taking MAOIs or within 14 days of stopping such treatment.
<i>Examples:</i>	phenelzine, tranylcypromine, linezolid
Muscle Relaxants	
<i>Clinical Impact:</i>	Buprenorphine may enhance the neuromuscular blocking action of skeletal muscle relaxants and produce an increased degree of respiratory depression.
<i>Intervention:</i>	Monitor patients receiving muscle relaxants and SUBUTEX for signs of respiratory depression that may be greater than otherwise expected and

	decrease the dosage of SUBUTEX and/or the muscle relaxant as necessary.
Diuretics	
<i>Clinical Impact:</i>	Opioids can reduce the efficacy of diuretics by inducing the release of antidiuretic hormone.
<i>Intervention:</i>	Monitor patients for signs of diminished diuresis and/or effects on blood pressure and increase the dosage of the diuretic as needed.
Anticholinergic Drugs	
<i>Clinical Impact:</i>	The concomitant use of anticholinergic drugs may increase the risk of urinary retention and/or severe constipation, which may lead to paralytic ileus.
<i>Intervention:</i>	Monitor patients for signs of urinary retention or reduced gastric motility when SUBUTEX is used concomitantly with anticholinergic drugs.

8 USE IN SPECIFIC POPULATIONS

8.1 Pregnancy

Risk Summary

There are no adequate and well-controlled studies of SUBUTEX tablets or buprenorphine in pregnant women. Limited published data on use of buprenorphine, the active ingredient in SUBUTEX, in pregnancy, have not shown an increased risk of major malformations. Reproductive and developmental studies in rats and rabbits identified adverse events at clinically relevant and higher doses. Embryofetal death was observed in both rats and rabbits administered buprenorphine during the period of organogenesis at doses approximately 6 and 0.3 times, respectively, the human sublingual dose of 16 mg/day of buprenorphine. Pre- and postnatal development studies in rats demonstrated increased neonatal deaths at 0.3 times and above and dystocia at approximately 3 times the human sublingual dose of 16 mg/day of buprenorphine. No clear teratogenic effects were seen when buprenorphine was administered during organogenesis with a range of doses equivalent to or greater than the human sublingual dose of 16 mg/day of buprenorphine. However, increases in skeletal abnormalities were noted in rats and rabbits administered buprenorphine daily during organogenesis at doses approximately 0.6 times and approximately equal to the human sublingual dose of 16 mg/day of buprenorphine, respectively. In a few studies, some events such as acephalus and omphalocele were also observed but these findings were not clearly treatment-related [see Data].

The estimated background risk of major birth defects and miscarriage for the indicated population is unknown. All pregnancies have a background risk of birth defect, loss, or other adverse outcomes. In the U.S. general population, the estimated background risk of major birth defects and miscarriage in clinically recognized pregnancies is 2-4% and 15-20%, respectively.

Clinical Considerations

Disease-associated maternal and embryo-fetal risk

Untreated opioid addiction in pregnancy is associated with adverse obstetrical outcomes such as low birth weight, preterm birth, and fetal death. In addition, untreated opioid addiction often results in continued or relapsing illicit opioid use.

Fetal/neonatal adverse reactions

Neonatal opioid withdrawal syndrome may occur in newborn infants of mothers who are receiving treatment with SUBUTEX.

Neonatal opioid withdrawal syndrome presents as irritability, hyperactivity and abnormal sleep pattern, high pitched cry, tremor, vomiting, diarrhea, and/or failure to gain weight. Signs of neonatal withdrawal usually occur in the first days after birth. The duration and severity of neonatal opioid withdrawal syndrome may vary. Observe newborns for signs of neonatal opioid withdrawal syndrome and manage accordingly [see *Warnings and Precautions (5.5)*].

Labor or Delivery

As with all opioids, use of buprenorphine prior to delivery may result in respiratory depression in the newborn.

Closely monitor neonates for signs of respiratory depression. An opioid antagonist such as naloxone should be available for reversal of opioid induced respiratory depression in the neonate.

Data

Human Data

Studies have been conducted to evaluate neonatal outcomes in women exposed to buprenorphine during pregnancy. Limited published data on malformations from trials, observational studies, case series, and case reports on buprenorphine use in pregnancy have not shown an increased risk of major malformations. Based on these studies the incidence of neonatal abstinence syndrome is not clear and there does not appear to be a dose-response relationship.

Animal Data

The exposure margins listed below are based on body surface area comparisons (mg/m^2) to the human sublingual dose of 16 mg buprenorphine via SUBUTEX.

No definitive drug-related teratogenic effects were observed in rats and rabbits at IM doses up to 30 mg/kg/day (estimated exposure approximately 20 times and 35 times, respectively, the human sublingual dose of 16 mg). Maternal toxicity resulting in mortality was noted in these studies in both rats and rabbits. Acephalus was observed in one rabbit fetus from the low-dose group and omphalocele was observed in two rabbit fetuses from the same litter in the mid-dose group; no findings were observed in fetuses from the high-dose group. Maternal toxicity was seen in the high-dose group but not at the lower doses where the findings were observed. Following oral administration of buprenorphine to rats, dose-related post-implantation losses, evidenced by increases in the numbers of early resorptions with consequent reductions in the numbers of fetuses, were observed at doses of 10 mg/kg/day or greater (estimated exposure approximately 6 times the human sublingual dose of 16 mg). In the rabbit, increased post-implantation losses occurred at an oral dose of 40 mg/kg/day. Following IM administration in the rat and the rabbit, post-implantation losses, as evidenced by decreases in live fetuses and increases in resorptions, occurred at 30 mg/kg/day.

Buprenorphine was not teratogenic in rats or rabbits after IM or subcutaneous (SC) doses up to 5 mg/kg/day (estimated exposure was approximately 3 and 6 times, respectively, the human sublingual dose of 16 mg), after IV doses up to 0.8 mg/kg/day (estimated exposure was approximately 0.5 times and equal to, respectively, the human sublingual dose of 16 mg), or after oral doses up to 160 mg/kg/day in rats (estimated exposure was approximately 95 times the human sublingual dose of 16 mg) and 25 mg/kg/day in rabbits (estimated exposure was approximately 30 times the human sublingual dose of 16 mg). Significant increases in skeletal abnormalities (e.g., extra thoracic vertebra or thoraco-

lumbar ribs) were noted in rats after SC administration of 1 mg/kg/day and up (estimated exposure was approximately 0.6 times the human sublingual dose of 16 mg), but were not observed at oral doses up to 160 mg/kg/day. Increases in skeletal abnormalities in rabbits after IM administration of 5 mg/kg/day (estimated exposure was approximately 6 times the human sublingual dose of 16 mg) in the absence of maternal toxicity or oral administration of 1 mg/kg/day or greater (estimated exposure was approximately equal to the human sublingual dose of 16 mg) were not statistically significant.

In rabbits, buprenorphine produced statistically significant pre-implantation losses at oral doses of 1 mg/kg/day or greater and post-implantation losses that were statistically significant at IV doses of 0.2 mg/kg/day or greater (estimated exposure approximately 0.3 times the human sublingual dose of 16 mg). No maternal toxicity was noted at doses causing post-implantation loss in this study. Dystocia was noted in pregnant rats treated intramuscularly with buprenorphine from Gestation Day 14 through Lactation Day 21 at 5 mg/kg/day (approximately 3 times the human sublingual dose of 16 mg).

Fertility, and pre- and post-natal development studies with buprenorphine in rats indicated increases in neonatal mortality after oral doses of 0.8 mg/kg/day and up (approximately 0.5 times the human sublingual dose of 16 mg), after IM doses of 0.5 mg/kg/day and up (approximately 0.3 times the human sublingual dose of 16 mg), and after SC doses of 0.1 mg/kg/day and up (approximately 0.06 times the human sublingual dose of 16 mg). An apparent lack of milk production during these studies likely contributed to the decreased pup viability and lactation indices.

Delays in the occurrence of righting reflex and startle response were noted in rat pups at an oral dose of 80 mg/kg/day (approximately 50 times the human sublingual dose of 16 mg).

8.2 Lactation

Risk Summary

Based on two studies in 13 lactating women, buprenorphine and its metabolite norbuprenorphine are present in low levels in human milk and infant urine, and available data have not shown adverse reactions in breastfed infants. There are no data on the combination product buprenorphine/naloxone in breastfeeding, however oral absorption of naloxone is minimal. Caution should be exercised when SUBUTEX is administered to a nursing woman. The developmental and health benefits of breastfeeding should be considered along with the mother's clinical need for SUBUTEX and any potential adverse effects on the breastfed child from the drug or from the underlying maternal condition.

Clinical Considerations

Advise the nursing mother taking SUBUTEX to monitor the infant for increased drowsiness and breathing difficulties.

Data

Based on limited data from a study of 6 lactating women who were taking a median oral dose of buprenorphine of 0.29 mg/kg/day 5-8 days after delivery, breast milk contained a median infant dose of 0.42 mcg/kg/day of buprenorphine and 0.33 mcg/kg/day of norbuprenorphine, which are equal to 0.2% and 0.12% of the maternal weight-adjusted dose.

Based on limited data from a study of 7 lactating women who were taking a median oral dose of buprenorphine of 7 mg/day an average of 1.12 months after delivery, the mean milk concentrations of buprenorphine and norbuprenorphine were 3.65 mcg/L and 1.94 mcg/L respectively. Based on the limited data from this study, and assuming milk consumption of 150 mL/kg/day, an exclusively breastfed infant would receive an estimated mean of 0.55 mcg/kg/day of buprenorphine and 0.29 mcg/kg/day of norbuprenorphine, which are 0.38% and 0.18% of the maternal weight-adjusted dose.

No adverse reactions were observed in the infants in these two studies.

8.3 Females and Males of Reproductive Potential

Infertility

Chronic use of opioids may cause reduced fertility in females and males of reproductive potential. It is not known whether these effects on fertility are reversible [see *Adverse Reactions (6.2)*], *Clinical Pharmacology (12.2)*, *Nonclinical Toxicology (13.1)*].

8.4 Pediatric Use

The safety and effectiveness of SUBUTEX sublingual tablet has not been established in pediatric patients.

8.5 Geriatric Use

Clinical studies of SUBUTEX sublingual tablet, SUBOXONE sublingual film, or SUBOXONE sublingual tablet did not include sufficient numbers of subjects aged 65 and over to determine whether they responded differently than younger subjects. Other reported clinical experience has not identified differences in responses between the elderly and younger patients. In general, dose selection for an elderly patient should be cautious, usually starting at the low end of the dosing range, reflecting the greater frequency of decreased hepatic, renal, or cardiac function, and of concomitant disease or other drug therapy.

8.6 Hepatic Impairment

The effects of hepatic impairment on the pharmacokinetics of buprenorphine were evaluated in a pharmacokinetic study. Buprenorphine is extensively metabolized in the liver and buprenorphine plasma levels were found to be higher and the half-life was found to be longer in subjects with moderate and severe hepatic impairment, but not in subjects with mild hepatic impairment.

For patients with severe hepatic impairment, a dose adjustment is recommended, and patients with moderate or severe hepatic impairment should be monitored for signs and symptoms of toxicity or overdose caused by increased levels of buprenorphine.

[see *Dosage and Administration (2.5)*, *Warnings and Precautions (5.11)* and *Clinical Pharmacology (12.3)*].

8.7 Renal Impairment

No differences in buprenorphine pharmacokinetics were observed between 9 dialysis-dependent and 6 normal patients following IV administration of 0.3 mg buprenorphine.

9 DRUG ABUSE AND DEPENDENCE

9.1 Controlled Substance

Buprenorphine is a Schedule III narcotic under the Controlled Substances Act.

Under the Drug Addiction Treatment Act (DATA) codified at 21 U.S.C. 823(g), prescription use of this product in the treatment of opioid dependence is limited to healthcare providers who meet certain qualifying requirements, and who have notified the Secretary of Health and Human Services (HHS) of their intent to prescribe this product for the treatment of opioid dependence and have been assigned a unique identification number that must be included on every prescription.

9.2 Abuse

Buprenorphine, like morphine and other opioids, has the potential for being abused and is subject to criminal diversion. This should be considered when prescribing or dispensing buprenorphine in situations when the clinician is concerned about an increased risk of misuse, abuse, or diversion. Healthcare professionals should contact their state professional licensing board or state controlled substances authority for information on how to prevent and detect abuse or diversion of this product. Patients who continue to misuse, abuse, or divert, buprenorphine products or other opioids should be provided or referred for more intensive and structured treatment.

Abuse of buprenorphine poses a risk of overdose and death. This risk is increased with the abuse of buprenorphine and alcohol and other substances, especially benzodiazepines.

The healthcare provider may be able to more easily detect misuse or diversion by maintaining records of medication prescribed including date, dose, quantity, frequency of refills, and renewal requests of medication prescribed.

Proper assessment of the patient, proper prescribing practices, periodic re-evaluation of therapy, and proper handling and storage of the medication are appropriate measures that help to limit abuse of opioid drugs.

9.3 Dependence

Buprenorphine is a partial agonist at the mu-opioid receptor and chronic administration produces physical dependence of the opioid type, characterized by moderate withdrawal signs and symptoms upon abrupt discontinuation or rapid taper. The withdrawal syndrome is typically milder than seen with full agonists and may be delayed in onset. *[see Warnings and Precautions (5.7)]*

Neonatal opioid withdrawal syndrome (NOWS) is an expected and treatable outcome of prolonged use of opioids during pregnancy *[see Warnings and Precautions (5.5)]*.

10 OVERDOSAGE

The manifestations of acute overdose include pinpoint pupils, sedation, hypotension, respiratory depression, and death.

In the event of overdose, the respiratory and cardiac status of the patient should be monitored carefully. When respiratory or cardiac functions are depressed, primary attention should be given to the re-establishment of adequate respiratory exchange through provision of a patent airway and institution of assisted or controlled ventilation. Oxygen, IV fluids, vasopressors, and other supportive measures should be employed as indicated.

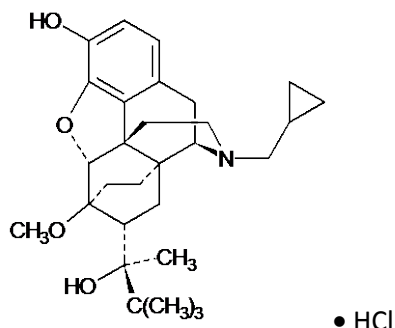
In the case of overdose, the primary management should be the re-establishment of adequate ventilation with mechanical assistance of respiration, if required. Naloxone may be of value for the management of buprenorphine overdose. Higher than normal doses and repeated administration may be necessary. The long duration of action of SUBUTEX should be taken into consideration when determining the length of treatment and medical surveillance needed to reverse the effects of an overdose. Insufficient duration of monitoring may put patients at risk.

11 DESCRIPTION

SUBUTEX (buprenorphine) sublingual tablet is an uncoated oval white tablet, imprinted with a sword logo on one side and an alphanumeric imprint identifying the product and strength. It contains buprenorphine HCl, a partial agonist at the mu-opioid receptor, and is available in two dosage strengths, 2 mg buprenorphine and 8 mg buprenorphine (as the free base, equivalent to 2.16 mg buprenorphine

hydrochloride USP and 8.64 mg buprenorphine hydrochloride USP). Each tablet also contains lactose, mannitol, cornstarch, povidone K30, citric acid, sodium citrate and magnesium stearate.

Chemically, buprenorphine HCl is (2S)-2-[17-Cyclopropylmethyl-4,5 α -epoxy-3-hydroxy-6-methoxy-6 α ,14-ethano-14 α -morphinan-7 α -yl]-3,3-dimethylbutan-2-ol hydrochloride. It has the following chemical structure:



Buprenorphine HCl has the molecular formula $C_{29}H_{41}NO_4 \cdot HCl$ and the molecular weight is 504.10. It is a white or off-white crystalline powder, sparingly soluble in water, freely soluble in methanol, soluble in alcohol and practically insoluble in cyclohexane.

12 CLINICAL PHARMACOLOGY

12.1 Mechanism of Action

SUBUTEX sublingual tablet contains buprenorphine, a partial agonist at the mu-opioid receptor and an antagonist at the kappa-opioid receptor.

12.2 Pharmacodynamics

Subjective Effects

Comparisons of buprenorphine to full opioid agonists such as methadone and hydromorphone suggest that sublingual buprenorphine produces typical opioid agonist effects which are limited by a ceiling effect.

Opioid agonist ceiling-effects were also observed in a double-blind, parallel group, dose-ranging comparison of single doses of buprenorphine sublingual solution (1, 2, 4, 8, 16, or 32 mg), placebo and a full agonist control at various doses. The treatments were given in ascending dose order at intervals of at least one week to 16 opioid-experienced subjects who were not physically dependent. Both active drugs produced typical opioid agonist effects. For all measures for which the drugs produced an effect, buprenorphine produced a dose-related response. However, in each case, there was a dose that produced no further effect. In contrast, the highest dose of the full agonist control always produced the greatest effects. Agonist objective rating scores remained elevated for the higher doses of buprenorphine (8-32 mg) longer than for the lower doses and did not return to baseline until 48 hours after drug administration. The onset of effects appeared more rapidly with buprenorphine than with the full agonist control, with most doses nearing peak effect after 100 minutes for buprenorphine compared to 150 minutes for the full agonist control.

Physiologic Effects

Buprenorphine in IV (2, 4, 8, 12 and 16 mg) and sublingual (12 mg) doses has been administered to opioid-experienced subjects who were not physically dependent to examine cardiovascular, respiratory and subjective effects at doses comparable to those used for treatment of opioid dependence. Compared to placebo, there were no statistically significant differences among any of the treatment conditions for blood pressure, heart rate, respiratory rate, O₂ saturation, or skin temperature across time. Systolic BP was higher in the 8 mg group than placebo (3-hour AUC values). Minimum and maximum effects were similar across all treatments. Subjects remained responsive to low voice and responded to computer prompts. Some subjects showed irritability, but no other changes were observed.

The respiratory effects of sublingual buprenorphine were compared with the effects of methadone in a double-blind, parallel group, dose ranging comparison of single doses of buprenorphine sublingual solution (1, 2, 4, 8, 16, or 32 mg) and oral methadone (15, 30, 45, or 60 mg) in non-dependent, opioid-experienced volunteers. In this study, hypoventilation not requiring medical intervention was reported more frequently after buprenorphine doses of 4 mg and higher than after methadone. Both drugs decreased O₂ saturation to the same degree.

Androgen Deficiency

Chronic use of opioids may influence the hypothalamic-pituitary-gonadal axis, leading to androgen deficiency that may manifest as low libido, impotence, erectile dysfunction, amenorrhea, or infertility. The causal role of opioids in the clinical syndrome of hypogonadism is unknown because the various medical, physical, lifestyle, and psychological stressors that may influence gonadal hormone levels have not been adequately controlled for in studies conducted to date. Patients presenting with symptoms of androgen deficiency should undergo laboratory evaluation.

12.3 Pharmacokinetics

Absorption

Plasma levels of buprenorphine increased with the sublingual dose of SUBUTEX sublingual tablet (Table 4). There was wide inter-patient variability in the sublingual absorption of buprenorphine, but within subjects the variability was low. Both C_{max} and AUC of buprenorphine increased in a linear fashion with the increase in dose (in the range of 4 to 16 mg), although the increase was not directly dose-proportional.

Table 4. Pharmacokinetic Parameters of Buprenorphine and Norbuprenorphine after the sublingual administration of SUBUTEX sublingual tablets

Dose	Analyte	Mean SD	C _{max} (ng/mL)	T _{max} (h)	AUC _{inf} (h•ng/mL)	t _{1/2} (h)
2 mg ^a	Buprenorphine	Mean SD	1.25 0.584	1.84 0.62	10.93 3.945	31.66 12.66
	Norbuprenorphine	Mean SD	0.301 0.127	2.36 2.75	12.39 4.526	39.28 20.85
8 mg ^b	Buprenorphine	Mean SD	2.88 1.14	1.28 0.46	28.39 10.22	35.01 14.7
	Norbuprenorphine	Mean SD	1.38 0.752	1.75 2.11	50.18 22.61	44.33 19.27
16 mg ^c	Buprenorphine	Mean SD	4.70 2.16	1.42 0.50	47.09 20.03	36.51 13.99
	Norbuprenorphine	Mean SD	2.65 1.62	1.52 1.34	92.31 34.74	40.35 12.07

^a Source: Study Report 20-A78-AU

^b Source: Study Report 20-276-SA

^c Source: Study Report 20-A79-AU

Distribution

Buprenorphine is approximately 96% protein bound, primarily to alpha and beta globulin.

Excretion

Metabolism

Buprenorphine undergoes both N-dealkylation to norbuprenorphine and glucuronidation. The N-dealkylation pathway is mediated primarily by CYP3A4. Norbuprenorphine, the major metabolite, can further undergo glucuronidation. Norbuprenorphine has been found to bind opioid receptors in vitro; however, it has not been studied clinically for opioid-like activity

Elimination

A mass balance study of buprenorphine showed complete recovery of radiolabel in urine (30%) and feces (69%) collected up to 11 days after dosing. Almost all of the dose was accounted for in terms of buprenorphine, norbuprenorphine, and two unidentified buprenorphine metabolites. In urine, most of buprenorphine and norbuprenorphine was conjugated (buprenorphine, 1% free and 9.4% conjugated; norbuprenorphine, 2.7% free and 11% conjugated). In feces, almost all of the buprenorphine and norbuprenorphine were free (buprenorphine, 33% free and 5% conjugated; norbuprenorphine, 21% free and 2% conjugated).

Buprenorphine has a mean elimination half-life from plasma ranging from 31 to 35 hours.

Drug Interactions Studies:

CYP3A4 Inhibitors and Inducers

Subjects receiving SUBUTEX sublingual tablet should be monitored if inhibitors of CYP3A4 such as azole antifungal agents (e.g., ketoconazole), macrolide antibiotics (e.g., erythromycin) or HIV protease inhibitors and may require dose-reduction of one or both agents. The interaction of buprenorphine with all CYP3A4 inducers has not been studied, therefore it is recommended that patients receiving SUBUTEX sublingual tablet be monitored for signs and symptoms of opioid withdrawal if inducers of CYP3A4 (e.g., phenobarbital, carbamazepine, phenytoin, rifampicin) are co-administered [see *Drug Interactions (7)*].

Buprenorphine has been found to be a CYP2D6 and CYP3A4 inhibitor and its major metabolite, norbuprenorphine has been found to be a moderate CYP2D6 inhibitor in in vitro studies employing human liver microsomes. However, the relatively low plasma concentrations of buprenorphine and norbuprenorphine resulting from therapeutic doses are not expected to raise significant drug-drug interaction concerns.

Specific Populations

Hepatic Impairment

In a pharmacokinetic study, the disposition of buprenorphine was determined after administering a 2.0/0.5 mg SUBOXONE (buprenorphine/naloxone) sublingual tablet in subjects with varied degrees of hepatic impairment as indicated by Child-Pugh criteria. The disposition of buprenorphine in patients with hepatic impairment was compared to disposition in subjects with normal hepatic function.

In subjects with mild hepatic impairment, the changes in mean C_{max} , AUC_{0-last} , and half-life values of buprenorphine were not clinically significant. No dose adjustment is needed in patients with mild hepatic impairment.

For subjects with moderate and severe hepatic impairment, mean C_{max} , AUC_{0-last} , and half-life values of buprenorphine were increased (Table 5). [see *Warnings and Precautions (5.12) and Use in Specific Populations (8.6)*].

Table 5. Changes in Buprenorphine Pharmacokinetic Parameters in Subjects with Moderate and Severe Hepatic Impairment

Hepatic Impairment	PK Parameters	Increase in buprenorphine compared to healthy subjects
Moderate	C_{max}	8%
	AUC_{0-last}	64%
	Half-life	35%
Severe	C_{max}	72%
	AUC_{0-last}	181%
	Half-life	57%

HCV infection

In subjects with HCV infection but no sign of hepatic impairment, the changes in the mean C_{max} , AUC_{0-last} , and half-life values of buprenorphine were not clinically significant in comparison to healthy subjects without HCV infection. No dose adjustment is needed in patients with HCV infection.

13 NONCLINICAL TOXICOLOGY

13.1 Carcinogenesis, Mutagenesis, Impairment of Fertility

Carcinogenicity

Carcinogenicity studies of buprenorphine were conducted in Sprague-Dawley rats and CD-1 mice. Buprenorphine was administered in the diet to rats at doses of 0.6, 5.5, and 56 mg/kg/day (estimated exposure was approximately 0.4, 3 and 35 times the recommended human daily sublingual dose of 16 mg on a mg/m² basis) for 27 months. As in the buprenorphine/naloxone carcinogenicity study in rat, statistically significant dose-related increases in Leydig cell tumors occurred. In an 86-week study in CD-1 mice, buprenorphine was not carcinogenic at dietary doses up to 100 mg/kg/day (estimated exposure was approximately 30 times the recommended human daily sublingual dose of 16 mg on a mg/m² basis).

Mutagenicity

Buprenorphine was studied in a series of tests utilizing gene, chromosome, and DNA interactions in both prokaryotic and eukaryotic systems. Results were negative in yeast (*S. cerevisiae*) for recombinant, gene convertant, or forward mutations; negative in *Bacillus subtilis* "rec" assay, negative for clastogenicity in CHO cells, Chinese hamster bone marrow and spermatogonia cells, and negative in the mouse lymphoma L5178Y assay.

Results were equivocal in the Ames test: negative in studies in two laboratories, but positive for frame shift mutation at a high dose (5 mg/plate) in a third study. Results were positive in the Green-Tweets (*E. coli*) survival test, positive in a DNA synthesis inhibition (DSI) test with testicular tissue from mice, for both in vivo and in vitro incorporation of [³H]thymidine, and positive in unscheduled DNA synthesis (UDS) test using testicular cells from mice.

Impairment of Fertility

Reproduction studies of buprenorphine in rats demonstrated no evidence of impaired fertility at daily oral doses up to 80 mg/kg/day (estimated exposure was approximately 50 times the recommended human daily sublingual dose of 16 mg on a mg/m² basis) or up to 5 mg/kg/day IM or SC (estimated exposure was approximately 3 times the recommended human daily sublingual dose of 16 mg on a mg/m² basis).

14 CLINICAL STUDIES

Clinical data on the safety and efficacy of SUBUTEX were derived from studies of buprenorphine sublingual tablet formulations, with and without naloxone, and from studies of sublingual administration of a more bioavailable ethanolic solution of buprenorphine.

SUBUTEX tablets were studied in 1834 patients; SUBOXONE tablets (buprenorphine with naloxone) in 575 patients, and buprenorphine sublingual solutions in 2470 patients. A total of 1270 women received buprenorphine in those clinical trials. Dosing recommendations are based on data from one trial of both tablet formulations and two trials of the ethanolic solution. All trials used buprenorphine in conjunction

with psychosocial counseling as part of a comprehensive addiction treatment program. There were no clinical studies conducted to assess the efficacy of buprenorphine as the only component of treatment.

In a double-blind placebo- and active-controlled study, 326 heroin-addicted subjects were randomly assigned to either SUBOXONE sublingual tablets, 16/4 mg per day; SUBUTEX sublingual tablets, 16 mg per day; or placebo sublingual tablets. For subjects randomized to either active treatment, dosing began with one 8 mg SUBUTEX on Day 1, followed by 16 mg (two 8 mg tablets) of SUBUTEX on Day 2. On Day 3, those randomized to receive SUBOXONE sublingual tablets were switched to the combination tablet. Subjects randomized to placebo received one placebo tablet on Day 1 and two placebo tablets per day thereafter for four weeks. Subjects were seen daily in the clinic (Monday through Friday) for dosing and efficacy assessments. Take-home doses were provided for weekends. Subjects were instructed to hold the medication under the tongue for approximately 5 to 10 minutes until completely dissolved. Subjects received counseling regarding HIV infection and up to one hour of individualized counseling per week. The primary study comparison was to assess the efficacy of SUBOXONE sublingual tablets and SUBUTEX sublingual tablets individually against placebo sublingual tablet. The percentage of thrice-weekly urine samples that were negative for non-study opioids was statistically higher for both SUBOXONE sublingual tablets and SUBUTEX sublingual tablets than for placebo sublingual tablets.

In a double-blind, double-dummy, parallel-group study comparing buprenorphine ethanolic solution to a full agonist active control, 162 subjects were randomized to receive the ethanolic sublingual solution of buprenorphine at 8 mg/day (a dose which is roughly comparable to a dose of 12 mg per day of SUBUTEX sublingual tablets), or two relatively low doses of active control, one of which was low enough to serve as an alternative to placebo, during a 3-10 day induction phase, a 16-week maintenance phase and a 7-week detoxification phase. Buprenorphine was titrated to maintenance dose by Day 3; active control doses were titrated more gradually.

Maintenance dosing continued through Week 17, and then medications were tapered by approximately 20%-30% per week over Weeks 18-24, with placebo dosing for the last two weeks. Subjects received individual and/or group counseling weekly.

Based on retention in treatment and the percentage of thrice-weekly urine samples negative for non-study opioids, buprenorphine was more effective than the low dose of the control, in keeping heroin addicts in treatment and in reducing their use of opioids while in treatment. The effectiveness of buprenorphine, 8mg per day was similar to that of the moderate active control dose, but equivalence was not demonstrated.

In a dose-controlled, double-blind, parallel-group, 16-week study, 731 subjects were randomized to receive one of four doses of buprenorphine ethanolic solution: 1 mg, 4 mg, 8 mg, and 16 mg. Buprenorphine was titrated to maintenance doses over 1-4 days and continued for 16 weeks. Subjects received at least one session of AIDS education and additional counseling ranging from one hour per month to one hour per week, depending on site.

Based on retention in treatment and the percentage of thrice-weekly urine samples negative for non-study opioids, the three highest tested doses were superior to the 1 mg dose. Therefore, this study showed that a range of buprenorphine doses may be effective. The 1 mg dose of buprenorphine sublingual solution can be considered to be somewhat lower than a 2 mg tablet dose. The other doses used in the study encompass a range of tablet doses from approximately 6 mg to approximately 24 mg.

16 HOW SUPPLIED / STORAGE AND HANDLING

SUBUTEX sublingual tablet is an uncoated oval white tablet, imprinted with a sword logo on one side and an alphanumeric imprint identifying the product and strength on the other side, supplied in white HDPE bottles:

- NDC 12496-1278-2 (buprenorphine 2 mg/sublingual tablet; content expressed in terms of free base, equivalent to 2.16 mg buprenorphine hydrochloride USP) - 30 tablets per bottle
- NDC 12496-1310-2 (buprenorphine 8 mg/sublingual tablet; content expressed in terms of free base, equivalent to 8.64 mg buprenorphine hydrochloride USP) - 30 tablets per bottle

Store at 25°C (77°F), excursions permitted to 15°-30°C (59°-86°F). [see USP Controlled Room Temperature].

Patients should be advised to store buprenorphine-containing medications safely and out of sight and reach of children. Destroy any unused medication appropriately. [see *Patient Counseling (17.2)*]

Rx only

17 PATIENT COUNSELING INFORMATION

See FDA-approved patient labeling (Medication Guide)

17.1 Safe Use

Before initiating treatment with SUBUTEX sublingual tablet, explain the points listed below to caregivers and patients. Instruct patients to read the Medication Guide each time SUBUTEX sublingual tablet is dispensed because new information may be available.

- Patients should be warned that it is extremely dangerous to self-administer non-prescribed benzodiazepines or other CNS depressants (including alcohol) while taking SUBUTEX sublingual tablet. Patients prescribed benzodiazepines or other CNS depressants should be cautioned to use them only as directed by their healthcare providers [see *Warnings and Precautions (5.2), Drug Interactions (7)*].
- Patients should be advised that SUBUTEX sublingual tablet contains an opioid that can be a target for people who abuse prescription medications or street drugs. Patients should be cautioned to keep their tablets in a safe place, and to protect them from theft.
- Patients should be instructed to keep SUBUTEX sublingual tablet in a secure place, out of the sight and reach of children. Accidental or deliberate ingestion by a child may cause respiratory depression that can result in death. Patients should be advised that if a child is exposed to SUBUTEX sublingual tablet, medical attention should be sought immediately.
- Inform patients that opioids could cause a rare but potentially life-threatening condition resulting from concomitant administration of serotonergic drugs. Warn patients of the symptoms of serotonin syndrome and to seek medical attention right away if symptoms develop. Instruct patients to inform their healthcare providers if they are taking, or plan to take serotonergic medications [see *Drug Interactions (7)*].
- Inform patients that opioids could cause adrenal insufficiency, a potentially life-threatening condition. Adrenal insufficiency may present with non-specific symptoms and signs such as nausea, vomiting, anorexia, fatigue, weakness, dizziness, and low blood pressure. Advise patients to seek medical attention if they experience a constellation of these symptoms [see *Warnings and Precautions (5.6)*].

- Patients should be advised never to give SUBUTEX sublingual tablet to anyone else, even if he or she has the same signs and symptoms. It may cause harm or death.
- Patients should be advised that selling or giving away this medication is against the law.
- Patients should be cautioned that SUBUTEX sublingual tablet may impair the mental or physical abilities required for the performance of potentially dangerous tasks such as driving or operating hazardous machinery. Caution should be taken especially during drug induction and dose adjustment and until individuals are reasonably certain that buprenorphine therapy does not adversely affect their ability to engage in such activities [see *Warnings and Precautions (5.13)*].
- Patients should be advised not to change the dosage of SUBUTEX sublingual tablet without consulting their healthcare providers.
- Patients should be advised to take SUBUTEX sublingual tablet once a day.
- Patients should be informed that SUBUTEX sublingual tablet can cause drug dependence and that withdrawal signs and symptoms may occur when the medication is discontinued.
- Patients seeking to discontinue treatment with buprenorphine for opioid dependence should be advised to work closely with their healthcare providers on a tapering schedule and should be apprised of the potential to relapse to illicit drug use associated with discontinuation of opioid agonist/partial agonist medication-assisted treatment.
- Patients should be cautioned that, like other opioids, SUBUTEX sublingual tablet may produce orthostatic hypotension in ambulatory individuals [see *Warnings and Precautions (5.14)*].
- Patients should inform their healthcare providers if any other prescription medications, over-the-counter medications, or herbal preparations are prescribed or currently being used [see *Drug Interactions (7)*].
- Advise women that if they are pregnant while being treated with SUBUTEX, the baby may have signs of withdrawal at birth and that withdrawal is treatable [see *Warnings and Precautions (5.5)*, *Use in Specific Populations (8.1)*].
- Patients should be warned that buprenorphine passes into breast milk. Breast-feeding is therefore not advised in mothers treated with buprenorphine products [see *Specific Populations (8.2)*].
- Patients should inform their family members that, in the event of emergency, the treating healthcare providers or emergency room staff should be informed that the patient is physically dependent on an opioid and that the patient is being treated with SUBUTEX sublingual tablet.
- Refer to the Medication Guide for additional information regarding the counseling information.

17.2 Disposal of Unused SUBUTEX Sublingual Tablets

Unused SUBUTEX sublingual tablets should be disposed of as soon as they are no longer needed. Flush unused tablets down the toilet.

Manufactured by:

Reckitt Benckiser Healthcare (UK) Ltd.

Hull, UK, HU8 7DS

Distributed by:

Indivior Inc.

Richmond, VA 23235

MEDICATION GUIDE
SUBUTEX[®] (Sub-u-tex)
(buprenorphine)
Sublingual Tablet (CIII)

IMPORTANT:

Keep SUBUTEX in a secure place away from children. Accidental use by a child is a medical emergency and can result in death. If a child accidentally uses SUBUTEX, get emergency help right away.

Read this Medication Guide that comes with SUBUTEX before you start taking it and each time you get a refill. There may be new information. This Medication Guide does not take the place of talking to your doctor. Talk to your doctor or pharmacist if you have questions about SUBUTEX.

Share the important information in this Medication Guide with members of your household.

What is the most important information I should know about SUBUTEX?

- SUBUTEX can cause serious and life-threatening breathing problems. Call your doctor right away or get emergency help if:
 - You feel faint, dizzy or confused
 - Your breathing gets much slower than is normal for youThese can be signs of an overdose or other serious problems.
- Do not switch from SUBUTEX to other medicines that contain buprenorphine without talking with your doctor. The amount of buprenorphine in a dose of SUBUTEX may not be the same as the amount of buprenorphine in other medicines that contain buprenorphine. Your doctor will prescribe a starting dose of SUBUTEX that may be different than other buprenorphine containing medicines you may have been taking.
- SUBUTEX contains an opioid that can cause physical dependence.
 - Do not stop taking SUBUTEX without talking to your doctor. You could become sick with uncomfortable withdrawal signs and symptoms because your body has become used to this medicine
 - Physical dependence is not the same as drug addiction
 - SUBUTEX is not for occasional or “as needed” use
- An overdose, and even death, can happen if you take benzodiazepines, sedatives, tranquilizers, antidepressants, or alcohol while using SUBUTEX. Ask your doctor what you should do if you are taking one of these.
- Call a doctor or get emergency help right away if you:
 - Feel sleepy and uncoordinated

- Have blurred vision
- Have slurred speech
- Cannot think well or clearly
- Have slowed reflexes and breathing
- Do not inject (“shoot-up”) SUBUTEX.
 - Injecting SUBUTEX may cause life-threatening infections and other serious health problems.
 - Injecting SUBUTEX may cause serious withdrawal symptoms such as pain, cramps, vomiting, diarrhea, anxiety, sleep problems, and cravings.
- In an emergency, have family members tell the emergency department staff that you are physically dependent on an opioid and are being treated with SUBUTEX.

What is SUBUTEX?

- SUBUTEX is a prescription medicine used to begin treatment in adults who are addicted to (dependent on) opioid drugs (either prescription or illegal drugs), as part of a complete treatment program that also includes counseling and behavioral therapy.
- SUBUTEX is most often used for the first 1 or 2 days to help you start with treatment.

SUBUTEX is a controlled substance (CIII) because it contains buprenorphine, which can be a target for people who abuse prescription medicines or street drugs. Keep your SUBUTEX in a safe place to protect it from theft. Never give your SUBUTEX to anyone else; it can cause death or harm them. Selling or giving away this medicine is against the law.

- It is not known if SUBUTEX is safe or effective in children.

Who should not take SUBUTEX?

Do not take SUBUTEX if you are allergic to buprenorphine.

What should I tell my doctor before taking SUBUTEX?

SUBUTEX may not be right for you. Before taking SUBUTEX, tell your doctor if you:

- Have liver or kidney problems
- Have trouble breathing or lung problems
- Have an enlarged prostate gland (men)
- Have a head injury or brain problem
- Have problems urinating
- Have a curve in your spine that affects your breathing
- Have gallbladder problems
- Have adrenal gland problems

- Have Addison's disease
- Have low thyroid (hypothyroidism)
- Have a history of alcoholism
- Have mental problems such as hallucinations (seeing or hearing things that are not there)
- Have any other medical condition
- Are pregnant or plan to become pregnant. If you take SUBUTEX while pregnant, your baby may have symptoms of opioid withdrawal or respiratory depression at birth. Talk to your doctor if you are pregnant or plan to become pregnant.
- Are breastfeeding or plan to breastfeed. SUBUTEX can pass into your milk and may harm your baby. Talk to your doctor about the best way to feed your baby if you take SUBUTEX. Monitor your baby for increased sleepiness and breathing problems.

Tell your doctor about all the medicines you take, including prescription and over-the-counter medicines, vitamins, and herbal supplements. SUBUTEX may affect the way other medicines work, and other medicines may affect how SUBUTEX works. Some medicines may cause serious or life-threatening medical problems when taken with SUBUTEX.

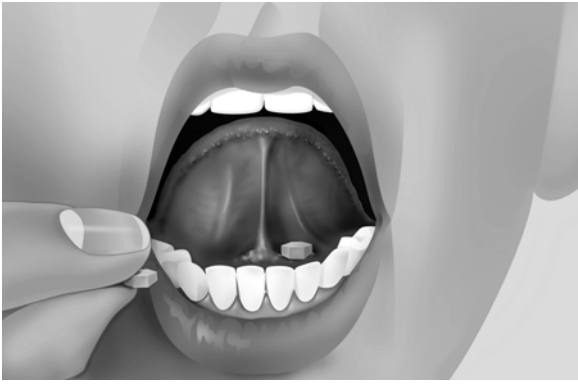
Sometimes the doses of certain medicines and SUBUTEX may need to be changed if used together. Do not take any medicine while using SUBUTEX until you have talked with your doctor. Your doctor will tell you if it is safe to take other medicines while you are taking SUBUTEX.

Be especially careful about taking other medicines that may make you sleepy, such as pain medicines, tranquilizers, sleeping pills, anxiety medicines or antihistamines.

Know the medicines you take. Keep a list of them to show your doctor and pharmacist each time you get a new medicine.

How should I take SUBUTEX?

- Always take SUBUTEX exactly as your doctor tells you. Your doctor may change your dose after seeing how it affects you. Do not change your dose unless your doctor tells you to change it.
- Do not take SUBUTEX more often than prescribed by your doctor.
- If you are prescribed a dose of 2 or more SUBUTEX tablets at the same time:
 - Ask your doctor for instructions on the right way to take SUBUTEX tablets
 - Follow the same instructions every time you take a dose of SUBUTEX tablet
- Put the tablets under your tongue. Let them dissolve completely.



- While SUBUTEX is dissolving, do not chew or swallow the tablet because the medicine will not work as well.
- Talking while the tablet is dissolving can affect how well the medicine in SUBUTEX is absorbed.
- If you miss a dose of SUBUTEX, take your medicine when you remember. If it is almost time for your next dose, skip the missed dose and take the next dose at your regular time. Do not take 2 doses at the same time unless your doctor tells you to. If you are not sure about your dosing, call your doctor.
- Do not stop taking SUBUTEX suddenly. You could become sick and have withdrawal symptoms because your body has become used to the medicine. Physical dependence is not the same as drug addiction. Your doctor can tell you more about the differences between physical dependence and drug addiction. To have fewer withdrawal symptoms, ask your doctor how to stop using SUBUTEX the right way.
- **If you take too much SUBUTEX or overdose, call Poison Control or get emergency medical help right away.**

What should I avoid while taking SUBUTEX?

- **Do not drive, operate heavy machinery, or perform any other dangerous activities until you know how this medication affects you.** Buprenorphine can cause drowsiness and slow reaction times. This may happen more often in the first few weeks of treatment when your dose is being changed, but can also happen if you drink alcohol or take other sedative drugs when you take SUBUTEX.
- **You should not drink alcohol** while using SUBUTEX, as this can lead to loss of consciousness or death.

What are the possible side effects of SUBUTEX?

SUBUTEX can cause serious side effects including:

- **See “What is the most important information I should know about SUBUTEX?”**
- **Respiratory problems.** You have a higher risk of death and coma if you take SUBUTEX with other medicines, such as benzodiazepines.
- **Sleepiness, dizziness, and problems with coordination**

- **Dependency or abuse**
- **Liver problems.** Call your doctor right away if you notice any of these signs of liver problems: Your skin or the white part of your eyes turning yellow (jaundice), urine turning dark, stools turning light in color, you have less of an appetite, or you have stomach (abdominal) pain or nausea. Your doctor should do tests before you start taking and while you take SUBUTEX.
- **Allergic reaction.** You may have a rash, hives, swelling of the face, wheezing, or loss of blood pressure and consciousness. Call a doctor or get emergency help right away.
- **Opioid withdrawal.** This can include: shaking, sweating more than normal, feeling hot or cold more than normal, runny nose, watery eyes, goose bumps, diarrhea, vomiting and muscle aches. Tell your doctor if you develop any of these symptoms.
- **Decrease in blood pressure.** You may feel dizzy if you get up too fast from sitting or lying down.

Common side effects of SUBUTEX include:

- Nausea
- Vomiting
- Drug withdrawal syndrome
- Headache
- Sweating
- Numb mouth
- Constipation
- Swollen and/or painful tongue
- The inside of your mouth is more red than normal
- Intoxication (feeling lightheaded or drunk)
- Disturbance in attention
- Irregular heart beat (palpitations)
- Decrease in sleep (insomnia)
- Blurred vision
- Back pain
- Fainting
- Dizziness
- Sleepiness

Tell your doctor about any side effect that bothers you or that does not go away.

These are not all the possible side effects of SUBUTEX. For more information, ask your doctor or pharmacist.

Call your doctor for medical advice about side effects. You may report side effects to FDA at 1-800-FDA-1088.

How should I store SUBUTEX?

- Store SUBUTEX at room temperature between 68°F and 77°F (20°C to 25°C).
- **Keep SUBUTEX in a safe place, out of the sight and reach of children.**

How should I dispose of unused SUBUTEX?

- Dispose of unused SUBUTEX as soon as you no longer need them.
- Unused tablets should be flushed down the toilet.

If you need help with disposal of SUBOXONE, call 1-877-782-6966.

General information about the safe and effective use of SUBUTEX

Medicines are sometimes prescribed for purposes other than those listed in a Medication Guide. Do not take SUBUTEX for a condition for which it was not prescribed. Do not give SUBUTEX to other people, even if they have the same symptoms you have. It may harm them and it is against the law.

This Medication Guide summarizes the most important information about SUBUTEX. If you would like more information, talk to your doctor or pharmacist. You can ask your doctor or pharmacist for information that is written for healthcare professionals.

For more information call 1-877-782-6966.

What are the ingredients in SUBUTEX sublingual tablets?

Active Ingredient: buprenorphine

Inactive Ingredients: lactose, mannitol, cornstarch, povidone K30, citric acid, sodium citrate, and magnesium stearate

Manufactured for Indivior Inc.

Richmond, VA 23235

This Medication Guide has been approved by the U.S. Food and Drug Administration.

SUBUTEX[®] is a registered trademark of Indivior UK Limited

Revised: December 2016

Copyright © 2016 Indivior Inc.

Printed in USA