

## HIGHLIGHTS OF PRESCRIBING INFORMATION

These highlights do not include all the information needed to use AROMASIN safely and effectively. See full prescribing information for AROMASIN.

AROMASIN® (exemestane) tablets, oral  
Initial U.S. Approval: 1999

### RECENT MAJOR CHANGES

Dosage and Administration, Dose Modifications (2.2) 05/2014  
Warnings and Precautions, Reductions in BMD (5.3) 05/2014

### INDICATIONS AND USAGE

AROMASIN is an aromatase inhibitor indicated for:

- adjuvant treatment of postmenopausal women with estrogen-receptor positive early breast cancer who have received two to three years of tamoxifen and are switched to AROMASIN for completion of a total of five consecutive years of adjuvant hormonal therapy (14.1).
- treatment of advanced breast cancer in postmenopausal women whose disease has progressed following tamoxifen therapy (14.2).

### DOSAGE AND ADMINISTRATION

One 25 mg tablet once daily after a meal (2.1).

### DOSAGE FORMS AND STRENGTHS

Tablets: 25 mg (3).

### CONTRAINDICATIONS

- Patients with a known hypersensitivity to the drug or to any of the excipients (4.1).
- Women of premenopausal endocrine status, including pregnant women (4.2).

### WARNINGS AND PRECAUTIONS

- Reductions in bone mineral density (BMD) over time are seen with exemestane use (5.3).
- Routine assessment of 25-hydroxy vitamin D levels prior to the start of aromatase inhibitor treatment should be performed (5.4).

### ADVERSE REACTIONS

- Early breast cancer: Adverse events occurring in  $\geq 10\%$  of patients in any treatment group (AROMASIN vs. tamoxifen) were hot flushes (21.2% vs. 19.9%), fatigue (16.1% vs. 14.7%), arthralgia (14.6% vs. 8.6%), headache (13.1% vs. 10.8%), insomnia (12.4% vs. 8.9%), and increased sweating (11.8% vs. 10.4%). Discontinuation rates due to AEs were similar between AROMASIN and tamoxifen (6.3% vs. 5.1%). Incidences of cardiac ischemic events (myocardial infarction, angina, and myocardial ischemia) were AROMASIN 1.6%, tamoxifen 0.6%. Incidence of cardiac failure: AROMASIN 0.4%, tamoxifen 0.3% (6, 6.1).
- Advanced breast cancer: Most common adverse events were mild to moderate and included hot flushes (13% vs. 5%), nausea (9% vs. 5%), fatigue (8% vs. 10%), increased sweating (4% vs. 8%), and increased appetite (3% vs. 6%) for AROMASIN and megestrol acetate, respectively (6, 6.1).

To report SUSPECTED ADVERSE REACTIONS, contact Pfizer Inc at 1-800-438-1985 or FDA at 1-800-FDA-1088 or [www.fda.gov/medwatch](http://www.fda.gov/medwatch).

### DRUG INTERACTIONS

- Strong CYP 3A4 inducers: Concomitant use of strong CYP 3A4 inducers decreases exemestane exposure. Increase the Aromasin dose to 50 mg (2.2, 7).

See 17 for PATIENT COUNSELING INFORMATION and FDA – approved patient labeling

Revised: 05/2014

## FULL PRESCRIBING INFORMATION: CONTENTS\*

### 1 INDICATIONS AND USAGE

- 1.1 Adjuvant Treatment of Postmenopausal Women
- 1.2 Advanced Breast Cancer in Postmenopausal Women

### 2 DOSAGE AND ADMINISTRATION

- 2.1 Recommended Dose
- 2.2 Dose Modifications

### 3 DOSAGE FORMS AND STRENGTHS

### 4 CONTRAINDICATIONS

- 4.1 Hypersensitivity
- 4.2 Pregnancy

### 5 WARNINGS AND PRECAUTIONS

- 5.1 Administration with Estrogen-Containing Agents
- 5.2 Laboratory Tests
- 5.3 Reductions in Bone Mineral Density (BMD)
- 5.4 Vitamin D Assessment

### 6 ADVERSE REACTIONS

- 6.1 Clinical Trial Experience
- 6.2 Post-Marketing Experiences

### 7 DRUG INTERACTIONS

### 8 USE IN SPECIFIC POPULATIONS

- 8.1 Pregnancy
- 8.3 Nursing Mothers
- 8.4 Pediatric Use
- 8.6 Hepatic Impairment
- 8.7 Renal Impairment

### 10 OVERDOSAGE

### 11 DESCRIPTION

### 12 CLINICAL PHARMACOLOGY

- 12.1 Mechanism of Action
- 12.2 Pharmacodynamics
- 12.3 Pharmacokinetics

### 13 NONCLINICAL TOXICOLOGY

- 13.1 Carcinogenesis, Mutagenesis, Impairment of Fertility

### 14 CLINICAL STUDIES

- 14.1 Adjuvant Treatment in Early Breast Cancer
- 14.2 Treatment of Advanced Breast Cancer

### 16 HOW SUPPLIED/STORAGE AND HANDLING

### 17 PATIENT COUNSELING INFORMATION

- 17.1 Premenopausal Women
- 17.2 Other Estrogen-Containing Agents
- 17.3 Bone Effects

\*Sections or subsections omitted from the full prescribing information are not listed.

**FULL PRESCRIBING INFORMATION\*:**

**1 INDICATIONS AND USAGE**

**1.1 Adjuvant Treatment of Postmenopausal Women**

AROMASIN is indicated for adjuvant treatment of postmenopausal women with estrogen-receptor positive early breast cancer who have received two to three years of tamoxifen and are switched to AROMASIN for completion of a total of five consecutive years of adjuvant hormonal therapy [see *Clinical Studies (14.1)*].

**1.2 Advanced Breast Cancer in Postmenopausal Women**

AROMASIN is indicated for the treatment of advanced breast cancer in postmenopausal women whose disease has progressed following tamoxifen therapy [see *Clinical Studies (14.2)*].

**2 DOSAGE AND ADMINISTRATION**

**2.1 Recommended Dose**

The recommended dose of AROMASIN in early and advanced breast cancer is one 25 mg tablet once daily after a meal.

- adjuvant treatment of postmenopausal women with estrogen-receptor positive early breast cancer who have received two to three years of tamoxifen and are switched to AROMASIN for completion of a total of five consecutive years of adjuvant hormonal therapy.
- the treatment of advanced breast cancer in postmenopausal women whose disease has progressed following tamoxifen therapy.

**2.2 Dose Modifications**

Concomitant use of strong CYP 3A4 inducers decreases exemestane exposure. For patients receiving AROMASIN with a strong CYP 3A4 inducer such as rifampicin or phenytoin, the recommended dose of AROMASIN is 50 mg once daily after a meal [see *Drug Interactions (7) and Clinical Pharmacology (12.3)*].

**3 DOSAGE FORMS AND STRENGTHS**

AROMASIN Tablets are round, biconvex, and off-white to slightly gray. Each tablet contains 25 mg of exemestane. The tablets are printed on one side with the number “7663” in black.

**4 CONTRAINDICATIONS**

**4.1 Hypersensitivity**

AROMASIN Tablets are contraindicated in patients with a known hypersensitivity to the drug or to any of the excipients.

**4.2 Pregnancy**

AROMASIN may cause fetal harm when administered to a pregnant woman. Based on its mechanism of action AROMASIN is expected to result in adverse reproductive effects. In non-clinical studies in rats and rabbits, exemestane was embryotoxic, fetotoxic, and abortifacient.

AROMASIN is contraindicated in women who are or may become pregnant. If this drug is used during pregnancy, or if the patient becomes pregnant while taking this drug, the patient should be apprised of the potential hazard to the fetus.

AROMASIN Tablets should not be administered to premenopausal women [see *Use in Specific Populations (8.1)*].

**5 WARNINGS AND PRECAUTIONS**

**5.1 Administration with Estrogen-Containing Agents**

AROMASIN should not be coadministered with estrogen-containing agents as these could interfere with its pharmacologic action.

**5.2 Laboratory Tests**

In patients with early breast cancer, the incidence of hematological abnormalities of Common Toxicity Criteria (CTC) grade  $\geq 1$  was lower in the exemestane treatment group, compared with tamoxifen. Incidence of CTC grade 3 or 4 abnormalities was low (approximately 0.1%) in both treatment groups. Approximately 20% of patients receiving exemestane in clinical studies in advanced breast cancer experienced CTC grade 3 or 4 lymphocytopenia. Of these patients, 89% had a pre-existing lower grade lymphopenia. Forty percent of patients either recovered or improved to a lesser severity while on treatment. Patients did not have a significant increase in viral infections, and no opportunistic infections were observed. Elevations of serum levels of AST, ALT, alkaline phosphatase, and gamma glutamyl transferase  $>5$  times the upper value of the normal range (i.e.,  $\geq$ CTC grade 3) have been rarely reported in patients treated for advanced breast cancer but appear mostly attributable to the underlying presence of liver and/or bone metastases. In the comparative study in advanced breast cancer patients, CTC grade 3 or 4 elevation of gamma glutamyl transferase without documented evidence of liver metastasis was reported in 2.7% of patients treated with AROMASIN and in 1.8% of patients treated with megestrol acetate.

In patients with early breast cancer, elevations in bilirubin, alkaline phosphatase, and creatinine were more common in those receiving exemestane than either tamoxifen or placebo. Treatment-emergent bilirubin elevations (any CTC grade) occurred in 5.3% of exemestane patients and 0.8% of tamoxifen patients on the Intergroup Exemestane Study (IES), and in 6.9% of exemestane treated patients vs. 0% of placebo treated patients in the 027

study. CTC grade 3–4 increases in bilirubin occurred in 0.9% of exemestane treated patients compared to 0.1% of tamoxifen treated patients. Alkaline phosphatase elevations of any CTC grade occurred in 15.0% of exemestane treated patients on the IES compared to 2.6% of tamoxifen treated patients, and in 13.7% of exemestane treated patients compared to 6.9% of placebo treated patients in study 027. Creatinine elevations occurred in 5.8% of exemestane treated patients and 4.3% of tamoxifen treated patients on the IES and in 5.5% of exemestane treated patients and 0% of placebo treated patients in study 027.

### 5.3 Reductions in Bone Mineral Density (BMD)

Reductions in bone mineral density (BMD) over time are seen with exemestane use. Table 1 describes changes in BMD from baseline to 24 months in patients receiving exemestane compared to patients receiving tamoxifen (IES) or placebo (027). Concomitant use of bisphosphonates, vitamin D supplementation, and calcium was not allowed.

**Table 1. Percent Change in BMD from Baseline to 24 months, Exemestane vs. Control<sup>1</sup>**

| BMD              | IES                |                                | 027                |                              |
|------------------|--------------------|--------------------------------|--------------------|------------------------------|
|                  | Exemestane<br>N=29 | Tamoxifen <sup>1</sup><br>N=38 | Exemestane<br>N=59 | Placebo <sup>1</sup><br>N=65 |
| Lumbar spine (%) | -3.14              | -0.18                          | -3.51              | -2.35                        |
| Femoral neck (%) | -4.15              | -0.33                          | -4.57              | -2.59                        |

During adjuvant treatment with exemestane, women with osteoporosis or at risk of osteoporosis should have their bone mineral density formally assessed by bone densitometry at the commencement of treatment. Monitor patients for bone mineral density loss and treat as appropriate.

### 5.4 Vitamin D Assessment

Routine assessment of 25-hydroxy vitamin D levels prior to the start of aromatase inhibitor treatment should be performed, due to the high prevalence of vitamin D deficiency in women with early breast cancer (EBC). Women with vitamin D deficiency should receive supplementation with vitamin D.

## 6 ADVERSE REACTIONS

AROMASIN was generally well tolerated and adverse events were usually mild to moderate.

In the adjuvant treatment of early breast cancer, adverse events occurring in  $\geq 10\%$  of patients in any treatment group (AROMASIN vs. tamoxifen) were hot flushes (21.2% vs. 19.9%), fatigue (16.1% vs. 14.7%), arthralgia (14.6% vs. 8.6%), headache (13.1% vs. 10.8%), insomnia (12.4% vs. 8.9%), and increased sweating (11.8% vs. 10.4%). Discontinuation rates due to AEs were similar between AROMASIN and tamoxifen (6.3% vs. 5.1%). Incidences of cardiac ischemic events (myocardial infarction, angina, and myocardial ischemia) were AROMASIN 1.6%, tamoxifen 0.6%. Incidence of cardiac failure: AROMASIN 0.4%, tamoxifen 0.3%.

In the treatment of advanced breast cancer, the most common adverse events were mild to moderate and included hot flushes (13% vs. 5%), nausea (9% vs. 5%), fatigue (8% vs. 10%), increased sweating (4% vs. 8%), and increased appetite (3% vs. 6%) for AROMASIN and megestrol acetate, respectively.

### 6.1 Clinical Trial Experience

Because clinical trials are conducted under widely varying conditions, adverse reaction rates observed in the clinical trials of a drug cannot be directly compared to rates in the clinical trials of another drug and may not reflect the rates observed in clinical practice.

#### Adjuvant Therapy

The data described below reflect exposure to AROMASIN in 2325 postmenopausal women with early breast cancer. AROMASIN tolerability in postmenopausal women with early breast cancer was evaluated in two well-controlled trials: the IES study (14.1) and the 027 study (a randomized, placebo-controlled, double-blind, parallel group study specifically designed to assess the effects of exemestane on bone metabolism, hormones, lipids, and coagulation factors over 2 years of treatment).

The median duration of adjuvant treatment was 27.4 months and 27.3 months for patients receiving AROMASIN or tamoxifen, respectively, within the IES study and 23.9 months for patients receiving AROMASIN or placebo within the 027 study. Median duration of observation after randomization for AROMASIN was 34.5 months and for tamoxifen was 34.6 months. Median duration of observation was 30 months for both groups in the 027 study.

Certain adverse events, which were expected based on the known pharmacological properties and side effect profiles of test drugs, were actively sought through a positive checklist. Signs and symptoms were graded for severity using CTC in both studies. Within the IES study, the presence of some illnesses/conditions was monitored through a positive checklist without assessment of severity. These included myocardial infarction, other cardiovascular disorders, gynecological disorders, osteoporosis, osteoporotic fractures, other primary cancer, and hospitalizations.

AROMASIN was generally well tolerated and adverse events were usually mild to moderate. Within the IES study, discontinuations due to adverse events occurred in 6.3% and 5.1% of patients receiving AROMASIN and tamoxifen, respectively, and in 12.3% and 4.1% of patients receiving exemestane or placebo respectively within study 027.

Deaths due to any cause were reported for 1.3% of the exemestane treated patients and 1.4% of the tamoxifen treated patients within the IES study. There were 6 deaths due to stroke on the exemestane arm compared to 2 on tamoxifen. There were 5 deaths due to cardiac failure on the exemestane arm compared to 2 on tamoxifen.

The incidence of cardiac ischemic events (myocardial infarction, angina, and myocardial ischemia) was 1.6% in exemestane treated patients and 0.6% in tamoxifen treated patients in the IES study. Cardiac failure was observed in 0.4% of exemestane treated patients and 0.3% of tamoxifen treated patients.

Treatment-emergent adverse events and illnesses including all causalities and occurring with an incidence of  $\geq 5\%$  in either treatment group of the IES study during or within one month of the end of treatment are shown in Table 2.

**Table 2. Incidence (%) of Adverse Events of all Grades<sup>1</sup> and Illnesses Occurring in ( $\geq 5\%$ ) of Patients in Any Treatment Group in Study IES in Postmenopausal Women with Early Breast Cancer**

| Body system and Adverse Event by MedDRA dictionary | % of patients                       |   |
|--|-------------------------------------|---|
|  | AROMASIN<br>25 mg daily<br>(N=2252) | Tamoxifen<br>20 mg daily <sup>2</sup><br>(N=2280) |
| <b>Eye</b>   |                                     |   |
| Visual disturbances <sup>3</sup>                   | 5.0                                 | 3.8   |
| <b>Gastrointestinal</b>                            |                                     |   |
| Nausea <sup>3</sup>                                | 8.5                                 | 8.7   |
| <b>General Disorders</b>                           |                                     |   |
| Fatigue <sup>3</sup>                               | 16.1                                | 14.7  |
| <b>Musculoskeletal</b>                             |                                     |   |
| Arthralgia   | 14.6                                | 8.6   |
| Pain in limb                                       | 9.0                                 | 6.4   |
| Back pain  | 8.6                                 | 7.2   |
| Osteoarthritis                                     | 5.9                                 | 4.5   |
| <b>Nervous System</b>                              |                                     |   |
| Headache <sup>3</sup>                              | 13.1                                | 10.8  |
| Dizziness <sup>3</sup>                             | 9.7                                 | 8.4   |
| <b>Psychiatric</b>                                 |                                     |   |
| Insomnia <sup>3</sup>                              | 12.4                                | 8.9   |
| Depression   | 6.2                                 | 5.6   |
| <b>Skin &amp; Subcutaneous Tissue</b>              |                                     |   |
| Increased sweating <sup>3</sup>                    | 11.8                                | 10.4  |
| <b>Vascular</b>                                    |                                     |   |
| Hot flushes <sup>3</sup>                           | 21.2                                | 19.9  |
| Hypertension                                       | 9.8                                 | 8.4   |

<sup>1</sup> Graded according to Common Toxicity Criteria;

<sup>2</sup> 75 patients received tamoxifen 30 mg daily;

<sup>3</sup> Event actively sought.

In the IES study, as compared to tamoxifen, AROMASIN was associated with a higher incidence of events in musculoskeletal disorders and in nervous system disorders, including the following events occurring with frequency lower than 5% (osteoporosis [4.6% vs. 2.8%], osteochondrosis and trigger finger [0.3% vs. 0 for both events], paresthesia [2.6% vs. 0.9%], carpal tunnel syndrome [2.4% vs. 0.2%], and neuropathy [0.6% vs. 0.1%]). Diarrhea was also more frequent in the exemestane group (4.2% vs. 2.2%). Clinical fractures were reported in 94 patients receiving exemestane (4.2%) and 71 patients receiving tamoxifen (3.1%). After a median duration of therapy of about 30 months and a median follow-up of about 52 months, gastric ulcer was observed at a slightly higher frequency in the AROMASIN group compared to tamoxifen (0.7% vs. <0.1%). The majority of patients on AROMASIN with gastric ulcer received concomitant treatment with non-steroidal anti-inflammatory agents and/or had a prior history.

Tamoxifen was associated with a higher incidence of muscle cramps [3.1% vs. 1.5%], thromboembolism [2.0% vs. 0.9%], endometrial hyperplasia [1.7% vs. 0.6%], and uterine polyps [2.4% vs. 0.4%].

Common adverse events occurring in study 027 are described in Table 3.

**Table 3. Incidence of Selected Treatment-Emergent Adverse Events of all CTC Grades\* Occurring in  $\geq 5\%$  of Patients in Either Arm in Study 027**

| Adverse Event | Exemestane<br>N=73<br>(% incidence) | Placebo<br>N=73<br>(% incidence) |
|---------------|-------------------------------------|----------------------------------|
|               |                                     |                                  |

| Adverse Event      | Exemestane<br>N=73<br>(% incidence) | Placebo<br>N=73<br>(% incidence) |
|--------------------|-------------------------------------|----------------------------------|
| Hot flushes        | 32.9                                | 24.7                             |
| Arthralgia         | 28.8                                | 28.8                             |
| Increased sweating | 17.8                                | 20.6                             |
| Alopecia           | 15.1                                | 4.1                              |
| Hypertension       | 15.1                                | 6.9                              |
| Insomnia           | 13.7                                | 15.1                             |
| Nausea             | 12.3                                | 16.4                             |
| Fatigue            | 11.0                                | 19.2                             |
| Abdominal pain     | 11.0                                | 13.7                             |
| Depression         | 9.6                                 | 6.9                              |
| Diarrhea           | 9.6                                 | 1.4                              |
| Dizziness          | 9.6                                 | 9.6                              |
| Dermatitis         | 8.2                                 | 1.4                              |
| Headache           | 6.9                                 | 4.1                              |
| Myalgia            | 5.5                                 | 4.1                              |
| Edema              | 5.5                                 | 6.9                              |
| Anxiety            | 4.1                                 | 5.5                              |

\* Most events were CTC grade 1–2

#### **Treatment of Advanced Breast Cancer**

A total of 1058 patients were treated with exemestane 25 mg once daily in the clinical trials program. Only one death was considered possibly related to treatment with exemestane; an 80-year-old woman with known coronary artery disease had a myocardial infarction with multiple organ failure after 9 weeks on study treatment. In the clinical trials program, only 3% of the patients discontinued treatment with exemestane because of adverse events, mainly within the first 10 weeks of treatment; late discontinuations because of adverse events were uncommon (0.3%).

In the comparative study, adverse reactions were assessed for 358 patients treated with AROMASIN and 400 patients treated with megestrol acetate. Fewer patients receiving AROMASIN discontinued treatment because of adverse events than those treated with megestrol acetate (2% vs. 5%). Adverse events that were considered drug related or of indeterminate cause included hot flashes (13% vs. 5%), nausea (9% vs. 5%), fatigue (8% vs. 10%), increased sweating (4% vs. 8%), and increased appetite (3% vs. 6%) for AROMASIN and megestrol acetate, respectively. The proportion of patients experiencing an excessive weight gain (>10% of their baseline weight) was significantly higher with megestrol acetate than with AROMASIN (17% vs. 8%). Table 4 shows the adverse events of all CTC grades, regardless of causality, reported in 5% or greater of patients in the study treated either with AROMASIN or megestrol acetate.

**Table 4. Incidence (%) of Adverse Events of all Grades\* and Causes Occurring in ≥5% of Advanced Breast Cancer Patients In Each Treatment Arm in the Comparative Study**

| Body system and Adverse Event by WHO ART dictionary | AROMASIN<br>25 mg<br>once daily<br>(N=358) | Megestrol Acetate<br>40 mg QID (N=400) |
|---|--|--|
| <b>Autonomic Nervous</b>                            |  |  |
| Increased sweating                                  | 6  | 9                                      |
| <b>Body as a Whole</b>                              |  |  |
| Fatigue   | 22   | 29                                     |
| Hot flashes   | 13   | 6                                      |
| Pain  | 13   | 13                                     |
| Influenza-like symptoms                             | 6  | 5                                      |
| Edema (includes edema, peripheral edema, leg edema) | 7  | 6                                      |
| <b>Cardiovascular</b>                               |  |  |
| Hypertension  | 5  | 6                                      |
| <b>Nervous</b>                                      |  |  |
| Depression  | 13   | 9                                      |
| Insomnia  | 11   | 9                                      |
| Anxiety   | 10   | 11                                     |
| Dizziness   | 8  | 6                                      |
| Headache  | 8  | 7                                      |
| <b>Gastrointestinal</b>                             |  |  |
| Nausea  | 18   | 12                                     |
| Vomiting  | 7  | 4                                      |
| Abdominal pain                                      | 6  | 11                                     |
| Anorexia  | 6  | 5                                      |
| Constipation  | 5  | 8                                      |
| Diarrhea  | 4  | 5                                      |
| Increased appetite                                  | 3  | 6                                      |
| <b>Respiratory</b>                                  |  |  |
| Dyspnea   | 10   | 15                                     |
| Coughing  | 6  | 7                                      |

\* Graded according to Common Toxicity Criteria

Less frequent adverse events of any cause (from 2% to 5%) reported in the comparative study for patients receiving AROMASIN 25 mg once daily were fever, generalized weakness, paresthesia, pathological fracture, bronchitis, sinusitis, rash, itching, urinary tract infection, and lymphedema.

Additional adverse events of any cause observed in the overall clinical trials program (N = 1058) in 5% or greater of patients treated with exemestane 25 mg once daily but not in the comparative study included pain at tumor sites (8%), asthenia (6%), and fever (5%). Adverse events of any cause reported in 2% to 5% of all patients treated with exemestane 25 mg in the overall clinical trials program but not in the comparative study included chest pain, hypoesthesia, confusion, dyspepsia, arthralgia, back pain, skeletal pain, infection, upper respiratory tract infection, pharyngitis, rhinitis, and alopecia.

### 6.2 Post-Marketing Experience

The following adverse reactions have been identified during post approval use of AROMASIN. Because reactions are reported voluntarily from a population of uncertain size, it is not always possible to reliably estimate their frequency or establish a causal relationship to drug exposure.

*Immune system disorders*- hypersensitivity

*Hepatobiliary disorders*- hepatitis including cholestatic hepatitis

*Nervous system disorders*- paresthesia

*Skin and subcutaneous tissue disorders*- acute generalized exanthematous pustulosis, urticaria, pruritus

## 7 DRUG INTERACTIONS

Co-medications that induce CYP 3A4 (e.g., rifampicin, phenytoin, carbamazepine, phenobarbital, or St. John's wort) may significantly decrease exposure to exemestane. Dose modification is recommended for patients who are also receiving a strong CYP 3A4 inducer [see *Dosage and Administration (2.2) and Clinical Pharmacology (12.3)*].

## 8 USE IN SPECIFIC POPULATIONS

### 8.1 Pregnancy

Pregnancy Category X. See “Contraindications” section.

AROMASIN can cause fetal harm when administered to a pregnant woman and the clinical benefit to premenopausal women with breast cancer has not been demonstrated. AROMASIN is contraindicated in women who are or may become pregnant. There are no adequate and well-controlled studies of AROMASIN in pregnant women.

In non-clinical studies in rats and rabbits, exemestane was embryotoxic, fetotoxic, and abortifacient. Radioactivity related to <sup>14</sup>C-exemestane crossed the placenta of rats following oral administration of 1 mg/kg exemestane. The concentration of exemestane and its metabolites was approximately equivalent in maternal and fetal blood. When rats were administered exemestane from 14 days prior to mating until either days 15 or 20 of gestation, and resuming for the 21 days of lactation, an increase in placental weight was seen at 4 mg/kg/day (approximately 1.5 times the recommended human daily dose on a mg/m<sup>2</sup> basis). Prolonged gestation and abnormal or difficult labor was observed at doses equal to or greater than 20 mg/kg/day. Increased resorption, reduced number of live fetuses, decreased fetal weight, and retarded ossification were also observed at these doses. No malformations were noted when exemestane was administered to pregnant rats during the organogenesis period at doses up to 810 mg/kg/day (approximately 320 times the recommended human dose on a mg/m<sup>2</sup> basis). Daily doses of exemestane, given to rabbits during organogenesis, caused a decrease in placental weight at 90 mg/kg/day (approximately 70 times the recommended human daily dose on a mg/m<sup>2</sup> basis). Abortions, an increase in resorptions, and a reduction in fetal body weight were seen at 270 mg/kg/day. There was no increase in the incidence of malformations in rabbits at doses up to 270 mg/kg/day (approximately 210 times the recommended human dose on a mg/m<sup>2</sup> basis).

If this drug is used during pregnancy, or if the patient becomes pregnant while receiving this drug, the patient should be apprised of the potential hazard to the fetus and the potential risk for pregnancy loss.

### 8.3 Nursing Mothers

AROMASIN is only indicated in postmenopausal women. However, radioactivity related to exemestane appeared in rat milk within 15 minutes of oral administration of radiolabeled exemestane. Concentrations of exemestane and its metabolites were approximately equivalent in the milk and plasma of rats for 24 hours after a single oral dose of 1 mg/kg <sup>14</sup>C-exemestane. It is not known whether exemestane is excreted in human milk. Because many drugs are excreted in human milk, and because of the potential for serious adverse reaction in nursing infants from AROMASIN, a decision should be made whether to discontinue the drug, taking into account the importance of the drug to the mother.

### 8.4 Pediatric Use

Safety and effectiveness in pediatric patients have not been established.

### 8.6 Hepatic Impairment

The AUC of exemestane was increased in subjects with moderate or severe hepatic impairment (Childs-Pugh B or C) [see *Clinical Pharmacology* (12.3)]. However, based on experience with exemestane at repeated doses up to 200 mg daily that demonstrated a moderate increase in non life-threatening adverse events, dosage adjustment does not appear to be necessary.

### 8.7 Renal Impairment

The AUC of exemestane was increased in subjects with moderate or severe renal impairment (creatinine clearance <35 mL/min/1.73 m<sup>2</sup>) [see *Clinical Pharmacology* (12.3)]. However, based on experience with exemestane at repeated doses up to 200 mg daily that demonstrated a moderate increase in non life-threatening adverse events, dosage adjustment does not appear to be necessary.

## 10 OVERDOSAGE

Clinical trials have been conducted with exemestane given as a single dose to healthy female volunteers at doses as high as 800 mg and daily for 12 weeks to postmenopausal women with advanced breast cancer at doses as high as 600 mg. These dosages were well tolerated. There is no specific antidote to overdosage and treatment must be symptomatic. General supportive care, including frequent monitoring of vital signs and close observation of the patient, is indicated.

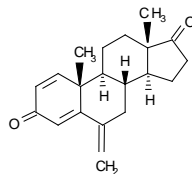
A male child (age unknown) accidentally ingested a 25-mg tablet of exemestane. The initial physical examination was normal, but blood tests performed 1 hour after ingestion indicated leucocytosis (WBC 25000/mm<sup>3</sup> with 90% neutrophils). Blood tests were repeated 4 days after the incident and were normal. No treatment was given.

In mice, mortality was observed after a single oral dose of exemestane of 3200 mg/kg, the lowest dose tested (about 640 times the recommended human dose on a mg/m<sup>2</sup> basis). In rats and dogs, mortality was observed after single oral doses of exemestane of 5000 mg/kg (about 2000 times the recommended human dose on a mg/m<sup>2</sup> basis) and of 3000 mg/kg (about 4000 times the recommended human dose on a mg/m<sup>2</sup> basis), respectively.

Convulsions were observed after single doses of exemestane of 400 mg/kg and 3000 mg/kg in mice and dogs (approximately 80 and 4000 times the recommended human dose on a mg/m<sup>2</sup> basis), respectively.

## 11 DESCRIPTION

AROMASIN® Tablets for oral administration contain 25 mg of exemestane, an irreversible, steroidal aromatase inactivator. Exemestane is chemically described as 6-methylenandrosta-1,4-diene-3,17-dione. Its molecular formula is C<sub>20</sub>H<sub>24</sub>O<sub>2</sub> and its structural formula is as follows:



The active ingredient is a white to slightly yellow crystalline powder with a molecular weight of 296.41. Exemestane is freely soluble in N, N-dimethylformamide, soluble in methanol, and practically insoluble in water.

Each AROMASIN Tablet contains the following inactive ingredients: mannitol, crospovidone, polysorbate 80, hypromellose, colloidal silicon dioxide, microcrystalline cellulose, sodium starch glycolate, magnesium stearate, simethicone, polyethylene glycol 6000, sucrose, magnesium carbonate, titanium dioxide, methylparaben, and polyvinyl alcohol.

## 12 CLINICAL PHARMACOLOGY

### 12.1 Mechanism of Action

Breast cancer cell growth may be estrogen-dependent. Aromatase is the principal enzyme that converts androgens to estrogens both in pre- and postmenopausal women. While the main source of estrogen (primarily estradiol) is the ovary in premenopausal women, the principal source of circulating estrogens in postmenopausal women is from conversion of adrenal and ovarian androgens (androstenedione and testosterone) to estrogens (estrone and estradiol) by the aromatase enzyme in peripheral tissues. Estrogen deprivation through aromatase inhibition is an effective and selective treatment for some postmenopausal patients with hormone-dependent breast cancer.

Exemestane is an irreversible, steroidal aromatase inactivator, structurally related to the natural substrate androstenedione. It acts as a false substrate for the aromatase enzyme, and is processed to an intermediate that binds irreversibly to the active site of the enzyme, causing its inactivation, an effect also known as “suicide inhibition.” Exemestane significantly lowers circulating estrogen concentrations in postmenopausal women, but has no detectable effect on adrenal biosynthesis of corticosteroids or aldosterone. Exemestane has no effect on other enzymes involved in the steroidogenic pathway up to a concentration at least 600 times higher than that inhibiting the aromatase enzyme.

### 12.2 Pharmacodynamics

*Effect on Estrogens:* Multiple doses of exemestane ranging from 0.5 to 600 mg/day were administered to postmenopausal women with advanced breast cancer. Plasma estrogen (estradiol, estrone, and estrone sulfate) suppression was seen starting at a 5-mg daily dose of exemestane, with a maximum suppression of at least 85% to 95% achieved at a 25-mg dose. Exemestane 25 mg daily reduced whole body aromatization (as measured by injecting radiolabeled androstenedione) by 98% in postmenopausal women with breast cancer. After a single dose of exemestane 25 mg, the maximal suppression of circulating estrogens occurred 2 to 3 days after dosing and persisted for 4 to 5 days.

*Effect on Corticosteroids:* In multiple-dose trials of doses up to 200 mg daily, exemestane selectivity was assessed by examining its effect on adrenal steroids. Exemestane did not affect cortisol or aldosterone secretion at baseline or in response to ACTH at any dose. Thus, no glucocorticoid or mineralocorticoid replacement therapy is necessary with exemestane treatment.

*Other Endocrine Effects:* Exemestane does not bind significantly to steroidal receptors, except for a slight affinity for the androgen receptor (0.28% relative to dihydrotestosterone). The binding affinity of its 17-dihydro metabolite for the androgen receptor, however, is 100 times that of the parent compound. Daily doses of exemestane up to 25 mg had no significant effect on circulating levels of androstenedione, dehydroepiandrosterone sulfate, or 17-hydroxyprogesterone, and were associated with small decreases in circulating levels of testosterone. Increases in testosterone and androstenedione levels have been observed at daily doses of 200 mg or more. A dose-dependent decrease in sex hormone binding globulin (SHBG) has been observed with daily exemestane doses of 2.5 mg or higher. Slight, nondose-dependent increases in serum luteinizing hormone (LH) and follicle-stimulating hormone (FSH) levels have been observed even at low doses as a consequence of feedback at the pituitary level. Exemestane 25 mg daily had no significant effect on thyroid function [free triiodothyronine (FT3), free thyroxine (FT4), and thyroid stimulating hormone (TSH)].

*Coagulation and Lipid Effects:* In study 027 of postmenopausal women with early breast cancer treated with exemestane (N=73) or placebo (N=73), there was no change in the coagulation parameters activated partial

thromboplastin time [APTT], prothrombin time [PT], and fibrinogen. Plasma HDL cholesterol was decreased 6–9% in exemestane treated patients; total cholesterol, LDL cholesterol, triglycerides, apolipoprotein-A1, apolipoprotein-B, and lipoprotein-a were unchanged. An 18% increase in homocysteine levels was also observed in exemestane treated patients compared with a 12% increase seen with placebo.

### 12.3 Pharmacokinetics

Following oral administration to healthy postmenopausal women, plasma concentrations of exemestane decline polyexponentially with a mean terminal half-life of about 24 hours. The pharmacokinetics of exemestane are dose proportional after single (10 to 200 mg) or repeated oral doses (0.5 to 50 mg). Following repeated daily doses of exemestane 25 mg, plasma concentrations of unchanged drug are similar to levels measured after a single dose. Pharmacokinetic parameters in postmenopausal women with advanced breast cancer following single or repeated doses have been compared with those in healthy, postmenopausal women. After repeated dosing, the average oral clearance in women with advanced breast cancer was 45% lower than the oral clearance in healthy postmenopausal women, with corresponding higher systemic exposure. Mean AUC values following repeated doses in women with breast cancer (75.4 ng·h/mL) were about twice those in healthy women (41.4 ng·h/mL).

*Absorption:* Following oral administration, exemestane appeared to be absorbed more rapidly in women with breast cancer than in the healthy women, with a mean  $-t_{\max}$  of 1.2 hours in the women with breast cancer and 2.9 hours in healthy women. Approximately 42% of radiolabeled exemestane was absorbed from the gastrointestinal tract. A high-fat breakfast increased AUC and  $C_{\max}$  of exemestane by 59% and 39%, respectively, compared to fasted state.

*Distribution:* Exemestane is distributed extensively into tissues. Exemestane is 90% bound to plasma proteins and the fraction bound is independent of the total concentration. Albumin and  $\alpha_1$ 1-acid glycoprotein both contribute to the binding. The distribution of exemestane and its metabolites into blood cells is negligible.

*Metabolism:* Exemestane is extensively metabolized, with levels of the unchanged drug in plasma accounting for less than 10% of the total radioactivity. The initial steps in the metabolism of exemestane are oxidation of the methylene group in position 6 and reduction of the 17-keto group with subsequent formation of many secondary metabolites. Each metabolite accounts only for a limited amount of drug-related material. The metabolites are inactive or inhibit aromatase with decreased potency compared with the parent drug. One metabolite may have androgenic activity [see *Clinical Pharmacology* (12.2)]. Studies using human liver preparations indicate that cytochrome P 450 3A4 (CYP 3A4) is the principal isoenzyme involved in the oxidation of exemestane. Exemestane is metabolized also by aldoketoreductases.

*Elimination:* Following administration of radiolabeled exemestane to healthy postmenopausal women, the cumulative amounts of radioactivity excreted in urine and feces were similar ( $42 \pm 3\%$  in urine and  $42 \pm 6\%$  in feces over a 1-week collection period). The amount of drug excreted unchanged in urine was less than 1% of the dose.

#### *Specific Populations*

*Geriatric:* Healthy postmenopausal women aged 43 to 68 years were studied in the pharmacokinetic trials. Age-related alterations in exemestane pharmacokinetics were not seen over this age range.

*Gender:* The pharmacokinetics of exemestane following administration of a single, 25-mg tablet to fasted healthy males (mean age 32 years) were similar to the pharmacokinetics of exemestane in fasted healthy postmenopausal women (mean age 55 years).

*Race:* The influence of race on exemestane pharmacokinetics has not been evaluated.

*Hepatic Impairment:* The pharmacokinetics of exemestane have been investigated in subjects with moderate or severe hepatic impairment (Childs-Pugh B or C). Following a single 25-mg oral dose, the AUC of exemestane was approximately 3 times higher than that observed in healthy volunteers.

*Renal Impairment:* The AUC of exemestane after a single 25-mg dose was approximately 3 times higher in subjects with moderate or severe renal insufficiency (creatinine clearance  $<35$  mL/min/1.73 m<sup>2</sup>) compared with the AUC in healthy volunteers.

*Pediatric:* The pharmacokinetics of exemestane have not been studied in pediatric patients.

#### **Drug Interactions**

Exemestane does not inhibit any of the major CYP isoenzymes, including CYP 1A2, 2C9, 2D6, 2E1, and 3A4.

In a pharmacokinetic interaction study of 10 healthy postmenopausal volunteers pretreated with potent CYP 3A4 inducer rifampicin 600 mg daily for 14 days followed by a single dose of exemestane 25 mg, the mean

plasma  $C_{max}$  and  $AUC_{0-\infty}$  of exemestane were decreased by 41% and 54%, respectively [see *Dosage and Administration (2.2) and Drug Interactions (7)*].

In a clinical pharmacokinetic study, coadministration of ketoconazole, a potent inhibitor of CYP 3A4, has no significant effect on exemestane pharmacokinetics. Although no other formal drug-drug interaction studies with inhibitors have been conducted, significant effects on exemestane clearance by CYP isoenzyme inhibitors appear unlikely.

## 13 NONCLINICAL TOXICOLOGY

### 13.1 Carcinogenesis, Mutagenesis, Impairment of Fertility

A 2-year carcinogenicity study in mice at doses of 50, 150, and 450 mg/kg/day exemestane (gavage), resulted in an increased incidence of hepatocellular adenomas and/or carcinomas in both genders at the high dose level. Plasma  $AUC_{(0-24hr)}$  at the high dose were  $2575 \pm 386$  and  $5667 \pm 1833$  ng.hr/mL in males and females (approx. 34 and 75 fold the  $AUC$  in postmenopausal patients at the recommended clinical dose). An increased incidence of renal tubular adenomas was observed in male mice at the high dose of 450 mg/kg/day. Since the doses tested in mice did not achieve an MTD, neoplastic findings in organs other than liver and kidneys remain unknown.

A separate carcinogenicity study was conducted in rats at the doses of 30, 100, and 315 mg/kg/day exemestane (gavage) for 92 weeks in males and 2 years in females. No evidence of carcinogenic activity up to the highest dose tested of 315 mg/kg/day was observed in females. The male rat study was inconclusive since it was terminated prematurely at Week 92. At the highest dose, plasma  $AUC_{(0-24hr)}$  levels in male ( $1418 \pm 287$  ng.hr/mL) and female ( $2318 \pm 1067$  ng.hr/mL) rats were 19 and 31 fold higher than those measured in postmenopausal cancer patients receiving the recommended clinical dose.

Exemestane was not mutagenic *in vitro* in bacteria (Ames test) or mammalian cells (V79 Chinese hamster lung cells). Exemestane was clastogenic in human lymphocytes *in vitro* without metabolic activation but was not clastogenic *in vivo* (micronucleus assay in mouse bone marrow). Exemestane did not increase unscheduled DNA synthesis in rat hepatocytes when tested *in vitro*.

In a pilot reproductive study in rats, male rats were treated with doses of 125–1000 mg/kg/day exemestane, beginning 63 days prior to and during cohabitation. Untreated female rats showed reduced fertility when mated to males treated with  $\geq 500$  mg/kg/day exemestane ( $\geq 200$  times the recommended human dose on a  $mg/m^2$  basis). In a separate study, exemestane was given to female rats at 4–100 mg/kg/day beginning 14 days prior to mating and through day 15 or 20 of gestation. Exemestane increased the placental weights at  $\geq 4$  mg/kg/day ( $\geq 1.5$  times the human dose on a  $mg/m^2$  basis). Exemestane showed no effects on ovarian function, mating behavior, and conception rate in rats given doses up to 20 mg/kg/day (approximately 8 times the recommended human dose on a  $mg/m^2$  basis); however, decreases in mean litter size and fetal body weight, along with delayed ossification were evidenced at  $\geq 20$  mg/kg/day. In general toxicology studies, changes in the ovary, including hyperplasia, an increase in the incidence of ovarian cysts, and a decrease in corpora lutea were observed with variable frequency in mice, rats, and dogs at doses that ranged from 3–20 times the human dose on a  $mg/m^2$  basis.

## 14 CLINICAL STUDIES

### 14.1 Adjuvant Treatment in Early Breast Cancer

The Intergroup Exemestane Study 031 (IES) was a randomized, double-blind, multicenter, multinational study comparing exemestane (25 mg/day) vs. tamoxifen (20 or 30 mg/day) in postmenopausal women with early breast cancer. Patients who remained disease-free after receiving adjuvant tamoxifen therapy for 2 to 3 years were randomized to receive an additional 3 or 2 years of AROMASIN or tamoxifen to complete a total of 5 years of hormonal therapy.

The primary objective of the study was to determine whether, in terms of disease-free survival, it was more effective to switch to AROMASIN rather than continuing tamoxifen therapy for the remainder of five years. Disease-free survival was defined as the time from randomization to time of local or distant recurrence of breast cancer, contralateral invasive breast cancer, or death from any cause.

The secondary objectives were to compare the two regimens in terms of overall survival and long-term tolerability. Time to contralateral invasive breast cancer and distant recurrence-free survival were also evaluated.

A total of 4724 patients in the intent-to-treat (ITT) analysis were randomized to AROMASIN (exemestane tablets) 25 mg once daily (N = 2352) or to continue to receive tamoxifen once daily at the same dose received before randomization (N = 2372). Demographics and baseline tumor characteristics are presented in Table 5. Prior breast cancer therapy is summarized in Table 6.

**Table 5. Demographic and Baseline Tumor Characteristics from the IES Study of Postmenopausal Women with Early Breast Cancer (ITT Population)**

| Parameter  | Exemestane<br>(N = 2352)  | Tamoxifen<br>(N = 2372)  |
|--|---|--|
| <b>Age (years):</b><br>Median age (range)  | 63.0 (38.0 – 96.0)  | 63.0 (31.0 – 90.0)   |
| <b>Race, n (%):</b><br>Caucasian<br>Hispanic<br>Asian<br>Black<br>Other/not reported   | 2315 (98.4)<br>13 (0.6)<br>10 (0.4)<br>7 (0.3)<br>7 (0.3)                                 | 2333 (98.4)<br>13 (0.5)<br>9 (0.4)<br>10 (0.4)<br>7 (0.3)                                  |
| <b>Nodal status, n (%):</b><br>Negative<br>Positive<br>1–3 Positive nodes<br>4–9 Positive nodes<br>>9 Positive nodes<br>Not reported<br>Unknown or missing   | 1217 (51.7)<br>1051 (44.7)<br>721 (30.7)<br>239 (10.2)<br>88 (3.7)<br>3 (0.1)<br>84 (3.6) | 1228 (51.8)<br>1044 (44.0)<br>708 (29.8)<br>244 (10.3)<br>86 (3.6)<br>6 (0.3)<br>100 (4.2) |
| <b>Histologic type, n (%):</b><br>Infiltrating ductal<br>Infiltrating lobular<br>Other<br>Unknown or missing   | 1777 (75.6)<br>341 (14.5)<br>231 (9.8)<br>3 (0.1)   | 1830 (77.2)<br>321 (13.5)<br>213 (9.0)<br>8 (0.3)  |
| <b>Receptor status*, n (%):</b><br>ER and PgR Positive<br>ER Positive and PgR Negative/Unknown<br>ER Unknown and PgR Positive**/Unknown<br>ER Negative and PgR Positive<br>ER Negative and PgR Negative/Unknown (none positive)<br>Missing | 1331 (56.6)<br>677 (28.8)<br>288 (12.2)<br>6 (0.3)<br>48 (2.0)<br>2 (0.1)                 | 1319 (55.6)<br>692 (29.2)<br>291 (12.3)<br>7 (0.3)<br>58 (2.4)<br>5 (0.2)                  |
| <b>Tumor Size, n (%):</b><br>≤ 0.5 cm<br>> 0.5 – 1.0 cm<br>> 1.0 – 2 cm<br>> 2.0 – 5.0 cm<br>> 5.0 cm<br>Not reported  | 58 (2.5)<br>315 (13.4)<br>1031 (43.8)<br>833 (35.4)<br>62 (2.6)<br>53 (2.3)               | 46 (1.9)<br>302 (12.7)<br>1033 (43.5)<br>883 (37.2)<br>59 (2.5)<br>49 (2.1)                |
| <b>Tumor Grade, n (%):</b><br>G1<br>G2<br>G3<br>G4<br>Unknown/Not Assessed/Not reported  | 397 (16.9)<br>977 (41.5)<br>454 (19.3)<br>23 (1.0)<br>501 (21.3)                          | 393 (16.6)<br>1007 (42.5)<br>428 (18.0)<br>19 (0.8)<br>525 (22.1)                          |

\* Results for receptor status include the results of the post-randomization testing of specimens from subjects for whom receptor status was unknown at randomization.

\*\* Only one subject in the exemestane group had unknown ER status and positive PgR status.

**Table 6. Prior Breast Cancer Therapy of Patients in the IES Study of Postmenopausal Women with Early Breast Cancer (ITT Population)**

| Parameter   | Exemestane<br>(N = 2352) | Tamoxifen<br>(N = 2372) |
|---|--------------------------|-------------------------|
| <b>Type of surgery, n (%):</b>                                  |                          |                         |
| Mastectomy  | 1232 (52.4)              | 1242 (52.4)             |
| Breast-conserving   | 1116 (47.4)              | 1123 (47.3)             |
| Unknown or missing  | 4 (0.2)                  | 7 (0.3)                 |
| <b>Radiotherapy to the breast, n (%):</b>                       |                          |                         |
| Yes   | 1524 (64.8)              | 1523 (64.2)             |
| No  | 824 (35.5)               | 843 (35.5)              |
| Not reported  | 4 (0.2)                  | 6 (0.3)                 |
| <b>Prior therapy, n (%):</b>                                    |                          |                         |
| Chemotherapy  | 774 (32.9)               | 769 (32.4)              |
| Hormone replacement therapy                                     | 567 (24.1)               | 561 (23.7)              |
| Bisphosphonates   | 43 (1.8)                 | 34 (1.4)                |
| <b>Duration of tamoxifen therapy at randomization (months):</b> |                          |                         |
| Median (range)  | 28.5 (15.8 – 52.2)       | 28.4 (15.6 – 63.0)      |
| <b>Tamoxifen dose, n (%):</b>                                   |                          |                         |
| 20 mg   | 2270 (96.5)              | 2287 (96.4)             |
| 30 mg*  | 78 (3.3)                 | 75 (3.2)                |
| Not reported  | 4 (0.2)                  | 10 (0.4)                |

\*The 30 mg dose was used only in Denmark, where this dose was the standard of care.

After a median duration of therapy of 27 months and with a median follow-up of 34.5 months, 520 events were reported, 213 in the AROMASIN group and 307 in the tamoxifen group (Table 7).

**Table 7. Primary Endpoint Events (ITT Population)**

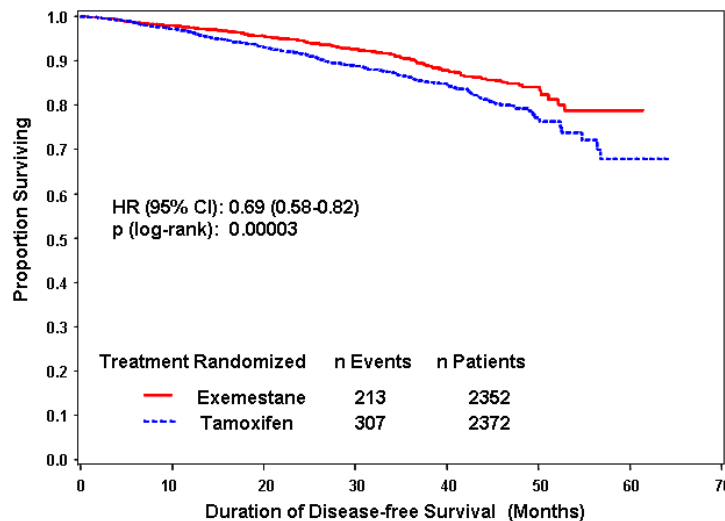
| Event   | First Events<br>N (%)    |                         |
|---|--------------------------|-------------------------|
|   | Exemestane<br>(N = 2352) | Tamoxifen<br>(N = 2372) |
| Loco-regional recurrence                        | 34 (1.45)                | 45 (1.90)               |
| Distant recurrence                              | 126 (5.36)               | 183 (7.72)              |
| Second primary –<br>contralateral breast cancer | 7 (0.30)                 | 25 (1.05)               |
| Death – breast cancer                           | 1 (0.04)                 | 6 (0.25)                |
| Death – other reason                            | 41 (1.74)                | 43 (1.81)               |
| Death – missing/unknown                         | 3 (0.13)                 | 5 (0.21)                |
| Ipsilateral breast cancer                       | 1 (0.04)                 | 0                       |
| <b>Total number of events</b>                   | <b>213 (9.06)</b>        | <b>307 (12.94)</b>      |

Disease-free survival in the intent-to-treat population was statistically significantly improved [Hazard Ratio (HR) = 0.69, 95% CI: 0.58, 0.82, P = 0.00003, Table 8, Figure 1] in the AROMASIN arm compared to the tamoxifen arm. In the hormone receptor-positive subpopulation representing about 85% of the trial patients, disease-free survival was also statistically significantly improved (HR = 0.65, 95% CI: 0.53, 0.79, P = 0.00001) in the AROMASIN arm compared to the tamoxifen arm. Consistent results were observed in the subgroups of patients with node negative or positive disease, and patients who had or had not received prior chemotherapy. Overall survival was not significantly different in the two groups, with 116 deaths occurring in the AROMASIN group and 137 in the tamoxifen group.

**Table 8. Efficacy Results from the IES Study in Postmenopausal Women with Early Breast Cancer**

| ITT Population                      | Hazard Ratio (95% CI) | p-value (log-rank test) |
|-------------------------------------|-----------------------|-------------------------|
| Disease-free survival               | 0.69 (0.58–0.82)      | 0.00003                 |
| Time to contralateral breast cancer | 0.32 (0.15–0.72)      | 0.00340                 |
| Distant recurrence-free survival    | 0.74 (0.62–0.90)      | 0.00207                 |
| Overall survival                    | 0.86 (0.67–1.10)      | 0.22962                 |
| <b>ER and/or PgR positive</b>       |                       |                         |
| Disease-free survival               | 0.65 (0.53–0.79)      | 0.00001                 |
| Time to contralateral breast cancer | 0.22 (0.08–0.57)      | 0.00069                 |
| Distant recurrence-free survival    | 0.73 (0.59–0.90)      | 0.00367                 |
| Overall survival                    | 0.88 (0.67–1.17)      | 0.37460                 |

**Figure 1. Disease-Free Survival in the IES Study of Postmenopausal Women with Early Breast Cancer (ITT Population)**



#### 14.2 Treatment of Advanced Breast Cancer

Exemestane 25 mg administered once daily was evaluated in a randomized double-blind, multicenter, multinational comparative study and in two multicenter single-arm studies of postmenopausal women with advanced breast cancer who had disease progression after treatment with tamoxifen for metastatic disease or as adjuvant therapy. Some patients also have received prior cytotoxic therapy, either as adjuvant treatment or for metastatic disease.

The primary purpose of the three studies was evaluation of objective response rate (complete response [CR] and partial response [PR]). Time to tumor progression and overall survival were also assessed in the comparative trial. Response rates were assessed based on World Health Organization (WHO) criteria, and in the comparative study, were submitted to an external review committee that was blinded to patient treatment. In the comparative study, 769 patients were randomized to receive AROMASIN (exemestane tablets) 25 mg once daily (N = 366) or megestrol acetate 40 mg four times daily (N = 403). Demographics and baseline characteristics are presented in Table 9.

**Table 9. Demographics and Baseline Characteristics from the Comparative Study of Postmenopausal Women with Advanced Breast Cancer Whose Disease Had Progressed after Tamoxifen Therapy**

| Parameter                     | AROMASIN (N = 366) | Megestrol Acetate (N = 403) |
|-------------------------------|--------------------|-----------------------------|
| Median Age (range)            | 65 (35–89)         | 65 (30–91)                  |
| ECOG Performance Status       |                    |                             |
| 0                             | 167 (46%)          | 187 (46%)                   |
| 1                             | 162 (44%)          | 172 (43%)                   |
| 2                             | 34 (9%)            | 42 (10%)                    |
| Receptor Status               |                    |                             |
| ER and/or PgR +               | 246 (67%)          | 274 (68%)                   |
| ER and PgR unknown            | 116 (32%)          | 128 (32%)                   |
| Responders to prior tamoxifen | 68 (19%)           | 85 (21%)                    |

|                                    |           |           |
|------------------------------------|-----------|-----------|
| NE for response to prior tamoxifen | 46 (13%)  | 41 (10%)  |
| Site of Metastasis                 |           |           |
| Visceral ± other sites             | 207 (57%) | 239 (59%) |
| Bone only                          | 61 (17%)  | 73 (18%)  |
| Soft tissue only                   | 54 (15%)  | 51 (13%)  |
| Bone & soft tissue                 | 43 (12%)  | 38 (9%)   |
| Measurable Disease                 | 287 (78%) | 314 (78%) |
| Prior Tamoxifen Therapy            |           |           |
| Adjuvant or Neoadjuvant            | 145 (40%) | 152 (38%) |
| Advanced Disease, Outcome          |           |           |
| CR, PR, or SD ≥ 6 months           | 179 (49%) | 210 (52%) |
| SD < 6 months, PD or NE            | 42 (12%)  | 41 (10%)  |
| Prior Chemotherapy                 |           |           |
| For advanced disease ± adjuvant    | 58 (16%)  | 67 (17%)  |
| Adjuvant only                      | 104 (28%) | 108 (27%) |
| No chemotherapy                    | 203 (56%) | 226 (56%) |

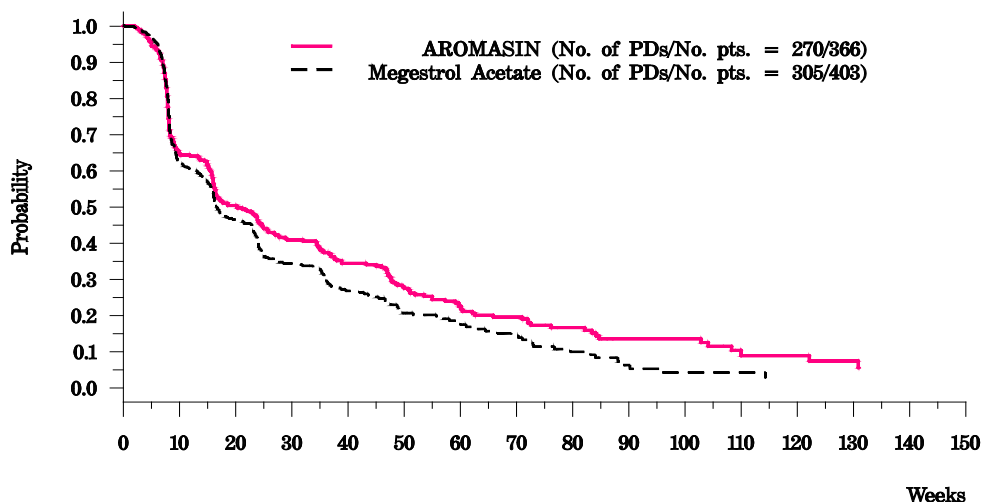
The efficacy results from the comparative study are shown in Table 10. The objective response rates observed in the two treatment arms showed that AROMASIN was not different from megestrol acetate. Response rates for AROMASIN from the two single-arm trials were 23.4% and 28.1%.

**Table 10. Efficacy Results from the Comparative Study of Postmenopausal Women with Advanced Breast Cancer Whose Disease Had Progressed after Tamoxifen Therapy**

| Response Characteristics  | AROMASIN<br>(N=366) | Megestrol Acetate<br>(N=403) |
|---|---------------------|------------------------------|
| Objective Response Rate = CR + PR (%)   | 15.0                | 12.4                         |
| Difference in Response Rate (AR-MA)   | 2.6                 |                              |
| 95% C.I.  | 7.5, -2.3           |                              |
| CR (%)  | 2.2                 | 1.2                          |
| PR (%)  | 12.8                | 11.2                         |
| SD ≥ 24 Weeks (%)   | 21.3                | 21.1                         |
| Median Duration of Response (weeks)   | 76.1                | 71.0                         |
| Median TTP (weeks)  | 20.3                | 16.6                         |
| Hazard Ratio (AR-MA)  | 0.84                |                              |
| Abbreviations: CR = complete response, PR = partial response, SD = stable disease (no change), TTP = time to tumor progression, C.I. = confidence interval, MA = megestrol acetate, AR = AROMASIN |                     |                              |

There were too few deaths occurring across treatment groups to draw conclusions on overall survival differences. The Kaplan-Meier curve for time to tumor progression in the comparative study is shown in Figure 2.

**Figure 2. Time to Tumor Progression in the Comparative Study of Postmenopausal Women With Advanced Breast Cancer Whose Disease Had Progressed After Tamoxifen Therapy**



## 16 HOW SUPPLIED/STORAGE AND HANDLING

AROMASIN Tablets are round, biconvex, and off-white to slightly gray. Each tablet contains 25 mg of exemestane. The tablets are printed on one side with the number “7663” in black.

AROMASIN is packaged in HDPE bottles with a child-resistant screw cap, supplied in packs of 30 tablets.

30-tablet HDPE bottle                      NDC 0009-7663-04

Store at 25°C (77°F); excursions permitted to 15°–30°C (59°–86°F) [see USP Controlled Room Temperature].

## 17 PATIENT COUNSELING INFORMATION

See FDA-Approved Patient Labeling

### 17.1 Premenopausal Women

Patients should be advised that AROMASIN is not for use in premenopausal women.

### 17.2 Other Estrogen-Containing Agents

Patients should be informed that they should not take estrogen-containing agents while they are taking AROMASIN as these could interfere with its pharmacologic action.

### 17.3 Bone Effects

Patients should be informed that AROMASIN lowers the level of estrogen in the body. This may lead to reduction in bone mineral density (BMD) over time. The lower the BMD, the greater the risk of osteoporosis and fracture.

Distributed by  
 **Pharmacia & Upjohn Company**  
Division of Pfizer Inc, NY, NY 10017

LAB-0098-17.0

## **FDA- Approved Patient Labeling**

### **Patient Information** **AROMASIN® (ah ROME ah sin)** **(exemestane tablets)**

Read the patient information leaflet that comes with AROMASIN before you start taking it. Read the leaflet each time you get a refill. There may be new information. This leaflet does not replace talking with your doctor about your condition or treatment. If you have any questions about AROMASIN, ask your nurse, doctor, or pharmacist.

#### **What is AROMASIN?**

AROMASIN is used in women who are past menopause. It is used in:

- **Early breast cancer** (cancer that has *not* spread outside the breast). AROMASIN lowers the risk the cancer will come back. It is for women who:
  - Have cancer that needs the female hormone estrogen to grow *and*
  - Had surgery for breast cancer, and possibly other treatments for breast cancer including radiation or chemotherapy *and*
  - Have taken tamoxifen for 2 to 3 years *and*
  - Are switching to AROMASIN to finish 5 years in a row of hormonal therapy.
- **Advanced breast cancer** (cancer that has spread), to treat cancer that came back after treatment with tamoxifen.

Certain breast cancers need the female hormone estrogen to grow (estrogen receptor-positive cancer).

While you are taking AROMASIN, your body stops making estrogen. AROMASIN may slow or stop the growth of the cancer.

AROMASIN is hormone therapy. It is not chemotherapy. It is not hormone replacement therapy (HRT).

#### **Who should not take AROMASIN?**

Do not take AROMASIN if:

- You are allergic to AROMASIN or anything in it. The active ingredient is exemestane. There is a list of what is in AROMASIN at the end of this leaflet.

#### **What should I tell my doctor before taking AROMASIN?**

**Tell your doctor about all your medical conditions.** Be sure to tell your doctor if you:

- Are still having menstrual periods (are not past menopause). AROMASIN is only for women who are past menopause.
- Are pregnant or could be pregnant. Taking AROMASIN during pregnancy may cause birth defects or miscarriage.
- Are breast-feeding. Do not breast-feed while you are being treated with AROMASIN.
- Have liver or kidney problems.

**Tell your doctor about all the medicines you take.** Include prescription and nonprescription medicines, herbal remedies, and vitamins. AROMASIN and other medicines may affect how each other work.

Be sure to tell your doctor if you take:

- Medicines with estrogen, such as Premarin® , other hormone replacement therapy, or birth control pills or patches. AROMASIN should not be taken with these medicines as they could affect how well AROMASIN works.
- Rifadin® (rifampin)
- Dilantin® (phenytoin), Tegretol® (carbamazepine), or Luminal® (phenobarbital)
- St. John's wort

Know what medicines you take. Keep a list of them with you. Show it to your doctor or pharmacist each time you get a new prescription.

**What are the possible side effects of AROMASIN?**

***Serious Side Effects***

- Bone loss. AROMASIN may reduce your bone mineral density (BMD) over time. This may raise your risk for bone fractures.
- Chest pain, heart failure, or stroke. A small number of women had chest pain, heart failure, or a stroke while taking AROMASIN.

***Common Side Effects***

- hot flashes
- headache
- depression
- difficulty in breathing
- feeling tired
- trouble sleeping
- feeling anxious
- joint pain
- increased sweating
- upset stomach

Your doctor may do blood tests to check your liver and kidney function during treatment.

These are not all the side effects with AROMASIN. Ask your cancer nurse or doctor for a more complete list.

**How should I take AROMASIN?**

- Take your dose of AROMASIN once a day, every day, after a meal. AROMASIN comes in 25mg tablets you take by mouth. Your doctor will tell you how many AROMASIN tablets to take for your dose.
- Try to take your treatment at the same time each day.
- Take your medicine for as long as your doctor tells you.
- Tell your doctor if you do not feel well after starting AROMASIN.
- If you miss a dose of AROMASIN, take it as soon as you remember. If it is close to your next dose, just take your next dose at your regular time.
- Don't take more than one dose of AROMASIN at a time.
- Make a note of when your prescription will run out. That way, you can get it refilled on time.

**How should I store AROMASIN?**

- Keep AROMASIN and all medicines out of the reach of children.
- Store AROMASIN at room temperature, 77°F (25°C), in its original container.

**General information about AROMASIN**

Doctors can prescribe medicines for conditions that are not in the patient information leaflet. Use AROMASIN only for what your doctor prescribed. Do not give it to other people, even if they have the same conditions you have. It may harm them.

This leaflet gives the most important information about AROMASIN. For more information about AROMASIN, talk with your doctor, nurse, or pharmacist. You can visit our Web site at [www.AROMASIN.com](http://www.AROMASIN.com), or call 1-888-AROMASIN (1-888-276-6274).

**What is in AROMASIN?**

**Active ingredient:** exemestane

**Inactive ingredients:** mannitol, crospovidone, polysorbate 80, hypromellose, colloidal silicon dioxide, microcrystalline cellulose, sodium starch glycolate, magnesium stearate, simethicone, polyethylene glycol 6000, sucrose, magnesium carbonate, titanium dioxide, methylparaben, and polyvinyl alcohol.



*Distributed by*

**Pharmacia & Upjohn Company**

Division of Pfizer Inc, NY, NY 10017

May 2014  
LAB-0399-6.0