

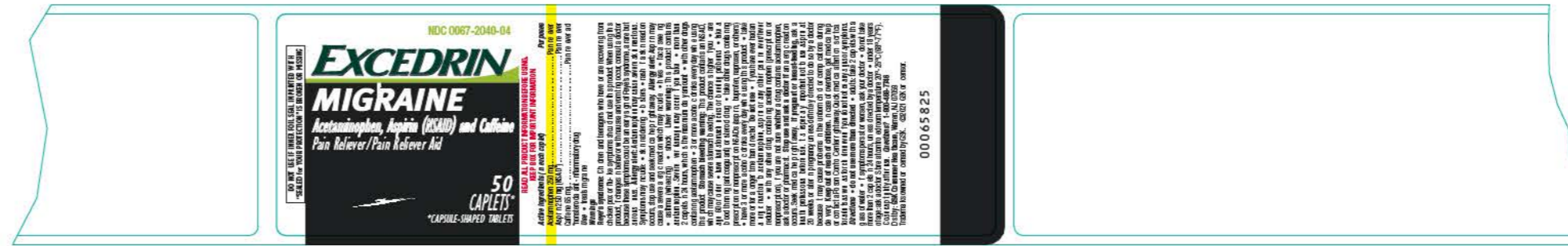
GSK Regulatory Spec Box		Verified Date: 05.13.21	
Drug Facts Info			
Drug Facts			N/A
Drug Facts (continued)			N/A
Headings	Helvetica Bold Condensed Italic		4.5 pt.
Subheadings	Helvetica Bold Condensed		4.5 pt.
Body text	Helvetica Condensed / Bold Condensed		4.5 pt.
Bullets	Helvetica Condensed		4 pt.
Bullets on same lines: end of statement separated from bulleted statement by two ems			No
Spacing of the hair lines from edge of box - i.e. Minimum of 2 spaces either side of Drug Fact Box			N/A
Tracking:	5-10	Horizontal Scale:	83%
Leading:	6.5 pt.	Maximum Characters/Inch:	> 39
Barlines:	N/A	Hairlines:	N/A
Primary Display Panel Info			
Size of Net Wt/Contents (Smallest character height in inches)*			> 0.062 in.
PDP dimensions (in square inches)			< 5 sq. in.
Ratio of Statement of Identity to Logo/Largest Copy on PDP			
Statement of Identity (pt.) (Divided by) Largest Logo Copy (pt.)			
Vertical PDP: N/A		Horizontal PDP: 29%	



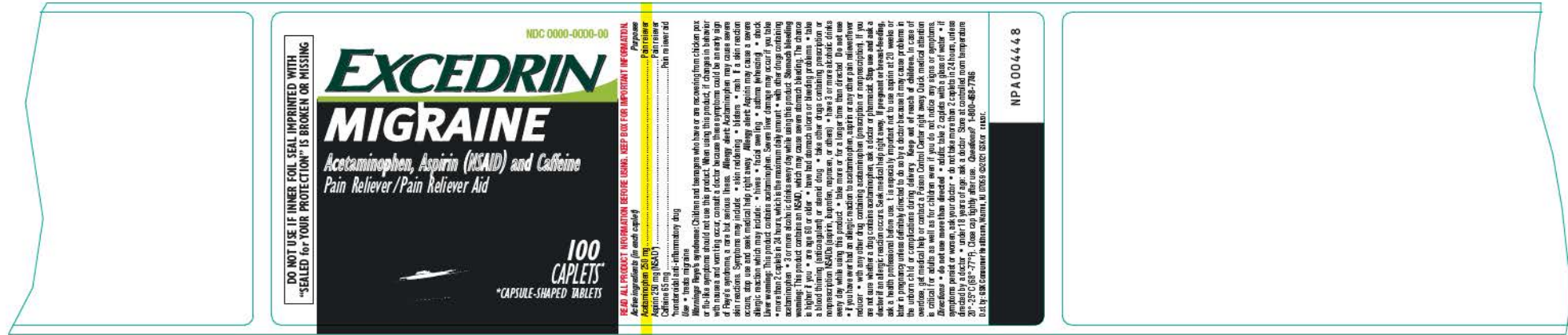
GSK Regulatory Spec Box		Verified Date: 05.20.21
Drug Facts Info		
Drug Facts	N/A	N/A
Drug Facts (continued)	N/A	N/A
Headings	Helvetica Bold Condensed Italic	4.75 pt
Subheadings	Helvetica Bold Condensed	4.75 pt
Body text	Helvetica Condensed / Bold Condensed	4.75 pt
Bullets	Helvetica Condensed	4 pt.
Bullets on same lines: end of statement separated from bulleted statement by two ems		No
Spacing of the hair lines from edge of box - i.e. Minimum of 2 spaces either side of Drug Fact Box		N/A
Tracking:	-3	Horizontal Scale: 83%
Leading:	4.85 pt.	Maximum Characters/Inch: > 39
Barlines:	N/A	Hairlines: N/A
Primary Display Panel Info		
Size of Net Wt./Contents (Smallest character height in inches)*		> 0.062 in.
PDP dimensions (in square inches)		< 5 sq. in.
Ratio of Statement of Identity to Logo/Largest Copy on PDP		
Statement of Identity (pt.) (Divided by) Largest Logo Copy (pt.)		
Vertical PDP: N/A		Horizontal PDP: 36%



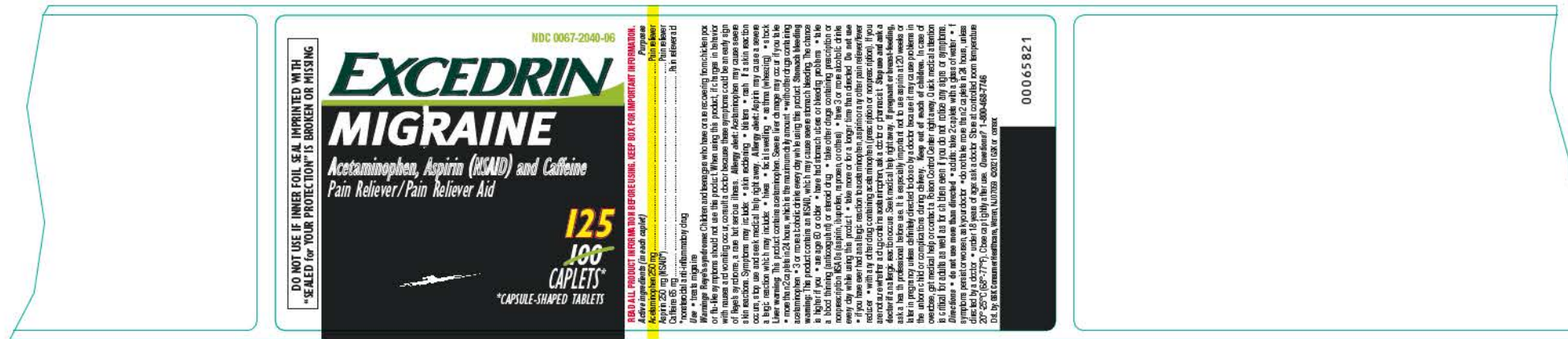
GSK Regulatory Spec Box		Verified Date: 05.20.21
Drug Facts Info		
Drug Facts	N/A	N/A
Drug Facts (continued)	N/A	N/A
Headings	Helvetica Bold Condensed Italic	4.75 pt
Subheadings	Helvetica Bold Condensed	4.75 pt
Body text	Helvetica Condensed / Bold Condensed	4.75 pt
Bullets	Helvetica Condensed	4 pt
Bullets on same lines: end of statement separated from bulleted statement by two ems		No
Spacing of the hair lines from edge of box - i.e. Minimum of 2 spaces either side of Drug Fact Box		N/A
Tracking:	-3	Horizontal Scale: 83%
Leading:	4.85 pt.	Maximum Characters/Inch: > 39
Barlines:	N/A	Hairlines: N/A
Primary Display Panel Info		
Size of Net Wt./Contents (Smallest character height in inches)*		> 0.062 in.
PDP dimensions (in square inches)		< 5 sq. in.
Ratio of Statement of Identity to Logo/Largest Copy on PDP		
Statement of Identity (pt.) (Divided by) Largest Logo Copy (pt.)		
Vertical PDP: N/A		Horizontal PDP: 36%



GSK Regulatory Spec Box		Verified Date: 05.21.21	
Drug Facts Info			
Drug Facts	N/A	N/A	
Drug Facts (continued)	N/A	N/A	
Headings	Helvetica Bold Condensed Italic	4 pt	
Subheadings	Helvetica Bold Condensed	4 pt	
Body text	Helvetica Condensed / Bold Condensed	4 pt	
Bullets	Helvetica Condensed	3.5 pt.	
Bullets on same lines: end of statement separated from bulleted statement by two ems		No	
Spacing of the hair lines from edge of box - i.e. Minimum of 2 spaces either side of Drug Fact Box		N/A	
Tracking:	0	Horizontal Scale:	83%
Leading:	4.1 pt.	Maximum Characters/Inch:	> 39
Barlines:	N/A	Hairlines:	N/A
Primary Display Panel Info			
Size of Net Wt/Contents (Smallest character height in inches)*		> 0.062 in.	
PDP dimensions (in square inches)		< 5 sq. in.	
Ratio of Statement of Identity to Logo/Largest Copy on PDP Statement of Identity (pt.) (Divided by) Largest Logo Copy (pt.)			
Vertical PDP: N/A		Horizontal PDP: 40%	



GSK Regulatory Spec Box		Verified Date: 05.13.21
Drug Facts Info		
Drug Facts	Helvetica Bold Condensed Italic	N/A
Drug Facts (continued)	Helvetica Bold Condensed Italic / Condensed	N/A
Headings	Helvetica Bold Condensed Italic	4.75 pt.
Subheadings	Helvetica Bold Condensed	4.75 pt.
Body text	Helvetica Condensed / Bold Condensed	4.75 pt.
Bullets	Helvetica Condensed	4 pt.
Bullets on same lines: end of statement separated from bulleted statement by two ems		N/A
Spacing of the hair lines from edge of box-i.e. Minimum of 2 spaces either side of Drug Fact Box		N/A
Tracking:	0	Horizontal Scale: 82%
Leading:	5.0 pt.	Maximum Characters/Inch: > 39
Barlines:	N/A	Hairlines: N/A
Primary Display Panel Info		
Size of Net Wt/Contents (Smallest character height in inches)*		> 0.125 in.
PDP dimensions (in square inches)		< 5 sq. in.
Ratio of Statement of Identity to Logo/Largest Copy on PDP		
Statement of Identity (pt.) (Divided by) Largest Logo Copy (pt.)		
Vertical PDP: N/A		Horizontal PDP: 40%



GSK Regulatory Spec Box		Verified Date: 05.21.21
Drug Facts Info		
<i>Drug Facts</i>	N/A	N/A
<i>Drug Facts (continued)</i>	N/A	N/A
Headings	Helvetica Bold Condensed Italic	4.75 pt.
Subheadings	Helvetica Bold Condensed	4.75 pt.
Body text	Helvetica Condensed / Bold Condensed	4.75 pt.
Bullets	Helvetica Condensed	4 pt.
Bullets on same lines: end of statement separated from bulleted statement by two ems		No
Spacing of the hair lines from edge of box -i.e. Minimum of 2 spaces either side of Drug Fact Box		N/A
Tracking:	0	Horizontal Scale: 82%
Leading:	5.0 pt.	Maximum Characters/Inch: > 39
Barlines:	N/A	Hairlines: N/A
Primary Display Panel Info		
Size of Net Wt/Contents (Smallest character height in inches)*		> 0.125 in.
PDP dimensions (in square inches)		< 5 sq. in.
Ratio of Statement of Identity to Logo/Largest Copy on PDP		
Statement of Identity (pt.) (Divided by) Largest Logo Copy (pt.)		
	Vertical PDP: N/A	Horizontal PDP: 40%



GSK Regulatory Spec Box		Verified Date: 05.20.21
Drug Facts Info		
Drug Facts	N/A	N/A
Drug Facts (continued)	N/A	N/A
Headings	Helvetica Bold Condensed Italic	4.75 pt.
Subheadings	Helvetica Bold Condensed	4.75 pt.
Body text	Helvetica Condensed / Bold Condensed	4.75 pt.
Bullets	Helvetica Condensed	4 pt.
Bullets on same lines: end of statement separated from bulleted statement by two ems		No
Spacing of the hair lines from edge of box - i.e. Minimum of 2 spaces either side of Drug Fact Box		N/A
Tracking:	0	Horizontal Scale: 82%
Leading:	5.0 pt.	Maximum Characters/Inch: > 39
Barlines:	N/A	Hairlines: N/A
Primary Display Panel Info		
Size of Net Wt/Contents (Smallest character height in inches)*		> 0.125 in.
PDP dimensions (in square inches)		< 5 sq. in.
Ratio of Statement of Identity to Logo/Largest Copy on PDP Statement of Identity (pt.) (Divided by) Largest Logo Copy (pt.)		
	Vertical PDP: N/A	Horizontal PDP: 36%



GSK Regulatory Spec Box		Verified Date: 05.20.21	
Drug Facts Info			
<i>Drug Facts</i>	N/A		N/A
<i>Drug Facts (continued)</i>	N/A		N/A
Headings	Helvetica Bold Condensed Italic		4.75 pt.
Subheadings	Helvetica Bold Condensed		4.75 pt.
Body text	Helvetica Condensed / Bold Condensed		4.75 pt.
Bullets	Helvetica Condensed		4 pt.
Bullets on same lines; end of statement separated from bulleted statement by two ems			No
Spacing of the hair lines from edge of box -i.e. Minimum of 2 spaces either side of Drug Fact Box			N/A
Tracking:	0	Horizontal Scale:	82%
Leading:	5.0 pt.	Maximum Characters/Inch:	> 39
Barlines:	N/A	Hairlines:	N/A
Primary Display Panel Info			
Size of Net Wt/Contents (Smallest character height in inches)*			> 0.125 in.
PDP dimensions (in square inches)			< 5 sq. in.
Ratio of Statement of Identity to Logo/Largest Copy on PDP			
Statement of Identity (pt.) (Divided by) Largest Logo Copy (pt.)			
Vertical PDP: N/A		Horizontal PDP: 36%	



GSK Regulatory Spec Box		Verified Date: 05.20.21
Drug Facts Info		
Drug Facts	Helvetica Bold Condensed Italic	9 pt.
Drug Facts (continued)	Helvetica Bold Condensed Italic / Condensed	8 pt.
Headings	Helvetica Bold Condensed Italic	8 pt.
Subheadings	Helvetica Bold Condensed	6 pt.
Body text	Helvetica Condensed / Bold Condensed	6 pt.
Bullets	Helvetica Condensed	5 pt.
Bullets on same lines: end of statement separated from bulleted statement by two ems		Yes
Spacing of the hair lines from edge of box - i.e. Minimum of 2 spaces either side of Drug Fact Box		No
Tracking:	-7	Horizontal Scale: 81%
Leading:	6.5 pt.	Maximum Characters/Inch: < 39
Barlines:	1.5 pt.	Hairlines: 0.5 pt.
Primary Display Panel Info		
Size of Net Wt./Contents (Smallest character height in inches)*		> 0.125 in.
PDP dimensions (in square inches)		5-25 sq. in.
Ratio of Statement of Identity to Logo/Largest Copy on PDP		
Statement of Identity (pt.) (Divided by) Largest Logo Copy (pt.)		
Vertical PDP:	N/A	Horizontal PDP: 31%



GSK Regulatory Spec Box		Verified Date: 05.19.21
Drug Facts Info		
Drug Facts	Helvetica Bold Condensed Italic	9 pt.
Drug Facts (continued)	Helvetica Bold Condensed Italic / Condensed	8 pt.
Headings	Helvetica Bold Condensed Italic	8 pt.
Subheadings	Helvetica Bold Condensed	6 pt.
Body text	Helvetica Condensed / Bold Condensed	6 pt.
Bullets	Helvetica Condensed	5 pt.
Bullets on same lines: end of statement separated from bulleted statement by two ems		Yes
Spacing of the hair lines from edge of box -i.e. Minimum of 2 spaces either side of Drug Fact Box		No
Tracking:	-9	Horizontal Scale: 83%
Leading:	6.5 pt.	Maximum Characters/Inch: < 39
Barlines:	1.5 pt.	Hairlines: 0.5 pt.
Primary Display Panel Info		
Size of Net Wt/Contents (Smallest character height in inches)*		< 0.125 in.
PDP dimensions (in square inches)		5-25 sq. in.
Ratio of Statement of Identity to Logo/Largest Copy on PDP		
Statement of Identity (pt.) (Divided by) Largest Logo Copy (pt.)		
Vertical PDP: N/A		Horizontal PDP: 29%



GSK Regulatory Spec Box		Verified Date: 05.13.21
Drug Facts Info		
Drug Facts	Helvetica Bold Condensed Italic	9 pt.
Drug Facts (continued)	Helvetica Bold Condensed Italic / Condensed	8 pt.
Headings	Helvetica Bold Condensed Italic	8 pt.
Subheadings	Helvetica Bold Condensed	6 pt.
Body text	Helvetica Condensed / Bold Condensed	6 pt.
Bullets	Helvetica Condensed	5 pt.
Bullets on same lines: end of statement separated from bulleted statement by two ems		Yes
Spacing of the hair lines from edge of box - i.e. Minimum of 2 spaces either side of Drug Fact Box		No
Tracking:	0	Horizontal Scale: 81%
Leading:	6.5 pt.	Maximum Characters/Inch: < 39
Barlines:	1.5 pt.	Hairlines: 0.5 pt.
Primary Display Panel Info		
Size of Net Wt/Contents (Smallest character height in inches)*		> 0.125 in.
PDP dimensions (in square inches)		5-25 sq. in.
Ratio of Statement of Identity to Logo/Largest Copy on PDP		
Statement of Identity (pt.) (Divided by) Largest Logo Copy (pt.)		
Vertical PDP: N/A		Horizontal PDP: 31%



GSK Regulatory Spec Box		Verified Date: 05.19.21
Drug Facts Info		
Drug Facts	Helvetica Bold Condensed Italic	9 pt.
Drug Facts (continued)	Helvetica Bold Condensed Italic / Condensed	8 pt.
Headings	Helvetica Bold Condensed Italic	8 pt.
Subheadings	Helvetica Bold Condensed	6 pt.
Body text	Helvetica Condensed / Bold Condensed	6 pt.
Bullets	Helvetica Condensed	5 pt.
Bullets on same lines; end of statement separated from bulleted statement by two ems		Yes
Spacing of the hair lines from edge of box - i.e. Minimum of 2 spaces either side of Drug Fact Box		No
Tracking:	0	Horizontal Scale: 81%
Leading:	6.5 pt.	Maximum Characters/Inch: <= 39
Barlines:	1.5 pt.	Halflines: 0.5 pt.
Primary Display Panel Info		
Size of Net Wt./Contents (Smallest character height in inches)*		> 0.125 in.
PDP dimensions (in square inches)		5-25 sq. in.
Ratio of Statement of Identity to Logo/Largest Copy on PDP		
Statement of Identity (pt.) (Divided by Largest Logo Copy (pt.)		
Vertical PDP: N/A		Horizontal PDP: 34%



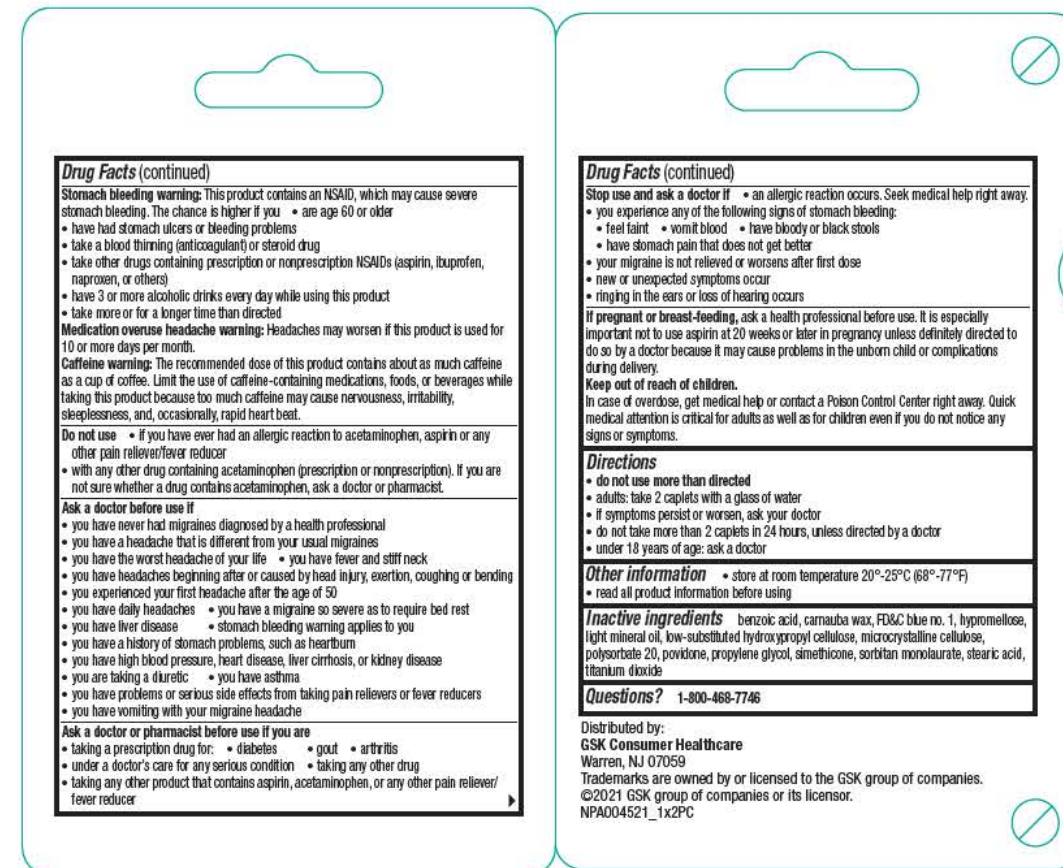
GSK Regulatory Spec Box		Verified Date: 05.21.21
Drug Facts Info		
Drug Facts	Helvetica Bold Condensed Italic	9 pt.
Drug Facts (continued)	Helvetica Bold Condensed Italic / Condensed	8 pt.
Headings	Helvetica Bold Condensed Italic	8 pt.
Subheadings	Helvetica Bold Condensed	6 pt.
Body text	Helvetica Condensed / Bold Condensed	6 pt.
Bullets	Helvetica Condensed	5 pt.
Bullets on same line; end of statement separated from bulleted statement by two ams		Yes
Spacing of the hair lines from edge of box - i.e. Minimum of 2 spaces either side of Drug Fact Box		No
Tracking:	0	Horizontal Scale: 81%
Leading:	6.5 pt.	Maximum Characters/Inch: < 39
Baseline:	1.5 pt.	Halfline: 0.5 pt.
Primary Display Panel Info		
Size of Net Wt/Contents (Smallest character height in inches)		> 0.125 in.
PDP dimensions (in square inches)		5-25 sq. in.
Ratio of Statement of Identity to Logo/Largest Copy on PDP		
Statement of Identity (s): (Divided by) Largest Copy Copy (s):		
Vertical PDP: N/A		Horizontal PDP: 36%



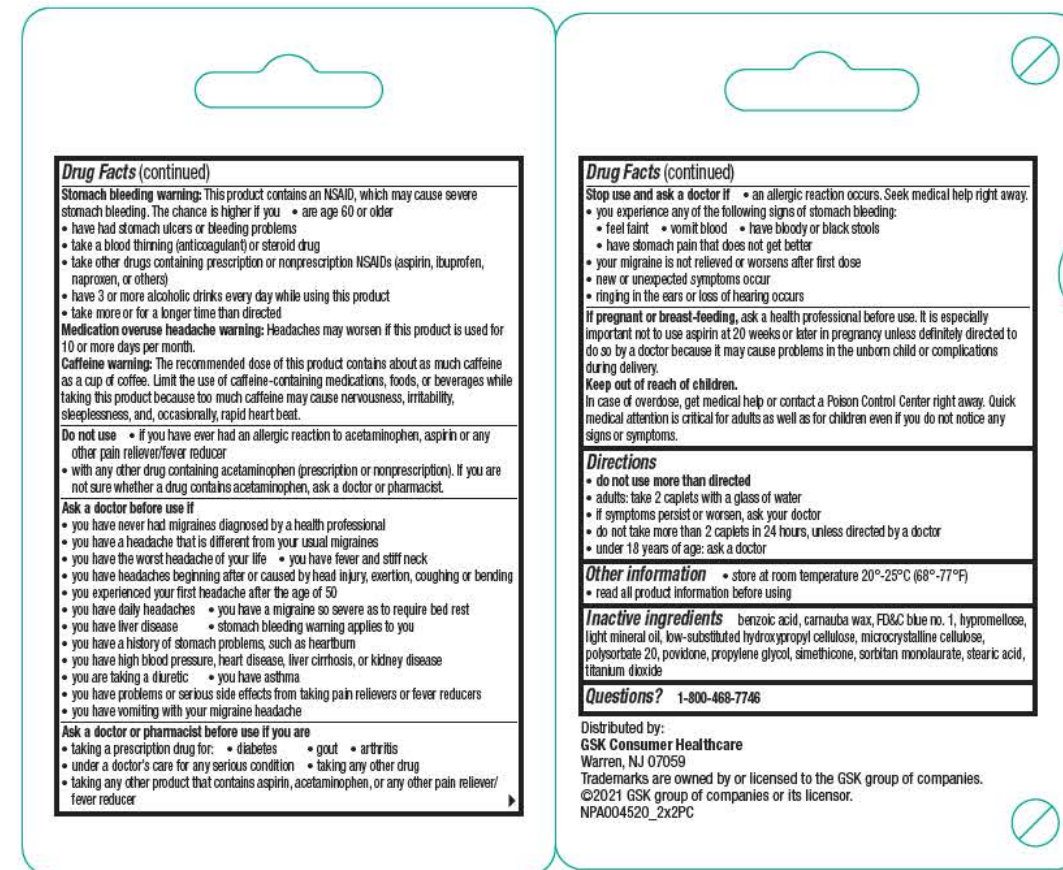
GSK Regulatory Spec Box		Verified Date: 05.21.21
Drug Facts Info		
Drug Facts	Helvetica Bold Condensed Italic	9 pt.
Drug Facts (continued)	Helvetica Bold Condensed Italic / Condensed	8 pt.
Headings	Helvetica Bold Condensed Italic	8 pt.
Subheadings	Helvetica Bold Condensed	6 pt.
Body text	Helvetica Condensed / Bold Condensed	6 pt.
Bullets	Helvetica Condensed	5 pt.
Bullets on same line; end of statement separated from bulleted statement by two ams		Yes
Spacing of the hair lines from edge of box - i.e. Minimum of 2 spaces either side of Drug Fact Box		No
Tracking:	0	Horizontal Scale: 81%
Leading:	8.5 pt.	Maximum Characters/Inch: > 39
Baseline:	1.5 pt.	Hairline: 0.5 pt.
Primary Display Panel Info		
Size of Net Wt/Contents (Smallest character height in inches)		> 0.125 in.
PDP dimensions (in square inches)		5-25 sq. in.
Ratio of Statement of Identity to Logo (Largest Copy on PDP)		
Statement of Identity (s): (divided by) Largest Copy Copy (s)		
Vertical PDP: 41%		Horizontal PDP: 37%



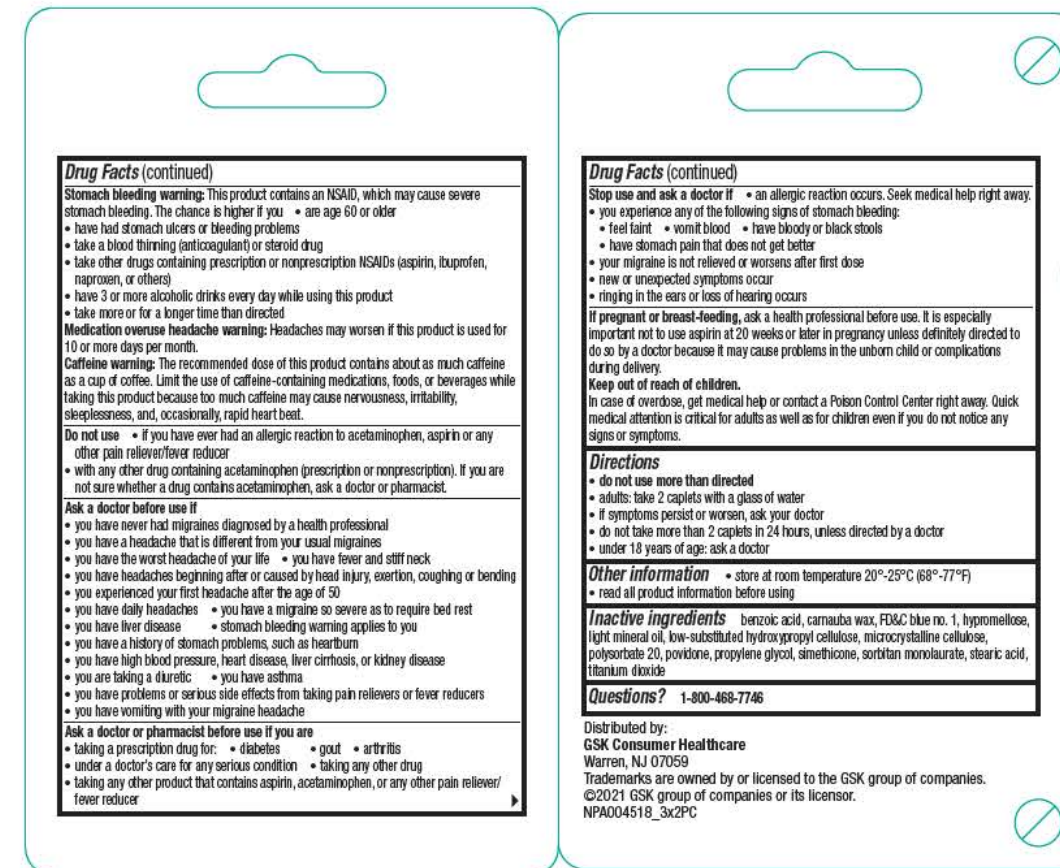
GSK Regulatory Spec Box		Verified Date: 05.19.21
Drug Facts Info		
Drug Facts	Helvetica Bold Condensed Italic	9 pt.
Drug Facts (continued)	Helvetica Bold Condensed Italic / Condensed	8 pt.
Headings	Helvetica Bold Condensed Italic	8 pt.
Subheadings	Helvetica Bold Condensed	6 pt.
Body text	Helvetica Condensed / Bold Condensed	6 pt.
Bullets	Helvetica Condensed	5 pt.
Bullets on same line; end of statement separated from bulleted statement by two ems		Yes
Spacing of the hair lines from edge of box i.e. Minimum of 2 spaces either side of Drug Fact Box		No
Tracking:	0	Horizontal Scale: 81%
Leading:	6.5 pt.	Maximum Characters/Inch: < 39
Baselines:	1.5 pt.	Hairlines: 0.5 pt.
Primary Display Panel Info		
Size of Net W/Contents (Smallest character height in inches)		> 0.125 in.
PDP dimensions (in square inches)		5-25 sq. in.
Ratio of Statement of Identity to Logo/Largest Copy on PDP		
Statement of Identity (61) (divided by Largest Logo Copy (64))		
Vertical PDP: N/A		Horizontal PDP: 31%



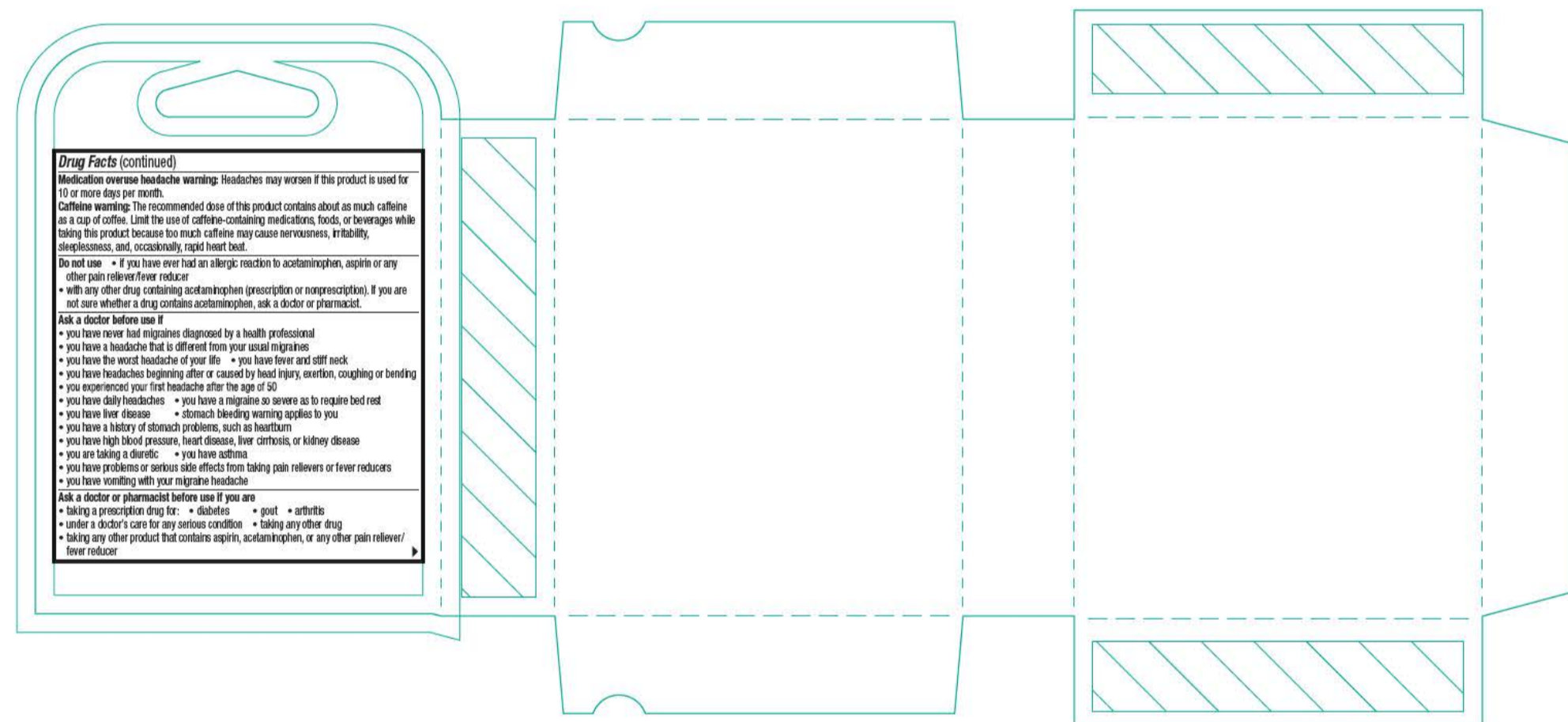
GSK Regulatory Spec Box		Verified Date: 06.29.21
Drug Facts Info		
Drug Facts	Helvetica LT Std Neue Bold Cond Oblique	9 pt.
Drug Facts (continued)	Helvetica LT Std Neue Bold Cond Oblique / Med.	8 pt.
Headings	Helvetica LT Std Neue Bold Cond Oblique	8 pt.
Subheadings	Helvetica LT Std Neue Bold Cond	6 pt.
Body text	Helvetica LT Std Neue Bold Cond / Med. Cond	6 pt.
Bullets	Helvetica LT Std Neue Roman	5 pt.
Bullets on same lines: end of statement separated from bulleted statement by two ems		Yes
Spacing of the hair lines from edge of box - i.e. Minimum of 2 spaces either side of Drug Fact Box		Yes
Tracking:	-10 to 0	Horizontal Scale: 83% - 100%
Leading:	6.5 pt.	Maximum Characters/Inch: <39
Barlines:	1.5 pt.	Hairlines: 0.5 pt.
Primary Display Panel Info		
Size of Net Wt/Contents (Smallest character height in inches)*		> 0.125 in.
PDP dimensions (in square inches)		5-25 sq. in.
Ratio of Statement of Identity to Logo/Largest Copy on PDP		
Statement of Identity (pt.) (Divided by) Largest Logo Copy (pt.)		
Vertical PDP: 37%		Horizontal PDP: N/A



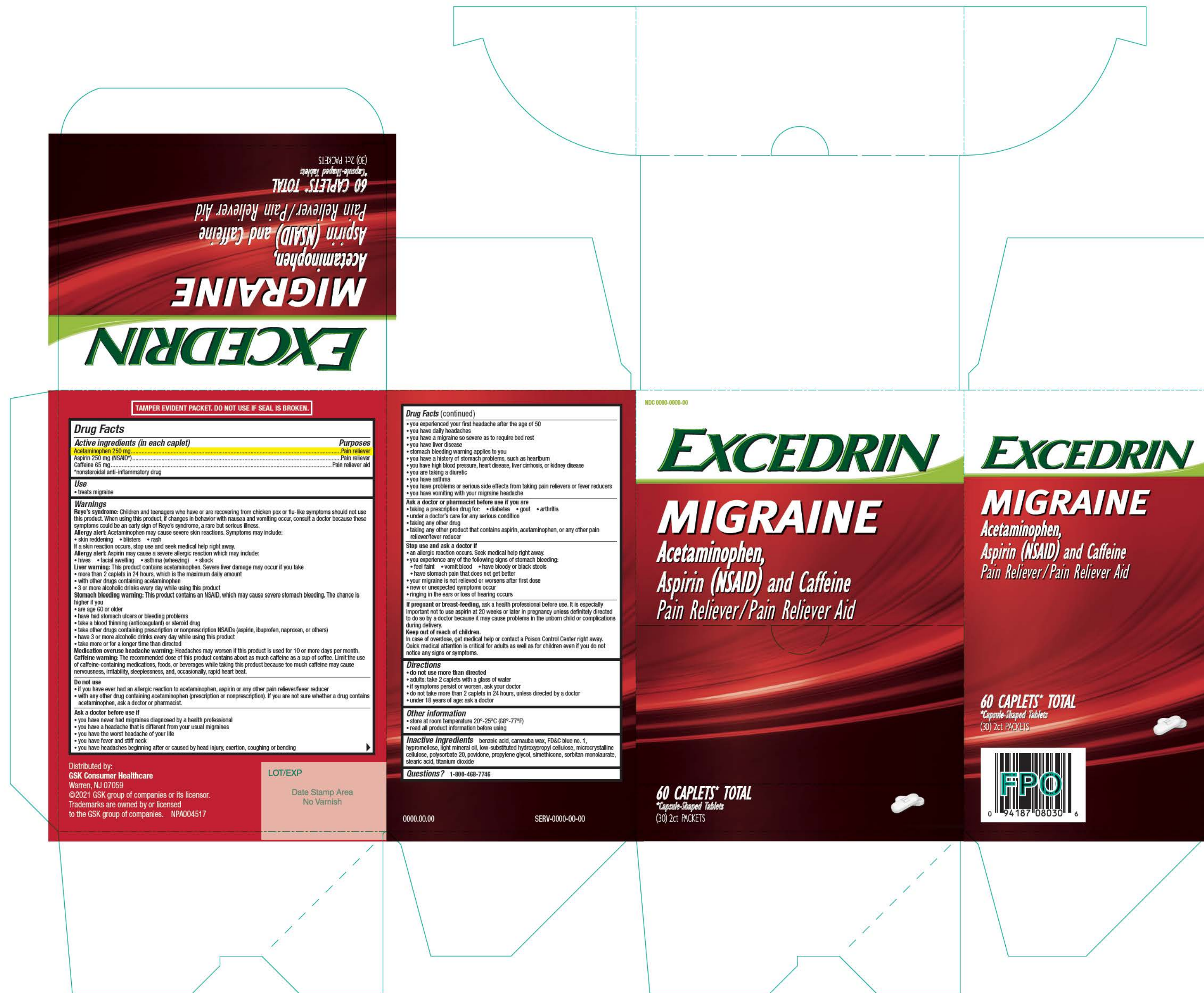
GSK Regulatory Spec Box		Verified Date: 06.29.21
Drug Facts Info		
Drug Facts	Helvetica LT Std Neue Bold Cond Oblique	9 pt.
Drug Facts (continued)	Helvetica LT Std Neue Bold Cond Oblique / Med.	8 pt.
Headings	Helvetica LT Std Neue Bold Cond Oblique	8 pt.
Subheadings	Helvetica LT Std Neue Bold Cond	6 pt.
Body text	Helvetica LT Std Neue Bold Cond / Med. Cond	6 pt.
Bullets	Helvetica LT Std Neue Roman	5 pt.
Bullets on same lines: end of statement separated from bulleted statement by two ems		Yes
Spacing of the hair lines from edge of box - i.e. Minimum of 2 spaces either side of Drug Fact Box		Yes
Tracking:	-10 to 0	Horizontal Scale: 83% - 100%
Leading:	6.5 pt.	Maximum Characters/Inch: <39
Barlines:	1.5 pt.	Hairlines: 0.5 pt.
Primary Display Panel Info		
Size of Net Wt/Contents (Smallest character height in inches)*		> 0.125 in.
PDP dimensions (in square inches)		5-25 sq. in.
Ratio of Statement of Identity to Logo/Largest Copy on PDP		
Statement of Identity (pt.) (Divided by) Largest Logo Copy (pt.)		
Vertical PDP: 37%		Horizontal PDP: N/A



GSK Regulatory Spec Box		Verified Date: 06.30.21
Drug Facts Info		
Drug Facts	Helvetica LT Std Neue Bold Cond Oblique	9 pt.
Drug Facts (continued)	Helvetica LT Std Neue Bold Cond Oblique / Med.	8 pt.
Headings	Helvetica LT Std Neue Bold Cond Oblique	8 pt.
Subheadings	Helvetica LT Std Neue Bold Cond	6 pt.
Body text	Helvetica LT Std Neue Bold Cond / Med. Cond	6 pt.
Bullets	Helvetica LT Std Neue Roman	5 pt.
Bullets on same lines: end of statement separated from bulleted statement by two ems		Yes
Spacing of the hair lines from edge of box - i.e. Minimum of 2 spaces either side of Drug Fact Box		Yes
Tracking:	-10 to 0	Horizontal Scale: 83% - 100%
Leading:	6.5 pt.	Maximum Characters/Inch: <39
Barlines:	1.5 pt.	Hairlines: 0.5 pt.
Primary Display Panel Info		
Size of Net Wt/Contents (Smallest character height in inches)*		> 0.125 in.
PDP dimensions (in square inches)		5-25 sq. in.
Ratio of Statement of Identity to Logo/Largest Copy on PDP		
Statement of Identity (pt.) (Divided by) Largest Logo Copy (pt.)		
Vertical PDP: 37%		Horizontal PDP: N/A



GSK Regulatory Spec Box		Verified Date: 06.30.21
Drug Facts Info		
Drug Facts	Helvetica Bold Condensed Italic	9 pt.
Drug Facts (continued)	Helvetica Bold Condensed Italic / Condensed	8 pt.
Headings	Helvetica Bold Condensed Italic	8 pt.
Subheadings	Helvetica Bold Condensed	6 pt.
Body text	Helvetica Condensed / Bold Condensed	6 pt.
Bullets	Helvetica Condensed	5 pt.
Bullets on same line: end of statement separated from bulleted statement by two ems		Yes
Spacing of the hairlines from edge of box-Js, Minimum of 2 spaces either side of Drug Fact Box		Yes
Tracking:	0	Horizontal Scale: 83%
Leading:	6.5 pt.	Maximum Characters/Inch: < 39
Barlines:	1.5 pt.	Hairlines: 0.5 pt.
Primary Display Panel Info		
Size of Net Wt./Contents (Smallest character height in inches)		> 0.125 in.
PDP dimensions (in square inches)		5-25 sq. in.
Ratio of Statement of Identity to Logo/Largest Copy on PDP		
Statement of Identity (pt.) (Divided by) Largest Logo Copy (pt.)		
Vertical PDP: N/A		Horizontal PDP: 34%



TAMPER EVIDENT PACKET. DO NOT USE IF SEAL IS BROKEN.

EXCEDRIN
MIGRAINE
Acetaminophen,
Aspirin (NSAID) and Caffeine
Pain Reliever/Pain Reliever Aid
60 CAPLETS* TOTAL
*Caplet-shaped Tablets
(30) 2ct PACKETS

Drug Facts

Active Ingredients (in each caplet)	Purposes
Acetaminophen 325 mg	Pain reliever
Aspirin 250 mg (NSAID)	Pain reliever
Caffeine 65 mg	Pain reliever aid
*nonsteroidal anti-inflammatory drug	

Use

- treats migraine

Warnings

Reye's syndrome: Children and teenagers who have or are recovering from chicken pox or flu-like symptoms should not use this product. When using this product, it changes in behavior with nausea and vomiting occur, consult a doctor because these symptoms could be an early sign of Reye's syndrome, a rare but serious illness.

Allergy alert: Acetaminophen may cause severe skin reactions. Symptoms may include:

- skin redness
- hives
- itching
- swelling
- blistering
- skin peeling

If a skin reaction occurs, stop use and seek medical help right away.

Allergy alert: Aspirin may cause a severe allergic reaction which may include:

- hives
- facial swelling
- asthma (wheezing)
- shock

Liver warning: This product contains acetaminophen. Severe liver damage may occur if you take:

- more than 2 caplets in 24 hours, which is the maximum daily amount
- with other drugs containing acetaminophen
- 3 or more alcoholic drinks every day while using this product

Stomach bleeding warning: This product contains an NSAID, which may cause severe stomach bleeding. The chance is higher if you:

- are age 60 or older
- have had stomach ulcers or bleeding problems
- take a blood thinning (anticoagulant) or steroid drug
- take other drugs containing prescription or nonprescription NSAIDs (aspirin, ibuprofen, naproxen, or others)
- have 2 or more alcoholic drinks every day while using this product
- take more or for a longer time than directed

Medication overdose headache warning: Headaches may worsen if this product is used for 10 or more days per month.

Caffeine warning: The recommended dose of this product contains about as much caffeine as a cup of coffee. Limit the use of caffeine-containing medications, foods, or beverages while taking this product because too much caffeine may cause nervousness, irritability, sleeplessness, and, occasionally, rapid heart beat.

Do not use

- if you have ever had an allergic reaction to acetaminophen, aspirin or any other pain reliever/fever reducer
- with any other drug containing acetaminophen (prescription or nonprescription), if you are not sure whether a drug contains acetaminophen, ask a doctor or pharmacist.

Ask a doctor before use if

- you have never had migraines diagnosed by a health professional
- you have a headache that is different from your usual migraines
- you have the worst headache of your life
- you have fever and stiff neck
- you have headaches beginning after or caused by head injury, exertion, coughing or bending

Distributed by:
GSK Consumer Healthcare
Warren, NJ 07059
©2021 GSK group of companies or its licensor.
Trademarks are owned by or licensed
to the GSK group of companies. NPA0004517

LOT/EXP
Date Stamp Area
No Varnish

Drug Facts (continued)

- you experienced your first headache after the age of 50
- you have daily headaches
- you have a migraine so severe as to require bed rest
- you have liver disease
- stomach bleeding warning applies to you
- you have a history of stomach problems, such as heartburn
- you have high blood pressure, heart disease, liver cirrhosis, or kidney disease
- you are taking a diuretic
- you have asthma
- you have problems or serious side effects from taking pain relievers or fever reducers
- you have vomiting with your migraine headache

Ask a doctor or pharmacist before use if you are:

- taking a prescription drug for: • diabetes • gout • arthritis
- under a doctor's care for any serious condition
- taking any other drug
- taking any other product that contains aspirin, acetaminophen, or any other pain reliever/fever reducer

Stop use and ask a doctor if

- an allergic reaction occurs. Seek medical help right away.
- you experience any of the following signs of stomach bleeding:
 - red stool
 - event blood
 - black stools
- have stomach pain that does not get better
- your migraine is not relieved or worsens after first dose
- new or unexpected symptoms occur
- ringing in the ears or loss of hearing occurs

If pregnant or breast-feeding, ask a health professional before use. It is especially important not to use aspirin at 20 weeks or later in pregnancy unless definitely directed to do so by a doctor because it may cause problems in the unborn child or complications during delivery.

Keep out of reach of children.
In case of overdose, get medical help or contact a Poison Control Center right away. Quick medical attention is critical for adults as well as for children even if you do not notice any signs or symptoms.

Directions

- do not use more than directed
- adults: take 2 caplets with a glass of water
- if symptoms persist or worsen, ask your doctor
- do not take more than 2 caplets in 24 hours, unless directed by a doctor
- under 18 years of age: ask a doctor

Other information

- store at room temperature 20°-25°C (68°-77°F)
- read all product information before using

Inactive ingredients benzoic acid, carmelum wax, FD&C blue no. 1, hypromellose, light mineral oil, low-substituted hydroxypropyl cellulose, hydroxypropyl cellulose, polyacrylate 20, polyethylene glycol, polyethylene glycol, simethicone, sorbitan monooleate, stearic acid, titanium dioxide

Questions? 1-800-488-7746

0000.00.00 SERV-0000-00-00

EXCEDRIN
MIGRAINE
Acetaminophen,
Aspirin (NSAID) and Caffeine
Pain Reliever/Pain Reliever Aid
60 CAPLETS* TOTAL
*Caplet-shaped Tablets
(30) 2ct PACKETS

EXCEDRIN
MIGRAINE
Acetaminophen,
Aspirin (NSAID) and Caffeine
Pain Reliever/Pain Reliever Aid
60 CAPLETS* TOTAL
*Caplet-shaped Tablets
(30) 2ct PACKETS

FPO
0 74187 08030 6

GSK Regulatory Spec Box Verified Date: 07.02.21

Drug Facts Info		
Drug Facts	Helvetica Bold Condensed Italic	11 pt.
Drug Facts (continued)	Helvetica Bold Condensed Italic / Condensed	8 pt.
Headings	Helvetica Bold Condensed Italic	8 pt.
Subheadings	Helvetica Bold Condensed	6 pt.
Body text	Helvetica Condensed / Bold Condensed	6 pt.
Bullets	Helvetica Condensed	5 pt.
Bullets on same line: end of statement separated from bulleted statement by two ems		Yes
Spacing of the hair lines from edge of box-in. Minimum of 2 spaces either side of Drug Fact Box		Yes
Tracking:	0 Horizontal Scale:	100%
Leading:	6.5 pt. Maximum Characters/Inch:	< 39
Barlines:	1.5 pt. Hairlines:	0.5 pt.
Primary Display Panel Info		
Size of Net Wt./Contents (Smallest character height in inches)*		> 0.125 in.
PDP dimensions (in square inches)		5-25 sq. in.
Ratio of Statement of Identity to Logo/Largest Copy on PDP		
Statement of Identity (pt.) (Divided by) Largest Logo Copy (pt.)		
Vertical PDP: 43%	Horizontal PDP: 43%	

NPA004079

DO NOT USE IF INNER FOIL SEAL, IMPRINTED WITH "SEALED FOR YOUR PROTECTION" IS BROKEN OR MISSING

EXCEDRIN
MIGRAINE
20 GELTABS™
Acetaminophen, Aspirin (ASA) and Caffeine
Pain Reliever/First Aid Remedy

READ ALL PRODUCT INFORMATION BEFORE USING. KEEP BOX FOR INFORMATION IN FUTURE USE.

Active Ingredients **Purposes**
(in each tablet)

Acetaminophen 250 mg Pain reliever
Aspirin 250 mg (NSAID)* Pain reliever
Caffeine 65 mg Pain reliever and
*nonsteroidal anti-inflammatory drug
Dose • Treats migraine
Warnings
Reye's syndrome: Children and teenagers who have or are recovering from chicken pox or flu-like symptoms should not use this product. When using this product, if changes in behavior with nausea and vomiting occur, consult a doctor because these symptoms could be an early sign of Reye's syndrome, a rare but serious illness. Allergy alert: Acetaminophen may cause severe skin reactions. Symptoms may include: • skin redness • blisters • rash. If a skin reaction occurs, stop use and seek medical help right away. Allergy alert: Aspirin may cause a severe allergic

PEEL FOR ADDITIONAL LABELING

ask a doctor if an allergic reaction occurs. Seek medical help right away. If pregnant or breast-feeding, ask a health professional before use. It is especially important not to use aspirin at 20 weeks or later in pregnancy unless definitely directed to do so by a doctor because it may cause problems in the unborn child or complications during delivery. Keep out of reach of children. In case of overdose, get medical help or contact a Poison Control Center right away. Quick medical attention is critical for adults as well as for children even if you do not notice any signs or symptoms.

Directions • do not use more than directed • adults: take 2 tablets with a glass of water • if symptoms persist or worsen, ask your doctor • do not take more than 2 tablets in 24 hours, unless directed by a doctor • under 18 years of age: ask a doctor **Other information** • store at controlled room temperature 20°-25°C (68°-77°F). Once the bottle is opened, discard after 9 months. Do not use beyond expiry date. Protect from moisture. • close cap tightly after use **Questions? 1-800-468-7746**
Dist. by: GSK Consumer Healthcare
Warren, NJ 07059
Trademarks owned or licensed by GSK.
C2021 GSK or licensor.
NPA004079

reaction which may include: • hives • facial swelling • asthma (wheezing) • shock **Liver warning:** This product contains acetaminophen. Severe liver damage may occur if you take • more than 2 tablets in 24 hours, which is the maximum daily amount • with other drugs containing acetaminophen • 3 or more alcoholic drinks every day while using this product **Stomach bleeding warning:** This product contains an NSAID, which may cause severe stomach bleeding. The chance is higher if you • are age 60 or older • have had stomach ulcers or bleeding problems • take a blood thinning (anticoagulant) or steroid drug • take other drugs containing prescription or nonprescription NSAIDs (aspirin, ibuprofen, naproxen, or others) • have 3 or more alcoholic drinks every day while using this product • take more or for a longer time than directed Do not use • if you have ever had an allergic reaction to acetaminophen, aspirin or any other pain reliever/fever reducer • with any other drug containing acetaminophen (prescription or nonprescription). If you are not sure whether a drug contains acetaminophen, ask a doctor or pharmacist. Stop use and

DRUG FACT FORMATTING - ABBREVIATED		
LABELING TEXT	TYPE SIZE	TYPE STYLE
HEADINGS	5.5 pt	Helvetica Cond Bold Old
SUBHEADS	5.5 pt	Helvetica Cond Bold
BODY TEXT	5.5 pt	Helvetica Cond
TRACKING	0	
CONDENSATION	83%	
LEADING	6 pt	
BULLETS	5.5 pt	



GSK Regulatory Spec Box		Verified Date: 04.27.21
Drug Facts Info		
Drug Facts	Helvetica Bold Condensed <i>Italic</i>	9 pt.
Drug Facts (continued)	Helvetica Bold Condensed <i>Italic</i> / Condensed	8 pt.
Headings	Helvetica Bold Condensed <i>Italic</i>	8 pt.
Subheadings	Helvetica Bold Condensed	6 pt.
Body text	Helvetica Condensed / Bold Condensed	6 pt.
Bullets	Helvetica Condensed	5 pt.
Bullets on same lines: end of statement separated from bulleted statement by two ems		Yes
Spacing of the hair lines from edge of box--i.e. Minimum of 2 spaces either side of Drug Fact Box		No
Tracking:	-7	Horizontal Scale: 83%
Leading:	6.3 pt.	Maximum Characters/Inch: > 39
Barlines:	1.5 pt.	Hairlines: 0.5 pt.
Primary Display Panel Info		
Size of Net Wt/Contents (Smallest character height in inches)*		> 0.125 in.
PDP dimensions (in square inches)		5-25 sq. in.
Ratio of Statement of Identity to Logo/Largest Copy on PDP Statement of Identity (pt.) (Divided by) Largest Logo Copy (pt.)		Vertical PDP: N/A Horizontal PDP: 31%



GSK Regulatory Spec Box		Verified Date: 05.13.21
Drug Facts Info		
Drug Facts	Helvetica Bold Condensed Italic	N/A
Drug Facts (continued)	Helvetica Bold Condensed Italic / Condensed	N/A
Headings	Helvetica Bold Condensed Italic	4.75 pt.
Subheadings	Helvetica Bold Condensed	4.75 pt.
Body text	Helvetica Condensed / Bold Condensed	4.75 pt.
Bullets	Helvetica Condensed	4 pt.
Bullets on same lines: end of statement separated from bulleted statement by two ems		Yes
Spacing of the hair lines from edge of box- i.e. Minimum of 2 spaces either side of Drug Fact Box		N/A
Tracking:	0	Horizontal Scale: 85%
Leading:	4.9 pt.	Maximum Characters/Inch: < 39
Barlines:	N/A	Hairlines: N/A
Primary Display Panel Info		
Size of Net Wt/Contents (Smallest character height in inches)*		> 0.125 in.
PDP dimensions (in square inches)		< 5 sq. in.
Ratio of Statement of Identity to Logo/Largest Copy on PDP		
Statement of Identity (pt.) (Divided by) Largest Logo Copy (pt.)	Vertical PDP: 42%	Horizontal PDP: N/A



GSK Regulatory Spec Box		Verified Date: 05.12.21
Drug Facts Info		
Drug Facts	Helvetica Bold Condensed Italic	9 pt.
Drug Facts (continued)	Helvetica Bold Condensed Italic / Condensed	8 pt.
Headings	Helvetica Bold Condensed Italic	8 pt.
Subheadings	Helvetica Bold Condensed	6 pt.
Body text	Helvetica Condensed / Bold Condensed	6 pt.
Bullets	Helvetica Condensed	5 pt.
Bullets on same lines: end of statement separated from bulleted statement by two ems		Yes
Spacing of the hair lines from edge of box-La. Minimum of 2 spaces either side of Drug Fact Box		Yes
Tracking:	0	Horizontal Scale: 83%
Leading:	6.5 pt.	Maximum Characters/Inch: < 39
Barlines:	1.5 pt.	Hairlines: 0.5 pt.
Primary Display Panel Info		
Size of Net Wt/Contents (Smallest character height in inches)*		> 0.125 in.
PDP dimensions (in square inches)		5-25 sq. in.
Ratio of Statement of Identity to Logo/Largest Copy on PDP		
Statement of Identity (pt.) (Divided by) Largest Logo Copy (pt.)		
Vertical PDP: N/A		Horizontal PDP: 35%

This is a representation of an electronic record that was signed electronically. Following this are manifestations of any and all electronic signatures for this electronic record.

/s/

VALERIE S PRATT
11/03/2021 04:42:05 PM