

NDA 20-972/S-16

Page 3

SUSTIVA[®]

(efavirenz) capsules and tablets

Rx only

DESCRIPTION

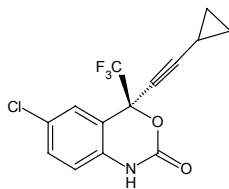
SUSTIVA (efavirenz) is an HIV-1 specific, non-nucleoside, reverse transcriptase inhibitor (NNRTI).

Capsules: SUSTIVA is available as capsules for oral administration containing either 50 mg, 100 mg, or 200 mg of efavirenz and the following inactive ingredients: lactose monohydrate, magnesium stearate, sodium lauryl sulfate, and sodium starch glycolate. The capsule shell contains the following inactive ingredients and dyes: gelatin, sodium lauryl sulfate, titanium dioxide and/or yellow iron oxide. The capsule shells may also contain silicon dioxide. The capsules are printed with ink containing carmine 40 blue, FD&C Blue No. 2 and titanium dioxide.

Tablets: SUSTIVA is available as film-coated tablets for oral administration containing 600 mg of efavirenz and the following inactive ingredients: croscarmellose sodium, hydroxypropyl cellulose, lactose monohydrate, magnesium stearate, microcrystalline cellulose, and sodium lauryl sulfate. The film coating contains Opadry[®] Yellow and Opadry[®] Clear. The tablets are polished with carnauba wax and printed with purple ink, Opacode[®] WB.

Efavirenz is chemically described as (S) -6- chloro-4-(cyclopropylethynyl)-1,4-dihydro-4-(trifluoromethyl)-2H-3,1-benzoxazin-2-one.

Its empirical formula is C₁₄H₉ClF₃NO₂ and its structural formula is:



Efavirenz is a white to slightly pink crystalline powder with a molecular mass of 315.68. It is practically insoluble in water (<10 µg/mL).

NDA 20-972/S-16

Page 4

MICROBIOLOGY

Mechanism of Action: Efavirenz is a non-nucleoside reverse transcriptase (RT) inhibitor of human immunodeficiency virus type 1 (HIV-1). Efavirenz activity is mediated predominantly by non-competitive inhibition of HIV-1 RT. HIV-2 RT and human cellular DNA polymerases alpha, beta, gamma, and delta are not inhibited by efavirenz.

***In vitro* HIV Susceptibility:** The clinical significance of *in vitro* susceptibility of HIV-1 to efavirenz has not been established. The *in vitro* antiviral activity of efavirenz was assessed in lymphoblastoid cell lines, peripheral blood mononuclear cells (PBMCs) and macrophage/monocyte cultures. The 90-95% inhibitory concentration (IC₉₀₋₉₅) of efavirenz for wild type laboratory adapted strains and clinical isolates ranged from 1.7 to 25 nM. Efavirenz demonstrated synergistic activity against HIV-1 in cell culture when combined with zidovudine (ZDV), didanosine, or indinavir (IDV).

Resistance: HIV-1 isolates with reduced susceptibility to efavirenz (>380-fold increase in IC₉₀) compared to baseline can emerge *in vitro*. Phenotypic (N=26) changes in evaluable HIV-1 isolates and genotypic (N=104) changes in plasma virus from selected patients treated with efavirenz in combination with IDV, or with ZDV plus lamivudine were monitored. One or more RT mutations at amino acid positions 98, 100, 101, 103, 106, 108, 188, 190 and 225, were observed in 102 of 104 patients with a frequency of at least 9% compared to baseline. The mutation at RT amino acid position 103 (lysine to asparagine) was the most frequently observed (≥90%). A mean loss in susceptibility (IC₉₀) to efavirenz of 47-fold was observed in 26 clinical isolates. Five clinical isolates were evaluated for both genotypic and phenotypic changes from baseline. Decreases in efavirenz susceptibility (range from 9 to >312-fold increase in IC₉₀) were observed for these isolates *in vitro* compared to baseline. All 5 isolates possessed at least one of the efavirenz-associated RT mutations. The clinical relevance of phenotypic and genotypic changes associated with efavirenz therapy is under evaluation.

Cross-Resistance: Rapid emergence of HIV-1 strains that are cross-resistant to non-nucleoside RT inhibitors has been observed *in vitro*. Thirteen clinical isolates previously characterized as efavirenz-resistant were also phenotypically resistant to nevirapine and delavirdine *in vitro* compared to baseline. Clinically derived ZDV-resistant HIV-1 isolates tested *in vitro* retained susceptibility to efavirenz. Cross-resistance between efavirenz and HIV protease inhibitors is unlikely because of the different enzyme targets involved.

NDA 20-972/S-16

Page 5

CLINICAL PHARMACOLOGY

Pharmacokinetics

Absorption: Peak efavirenz plasma concentrations of 1.6-9.1 μM were attained by 5 hours following single oral doses of 100 mg to 1600 mg administered to uninfected volunteers. Dose-related increases in C_{max} and AUC were seen for doses up to 1600 mg; the increases were less than proportional suggesting diminished absorption at higher doses.

In HIV-infected patients at steady-state, mean C_{max} , mean C_{min} , and mean AUC were dose proportional following 200 mg, 400 mg, and 600 mg daily doses. Time-to-peak plasma concentrations were approximately 3-5 hours and steady-state plasma concentrations were reached in 6-10 days. In 35 patients receiving SUSTIVA 600 mg once daily, steady-state C_{max} was $12.9 \pm 3.7 \mu\text{M}$ (mean \pm S.D.), steady-state C_{min} was $5.6 \pm 3.2 \mu\text{M}$, and AUC was $184 \pm 73 \mu\text{M}\cdot\text{h}$.

Effect of Food on Oral Absorption:

Capsules -- Administration of a single 600 mg dose of efavirenz capsules with a high fat/high caloric meal (894 kcal, 54 g fat, 54% calories from fat) or a reduced fat/normal caloric meal (440 kcal, 2 g fat, 4% calories from fat) was associated with a mean increase of 22% and 17% in efavirenz AUC_{∞} and a mean increase of 39% and 51% in efavirenz C_{max} , respectively, relative to the exposures achieved when given under fasted conditions. (See **DOSAGE AND ADMINISTRATION** and **PRECAUTIONS; Information for Patients**.)

Tablets -- Administration of a single 600 mg efavirenz tablet with a high fat/high caloric meal (approximately 1000 kcal, 500-600 kcal from fat) was associated with a 28% increase in mean AUC_{∞} of efavirenz and a 79% increase in mean C_{max} of efavirenz relative to the exposures achieved under fasted conditions. (See **DOSAGE AND ADMINISTRATION** and **PRECAUTIONS; Information for Patients**.)

Distribution: Efavirenz is highly bound (approximately 99.5-99.75%) to human plasma proteins, predominantly albumin. In HIV-1 infected patients (N=9) who received SUSTIVA 200 to 600 mg once daily for at least one month, cerebrospinal fluid concentrations ranged from 0.26 to 1.19% (mean 0.69%) of the corresponding plasma concentration. This proportion is approximately 3-fold higher than the non-protein-bound (free) fraction of efavirenz in plasma.

Metabolism: Studies in humans and *in vitro* studies using human liver microsomes have demonstrated that efavirenz is principally metabolized by the cytochrome P450 system to hydroxylated metabolites with subsequent glucuronidation of these hydroxylated metabolites. These metabolites are

NDA 20-972/S-16
Page 6

essentially inactive against HIV-1. The *in vitro* studies suggest that CYP3A4 and CYP2B6 are the major isozymes responsible for efavirenz metabolism.

Efavirenz has been shown to induce P450 enzymes, resulting in the induction of its own metabolism. Multiple doses of 200-400 mg per day for 10 days resulted in a lower than predicted extent of accumulation (22-42% lower) and a shorter terminal half-life of 40-55 hours (single dose half-life 52-76 hours).

Elimination: Efavirenz has a terminal half-life of 52-76 hours after single doses and 40-55 hours after multiple doses. A one-month mass balance/excretion study was conducted using 400 mg per day with a ¹⁴C-labeled dose administered on Day 8. Approximately 14-34% of the radiolabel was recovered in the urine and 16-61% was recovered in the feces. Nearly all of the urinary excretion of the radiolabeled drug was in the form of metabolites. Efavirenz accounted for the majority of the total radioactivity measured in feces.

Special Populations

Hepatic Impairment: The pharmacokinetics of efavirenz have not been adequately studied in patients with hepatic impairment (see **PRECAUTIONS; General**).

Renal Impairment: The pharmacokinetics of efavirenz have not been studied in patients with renal insufficiency; however, less than 1% of efavirenz is excreted unchanged in the urine, so the impact of renal impairment on efavirenz elimination should be minimal.

Gender and Race: The pharmacokinetics of efavirenz in patients appear to be similar between men and women and among the racial groups studied.

Geriatric: see **PRECAUTIONS; Geriatric Use**

Pediatrics: see **PRECAUTIONS; Pediatric Use**

Drug Interactions (see also **CONTRAINDICATIONS** and **PRECAUTIONS; Drug Interactions**)

Efavirenz has been shown *in vivo* to cause hepatic enzyme induction, thus increasing the biotransformation of some drugs metabolized by CYP3A4. *In vitro* studies have shown that efavirenz inhibited P450 isozymes 2C9, 2C19, and 3A4 with K_i values (8.5-17 μ M) in the range of observed efavirenz plasma concentrations. In *in vitro* studies, efavirenz did not inhibit CYP2E1 and inhibited CYP2D6 and CYP1A2 (K_i values 82-160 μ M) only at concentrations well above those achieved clinically. The effects on CYP3A4 activity are expected to be similar between 200 mg, 400 mg and 600 mg doses of efavirenz. Coadministration of efavirenz with drugs primarily metabolized by 2C9,

NDA 20-972/S-16

Page 7

2C19 and 3A4 isozymes may result in altered plasma concentrations of the coadministered drug. Drugs which induce CYP3A4 activity would be expected to increase the clearance of efavirenz resulting in lowered plasma concentrations.

Drug interaction studies were performed with efavirenz and other drugs likely to be coadministered or drugs commonly used as probes for pharmacokinetic interaction. The effects of coadministration of efavirenz on the AUC and C_{max} are summarized in Table 1 (effect of efavirenz on other drugs) and Table 2 (effect of other drugs on efavirenz). For information regarding clinical recommendations see **PRECAUTIONS; Drug Interactions**.

Table 1: Effect of Efavirenz on Coadministered Drug Plasma C_{max} and AUC

Coadministered Drug:	Dose	Efavirenz Dose	Number of Subjects	Coadministered Drug (% change)	
				C _{max} (mean [90% CI])	AUC (mean [90% CI])
Indinavir	800 mg q8h x 14 days	200 mg x 14 days	17	↓ (16%) [-10-35%]	↓ (31%) [13-45%]
Nelfinavir	750 mg q8h x 7 days	600 mg x 7 days	10	↑ (21%) [10-33%]	↑ (20%) [8-34%]
Metabolite AG-1402				↓ (40%) [30-48%]	↓ (37%) [25-48%]
Ritonavir	500 mg q12h x 8 days After AM dose	600 mg x 10 days	11	↑ (24%) [12-38%]	↑ (18%) [6-33%]
	After PM dose			↔	↔
Saquinavir SGC*	1200 mg q8h x 10 days	600 mg x 10 days	12	↓ (50%) [28-66%]	↓ (62%) [45-74%]
Lamivudine	150 mg q12h x 14 days	600 mg x 14 days	9	↔	↔
Zidovudine	300 mg q12h x 14 days	600 mg x 14 days	9	↔	↔
Azithromycin	600 mg single dose	400 mg x 7 days	14	↑ (22%) [4-42%]	↔
Clarithromycin	500 mg q12h x 7 days	400 mg x 7 days	11	↓ (26%) [15-35%]	↓ (39%) [30-46%]
14-OH metabolite				↑ (49%) [32-69%]	↑ (34%) [18-53%]
Fluconazole	200 mg x 7 days	400 mg x 7 days	10	↔	↔
Rifabutin	300 mg qd x 14 days	600 mg x 14 days	9	↓ (32%) [15-46%]	↓ (38%) [28-47%]
Cetirizine	10 mg single dose	600 mg x 10 days	11	↓ (24%) [18-30%]	↔
Ethinyl estradiol	50 µg single dose	400 mg x 10 days	13	↔	↑ (37%) [25-51%]
Lorazepam	2 mg single dose	600 mg x 10 days	12	↑ (16%) [2-32%]	↑ (7%) [1-14%]

NDA 20-972/S-16

Page 8

Table 1: Effect of Efavirenz on Coadministered Drug Plasma C_{max} and AUC

Coadministered Drug:	Dose	Efavirenz Dose	Number of Subjects	Coadministered Drug (% change)	
				C _{max} (mean [90% CI])	AUC (mean [90% CI])
Methadone	Stable maintenance 35-100 mg daily	600 mg x 14-21 days	11	↓ (45%) [25-59%]	↓ (52%) [33-66%]

↑ Indicates increase ↓ Indicates decrease ↔ Indicates no change

*Soft Gelatin Capsule

NDA 20-972/S-16

Page 9

Table 2: Effect of Coadministered Drug on Efavirenz Plasma C_{max} and AUC

Coadministered Drug:	Dose	Efavirenz Dose	Number of Subjects	Efavirenz (% change)	
				C _{max} (mean [90% CI])	AUC (mean [90% CI])
Indinavir	800 mg q8h x 14 days	200 mg x 14 days	11	↔	↔
Nelfinavir	750 mg q8h x 7 days	600 mg x 7 days	10	↔	↔
Ritonavir	500 mg q12h x 8 days	600 mg x 10 days	9	↑ (14%) [4-26%]	↑ (21%) [10-34%]
Saquinavir SGC*	1200 mg q8h x 10 days	600 mg x 10 days	13	↓ (13%) [5-20%]	↓ (12%) [4-19%]
Azithromycin	600 mg single dose	400 mg x 7 days	14	↔	↔
Clarithromycin	500 mg q12h x 7 days	400 mg x 7 days	12	↑ (11%) [3-19%]	↔
Fluconazole	200 mg x 7 days	400 mg x 7 days	10	↔	↑ (16%) [6-26%]
Rifabutin	300 mg qd x 14 days	600 mg x 14 days	11	↔	↔
Rifampin	600 mg x 7 days	600 mg x 7 days	12	↓ (20%) [11-28%]	↓ (26%) [15-36%]
Aluminum hydroxide 400 mg, magnesium hydroxide 400 mg, plus simethicone 40 mg	30 mL single dose	400 mg single dose	17	↔	↔
Cetirizine	10 mg single dose	600 mg x 10 days	11	↔	↓ (8%) [4-11%]
Ethinyl estradiol	50 µg single dose	400 mg x 10 days	13	↔	↔
Famotidine	40 mg single dose	400 mg single dose	17	↔	↔

↑ Indicates increase ↓ Indicates decrease ↔ Indicates no change

*Soft Gelatin Capsule

INDICATIONS AND USAGE

SUSTIVA (efavirenz) in combination with other antiretroviral agents is indicated for the treatment of HIV-1 infection. This indication is based on two clinical trials of at least one year duration that demonstrated prolonged suppression of HIV-RNA.

NDA 20-972/S-16

Page 10

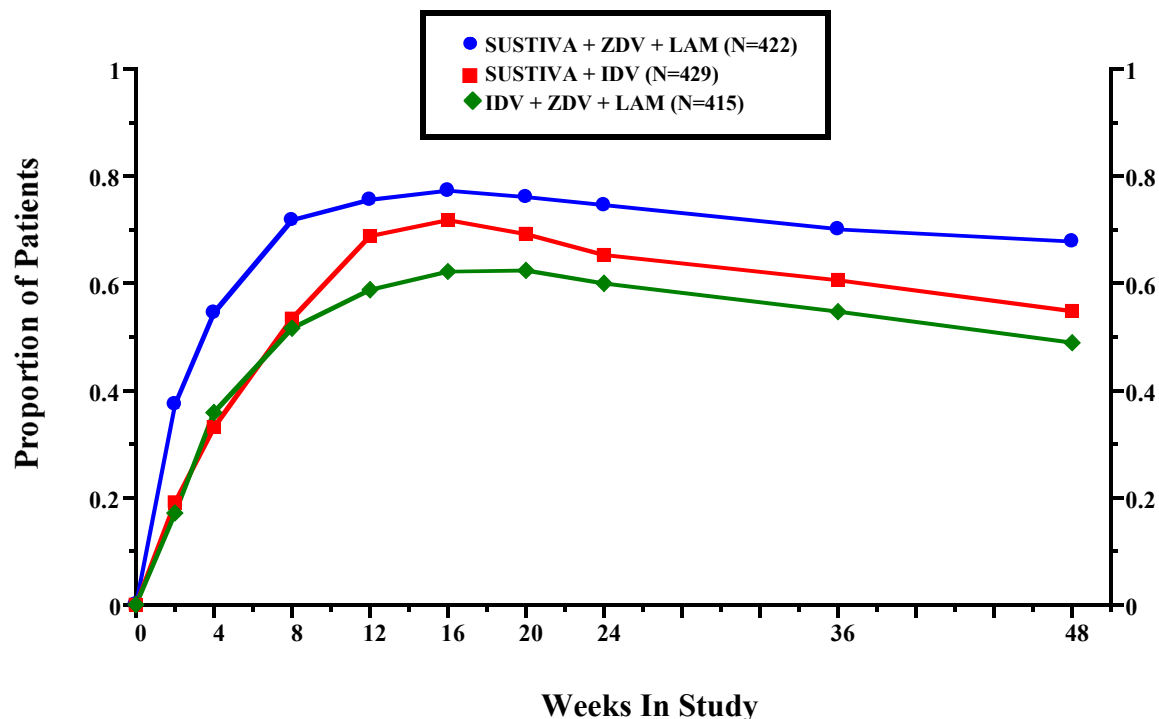
Description of Studies

In the two principal studies described below (Study 006 and ACTG 364), the response was measured as the time to treatment failure (TTF). Plasma HIV-RNA levels were quantified using the AMPLICOR HIV-1 MONITOR[®] (assay limit 400 copies/mL in Study 006 and 500 copies/mL in ACTG 364).

Study 006, an ongoing, randomized, open-label trial, compares SUSTIVA (600 mg once daily) + indinavir (IDV, 1000 mg q8h) or SUSTIVA (600 mg once daily) + zidovudine (ZDV, 300 mg q12h) + lamivudine (LAM, 150 mg q12h) with indinavir (800 mg q8h) + zidovudine (300 mg q12h) + lamivudine (150 mg q12h). Twelve-hundred sixty-six patients (mean age 36.5 years [range 18-81], 60% Caucasian, 83% male) were enrolled. All patients were efavirenz, lamivudine, NNRTI-, and PI-naive at study entry. The mean baseline CD4 cell count was 341 cells/mm³ and the mean baseline HIV-RNA level was 60,250 copies/mL. There was no significant difference in mean CD4 cell count among the treatment groups; the overall mean increase was approximately 200 cells at 48 weeks among patients who continued on study regimens. Treatment response and outcomes through 48 weeks are shown in Figure 1 and Table 3, respectively.

Figure 1

Study 006: Treatment Response



- Proportion of patients at each time point who have HIV-RNA <400 copies, are on their original study medication, and who have not experienced an AIDS-defining event.

NDA 20-972/S-16
Page 11

Table 3: Study 006 - Outcomes of Randomized Treatment Through 48 Weeks

Outcome	SUSTIVA+ZDV+LAM N=422	SUSTIVA+IDV N=429	IDV+ZDV+LAM N=415
HIV-RNA <400 copies/mL (<50 [†] copies/mL)	68% (62%)	55% (49%)	49% (43%)
HIV-RNA ≥400 copies/mL ^{††}	6%	14%	11%
CDC Category C Event ^{††}	3%	2%	2%
Discontinuations for Adverse Events ^{††*}	8%	8%	17%
Discontinuations for Other Reasons ^{††**}	15%	22%	21%

[†] Ultrasensitive HIV-1 MONITOR assay.

^{††} These rates reflect events that were counted as the initial reason for treatment failure in the analysis.

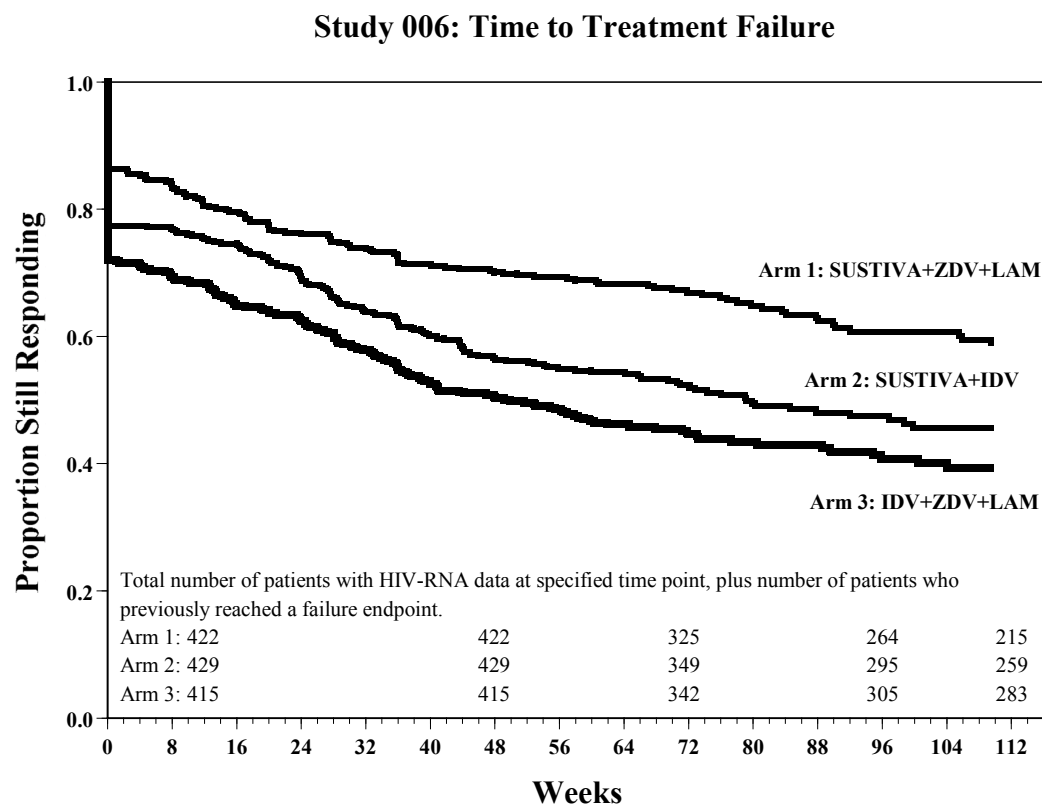
* See **ADVERSE REACTIONS** for a description of the safety profile of these regimens.

** Consent withdrawn, lost to follow-up, missing data or protocol violation.

In addition to the complete 48-week follow-up data reported above, longer-term data are shown in Figure 2. This analysis allows for the inclusion of data beyond 48 weeks as Kaplan-Meier estimates by accounting for patients who have not reached 112 weeks of follow-up.

NDA 20-972/S-16
 Page 12

Figure 2



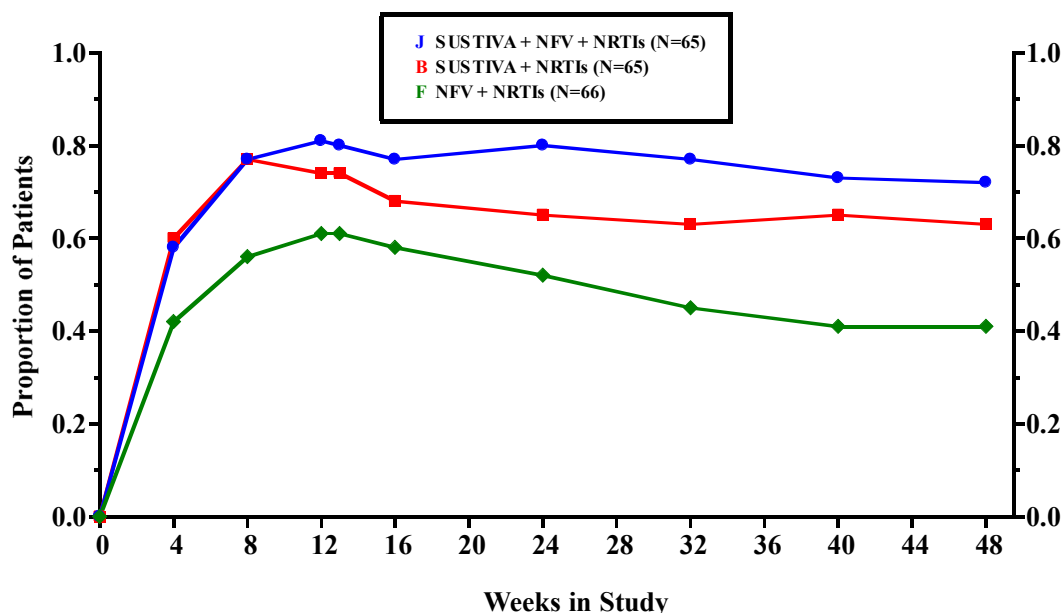
- Subjects were considered to have reached the study endpoint at the first time they either experienced virologic rebound (2 HIV-RNA values ≥ 400 copies), had an AIDS-defining clinical event, or discontinued study medication.
- Subjects who did not respond to initial treatment (no HIV-RNA values < 400 copies) were considered to have reached this endpoint at time zero.

ACTG 364 is a randomized, double-blind, placebo-controlled 48-week study in NRTI-experienced patients who had completed two prior ACTG studies. One-hundred and ninety-six patients (mean age 41 years [range 18-76], 74% Caucasian, 88% male) received NRTIs in combination with SUSTIVA (efavirenz) (600 mg once daily), or nelfinavir (NFV, 750 mg TID), or SUSTIVA (600 mg once daily) + nelfinavir in a randomized double-blinded manner. The mean baseline CD4 cell count was 389 cells/mm³ and mean baseline HIV-RNA level was 8,130 copies/mL. Upon entry into the study, all patients were assigned a new open label NRTI regimen, which was dependent on their previous NRTI treatment experience. There was no significant difference in the mean CD4 cell count among treatment groups; the overall mean increase was approximately 100 cells at 48 weeks among patients who continued on study regimens. Treatment response and outcomes are shown in Figure 3 and Table 4, respectively.

NDA 20-972/S-16
Page 13

Figure 3

Study ACTG 364: Treatment Response



- Proportion of patients at each time point who have HIV-RNA <500 copies confirmed by two consecutive observations and are on their original study medication and who have not experienced an AIDS-defining event.

Table 4: Study ACTG 364 - Outcomes of Randomized Treatment Through 48 Weeks*

Outcome	SUSTIVA+NFV+NRTIs N=65	SUSTIVA+NRTIs N=65	NFV+NRTIs N=66
HIV-RNA < 500 copies/mL ^a	71%	63%	41%
HIV-RNA ≥ 500 copies/mL ^b	17%	34%	54%
CDC Category C Event	2%	0%	0%
Discontinuations for Adverse Events ^c	3%	3%	5%
Discontinuations for Other Reasons ^d	8%	0%	0%

* For some patients, Week 56 data were used to confirm the status at Week 48.

^a Subjects achieved virologic response (two consecutive viral loads <500 copies/mL) and maintained it through Week 48.

^b Includes viral rebound and failure to achieve confirmed <500 copies/mL by Week 48.

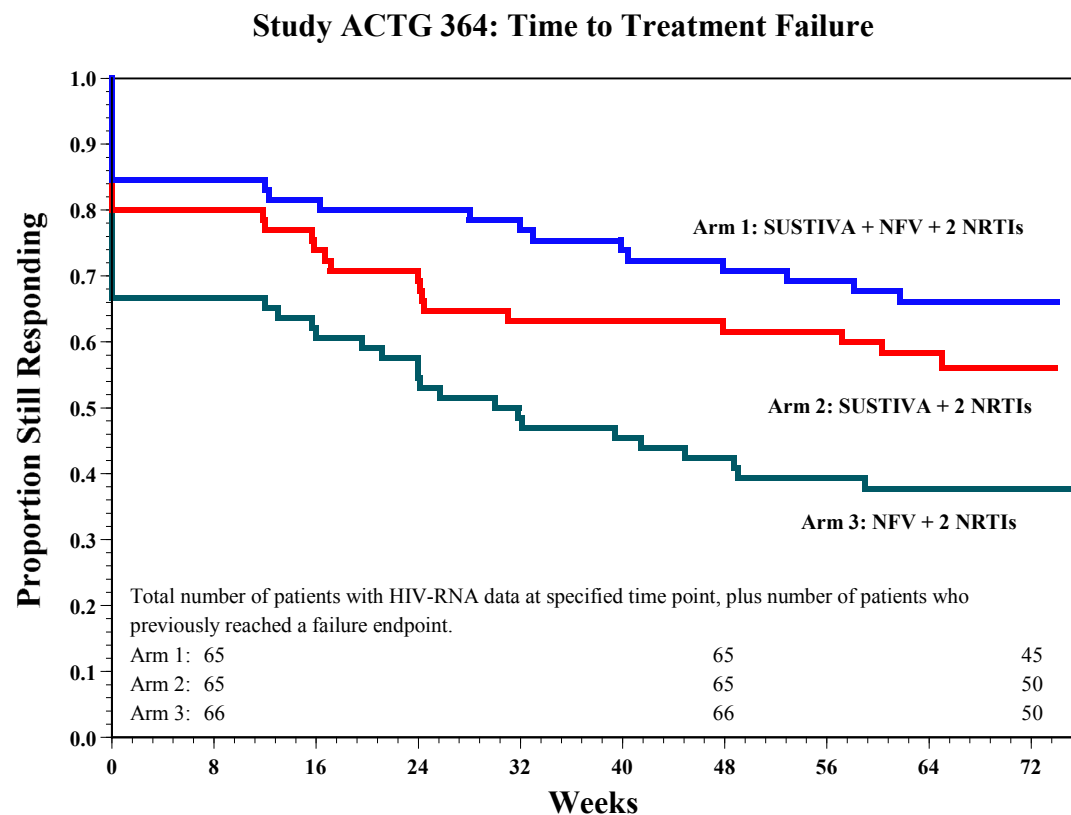
^c See **ADVERSE REACTIONS** for a safety profile of these regimens.

^d Includes loss to follow-up, consent withdrawn, non-compliance.

In addition to the complete 48-week data reported above, longer-term data are shown in Figure 4. This analysis allows for the inclusion of data beyond 48 weeks as Kaplan-Meier estimates by accounting for patients who have not reached 72 weeks of follow-up.

NDA 20-972/S-16
 Page 14

Figure 4



- Subjects were considered to have reached the study endpoint at the first time they either experienced virologic rebound (2 HIV-RNA values ≥ 500 copies), had an AIDS-defining clinical event, or discontinued study medication.
- Subjects who did not respond to initial treatment (no HIV-RNA values ≤ 500 copies) were considered to have reached this endpoint at time zero.
- The initial plateaus through Week 12 are due to the virologic testing schedule and the lack of dropouts during this interval.

CONTRAINDICATIONS

SUSTIVA (efavirenz) is contraindicated in patients with clinically significant hypersensitivity to any of its components.

SUSTIVA should not be administered concurrently with astemizole, cisapride, midazolam, triazolam, or ergot derivatives because competition for CYP3A4 by efavirenz could result in inhibition of metabolism of these drugs and create the potential for serious and/or life-threatening adverse events (e.g., cardiac arrhythmias, prolonged sedation or respiratory depression).

NDA 20-972/S-16

Page 15

WARNINGS

ALERT: Find out about medicines that should NOT be taken with SUSTIVA. This statement is also included on the product's bottle labels. (See **CONTRAINDICATIONS** and **PRECAUTIONS; Drug Interactions.**)

SUSTIVA must not be used as a single agent to treat HIV or added on as a sole agent to a failing regimen. As with all other non-nucleoside reverse transcriptase inhibitors, resistant virus emerges rapidly when efavirenz is administered as monotherapy. The choice of new antiretroviral agents to be used in combination with efavirenz should take into consideration the potential for viral cross-resistance.

Psychiatric Symptoms: Serious psychiatric adverse experiences have been reported in patients treated with SUSTIVA. In controlled trials of 1008 patients treated with regimens containing SUSTIVA for an average of 1.6 years and 635 patients treated with control regimens for an average of 1.3 years, the frequency of specific serious psychiatric events among patients who received SUSTIVA or control regimens, respectively, were: severe depression (1.6%, 0.6%), suicidal ideation (0.6%, 0.3%), non-fatal suicide attempts (0.4%, 0%), aggressive behavior (0.4%, 0.3%), paranoid reactions (0.4%, 0.3%) and manic reactions (0.1%, 0%). Patients with a history of psychiatric disorders appear to be at greater risk of these serious psychiatric adverse experiences, with the frequency of each of the above events ranging from 0.3% for manic reactions to 2.0% for both severe depression and suicidal ideation. There have also been occasional post-marketing reports of death by suicide, delusions and psychosis-like behavior, although a causal relationship to the use of SUSTIVA cannot be determined from these reports. Patients with serious psychiatric adverse experiences should seek immediate medical evaluation to assess the possibility that the symptoms may be related to the use of SUSTIVA, and if so, to determine whether the risks of continued therapy outweigh the benefits (see **ADVERSE REACTIONS**).

Nervous System Symptoms: Fifty-three percent of patients receiving SUSTIVA in controlled trials reported central nervous system symptoms compared to 25% of patients receiving control regimens. These symptoms included, but were not limited to, dizziness (28.1%), insomnia (16.3%), impaired concentration (8.3%), somnolence (7.0%), abnormal dreams (6.2%) and hallucinations (1.2%). These symptoms were severe in 2.0% of patients and 2.1% of patients discontinued therapy as a result. These symptoms usually begin during the first or second day of therapy and generally resolve after the first 2-4 weeks of therapy. After 4 weeks of therapy, the prevalence of nervous system symptoms of at least moderate severity ranged from 5-9% in patients treated with regimens containing SUSTIVA and from 3-5% in patients treated with a control regimen. Patients should be informed that these common symptoms were likely to improve with continued therapy and were not predictive of subsequent onset of the less frequent psychiatric symptoms (see **WARNINGS; Psychiatric**

NDA 20-972/S-16

Page 16

Symptoms). Dosing at bedtime may improve the tolerability of these nervous system symptoms (see **ADVERSE REACTIONS** and **DOSAGE AND ADMINISTRATION**).

Patients receiving SUSTIVA should be alerted to the potential for additive central nervous system effects when SUSTIVA is used concomitantly with alcohol or psychoactive drugs.

Patients who experience central nervous system symptoms such as dizziness, impaired concentration and/or drowsiness should avoid potentially hazardous tasks such as driving or operating machinery.

Drug Interactions: Concomitant use of SUSTIVA and St. John's wort (*hypericum perforatum*) or St. John's wort-containing products is not recommended. Coadministration of non-nucleoside reverse transcriptase inhibitors (NNRTIs), including SUSTIVA, with St. John's wort is expected to substantially decrease NNRTI concentrations and may result in suboptimal levels of efavirenz and lead to loss of virologic response and possible resistance to efavirenz or to the class of NNRTIs.

Reproductive Risk Potential: Malformations have been observed in fetuses from efavirenz-treated monkeys that received doses which resulted in plasma drug concentrations similar to those in humans given 600 mg/day (see **PRECAUTIONS; Pregnancy**); therefore, pregnancy should be avoided in women receiving SUSTIVA. Barrier contraception should always be used in combination with other methods of contraception (e.g., oral or other hormonal contraceptives). Women of childbearing potential should undergo pregnancy testing prior to initiation of SUSTIVA.

PRECAUTIONS

General

Skin Rash: In controlled clinical trials, 26% (266/1008) of patients treated with 600 mg SUSTIVA experienced new onset skin rash compared with 17% (111/635) of patients treated in control groups. Rash associated with blistering, moist desquamation, or ulceration occurred in 0.9% (9/1008) of patients treated with SUSTIVA. The incidence of Grade 4 rash (e.g., erythema multiforme, Stevens-Johnson Syndrome) in patients treated with SUSTIVA in all studies and expanded access was 0.1%. The median time to onset of rash in adults was 11 days and the median duration, 16 days. The discontinuation rate for rash in clinical trials was 1.7% (17/1008). SUSTIVA should be discontinued in patients developing severe rash associated with blistering, desquamation, mucosal involvement or fever. Appropriate antihistamines and/or corticosteroids may improve the tolerability and hasten the resolution of rash.

Rash was reported in 26 of 57 pediatric patients (46%) treated with SUSTIVA capsules. One pediatric patient experienced Grade 3 rash (confluent rash with fever), and two patients had Grade 4 rash (erythema multiforme). The median time to onset of rash in pediatric patients was eight days.

NDA 20-972/S-16

Page 17

Prophylaxis with appropriate antihistamines prior to initiating therapy with SUSTIVA in pediatric patients should be considered (see **ADVERSE REACTIONS**).

Liver Enzymes: In patients with known or suspected history of Hepatitis B or C infection and in patients treated with other medications associated with liver toxicity, monitoring of liver enzymes is recommended. In patients with persistent elevations of serum transaminases to greater than 5 times the upper limit of the normal range, the benefit of continued therapy with SUSTIVA (efavirenz) needs to be weighed against the unknown risks of significant liver toxicity (see **ADVERSE REACTIONS; Laboratory Abnormalities**).

Because of the extensive cytochrome P450-mediated metabolism of efavirenz and limited clinical experience in patients with hepatic impairment, caution should be exercised in administering SUSTIVA to these patients.

Convulsions: Convulsions have been observed infrequently in patients receiving efavirenz, generally in the presence of known medical history of seizures. Patients who are receiving concomitant anticonvulsant medications primarily metabolized by the liver, such as phenytoin, carbamazepine, and phenobarbital, may require periodic monitoring of plasma levels. Caution must be taken in any patient with a history of seizures.

Animal toxicology: Nonsustained convulsions were observed in 6 of 20 monkeys receiving efavirenz at doses yielding plasma AUC values 4- to 13-fold greater than those in humans given the recommended dose.

Cholesterol: Monitoring of cholesterol and triglycerides should be considered in patients treated with SUSTIVA (see **ADVERSE REACTIONS**).

Fat Redistribution: Redistribution/accumulation of body fat including central obesity, dorsocervical fat enlargement (buffalo hump), peripheral wasting, facial wasting, breast enlargement, and "cushingoid appearance" have been observed in patients receiving antiretroviral therapy. The mechanism and long-term consequences of these events are currently unknown. A causal relationship has not been established.

Information for Patients

A statement to patients and healthcare providers is included on the product's bottle labels: **ALERT: Find out about medicines that should NOT be taken with SUSTIVA.** A Patient Package Insert (PPI) for SUSTIVA is available for patient information.

Patients should be informed that SUSTIVA is not a cure for HIV infection and that they may continue to develop opportunistic infections and other complications associated with HIV disease. Patients

NDA 20-972/S-16

Page 18

should be told that there are currently no data demonstrating that SUSTIVA therapy can reduce the risk of transmitting HIV to others through sexual contact or blood contamination.

Patients should be advised to take SUSTIVA every day as prescribed. SUSTIVA must always be used in combination with other antiretroviral drugs. Patients should be advised to take SUSTIVA on an empty stomach, preferably at bedtime. Taking SUSTIVA with food increases efavirenz concentrations and may increase the frequency of adverse events. Dosing at bedtime may improve the tolerability of nervous system symptoms (see **ADVERSE REACTIONS** and **DOSAGE AND ADMINISTRATION**). Patients should remain under the care of a physician while taking SUSTIVA.

Patients should be informed that central nervous system symptoms including dizziness, insomnia, impaired concentration, drowsiness and abnormal dreams are commonly reported during the first weeks of therapy with SUSTIVA. Dosing at bedtime may improve the tolerability of these symptoms, and these symptoms are likely to improve with continued therapy. Patients should be alerted to the potential for additive central nervous system effects when SUSTIVA is used concomitantly with alcohol or psychoactive drugs. Patients should be instructed that if they experience these symptoms they should avoid potentially hazardous tasks such as driving or operating machinery (see **WARNINGS; Nervous System Symptoms**). In clinical trials, patients who develop central nervous system symptoms were not more likely to subsequently develop psychiatric symptoms (see **WARNINGS; Psychiatric Symptoms**).

Patients should also be informed that serious psychiatric symptoms including severe depression, suicide attempts, aggressive behavior, delusions, paranoia and psychosis-like symptoms have also been infrequently reported in patients receiving SUSTIVA. Patients should be informed that if they experience severe psychiatric adverse experiences they should seek immediate medical evaluation to assess the possibility that the symptoms may be related to the use of SUSTIVA, and if so, to determine whether discontinuation of SUSTIVA may be required. Patients should also inform their physician of any history of mental illness or substance abuse (see **WARNINGS; Psychiatric Symptoms**).

Patients should be informed that another common side effect is rash. These rashes usually go away without any change in treatment. In a small number of patients, rash may be serious. Patients should be advised that they should contact their physician promptly if they develop a rash.

Because malformations have been observed in fetuses from efavirenz-treated animals, instructions should be given to avoid pregnancy in women receiving SUSTIVA. Women should be advised to notify their physician if they become pregnant while taking SUSTIVA. A reliable form of barrier contraception should always be used in combination with other methods of contraception, including oral or other hormonal contraception because the effects of efavirenz on hormonal contraceptives are not fully characterized.

NDA 20-972/S-16

Page 19

SUSTIVA may interact with some drugs; therefore, patients should be advised to report to their doctor the use of any other prescription, non-prescription medication or herbal products, particularly St. John's wort.

Patients should be informed that redistribution or accumulation of body fat may occur in patients receiving antiretroviral therapy and that the cause and long-term health effects of these conditions are not known at this time.

Drug Interactions (see also CONTRAINDICATIONS and CLINICAL PHARMACOLOGY; Drug Interactions)

Efavirenz has been shown *in vivo* to induce CYP3A4. Other compounds that are substrates of CYP3A4 may have decreased plasma concentrations when coadministered with SUSTIVA. *In vitro* studies have demonstrated that efavirenz inhibits 2C9, 2C19 and 3A4 isozymes in the range of observed efavirenz plasma concentrations. Coadministration of efavirenz with drugs primarily metabolized by these isozymes may result in altered plasma concentrations of the coadministered drug. Therefore, appropriate dose adjustments may be necessary for these drugs.

Drugs which induce CYP3A4 activity (e.g., phenobarbital, rifampin, rifabutin) would be expected to increase the clearance of efavirenz resulting in lowered plasma concentrations. Drug interactions with SUSTIVA are summarized in Table 5.

Table 5*:

Drugs That Should Not Be Coadministered With SUSTIVA

Drug Class	Drugs Within Class Not To Be Coadministered With SUSTIVA
Antihistamines	astemizole
Benzodiazepines	midazolam, triazolam
GI Motility Agents	cisapride
Anti-Migraine	ergot derivatives

Established Drug Interactions

Drug Name	Effect	Clinical Comment
Clarithromycin	↓ clarithromycin concentration ↑ 14-OH metabolite concentration	Plasma concentrations decreased by SUSTIVA; clinical significance unknown. In uninfected volunteers, 46% developed rash while receiving SUSTIVA and clarithromycin. No dose adjustment of SUSTIVA is recommended when given with clarithromycin. Alternatives to clarithromycin, such as azithromycin, should be considered (see Other Drugs , below table). Other macrolide antibiotics, such as erythromycin, have not been studied in combination with SUSTIVA.
Indinavir	↓ indinavir concentration	Increase indinavir dose from 800 mg to 1000 mg every 8 hours.

NDA 20-972/S-16

Page 20

Established Drug Interactions

Drug Name	Effect	Clinical Comment
Methadone	↓ methadone concentration	Coadministration in HIV-infected individuals with a history of injection drug use resulted in decreased plasma levels of methadone and signs of opiate withdrawal. Methadone dose was increased by a mean of 22% to alleviate withdrawal symptoms. Patients should be monitored for signs of withdrawal and their methadone dose increased as required to alleviate withdrawal symptoms.
Ethinyl estradiol	↑ ethinyl estradiol concentration	Plasma concentrations increased by SUSTIVA; clinical significance unknown. Because the potential interaction of efavirenz with oral contraceptives has not been fully characterized, a reliable method of barrier contraception should be used in addition to oral contraceptives.
Rifabutin	↓ rifabutin concentration	Increase daily dose of rifabutin by 50%. Consider doubling the rifabutin dose in regimens where rifabutin is given 2 or 3 times a week.
Rifampin	↓ efavirenz concentration	Clinical significance of reduced efavirenz concentrations unknown.
Ritonavir	↑ ritonavir concentration ↑ efavirenz concentration	Combination was associated with a higher frequency of adverse clinical experiences (e.g., dizziness, nausea, paresthesia) and laboratory abnormalities (elevated liver enzymes). Monitoring of liver enzymes is recommended when SUSTIVA is used in combination with ritonavir.
Saquinavir	↓ saquinavir concentration	Should not be used as sole protease inhibitor in combination with SUSTIVA.

Other Potentially Clinically Significant Drug or Herbal Product Interactions With SUSTIVA**

Anticoagulants: Warfarin	Plasma concentrations and effects potentially increased or decreased by SUSTIVA.
Anticonvulsants: Phenytoin Phenobarbital Carbamazepine	Potential for reduction in anticonvulsant and/or efavirenz plasma levels; periodic monitoring of anticonvulsant plasma levels should be conducted.
Antifungals: Itraconazole Ketoconazole	Drug interaction studies with SUSTIVA and these imidazole and triazole antifungals have not been conducted. SUSTIVA has the potential to decrease plasma concentrations of itraconazole and ketoconazole.
Anti-HIV protease inhibitors: Saquinavir/ritonavir combination Amprenavir	No pharmacokinetic data are available. SUSTIVA has the potential to decrease serum concentrations of amprenavir.
Non-nucleoside reverse transcriptase inhibitors	No studies have been performed with other NNRTIs.
St. John's wort (<i>hypericum perforatum</i>)	Expected to substantially decrease plasma levels of efavirenz; has not been studied in combination with SUSTIVA.

*See Tables 1 and 2.

**This table is not all-inclusive.

NDA 20-972/S-16

Page 21

Other Drugs: Based on the results of drug interaction studies (see Tables 1 and 2), no dosage adjustment is recommended when SUSTIVA is given with the following: aluminum/magnesium hydroxide antacids, azithromycin, cetirizine, famotidine, fluconazole, lamivudine, lorazepam, nelfinavir, and zidovudine.

Specific drug interaction studies have not been performed with SUSTIVA and NRTIs other than lamivudine and zidovudine. Clinically significant interactions would not be expected since the NRTIs are metabolized via a different route than efavirenz and would be unlikely to compete for the same metabolic enzymes and elimination pathways.

Carcinogenesis, Mutagenesis, and Impairment of Fertility

Long-term carcinogenicity studies in mice and rats were carried out with efavirenz. Mice were dosed with 0, 25, 75, 150, or 300 mg/kg/day for 2 years. Incidences of hepatocellular adenomas and carcinomas and pulmonary alveolar/bronchiolar adenomas were increased above background in females. No increases in tumor incidence above background were seen in males. In studies in which rats were administered efavirenz at doses of 0, 25, 50, or 100 mg/kg/day for 2 years, no increases in tumor incidence above background were observed. The systemic exposure (based on AUCs) in mice was approximately 1.7-fold that in humans receiving the 600-mg/day dose. The exposure in rats was lower than that in humans. The mechanism of the carcinogenic potential is unknown. However, in genetic toxicology assays, efavirenz showed no evidence of mutagenic or clastogenic activity in a battery of *in vitro* and *in vivo* studies. These included bacterial mutation assays in *S. typhimurium* and *E. coli*, mammalian mutation assays in Chinese hamster ovary cells, chromosome aberration assays in human peripheral blood lymphocytes or Chinese hamster ovary cells, and an *in vivo* mouse bone marrow micronucleus assay. Given the lack of genotoxic activity of efavirenz, the relevance to humans of neoplasms in efavirenz-treated mice is not known.

Efavirenz did not impair mating or fertility of male or female rats, and did not affect sperm of treated male rats. The reproductive performance of offspring born to female rats given efavirenz was not affected. As a result of the rapid clearance of efavirenz in rats, systemic drug exposures achieved in these studies were equivalent to or below those achieved in humans given therapeutic doses of efavirenz.

Pregnancy

Pregnancy Category C: Malformations have been observed in 3 of 20 fetuses/infants from efavirenz-treated cynomolgus monkeys (versus 0 of 20 concomitant controls) in a developmental toxicity study. The pregnant monkeys were dosed throughout pregnancy (post coital days 20-150) with efavirenz 60 mg/kg daily, a dose which resulted in plasma drug concentrations similar to those in humans given 600 mg/day of SUSTIVA. Anencephaly and unilateral anophthalmia were observed in one fetus,

NDA 20-972/S-16

Page 22

microphthalmia was observed in another fetus, and cleft palate was observed in a third fetus. Efavirenz crosses the placenta in cynomolgus monkeys and produces fetal blood concentrations similar to maternal blood concentrations. Because teratogenic effects have been seen in primates at efavirenz exposures similar to those seen in the clinic at the recommended dose, pregnancy should be avoided in women receiving SUSTIVA. Barrier contraception should always be used in combination with other methods of contraception (e.g., oral or other hormonal contraceptives). Women of childbearing potential should undergo pregnancy testing prior to initiation of SUSTIVA (see **WARNINGS; Reproductive Risk Potential**).

Efavirenz has been shown to cross the placenta in rats and rabbits and produces fetal blood concentrations of efavirenz similar to maternal concentrations. An increase in fetal resorptions was observed in rats at efavirenz doses that produced peak plasma concentrations and AUC values in female rats equivalent to, or lower than those achieved in humans given 600 mg once daily of SUSTIVA. Efavirenz produced no reproductive toxicities when given to pregnant rabbits at doses that produced peak plasma concentrations similar to, and AUC values approximately half of those achieved in humans given 600 mg once daily of SUSTIVA.

There are no adequate and well-controlled studies in pregnant women. SUSTIVA should be used during pregnancy only if the potential benefit justifies the potential risk to the fetus, such as in pregnant women without other therapeutic options.

Antiretroviral Pregnancy Registry: To monitor fetal outcomes of pregnant women exposed to SUSTIVA, an Antiretroviral Pregnancy Registry has been established. Physicians are encouraged to register patients by calling (800) 258-4263.

Nursing Mothers

The Centers for Disease Control and Prevention recommend that HIV-infected mothers not breast-feed their infants to avoid risking postnatal transmission of HIV. Although it is not known if efavirenz is secreted in human milk, efavirenz is secreted into the milk of lactating rats. Because of the potential for HIV transmission and the potential for serious adverse effects in nursing infants, **mothers should be instructed not to breast-feed if they are receiving SUSTIVA.**

Pediatric Use

ACTG 382 is an ongoing, open-label study in 57 NRTI-experienced pediatric patients to characterize the safety, pharmacokinetics, and antiviral activity of SUSTIVA in combination with nelfinavir (20-30 mg/kg TID) and NRTIs. Mean age was 8 years (range 3-16). SUSTIVA has not been studied in pediatric patients below 3 years of age or who weigh less than 13 Kg. At 48 weeks, the type and frequency of adverse experiences was generally similar to that of adult patients with the exception of a higher incidence of rash which was reported in 46% (26/57) of pediatric patients compared to 26% of

NDA 20-972/S-16

Page 23

adults, and a higher frequency of Grade 3 or 4 rash reported in 5% (3/57) of pediatric patients compared to 0.9% of adults (see **ADVERSE REACTIONS**; **Table 7**).

The starting dose of SUSTIVA was 600 mg once daily adjusted to body size, based on weight, targeting AUC levels in the range of 190-380 $\mu\text{M}\cdot\text{h}$. The pharmacokinetics of efavirenz in pediatric patients were similar to the pharmacokinetics in adults who received 600 mg daily doses of SUSTIVA. In 48 pediatric patients receiving the equivalent of a 600 mg dose of SUSTIVA, steady-state C_{max} was $14.2 \pm 5.8 \mu\text{M}$ (mean \pm S.D.), steady-state C_{min} was $5.6 \pm 4.1 \mu\text{M}$, and AUC was $218 \pm 104 \mu\text{M}\cdot\text{h}$.

Geriatric Use

Clinical studies of SUSTIVA did not include sufficient numbers of subjects aged 65 and over to determine whether they respond differently from younger subjects. In general, dose selection for an elderly patient should be cautious, reflecting the greater frequency of decreased hepatic, renal, or cardiac function and of concomitant disease or other therapy.

ADVERSE REACTIONS

The most significant adverse events observed in patients treated with SUSTIVA are nervous system symptoms, psychiatric symptoms, and rash.

Nervous System Symptoms: Fifty-three percent of patients receiving SUSTIVA reported central nervous system symptoms (see **WARNINGS**; **Nervous System Symptoms**). Table 6 lists the frequency of the symptoms of different degrees of severity, and gives the discontinuation rates, in clinical trials for one or more of the following nervous system symptoms: dizziness, insomnia, impaired concentration, somnolence, abnormal dreaming, euphoria, confusion, agitation, amnesia, hallucinations, stupor, abnormal thinking, and depersonalization. The frequencies of specific central and peripheral nervous system symptoms are provided in Table 8.

NDA 20-972/S-16
Page 24

Table 6: Percent of Patients with One or More Selected Nervous System Symptoms^{1,2}

Percent of Patients with:	SUSTIVA 600 mg Once Daily (N=1008)	Control Groups (N=635)
	%	%
Symptoms of Any Severity	52.7	24.6
Mild Symptoms ³	33.3	15.6
Moderate Symptoms ⁴	17.4	7.7
Severe Symptoms ⁵	2.0	1.3
Treatment discontinuation as a result of symptoms	2.1	1.1

¹ Includes events reported regardless of causality.

² Data from Study 006 and three Phase 2/3 studies.

³ “Mild” = Symptoms which do not interfere with patient’s daily activities.

⁴ “Moderate” = Symptoms which may interfere with daily activities.

⁵ “Severe” = Events which interrupt patient’s usual daily activities.

Psychiatric Symptoms: Serious psychiatric adverse experiences have been reported in patients treated with SUSTIVA. In controlled trials the frequency of specific serious psychiatric symptoms among patients who received SUSTIVA or control regimens, respectively, were: severe depression (1.6%, 0.6%), suicidal ideation (0.6%, 0.3%), non-fatal suicide attempts (0.4%, 0%), aggressive behavior (0.4%, 0.3%), paranoid reactions (0.4%, 0.3%) and manic reactions (0.1%, 0%) (see **WARNINGS; Psychiatric Symptoms**). Additional psychiatric symptoms observed at a frequency of >2% among patients treated with SUSTIVA or control regimens, respectively, in controlled clinical trials were depression (15.8%, 13.1%), anxiety (11.1%, 7.6%), and nervousness (6.3%, 2.0%).

Skin Rash: Rashes are usually mild-to-moderate maculopapular skin eruptions that occur within the first two weeks of initiating therapy with SUSTIVA. In most patients, rash resolves with continuing SUSTIVA therapy within one month. SUSTIVA can be reinitiated in patients interrupting therapy because of rash. Use of appropriate antihistamines and/or corticosteroids may be considered when SUSTIVA is restarted. SUSTIVA should be discontinued in patients developing severe rash associated with blistering, desquamation, mucosal involvement or fever. The frequency of rash by NCI grade and the discontinuation rates as a result of rash are provided in Table 7.

NDA 20-972/S-16
Page 25

Table 7: Percent of Patients with Treatment-Emergent Rash^{1,2}

Percent of Patients with:	Description of Rash Grade ³	SUSTIVA 600 mg Once Daily Adults (N=1008)	SUSTIVA Pediatric Patients (N=57)	Control Groups Adults (N= 635)
		%	%	%
Rash of Any Grade	—	26.3	45.6	17.5
Grade 1 Rash	Erythema, pruritus	10.7	8.8	9.8
Grade 2 Rash	Diffuse maculopapular rash, dry desquamation	14.7	31.6	7.4
Grade 3 Rash	Vesiculation, moist desquamation, ulceration	0.8	1.8	0.3
Grade 4 Rash	Erythema multiforme, Stevens-Johnson Syndrome, toxic epidermal necrolysis, necrosis requiring surgery, exfoliative dermatitis	0.1	3.5	0.0
Treatment discontinuation as a result of rash	—	1.7	8.8	0.3

¹ Includes events reported regardless of causality.

² Data from Study 006 and three Phase 2/3 studies.

³ NCI Grading System.

As seen in Table 7, rash is more common in pediatric patients and more often of higher grade (i.e., more severe) (see **PRECAUTIONS; General**).

Experience with SUSTIVA (efavirenz) in patients who discontinued other antiretroviral agents of the NNRTI class is limited. Nineteen patients who discontinued nevirapine because of rash have been treated with SUSTIVA. Nine of these patients developed mild-to-moderate rash while receiving therapy with SUSTIVA, and two of these patients discontinued because of rash.

A few cases of pancreatitis have been described, although a causal relationship with efavirenz has not been established. Asymptomatic increases in serum amylase levels were observed in a significantly higher number of patients treated with efavirenz 600 mg than in control patients (see **ADVERSE REACTIONS; Laboratory Abnormalities**).

Drug-related clinical adverse experiences of moderate or severe intensity observed in $\geq 2\%$ of patients in two controlled clinical trials are presented in Table 8.

NDA 20-972/S-16
Page 26

Table 8: Percent of Patients with Treatment-Emergent¹ Adverse Events of Moderate or Severe Intensity Reported in ≥ 2% of Patients in Studies 006 and ACTG 364

Adverse Events	Study 006 LAM, NNRTI and Protease Inhibitor Naive Patients			Study ACTG 364 NRTI-experienced NNRTI and Protease Inhibitor Naive Patients		
	SUSTIVA ² + ZDV/LAM (N=412) %	SUSTIVA ² + Indinavir (N=415) %	Indinavir + ZDV/LAM (N=401) %	SUSTIVA ² + Nelfinavir + NRTIs (N=64) %	SUSTIVA ² + NRTIs (N=65) %	Nelfinavir + NRTIs (N=66) %
Body as a Whole						
Fatigue	7	5	8	0	2	3
Pain	1	1	5	13	6	17
Central and Peripheral Nervous System						
Dizziness	8	8	3	2	6	6
Headache	7	4	4	5	2	3
Concentration Impaired	5	2	0	0	0	0
Insomnia	6	7	3	0	0	2
Abnormal Dreams	3	1	0	--	--	--
Somnolence	3	2	2	0	0	0
Anorexia	1	0	1	0	2	2
Gastrointestinal						
Nausea	12	7	25	3	2	2
Vomiting	7	6	14	--	--	--
Diarrhea	6	8	6	14	3	9
Dyspepsia	3	3	5	0	0	2
Abdominal Pain	1	2	4	3	3	3
Psychiatric						
Anxiety	1	3	0	--	--	--
Depression	2	1	0	3	0	5
Nervousness	2	2	0	2	0	2
Skin & Appendages						
Rash	13	20	7	9	5	9
Pruritus	0	1	1	9	5	9
Increased Sweating	2	1	0	0	0	0

¹ Includes adverse events at least possibly related to study drug or of unknown relationship for Study 006. Includes all adverse events regardless of relationship to study drug for Study ACTG 364.

² SUSTIVA provided as 600 mg Once Daily.

-- = Not Specified.

In Study 006, lipodystrophy was reported in 2.3% of patients treated with SUSTIVA + IDV, 0.7% of patients treated with SUSTIVA+ZDV+LAM and 1.0% of patients treated with IDV+ZDV+LAM.

NDA 20-972/S-16

Page 27

Clinical adverse experiences observed in $\geq 10\%$ of 57 pediatric patients aged 3 to 16 years who received SUSTIVA capsules, nelfinavir, and one or more NRTIs were: rash (46%), diarrhea/loose stools (39%), fever (21%), cough (16%), dizziness/lightheaded/fainting (16%), ache/pain/discomfort (14%), nausea/vomiting (12%), and headache (11%). The incidence of nervous system symptoms was 18% (10/57). One patient experienced Grade 3 rash, two patients had Grade 4 rash, and five patients (9%) discontinued because of rash (see also **PRECAUTIONS**; **Skin Rash** and **Pediatric Use**).

Post-Marketing Experience:

Body as a Whole: allergic reactions, asthenia, redistribution/accumulation of body fat (see **PRECAUTIONS**; **Fat Redistribution**).

Central and Peripheral Nervous System: abnormal coordination, ataxia, convulsions, hypoesthesia, paresthesia, neuropathy, tremor

Endocrine: gynecomastia

Gastrointestinal: constipation, malabsorption

Cardiovascular: flushing, palpitations

Liver and Biliary System: hepatic enzyme increase, hepatic failure, hepatitis

Metabolic and Nutritional: hypercholesterolemia, hypertriglyceridemia

Musculoskeletal: arthralgia, myalgia, myopathy

Psychiatric: aggressive reactions, agitation, delusions, emotional lability, mania, neurosis, paranoia, psychosis, suicide

Respiratory: dyspnea

Skin and Appendages: erythema multiforme, nail disorders, skin discoloration, Stevens-Johnson Syndrome

Special Senses: abnormal vision, tinnitus

Laboratory Abnormalities:

Liver Enzymes: Among 1008 patients treated with 600 mg efavirenz in controlled clinical trials, 3% developed AST levels and 3% developed ALT levels greater than five times the upper limit of normal. Similar elevations of AST and ALT were seen in patients treated with control regimens.

NDA 20-972/S-16

Page 28

Liver function tests should be monitored in patients with a prior history of Hepatitis B and/or C. In 156 patients treated with 600 mg of SUSTIVA who were seropositive for Hepatitis B and/or C, 7% developed AST levels and 8% developed ALT levels greater than five times the upper limit of normal. In 91 patients seropositive for Hepatitis B and/or C treated with control regimens, 5% developed AST elevations and 4% developed ALT elevations to these levels. Elevations of GGT to greater than five times the upper limit of the normal range were observed in 4% of all patients treated with 600 mg of SUSTIVA and in 10% of patients seropositive for Hepatitis B or C. In patients treated with control regimens, the incidence of GGT elevations to this level was 1.5-2%, irrespective of Hepatitis B or C serology. Isolated elevations of GGT in patients receiving SUSTIVA may reflect enzyme induction not associated with liver toxicity (see **PRECAUTIONS; General**).

Lipids: Increases in total cholesterol of 10-20% have been observed in some uninfected volunteers receiving SUSTIVA. In patients treated with SUSTIVA+ZDV+LAM, increases in non-fasting total cholesterol and HDL of approximately 20% and 25%, respectively, were observed. In patients treated with SUSTIVA+IDV, increases in non-fasting cholesterol and HDL of approximately 40% and 35%, respectively, were observed. The effects of SUSTIVA on triglycerides and LDL were not well-characterized since samples were taken from non-fasting patients. The clinical significance of these findings is unknown (see **PRECAUTIONS; General**).

Serum Amylase: Asymptomatic elevations in serum amylase greater than 1.5 times the upper limit of normal were seen in 10% of patients treated with SUSTIVA and in 6% of patients treated with control regimens. The clinical significance of asymptomatic increases in serum amylase is unknown (see **ADVERSE REACTIONS**).

Cannabinoid Test Interaction: Efavirenz does not bind to cannabinoid receptors. False-positive urine cannabinoid test results have been observed in non-HIV-infected volunteers receiving SUSTIVA when the Microgenics CEDIA[®] DAU Multi-Level THC assay was used for screening. Negative results were obtained when more specific confirmatory testing was performed with gas chromatography/mass spectrometry.

Of the three assays analyzed (Microgenics CEDIA DAU Multi-Level THC assay, Cannabinoid Enzyme Immunoassay [Diagnostic Reagents, Inc], and AxSYM[®] Cannabinoid Assay [Abbott Laboratories]), only the Microgenics CEDIA DAU Multi-Level THC assay showed false-positive results. The other two assays provided true-negative results. The effects of SUSTIVA on cannabinoid screening tests other than these three are unknown. The manufacturers of cannabinoid assays should be contacted for additional information regarding the use of their assays with patients receiving efavirenz.

NDA 20-972/S-16

Page 29

OVERDOSAGE

Some patients accidentally taking 600 mg twice daily have reported increased nervous system symptoms. One patient experienced involuntary muscle contractions.

Treatment of overdose with SUSTIVA (efavirenz) should consist of general supportive measures, including monitoring of vital signs and observation of the patient's clinical status. Administration of activated charcoal may be used to aid removal of unabsorbed drug. There is no specific antidote for overdose with SUSTIVA. Since efavirenz is highly protein bound, dialysis is unlikely to significantly remove the drug from blood.

DOSAGE AND ADMINISTRATION

Adults: The recommended dosage of SUSTIVA is 600 mg orally, once daily, in combination with a protease inhibitor and/or nucleoside analogue reverse transcriptase inhibitors (NRTIs). It is recommended that SUSTIVA be taken on an empty stomach, preferably at bedtime. The increased efavirenz concentrations observed following administration of SUSTIVA with food may lead to an increase in frequency of adverse events (see **CLINICAL PHARMACOLOGY; Effect of Food on Oral Absorption**). Dosing at bedtime may improve the tolerability of nervous system symptoms (see **WARNINGS; Nervous System Symptoms, PRECAUTIONS; Information for Patients, and ADVERSE REACTIONS**).

Concomitant Antiretroviral Therapy: SUSTIVA must be given in combination with other antiretroviral medications (see **CLINICAL PHARMACOLOGY; Drug Interactions** and **PRECAUTIONS; Drug Interactions** and **INDICATIONS AND USAGE**).

Pediatric Patients: It is recommended that SUSTIVA be taken on an empty stomach, preferably at bedtime. Table 9 describes the recommended dose of SUSTIVA for pediatric patients 3 years of age or older and weighing between 10 and 40 Kg. The recommended dosage of SUSTIVA for pediatric patients weighing greater than 40 Kg is 600 mg, once daily.

Table 9: Pediatric Dose to be Administered Once Daily

Body Weight		SUSTIVA Dose (mg)
<u>Kg</u>	<u>Lbs</u>	
10 to <15	22 to <33	200
15 to <20	33 to <44	250
20 to <25	44 to <55	300
25 to <32.5	55 to <71.5	350
32.5 to <40	71.5 to <88	400
≥40	≥88	600

NDA 20-972/S-16

Page 30

HOW SUPPLIED

Capsules

SUSTIVA capsules are available as follows:

Capsules 200 mg are gold color, reverse printed with “SUSTIVA” on the body and imprinted “200 mg” on the cap.

Bottles of 90 NDC 0056-0474-92

Capsules 100 mg are white, reverse printed with “SUSTIVA” on the body and imprinted “100 mg” on the cap.

Bottles of 30 NDC 0056-0473-30

Capsules 50 mg are gold color and white, printed with “SUSTIVA” on the gold color cap and reverse printed “50 mg” on the white body.

Bottles of 30 NDC 0056-0470-30

Tablets

SUSTIVA tablets are available as follows:

Tablets 600 mg are yellow, capsular-shaped, film-coated tablets, with "SUSTIVA" printed on both sides.

Bottles of 30 NDC 0056-0510-30

SUSTIVA capsules and SUSTIVA tablets should be stored at 25°C (77°F); excursions permitted to 15°-30°C (59°-86°F) [see USP Controlled Room Temperature].

Distributed by:

Bristol-Myers Squibb Company

Princeton, NJ 08543 USA

SUSTIVA[®] is a registered trademark of Bristol-Myers Squibb Pharma Company.

Copyright © Bristol-Myers Squibb Company 2002

NDA 20-972/S-16
Page 31

Patient Information

SUSTIVA^{®*} (sus-TEE-vah)

[efavirenz (eh-FAH-vih-rehnz)]

capsules and tablets

ALERT: Find out about medicines that should NOT be taken with SUSTIVA.

Please also read the section "**MEDICINES YOU SHOULD NOT TAKE WITH SUSTIVA.**"

Read this information before you start taking SUSTIVA. Read it again each time you refill your prescription, in case there is any new information. This leaflet provides a summary about SUSTIVA and does not include everything there is to know about your medicine. This information is not meant to take the place of talking with your doctor.

What is SUSTIVA?

SUSTIVA is a medicine used in combination with other medicines to help treat infection with Human Immunodeficiency Virus (HIV), the virus that causes AIDS (acquired immune deficiency syndrome). SUSTIVA is a type of anti-HIV drug called a "non-nucleoside reverse transcriptase inhibitor" (NNRTI).

SUSTIVA works by lowering the amount of HIV in the blood (viral load). SUSTIVA must be taken with other anti-HIV medicines. When taken with other anti-HIV medicines, SUSTIVA has been shown to reduce viral load and increase the number of CD4 cells, a type of immune cell in blood. SUSTIVA may not have these effects in every patient.

SUSTIVA does not cure HIV or AIDS. People taking SUSTIVA may still develop other infections and complications. Therefore, it is very important that you stay under the care of your doctor.

SUSTIVA has not been shown to reduce the risk of passing HIV to others. Therefore, continue to practice safe sex, and do not use or share dirty needles.

NDA 20-972/S-16

Page 32

What are the possible side effects of SUSTIVA?

Serious psychiatric problems. A small number of patients experience severe depression, strange thoughts, or angry behavior while taking SUSTIVA. Some patients have thoughts of suicide and a few have actually committed suicide. These problems tend to occur more often in patients who have had mental illness. Contact your doctor right away if you think you are having these psychiatric symptoms, so your doctor can decide if you should continue to take SUSTIVA.

Common side effects. Many patients have dizziness, trouble sleeping, drowsiness, trouble concentrating, and/or unusual dreams during treatment with SUSTIVA. These side effects may be reduced if you take SUSTIVA at bedtime on an empty stomach. They also tend to go away after you have taken the medicine for a few weeks. If you have these common side effects, such as dizziness, it does not mean that you will also have serious psychiatric problems, such as severe depression, strange thoughts, or angry behavior. Tell your doctor right away if any of these side effects continue or if they bother you. It is possible that these symptoms may be more severe if SUSTIVA is used with alcohol or mood altering (street) drugs.

If you are dizzy, have trouble concentrating, or are drowsy, avoid activities that may be dangerous, such as driving or operating machinery.

Rash is common. Rashes usually go away without any change in treatment. In a small number of patients, rash may be serious. If you develop a rash, call your doctor right away. **Rash may be a serious problem in some children.** Tell your child's doctor right away if you notice rash or any other side effects while your child is taking SUSTIVA.

Other common side effects include tiredness, upset stomach, vomiting, and diarrhea.

Changes in body fat. Changes in body fat develop in some patients taking anti-HIV medicine. These changes may include an increased amount of fat in the upper back and neck ("buffalo hump"), in the breasts, and around the trunk. Loss of fat from the legs, arms, and face may also happen. The cause and long-term health effects of these fat changes are not known.

Tell your doctor or healthcare provider if you notice any side effects while taking SUSTIVA.

Contact your doctor before stopping SUSTIVA because of side effects or for any other reason.

This is not a complete list of side effects possible with SUSTIVA. Ask your doctor or pharmacist for a more complete list of side effects of SUSTIVA and all the medicines you will take.

NDA 20-972/S-16

Page 33

How should I take SUSTIVA?

General Information

- You should take SUSTIVA on an empty stomach, preferably at bedtime.
- Swallow SUSTIVA with water.
- Taking SUSTIVA with food increases the amount of medicine in your body, which may increase the frequency of side effects.
- Taking SUSTIVA at bedtime may make some side effects less bothersome.
- SUSTIVA must be taken in combination with other anti-HIV medicines. If you take only SUSTIVA, the medicine may stop working.
- Do not miss a dose of SUSTIVA. If you forget to take SUSTIVA, take the missed dose right away, unless it is almost time for your next dose. Do not double the next dose. Carry on with your regular dosing schedule. If you need help in planning the best times to take your medicine, ask your doctor or pharmacist.
- Take the exact amount of SUSTIVA your doctor prescribes. Never change the dose on your own. Do not stop this medicine unless your doctor tells you to stop.
- If you believe you took more than the prescribed amount of SUSTIVA, contact your local Poison Control Center or emergency room right away.
- Tell your doctor if you start any new medicine or change how you take old ones. Your doses may need adjustment.
- When your SUSTIVA supply starts to run low, get more from your doctor or pharmacy. This is very important because the amount of virus in your blood may increase if the medicine is stopped for even a short time. The virus may develop resistance to SUSTIVA and become harder to treat.
- Your doctor may want to do blood tests to check for certain side effects while you take SUSTIVA (efavirenz).

Capsules

- The dose of SUSTIVA capsules for adults is 600 mg (three 200 mg capsules, taken together) once a day by mouth. The dose of SUSTIVA for children may be lower (see **Can children take SUSTIVA?**).

Tablets

- The dose of SUSTIVA tablets for adults is 600 mg (one tablet) once a day by mouth.

Can children take SUSTIVA?

Yes, children who are able to swallow capsules can take SUSTIVA. Rash may be a serious problem in some children. Tell your child's doctor right away if you notice rash or any other side effects while your child is taking SUSTIVA. The dose of SUSTIVA for children may be lower than the dose for adults. Capsules containing lower doses of SUSTIVA are available. Your child's doctor will determine the right dose based on your child's weight.

NDA 20-972/S-16

Page 34

Who should not take SUSTIVA?

Do not take SUSTIVA if you are allergic to the active ingredient, efavirenz, or to any of the inactive ingredients. Your doctor and pharmacist have a list of the inactive ingredients.

What should I avoid while taking SUSTIVA?

- **Women taking SUSTIVA should not become pregnant.** Serious birth defects have been seen in animals treated with SUSTIVA. It is not known whether this could happen in humans. **Tell your doctor right away if you are pregnant.** Also talk with your doctor if you want to become pregnant.
- Women should not rely only on hormone-based birth control, such as pills, injections, or implants, because SUSTIVA may make these contraceptives ineffective. Women must use a reliable form of barrier contraception, such as a condom or diaphragm, even if they also use other methods of birth control.
- **Do not breast-feed if you are taking SUSTIVA.** The Centers for Disease Control and Prevention recommend that mothers with HIV not breast-feed because they can pass the HIV through their milk to the baby. Also, SUSTIVA may pass through breast milk and cause serious harm to the baby. Talk with your doctor if you are breast-feeding. You may need to stop breast-feeding or use a different medicine.
- Taking SUSTIVA with alcohol or other medicines causing similar side effects as SUSTIVA, such as drowsiness, may increase those side effects.
- Do not take any other medicines without checking with your doctor. These medicines include prescription and non-prescription medicines and herbal products, especially St John's wort.

Before using SUSTIVA, tell your doctor if you

- **have problems with your liver, or have hepatitis.** Your doctor may want to do tests to check your liver while you take SUSTIVA.
- **have ever had mental illness or are using drugs or alcohol.**
- **have ever had seizures or are taking medicine for seizures** [for example, Dilantin[®] (phenytoin), Tegretol[®] (carbamazepine), or phenobarbital].** Your doctor may want to check drug levels in your blood from time to time.

What important information should I know about taking other medicines with SUSTIVA?

SUSTIVA may change the effect of other medicines, including ones for HIV, and cause serious side effects. Your doctor may change your other medicines or change their doses. Other medicines, including herbal products, may affect SUSTIVA. For this reason, **it is very important to:**

- Let all your doctors and pharmacists know that you take SUSTIVA.
- Tell your doctors and pharmacists about all medicines you take. This includes those you buy over-the-counter and herbal or natural remedies.

NDA 20-972/S-16

Page 35

Bring all your prescription and non-prescription medicines as well as any herbal remedies that you are taking when you see a doctor, or make a list of their names, how much you take, and how often you take them. This will give your doctor a complete picture of the medicines you use. Then he or she can decide the best approach for your situation.

Taking SUSTIVA with St. John's wort (*hypericum perforatum*), an herbal product sold as a dietary supplement, or products containing St. John's wort is not recommended. Talk with your doctor if you are taking or are planning to take St. John's wort. Taking St. John's wort may decrease SUSTIVA levels and lead to increased viral load and possible resistance to SUSTIVA or cross-resistance to other anti-HIV drugs.

MEDICINES YOU SHOULD NOT TAKE WITH SUSTIVA

The following medicines may cause serious and life-threatening side effects when taken with SUSTIVA. You should not take any of these medicines while taking SUSTIVA**:

- Hismanal[®] (astemizole)
- Propulsid[®] (cisapride)
- Versed[®] (midazolam)
- Halcion[®] (triazolam)
- Ergot medications (for example, Wigraine[®] and Cafergot[®])

The following medicines may need to be replaced with another medicine when taken with SUSTIVA**:

- Fortovase[®], Invirase[®] (saquinavir)
- Biaxin[®] (clarithromycin)

The following medicines may need to have their dose changed when taken with SUSTIVA**:

- Crixivan[®] (indinavir)
- Mycobutin[®] (rifabutin)
- Methadone

These are not all the medicines that may cause problems if you take SUSTIVA. Be sure to tell your doctor about all medicines that you take.

General advice about SUSTIVA:

Medicines are sometimes prescribed for conditions that are not mentioned in patient information leaflets. Do not use SUSTIVA for a condition for which it was not prescribed. Do not give SUSTIVA to other people, even if they have the same symptoms you have. It may harm them.

NDA 20-972/S-16

Page 36

Keep SUSTIVA at room temperature (77°F) in the bottle given to you by your pharmacist. The temperature can range from 59° to 86°F.

Keep SUSTIVA out of the reach of children.

This leaflet summarizes the most important information about SUSTIVA. If you would like more information, talk with your doctor. You can ask your pharmacist or doctor for the full prescribing information about SUSTIVA, or you can visit the SUSTIVA website at <http://www.sustiva.com> or call 1-800-426-7644.

*SUSTIVA[®] is a registered trademark of Bristol-Myers Squibb Pharma Company.

**The brands listed are the registered trademarks of their respective owners and are not trademarks of Bristol-Myers Squibb Company.

Distributed by:

Bristol-Myers Squibb Company

Princeton, NJ 08543 USA

xxxxxx/Rev. xxxxx, 2002