

HIGHLIGHTS OF PRESCRIBING INFORMATION

These highlights do not include all the information needed to use TARGRETIN safely and effectively. See full prescribing information for TARGRETIN.

TARGRETIN[®] (bexarotene) capsules, for oral use
Initial U.S. Approval: 1999

WARNING: BIRTH DEFECTS

See full prescribing information for complete boxed warning.

TARGRETIN is a member of the retinoid class of drugs that is associated with birth defects in humans. Bexarotene also caused birth defects when administered orally to pregnant rats. TARGRETIN must not be administered to a pregnant woman. (8.1)

INDICATIONS AND USAGE

TARGRETIN (bexarotene) is a retinoid indicated for the treatment of cutaneous manifestations of cutaneous T-cell lymphoma in patients who are refractory to at least one prior systemic therapy. (1)

DOSAGE AND ADMINISTRATION

- Recommended initial dose is 300 mg/m²/day. (2)
- Take TARGRETIN as a single oral daily dose with a meal. (2)
- Dose adjustment: may be adjusted to 200 mg/m²/day then to 100 mg/m²/day. (2)

DOSAGE FORMS AND STRENGTHS

Capsules: 75 mg (3)

CONTRAINDICATIONS

- Pregnancy (Boxed Warning, 4.1)
- Known hypersensitivity to bexarotene (4.2)

WARNINGS AND PRECAUTIONS

- Hyperlipidemia: TARGRETIN causes elevations in blood lipids. Obtain baseline values, monitor, and manage elevations during therapy by dose reduction, interruption, discontinuation and/or lipid lowering therapy. (5.1, 5.11)
- Pancreatitis: Interrupt TARGRETIN and evaluate if suspected. (5.2)
- Hepatotoxicity, cholestasis, and hepatic failure: Interrupt or discontinue TARGRETIN and evaluate if liver chemistry tests exceed three times the upper limit of normal values. (5.3)
- Hypothyroidism: TARGRETIN therapy can cause hypothyroidism. monitor and replace thyroid hormone if needed (5.5)
- Neutropenia: Monitor for neutropenia. Reduce TARGRETIN dose or interrupt as indicated. (5.6)
- Photosensitivity: Minimize exposure to sunlight and artificial ultraviolet light during treatment. (5.10)

ADVERSE REACTIONS

The most common adverse reactions (greater than 10%) include: hyperlipidemia, hypercholesterolemia, headache, hypothyroidism, asthenia, leukopenia, rash, nausea, infection, peripheral edema, abdominal pain, and dry skin. (6.1)

To report SUSPECTED ADVERSE REACTIONS, contact Valeant Pharmaceuticals North America LLC at 1-800-321-4576 or FDA at 1-800-FDA-1088 or www.fda.gov/medwatch.

See 17 for PATIENT COUNSELING INFORMATION and FDA approved patient labeling

Revised: 07/2015

FULL PRESCRIBING INFORMATION: CONTENTS*

WARNING: BIRTH DEFECTS

- INDICATIONS AND USAGE
- DOSAGE AND ADMINISTRATION
- DOSAGE FORMS AND STRENGTHS
- CONTRAINDICATIONS
- WARNINGS AND PRECAUTIONS
 - Hyperlipidemia
 - Pancreatitis
 - Hepatotoxicity, cholestasis, and hepatic failure
 - Hypothyroidism
 - Neutropenia
 - Cataracts
 - Vitamin A Supplementation Hazard
 - Hypoglycemia Risk in Patients with Diabetes Mellitus
 - Photosensitivity
 - Laboratory Tests
 - Drug/Laboratory Test Interactions
- ADVERSE REACTIONS
 - Clinical Trials Experience
- DRUG INTERACTIONS

8 USE IN SPECIFIC POPULATIONS

- Pregnancy
- Lactation
- Females and Males of Reproductive Potential
- Pediatric Use
- Geriatric Use
- Hepatic Impairment

10 OVERDOSAGE

11 DESCRIPTION

12 CLINICAL PHARMACOLOGY

- Mechanism of Action
- Pharmacokinetics

13 NONCLINICAL TOXICOLOGY

- Carcinogenesis, Mutagenesis, Impairment of Fertility

14 CLINICAL STUDIES

16 HOW SUPPLIED/STORAGE AND HANDLING

17 PATIENT COUNSELING INFORMATION

*Sections or subsections omitted from the full prescribing information are not listed.

FULL PRESCRIBING INFORMATION

WARNING: BIRTH DEFECTS

TARGRETIN is a member of the retinoid class of drugs that is associated with birth defects in humans. Bexarotene also caused birth defects when administered orally to pregnant rats. TARGRETIN must not be administered to a pregnant woman. (8.1)

1 INDICATIONS AND USAGE

TARGRETIN (bexarotene) capsules are indicated for the treatment of cutaneous manifestations of cutaneous T-cell lymphoma in patients who are refractory to at least one prior systemic therapy.

2 DOSAGE AND ADMINISTRATION

The recommended initial dose of TARGRETIN is 300 mg/m²/day (see Table 1). TARGRETIN should be taken as a single oral daily dose with a meal. For precautions to prevent pregnancy and birth defects in women of child-bearing potential [see *Use in Specific Populations (8.1)*].

Table 1: TARGRETIN Initial Dose Calculation According to Body Surface Area

Initial Dose Level (300 mg/m ² /day)		Number of 75 mg TARGRETIN Capsules
Body Surface Area (m ²)	Total Daily Dose (mg/day)	
0.88 – 1.12	300	4
1.13 – 1.37	375	5
1.38 – 1.62	450	6
1.63 – 1.87	525	7
1.88 – 2.12	600	8
2.13 – 2.37	675	9
2.38 – 2.62	750	10

Dose Modification Guidelines: The 300 mg/m²/day dose level of TARGRETIN may be adjusted to 200 mg/m²/day then to 100 mg/m²/day, or temporarily suspended, if necessitated by toxicity. When toxicity is controlled, doses may be carefully readjusted upward. If there is no tumor response after eight weeks of treatment and if the initial dose of 300 mg/m²/day is well tolerated, the dose may be escalated to 400 mg/m²/day with careful monitoring.

Duration of Therapy: In clinical trials in CTCL, TARGRETIN was administered for up to 97 weeks.

TARGRETIN should be continued as long as the patient is deriving benefit.

3 DOSAGE FORMS AND STRENGTHS

Capsules: 75 mg, off-white, oblong soft gelatin capsules, imprinted with black ink “Targretin”.

4 CONTRAINDICATIONS

4.1 Pregnancy

TARGRETIN can cause fetal harm when administered to a pregnant female. TARGRETIN is a member of the retinoid class of drugs that is associated with birth defects in humans and is contraindicated in females who are pregnant. Bexarotene was also teratogenic and caused developmental mortality when administered orally to pregnant rats. If this drug is used during pregnancy or if the patient becomes pregnant while taking this drug, the patient should be advised of the potential risk to a fetus.

4.2 Hypersensitivity

TARGRETIN capsules are contraindicated in patients with a known serious hypersensitivity to bexarotene or other components of the product.

5 WARNINGS AND PRECAUTIONS

5.1 Hyperlipidemia

TARGRETIN induces substantial elevations in lipids in most patients. About 70% of patients with CTCL who received an initial dose of ≥ 300 mg/m²/day of TARGRETIN had fasting triglyceride levels greater than 2.5 times the upper limit of normal. About 55% had values over 800 mg/dL with a median of about 1200 mg/dL in those patients. Cholesterol elevations above 300 mg/dL occurred in approximately 60% and 75% of patients with CTCL who received an initial dose of 300 mg/m²/day or greater than 300 mg/m²/day, respectively. Decreases in high density lipoprotein (HDL) cholesterol to less than 25 mg/dL were seen in about 55% and 90% of patients receiving an initial dose of 300 mg/m²/day or greater than 300 mg/m²/day, respectively, of TARGRETIN. Monitor lipid changes and treat abnormalities during therapy. The effects on triglycerides, HDL cholesterol, and total cholesterol were reversible with cessation of therapy, and could generally be mitigated by dose reduction and/or concomitant antilipemic therapy.

Perform fasting blood lipid determinations before TARGRETIN therapy is initiated and weekly until the lipid response to TARGRETIN is established, which usually occurs within two to four weeks, and monitor at eight week intervals thereafter. Fasting triglycerides should be normal or normalized with appropriate intervention prior to initiating TARGRETIN therapy. Maintain triglyceride levels below 400 mg/dL to reduce the risk of clinical sequelae [see *Warnings and Precautions (5.2)*]. If fasting triglycerides are elevated or become elevated during treatment, institute antilipemic therapy, and if necessary, reduce or interrupt the dose of TARGRETIN. In the 300 mg/m²/day initial dose group, 60% of patients were given lipid lowering drugs. Atorvastatin was used in 48% (73/152) of patients with CTCL. Because of a potential drug-drug interaction, avoid gemfibrozil use with TARGRETIN [see *Drug Interactions (7)*].

5.2 Pancreatitis

Acute pancreatitis, including a fatal case, has been reported in four patients with CTCL and in six patients with non-CTCL cancers treated with TARGRETIN; the cases were associated with marked elevations of fasting serum triglycerides, the lowest being 770 mg/dL in one patient. One patient with advanced non-CTCL cancer died of pancreatitis. Interrupt TARGRETIN and evaluate if pancreatitis is suspected. Patients with CTCL who have risk factors for pancreatitis (e.g., prior pancreatitis, uncontrolled hyperlipidemia, excessive alcohol consumption, uncontrolled diabetes mellitus, biliary tract disease, and medications known to increase triglyceride levels or to be associated with pancreatic toxicity) may be at greater risk for pancreatitis associated with TARGRETIN [see *Warnings and Precautions (5.1)*].

5.3 Hepatotoxicity, cholestasis, and hepatic failure

TARGRETIN caused elevations in liver chemistry tests (LFTs) in 5% (AST), 2% (ALT), and 0% (bilirubin) in patients with CTCL receiving an initial dose of 300 mg/m²/day. In contrast, with an initial dose greater than 300 mg/m²/day of TARGRETIN, the incidence of LFT elevations was higher at 7% (SGOT/AST), 9% (SGPT/ALT), and 6% (bilirubin). Two patients developed cholestasis, including one patient who died of liver failure. In clinical trials, elevated LFTs resolved within one month in 80% of patients following a decrease in dose or discontinuation of therapy. Obtain baseline LFTs and monitor LFTs after one, two and four weeks of treatment initiation, and if stable, at least every eight weeks thereafter during treatment. Interrupt or discontinue TARGRETIN if test results exceed three times the upper limit of normal values for AST, ALT, or bilirubin.

5.4 Hypothyroidism

TARGRETIN induces hypothyroidism in about half of all patients treated by causing a reversible reduction in levels of thyroid hormone (total thyroxine [total T4]) and thyroid-stimulating hormone (TSH). The incidence of decreases in TSH and total T4 were about 60% and 45%, respectively, in patients with CTCL receiving an initial dose of 300 mg/m²/day. Hypothyroidism was reported as an adverse event in 29% of patients. Consider treatment with thyroid hormone supplementation in patients with

hypothyroidism. In the 300 mg/m²/day initial dose group, 37% of patients were treated with thyroid hormone replacement. Obtain baseline thyroid function tests and patients monitor during treatment.

5.5 Neutropenia

Leukopenia in the range of 1000 to <3000 WBC x 10⁶/L occurred in 18% of patients with CTCL receiving an initial dose of 300 mg/m²/day of TARGRETIN . Patients receiving an initial dose greater than 300 mg/m²/day of TARGRETIN had an incidence of leukopenia of 43%. No patient with CTCL treated with TARGRETIN developed leukopenia of less than 1000 WBC x 10⁶/L. The usual time to onset of leukopenia was four to eight weeks after initiating TARGRETIN. The leukopenia observed in most patients was predominately neutropenia. In the 300 mg/m²/day initial dose group, the incidence of NCI Grade 3 and Grade 4 neutropenia, respectively, was 12% and 4%. The leukopenia and neutropenia experienced during TARGRETIN therapy resolved after dose reduction or discontinuation of treatment, on average within 30 days in 93% of the patients with CTCL and 82% of patients with non-CTCL cancers. Leukopenia and neutropenia were rarely associated with severe sequelae or serious adverse events. Obtain complete blood counts (CBC) at baseline and periodically during treatment.

5.6 Cataracts

Posterior subcapsular cataracts occurred in preclinical toxicity studies in rats and dogs administered bexarotene daily for 6 months. New cataracts or worsening of previous cataracts occurred in 15 of 79 patients who were monitored with serial slit lamp examinations. Because of the high prevalence and rate of cataract formation in older patient populations, the relationship of TARGRETIN and cataracts cannot be determined in the absence of an appropriate control group. Patients treated with TARGRETIN who experience visual difficulties should have an appropriate ophthalmologic evaluation.

5.7 Vitamin A Supplementation Hazard

In clinical studies, patients were advised to limit vitamin A intake to ≤15,000 IU/day. Because of the relationship of bexarotene to vitamin A, patients should be advised to limit vitamin A supplements to avoid potential additive toxic effects.

5.8 Hypoglycemia Risk in Patients with Diabetes Mellitus

In patients using insulin, agents enhancing insulin secretion (e.g., sulfonylureas), or insulin-sensitizers (e.g., thiazolidinedione class), based on the mechanism of action, TARGRETIN could enhance the action of these agents, resulting in hypoglycemia. Hypoglycemia has not been associated with the use of TARGRETIN as monotherapy.

5.9 Photosensitivity

Retinoids as a class have been associated with photosensitivity. *In vitro* assays indicate that bexarotene is a potential photosensitizing agent. Phototoxicity manifested as sunburn and skin sensitivity to sunlight occurred in patients who were exposed to direct sunlight while receiving TARGRETIN. Advise patients to minimize exposure to sunlight and artificial ultraviolet light while receiving TARGRETIN.

5.10 Laboratory Tests

Before initiating TARGRETIN therapy, obtain a CBC, fasting lipid profile, liver function tests, and a thyroid profile. Fasting triglycerides should be normal or normalized with appropriate intervention prior to therapy. Monitor lab tests during TARGRETIN therapy as described above.

Hyperlipidemia usually occurs within the initial two to four weeks. Therefore, weekly lipid determinations are recommended during this interval. Subsequently, in patients not hyperlipidemic, determinations can be performed less frequently [*see Warnings and Precautions (5.1)*].

A white blood cell count with differential should be obtained at baseline and periodically during treatment. Baseline liver function tests should be obtained and should be carefully monitored after one, two and four weeks of treatment initiation, and if stable, periodically thereafter during treatment. Baseline thyroid function tests should be obtained and then monitored during treatment as indicated [*see Warnings and Precautions (5.3, 5.4, 5.5, 5.6)*].

5.11 Drug/Laboratory Test Interactions

CA125 assay values in patients with ovarian cancer may be increased by TARGRETIN therapy.

6 ADVERSE REACTIONS

The following serious adverse reactions are discussed in greater detail in other sections of the prescribing information:

- Hyperlipidemia [*see Warnings and Precautions (5.1)*]
- Pancreatitis [*see Warnings and Precautions (5.2)*]
- Hepatotoxicity, cholestasis, and hepatic failure [*see Warnings and Precautions (5.3)*]
- Hypothyroidism [*see Warnings and Precautions (5.4)*]
- Neutropenia [*see Warnings and Precautions (5.5)*]

- Cataracts [*see Warnings and Precautions (5.6)*]
- Vitamin A Supplementation Hazard [*see Warnings and Precautions (5.7)*]
- Hypoglycemia Risk in Patients with Diabetes Mellitus [*see Warnings and Precautions (5.8)*]
- Photosensitivity [*see Warnings and Precautions (5.9)*]
- Laboratory Tests [*see Warnings and Precautions (5.10)*]
- Drug/Laboratory Test Interactions [*see Warnings and Precautions (5.11)*]

6.1 Clinical Trials Experience

Because clinical trials are conducted under widely varying conditions, adverse reaction rates observed in the clinical trials of a drug cannot be directly compared to rates in the clinical trials of another drug and may not reflect the rates observed in practice.

The safety of TARGRETIN has been evaluated in two clinical trials of 152 patients with CTCL who received TARGRETIN for up to 97 weeks and in 352 patients in other trials. The mean duration of therapy for the 152 patients with CTCL was 166 days. The most common adverse events reported with an incidence of at least 10% in patients with CTCL treated at an initial dose of 300 mg/m²/day of TARGRETIN are shown in Table 2. The events at least possibly related to treatment are lipid abnormalities (elevated triglycerides, elevated total and LDL cholesterol and decreased HDL cholesterol), hypothyroidism, headache, asthenia, rash, leukopenia, anemia, nausea, infection, peripheral edema, abdominal pain, and dry skin. Most adverse events occurred at a greater incidence in patients treated at starting doses of greater than 300 mg/m²/day (see Table 2).

Adverse reactions leading to TARGRETIN dose reduction or discontinuation in at least two patients were hyperlipemia, neutropenia/leukopenia, diarrhea, fatigue/lethargy, hypothyroidism, headache, liver function test abnormalities, rash, pancreatitis, nausea, anemia, allergic reaction, muscle spasm, pneumonia, and confusion.

The NCI Grade 3 and NCI Grade 4 adverse reactions reported in two or more patients with CTCL treated at an initial dose of 300 mg/m²/day of TARGRETIN (see Table 3) were hypertriglyceridemia, pruritus, headache, peripheral edema, leukopenia, rash, and hypercholesteremia. Most of these moderately severe or severe adverse events occurred at a higher rate in patients treated at starting doses of greater than 300 mg/m²/day than in patients treated at a starting dose of 300 mg/m²/day.

In patients with CTCL receiving an initial dose of 300 mg/m²/day, the incidence of NCI Grade 3 or 4 elevations in triglycerides and total cholesterol was 28% and 25%, respectively (Table 4). In contrast, in

patients with CTCL receiving greater than 300 mg/m²/day, the incidence of NCI Grade 3 or 4 elevated triglycerides and total cholesterol was 45% and 45%, respectively. Other Grade 3 and 4 laboratory abnormalities are shown in Table 3.

In addition to the 152 patients enrolled in the two CTCL trials, 352 patients received TARGRETIN as monotherapy for various advanced malignancies at doses from 5 mg/m²/day to 1000 mg/m²/day. The common adverse reactions (incidence greater than 10%) were similar to those seen in patients with CTCL.

In the 504 patients (CTCL and non-CTCL) who received TARGRETIN as monotherapy, drug-related serious adverse reactions that were fatal, in one patient each, were acute pancreatitis, subdural hematoma, and liver failure.

In the patients with CTCL receiving an initial dose of 300 mg/m²/day of TARGRETIN, adverse reactions reported at an incidence of less than 10% and not included in Tables 2-4 or discussed in other parts of labeling and possibly related to treatment were as follows:

Body as a Whole: chills, cellulitis, chest pain, breast pain, sepsis, and monilia infection.

Cardiovascular: hemorrhage, hypertension, angina pectoris, right heart failure, syncope, and tachycardia.

Digestive: constipation, dry mouth, flatulence, colitis, dyspepsia, cheilitis, gastroenteritis, gingivitis, liver failure, and melena.

Hemic and Lymphatic: eosinophilia, thrombocythemia, coagulation time increased, lymphocytosis, and thrombocytopenia.

Metabolic and Nutritional: LDH increased, creatinine increased, hypoproteinemia, hyperglycemia, weight decreased, weight increased, and amylase increased.

Musculoskeletal: arthralgia, myalgia, bone pain, myasthenia, and arthrosis.

Nervous: depression, agitation, ataxia, cerebrovascular accident, confusion, dizziness, hyperesthesia, hypesthesia, and neuropathy.

Respiratory: pharyngitis, rhinitis, dyspnea, pleural effusion, bronchitis, cough increased, lung edema, hemoptysis, and hypoxia.

Skin and Appendages: skin ulcer, acne, alopecia, skin nodule, macular papular rash, pustular rash, serous drainage, and vesicular bullous rash.

Special Senses: dry eyes, conjunctivitis, ear pain, blepharitis, corneal lesion, keratitis, otitis externa, and visual field defect.

Urogenital: albuminuria, hematuria, urinary incontinence, urinary tract infection, urinary urgency, dysuria, and kidney function abnormal.

Table 2: Adverse Events with Incidence $\geq 10\%$ in CTCL Trials

	Initial Assigned Dose Group (mg/m ² /day)	
	300	>300
Body System	N=84	N=53
Adverse Event ^{1,2}	N (%)	N (%)
METABOLIC AND NUTRITIONAL DISORDERS		
Hyperlipemia	66 (79)	42 (79)
Hypercholesteremia	27 (32)	33 (62)
Lactic dehydrogenase increased	6 (7)	7 (13)
BODY AS A WHOLE		
Headache	25 (30)	22 (42)
Asthenia	17 (20)	24 (45)
Infection	11 (13)	12 (23)
Abdominal pain	9 (11)	2 (4)
Chills	8 (10)	7 (13)
Fever	4 (5)	9 (17)
Flu syndrome	3 (4)	7 (13)
Back pain	2 (2)	6 (11)
Infection bacterial	1 (1)	7 (13)
ENDOCRINE		
Hypothyroidism	24 (29)	28 (53)
SKIN AND APPENDAGES		
Rash	14 (17)	12 (23)
Dry skin	9 (17)	5 (9)
Exfoliative dermatitis	8 (10)	15 (28)
Alopecia	3 (4)	6 (11)
HEMIC AND LYMPHATIC SYSTEM		

Leukopenia	14 (17)	25 (47)
Anemia	5 (6)	13 (25)
Hypochromic anemia	3 (4)	7 (13)
DIGESTIVE SYSTEM		
Nausea	13 (16)	4 (8)
Diarrhea	6 (7)	22 (42)
Vomiting	3 (4)	7 (13)
Anorexia	2 (2)	12 (23)
CARDIOVASCULAR SYSTEM		
Peripheral edema	11 (13)	6 (11)
NERVOUS SYSTEM		
Insomnia	4 (5)	6 (11)

¹ Preferred English term coded according to Ligand-modified COSTART 5 Dictionary.

² Patients are counted at most once in each AE category.

Table 3: Incidence of Moderately Severe and Severe Adverse Events Reported in at Least Two Patients (CTCL Trials)

Body System Adverse Event ^{1,2}	Initial Assigned Dose Group (mg/m ² /day)			
	300 (N=84)		>300 (N=53)	
	Mod Sev	Severe	Mod Sev	Severe
	N (%)	N (%)	N (%)	N (%)
BODY AS A WHOLE				
Asthenia	1 (1)	0 (0)	11 (21)	0 (0)
Headache	3 (4)	0 (0)	5 (9)	1 (2)
Infection bacterial	1 (1)	0 (0)	0 (0)	2 (4)
CARDIOVASCULAR SYS.				
Peripheral edema	2 (2)	1 (1)	0 (0)	0 (0)
DIGESTIVE SYSTEM				
Anorexia	0 (0)	0 (0)	3 (6)	0 (0)
Diarrhea	1 (1)	1 (1)	2 (4)	1 (2)
Pancreatitis	1 (1)	0 (0)	3 (6)	0 (0)
Vomiting	0 (0)	0 (0)	2 (4)	0 (0)

ENDOCRINE				
Hypothyroidism	1 (1)	1 (1)	2 (4)	0 (0)
HEM. & LYMPH. SYS.				
Leukopenia	3 (4)	0 (0)	6 (11)	1 (2)
META. AND NUTR. DIS.				
Bilirubinemia	0 (0)	1 (1)	2 (4)	0 (0)
Hypercholesteremia	2 (2)	0 (0)	5 (9)	0 (0)
Hyperlipemia	16 (19)	6 (7)	17 (32)	5 (9)
SGOT/AST increased	0 (0)	0 (0)	2 (4)	0 (0)
SGPT/ALT increased	0 (0)	0 (0)	2 (4)	0 (0)
RESPIRATORY SYSTEM				
Pneumonia	0 (0)	0 (0)	2 (4)	2 (4)
SKIN AND APPENDAGES				
Exfoliative dermatitis	0 (0)	1 (1)	3 (6)	1 (2)
Rash	1 (1)	2 (2)	1 (2)	0 (0)

¹ Preferred English term coded according to Ligand-modified COSTART 5 Dictionary.

² Patients are counted at most once in each AE category. Patients are classified by the highest severity within each row.

Table 4: Treatment-Emergent Abnormal Laboratory Values in CTCL Trials

Analyte	Initial Assigned Dose (mg/m ² /day)			
	300		>300	
	N=83 ¹		N=53 ¹	
	Grade 3 ² (%)	Grade 4 ² (%)	Grade 3 (%)	Grade 4 (%)

Triglycerides ³	21	7	32	14
Total Cholesterol ³	19	7	16	30
Alkaline Phosphatase	1	0	0	2
Hyperglycemia	1	0	6	0
Hypocalcemia	1	0	0	0
Hyponatremia	1	0	9	0
SGPT/ALT	1	0	2	2
Hyperkalemia	0	0	2	0
Hypernatremia	0	1	0	0
SGOT/AST	0	0	2	2
Total Bilirubin	0	0	0	2
ANC decreased	12	4	19	8
ALC decreased	7	0	15	0
WBC decreased	4	0	11	0
Hemoglobin decreased	0	0	2	0

¹ Number of patients with at least one analyte value post-baseline.

² Adapted from NCI Common Toxicity Criteria, Grade 3 and 4, Version 2.0. Patients are considered to have had a Grade 3 or 4 value if either of the following occurred: a) Value becomes Grade 3 or 4 during the study; b) Value is abnormal at baseline and worsens to Grade 3 or 4 on study, including all values beyond study drug discontinuation, as defined in data handling conventions.

³ The denominator used to calculate the incidence rates for fasting Total Cholesterol and Triglycerides were N=75 for the 300 mg/m²/day initial dose group and N=44 for the >300 mg/m²/day initial dose group.

The safety profile from the one post-approval trial with 59 subjects was generally comparable to that of the pivotal trials with the exception of serious adverse events hypertriglyceridemia, neutropenia and bone marrow failure which were observed more frequently in the TARGRETIN 300 mg/m²/day group than in the TARGRETIN 150 mg/m²/day group.

Severe hypertriglyceridemia (≥800 mg/dL) was not seen in any subject in the lower dosage arm.

The most common AEs by preferred term in either the TARGRETIN 300 or 150 mg/m²/day treatment group were as follows: hypertriglyceridemia (18 subjects [62.1%] and 17 subjects [56.7%], respectively); hypothyroidism (15 subjects [51.7%] and 13 subjects [43.3%], respectively); headache (9 subjects

[31.0%] and 7 subjects [23.3%], respectively); hypercholesterolemia (8 subjects [27.6%] and 7 subjects [23.3%], respectively); neutropenia (7 subjects [24.1%] and 2 subjects [6.7%], respectively); and skin exfoliation (5 subjects [17.2%] and 5 subjects [16.7%], respectively).

Higher percentage of subjects in the TARGRETIN 300 mg/m²/day group than in the TARGRETIN 150 mg/m²/day group experienced SAEs (13 subjects [44.8%] vs 11 subjects [36.7%], respectively).

Of the SAEs of special interest, there were more events in the TARGRETIN 300 mg/m²/day group than in TARGRETIN 150 mg/m²/day group of bone marrow failure (3 [10.3%] vs 1 [3.3%, respectively]), neutropenia (3 [10.3%] vs 0 [0%], respectively), and of hypertriglyceridemia (9 [31%] vs 2 [6.7%], respectively).

7 DRUG INTERACTIONS

Effect of Other Drugs on TARGRETIN

Gemfibrozil: Concomitant administration of TARGRETIN and gemfibrozil resulted in increases in plasma concentrations of bexarotene. Concomitant administration of gemfibrozil with TARGRETIN is not recommended.

Effect of TARGRETIN on Other Drugs

TARGRETIN may be an inducer for the CYP3A4 enzymes, and may reduce plasma concentrations of other substrates metabolized by CYP3A4. Drug products which may be affected include oral or other systemic hormonal contraceptives. Thus, if treatment with TARGRETIN is intended for a female with reproductive potential, it is strongly recommended that a non-hormonal contraception be considered. [see *Use in Specific Populations (8.3), Clinical Pharmacology (12.3)*].

Laboratory Test Interference

CA125 assay values in patients with ovarian cancer may be increased by TARGRETIN therapy.

8 USE IN SPECIFIC POPULATIONS

8.1 Pregnancy

Risk Summary

TARGRETIN, a retinoid, can cause fetal harm based on findings from animal studies when administered to a pregnant female and is contraindicated during pregnancy. Bexarotene was teratogenic and caused

developmental mortality in rats following oral administration during organogenesis [see Data]. TARGRETIN must not be given to a pregnant female or a female who intends to become pregnant. If pregnancy does occur during treatment with TARGRETIN, immediately discontinue the drug and advise the pregnant female of the potential risk to a fetus.

The background risk of major birth defects and miscarriage for the indicated populations are unknown. However, the background risk in the U.S. general population of major birth defects is 2-4% and of miscarriage is 15-20% of clinically recognized pregnancies.

Data

Animal Data

Bexarotene caused malformations when administered orally to pregnant rats during days 7-17 of gestation. Developmental abnormalities included incomplete ossification at 4 mg/kg/day and cleft palate, depressed eye bulge/microphthalmia, and small ears at 16 mg/kg/day. The plasma AUC of bexarotene in rats at 4 mg/kg/day is approximately one third the AUC in humans at the recommended daily dose. At doses greater than 10 mg/kg/day, bexarotene caused developmental mortality. The no effect dose for fetal effects in rats was 1 mg/kg/day (producing an AUC approximately one sixth of the AUC at the recommended human daily dose).

8.2 Lactation

Risk Summary

There is no information regarding the presence of TARGRETIN in human milk, the effects on the breast fed infant, or the effects on milk production. Because many drugs are excreted in human milk and because of the potential for serious adverse reactions in nursing infants from TARGRETIN, discontinue breastfeeding during treatment with TARGRETIN.

8.3 Females and Males of Reproductive Potential

Pregnancy Testing

Obtain a negative serum pregnancy test (e.g., serum beta-human chorionic gonadotropin [beta-HCG]) with a sensitivity of at least 50 mIU/L within one week prior to TARGRETIN therapy. Obtain another pregnancy test at monthly intervals while the patient remains on TARGRETIN.

Contraception

Females

TARGRETIN can cause fetal harm when administered to a pregnant female [see *Use in Specific Populations (8.1)*]. Females of reproductive potential should be advised to avoid becoming pregnant when TARGRETIN is used. Effective contraception must be used for one month prior to the initiation of therapy, during therapy and for at least one month following discontinuation of therapy; it is recommended that two reliable forms of contraception be used simultaneously unless abstinence is the chosen method. Bexarotene can potentially induce metabolic enzymes and thereby theoretically reduce the plasma concentrations of oral or other systemic hormonal contraceptives [see *Drug Interactions (7)*]. Thus, if treatment with TARGRETIN is intended in a female with reproductive potential, it is strongly recommended that one of the two reliable forms of contraception should be non-hormonal. TARGRETIN therapy should be initiated on the second or third day of a normal menstrual period. No more than a one month supply of TARGRETIN should be given to the patient so that the results of pregnancy testing can be assessed and counseling regarding avoidance of pregnancy and birth defects can be reinforced.

Males

Male patients with sexual partners who are pregnant, possibly pregnant, or who could become pregnant must use condoms during sexual intercourse while taking TARGRETIN and for at least one month after the last dose of drug.

8.4 Pediatric Use

Safety and effectiveness of TARGRETIN in pediatric patients have not been established.

8.5 Geriatric Use

Of the total patients with CTCL in clinical trials of TARGRETIN, 64% were 60 years or older, while 33% were 70 years or older. No overall differences in safety were observed between patients 70 years or older and younger patients, but greater sensitivity of some older individuals to TARGRETIN cannot be ruled out. Responses to TARGRETIN were observed across all age group decades, without preference for any individual age group decade.

8.6 Hepatic Impairment

No specific studies have been conducted with TARGRETIN in subjects with hepatic impairment. Hepatic impairment is expected to lead to decreased clearance [see *Clinical Pharmacology (12.3)*]. If TARGRETIN is used in patients with hepatic impairment, monitor for signs of toxicity that may be due to increased exposure.

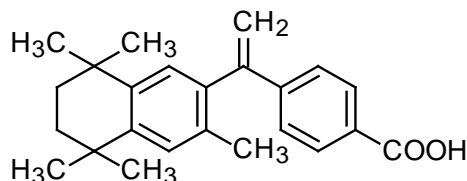
10 OVERDOSAGE

Doses up to 1000 mg/m²/day of TARGRETIN have been administered in short-term trials in patients with advanced cancer without acute toxic effects. Single doses of 1500 mg/kg and 720 mg/kg were tolerated without significant toxicity in rats and dogs, respectively. These doses are approximately 30 and 50 times, respectively, the recommended human dose on a mg/m² basis.

11 DESCRIPTION

TARGRETIN (bexarotene) capsules contain bexarotene, a member of a subclass of retinoids that selectively activate retinoid X receptors (RXRs). These retinoid receptors have biologic activity distinct from that of retinoic acid receptors (RARs).

The chemical name of bexarotene is 4-[1-(5,6,7,8-tetrahydro-3,5,5,8,8-pentamethyl-2-naphthalenyl)ethenyl] benzoic acid, and the structural formula is as follows:



Bexarotene is an off-white to white powder with a molecular weight of 348.48 and a molecular formula of C₂₄H₂₈O₂. It is insoluble in water and slightly soluble in vegetable oils and ethanol, USP.

Each TARGRETIN capsule contains 75 mg of bexarotene for oral administration. It also contains the following inactive ingredients: polyethylene glycol 400, NF, polysorbate 20, NF, povidone, USP, and butylated hydroxyanisole, NF. The capsule shell contains gelatin, NF, sorbitol special-glycerin blend, and titanium dioxide, USP.

12 CLINICAL PHARMACOLOGY

12.1 Mechanism of Action

Bexarotene selectively binds and activates retinoid X receptor subtypes (RXR α , RXR β , RXR γ). RXRs can form heterodimers with various receptor partners such as retinoic acid receptors (RARs), vitamin D receptor, thyroid receptor, and peroxisome proliferator activator receptors (PPARs). Once activated, these receptors function as transcription factors that regulate the expression of genes that control cellular differentiation and proliferation. Bexarotene inhibits the growth *in vitro* of some tumor cell lines

of hematopoietic and squamous cell origin. It also induces tumor regression *in vivo* in some animal models. The exact mechanism of action of bexarotene in the treatment of cutaneous T-cell lymphoma (CTCL) is unknown.

12.3 Pharmacokinetics

Terminal half-life of bexarotene is approximately seven hours. Studies in patients with advanced malignancies show approximate single dose linearity within the therapeutic range.

Absorption

After oral administration of TARGRETIN, bexarotene is absorbed with a T_{max} of about two hours. Plasma bexarotene AUC and C_{max} values resulting from a 75 to 300 mg dose were 35% and 48% higher, respectively, after a fat-containing meal than after a glucose solution.

Distribution

Bexarotene is highly bound (>99%) to plasma proteins. The plasma proteins to which bexarotene binds have not been elucidated, and the ability of bexarotene to displace drugs bound to plasma proteins and the ability of drugs to displace bexarotene binding have not been studied

Elimination

Metabolism

Four bexarotene metabolites have been identified in plasma: 6- and 7-hydroxy-bexarotene and 6- and 7-oxo-bexarotene. In vitro studies suggest that cytochrome P450 3A4 is the major cytochrome P450 responsible for formation of the oxidative metabolites and that the oxidative metabolites may be glucuronidated. The oxidative metabolites are active in in vitro assays of retinoid receptor activation, but the relative contribution of the parent and any metabolites to the efficacy and safety of TARGRETIN is unknown.

Excretion

The renal elimination of bexarotene and its metabolites was examined in patients with Type 2 diabetes mellitus. Urinary elimination of bexarotene and its known metabolites is a minor excretory pathway (<1% of administered dose).

Pharmacokinetics in Specific Populations

Age: Based on the population pharmacokinetic analysis of data for 232 patients aged ≥ 65 years and 343 patients aged <65 years, age has no statistically significant effect on bexarotene pharmacokinetics.

Body Weight and Gender: Based on the population pharmacokinetics analysis of data for 614 patients with a weight range of 26 to 145 kg, the bexarotene apparent clearance increases with increasing body weight. Gender has no statistically significant effect on bexarotene pharmacokinetics.

Race: Based on the population pharmacokinetic analysis of data for 540 Caucasian and 44 Black patients, bexarotene pharmacokinetics are similar in Blacks and Caucasians. There are insufficient data to evaluate potential differences in the pharmacokinetics of bexarotene for other races.

Renal Impairment: No formal studies have been conducted with TARGRETIN in patients with renal impairment. Urinary elimination of bexarotene and its known metabolites is a minor excretory pathway (<1% of administered dose), but because renal impairment can result in significant protein binding changes, pharmacokinetics may be altered in patients with renal impairment.

Hepatic Impairment: No specific studies have been conducted with TARGRETIN in patients with hepatic impairment. Because less than 1% of the dose is excreted in the urine unchanged and there is in vitro evidence of extensive hepatic contribution to bexarotene elimination, hepatic impairment would be expected to lead to greatly decreased clearance.

Drug Interactions

Effect of Other Drugs on TARGRETIN

CYP3A4 Inhibitors/Inducers: In a clinical study, concomitant administration of multiple doses of ketoconazole with TARGRETIN did not alter bexarotene plasma concentrations. This suggests that bexarotene elimination is not dependent on CYP3A4 metabolism.

Paclitaxel plus Carboplatin: The co-administration of paclitaxel (200 mg/m² IV dose over 3 hours) plus carboplatin (at a dose expected to achieve an AUC of 6 mg•min/mL) with TARGRETIN (400 mg/m² orally once daily) increased the exposure to bexarotene (AUC₀₋₂₄ and C_{max}) by 2-fold compared to TARGRETIN alone.

Atorvastatin: Bexarotene concentrations were not affected by concomitant atorvastatin administration.

Effect of TARGRETIN on Other Drugs

Bexarotene did not significantly inhibit the following enzymes in human liver microsomes: CYP1A2, CYP2A6, CYP2C9, CYP2C19, CYP2D6, CYP2E1 and CYP3A4. *In vitro* data suggested a potential for bexarotene to inhibit CYP2C8 and induce CYP3A4.

Atorvastatin: The exposure (AUC) to atorvastatin (a substrate for CYP3A4) decreased by half when atorvastatin was co-administered with TARGRETIN (400 mg/m² orally once daily).

Tamoxifen: Based on interim data, concomitant administration of TARGRETIN and tamoxifen resulted in approximately a 35% decrease in plasma concentrations of tamoxifen, possibly through induction of CYP3A4 by bexarotene.

Paclitaxel: The exposure (AUC) to paclitaxel (a substrate for CYP3A4 and CYP2C8) decreased by 19% when paclitaxel (200 mg/m² IV dose over 3 hours) was co-administered with TARGRETIN (400 mg/m² orally once daily).

Carboplatin: The co-administration of TARGRETIN (400 mg/m² orally once daily) had no effect on the exposure to free or total carboplatin.

13 NONCLINICAL TOXICOLOGY

13.1 Carcinogenesis, Mutagenesis, Impairment of Fertility

Long-term studies in animals to assess the carcinogenic potential of bexarotene have not been conducted. Bexarotene is not mutagenic to bacteria (Ames assay) or mammalian cells (mouse lymphoma assay). Bexarotene was not clastogenic *in vivo* (micronucleus test in mice).

No formal fertility studies were conducted with bexarotene. Bexarotene caused testicular degeneration when oral doses of 1.5 mg/kg/day were given to dogs for 91 days (producing an AUC of approximately one fifth the AUC at the recommended human daily dose).

14 CLINICAL STUDIES

TARGRETIN was evaluated in two clinical trials in 152 patients with advanced and early stage cutaneous T-cell lymphoma (CTCL) in two multicenter, open-label, historically-controlled clinical trials conducted in the U.S., Canada, Europe, and Australia.

The advanced disease patients had disease refractory to at least one prior systemic therapy (median of two, range one to six prior systemic therapies) and had been treated with a median of five (range 1 to 11) prior systemic, irradiation, and/or topical therapies. Early disease patients were intolerant to, had disease that was refractory to, or had reached a response plateau of six months on, at least two prior therapies. The patients entered had been treated with a median of 3.5 (range 2 to 12) therapies (systemic, irradiation, and/or topical).

The two clinical trials enrolled a total of 152 patients, 102 of whom had disease refractory to at least one prior systemic therapy, 90 with advanced disease and 12 with early disease. This is the patient population for whom TARGRETIN is indicated.

Patients were initially treated with a starting dose of 650 mg/m²/day with a subsequent reduction of starting dose to 500 mg/m²/day. Neither of these starting doses was tolerated, and the starting dose was then reduced to 300 mg/m²/day. If, however, a patient on 300 mg/m²/day of TARGRETIN showed no response after eight or more weeks of therapy, the dose could be increased to 400 mg/m²/day.

Tumor response was assessed in both trials by observation of up to five baseline-defined index lesions using a Composite Assessment of Index Lesion Disease Severity (CA). This endpoint was based on a summation of the grades, for all index lesions, of erythema, scaling, plaque elevation, hypopigmentation or hyperpigmentation, and area of involvement. Also considered in response assessment was the presence or absence of cutaneous tumors and extracutaneous disease manifestations.

All tumor responses required confirmation over at least two assessments separated by at least four weeks. A partial response was defined as an improvement of at least 50% in the index lesions without worsening, or development of new cutaneous tumors or non-cutaneous manifestations. A complete clinical response required complete disappearance of all manifestations of disease, but did not require confirmation by biopsy.

At the initial dose of 300 mg/m²/day, 1/62 (1.6%) of patients had a complete clinical tumor response and 19/62 (30%) of patients had a partial tumor response. The rate of relapse (25% increase in CA or worsening of other aspects of disease) in the 20 patients who had a tumor response was 6/20 (30%) over a median duration of observation of 21 weeks, and the median duration of tumor response had not been reached. Responses were seen as early as 4 weeks and new responses continued to be seen at later visits.

In one post-approval clinical trial with a total of 59 subjects (29 in 300 mg/m²/day dose group and 30 in the 150 mg/m²/day dose), the objective response rate was higher in the TARGRETIN 300 mg/m²/day group than in the TARGRETIN 150 mg/m²/day group with respect to the CA (34.5% vs 23.3%), Physicians Global Assessment (PGA) (37.9% vs 20.0%), and percent BSA involvement (34.5% vs 23.3%).

The median duration of response in the TARGRETIN 300 mg/m²/day group based on the CA, PGA, and percent BSA involvement was 86.5 days, 72.0 days and 60.0 days respectively. While in the TARGRETIN 150 mg/m²/day group the median duration of response based on the CA, PGA, and percent BSA involvement was 55 days, 119.0 days and 118.0 days respectively .

The median time to cutaneous tumor response (the time to cutaneous tumor response for a given subject is defined as the time interval from the first day of TARGRETIN treatment to the time of the first observation when the subject with subsequent confirmation of response meets criteria for CR, CCR or PR) in the TARGRETIN 300 mg/m²/day group based on the CA, PGA, and percent BSA involvement was 85 days, 98 days and 117.5 days respectively. While in the TARGRETIN 150 mg/m²/day group the median time to cutaneous tumor response based on the CA, PGA, and percent BSA involvement was 87

days, 57 days and 57 days respectively. In the TARGRETIN 300 mg/m²/day group, the median time to cutaneous tumor progression based on the CA, PGA, and percent BSA involvement was 77.5, 115.5, and 88.0 days, respectively. In the TARGRETIN 150 mg/m²/day group, the median time to cutaneous tumor progression was 203.0 days based on the CA and 86.0 days based on percent BSA involvement; no subject in this treatment group had cutaneous tumor progression based on the PGA.

16 HOW SUPPLIED/STORAGE AND HANDLING

TARGRETIN Capsules are supplied as 75 mg off-white, oblong soft gelatin capsules, imprinted with “Targretin”, in high density polyethylene bottles with child-resistant closures.

Bottles of 100 capsules: NDC 0187-5526-75

Store at 2°-25°C (36°-77°F). Avoid exposing to high temperatures and humidity after the bottle is opened. Protect from light.

17 PATIENT COUNSELING INFORMATION

Advise the patient to read the FDA-approved patient labeling (Patient Information).

Inform the patient or caregiver about the following:

Birth Defects

Advise patients that TARGRETIN is contraindicated in pregnancy [*see Contraindications (4.1)*].

TARGRETIN is a member of the retinoid class of drugs that is associated with birth defects in humans [*see Use In Specific Populations (8.1)*].

- Advise females of reproductive potential that they must avoid pregnancy while taking TARGRETIN and for at least one month following discontinuation of therapy.
- Advise females of reproductive potential of the importance of monthly pregnancy testing while taking TARGRETIN.
- Advise females of reproductive potential to use effective contraception for one month prior to the initiation of therapy, during therapy, and for at least one month following discontinuation of therapy and that two reliable forms of contraception should be used simultaneously, one of which should be non-hormonal.

- Advise females of reproductive potential that TARGRETIN therapy should be initiated on the second or third day of a normal menstrual period.
- Instruct patient to immediately stop taking TARGRETIN if she becomes pregnant while taking this drug.
- Advise male patients with sexual partners who are pregnant, possibly pregnant, or who could become pregnant that they must use condoms during sexual intercourse while taking TARGRETIN and for at least one month after the last dose of the drug.

Pancreatitis

Advise patients of the risk of developing pancreatitis, which may be accompanied by nausea, vomiting, and abdominal or back pain and to immediately contact their healthcare provider if these symptoms occur [see *Warnings and Precautions (5.2)*].

Hepatotoxicity

Inform patients of the possibility of developing liver function abnormalities and serious hepatic toxicity. Advise patients to immediately contact their healthcare provider if signs of liver failure occur, including jaundice, anorexia, bleeding, or bruising [see *Warnings and Precautions (5.3)*].

Neutropenia

Advise patients of the possibility of developing neutropenia and to immediately contact their healthcare provider should they develop a fever, particularly in association with any suggestion of infection [see *Warnings and Precautions (5.5)*].

Cataracts

Advise patients of the possibility of developing new or worsening cataracts and to inform their healthcare provider about any changes in their vision during treatment with TARGRETIN [see *Warnings and Precautions (5.6)*].

Vitamin A Supplementation Hazard

Advise patients to limit vitamin A intake to $\leq 15,000$ IU/day to avoid potential additive toxic effects.

Hypoglycemia and Diabetes Mellitus

Advise patients of the possibility of developing hypoglycemia when using insulin, agents enhancing insulin secretion, or insulin-sensitizers while on TARGRETIN therapy. Instruct patients on these medications to check their blood sugar frequently and to notify their physicians of any changes in blood sugar level [see *Warnings and Precautions (5.8)*].

Photosensitivity

Advise patients of potential increased skin sensitivity to sunlight while taking TARGRETIN and to minimize exposure to sunlight and artificial ultraviolet light [see *Warnings and Precautions (5.9)*].

Laboratory Tests

Advise patients of laboratory testing which will occur during therapy to monitor lipids, liver function, thyroid function, and white blood cell counts [see *Warnings and Precautions (5.10)*]. If applicable, advise patients of monthly pregnancy testing [see *Use In Specific Populations (8.3)*].

Administration Instructions

Advise patients to take TARGRETIN with a meal [see *DOSAGE AND ADMINISTRATION*].

Manufactured for:

Valeant Pharmaceuticals North America LLC

Bridgewater, NJ 08807 USA

Manufactured by:

Catalent Pharma Solutions LLC

St. Petersburg, FL 33716

Targretin[®] is a registered trademark of Valeant Pharmaceuticals International, Inc. All other trademarks or registered trademarks are the trademarks or registered trademarks of their respective owners.

© 2015 Valeant Pharmaceuticals International, Inc.

9391502

Patient Information
TARGRETIN® (tar-GRET-in)
(bexarotene)
capsules

What is the most important information I should know about TARGRETIN?

TARGRETIN can cause serious side effects, including major birth defects to an unborn baby, if taken during pregnancy.

For females who can become pregnant:

- **You should avoid becoming pregnant during treatment with TARGRETIN.**
- **Do not take TARGRETIN if you are pregnant or plan to become pregnant.**
- Your healthcare provider will do a pregnancy test, within one week before you start TARGRETIN, and each month during treatment with TARGRETIN to make sure that you are not pregnant.
- **You must use two effective forms of birth control together starting one month before you begin treatment with TARGRETIN, during treatment, and for one month after stopping TARGRETIN.** Birth control pills (oral contraceptives) and other hormonal forms of birth control may not be effective if used with TARGRETIN. At least one of the forms of birth control that you choose should not contain hormones. Talk to your healthcare provider about what forms of birth control may be right for you during treatment with TARGRETIN.
- **You should start taking TARGRETIN on the second or third day of a normal menstrual period.** Follow your healthcare provider's instructions about when to start TARGRETIN.
- Call your healthcare provider right away, if you become pregnant or think that you are pregnant during treatment with TARGRETIN, and for one month after you stop taking TARGRETIN.

For males:

- You must use a condom with female partners who are pregnant, might be pregnant, or who are able to become pregnant, during treatment with TARGRETIN and for at least one month after your last dose.

What is TARGRETIN?

TARGRETIN is a prescription medicine used to treat the skin problems that happen with a type of cancer called cutaneous T-cell lymphoma (CTCL) after treatment with at least one other type of medicine by mouth or injection, did not work or has stopped working.

It is not known if TARGRETIN is safe and effective in children.

Who should not take TARGRETIN?

Do not take TARGRETIN:

- if you are pregnant or plan to become pregnant. See **“What is the most important information I should know about TARGRETIN?”**
- if you are allergic to bexarotene or any of the ingredients in TARGRETIN. See the end of this leaflet for a complete list of ingredients in TARGRETIN.

Before taking TARGRETIN, tell your healthcare provider about all of your medical conditions, including if you:

- have or have had problems with your pancreas, including pancreatitis
- have or have had gallbladder problems
- have or have had liver problems
- have thyroid problems
- have diabetes
- have high levels of fats (lipids) called cholesterol or triglycerides in your blood
- have cataracts or a history of cataracts
- drink alcohol
- are pregnant, plan to become pregnant, or think you may be pregnant. See **“What is the most important information I should know about TARGRETIN?”**
- are breastfeeding or plan to breastfeed. It is not known if TARGRETIN passes into your breast milk. You should not breastfeed during treatment with TARGRETIN. Talk to your healthcare provider about the best way to feed your baby during treatment with TARGRETIN.

Tell your healthcare provider about all of the medicines you take, including prescription and over-the counter medicines, vitamins, and herbal supplements. Using TARGRETIN with certain other medicines can affect each other.

How should I take TARGRETIN?

- Take TARGRETIN exactly as your healthcare provider tells you.
- Your healthcare provider will tell you how many TARGRETIN capsules to take each day. Your healthcare provider may change your daily dose of TARGRETIN as needed to treat your CTCL or if you get certain side effects. You should not change your dose unless your healthcare provider tells you to.

Take your dose of TARGRETIN 1 time a day with a meal. Your healthcare provider will do blood tests before you start TARGRETIN and during treatment to check for side effects.

What should I avoid while taking TARGRETIN?

- Limit your exposure to sunlight and artificial types of sunlight. TARGRETIN can make your skin more sensitive to sunlight and you can get sunburn.
- Limit the amount of vitamin A that you take during treatment with TARGRETIN. Large doses of vitamin A may cause side effects that are similar to side effects that can happen in people who take TARGRETIN.

What are the possible side effects of TARGRETIN?

TARGRETIN can cause serious side effects, including:

- **See “What is the most important information I should know about TARGRETIN?”**
 - **Increased levels of fats (lipids) called cholesterol or triglycerides, in your blood are common with TARGRETIN, but can also be serious.** Your healthcare provider may prescribe you medicines to treat high cholesterol or triglycerides levels, reduce your dose, temporarily stop treatment or completely stop treatment with TARGRETIN if you have this problem.
 - **Inflammation of the pancreas (acute pancreatitis).** TARGRETIN can sometimes cause pancreatitis that comes on suddenly (acute), and that can lead to death. Your risk of developing acute pancreatitis may greater if you:
 - have had pancreatitis in the past
 - high levels of fats in your blood that are not controlled
 - drink large amounts of alcohol
 - have gallbladder problems
 - have diabetes that is not controlled
 - take certain medicines that can increase the amount of triglycerides in your blood
 - take medicines that can harm your pancreas
- Tell your healthcare provider right away** if you develop signs or symptoms of pancreatitis during treatment with TARGRETIN, including:
- nausea that will not go away
 - vomiting
 - stomach-area (abdominal) or back pain
- **Liver problems, including liver failure.** TARGRETIN can cause increased liver function blood test results, or liver problems that can lead to death.
 - **Thyroid problems (hypothyroidism) are common with TARGRETIN.** Your healthcare provider may prescribe thyroid hormone treatment for you if needed.
 - **Low white blood cell count is common with TARGRETIN, but may sometimes be severe.**
 - **New or worse cataracts.** Tell your healthcare provider about any changes in your vision during treatment with TARGRETIN. You may need to have any eye examination.
 - **Risk of low blood sugar in people who have diabetes.** TARGRETIN can interact with certain medicines used to treat diabetes, such as insulin, sulfonylurea medicines, and thiazolidinedione medicines. If you have diabetes, talk to your healthcare provider about your diabetes medicines and your risk for low blood sugar if you take TARGRETIN.

The most common side effects of TARGRETIN include:

- headache
- infection
- asthenia
- stomach-area (abdomen) pain
- rash
- swelling of your hands, arms, feet or legs
- nausea
- dry skin

These are not all the possible side effects of TARGRETIN. Call your doctor for medical advice about side effects. You may report side effects to FDA at 1-800-FDA-1088.

How should I store TARGRETIN?

- Store TARGRETIN between 36°F to 77°F (2°C to 25°C).
- Store the TARGRETIN bottle away from light, heat, and humidity.
- The capsules should not be taken after the expiration date printed on the bottle.

Keep TARGRETIN and all medicines out of the reach of children.

General information about the safe and effective use of TARGRETIN

Medicines are sometimes prescribed for purposes other than those listed in a Patient Information leaflet. Do not use TARGRETIN for a condition for which it was not prescribed. Do not give TARGRETIN to other people, even if they have the same symptoms that you have. It may harm them. You can ask your pharmacist or healthcare provider for information about TARGRETIN that is written for health professionals

What are the ingredients in TARGRETIN?

Active ingredient: bexarotene

Inactive ingredients: polyethylene glycol 400, polysorbate 20, povidone, and butylated hydroxyanisole. The capsule shell contains gelatin, sorbitol special-glycerin blend, and titanium dioxide.

Manufactured for: Valeant Pharmaceuticals North America LLC, Bridgewater, NJ 08807 USA

By: Catalent Pharma Solutions LLC, St. Petersburg, FL 33716

© 2015 Valeant Pharmaceuticals International, Inc. Targretin® (bexarotene) is a registered trademark of Valeant Pharmaceuticals International, Inc. All other trademarks or registered trademarks are the trademarks or registered trademarks of their respective owners.

For more information, call 1-800-321-4576

This Patient Information has been approved by the U. S. Food and Drug Administration.

Revised: 07/2015