

HIGHLIGHTS OF PRESCRIBING INFORMATION

These highlights do not include all the information needed to use DEMEROL™ INJECTION safely and effectively. See full prescribing information for DEMEROL INJECTION.

DEMEROL (meperidine hydrochloride injection), for subcutaneous, intramuscular, and intravenous use, CII

Initial U.S. Approval: 1942

WARNING: ADDICTION, ABUSE, AND MISUSE; LIFE-THREATENING RESPIRATORY DEPRESSION; NEONATAL OPIOID WITHDRAWAL SYNDROME; CYTOCHROME P450 3A4 INTERACTION; RISKS FROM CONCOMITANT USE WITH BENZODIAZEPINES OR OTHER CNS DEPRESSANTS; and MONOAMINE OXIDASE (MAO) INHIBITORS INTERACTIONS

See full prescribing information for complete boxed warning.

- DEMEROL Injection exposes users to risks of addiction, abuse, and misuse, which can also lead to overdose and death. Assess patient's risk before prescribing and monitor regularly for these behaviors and conditions. (5.1)
- Serious, life-threatening, or fatal respiratory depression may occur. Monitor closely, especially upon initiation or following a dose increase. (5.2)
- Prolonged use of DEMEROL Injection during pregnancy can result in neonatal opioid withdrawal syndrome, which may be life-threatening if not recognized and treated. If prolonged opioid use is required in a pregnant woman, advise the patient of the risk of neonatal opioid withdrawal syndrome and ensure that appropriate treatment will be available. (5.3)
- Concomitant use with CYP3A4 inhibitors (or discontinuation of CYP3A4 inducers) can result in fatal overdose of meperidine. (5.4, 7)
- Concomitant use of opioids with benzodiazepines or other central nervous system (CNS) depressants, including alcohol, may result in profound sedation, respiratory depression, coma, and death. Reserve concomitant prescribing for use in patients for whom alternative treatment options are inadequate; limit dosages and durations to the minimum required; and follow patients for signs and symptoms of respiratory depression and sedation. (5.5, 7).
- Concomitant use of DEMEROL Injection with Monoamine oxidase (MAO) inhibitors can result in coma, severe respiratory depression, cyanosis and hypotension. Use of DEMEROL Injection with MAO inhibitors is contraindicated. (4, 5.6, 7)

INDICATIONS AND USAGE

DEMEROL Injection is indicated for preoperative medication, support of anesthesia, for obstetrical analgesia, and for the management of pain severe enough to require an opioid analgesic and for which alternative treatments are inadequate.

Limitations of Use

Because of the risks of addiction, abuse, and misuse with opioids, even at recommended doses, reserve DEMEROL Injection for use in patients for whom alternative treatment options [e.g., non-opioid analgesics or opioid combination products]:

- Have not been tolerated, or are not expected to be tolerated,
- Have not provided adequate analgesia, or are not expected to provide adequate analgesia

DOSAGE AND ADMINISTRATION

- Use the lowest effective dosage for the shortest duration consistent with individual patient treatment goals. (2.1)
- Individualize dosing based on the severity of pain, patient response, prior analgesic experience, and risk factors for addiction, abuse, and misuse. (2.1)
- For Relief of Pain:
Adults: 50 mg to 150 mg intramuscularly or subcutaneously every 3 to 4 hours. (2.2)
Children: 0.5 mg/lb to 0.8 mg/lb intramuscularly or subcutaneously up to the adult dose every 3 to 4 hours. (2.2)

- Preoperative Medication:
Adults: 50 mg to 150 mg intramuscularly or subcutaneously, 30 to 90 minutes before beginning anesthesia. (2.3)
Children: 0.5 mg/lb to 1 mg/lb intramuscularly or subcutaneously up to the adult dose, 30 to 90 minutes before beginning anesthesia. (2.3)
- Obstetrical Analgesia:
50 mg to 100 mg intramuscularly or subcutaneously; may be repeated at 1 to 3 hour intervals. (2.4)
- Do not stop DEMEROL Injection abruptly in a physically dependent patient. (2.2)

DOSAGE FORMS AND STRENGTHS

- Injectable, Carpuject Single-Dose cartridge with Luer Lock for the Carpuject Syringe System: 25 mg/mL, 50 mg/mL, 75 mg/mL, and 100 mg/mL. (3)
- Injectable, Multiple-dose vials: 1,500 mg/30 mL (50 mg/mL). (3)
- Injectable, NexJect™ Single-dose Prefilled Syringe with Luer Lock: 25 mg/mL, 50 mg/mL, 75 mg/mL, and 100 mg/mL. (3)

CONTRAINDICATIONS

- Significant respiratory depression. (4)
- Acute or severe bronchial asthma in an unmonitored setting or in absence of resuscitative equipment. (4)
- Known or suspected gastrointestinal obstruction, including paralytic ileus. (4)
- Hypersensitivity to meperidine or to any other ingredients of the product. (4)

WARNINGS AND PRECAUTIONS

- Life-Threatening Respiratory Depression in Patients with Chronic Pulmonary Disease or in Elderly, Cachectic, or Debilitated Patients: Monitor closely, particularly during initiation and titration. (5.7)
- Serotonin Syndrome: Potentially life-threatening condition could result from concomitant serotonergic drug administration. Discontinue DEMEROL Injection if serotonin syndrome is suspected. (5.8)
- Adrenal Insufficiency: If diagnosed, treat with physiologic replacement of corticosteroids, and wean patient off of the opioid. (5.9)
- Severe Hypotension: Monitor during dosage initiation and titration. Avoid use of DEMEROL Injection in patients with circulatory shock. (5.10)
- Risks of Use in Patients with Increased Intracranial Pressure, Brain Tumors, Head Injury, or Impaired Consciousness: Monitor for sedation and respiratory depression. Avoid use of DEMEROL Injection in patients with impaired consciousness or coma. (5.11)

ADVERSE REACTIONS

Most common adverse reactions were lightheadedness, dizziness, sedation, nausea, vomiting and sweating. (6)

To report SUSPECTED ADVERSE REACTIONS, contact Hospira, Inc. at 1-800-441-4100, or FDA at 1-800-FDA-1088 or www.fda.gov/medwatch.

DRUG INTERACTIONS

- Mixed Agonist/Antagonist and Partial Agonist Opioid Analgesics: Avoid use with DEMEROL Injection because they may reduce analgesic effect of DEMEROL Injection or precipitate withdrawal symptoms. (7)

USE IN SPECIFIC POPULATIONS

- Pregnancy: May cause fetal harm. (8.1)

See 17 for PATIENT COUNSELING INFORMATION.

Revised: 10/2022

FULL PRESCRIBING INFORMATION: CONTENTS*

**WARNING: ADDICTION, ABUSE, AND MISUSE;
LIFE-THREATENING RESPIRATORY DEPRESSION; NEONATAL
OPIOID WITHDRAWAL SYNDROME; CYTOCHROME P450 3A4
INTERACTION; RISKS FROM CONCOMITANT USE WITH
BENZODIAZEPINES OR OTHER CNS DEPRESSANTS; and
MONOAMINE OXIDASE (MAO) INHIBITORS INTERACTION**

1 INDICATIONS AND USAGE

2 DOSAGE AND ADMINISTRATION

- 2.1 Important Dosage and Administration Instructions
- 2.2 For Management of Pain
- 2.3 For Preoperative Medication
- 2.4 For Support of Anesthesia
- 2.5 For Obstetrical Analgesia
- 2.6 Dosage Modifications with Concomitant Phenothiazines
- 2.7 Instructions for Use of the Syringe Systems

3 DOSAGE FORMS AND STRENGTHS

4 CONTRAINDICATIONS

5 WARNINGS AND PRECAUTIONS

- 5.1 Addiction, Abuse, and Misuse
- 5.2 Life-Threatening Respiratory Depression
- 5.3 Neonatal Opioid Withdrawal Syndrome
- 5.4 Risks of Concomitant Use or Discontinuation of Cytochrome P450 3A4 Inhibitors and Inducers
- 5.5 Risks from Concomitant Use with Benzodiazepines or Other CNS Depressants
- 5.6 Fatal Interaction with Monoamine Oxidase Inhibitors
- 5.7 Life-Threatening Respiratory Depression in Patients with Chronic Pulmonary Disease or in Elderly, Cachectic, or Debilitated Patients
- 5.8 Serotonin Syndrome with Concomitant Use of Serotonergic Drugs
- 5.9 Adrenal Insufficiency
- 5.10 Severe Hypotension
- 5.11 Risks of Use in Patients with Increased Intracranial Pressure, Brain Tumors, Head Injury, or Impaired Consciousness
- 5.12 Risks of Use in Patients with Gastrointestinal Conditions

- 5.13 Increased Risk of Seizures in Patients with Seizure Disorders
- 5.14 Withdrawal
- 5.15 Risks of Driving and Operating Machinery
- 5.16 Risks in Patients with Pheochromocytomas
- 5.17 Risk of Use in Patients with Atrial Flutter and Other Supraventricular Tachycardia
- 5.18 Intravenous Use

6 ADVERSE REACTIONS

7 DRUG INTERACTIONS

8 USE IN SPECIFIC POPULATIONS

- 8.1 Pregnancy
- 8.2 Lactation
- 8.3 Females and Males of Reproductive Potential
- 8.4 Pediatric Use
- 8.5 Geriatric Use

9 DRUG ABUSE AND DEPENDENCE

- 9.1 Controlled Substance
- 9.2 Abuse
- 9.3 Dependence

10 OVERDOSAGE

11 DESCRIPTION

12 CLINICAL PHARMACOLOGY

- 12.1 Mechanism of Action
- 12.2 Pharmacodynamics
- 12.3 Pharmacokinetics

13 NONCLINICAL TOXICOLOGY

- 13.1 Carcinogenesis, Mutagenesis, Impairment of Fertility

16 HOW SUPPLIED/STORAGE AND HANDLING

17 PATIENT COUNSELING INFORMATION

* Sections or subsections omitted from the full prescribing information are not listed.

FULL PRESCRIBING INFORMATION

WARNING: ADDICTION, ABUSE, AND MISUSE; LIFE-THREATENING RESPIRATORY DEPRESSION; NEONATAL OPIOID WITHDRAWAL SYNDROME; CYTOCHROME P450 3A4 INTERACTION; RISKS FROM CONCOMITANT USE WITH BENZODIAZEPINES OR OTHER CNS DEPRESSANTS; and MONOAMINE OXIDASE (MOA) INHIBITORS INTERACTIONS

Addiction, Abuse, and Misuse

DEMEROL Injection exposes patients and other users to the risks of opioid addiction, abuse, and misuse, which can lead to overdose and death. Assess each patient's risk prior to prescribing DEMEROL Injection, and monitor all patients regularly for the development of these behaviors and conditions [see *Warnings and Precautions (5.1)*].

Life-Threatening Respiratory Depression

Serious, life-threatening, or fatal respiratory depression may occur with use of DEMEROL Injection. Monitor for respiratory depression, especially during initiation of DEMEROL Injection or following a dose increase [see *Warnings and Precautions (5.2)*].

Neonatal Opioid Withdrawal Syndrome

Prolonged use of DEMEROL Injection during pregnancy can result in neonatal opioid withdrawal syndrome, which may be life-threatening if not recognized and treated, and requires management according to protocols developed by neonatology experts. If opioid use is required for a prolonged period in a pregnant woman, advise the patient of the risk of neonatal opioid withdrawal syndrome and ensure that appropriate treatment will be available [see *Warnings and Precautions (5.3)*].

Cytochrome P450 3A4 Interaction

The concomitant use of DEMEROL Injection with all cytochrome P450 3A4 inhibitors may result in an increase in meperidine plasma concentrations, which could increase or prolong adverse reactions and may cause potentially fatal respiratory depression. In addition, discontinuation of a concomitantly used cytochrome P450 3A4 inducer may result in an increase in meperidine plasma concentration. Monitor patients receiving DEMEROL Injection and any CYP3A4 inhibitor or inducer [see *Warnings and Precautions (5.4), Drug Interactions (7)*].

Risks From Concomitant Use with Benzodiazepines Or Other CNS Depressants

Concomitant use of opioids with benzodiazepines or other central nervous system (CNS) depressants, including alcohol, may result in profound sedation, respiratory depression, coma, and death [see *Warnings and Precautions (5.5), Drug Interactions (7)*].

- Reserve concomitant prescribing of DEMEROL Injection and benzodiazepines or other CNS depressants for use in patients for whom alternative treatment options are inadequate.
- Limit dosage and duration to the minimum required.
- Follow patients for signs and symptoms of respiratory depression and sedation.

Concomitant Use of DEMEROL Injection with Monoamine Oxidase (MAO) Inhibitors

Concomitant use of DEMEROL Injection with monoamine oxidase (MAO) inhibitors can result in coma, severe respiratory depression, cyanosis, and hypotension. Use of DEMEROL Injection with MAO inhibitors within last 14 days is contraindicated [see *Contraindications (4), Warnings and Precautions (5.6), Drug Interactions (7)*].

1 INDICATIONS AND USAGE

DEMEROL Injection is indicated for preoperative medication, support of anesthesia, and obstetrical analgesia.

DEMEROL Injection is indicated for the management of pain severe enough to require an opioid analgesic and for which alternative treatments are inadequate.

Limitations of Use

Because of the risks of addiction, abuse, and misuse with opioids, even at recommended doses [*see Warnings and Precautions (5.1)*], reserve DEMEROL Injection for use in patients for whom alternative treatment options [e.g., non-opioid analgesics or opioid combination products]:

- Have not been tolerated, or are not expected to be tolerated
- Have not provided adequate analgesia, or are not expected to provide adequate analgesia

DEMEROL Injection should not be used for treatment of chronic pain. Prolonged DEMEROL Injection use may increase the risk of toxicity (e.g. seizures) from the accumulation of the meperidine metabolite, normeperidine.

2 DOSAGE AND ADMINISTRATION

2.1 Important Dosage and Administration Instructions

Use the lowest effective dosage for the shortest duration consistent with individual patient treatment goals [*see Warnings and Precautions (5)*].

Initiate the dosing regimen for each patient individually, taking into account the patient's severity of pain, patient response, prior analgesic treatment experience, and risk factors for addiction, abuse, and misuse [*see Warnings and Precautions (5.1)*].

Monitor patients closely for respiratory depression, especially within the first 24-72 hours of initiating therapy and following dosage increases with DEMEROL Injection and adjust the dosage accordingly [*see Warnings and Precautions (5.2)*].

Parenteral drug products should be inspected visually for particulate and discoloration prior to administration whenever solution and container permit.

2.2 For Management of Pain

Initial Dosage

Dosage should be adjusted according to the severity of the pain and the response of the patient. While subcutaneous administration is suitable for occasional use, intramuscular administration is preferred when repeated doses are required. If intravenous administration is required, dosage should be decreased and the injection made very slowly, preferably utilizing a diluted solution.

Adults: The usual dosage is 50 mg to 150 mg intramuscularly or subcutaneously every 3 or 4 hours as needed for pain. Elderly patients should usually be given meperidine at the lower end of the dose range and observed closely.

Children: The usual dosage is 0.5 mg/lb to 0.8 mg/lb intramuscularly or subcutaneously up to the adult dose, every 3 or 4 hours as necessary.

Titration and Maintenance of Therapy

Individually titrate DEMEROL Injection to a dose that provides adequate analgesia and minimizes

adverse reactions. Continually reevaluate patients receiving DEMEROL Injection to assess the maintenance of pain control and the relative incidence of adverse reactions, as well as monitoring for the development of addiction, abuse, or misuse [see *Warnings and Precautions (5.1)*]. Frequent communication is important among the prescriber, other members of the health and care team, the patient, and the caregiver/family during periods of changing analgesic requirements, including initial titration.

If the level of pain increases after dosage stabilization, attempt to identify the source of increased pain before increasing the DEMEROL Injection dosage. If unacceptable opioid-related adverse reactions are observed, consider reducing the dosage. Adjust the dosage to obtain an appropriate balance between management of pain and opioid-related adverse reactions.

Discontinuation of DEMEROL Injection

When a patient who has been taking DEMEROL Injection regularly and may be physically dependent no longer requires therapy with DEMEROL Injection, taper the dose gradually, by 25% to 50% every 2 to 4 days, while monitoring carefully for signs and symptoms of withdrawal. If the patient develops these signs or symptoms, raise the dose to the previous level and taper more slowly, either by increasing the interval between decreases, decreasing the amount of change in dose, or both. Do not abruptly discontinue DEMEROL Injection in a physically-dependent patient [see *Warnings and Precautions (5.13), Drug Abuse and Dependence (9.3)*].

2.3 For Preoperative Medication

Adults: The usual dosage is 50 mg to 100 mg intramuscularly or subcutaneously, 30 to 90 minutes before the beginning of anesthesia. Elderly patients should usually be given meperidine at the lower end of the dose range and observed closely.

Children: The usual dosage is 0.5 mg/lb to 1 mg/lb intramuscularly or subcutaneously up to the adult dose, 30 to 90 minutes before the beginning of anesthesia.

2.4 For Support of Anesthesia

Repeated slow intravenous Injections of fractional doses (e.g., 10 mg/mL) or continuous intravenous infusion of a more dilute solution (e.g., 1 mg/mL) should be used. The dose should be titrated to the needs of the patient and will depend on the premedication and type of anesthesia being employed, the characteristics of the particular patient, and the nature and duration of the operative procedure. Elderly patients should usually be given meperidine at the lower end of the dose range and observed closely.

2.5 For Obstetrical Analgesia

The usual dosage is 50 mg to 100 mg intramuscularly or subcutaneously when pain becomes regular, and may be repeated at 1- to 3-hour intervals.

2.6 Dosage Modifications with Concomitant Phenothiazines

The dose of DEMEROL Injection should be proportionately reduced (usually by 25 to 50 percent) when administered concomitantly with phenothiazines and many other tranquilizers since they potentiate the action of DEMEROL Injection.

2.7 Instructions for Use of the Syringe Systems

Instructions for using the Carpject Syringe are available with the reusable Carpject Holder. Carpject Single-dose cartridges are to be used ONLY with Carpject Holders.

To prevent needlestick injuries, needles should not be recapped, purposely bent, or broken by hand.

Blunt cannulas should not be recapped, purposely bent or broken by hand.

3 DOSAGE FORMS AND STRENGTHS

DEMEROL Injection is a clear, colorless, sterile aqueous solution, available in the following dosage forms and strengths:

- Single-dose Carpuject cartridge with Luer Lock for the Carpuject Syringe System, available in the following strengths: 25 mg/mL, 50 mg/mL, 75 mg/mL, and 100 mg/mL.
- Multiple-dose vials containing 0.1% metacresol as a preservative, available in the following strength: 1,500 mg/30 mL (50 mg/mL).
- Single-dose NexJect™ Prefilled Syringe with Luer Lock, available in the following strengths: 25 mg/mL, 50 mg/mL, 75 mg/mL, and 100 mg/mL.

4 CONTRAINDICATIONS

DEMEROL Injection is contraindicated in patients with:

- Significant respiratory depression [*see Warnings and Precautions (5.2)*]
- Acute or severe bronchial asthma in an unmonitored setting or in the absence of resuscitative equipment [*see Warnings and Precautions (5.2)*]
- Concomitant use of monoamine oxidase inhibitors (MAOIs) or within 14 days of having taken an MAOI [*see Warnings and Precautions (5.6), Drug Interactions (7)*]
- Known or suspected gastrointestinal obstruction, including paralytic ileus [*see Warnings and Precautions (5.12)*]
- Hypersensitivity to meperidine (e.g., anaphylaxis) [*see Adverse Reactions (6)*]

5 WARNINGS AND PRECAUTIONS

5.1 Addiction, Abuse, and Misuse

DEMEROL Injection contains meperidine, a Schedule II controlled substance. As an opioid, DEMEROL Injection exposes users to the risks of addiction, abuse, and misuse [*see Drug Abuse and Dependence (9)*].

Although the risk of addiction in any individual is unknown, it can occur in patients appropriately prescribed DEMEROL Injection. Addiction can occur at recommended dosages and if the drug is misused or abused.

Assess each patient's risk for opioid addiction, abuse, or misuse prior to prescribing DEMEROL Injection, and monitor all patients receiving DEMEROL Injection for the development of these behaviors and conditions. Risks are increased in patients with a personal or family history of substance abuse (including drug or alcohol abuse or addiction) or mental illness (e.g., major depression). The potential for these risks should not, however, prevent the proper management of pain in any given patient. Patients at increased risk may be prescribed opioids such as DEMEROL Injection, but use in such patients necessitates intensive counseling about the risks and proper use of DEMEROL Injection along with intensive monitoring for signs of addiction, abuse, and misuse.

Opioids are sought by drug abusers and people with addiction disorders and are subject to criminal diversion. Consider these risks when prescribing or dispensing DEMEROL Injection. Strategies to reduce these risks include prescribing the drug in the smallest appropriate quantity.

Contact local state professional licensing board or state controlled substances authority for information on how to prevent and detect abuse or diversion of this product.

5.2 Life-Threatening Respiratory Depression

Serious, life-threatening, or fatal respiratory depression has been reported with the use of opioids, even when used as recommended. Respiratory depression, if not immediately recognized and treated, may lead to respiratory arrest and death. Management of respiratory depression may include close observation, supportive measures, and use of opioid antagonists, depending on the patient's clinical status [*see Overdosage (10)*]. Carbon dioxide (CO₂) retention from opioid-induced respiratory depression can exacerbate the sedating effects of opioids.

While serious, life-threatening, or fatal respiratory depression can occur at any time during the use of DEMEROL Injection, the risk is greatest during the initiation of therapy or following a dosage increase. Monitor patients closely for respiratory depression, especially within the first 24 to 72 hours of initiating therapy with and following dosage increases of DEMEROL Injection.

To reduce the risk of respiratory depression, proper dosing and titration of DEMEROL Injection are essential [*see Dosage and Administration (2.3)*]. Overestimating the DEMEROL Injection dosage when converting patients from another opioid product can result in a fatal overdose with the first dose.

Opioids can cause sleep-related breathing disorders including central sleep apnea (CSA) and sleep-related hypoxemia. Opioid use increases the risk of CSA in a dose-dependent fashion. In patients who present with CSA, consider decreasing the opioid dosage using best practices for opioid taper [*see Dosage and Administration (2.1)*].

5.3 Neonatal Opioid Withdrawal Syndrome

Prolonged use of DEMEROL Injection during pregnancy can result in withdrawal in the neonate. Neonatal opioid withdrawal syndrome, unlike opioid withdrawal syndrome in adults, may be life-threatening if not recognized and treated, and requires management according to protocols developed by neonatology experts. Observe newborns for signs of neonatal opioid withdrawal syndrome and manage accordingly. Advise pregnant women using opioids of neonatal opioid withdrawal syndrome and ensure that appropriate treatment will be available [*see Use in Specific Populations (8.1)*, *Patient Counseling Information (17)*].

5.4 Risks of Concomitant Use or Discontinuation of Cytochrome P450 3A4 Inhibitors and Inducers

Concomitant use of DEMEROL Injection with a CYP3A4 inhibitor, such as macrolide antibiotics (e.g., erythromycin), azole-antifungal agents (e.g., ketoconazole), and protease inhibitors (e.g., ritonavir), may increase plasma concentrations of meperidine and prolong opioid adverse reactions, which may cause potentially fatal respiratory depression [*see Warnings and Precautions (5.4)*], particularly when an inhibitor is added after a stable dose of DEMEROL Injection is achieved. Similarly, discontinuation of a CYP3A4 inducer, such as rifampin, carbamazepine, and phenytoin, in DEMEROL-Injection treated patients may increase meperidine plasma concentrations and prolong opioid adverse reactions. When using DEMEROL Injection with CYP3A4 inhibitors or discontinuing CYP3A4 inducers in DEMEROL-Injection treated patients, monitor patients closely at frequent intervals and consider dosage reduction of DEMEROL Injection until stable drug effects are achieved [*Drug Interactions (7)*].

Concomitant use of DEMEROL Injection with CYP3A4 inducers or discontinuation of a CYP3A4 inhibitor could decrease meperidine plasma concentrations, decrease opioid efficacy or, possibly, lead to a withdrawal syndrome in a patient who had developed physical dependence to meperidine. When using DEMEROL Injection with CYP3A4 inducers or discontinuing CYP3A4 inhibitors, monitor patients

closely at frequent intervals and consider increasing the opioid dosage if needed to maintain adequate analgesia or if symptoms of opioid withdrawal occur [*see Drug Interactions (7)*].

5.5 Risks from Concomitant Use with Benzodiazepines or Other CNS Depressants

Profound sedation, respiratory depression, coma, and death may result from the concomitant use of DEMEROL Injection with benzodiazepines or other CNS depressants (e.g., non-benzodiazepine sedatives/hypnotics, anxiolytics, tranquilizers, muscle relaxants, general anesthetics, antipsychotics, other opioids, alcohol). Because of these risks, reserve concomitant prescribing of these drugs for use in patients for whom alternative treatment options are inadequate.

Observational studies have demonstrated that concomitant use of opioid analgesics and benzodiazepines increases the risk of drug-related mortality compared to use of opioid analgesics alone. Because of similar pharmacological properties, it is reasonable to expect similar risk with the concomitant use of other CNS depressant drugs with opioid analgesics [*see Drug Interactions (7)*].

If the decision is made to prescribe a benzodiazepine or other CNS depressant concomitantly with an opioid analgesic, prescribe the lowest effective dosages and minimum durations of concomitant use. In patients already receiving an opioid analgesic, prescribe a lower initial dose of the benzodiazepine or other CNS depressant than indicated in the absence of an opioid, and titrate based on clinical response. If an opioid analgesic is initiated in a patient already taking a benzodiazepine or other CNS depressant, prescribe a lower initial dose of the opioid analgesic, and titrate based on clinical response. Follow patients closely for signs and symptoms of respiratory depression and sedation.

Advise both patients and caregivers about the risks of respiratory depression and sedation when DEMEROL Injection is used with benzodiazepines or other CNS depressants (including alcohol and illicit drugs). Advise patients not to drive or operate heavy machinery until the effects of concomitant use of the benzodiazepine or other CNS depressant have been determined. Screen patients for risk of substance use disorders, including opioid abuse and misuse, and warn them of the risk for overdose and death associated with the use of additional CNS depressants including alcohol and illicit drugs [*see Drug Interactions (7)*, *Patient Counseling Information (17)*].

5.6 Fatal Interaction with Monoamine Oxidase Inhibitors

Meperidine is contraindicated in patients who are receiving monoamine oxidase (MAO) inhibitors or those who have recently received such agents. Therapeutic doses of meperidine have occasionally precipitated unpredictable, severe, and occasionally fatal reactions in patients who have received such agents within 14 days. The mechanism of these reactions is unclear, but may be related to a preexisting hyperphenylalaninemia. Some have been characterized by coma, severe respiratory depression, cyanosis, and hypotension, and have resembled the syndrome of acute narcotic overdose. Serotonin syndrome with agitation, hyperthermia, diarrhea, tachycardia, sweating, tremors and impaired consciousness may also occur. In other reactions the predominant manifestations have been hyperexcitability, convulsions, tachycardia, hyperpyrexia, and hypertension.

Do not use DEMEROL Injection in patients taking MAOIs or within 14 days of stopping such treatment. Intravenous hydrocortisone or prednisolone have been used to treat severe reactions, with the addition of intravenous chlorpromazine in those cases exhibiting hypertension and hyperpyrexia. The usefulness and safety of narcotic antagonists in the treatment of these reactions is unknown.

5.7 Life-Threatening Respiratory Depression in Patients with Chronic Pulmonary Disease or in Elderly, Cachectic, or Debilitated Patients

The use of DEMEROL Injection in patients with acute or severe bronchial asthma in an unmonitored setting or in the absence of resuscitative equipment is contraindicated.

Patients with Chronic Pulmonary Disease: DEMEROL-Injection treated patients with significant chronic obstructive pulmonary disease or cor pulmonale, and those with a substantially decreased respiratory reserve, hypoxia, hypercapnia, or pre-existing respiratory depression are at increased risk of decreased respiratory drive including apnea, even at recommended dosages of DEMEROL Injection [see *Warnings and Precautions (5.2)*].

Elderly, Cachectic, or Debilitated Patients: Life-threatening respiratory depression is more likely to occur in elderly, cachectic, or debilitated patients because they may have altered pharmacokinetics or altered clearance compared to younger, healthier patients [see *Warnings and Precautions (5.2)*].

Monitor such patients closely, particularly when initiating and titrating DEMEROL Injection and when DEMEROL Injection is given concomitantly with other drugs that depress respiration [see *Warnings and Precautions (5.2)*].

Alternatively, consider the use of non-opioid analgesics in these patients.

5.8 Serotonin Syndrome with Concomitant Use of Serotonergic Drugs

Cases of serotonin syndrome, a potentially life-threatening condition, have been reported during concomitant use of DEMEROL Injection with serotonergic drugs. Serotonergic drugs include selective serotonin reuptake inhibitors (SSRIs), serotonin and norepinephrine reuptake inhibitors (SNRIs), tricyclic antidepressants (TCAs), triptans, 5-HT₃ receptor antagonists, drugs that affect the serotonergic neurotransmitter system (e.g., mirtazapine, trazodone, tramadol), certain muscle relaxants (i.e., cyclobenzaprine, metaxalone), and drugs that impair metabolism of serotonin (including MAO inhibitors, both those intended to treat psychiatric disorders and also others, such as linezolid and intravenous methylene blue) [see *Drug Interactions (7)*]. This may occur within the recommended dosage range.

Serotonin syndrome symptoms may include mental status changes (e.g., agitation, hallucinations, coma), autonomic instability (e.g., tachycardia, labile blood pressure, hyperthermia), neuromuscular aberrations (e.g., hyperreflexia, incoordination, rigidity), and/or gastrointestinal symptoms (e.g., nausea, vomiting, diarrhea). The onset of symptoms generally occurs within several hours to a few days of concomitant use, but may occur later than that. Discontinue DEMEROL Injection if serotonin syndrome is suspected.

5.9 Adrenal Insufficiency

Cases of adrenal insufficiency have been reported with opioid use, more often following greater than one month of use. Presentation of adrenal insufficiency may include non-specific symptoms and signs including nausea, vomiting, anorexia, fatigue, weakness, dizziness, and low blood pressure. If adrenal insufficiency is suspected, confirm the diagnosis with diagnostic testing as soon as possible. If adrenal insufficiency is diagnosed, treat with physiologic replacement doses of corticosteroids. Wean the patient off of the opioid to allow adrenal function to recover and continue corticosteroid treatment until adrenal function recovers. Other opioids may be tried as some cases reported use of a different opioid without recurrence of adrenal insufficiency. The information available does not identify any particular opioids as being more likely to be associated with adrenal insufficiency.

5.10 Severe Hypotension

DEMEROL Injection may cause severe hypotension including orthostatic hypotension and syncope in ambulatory patients. There is increased risk in patients whose ability to maintain blood pressure has already been compromised by a reduced blood volume or concurrent administration of certain CNS depressant drugs (e.g., phenothiazines or general anesthetics) [see *Drug Interactions (7)*]. Monitor these patients for signs of hypotension after initiating or titrating the dosage of DEMEROL Injection. In patients with circulatory shock, DEMEROL Injection may cause vasodilation that can further reduce cardiac output and blood pressure. Avoid the use of DEMEROL Injection in patients with circulatory shock.

5.11 Risks of Use in Patients with Increased Intracranial Pressure, Brain Tumors, Head Injury, or Impaired Consciousness

In patients who may be susceptible to the intracranial effects of CO₂ retention (e.g., those with evidence of increased intracranial pressure or brain tumors), DEMEROL Injection may reduce respiratory drive, and the resultant CO₂ retention can further increase intracranial pressure. Monitor such patients for signs of sedation and respiratory depression, particularly when initiating therapy with DEMEROL Injection.

Opioids may also obscure the clinical course in a patient with a head injury. Avoid the use of DEMEROL Injection in patients with impaired consciousness or coma.

5.12 Risks of Use in Patients with Gastrointestinal Conditions

DEMEROL Injection is contraindicated in patients with known or suspected gastrointestinal obstruction, including paralytic ileus.

The meperidine in DEMEROL Injection may cause spasm of the sphincter of Oddi. Opioids may cause increases in serum amylase. Monitor patients with biliary tract disease, including acute pancreatitis, for worsening symptoms.

5.13 Increased Risk of Seizures in Patients with Seizure Disorders

The meperidine in DEMEROL Injection may increase the frequency of seizures in patients with seizure disorders, and may increase the risk of seizures occurring in other clinical settings associated with seizures. Monitor patients with a history of seizure disorders for worsened seizure control during DEMEROL Injection therapy. Prolonged meperidine use may increase the risk of toxicity (e.g., seizures) from the accumulation of the meperidine metabolite, normeperidine.

5.14 Withdrawal

Avoid the use of mixed agonist/antagonist (e.g., pentazocine, nalbuphine, and butorphanol) or partial agonist (e.g., buprenorphine) analgesics in patients who are receiving a full opioid agonist analgesic, including DEMEROL Injection. In these patients, mixed agonist/antagonist and partial agonist analgesics may reduce the analgesic effect and/or precipitate withdrawal symptoms.

When discontinuing DEMEROL Injection, gradually taper the dosage [see *Dosage and Administration (2.4)*]. Do not abruptly discontinue DEMEROL Injection [see *Drug Abuse and Dependence (9.3)*].

5.15 Risks of Driving and Operating Machinery

DEMEROL Injection may impair the mental or physical abilities needed to perform potentially hazardous activities such as driving a car or operating machinery. Warn patients not to drive or operate dangerous machinery unless they are tolerant to the effects of DEMEROL Injection and know how they will react to the medication.

5.16 Risks in Patients with Pheochromocytoma

In patients with pheochromocytoma, meperidine has been reported to provoke hypertension.

5.17 Risk of Use in Patients with Atrial Flutter and Other Supraventricular Tachycardias

DEMEROL Injection should be used with caution in patients with atrial flutter and other supraventricular tachycardias because of a possible vagolytic action which may produce a significant increase in the ventricular response rate.

5.18 Intravenous Use

If necessary, meperidine may be given intravenously, but the injection should be given very slowly, preferably in the form of a diluted solution. Rapid intravenous injection of narcotic analgesics, including meperidine, increases the incidence of adverse reactions; severe respiratory depression, apnea, hypotension, peripheral circulatory collapse, and cardiac arrest have occurred. Meperidine should not be administered intravenously unless a narcotic antagonist and the facilities for assisted or controlled respiration are immediately available. When meperidine is given parenterally, especially intravenously, the patient should be lying down.

6 ADVERSE REACTIONS

The following serious adverse reactions are described, or described in greater detail, in other sections:

- Addiction, Abuse, and Misuse [*see Warnings and Precautions (5.1)*]
- Life-Threatening Respiratory Depression [*see Warnings and Precautions (5.2)*]
- Neonatal Opioid Withdrawal Syndrome [*see Warnings and Precautions (5.3)*]
- Interactions with Benzodiazepines or Other CNS Depressants [*see Warnings and Precautions (5.5)*]
- Adrenal Insufficiency [*see Warnings and Precautions (5.9)*]
- Severe Hypotension [*see Warnings and Precautions (5.10)*]
- Gastrointestinal Adverse Reactions [*see Warnings and Precautions (5.12)*]
- Seizures [*see Warnings and Precautions (5.13)*]
- Withdrawal [*see Warnings and Precautions (5.14)*]

The following adverse reactions associated with the use of meperidine were identified in clinical studies or postmarketing reports. Because some of these reactions were reported voluntarily from a population of uncertain size, it is not always possible to reliably estimate their frequency or establish a causal relationship to drug exposure.

The major hazards of meperidine, as with other opioid analgesics, are respiratory depression and, to a lesser degree, circulatory depression; respiratory arrest, shock, and cardiac arrest have occurred.

The most frequently observed adverse reactions include lightheadedness, dizziness, sedation, nausea, vomiting, and sweating. These effects seem to be more prominent in ambulatory patients and in those who are not experiencing severe pain. In such individuals, lower doses are advisable. Some adverse reactions in ambulatory patients may be alleviated if the patient lies down.

Other adverse reactions include:

Nervous System. Mood changes (e.g. euphoria, dysphoria), weakness, headache, agitation, tremor, involuntary muscle movements (e.g. muscle twitches, myoclonus), severe convulsions, transient hallucinations and disorientation, confusion, delirium, visual disturbances.

Inadvertent injection about a nerve trunk may result in sensory-motor paralysis which is usually, though

not always, transitory.

Gastrointestinal. Dry mouth, constipation, biliary tract spasm.

Cardiovascular. Flushing of the face, tachycardia, bradycardia, palpitation, hypotension [see *Warnings and Precautions (5.17)*], syncope, phlebitis following intravenous injection.

Genitourinary. Urinary retention.

Allergic. Pruritus, urticaria, other skin rashes, wheal and flare over the vein with intravenous injection. Hypersensitivity reactions, anaphylaxis.

Histamine release leading to hypotension and/or tachycardia, flushing, sweating, and pruritus.

Other. Pain at injection site; local tissue irritation and induration following subcutaneous injection, particularly when repeated; antidiuretic effect.

Serotonin syndrome: Cases of serotonin syndrome, a potentially life-threatening condition, have been reported during concomitant use of opioids with serotonergic drugs.

Adrenal insufficiency: Cases of adrenal insufficiency have been reported with opioid use, more often following greater than one month of use.

Androgen deficiency: Cases of androgen deficiency have occurred with chronic use of opioids [see *Clinical Pharmacology (12.2)*].

7 DRUG INTERACTIONS

Table 1 includes clinically significant drug interactions with DEMEROL Injection.

Table 1: Clinically Significant Drug Interactions with DEMEROL Injection	
Monoamine Oxidase Inhibitors (MAOIs)	
<i>Clinical Impact:</i>	Meperidine is contraindicated in patients who are receiving monoamine oxidase (MAO) inhibitors or those who have recently received such agents. Therapeutic doses of meperidine have occasionally precipitated unpredictable, severe, and occasionally fatal reactions in patients who have received such agents within 14 days. The mechanism of these reactions is unclear, but may be related to a preexisting hyperphenylalaninemia. Some have been characterized by coma, severe respiratory depression, cyanosis, and hypotension, and have resembled the syndrome of acute narcotic overdose. Serotonin syndrome with agitation, hyperthermia, diarrhea, tachycardia, sweating, tremors and impaired consciousness may also occur. In other reactions the predominant manifestations have been hyperexcitability, convulsions, tachycardia, hyperpyrexia, and hypertension.
<i>Intervention:</i>	Do not use DEMEROL Injection in patients taking MAOIs or within 14 days of stopping such treatment. Intravenous hydrocortisone or prednisolone have been used to treat severe reactions, with the addition of intravenous chlorpromazine in those cases exhibiting hypertension and hyperpyrexia. The usefulness and safety of narcotic antagonists in the treatment of these reactions is unknown.
<i>Examples:</i>	Phenelzine, tranylcypromine, linezolid
Inhibitors of CYP3A4 and CYP2B6	
<i>Clinical Impact:</i>	The concomitant use of DEMEROL Injection and CYP3A4 or CYP2B6 inhibitors can increase the plasma concentration of meperidine, resulting in increased or prolonged opioid effects. These effects could be more pronounced with concomitant use of DEMEROL Injection and CYP2B6 and CYP3A4 inhibitors, particularly when an inhibitor is added after a stable dose of DEMEROL Injection is achieved [see <i>Warnings and Precautions (5.4)</i>]. After stopping a CYP3A4 inhibitor, as the effects of the inhibitor decline, the meperidine plasma concentration will decrease [see <i>Clinical Pharmacology (12.3)</i>], resulting in decreased opioid efficacy or a withdrawal syndrome in patients who had developed physical dependence to meperidine.
<i>Intervention:</i>	If concomitant use is necessary, consider dosage reduction of DEMEROL Injection until stable

Table 1: Clinically Significant Drug Interactions with DEMEROL Injection	
	<p>drug effects are achieved. Monitor patients for respiratory depression and sedation at frequent intervals.</p> <p>If a CYP3A4 or CYP2B6 inhibitor is discontinued, consider increasing the DEMEROL Injection dosage until stable drug effects are achieved.</p> <p>Monitor for signs of opioid withdrawal.</p>
<i>Examples:</i>	Macrolide antibiotics (e.g., erythromycin), azole-antifungal agents (e.g. ketoconazole), protease inhibitors (e.g., ritonavir)
CYP3A4 and CYP2B6 Inducers	
<i>Clinical Impact:</i>	<p>The concomitant use of DEMEROL Injection and CYP3A4 inducers, or CYP2B6 inducers can decrease the plasma concentration of meperidine [see <i>Clinical Pharmacology (12.3)</i>], resulting in decreased efficacy or onset of a withdrawal syndrome in patients who have developed physical dependence to meperidine [see <i>Warnings and Precautions (5.4)</i>].</p> <p>After stopping a CYP3A4 or CYP2B6 inducer, as the effects of the inducer decline, the meperidine plasma concentration will increase [see <i>Clinical Pharmacology (12.3)</i>], which could increase or prolong both the therapeutic effects and adverse reactions, and may cause serious respiratory depression.</p>
<i>Intervention:</i>	If concomitant use is necessary, consider increasing the DEMEROL Injection dosage until stable drug effects are achieved. Monitor for signs of opioid withdrawal. If a CYP3A4 or CYP2B6 inducer is discontinued, consider DEMEROL Injection dosage reduction and monitor for signs of respiratory depression.
<i>Examples:</i>	Rifampin, carbamazepine, phenytoin
Benzodiazepines and Other Central Nervous System (CNS) Depressants	
<i>Clinical Impact:</i>	Due to additive pharmacologic effect, the concomitant use of benzodiazepines or other CNS depressants, including alcohol, can increase the risk of hypotension respiratory depression, profound sedation, coma, and death.
<i>Intervention:</i>	Reserve concomitant prescribing of these drugs for use in patients for whom alternative treatment options are inadequate. Limit dosages and durations to the minimum required. Follow patients closely for signs of respiratory depression and sedation [see <i>Warnings and Precautions (5.5)</i>].
<i>Examples:</i>	Benzodiazepines and other sedatives/hypnotics, anxiolytics, tranquilizers, muscle relaxants, general anesthetics, antipsychotics, other opioids, alcohol.
Serotonergic Drugs	
<i>Clinical Impact:</i>	The concomitant use of opioids with other drugs that affect the serotonergic neurotransmitter system has resulted in serotonin syndrome [see <i>Warnings and Precautions (5.7)</i>].
<i>Intervention:</i>	If concomitant use is warranted, carefully observe the patient, particularly during treatment initiation and dose adjustment. Discontinue DEMEROL Injection if serotonin syndrome is suspected.
<i>Examples:</i>	Selective serotonin reuptake inhibitors (SSRIs), serotonin and norepinephrine reuptake inhibitors (SNRIs), tricyclic antidepressants (TCAs), triptans, 5-HT ₃ receptor antagonists, drugs that affect the serotonin neurotransmitter system (e.g., mirtazapine, trazodone, tramadol), certain muscle relaxants (i.e., cyclobenzaprine, metaxalone), monoamine oxidase (MAO) inhibitors (those intended to treat psychiatric disorders and also others, such as linezolid and intravenous methylene blue).
Mixed Agonist/Antagonist and Partial Agonist Opioid Analgesics	
<i>Clinical Impact:</i>	May reduce the analgesic effect of DEMEROL Injection and/or precipitate withdrawal symptoms.
<i>Intervention:</i>	Avoid concomitant use.
<i>Examples:</i>	Butorphanol, nalbuphine, pentazocine, buprenorphine.
Muscle Relaxants	
<i>Clinical Impact:</i>	Meperidine may enhance the neuromuscular blocking action of skeletal muscle relaxants and produce an increased degree of respiratory depression.
<i>Intervention:</i>	Monitor patients for signs of respiratory depression that may be greater than otherwise expected and decrease the dosage of DEMEROL Injection and/or the muscle relaxant as necessary.
Diuretics	

Table 1: Clinically Significant Drug Interactions with DEMEROL Injection	
<i>Clinical Impact:</i>	Opioids can reduce the efficacy of diuretics by inducing the release of antidiuretic hormone.
<i>Intervention:</i>	Monitor patients for signs of diminished diuresis and/or effects on blood pressure and increase the dosage of the diuretic as needed.
Anticholinergic Drugs	
<i>Clinical Impact:</i>	The concomitant use of anticholinergic drugs may increase risk of urinary retention and/or severe constipation, which may lead to paralytic ileus.
<i>Intervention:</i>	Monitor patients for signs of urinary retention or reduced gastric motility when DEMEROL Injection is used concomitantly with anticholinergic drugs.
Acyclovir	
<i>Clinical Impact:</i>	The concomitant use of acyclovir may increase the plasma concentrations of meperidine and its metabolite, normeperidine.
<i>Intervention:</i>	If concomitant use of acyclovir and DEMEROL Injection is necessary, monitor patients for respiratory depression and sedation at frequent intervals.
Cimetidine	
<i>Clinical Impact:</i>	The concomitant use of cimetidine may reduce the clearance and volume of distribution of meperidine also the formation of the metabolite, normeperidine, in healthy subjects
<i>Intervention:</i>	If concomitant use cimetidine and DEMEROL Injection is necessary, monitor patients for respiratory depression and sedation at frequent intervals.

8 USE IN SPECIFIC POPULATIONS

8.1 Pregnancy

Risk Summary

Prolonged use of opioid analgesics during pregnancy may cause neonatal opioid withdrawal syndrome. Available data with DEMEROL Injection are insufficient to inform a drug-associated risk for major birth defects and miscarriage. Formal animal reproduction studies have not been conducted with meperidine. Neural tube defects (exencephaly and cranioschisis) have been reported in hamsters administered a single bolus dose of meperidine during a critical period of organogenesis at 0.85 and 1.5 times the total human daily dose of 1200 mg. [see Data]

Adverse outcomes in pregnancy can occur regardless of the health of the mother or the use of medications. In the U.S. general population, the estimated background risk of major birth defects and miscarriage in clinically recognized pregnancies is 2-4% and 15-20%, respectively.

Clinical Considerations

Fetal/Neonatal Adverse Reactions

Prolonged use of opioid analgesics during pregnancy for medical or nonmedical purposes can result in physical dependence in the neonate and neonatal opioid withdrawal syndrome shortly after birth.

Neonatal opioid withdrawal syndrome presents as irritability, hyperactivity and abnormal sleep pattern, high pitched cry, tremor, vomiting, diarrhea, and failure to gain weight. The onset, duration, and severity of neonatal opioid withdrawal syndrome vary based on the specific opioid used, duration of use, timing and amount of last maternal use, and rate of elimination of the drug by the newborn. Observe newborns for symptoms of neonatal opioid withdrawal syndrome and manage accordingly [see Warnings and Precautions (5.3)].

Labor or Delivery

Opioids cross the placenta and may produce respiratory depression and psycho-physiologic effects in neonates. An opioid antagonist, such as naloxone, must be available for reversal of opioid-induced

respiratory depression in the neonate. DEMEROL Injection is not recommended for use in pregnant women during or immediately prior to labor, when other analgesic techniques are more appropriate. Opioid analgesics, including DEMEROL Injection, can prolong labor through actions which temporarily reduce the strength, duration, and frequency of uterine contractions. However, this effect is not consistent and may be offset by an increased rate of cervical dilation, which tends to shorten labor. Monitor neonates exposed to opioid analgesics during labor for signs of excess sedation and respiratory depression.

Data

Animal Data

Formal reproductive and developmental toxicology studies for meperidine have not been completed.

In a published study, neural tube defects (exencephaly and cranioschisis) were noted following subcutaneous administration of meperidine hydrochloride (127 and 218 mg/kg, respectively) on Gestation Day 8 to pregnant hamsters (0.85 and 1.5 times the total daily dose of 1200 mg/day based on body surface area). The findings cannot be clearly attributed to maternal toxicity.

8.2 Lactation

Risk Summary

Meperidine appears in the milk of nursing mothers receiving the drug. The developmental and health benefits of breastfeeding should be considered along with the mother's clinical need for DEMEROL Injection and any potential adverse effects on the breastfed infant from DEMEROL Injection or from the underlying maternal condition.

Clinical Considerations

Infants exposed to DEMEROL Injection through breast milk should be monitored for excess sedation and respiratory depression. Withdrawal symptoms can occur in breastfed infants when maternal administration of an opioid analgesic is stopped, or when breast-feeding is stopped.

8.3 Females and Males of Reproductive Potential

Infertility

Chronic use of opioids may cause reduced fertility in females and males of reproductive potential. It is not known whether these effects on fertility are reversible [*see Adverse Reactions (6), Clinical Pharmacology (12.2), Nonclinical Pharmacology (13.1)*].

8.4 Pediatric Use

The safety and efficacy of DEMEROL Injection in patients less than 18 years of age have not been established.

The safety and effectiveness of meperidine in pediatric patients has not been established. Literature reports indicate that meperidine has a slower elimination rate in neonates and young infants compared to older children and adults. Neonates and young infants may also be more susceptible to the effects, especially the respiratory depressant effects. If meperidine use is contemplated in neonates or young infants, any potential benefits of the drug need to be weighed against the relative risk of the patient.

8.5 Geriatric Use

Elderly patients (aged 65 years or older) may have increased sensitivity to meperidine. In general, use caution when selecting a dosage for an elderly patient, usually starting at the low end of the dosing range, reflecting the greater frequency of decreased hepatic, renal, or cardiac function and of concomitant disease or other drug therapy.

Respiratory depression is the chief risk for elderly patients treated with opioids, and has occurred after large initial doses were administered to patients who were not opioid-tolerant or when opioids were co-administered with other agents that depress respiration. Titrate the dosage of DEMEROL Injection slowly in geriatric patients and monitor closely for signs of central nervous system and respiratory depression [*see Warnings and Precautions (5.2)*].

Meperidine is known to be substantially excreted by the kidney, and the risk of adverse reactions to this drug may be greater in patients with impaired renal function. Because elderly patients are more likely to have decreased renal function, care should be taken in dose selection, and it may be useful to monitor renal function.

8.6 Hepatic Impairment

Accumulation of meperidine and/or its active metabolite, normeperidine, can also occur in patients with hepatic impairment. Elevated serum levels have been reported to cause central nervous system excitatory effects. Meperidine should therefore be used with caution in patients with hepatic impairment. Titrate the dosage of DEMEROL Injection slowly in patients with hepatic impairment and monitor closely for signs of central nervous system and respiratory depression.

8.7 Renal Impairment

Accumulation of meperidine and/or its active metabolite, normeperidine, can occur in patients with renal impairment. Meperidine should therefore be used with caution in patients with renal impairment. Titrate the dosage of DEMEROL Injection slowly in patients with renal impairment and monitor closely for signs of central nervous system and respiratory depression.

9 DRUG ABUSE AND DEPENDENCE

9.1 Controlled Substance

DEMEROL Injection contains meperidine, a Schedule II controlled substance.

9.2 Abuse

DEMEROL Injection contains meperidine, a substance with a high potential for abuse similar to other opioids including fentanyl, hydrocodone, hydromorphone, methadone, morphine, oxycodone, oxymorphone, and tapentadol. DEMEROL Injection can be abused and is subject to misuse, addiction, and criminal diversion [*see Warnings and Precautions (5.1)*].

All patients treated with opioids require careful monitoring for signs of abuse and addiction, since use of opioid analgesic products carries the risk of addiction even under appropriate medical use.

Prescription drug abuse is the intentional non-therapeutic use of a prescription drug, even once, for its rewarding psychological or physiological effects.

Drug addiction is a cluster of behavioral, cognitive, and physiological phenomena that develop after repeated substance use and includes a strong desire to take the drug, difficulties in controlling its use, persisting in its use despite harmful consequences, a higher priority given to drug use than to other activities and obligations, increased tolerance, and sometimes a physical withdrawal.

“Drug-seeking” behavior is very common in persons with substance use disorders. Drug-seeking tactics include emergency calls or visits near the end of office hours, refusal to undergo appropriate examination, testing, or referral, repeated “loss” of prescriptions, tampering with prescriptions, and reluctance to provide prior medical records or contact information for other treating health care provider(s). “Doctor shopping” (visiting multiple prescribers to obtain additional prescriptions) is common among drug

abusers and people suffering from untreated addiction. Preoccupation with achieving adequate pain relief can be appropriate behavior in a patient with poor pain control.

Abuse and addiction are separate and distinct from physical dependence and tolerance. Health care providers should be aware that addiction may not be accompanied by concurrent tolerance and symptoms of physical dependence in all addicts. In addition, abuse of opioids can occur in the absence of true addiction.

DEMEROL Injection, like other opioids, can be diverted for non-medical use into illicit channels of distribution. Careful record-keeping of prescribing information, including quantity, frequency, and renewal requests, as required by state and federal law, is strongly advised.

Proper assessment of the patient, proper prescribing practices, periodic re-evaluation of therapy, and proper dispensing and storage are appropriate measures that help to limit abuse of opioid drugs.

Risks Specific to Abuse of DEMEROL Injection

Abuse of DEMEROL Injection poses a risk of overdose and death. The risk is increased with concurrent abuse of DEMEROL Injection with alcohol and other central nervous system depressants.

Parenteral drug abuse is commonly associated with transmission of infectious diseases such as hepatitis and HIV.

9.3 Dependence

Both tolerance and physical dependence can develop during chronic opioid therapy. Tolerance is the need for increasing doses of opioids to maintain a defined effect such as analgesia (in the absence of disease progression or other external factors). Tolerance may occur to both the desired and undesired effects of drugs, and may develop at different rates for different effects.

Physical dependence results in withdrawal symptoms after abrupt discontinuation or a significant dosage reduction of a drug. Withdrawal also may be precipitated through the administration of drugs with opioid antagonist activity (e.g., naloxone, nalmefene), mixed agonist/antagonist analgesics (e.g., pentazocine, butorphanol, nalbuphine), or partial agonists (e.g., buprenorphine). Physical dependence may not occur to a clinically significant degree until after several days to weeks of continued opioid usage.

DEMEROL Injection should not be abruptly discontinued [*see Dosage and Administration (2.4)*]. If DEMEROL Injection is abruptly discontinued in a physically-dependent patient, a withdrawal syndrome may occur. Some or all of the following can characterize this syndrome: restlessness, lacrimation, rhinorrhea, yawning, perspiration, chills, myalgia, and mydriasis. Other signs and symptoms also may develop, including: irritability, anxiety, backache, joint pain, weakness, abdominal cramps, insomnia, nausea, anorexia, vomiting, diarrhea, or increased blood pressure, respiratory rate, or heart rate.

Infants born to mothers physically dependent on opioids will also be physically dependent and may exhibit respiratory difficulties and withdrawal signs [*see Use in Specific Populations (8.1)*].

10 OVERDOSAGE

Clinical Presentation

Acute overdose with DEMEROL Injection can be manifested by respiratory depression, somnolence progressing to stupor or coma, skeletal muscle flaccidity, cold and clammy skin, constricted pupils, and, in some cases, pulmonary edema, bradycardia, hypotension, partial or complete airway obstruction, atypical snoring, and death. Marked mydriasis rather than miosis may be seen with hypoxia in overdose situations [*see Clinical Pharmacology (12.2)*]. In severe overdose, particularly by the intravenous route, apnea, circulatory collapse, cardiac arrest, and death may occur.

Accumulation of normeperidine as in chronic use or possibly following introduction of a concomitant CYP3A4 inducer presents as excitatory syndrome including hallucinations, tremors, muscle twitches, dilated pupils, hyperactive reflexes, and convulsions.

Treatment of Overdose

In case of overdose, priorities are the reestablishment of a patent and protected airway and institution of assisted or controlled ventilation, if needed. Employ other supportive measures (including oxygen and vasopressors) in the management of circulatory shock and pulmonary edema as indicated. Cardiac arrest or arrhythmias will require advanced life-support techniques.

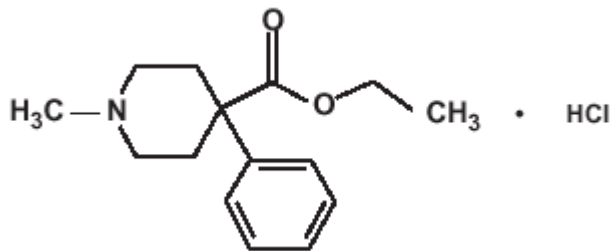
The opioid antagonists, naloxone or nalmefene, are specific antidotes to respiratory depression resulting from opioid overdose. For clinically significant respiratory or circulatory depression secondary to meperidine overdose, administer an opioid antagonist. Opioid antagonists should not be administered in the absence of clinically significant respiratory or circulatory depression secondary to meperidine overdose.

Because the duration of opioid reversal is expected to be less than the duration of action of meperidine in DEMEROL Injection, carefully monitor the patient until spontaneous respiration is reliably re-established. If the response to an opioid antagonist is suboptimal or only brief in nature, administer additional antagonist as directed by the product's prescribing information.

In an individual physically dependent on opioids, administration of the recommended usual dosage of the antagonist will precipitate an acute withdrawal syndrome. The severity of the withdrawal symptoms experienced will depend on the degree of physical dependence and the dose of the antagonist administered. If a decision is made to treat serious respiratory depression in the physically dependent patient, administration of the antagonist should be begun with care and by titration with smaller than usual doses of the antagonist.

11 DESCRIPTION

DEMEROL (meperidine hydrochloride injection) is an opioid agonist available as a sterile aqueous solution, for intramuscular, intravenous, or subcutaneous administration. It contains meperidine hydrochloride as the active pharmaceutical ingredient. Meperidine hydrochloride chemical name is 4-Piperidinecarboxylic acid, 1-methyl-4-phenyl-,ethyl ester, hydrochloride. The molecular weight is 283.79 g/mol. Its molecular formula is $C_{15}H_{21}NO_2 \cdot HCl$, and it has the following chemical structure.



Meperidine hydrochloride is a white crystalline substance with a melting point of 186° C to 189° C, and it is readily soluble in water.

DEMEROL (meperidine hydrochloride injection) is available as:

Single-dose Carpuject cartridge with Luer Lock for the Carpuject Syringe System: 25 mg/mL, 50 mg/mL, 75 mg/mL, and 100 mg/mL. Each mL of Single-dose cartridge contains 25 mg, 50 mg, 75 mg or 100 mg of meperidine hydrochloride USP (equivalent to 21.79 mg, 43.58 mg, 65.36 mg or 87.15 mg of

meperidine), respectively, and sodium hydroxide NF, and hydrochloric acid NF as pH adjusters, in water for injection. Only the 25 mg strength contains 3.8 mg of sodium chloride USP as isotonicity agent.

Multiple-dose vials: 1,500 mg/30 mL (50 mg/mL) strength. Each mL of vial contains 50 mg of meperidine hydrochloride USP (equivalent to 43.58 mg of meperidine), 1 mg of meta-cresol USP, as a preservative, and sodium hydroxide NF, and hydrochloric acid NF as pH adjusters, in water for injection.

Single-dose NexJect™ Prefilled Syringe with Luer Lock: 25 mg/mL, 50 mg/mL, 75 mg/mL, and 100 mg/mL strengths. Each mL contains 25 mg, 50 mg or 75 mg or 100 mg of meperidine hydrochloride USP (equivalent to 21.79 mg, 43.58 mg, 65.36 mg or 87.15 mg of meperidine), respectively, and sodium hydroxide NF, and hydrochloric acid NF as pH adjusters, in water for injection. Only the 25 mg strength contains 3.8 mg of sodium chloride USP as isotonicity agent.

The pH of DEMEROL (meperidine hydrochloride injection) solutions is between 3.5 and 6.0.

DEMEROL (meperidine hydrochloride injection) 5 percent solution has a specific gravity of 1.0086 at 20°C, and the 10 percent solution has a specific gravity of 1.0165 at 20°C.

12 CLINICAL PHARMACOLOGY

12.1 Mechanism of Action

Meperidine hydrochloride is an opioid agonist with multiple actions qualitatively similar to those of morphine; the most prominent of these involve the central nervous system and organs composed of smooth muscle. The principal actions of therapeutic value are analgesia and sedation.

12.2 Pharmacodynamics

Effects on the Central Nervous System

Meperidine produces respiratory depression by direct action on brain stem respiratory centers. The respiratory depression involves a reduction in the responsiveness of the brain stem respiratory centers to both increases in carbon dioxide tension and electrical stimulation.

Meperidine causes miosis, even in total darkness. Pinpoint pupils are a sign of opioid overdose but are not pathognomonic (e.g., pontine lesions of hemorrhagic or ischemic origins may produce similar findings). Marked mydriasis rather than miosis may be seen due to hypoxia in overdose situations.

Effects on the Gastrointestinal Tract and Other Smooth Muscle

Meperidine causes a reduction in motility associated with an increase in smooth muscle tone in the antrum of the stomach duodenum. Digestion of food in the small intestine is delayed and propulsive contractions are decreased. Propulsive peristaltic waves in the colon are decreased, while tone may be increased to the point of spasm, resulting in constipation. Other opioid-induced effects may include a reduction in biliary and pancreatic secretions, spasm of sphincter of Oddi, and transient elevations in serum amylase.

Effects of the Cardiovascular System

Meperidine produces peripheral vasodilation which may result in orthostatic hypotension or syncope. Manifestations of histamine release and/or peripheral vasodilation may include pruritus, flushing, red eyes, and sweating and/or orthostatic hypotension.

Effects on the Endocrine System

Opioids inhibit the secretion of adrenocorticotropic hormone (ACTH), cortisol, and luteinizing hormones (LH) in humans [see *Adverse Reactions (6)*]. They also stimulate prolactin, growth hormone (GH) secretion, and pancreatic secretion of insulin and glucagon.

Chronic use of opioids may influence the hypothalamic-pituitary-gonadal axis, leading to androgen deficiency that may manifest as low libido, impotence, erectile dysfunction, amenorrhea, or infertility. The causal role of opioids in the clinical syndrome of hypogonadism is unknown because the various medical, physical, lifestyle, and psychological stressors that may influence gonadal hormone levels have not been adequately controlled for in studies conducted to date [see *Adverse Reactions (6)*].

Effects on the Immune System

Opioids have been shown to have a variety of effects on components of the immune system in *in vitro* and animal models. The clinical significance of these findings is unknown. Overall, the effects of opioids appear to be modestly immunosuppressive.

Concentration–Efficacy Relationships

The minimum effective analgesic concentration will vary widely among patients, especially among patients who have been previously treated with potent agonist opioids. The minimum effective analgesic concentration of meperidine for any individual patient may increase over time due to an increase in pain, the development of a new pain syndrome and/or the development of analgesic tolerance [see *Dosage and Administration (2.1, 2.3)*].

Meperidine, in 60 mg to 80 mg parenteral doses, is approximately equivalent in analgesic effect to 10 mg of morphine. The onset of action is slightly more rapid than with morphine, and the duration of action is slightly shorter. Meperidine is significantly less effective by the oral than by the parenteral route, but the exact ratio of oral to parenteral effectiveness is unknown.

Concentration–Adverse Reaction Relationships

There is a relationship between increasing meperidine plasma concentration and increasing frequency of dose-related opioid adverse reactions such as nausea, vomiting, CNS effects, and respiratory depression. In opioid-tolerant patients, the situation may be altered by the development of tolerance to opioid-related adverse reactions [see *Dosage and Administration (2.1, 2.3)*].

12.3 Pharmacokinetics

Elimination

The half-life of meperidine is 2 to 5 hours, and the half-life of normeperidine is 15 to 30 hours.

Metabolism

Meperidine is metabolized through biotransformation. *In vitro* data show meperidine is metabolized to normeperidine in liver mainly by CYP3A4 and CYP2B6.

Hepatic Impairment

The elimination half-life is 3 to 8 hours in healthy volunteers and is 1.3 to 2 times greater in post-operative or cirrhotic patients.

Excretion

Meperidine and normeperidine are excreted by kidneys.

Age

In clinical studies reported in the literature, changes in several pharmacokinetic parameters with increasing age have been observed. The initial volume of distribution and steady-state volume of

distribution may be higher in elderly patients than in younger patients. The free fraction of meperidine in plasma may be higher in patients over 45 years of age than in younger patients.

Drug Interactions Studies

Phenytoin: The hepatic metabolism of meperidine may be enhanced by phenytoin. Concomitant administration resulted in reduced half-life and bioavailability with increased clearance of meperidine in healthy subjects; however, blood concentrations of normeperidine were increased [see *Drug Interactions (7)*].

Ritonavir: Plasma concentrations of the active metabolite normeperidine may be increased by ritonavir [see *Drug Interactions (7)*].

Acyclovir: Plasma concentrations of meperidine and its metabolite, normeperidine, may be increased by acyclovir [see *Drug Interactions (7)*].

Cimetidine: Cimetidine reduced the clearance and volume of distribution of meperidine and also the formation of the metabolite, normeperidine, in healthy subjects [see *Drug Interactions (7)*].

13 NONCLINICAL TOXICOLOGY

13.1 Carcinogenesis, Mutagenesis, Impairment of Fertility

Carcinogenesis

Long-term studies in animals to evaluate the carcinogenic potential of meperidine have not been conducted.

Mutagenesis

Studies in animals to evaluate the mutagenic potential of meperidine have not been conducted.

Impairment of Fertility

Studies to determine the effect of meperidine on fertility have not been conducted.

16 HOW SUPPLIED/STORAGE AND HANDLING

For Parenteral Use

DEMEROL (meperidine hydrochloride injection), for subcutaneous, intramuscular, and intravenous use, is clear and colorless, and available as follows:

Unit of Sale	Concentration (per total volume)
NDC 0409-1181-30 Carton of 1 30 mL fill in 30 mL Multiple-dose Vial	1,500 mg/30 mL (50 mg/mL)
NDC 0409-1176-30 Carton of 10 1 mL fill in 2.5 mL Carpuject Single-dose cartridge with Luer Lock	25 mg/mL
NDC 0409-1178-30 Carton of 10 1 mL fill in 2.5 mL Carpuject Single-dose cartridge with Luer Lock	50 mg/mL
NDC 0409-1179-30 Carton of 10 1 mL fill in 2.5 mL Carpuject Single-dose cartridge with Luer Lock	75 mg/mL

Unit of Sale	Concentration (per total volume)
NDC 0409-1180-69 Carton of 10 1 mL fill in 2.5 mL Carpuject Single-dose cartridge with Luer Lock	100 mg/mL
NDC 0409-1362-01 Clamshell of 10 1 mL fill in 1.5 mL NexJect™ Single-dose Prefilled Syringe with Luer Lock	25 mg/mL
NDC 0409-1418-01 Clamshell of 10 1 mL fill in 1.5 mL NexJect™ Single-dose Prefilled Syringe with Luer Lock	50 mg/mL
NDC 0409-2033-01 Clamshell of 10 1 mL fill in 1.5 mL NexJect™ Single-dose Prefilled Syringe with Luer Lock	75 mg/mL
NDC 0409-1377-01 Clamshell of 10 1 mL fill in 1.5 mL NexJect™ Single-dose Prefilled Syringe with Luer Lock	100 mg/mL

Carpupject Single-dose cartridge are packaged in a Slim-Pak tamper detection package. Note that a needle is not included.

Carpupject and NexJect™ Single-dose products: Discard unused portion.

Multiple-dose vials: Discard unused portion after 28 days.

Store at 20°C to 25°C (68°F to 77°F), excursions permitted between 15°C to 30°C (59°F to 86°F). [See USP Controlled Room Temperature.]

17 PATIENT COUNSELING INFORMATION

Serotonin Syndrome

Inform patients that opioids could cause a rare but potentially life-threatening condition resulting from concomitant administration of serotonergic drugs. Warn patients of the symptoms of serotonin syndrome and to seek medical attention right away if symptoms develop. Instruct patients to inform their health care provider if they are taking, or plan to take serotonergic medications [see *Warnings and Precautions (5.7)*, *Drug Interactions (7)*].

Constipation

Advise patients of the potential for severe constipation, including management instructions and when to seek medical attention [see *Adverse Reactions (6)*, *Clinical Pharmacology (12.1)*].

Distributed by Hospira, Inc., Lake Forest, IL 60045 USA



LAB-0846-7.0

INSTRUCTIONS FOR USE

To Use NexJect™ Syringe

Instructions for use - NexJect 1mL Prefilled Syringe

Prior to use,
visually inspect the product for:

- broken tamper evident seals
- cracked glass
- leaking drug
- an expired date
- particulate matter

If any of the above is present,
do not use the product
and obtain a new one.



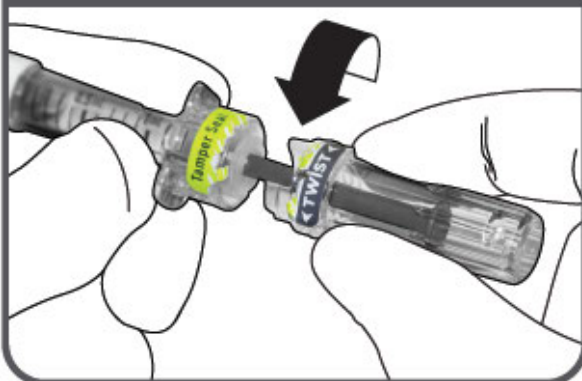
Confirm medication order matches the following:

- drug name
- drug strength
- dose
- route of administration

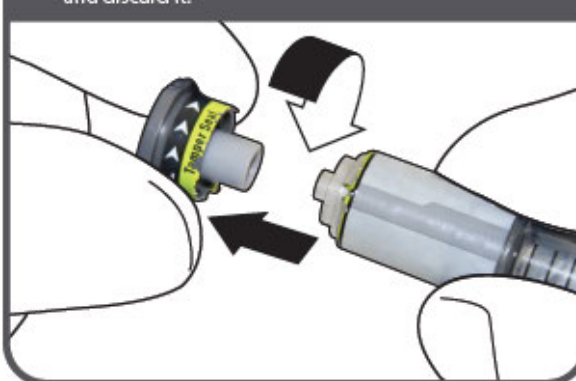
If any of the above does not match the order, obtain the appropriate medication.

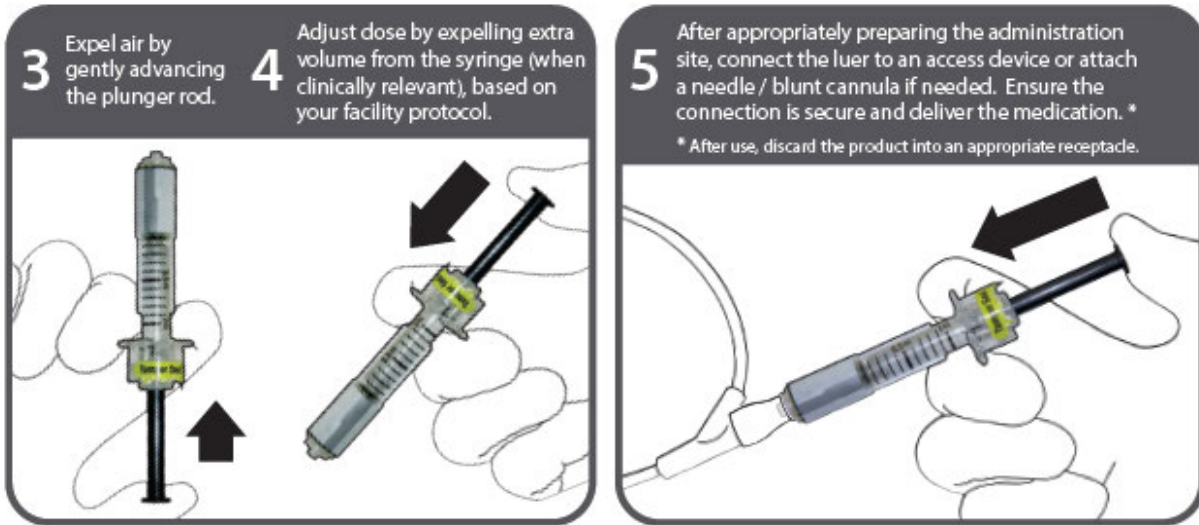
Notes: ■ Do not place the syringe in a sterile field. ■ If a needle is utilized, do not recap the needle.

- 1** Twist off the plunger rod cover to break the tamper evident seal and discard the cover.



- 2** Twist the luer tip cover to break the tamper evident seal. Pull the luer tip cover off the syringe and discard it.





NOTE: To prevent needlestick injuries, needles and blunt cannulas should not be recapped, purposely bent, or broken by hand.

Distributed by Hospira, Inc., Lake Forest, IL 60045 USA




LAB-1387-1.0

Revised: 9/2020

NDA 021171/S-051
Page 5

NDC 0409-1362-01



Demerol™ 
meperidine hydrochloride
injection, USP


25 mg / mL


For Intramuscular, Subcutaneous, or Intravenous Use
10 NexJect™ 1 mL Single-dose syringes with luer lock Rx only
Needle not included

Store at 20°C to 25°C (68°F to 77°F); excursions permitted between 15°C to 30°C (59°F to 86°F). [See USP Controlled Room Temperature.]
Sterile Aqueous Injection

Each mL contains 25 mg meperidine hydrochloride (equivalent to 21.79 mg meperidine), 3.8 mg sodium chloride for isotonicity, NaOH and HCl for pH adjustment, in water for injection.
For usual pediatric dosage and route of administration, see package insert.
Demerol™ is a registered trademark of Sanofi Pharmaceuticals, Inc.

FPO GSI DataBar Limited 10 Mill  (01)10304091362014 PAA189910 Distributed by Hospira, Inc. Lake Forest, IL 60045 USA 

 GTIN 10304091362014
SN *****
LOT *****
EXP DMMYYYY

Demerol™ 
meperidine hydrochloride injection, USP

25 mg / mL

NDC 0409-1362-01
10 NexJect™
1 mL Single-dose
syringes with luer lock

NDA 021171/S-051
Page 7

FPO GS1 DataBar Limited 10 Mill

NDC 0409-1418-01

Demerol™
meperidine hydrochloride
injection, USP



50 mg / mL

For Intramuscular, Subcutaneous, or Intravenous Use

10 NexJect™ 1 mL Single-dose syringes with luer lock Rx only
Needle not included

Store at 20°C to 25°C (68°F to 77°F); excursions permitted between 15°C to 30°C (59°F to 86°F). [See USP Controlled Room Temperature.]

Sterile Aqueous Injection

Each mL contains 50 mg meperidine hydrochloride (equivalent to 43.58 mg meperidine), NaOH and HCl for pH adjustment, in water for injection.

For usual dosage and route of administration, see package insert.

Demerol™ is a registered trademark of Sanofi Pharmaceuticals, Inc.



(01)00304091418011

PAA18996 1

Distributed by Hospira, Inc.
Lake Forest, IL 60045 USA



GS1 Data
Matrix

GTIN 00304091418011

SN *****

LOT *****A

EXP DMMYYYY



Demerol™
meperidine hydrochloride injection, USP



NDC 0409-1418-01

10 NexJect™
1 mL Single-dose
syringes with luer lock

50 mg / mL



NDA 021171/S-051
 Page 10





Gurpreet
Gill Sangha

Digitally signed by Gurpreet Gill Sangha
Date: 10/21/2022 05:51:49PM
GUID: 5135f2ad000117842392c50c36c7f28a