

## HIGHLIGHTS OF PRESCRIBING INFORMATION

These highlights do not include all the information needed to use ORFADIN safely and effectively. See full prescribing information for ORFADIN.

ORFADIN® (nitisinone) capsules, for oral use  
Initial U.S. Approval: 2002

### INDICATIONS AND USAGE

ORFADIN is a synthetic reversible inhibitor of 4-hydroxyphenylpyruvate dioxygenase indicated for use as an adjunct to dietary restriction of tyrosine and phenylalanine in the treatment of hereditary tyrosinemia type 1 (HT-1). (1)

### DOSAGE AND ADMINISTRATION

- The recommended initial dose is 1 mg/kg/day divided into two daily doses. (2)
- ORFADIN should be taken at least one hour before, or two hours after a meal. (2)
- For young children, capsules may be opened and the contents suspended in a small amount of water, formula or apple sauce immediately before use. (2)
- Maximum dose is 2 mg/kg/day. (2)
- Patients and their parents or caregivers should be advised of the need to maintain dietary restriction of tyrosine and phenylalanine when taking ORFADIN to treat hereditary tyrosinemia type 1. (2, 17)

### DOSAGE FORMS AND STRENGTHS

Capsules: 2 mg, 5 mg, 10 mg. (3)

### CONTRAINDICATIONS

- None (4)

### WARNINGS AND PRECAUTIONS

- Inadequate restriction of tyrosine and phenylalanine intake can lead to elevations in plasma tyrosine, which at levels above 500 µmol/L can result in ocular or other complications. (5.1)
- Do not adjust ORFADIN dosage in order to lower the plasma tyrosine concentration. (5.1)
- Leucopenia and thrombocytopenia have been observed with treatment with ORFADIN. Monitor platelet and white blood cell counts regularly during ORFADIN therapy. (5.2)

### ADVERSE REACTIONS

Most common adverse reactions (incidence >2%) are hepatic neoplasm, liver failure, thrombocytopenia, leucopenia, visual system complaints including conjunctivitis, corneal opacity, keratitis, and photophobia. (6.1)

To report SUSPECTED ADVERSE REACTIONS, contact Swedish Orphan Biovitrum at 1-866-773-5274 or FDA at 1-800-FDA-1088 or [www.fda.gov/medwatch](http://www.fda.gov/medwatch).

### DRUG INTERACTIONS

Use caution when administering ORFADIN with drugs that are metabolized by CYP2C9. (12.3)

### USE IN SPECIFIC POPULATIONS

- Pregnancy: Based on animal data, may cause fetal harm. (8.1)
- Nursing women: Discontinue drug or nursing, taking into consideration importance of drug to mother. (8.3)

See 17 for PATIENT COUNSELING INFORMATION.

Revised: May 2014

## FULL PRESCRIBING INFORMATION: CONTENTS\*

### 1 INDICATIONS AND USAGE

### 2 DOSAGE AND ADMINISTRATION

#### 2.1 Dosage

#### 2.2 Administration

### 3 DOSAGE FORMS AND STRENGTHS

### 4 CONTRAINDICATIONS

### 5 WARNINGS AND PRECAUTIONS

#### 5.1 High Plasma Tyrosine Levels

#### 5.2 Leucopenia and Severe Thrombocytopenia

### 6 ADVERSE REACTIONS

#### 6.1 Clinical Trials Experience

### 7 DRUG INTERACTIONS

### 8 USE IN SPECIFIC POPULATIONS

#### 8.1 Pregnancy

#### 8.3 Nursing Mothers

#### 8.4 Pediatric Use

#### 8.5 Geriatric Use

#### 8.6 Hepatic or Renal Impairment

#### 8.7 Gender Effect

#### 8.8 Race Effect

### 10 OVERDOSAGE

### 11 DESCRIPTION

### 12 CLINICAL PHARMACOLOGY

#### 12.1 Mechanism of Action

#### 12.3 Pharmacokinetics

### 13 NONCLINICAL TOXICOLOGY

#### 13.1 Carcinogenesis, Mutagenesis, Impairment of Fertility

### 14 CLINICAL STUDIES

#### 14.1 Clinical Studies in HT-1

### 16 HOW SUPPLIED/STORAGE AND HANDLING

### 17 PATIENT COUNSELING INFORMATION

\*Sections or subsections omitted from the full prescribing information are not listed.

## FULL PRESCRIBING INFORMATION

### 1 INDICATIONS AND USAGE

ORFADIN® capsules (nitisinone) are indicated as an adjunct to dietary restriction of tyrosine and phenylalanine in the treatment of patients with hereditary tyrosinemia type 1 (HT-1).

### 2 DOSAGE AND ADMINISTRATION

#### 2.1 Dosage

The recommended dose of ORFADIN is 1 to 2 mg/kg divided into two daily doses. The initial dose is 1 mg/kg/day divided for morning and evening administration.

Treatment with ORFADIN should be initiated by a physician experienced in the treatment of HT-1. The dose of ORFADIN may be adjusted in each patient. In patients whose erythrocyte PBG-synthase activity and urine 5-ALA and urine succinylacetone are not normalized within one month after the start of ORFADIN treatment, the ORFADIN dose may be increased to 1.5 mg/kg/day. In patients receiving 1.5 mg/kg/day, whose erythrocyte PBG-synthase activity and urine 5-ALA and urine succinylacetone remain elevated and whose plasma succinylacetone is not normalized after three months, the dose may be increased to up a maximum dose of 2 mg/kg/day.

If plasma nitisinone concentration, plasma succinylacetone, urine 5-ALA and erythrocyte PBG-synthase activity are not available, clinical laboratory assessments should include urine succinylacetone, liver function tests, alpha-fetoprotein, and serum tyrosine and phenylalanine level. During initiation of therapy and during acute exacerbations, it may be necessary to follow more closely all available biochemical parameters [see *Warnings and Precautions (5)*].

#### 2.2 Administration

ORFADIN should be taken at least one hour before or at least two hours after a meal, since food effect is unknown. For young children, ORFADIN capsules may be opened and the contents suspended in a small amount of water immediately before use.

Physicians should counsel patients and their parents or caregivers of the need to maintain dietary restriction of tyrosine and phenylalanine when taking ORFADIN to treat hereditary tyrosinemia type 1.

### 3 DOSAGE FORMS AND STRENGTHS

ORFADIN capsules (nitisinone) are available as white capsules imprinted with “NTBC” followed by “2 mg”, “5 mg”, or “10 mg”, indicating the actual amount of nitisinone in each capsule.

### 4 CONTRAINDICATIONS

None.

### 5 WARNINGS AND PRECAUTIONS

#### 5.1 High Plasma Tyrosine Levels

ORFADIN is an inhibitor of 4-hydroxyphenyl-pyruvate dioxygenase, an enzyme in the tyrosine metabolic pathway [see *Clinical Pharmacology (12)*]. Therefore, treatment with ORFADIN may cause an increase in blood tyrosine in patients with HT-1, and patients should maintain concomitant reduction in dietary tyrosine and phenylalanine while on ORFADIN treatment. Plasma tyrosine levels should be maintained below 500 µmol/L. Inadequate restriction of tyrosine and phenylalanine intake may increase blood tyrosine levels and may be associated with blood tyrosine levels greater than 500 µmol/L leading to the following:

- Ocular signs and symptoms including corneal ulcers, corneal opacities, keratitis, conjunctivitis, eye pain, and photophobia have been reported in patients treated with ORFADIN [see *Adverse Reactions (6)*]. Therefore, ophthalmologic examination including slit-lamp examination should be performed prior to initiating ORFADIN treatment. Patients who develop photophobia, eye pain, or signs of inflammation such as redness, swelling, or burning of the eyes during treatment with ORFADIN should undergo slit-lamp reexamination and immediate measurement of the plasma tyrosine concentration.
- Variable degrees of mental retardation and developmental delay. In patients treated with ORFADIN who exhibit an abrupt change in neurologic status, a clinical laboratory assessment including plasma tyrosine levels should be performed.
- Painful hyperkeratotic plaques on the soles and palms.

In patients with HT-1 treated with dietary restrictions and ORFADIN who develop elevated plasma tyrosine levels, an assessment of dietary tyrosine intake should be performed.

#### 5.2 Leucopenia and Severe Thrombocytopenia

In clinical trials, patients treated with ORFADIN and dietary restriction developed transient leucopenia (3%), thrombocytopenia (3%), or both (1.5%) [see *Adverse Reactions (6)*]. One patient who developed both leucopenia and thrombocytopenia improved after the dose of ORFADIN was decreased from 2 mg/kg to 1 mg/kg. No patients developed infections or bleeding as a result of the episodes of leucopenia and thrombocytopenia. Platelet and white blood cell counts should be monitored regularly during nitisinone therapy.

### 6 ADVERSE REACTIONS

The following serious adverse reactions are described below and elsewhere in the labeling:

- High Plasma Tyrosine Levels [see *Warnings and Precautions (5.1)*]

#### 6.1 Clinical Trials Experience

Because clinical trials are conducted under widely varying conditions, adverse reaction rates observed in the clinical trials of a drug cannot be directly compared to rates in the clinical trials of another drug and may not reflect the rates observed in clinical practice.

ORFADIN was studied in one open-label, uncontrolled study of 207 patients with HT-1, ages 0 to 21.7 years at enrollment (median age 9 months), who were diagnosed with HT-1 by the presence of succinylacetone in the urine or plasma. The starting dose of ORFADIN was 0.6 to 1 mg/kg/day, and the dose was increased in some patients to 2 mg/kg/day based on weight, biochemical, and enzyme markers. Median duration of treatment was 22.2 months (range 0.1 to 80 months).

The most serious adverse reactions reported during ORFADIN treatment were thrombocytopenia, leucopenia, porphyria, and ocular/visual complaints associated with elevated tyrosine levels [see *Warnings and Precautions (5)*]. Most patients with ocular/visual events had transient symptoms lasting less than one week, while 6

patients had symptoms lasting 16 to 672 days. Six patients had thrombocytopenia, with platelet counts 30,000/uL or lower in 3 patients. In 4 patients with thrombocytopenia, platelet counts returned to normal without change in ORFADIN dose. In 2 patients platelet count returned to normal 2 weeks to 5 months after ORFADIN treatment was discontinued. No patients developed infections or bleeding as a result of the episodes of leucopenia and thrombocytopenia.

Other serious adverse events reported during ORFADIN treatment were hepatic neoplasm, liver failure, and porphyric crises. Patients with hereditary tyrosinemia type 1 are at increased risk of developing porphyric crises, hepatic neoplasms, and liver failure requiring liver transplantation. These complications of HT-1 were observed in patients treated with nitisinone for a median of 22 months during the clinical trial (liver transplantation 13%, liver failure 7%, malignant hepatic neoplasms 5%, benign hepatic neoplasms 3%, porphyria 0.5%). Regular monitoring for these complications by hepatic imaging (ultrasound, computerized tomography, magnetic resonance imaging) and laboratory tests, including serum alpha-fetoprotein concentration is recommended. Patients with increasing alpha-fetoprotein levels or development of liver nodules during treatment with nitisinone should be evaluated for hepatic malignancy.

The most common adverse reactions reported in the clinical trial are summarized in Table 1.

<b>TABLE 1 Adverse Reactions Reported in 207 Patients During an Open-Label, Uncontrolled Trial</b>	
<b>ADVERSE REACTION</b>	
<b>LIVER and BILIARY SYSTEM</b>	
Hepatic neoplasm	8%
Liver failure	7%
<b>VISUAL SYSTEM</b>	
Conjunctivitis	2%
Corneal opacity	2%
Keratitis	2%
Photophobia	2%
Blepharitis	1%
Eye pain	1%
Cataracts	1%
<b>HEMIC and LYMPHATIC SYSTEM</b>	
Thrombocytopenia	3%
Leucopenia	3%
Granulocytopenia	1%
Porphyria	1%
Epistaxis	1%
<b>SKIN and APPENDAGES</b>	
Pruritis	1%
Exfoliative dermatitis	1%
Dry skin	1%
Maculopapular rash	1%
Alopecia	1%

Adverse reactions reported in less than 1% of the patients, regardless of causality assessment, included death, seizure, brain tumor, encephalopathy, headache, hyperkinesia, cyanosis, abdominal pain, diarrhea, enanthema, gastritis, gastroenteritis, gastrointestinal hemorrhage, melena, tooth discoloration, hepatic function disorder, elevated hepatic enzymes, liver enlargement, dehydration, hypoglycemia, thirst, infection, septicemia, otitis, infection (not otherwise specified), bronchitis, respiratory insufficiency, pathologic fracture, amenorrhea, nervousness, and somnolence.

## **7 DRUG INTERACTIONS**

Use caution when administering ORFADIN with drugs that are metabolized by CYP2C9 because of a potential for increased systemic exposure of these drugs [*see Pharmacokinetic (12.3)*].

## **8 USE IN SPECIFIC POPULATIONS**

### **8.1 Pregnancy**

Category C.

#### *Risk Summary*

There are no adequate and well-controlled studies with ORFADIN in pregnant women. However, animal reproduction studies have been conducted for nitisinone. In these studies, nitisinone was administered to mice and rabbits during organogenesis with oral doses of nitisinone up to 20 and 8 times respectively, the recommended human dose. In mice, nitisinone caused incomplete skeletal ossification of fetal bones and decreased pup survival at doses 0.4 times the recommended human dose, and

increased gestational length at doses 4 times the recommended human dose. In rabbits, nitisinone caused maternal toxicity and incomplete skeletal ossification of fetal bones at doses 1.6 times the recommended human dose. ORFADIN should be used during pregnancy only if the potential benefit justifies the potential risk to the fetus.

Data

#### Animal Data

Reproduction studies have been performed in mice at oral doses of about 0.4, 4 and 20 times the recommended human dose (1 mg/kg/day) and in rabbits at oral doses of about 1.6, 4 and 8 times the recommended human dose based on the body surface area. In mice, nitisinone has been shown to cause incomplete skeletal ossification of fetal bones at 0.4, 4 and 20 times the recommended human dose, increased gestational length at 4 and 20 times the recommended human dose, and decreased pup survival at 0.4 times the recommended human dose based on the body surface area. In rabbits, nitisinone caused incomplete skeletal ossification of fetal bones at 1.6, 4 and 8 times the recommended human dose based on the body surface area. However, there are no adequate and well controlled studies in pregnant women. Nitisinone should be used during pregnancy only if the potential benefit justified the potential risk to the fetus.

#### 8.3 Nursing Mothers

It is not known whether ORFADIN is present in human milk. Data suggest that nitisinone is present in rat milk due to findings of ocular toxicity and lower body weight seen in drug naive nursing rat pups. Because of the potential for serious adverse reactions in nursing infants from ORFADIN, a decision should be made to discontinue nursing or to discontinue the drug taking into account the importance of the drug to the mother.

#### 8.4 Pediatric Use

Pediatric patients with HT-1, ages birth to 17 years have been treated with ORFADIN in one open-label, uncontrolled clinical study [see *Clinical Studies (14.1)*]. Monitoring of blood and urine succinylacetone levels are recommended in the children to ensure adequate control [see *Dosage and Administration (2)*]. A nutritionist skilled in managing children with inborn errors of metabolism should be employed to design a low-protein diet deficient in tyrosine and phenylalanine.

#### 8.5 Geriatric Use

Clinical studies of nitisinone did not include any subjects aged 65 and over to determine whether they respond differently from younger subjects. HT-1 is presently a disease of the pediatric population. No pharmacokinetic studies of nitisinone have been performed in geriatric patients. In general, dose selection for an elderly patient should be cautious, usually starting at the low end of the dosing range, reflecting the greater frequency of decreased hepatic, renal, or cardiac function, and concomitant disease or other drug therapy in this patient population.

#### 8.6 Hepatic or Renal Impairment

The effect of hepatic dysfunction on the pharmacokinetics of nitisinone has not been studied. The effect of renal insufficiency on the pharmacokinetics of ORFADIN has not been studied.

#### 8.7 Gender Effect

The effect of gender on the pharmacokinetics of ORFADIN has not been studied.

#### 8.8 Race Effect

The effect of race on the pharmacokinetics of ORFADIN has not been studied.

### 10 OVERDOSAGE

Accidental ingestion of ORFADIN by individuals eating normal diets not restricted in tyrosine and phenylalanine will result in elevated tyrosine levels. In healthy volunteers given a single 1 mg/kg dose of nitisinone, the plasma tyrosine level reached a maximum of 1200  $\mu\text{mol/L}$  from 48 to 120 hours after dosing. After a washout period of 14 days, the mean value of plasma tyrosine was still 808  $\mu\text{mol/L}$ . Fasted follow-up samples obtained from volunteers several weeks later showed tyrosine values back to normal. There were no reports of changes in vital signs or laboratory data of any clinical significance. One patient reported sensitivity to sunlight. Hyper-tyrosinemia has been reported with ORFADIN treatment [see *Warnings and Precautions (5)*].

### 11 DESCRIPTION

ORFADIN contains nitisinone, which is a hydroxyphenyl-pyruvate dioxygenase inhibitor indicated as an adjunct to dietary restriction of tyrosine and phenylalanine in the treatment of hereditary tyrosinemia type 1 (HT-1).

Nitisinone occurs as white to yellowish-white, crystalline powder. It is practically insoluble in water, soluble in 2M sodium hydroxide and in methanol, and sparingly soluble in alcohol.

Chemically, nitisinone is 2-(2-nitro-4-trifluoromethylbenzoyl) cyclohexane-1,3-dione, and the structural formula is:

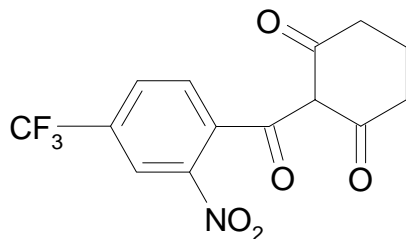


Figure 1. The molecular formula is  $\text{C}_{14}\text{H}_{10}\text{F}_3\text{NO}_5$  with a relative mass of 329.23

ORFADIN is a hard white-opaque capsule, marked as 2 mg, 5 mg or 10 mg strengths of nitisinone and is intended for oral administration. Each capsule contains 2 mg, 5 mg or 10 mg nitisinone, plus pre-gelatinized starch. The capsule shell is gelatin and titanium dioxide and the imprint is an iron oxide.

### 12 CLINICAL PHARMACOLOGY

#### 12.1 Mechanism of Action

Nitisinone is a competitive inhibitor of 4-hydroxyphenyl-pyruvate dioxygenase, an enzyme upstream of fumarylacetoacetate hydrolase (FAH) in the tyrosine catabolic pathway. By inhibiting the normal catabolism of tyrosine in patients with HT-1, nitisinone prevents the accumulation of the catabolic intermediates maleylacetoacetate and fumarylacetoacetate. In patients with HT-1, these catabolic intermediates are converted to the toxic metabolites succinylacetone and succinylacetoacetate, which are

responsible for the observed liver and kidney toxicity. Succinylacetone can also inhibit the porphyrin synthesis pathway leading to the accumulation of 5-aminolevulinate, a neurotoxin responsible for the porphyric crises characteristic of HT-1.

Nitisinone inhibits catabolism of the amino acid tyrosine and can result in elevated plasma levels of tyrosine. Therefore, treatment with nitisinone requires restriction of the dietary intake of tyrosine and phenylalanine to prevent the toxicity associated with elevated plasma levels of tyrosine [see *Warnings and Precautions* (5)].

### 12.3 Pharmacokinetics

No pharmacokinetic studies of nitisinone have been conducted in children or HT-1 patients.

The single-dose pharmacokinetics of nitisinone have been studied in ten healthy male volunteers aged 19-39 years (median 32 years). Nitisinone, 1 mg/kg body weight, was administered as a capsule and a liquid. The median time for maximum plasma concentration was 3 hours for the capsule and 15 minutes for the liquid. The capsule and liquid formulation were found to be bioequivalent based on an analysis of area under the plasma concentration-time curve and maximum plasma concentration ( $C_{max}$ ).

The mean terminal plasma half-life of nitisinone in healthy male volunteers was 54 hours.

In vitro binding of nitisinone to human plasma proteins is greater than 95% at 50  $\mu$ M concentration.

In vitro studies have shown that nitisinone is relatively stable in human liver microsomes with minor metabolism possibly mediated by CYP3A4 enzyme.

Based on in vitro studies, there is a potential for nitisinone to inhibit CYP2C9 at clinical dose [see *Drug Interaction* (7)]. Nitisinone is not expected to inhibit CYP 1A2, 2C19, or 3A4 based on in vitro studies. Nitisinone's potential to inhibit CYP2D6 and CYP2E1 at the clinical dose is unknown due to limited data.

The effect of food on the pharmacokinetics of nitisinone has not been studied.

## 13 NONCLINICAL TOXICOLOGY

### 13.1 Carcinogenesis, Mutagenesis, Impairment of Fertility

No long-term studies in animals have been performed to evaluate the carcinogenic potential of nitisinone. Nitisinone was not genotoxic in the Ames test and the *in vivo* mouse liver unscheduled DNA synthesis (UDS) test. Nitisinone was mutagenic in the mouse lymphoma cell (L5178Y/TK<sup>+</sup>) forward mutation test and in an *in vivo* mouse bone marrow micronucleus test.

In a single dose-group study in rats given 100 mg/kg (12 times the recommended clinical dose based on relative body surface area), reduced litter size, decreased pup weight at birth, and decreased survival of pups after birth was demonstrated.

## 14 CLINICAL STUDIES

### 14.1 Clinical Studies in HT-1

The efficacy and safety of ORFADIN in patients with HT-1 were evaluated in one open-label, uncontrolled study of 207 patients with HT-1, ages 0 to 21.7 years at enrollment (median age 9 months). Patients were diagnosed with HT-1 by the presence of succinylacetone in the urine or plasma. All patients were treated with ORFADIN at a starting dose of 0.6 to 1 mg/kg/day, and the dose was increased in some patients to 2 mg/kg/day based on weight, liver and kidney function tests, platelet count, serum amino acids, urinary phenolic acid, plasma and urine succinylacetone, erythrocyte PBG-synthase, and urine 5-ALA. The median duration of treatment was 22 months (range less than 1 month to 80 months). Efficacy was assessed by comparison of survival and incidence of liver transplant to historical controls.

In this clinical study, for patients presenting with HT-1 younger than 2 months of age who were treated with dietary restriction and nitisinone, 2- and 4-year survival probabilities were 88% and 88%, respectively. Data from historical controls showed that patients treated with dietary restriction alone had 2- and 4-year survival probabilities of 29% and 29%, respectively. For patients presenting between 2 and 6 months of age who were treated with dietary restrictions and nitisinone, 2- and 4-year survival probabilities were 94% and 94%, respectively. Data for historical controls showed that patients treated with dietary restriction alone had 2- and 4-year survival probabilities of 74% and 60%, respectively.

The effects on urine and plasma succinylacetone, porphyrin metabolism, and urinary alpha-1-microglobulin were also assessed in this clinical study.

Urine succinylacetone was measured in 186 patients. In all 186 patients, urinary succinylacetone level decreased to less than 1 mmol/mol creatinine. The median time to normalization was 0.3 months. The probability of recurrence of abnormal values of urine succinylacetone was 1% at a nitisinone concentration of 37  $\mu$ mol/L (95% confidence interval: 23-51  $\mu$ mol/L). Plasma succinylacetone was measured in 172 patients. In 150 patients (87%), plasma succinylacetone decreased to less than 0.1  $\mu$ mol/L. The median time to normalization was 3.9 months.

Porphyria-like crisis were reported in 3 patients (0.3% of cases per year) during the clinical study. This compares to an incidence of 5 to 20% of cases per year expected as part of the natural history of the disorder. An assessment of porphyria-like crises was performed because these events are commonly reported in patients with HT-1 who are not treated with nitisinone.

Urinary alpha-1-microglobulin, a proposed marker of proximal tubular dysfunction, was measured in 100 patients at baseline. The overall median pretreatment level was 4.3 g/mol creatinine. After one year of treatment in a subgroup of patients (N=100), overall median alpha-1-microglobulin decreased by 1.5 g/mol creatinine. In patients 24 months of age and younger in whom multiple values were available (N=65), median alpha-1-microglobulin levels decreased from 5.0 to 3.0 g/mol creatinine (reference value for age  $\leq$ 12 g/mol creatinine). In patients older than 24 months in whom multiple values were available (N=35), median alpha-1-microglobulin levels decreased from 2.8 to 2.0 g/mol creatinine (reference for age  $\leq$ 6 g/mol creatinine).

The long term effect of nitisinone with regard to hepatic function in patients was not assessed.

## 16 HOW SUPPLIED/STORAGE AND HANDLING

ORFADIN capsules are white and marked in black with "NTBC" and identified as 2 mg, 5 mg or 10 mg strengths of nitisinone. The capsules are packed in a high density (HD) polyethylene container with a tamper-resistant low density (LD) polyethylene snap-on cap. Each bottle contains 60 capsules.

2 mg white capsules imprinted "NTBC 2 mg" in black ink, NDC 66658-102-60

5 mg white capsules imprinted "NTBC 5 mg" in black ink, NDC 66658-105-60

10 mg white capsules imprinted "NTBC 10 mg" in black ink, NDC 66658-110-60

Store refrigerated, 2-8°C (36-46°F).

For Drug or Ordering information please call Dohmen Life Science Services at 1-877-473-3179.

**17 PATIENT COUNSELING INFORMATION**

- Advise patients and caregivers of the need to maintain dietary restriction of tyrosine and phenylalanine when taking ORFADIN to treat hereditary tyrosinemia type 1 [*see Warnings and Precautions (5)*].
- Advise patients and caregivers to report promptly unexplained eye symptoms, rash, jaundice, or excessive bleeding [*see Warnings and Precautions (5) and Adverse Reactions (6)*].

**Manufactured by:**

Apotek Produktion & Laboratorier AB, Sweden

**Marketed by:**

Sobi, Inc  
890 Winter Street  
Waltham, MA 02451

00064-02

2001014-07