

**HIGHLIGHTS OF PRESCRIBING INFORMATION**

These highlights do not include all the information needed to use ZYPREXA safely and effectively. See full prescribing information for ZYPREXA.

**ZYPREXA (olanzapine) Tablet for Oral use**  
**ZYPREXA ZYDIS (olanzapine) Tablet, Orally Disintegrating for Oral use**  
**ZYPREXA IntraMuscular (olanzapine) Injection, Powder, For Solution for Intramuscular use**

Initial U.S. Approval: 1996

**WARNING: INCREASED MORTALITY IN ELDERLY PATIENTS WITH DEMENTIA-RELATED PSYCHOSIS**

*See full prescribing information for complete boxed warning.*

- **Elderly patients with dementia-related psychosis treated with antipsychotic drugs are at an increased risk of death. ZYPREXA is not approved for the treatment of patients with dementia-related psychosis. (5.1, 5.14, 17.2)**  
**When using ZYPREXA and fluoxetine in combination, also refer to the Boxed Warning section of the package insert for Symbyax.**

----- **RECENT MAJOR CHANGES** -----

Indications and Usage:

Schizophrenia (1.1)	12/2009
Bipolar I Disorder (Manic or Mixed Episodes) (1.2)	12/2009
Special Considerations in Treating Pediatric Schizophrenia and Bipolar I Disorder (1.3)	12/2009
ZYPREXA IntraMuscular: Agitation Associated with Schizophrenia and Bipolar I Mania (1.4)	12/2009

Dosage and Administration:

Schizophrenia (2.1)	12/2009
Bipolar I Disorder (Manic or Mixed Episodes) (2.2)	12/2009

Warnings and Precautions:

Orthostatic Hypotension (5.8)	05/2010
Hyperprolactinemia (5.15)	01/2010

----- **INDICATIONS AND USAGE** -----

ZYPREXA® (olanzapine) is an atypical antipsychotic indicated:

As oral formulation for the:

- Treatment of schizophrenia. (1.1)
  - Adults: Efficacy was established in three clinical trials in patients with schizophrenia: two 6-week trials and one maintenance trial. (14.1)
  - Adolescents (ages 13-17): Efficacy was established in one 6-week trial in patients with schizophrenia (14.1). The increased potential (in adolescents compared with adults) for weight gain and hyperlipidemia may lead clinicians to consider prescribing other drugs first in adolescents. (1.1)
- Acute treatment of manic or mixed episodes associated with bipolar I disorder and maintenance treatment of bipolar I disorder. (1.2)
  - Adults: Efficacy was established in three clinical trials in patients with manic or mixed episodes of bipolar I disorder: two 3- to 4-week trials and one maintenance trial. (14.2)
  - Adolescents (ages 13-17): Efficacy was established in one 3-week trial in patients with manic or mixed episodes associated with bipolar I disorder (14.2). The increased potential (in adolescents compared with adults) for weight gain and hyperlipidemia may lead clinicians to consider prescribing other drugs first in adolescents. (1.2)
- Medication therapy for pediatric patients with schizophrenia or bipolar I disorder should be undertaken only after a thorough diagnostic evaluation and with careful consideration of the potential risks. (1.3)
- Adjunct to valproate or lithium in the treatment of manic or mixed episodes associated with bipolar I disorder. (1.2)
  - Efficacy was established in two 6-week clinical trials in adults (14.2). Maintenance efficacy has not been systematically evaluated.

As ZYPREXA IntraMuscular for the:

- Treatment of acute agitation associated with schizophrenia and bipolar I mania. (1.4)
- Efficacy was established in three 1-day trials in adults. (14.3)

As ZYPREXA and Fluoxetine in Combination for the:

- Treatment of depressive episodes associated with bipolar I disorder. (1.5)
  - Efficacy was established with Symbyax (olanzapine and fluoxetine in combination) in adults; refer to the product label for Symbyax.
- Treatment of treatment resistant depression (major depressive disorder in patients who do not respond to 2 separate trials of different antidepressants of adequate dose and duration in the current episode). (1.6)
  - Efficacy was established with Symbyax (olanzapine and fluoxetine in combination) in adults; refer to the product label for Symbyax.

----- **DOSAGE AND ADMINISTRATION** -----

Schizophrenia in adults (2.1)	Oral: Start at 5-10 mg once daily; Target: 10 mg/day within several days
Schizophrenia in adolescents (2.1)	Oral: Start at 2.5-5 mg once daily; Target: 10 mg/day
Bipolar I Disorder (manic or mixed episodes) in adults (2.2)	Oral: Start at 10 or 15 mg once daily
Bipolar I Disorder (manic or mixed episodes) in adolescents (2.2)	Oral: Start at 2.5-5 mg once daily; Target: 10 mg/day
Bipolar I Disorder (manic or mixed episodes) with lithium or valproate in adults (2.2)	Oral: Start at 10 mg once daily
Agitation associated with Schizophrenia and Bipolar I Mania in adults (2.4)	IM: 10 mg (5 mg or 7.5 mg when clinically warranted) Assess for orthostatic hypotension prior to subsequent dosing (max. 3 doses 2-4 hrs apart)
Depressive Episodes associated with Bipolar I Disorder in adults (2.5)	Oral in combination with fluoxetine: Start at 5 mg of oral olanzapine and 20 mg of fluoxetine once daily
Treatment Resistant Depression in adults (2.6)	Oral in combination with fluoxetine: Start at 5 mg of oral olanzapine and 20 mg of fluoxetine once daily

- Lower starting dose recommended in debilitated or pharmacodynamically sensitive patients or patients with predisposition to hypotensive reactions, or with potential for slowed metabolism. (2.1)
- Olanzapine may be given without regard to meals. (2.1)

ZYPREXA and Fluoxetine in Combination:

- Dosage adjustments, if indicated, should be made with the individual components according to efficacy and tolerability. (2.5, 2.6)
- Olanzapine monotherapy is not indicated for the treatment of depressive episodes associated with bipolar I disorder or treatment resistant depression. (2.5, 2.6)
- Safety of co-administration of doses above 18 mg olanzapine with 75 mg fluoxetine has not been evaluated. (2.5, 2.6)

----- **DOSAGE FORMS AND STRENGTHS** -----

- Tablets (not scored): 2.5, 5, 7.5, 10, 15, 20 mg (3)
- Orally Disintegrating Tablets (not scored): 5, 10, 15, 20 mg (3)
- Intramuscular Injection: 10 mg vial (3)

----- **CONTRAINDICATIONS** -----

- None with ZYPREXA monotherapy.
- When using ZYPREXA and fluoxetine in combination, also refer to the Contraindications section of the package insert for Symbyax®. (4)
- When using ZYPREXA in combination with lithium or valproate, refer to the Contraindications section of the package inserts for those products. (4)

----- **WARNINGS AND PRECAUTIONS** -----

- **Elderly Patients with Dementia-Related Psychosis:** Increased risk of death and increased incidence of cerebrovascular adverse events (e.g., stroke, transient ischemic attack). (5.1)
- **Suicide:** The possibility of a suicide attempt is inherent in schizophrenia and in bipolar I disorder, and close supervision of high-risk patients should accompany drug therapy; when using in combination with fluoxetine, also refer to the Boxed Warning and Warnings and Precautions sections of the package insert for Symbyax. (5.2)
- **Neuroleptic Malignant Syndrome:** Manage with immediate discontinuation and close monitoring. (5.3)

- **Hyperglycemia:** In some cases extreme and associated with ketoacidosis or hyperosmolar coma or death, has been reported in patients taking olanzapine. Patients taking olanzapine should be monitored for symptoms of hyperglycemia and undergo fasting blood glucose testing at the beginning of, and periodically during, treatment. (5.4)
- **Hyperlipidemia:** Undesirable alterations in lipids have been observed. Appropriate clinical monitoring is recommended, including fasting blood lipid testing at the beginning of, and periodically during, treatment. (5.5)
- **Weight Gain:** Potential consequences of weight gain should be considered. Patients should receive regular monitoring of weight. (5.6)
- **Tardive Dyskinesia:** Discontinue if clinically appropriate. (5.7)
- **Orthostatic Hypotension:** Orthostatic hypotension associated with dizziness, tachycardia, bradycardia and, in some patients, syncope, may occur especially during initial dose titration. Use caution in patients with cardiovascular disease, cerebrovascular disease, and those conditions that could affect hemodynamic responses. (5.8)
- **Leukopenia, Neutropenia, and Agranulocytosis:** Has been reported with antipsychotics, including ZYPREXA. Patients with a history of a clinically significant low white blood cell count (WBC) or drug induced leukopenia/neutropenia should have their complete blood count (CBC) monitored frequently during the first few months of therapy and discontinuation of ZYPREXA should be considered at the first sign of a clinically significant decline in WBC in the absence of other causative factors. (5.9)
- **Seizures:** Use cautiously in patients with a history of seizures or with conditions that potentially lower the seizure threshold. (5.11)
- **Potential for Cognitive and Motor Impairment:** Has potential to impair judgment, thinking, and motor skills. Use caution when operating machinery. (5.12)
- **Hyperprolactinemia:** May elevate prolactin levels. (5.15)
- **Use in Combination with Fluoxetine, Lithium or Valproate:** Also refer to the package inserts for Symbyax, lithium, or valproate. (5.16)
- **Laboratory Tests:** Monitor fasting blood glucose and lipid profiles at the beginning of, and periodically during, treatment. (5.17)

-----ADVERSE REACTIONS-----

Most common adverse reactions (≥5% and at least twice that for placebo) associated with:

**Oral Olanzapine Monotherapy:**

- **Schizophrenia (Adults)** – postural hypotension, constipation, weight gain, dizziness, personality disorder, akathisia (6.1)
- **Schizophrenia (Adolescents)** – sedation, weight increased, headache, increased appetite, dizziness, abdominal pain, pain in extremity, dry mouth (6.1)
- **Manic or Mixed Episodes, Bipolar I Disorder (Adults)** – asthenia, dry mouth, constipation, increased appetite, somnolence, dizziness, tremor (6.1)

- **Manic or Mixed Episodes, Bipolar I Disorder (Adolescents)** – sedation, weight increased, increased appetite, headache, fatigue, dizziness, dry mouth, abdominal pain, pain in extremity (6.1)

**Combination of ZYPREXA and Lithium or Valproate:**

- **Manic or Mixed Episodes, Bipolar I Disorder (Adults)** – dry mouth, weight gain, increased appetite, dizziness, back pain, constipation, speech disorder, increased salivation, amnesia, paresthesia (6.1)

**ZYPREXA and Fluoxetine in Combination:** Also refer to the Adverse Reactions section of the package insert for Symbyax. (6)

**ZYPREXA IntraMuscular for Injection:**

- **Agitation with Schizophrenia and Bipolar I Mania (Adults)** – somnolence (6.1)

**To report SUSPECTED ADVERSE REACTIONS, contact Eli Lilly and Company at 1-800-LillyRx (1-800-545-5979) or FDA at 1-800-FDA-1088 or [www.fda.gov/medwatch](http://www.fda.gov/medwatch)**

-----DRUG INTERACTIONS-----

- **Diazepam:** May potentiate orthostatic hypotension. (7.1, 7.2)
- **Alcohol:** May potentiate orthostatic hypotension. (7.1)
- **Carbamazepine:** Increased clearance of olanzapine. (7.1)
- **Fluvoxamine:** May increase olanzapine levels. (7.1)
- **ZYPREXA and Fluoxetine in Combination:** Also refer to the Drug Interactions section of the package insert for Symbyax. (7.1)
- **CNS Acting Drugs:** Caution should be used when taken in combination with other centrally acting drugs and alcohol. (7.2)
- **Antihypertensive Agents:** Enhanced antihypertensive effect. (7.2)
- **Levodopa and Dopamine Agonists:** May antagonize levodopa/dopamine agonists. (7.2)
- **Lorazepam (IM):** Increased somnolence with IM olanzapine. (7.2)
- **Other Concomitant Drug Therapy:** When using olanzapine in combination with lithium or valproate, refer to the Drug Interactions sections of the package insert for those products. (7.2)

-----USE IN SPECIFIC POPULATIONS-----

- **Pregnancy:** ZYPREXA should be used during pregnancy only if the potential benefit justifies the potential risk to the fetus. (8.1)
- **Nursing Mothers:** Breast-feeding is not recommended. (8.3)
- **Pediatric Use:** Safety and effectiveness of ZYPREXA in children <13 years of age have not been established. (8.4)

**See 17 for PATIENT COUNSELING INFORMATION and FDA-approved Medication Guide**

**Revised: MM/2010**

**FULL PRESCRIBING INFORMATION: CONTENTS\***

**WARNING: INCREASED MORTALITY IN ELDERLY PATIENTS WITH DEMENTIA-RELATED PSYCHOSIS**

**1 INDICATIONS AND USAGE**

- 1.1 Schizophrenia
- 1.2 Bipolar I Disorder (Manic or Mixed Episodes)
- 1.3 Special Considerations in Treating Pediatric Schizophrenia and Bipolar I Disorder
- 1.4 ZYPREXA IntraMuscular: Agitation Associated with Schizophrenia and Bipolar I Mania
- 1.5 ZYPREXA and Fluoxetine in Combination: Depressive Episodes Associated with Bipolar I Disorder
- 1.6 ZYPREXA and Fluoxetine in Combination: Treatment Resistant Depression

**2 DOSAGE AND ADMINISTRATION**

- 2.1 Schizophrenia
- 2.2 Bipolar I Disorder (Manic or Mixed Episodes)
- 2.3 Administration of ZYPREXA ZYDIS (olanzapine orally disintegrating tablets)
- 2.4 ZYPREXA IntraMuscular: Agitation Associated with Schizophrenia and Bipolar I Mania
- 2.5 ZYPREXA and Fluoxetine in Combination: Depressive Episodes Associated with Bipolar I Disorder
- 2.6 ZYPREXA and Fluoxetine in Combination: Treatment Resistant Depression

- 2.7 ZYPREXA and Fluoxetine in Combination: Dosing in Special Populations

**3 DOSAGE FORMS AND STRENGTHS**

**4 CONTRAINDICATIONS**

**5 WARNINGS AND PRECAUTIONS**

- 5.1 Elderly Patients with Dementia-Related Psychosis
- 5.2 Suicide
- 5.3 Neuroleptic Malignant Syndrome (NMS)
- 5.4 Hyperglycemia
- 5.5 Hyperlipidemia
- 5.6 Weight Gain
- 5.7 Tardive Dyskinesia
- 5.8 Orthostatic Hypotension
- 5.9 Leukopenia, Neutropenia, and Agranulocytosis
- 5.10 Dysphagia
- 5.11 Seizures
- 5.12 Potential for Cognitive and Motor Impairment
- 5.13 Body Temperature Regulation
- 5.14 Use in Patients with Concomitant Illness
- 5.15 Hyperprolactinemia
- 5.16 Use in Combination with Fluoxetine, Lithium, or Valproate
- 5.17 Laboratory Tests

**6 ADVERSE REACTIONS**

- 6.1 Clinical Trials Experience
- 6.2 Vital Signs and Laboratory Studies

- 6.3 Postmarketing Experience
- 7 **DRUG INTERACTIONS**
  - 7.1 Potential for Other Drugs to Affect Olanzapine
  - 7.2 Potential for Olanzapine to Affect Other Drugs
- 8 **USE IN SPECIFIC POPULATIONS**
  - 8.1 Pregnancy
  - 8.2 Labor and Delivery
  - 8.3 Nursing Mothers
  - 8.4 Pediatric Use
  - 8.5 Geriatric Use
- 9 **DRUG ABUSE AND DEPENDENCE**
  - 9.3 Dependence
- 10 **OVERDOSAGE**
  - 10.1 Human Experience
  - 10.2 Management of Overdose
- 11 **DESCRIPTION**
- 12 **CLINICAL PHARMACOLOGY**
  - 12.1 Mechanism of Action
  - 12.2 Pharmacodynamics
  - 12.3 Pharmacokinetics
- 13 **NONCLINICAL TOXICOLOGY**
  - 13.1 Carcinogenesis, Mutagenesis, Impairment of Fertility
  - 13.2 Animal Toxicology and/or Pharmacology
- 14 **CLINICAL STUDIES**
  - 14.1 Schizophrenia
  - 14.2 Bipolar I Disorder (Manic or Mixed Episodes)
- 14.3 Agitation Associated with Schizophrenia and Bipolar I Mania
- 16 **HOW SUPPLIED/STORAGE AND HANDLING**
  - 16.1 How Supplied
  - 16.2 Storage and Handling
- 17 **PATIENT COUNSELING INFORMATION**
  - 17.1 Information on Medication Guide
  - 17.2 Elderly Patients with Dementia-Related Psychosis: Increased Mortality and Cerebrovascular Adverse Events (CVAE), Including Stroke
  - 17.3 Neuroleptic Malignant Syndrome (NMS)
  - 17.4 Hyperglycemia
  - 17.5 Hyperlipidemia
  - 17.6 Weight Gain
  - 17.7 Orthostatic Hypotension
  - 17.8 Potential for Cognitive and Motor Impairment
  - 17.9 Body Temperature Regulation
  - 17.10 Concomitant Medication
  - 17.11 Alcohol
  - 17.12 Phenylketonurics
  - 17.13 Use in Specific Populations
  - 17.14 Need for Comprehensive Treatment Program in Pediatric Patients

\*Sections or subsections omitted from the full prescribing information are not listed

## FULL PRESCRIBING INFORMATION

### **WARNING: INCREASED MORTALITY IN ELDERLY PATIENTS WITH DEMENTIA-RELATED PSYCHOSIS**

Elderly patients with dementia-related psychosis treated with antipsychotic drugs are at an increased risk of death. Analyses of seventeen placebo-controlled trials (modal duration of 10 weeks), largely in patients taking atypical antipsychotic drugs, revealed a risk of death in drug-treated patients of between 1.6 to 1.7 times the risk of death in placebo-treated patients. Over the course of a typical 10-week controlled trial, the rate of death in drug-treated patients was about 4.5%, compared to a rate of about 2.6% in the placebo group. Although the causes of death were varied, most of the deaths appeared to be either cardiovascular (e.g., heart failure, sudden death) or infectious (e.g., pneumonia) in nature. Observational studies suggest that, similar to atypical antipsychotic drugs, treatment with conventional antipsychotic drugs may increase mortality. The extent to which the findings of increased mortality in observational studies may be attributed to the antipsychotic drug as opposed to some characteristic(s) of the patients is not clear. ZYPREXA (olanzapine) is not approved for the treatment of patients with dementia-related psychosis [see *Warnings and Precautions (5.1, 5.14) and Patient Counseling Information (17.2)*].

When using ZYPREXA and fluoxetine in combination, also refer to the Boxed Warning section of the package insert for Symbyax.

## 1 INDICATIONS AND USAGE

### 1.1 Schizophrenia

Oral ZYPREXA is indicated for the treatment of schizophrenia. Efficacy was established in three clinical trials in adult patients with schizophrenia: two 6-week trials and one maintenance trial. In adolescent patients with schizophrenia (ages 13-17), efficacy was established in one 6-week trial [see *Clinical Studies (14.1)*].

When deciding among the alternative treatments available for adolescents, clinicians should consider the increased potential (in adolescents as compared with adults) for weight gain and hyperlipidemia. Clinicians should consider the potential long-term risks when prescribing to adolescents, and in many cases this may lead them to consider prescribing other drugs first in adolescents [see *Warnings and Precautions (5.5, 5.6)*].

### 1.2 Bipolar I Disorder (Manic or Mixed Episodes)

**Monotherapy** — Oral ZYPREXA is indicated for the acute treatment of manic or mixed episodes associated with bipolar I disorder and maintenance treatment of bipolar I disorder. Efficacy was established in three clinical trials in adult patients with manic or mixed episodes of bipolar I disorder: two 3- to 4-week trials and one monotherapy maintenance trial. In adolescent patients with manic or mixed episodes associated with bipolar I disorder (ages 13-17), efficacy was established in one 3-week trial [see *Clinical Studies (14.2)*].

When deciding among the alternative treatments available for adolescents, clinicians should consider the increased potential (in adolescents as compared with adults) for weight gain and hyperlipidemia. Clinicians should consider the potential long-term risks when prescribing to adolescents, and in many cases this may lead them to consider prescribing other drugs first in adolescents [see *Warnings and Precautions* (5.5, 5.6)].

**Adjunctive Therapy to Lithium or Valproate** — Oral ZYPREXA is indicated for the treatment of manic or mixed episodes associated with bipolar I disorder as an adjunct to lithium or valproate. Efficacy was established in two 6-week clinical trials in adults. The effectiveness of adjunctive therapy for longer-term use has not been systematically evaluated in controlled trials [see *Clinical Studies* (14.2)].

### 1.3 Special Considerations in Treating Pediatric Schizophrenia and Bipolar I Disorder

Pediatric schizophrenia and bipolar I disorder are serious mental disorders; however, diagnosis can be challenging. For pediatric schizophrenia, symptom profiles can be variable, and for bipolar I disorder, pediatric patients may have variable patterns of periodicity of manic or mixed symptoms. It is recommended that medication therapy for pediatric schizophrenia and bipolar I disorder be initiated only after a thorough diagnostic evaluation has been performed and careful consideration given to the risks associated with medication treatment. Medication treatment for both pediatric schizophrenia and bipolar I disorder should be part of a total treatment program that often includes psychological, educational and social interventions.

### 1.4 ZYPREXA IntraMuscular: Agitation Associated with Schizophrenia and Bipolar I Mania

ZYPREXA IntraMuscular is indicated for the treatment of acute agitation associated with schizophrenia and bipolar I mania. Efficacy was demonstrated in 3 short-term (24 hours of IM treatment) placebo-controlled trials in agitated adult inpatients with: schizophrenia or bipolar I disorder (manic or mixed episodes) [see *Clinical Studies* (14.3)].

“Psychomotor agitation” is defined in DSM-IV as “excessive motor activity associated with a feeling of inner tension.” Patients experiencing agitation often manifest behaviors that interfere with their diagnosis and care, e.g., threatening behaviors, escalating or urgently distressing behavior, or self-exhausting behavior, leading clinicians to the use of intramuscular antipsychotic medications to achieve immediate control of the agitation.

### 1.5 ZYPREXA and Fluoxetine in Combination: Depressive Episodes Associated with Bipolar I Disorder

Oral ZYPREXA and fluoxetine in combination is indicated for the treatment of depressive episodes associated with bipolar I disorder, based on clinical studies in adult patients. When using ZYPREXA and fluoxetine in combination, refer to the Clinical Studies section of the package insert for Symbyax.

ZYPREXA monotherapy is not indicated for the treatment of depressive episodes associated with bipolar I disorder.

### 1.6 ZYPREXA and Fluoxetine in Combination: Treatment Resistant Depression

Oral ZYPREXA and fluoxetine in combination is indicated for the treatment of treatment resistant depression (major depressive disorder in patients who do not respond to 2 separate trials of different antidepressants of adequate dose and duration in the current episode), based on clinical studies in adult patients. When using ZYPREXA and fluoxetine in combination, refer to the Clinical Studies section of the package insert for Symbyax.

ZYPREXA monotherapy is not indicated for the treatment of treatment resistant depression.

## 2 DOSAGE AND ADMINISTRATION

### 2.1 Schizophrenia

#### Adults

**Dose Selection** — Oral olanzapine should be administered on a once-a-day schedule without regard to meals, generally beginning with 5 to 10 mg initially, with a target dose of 10 mg/day within several days. Further dosage adjustments, if indicated, should generally occur at intervals of not less than 1 week, since steady state for olanzapine would not be achieved for approximately 1 week in the typical patient. When dosage adjustments are necessary, dose increments/decrements of 5 mg QD are recommended.

Efficacy in schizophrenia was demonstrated in a dose range of 10 to 15 mg/day in clinical trials. However, doses above 10 mg/day were not demonstrated to be more efficacious than the 10 mg/day dose. An increase to a dose greater than the target dose of 10 mg/day (i.e., to a dose of 15 mg/day or greater) is recommended only after clinical assessment. Olanzapine is not indicated for use in doses above 20 mg/day.

**Dosing in Special Populations** — The recommended starting dose is 5 mg in patients who are debilitated, who have a predisposition to hypotensive reactions, who otherwise exhibit a combination of factors that may result in slower metabolism of olanzapine (e.g., nonsmoking female patients  $\geq 65$  years of age), or who may be more pharmacodynamically sensitive to olanzapine [see *Warnings and Precautions* (5.14), *Drug Interactions* (7), and *Clinical Pharmacology* (12.3)]. When indicated, dose escalation should be performed with caution in these patients.

**Maintenance Treatment** — The effectiveness of oral olanzapine, 10 mg/day to 20 mg/day, in maintaining treatment response in schizophrenic patients who had been stable on ZYPREXA for approximately 8 weeks and were then followed for relapse has been demonstrated in a placebo-controlled trial [see *Clinical Studies* (14.1)]. The physician who elects to use ZYPREXA for extended periods should periodically reevaluate the long-term usefulness of the drug for the individual patient.

#### Adolescents

**Dose Selection** — Oral olanzapine should be administered on a once-a-day schedule without regard to meals with a recommended starting dose of 2.5 or 5 mg, with a target dose of 10 mg/day. Efficacy in adolescents with schizophrenia was

demonstrated based on a flexible dose range of 2.5 to 20 mg/day in clinical trials, with a mean modal dose of 12.5 mg/day (mean dose of 11.1 mg/day). When dosage adjustments are necessary, dose increments/decrements of 2.5 or 5 mg are recommended.

The safety and effectiveness of doses above 20 mg/day have not been evaluated in clinical trials [see *Clinical Studies (14.1)*].  
**Maintenance Treatment** — The efficacy of ZYPREXA for the maintenance treatment of schizophrenia in the adolescent population has not been systematically evaluated; however, maintenance efficacy can be extrapolated from adult data along with comparisons of olanzapine pharmacokinetic parameters in adult and adolescent patients. Thus, it is generally recommended that responding patients be continued beyond the acute response, but at the lowest dose needed to maintain remission. Patients should be periodically reassessed to determine the need for maintenance treatment.

## 2.2 Bipolar I Disorder (Manic or Mixed Episodes)

### Adults

**Dose Selection for Monotherapy** — Oral olanzapine should be administered on a once-a-day schedule without regard to meals, generally beginning with 10 or 15 mg. Dosage adjustments, if indicated, should generally occur at intervals of not less than 24 hours, reflecting the procedures in the placebo-controlled trials. When dosage adjustments are necessary, dose increments/decrements of 5 mg QD are recommended.

Short-term (3-4 weeks) antimanic efficacy was demonstrated in a dose range of 5 mg to 20 mg/day in clinical trials. The safety of doses above 20 mg/day has not been evaluated in clinical trials [see *Clinical Studies (14.2)*].

**Maintenance Monotherapy** — The benefit of maintaining bipolar I patients on monotherapy with oral ZYPREXA at a dose of 5 to 20 mg/day, after achieving a responder status for an average duration of 2 weeks, was demonstrated in a controlled trial [see *Clinical Studies (14.2)*]. The physician who elects to use ZYPREXA for extended periods should periodically reevaluate the long-term usefulness of the drug for the individual patient.

**Dose Selection for Adjunctive Treatment** — When administered as adjunctive treatment to lithium or valproate, oral olanzapine dosing should generally begin with 10 mg once-a-day without regard to meals.

Antimanic efficacy was demonstrated in a dose range of 5 mg to 20 mg/day in clinical trials [see *Clinical Studies (14.2)*]. The safety of doses above 20 mg/day has not been evaluated in clinical trials.

### Adolescents

**Dose Selection** — Oral olanzapine should be administered on a once-a-day schedule without regard to meals with a recommended starting dose of 2.5 or 5 mg, with a target dose of 10 mg/day. Efficacy in adolescents with bipolar I disorder (manic or mixed episodes) was demonstrated based on a flexible dose range of 2.5 to 20 mg/day in clinical trials, with a mean modal dose of 10.7 mg/day (mean dose of 8.9 mg/day). When dosage adjustments are necessary, dose increments/decrements of 2.5 or 5 mg are recommended.

The safety and effectiveness of doses above 20 mg/day have not been evaluated in clinical trials [see *Clinical Studies (14.2)*].

**Maintenance Treatment** — The efficacy of ZYPREXA for the maintenance treatment of bipolar I disorder in the adolescent population has not been evaluated; however, maintenance efficacy can be extrapolated from adult data along with comparisons of olanzapine pharmacokinetic parameters in adult and adolescent patients. Thus, it is generally recommended that responding patients be continued beyond the acute response, but at the lowest dose needed to maintain remission. Patients should be periodically reassessed to determine the need for maintenance treatment.

## 2.3 Administration of ZYPREXA ZYDIS (olanzapine orally disintegrating tablets)

After opening sachet, peel back foil on blister. Do not push tablet through foil. Immediately upon opening the blister, using dry hands, remove tablet and place entire ZYPREXA ZYDIS in the mouth. Tablet disintegration occurs rapidly in saliva so it can be easily swallowed with or without liquid.

## 2.4 ZYPREXA IntraMuscular: Agitation Associated with Schizophrenia and Bipolar I Mania

**Dose Selection for Agitated Adult Patients with Schizophrenia and Bipolar I Mania** — The efficacy of intramuscular olanzapine for injection in controlling agitation in these disorders was demonstrated in a dose range of 2.5 mg to 10 mg. The recommended dose in these patients is 10 mg. A lower dose of 5 or 7.5 mg may be considered when clinical factors warrant [see *Clinical Studies (14.3)*]. If agitation warranting additional intramuscular doses persists following the initial dose, subsequent doses up to 10 mg may be given. However, the efficacy of repeated doses of intramuscular olanzapine for injection in agitated patients has not been systematically evaluated in controlled clinical trials. Also, the safety of total daily doses greater than 30 mg, or 10 mg injections given more frequently than 2 hours after the initial dose, and 4 hours after the second dose have not been evaluated in clinical trials. Maximal dosing of intramuscular olanzapine (e.g., 3 doses of 10 mg administered 2-4 hours apart) may be associated with a substantial occurrence of significant orthostatic hypotension [see *Warnings and Precautions (5.8)*]. Thus, it is recommended that patients requiring subsequent intramuscular injections be assessed for orthostatic hypotension prior to the administration of any subsequent doses of intramuscular olanzapine for injection. The administration of an additional dose to a patient with a clinically significant postural change in systolic blood pressure is not recommended.

If ongoing olanzapine therapy is clinically indicated, oral olanzapine may be initiated in a range of 5-20 mg/day as soon as clinically appropriate [see *Dosage and Administration (2.1, 2.2)*].

**Intramuscular Dosing in Special Populations** — A dose of 5 mg/injection should be considered for geriatric patients or when other clinical factors warrant. A lower dose of 2.5 mg/injection should be considered for patients who otherwise might be debilitated, be predisposed to hypotensive reactions, or be more pharmacodynamically sensitive to olanzapine [see *Warnings and Precautions (5.14), Drug Interactions (7), and Clinical Pharmacology (12.3)*].

Reference ID: 2870829

Administration of ZYPREXA IntraMuscular — ZYPREXA IntraMuscular is intended for intramuscular use only. Do not administer intravenously or subcutaneously. Inject slowly, deep into the muscle mass.

Parenteral drug products should be inspected visually for particulate matter and discoloration prior to administration, whenever solution and container permit.

Directions for Preparation of ZYPREXA IntraMuscular with Sterile Water for Injection — Dissolve the contents of the vial using 2.1 mL of Sterile Water for Injection to provide a solution containing approximately 5 mg/mL of olanzapine. The resulting solution should appear clear and yellow. ZYPREXA IntraMuscular reconstituted with Sterile Water for Injection should be used immediately (within 1 hour) after reconstitution. *Discard any unused portion.*

The following table provides injection volumes for delivering various doses of intramuscular olanzapine for injection reconstituted with Sterile Water for Injection.

<u>Dose, mg Olanzapine</u>	<u>Volume of Injection, mL</u>
10	Withdraw total contents of vial
7.5	1.5
5	1
2.5	0.5

Physical Incompatibility Information — ZYPREXA IntraMuscular should be reconstituted only with Sterile Water for Injection. ZYPREXA IntraMuscular should not be combined in a syringe with diazepam injection because precipitation occurs when these products are mixed. Lorazepam injection should not be used to reconstitute ZYPREXA IntraMuscular as this combination results in a delayed reconstitution time. ZYPREXA IntraMuscular should not be combined in a syringe with haloperidol injection because the resulting low pH has been shown to degrade olanzapine over time.

**2.5 ZYPREXA and Fluoxetine in Combination: Depressive Episodes Associated with Bipolar I Disorder**

When using ZYPREXA and fluoxetine in combination, also refer to the Clinical Studies section of the package insert for Symbyax.

Oral olanzapine should be administered in combination with fluoxetine once daily in the evening, without regard to meals, generally beginning with 5 mg of oral olanzapine and 20 mg of fluoxetine. Dosage adjustments, if indicated, can be made according to efficacy and tolerability within dose ranges of oral olanzapine 5 to 12.5 mg and fluoxetine 20 to 50 mg. Antidepressant efficacy was demonstrated with ZYPREXA and fluoxetine in combination in adult patients with a dose range of olanzapine 6 to 12 mg and fluoxetine 25 to 50 mg.

Safety and efficacy of ZYPREXA and fluoxetine in combination was determined in clinical trials supporting approval of Symbyax (fixed dose combination of ZYPREXA and fluoxetine). Symbyax is dosed between 3 mg/25 mg (olanzapine/fluoxetine) per day and 12 mg/50 mg (olanzapine/fluoxetine) per day. The following table demonstrates the appropriate individual component doses of ZYPREXA and fluoxetine versus Symbyax. Dosage adjustments, if indicated, should be made with the individual components according to efficacy and tolerability.

**Table 1: Approximate Dose Correspondence Between Symbyax<sup>a</sup> and the Combination of ZYPREXA and Fluoxetine**

<b>For Symbyax (mg/day)</b>	<b>Use in Combination</b>	
	<b>ZYPREXA (mg/day)</b>	<b>Fluoxetine (mg/day)</b>
3 mg olanzapine/25 mg fluoxetine	2.5	20
6 mg olanzapine/25 mg fluoxetine	5	20
12 mg olanzapine/25 mg fluoxetine	10+2.5	20
6 mg olanzapine/50 mg fluoxetine	5	40+10
12 mg olanzapine/50 mg fluoxetine	10+2.5	40+10

<sup>a</sup> Symbyax (olanzapine/fluoxetine HCl) is a fixed-dose combination of ZYPREXA and fluoxetine.

While there is no body of evidence to answer the question of how long a patient treated with ZYPREXA and fluoxetine in combination should remain on it, it is generally accepted that bipolar I disorder, including the depressive episodes associated with bipolar I disorder, is a chronic illness requiring chronic treatment. The physician should periodically reexamine the need for continued pharmacotherapy.

Safety of co-administration of doses above 18 mg olanzapine with 75 mg fluoxetine has not been evaluated in clinical studies. ZYPREXA monotherapy is not indicated for the treatment of depressive episodes associated with bipolar I disorder.

**2.6 ZYPREXA and Fluoxetine in Combination: Treatment Resistant Depression**

When using ZYPREXA and fluoxetine in combination, also refer to the Clinical Studies section of the package insert for Symbyax.

Oral olanzapine should be administered in combination with fluoxetine once daily in the evening, without regard to meals, generally beginning with 5 mg of oral olanzapine and 20 mg of fluoxetine. Dosage adjustments, if indicated, can be made according to efficacy and tolerability within dose ranges of oral olanzapine 5 to 20 mg and fluoxetine 20 to 50 mg. Antidepressant efficacy was

demonstrated with olanzapine and fluoxetine in combination in adult patients with a dose range of olanzapine 6 to 18 mg and fluoxetine 25 to 50 mg.

Safety and efficacy of olanzapine in combination with fluoxetine was determined in clinical trials supporting approval of Symbyax (fixed dose combination of olanzapine and fluoxetine). Symbyax is dosed between 3 mg/25 mg (olanzapine/fluoxetine) per day and 12 mg/50 mg (olanzapine/fluoxetine) per day. Table 1 above demonstrates the appropriate individual component doses of ZYPREXA and fluoxetine versus Symbyax. Dosage adjustments, if indicated, should be made with the individual components according to efficacy and tolerability.

While there is no body of evidence to answer the question of how long a patient treated with ZYPREXA and fluoxetine in combination should remain on it, it is generally accepted that treatment resistant depression (major depressive disorder in adult patients who do not respond to 2 separate trials of different antidepressants of adequate dose and duration in the current episode) is a chronic illness requiring chronic treatment. The physician should periodically reexamine the need for continued pharmacotherapy.

Safety of co-administration of doses above 18 mg olanzapine with 75 mg fluoxetine has not been evaluated in clinical studies. ZYPREXA monotherapy is not indicated for treatment of treatment resistant depression (major depressive disorder in patients who do not respond to 2 antidepressants of adequate dose and duration in the current episode).

### 2.7 ZYPREXA and Fluoxetine in Combination: Dosing in Special Populations

The starting dose of oral olanzapine 2.5-5 mg with fluoxetine 20 mg should be used for patients with a predisposition to hypotensive reactions, patients with hepatic impairment, or patients who exhibit a combination of factors that may slow the metabolism of olanzapine or fluoxetine in combination (female gender, geriatric age, nonsmoking status), or those patients who may be pharmacodynamically sensitive to olanzapine. Dosing modification may be necessary in patients who exhibit a combination of factors that may slow metabolism. When indicated, dose escalation should be performed with caution in these patients. ZYPREXA and fluoxetine in combination have not been systematically studied in patients over 65 years of age or in patients <18 years of age [see *Warnings and Precautions (5.14), Drug Interactions (7), and Clinical Pharmacology (12.3)*].

### 3 DOSAGE FORMS AND STRENGTHS

The ZYPREXA 2.5 mg, 5 mg, 7.5 mg, and 10 mg tablets are white, round, and imprinted in blue ink with LILLY and tablet number. The 15 mg tablets are elliptical, blue, and debossed with LILLY and tablet number. The 20 mg tablets are elliptical, pink, and debossed with LILLY and tablet number. Tablets are not scored. The tablets are available as follows:

	TABLET STRENGTH					
	2.5 mg	5 mg	7.5 mg	10 mg	15 mg	20 mg
Tablet No.	4112	4115	4116	4117	4415	4420
Identification	LILLY 4112	LILLY 4115	LILLY 4116	LILLY 4117	LILLY 4415	LILLY 4420

ZYPREXA ZYDIS (olanzapine orally disintegrating tablets) are yellow, round, and debossed with the tablet strength. Tablets are not scored. The tablets are available as follows:

ZYPREXA ZYDIS Tablets	TABLET STRENGTH			
	5 mg	10 mg	15 mg	20 mg
Tablet No.	4453	4454	4455	4456
Debossed	5	10	15	20

ZYPREXA IntraMuscular is available in 10 mg vial (1s).

### 4 CONTRAINDICATIONS

- None with ZYPREXA monotherapy.
- When using ZYPREXA and fluoxetine in combination, also refer to the Contraindications section of the package insert for Symbyax.
- For specific information about the contraindications of lithium or valproate, refer to the Contraindications section of the package inserts for these other products.

### 5 WARNINGS AND PRECAUTIONS

When using ZYPREXA and fluoxetine in combination, also refer to the Warnings and Precautions section of the package insert for Symbyax.

#### 5.1 Elderly Patients with Dementia-Related Psychosis

**Increased Mortality** — Elderly patients with dementia-related psychosis treated with antipsychotic drugs are at an increased risk of death. ZYPREXA is not approved for the treatment of patients with dementia-related psychosis [see *Boxed Warning, Warnings and Precautions (5.14), and Patient Counseling Information (17.2)*].

In placebo-controlled clinical trials of elderly patients with dementia-related psychosis, the incidence of death in olanzapine-treated patients was significantly greater than placebo-treated patients (3.5% vs 1.5%, respectively).

**Cerebrovascular Adverse Events (CVAE), Including Stroke** — Cerebrovascular adverse events (e.g., stroke, transient ischemic attack, and other cerebrovascular events), were reported in patients in trials of olanzapine in elderly patients with dementia-related

247 psychosis. In placebo-controlled trials, there was a significantly higher incidence of cerebrovascular adverse events in patients treated  
248 with olanzapine compared to patients treated with placebo. Olanzapine is not approved for the treatment of patients with dementia-  
249 related psychosis [see *Boxed Warning and Patient Counseling Information (17.2)*].

## 250 5.2 Suicide

251 The possibility of a suicide attempt is inherent in schizophrenia and in bipolar I disorder, and close supervision of high-risk  
252 patients should accompany drug therapy. Prescriptions for olanzapine should be written for the smallest quantity of tablets consistent  
253 with good patient management, in order to reduce the risk of overdose.

## 254 5.3 Neuroleptic Malignant Syndrome (NMS)

255 A potentially fatal symptom complex sometimes referred to as Neuroleptic Malignant Syndrome (NMS) has been reported in  
256 association with administration of antipsychotic drugs, including olanzapine. Clinical manifestations of NMS are hyperpyrexia,  
257 muscle rigidity, altered mental status and evidence of autonomic instability (irregular pulse or blood pressure, tachycardia, diaphoresis  
258 and cardiac dysrhythmia). Additional signs may include elevated creatinine phosphokinase, myoglobinuria (rhabdomyolysis), and  
259 acute renal failure.

260 The diagnostic evaluation of patients with this syndrome is complicated. In arriving at a diagnosis, it is important to exclude  
261 cases where the clinical presentation includes both serious medical illness (e.g., pneumonia, systemic infection, etc.) and untreated or  
262 inadequately treated extrapyramidal signs and symptoms (EPS). Other important considerations in the differential diagnosis include  
263 central anticholinergic toxicity, heat stroke, drug fever, and primary central nervous system pathology.

264 The management of NMS should include: 1) immediate discontinuation of antipsychotic drugs and other drugs not essential to  
265 concurrent therapy; 2) intensive symptomatic treatment and medical monitoring; and 3) treatment of any concomitant serious medical  
266 problems for which specific treatments are available. There is no general agreement about specific pharmacological treatment  
267 regimens for NMS.

268 If a patient requires antipsychotic drug treatment after recovery from NMS, the potential reintroduction of drug therapy should  
269 be carefully considered. The patient should be carefully monitored, since recurrences of NMS have been reported [see *Patient*  
270 *Counseling Information (17.3)*].

## 271 5.4 Hyperglycemia

272 Physicians should consider the risks and benefits when prescribing olanzapine to patients with an established diagnosis of  
273 diabetes mellitus, or having borderline increased blood glucose level (fasting 100-126 mg/dL, nonfasting 140-200 mg/dL). Patients  
274 taking olanzapine should be monitored regularly for worsening of glucose control. Patients starting treatment with olanzapine should  
275 undergo fasting blood glucose testing at the beginning of treatment and periodically during treatment. Any patient treated with  
276 atypical antipsychotics should be monitored for symptoms of hyperglycemia including polydipsia, polyuria, polyphagia, and  
277 weakness. Patients who develop symptoms of hyperglycemia during treatment with atypical antipsychotics should undergo fasting  
278 blood glucose testing. In some cases, hyperglycemia has resolved when the atypical antipsychotic was discontinued; however, some  
279 patients required continuation of anti-diabetic treatment despite discontinuation of the suspect drug [see *Patient Counseling*  
280 *Information (17.4)*].

281 Hyperglycemia, in some cases extreme and associated with ketoacidosis or hyperosmolar coma or death, has been reported in  
282 patients treated with atypical antipsychotics including olanzapine. Assessment of the relationship between atypical antipsychotic use  
283 and glucose abnormalities is complicated by the possibility of an increased background risk of diabetes mellitus in patients with  
284 schizophrenia and the increasing incidence of diabetes mellitus in the general population. Epidemiological studies suggest an  
285 increased risk of treatment-emergent hyperglycemia-related adverse reactions in patients treated with the atypical antipsychotics.  
286 While relative risk estimates are inconsistent, the association between atypical antipsychotics and increases in glucose levels appears  
287 to fall on a continuum and olanzapine appears to have a greater association than some other atypical antipsychotics.

288 Mean increases in blood glucose have been observed in patients treated (median exposure of 9.2 months) with olanzapine in  
289 phase 1 of the Clinical Antipsychotic Trials of Intervention Effectiveness (CATIE). The mean increase of serum glucose (fasting and  
290 nonfasting samples) from baseline to the average of the 2 highest serum concentrations was 15.0 mg/dL.

291 In a study of healthy volunteers, subjects who received olanzapine (N=22) for 3 weeks had a mean increase compared to  
292 baseline in fasting blood glucose of 2.3 mg/dL. Placebo-treated subjects (N=19) had a mean increase in fasting blood glucose  
293 compared to baseline of 0.34 mg/dL.

294 **Olanzapine Monotherapy in Adults** — In an analysis of 5 placebo-controlled adult olanzapine monotherapy studies with a  
295 median treatment duration of approximately 3 weeks, olanzapine was associated with a greater mean change in fasting glucose levels  
296 compared to placebo (2.76 mg/dL versus 0.17 mg/dL). The difference in mean changes between olanzapine and placebo was greater in  
297 patients with evidence of glucose dysregulation at baseline (patients diagnosed with diabetes mellitus or related adverse reactions,  
298 patients treated with anti-diabetic agents, patients with a baseline random glucose level  $\geq 200$  mg/dL, and/or a baseline fasting glucose  
299 level  $\geq 126$  mg/dL). Olanzapine-treated patients had a greater mean HbA1c increase from baseline of 0.04% (median exposure 21  
300 days), compared to a mean HbA1c decrease of 0.06% in placebo-treated subjects (median exposure 17 days).

301 In an analysis of 8 placebo-controlled studies (median treatment exposure 4-5 weeks), 6.1% of olanzapine-treated subjects  
302 (N=855) had treatment-emergent glycosuria compared to 2.8% of placebo-treated subjects (N=599). Table 2 shows short-term and  
303 long-term changes in fasting glucose levels from adult olanzapine monotherapy studies.

Table 2: Changes in Fasting Glucose Levels from Adult Olanzapine Monotherapy Studies

	Up to 12 weeks	At least 48 weeks
Reference ID: 2870829		

Laboratory Analyte	Category Change (at least once) from Baseline	Treatment Arm	exposure		exposure	
			N	Patients	N	Patients
Fasting Glucose	Normal to High (<100 mg/dL to ≥126 mg/dL)	Olanzapine	543	2.2%	345	12.8%
		Placebo	293	3.4%	NA <sup>a</sup>	NA <sup>a</sup>
	Borderline to High (≥100 mg/dL and <126 mg/dL to ≥126 mg/dL)	Olanzapine	178	17.4%	127	26.0%
		Placebo	96	11.5%	NA <sup>a</sup>	NA <sup>a</sup>

<sup>a</sup> Not Applicable.

The mean change in fasting glucose for patients exposed at least 48 weeks was 4.2 mg/dL (N=487). In analyses of patients who completed 9-12 months of olanzapine therapy, mean change in fasting and nonfasting glucose levels continued to increase over time.

**Olanzapine Monotherapy in Adolescents** — The safety and efficacy of olanzapine have not been established in patients under the age of 13 years. In an analysis of 3 placebo-controlled olanzapine monotherapy studies of adolescent patients, including those with schizophrenia (6 weeks) or bipolar I disorder (manic or mixed episodes) (3 weeks), olanzapine was associated with a greater mean change from baseline in fasting glucose levels compared to placebo (2.68 mg/dL versus -2.59 mg/dL). The mean change in fasting glucose for adolescents exposed at least 24 weeks was 3.1 mg/dL (N=121). Table 3 shows short-term and long-term changes in fasting blood glucose from adolescent olanzapine monotherapy studies.

**Table 3: Changes in Fasting Glucose Levels from Adolescent Olanzapine Monotherapy Studies**

Laboratory Analyte	Category Change (at least once) from Baseline	Treatment Arm	Up to 12 weeks exposure		At least 24 weeks exposure	
			N	Patients	N	Patients
Fasting Glucose	Normal to High (<100 mg/dL to ≥126 mg/dL)	Olanzapine	124	0%	108	0.9%
		Placebo	53	1.9%	NA <sup>a</sup>	NA <sup>a</sup>
	Borderline to High (≥100 mg/dL and <126 mg/dL to ≥126 mg/dL)	Olanzapine	14	14.3%	13	23.1%
		Placebo	13	0%	NA <sup>a</sup>	NA <sup>a</sup>

<sup>a</sup> Not Applicable.

## 5.5 Hyperlipidemia

Undesirable alterations in lipids have been observed with olanzapine use. Clinical monitoring, including baseline and periodic follow-up lipid evaluations in patients using olanzapine, is recommended [see Patient Counseling Information (17.5)].

Clinically significant, and sometimes very high (>500 mg/dL), elevations in triglyceride levels have been observed with olanzapine use. Modest mean increases in total cholesterol have also been seen with olanzapine use.

**Olanzapine Monotherapy in Adults** — In an analysis of 5 placebo-controlled olanzapine monotherapy studies with treatment duration up to 12 weeks, olanzapine-treated patients had increases from baseline in mean fasting total cholesterol, LDL cholesterol, and triglycerides of 5.3 mg/dL, 3.0 mg/dL, and 20.8 mg/dL respectively compared to decreases from baseline in mean fasting total cholesterol, LDL cholesterol, and triglycerides of 6.1 mg/dL, 4.3 mg/dL, and 10.7 mg/dL for placebo-treated patients. For fasting HDL cholesterol, no clinically meaningful differences were observed between olanzapine-treated patients and placebo-treated patients. Mean increases in fasting lipid values (total cholesterol, LDL cholesterol, and triglycerides) were greater in patients without evidence of lipid dysregulation at baseline, where lipid dysregulation was defined as patients diagnosed with dyslipidemia or related adverse reactions, patients treated with lipid lowering agents, or patients with high baseline lipid levels.

In long-term studies (at least 48 weeks), patients had increases from baseline in mean fasting total cholesterol, LDL cholesterol, and triglycerides of 5.6 mg/dL, 2.5 mg/dL, and 18.7 mg/dL, respectively, and a mean decrease in fasting HDL cholesterol of 0.16 mg/dL. In an analysis of patients who completed 12 months of therapy, the mean nonfasting total cholesterol did not increase further after approximately 4-6 months.

The proportion of patients who had changes (at least once) in total cholesterol, LDL cholesterol or triglycerides from normal or borderline to high, or changes in HDL cholesterol from normal or borderline to low, was greater in long-term studies (at least 48 weeks) as compared with short-term studies. Table 4 shows categorical changes in fasting lipids values.

**Table 4: Changes in Fasting Lipids Values from Adult Olanzapine Monotherapy Studies**

Laboratory Analyte	Category Change (at least once) from Baseline	Treatment Arm	Up to 12 weeks exposure		At least 48 weeks exposure	
			N	Patients	N	Patients
Fasting	Increase by ≥50 mg/dL	Olanzapine	745	39.6%	487	61.4%
		Placebo	402	26.1%	NA <sup>a</sup>	NA <sup>a</sup>
	Normal to High	Olanzapine	457	9.2%	293	32.4%

Triglycerides	( $<150$ mg/dL to $\geq 200$ mg/dL)	Placebo	251	4.4%	NA <sup>a</sup>	NA <sup>a</sup>
	Borderline to High ( $\geq 150$ mg/dL and $<200$ mg/dL to $\geq 200$ mg/dL)	Olanzapine	135	39.3%	75	70.7%
		Placebo	65	20.0%	NA <sup>a</sup>	NA <sup>a</sup>
Fasting Total Cholesterol	Increase by $\geq 40$ mg/dL	Olanzapine	745	21.6%	489	32.9%
		Placebo	402	9.5%	NA <sup>a</sup>	NA <sup>a</sup>
	Normal to High ( $<200$ mg/dL to $\geq 240$ mg/dL)	Olanzapine	392	2.8%	283	14.8%
		Placebo	207	2.4%	NA <sup>a</sup>	NA <sup>a</sup>
	Borderline to High ( $\geq 200$ mg/dL and $<240$ mg/dL to $\geq 240$ mg/dL)	Olanzapine	222	23.0%	125	55.2%
		Placebo	112	12.5%	NA <sup>a</sup>	NA <sup>a</sup>
Fasting LDL Cholesterol	Increase by $\geq 30$ mg/dL	Olanzapine	536	23.7%	483	39.8%
		Placebo	304	14.1%	NA <sup>a</sup>	NA <sup>a</sup>
	Normal to High ( $<100$ mg/dL to $\geq 160$ mg/dL)	Olanzapine	154	0%	123	7.3%
		Placebo	82	1.2%	NA <sup>a</sup>	NA <sup>a</sup>
	Borderline to High ( $\geq 100$ mg/dL and $<160$ mg/dL to $\geq 160$ mg/dL)	Olanzapine	302	10.6%	284	31.0%
		Placebo	173	8.1%	NA <sup>a</sup>	NA <sup>a</sup>

<sup>a</sup> Not Applicable.

In phase 1 of the Clinical Antipsychotic Trials of Intervention Effectiveness (CATIE), over a median exposure of 9.2 months, the mean increase in triglycerides in patients taking olanzapine was 40.5 mg/dL. In phase 1 of CATIE, the mean increase in total cholesterol was 9.4 mg/dL.

**Olanzapine Monotherapy in Adolescents** — The safety and efficacy of olanzapine have not been established in patients under the age of 13 years. In an analysis of 3 placebo-controlled olanzapine monotherapy studies of adolescents, including those with schizophrenia (6 weeks) or bipolar I disorder (manic or mixed episodes) (3 weeks), olanzapine-treated adolescents had increases from baseline in mean fasting total cholesterol, LDL cholesterol, and triglycerides of 12.9 mg/dL, 6.5 mg/dL, and 28.4 mg/dL, respectively, compared to increases from baseline in mean fasting total cholesterol and LDL cholesterol of 1.3 mg/dL and 1.0 mg/dL, and a decrease in triglycerides of 1.1 mg/dL for placebo-treated adolescents. For fasting HDL cholesterol, no clinically meaningful differences were observed between olanzapine-treated adolescents and placebo-treated adolescents.

In long-term studies (at least 24 weeks), adolescents had increases from baseline in mean fasting total cholesterol, LDL cholesterol, and triglycerides of 5.5 mg/dL, 5.4 mg/dL, and 20.5 mg/dL, respectively, and a mean decrease in fasting HDL cholesterol of 4.5 mg/dL. Table 5 shows categorical changes in fasting lipids values in adolescents.

**Table 5: Changes in Fasting Lipids Values from Adolescent Olanzapine Monotherapy Studies**

Laboratory Analyte	Category Change (at least once) from Baseline	Treatment Arm	Up to 6 weeks exposure		At least 24 weeks exposure	
			N	Patients	N	Patients
Fasting Triglycerides	Increase by $\geq 50$ mg/dL	Olanzapine	138	37.0%	122	45.9%
		Placebo	66	15.2%	NA <sup>a</sup>	NA <sup>a</sup>
	Normal to High ( $<90$ mg/dL to $>130$ mg/dL)	Olanzapine	67	26.9%	66	36.4%
		Placebo	28	10.7%	NA <sup>a</sup>	NA <sup>a</sup>
	Borderline to High ( $\geq 90$ mg/dL and $\leq 130$ mg/dL to $>130$ mg/dL)	Olanzapine	37	59.5%	31	64.5%
		Placebo	17	35.3%	NA <sup>a</sup>	NA <sup>a</sup>
Fasting Total Cholesterol	Increase by $\geq 40$ mg/dL	Olanzapine	138	14.5%	122	14.8%
		Placebo	66	4.5%	NA <sup>a</sup>	NA <sup>a</sup>
	Normal to High ( $<170$ mg/dL to $\geq 200$ mg/dL)	Olanzapine	87	6.9%	78	7.7%
		Placebo	43	2.3%	NA <sup>a</sup>	NA <sup>a</sup>
	Borderline to High ( $\geq 170$ mg/dL and $<200$ mg/dL to $\geq 200$ mg/dL)	Olanzapine	36	38.9%	33	57.6%
		Placebo	13	7.7%	NA <sup>a</sup>	NA <sup>a</sup>
Fasting LDL Cholesterol	Increase by $\geq 30$ mg/dL	Olanzapine	137	17.5%	121	22.3%
		Placebo	63	11.1%	NA <sup>a</sup>	NA <sup>a</sup>
	Normal to High ( $<110$ mg/dL to $\geq 130$ mg/dL)	Olanzapine	98	5.1%	92	10.9%
		Placebo	44	4.5%	NA <sup>a</sup>	NA <sup>a</sup>
	Borderline to High ( $\geq 110$ mg/dL and $<130$ mg/dL to $\geq 130$ mg/dL)	Olanzapine	29	48.3%	21	47.6%
		Placebo	9	0%	NA <sup>a</sup>	NA <sup>a</sup>

<sup>a</sup> Not Applicable.

### 5.6 Weight Gain

Potential consequences of weight gain should be considered prior to starting olanzapine. Patients receiving olanzapine should receive regular monitoring of weight [see *Patient Counseling Information* (17.6)].

**Olanzapine Monotherapy in Adults** — In an analysis of 13 placebo-controlled olanzapine monotherapy studies, olanzapine-treated patients gained an average of 2.6 kg (5.7 lb) compared to an average 0.3 kg (0.6 lb) weight loss in placebo-treated patients with a median exposure of 6 weeks; 22.2% of olanzapine-treated patients gained at least 7% of their baseline weight, compared to 3% of placebo-treated patients, with a median exposure to event of 8 weeks; 4.2% of olanzapine-treated patients gained at least 15% of their baseline weight, compared to 0.3% of placebo-treated patients, with a median exposure to event of 12 weeks. Clinically significant weight gain was observed across all baseline Body Mass Index (BMI) categories. Discontinuation due to weight gain occurred in 0.2% of olanzapine-treated patients and in 0% of placebo-treated patients.

In long-term studies (at least 48 weeks), the mean weight gain was 5.6 kg (12.3 lb) (median exposure of 573 days, N=2021). The percentages of patients who gained at least 7%, 15%, or 25% of their baseline body weight with long-term exposure were 64%, 32%, and 12%, respectively. Discontinuation due to weight gain occurred in 0.4% of olanzapine-treated patients following at least 48 weeks of exposure.

Table 6 includes data on adult weight gain with olanzapine pooled from 86 clinical trials. The data in each column represent data for those patients who completed treatment periods of the durations specified.

**Table 6: Weight Gain with Olanzapine Use in Adults**

Amount Gained kg (lb)	6 Weeks (N=7465) (%)	6 Months (N=4162) (%)	12 Months (N=1345) (%)	24 Months (N=474) (%)	36 Months (N=147) (%)
≤0	26.2	24.3	20.8	23.2	17.0
0 to ≤5 (0-11 lb)	57.0	36.0	26.0	23.4	25.2
>5 to ≤10 (11-22 lb)	14.9	24.6	24.2	24.1	18.4
>10 to ≤15 (22-33 lb)	1.8	10.9	14.9	11.4	17.0
>15 to ≤20 (33-44 lb)	0.1	3.1	8.6	9.3	11.6
>20 to ≤25 (44-55 lb)	0	0.9	3.3	5.1	4.1
>25 to ≤30 (55-66 lb)	0	0.2	1.4	2.3	4.8
>30 (>66 lb)	0	0.1	0.8	1.2	2

**Olanzapine Monotherapy in Adolescents** — The safety and efficacy of olanzapine have not been established in patients under the age of 13 years. Mean increase in weight in adolescents was greater than in adults. In 4 placebo-controlled trials, discontinuation due to weight gain occurred in 1% of olanzapine-treated patients, compared to 0% of placebo-treated patients.

**Table 7: Weight Gain with Olanzapine Use in Adolescents from 4 Placebo-Controlled Trials**

	Olanzapine-treated patients	Placebo-treated patients
Mean change in body weight from baseline (median exposure = 3 weeks)	4.6 kg (10.1 lb)	0.3 kg (0.7 lb)
Percentage of patients who gained at least 7% of baseline body weight	40.6% (median exposure to 7% = 4 weeks)	9.8% (median exposure to 7% = 8 weeks)
Percentage of patients who gained at least 15% of baseline body weight	7.1% (median exposure to 15% = 19 weeks)	2.7% (median exposure to 15% = 8 weeks)

In long-term studies (at least 24 weeks), the mean weight gain was 11.2 kg (24.6 lb); (median exposure of 201 days, N=179). The percentages of adolescents who gained at least 7%, 15%, or 25% of their baseline body weight with long-term exposure were 89%, 55%, and 29%, respectively. Among adolescent patients, mean weight gain by baseline BMI category was 11.5 kg (25.3 lb), 12.1 kg (26.6 lb), and 12.7 kg (27.9 lb), respectively, for normal (N=106), overweight (N=26) and obese (N=17). Discontinuation due to weight gain occurred in 2.2% of olanzapine-treated patients following at least 24 weeks of exposure.

Table 8 shows data on adolescent weight gain with olanzapine pooled from 6 clinical trials. The data in each column represent data for those patients who completed treatment periods of the durations specified. Little clinical trial data is available on weight gain in adolescents with olanzapine beyond 6 months of treatment.

**Table 8: Weight Gain with Olanzapine Use in Adolescents**

Amount Gained kg (lb)	6 Weeks (N=243) (%)	6 Months (N=191) (%)
≤0	2.9	2.1

0 to ≤5 (0-11 lb)	47.3	24.6
>5 to ≤10 (11-22 lb)	42.4	26.7
>10 to ≤15 (22-33 lb)	5.8	22.0
>15 to ≤20 (33-44 lb)	0.8	12.6
>20 to ≤25 (44-55 lb)	0.8	9.4
>25 to ≤30 (55-66 lb)	0	2.1
>30 to ≤35 (66-77 lb)	0	0
>35 to ≤40 (77-88 lb)	0	0
>40 (>88 lb)	0	0.5

397

398

399

400

401

402

403

404

405

406

407

408

409

410

411

412

413

414

415

416

417

418

419

420

421

422

423

424

425

426

427

428

429

430

431

432

433

434

435

436

437

438

439

440

441

442

443

444

445

446

### 5.7 Tardive Dyskinesia

A syndrome of potentially irreversible, involuntary, dyskinetic movements may develop in patients treated with antipsychotic drugs. Although the prevalence of the syndrome appears to be highest among the elderly, especially elderly women, it is impossible to rely upon prevalence estimates to predict, at the inception of antipsychotic treatment, which patients are likely to develop the syndrome. Whether antipsychotic drug products differ in their potential to cause tardive dyskinesia is unknown.

The risk of developing tardive dyskinesia and the likelihood that it will become irreversible are believed to increase as the duration of treatment and the total cumulative dose of antipsychotic drugs administered to the patient increase. However, the syndrome can develop, although much less commonly, after relatively brief treatment periods at low doses or may even arise after discontinuation of treatment.

There is no known treatment for established cases of tardive dyskinesia, although the syndrome may remit, partially or completely, if antipsychotic treatment is withdrawn. Antipsychotic treatment, itself, however, may suppress (or partially suppress) the signs and symptoms of the syndrome and thereby may possibly mask the underlying process. The effect that symptomatic suppression has upon the long-term course of the syndrome is unknown.

Given these considerations, olanzapine should be prescribed in a manner that is most likely to minimize the occurrence of tardive dyskinesia. Chronic antipsychotic treatment should generally be reserved for patients (1) who suffer from a chronic illness that is known to respond to antipsychotic drugs, and (2) for whom alternative, equally effective, but potentially less harmful treatments are not available or appropriate. In patients who do require chronic treatment, the smallest dose and the shortest duration of treatment producing a satisfactory clinical response should be sought. The need for continued treatment should be reassessed periodically.

If signs and symptoms of tardive dyskinesia appear in a patient on olanzapine, drug discontinuation should be considered. However, some patients may require treatment with olanzapine despite the presence of the syndrome.

For specific information about the warnings of lithium or valproate, refer to the Warnings section of the package inserts for these other products.

### 5.8 Orthostatic Hypotension

Olanzapine may induce orthostatic hypotension associated with dizziness, tachycardia, bradycardia and, in some patients, syncope, especially during the initial dose-titration period, probably reflecting its  $\alpha_1$ -adrenergic antagonistic properties [see *Patient Counseling Information* (17.7)].

For oral olanzapine therapy, the risk of orthostatic hypotension and syncope may be minimized by initiating therapy with 5 mg QD [see *Dosage and Administration* (2)]. A more gradual titration to the target dose should be considered if hypotension occurs.

Hypotension, bradycardia with or without hypotension, tachycardia, and syncope were also reported during the clinical trials with intramuscular olanzapine for injection. In an open-label clinical pharmacology study in nonagitated patients with schizophrenia in which the safety and tolerability of intramuscular olanzapine were evaluated under a maximal dosing regimen (three 10 mg doses administered 4 hours apart), approximately one-third of these patients experienced a significant orthostatic decrease in systolic blood pressure (i.e., decrease  $\geq 30$  mmHg) [see *Dosage and Administration* (2.4)]. Syncope was reported in 0.6% (15/2500) of olanzapine-treated patients in phase 2-3 oral olanzapine studies and in 0.3% (2/722) of olanzapine-treated patients with agitation in the intramuscular olanzapine for injection studies. Three normal volunteers in phase 1 studies with intramuscular olanzapine experienced hypotension, bradycardia, and sinus pauses of up to 6 seconds that spontaneously resolved (in 2 cases the reactions occurred on intramuscular olanzapine, and in 1 case, on oral olanzapine). The risk for this sequence of hypotension, bradycardia, and sinus pause may be greater in nonpsychiatric patients compared to psychiatric patients who are possibly more adapted to certain effects of psychotropic drugs. For intramuscular olanzapine for injection therapy, patients should remain recumbent if drowsy or dizzy after injection until examination has indicated that they are not experiencing postural hypotension, bradycardia, and/or hypoventilation.

Olanzapine should be used with particular caution in patients with known cardiovascular disease (history of myocardial infarction or ischemia, heart failure, or conduction abnormalities), cerebrovascular disease, and conditions which would predispose patients to hypotension (dehydration, hypovolemia, and treatment with antihypertensive medications) where the occurrence of syncope, or hypotension and/or bradycardia might put the patient at increased medical risk.

Caution is necessary in patients who receive treatment with other drugs having effects that can induce hypotension, bradycardia, respiratory or central nervous system depression [see *Drug Interactions* (7)]. Concomitant administration of intramuscular olanzapine and parenteral benzodiazepine is not recommended due to the potential for excessive sedation and cardiorespiratory depression.

### 5.9 Leukopenia, Neutropenia, and Agranulocytosis

Reference ID: 2870829

447 **Class Effect** — In clinical trial and/or postmarketing experience, events of leukopenia/neutropenia have been reported  
448 temporally related to antipsychotic agents, including ZYPREXA. Agranulocytosis has also been reported.

449 Possible risk factors for leukopenia/neutropenia include pre-existing low white blood cell count (WBC) and history of drug  
450 induced leukopenia/neutropenia. Patients with a history of a clinically significant low WBC or drug induced leukopenia/neutropenia  
451 should have their complete blood count (CBC) monitored frequently during the first few months of therapy and discontinuation of  
452 ZYPREXA should be considered at the first sign of a clinically significant decline in WBC in the absence of other causative factors.

453 Patients with clinically significant neutropenia should be carefully monitored for fever or other symptoms or signs of infection  
454 and treated promptly if such symptoms or signs occur. Patients with severe neutropenia (absolute neutrophil count  $<1000/\text{mm}^3$ ) should  
455 discontinue ZYPREXA and have their WBC followed until recovery.

#### 456 **5.10 Dysphagia**

457 Esophageal dysmotility and aspiration have been associated with antipsychotic drug use. Aspiration pneumonia is a common  
458 cause of morbidity and mortality in patients with advanced Alzheimer's disease. Olanzapine is not approved for the treatment of  
459 patients with Alzheimer's disease.

#### 460 **5.11 Seizures**

461 During premarketing testing, seizures occurred in 0.9% (22/2500) of olanzapine-treated patients. There were confounding  
462 factors that may have contributed to the occurrence of seizures in many of these cases. Olanzapine should be used cautiously in  
463 patients with a history of seizures or with conditions that potentially lower the seizure threshold, e.g., Alzheimer's dementia.  
464 Olanzapine is not approved for the treatment of patients with Alzheimer's disease. Conditions that lower the seizure threshold may be  
465 more prevalent in a population of 65 years or older.

#### 466 **5.12 Potential for Cognitive and Motor Impairment**

467 Somnolence was a commonly reported adverse reaction associated with olanzapine treatment, occurring at an incidence of  
468 26% in olanzapine patients compared to 15% in placebo patients. This adverse reaction was also dose related. Somnolence led to  
469 discontinuation in 0.4% (9/2500) of patients in the premarketing database.

470 Since olanzapine has the potential to impair judgment, thinking, or motor skills, patients should be cautioned about operating  
471 hazardous machinery, including automobiles, until they are reasonably certain that olanzapine therapy does not affect them adversely  
472 [see Patient Counseling Information (17.8)].

#### 473 **5.13 Body Temperature Regulation**

474 Disruption of the body's ability to reduce core body temperature has been attributed to antipsychotic agents. Appropriate care  
475 is advised when prescribing olanzapine for patients who will be experiencing conditions which may contribute to an elevation in core  
476 body temperature, e.g., exercising strenuously, exposure to extreme heat, receiving concomitant medication with anticholinergic  
477 activity, or being subject to dehydration [see Patient Counseling Information (17.9)].

#### 478 **5.14 Use in Patients with Concomitant Illness**

479 Clinical experience with olanzapine in patients with certain concomitant systemic illnesses is limited [see Clinical  
480 Pharmacology (12.3)].

481 Olanzapine exhibits in vitro muscarinic receptor affinity. In premarketing clinical trials with olanzapine, olanzapine was  
482 associated with constipation, dry mouth, and tachycardia, all adverse reactions possibly related to cholinergic antagonism. Such  
483 adverse reactions were not often the basis for discontinuations from olanzapine, but olanzapine should be used with caution in patients  
484 with clinically significant prostatic hypertrophy, narrow angle glaucoma, or a history of paralytic ileus or related conditions.

485 In 5 placebo-controlled studies of olanzapine in elderly patients with dementia-related psychosis (n=1184), the following  
486 treatment-emergent adverse reactions were reported in olanzapine-treated patients at an incidence of at least 2% and significantly  
487 greater than placebo-treated patients: falls, somnolence, peripheral edema, abnormal gait, urinary incontinence, lethargy, increased  
488 weight, asthenia, pyrexia, pneumonia, dry mouth and visual hallucinations. The rate of discontinuation due to adverse reactions was  
489 greater with olanzapine than placebo (13% vs 7%). Elderly patients with dementia-related psychosis treated with olanzapine are at an  
490 increased risk of death compared to placebo. Olanzapine is not approved for the treatment of patients with dementia-related psychosis  
491 [see Boxed Warning, Warnings and Precautions (5.1), and Patient Counseling Information (17.2)].

492 Olanzapine has not been evaluated or used to any appreciable extent in patients with a recent history of myocardial infarction  
493 or unstable heart disease. Patients with these diagnoses were excluded from premarketing clinical studies. Because of the risk of  
494 orthostatic hypotension with olanzapine, caution should be observed in cardiac patients [see Warnings and Precautions (5.8)].

#### 495 **5.15 Hyperprolactinemia**

496 As with other drugs that antagonize dopamine D<sub>2</sub> receptors, olanzapine elevates prolactin levels, and the elevation persists  
497 during chronic administration. Hyperprolactinemia may suppress hypothalamic GnRH, resulting in reduced pituitary gonadotropin  
498 secretion. This, in turn, may inhibit reproductive function by impairing gonadal steroidogenesis in both female and male patients.  
499 Galactorrhea, amenorrhea, gynecomastia, and impotence have been reported in patients receiving prolactin-elevating compounds.  
500 Long-standing hyperprolactinemia when associated with hypogonadism may lead to decreased bone density in both female and male  
501 subjects.

502 Tissue culture experiments indicate that approximately one-third of human breast cancers are prolactin dependent in vitro, a  
503 factor of potential importance if the prescription of these drugs is contemplated in a patient with previously detected breast cancer. As  
504 is common with compounds which increase prolactin release, an increase in mammary gland neoplasia was observed in the olanzapine  
505 carcinogenicity studies conducted in mice and rats [see Nonclinical Toxicology (13.1)]. Neither clinical studies nor epidemiologic

studies conducted to date have shown an association between chronic administration of this class of drugs and tumorigenesis in humans; the available evidence is considered too limited to be conclusive at this time.

In placebo-controlled olanzapine clinical studies (up to 12 weeks), changes from normal to high in prolactin concentrations were observed in 30% of adults treated with olanzapine as compared to 10.5% of adults treated with placebo. In a pooled analysis from clinical studies including 8136 adults treated with olanzapine, potentially associated clinical manifestations included menstrual-related events<sup>1</sup> (2% [49/3240] of females), sexual function-related events<sup>2</sup> (2% [150/8136] of females and males), and breast-related events<sup>3</sup> (0.7% [23/3240] of females, 0.2% [9/4896] of males).

In placebo-controlled olanzapine monotherapy studies in adolescent patients (up to 6 weeks) with schizophrenia or bipolar I disorder (manic or mixed episodes), changes from normal to high in prolactin concentrations were observed in 47% of olanzapine-treated patients compared to 7% of placebo-treated patients. In a pooled analysis from clinical trials including 454 adolescents treated with olanzapine, potentially associated clinical manifestations included menstrual-related events<sup>1</sup> (1% [2/168] of females), sexual function-related events<sup>2</sup> (0.7% [3/454] of females and males), and breast-related events<sup>3</sup> (2% [3/168] of females, 2% [7/286] of males) [see *Use in Specific Populations* (8.4)].

<sup>1</sup> Based on a search of the following terms: amenorrhea, hypomenorrhea, menstruation delayed, and oligomenorrhea.

<sup>2</sup> Based on a search of the following terms: anorgasmia, delayed ejaculation, erectile dysfunction, decreased libido, loss of libido, abnormal orgasm, and sexual dysfunction.

<sup>3</sup> Based on a search of the following terms: breast discharge, enlargement or swelling, galactorrhea, gynecomastia, and lactation disorder.

### 5.16 Use in Combination with Fluoxetine, Lithium, or Valproate

When using ZYPREXA and fluoxetine in combination, the prescriber should also refer to the Warnings and Precautions section of the package insert for Symbyax. When using ZYPREXA in combination with lithium or valproate, the prescriber should refer to the Warnings and Precautions sections of the package inserts for lithium or valproate [see *Drug Interactions* (7)].

### 5.17 Laboratory Tests

Fasting blood glucose testing and lipid profile at the beginning of, and periodically during, treatment is recommended [see *Warnings and Precautions* (5.4, 5.5) and *Patient Counseling Information* (17.4, 17.5)].

## 6 ADVERSE REACTIONS

When using ZYPREXA and fluoxetine in combination, also refer to the Adverse Reactions section of the package insert for Symbyax.

### 6.1 Clinical Trials Experience

Because clinical trials are conducted under widely varying conditions, adverse reaction rates observed in the clinical trials of a drug cannot be directly compared to rates in the clinical trials of another drug and may not reflect or predict the rates observed in practice.

#### Clinical Trials in Adults

The information below for olanzapine is derived from a clinical trial database for olanzapine consisting of 8661 adult patients with approximately 4165 patient-years of exposure to oral olanzapine and 722 patients with exposure to intramuscular olanzapine for injection. This database includes: (1) 2500 patients who participated in multiple-dose oral olanzapine premarketing trials in schizophrenia and Alzheimer's disease representing approximately 1122 patient-years of exposure as of February 14, 1995; (2) 182 patients who participated in oral olanzapine premarketing bipolar I disorder (manic or mixed episodes) trials representing approximately 66 patient-years of exposure; (3) 191 patients who participated in an oral olanzapine trial of patients having various psychiatric symptoms in association with Alzheimer's disease representing approximately 29 patient-years of exposure; (4) 5788 patients from 88 additional oral olanzapine clinical trials as of December 31, 2001; and (5) 722 patients who participated in intramuscular olanzapine for injection premarketing trials in agitated patients with schizophrenia, bipolar I disorder (manic or mixed episodes), or dementia. In addition, information from the premarketing 6-week clinical study database for olanzapine in combination with lithium or valproate, consisting of 224 patients who participated in bipolar I disorder (manic or mixed episodes) trials with approximately 22 patient-years of exposure, is included below.

The conditions and duration of treatment with olanzapine varied greatly and included (in overlapping categories) open-label and double-blind phases of studies, inpatients and outpatients, fixed-dose and dose-titration studies, and short-term or longer-term exposure. Adverse reactions were assessed by collecting adverse reactions, results of physical examinations, vital signs, weights, laboratory analytes, ECGs, chest x-rays, and results of ophthalmologic examinations.

Certain portions of the discussion below relating to objective or numeric safety parameters, namely, dose-dependent adverse reactions, vital sign changes, weight gain, laboratory changes, and ECG changes are derived from studies in patients with schizophrenia and have not been duplicated for bipolar I disorder (manic or mixed episodes) or agitation. However, this information is also generally applicable to bipolar I disorder (manic or mixed episodes) and agitation.

Adverse reactions during exposure were obtained by spontaneous report and recorded by clinical investigators using terminology of their own choosing. Consequently, it is not possible to provide a meaningful estimate of the proportion of individuals experiencing adverse reactions without first grouping similar types of reactions into a smaller number of standardized reaction categories. In the tables and tabulations that follow, MedDRA and COSTART Dictionary terminology has been used to classify reported adverse reactions.

Reference ID: 2870829

The stated frequencies of adverse reactions represent the proportion of individuals who experienced, at least once, a treatment-emergent adverse reaction of the type listed. A reaction was considered treatment emergent if it occurred for the first time or worsened while receiving therapy following baseline evaluation. The reported reactions do not include those reaction terms that were so general as to be uninformative. Reactions listed elsewhere in labeling may not be repeated below. It is important to emphasize that, although the reactions occurred during treatment with olanzapine, they were not necessarily caused by it. The entire label should be read to gain a complete understanding of the safety profile of olanzapine.

The prescriber should be aware that the figures in the tables and tabulations cannot be used to predict the incidence of side effects in the course of usual medical practice where patient characteristics and other factors differ from those that prevailed in the clinical trials. Similarly, the cited frequencies cannot be compared with figures obtained from other clinical investigations involving different treatments, uses, and investigators. The cited figures, however, do provide the prescribing physician with some basis for estimating the relative contribution of drug and nondrug factors to the adverse reactions incidence in the population studied.

Incidence of Adverse Reactions in Short-Term, Placebo-Controlled and Combination Trials

The following findings are based on premarketing trials of (1) oral olanzapine for schizophrenia, bipolar I disorder (manic or mixed episodes), a subsequent trial of patients having various psychiatric symptoms in association with Alzheimer’s disease, and premarketing combination trials, and (2) intramuscular olanzapine for injection in agitated patients with schizophrenia or bipolar I mania.

*Adverse Reactions Associated with Discontinuation of Treatment in Short-Term, Placebo-Controlled Trials*

Schizophrenia — Overall, there was no difference in the incidence of discontinuation due to adverse reactions (5% for oral olanzapine vs 6% for placebo). However, discontinuations due to increases in ALT were considered to be drug related (2% for oral olanzapine vs 0% for placebo).

Bipolar I Disorder (Manic or Mixed Episodes) Monotherapy — Overall, there was no difference in the incidence of discontinuation due to adverse reactions (2% for oral olanzapine vs 2% for placebo).

Agitation — Overall, there was no difference in the incidence of discontinuation due to adverse reactions (0.4% for intramuscular olanzapine for injection vs 0% for placebo).

*Adverse Reactions Associated with Discontinuation of Treatment in Short-Term Combination Trials*

Bipolar I Disorder (Manic or Mixed Episodes), Olanzapine as Adjunct to Lithium or Valproate — In a study of patients who were already tolerating either lithium or valproate as monotherapy, discontinuation rates due to adverse reactions were 11% for the combination of oral olanzapine with lithium or valproate compared to 2% for patients who remained on lithium or valproate monotherapy. Discontinuations with the combination of oral olanzapine and lithium or valproate that occurred in more than 1 patient were: somnolence (3%), weight gain (1%), and peripheral edema (1%).

*Commonly Observed Adverse Reactions in Short-Term, Placebo-Controlled Trials*

The most commonly observed adverse reactions associated with the use of oral olanzapine (incidence of 5% or greater) and not observed at an equivalent incidence among placebo-treated patients (olanzapine incidence at least twice that for placebo) were:

**Table 9: Common Treatment-Emergent Adverse Reactions Associated with the Use of Oral Olanzapine in 6-Week Trials — SCHIZOPHRENIA**

Adverse Reaction	Percentage of Patients Reporting Event	
	Olanzapine (N=248)	Placebo (N=118)
Postural hypotension	5	2
Constipation	9	3
Weight gain	6	1
Dizziness	11	4
Personality disorder <sup>a</sup>	8	4
Akathisia	5	1

<sup>a</sup> Personality disorder is the COSTART term for designating nonaggressive objectionable behavior.

**Table 10: Common Treatment-Emergent Adverse Reactions Associated with the Use of Oral Olanzapine in 3-Week and 4-Week Trials — Bipolar I Disorder (Manic or Mixed Episodes)**

Adverse Reaction	Percentage of Patients Reporting Event	
	Olanzapine (N=125)	Placebo (N=129)
Asthenia	15	6
Dry mouth	22	7
Constipation	11	5
Dyspepsia	11	5
Increased appetite	6	3

Somnolence	35	13
Dizziness	18	6
Tremor	6	3

**Olanzapine Intramuscular** — There was 1 adverse reaction (somnolence) observed at an incidence of 5% or greater among intramuscular olanzapine for injection-treated patients and not observed at an equivalent incidence among placebo-treated patients (olanzapine incidence at least twice that for placebo) during the placebo-controlled premarketing studies. The incidence of somnolence during the 24 hour IM treatment period in clinical trials in agitated patients with schizophrenia or bipolar I mania was 6% for intramuscular olanzapine for injection and 3% for placebo.

*Adverse Reactions Occurring at an Incidence of 2% or More among Oral Olanzapine-Treated Patients in Short-Term, Placebo-Controlled Trials*

Table 11 enumerates the incidence, rounded to the nearest percent, of treatment-emergent adverse reactions that occurred in 2% or more of patients treated with oral olanzapine (doses  $\geq 2.5$  mg/day) and with incidence greater than placebo who participated in the acute phase of placebo-controlled trials.

**Table 11: Treatment-Emergent Adverse Reactions:  
Incidence in Short-Term, Placebo-Controlled Clinical Trials with Oral Olanzapine  
Percentage of Patients Reporting Event**

<b>Body System/Adverse Reaction</b>	<b>Olanzapine (N=532)</b>	<b>Placebo (N=294)</b>
<b>Body as a Whole</b>		
Accidental injury	12	8
Asthenia	10	9
Fever	6	2
Back pain	5	2
Chest pain	3	1
<b>Cardiovascular System</b>		
Postural hypotension	3	1
Tachycardia	3	1
Hypertension	2	1
<b>Digestive System</b>		
Dry mouth	9	5
Constipation	9	4
Dyspepsia	7	5
Vomiting	4	3
Increased appetite	3	2
<b>Hemic and Lymphatic System</b>		
Ecchymosis	5	3
<b>Metabolic and Nutritional Disorders</b>		
Weight gain	5	3
Peripheral edema	3	1
<b>Musculoskeletal System</b>		
Extremity pain (other than joint)	5	3
Joint pain	5	3
<b>Nervous System</b>		
Somnolence	29	13
Insomnia	12	11
Dizziness	11	4
Abnormal gait	6	1
Tremor	4	3
Akathisia	3	2
Hypertonia	3	2
Articulation impairment	2	1
<b>Respiratory System</b>		
Rhinitis	7	6
Cough increased	6	3
Pharyngitis	4	3
<b>Special Senses</b>		
Amblyopia	3	2

Urinary incontinence	2	1
Urinary tract infection	2	1

*Commonly Observed Adverse Reactions in Short-Term Trials of Oral Olanzapine as Adjunct to Lithium or Valproate*

In the bipolar I disorder (manic or mixed episodes) adjunct placebo-controlled trials, the most commonly observed adverse reactions associated with the combination of olanzapine and lithium or valproate (incidence of  $\geq 5\%$  and at least twice placebo) were:

**Table 12: Common Treatment-Emergent Adverse Reactions Associated with the Use of Oral Olanzapine in 6-Week Adjunct to Lithium or Valproate Trials — Bipolar I Disorder (Manic or Mixed Episodes)**  
**Percentage of Patients Reporting Event**

<b>Adverse Reaction</b>	<b>Olanzapine with lithium or valproate (N=229)</b>	<b>Placebo with lithium or valproate (N=115)</b>
Dry mouth	32	9
Weight gain	26	7
Increased appetite	24	8
Dizziness	14	7
Back pain	8	4
Constipation	8	4
Speech disorder	7	1
Increased salivation	6	2
Amnesia	5	2
Paresthesia	5	2

*Adverse Reactions Occurring at an Incidence of 2% or More among Oral Olanzapine-Treated Patients in Short-Term Trials of Olanzapine as Adjunct to Lithium or Valproate*

Table 13 enumerates the incidence, rounded to the nearest percent, of treatment-emergent adverse reactions that occurred in 2% or more of patients treated with the combination of olanzapine (doses  $\geq 5$  mg/day) and lithium or valproate and with incidence greater than lithium or valproate alone who participated in the acute phase of placebo-controlled combination trials.

**Table 13: Treatment-Emergent Adverse Reactions: Incidence in Short-Term, Placebo-Controlled Clinical Trials of Oral Olanzapine as Adjunct to Lithium or Valproate**  
**Percentage of Patients Reporting Event**

<b>Body System/Adverse Reaction</b>	<b>Olanzapine with lithium or valproate (N=229)</b>	<b>Placebo with lithium or valproate (N=115)</b>
<b>Body as a Whole</b>		
Asthenia	18	13
Back pain	8	4
Accidental injury	4	2
Chest pain	3	2
<b>Cardiovascular System</b>		
Hypertension	2	1
<b>Digestive System</b>		
Dry mouth	32	9
Increased appetite	24	8
Thirst	10	6
Constipation	8	4
Increased salivation	6	2
<b>Metabolic and Nutritional Disorders</b>		
Weight gain	26	7
Peripheral edema	6	4
Edema	2	1
<b>Nervous System</b>		
Somnolence	52	27
Tremor	23	13
Depression	18	17
Dizziness	14	7
Speech disorder	7	1
Amnesia	5	2
Paresthesia	5	2

Apathy	4	3
Confusion	4	1
Euphoria	3	2
Incoordination	2	0
<b>Respiratory System</b>		
Pharyngitis	4	1
Dyspnea	3	1
<b>Skin and Appendages</b>		
Sweating	3	1
Acne	2	0
Dry skin	2	0
<b>Special Senses</b>		
Amblyopia	9	5
Abnormal vision	2	0
<b>Urogenital System</b>		
Dysmenorrhea <sup>a</sup>	2	0
Vaginitis <sup>a</sup>	2	0

<sup>a</sup> Denominator used was for females only (olanzapine, N=128; placebo, N=51).

For specific information about the adverse reactions observed with lithium or valproate, refer to the Adverse Reactions section of the package inserts for these other products.

*Adverse Reactions Occurring at an Incidence of 1% or More among Intramuscular Olanzapine for Injection-Treated Patients in Short-Term, Placebo-Controlled Trials*

Table 14 enumerates the incidence, rounded to the nearest percent, of treatment-emergent adverse reactions that occurred in 1% or more of patients treated with intramuscular olanzapine for injection (dose range of 2.5-10 mg/injection) and with incidence greater than placebo who participated in the short-term, placebo-controlled trials in agitated patients with schizophrenia or bipolar I mania.

**Table 14: Treatment-Emergent Adverse Reactions: Incidence in Short-Term (24 Hour), Placebo-Controlled Clinical Trials with Intramuscular Olanzapine for Injection in Agitated Patients with Schizophrenia or Bipolar I Mania**

Body System/Adverse Reaction	Percentage of Patients Reporting Event	
	Olanzapine (N=415)	Placebo (N=150)
<b>Body as a Whole</b>		
Asthenia	2	1
<b>Cardiovascular System</b>		
Hypotension	2	0
Postural hypotension	1	0
<b>Nervous System</b>		
Somnolence	6	3
Dizziness	4	2
Tremor	1	0

**Additional Findings Observed in Clinical Trials**

Dose Dependency of Adverse Reactions in Short-Term, Placebo-Controlled Trials

*Extrapyramidal Symptoms:* The following table enumerates the percentage of patients with treatment-emergent extrapyramidal symptoms as assessed by categorical analyses of formal rating scales during acute therapy in a controlled clinical trial comparing oral olanzapine at 3 fixed doses with placebo in the treatment of schizophrenia in a 6-week trial.

**Table 15: Treatment-Emergent Extrapyramidal Symptoms Assessed by Rating Scales Incidence in a Fixed Dosage Range, Placebo-Controlled Clinical Trial of Oral Olanzapine in Schizophrenia — Acute Phase**

	Percentage of Patients Reporting Event			
	Placebo	Olanzapine 5 ± 2.5 mg/day	Olanzapine 10 ± 2.5 mg/day	Olanzapine 15 ± 2.5 mg/day
Parkinsonism <sup>a</sup>	15	14	12	14
Akathisia <sup>b</sup>	23	16	19	27

<sup>a</sup> Percentage of patients with a Simpson-Angus Scale total score >3.

<sup>b</sup> Percentage of patients with a Barnes Akathisia Scale global score ≥2.

The following table enumerates the percentage of patients with treatment-emergent extrapyramidal symptoms as assessed by spontaneously reported adverse reactions during acute therapy in the same controlled clinical trial comparing olanzapine at 3 fixed doses with placebo in the treatment of schizophrenia in a 6-week trial.

**Table 16: Treatment-Emergent Extrapyramidal Symptoms Assessed by Adverse Reactions Incidence in a Fixed Dosage Range, Placebo-Controlled Clinical Trial of Oral Olanzapine in Schizophrenia — Acute Phase**

	Percentage of Patients Reporting Event			
	Placebo (N=68)	Olanzapine 5 ± 2.5 mg/day (N=65)	Olanzapine 10 ± 2.5 mg/day (N=64)	Olanzapine 15 ± 2.5 mg/day (N=69)
Dystonic events <sup>a</sup>	1	3	2	3
Parkinsonism events <sup>b</sup>	10	8	14	20
Akathisia events <sup>c</sup>	1	5	11	10
Dyskinetic events <sup>d</sup>	4	0	2	1
Residual events <sup>e</sup>	1	2	5	1
Any extrapyramidal event	16	15	25	32

<sup>a</sup> Patients with the following COSTART terms were counted in this category: dystonia, generalized spasm, neck rigidity, oculogyric crisis, opisthotonos, torticollis.

<sup>b</sup> Patients with the following COSTART terms were counted in this category: akinesia, cogwheel rigidity, extrapyramidal syndrome, hypertonia, hypokinesia, masked facies, tremor.

<sup>c</sup> Patients with the following COSTART terms were counted in this category: akathisia, hyperkinesia.

<sup>d</sup> Patients with the following COSTART terms were counted in this category: buccoglossal syndrome, choreoathetosis, dyskinesia, tardive dyskinesia.

<sup>e</sup> Patients with the following COSTART terms were counted in this category: movement disorder, myoclonus, twitching.

The following table enumerates the percentage of adolescent patients with treatment-emergent extrapyramidal symptoms as assessed by spontaneously reported adverse reactions during acute therapy (dose range: 2.5 to 20 mg/day).

**Table 17: Treatment-Emergent Extrapyramidal Symptoms Assessed by Adverse Reactions Incidence in Placebo-Controlled Clinical Trials of Oral Olanzapine in Schizophrenia and Bipolar I Disorder — Adolescents**

Categories <sup>a</sup>	Percentage of Patients Reporting Event	
	Placebo (N=89)	Olanzapine (N=179)
Dystonic events	0	1
Parkinsonism events	2	1
Akathisia events	4	6
Dyskinetic events	0	1
Nonspecific events	0	4
Any extrapyramidal event	6	10

<sup>a</sup> Categories are based on Standard MedDRA Queries (SMQ) for extrapyramidal symptoms as defined in MedDRA version 12.0.

The following table enumerates the percentage of patients with treatment-emergent extrapyramidal symptoms as assessed by categorical analyses of formal rating scales during controlled clinical trials comparing fixed doses of intramuscular olanzapine for injection with placebo in agitation. Patients in each dose group could receive up to 3 injections during the trials [see *Clinical Studies (14.3)*]. Patient assessments were conducted during the 24 hours following the initial dose of intramuscular olanzapine for injection.

**Table 18: Treatment-Emergent Extrapyramidal Symptoms Assessed by Rating Scales Incidence in a Fixed Dose, Placebo-Controlled Clinical Trial of Intramuscular Olanzapine for Injection in Agitated Patients with Schizophrenia**

	Percentage of Patients Reporting Event				
	Placebo	Olanzapine IM 2.5 mg	Olanzapine IM 5 mg	Olanzapine IM 7.5 mg	Olanzapine IM 10 mg
Parkinsonism <sup>a</sup>	0	0	0	0	3
Akathisia <sup>b</sup>	0	0	5	0	0

<sup>a</sup> Percentage of patients with a Simpson-Angus Scale total score >3.

<sup>b</sup> Percentage of patients with a Barnes Akathisia Scale global score ≥2.

The following table enumerates the percentage of patients with treatment-emergent extrapyramidal symptoms as assessed by spontaneously reported adverse reactions in the same controlled clinical trial comparing fixed doses of intramuscular olanzapine for injection with placebo in agitated patients with schizophrenia.

**Table 19: Treatment-Emergent Extrapyramidal Symptoms Assessed by Adverse Reactions Incidence in a Fixed Dose, Placebo-Controlled Clinical Trial of Intramuscular Olanzapine for Injection in Agitated Patients with Schizophrenia**

	Percentage of Patients Reporting Event				
	Placebo (N=45)	Olanzapine IM 2.5 mg (N=48)	Olanzapine IM 5 mg (N=45)	Olanzapine IM 7.5 mg (N=46)	Olanzapine IM 10 mg (N=46)
Dystonic events <sup>a</sup>	0	0	0	0	0
Parkinsonism events <sup>b</sup>	0	4	2	0	0
Akathisia events <sup>c</sup>	0	2	0	0	0
Dyskinetic events <sup>d</sup>	0	0	0	0	0
Residual events <sup>e</sup>	0	0	0	0	0
Any extrapyramidal events	0	4	2	0	0

<sup>a</sup> Patients with the following COSTART terms were counted in this category: dystonia, generalized spasm, neck rigidity, oculogyric crisis, opisthotonos, torticollis.

<sup>b</sup> Patients with the following COSTART terms were counted in this category: akinesia, cogwheel rigidity, extrapyramidal syndrome, hypertonia, hypokinesia, masked facies, tremor.

<sup>c</sup> Patients with the following COSTART terms were counted in this category: akathisia, hyperkinesia.

<sup>d</sup> Patients with the following COSTART terms were counted in this category: buccoglossal syndrome, choreoathetosis, dyskinesia, tardive dyskinesia.

<sup>e</sup> Patients with the following COSTART terms were counted in this category: movement disorder, myoclonus, twitching.

*Dystonia, Class Effect:* Symptoms of dystonia, prolonged abnormal contractions of muscle groups, may occur in susceptible individuals during the first few days of treatment. Dystonic symptoms include: spasm of the neck muscles, sometimes progressing to tightness of the throat, swallowing difficulty, difficulty breathing, and/or protrusion of the tongue. While these symptoms can occur at low doses, the frequency and severity are greater with high potency and at higher doses of first generation antipsychotic drugs. In general, an elevated risk of acute dystonia may be observed in males and younger age groups receiving antipsychotics; however, events of dystonia have been reported infrequently (<1%) with olanzapine use.

*Other Adverse Reactions:* The following table addresses dose relatedness for other adverse reactions using data from a schizophrenia trial involving fixed dosage ranges of oral olanzapine. It enumerates the percentage of patients with treatment-emergent adverse reactions for the 3 fixed-dose range groups and placebo. The data were analyzed using the Cochran-Armitage test, excluding the placebo group, and the table includes only those adverse reactions for which there was a trend.

**Table 20: Percentage of Patients from a Schizophrenia Trial with Treatment-Emergent Adverse Reactions for the 3 Dose Range Groups and Placebo**

Adverse Reaction	Percentage of Patients Reporting Event			
	Placebo (N=68)	Olanzapine 5 ± 2.5 mg/day (N=65)	Olanzapine 10 ± 2.5 mg/day (N=64)	Olanzapine 15 ± 2.5 mg/day (N=69)
Asthenia	15	8	9	20
Dry mouth	4	3	5	13
Nausea	9	0	2	9
Somnolence	16	20	30	39
Tremor	3	0	5	7

Differences among Fixed-Dose Groups Observed in Other Olanzapine Clinical Trials

In a single 8-week randomized, double-blind, fixed-dose study comparing 10 (N=199), 20 (N=200) and 40 (N=200) mg/day of oral olanzapine in patients with schizophrenia or schizoaffective disorder, differences among 3 dose groups were observed for the following safety outcomes: weight gain, prolactin elevation, fatigue and dizziness. Mean baseline to endpoint increase in weight (10 mg/day: 1.9 kg; 20 mg/day: 2.3 kg; 40 mg/day: 3 kg) was observed with significant differences between 10 vs 40 mg/day. Incidence of treatment-emergent prolactin elevation >24.2 ng/mL (female) or >18.77 ng/mL (male) at any time during the trial (10 mg/day: 31.2%; 20 mg/day: 42.7%; 40 mg/day: 61.1%) with significant differences between 10 vs 40 mg/day and 20 vs 40 mg/day; fatigue (10 mg/day: 1.5%; 20 mg/day: 2.1%; 40 mg/day: 6.6%) with significant differences between 10 vs 40 and 20 vs 40 mg/day; and dizziness (10 mg/day: 2.6%; 20 mg/day: 1.6%; 40 mg/day: 6.6%) with significant differences between 20 vs 40 mg, was observed.

**Other Adverse Reactions Observed During the Clinical Trial Evaluation of Oral Olanzapine**

Following is a list of treatment-emergent adverse reactions reported by patients treated with oral olanzapine (at multiple doses  $\geq 1$  mg/day) in clinical trials. This listing is not intended to include reactions (1) already listed in previous tables or elsewhere in labeling, (2) for which a drug cause was remote, (3) which were so general as to be uninformative, (4) which were not considered to have significant clinical implications, or (5) which occurred at a rate equal to or less than placebo. Reactions are classified by body system using the following definitions: frequent adverse reactions are those occurring in at least 1/100 patients; infrequent adverse reactions are those occurring in 1/100 to 1/1000 patients; rare reactions are those occurring in fewer than 1/1000 patients.

**Body as a Whole** — *Infrequent*: chills, face edema, photosensitivity reaction, suicide attempt<sup>1</sup>; *Rare*: chills and fever, hangover effect, sudden death<sup>1</sup>.

**Cardiovascular System** — *Infrequent*: cerebrovascular accident, vasodilatation.

**Digestive System** — *Infrequent*: nausea and vomiting, tongue edema; *Rare*: ileus, intestinal obstruction, liver fatty deposit.

**Hemic and Lymphatic System** — *Infrequent*: leukopenia, thrombocytopenia.

**Metabolic and Nutritional Disorders** — *Infrequent*: alkaline phosphatase increased, bilirubinemia, hypoproteinemia.

**Musculoskeletal System** — *Rare*: osteoporosis.

**Nervous System** — *Infrequent*: ataxia, dysarthria, libido decreased, stupor; *Rare*: coma.

**Respiratory System** — *Infrequent*: epistaxis; *Rare*: lung edema.

**Skin and Appendages** — *Infrequent*: alopecia.

**Special Senses** — *Infrequent*: abnormality of accommodation, dry eyes; *Rare*: mydriasis.

**Urogenital System** — *Infrequent*: amenorrhea<sup>2</sup>, breast pain, decreased menstruation, impotence<sup>2</sup>, increased menstruation<sup>2</sup>, menorrhagia<sup>2</sup>, metrorrhagia<sup>2</sup>, polyuria<sup>2</sup>, urinary frequency, urinary retention, urinary urgency, urination impaired.

<sup>1</sup> These terms represent serious adverse events but do not meet the definition for adverse drug reactions. They are included here because of their seriousness.

<sup>2</sup> Adjusted for gender.

**Other Adverse Reactions Observed During the Clinical Trial Evaluation of Intramuscular Olanzapine for Injection**

Following is a list of treatment-emergent adverse reactions reported by patients treated with intramuscular olanzapine for injection (at 1 or more doses  $\geq 2.5$  mg/injection) in clinical trials. This listing is not intended to include reactions (1) already listed in previous tables or elsewhere in labeling, (2) for which a drug cause was remote, (3) which were so general as to be uninformative, (4) which were not considered to have significant clinical implications, or (5) for which occurred at a rate equal to or less than placebo. Reactions are classified by body system using the following definitions: frequent adverse reactions are those occurring in at least 1/100 patients; infrequent adverse reactions are those occurring in 1/100 to 1/1000 patients.

**Body as a Whole** — *Frequent*: injection site pain.

**Cardiovascular System** — *Infrequent*: syncope.

**Digestive System** — *Infrequent*: nausea.

**Metabolic and Nutritional Disorders** — *Infrequent*: creatine phosphokinase increased.

**Clinical Trials in Adolescent Patients (age 13 to 17 years)**

*Commonly Observed Adverse Reactions in Oral Olanzapine Short-Term, Placebo-Controlled Trials*

Adverse reactions in adolescent patients treated with oral olanzapine (doses  $\geq 2.5$  mg) reported with an incidence of 5% or more and reported at least twice as frequently as placebo-treated patients are listed in Table 21.

**Table 21: Treatment-Emergent Adverse Reactions of  $\geq 5\%$  Incidence among Adolescents (13-17 Years Old) with Schizophrenia or Bipolar I Disorder (Manic or Mixed Episodes)**

Adverse Reactions	Percentage of Patients Reporting Event			
	6 Week Trial % Schizophrenia Patients		3 Week Trial % Bipolar Patients	
	Olanzapine (N=72)	Placebo (N=35)	Olanzapine (N=107)	Placebo (N=54)
Sedation <sup>a</sup>	39	9	48	9
Weight increased	31	9	29	4
Headache	17	6	17	17
Increased appetite	17	9	29	4
Dizziness	8	3	7	2
Abdominal pain <sup>b</sup>	6	3	6	7
Pain in extremity	6	3	5	0
Fatigue	3	3	14	6
Dry mouth	4	0	7	0

<sup>a</sup> Patients with the following MedDRA terms were counted in this category: hypersomnia, lethargy, sedation, somnolence.

<sup>b</sup> Patients with the following MedDRA terms were counted in this category: abdominal pain, abdominal pain lower, abdominal pain upper.

784 *Adverse Reactions Occurring at an Incidence of 2% or More among Oral Olanzapine-Treated Patients in Short-Term (3-6*  
785 *weeks), Placebo-Controlled Trials*

786  
787 Adverse reactions in adolescent patients treated with oral olanzapine (doses  $\geq 2.5$  mg) reported with an incidence of 2% or  
788 more and greater than placebo are listed in Table 22.

790 **Table 22: Treatment-Emergent Adverse Reactions of  $\geq 2\%$  Incidence among Adolescents (13-17 Years Old)**  
791 **(Combined Incidence from Short-Term, Placebo-Controlled Clinical Trials of Schizophrenia**  
792 **or Bipolar I Disorder [Manic or Mixed Episodes])**

Percentage of Patients Reporting Event

Adverse Reaction	Olanzapine (N=179)	Placebo (N=89)
Sedation <sup>a</sup>	44	9
Weight increased	30	6
Increased appetite	24	6
Headache	17	12
Fatigue	9	4
Dizziness	7	2
Dry mouth	6	0
Pain in extremity	5	1
Constipation	4	0
Nasopharyngitis	4	2
Diarrhea	3	0
Restlessness	3	2
Liver enzymes increased <sup>b</sup>	8	1
Dyspepsia	3	1
Epistaxis	3	0
Respiratory tract infection <sup>c</sup>	3	2
Sinusitis	3	0
Arthralgia	2	0
Musculoskeletal stiffness	2	0

793 <sup>a</sup> Patients with the following MedDRA terms were counted in this category: hypersomnia, lethargy, sedation, somnolence.

794 <sup>b</sup> The terms alanine aminotransferase (ALT), aspartate aminotransferase (AST), and hepatic enzyme were combined under liver  
795 enzymes.

796 <sup>c</sup> Patients with the following MedDRA terms were counted in this category: lower respiratory tract infection, respiratory tract  
797 infection, respiratory tract infection viral, upper respiratory tract infection, viral upper respiratory tract infection.

799 **6.2 Vital Signs and Laboratory Studies**

800 Vital Sign Changes — Oral olanzapine was associated with orthostatic hypotension and tachycardia in clinical trials.  
801 Intramuscular olanzapine for injection was associated with bradycardia, hypotension, and tachycardia in clinical trials [*see Warnings*  
802 *and Precautions (5)*].

803 Laboratory Changes

804 *Olanzapine Monotherapy in Adults:* An assessment of the premarketing experience for olanzapine revealed an association  
805 with asymptomatic increases in ALT, AST, and GGT. Within the original premarketing database of about 2400 adult patients with  
806 baseline ALT  $\leq 90$  IU/L, the incidence of ALT elevations to  $>200$  IU/L was 2% (50/2381). None of these patients experienced  
807 jaundice or other symptoms attributable to liver impairment and most had transient changes that tended to normalize while olanzapine  
808 treatment was continued.

809 In placebo-controlled olanzapine monotherapy studies in adults, clinically significant ALT elevations (change from  $<3$  times  
810 the upper limit of normal [ULN] at baseline to  $\geq 3$  times ULN) were observed in 5% (77/1426) of patients exposed to olanzapine  
811 compared to 1% (10/1187) of patients exposed to placebo. ALT elevations  $\geq 5$  times ULN were observed in 2% (29/1438) of  
812 olanzapine-treated patients, compared to 0.3% (4/1196) of placebo-treated patients. ALT values returned to normal, or were  
813 decreasing, at last follow-up in the majority of patients who either continued treatment with olanzapine or discontinued olanzapine. No  
814 patient with elevated ALT values experienced jaundice, liver failure, or met the criteria for Hy's Rule.

815 Rare postmarketing reports of hepatitis have been received. Very rare cases of cholestatic or mixed liver injury have also been  
816 reported in the postmarketing period.

817 Caution should be exercised in patients with signs and symptoms of hepatic impairment, in patients with pre-existing  
818 conditions associated with limited hepatic functional reserve, and in patients who are being treated with potentially hepatotoxic drugs.

819 Olanzapine administration was also associated with increases in serum prolactin [*see Warnings and Precautions (5.15)*], with  
820 an asymptomatic elevation of the eosinophil count in 0.3% of patients, and with an increase in CPK.

*Olanzapine Monotherapy in Adolescents:* In placebo-controlled clinical trials of adolescent patients with schizophrenia or bipolar I disorder (manic or mixed episodes), greater frequencies for the following treatment-emergent findings, at anytime, were observed in laboratory analytes compared to placebo: elevated ALT ( $\geq 3X$  ULN in patients with ALT at baseline  $< 3X$  ULN), (12% vs 2%); elevated AST (28% vs 4%); low total bilirubin (22% vs 7%); elevated GGT (10% vs 1%); and elevated prolactin (47% vs 7%).

In placebo-controlled olanzapine monotherapy studies in adolescents, clinically significant ALT elevations (change from  $< 3$  times ULN at baseline to  $\geq 3$  times ULN) were observed in 12% (22/192) of patients exposed to olanzapine compared to 2% (2/109) of patients exposed to placebo. ALT elevations  $\geq 5$  times ULN were observed in 4% (8/192) of olanzapine-treated patients, compared to 1% (1/109) of placebo-treated patients. ALT values returned to normal, or were decreasing, at last follow-up in the majority of patients who either continued treatment with olanzapine or discontinued olanzapine. No adolescent patient with elevated ALT values experienced jaundice, liver failure, or met the criteria for Hy's Rule.

**ECG Changes** — In pooled studies of adults as well as pooled studies of adolescents, there were no significant differences between olanzapine and placebo in the proportions of patients experiencing potentially important changes in ECG parameters, including QT, QTc (Fridericia corrected), and PR intervals. Olanzapine use was associated with a mean increase in heart rate compared to placebo (adults: +2.4 beats per minute vs no change with placebo; adolescents: +6.3 beats per minute vs -5.1 beats per minute with placebo). This increase in heart rate may be related to olanzapine's potential for inducing orthostatic changes [see *Warnings and Precautions (5.8)*].

### 6.3 Postmarketing Experience

The following adverse reactions have been identified during post-approval use of ZYPREXA. Because these reactions are reported voluntarily from a population of uncertain size, it is difficult to reliably estimate their frequency or evaluate a causal relationship to drug exposure.

Adverse reactions reported since market introduction that were temporally (but not necessarily causally) related to ZYPREXA therapy include the following: allergic reaction (e.g., anaphylactoid reaction, angioedema, pruritus or urticaria), diabetic coma, diabetic ketoacidosis, discontinuation reaction (diaphoresis, nausea or vomiting), jaundice, neutropenia, pancreatitis, priapism, rash, rhabdomyolysis, and venous thromboembolic events (including pulmonary embolism and deep venous thrombosis). Random cholesterol levels of  $\geq 240$  mg/dL and random triglyceride levels of  $\geq 1000$  mg/dL have been reported.

## 7 DRUG INTERACTIONS

The risks of using olanzapine in combination with other drugs have not been extensively evaluated in systematic studies.

### 7.1 Potential for Other Drugs to Affect Olanzapine

**Diazepam** — The co-administration of diazepam with olanzapine potentiated the orthostatic hypotension observed with olanzapine [see *Drug Interactions (7.2)*].

**Cimetidine and Antacids** — Single doses of cimetidine (800 mg) or aluminum- and magnesium-containing antacids did not affect the oral bioavailability of olanzapine.

**Inducers of CYP1A2** — Carbamazepine therapy (200 mg bid) causes an approximately 50% increase in the clearance of olanzapine. This increase is likely due to the fact that carbamazepine is a potent inducer of CYP1A2 activity. Higher daily doses of carbamazepine may cause an even greater increase in olanzapine clearance.

**Alcohol** — Ethanol (45 mg/70 kg single dose) did not have an effect on olanzapine pharmacokinetics. The co-administration of alcohol (i.e., ethanol) with olanzapine potentiated the orthostatic hypotension observed with olanzapine [see *Drug Interactions (7.2)*].

#### **Inhibitors of CYP1A2**

**Fluvoxamine:** Fluvoxamine, a CYP1A2 inhibitor, decreases the clearance of olanzapine. This results in a mean increase in olanzapine C<sub>max</sub> following fluvoxamine of 54% in female nonsmokers and 77% in male smokers. The mean increase in olanzapine AUC is 52% and 108%, respectively. Lower doses of olanzapine should be considered in patients receiving concomitant treatment with fluvoxamine.

#### **Inhibitors of CYP2D6**

**Fluoxetine:** Fluoxetine (60 mg single dose or 60 mg daily dose for 8 days) causes a small (mean 16%) increase in the maximum concentration of olanzapine and a small (mean 16%) decrease in olanzapine clearance. The magnitude of the impact of this factor is small in comparison to the overall variability between individuals, and therefore dose modification is not routinely recommended. When using ZYPREXA and fluoxetine in combination, also refer to the Drug Interactions section of the package insert for Symbyax.

**Warfarin** — Warfarin (20 mg single dose) did not affect olanzapine pharmacokinetics [see *Drug Interactions (7.2)*].

**Inducers of CYP1A2 or Glucuronyl Transferase** — Omeprazole and rifampin may cause an increase in olanzapine clearance.

**Charcoal** — The administration of activated charcoal (1 g) reduced the C<sub>max</sub> and AUC of oral olanzapine by about 60%. As peak olanzapine levels are not typically obtained until about 6 hours after dosing, charcoal may be a useful treatment for olanzapine overdose.

### 7.2 Potential for Olanzapine to Affect Other Drugs

**CNS Acting Drugs** — Given the primary CNS effects of olanzapine, caution should be used when olanzapine is taken in combination with other centrally acting drugs and alcohol.

**Antihypertensive Agents** — Olanzapine, because of its potential for inducing hypotension, may enhance the effects of certain antihypertensive agents.

Levodopa and Dopamine Agonists — Olanzapine may antagonize the effects of levodopa and dopamine agonists.  
Lorazepam (IM) — Administration of intramuscular lorazepam (2 mg) 1 hour after intramuscular olanzapine for injection (5 mg) did not significantly affect the pharmacokinetics of olanzapine, unconjugated lorazepam, or total lorazepam. However, this co-administration of intramuscular lorazepam and intramuscular olanzapine for injection added to the somnolence observed with either drug alone [see *Warnings and Precautions* (5.8)].

Lithium — Multiple doses of olanzapine (10 mg for 8 days) did not influence the kinetics of lithium. Therefore, concomitant olanzapine administration does not require dosage adjustment of lithium [see *Warnings and Precautions* (5.16)].

Valproate — Olanzapine (10 mg daily for 2 weeks) did not affect the steady state plasma concentrations of valproate. Therefore, concomitant olanzapine administration does not require dosage adjustment of valproate [see *Warnings and Precautions* (5.16)].

Effect of Olanzapine on Drug Metabolizing Enzymes — In vitro studies utilizing human liver microsomes suggest that olanzapine has little potential to inhibit CYP1A2, CYP2C9, CYP2C19, CYP2D6, and CYP3A. Thus, olanzapine is unlikely to cause clinically important drug interactions mediated by these enzymes.

Imipramine — Single doses of olanzapine did not affect the pharmacokinetics of imipramine or its active metabolite desipramine.

Warfarin — Single doses of olanzapine did not affect the pharmacokinetics of warfarin [see *Drug Interactions* (7.1)].

Diazepam — Olanzapine did not influence the pharmacokinetics of diazepam or its active metabolite N-desmethyldiazepam. However, diazepam co-administered with olanzapine increased the orthostatic hypotension observed with either drug given alone [see *Drug Interactions* (7.1)].

Alcohol — Multiple doses of olanzapine did not influence the kinetics of ethanol [see *Drug Interactions* (7.1)].

Biperiden — Multiple doses of olanzapine did not influence the kinetics of biperiden.

Theophylline — Multiple doses of olanzapine did not affect the pharmacokinetics of theophylline or its metabolites.

## 8 USE IN SPECIFIC POPULATIONS

When using ZYPREXA and fluoxetine in combination, also refer to the Use in Specific Populations section of the package insert for Symbyax.

### 8.1 Pregnancy

Teratogenic Effects, Pregnancy Category C — In oral reproduction studies in rats at doses up to 18 mg/kg/day and in rabbits at doses up to 30 mg/kg/day (9 and 30 times the maximum recommended human daily oral dose on a mg/m<sup>2</sup> basis, respectively) no evidence of teratogenicity was observed. In an oral rat teratology study, early resorptions and increased numbers of nonviable fetuses were observed at a dose of 18 mg/kg/day (9 times the maximum recommended human daily oral dose on a mg/m<sup>2</sup> basis). Gestation was prolonged at 10 mg/kg/day (5 times the maximum recommended human daily oral dose on a mg/m<sup>2</sup> basis). In an oral rabbit teratology study, fetal toxicity (manifested as increased resorptions and decreased fetal weight) occurred at a maternally toxic dose of 30 mg/kg/day (30 times the maximum recommended human daily oral dose on a mg/m<sup>2</sup> basis). Because animal reproduction studies are not always predictive of human response, this drug should be used during pregnancy only if the potential benefit justifies the potential risk to the fetus.

Placental transfer of olanzapine occurs in rat pups.

There are no adequate and well-controlled trials with olanzapine in pregnant females. Seven pregnancies were observed during clinical trials with olanzapine, including 2 resulting in normal births, 1 resulting in neonatal death due to a cardiovascular defect, 3 therapeutic abortions, and 1 spontaneous abortion.

Non-Teratogenic Effects - Neonates exposed to antipsychotic drugs (including ZYPREXA), during the third trimester of pregnancy are at risk for extrapyramidal and/or withdrawal symptoms following delivery. There have been reports of agitation, hypertonia, hypotonia, tremor, somnolence, respiratory distress and feeding disorder in these neonates. These complications have varied in severity; while in some cases symptoms have been self-limited, in other cases neonates have required intensive care unit support and prolonged hospitalization.

ZYPREXA should be used during pregnancy only if the potential benefit justifies the potential risk to the fetus.

### 8.2 Labor and Delivery

The effect of olanzapine on labor and delivery in humans is unknown. Parturition in rats was not affected by olanzapine.

### 8.3 Nursing Mothers

In a study in lactating, healthy women, olanzapine was excreted in breast milk. Mean infant dose at steady state was estimated to be 1.8% of the maternal olanzapine dose. It is recommended that women receiving olanzapine should not breast-feed.

### 8.4 Pediatric Use

The safety and effectiveness of oral ZYPREXA in the treatment of schizophrenia and manic or mixed episodes associated with bipolar I disorder were established in short-term studies in adolescents (ages 13 to 17 years). Use of ZYPREXA in adolescents is supported by evidence from adequate and well-controlled studies of ZYPREXA in which 268 adolescents received ZYPREXA in a range of 2.5 to 20 mg/day [see *Clinical Studies* (14.1, 14.2)]. Recommended starting dose for adolescents is lower than that for adults [see *Dosage and Administration* (2.1, 2.2)]. Compared to patients from adult clinical trials, adolescents were likely to gain more weight, experience increased sedation, and have greater increases in total cholesterol, triglycerides, LDL cholesterol, prolactin and hepatic transaminase levels [see *Warnings and Precautions* (5.5, 5.6, 5.15, 5.17) and *Adverse Reactions* (6.2)]. When deciding among the alternative treatments available for adolescents, clinicians should consider the increased potential (in adolescents as compared with

adults) for weight gain and hyperlipidemia. Clinicians should consider the potential long-term risks when prescribing to adolescents, and in many cases this may lead them to consider prescribing other drugs first in adolescents [see *Indications and Usage (1.1, 1.2)*].

Safety and effectiveness of olanzapine in children <13 years of age have not been established [see *Patient Counseling Information (17.13)*].

Safety and effectiveness of ZYPREXA and fluoxetine in combination in children and adolescents <18 years of age have not been established.

### 8.5 Geriatric Use

Of the 2500 patients in premarketing clinical studies with oral olanzapine, 11% (263) were 65 years of age or over. In patients with schizophrenia, there was no indication of any different tolerability of olanzapine in the elderly compared to younger patients. Studies in elderly patients with dementia-related psychosis have suggested that there may be a different tolerability profile in this population compared to younger patients with schizophrenia. Elderly patients with dementia-related psychosis treated with olanzapine are at an increased risk of death compared to placebo. In placebo-controlled studies of olanzapine in elderly patients with dementia-related psychosis, there was a higher incidence of cerebrovascular adverse events (e.g., stroke, transient ischemic attack) in patients treated with olanzapine compared to patients treated with placebo. Olanzapine is not approved for the treatment of patients with dementia-related psychosis. Also, the presence of factors that might decrease pharmacokinetic clearance or increase the pharmacodynamic response to olanzapine should lead to consideration of a lower starting dose for any geriatric patient [see *Boxed Warning, Dosage and Administration (2.1), and Warnings and Precautions (5.1)*].

Clinical studies of ZYPREXA and fluoxetine in combination did not include sufficient numbers of patients ≥65 years of age to determine whether they respond differently from younger patients.

## 9 DRUG ABUSE AND DEPENDENCE

### 9.3 Dependence

In studies prospectively designed to assess abuse and dependence potential, olanzapine was shown to have acute depressive CNS effects but little or no potential of abuse or physical dependence in rats administered oral doses up to 15 times the maximum recommended human daily oral dose (20 mg) and rhesus monkeys administered oral doses up to 8 times the maximum recommended human daily oral dose on a mg/m<sup>2</sup> basis.

Olanzapine has not been systematically studied in humans for its potential for abuse, tolerance, or physical dependence. While the clinical trials did not reveal any tendency for any drug-seeking behavior, these observations were not systematic, and it is not possible to predict on the basis of this limited experience the extent to which a CNS-active drug will be misused, diverted, and/or abused once marketed. Consequently, patients should be evaluated carefully for a history of drug abuse, and such patients should be observed closely for signs of misuse or abuse of olanzapine (e.g., development of tolerance, increases in dose, drug-seeking behavior).

## 10 OVERDOSAGE

### 10.1 Human Experience

In premarketing trials involving more than 3100 patients and/or normal subjects, accidental or intentional acute overdose of olanzapine was identified in 67 patients. In the patient taking the largest identified amount, 300 mg, the only symptoms reported were drowsiness and slurred speech. In the limited number of patients who were evaluated in hospitals, including the patient taking 300 mg, there were no observations indicating an adverse change in laboratory analytes or ECG. Vital signs were usually within normal limits following overdoses.

In postmarketing reports of overdose with olanzapine alone, symptoms have been reported in the majority of cases. In symptomatic patients, symptoms with ≥10% incidence included agitation/aggressiveness, dysarthria, tachycardia, various extrapyramidal symptoms, and reduced level of consciousness ranging from sedation to coma. Among less commonly reported symptoms were the following potentially medically serious reactions: aspiration, cardiopulmonary arrest, cardiac arrhythmias (such as supraventricular tachycardia and 1 patient experiencing sinus pause with spontaneous resumption of normal rhythm), delirium, possible neuroleptic malignant syndrome, respiratory depression/arrest, convulsion, hypertension, and hypotension. Eli Lilly and Company has received reports of fatality in association with overdose of olanzapine alone. In 1 case of death, the amount of acutely ingested olanzapine was reported to be possibly as low as 450 mg of oral olanzapine; however, in another case, a patient was reported to survive an acute olanzapine ingestion of approximately 2 g of oral olanzapine.

### 10.2 Management of Overdose

The possibility of multiple drug involvement should be considered. In case of acute overdose, establish and maintain an airway and ensure adequate oxygenation and ventilation, which may include intubation. Gastric lavage (after intubation, if patient is unconscious) and administration of activated charcoal together with a laxative should be considered. The administration of activated charcoal (1 g) reduced the C<sub>max</sub> and AUC of oral olanzapine by about 60%. As peak olanzapine levels are not typically obtained until about 6 hours after dosing, charcoal may be a useful treatment for olanzapine overdose.

The possibility of obtundation, seizures, or dystonic reaction of the head and neck following overdose may create a risk of aspiration with induced emesis. Cardiovascular monitoring should commence immediately and should include continuous electrocardiographic monitoring to detect possible arrhythmias.

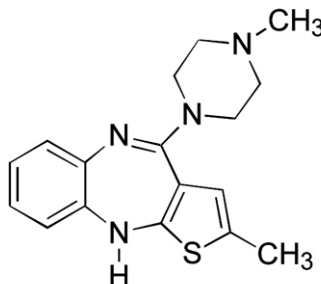
There is no specific antidote to olanzapine. Therefore, appropriate supportive measures should be initiated. Hypotension and circulatory collapse should be treated with appropriate measures such as intravenous fluids and/or sympathomimetic agents. (Do not use epinephrine, dopamine, or other sympathomimetics with beta-agonist activity, since beta stimulation may worsen hypotension in

the setting of olanzapine-induced alpha blockade.) Close medical supervision and monitoring should continue until the patient recovers.

For specific information about overdosage with lithium or valproate, refer to the Overdosage section of the package inserts for these products. For specific information about overdosage with olanzapine and fluoxetine in combination, refer to the Overdosage section of the Symbyax package insert.

## 11 DESCRIPTION

ZYPREXA (olanzapine) is an atypical antipsychotic that belongs to the thienobenzodiazepine class. The chemical designation is 2-methyl-4-(4-methyl-1-piperazinyl)-10H-thieno[2,3-b] [1,5]benzodiazepine. The molecular formula is  $C_{17}H_{20}N_4S$ , which corresponds to a molecular weight of 312.44. The chemical structure is:



Olanzapine is a yellow crystalline solid, which is practically insoluble in water.

ZYPREXA tablets are intended for oral administration only.

Each tablet contains olanzapine equivalent to 2.5 mg (8  $\mu$ mol), 5 mg (16  $\mu$ mol), 7.5 mg (24  $\mu$ mol), 10 mg (32  $\mu$ mol), 15 mg (48  $\mu$ mol), or 20 mg (64  $\mu$ mol). Inactive ingredients are carnauba wax, crospovidone, hydroxypropyl cellulose, hypromellose, lactose, magnesium stearate, microcrystalline cellulose, and other inactive ingredients. The color coating contains Titanium Dioxide (all strengths), FD&C Blue No. 2 Aluminum Lake (15 mg), or Synthetic Red Iron Oxide (20 mg). The 2.5, 5, 7.5, and 10 mg tablets are imprinted with edible ink which contains FD&C Blue No. 2 Aluminum Lake.

ZYPREXA ZYDIS (olanzapine orally disintegrating tablets) is intended for oral administration only.

Each orally disintegrating tablet contains olanzapine equivalent to 5 mg (16  $\mu$ mol), 10 mg (32  $\mu$ mol), 15 mg (48  $\mu$ mol) or 20 mg (64  $\mu$ mol). It begins disintegrating in the mouth within seconds, allowing its contents to be subsequently swallowed with or without liquid. ZYPREXA ZYDIS (olanzapine orally disintegrating tablets) also contains the following inactive ingredients: gelatin, mannitol, aspartame, sodium methyl paraben, and sodium propyl paraben.

ZYPREXA IntraMuscular (olanzapine for injection) is intended for intramuscular use only.

Each vial provides for the administration of 10 mg (32  $\mu$ mol) olanzapine with inactive ingredients 50 mg lactose monohydrate and 3.5 mg tartaric acid. Hydrochloric acid and/or sodium hydroxide may have been added during manufacturing to adjust pH.

## 12 CLINICAL PHARMACOLOGY

### 12.1 Mechanism of Action

The mechanism of action of olanzapine, as with other drugs having efficacy in schizophrenia, is unknown. However, it has been proposed that this drug's efficacy in schizophrenia is mediated through a combination of dopamine and serotonin type 2 (5HT<sub>2</sub>) antagonism. The mechanism of action of olanzapine in the treatment of acute manic or mixed episodes associated with bipolar I disorder is unknown.

### 12.2 Pharmacodynamics

Olanzapine binds with high affinity to the following receptors: serotonin 5HT<sub>2A/2C</sub>, 5HT<sub>6</sub> ( $K_i$ =4, 11, and 5 nM, respectively), dopamine D<sub>1-4</sub> ( $K_i$ =11-31 nM), histamine H<sub>1</sub> ( $K_i$ =7 nM), and adrenergic  $\alpha_1$  receptors ( $K_i$ =19 nM). Olanzapine is an antagonist with moderate affinity binding for serotonin 5HT<sub>3</sub> ( $K_i$ =57 nM) and muscarinic M<sub>1-5</sub> ( $K_i$ =73, 96, 132, 32, and 48 nM, respectively). Olanzapine binds weakly to GABA<sub>A</sub>, BZD, and  $\beta$ -adrenergic receptors ( $K_i$ >10  $\mu$ M).

Antagonism at receptors other than dopamine and 5HT<sub>2</sub> may explain some of the other therapeutic and side effects of olanzapine. Olanzapine's antagonism of muscarinic M<sub>1-5</sub> receptors may explain its anticholinergic-like effects. Olanzapine's antagonism of histamine H<sub>1</sub> receptors may explain the somnolence observed with this drug. Olanzapine's antagonism of adrenergic  $\alpha_1$  receptors may explain the orthostatic hypotension observed with this drug.

### 12.3 Pharmacokinetics

**Oral Administration, Monotherapy** — Olanzapine is well absorbed and reaches peak concentrations in approximately 6 hours following an oral dose. It is eliminated extensively by first pass metabolism, with approximately 40% of the dose metabolized before reaching the systemic circulation. Food does not affect the rate or extent of olanzapine absorption. Pharmacokinetic studies showed that ZYPREXA tablets and ZYPREXA ZYDIS (olanzapine orally disintegrating tablets) dosage forms of olanzapine are bioequivalent.

Olanzapine displays linear kinetics over the clinical dosing range. Its half-life ranges from 21 to 54 hours (5th to 95th percentile; mean of 30 hr), and apparent plasma clearance ranges from 12 to 47 L/hr (5th to 95th percentile; mean of 25 L/hr).

Reference ID: 2870829

Administration of olanzapine once daily leads to steady-state concentrations in about 1 week that are approximately twice the concentrations after single doses. Plasma concentrations, half-life, and clearance of olanzapine may vary between individuals on the basis of smoking status, gender, and age.

Olanzapine is extensively distributed throughout the body, with a volume of distribution of approximately 1000 L. It is 93% bound to plasma proteins over the concentration range of 7 to 1100 ng/mL, binding primarily to albumin and  $\alpha_1$ -acid glycoprotein.

**Metabolism and Elimination** — Following a single oral dose of  $^{14}\text{C}$  labeled olanzapine, 7% of the dose of olanzapine was recovered in the urine as unchanged drug, indicating that olanzapine is highly metabolized. Approximately 57% and 30% of the dose was recovered in the urine and feces, respectively. In the plasma, olanzapine accounted for only 12% of the AUC for total radioactivity, indicating significant exposure to metabolites. After multiple dosing, the major circulating metabolites were the 10-N-glucuronide, present at steady state at 44% of the concentration of olanzapine, and 4'-N-desmethyl olanzapine, present at steady state at 31% of the concentration of olanzapine. Both metabolites lack pharmacological activity at the concentrations observed.

Direct glucuronidation and cytochrome P450 (CYP) mediated oxidation are the primary metabolic pathways for olanzapine. In vitro studies suggest that CYPs 1A2 and 2D6, and the flavin-containing monooxygenase system are involved in olanzapine oxidation. CYP2D6 mediated oxidation appears to be a minor metabolic pathway in vivo, because the clearance of olanzapine is not reduced in subjects who are deficient in this enzyme.

**Intramuscular Administration** — ZYPREXA IntraMuscular results in rapid absorption with peak plasma concentrations occurring within 15 to 45 minutes. Based upon a pharmacokinetic study in healthy volunteers, a 5 mg dose of intramuscular olanzapine for injection produces, on average, a maximum plasma concentration approximately 5 times higher than the maximum plasma concentration produced by a 5 mg dose of oral olanzapine. Area under the curve achieved after an intramuscular dose is similar to that achieved after oral administration of the same dose. The half-life observed after intramuscular administration is similar to that observed after oral dosing. The pharmacokinetics are linear over the clinical dosing range. Metabolic profiles after intramuscular administration are qualitatively similar to metabolic profiles after oral administration.

#### *Specific Populations*

**Renal Impairment** — Because olanzapine is highly metabolized before excretion and only 7% of the drug is excreted unchanged, renal dysfunction alone is unlikely to have a major impact on the pharmacokinetics of olanzapine. The pharmacokinetic characteristics of olanzapine were similar in patients with severe renal impairment and normal subjects, indicating that dosage adjustment based upon the degree of renal impairment is not required. In addition, olanzapine is not removed by dialysis. The effect of renal impairment on metabolite elimination has not been studied.

**Hepatic Impairment** — Although the presence of hepatic impairment may be expected to reduce the clearance of olanzapine, a study of the effect of impaired liver function in subjects (n=6) with clinically significant (Childs Pugh Classification A and B) cirrhosis revealed little effect on the pharmacokinetics of olanzapine.

**Geriatric** — In a study involving 24 healthy subjects, the mean elimination half-life of olanzapine was about 1.5 times greater in elderly ( $\geq 65$  years) than in nonelderly subjects ( $< 65$  years). Caution should be used in dosing the elderly, especially if there are other factors that might additively influence drug metabolism and/or pharmacodynamic sensitivity [see *Dosage and Administration* (2)].

**Gender** — Clearance of olanzapine is approximately 30% lower in women than in men. There were, however, no apparent differences between men and women in effectiveness or adverse effects. Dosage modifications based on gender should not be needed.

**Smoking Status** — Olanzapine clearance is about 40% higher in smokers than in nonsmokers, although dosage modifications are not routinely recommended.

**Race** — In vivo studies have shown that exposures are similar among Japanese, Chinese and Caucasians, especially after normalization for body weight differences. Dosage modifications for race are, therefore, not recommended.

**Combined Effects** — The combined effects of age, smoking, and gender could lead to substantial pharmacokinetic differences in populations. The clearance in young smoking males, for example, may be 3 times higher than that in elderly nonsmoking females. Dosing modification may be necessary in patients who exhibit a combination of factors that may result in slower metabolism of olanzapine [see *Dosage and Administration* (2)].

**Adolescents (ages 13 to 17 years)** — In clinical studies, most adolescents were nonsmokers and this population had a lower average body weight, which resulted in higher average olanzapine exposure compared to adults.

## **13 NONCLINICAL TOXICOLOGY**

### **13.1 Carcinogenesis, Mutagenesis, Impairment of Fertility**

**Carcinogenesis** — Oral carcinogenicity studies were conducted in mice and rats. Olanzapine was administered to mice in two 78-week studies at doses of 3, 10, 30/20 mg/kg/day (equivalent to 0.8-5 times the maximum recommended human daily oral dose on a  $\text{mg}/\text{m}^2$  basis) and 0.25, 2, 8 mg/kg/day (equivalent to 0.06-2 times the maximum recommended human daily oral dose on a  $\text{mg}/\text{m}^2$  basis). Rats were dosed for 2 years at doses of 0.25, 1, 2.5, 4 mg/kg/day (males) and 0.25, 1, 4, 8 mg/kg/day (females) (equivalent to 0.13-2 and 0.13-4 times the maximum recommended human daily oral dose on a  $\text{mg}/\text{m}^2$  basis, respectively). The incidence of liver hemangiomas and hemangiosarcomas was significantly increased in 1 mouse study in female mice dosed at 8 mg/kg/day (2 times the maximum recommended human daily oral dose on a  $\text{mg}/\text{m}^2$  basis). These tumors were not increased in another mouse study in females dosed at 10 or 30/20 mg/kg/day (2-5 times the maximum recommended human daily oral dose on a  $\text{mg}/\text{m}^2$  basis); in this study, there was a high incidence of early mortalities in males of the 30/20 mg/kg/day group. The incidence of mammary gland adenomas and adenocarcinomas was significantly increased in female mice dosed at  $\geq 2$  mg/kg/day and in female rats dosed at  $\geq 4$  mg/kg/day (0.5 and 2 times the maximum recommended human daily oral dose on a  $\text{mg}/\text{m}^2$  basis, respectively). Antipsychotic

106 drugs have been shown to chronically elevate prolactin levels in rodents. Serum prolactin levels were not measured during the  
107 olanzapine carcinogenicity studies; however, measurements during subchronic toxicity studies showed that olanzapine elevated serum  
108 prolactin levels up to 4-fold in rats at the same doses used in the carcinogenicity study. An increase in mammary gland neoplasms has  
109 been found in rodents after chronic administration of other antipsychotic drugs and is considered to be prolactin mediated. The  
110 relevance for human risk of the finding of prolactin mediated endocrine tumors in rodents is unknown [see *Warnings and Precautions*  
111 (5.15)].

112 **Mutagenesis** — No evidence of genotoxic potential for olanzapine was found in the Ames reverse mutation test, in vivo  
113 micronucleus test in mice, the chromosomal aberration test in Chinese hamster ovary cells, unscheduled DNA synthesis test in rat  
114 hepatocytes, induction of forward mutation test in mouse lymphoma cells, or in vivo sister chromatid exchange test in bone marrow of  
115 Chinese hamsters.

116 **Impairment of Fertility** — In an oral fertility and reproductive performance study in rats, male mating performance, but not  
117 fertility, was impaired at a dose of 22.4 mg/kg/day and female fertility was decreased at a dose of 3 mg/kg/day (11 and 1.5 times the  
118 maximum recommended human daily oral dose on a mg/m<sup>2</sup> basis, respectively). Discontinuance of olanzapine treatment reversed the  
119 effects on male mating performance. In female rats, the precoital period was increased and the mating index reduced at 5 mg/kg/day  
120 (2.5 times the maximum recommended human daily oral dose on a mg/m<sup>2</sup> basis). Diestrus was prolonged and estrus delayed at  
121 1.1 mg/kg/day (0.6 times the maximum recommended human daily oral dose on a mg/m<sup>2</sup> basis); therefore olanzapine may produce a  
122 delay in ovulation.

### 123 **13.2 Animal Toxicology and/or Pharmacology**

124 In animal studies with olanzapine, the principal hematologic findings were reversible peripheral cytopenias in individual dogs  
125 dosed at 10 mg/kg (17 times the maximum recommended human daily oral dose on a mg/m<sup>2</sup> basis), dose-related decreases in  
126 lymphocytes and neutrophils in mice, and lymphopenia in rats. A few dogs treated with 10 mg/kg developed reversible neutropenia  
127 and/or reversible hemolytic anemia between 1 and 10 months of treatment. Dose-related decreases in lymphocytes and neutrophils  
128 were seen in mice given doses of 10 mg/kg (equal to 2 times the maximum recommended human daily oral dose on a mg/m<sup>2</sup> basis) in  
129 studies of 3 months' duration. Nonspecific lymphopenia, consistent with decreased body weight gain, occurred in rats receiving  
130 22.5 mg/kg (11 times the maximum recommended human daily oral dose on a mg/m<sup>2</sup> basis) for 3 months or 16 mg/kg (8 times the  
131 maximum recommended human daily oral dose on a mg/m<sup>2</sup> basis) for 6 or 12 months. No evidence of bone marrow cytotoxicity was  
132 found in any of the species examined. Bone marrows were normocellular or hypercellular, indicating that the reductions in circulating  
133 blood cells were probably due to peripheral (non-marrow) factors.

## 134 **14 CLINICAL STUDIES**

135 When using ZYPREXA and fluoxetine in combination, also refer to the Clinical Studies section of the package insert for  
136 Symbyax.

### 137 **14.1 Schizophrenia**

#### 138 **Adults**

139 The efficacy of oral olanzapine in the treatment of schizophrenia was established in 2 short-term (6-week) controlled trials of  
140 adult inpatients who met DSM III-R criteria for schizophrenia. A single haloperidol arm was included as a comparative treatment in 1  
141 of the 2 trials, but this trial did not compare these 2 drugs on the full range of clinically relevant doses for both.

142 Several instruments were used for assessing psychiatric signs and symptoms in these studies, among them the Brief  
143 Psychiatric Rating Scale (BPRS), a multi-item inventory of general psychopathology traditionally used to evaluate the effects of drug  
144 treatment in schizophrenia. The BPRS psychosis cluster (conceptual disorganization, hallucinatory behavior, suspiciousness, and  
145 unusual thought content) is considered a particularly useful subset for assessing actively psychotic schizophrenic patients. A second  
146 traditional assessment, the Clinical Global Impression (CGI), reflects the impression of a skilled observer, fully familiar with the  
147 manifestations of schizophrenia, about the overall clinical state of the patient. In addition, 2 more recently developed scales were  
148 employed; these included the 30-item Positive and Negative Symptoms Scale (PANSS), in which are embedded the 18 items of the  
149 BPRS, and the Scale for Assessing Negative Symptoms (SANS). The trial summaries below focus on the following outcomes: PANSS  
150 total and/or BPRS total; BPRS psychosis cluster; PANSS negative subscale or SANS; and CGI Severity. The results of the trials  
151 follow:

152 (1) In a 6-week, placebo-controlled trial (n=149) involving 2 fixed olanzapine doses of 1 and 10 mg/day (once daily schedule),  
153 olanzapine, at 10 mg/day (but not at 1 mg/day), was superior to placebo on the PANSS total score (also on the extracted BPRS total),  
154 on the BPRS psychosis cluster, on the PANSS Negative subscale, and on CGI Severity.

155 (2) In a 6-week, placebo-controlled trial (n=253) involving 3 fixed dose ranges of olanzapine (5 ± 2.5 mg/day,  
156 10 ± 2.5 mg/day, and 15 ± 2.5 mg/day) on a once daily schedule, the 2 highest olanzapine dose groups (actual mean doses of 12 and  
157 16 mg/day, respectively) were superior to placebo on BPRS total score, BPRS psychosis cluster, and CGI severity score; the highest  
158 olanzapine dose group was superior to placebo on the SANS. There was no clear advantage for the high-dose group over the medium-  
159 dose group.

160 (3) In a longer-term trial, adult outpatients (n=326) who predominantly met DSM-IV criteria for schizophrenia and who  
161 remained stable on olanzapine during open-label treatment for at least 8 weeks were randomized to continuation on their current  
162 olanzapine doses (ranging from 10 to 20 mg/day) or to placebo. The follow-up period to observe patients for relapse, defined in terms  
163 of increases in BPRS positive symptoms or hospitalization, was planned for 12 months, however, criteria were met for stopping the  
164 trial early due to an excess of placebo relapses compared to olanzapine relapses, and olanzapine was superior to placebo on time to

165 relapse, the primary outcome for this study. Thus, olanzapine was more effective than placebo at maintaining efficacy in patients  
166 stabilized for approximately 8 weeks and followed for an observation period of up to 8 months.

167 Examination of population subsets (race and gender) did not reveal any differential responsiveness on the basis of these  
168 subgroupings.

## 170 **Adolescents**

171 The efficacy of oral olanzapine in the acute treatment of schizophrenia in adolescents (ages 13 to 17 years) was established in  
172 a 6-week double-blind, placebo-controlled, randomized trial of inpatients and outpatients with schizophrenia (n=107) who met  
173 diagnostic criteria according to DSM-IV-TR and confirmed by the Kiddie Schedule for Affective Disorders and Schizophrenia for  
174 School Aged Children-Present and Lifetime Version (K-SADS-PL).

175 The primary rating instrument used for assessing psychiatric signs and symptoms in this trial was the Anchored Version of the  
176 Brief Psychiatric Rating Scale for Children (BPRS-C) total score.

177 In this flexible-dose trial, olanzapine 2.5 to 20 mg/day (mean modal dose 12.5 mg/day, mean dose of 11.1 mg/day) was more  
178 effective than placebo in the treatment of adolescents diagnosed with schizophrenia, as supported by the statistically significantly  
179 greater mean reduction in BPRS-C total score for patients in the olanzapine treatment group than in the placebo group.

180 While there is no body of evidence available to answer the question of how long the adolescent patient treated with  
181 ZYPREXA should be maintained, maintenance efficacy can be extrapolated from adult data along with comparisons of olanzapine  
182 pharmacokinetic parameters in adult and adolescent patients. It is generally recommended that responding patients be continued  
183 beyond the acute response, but at the lowest dose needed to maintain remission. Patients should be periodically reassessed to  
184 determine the need for maintenance treatment.

## 185 **14.2 Bipolar I Disorder (Manic or Mixed Episodes)**

### 186 **Adults**

187 Monotherapy — The efficacy of oral olanzapine in the treatment of manic or mixed episodes was established in 2 short-term  
188 (one 3-week and one 4-week) placebo-controlled trials in adult patients who met the DSM-IV criteria for bipolar I disorder with manic  
189 or mixed episodes. These trials included patients with or without psychotic features and with or without a rapid-cycling course.

190 The primary rating instrument used for assessing manic symptoms in these trials was the Young Mania Rating  
191 Scale (Y-MRS), an 11-item clinician-rated scale traditionally used to assess the degree of manic symptomatology (irritability,  
192 disruptive/aggressive behavior, sleep, elevated mood, speech, increased activity, sexual interest, language/thought disorder, thought  
193 content, appearance, and insight) in a range from 0 (no manic features) to 60 (maximum score). The primary outcome in these trials  
194 was change from baseline in the Y-MRS total score. The results of the trials follow:

195 (1) In one 3-week placebo-controlled trial (n=67) which involved a dose range of olanzapine (5-20 mg/day, once daily,  
196 starting at 10 mg/day), olanzapine was superior to placebo in the reduction of Y-MRS total score. In an identically designed trial  
197 conducted simultaneously with the first trial, olanzapine demonstrated a similar treatment difference, but possibly due to sample size  
198 and site variability, was not shown to be superior to placebo on this outcome.

199 (2) In a 4-week placebo-controlled trial (n=115) which involved a dose range of olanzapine (5-20 mg/day, once daily, starting  
200 at 15 mg/day), olanzapine was superior to placebo in the reduction of Y-MRS total score.

201 (3) In another trial, 361 patients meeting DSM-IV criteria for a manic or mixed episode of bipolar I disorder who had  
202 responded during an initial open-label treatment phase for about 2 weeks, on average, to olanzapine 5 to 20 mg/day were randomized  
203 to either continuation of olanzapine at their same dose (n=225) or to placebo (n=136), for observation of relapse. Approximately 50%  
204 of the patients had discontinued from the olanzapine group by day 59 and 50% of the placebo group had discontinued by day 23 of  
205 double-blind treatment. Response during the open-label phase was defined by having a decrease of the Y-MRS total score to  $\leq 12$  and  
206 HAM-D 21 to  $\leq 8$ . Relapse during the double-blind phase was defined as an increase of the Y-MRS or HAM-D 21 total score to  $\geq 15$ ,  
207 or being hospitalized for either mania or depression. In the randomized phase, patients receiving continued olanzapine experienced a  
208 significantly longer time to relapse.

209 Adjunct to Lithium or Valproate — The efficacy of oral olanzapine with concomitant lithium or valproate in the treatment of  
210 manic or mixed episodes was established in 2 controlled trials in patients who met the DSM-IV criteria for bipolar I disorder with  
211 manic or mixed episodes. These trials included patients with or without psychotic features and with or without a rapid-cycling course.  
212 The results of the trials follow:

213 (1) In one 6-week placebo-controlled combination trial, 175 outpatients on lithium or valproate therapy with inadequately  
214 controlled manic or mixed symptoms (Y-MRS  $\geq 16$ ) were randomized to receive either olanzapine or placebo, in combination with  
215 their original therapy. Olanzapine (in a dose range of 5-20 mg/day, once daily, starting at 10 mg/day) combined with lithium or  
216 valproate (in a therapeutic range of 0.6 mEq/L to 1.2 mEq/L or 50  $\mu$ g/mL to 125  $\mu$ g/mL, respectively) was superior to lithium or  
217 valproate alone in the reduction of Y-MRS total score.

218 (2) In a second 6-week placebo-controlled combination trial, 169 outpatients on lithium or valproate therapy with inadequately  
219 controlled manic or mixed symptoms (Y-MRS  $\geq 16$ ) were randomized to receive either olanzapine or placebo, in combination with  
220 their original therapy. Olanzapine (in a dose range of 5-20 mg/day, once daily, starting at 10 mg/day) combined with lithium or  
221 valproate (in a therapeutic range of 0.6 mEq/L to 1.2 mEq/L or 50  $\mu$ g/mL to 125  $\mu$ g/mL, respectively) was superior to lithium or  
222 valproate alone in the reduction of Y-MRS total score.

### 224 **Adolescents**

Reference ID: 2870829

**Acute Monotherapy** — The efficacy of oral olanzapine in the treatment of acute manic or mixed episodes in adolescents (ages 13 to 17 years) was established in a 3-week, double-blind, placebo-controlled, randomized trial of adolescent inpatients and outpatients who met the diagnostic criteria for manic or mixed episodes associated with bipolar I disorder (with or without psychotic features) according to the DSM-IV-TR (n=161). Diagnosis was confirmed by the K-SADS-PL.

The primary rating instrument used for assessing manic symptoms in this trial was the Adolescent Structured Young-Mania Rating Scale (Y-MRS) total score.

In this flexible-dose trial, olanzapine 2.5 to 20 mg/day (mean modal dose 10.7 mg/day, mean dose of 8.9 mg/day) was more effective than placebo in the treatment of adolescents with manic or mixed episodes associated with bipolar I disorder, as supported by the statistically significantly greater mean reduction in Y-MRS total score for patients in the olanzapine treatment group than in the placebo group.

While there is no body of evidence available to answer the question of how long the adolescent patient treated with ZYPREXA should be maintained, maintenance efficacy can be extrapolated from adult data along with comparisons of olanzapine pharmacokinetic parameters in adult and adolescent patients. It is generally recommended that responding patients be continued beyond the acute response, but at the lowest dose needed to maintain remission. Patients should be periodically reassessed to determine the need for maintenance treatment.

### 14.3 Agitation Associated with Schizophrenia and Bipolar I Mania

The efficacy of intramuscular olanzapine for injection for the treatment of agitation was established in 3 short-term (24 hours of IM treatment) placebo-controlled trials in agitated adult inpatients from 2 diagnostic groups: schizophrenia and bipolar I disorder (manic or mixed episodes). Each of the trials included a single active comparator treatment arm of either haloperidol injection (schizophrenia studies) or lorazepam injection (bipolar I mania study). Patients enrolled in the trials needed to be: (1) judged by the clinical investigators as clinically agitated and clinically appropriate candidates for treatment with intramuscular medication, and (2) exhibiting a level of agitation that met or exceeded a threshold score of  $\geq 14$  on the 5 items comprising the Positive and Negative Syndrome Scale (PANSS) Excited Component (i.e., poor impulse control, tension, hostility, uncooperativeness and excitement items) with at least 1 individual item score  $\geq 4$  using a 1-7 scoring system (1=absent, 4=moderate, 7=extreme). In the studies, the mean baseline PANSS Excited Component score was 18.4, with scores ranging from 13 to 32 (out of a maximum score of 35), thus suggesting predominantly moderate levels of agitation with some patients experiencing mild or severe levels of agitation. The primary efficacy measure used for assessing agitation signs and symptoms in these trials was the change from baseline in the PANSS Excited Component at 2 hours post-injection. Patients could receive up to 3 injections during the 24 hour IM treatment periods; however, patients could not receive the second injection until after the initial 2 hour period when the primary efficacy measure was assessed. The results of the trials follow:

(1) In a placebo-controlled trial in agitated inpatients meeting DSM-IV criteria for schizophrenia (n=270), 4 fixed intramuscular olanzapine for injection doses of 2.5 mg, 5 mg, 7.5 mg and 10 mg were evaluated. All doses were statistically superior to placebo on the PANSS Excited Component at 2 hours post-injection. However, the effect was larger and more consistent for the 3 highest doses. There were no significant pairwise differences for the 7.5 and 10 mg doses over the 5 mg dose.

(2) In a second placebo-controlled trial in agitated inpatients meeting DSM-IV criteria for schizophrenia (n=311), 1 fixed intramuscular olanzapine for injection dose of 10 mg was evaluated. Olanzapine for injection was statistically superior to placebo on the PANSS Excited Component at 2 hours post-injection.

(3) In a placebo-controlled trial in agitated inpatients meeting DSM-IV criteria for bipolar I disorder (and currently displaying an acute manic or mixed episode with or without psychotic features) (n=201), 1 fixed intramuscular olanzapine for injection dose of 10 mg was evaluated. Olanzapine for injection was statistically superior to placebo on the PANSS Excited Component at 2 hours post-injection.

Examination of population subsets (age, race, and gender) did not reveal any differential responsiveness on the basis of these subgroupings.

## 16 HOW SUPPLIED/STORAGE AND HANDLING

### 16.1 How Supplied

The ZYPREXA 2.5 mg, 5 mg, 7.5 mg, and 10 mg tablets are white, round, and imprinted in blue ink with LILLY and tablet number. The 15 mg tablets are elliptical, blue, and debossed with LILLY and tablet number. The 20 mg tablets are elliptical, pink, and debossed with LILLY and tablet number. The tablets are available as follows:

	TABLET STRENGTH					
	2.5 mg	5 mg	7.5 mg	10 mg	15 mg	20 mg
Tablet No.	4112	4115	4116	4117	4415	4420
Identification	LILLY 4112	LILLY 4115	LILLY 4116	LILLY 4117	LILLY 4415	LILLY 4420
NDC Codes:						
Bottles 30	NDC 0002- 4112-30	NDC 0002- 4115-30	NDC 0002- 4116-30	NDC 0002- 4117-30	NDC 0002- 4415-30	NDC 0002- 4420-30
Blisters – ID <sup>a</sup> 100	NDC 0002- 4112-33	NDC 0002- 4115-33	NDC 0002- 4116-33	NDC 0002- 4117-33	NDC 0002- 4415-33	NDC 0002- 4420-33
Bottles 1000	NDC 0002-	NDC 0002-	NDC 0002-	NDC 0002-	NDC 0002-	NDC 0002-

274 | 4112-04 4115-04 4116-04 4117-04 4415-04 4420-04  
275 <sup>a</sup> Identi-Dose<sup>®</sup> (unit dose medication, Lilly).

276 ZYPREXA ZYDIS (olanzapine orally disintegrating tablets) are yellow, round, and debossed with the tablet strength. The  
277 tablets are available as follows:  
278

ZYPREXA ZYDIS Tablets <sup>a</sup>	TABLET STRENGTH			
	5 mg	10 mg	15 mg	20 mg
Tablet No.	4453	4454	4455	4456
Debossed	5	10	15	20
NDC Codes:				
Dose Pack 30 (Child Resistant)	NDC 0002-4453-85	NDC 0002-4454-85	NDC 0002-4455-85	NDC 0002-4456-85

279 ZYPREXA is a registered trademark of Eli Lilly and Company.

280 ZYDIS is a registered trademark of Catalent Pharma Solutions.

281 <sup>a</sup> ZYPREXA ZYDIS (olanzapine orally disintegrating tablets) is manufactured for Eli Lilly and Company by Catalent Pharma  
282 Solutions, United Kingdom, SN5 8RU.  
283

284 ZYPREXA IntraMuscular is available in:  
285  
286

NDC 0002-7597-01 (No. VL7597) – 10 mg vial (1s)

## 287 16.2 Storage and Handling

288 Store ZYPREXA tablets, ZYPREXA ZYDIS, and ZYPREXA IntraMuscular vials (before reconstitution) at controlled room  
289 temperature, 20° to 25°C (68° to 77°F) [see USP]. Reconstituted ZYPREXA IntraMuscular may be stored at controlled room  
290 temperature, 20° to 25°C (68° to 77°F) [see USP] for up to 1 hour if necessary. *Discard any unused portion of reconstituted ZYPREXA*  
291 *IntraMuscular*. The USP defines controlled room temperature as a temperature maintained thermostatically that encompasses the  
292 usual and customary working environment of 20° to 25°C (68° to 77°F); that results in a mean kinetic temperature calculated to be not  
293 more than 25°C; and that allows for excursions between 15° and 30°C (59° and 86°F) that are experienced in pharmacies, hospitals,  
294 and warehouses.  
295

296 Protect ZYPREXA tablets and ZYPREXA ZYDIS from light and moisture. Protect ZYPREXA IntraMuscular from light, do  
297 not freeze.

## 298 17 PATIENT COUNSELING INFORMATION

299 *See FDA-approved Medication Guide for the oral formulations.*

300 Patients should be advised of the following issues and asked to alert their prescriber if these occur while taking ZYPREXA as  
301 monotherapy or in combination with fluoxetine. If you do not think you are getting better or have any concerns about your condition  
302 while taking ZYPREXA, call your doctor. When using ZYPREXA and fluoxetine in combination, also refer to the Patient Counseling  
303 Information section of the package insert for Symbyax.

### 304 17.1 Information on Medication Guide

305 Prescribers or other health professionals should inform patients, their families, and their caregivers about the potential benefits  
306 and potential risks associated with treatment with ZYPREXA, and should counsel them in its appropriate use. A patient Medication  
307 Guide is available for ZYPREXA. Prescribers or other health professionals should instruct patients, their families, and their caregivers  
308 to read the Medication Guide and should assist them in understanding its contents. Patients should be given the opportunity to discuss  
309 the contents of the Medication Guide and to obtain answers to any questions they may have. When using ZYPREXA and fluoxetine in  
310 combination, also refer to the Medication Guide for Symbyax.

### 311 17.2 Elderly Patients with Dementia-Related Psychosis: Increased Mortality and Cerebrovascular Adverse Events (CVAE), 312 Including Stroke

313 Patients and caregivers should be advised that elderly patients with dementia-related psychosis treated with antipsychotic  
314 drugs are at an increased risk of death. Patients and caregivers should be advised that elderly patients with dementia-related psychosis  
315 treated with ZYPREXA had a significantly higher incidence of cerebrovascular adverse events (e.g., stroke, transient ischemic attack)  
316 compared with placebo.

317 ZYPREXA is not approved for elderly patients with dementia-related psychosis [see *Boxed Warning and Warnings and*  
318 *Precautions (5.1)*].

### 319 17.3 Neuroleptic Malignant Syndrome (NMS)

320 Patients and caregivers should be counseled that a potentially fatal symptom complex sometimes referred to as NMS has been  
321 reported in association with administration of antipsychotic drugs, including ZYPREXA. Signs and symptoms of NMS include  
322 hyperpyrexia, muscle rigidity, altered mental status, and evidence of autonomic instability (irregular pulse or blood pressure,  
323 tachycardia, diaphoresis, and cardiac dysrhythmia) [see *Warnings and Precautions (5.3)*].

### 324 17.4 Hyperglycemia

Reference ID: 2870829

325 Patients should be advised of the potential risk of hyperglycemia-related adverse reactions. Patients should be monitored  
326 regularly for worsening of glucose control. Patients who have diabetes should follow their doctor's instructions about how often to  
327 check their blood sugar while taking ZYPREXA [see *Warnings and Precautions (5.4)*].

### 328 **17.5 Hyperlipidemia**

329 Patients should be counseled that hyperlipidemia has occurred during treatment with ZYPREXA. Patients should have their  
330 lipid profile monitored regularly [see *Warnings and Precautions (5.5)*].

### 331 **17.6 Weight Gain**

332 Patients should be counseled that weight gain has occurred during treatment with ZYPREXA. Patients should have their  
333 weight monitored regularly [see *Warnings and Precautions (5.6)*].

### 334 **17.7 Orthostatic Hypotension**

335 Patients should be advised of the risk of orthostatic hypotension, especially during the period of initial dose titration and in  
336 association with the use of concomitant drugs that may potentiate the orthostatic effect of ZYPREXA, e.g., diazepam or alcohol [see  
337 *Warnings and Precautions (5.8)* and *Drug Interactions (7)*]. Patients should be advised to change positions carefully to help prevent  
338 orthostatic hypotension, and to lie down if they feel dizzy or faint, until they feel better. Patients should be advised to call their doctor  
339 if they experience any of the following signs and symptoms associated with orthostatic hypotension: dizziness, fast or slow heart beat,  
340 or fainting.

### 341 **17.8 Potential for Cognitive and Motor Impairment**

342 Because ZYPREXA has the potential to impair judgment, thinking, or motor skills, patients should be cautioned about  
343 operating hazardous machinery, including automobiles, until they are reasonably certain that ZYPREXA therapy does not affect them  
344 adversely [see *Warnings and Precautions (5.12)*].

### 345 **17.9 Body Temperature Regulation**

346 Patients should be advised regarding appropriate care in avoiding overheating and dehydration. Patients should be advised to  
347 call their doctor right away if they become severely ill and have some or all of these symptoms of dehydration: sweating too much or  
348 not at all, dry mouth, feeling very hot, feeling thirsty, not able to produce urine [see *Warnings and Precautions (5.13)*].

### 349 **17.10 Concomitant Medication**

350 Patients should be advised to inform their physicians if they are taking, or plan to take, Symbyax. Patients should also be  
351 advised to inform their physicians if they are taking, plan to take, or have stopped taking any prescription or over-the-counter drugs,  
352 including herbal supplements, since there is a potential for interactions [see *Drug Interactions (7)*].

### 353 **17.11 Alcohol**

354 Patients should be advised to avoid alcohol while taking ZYPREXA [see *Drug Interactions (7)*].

### 355 **17.12 Phenylketonurics**

356 ZYPREXA ZYDIS (olanzapine orally disintegrating tablets) contains phenylalanine (0.34, 0.45, 0.67, or 0.90 mg per 5, 10,  
357 15, or 20 mg tablet, respectively) [see *Description (11)*].

### 358 **17.13 Use in Specific Populations**

359 Pregnancy — Patients should be advised to notify their physician if they become pregnant or intend to become pregnant  
360 during therapy with ZYPREXA [see *Use in Specific Populations (8.1)*].

361 Nursing Mothers — Patients should be advised not to breast-feed an infant if they are taking ZYPREXA [see *Use in Specific*  
362 *Populations (8.3)*].

363 Pediatric Use — ZYPREXA is indicated for treatment of schizophrenia and manic or mixed episodes associated with bipolar I  
364 disorder in adolescents 13 to 17 years of age. Compared to patients from adult clinical trials, adolescents were likely to gain more  
365 weight, experience increased sedation, and have greater increases in total cholesterol, triglycerides, LDL cholesterol, prolactin, and  
366 hepatic transaminase levels. Patients should be counseled about the potential long-term risks associated with ZYPREXA and advised  
367 that these risks may lead them to consider other drugs first [see *Indications and Usage (1.1, 1.2)*]. Safety and effectiveness of  
368 ZYPREXA in patients under 13 years of age have not been established. Safety and effectiveness of ZYPREXA and fluoxetine in  
369 combination in patients <18 years of age have not been established [see *Warnings and Precautions (5.5, 5.6)* and *Use in Specific*  
370 *Populations (8.4)*].

### 371 **17.14 Need for Comprehensive Treatment Program in Pediatric Patients**

372 ZYPREXA is indicated as an integral part of a total treatment program for pediatric patients with schizophrenia and bipolar  
373 disorder that may include other measures (psychological, educational, social) for patients with the disorder. Effectiveness and safety of  
374 ZYPREXA have not been established in pediatric patients less than 13 years of age. Atypical antipsychotics are not intended for use in  
375 the pediatric patient who exhibits symptoms secondary to environmental factors and/or other primary psychiatric disorders.  
376 Appropriate educational placement is essential and psychosocial intervention is often helpful. The decision to prescribe atypical  
377 antipsychotic medication will depend upon the physician's assessment of the chronicity and severity of the patient's symptoms [see  
378 *Indications and Usage (1.3)*].

380 Literature revised Month dd, 2010

381 Eli Lilly and Company, Indianapolis, IN 46285, USA

Reference ID: 2870829

Copyright © 1997, 2010, Eli Lilly and Company. All rights reserved.

PRINTED IN USA

382

383

A1.0 NL 6246 AMP