

## HIGHLIGHTS OF PRESCRIBING INFORMATION

These highlights do not include all the information needed to use APOKYN® safely and effectively. See full prescribing information for APOKYN®.

**APOKYN® (apomorphine hydrochloride injection), for subcutaneous use**

Initial U.S. Approval: 2004

### RECENT MAJOR CHANGES

Dosage and Administration (2.1, 2.6) 1/2025

### INDICATIONS AND USAGE

APOKYN is a non-ergoline dopamine agonist indicated for the acute, intermittent treatment of hypomobility, "off" episodes ("end-of-dose wearing off" and unpredictable "on/off" episodes) associated with advanced Parkinson's disease (1)

### DOSAGE AND ADMINISTRATION

- For subcutaneous use only (2.1)
- Always express APOKYN dose in mL to minimize dosing errors (2.1)
- Treatment with trimethobenzamide is recommended, starting 3 days prior to the first dose of APOKYN. Treatment with trimethobenzamide should only be continued as long as necessary to control nausea and vomiting, and generally no longer than two months (2.2, 5.2, 6.1, 17)
- The starting dose of APOKYN is 0.1 mL (1mg) to 0.2 mL (2 mg); give the first dose under medical supervision; titrate the dose to effect and tolerance; the maximum recommended dose is 0.6 mL (6 mg) (2.3)
- Renal impairment: reduce test dose, and reduce starting dose to 0.1 mL (1 mg) (2.4, 8.6, 12.3)
- APOKYN doses must be separated by at least 2 hours (2.5)

### DOSAGE FORMS AND STRENGTHS

Injection: 30 mg/3 mL (10 mg/mL) of apomorphine hydrochloride solution available in:

- APOKYN single-patient-use cartridges (3, 16)
- APOKYN NXT single-patient-use disposable prefilled pen (3, 16)

### CONTRAINDICATIONS

- Concomitant use of APOKYN with 5HT<sub>3</sub> antagonists, including antiemetics (e.g., ondansetron, granisetron, dolasetron, palonosetron) and alosetron, is contraindicated (4)
- Hypersensitivity to apomorphine, its excipients or sodium metabisulfite (4, 5.13)

### WARNINGS AND PRECAUTIONS

- For subcutaneous use only; thrombus formation and pulmonary embolism have followed intravenous administration of APOKYN (5.1)
- Falling asleep during activities of daily living, and daytime somnolence may occur (5.3)
- Syncope and hypotension/orthostatic hypotension may occur (5.4)
- Falls may occur, or increase (5.5)
- May cause hallucinations and psychotic-like behavior (5.6)
- May cause dyskinesia or exacerbate pre-existing dyskinesia (5.7)
- May cause hemolytic anemia (5.8)
- May cause problems with impulse control and impulsive behaviors (5.9)
- May cause coronary events (5.10)
- May prolong QTc and cause torsades de pointes or sudden death (5.11)

### ADVERSE REACTIONS

Most common adverse reactions (incidence at least 10% greater on APOKYN than on placebo) were yawning, drowsiness/somnolence, dyskinesias, dizziness/postural hypotension, rhinorrhea, nausea and/or vomiting, hallucination/confusion, and edema/swelling of extremities (6.1)

To report SUSPECTED ADVERSE REACTIONS, contact MDD US Operations, LLC at 1-877-727-6596 or FDA at 1-800-FDA-1088 or [www.fda.gov/medwatch](http://www.fda.gov/medwatch).

### DRUG INTERACTIONS

- Concomitant use of antihypertensive medications and vasodilators: increased risk for hypotension, myocardial infarction, pneumonia, falls, and injuries (7.2)
- Dopamine antagonists such as neuroleptics or metoclopramide, may diminish the effectiveness of APOKYN (7.4)

### USE IN SPECIFIC POPULATIONS

- Pregnancy: Based on animal data, may cause fetal harm (8.1)
- Geriatric Use: In clinical trials, patients 65 years of age and older were more likely to experience certain adverse events (8.5)

See 17 for PATIENT COUNSELING INFORMATION and FDA-approved patient labeling.

Revised: 1/2025

## FULL PRESCRIBING INFORMATION: CONTENTS\*

### 1 INDICATIONS AND USAGE

### 2 DOSAGE AND ADMINISTRATION

- 2.1 Important Information
- 2.2 Premedication and Concomitant Medication
- 2.3 Dosing Information and Recommended Dosage
- 2.4 Dosing in Patients with Renal Impairment
- 2.5 Re-treatment and Interruption in Therapy
- 2.6 Preparation and Administration Instructions

### 3 DOSAGE FORMS AND STRENGTHS

### 4 CONTRAINDICATIONS

### 5 WARNINGS AND PRECAUTIONS

- 5.1 Serious Adverse Reactions After Intravenous Administration
- 5.2 Nausea and Vomiting
- 5.3 Falling Asleep During Activities of Daily Living and Somnolence
- 5.4 Syncope / Hypotension / Orthostatic Hypotension
- 5.5 Falls
- 5.6 Hallucinations / Psychotic-Like Behavior
- 5.7 Dyskinesias
- 5.8 Hemolytic Anemia
- 5.9 Impulse Control/Compulsive Behaviors
- 5.10 Coronary Events
- 5.11 QTc Prolongation and Potential for Proarrhythmic Effects
- 5.12 Withdrawal-Emergent Hyperpyrexia and Confusion
- 5.13 Hypersensitivity
- 5.14 Fibrotic Complications
- 5.15 Priapism
- 5.16 Retinal Pathology in Albino Rats

### 6 ADVERSE REACTIONS

- 6.1 Clinical Trials Experience

### 6.2 Postmarketing Experience

### 7 DRUG INTERACTIONS

- 7.1 5HT<sub>3</sub> Antagonists
  - 7.2 Antihypertensive Medications and Vasodilators
  - 7.3 Alcohol
  - 7.4 Dopamine Antagonists
  - 7.5 Drugs Prolonging the QT/QTc Interval
- ### 8 USE IN SPECIFIC POPULATIONS
- 8.1 Pregnancy
  - 8.2 Lactation
  - 8.4 Pediatric Use
  - 8.5 Geriatric Use
  - 8.6 Renal Impairment
  - 8.7 Hepatic Impairment

### 9 DRUG ABUSE AND DEPENDENCE

### 9.2 Abuse

### 10 OVERDOSAGE

### 11 DESCRIPTION

### 12 CLINICAL PHARMACOLOGY

- 12.1 Mechanism of Action
- 12.2 Pharmacodynamics
- 12.3 Pharmacokinetics

### 13 NONCLINICAL TOXICOLOGY

- 13.1 Carcinogenesis, Mutagenesis, Impairment of Fertility

### 14 CLINICAL STUDIES

### 16 HOW SUPPLIED/STORAGE AND HANDLING

- 16.1 How Supplied
- 16.2 Storage and Handling

### 17 PATIENT COUNSELING INFORMATION

\* Sections or subsections omitted from the full prescribing information are not listed.

## FULL PRESCRIBING INFORMATION

### 1 INDICATIONS AND USAGE

APOKYN is indicated for the acute, intermittent treatment of hypomobility, "off" episodes ("end-of-dose wearing off" and unpredictable "on/off" episodes) in patients with advanced Parkinson's disease. APOKYN has been studied as an adjunct to other medications [see *Clinical Studies (14)*].

### 2 DOSAGE AND ADMINISTRATION

#### 2.1 Important Information

For subcutaneous administration only [see *Warnings and Precautions (5.1)*].

The initial dose and dose titrations should be performed by a healthcare provider. Measure blood pressure and pulse in the supine and standing position before and after dosing.

Because the APOKYN pen has markings in milliliters (mL), express the prescribed dose of APOKYN in mL to avoid confusion.

#### 2.2 Premedication and Concomitant Medication

Because of the incidence of nausea and vomiting with APOKYN, it is recommended that treatment with trimethobenzamide 300 mg three times a day be started 3 days prior to the initial dose of APOKYN [see *Warnings and Precautions (5.2)*]. Alternatively, consider starting APOKYN therapy at 0.1 mL (1 mg) and titrate based upon effectiveness and tolerance.

If trimethobenzamide is used, it should only be continued as long as necessary to control nausea and vomiting, and generally no longer than two months after initiation of treatment with APOKYN, as trimethobenzamide increases the incidence of somnolence, dizziness, and falls in patients treated with APOKYN [see *Warnings and Precautions (5.2)*].

Based on reports of profound hypotension and loss of consciousness when apomorphine was administered with ondansetron, the concomitant use of apomorphine with drugs of the 5HT<sub>3</sub> antagonist class, including antiemetics (for example, ondansetron, granisetron, dolasetron, palonosetron) and alosetron are contraindicated [see *Contraindications (4)*].

#### 2.3 Dosing Information and Recommended Dosage

The recommended starting dose of APOKYN is 0.1 mL (1 mg) to 0.2 mL (2 mg). Titrate on the basis of effectiveness and tolerance, up to a maximum recommended dose of 0.6 mL (6 mg) [see *Clinical Studies (14)*].

There is no evidence from controlled trials that doses greater than 0.6 mL (6 mg) gave an increased effect and therefore, individual doses above 0.6 mL (6 mg) are not recommended. The average frequency of dosing in the development program was 3 times per day. There is limited experience with single doses greater than 0.6 mL (6 mg), dosing more than 5 times per day, and total daily doses greater than 2 mL (20 mg).

Begin dosing when patients are in an "off" state. The initial test dose should be a 0.1 mL (1 mg) or 0.2 mL (2 mg) test dose in a setting where medical personnel can closely monitor blood pressure and pulse. Both supine and standing blood pressure and pulse should be checked pre-dose and at 20 minutes, 40 minutes, and 60 minutes post-dose (and after 60 minutes, if there is significant hypotension at 60 minutes). Patients who develop clinically significant orthostatic hypotension in response to this test dose of APOKYN should not be considered candidates for treatment with APOKYN.

If the patient tolerates the initial test dose, and responds adequately, the starting dose should be the same as the test dose, used on an as needed basis to treat recurring "off" episodes. If needed, the dose can be increased in 0.1 mL (1 mg) increments every few days on an outpatient basis.

The general principle guiding subsequent dosing (described in detail below) is to determine that the patient needs and can tolerate a higher test dose, 0.3 mL or 0.4 mL (3 mg or 4 mg, respectively) under close medical supervision. A trial of

outpatient dosing may follow (periodically assessing both efficacy and tolerability), using a dose 0.1 mL (1 mg) lower than the tolerated test dose.

If the patient tolerates a 0.1 mL (1 mg) test dose but does not respond adequately, a test dose of 0.2 mL (2 mg) may be administered under medical supervision, at least 2 hours after the initial test dose, at the next observed "off" period. If the patient tolerates a 0.2 mL (2 mg) test dose but does not respond adequately, a test dose of 0.4 mL (4 mg) may be administered under medical supervision, at least 2 hours after the initial test dose, at the next observed "off" period. Patients who do not tolerate 0.2 mL (2 mg) may need to be titrated slowly. If the patient tolerates and responds to a test dose of 0.4 mL (4 mg), the initial maintenance dose should be 0.3 mL (3 mg) used on an as needed basis to treat recurring "off" episodes as an outpatient. If needed, the dose can be increased in 0.1 mL (1 mg) increments every few days on an outpatient basis.

If the patient does not tolerate a test dose of 0.4 mL (4 mg), a test dose of 0.3 mL (3 mg) may be administered during a separate "off" period under medical supervision, at least 2 hours after the previous dose. If the patient tolerates the 0.3 mL (3 mg) test dose, the initial maintenance dose should be 0.2 mL (2 mg) used on an as needed basis to treat existing "off" episodes. If needed, and the 0.2 mL (2 mg) dose is tolerated, the dose can be increased to 0.3 mL (3 mg) after a few days. In such a patient, the dose should ordinarily not be increased to 0.4 mL (4 mg) on an outpatient basis.

## 2.4 Dosing in Patients with Renal Impairment

For patients with mild and moderate renal impairment, the test dose and starting dose should be reduced to 0.1 mL (1 mg) [see *Clinical Pharmacology (12.3)* and *Use in Specific Populations (8.6)*].

## 2.5 Re-treatment and Interruption in Therapy

If a single dose of APOKYN is ineffective for a particular "off" period, a second dose should not be given for that "off" episode. The efficacy of the safety of administering a second dose for a single "off" episode has not been studied systematically. Do not administer a repeat dose of APOKYN sooner than 2 hours after the last dose.

Patients who have an interruption in therapy of more than a week should be restarted on a 0.2 mL (2 mg) dose and gradually titrated to effect and tolerability.

## 2.6 Preparation and Administration Instructions

A caregiver or patient may administer APOKYN if a healthcare provider determines that it is appropriate. Instruct patients to follow the directions provided in the APOKYN or APOKYN NXT Instructions for Use.

Visually inspect the drug product through the viewing window for particulate matter and discoloration prior to administration. Do not use if the solution is discolored, cloudy, or if foreign particles are present [see *Dosage Forms and Strengths (3)*].

Use proper aseptic technique.

Administer subcutaneously in the stomach area (at least 2 inches from the naval), upper arm, or upper thigh. Rotate the injection site with each injection.

## 3 DOSAGE FORMS AND STRENGTHS

Injection: 30 mg/3 mL (10 mg/mL) apomorphine as a clear, colorless, sterile, solution in:

- a single-patient-use cartridge (APOKYN) for use with a manual reusable pen injector (APOKYN pen)
- a single-patient-use disposable prefilled pen (APOKYN NXT prefilled pen)

## 4 CONTRAINDICATIONS

APOKYN is contraindicated in patients:

- Using concomitant drugs of the 5HT<sub>3</sub> antagonist class including antiemetics (e.g., ondansetron, granisetron, dolasetron, palonosetron) and alosetron [see *Drug Interactions (7.1)*]. There have been reports of profound hypotension and loss of consciousness when APOKYN was administered with ondansetron.

- With hypersensitivity/allergic reaction to apomorphine or to any of the excipients of APOKYN, including a sulfite (i.e., sodium metabisulfite). Angioedema or anaphylaxis may occur [see *Warnings and Precautions (5.13)*].

## **5 WARNINGS AND PRECAUTIONS**

### **5.1 Serious Adverse Reactions After Intravenous Administration**

Following intravenous administration of APOKYN, serious adverse reactions including thrombus formation and pulmonary embolism due to intravenous crystallization of apomorphine have occurred. Consequently, APOKYN should not be administered intravenously.

### **5.2 Nausea and Vomiting**

Nausea and vomiting, which may be severe, can happen with APOKYN when it is administered at recommended doses. Because of this, in domestic clinical studies, 98% of all patients were premedicated with trimethobenzamide, an antiemetic, for three days prior to study enrollment, and were then encouraged to continue trimethobenzamide for at least 6 weeks. Even with the use of concomitant trimethobenzamide in clinical studies, 31% and 11% of the APOKYN -treated patients had nausea and vomiting, respectively, and 3% and 2% of the patients discontinued APOKYN due to nausea and vomiting, respectively. Among 522 patients treated, 262 (50%) discontinued trimethobenzamide while continuing APOKYN. The average time to discontinuation of trimethobenzamide was about 2 months (range: 1 day to 33 months). For the 262 patients who discontinued trimethobenzamide, 249 patients continued apomorphine without trimethobenzamide for a duration of follow-up that averaged 1 year (range: 0 years to 3 years).

The effect of trimethobenzamide on reducing nausea and vomiting during treatment with APOKYN was evaluated in a 12-week, placebo-controlled study in 194 patients. The study suggests that trimethobenzamide reduces the incidence of nausea and vomiting during the first 4 weeks of APOKYN treatment (incidence of nausea and vomiting 43% on trimethobenzamide vs. 59% on placebo). However, over the 12-week period, compared with placebo, patients treated with trimethobenzamide had a greater incidence of somnolence (19% for trimethobenzamide vs. 12% for placebo), dizziness (14% for trimethobenzamide vs. 8% for placebo), and falls (8% for trimethobenzamide vs. 1% for placebo). Therefore, the benefit of treatment with trimethobenzamide must be balanced with the risk for those adverse events, and treatment with trimethobenzamide should only be continued as long as necessary to control nausea and vomiting, and generally no longer than two months.

The ability of concomitantly administered antiemetic drugs (other than trimethobenzamide) has not been studied. Antiemetics with anti-dopaminergic actions (e.g., haloperidol, chlorpromazine, promethazine, prochlorperazine, metaclopramide) have the potential to worsen the symptoms in patients with Parkinson's disease and should be avoided.

### **5.3 Falling Asleep During Activities of Daily Living and Somnolence**

There have been reports in the literature of patients treated with APOKYN subcutaneous injections who suddenly fell asleep without prior warning of sleepiness while engaged in activities of daily living. Somnolence is commonly associated with APOKYN, and it is reported that falling asleep while engaged in activities of daily living always occurs in a setting of pre-existing somnolence, even if patients do not give such a history. Somnolence was reported in 35% of patients treated with APOKYN and in none of the patients in the placebo group. Prescribers should reassess patients for drowsiness or sleepiness, especially since some of the events occur well after the start of treatment. Prescribers should also be aware that patients may not acknowledge drowsiness or sleepiness until directly questioned about drowsiness or sleepiness during specific activities.

Before initiating treatment with APOKYN, advise patients of the risk of drowsiness and ask them about factors that could increase the risk with APOKYN, such as concomitant sedating medications and the presence of sleep disorders. If a patient develops significant daytime sleepiness or falls asleep during activities that require active participation (e.g., conversations, eating, etc.), APOKYN should ordinarily be discontinued. If a decision is made to continue APOKYN, patients should be advised not to drive and to avoid other potentially dangerous activities. There is insufficient information to determine whether dose reduction will eliminate episodes of falling asleep while engaged in activities of daily living.

## 5.4 Syncope / Hypotension / Orthostatic Hypotension

In clinical studies, approximately 2% of APOKYN -treated patients experienced syncope. Dopamine agonists, including APOKYN, may cause orthostatic hypotension at any time but especially during dose escalation. Patients with Parkinson's disease may also have an impaired capacity to respond to an orthostatic challenge. For these reasons, Parkinson's disease patients being treated with dopaminergic agonists ordinarily require careful monitoring for signs and symptoms of orthostatic hypotension, especially during dose escalation, and should be informed of this risk.

Patients undergoing titration of APOKYN showed an increased incidence (from 4% pre-dose to 18% post-dose) of systolic orthostatic hypotension ( $\geq 20$  mm Hg decrease) when evaluated at various times after in-office dosing. A small number of patients developed severe systolic orthostatic hypotension ( $\geq 30$  mm Hg decrease and systolic BP  $\leq 90$  mm Hg) after subcutaneous apomorphine injection. In clinical trials of APOKYN in patients with advanced Parkinson's disease, 59 of 550 patients (11%) had orthostatic hypotension, hypotension, and/or syncope. These events were considered serious in 4 patients ( $< 1\%$ ) and resulted in withdrawal of APOKYN in 10 patients (2%). These events occurred both with initial dosing and during long-term treatment. Whether or not hypotension contributed to other significant adverse events seen (e.g., falls), is unknown. APOKYN causes dose-related decreases in systolic (SBP) and diastolic blood pressure (DBP) [see *Clinical Pharmacology (12.2)*].

In a study of healthy subjects, the hypotensive effect of APOKYN on systolic and diastolic blood pressure was exacerbated by the concomitant use of alcohol or sublingual nitroglycerin (0.4 mg). Patients should avoid alcohol when using APOKYN [see *Drug Interactions (7.3)*]. Patients taking APOKYN should lie down before and after taking sublingual nitroglycerin. Other vasodilators and antihypertensives may also increase the hypotensive effects of APOKYN. Monitor blood pressure for hypotension and orthostatic hypotension in patients taking APOKYN with concomitant antihypertensive medications or vasodilators [see *Drug Interactions (7.2, 7.3)*].

## 5.5 Falls

Patients with Parkinson's disease (PD) are at risk of falling due to underlying postural instability, possible autonomic instability, and syncope caused by the blood pressure lowering effects of the drugs used to treat PD. Subcutaneous APOKYN might increase the risk of falling by simultaneously lowering blood pressure and altering mobility [see *Clinical Pharmacology (12.2)*].

In clinical trials, 30% of patients had events that could reasonably be considered falls and about 5% of patients had falls that were considered serious.

## 5.6 Hallucinations / Psychotic-Like Behavior

In clinical studies, hallucinations were reported by 14% of the APOKYN-treated patients. In one randomized, double-blind, placebo-controlled study, hallucinations or confusion occurred in 10% of patients treated with APOKYN and 0% of patients treated with placebo. Hallucinations resulted in discontinuation of APOKYN in 1% of patients.

Postmarketing reports indicate that patients may experience new or worsening mental status and behavioral changes, which may be severe, including psychotic-like behavior after starting or increasing the dose of APOKYN. Other drugs prescribed to improve the symptoms of Parkinson's disease can have similar effects on thinking and behavior. This abnormal thinking and behavior can consist of one or more of a variety of manifestations, including paranoid ideation, delusions, hallucinations, confusion, disorientation, aggressive behavior, agitation, and delirium.

Patients with a major psychotic disorder should ordinarily not be treated with APOKYN because of the risk of exacerbating psychosis. In addition, certain medications used to treat psychosis may exacerbate the symptoms of Parkinson's disease and may decrease the effectiveness of APOKYN [see *Drug Interactions (7.3)*].

## 5.7 Dyskinesias

APOKYN may cause dyskinesia or exacerbate pre-existing dyskinesia. In clinical studies, dyskinesia or worsening of dyskinesia was reported in 24% of patients. Overall, 2% of APOKYN -treated patients withdrew from studies due to dyskinesias.

## 5.8 Hemolytic Anemia

Hemolytic anemia requiring hospitalization has been reported with apomorphine treatment in the postmarketing setting. Many of the reported cases included positive direct antiglobulin test (Coombs test), suggesting a potential immune-

mediated hemolysis. Severe anemia, angina, and dyspnea have occurred with hemolytic anemia. Some patients were treated with high dose glucocorticoids or blood transfusions. Hemolytic anemia can appear at any time after apomorphine treatment. If a patient develops anemia while taking APOKYN, consider a workup for hemolytic anemia. If hemolytic anemia occurs, consider discontinuing APOKYN or treatment.

### **5.9 Impulse Control/Compulsive Behaviors**

Case reports suggest that patients can experience intense urges to gamble, increased sexual urges, intense urges to spend money uncontrollably, and other intense urges and the inability to control these urges while taking one or more of the medications, including APOKYN, that increase central dopaminergic tone and that are generally used for the treatment of Parkinson's disease. In some cases, although not all, these urges were reported to have stopped when the dose was reduced or the medication was discontinued. Because patients may not recognize these behaviors as abnormal, it is important for prescribers to specifically ask patients or their caregivers about the development of new or increased gambling urges, sexual urges, uncontrolled spending or other urges while being treated with APOKYN. Physicians should consider dose reduction or stopping the medication if a patient develops such urges while taking APOKYN.

### **5.10 Coronary Events**

In clinical studies, 4% of patients treated with APOKYN experienced angina, myocardial infarction, cardiac arrest and/or sudden death; some cases of angina and myocardial infarction occurred in close proximity to APOKYN dosing (within 2 hours), while other cases of cardiac arrest and sudden death were observed at times unrelated to dosing. APOKYN has been shown to reduce resting systolic and diastolic blood pressure and may have the potential to exacerbate coronary and cerebral ischemia in patients with known cardiovascular and cerebrovascular disease. If patients develop signs and symptoms of coronary or cerebral ischemia, prescribers should re-evaluate the continued use of APOKYN.

### **5.11 QTc Prolongation and Potential for Proarrhythmic Effects**

There is a dose related prolongation of QTc interval after apomorphine exposure similar to that achieved with therapeutic doses of APOKYN [see *Clinical Pharmacology (12.2)*]. Doses greater than 6 mg do not provide additional clinical benefit and are not recommended.

Drugs that prolong the QTc interval have been associated with torsades de pointes and sudden death. The relationship of QTc prolongation to torsades de pointes is clearest for larger increases (20 msec and greater), but it is possible that smaller QTc prolongations may also increase risk, or increase it in susceptible individuals, such as those with hypokalemia, hypomagnesemia, bradycardia, concomitant use of other drugs that prolong the QTc interval, or genetic predisposition (e.g., congenital prolongation of the QT interval). Although torsades de pointes has not been observed in association with the use of APOKYN at recommended doses in clinical studies, experience is too limited to rule out an increased risk. Palpitations and syncope may signal the occurrence of an episode of torsades de pointes.

The risks and benefits of APOKYN treatment should be considered prior to initiating treatment with APOKYN in patients with risk factors for prolonged QTc.

### **5.12 Withdrawal-Emergent Hyperpyrexia and Confusion**

A symptom complex resembling neuroleptic malignant syndrome (characterized by elevated temperature, muscular rigidity, altered consciousness, and autonomic instability), with no other obvious etiology, has been reported in association with rapid dose reduction, withdrawal of, or changes in antiparkinsonian therapy.

### **5.13 Hypersensitivity**

Hypersensitivity/allergic reactions characterized by urticaria, rash, pruritus, and/or various manifestations of angioedema may occur because of APOKYN or because of its sulfite excipient. APOKYN contains sodium metabisulfite, a sulfite that may cause allergic-type reactions, including anaphylactic symptoms and life-threatening or less severe asthmatic episodes in certain susceptible people. The overall prevalence of sulfite sensitivity in the general population is unknown and probably low. Sulfite sensitivity is seen more frequently in asthmatic than in nonasthmatic people.

### **5.14 Fibrotic Complications**

Cases of retroperitoneal fibrosis, pulmonary infiltrates, pleural effusion, pleural thickening, and cardiac valvulopathy have been reported in some patients treated with ergot-derived dopaminergic agents. While these complications may resolve

when the drug is discontinued, complete resolution does not always occur. Although these adverse reactions are believed to be related to the ergoline structure of these dopamine agonists, whether other, nonergot derived dopamine agonists, such as APOKYN, can cause these reactions is unknown.

### 5.15 Priapism

APOKYN may cause prolonged painful erections in some patients. In clinical studies, painful erections were reported by 3 of 361 APOKYN -treated men, and one patient withdrew from APOKYN therapy because of priapism. Although no patients in the clinical studies required surgical intervention, severe priapism may require surgical intervention.

### 5.16 Retinal Pathology in Albino Rats

In a 2-year carcinogenicity study of apomorphine in albino rat, retinal atrophy was detected at all subcutaneous doses tested (up to 0.8 mg/kg/day or 2 mg/kg/day in males or females, respectively; less than the maximum recommended human dose of 20 mg/day on a body surface area [mg/m<sup>2</sup>] basis). Retinal atrophy/degeneration has been observed in albino rats treated with other dopamine agonists for prolonged periods (generally during 2-year carcinogenicity studies). Retinal findings were not observed in a 39-week subcutaneous toxicity study of apomorphine in monkey at doses up to 1.5 mg/kg/day, a dose similar to the MRHD on a mg/m<sup>2</sup> basis. The clinical significance of the finding in rat has not been established but cannot be disregarded because disruption of a mechanism that is universally present in vertebrates (e.g., disk shedding) may be involved.

## 6 ADVERSE REACTIONS

The following serious adverse reactions are discussed in more detail in the Warnings and Precautions section of labeling:

- Serious Adverse Reactions After Intravenous Administration [*see Warnings and Precautions (5.1)*]
- Nausea and Vomiting [*see Warnings and Precautions (5.2)*]
- Falling Asleep During Activities of Daily Living and Somnolence [*see Warnings and Precautions (5.3)*]
- Syncope/Hypotension/Orthostatic Hypotension [*see Warnings and Precautions (5.4)*]
- Falls [*see Warnings and Precautions (5.5)*]
- Hallucinations/Psychotic-Like Behavior [*see Warnings and Precautions (5.6)*]
- Dyskinesias [*see Warnings and Precautions (5.7)*]
- Hemolytic Anemia [*see Warnings and Precautions (5.8)*]
- Impulse Control/Compulsive Behaviors [*see Warnings and Precautions (5.9)*]
- Coronary Events [*see Warnings and Precautions (5.10)*]
- QTc Prolongation and Potential for Proarrhythmic Effects [*see Warnings and Precautions (5.11)*]
- Withdrawal-Emergent Hyperpyrexia and Confusion [*see Warnings and Precautions (5.12)*]
- Hypersensitivity [*see Warnings and Precautions (5.13)*]
- Fibrotic Complications [*see Warnings and Precautions (5.14)*]
- Priapism [*see Warnings and Precautions (5.15)*]

### 6.1 Clinical Trials Experience

Because clinical trials are conducted under widely varying conditions, the incidence of adverse reactions (number of unique patients experiencing an adverse reaction associated with treatment per total number of patients treated) observed in the clinical trials of a drug cannot be directly compared to the incidence of adverse reactions in the clinical trials of another drug and may not reflect the incidence of adverse reactions observed in practice.

In placebo-controlled trials, most patients received only one subcutaneous dose of APOKYN. All patients received concomitant levodopa and 86% received a concomitant dopamine agonist. All patients had some degree of spontaneously occurring periods of hypomobility ("off episodes") at baseline.

The most common adverse reactions (APOKYN incidence at least 10% greater than placebo incidence) observed in a placebo-controlled trial were yawning, drowsiness/somnolence, dyskinesias, dizziness/postural hypotension, rhinorrhea, nausea and/or vomiting, hallucination/confusion, and edema/swelling of extremities.

Table 1 presents the most common adverse reactions reported by APOKYN-naïve Parkinson's disease patients who were enrolled in a randomized placebo-controlled, parallel group trial and who were treated for up to 4 weeks (Study 1) [*see*

*Clinical Studies (14)*]. Individual APOKYN doses in this trial ranged from 2 mg to 10 mg, and were titrated to achieve tolerability and control of symptoms.

**Table 1: Adverse Reactions Occurring in Two or More APOKYN-Treated Patients in Study 1**

	APOKYN (n = 20)	PLACEBO (n = 9)
	%	%
Yawning	40	0
Dyskinesias	35	11
Drowsiness or Somnolence	35	0
Nausea and/or Vomiting	30	11
Dizziness or Postural Hypotension	20	0
Rhinorrhea	20	0
Chest Pain/Pressure/Angina	15	11
Hallucination or Confusion	10	0
Edema/Swelling of Extremities	10	0

#### Other Adverse Reactions

##### *Injection Site Reactions*

Patients treated with APOKYN subcutaneous injections during clinical studies, 26% of patients had injection site reactions, including bruising (16%), granuloma (4%), and pruritus (2%).

In addition to those in Table 1, the most common adverse reactions in pooled APOKYN trials (occurring in at least 5% of the patients) in descending order were injection site reaction, fall, arthralgia, insomnia, headache, depression, urinary tract infection, anxiety, congestive heart failure, limb pain, back pain, Parkinson's disease aggravated, pneumonia, confusion, sweating increased, dyspnea, fatigue, ecchymosis, constipation, diarrhea, weakness, and dehydration.

## **6.2 Postmarketing Experience**

The following adverse reactions have been identified during post-approval use of APOKYN. Because these reactions are reported voluntarily from a population of uncertain size, it is not always possible to reliably estimate their frequency or establish a causal relationship to drug exposure.

*Hematologic and Lymphatic Systems:* hemolytic anemia [see *Warnings and Precautions (5.8)*]

## **7 DRUG INTERACTIONS**

### **7.1 5HT<sub>3</sub> Antagonists**

Based on reports of profound hypotension and loss of consciousness when APOKYN was administered with ondansetron, the concomitant use of APOKYN with 5HT<sub>3</sub> antagonists including antiemetics (for example, ondansetron, granisetron, dolasetron, palonosetron) and alosetron, is contraindicated.

### **7.2 Antihypertensive Medications and Vasodilators**

In clinical studies, the following adverse events were experienced more commonly in patients receiving concomitant antihypertensive medications or vasodilators (n=94) than in patients not receiving these medications (n=456): hypotension (10% vs 4%)[see *Warnings and Precautions (5.4)*], myocardial infarction (3% vs 1%), serious pneumonia (5% vs 3%), serious falls (9% vs 3%), and bone and joint injuries (6% vs 2%). Some of the events may be related to the increased incidence of hypotension in patients receiving concomitant antihypertensive medications or vasodilators [see *Warnings and Precautions (5.4, 5.5)*].

Concomitant administration of 0.4 mg sublingual nitroglycerin with APOKYN in healthy subjects causes greater decreases in blood pressure compared to APOKYN alone. When nitroglycerin and APOKYN were concomitantly administered to healthy subjects, the mean largest decrease (the mean of each subject's largest drop in blood pressure measured within the 6-hour period following administration of APOKYN) in supine systolic and diastolic blood pressure (measured over 6 hours) was 9.7 mm Hg and 9.3 mm Hg, respectively [see *Clinical Pharmacology (12.3)*]. The mean

largest decrease in standing systolic and diastolic blood pressure was 14.3 mm Hg and 13.5 mm Hg, respectively. Some individuals experienced very large decreases in standing systolic and diastolic blood pressure, up to a maximum decrease of 65 mm Hg and 43 mm Hg, respectively.

In comparison, the mean largest decrease in supine systolic and diastolic blood pressure when APOKYN was administered alone was 6.1 mm Hg and 7.3 mm Hg, respectively, and in standing systolic and diastolic blood pressure was 6.7 mm Hg and 8.4 mm Hg, respectively.

Patients taking APOKYN should lie down before and after taking sublingual nitroglycerin [see *Warnings and Precautions (5.4)*].

### 7.3 Alcohol

Concomitant administration of high dose (0.6 g/kg) or low dose (0.3 g/kg) ethanol with APOKYN in healthy subjects causes greater decreases in blood pressure compared to APOKYN alone.

When high dose ethanol and APOKYN were concomitantly administered to healthy subjects, the mean largest decrease (the mean of each subject's largest drop in blood pressure measured within the 6-hour period following administration of APOKYN) for supine systolic and diastolic blood pressure was 9.1 mm Hg and 10.5 mm Hg, respectively [see *Clinical Pharmacology (12.3)*]. The mean largest standing systolic and diastolic blood pressure decrease was 11.3 mm Hg and 12.6 mm Hg, respectively. In some individuals, the decrease was as high as 61 mm Hg and 51 mm Hg, respectively, for standing systolic and diastolic blood pressure.

When low dose ethanol and APOKYN were concomitantly administered, the mean largest decrease in supine systolic and diastolic blood pressure was 10.2 mm Hg and 9.9 mm Hg, respectively. The mean largest decrease in standing systolic and diastolic blood pressure was 8.4 mm Hg and 7.1 mm Hg, respectively.

In comparison, the mean largest decrease in supine systolic and diastolic blood pressure when APOKYN was administered alone was 6.1 mm Hg and 7.3 mm Hg, respectively, and in standing systolic and diastolic blood pressure was 6.7 mm Hg and 8.4 mm Hg, respectively.

Patients should avoid drinking alcohol after using APOKYN [see *Warnings and Precautions (5.4)*].

### 7.4 Dopamine Antagonists

Because APOKYN is a dopamine agonist, it is possible that concomitant use of dopamine antagonists, such as the neuroleptics (phenothiazines, butyrophenones, thioxanthenes) or metoclopramide, may diminish the effectiveness of APOKYN. Patients with major psychotic disorders, treated with neuroleptics, should be treated with dopamine agonists only if the potential benefits outweigh the risks.

### 7.5 Drugs Prolonging the QT/QTc Interval

Caution should be exercised when prescribing APOKYN concomitantly with drugs that prolong the QT/QTc interval [see *Warnings and Precautions (5.11)*].

## 8 USE IN SPECIFIC POPULATIONS

### 8.1 Pregnancy

#### Risk Summary

There are no adequate data on the developmental risk associated with use of APOKYN in pregnant women. In animal reproduction studies, apomorphine had adverse developmental effects in rats (increased neonatal deaths) and rabbits (increased incidence of malformation) when administered during pregnancy at clinically relevant doses. These doses were also associated with maternal toxicity [see *Data*]. In the U.S. general population, the estimated background risk of major birth defects and miscarriage in clinically recognized pregnancies is 2% to 4% and 15% to 20%, respectively. The background risk of major birth defects and miscarriage for the indicated population is unknown.

#### Data

##### *Animal Data*

No adverse developmental effects were observed when apomorphine (0.3, 1, or 3 mg/kg/day) was administered by subcutaneous injection to pregnant rats throughout organogenesis; the highest dose tested is 1.5 times the maximum recommended human dose (MRHD) of 20 mg/day on a mg/m<sup>2</sup> basis. Administration of apomorphine (0.3, 1, or 3 mg/kg/day) by subcutaneous injection to pregnant rabbits throughout organogenesis resulted in an increased incidence of malformations of the heart and/or great vessels at the mid and high doses; maternal toxicity was observed at the highest dose tested. The no-effect dose for adverse developmental effects is less than the MRHD on a mg/m<sup>2</sup> basis.

Apomorphine (0.3, 1, or 3 mg/kg/day), administered by subcutaneous injection to females throughout gestation and lactation, resulted in increased offspring mortality at the highest dose tested, which was associated with maternal toxicity. There were no effects on developmental parameters or reproductive performance in surviving offspring. The no-effect dose for developmental toxicity (1 mg/kg/day) is less than the MRHD on a mg/m<sup>2</sup> basis.

## 8.2 Lactation

### Risk Summary

There are no data on the presence of apomorphine in human milk, the effects of apomorphine on the breastfed infant, or the effects of apomorphine on milk production. The developmental and health benefits of breastfeeding should be considered along with the mother's clinical need for APOKYN and any potential adverse effects on the breastfed infant from APOKYN or from the underlying maternal condition.

## 8.4 Pediatric Use

Safety and effectiveness in pediatric patients have not been established.

## 8.5 Geriatric Use

In the APOKYN clinical development program, there were 239 patients less than age 65 treated with APOKYN and 311 patients who were age 65 or older. Confusion and hallucinations were reported more frequently with patients age 65 and older compared to patients with less than age 65. Serious adverse reactions (life-threatening events or events resulting in hospitalization and/or increased disability) were also more common in patients age 65 and older. Patients age 65 and older were more likely to fall (experiencing bone and joint injuries), have cardiovascular events, develop respiratory disorders, and have gastrointestinal events. Patients age 65 and above were also more likely to discontinue APOKYN treatment as a result of one or more adverse reactions.

## 8.6 Renal Impairment

The starting APOKYN dose should be reduced in patients with mild or moderate renal impairment because the concentration and exposure (C<sub>max</sub> and AUC) are increased in these patients. Studies in subjects with severe renal impairment have not been conducted [see *Dosage and Administration (2.4)* and *Clinical Pharmacology (12.3)*].

## 8.7 Hepatic Impairment

Caution should be exercised when administering APOKYN to patients with mild and moderate hepatic impairment because of the increased C<sub>max</sub> and AUC in these patients. Closely monitor patients with mild and moderate hepatic impairment. Studies of subjects with severe hepatic impairment have not been conducted [see *Clinical Pharmacology (12.3)*].

## 9 DRUG ABUSE AND DEPENDENCE

### 9.2 Abuse

In premarketing clinical experience, APOKYN did not reveal any tendency for a withdrawal syndrome or any drug-seeking behavior. However, there are rare postmarketing reports of abuse of medications containing APOKYN or levodopa. In general, these reports consist of patients taking increasing doses of medication in order to achieve a euphoric state.

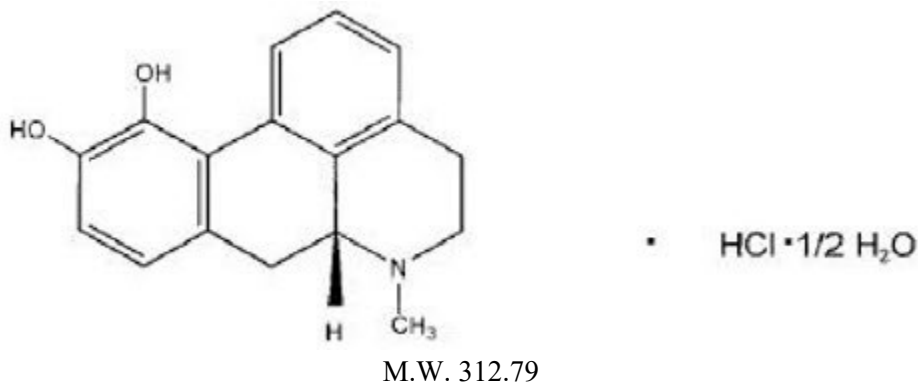
## 10 OVERDOSAGE

A 62-year-old man accidentally injected 25 mg of APOKYN subcutaneously. After 3 minutes, the patient felt nauseated and lost consciousness for 20 minutes. Afterwards, he was alert with a heart rate 40/minute and a supine blood pressure of 90/50. He recovered completely within an hour.

## 11 DESCRIPTION

APOKYN (apomorphine hydrochloride injection) contains apomorphine hydrochloride, a non-ergoline dopamine agonist. Apomorphine hydrochloride is chemically designated as 6 $\alpha$ -Aporphine-10,11-diol hydrochloride hemihydrate with a molecular formula of  $C_{17}H_{17}NO_2 \cdot HCl \cdot \frac{1}{2} H_2O$ . Its structural formula and molecular weight are:

**Figure 1: Structural Formula and Molecular Weight of Apomorphine**



Apomorphine hydrochloride appears as minute, white or grayish-white glistening crystals or as white powder that is soluble in water at 80°C.

APOKYN is a clear, colorless, sterile solution for subcutaneous injection available in 3 mL (30 mg) single-patient use multi-dose cartridges or disposable prefilled pens (APOKYN NXT). Each mL of solution contains 10 mg of apomorphine hydrochloride, USP as apomorphine hydrochloride hemihydrate (equivalent to 8.55 mg apomorphine), 1 mg of sodium metabisulfite, NF and 5 mg of benzyl alcohol, NF (preservative) in water for injection, USP. In addition, each mL of solution may contain sodium hydroxide, NF and/or hydrochloric acid, NF to adjust the pH of the solution.

## 12 CLINICAL PHARMACOLOGY

### 12.1 Mechanism of Action

APOKYN is a non-ergoline dopamine agonist with high *in vitro* binding affinity for the dopamine D<sub>4</sub> receptor, and moderate affinity for the dopamine D<sub>2</sub>, D<sub>3</sub>, and D<sub>5</sub>, and adrenergic  $\alpha_1D$ ,  $\alpha_2B$ ,  $\alpha_2C$  receptors. The precise mechanism of action of APOKYN as a treatment for Parkinson's disease is unknown, although it is believed to be due to stimulation of post-synaptic dopamine D<sub>2</sub>-type receptors within the caudate-putamen in the brain.

### 12.2 Pharmacodynamics

#### Prolongation of the QTc Interval

In a thorough QT study at exposures similar to those achieved with the recommended dosing, apomorphine resulted in a prolongation of QTcF of 10 msec (90% upper confidence interval of 16 msec). The thorough QT study also identified a significant exposure-response relationship between apomorphine concentration and QTcF.

#### Decreases in Blood Pressure

Dose-dependent mean decreases in systolic blood pressure ranged from 5 mm Hg to 16 mm Hg after administration of APOKYN 2 mg and 10 mg, respectively. Dose-dependent mean decreases in diastolic blood pressure ranged from 3 mm Hg to 8 mm Hg after administration of APOKYN 2 mg and 10 mg, respectively. These changes were observed 20 minutes after dosing, and were maximal between 20 and 40 minutes after dosing. Lesser, but still noteworthy blood

pressure decreases persisted up to at least 90 minutes after dosing. Effects on blood pressure are additive when APOKYN is coadministered with nitroglycerin or alcohol [see [Drug Interactions \(7.3, 7.4\)](#)].

## 12.3 Pharmacokinetics

### Absorption

Apomorphine hydrochloride is a lipophilic compound that is rapidly absorbed (time to peak concentration ranges from 10 minutes to 60 minutes) following subcutaneous administration into the abdominal wall. After subcutaneous administration, apomorphine appears to have bioavailability equal to that of an intravenous administration. Apomorphine exhibits linear pharmacokinetics over a dose range of 2 mg to 8 mg following a single subcutaneous injection of APOKYN into the abdominal wall in patients with idiopathic Parkinson's disease.

### Distribution

The plasma-to-whole blood apomorphine concentration ratio is equal to one. Mean (range) apparent volume of distribution was 218 L (123 L to 404 L). Maximum concentrations in cerebrospinal fluid (CSF) are less than 10% of maximum plasma concentrations and occur 10 minutes to 20 minutes later.

### Metabolism and Elimination

The mean apparent clearance (range) is 223 L/hr (125 L/hr to 401 L/hr) and the mean terminal elimination half-life is about 40 minutes (range about 30 minutes to 60 minutes).

The route of metabolism in humans is not known. Potential routes of metabolism in humans include sulfation, N-demethylation, glucuronidation and oxidation. *In vitro*, apomorphine undergoes rapid autooxidation.

### Specific Populations

The clearance of apomorphine does not appear to be influenced by age, gender, weight, duration of Parkinson's disease, levodopa dose, or duration of therapy.

### *Renal Impairment*

In a study comparing renally-impaired subjects (moderately impaired as determined by estimated creatinine clearance) to healthy matched volunteers, the  $AUC_{0-\infty}$  and  $C_{max}$  values were increased by approximately 16% and 50%, respectively, following a single subcutaneous administration of APOKYN into the abdominal wall. The mean time to peak concentrations and the mean terminal half-life of apomorphine were unaffected by the renal status of the individual. Studies in subjects with severe renal impairment have not been conducted. The starting dose for patients with mild or moderate renal impairment should be reduced [see [Dosage and Administration \(2.4\)](#) and [Use in Specific Populations \(8.6\)](#)].

### *Hepatic Impairment*

In a study comparing subjects with hepatic impairment (moderately impaired as determined by the Child-Pugh classification method) to healthy matched volunteers, the  $AUC_{0-\infty}$  and  $C_{max}$  values were increased by approximately 10% and 25%, respectively, following a single subcutaneous administration of APOKYN into the abdominal wall. Studies in subjects with severe hepatic impairment have not been conducted [see [Dosage and Administration \(2.5\)](#) and [Use in Specific Populations \(8.7\)](#)].

### Drug Interaction Studies

#### *Carbidopa/levodopa*

Levodopa pharmacokinetics were unchanged when subcutaneous APOKYN and levodopa were co-administered in patients. However, motor response differences were significant. The threshold levodopa concentration necessary for an improved motor response was reduced significantly, leading to an increased duration of effect without a change in the maximal response to levodopa therapy.

#### *Ethanol and Nitroglycerin*

Co-administration of low dose ethanol (0.3 g/kg) or nitroglycerin (0.4 mg) with APOKYN in healthy subjects did not have a significant impact on the pharmacokinetics of apomorphine, but high dose ethanol (0.6 g/kg), equivalent to approximately 3 standardized alcohol-containing beverages, increased the  $C_{max}$  of apomorphine by about 63%. However,

the hypotensive effect of APOKYN was increased by the concomitant use of alcohol or of sublingual nitroglycerin [see *Warnings and Precautions* (5.4) and *Drug Interactions* (7.2, 7.3)].

#### *Other Drugs Eliminated Via Hepatic Metabolism*

Based upon an *in vitro* study, cytochrome P450 enzymes play a minor role in the metabolism of apomorphine. *In vitro* studies have also demonstrated that drug interactions are unlikely due to apomorphine acting as a substrate, an inhibitor, or an inducer of cytochrome P450 enzymes.

#### *COMT Interactions*

A pharmacokinetic interaction of APOKYN with catechol-O-methyl transferase (COMT) inhibitors or drugs metabolized by this route is unlikely since apomorphine appears not to be metabolized by COMT.

## 13 NONCLINICAL TOXICOLOGY

### 13.1 Carcinogenesis, Mutagenesis, Impairment of Fertility

#### Carcinogenesis

Lifetime carcinogenicity studies of apomorphine were conducted in male (0.1, 0.3, or 0.8 mg/kg/day) and female (0.3, 0.8, or 2 mg/kg/day) rats. Apomorphine was administered by subcutaneous injection for 22 months or 23 months, respectively. In males, there was an increase in Leydig cell tumors at the highest dose tested, which is less than the MRHD (20 mg) on a mg/m<sup>2</sup> basis. This finding is of questionable significance because the endocrine mechanisms believed to be involved in the production of Leydig cell tumors in rats are not relevant to humans. No drug-related tumors were observed in females; the highest dose tested is similar to the MRHD on a mg/m<sup>2</sup> basis.

In a 26-week carcinogenicity study in P53-knockout transgenic mice, there was no evidence of carcinogenic potential when apomorphine was administered by subcutaneous injection at doses up to 20 mg/kg/day (male) or 40 mg/kg/day (female).

#### Mutagenesis

Apomorphine was mutagenic in the *in vitro* bacterial reverse mutation (Ames) and the *in vitro* mouse lymphoma *tk* assays. Apomorphine was clastogenic in the *in vitro* chromosomal aberration assay in human lymphocytes and in the *in vitro* mouse lymphoma *tk* assay. Apomorphine was negative in the *in vivo* micronucleus assay in mice.

#### Impairment of Fertility

Apomorphine was administered subcutaneously at doses up to 3 mg/kg/day (approximately 1.5 times the MRHD on a mg/m<sup>2</sup> basis) to male and female rats prior to and throughout the mating period and continuing in females through gestation day 6. There was no evidence of adverse effects on fertility or on early fetal viability. A significant decrease in testis weight was observed in a 39-week study in cynomolgus monkey at all subcutaneous doses tested (0.3, 1, or 1.5 mg/kg/day); the lowest dose tested is less than the MRHD on a mg/m<sup>2</sup> basis.

In a published fertility study, apomorphine was administered to male rats at subcutaneous doses of 0.2, 0.8, or 2 mg/kg prior to and throughout the mating period. Fertility was reduced at the highest dose tested.

## 14 CLINICAL STUDIES

The effectiveness of APOKYN in the acute symptomatic treatment of the recurring episodes of hypomobility, "off" episodes ("end-of-dose wearing off" and unpredictable "on/off" episodes), in patients with advanced Parkinson's disease was established in three randomized, controlled trials of APOKYN given subcutaneously (Studies 1, 2, and 3). At baseline in these trials, the mean duration of Parkinson's disease was approximately 11 years. Whereas all patients were using concomitant L-dopa at baseline, 86% of patients were using a concomitant oral dopaminergic agonist, 31% were using a concomitant catechol-ortho-methyl transferase (COMT) inhibitor, and 10% were using a concomitant monoamine B oxidase inhibitor. Study 1 was conducted in patients who did not have prior exposure to APOKYN (i.e., APOKYN naïve) and Studies 2 and 3 were conducted in patients with at least 3 months of APOKYN use immediately prior to study enrollment. Almost all patients without prior exposure to APOKYN began taking an antiemetic (trimethobenzamide) three

days prior to starting APOKYN and 50% of patients were able to discontinue the concomitant antiemetic, on average 2 months after initiating APOKYN.

The change from baseline in Part III (Motor Examination) of the Unified Parkinson's Disease Rating Scale (UPDRS) served as the primary outcome assessment measure in each study. Part III of the UPDRS contains 14 items designed to assess the severity of the cardinal motor findings (e.g., tremor, rigidity, bradykinesia, postural instability, etc.) in patients with Parkinson's disease.

### Study 1

Study 1 was a randomized, double-blind, placebo-controlled, parallel-group trial in 29 patients with advanced Parkinson's disease who had at least 2 hours of "off" time per day despite an optimized oral regimen for Parkinson's disease including levodopa and an oral dopaminergic agonist. Patients with atypical Parkinson's disease, psychosis, dementia, hypotension, or those taking dopamine antagonists were excluded from participation. In an office setting, hypomobility was allowed to occur by withholding the patients' Parkinson's disease medications overnight. The following morning, patients (in a hypomobile state) were started on study treatment in a 2:1 ratio (2 mg of APOKYN or placebo given subcutaneously). At least 2 hours after the first dose, patients were given additional doses of study medication until they achieved a "therapeutic response" (defined as a response similar to the patient's response to their usual dose of levodopa) or until 10 mg of APOKYN or placebo equivalent was given. At each injection re-dosing, the study drug dose was increased in 2 mg increments up to 4 mg, 6 mg, 8 mg, 10 mg of APOKYN) or placebo equivalent.

Of the 20 patients randomized to APOKYN, 18 achieved a "therapeutic response" at about 20 minutes. The mean APOKYN dose was 5.4 mg (3 patients on 2 mg, 7 patients on 4 mg, 5 patients on 6 mg, 3 patients on 8 mg, and 2 patients on 10 mg). In contrast, of the 9 placebo-treated patients, none reached a "therapeutic response." The mean change from baseline for UPDRS Part III score for APOKYN group (highest dose) was statistically significant compared to that for the placebo group (Table 2).

**Table 2: Mean Change from Baseline in UPDRS Motor Score for Intent-to-Treat Population in Study 1**

Treatment	Baseline UPDRS Motor Score	Mean Change from Baseline	Difference from placebo
Placebo	36.3	- 0.1	NA
APOKYN	39.7	- 23.9	- 23.8

### Study 2

Study 2 used a randomized, placebo-controlled crossover design of 17 patients with Parkinson's disease who had been using APOKYN for at least 3 months. Patients received their usual morning doses of Parkinson's disease medications and were followed until hypomobility occurred, at which time they received either a single dose of subcutaneous APOKYN (at their usual dose) and placebo on different days in random order. UPDRS Part III scores were evaluated over time. The mean dose of APOKYN was 4 mg (2 patients on 2 mg, 9 patients on 3 mg, 2 patients on 4 mg, and 1 patient each on 4.5 mg, 5 mg, 8 mg, and 10 mg). The mean change from baseline UPDRS Part III score for the APOKYN group was statistically significant compared to that for the placebo group (Table 3).

**Table 3: Mean Change from Baseline in UPDRS Motor Score for Intent-to-Treat Population in Study 2**

Treatment	Baseline UPDRS Motor Score	Mean Change from Baseline	Difference from placebo
Placebo	40.1	- 3.0	NA
APOKYN	41.3	- 20.0	- 17.0

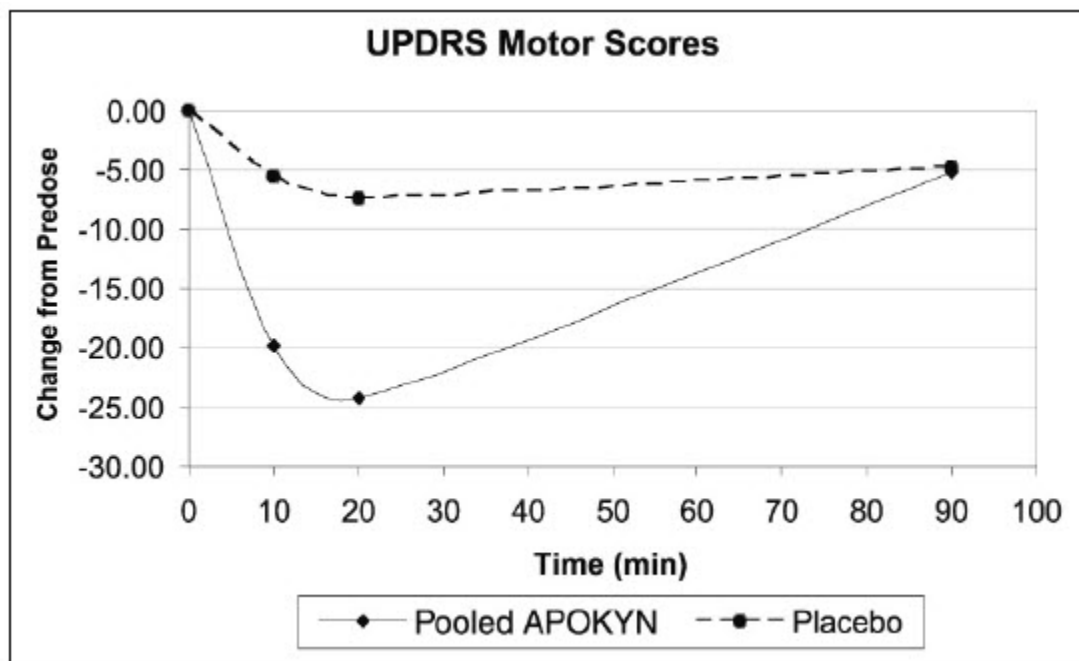
### Study 3

Study 3 used a randomized withdrawal design in 4 parallel groups from 62 patients (APOKYN-35; Placebo-27) with Parkinson's disease who had been using APOKYN for at least 3 months. Patients were randomized to one of the following 4 treatments dosed once by subcutaneous administration: APOKYN at the usual dose (mean dose 4.6 mg), placebo at a volume matching the usual APOKYN dose, APOKYN at the usual dose + 2 mg (0.2 mL) (mean dose 5.8 mg), or placebo at a volume matching the usual APOKYN dose + 0.2 mL. Patients received their usual morning doses of Parkinson's disease medications and were followed until hypomobility occurred, at which time they received the randomized treatment. APOKYN doses ranged between 2 mg – 10 mg. The mean change from baseline for the APOKYN group for UPDRS Part III scores at 20 minutes post dosing was statistically significant compared to that for the placebo group (Table 4). Figure 2 describes the mean change from baseline in UPDRS Motor Scores over time for pooled APOKYN and placebo administration.

**Table 4: Mean Change from Baseline in UPDRS Motor Score for Intent-to-Treat Population in Study 3**

Treatment	Baseline UPDRS Motor Score	Mean Change from Baseline	Difference from placebo
Placebo (Pooled)	40.6	- 7.4	NA
APOKYN (Pooled)	42.0	- 24.2	- 16.8

**Figure 2: Mean Change from Baseline in UPDRS Motor Scores of Pooled APOKYN Groups and Placebo Group in Study 3**



In Study 3, the mean changes from baseline for UPDRS Part III scores at 20 minutes post dosing for the APOKYN and higher dose APOKYN groups were 24 and 25, respectively. This result suggests that patients chronically treated at a dose of 4 mg might derive little additional benefit from a dose increment of 2 mg. There was also an increased incidence of adverse reactions in patients randomized to higher APOKYN dose.

## 16 HOW SUPPLIED/STORAGE AND HANDLING

### 16.1 How Supplied

APOKYN (apomorphine hydrochloride injection) is a clear, colorless, sterile solution, available as follows:

Product Name	Strength (Concentration)	Package Size and Description	NDC
APOKYN	30 mg/3 mL (10 mg/mL)	Carton of five 3 mL <i>cartridges for single-patient-use</i> with a pen injector (APOKYN pen*)	27505-004-05
APOKYN NXT	30 mg/3 mL (10 mg/mL)	Carton of five 3 mL <i>disposable single-patient-use-prefilled pens</i>	27505-005-05

\*APOKYN pen is supplied in a carton containing one reusable pen injector, five needles, and a carrying case.

### 16.2 Storage and Handling

Store at 25°C (77°F). Excursions permitted between 15°C to 30°C (59°F to 86°F) [See USP Controlled Room Temperature]

## 17 PATIENT COUNSELING INFORMATION

Advise the patient to read the FDA-approved patient labeling (Patient Information and Instructions for Use)

## Administration with the APOKYN Pen or APOKYN NXT Prefilled Pen

Instruct patients and caregivers that APOKYN is dosed in milliliters, not milligrams.

If using the APOKYN pen, inform patients and caregivers that it is possible to dial in their usual dose of APOKYN even though the cartridge may contain less than that amount of drug. In this case, they will receive only a partial dose with the injection, and the amount left to inject will appear in the dosing window. To complete the correct dose, patients/caregivers will need to "re-arm" the device and dial in the correct amount of the remaining dose. Patients and caregivers should be alerted to the fact that there may be insufficient drug left in the cartridge to deliver a complete dose (for example, patients and caregivers should be urged to keep records of how many doses they have delivered for each cartridge, so that they can replace any cartridge that has an inadequate amount of drug remaining).

Instruct patients to rotate the injection site and to observe proper aseptic technique.

Advise patients that APOKYN is intended only for subcutaneous injection and must not be given intravenously because of the risk of serious complications such as thrombus formation and pulmonary embolism due to crystallization [see [Warnings and Precautions \(5.1\)](#)].

## Hypersensitivity / Allergic Reactions

Advise patients that hypersensitivity/allergic reaction characterized by urticaria, rash, pruritus, and/or various manifestations of angioedema may occur because of APOKYN or any of its excipients including a sulfite (i.e., sodium metabisulfite). Inform patients with a sulfite sensitivity that they may experience various allergic-type reactions, including anaphylactic symptoms and life-threatening asthmatic attacks [see [Warnings and Precautions \(5.13\)](#)]. Advise patients who experience any hypersensitivity/allergic reaction to APOKYN that they should not take APOKYN again [see [Contraindications \(4\)](#)].

## Nausea and Vomiting

Advise patients they may experience nausea and/or vomiting, which may be severe, and that treatment with oral trimethobenzamide 300 mg 3 times per day for 3 days prior to starting APOKYN injections has been used to help minimize these symptoms. Alternatively, starting APOKYN at a lower dose and titrating based on individual tolerance and treatment effect may be attempted. Advise patients that APOKYN taken with trimethobenzamide may increase the risks for somnolence, dizziness, and falls, and to consult their healthcare provider before discontinuing trimethobenzamide [see [Warnings and Precautions \(5.2\)](#)].

## Falling Asleep Suddenly and Sedation / Sleepiness

Alert patients to the potential sedating effects of APOKYN, including somnolence and falling asleep while engaged in activities of daily living. Instruct patients not to drive a car or engage in other potentially dangerous activities until they have gained sufficient experience with APOKYN to gauge whether or not it affects their mental and/or motor performance adversely. Advise patients that if increased somnolence or episodes of falling asleep during activities of daily living (e.g., watching television, passenger in a car, etc.) occur, they should not drive or participate in potentially dangerous activities until they have contacted their physician. Because of possible additive effects of alcohol use, advise patients to limit their alcohol intake [see [Warnings and Precautions \(5.3\)](#)].

## Hypotension / Orthostatic Hypotension

Advise patients that they may develop postural (orthostatic) hypotension with or without symptoms such as dizziness, nausea, syncope, and sometimes sweating. Hypotension and/or orthostatic symptoms may occur more frequently during initial therapy or with an increase in dose at any time (cases have been seen after months of treatment). Instruct patients to rise slowly after sitting or lying down after taking APOKYN. Inform patients that alcohol and nitroglycerin (and possibly other vasodilators and antihypertensive medications) may potentiate the hypotensive effect of APOKYN [see [Warnings and Precautions \(5.4\)](#)]. Instruct patients ideally to lie down before taking sublingual nitroglycerin and to remain supine and avoid standing for at least 45 minutes after nitroglycerin. Instruct patients taking APOKYN to avoid alcohol while using APOKYN and of the increased hypotensive effects of APOKYN taken with nitroglycerin or by taking APOKYN after alcohol ingestion.

## Falls

Alert patients that they may have increased risk for falling when using APOKYN [see [Warnings and Precautions \(5.5\)](#)].

## Hallucinations and/or Psychotic-Like Behavior

Inform patients that hallucinations or other manifestations of psychotic-like behavior can occur. Tell patients if they have a major psychotic disorder, ordinarily they should not use APOKYN because of the risk of exacerbating the psychosis. Patients with a major psychotic disorder should also be aware that many treatments for psychosis may decrease the effectiveness of APOKYN [see *Warnings and Precautions (5.6)*].

#### Dyskinesia

Inform patients that APOKYN may cause and/or exacerbate pre-existing dyskinesias [see *Warnings and Precautions (5.7)*].

#### Hemolytic Anemia

Inform patients and caregivers that hemolytic anemia may occur and to contact their healthcare provider if they develop any signs or symptoms [see *Warnings and Precautions (5.8)*].

#### Impulse Control / Compulsive Behaviors

Patients and their caregivers should be alerted to the possibility that they may experience intense urges to spend money uncontrollably, intense urges to gamble, increased sexual urges, binge eating and/or other intense urges and the inability to control these urges while taking APOKYN [see *Warnings and Precautions (5.9)*].

#### Coronary Events

Inform patients that APOKYN may cause coronary events including angina and myocardial infarction and these outcomes could possibly be related to significant hypotension/orthostatic hypotension [see *Warnings and Precautions (5.10)*].

#### QTc Prolongation and Potential for Proarrhythmic Effects

Alert patients that APOKYN may cause QTc prolongation and might produce proarrhythmic effects that could cause torsades de pointes and sudden death. Palpitations and syncope may signal the occurrence of an episode of torsades de pointes [see *Warnings and Precautions (5.11)*].

#### Withdrawal-Emergent Hyperpyrexia and Confusion

Advise patients to contact their healthcare provider if they wish to discontinue APOKYN or decrease the dose of APOKYN [see *Warnings and Precautions (5.12)*].

#### Priapism

Advise patients that APOKYN may cause prolonged painful erections and that if this occurs, they should seek medical attention immediately [see *Warnings and Precautions (5.15)*].

#### Injection Site Reactions

Inform patients that injections of APOKYN may result in injection site reactions including bruising, granuloma, and pruritus [see *Adverse Reactions (6.1)*].

Distributed by:

MDD US Operations, LLC, a subsidiary of Supernus Pharmaceuticals, Inc.  
9715 Key West Avenue  
Rockville, MD 20850

MDD US Operations, LLC is the exclusive licensee and distributor of APOKYN or APOKYN NXT in the United States and Its territories.

© 2025. APOKYN or APOKYN NXT is a registered trademark of BRITUSWIP.

RA-APO\_PEN-V19-2025

## PATIENT INFORMATION

### APOKYN™ (AY-po-kin)

(apomorphine hydrochloride injection)

**Read this Patient Information before you start using APOKYN and each time you get a refill. There may be new information. This information does not take the place of talking to your healthcare provider about your medical condition or your treatment.**

#### What is APOKYN?

APOKYN is a prescription medicine used to treat acute, intermittent episodes of poor mobility called “off” episodes (end-of-dose wearing “off” or unpredictable “on-off” episodes) in people with advanced Parkinson’s disease (PD).

It is not known if APOKYN is safe and effective in children.

#### Who should not take APOKYN?

##### Do not take APOKYN if you are:

- taking certain medicines to treat nausea called 5HT3 antagonists including, ondansetron, granisetron, dolasetron, and palonosetron, or the medicine alosetron. People taking ondansetron together with apomorphine, the active ingredient in APOKYN, have had very low blood pressure and lost consciousness or “blacked out.”
- allergic to apomorphine hydrochloride or to any of the ingredients in APOKYN and experience hives, itching, rash, or swelling (e.g., eyes, tongue, etc.). APOKYN also contains a sulfite called sodium metabisulfite. Sulfites can cause severe, life-threatening allergic reactions in some people. An allergy to sulfites is not the same as an allergy to sulfa. People with asthma are more likely to be allergic to sulfites. Call your healthcare provider if you have hives, itching, rash, swelling of the eyes, tongue, lips, chest pain, trouble breathing or swallowing. See the end of this leaflet for a complete list of ingredients in APOKYN.

#### What should I tell my healthcare provider before using APOKYN?

##### Before you start using APOKYN, tell your healthcare provider if you:

- have difficulty staying awake during the daytime
- have dizziness
- have fainting spells
- have low blood pressure
- have asthma
- are allergic to any medicines containing sulfites
- have liver problems
- have kidney problems
- have heart problems
- have had a stroke or other brain problems
- have a mental health problem called a major psychotic disorder
- drink alcohol
- are pregnant or plan to become pregnant. It is not known if APOKYN will harm your unborn baby.
- are breastfeeding or plan to breastfeed. It is not known if APOKYN passes into your breast milk. You and your healthcare provider should decide if you will take APOKYN or breastfeed. You should not do both.

**Tell your healthcare provider about all the medicines you take**, including prescription and non-prescription medicines, vitamins, and herbal supplements.

Using APOKYN with certain other medicines may affect each other. Using APOKYN with other medicines can cause serious side effects.

- If you take nitroglycerin under your tongue while using APOKYN, your blood pressure may decrease and cause dizziness. After taking nitroglycerin, you should lie down and try to continue lying down for at least 45 minutes. You should avoid standing for 45 minutes after taking nitroglycerin.

Know the medicines you take. Keep a list of them to show your healthcare provider or pharmacist when you get a new medicine.

### How should I use APOKYN?

- APOKYN can be given by the APOKYN Pen to use with cartridges or by the APOKYN NXT Prefilled Pen. Read the Instructions for Use for either the APOKYN Pen or the APOKYN NXT Prefilled Pen for specific information about the right way to use APOKYN.
- Use APOKYN exactly as your healthcare provider tells you to use it. Your healthcare provider will tell you how much APOKYN to use and teach you the right way to use it.
- A caregiver may also give APOKYN if your healthcare provider has taught them the right way to use it.
- Your healthcare provider may change your dose if needed.
- **Do not** change your dose of APOKYN or use it more often than prescribed unless your healthcare provider has told you to.
- **Do not** give another dose of APOKYN sooner than 2 hours after the last dose.
- APOKYN is dosed in milliliters (mL), **not** milligrams (mg). Make sure your prescription tells you how many milliliters (mL) to use.
- Inject APOKYN under your skin (subcutaneously). **Do not** inject APOKYN into a vein.
- Keep a record of how much APOKYN you have used each time you inject, or your care partner gives you an injection.
- Use a new needle with each injection. Never reuse a needle.
- APOKYN is a clear and colorless liquid. Do not use APOKYN if it appears cloudy, colored, or to contain particles, and call your pharmacist.
- Your healthcare provider may prescribe another medicine called an antiemetic to take while you are using APOKYN. Antiemetic medicines help to decrease the symptoms of nausea and vomiting that can happen with APOKYN.
- If you take too much APOKYN, call your healthcare provider. If you experience severe or serious side effects such as chest pain or prolonged erection lasting more than 4 hours, go to the nearest hospital emergency room.

### What should I avoid while using APOKYN?

- **Do not** drink alcohol while you are using APOKYN. It can increase your chance of developing serious side effects.
- **Do not** take medicines that make you sleepy while you are using APOKYN.
- **Do not** drive, operate machinery, or do other dangerous activities until you know how APOKYN affects you.
- **Do not** change your body position too fast. Get up slowly from sitting or lying. APOKYN can lower your blood pressure and cause dizziness or fainting.

### What are the possible side effects of APOKYN?

**APOKYN may cause serious side effects. Call your healthcare provider right away if you have any of the serious side effects, including:**

- **allergic reaction.** An allergic reaction with side effects of hives, itching, rash, swelling (e.g., eyes, tongue, etc.); trouble breathing and/or swallowing may occur after injecting APOKYN.

- **blood clots.** Injecting APOKYN into a vein (intravenous) can cause blood clots. Do not inject APOKYN in your vein.
- **nausea and vomiting. These are common side effects of APOKYN.** Nausea and vomiting, which may be serious or severe, can happen with APOKYN. Your healthcare provider may prescribe a medicine to help decrease nausea and vomiting. Follow your healthcare providers instructions on how to take and when to stop this medicine.
- **sleepiness or falling asleep during the day. These are common side effects and may be serious.** Some people treated with APOKYN may get sleepy during the day or fall asleep without warning while doing everyday activities such as talking, eating, or driving a car.
- **dizziness. This is a common side effect and may be serious.** APOKYN can lower your blood pressure and cause dizziness. Dizziness can happen when APOKYN treatment is started or when the APOKYN dose is increased. **Do not** get up too fast from sitting or after lying down, especially if you have been sitting or lying down for a long period of time.
- **falls.** The changes that can happen with Parkinson's disease (PD), and the effects of some PD medicines, can increase the risk of falling. APOKYN may also increase your risk of falling. changes that can happen with PD, and the effects of some PD medicines, can increase the risk of falling.
- **hallucinations or psychotic-like behavior.** APOKYN can cause or worsen psychotic-like behavior including hallucinations (seeing or hearing things that are not real), confusion, excessive suspicion, aggressive behavior, agitation, delusional beliefs (believing things that are not real), and disorganized thinking.
- **sudden uncontrolled movements (dyskinesia). This is a common side effect and may be serious.** Some people with PD may get sudden, uncontrolled movements after treatment with some PD medicines. APOKYN can cause or make dyskinesias worse.
- **low red blood cells (hemolytic anemia).** Tell your healthcare provider if you have any of the following signs or symptoms: you become pale, fast heartbeat, feel more tired or weaker than usual, skin or eyes look yellow, chest pain, shortness of breath or trouble breathing, dark-colored urine, fever, dizziness, or confusion.
- **intense urges.** Some people with PD have reported new or increased gambling urges, increased sexual urges, and other intense urges, while taking PD medicines, including APOKYN.
- **heart problems.** If you have shortness of breath, fast heartbeat, or chest pain while taking APOKYN, call your healthcare provider or get emergency help right away.
- **serious heart rhythm changes (QT prolongation).** Tell your healthcare provider right away if you have a change in your heartbeat (a fast or irregular heartbeat), or if you faint.
- **fever and confusion.** This can happen in some people when their PD medicine is stopped or there is a fast decrease in the dose of their PD medicine.
- **tissue changes (fibrotic complications).** Some people have had changes in the tissues of their pelvis, lungs, and heart valves when taking medicines called nonergot derived dopamine agonists like APOKYN.
- **prolonged painful erections (priapism).** APOKYN may cause prolonged, painful erections in some people. If you have an erection that lasts more than 4 hours you should call your healthcare provider or go to the nearest hospital emergency room right away.

**Common side effects of APOKYN include:**

- yawning
- running nose
- confusion

- swelling of your hands, arms, legs, and feet
- injection site reactions. Bruising, swelling, and itching can happen at the site where you inject APOKYN.

Tell your healthcare provider if you have any side effect that bothers you or that does not go away.

These are not all the possible side effects of APOKYN. For more information, ask your healthcare provider or pharmacist.

Call your doctor for medical advice about side effects. You may report side effects to FDA at 1-800-FDA-1088.

You may also report side effects to MDD US Operations at 1-877-727-6596.

#### **How should I store APOKYN?**

- Store APOKYN at room temperature, 68°F to 77°F (20°C to 25°C).
- Safely throw away medicine that is out of date or no longer needed.

**Keep APOKYN and all medicines out of the reach of children.**

#### **General information about the safe and effective use of APOKYN.**

Medicines are sometimes prescribed for purposes other than those listed in a patient information leaflet. **Do not** use APOKYN for a condition for which it was not prescribed. Do not give APOKYN to other people, even if they have the same symptoms that you have. It may harm them.

This Patient Information leaflet summarizes the most important information about APOKYN. If you would like more information, talk with your healthcare provider. You can ask your pharmacist or healthcare provider for information about APOKYN that is written for health professionals.

For more information, go to [www.apokyn.com](http://www.apokyn.com) or call 1-877-727-6596.

#### **What are the ingredients in APOKYN?**

**Active ingredient:** apomorphine hydrochloride, USP

**Inactive ingredients:** sodium metabisulfite, NF, benzyl alcohol, NF, water for injection, USP. It may also contain sodium hydroxide, NF and/or hydrochloric acid, NF.

Distributed by:  
MDD US Operations, LLC  
Rockville, MD 20850

# APOKYN<sup>®</sup> Pen Instructions for Use

Designed to be used only with  
3 mL APOKYN<sup>®</sup> (apomorphine hydrochloride injection) Cartridges

For more information, call your specialty pharmacy provider  
or 1-877-7APOKYN (727-6596).



**APOKYN<sup>®</sup>**  
(apomorphine hydrochloride injection)



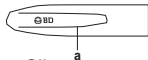


APOKYN Pen

Reference ID: 5523375

- **APOKYN<sup>®</sup> (apomorphine hydrochloride injection) is for under the skin (subcutaneous) injection only.**
- **Do not** inject APOKYN into a vein.
- **Do not** use the APOKYN<sup>®</sup> Pen unless you and your care partner have been taught the right way to use it and both of you understand all of the instructions.
- The **APOKYN Pen** is for use only with 3 mL **APOKYN<sup>®</sup>** (apomorphine hydrochloride injection) Cartridges.
- The **APOKYN Pen** is only for use by 1 patient and should not be shared.

## Gray Pen Cap

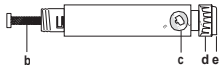


a. Clip

## Teal Cartridge Holder



## Gray Pen Body



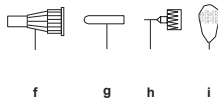
b. Black Rod

c. White Dose Window

d. White Dose Knob

e. Teal Injection Button

## Pen Needle Unit



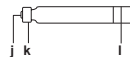
f. Outer Needle Shield

g. Pink Inner Needle Shield

h. Pen Needle

i. Pink Paper Tab

## Cartridge



j. Rubber Septum

k. Metal Cap

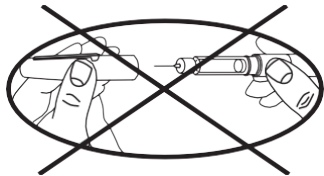
l. Cartridge Plunger

## Read First: Important Safety Information

- ◆ The **APOKYN Pen** is a medicine delivery device. It is very important that you or your care partner read this Instructions for Use and follow the instructions for using the **APOKYN Pen** correctly to receive the correct APOKYN dose.
- ◆ Always perform a flow check (prime) before every injection and after loading a new cartridge.
- ◆ The liquid in the **APOKYN Cartridge** can cause irritation if it gets on your skin or in your eyes. Flush your eyes with cold water and wash the liquid off your skin right away if this happens.

- ◆ The BD pen needle unit is sterile. Avoid contaminating the needle after opening. **Do not** place it on a surface or touch other items with the needle.
- ◆ **Do not** dial the dose or try to correct a dialing error with the pen needle in the skin. You could receive the wrong dose.
- ◆ Be careful when removing the needle. Accidental needle sticks can transmit serious infections.

## Never store or carry the APOKYN Pen with a pen needle attached.



**Never recap pen with  
needle attached.**

Storing or carrying the **APOKYN Pen** with a pen needle attached may let:

- ◆ Air enter the cartridge
- ◆ Medicine leak out

This can affect your APOKYN dose.

The **APOKYN Pen** should only be used with pen needles (29G x 1/2"). These needles are available through your specialty pharmacy provider or your local pharmacy.



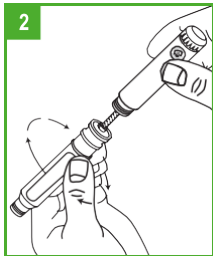
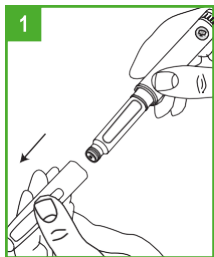
**You must use a new, sterile BD pen needle with each injection.**



**Reused Needle**

Magnification: 50x

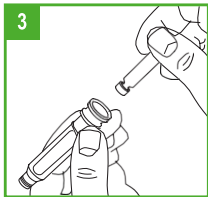
# How to Use the APOKYN Pen



## Preparing the APOKYN Pen for Cartridge Loading

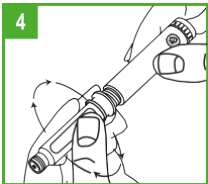
**Step 1.** Remove the gray pen cap by pulling it straight off.

**Step 2.** Unscrew the teal cartridge holder from the gray pen body by turning it clockwise.

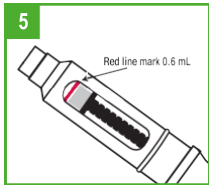


## Loading a Cartridge

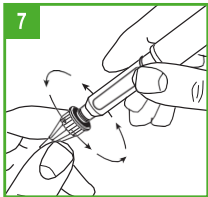
**Step 3.** Only use **APOKYN** that is clear and colorless. Do not use an **APOKYN Cartridge** that contains medicine that is cloudy, green, or contains particles. Call your specialty pharmacy provider for replacement cartridges. Insert the **APOKYN Cartridge**, metal cap first, into the teal cartridge holder.



**Step 4.** Lower the gray pen body onto the teal cartridge holder so that the black rod presses against the cartridge plunger. Screw the teal cartridge holder onto the gray pen body. Tighten the pieces by turning the teal cartridge holder clockwise until no gap remains and 1 of the white arrows line up with the white marker on the gray pen body.



**Step 5.** If you already have a cartridge in the pen and have used the pen, you should check the cartridge through the window in the teal cartridge holder to make sure there is enough **APOKYN** solution in the cartridge to provide your next dose. If the gray cartridge plunger has reached the red line on the cartridge, remove the cartridge and insert a new cartridge into the pen before attaching the pen needle and preparing the dose.



## Attaching the Pen Needle

**Step 6.** Remove the pink paper tab from the back of a new pen needle. Use a new needle for each injection. **Never reuse needles.**

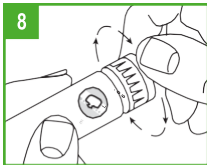
**Step 7.** Holding the **APOKYN Pen** by the teal cartridge holder, push the pen needle unit onto the pen. Screw the threaded hub of the pen needle onto the teal cartridge holder counter-clockwise. When the needle unit is attached, remove the outer shield that protects the needle with a gentle pull. Save the outer shield. You will use it to remove the needle from the pen after the injection is finished. **Do not** remove the inner needle shield at this time. **The needle is sterile and must stay clean. After opening, do not place the needle on a surface or let it touch anything.**

## Preparing (Priming) the APOKYN Pen for Use

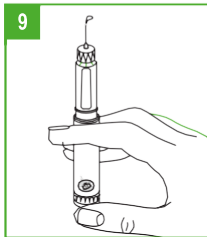
**IMPORTANT** – Prior to each injection, it is important that the **APOKYN Pen** be properly primed.

**For a new APOKYN Cartridge** (1 that has **not** been used before), repeat the priming procedure described on the next page (Steps 8-9) 3 or 4 times to make sure all the air has been removed from the needle and cartridge.

**For an APOKYN Cartridge** you have used before (1 that has been previously primed), repeat the priming procedure described on the next page (Steps 8-9) **1 time** to make sure all the air has been removed from the needle and cartridge.



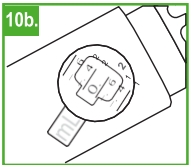
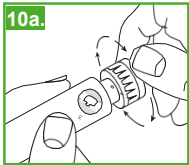
**Step 8.** You must prepare (prime) the **APOKYN Pen** for use before injecting the medicine. To prime the **APOKYN Pen**, set the dose by turning the dose knob to 0.1 mL. This is important so you can get rid of any air bubbles in the cartridge.



**Step 9.** Remove the inner needle shield. Remember, **do not** let the needle touch anything. With the needle pointing up, firmly push the injection button in as far as it will go and hold for at least 5 seconds. A small stream of medicine must come out of the end of the needle. If it does not, reset the dose by repeating Step 8. Repeat these steps (Steps 8-9) until a small stream of medicine comes out the end of the needle. When medicine comes out of the end of the needle, the **APOKYN Pen** is primed for injection and ready to use.

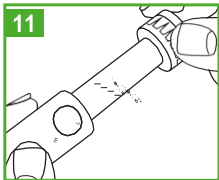
**APOKYN** medicine can cause staining to fabric and other surfaces it touches. Be careful where you prime the **APOKYN Pen**.



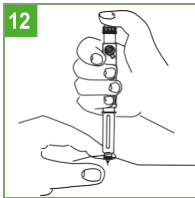


## Setting the Dose

**Step 10.** To set the dose, turn the white dose knob until the correct dose (number of mLs) is shown in the window. The dose will appear as a red number between two black lines that will line up next to the letters “mL” on the pen body. Make sure the correct number (dose) appears in the window.



**Step 11. Dose Correction.** If you turn the dose knob past your dose, **do not** dial backwards. If you dial backwards, APOKYN will be pushed through the needle and you will lose medicine. Continue to turn the dial until it is fully turned. Press the injection button fully. This will reset the dial to zero without pushing medicine out of the needle. Repeat Step 10 to redial your dose.



## Giving the Injection

**Step 12.** **APOKYN** is only for injection under the skin (subcutaneous injection).

Choose an injection site on your stomach area, upper arm or upper leg. Change the site with each injection. **Do not** inject **APOKYN** into skin that is red or sore.

Clean the site with an alcohol swab and allow to air dry. Pinch about an inch of skin and fat tissue of your injection site between your thumb and forefinger. With the other hand, insert the needle all the way into the pinched skin.

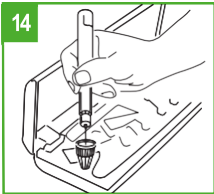
**Step 13.** Fully push the teal injection button on the **APOKYN Pen**. A clicking sound will be heard while the dose is injected. Push the injection button firmly for 5 seconds. Remove the needle from your skin. If medicine keeps dripping from the needle, keep the needle in the skin longer the next time you inject **APOKYN**.

**IMPORTANT – If you set your dose and cannot depress the teal injection button,** the cartridge is empty. Remove the pen needle and cartridge and prepare the pen as described in Steps 2-9 with a new cartridge. Set the dose and give the injection.

**If you set your dose and the injection button stops before you receive a complete dose,** note the number in the window, remove the pen needle and cartridge, and prepare the pen as described in Steps 2-9 with a new cartridge. Set the dose to the number that last appeared in the window and administer the injection. This completes the dose.

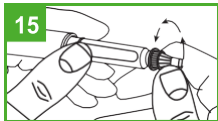
Before attempting to replace a cartridge, be sure that a needle unit is not attached to the **APOKYN Pen.**

14



## Removing the Pen Needle

**Step 14.** Carefully replace the outer needle shield. Be careful to avoid a needle-stick. Place the outer needle shield in the notch located on the far left side of your carrying case. The opening of the needle shield should be pointing up. Carefully insert the needle (attached to the pen) into the opening of the shield. **Without holding onto the shield,** push down firmly.



**Step 15.** Hold the pen by the teal cartridge holder and unscrew the pen needle from the cartridge holder. Recap the pen. **Never recap the pen with a needle attached.** Safely dispose of used pen needles in a “sharps” container. Your specialty pharmacy provider will provide you with a “sharps” container. **Do not throw used needles in a trash can.**

## Storage Information

–Store APOKYN cartridges at room temperature, 68°F to 77°F (20°C to 25°C)  
Excursions permitted between 59 to 86°F (15 to 30°C) [See USP Controlled Room Temperature]

## Proper Disposal

- ◆ Put your used needles and syringes in an FDA-cleared sharps disposal container right away after use. Do not throw away (dispose of) loose needles and syringes in your household trash.
- ◆ If you do not have an FDA-cleared sharps disposal container, you may use a household container that is:
  - made of a heavy-duty plastic
  - able to be closed with a tight-fitting, puncture-resistant lid, without sharps being able to come out
  - upright and stable during use
  - leak-resistant
  - properly labeled to warn of hazardous waste inside the container

- ◆ When your sharps disposal container is almost full, you will need to follow your community guidelines for the right way to dispose of your sharps disposal container. There may be state or local laws about how you should throw away used needles and syringes. For more information about safe sharps disposal, and for specific information about sharps disposal in the state that you live in, go to the FDA's website at: <http://www.fda.gov/safesharpsdisposal>.
- ◆ Do not dispose of your used sharps disposal container in your household trash unless your community guidelines permit this. Do not recycle your used sharps disposal container.

## Care and Storage

The **APOKYN Pen** can now be stored in its carrying case. **Never store or carry the APOKYN Pen with a pen needle attached.**

You must store and care for your pen the right way:

- ◆ Avoid exposure to dust, moisture, and cold or hot temperatures.
- ◆ Never wash the pen in water or use strong disinfectants. Only a clean, damp cloth should be used for cleaning.
- ◆ **Do not** try to repair the pen if it is damaged or if you cannot solve a problem shown in the following “Troubleshooting” section.
- ◆ **Do not** use pen for more than 1 year after the first use or after the expiration date on the carton.

**For more information, call your specialty pharmacy provider or 1-877-7APOKYN (727-6596).**

## Troubleshooting

PROBLEM	POSSIBLE CAUSE	HOW TO FIX THE PROBLEM
No medicine comes out of the pen (the dosage dial moves freely, but no click is heard).	The pen is in dose correction mode.	Push the injection button all the way in so the dial returns to zero.
The dosage dial does not return to zero during an injection.	The cartridge is empty.	Replace the cartridge as described in Steps 3-5.
	The pen needle is clogged.	Replace the pen needle as described in Steps 14 & 6-7.
The dosage dial does not turn easily.	Dust or dirt is on the pen.	Turn the dial past the highest setting on the pen. Wipe all exposed pen surfaces with a clean, damp cloth.
Pen does not close.	Cartridge is inserted incorrectly.	Remove cartridge and reload it. See Steps 3-4.

## Troubleshooting

PROBLEM	POSSIBLE CAUSE	HOW TO FIX THE PROBLEM
Injection button will not depress.	Cartridge is empty.	Replace cartridge. See Steps 3-5.
Injection button stops before a complete dose is delivered.	Not enough medication in cartridge to complete the dose.	Replace cartridge. See Steps 3-5.
Pen does not work.	Mechanical failure.	Replace pen. Call your specialty pharmacy provider or 1-877-7APOKYN (727-6596).
Dose numbers and/or white markers wear off.	Repeated use over extended period of time.	Replace pen. Call your specialty pharmacy provider or 1-877-7APOKYN (727-6596).

## Troubleshooting

PROBLEM	POSSIBLE CAUSE	HOW TO FIX THE PROBLEM
Too much force needed to depress injection button.	Defective cartridge.	Replace cartridge. See Steps 3-5.
Unable to read the dose numbers through the dose window.	Incorrect cleaning or improper handling.	Replace pen. Call your specialty pharmacy provider or 1-877-7APOKYN (727-6596).

For more information, call your specialty pharmacy provider or 1-877-7APOKYN (727-6596).

This Instructions for Use has been approved by the U.S. Food and Drug Administration.

Distributed by:

MDD US Operations, LLC, as subsidiary of Supernus Pharmaceuticals  
Rockville, MD

Revised: 06/2022

MDD US Operations is the exclusive licensee and distributor of APOKYN in the United States and Its territories.

© 2022. APOKYN is a registered trademark of BRITUSWIP.

Reference ID: 5523375

INS10001.03



**BD Medical** Pharmaceutical Systems  
1 Becton Drive  
Franklin Lakes, NJ 07417, USA

BD and BD Logo are trademarks of Becton, Dickinson and Company.  
© 2019. BD

# **APOKYN** **nxt**<sup>™</sup>

(apomorphine hydrochloride injection)

## **INSTRUCTIONS FOR USE**

**APOKYN nxt (AY-po-kin Nekst)**  
(apomorphine hydrochloride injection)  
for subcutaneous use

This Instructions for Use contains information on how to inject APOKYN nxt.

MDD US Operations, LLC, a subsidiary of Supernus Pharmaceuticals, Inc., is the exclusive licensee and distributor of APOKYN nxt in the United States and Its

Reference ID: 5523375



## **APOKYN nxt Prefilled Pen Information**

**Your new APOKYN nxt is a prefilled disposable pen that delivers multiple doses of medicine.**

**When the pen is empty or does not contain enough medicine to give the prescribed dose, throw away the entire pen and get a new pen.**

**Do not try to change the cartridge.**

## Table of Contents

<b>Table of Contents</b>	<b>2</b>
<b>APOKYN nxt™ Prefilled Pen Parts</b>	<b>3</b>
<b>Storing the APOKYN nxt™ Prefilled Pen</b>	<b>4</b>
<b>Important Information You Need to Know Before Injecting with the APOKYN nxt™ Prefilled Pen</b>	<b>5</b>
<b>Preparing to Inject APOKYN</b>	<b>7</b>
Step 1: Gather Supplies and Check	7
Pen Step 2: Select and Clean Site	9
Step 3: Attach a New Needle to Pen	10
Step 4: Remove Needle Shields	11
<b>Priming a New APOKYN nxt™ Prefilled Pen (Only Prime a New Pen)</b>	<b>13</b>
Step 5: Prime New Pen	13
<b>Injecting APOKYN nxt™</b>	<b>15</b>
Step 6: Set Dose	15
Step 7: Give Injection	16
<b>After The Injection</b>	<b>17</b>
Step 8: Remove	17
Step 9: Throw Away the Used Needle and Recap the	18
<b>Additional Needle and APOKYN nxt™ Prefilled Pen Disposal Information</b>	<b>19</b>
<b>Carton Symbol Definitions</b>	<b>20</b>
<b>Additional Information</b>	<b>21</b>
<b>Frequently Asked Questions</b>	<b>22</b>

# APOKYN nxt™ Prefilled Pen Parts

## APOKYN nxt Prefilled Pen

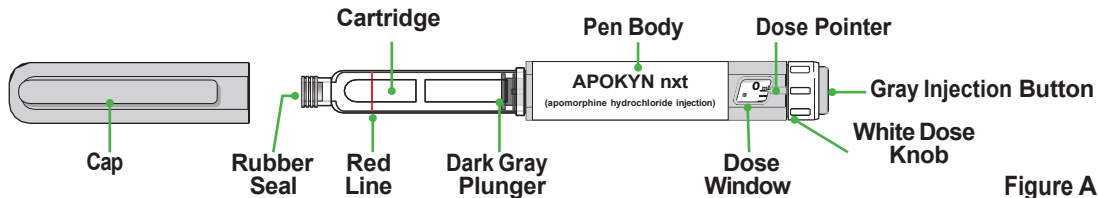


Figure A

## Pen Needle

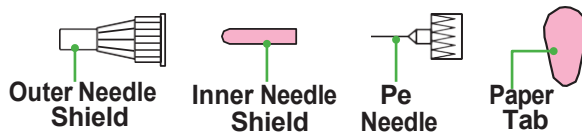


Figure B

Only use the APOKYN nxt Prefilled Pen with 29G x 1/2" pen needles. These needles are available through your specialty or local pharmacy. Refer to needle package for additional instructions for use.

## Storing the APOKYN nxt™ Prefilled Pen

- **Store APOKYN nxt Prefilled Pens at room temperature**, between 68°F to 77°F (20°C to 25°C).
- **Do not** refrigerate or freeze the APOKYN nxt Prefilled Pen.
- **Do not** store the APOKYN nxt Prefilled Pen in direct sunlight.
- **Never** store or carry the APOKYN nxt Prefilled Pen with a needle attached.
- **Always** store the pen with the pen cap on.
- **Keep** APOKYN nxt and all medicines out of the reach of children.

## Important Information You Need to Know Before Injecting with the APOKYN nxt<sup>TM</sup> Prefilled Pen

- **Read this Instructions for Use** before using the APOKYN nxt Prefilled Pen and follow each step when using the pen to make sure the correct dose is delivered.
- **Do not** share your APOKYN nxt Prefilled Pen or needles with other people. You may give another person an infection or get an infection from them. The APOKYN nxt Prefilled Pen is only for use by one person.
- The APOKYN nxt Prefilled Pen is for injection under the skin (subcutaneous injection) only.
- **Do not** inject APOKYN nxt into a vein.
- **The APOKYN nxt Prefilled Pen is disposable.** After the dark gray plunger has reached the red line on the cartridge, throw away and use a new APOKYN nxt Prefilled Pen.
- **APOKYN nxt is a prefilled, disposable pen that can deliver multiple doses of medicine.** When the pen is empty or does not contain enough medicine to give the desired dose, throw away the entire pen and get a new pen.
- **Do not** use the APOKYN nxt Prefilled Pen unless you and your caregiver have been taught the right way to use it and both of you understand all of the instructions.
- **Do not** use an APOKYN nxt Prefilled Pen if the expiration date has passed. If expired, throw it away in an FDA-cleared sharps disposal container.
- 5 **Do not** use if any part of your pen appears damaged, leaking, or broken.

- **Do not** puncture the rubber seal with anything but the specified needle.
  - **Do not** reuse pen needles. **Always** use a new needle for each injection.
  - **Always** prime a new APOKYN nxt Prefilled Pen before use. **Priming is only required** if you are using a new pen for the first time.
  - The medicine in the APOKYN nxt Prefilled Pen can cause irritation to skin and eyes. **If the medicine gets on your skin**, wash it off right away. **If the medicine gets in your eyes**, flush your eyes with cold water.
  - **Do not** let the medicine come into contact with your clothing, carpeting, or furniture as it can stain.
  - **Do not** dial the dose or try to correct a dialing error with the pen needle in the skin. You could receive the wrong dose. Remove the needle from the skin and correct the dose.
  - **Be careful when handling the needle.** Accidental needle sticks can cause serious infections.
- Do not** inject another dose of APOKYN nxt sooner than 2 hours after the last dose. Wait at least 2 hours before giving another dose of APOKYN nxt.

# Preparing to Inject APOKYN nxt™

## Step 1: Gather Supplies and Check Pen

- 1.1 Wash hands with soap and water (**Figure C**).



Figure C

- 1.2 Gather the following additional supplies (**Figure D**).



Alcohol Swabs



New Pen Needle



Sharps Disposal Container

Figure D

- 1.3 Check the expiration date on the pen label to make sure it has not passed (**Figure E**).

**Do not** use the pen if the expiration date has passed. Throw away the pen in a sharps container and use a new APOKYN nxt Prefilled Pen.

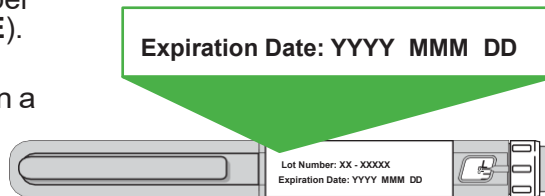


Figure E

- 1.4 Remove the pen cap by pulling it straight off the pen (**Figure F**).

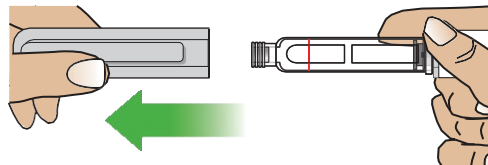


Figure F

- 1.5 Check that the medicine in the cartridge is clear and colorless (**Figure G**). **Do not** use the pen if the medicine is cloudy, has color (such as green), or contains flakes or particles. Throw away the pen in a sharps container and use a new APOKYN nxt Prefilled Pen.

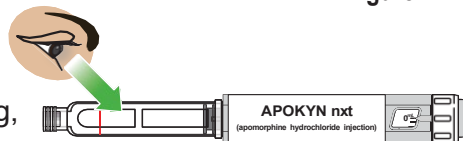


Figure G

- 1.6 Check that the pen is not damaged, leaking, or broken (**Figure G**).

**Do not** use the pen if it is damaged, leaking, or broken. Throw away the pen in a sharps container and use a new APOKYN nxt Prefilled Pen.

Dark Gray Plunger

- 1.7 Check that the cartridge has enough medicine to give a dose.

**Do not** use the pen if the dark gray plunger has reached the red line on the cartridge (**Figure H**). Throw away the pen in a sharps container and use a new APOKYN nxt Prefilled Pen.

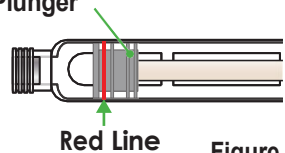


Figure H

## Step 2: Select and Clean Site

### 2.1 Choose an injection site (Figure I):

- Stomach area at least 2 inches away from belly button.
- Upper leg (thigh).
- Upper arm.

**Do not** inject APOKYN nxt into skin that is red or sore.

**Do not** inject into the same site 2 times in a row.

**Change (rotate)** the site with each injection.

**Do not** inject APOKYN nxt into a vein.

Front View

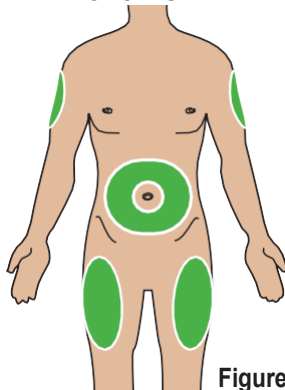


Figure I

### 2.2 Clean the injection site with an alcohol swab and allow to air dry (Figure J).

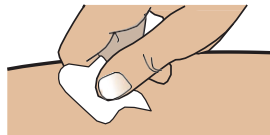


Figure J

### Step 3: Attach a New Needle to Pen

- 3.1 Clean the rubber seal of the pen with an alcohol swab (**Figure K**).

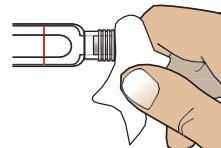


Figure K

- 3.2 Remove the paper tab from the back of the new APOKYN nxt Prefilled Pen needle (**Figure L**).  
**Do not** reuse needles. Always use a new needle for each injection.

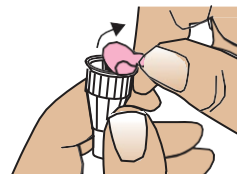


Figure L

- 3.3 To attach the needle:
- Hold the pen as shown (**Figure M**).
  - Push the capped needle straight onto the pen and screw it on by turning to the right (clockwise) just until the needle feels secure (**Figure M**).
- Do not** over-tighten the needle.

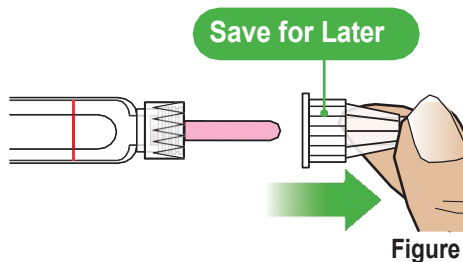


Figure M  
10

## Step 4: Remove Needle Shields

- 4.1 Pull off the outer needle shield and save it for later (**Figure N**).

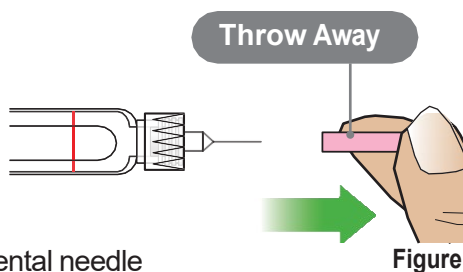
You will need the outer needle shield to remove the needle after the injection.



- 4.2 Pull off the inner needle shield and throw it away (**Figure O**).

**Do not** touch the exposed needle or allow it to come into contact with any surfaces. **Do not** use the needle if touched or dropped before an injection.

**Be careful when handling the needle.** Accidental needle sticks can cause serious infections.



# Important!

Are You Using a Brand New APOKYN nxt Prefilled Pen?

Yes

No

**If Yes, complete Step 5** on  
pages 13 and 14 then  
continue to Step 6

**If No,**  
**skip Step 5** and go to  
Step 6 on page 15

## Priming a New APOKYN nxt™ Prefilled Pen (Only Prime a New Pen)

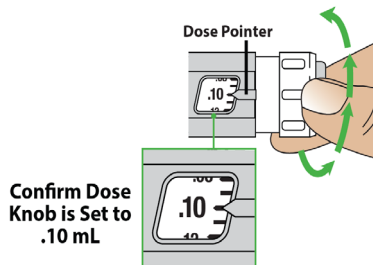
### Step 5: Prime New Pen

**Important: You must prime a new APOKYN nxt Prefilled Pen** (a pen that has not been used) following the steps below.

For an APOKYN nxt Prefilled Pen you have used before (a pen that has already been primed), skip this step and go to Step 6.

- 5.1 To prime a new APOKYN nxt Prefilled Pen, turn the white dose knob to the right (clockwise) and set it to **.10 mL** (**Figure P**).

**Do not** set the pen to your prescribed dose amount yet.  
**Always set to .10 mL for priming.**



Confirm Dose  
Knob is Set to  
.10 mL

Figure P

**5.2 Hold the pen away from you and upright** with the needle pointing straight up (**Figure Q**).

**5.3 Push in the gray injection button** as far as it will go until the dose number in the middle of the dose window returns to “0”, and hold the button in for 5 seconds (**Figure Q**).

Look to see if medicine comes out of the end of the needle (**Figure Q**).

**Important:**

- **If no medicine comes out**, repeat the priming steps above (Steps 5.1-5.3).
- **If no medicine comes out after priming 4 times**, replace the needle (See Step 3) and then prime again.
- **If medicine still does not come out after replacing the needle** and priming again, use a new APOKYN nxt Prefilled Pen.

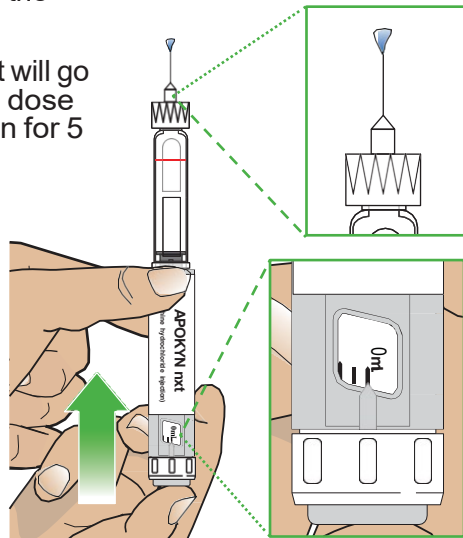


Figure Q

**Note:** If the medicine gets on your skin or eyes, wash or flush with cold water.

## Step 6: Set Dose

- 6.1 **Confirm your dose** as prescribed by your healthcare provider. (**Figure R**).
- 6.2 To set the dose, turn the white dose knob to the right (clockwise) until the correct dose is shown in the middle of the dose window (**Figure S**). The dose number should line up with the gray dose pointer on the right side of the dose window.

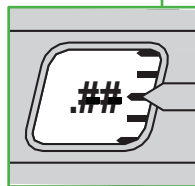
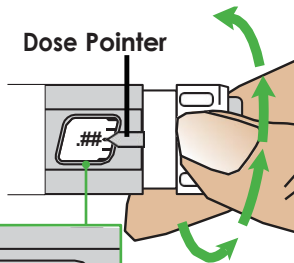
### Important:

- If you accidentally turn the white dose knob past your dose, dial backwards until the correct dose number is in the middle of the dose window.
- 

pen does not have enough medicine to give the full dose. Throw away the pen in a sharps container and use a new APOKYN nxt Prefilled Pen, starting at Step 1.

**Dose = .##mL**

Figure R



**Confirm Dose Knob is Set to Your Dose**

Figure S

## Step 7: Give Injection

7.1 While pinching your skin at the injection site with 1 hand, use the other hand to insert the needle straight into the pinched skin (**Figure T**).

7.2 To inject, press the gray injection button all the way down until it stops and the number in the middle of the dose window reads “0” (**Figure U**).

**Keep holding the pen down** with the needle in your skin and the injection button down for **5 seconds** to make sure all the medicine is injected. After the injection, remove the needle from the skin.

7.3

**Pinch Skin & Insert Needle**

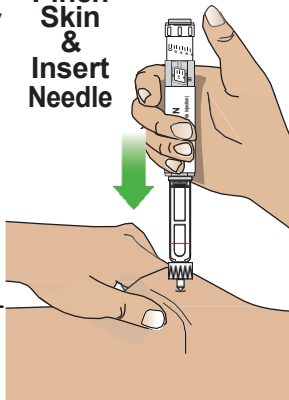


Figure T

**Press & Hold**

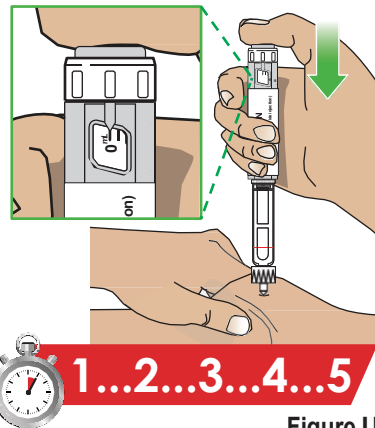
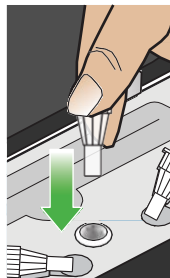


Figure U

## After The Injection

### Step 8: Remove Needle

- 8.1 To put the outer needle shield back on:
- Place the outer needle shield in the notch located in the center of your carrying case. The opening of the outer needle shield should be pointing up (**Figure V**).
  - Carefully insert the needle (attached to the pen) into the opening of the outer needle shield and push the pen down firmly (**Figure W**). This will secure the outer needle shield onto the needle.



Figure

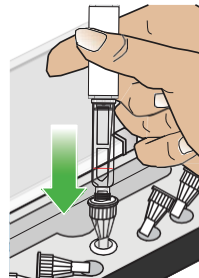
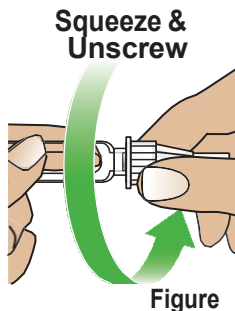
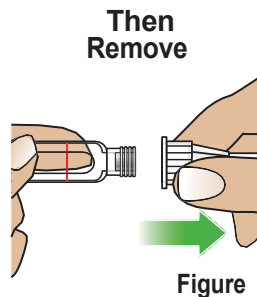


Figure W

- 8.2 To remove the needle:
- Hold the pen as shown (**Figure X**).
  - Squeeze the widest part of the outer needle shield as you unscrew the needle from the pen by turning to the left (counter-clockwise) (**Figure X**).
  - Keep turning until the covered needle easily lifts away from the pen (**Figure Y**).



Figure



Figure

## Step 9: Throw Away the Used Needle and Recap the Pen

- 9.1 Throw away (dispose of) the used needle in an FDA-cleared sharps disposal container (**Figure Z**).

**Do not** throw away the used needles in the household trash.

**Do not** reuse pen needles. **Always** use a new needle for each injection.

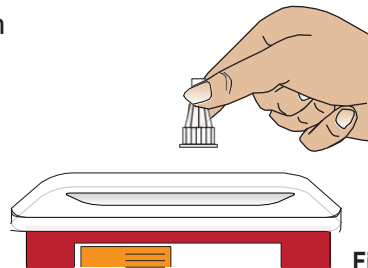


Figure Z

- 9.2 Recap the pen (**Figure AA**) and store at room temperature for later use.

**Do not** store the pen with a needle attached.

**Important: Do not** inject another dose of APOKYN nxt sooner than 2 hours after the last dose. **Wait at least 2 hours before giving another dose of APOKYN nxt.**

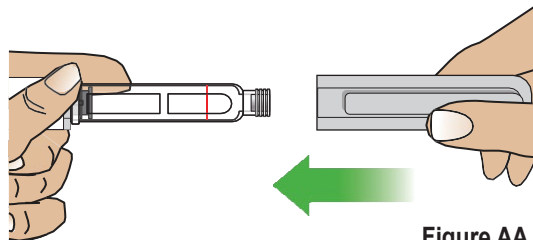


Figure AA

## Additional Needle and APOKYN nxt™ Prefilled Pen Disposal Information

If you do not have an FDA-cleared sharps disposal container, you may use a household container that is:

- made of a heavy-duty plastic,
- can be closed with a tight-fitting, puncture-resistant lid, without sharps being able to come out,
- upright and stable during use,
- leak-resistant, and
- properly labeled to warn of hazardous waste inside the container.







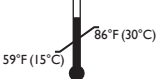
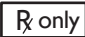
When your sharps disposal container is almost full, you will need to follow your community guidelines for the right way to dispose of your sharps disposal container. There may be state or local laws about how you should throw away used needles and syringes.

For more information about safe sharps disposal, and for specific information about sharps disposal in the state that you live in, go to the FDA's website at:

<http://www.fda.gov/safesharpsdisposal>

- **Do not** dispose of your used sharps disposal container in your household trash unless your community guidelines permit this.
- **Do not** recycle your used sharps disposal container.
- Always keep your sharps container away from children and pets.

## Carton Symbol Definitions

 <b>CAUTION!</b>	<p>Indicates that caution is necessary when operating the APOKYN nxt Prefilled Pen, that the step needs user awareness, or that user action is needed to avoid undesirable consequences.</p>
 <b>Single Use</b>	<p>Indicates the APOKYN nxt Prefilled Pen is intended for multiple-doses for a single-patients-use only. Each pen is disposable after the medicine within the cartridge is used or there is not enough medicine left for a full dose.</p>
 <b>Consult Instructions</b>	<p>Indicates the need for the user to consult the instructions for use.</p>
 <b>Do Not Use If Damaged</b>	<p>Indicates that the APOKYN nxt Prefilled Pen or needle should not be used if the package has been damaged or opened and that the user should consult the instructions for use for additional information.</p>
 <b>Expiration Date</b>	<p>Indicates the date after which the APOKYN nxt Prefilled Pen is not to be used.</p>
 <b>Lot Number</b>	<p>Indicates the Lot identification number assigned to a particular quantity or Lot of APOKYN nxt Prefilled Pens.</p>
 <b>Temperature Limits</b>	<p>Indicates the temperature limits (59°F (15°C) to 86°F (30°C)) to which the APOKYN nxt Prefilled Pen can be safely exposed.</p>
 <b>Prescription Use</b>	<p>Indicates prescription use only.</p>

## Additional Information

---

**For additional information on how to use the APOKYN nxt Prefilled Pen**  
visit [apokyn.com](http://apokyn.com) or call (1-877-727-6596)

**Distributed by:**

MDD US Operations, LLC  
Rockville, MD 20850

**This Instructions for Use has been approved by the U.S. Food and Drug  
Administration. Approved: 01/2025**

## Frequently Asked Questions

### How do I know if the pen has enough medicine left to give the full dose?

- If you cannot dial the pen to your dose, the pen does not have enough medicine to give the full dose. Throw away the pen in a sharps container and use a new APOKYN nxt Prefilled Pen starting at Step 1.

### What should I do with an empty APOKYN nxt Prefilled Pen?

- Throw away the empty pen in your FDA-cleared sharps disposal container and get a new pen.

### When should I prime an APOKYN nxt Prefilled Pen?

- Always prime a new, unused APOKYN nxt Prefilled Pen before use following the instructions in Step 5. For an APOKYN nxt Prefilled Pen you have used before (a pen that has already been primed), skip Step 5 and go to Step 6.

### How do I know if my APOKYN nxt Prefilled Pen has been successfully primed?

- **When priming, only a drop of medicine needs to come out of the tip of the needle** to confirm that the pen is primed. A stream of medicine is not needed.
- **If no medicine comes out**, repeat the priming steps.
- **If no medicine comes out after priming 4 times**, replace the needle (see Step 3) and then prime again (see Step 5).
- **If medicine still does not come out after replacing the needle** and priming again, throw away the pen and use a new APOKYN nxt Prefilled Pen.

### How do I correct an over-dialed dose?


- If you turn the dose knob past your dose, dial backwards until the correct dose number is in the middle of the dose window.
- **Do not** dial the dose or try to correct a dialing error with the pen needle in the skin. You could receive the wrong dose. Remove the needle from the skin and correct the dose.

### When can I give another dose with the APOKYN nxt prefilled pen?

- Wait at least 2 hours before giving another dose of APOKYN nxt. **Do not** inject another dose of APOKYN nxt sooner than 2 hours after the last dose.

### What if the medicine gets on skin or in the eyes?

- The medicine in the APOKYN nxt Prefilled Pen can cause irritation to skin and eyes. **If the medicine gets on your skin**, wash it off right away. **If the medicine gets in your eyes**, flush your eyes with cold water.



MDD US Operations, LLC, a subsidiary of Supernus Pharmaceuticals, Inc., is the exclusive licensee and distributor of APOKYN n<sub>xt</sub> in the United States and Its territories.

**APOKYN** n<sub>xt</sub><sup>™</sup>

(apomorphine hydrochloride injection)

Reference ID: 5523375