

NDA 21-014/SLR-012  
NDA 21-285/SLR-007  
Page 3



T2005

## Trileptal<sup>®</sup> (oxcarbazepine)

Tablets

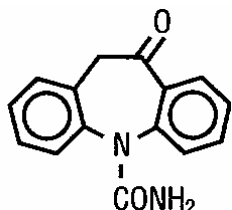
Oral Suspension

Rx only

Prescribing Information

### DESCRIPTION

Trileptal<sup>®</sup> (oxcarbazepine) is an antiepileptic drug available as 150 mg, 300 mg and 600 mg film-coated tablets for oral administration. Trileptal is also available as a 300 mg/5 mL (60 mg/mL) oral suspension. Oxcarbazepine is 10,11-Dihydro-10-oxo-5*H*-dibenz[*b,f*]azepine-5-carboxamide, and its structural formula is



Oxcarbazepine is a white to faintly orange crystalline powder. It is slightly soluble in chloroform, dichloromethane, acetone, and methanol and practically insoluble in ethanol, ether and water. Its molecular weight is 252.27.

Trileptal film-coated tablets contain the following inactive ingredients: colloidal silicon dioxide, crospovidone, hydroxypropyl methylcellulose, magnesium stearate, microcrystalline cellulose, polyethylene glycol, talc and titanium dioxide, yellow iron oxide.

Trileptal oral suspension contains the following inactive ingredients: ascorbic acid; dispersible cellulose; ethanol; macrogol stearate; methyl parahydroxybenzoate; propylene glycol; propyl parahydroxybenzoate; purified water; sodium saccharin; sorbic acid; sorbitol; yellow-plum-lemon aroma.

### CLINICAL PHARMACOLOGY

#### *Mechanism of Action*

The pharmacological activity of Trileptal<sup>®</sup> (oxcarbazepine) is primarily exerted through the 10-monohydroxy metabolite (MHD) of oxcarbazepine (see Metabolism and Excretion subsection). The precise mechanism by which oxcarbazepine and MHD exert their antiseizure effect is unknown; however, in vitro electrophysiological studies indicate that they produce blockade of voltage-sensitive

NDA 21-014/SLR-012

NDA 21-285/SLR-007

Page 4

sodium channels, resulting in stabilization of hyperexcited neural membranes, inhibition of repetitive neuronal firing, and diminution of propagation of synaptic impulses. These actions are thought to be important in the prevention of seizure spread in the intact brain. In addition, increased potassium conductance and modulation of high-voltage activated calcium channels may contribute to the anticonvulsant effects of the drug. No significant interactions of oxcarbazepine or MHD with brain neurotransmitter or modulator receptor sites have been demonstrated.

## **Pharmacodynamics**

Oxcarbazepine and its active metabolite (MHD) exhibit anticonvulsant properties in animal seizure models. They protected rodents against electrically induced tonic extension seizures and, to a lesser degree, chemically induced clonic seizures, and abolished or reduced the frequency of chronically recurring focal seizures in Rhesus monkeys with aluminum implants. No development of tolerance (i.e., attenuation of anticonvulsive activity) was observed in the maximal electroshock test when mice and rats were treated daily for 5 days and 4 weeks, respectively, with oxcarbazepine or MHD.

## **Pharmacokinetics**

Following oral administration of Trileptal tablets, oxcarbazepine is completely absorbed and extensively metabolized to its pharmacologically active 10-monohydroxy metabolite (MHD). The half-life of the parent is about 2 hours, while the half-life of MHD is about 9 hours, so that MHD is responsible for most antiepileptic activity.

Based on MHD concentrations, Trileptal tablets and suspension were shown to have similar bioavailability.

After single dose administration of Trileptal tablets to healthy male volunteers under fasted conditions, the median  $t_{max}$  was 4.5 (range 3 to 13) hours. After single dose administration of Trileptal oral suspension to healthy male volunteers under fasted conditions, the median  $t_{max}$  was 6 hours.

In a mass balance study in people, only 2% of total radioactivity in plasma was due to unchanged oxcarbazepine, with approximately 70% present as MHD, and the remainder attributable to minor metabolites.

*Effect of Food:* Food has no effect on the rate and extent of absorption of oxcarbazepine from Trileptal tablets. Although not directly studied, the oral bioavailability of the Trileptal suspension is unlikely to be affected under fed conditions. Therefore, Trileptal tablets and suspension can be taken with or without food.

Steady-state plasma concentrations of MHD are reached within 2-3 days in patients when Trileptal is given twice a day. At steady-state the pharmacokinetics of MHD are linear and show dose proportionality over the dose range of 300 to 2400 mg/day.

## **Distribution**

The apparent volume of distribution of MHD is 49L.

Approximately 40% of MHD is bound to serum proteins, predominantly to albumin. Binding is independent of the serum concentration within the therapeutically relevant range. Oxcarbazepine and MHD do not bind to alpha-1-acid glycoprotein.

NDA 21-014/SLR-012

NDA 21-285/SLR-007

Page 5

## ***Metabolism and Excretion***

Oxcarbazepine is rapidly reduced by cytosolic enzymes in the liver to its 10-monohydroxy metabolite, MHD, which is primarily responsible for the pharmacological effect of Trileptal. MHD is metabolized further by conjugation with glucuronic acid. Minor amounts (4% of the dose) are oxidized to the pharmacologically inactive 10,11-dihydroxy metabolite (DHD).

Oxcarbazepine is cleared from the body mostly in the form of metabolites which are predominantly excreted by the kidneys. More than 95% of the dose appears in the urine, with less than 1% as unchanged oxcarbazepine. Fecal excretion accounts for less than 4% of the administered dose. Approximately 80% of the dose is excreted in the urine either as glucuronides of MHD (49%) or as unchanged MHD (27%); the inactive DHD accounts for approximately 3% and conjugates of MHD and oxcarbazepine account for 13% of the dose.

## ***Special Populations***

### ***Hepatic Impairment***

The pharmacokinetics and metabolism of oxcarbazepine and MHD were evaluated in healthy volunteers and hepatically-impaired subjects after a single 900 mg oral dose. Mild-to-moderate hepatic impairment did not affect the pharmacokinetics of oxcarbazepine and MHD. No dose adjustment for Trileptal is recommended in patients with mild-to-moderate hepatic impairment. The pharmacokinetics of oxcarbazepine and MHD have not been evaluated in severe hepatic impairment.

### ***Renal Impairment***

There is a linear correlation between creatinine clearance and the renal clearance of MHD. When Trileptal is administered as a single 300 mg dose in renally impaired patients (creatinine clearance <30 mL/min), the elimination half-life of MHD is prolonged to 19 hours, with a two-fold increase in AUC. Dose adjustment for Trileptal is recommended in these patients (see PRECAUTIONS and DOSAGE AND ADMINISTRATION sections).

### ***Pediatric Use***

After a single-dose administration of 5 or 15 mg/kg of Trileptal, the dose-adjusted AUC values of MHD were 30%-40% lower in children below the age of 8 years than in children above 8 years of age. The clearance in children greater than 8 years old approaches that of adults.

### ***Geriatric Use***

Following administration of single (300 mg) and multiple (600 mg/day) doses of Trileptal to elderly volunteers (60-82 years of age), the maximum plasma concentrations and AUC values of MHD were 30%-60% higher than in younger volunteers (18-32 years of age). Comparisons of creatinine clearance in young and elderly volunteers indicate that the difference was due to age-related reductions in creatinine clearance.

### ***Gender***

No gender related pharmacokinetic differences have been observed in children, adults, or the elderly.

NDA 21-014/SLR-012

NDA 21-285/SLR-007

Page 6

### ***Race***

No specific studies have been conducted to assess what effect, if any, race may have on the disposition of oxcarbazepine.

## **CLINICAL STUDIES**

The effectiveness of Trileptal<sup>®</sup> (oxcarbazepine) as adjunctive and monotherapy for partial seizures in adults, and as adjunctive therapy in children aged 4-16 was established in 6 multicenter randomized, double-blind controlled trials.

The effectiveness of Trileptal as monotherapy for partial seizures in children aged 4-16 was determined from data obtained in the studies described, as well as by pharmacokinetic/pharmacodynamic considerations.

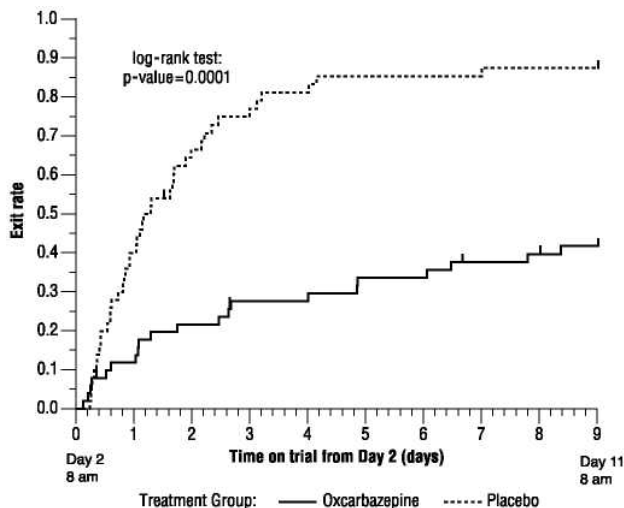
### ***Trileptal Monotherapy Trials***

Four randomized, double-blind, multicenter trials demonstrated the efficacy of Trileptal as monotherapy. Two trials compared Trileptal to placebo and two trials used a randomized withdrawal design to compare a high dose (2400 mg) with a low dose (300 mg) of Trileptal, after substituting Trileptal 2400 mg/day for one or more antiepileptic drugs (AEDs). All doses were administered on a BID schedule.

One placebo-controlled trial was conducted in 102 patients (11-62 years of age) with refractory partial seizures who had completed an inpatient evaluation for epilepsy surgery. Patients had been withdrawn from all AEDs and were required to have 2-10 partial seizures within 48 hours prior to randomization. Patients were randomized to receive either placebo or Trileptal given as 1500 mg/day on Day 1 and 2400 mg/day thereafter for an additional 9 days, or until one of the following three exit criteria occurred: 1) the occurrence of a fourth partial seizure, excluding Day 1, 2) two new-onset secondarily generalized seizures, where such seizures were not seen in the 1-year period prior to randomization, or 3) occurrence of serial seizures or status epilepticus. The primary measure of effectiveness was a between group comparison of the time to meet exit criteria. There was a statistically significant difference in favor of Trileptal (see Figure 1),  $p=0.0001$ .

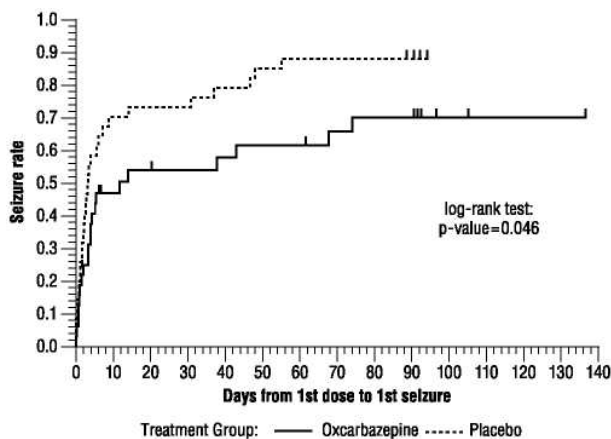
NDA 21-014/SLR-012  
NDA 21-285/SLR-007  
Page 7

**Figure 1: Kaplan-Meier estimates of exit rate by treatment group**



The second placebo-controlled trial was conducted in 67 untreated patients (8-69 years of age) with newly-diagnosed and recent-onset partial seizures. Patients were randomized to placebo or Trileptal, initiated at 300 mg BID and titrated to 1200 mg/day (given as 600 mg BID) in 6 days, followed by maintenance treatment for 84 days. The primary measure of effectiveness was a between group comparison of the time to first seizure. The difference between the two treatments was statistically significant in favor of Trileptal (see Figure 2),  $p=0.046$ .

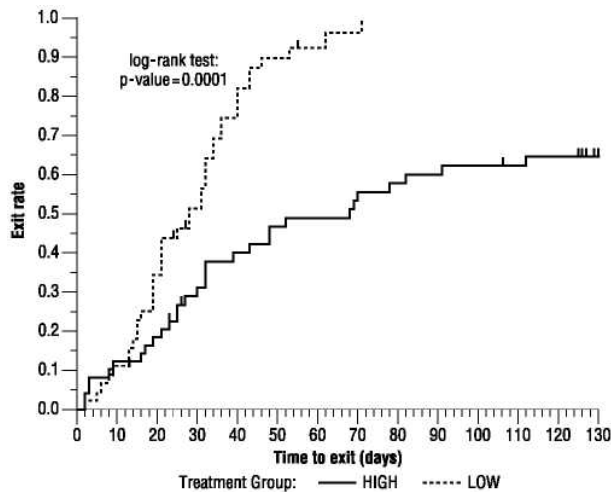
**Figure 2: Kaplan-Meier estimates of first seizure event rate by treatment group**



A third trial substituted Trileptal monotherapy at 2400 mg/day for carbamazepine in 143 patients (12-65 years of age) whose partial seizures were inadequately controlled on carbamazepine (CBZ) monotherapy at a stable dose of 800 to 1600 mg/day, and maintained this Trileptal dose for 56 days (baseline phase). Patients who were able to tolerate titration of Trileptal to 2400 mg/day during simultaneous carbamazepine withdrawal were randomly assigned to either 300 mg/day of Trileptal or 2400 mg/day Trileptal. Patients were observed for 126 days or until one of the following 4 exit criteria occurred: 1) a doubling of the 28-day seizure frequency compared to baseline, 2) a two-fold increase in the highest consecutive 2-day seizure frequency during baseline, 3) a single generalized seizure if none had occurred during baseline, or 4) a prolonged generalized seizure. The primary measure of effectiveness was a between group comparison of the time to meet exit criteria. The difference between the curves was statistically significant in favor of the Trileptal 2400 mg/day group (see Figure 3),  $p=0.0001$ .

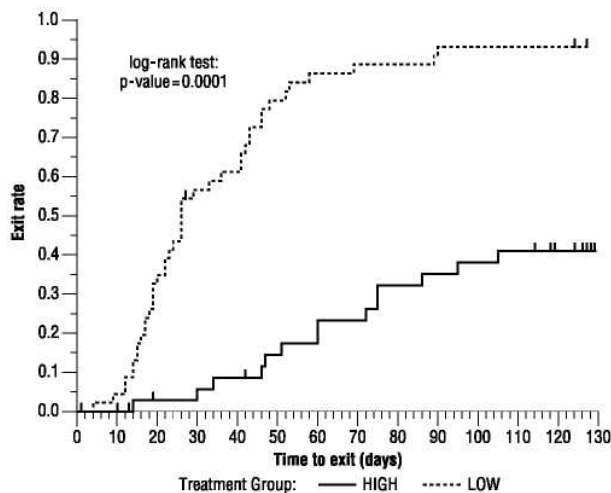
NDA 21-014/SLR-012  
NDA 21-285/SLR-007  
Page 8

**Figure 3: Kaplan-Meier estimates of exit rate by treatment group**



Another monotherapy substitution trial was conducted in 87 patients (11-66 years of age) whose seizures were inadequately controlled on 1 or 2 AEDs. Patients were randomized to either Trileptal 2400 mg/day or 300 mg/day and their standard AED regimen(s) were eliminated over the first 6 weeks of double-blind therapy. Double-blind treatment continued for another 84 days (total double-blind treatment of 126 days) or until one of the 4 exit criteria described for the previous study occurred. The primary measure of effectiveness was a between group comparison of the percentage of patients meeting exit criteria. The results were statistically significant in favor of the Trileptal 2400 mg/day group (14/34; 41.2%) compared to the Trileptal 300 mg/day group (42/45; 93.3%) ( $p < 0.0001$ ). The time to meeting one of the exit criteria was also statistically significant in favor of the Trileptal 2400 mg/day group (see Figure 4),  $p = 0.0001$ .

**Figure 4: Kaplan-Meier estimates of exit rate by treatment group**



### ***Trileptal Adjunctive Therapy Trials***

The effectiveness of Trileptal as an adjunctive therapy for partial seizures was established in two multicenter, randomized, double-blind, placebo-controlled trials, one in 692 patients (15-66 years of age) and one in 264 pediatric patients (3-17 years of age). Patients in these trials were on 1-3 concomitant AEDs. In both of the trials, patients were stabilized on optimum dosages of their concomitant AEDs during an 8-week baseline phase. Patients who experienced at least 8 (minimum of

NDA 21-014/SLR-012  
NDA 21-285/SLR-007  
Page 9

1-4 per month) partial seizures during the baseline phase were randomly assigned to placebo or to a specific dose of Trileptal in addition to their other AEDs.

In these studies, the dose was increased over a 2-week period until either the assigned dose was reached, or intolerance prevented increases. Patients then entered a 14 (pediatrics) or 24 week (adults) maintenance period.

In the adult trial, patients received fixed doses of 600, 1200 or 2400 mg/day. In the pediatric trial, patients received maintenance doses in the range of 30-46 mg/kg/day, depending on baseline weight. The primary measure of effectiveness in both trials was a between group comparison of the percentage change in partial seizure frequency in the double-blind Treatment Phase relative to Baseline Phase. This comparison was statistically significant in favor of Trileptal at all doses tested in both trials ( $p=0.0001$  for all doses for both trials). The number of patients randomized to each dose, the median baseline seizure rate, and the median percentage seizure rate reduction for each trial are shown in Table 1. It is important to note that in the high dose group in the study in adults, over 65% of patients discontinued treatment because of adverse events; only 46 (27%) of the patients in this group completed the 28-week study (see ADVERSE REACTIONS section), an outcome not seen in the monotherapy studies.

**Table 1: Summary of percentage change in partial seizure frequency from baseline for placebo-controlled adjunctive therapy trials**

Trial	Treatment Group	N	Baseline	Median %
			Median Seizure Rate*	Reduction
1 (pediatrics)	Trileptal	136	12.5	34.8 <sup>1</sup>
	Placebo	128	13.1	9.4
2 (adults)	Trileptal 2400 mg/day	174	10.0	49.9 <sup>1</sup>
	Trileptal 1200 mg/day	177	9.8	40.2 <sup>1</sup>
	Trileptal 600 mg/day	168	9.6	26.4 <sup>1</sup>
	Placebo	173	8.6	7.6

<sup>1</sup>  $p=0.0001$ ; \* = # per 28 days

Subset analyses of the antiepileptic efficacy of Trileptal with regard to gender in these trials revealed no important differences in response between men and women. Because there were very few patients over the age of 65 in controlled trials, the effect of the drug in the elderly has not been adequately assessed.

## INDICATIONS AND USAGE

Trileptal<sup>®</sup> (oxcarbazepine) is indicated for use as monotherapy or adjunctive therapy in the treatment of partial seizures in adults and children ages 4-16 with epilepsy.

## CONTRAINDICATIONS

Trileptal<sup>®</sup> (oxcarbazepine) should not be used in patients with a known hypersensitivity to oxcarbazepine or to any of its components.

NDA 21-014/SLR-012  
NDA 21-285/SLR-007  
Page 10

## **WARNINGS**

### ***Hyponatremia***

Clinically significant hyponatremia (sodium <125 mmol/L) can develop during Trileptal® (oxcarbazepine) use. In the 14 controlled epilepsy studies 2.5% of Trileptal treated patients (38/1524) had a sodium of less than 125 mmol/L at some point during treatment, compared to no such patients assigned placebo or active control (carbamazepine and phenobarbital for adjunctive and monotherapy substitution studies, and phenytoin and valproate for the monotherapy initiation studies). Clinically significant hyponatremia generally occurred during the first 3 months of treatment with Trileptal, although there were patients who first developed a serum sodium <125 mmol/L more than 1 year after initiation of therapy. Most patients who developed hyponatremia were asymptomatic but patients in the clinical trials were frequently monitored and some had their Trileptal dose reduced, discontinued, or had their fluid intake restricted for hyponatremia. Whether or not these maneuvers prevented the occurrence of more severe events is unknown. Cases of symptomatic hyponatremia have been reported during post-marketing use. In clinical trials, patients whose treatment with Trileptal was discontinued due to hyponatremia generally experienced normalization of serum sodium within a few days without additional treatment.

Measurement of serum sodium levels should be considered for patients during maintenance treatment with Trileptal, particularly if the patient is receiving other medications known to decrease serum sodium levels (for example, drugs associated with inappropriate ADH secretion) or if symptoms possibly indicating hyponatremia develop (e.g., nausea, malaise, headache, lethargy, confusion, obtundation, or increase in seizure frequency or severity).

### ***Patients with a Past History of Hypersensitivity Reaction to Carbamazepine***

Patients who have had hypersensitivity reactions to carbamazepine should be informed that approximately 25%-30% of them will experience hypersensitivity reactions with Trileptal. For this reason patients should be specifically questioned about any prior experience with carbamazepine, and patients with a history of hypersensitivity reactions to carbamazepine should ordinarily be treated with Trileptal only if the potential benefit justifies the potential risk. If signs or symptoms of hypersensitivity develop, Trileptal should be discontinued immediately (see PRECAUTIONS, Multi-organ Hypersensitivity subsection).

### ***Serious Dermatological Reactions***

Serious dermatological reactions, including Stevens-Johnson syndrome (SJS) and toxic epidermal necrolysis (TEN), have been reported in both children and adults in association with Trileptal use. The median time of onset for reported cases was 19 days. Such serious skin reactions may be life-threatening, and some patients have required hospitalization with very rare reports of fatal outcome. Recurrence of the serious skin reactions following re-challenge with Trileptal has also been reported.

The reporting rate of TEN and SJS associated with Trileptal use, which is generally accepted to be an underestimate due to underreporting, exceeds the background incidence rate estimates by a factor of 3 to 10 fold. Estimates of the background incidence rate for these serious skin reactions in the general population range between 0.5 to 6 cases per million person years. Therefore, if a patient

NDA 21-014/SLR-012

NDA 21-285/SLR-007

Page 11

develops a skin reaction while taking Trileptal, consideration should be given to discontinuing Trileptal use and prescribing another anti-epileptic medication.

### ***Withdrawal of AEDs***

As with all antiepileptic drugs, Trileptal should be withdrawn gradually to minimize the potential of increased seizure frequency.

## **PRECAUTIONS**

### ***Cognitive/Neuropsychiatric Adverse Events***

Use of Trileptal<sup>®</sup> (oxcarbazepine) has been associated with central nervous system related adverse events. The most significant of these can be classified into three general categories: 1) cognitive symptoms including psychomotor slowing, difficulty with concentration, and speech or language problems, 2) somnolence or fatigue, and 3) coordination abnormalities, including ataxia and gait disturbances.

In one, large, fixed dose study, Trileptal was added to existing AED therapy (up to three concomitant AEDs). By protocol, the dosage of the concomitant AEDs could not be reduced as Trileptal was added, reduction in Trileptal dosage was not allowed if intolerance developed, and patients were discontinued if unable to tolerate their highest target maintenance doses. In this trial, 65% of patients were discontinued because they could not tolerate the 2400 mg/day dose of Trileptal on top of existing AEDs. The adverse events seen in this study were primarily CNS related and the risk for discontinuation was dose related.

In this trial, 7.1% of oxcarbazepine-treated patients and 4% of placebo-treated patients experienced a cognitive adverse event. The risk of discontinuation for these events was about 6.5 times greater on oxcarbazepine than on placebo. In addition, 26% of oxcarbazepine-treated patients and 12% of placebo-treated patients experienced somnolence. The risk of discontinuation for somnolence was about 10 times greater on oxcarbazepine than on placebo. Finally, 28.7% of oxcarbazepine-treated patients and 6.4% of placebo-treated patients experienced ataxia or gait disturbances. The risk for discontinuation for these events was about 7 times greater on oxcarbazepine than on placebo.

In a single placebo-controlled monotherapy trial evaluating 2400 mg/day of Trileptal, no patients in either treatment group discontinued double-blind treatment because of cognitive adverse events, somnolence, ataxia, or gait disturbance.

In the two dose-controlled conversion to monotherapy trials comparing 2400 mg/day and 300 mg/day Trileptal, 1.1% of patients in the 2400 mg/day group discontinued double-blind treatment because of somnolence or cognitive adverse events compared to 0% in the 300 mg/day group. In these trials, no patients discontinued because of ataxia or gait disturbances in either treatment group.

### ***Multi-organ Hypersensitivity***

Multi-organ hypersensitivity reactions have occurred in close temporal association (median time to detection 13 days: range 4-60) to the initiation of Trileptal therapy in adult and pediatric patients. Although there have been a limited number of reports, many of these cases resulted in hospitalization and some were considered life threatening. Signs and symptoms of this disorder were diverse; however, patients typically, although not exclusively, presented with fever and rash associated with

NDA 21-014/SLR-012

NDA 21-285/SLR-007

Page 12

other organ system involvement. Other associated manifestations included lymphadenopathy, hepatitis, liver function test abnormalities, hematological abnormalities (e.g., eosinophilia, thrombocytopenia, neutropenia), pruritis, nephritis, oliguria, hepato-renal syndrome, arthralgia and asthenia. Because the disorder is variable in its expression, other organ system symptoms and signs, not noted here, may occur. If this reaction is suspected, Trileptal should be discontinued and an alternative treatment started. Although there are no case reports to indicate cross sensitivity with other drugs that produce this syndrome, the experience amongst drugs associated with multi-organ hypersensitivity would indicate this to be a possibility (see WARNINGS, Patients with a Past History of Hypersensitivity Reaction to Carbamazepine subsection).

### **Information for Patients**

Patients who have exhibited hypersensitivity reactions to carbamazepine should be informed that approximately 25%-30% of these patients may experience hypersensitivity reactions with Trileptal. Patients should be advised that if they experience a hypersensitivity reaction while taking Trileptal they should consult with their physician immediately (see WARNINGS, Patients with a Past History of Hypersensitivity Reaction to Carbamazepine subsection).

Patients should be advised that serious skin reactions have been reported in association with Trileptal. In the event a skin reaction should occur while taking Trileptal patients should consult with their physician immediately (see WARNINGS, Serious Dermatological Reactions subsection).

Patients should be instructed that a fever associated with other organ system involvement (rash, lymphadenopathy, etc.) may be drug related and should be reported to the physician immediately (see PRECAUTIONS, Multi-organ Hypersensitivity subsection).

Female patients of childbearing age should be warned that the concurrent use of Trileptal with hormonal contraceptives may render this method of contraception less effective (see Drug Interactions subsection). Additional non-hormonal forms of contraception are recommended when using Trileptal.

Caution should be exercised if alcohol is taken in combination with Trileptal therapy, due to a possible additive sedative effect.

Patients should be advised that Trileptal may cause dizziness and somnolence. Accordingly, patients should be advised not to drive or operate machinery until they have gained sufficient experience on Trileptal to gauge whether it adversely affects their ability to drive or operate machinery.

### **Laboratory Tests**

Serum sodium levels below 125 mmol/L have been observed in patients treated with Trileptal (see WARNINGS section). Experience from clinical trials indicates that serum sodium levels return toward normal when the Trileptal dosage is reduced or discontinued, or when the patient was treated conservatively (e.g., fluid restriction).

Laboratory data from clinical trials suggest that Trileptal use was associated with decreases in T<sub>4</sub>, without changes in T<sub>3</sub> or TSH.

### **Drug Interactions**

Oxcarbazepine can inhibit CYP2C19 and induce CYP3A4/5 with potentially important effects on plasma concentrations of other drugs. In addition, several AEDs that are cytochrome P450 inducers can decrease plasma concentrations of oxcarbazepine and MHD.

NDA 21-014/SLR-012  
NDA 21-285/SLR-007  
Page 13

Oxcarbazepine was evaluated in human liver microsomes to determine its capacity to inhibit the major cytochrome P450 enzymes responsible for the metabolism of other drugs. Results demonstrate that oxcarbazepine and its pharmacologically active 10-monohydroxy metabolite (MHD) have little or no capacity to function as inhibitors for most of the human cytochrome P450 enzymes evaluated (CYP1A2, CYP2A6, CYP2C9, CYP2D6, CYP2E1, CYP4A9 and CYP4A11) with the exception of CYP2C19 and CYP3A4/5. Although inhibition of CYP3A4/5 by oxcarbazepine and MHD did occur at high concentrations, it is not likely to be of clinical significance. The inhibition of CYP2C19 by oxcarbazepine and MHD, however, is clinically relevant (see below).

In vitro, the UDP-glucuronyl transferase level was increased, indicating induction of this enzyme. Increases of 22% with MHD and 47% with oxcarbazepine were observed. As MHD, the predominant plasma substrate, is only a weak inducer of UDP-glucuronyl transferase, it is unlikely to have an effect on drugs that are mainly eliminated by conjugation through UDP-glucuronyl transferase (e.g., valproic acid, lamotrigine).

In addition, oxcarbazepine and MHD induce a subgroup of the cytochrome P450 3A family (CYP3A4 and CYP3A5) responsible for the metabolism of dihydropyridine calcium antagonists and oral contraceptives, resulting in a lower plasma concentration of these drugs.

As binding of MHD to plasma proteins is low (40%), clinically significant interactions with other drugs through competition for protein binding sites are unlikely.

### **Antiepileptic Drugs**

Potential interactions between Trileptal and other AEDs were assessed in clinical studies. The effect of these interactions on mean AUCs and C<sub>min</sub> are summarized in Table 2.

**Table 2: Summary of AED interactions with Trileptal®**

<b>AED Coadministered</b>	<b>Dose of AED (mg/day)</b>	<b>Trileptal dose (mg/day)</b>	<b>Influence of Trileptal on AED Concentration (Mean change, 90% Confidence Interval)</b>	<b>Influence of AED on MHD Concentration (Mean change, 90% Confidence Interval)</b>
Carbamazepine	400-2000	900	nc <sup>1</sup>	40% decrease [CI: 17% decrease, 57% decrease]
Phenobarbital	100-150	600-1800	14% increase [CI: 2% increase, 24% increase]	25% decrease [CI: 12% decrease, 51% decrease]
Phenytoin	250-500	600-1800 >1200-2400	nc <sup>1,2</sup> up to 40% increase <sup>3</sup> [CI: 12% increase, 60% increase]	30% decrease [CI: 3% decrease, 48% decrease]
Valproic acid	400-2800	600-1800	nc <sup>1</sup>	18% decrease [CI: 13% decrease, 40% decrease]

<sup>1</sup> nc denotes a mean change of less than 10%

<sup>2</sup> Pediatrics

<sup>3</sup> Mean increase in adults at high Trileptal doses

NDA 21-014/SLR-012

NDA 21-285/SLR-007

Page 14

In vivo, the plasma levels of phenytoin increased by up to 40% when Trileptal was given at doses above 1200 mg/day. Therefore, when using doses of Trileptal greater than 1200 mg/day during adjunctive therapy, a decrease in the dose of phenytoin may be required. The increase of phenobarbital level, however, is small (15%) when given with Trileptal.

Strong inducers of cytochrome P450 enzymes (i.e., carbamazepine, phenytoin and phenobarbital) have been shown to decrease the plasma levels of MHD (29%-40%).

No autoinduction has been observed with Trileptal.

### ***Hormonal Contraceptives***

Coadministration of Trileptal with an oral contraceptive has been shown to influence the plasma concentrations of the two hormonal components, ethinylestradiol (EE) and levonorgestrel (LNG). The mean AUC values of EE were decreased by 48% [90% CI: 22-65] in one study and 52% [90% CI: 38-52] in another study. The mean AUC values of LNG were decreased by 32% [90% CI: 20-45] in one study and 52% [90% CI: 42-52] in another study. Therefore, concurrent use of Trileptal with hormonal contraceptives may render these contraceptives less effective (see Drug Interactions subsection). Studies with other oral or implant contraceptives have not been conducted.

### ***Calcium Antagonists***

After repeated coadministration of Trileptal, the AUC of felodipine was lowered by 28% [90% CI: 20-33].

Verapamil produced a decrease of 20% [90% CI: 18-27] of the plasma levels of MHD.

### ***Other Drug Interactions***

Cimetidine, erythromycin and dextropropoxyphene had no effect on the pharmacokinetics of MHD. Results with warfarin show no evidence of interaction with either single or repeated doses of Trileptal.

### ***Drug/Laboratory Test Interactions***

There are no known interactions of Trileptal with commonly used laboratory tests.

### ***Carcinogenesis/Mutagenesis/Impairment of Fertility***

In 2-year carcinogenicity studies, oxcarbazepine was administered in the diet at doses of up to 100 mg/kg/day to mice and by gavage at doses of up to 250 mg/kg to rats, and the pharmacologically active 10-hydroxy metabolite (MHD) was administered orally at doses of up to 600 mg/kg/day to rats. In mice, a dose-related increase in the incidence of hepatocellular adenomas was observed at oxcarbazepine doses  $\geq 70$  mg/kg/day or approximately 0.1 times the maximum recommended human dose [MRHD] on a  $\text{mg}/\text{m}^2$  basis. In rats, the incidence of hepatocellular carcinomas was increased in females treated with oxcarbazepine at doses  $\geq 25$  mg/kg/day (0.1 times the MRHD on a  $\text{mg}/\text{m}^2$  basis), and incidences of hepatocellular adenomas and/or carcinomas were increased in males and females treated with MHD at doses of 600 mg/kg/day (2.4 times the MRHD on a  $\text{mg}/\text{m}^2$  basis) and  $\geq 250$  mg/kg/day (equivalent to the MRHD on a  $\text{mg}/\text{m}^2$  basis), respectively. There was an increase in the incidence of benign testicular interstitial cell tumors in rats at 250 mg oxcarbazepine/kg/day and at  $\geq 250$  mg MHD/kg/day, and an increase in the incidence of granular cell tumors in the cervix and vagina in rats at 600 mg MHD/kg/day.

NDA 21-014/SLR-012

NDA 21-285/SLR-007

Page 15

Oxcarbazepine increased mutation frequencies in the Ames test in vitro in the absence of metabolic activation in one of five bacterial strains. Both oxcarbazepine and MHD produced increases in chromosomal aberrations and polyploidy in the Chinese hamster ovary assay in vitro in the absence of metabolic activation. MHD was negative in the Ames test, and no mutagenic or clastogenic activity was found with either oxcarbazepine or MHD in V79 Chinese hamster cells in vitro. Oxcarbazepine and MHD were both negative for clastogenic or aneugenic effects (micronucleus formation) in an in vivo rat bone marrow assay.

In a fertility study in which rats were administered MHD (50, 150, or 450 mg/kg) orally prior to and during mating and early gestation, estrous cyclicity was disrupted and numbers of corpora lutea, implantations, and live embryos were reduced in females receiving the highest dose (approximately 2 times the MRHD on a  $\text{mg}/\text{m}^2$  basis).

### ***Pregnancy Category C***

Increased incidences of fetal structural abnormalities and other manifestations of developmental toxicity (embryo lethality, growth retardation) were observed in the offspring of animals treated with either oxcarbazepine or its active 10-hydroxy metabolite (MHD) during pregnancy at doses similar to the maximum recommended human dose.

When pregnant rats were given oxcarbazepine (30, 300, or 1000 mg/kg) orally throughout the period of organogenesis, increased incidences of fetal malformations (craniofacial, cardiovascular, and skeletal) and variations were observed at the intermediate and high doses (approximately 1.2 and 4 times, respectively, the maximum recommended human dose [MRHD] on a  $\text{mg}/\text{m}^2$  basis). Increased embryofetal death and decreased fetal body weights were seen at the high dose. Doses  $\geq 300$  mg/kg were also maternally toxic (decreased body weight gain, clinical signs), but there is no evidence to suggest that teratogenicity was secondary to the maternal effects.

In a study in which pregnant rabbits were orally administered MHD (20, 100, or 200 mg/kg) during organogenesis, embryofetal mortality was increased at the highest dose (1.5 times the MRHD on a  $\text{mg}/\text{m}^2$  basis). This dose produced only minimal maternal toxicity.

In a study in which female rats were dosed orally with oxcarbazepine (25, 50, or 150 mg/kg) during the latter part of gestation and throughout the lactation period, a persistent reduction in body weights and altered behavior (decreased activity) were observed in offspring exposed to the highest dose (0.6 times the MRHD on a  $\text{mg}/\text{m}^2$  basis). Oral administration of MHD (25, 75, or 250 mg/kg) to rats during gestation and lactation resulted in a persistent reduction in offspring weights at the highest dose (equivalent to the MRHD on a  $\text{mg}/\text{m}^2$  basis).

There are no adequate and well-controlled clinical studies of Trileptal in pregnant women; however, Trileptal is closely related structurally to carbamazepine, which is considered to be teratogenic in humans. Given this fact, and the results of the animal studies described, it is likely that Trileptal is a human teratogen. Trileptal should be used during pregnancy only if the potential benefit justifies the potential risk to the fetus.

### ***Labor and Delivery***

The effect of Trileptal on labor and delivery in humans has not been evaluated.

NDA 21-014/SLR-012

NDA 21-285/SLR-007

Page 16

## ***Nursing Mothers***

Oxcarbazepine and its active metabolite (MHD) are excreted in human breast milk. A milk-to-plasma concentration ratio of 0.5 was found for both. Because of the potential for serious adverse reactions to Trileptal in nursing infants, a decision should be made about whether to discontinue nursing or to discontinue the drug in nursing women, taking into account the importance of the drug to the mother.

## ***Patients with Renal Impairment***

In renally-impaired patients (creatinine clearance <30 mL/min), the elimination half-life of MHD is prolonged with a corresponding two-fold increase in AUC (see CLINICAL PHARMACOLOGY, Pharmacokinetics subsection). Trileptal therapy should be initiated at one-half the usual starting dose and increased, if necessary, at a slower than usual rate until the desired clinical response is achieved.

## ***Pediatric Use***

Trileptal is indicated for use as adjunctive therapy or monotherapy for partial seizures in patients aged 4-16 years old. Trileptal has been given to about 623 patients between the ages of 3-17 in controlled clinical trials (185 treated as monotherapy) and about 615 patients between the ages of 3-17 in other trials. (See ADVERSE REACTIONS section for a description of the adverse events associated with Trileptal use in this population.)

## ***Geriatric Use***

There were 52 patients over age 65 in controlled clinical trials and 565 patients over the age of 65 in other trials. Following administration of single (300 mg) and multiple (600 mg/day) doses of Trileptal in elderly volunteers (60-82 years of age), the maximum plasma concentrations and AUC values of MHD were 30%-60% higher than in younger volunteers (18-32 years of age). Comparisons of creatinine clearance in young and elderly volunteers indicate that the difference was due to age-related reductions in creatinine clearance.

## **ADVERSE REACTIONS**

### ***Most Common Adverse Events in All Clinical Studies***

***Adjunctive Therapy/Monotherapy in Adults Previously Treated with other AEDs:*** The most commonly observed ( $\geq 5\%$ ) adverse experiences seen in association with Trileptal<sup>®</sup> (oxcarbazepine) and substantially more frequent than in placebo-treated patients were: Dizziness, somnolence, diplopia, fatigue, nausea, vomiting, ataxia, abnormal vision, abdominal pain, tremor, dyspepsia, abnormal gait.

Approximately 23% of these 1,537 adult patients discontinued treatment because of an adverse experience. The adverse experiences most commonly associated with discontinuation were: Dizziness (6.4%), diplopia (5.9%), ataxia (5.2%), vomiting (5.1%), nausea (4.9%), somnolence (3.8%), headache (2.9%), fatigue (2.1%), abnormal vision (2.1%), tremor (1.8%), abnormal gait (1.7%), rash (1.4%), hyponatremia (1.0%).

***Monotherapy in Adults not Previously Treated with other AEDs:*** The most commonly observed ( $\geq 5\%$ ) adverse experiences seen in association with Trileptal in these patients were similar to those in previously treated patients.

NDA 21-014/SLR-012

NDA 21-285/SLR-007

Page 17

Approximately 9% of these 295 adult patients discontinued treatment because of an adverse experience. The adverse experiences most commonly associated with discontinuation were: Dizziness (1.7%), nausea (1.7%), rash (1.7%), headache (1.4%).

***Adjunctive Therapy/Monotherapy in Pediatric Patients Previously Treated with other AEDs:*** The most commonly observed ( $\geq 5\%$ ) adverse experiences seen in association with Trileptal in these patients were similar to those seen in adults.

Approximately 11% of these 456 pediatric patients discontinued treatment because of an adverse experience. The adverse experiences most commonly associated with discontinuation were: Somnolence (2.4%), vomiting (2.0%), ataxia (1.8%), diplopia (1.3%), dizziness (1.3%), fatigue (1.1%), nystagmus (1.1%).

***Monotherapy in Pediatric Patients not Previously Treated with other AEDs:*** The most commonly observed ( $\geq 5\%$ ) adverse experiences seen in association with Trileptal in these patients were similar to those in adults.

Approximately 9.2% of 152 pediatric patients discontinued treatment because of an adverse experience. The adverse experiences most commonly associated ( $\geq 1\%$ ) with discontinuation were rash (5.3%) and maculopapular rash (1.3%).

***Incidence in Controlled Clinical Studies:*** The prescriber should be aware that the figures in Tables 3, 4, 5 and 6 cannot be used to predict the frequency of adverse experiences in the course of usual medical practice where patient characteristics and other factors may differ from those prevailing during clinical studies. Similarly, the cited frequencies cannot be directly compared with figures obtained from other clinical investigations involving different treatments, uses, or investigators. An inspection of these frequencies, however, does provide the prescriber with one basis to estimate the relative contribution of drug and nondrug factors to the adverse event incidences in the population studied.

***Controlled Clinical Studies of Adjunctive Therapy/Monotherapy in Adults Previously Treated with other AEDs:*** Table 3 lists treatment-emergent signs and symptoms that occurred in at least 2% of adult patients with epilepsy treated with Trileptal or placebo as adjunctive treatment and were numerically more common in the patients treated with any dose of Trileptal. Table 4 lists treatment-emergent signs and symptoms in patients converted from other AEDs to either high dose Trileptal or low dose (300 mg) Trileptal. Note that in some of these monotherapy studies patients who dropped out during a preliminary tolerability phase are not included in the tables.

NDA 21-014/SLR-012  
NDA 21-285/SLR-007  
Page 18

**Table 3: Treatment-Emergent Adverse Event Incidence in a Controlled Clinical Study of Adjunctive Therapy in Adults (Events in at least 2% of patients treated with 2400 mg/day of Trileptal® and numerically more frequent than in the placebo group)**

Body System/ Adverse Event	Oxcarbazepine Dosage (mg/day)			
	OXC 600	OXC 1200	OXC 2400	Placebo
	N=163 %	N=171 %	N=126 %	N=166 %
<b>Body as a Whole</b>				
Fatigue	15	12	15	7
Asthenia	6	3	6	5
Edema Legs	2	1	2	1
Weight Increase	1	2	2	1
Feeling Abnormal	0	1	2	0
<b>Cardiovascular System</b>				
Hypotension	0	1	2	0
<b>Digestive System</b>				
Nausea	15	25	29	10
Vomiting	13	25	36	5
Pain Abdominal	10	13	11	5
Diarrhea	5	6	7	6
Dyspepsia	5	5	6	2
Constipation	2	2	6	4
Gastritis	2	1	2	1
<b>Metabolic and Nutritional Disorders</b>				
Hyponatremia	3	1	2	1
<b>Musculoskeletal System</b>				
Muscle Weakness	1	2	2	0
Sprains and Strains	0	2	2	1
<b>Nervous System</b>				
Headache	32	28	26	23
Dizziness	26	32	49	13
Somnolence	20	28	36	12
Ataxia	9	17	31	5
Nystagmus	7	20	26	5
Gait Abnormal	5	10	17	1
Insomnia	4	2	3	1
Tremor	3	8	16	5
Nervousness	2	4	2	1
Agitation	1	1	2	1
Coordination Abnormal	1	3	2	1
EEG Abnormal	0	0	2	0
Speech Disorder	1	1	3	0
Confusion	1	1	2	1
Cranial Injury NOS	1	0	2	1
Dysmetria	1	2	3	0
Thinking Abnormal	0	2	4	0
<b>Respiratory System</b>				
Rhinitis	2	4	5	4
<b>Skin and Appendages</b>				
Acne	1	2	2	0
<b>Special Senses</b>				
Diplopia	14	30	40	5
Vertigo	6	12	15	2
Vision Abnormal	6	14	13	4
Accommodation Abnormal	0	0	2	0

NDA 21-014/SLR-012  
NDA 21-285/SLR-007  
Page 19

**Table 4: Treatment-Emergent Adverse Event Incidence in Controlled Clinical Studies of Monotherapy in Adults Previously Treated with Other AEDs (Events in at least 2% of patients treated with 2400 mg/day of Trileptal® and numerically more frequent than in the low dose control group)**

Body System/ Adverse Event	Oxcarbazepine Dosage (mg/day)	
	2400 N=86 %	300 N=86 %
<b>Body as a Whole</b>		
Fatigue	21	5
Fever	3	0
Allergy	2	0
Edema Generalized	2	1
Pain Chest	2	0
<b>Digestive System</b>		
Nausea	22	7
Vomiting	15	5
Diarrhea	7	5
Dyspepsia	6	1
Anorexia	5	3
Pain Abdominal	5	3
Mouth Dry	3	0
Hemorrhage Rectum	2	0
Toothache	2	1
<b>Hemic and Lymphatic System</b>		
Lymphadenopathy	2	0
<b>Infections and Infestations</b>		
Infection Viral	7	5
Infection	2	0
<b>Metabolic and Nutritional Disorders</b>		
Hyponatremia	5	0
Thirst	2	0
<b>Nervous System</b>		
Headache	31	15
Dizziness	28	8
Somnolence	19	5
Anxiety	7	5
Ataxia	7	1
Confusion	7	0
Nervousness	7	0
Insomnia	6	3
Tremor	6	3
Amnesia	5	1
Convulsions		
Aggravated	5	2
Emotional Lability	3	2
Hypoesthesia	3	1
Coordination Abnormal	2	1
Nystagmus	2	0
Speech Disorder	2	0
<b>Respiratory System</b>		
Upper Respiratory Tract Infection	10	5
Coughing	5	0
Bronchitis	3	0
Pharyngitis	3	0
<b>Skin and Appendages</b>		
Hot Flushes	2	1
Purpura	2	0
<b>Special Senses</b>		
Vision Abnormal	14	2
Diplopia	12	1

NDA 21-014/SLR-012  
NDA 21-285/SLR-007  
Page 20

Taste Perversion	5	0
Vertigo	3	0
Earache	2	1
Ear Infection NOS	2	0
<b>Urogenital and Reproductive System</b>		
Urinary Tract Infection	5	1
Micturition Frequency	2	1
Vaginitis	2	0

**Controlled Clinical Study of Monotherapy in Adults not Previously Treated with other AEDs:** Table 5 lists treatment-emergent signs and symptoms in a controlled clinical study of monotherapy in adults not previously treated with other AEDs that occurred in at least 2% of adult patients with epilepsy treated with Trileptal or placebo and were numerically more common in the patients treated with Trileptal.

**Table 5: Treatment-Emergent Adverse Event Incidence in a Controlled Clinical Study of Monotherapy in Adults not Previously Treated with Other AEDs (Events in at least 2% of patients treated with Trileptal® and numerically more frequent than in the placebo group)**

Body System/ Adverse Event	Oxcarbazepine N=55 %	Placebo N=49 %
<b>Body as a Whole</b>		
Falling Down NOS	4	0
<b>Digestive System</b>		
Nausea	16	12
Diarrhea	7	2
Vomiting	7	6
Constipation	5	0
Dyspepsia	5	4
<b>Musculoskeletal System</b>		
Pain Back	4	2
<b>Nervous System</b>		
Dizziness	22	6
Headache	13	10
Ataxia	5	0
Nervousness	5	2
Amnesia	4	2
Coordination Abnormal	4	2
Tremor	4	0
<b>Respiratory System</b>		
Upper Respiratory Tract Infection	7	0
Epistaxis	4	0
Infection Chest	4	0
Sinusitis	4	2
<b>Skin and Appendages</b>		
Rash	4	2
<b>Special Senses</b>		
Vision Abnormal	4	0

**Controlled Clinical Studies of Adjunctive Therapy/Monotherapy in Pediatric Patients Previously Treated with other AEDs:** Table 6 lists treatment-emergent signs and symptoms that occurred in at least 2% of pediatric patients with epilepsy treated with Trileptal or placebo as adjunctive treatment and were numerically more common in the patients treated with Trileptal.

**Table 6: Treatment-Emergent Adverse Event Incidence in Controlled Clinical Studies of Adjunctive Therapy/Monotherapy in Pediatric Patients Previously Treated with Other AEDs (Events in at least 2% of patients treated with Trileptal® and numerically more frequent than in the placebo group)**

NDA 21-014/SLR-012  
NDA 21-285/SLR-007  
Page 21

Body System/ Adverse Event	Oxcarbazepine N=171 %	Placebo N=139 %
<b>Body as a Whole</b>		
Fatigue	13	9
Allergy	2	0
Asthenia	2	1
<b>Digestive System</b>		
Vomiting	33	14
Nausea	19	5
Constipation	4	1
Dyspepsia	2	0
<b>Nervous System</b>		
Headache	31	19
Somnolence	31	13
Dizziness	28	8
Ataxia	13	4
Nystagmus	9	1
Emotional Lability	8	4
Gait Abnormal	8	3
Tremor	6	4
Speech Disorder	3	1
Concentration Impaired	2	1
Convulsions	2	1
Muscle Contractions Involuntary	2	1
<b>Respiratory System</b>		
Rhinitis	10	9
Pneumonia	2	1
<b>Skin and Appendages</b>		
Bruising	4	2
Sweating Increased	3	0
<b>Special Senses</b>		
Diplopia	17	1
Vision Abnormal	13	1
Vertigo	2	0

### ***Other Events Observed in Association with the Administration of Trileptal***

In the paragraphs that follow, the adverse events other than those in the preceding tables or text, that occurred in a total of 565 children and 1,574 adults exposed to Trileptal and that are reasonably likely to be related to drug use are presented. Events common in the population, events reflecting chronic illness and events likely to reflect concomitant illness are omitted particularly if minor. They are listed in order of decreasing frequency. Because the reports cite events observed in open label and uncontrolled trials, the role of Trileptal in their causation cannot be reliably determined.

**Body as a Whole:** Fever, malaise, pain chest precordial, rigors, weight decrease.

**Cardiovascular System:** Bradycardia, cardiac failure, cerebral hemorrhage, hypertension, hypotension postural, palpitation, syncope, tachycardia.

**Digestive System:** Appetite increased, blood in stool, cholelithiasis, colitis, duodenal ulcer, dysphagia, enteritis, eructation, esophagitis, flatulence, gastric ulcer, gingival bleeding, gum hyperplasia, hematemesis, hemorrhage rectum, hemorrhoids, hiccup, mouth dry, pain biliary, pain right hypochondrium, retching, sialoadenitis, stomatitis, stomatitis ulcerative.

**Hemic and Lymphatic System:** Leukopenia, thrombocytopenia.

NDA 21-014/SLR-012

NDA 21-285/SLR-007

Page 22

**Laboratory Abnormality:** Gamma-GT increased, hyperglycemia, hypocalcemia, hypoglycemia, hypokalemia, liver enzymes elevated, serum transaminase increased.

**Musculoskeletal System:** Hypertonia muscle.

**Nervous System:** Aggressive reaction, amnesia, anguish, anxiety, apathy, aphasia, aura, convulsions aggravated, delirium, delusion, depressed level of consciousness, dysphonia, dystonia, emotional lability, euphoria, extrapyramidal disorder, feeling drunk, hemiplegia, hyperkinesia, hyperreflexia, hypoesthesia, hypokinesia, hyporeflexia, hypotonia, hysteria, libido decreased, libido increased, manic reaction, migraine, muscle contractions involuntary, nervousness, neuralgia, oculoerythric crisis, panic disorder, paralysis, paroniria, personality disorder, psychosis, ptosis, stupor, tetany.

**Respiratory System:** Asthma, dyspnea, epistaxis, laryngismus, pleurisy.

**Skin and Appendages:** Acne, alopecia, angioedema, bruising, dermatitis contact, eczema, facial rash, flushing, folliculitis, heat rash, hot flushes, photosensitivity reaction, pruritus genital, psoriasis, purpura, rash erythematous, rash maculopapular, vitiligo, urticaria.

**Special Senses:** Accommodation abnormal, cataract, conjunctival hemorrhage, edema eye, hemianopia, mydriasis, otitis externa, photophobia, scotoma, taste perversion, tinnitus, xerophthalmia.

**Surgical and Medical Procedures:** Procedure dental oral, procedure female reproductive, procedure musculoskeletal, procedure skin.

**Urogenital and Reproductive System:** Dysuria, hematuria, intermenstrual bleeding, leukorrhea, menorrhagia, micturition frequency, pain renal, pain urinary tract, polyuria, priapism, renal calculus.

**Other:** Systemic lupus erythematosus.

## ***Post-Marketing and Other Experience***

The following adverse events not seen in controlled clinical trials have been observed in named patient programs or post-marketing experience:

**Body as a Whole:** Multiorgan hypersensitivity disorders characterized by features such as rash, fever, lymphadenopathy, abnormal liver function tests, eosinophilia and arthralgia (see PRECAUTIONS, Multi-organ Hypersensitivity subsection).

**Skin and Appendages:** Erythema multiforme, Stevens-Johnson syndrome, toxic epidermal necrolysis (see WARNINGS, Serious Dermatological Reactions subsection).

## **DRUG ABUSE AND DEPENDENCE**

### ***Abuse***

The abuse potential of Trileptal<sup>®</sup> (oxcarbazepine) has not been evaluated in human studies.

### ***Dependence***

Intragastric injections of oxcarbazepine to four cynomolgus monkeys demonstrated no signs of physical dependence as measured by the desire to self-administer oxcarbazepine by lever pressing activity.

NDA 21-014/SLR-012

NDA 21-285/SLR-007

Page 23

## **OVERDOSAGE**

### ***Human Overdose Experience***

Isolated cases of overdose with Trileptal<sup>®</sup> (oxcarbazepine) have been reported. The maximum dose taken was approximately 24,000 mg. All patients recovered with symptomatic treatment.

### ***Treatment and Management***

There is no specific antidote. Symptomatic and supportive treatment should be administered as appropriate. Removal of the drug by gastric lavage and/or inactivation by administering activated charcoal should be considered.

## **DOSAGE AND ADMINISTRATION**

Trileptal<sup>®</sup> (oxcarbazepine) is recommended as adjunctive treatment and monotherapy in the treatment of partial seizures in adults and children ages 4-16. All dosing should be given in a twice-a-day (BID) regimen. Trileptal oral suspension and Trileptal film-coated tablets may be interchanged at equal doses.

Trileptal should be kept out of the reach and sight of children.

Before using Trileptal oral suspension, shake the bottle well and prepare the dose immediately afterwards. The prescribed amount of oral suspension should be withdrawn from the bottle using the oral dosing syringe supplied. Trileptal oral suspension can be mixed in a small glass of water just prior to administration or, alternatively, may be swallowed directly from the syringe. After each use, close the bottle and rinse the syringe with warm water and allow it to dry thoroughly.

Trileptal can be taken with or without food (see CLINICAL PHARMACOLOGY, Pharmacokinetics subsection).

### ***Adults***

#### ***Adjunctive Therapy***

Treatment with Trileptal should be initiated with a dose of 600 mg/day, given in a BID regimen. If clinically indicated, the dose may be increased by a maximum of 600 mg/day at approximately weekly intervals; the recommended daily dose is 1200 mg/day. Daily doses above 1200 mg/day show somewhat greater effectiveness in controlled trials, but most patients were not able to tolerate the 2400 mg/day dose, primarily because of CNS effects. It is recommended that the patient be observed closely and plasma levels of the concomitant AEDs be monitored during the period of Trileptal titration, as these plasma levels may be altered, especially at Trileptal doses greater than 1200 mg/day (see PRECAUTIONS, Drug Interactions subsection).

#### ***Conversion to Monotherapy***

Patients receiving concomitant AEDs may be converted to monotherapy by initiating treatment with Trileptal at 600 mg/day (given in a BID regimen) while simultaneously initiating the reduction of the dose of the concomitant AEDs. The concomitant AEDs should be completely withdrawn over 3-6 weeks, while the maximum dose of Trileptal should be reached in about 2-4 weeks. Trileptal may be increased as clinically indicated by a maximum increment of 600 mg/day at approximately weekly

NDA 21-014/SLR-012

NDA 21-285/SLR-007

Page 24

intervals to achieve the recommended daily dose of 2400 mg/day. A daily dose of 1200 mg/day has been shown in one study to be effective in patients in whom monotherapy has been initiated with Trileptal. Patients should be observed closely during this transition phase.

### ***Initiation of Monotherapy***

Patients not currently being treated with AEDs may have monotherapy initiated with Trileptal. In these patients, Trileptal should be initiated at a dose of 600 mg/day (given in a BID regimen); the dose should be increased by 300 mg/day every third day to a dose of 1200 mg/day. Controlled trials in these patients examined the effectiveness of a 1200 mg/day dose; a dose of 2400 mg/day has been shown to be effective in patients converted from other AEDs to Trileptal monotherapy (see above).

### ***Pediatric Patients Age 4-16***

#### ***Adjunctive Therapy***

Treatment should be initiated at a daily dose of 8-10 mg/kg generally not to exceed 600 mg/day, given in a BID regimen. The target maintenance dose of Trileptal should be achieved over 2 weeks, and is dependent upon patient weight, according to the following chart:

20-29 kg - 900 mg/day

29.1-39 kg - 1200 mg/day

>39 kg - 1800 mg/day

In the clinical trial, in which the intention was to reach these target doses, the median daily dose was 31 mg/kg with a range of 6-51 mg/kg.

The pharmacokinetics of Trileptal are similar in older children (age >8 yrs) and adults. However, younger children (age <8 yrs) have an increased clearance (by about 30%-40%) compared with older children and adults. In the controlled trial, pediatric patients 8 years old and below received the highest maintenance doses.

Children below 2 years of age have not been studied in controlled clinical trials.

NDA 21-014/SLR-012  
NDA 21-285/SLR-007  
Page 25

### ***Conversion to Monotherapy***

Patients receiving concomitant antiepileptic drugs may be converted to monotherapy by initiating treatment with Trileptal at approximately 8-10 mg/kg/day given in a BID regimen, while simultaneously initiating the reduction of the dose of the concomitant antiepileptic drugs. The concomitant antiepileptic drugs can be completely withdrawn over 3-6 weeks while Trileptal may be increased as clinically indicated by a maximum increment of 10 mg/kg/day at approximately weekly intervals to achieve the recommended daily dose. Patients should be observed closely during this transition phase.

The recommended total daily dose of Trileptal is shown in the table below.

### ***Initiation of Monotherapy***

Patients not currently being treated with antiepileptic drugs may have monotherapy initiated with Trileptal. In these patients, Trileptal should be initiated at a dose of 8-10 mg/kg/day given in a BID regimen. The dose should be increased by 5 mg/kg/day every third day to the recommended daily dose shown in the table below.

Table 7: Range of Maintenance Doses of Trileptal<sup>®</sup> for Children by Weight During Monotherapy

Weight in kg	From Dose (mg/day)	To Dose (mg/day)
20	600	900
25	900	1200
30	900	1200
35	900	1500
40	900	1500
45	1200	1500
50	1200	1800
55	1200	1800
60	1200	2100
65	1200	2100
70	1500	2100

### ***Patients with Hepatic Impairment***

In general, dose adjustments are not required in patients with mild-to-moderate hepatic impairment (see CLINICAL PHARMACOLOGY, Pharmacokinetics, Special Populations subsection).

### ***Patients with Renal Impairment***

In patients with impaired renal function (creatinine clearance <30 mL/min) Trileptal therapy should be initiated at one-half the usual starting dose (300 mg/day) and increased slowly to achieve the desired clinical response (see CLINICAL PHARMACOLOGY, Pharmacokinetics, Special Populations subsection).

NDA 21-014/SLR-012  
NDA 21-285/SLR-007  
Page 26

## HOW SUPPLIED

### Tablets

**150 mg Film-Coated Tablets:** yellow, ovaloid, slightly biconvex, scored on both sides. Imprinted with T/D on one side and C/G on the other side.

Bottle of 100 ..... NDC 0078-0336-05  
Bottle of 1000 ..... NDC 0078-0336-09  
Unit Dose (blister pack)  
    Box of 100 (strips of 10)..... NDC 0078-0336-06

**300 mg Film-Coated Tablets:** yellow, ovaloid, slightly biconvex, scored on both sides. Imprinted with TE/TE on one side and CG/CG on the other side.

Bottle of 100 ..... NDC 0078-0337-05  
Bottle of 1000 ..... NDC 0078-0337-09  
Unit Dose (blister pack)  
    Box of 100 (strips of 10)..... NDC 0078-0337-06

**600 mg Film-Coated Tablets:** yellow, ovaloid, slightly biconvex, scored on both sides. Imprinted with TF/TF on one side and CG/CG on the other side.

Bottle of 100 ..... NDC 0078-0338-05  
Bottle of 1000 ..... NDC 0078-0338-09  
Unit Dose (blister pack)  
    Box of 100 (strips of 10)..... NDC 0078-0338-06

Store at 25°C (77°F); excursions permitted to 15-30°C (59-86°F) [see USP Controlled Room Temperature]. Dispense in tight container (USP).

### Suspension

**300 mg/5 mL (60 mg/mL) Oral Suspension:** off-white to slightly brown or slightly red suspension. Available in amber glass bottles containing 250 mL of oral suspension. Supplied with a 10 mL dosing syringe and press-in bottle adapter.

Bottle containing 250 mL of oral suspension ..... NDC 0078-0357-52

Store Trileptal<sup>®</sup> (oxcarbazepine) oral suspension in the original container. Shake well before using.

Use within 7 weeks of first opening the bottle.

Store at 25°C (77°F); excursions permitted to 15-30°C (59-86°F) [see USP Controlled Room Temperature].



Tablets Manufactured by:  
Novartis Pharmaceuticals Corporation

NDA 21-014/SLR-012  
NDA 21-285/SLR-007  
Page 27

Suffern, New York 10901

Oral Suspension Manufactured by:  
Novartis Pharma S.A.S.  
F-68330 Huningue, France

Distributed by:  
Novartis Pharmaceuticals Corporation  
East Hanover, New Jersey 07936