

090177e18398f53e\Final\Final On: 19-Sep-2012 15:43



**Advil<sup>®</sup> PM**  
**LIQUI-GELS<sup>®</sup>**  
Solubilized Ibuprofen, 200 mg/Diphenhydramine HCl, 25 mg  
Pain Reliever (NSAID)/Nighttime Sleep-Aid

**40 Liquid Filled Capsules**      **Liquid Filled Capsules**

**READ AND KEEP CARTON FOR COMPLETE WARNINGS AND INFORMATION**

**Do Not Use if seal under bottle cap imprinted with "SEALED for YOUR PROTECTION" is broken or missing.**

**Uses**  
■ for relief of occasional sleeplessness when associated with minor aches and pains  
■ helps you fall asleep and stay asleep

**Warnings**  
■ Ask your doctor before use if you are pregnant, under a doctor's care for any continuing medical illness, age 60 or over, taking any other drug or have stomach problems.  
■ This product may cause a severe allergic reaction, especially in people allergic to aspirin. Symptoms may include: hives, facial swelling, asthma (wheezing), shock, skin reddening, rash, blisters. If an allergic reaction occurs, stop use and seek medical help right away.  
■ Do not use this product if you have ever had an allergic reaction to any pain reliever/fever reducer, unless you have time for a full night's sleep, in children under 12 years or with any other product containing diphenhydramine.

**Stomach bleeding warning:** This product contains a nonsteroidal anti-inflammatory drug (NSAID), which may cause severe stomach bleeding. The chance is higher if you ■ are age 60 or older ■ have had stomach ulcers or bleeding problems ■ take a blood thinning (anticoagulant) or steroid drug ■ take other drugs containing prescription or nonprescription NSAIDs (aspirin, ibuprofen, naproxen, or others) ■ have 3 or more alcoholic drinks every day while using this product ■ take more or for a longer time than directed.

**When using this product drowsiness will occur. Do not drive a motor vehicle or operate machinery. Avoid alcoholic drinks. ■ The risk of heart attack or stroke may increase if you use more than directed or for longer than directed.**

**Directions** ■ do not take more than directed ■ adults and children 12 years and over: take 2 capsules at bedtime ■ do not take more than 2 capsules in 24 hours  
Each capsule contains: potassium 20 mg  
Store at 20-25°C (68-77°F) Avoid excessive heat above 40°C (104°F). Protect from light.

**Questions or comments?**  
Call weekdays 9 AM to 5 PM EST at 1-800-88-ADVIL  
For most recent product information, visit [www.Advil.com](http://www.Advil.com)  
Distributed by: Pfizer, Madison, NJ 07940 USA  
© 2012 Pfizer Inc. U.S. Patent Pending

PAA032340.FDA01



UNVARNISHED AND PRINTED  
IN BLACK OR DARK BLUE.  
FOR LOT & EXPIRATION AREA.





090177e18398f53c\Final\Final On: 19-Sep-2012 15:43

**Advil<sup>®</sup> PM**  
**LIQUI-GELS<sup>®</sup>**  
Solubilized Ibuprofen, 200 mg/Diphenhydramine HCl, 25 mg  
Pain Reliever (NSAID)/Nighttime Sleep-Aid

32 Liquid Filled Capsules **Liquid Filled Capsules**

**READ AND KEEP CARTON FOR COMPLETE WARNINGS AND INFORMATION**

**Do Not Use** if seal under bottle cap imprinted with "SEALED for YOUR PROTECTION" is broken or missing.

**Uses**  
■ for relief of occasional sleeplessness when associated with minor aches and pains  
■ helps you fall asleep and stay asleep

**Warnings**  
■ Ask your doctor before use if you are pregnant, under a doctor's care for any continuing medical illness, age 60 or over, taking any other drug or have stomach problems.  
■ This product may cause a severe allergic reaction, especially in people allergic to aspirin. Symptoms may include: hives, facial swelling, asthma (wheezing), shock, skin reddening, rash, blisters. If an allergic reaction occurs, stop use and seek medical help right away.  
■ Do not use this product if you have ever had an allergic reaction to any pain reliever/fever reducer, unless you have time for a full night's sleep; in children under 12 years or with any other product containing diphenhydramine.

**Stomach bleeding warning:** This product contains a nonsteroidal anti-inflammatory drug (NSAID), which may cause severe stomach bleeding. The chance is higher if you ■ are age 60 or older ■ have had stomach ulcers or bleeding problems ■ take a blood thinning (anticoagulant) or steroid drug ■ take other drugs containing prescription or nonprescription NSAIDs (aspirin, ibuprofen, naproxen, or others) ■ have 3 or more alcoholic drinks every day while using this product ■ take more or for a longer time than directed.  
■ When using this product drowsiness will occur. Do not drive a motor vehicle or operate machinery. Avoid alcoholic drinks. ■ The risk of heart attack or stroke may increase if you use more than directed or for longer than directed.

**Directions** ■ do not take more than directed ■ adults and children 12 years and over: take 2 capsules at bedtime ■ do not take more than 2 capsules in 24 hours  
Each capsule contains: potassium 20 mg  
Store at 20-25°C (68-77°F) Avoid excessive heat above 40°C (104°F). Protect from light.

**Questions or comments?**  
Call weekdays 9 AM to 5 PM EST at 1-800-88-ADVIL  
For most recent product information, visit [www.Advil.com](http://www.Advil.com)  
Distributed by: Pfizer, Madison, NJ 07940 USA  
© 2012 Pfizer Inc. U.S. Patent Pending

PAA032338.FDA01



(b) (4)

UNVARNISHED AND PRINTED  
IN BLACK OR DARK BLUE.  
FOR LOT & EXPIRATION AREA.



(b) (4)

**READ AND KEEP CARTON FOR COMPLETE WARNINGS AND INFORMATION**

**Drug Facts**  
*(In each capsule)*

**Active ingredients**  
 Diphenhydramine hydrochloride 25 mg..... Nighttime sleep-aid  
 Solubilized Ibuprofen equal to 200 mg Ibuprofen (NSAID)\*..... Pain reliever  
 \*nonsteroidal anti-inflammatory drug

**Purposes**  
 Solubilized Ibuprofen equal to 200 mg Ibuprofen (NSAID)\*..... Pain reliever  
 \*nonsteroidal anti-inflammatory drug

**Uses**  
 for relief of occasional sleeplessness when associated with minor aches and pains  
 helps you fall asleep and stay asleep

**Warnings**  
 Allergy alert: Ibuprofen may cause a severe allergic reaction, especially in people allergic to aspirin.  
 Symptoms may include:  
 hives ■ facial swelling ■ asthma (wheezing)  
 ■ shock ■ skin redness ■ rash ■ blisters  
 If an allergic reaction occurs, stop use and seek medical help right away.  
 Stomach bleeding warning: This product contains an NSAID, which may cause severe stomach bleeding. The chance is higher if you  
 ■ are age 60 or older  
 ■ have had stomach ulcers or bleeding problems  
 ■ take a blood thinning (anticoagulant) or steroid drug  
 ■ take other drugs containing prescription or nonprescription NSAIDs (aspirin, ibuprofen, naproxen, or others)  
 ■ have 3 or more alcoholic drinks every day while using this product  
 ■ take more or for a longer time than directed

**Do not use**  
 if you have ever had an allergic reaction to any other pain reliever/fever reducer  
 unless you have been told by your doctor to use it in children under 12 years of age  
 right before or after heart surgery  
 with any other product containing diphenhydramine, even one used on skin  
 if you have sleeplessness without pain

**Ask a doctor before use if**  
 stomach bleeding warning applies to you  
 you have problems or serious side effects from taking pain relievers or fever reducers  
 you have a history of stomach problems, such as heartburn  
 you have high blood pressure, heart disease, liver or kidney disease, kidney disease, or asthma  
 you are taking a diuretic  
 you have a breathing problem such as emphysema or chronic bronchitis  
 you have glaucoma  
 you have trouble urinating due to an enlarged prostate gland

**Ask a doctor or pharmacist before use if you are**  
 taking sedatives or tranquilizers, or any other sleep-aid under a doctor's care for any continuing medical illness  
 taking any other analgesic  
 taking aspirin for heart attack or stroke, because Ibuprofen may decrease the benefit of aspirin  
 taking any other drug

**When using this product**  
 drowsiness will occur  
 avoid alcoholic drinks  
 do not drive a motor vehicle or operate machinery  
 take with food or milk. If stomach upset occurs, the risk of heart attack or stroke may increase if you use more than directed or for longer than directed

**Drug Facts (continued)**

**Stop use and ask a doctor if**  
 you experience any of the following signs of stomach bleeding:  
 ■ faint ■ vomit blood  
 ■ have bloody or black stools  
 ■ have stomach pain that does not get better  
 ■ pain gets worse or lasts more than 10 days  
 ■ sleeplessness persists continuously for more than 2 weeks. Insomnia may be a symptom of a serious underlying medical illness.  
 ■ redness or swelling is present in the painful area  
 ■ any new symptoms appear

**■ If pregnant or breast-feeding, ask a health professional before use. It is especially important not to use Ibuprofen during the last 3 months of pregnancy unless carefully directed to do so by a doctor because it may cause problems in the unborn child or complications during delivery.**  
 Keep out of reach of children. In case of overdose, get medical help or contact a Poison Control Center right away.

**Directions**  
 do not take more than directed  
 adults and children 12 years and over: take 2 capsules at bedtime  
 do not take more than 2 capsules in 24 hours

**Other information**  
 each capsule contains: potassium 20 mg  
 read all warnings and directions before use. Keep carton, store at 20-25°C (68-77°F)  
 avoid excessive heat above 40°C (104°F)  
 protect from light

**Inactive ingredients**  
 D&C red no. 33, FD&C blue no. 1, fractionated coconut oil, gelatin, pharmaceutical ink, polyethylene glycol, potassium hydroxide, purified water, sorbitan, sorbitol

UNPRINTED AREA FOR DATE & LOT (UNVARNISHED)

PRINTED AREA FOR DATE & LOT LASER CODING (VARNISHED)

FPO  
 3 0573 0167 32 1

FPO 128 Code 032337

FPO 128 Code 032337

FPO 128 Code 032337

FPO 128 Code 032337

FPO 128 Code 032337

128 CODE AREA - SUBSET C 10 MIL DENSITY WITH 4 OR 6 DIGITS (CODE TO EXTEND TO EDGE OF FLAP - UNVARNISHED) - PRINTED SIDE OF CARTON

**EMBOSSING AREA**

AdvilPM

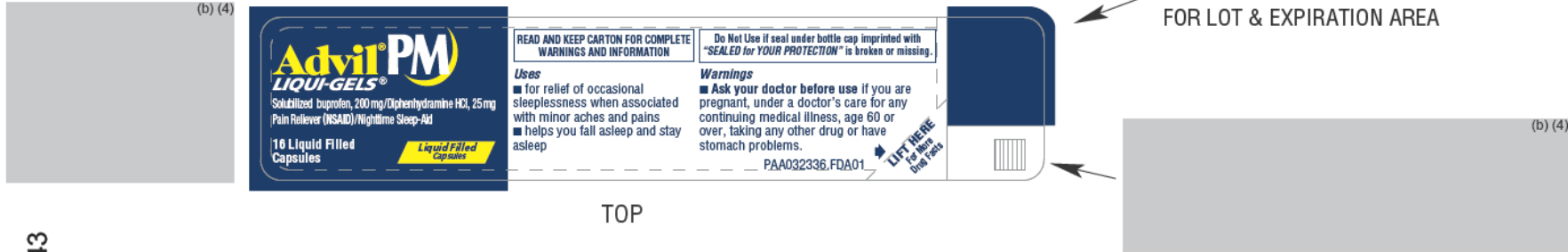
Do not use if seal under bottle cap imprinted with "SEALED for YOUR PROTECTION" is broken or missing.

For most recent product information, visit [www.AdvIL.com](http://www.AdvIL.com)  
 Distributed by: River, Madison, NJ 07940 USA  
 © 2012 Pfizer Inc. U.S. Patent Pending  
 LIQUI-GELS® is a trademark of registered trademark of Cabot Pharmaceuticals Solutions.

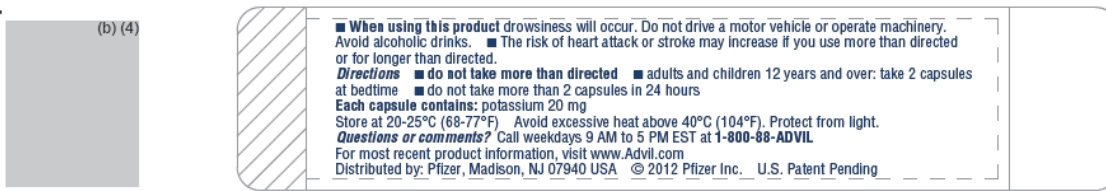
**Questions or comments?**  
 Call weekdays 9 AM to 5 PM EST at 1-800-88-ADVIL

**Drug Facts (continued)**

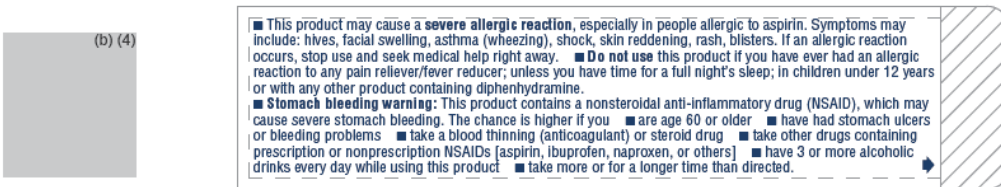
(b) (4)



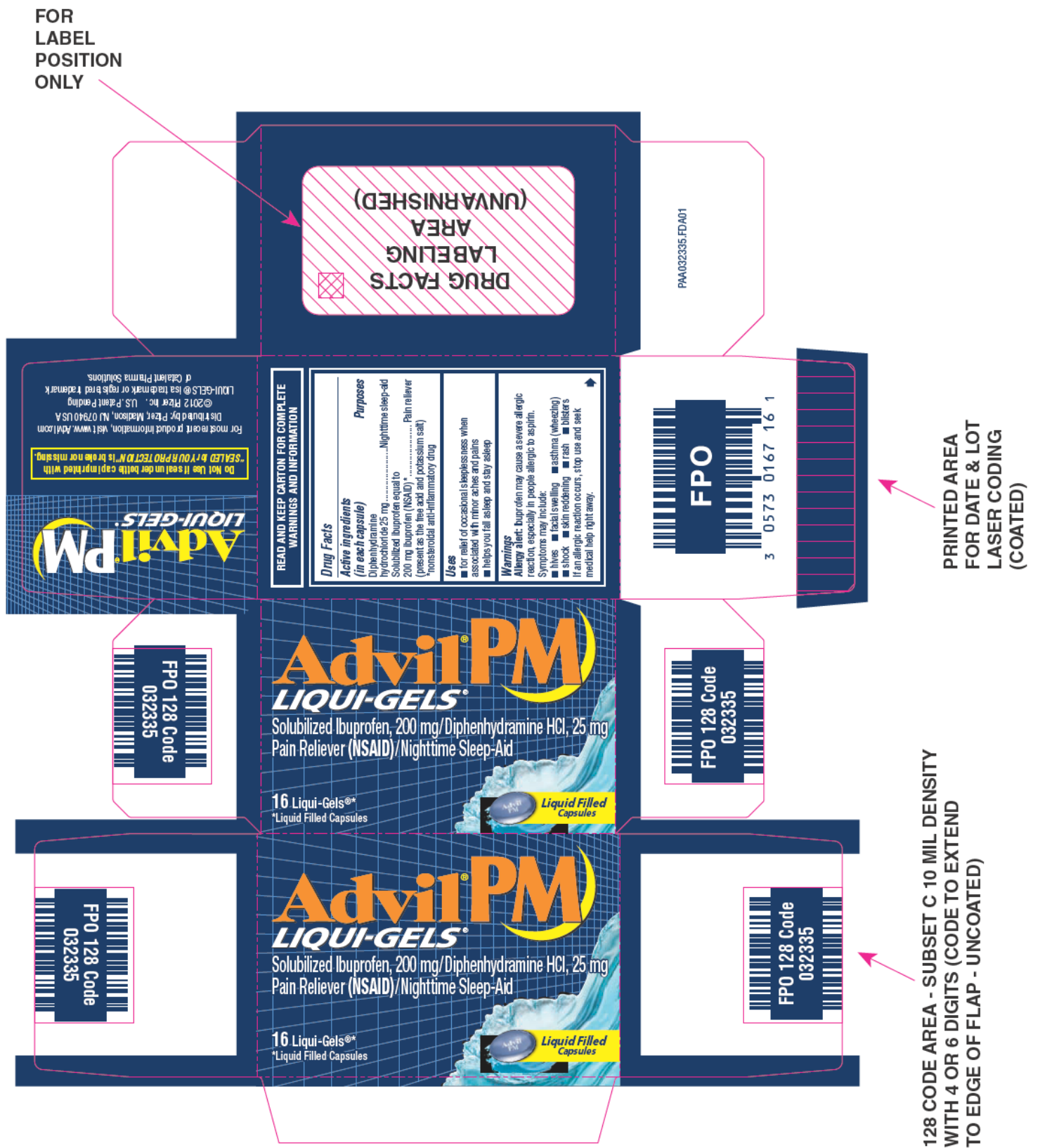
090177e18398f53a\Final\Final On: 19-Sep-2012 15:43



3/8" HINGE AREA UNVARNISHED

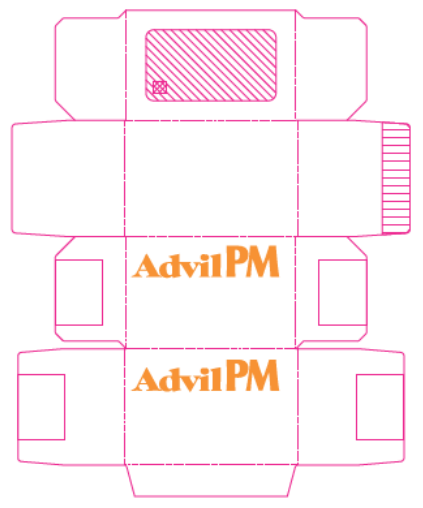


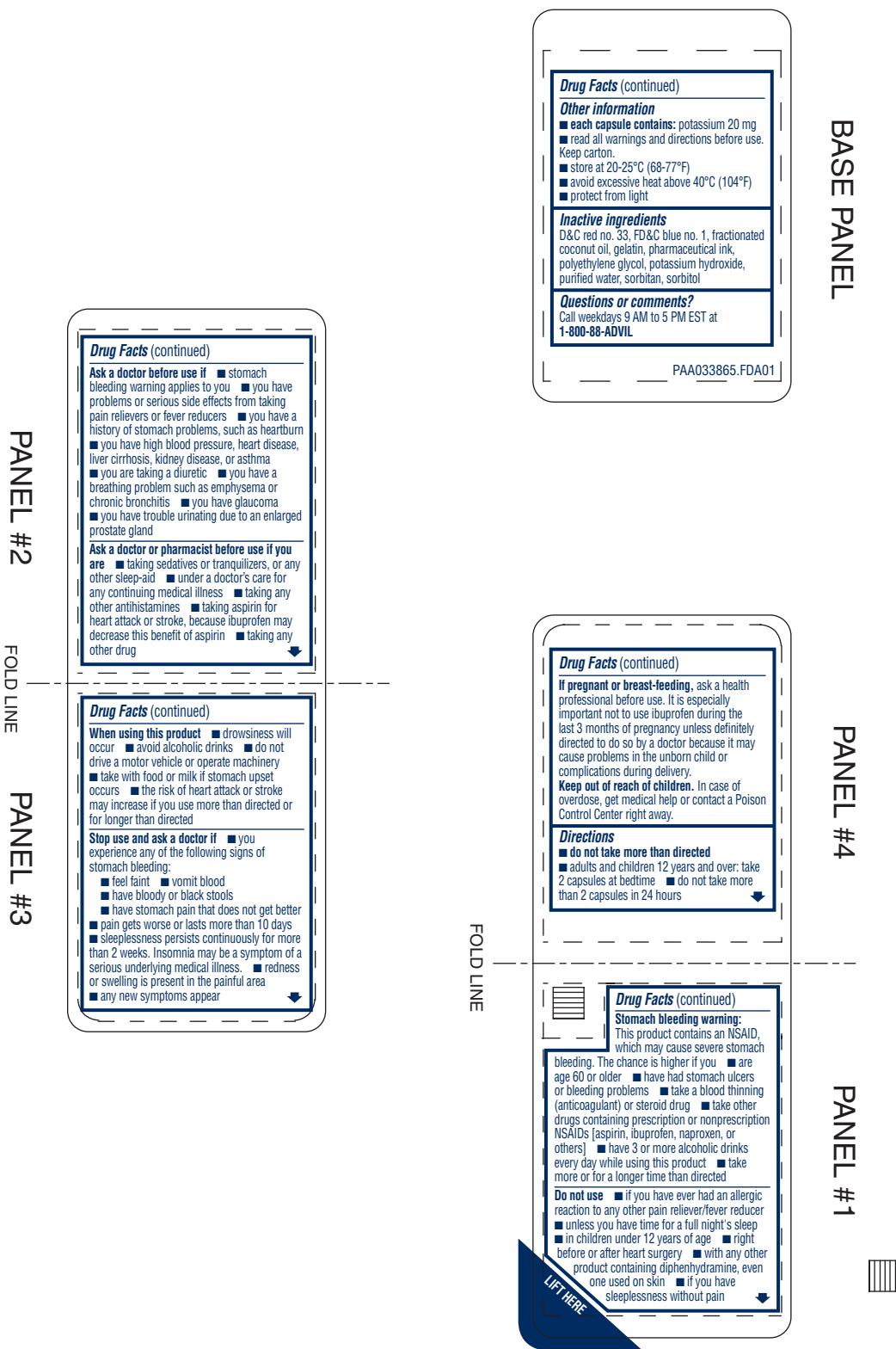
3/8" HINGE AREA UNVARNISHED



(b) (4)

**EMBOSSING AREAS**





090177e18398f53fFinalFinal On: 19-Sep-2012 15:43

(b) (4)

(b) (4)