

**Advil<sup>PM</sup> LIQUI-GELS<sup>®</sup>**  
Solubilized Ibuprofen, 200 mg /  
Diphenhydramine HCl, 25 mg  
Pain Reliever (NSAID) /  
Nighttime Sleep-Aid

**20 Liquid F Med Capsules**

**Uses** ■ for relief of occasional sleeplessness when associated with minor aches and pains ■ helps you fall asleep and stay asleep

**Warnings** ■ Ask your doctor before use if you are pregnant, under a doctor's care for any continuing medical illness, age 60 or over, taking any other drug or have stomach problems.

**Do Not Use** if seal under bottle cap imprinted with "SEALED for YOUR PROTECTION" is broken or missing.

■ This product may cause a **severe allergic reaction**, especially in people allergic to aspirin. Symptoms may include: hives, facial swelling, asthma (wheezing), shock, skin reddening, rash, blisters. If an allergic reaction occurs, stop use and seek medical help right away.

PAA076833

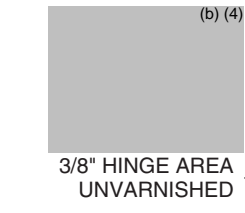
**LIFT HERE For More Info Panel**

**KISS CUT**

**UNVARNISHED AND PRINTED IN BLACK OR DARK BLUE FOR LOT & EXPIRATION AREA.**

**TOP PANEL 1**

3/16" X 3/16" DATA MATRIX CODE (ECC 200), PRINTED IN BLACK OR DARK BLUE ON UNPRINTED WHITE BACKGROUND.  
**DATA MATRIX CODE = 076833**



**Directions**  
■ do not take more than directed  
■ adults and children 12 years and over: take 2 capsules at bedtime  
■ do not take more than 2 capsules in 24 hours  
Each capsule contains: **potassium 20 mg**  
Store at 20-25°C (68-77°F)  
Avoid excessive heat above 40°C (104°F). Protect from light.  
**Questions or comments?** Call weekdays 9 AM to 5 PM EST at **1-800-88-ADVIL**  
For most recent product information, visit [www.Advil.com](http://www.Advil.com)  
Distributed by: Pfizer, Madison, NJ 07940 USA © 2016 Pfizer Inc. U.S. Patent 9,155,718

**3/8" HINGE AREA UNVARNISHED**

**BASE PANEL 3**



■ **Do not use** this product if you have ever had an allergic reaction to any pain reliever/fever reducer; unless you have time for a full night's sleep; in children under 12 years or with any other product containing diphenhydramine.  
■ **Stomach bleeding warning:** This product contains a nonsteroidal anti-inflammatory drug (NSAID), which may cause severe stomach bleeding. The chance is higher if you ■ are age 60 or older ■ have had stomach ulcers or bleeding problems ■ take a blood thinning (anticoagulant) or steroid drug ■ take other drugs containing prescription or nonprescription NSAIDs [aspirin, ibuprofen, naproxen, or others] ■ have 3 or more alcoholic drinks every day while using this product ■ take more or for a longer time than directed. ■ **Heart attack and stroke warning:** NSAIDs, except aspirin, increase the risk of heart attack, heart failure, and stroke. These can be fatal. The risk is higher if you use more than directed or for longer than directed. ■ **When using this product** drowsiness will occur. Do not drive a motor vehicle or operate machinery. Avoid alcoholic drinks.

**3/8" HINGE AREA UNVARNISHED**

**RELEASED BACK PANEL 2**

**PRODUCTION**

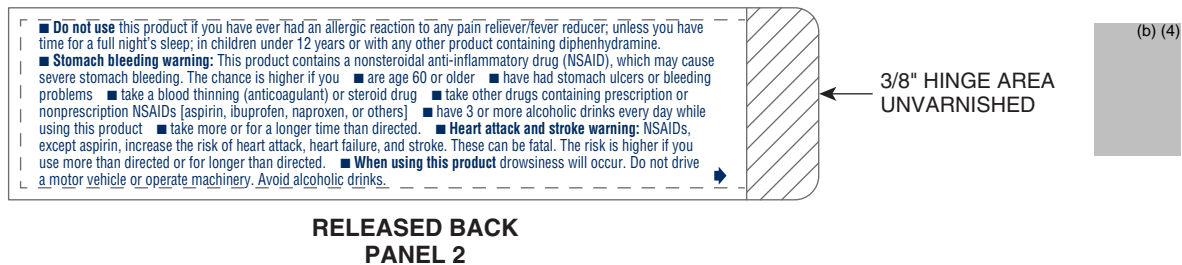
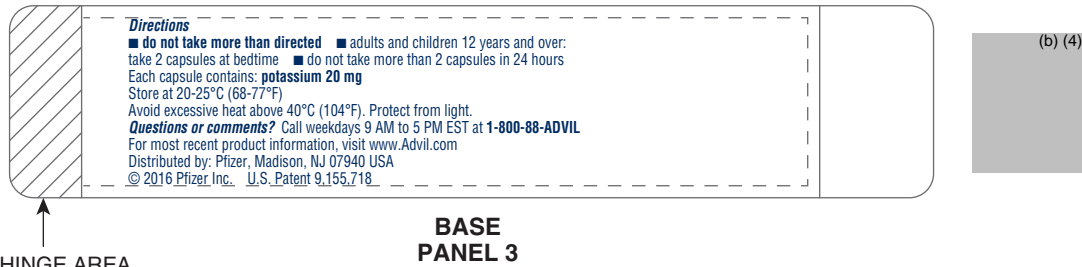
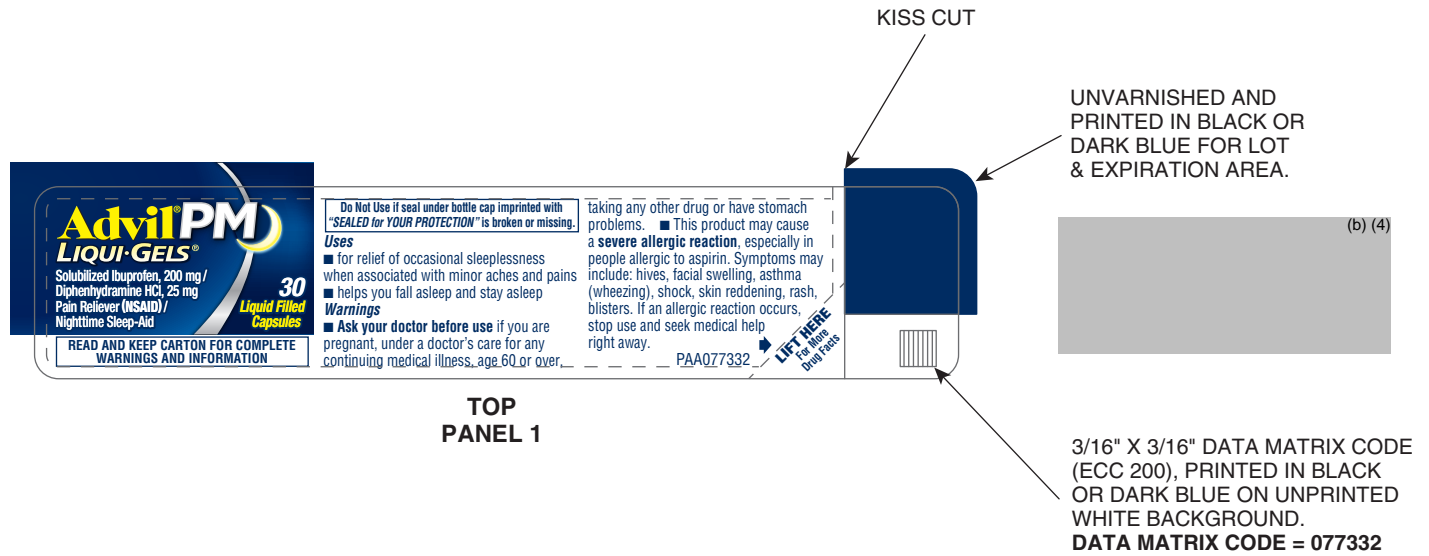
(NOT COLOR ACCURATE)

Job Information	Color Legend
<p><b>Date</b> 21-OCT-2016 <b>PASS #</b> 1 <b>Component #</b> PAA076833 <b>Drawing #</b> DWG-00000785v02</p>	<p>See Art For Colors</p>
<p><b>Identification</b></p> <p> <b>Consumer Healthcare</b></p> <p><b>Madison Artwork &amp; Packaging Center</b> One Giralda Farms, Madison, NJ 07940 Phone: (973) 660-5000</p>	
<p><b>Vendor Identification</b></p> <p><b>Madison Artwork &amp; Packaging Center</b> Graphic Artist: (b) (4)</p>	<p><b>Printer &amp; User Notes</b></p> <p>PRINTER TO REPLACE ALL FPO CODES WITH SCANNABLE ART.</p> <p>PRINTER RESPONSIBLE FOR ALL TRAPPING, BLEEDS, COATINGS AND RESOLUTION.</p> <p>PRINTER AND USERS RESPONSIBLE FOR PROPER LICENSING OF ALL FONTS USED IN THIS ARTWORK.</p>

DRUG FACTS TEXT DEFINED	TYPE SIZE
• HEADINGS	6 pt
• SUBHEADINGS/BODY TEXT	6 pt
• LEADING	6.35 pt
• BULLETS	5 pt
• SPACE BEFORE BULLET	2 ems
• WARNING BOX LINE, HAIRLINES	.5 pt

090177e18affafd6\Final\Final On: 06-Jan-2017 21:22



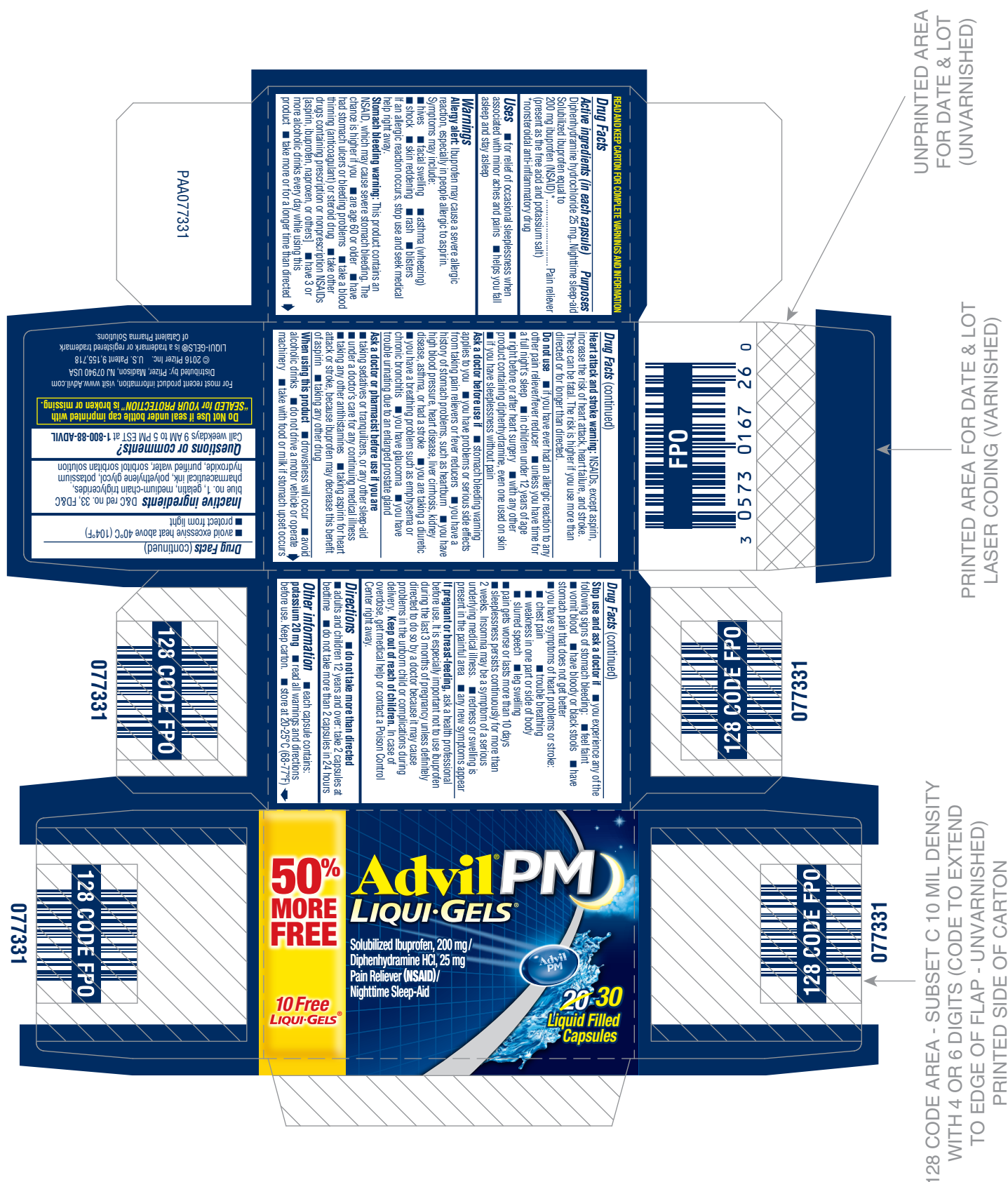


## PRODUCTION (NOT COLOR ACCURATE)

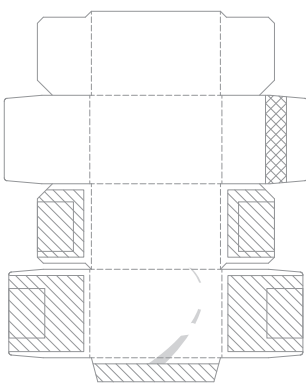
Job Information	Color Legend
Date 07-NOV-2016 PASS # 1 Component # PAA077332 Drawing # DWG-00000785v02	See Art For Colors
Identification	
Madison Artwork & Packaging Center One Giralda Farms, Madison, NJ 07940 Phone: (973) 660-5000	<b>Printer &amp; User Notes</b> PRINTER TO REPLACE ALL FPO CODES WITH SCANNABLE ART. PRINTER RESPONSIBLE FOR ALL TRAPPING, BLEEDS, COATINGS AND RESOLUTION. PRINTER AND USERS RESPONSIBLE FOR PROPER LICENSING OF ALL FONTS USED IN THIS ARTWORK.
Vendor Identification	
Madison Artwork & Packaging Center Graphic Artist: (b) (4)	

DRUG FACTS TEXT DEFINED	TYPE SIZE
• HEADINGS	6 pt
• SUBHEADINGS/BODY TEXT	6 pt
• LEADING	6.35 pt
• BULLETS	5 pt
• SPACE BEFORE BULLET	2 ems
• WARNING BOX LINE, HAIRLINES	.5 pt

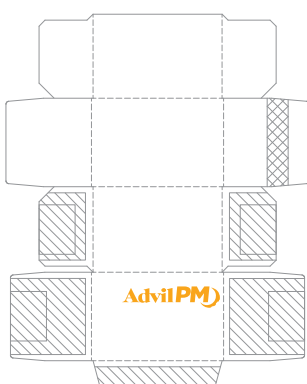
090177e18affafda\Final\Final On: 06-Jan-2017 21:26



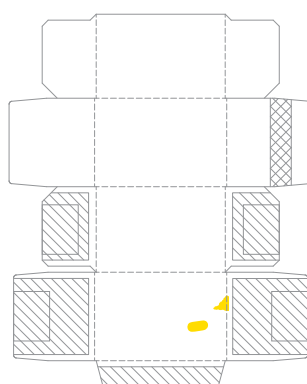
Silver Foil Stamp  
Full size file on Silver Foil layer



Embossing - # 1  
Full size file on Emboss layer



Embossing - 2nd level Sculptured  
Full size file on Emboss layer



## PRODUCTION

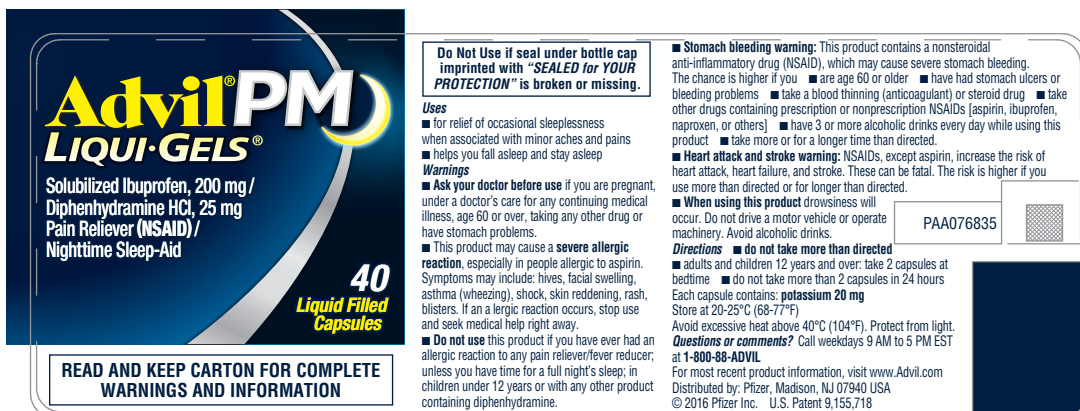
(NOT COLOR ACCURATE)

Job Information	Color Legend
<p><b>Date</b> 09-NOV-2016 PASS # 1  <b>Component #</b> PAA077331  <b>Drawing #</b> DWG-00001042 v04</p>	
<p><b>Identification</b></p> <p><b>Pfizer Consumer Healthcare</b></p> <p><b>Madison Artwork &amp; Packaging Center</b>                      One Giralda Farms, Madison, NJ 07940                      Phone: (973) 660-5000</p>	
<p><b>Vendor Identification</b></p> <p><b>Madison Artwork &amp; Packaging Center</b>                      Graphic Artist: (b) (4)</p>	
<p><b>Printer &amp; User Notes</b></p> <p>PRINTER TO REPLACE ALL FPO CODES WITH SCANNABLE ART.</p> <p>PRINTER RESPONSIBLE FOR ALL TRAPPING, BLEEDS, COATINGS AND RESOLUTION. PRINTER AND USERS RESPONSIBLE FOR PROPER LICENSING OF ALL FONTS USED IN THIS ARTWORK.</p>	

DRUG FACTS MODIFIED TEXT DEFINED	TYPE SIZE
• DRUG FACTS TITLE	8 pt
• DRUG FACTS CONTINUED	7 pt
• HEADINGS	7 pt
• SUBHEADINGS/BODY TEXT	6 pt
• LEADING	6.25 pt
• # OF CHARACTERS PER INCH	<39
• BULLETS	5 pt
• SPACE BEFORE BULLET	2 ems
• BARLINES, HAIRLINES	1.5 pt, .5 pt
• SPACE BETWEEN HAIRLINES AND BOX END	2 spaces

**Printer Notes:**  
FPO Silver Foil is only representative of Foil Stamp. Do not separate or print.

090177e18affaf9\Final\Final On: 06-Jan-2017 21:22




3/16" X 3/16" DATA MATRIX CODE (ECC200),  
 PRINTED IN BLACK OR DARK BLUE ON  
 UNPRINTED WHITE BACKGROUND.  
**DATA MATRIX CODE = 076835**

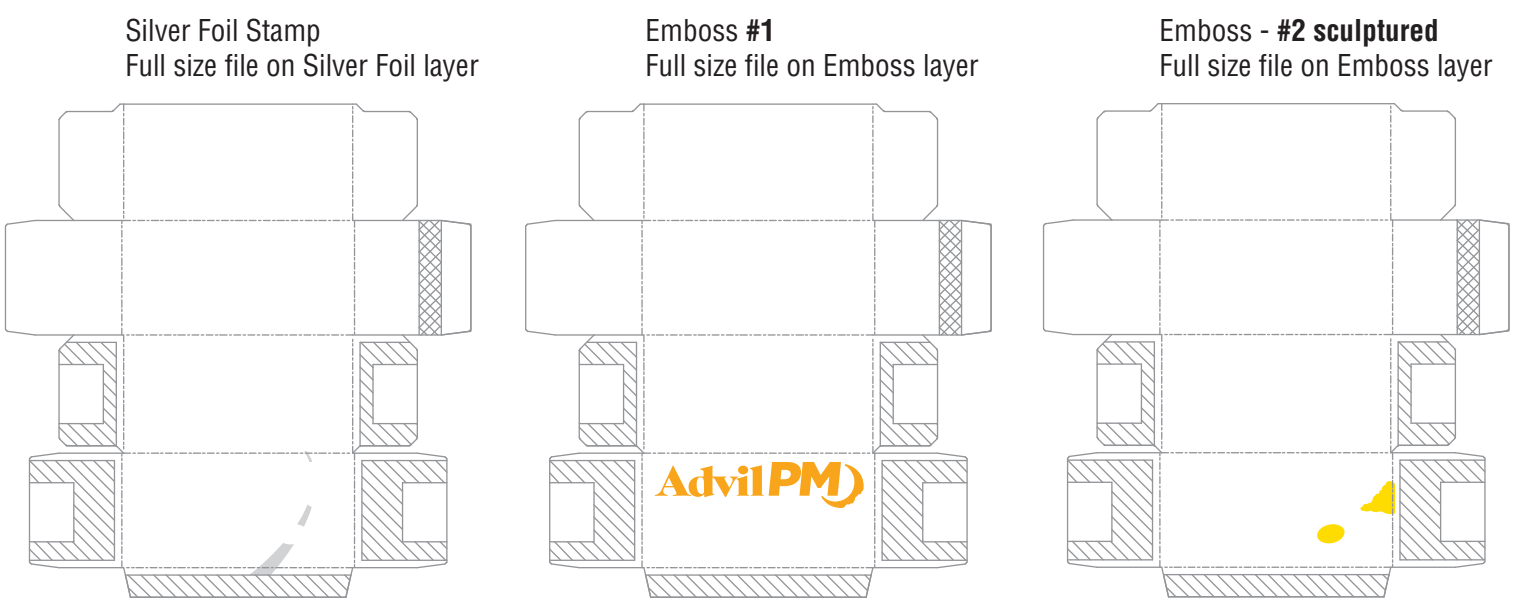
UNVARNISHED AND PRINTED  
 IN BLACK OR DARK BLUE.  
 FOR LOT & EXPIRATION AREA.

# PRODUCTION

(NOT COLOR ACCURATE)

Job Information	Color Legend
Date 20-OCT-2016 PASS # 1 Component # PAA076835 Drawing # DWG-00000433v01	(b) (4)
Identification	
 Madison Artwork & Packaging Center One Giralda Farms, Madison, NJ 07940 Phone: (973) 660-5000	<b>Printer &amp; User Notes</b> PRINTER TO REPLACE ALL FPO CODES WITH SCANNABLE ART. PRINTER RESPONSIBLE FOR ALL TRAPPING, BLEEDS, COATINGS AND RESOLUTION. PRINTER AND USERS RESPONSIBLE FOR PROPER LICENSING OF ALL FONTS USED IN THIS ARTWORK.
Vendor Identification	
Madison Artwork & Packaging Center Graphic Artist: (b) (4)	

DRUG FACTS TEXT DEFINED	TYPE SIZE
• HEADINGS	5.3 pt
• SUBHEADINGS/BODY TEXT	5.3 pt
• LEADING	5.8 pt
• BULLETS	4.3 pt
• SPACE BEFORE BULLET	2 ems
• WARNING BOX LINE, HAIRLINES	.5 pt



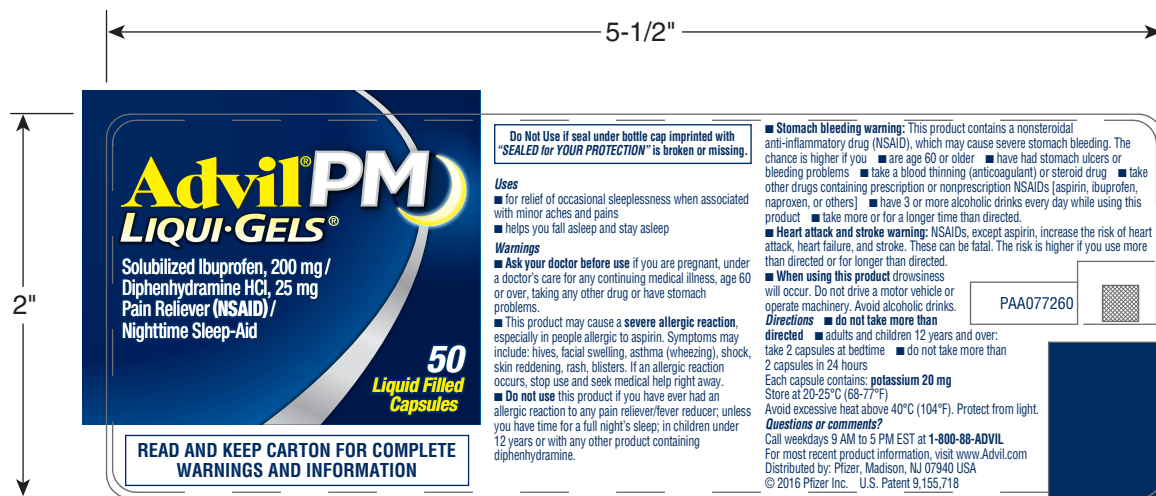
**PRODUCTION**

(NOT COLOR ACCURATE)

Job Information	Color Legend
Date 30-JAN-2017 PASS # 1 Component # PAA085164 Drawing # DWG-00000432v04	
Identification	
Consumer Healthcare Madison Artwork & Packaging Center One Giralda Farms, Madison, NJ 07940 Phone: (973) 660-5000	
Vendor Identification	<b>Printer &amp; User Notes</b> PRINTER TO REPLACE ALL FPO CODES WITH SCANNABLE ART. PRINTER RESPONSIBLE FOR ALL TRAPPING, BLEEDS, COATINGS AND RESOLUTION. PRINTER AND USERS RESPONSIBLE FOR PROPER LICENSING OF ALL FONTS USED IN THIS ARTWORK.
Madison Artwork & Packaging Center Graphic Artist: (b) (4)	

DRUG FACTS MODIFIED TEXT DEFINED	TYPE SIZE
• DRUG FACTS TITLE	8 pt
• DRUG FACTS CONTINUED	7 pt
• HEADINGS	7 pt
• SUBHEADINGS/BODY TEXT	6 pt
• LEADING	6.25 pt
• # OF CHARACTERS PER INCH	<39
• BULLETS	5 pt
• SPACE BEFORE BULLET	2 ems
• BARLINES, HAIRLINES	1.5 pt, .5 pt
• SPACE BETWEEN HAIRLINES AND BOX END	2 spaces

**Printer Notes:**  
FPO Silver Foil is only representative of Foil Stamp. Do not separate or print.




3/16" X 3/16" DATA MATRIX CODE (ECC200),  
PRINTED IN BLACK OR DARK BLUE ON  
UNPRINTED WHITE BACKGROUND.  
**DATA MATRIX CODE = 077260**

UNVARNISHED AND PRINTED  
IN BLACK OR DARK BLUE.  
FOR LOT & EXPIRATION AREA.

090177e18affc236\Final\Final On: 06-Jan-2017 21:25

## PRODUCTION

(NOT COLOR ACCURATE)

Job Information	Color Legend
<b>Date</b> 07-NOV-2016 PASS # 1 <b>Component #</b> PAA077260 <b>Drawing #</b> DWG-00000433v01	(b) (4)
Identification	
 <b>Madison Artwork &amp; Packaging Center</b> One Giralda Farms, Madison, NJ 07940 Phone: (973) 660-5000	<b>Printer &amp; User Notes</b> PRINTER TO REPLACE ALL FPO CODES WITH SCANNABLE ART. PRINTER RESPONSIBLE FOR ALL TRAPPING, BLEEDS, COATINGS AND RESOLUTION. PRINTER AND USERS RESPONSIBLE FOR PROPER LICENSING OF ALL FONTS USED IN THIS ARTWORK.
Vendor Identification	
<b>Madison Artwork &amp; Packaging Center</b> Graphic Artist: (b) (4)	

DRUG FACTS TEXT DEFINED	TYPE SIZE
• HEADINGS	5.25 pt
• SUBHEADINGS/BODY TEXT	5.25 pt
• LEADING	5.55 pt
• BULLETS	4.25 pt
• SPACE BEFORE BULLET	2 ems
• WARNING BOX LINE, HAIRLINES	.5 pt

**READ AND KEEP CARTON FOR COMPLETE WARNINGS AND INFORMATION**

**Drug Facts**  
(in each capsule)  
**Active ingredients**  
Diphenhydramine  
Ibuprofen 200 mg  
Solubilized ibuprofen equal to 200 mg ibuprofen (NSAID)  
(present as the free acid and potassium salt)  
Nonsteroidal anti-inflammatory drug

**Purposes**  
Nighttime sleep-aid  
Pain reliever

**Uses**  
■ for relief of occasional sleeplessness when associated with minor aches and pains  
■ helps you fall asleep and stay asleep

**Warnings**  
**Major alert:** Ibuprofen may cause a severe allergic reaction, especially in people allergic to aspirin.  
Symptoms may include:  
■ hives ■ facial swelling ■ asthma (wheezing)  
■ itchy ■ skin redness ■ rash ■ blisters  
If an allergic reaction occurs, stop use and seek medical help right away.  
**Stomach bleeding warning:** This product contains an NSAID, which may cause severe stomach bleeding. The chance is higher if you:  
■ are age 60 or older  
■ have had stomach ulcers or bleeding problems  
■ take a blood thinning (anticoagulant) or steroid drug  
■ take other drugs containing prescription or nonprescription NSAIDs (aspirin, ibuprofen, naproxen, or others)  
■ have 3 or more alcoholic drinks every day while using this product  
■ take more or for a longer time than directed

**Drug Facts (continued)**  
**Heart attack and stroke warning:** NSAIDs, except aspirin, increase the risk of heart attack, heart failure, and stroke. These can be fatal. The risk is higher if you use more than directed or for longer than directed.  
**Do not use:**  
■ if you have ever had an allergic reaction to any other pain reliever/fever reducer  
■ unless you have time for a full night's sleep  
■ in children under 12 years of age  
■ right before or after heart surgery  
■ with any other product containing diphenhydramine, even one used on skin  
■ if you have sleeplessness without pain

**Ask a doctor before use if:**  
■ stomach bleeding warning applies to you  
■ you have problems or serious side effects from taking pain relievers or fever reducers  
■ you have a history of stomach problems, such as heartburn  
■ you have high blood pressure, heart disease, liver cirrhosis, kidney disease, asthma, or had a stroke  
■ you are taking a diuretic  
■ you have a breathing problem such as emphysema or chronic bronchitis  
■ you have glaucoma  
■ you have trouble urinating due to an enlarged prostate gland

**Ask a doctor or pharmacist before use if you are:**  
■ taking sedatives or tranquilizers, or any other sleep-aid  
■ under a doctor's care for any continuing medical illness  
■ taking any other medications  
■ taking aspirin for heart attack or stroke, because ibuprofen may decrease the benefit of aspirin  
■ taking any other drug

**When using this product:**  
■ avoid alcoholic drinks  
■ do not drive a motor vehicle or operate machinery  
■ take with food or milk if stomach upset occurs

**Drug Facts (continued)**  
**Stop use and ask a doctor if:**  
■ you experience any of the following signs of stomach bleeding:  
■ feel faint ■ vomit blood ■ have bloody or black stools  
■ have stomach pain that does not get better  
■ you have symptoms of heart problems or stroke:  
■ chest pain ■ trouble breathing  
■ weakness in one part or side of body  
■ slurred speech ■ leg swelling  
■ pain gets worse or lasts more than 10 days  
■ sleeplessness persists continuously for more than 2 weeks. Insomnia may be a symptom of a serious underlying medical illness.  
■ dizziness or swelling is present in the painful area  
■ any new symptoms appear

**If pregnant or breast-feeding:** ask a health professional before use. It is especially important not to use ibuprofen during the last 3 months of pregnancy unless definitely directed to do so by a doctor because it may cause problems in the unborn child or complications during delivery. **Keep out of reach of children.** In case of overdose, get medical help or contact a Poison Control Center right away.

**Directions**  
■ do not take more than directed  
■ adults and children 12 years and over: take 2 capsules at bedtime  
■ do not take more than 2 capsules in 24 hours

**Other information**  
■ each capsule contains: potassium 20 mg  
■ read all warnings and directions before use. Keep carton stored at 20-25°C (68-77°F)  
■ avoid excessive heat above 40°C (104°F)  
■ protect from light

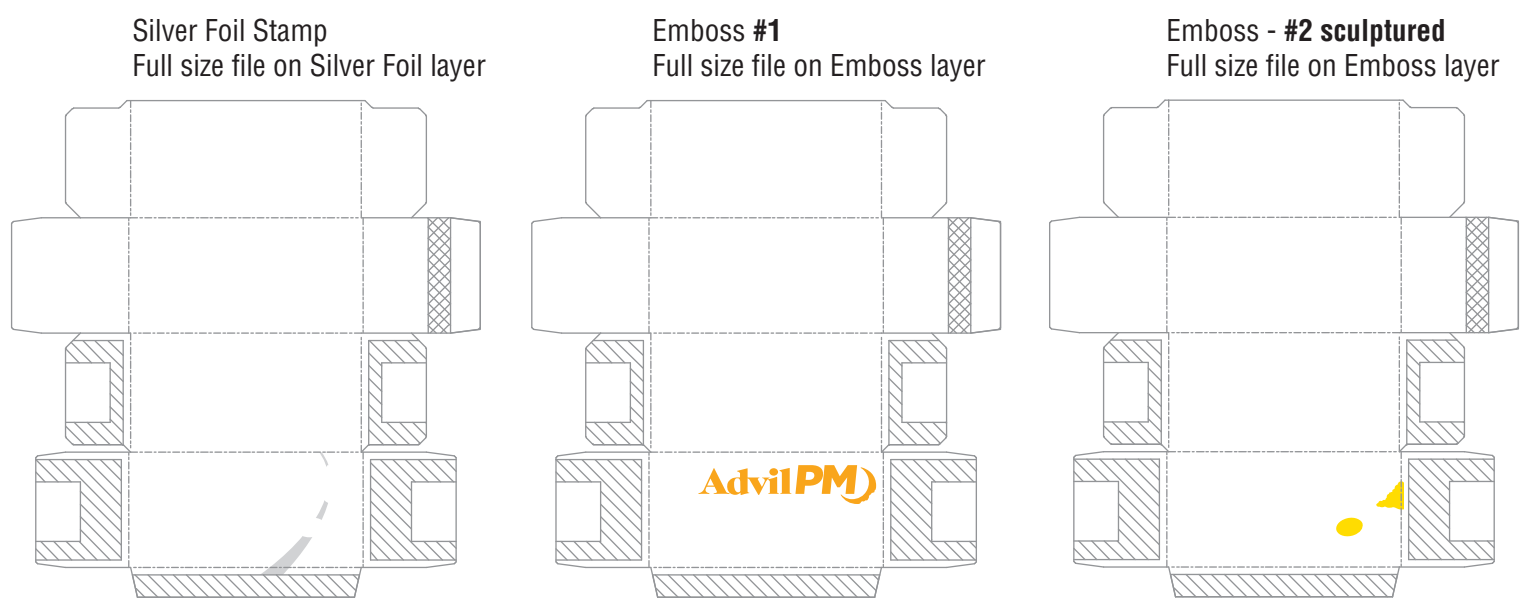
**Inactive ingredients** D&C red no. 33, FD&C blue no. 1, gelatin, medium-chain triglycerides, pharmaceutical ink, polyethylene glycol, potassium hydroxide, purified water, sodium sulfadiazine solution

**128 CODE AREA - SUBSET C 10 MIL DENSITY WITH 4 OR 6 DIGITS (CODE TO EXTEND TO EDGE OF FLAP - UNVARNISHED) PRINTED SIDE OF CARTON**

**UNPRINTED AREA FOR DATE & LOT LASER CODING (VARNISHED)**

**UNPRINTED AREA FOR DATE & LOT (UNVARNISHED)**

**UNVARNISHED AREAS**



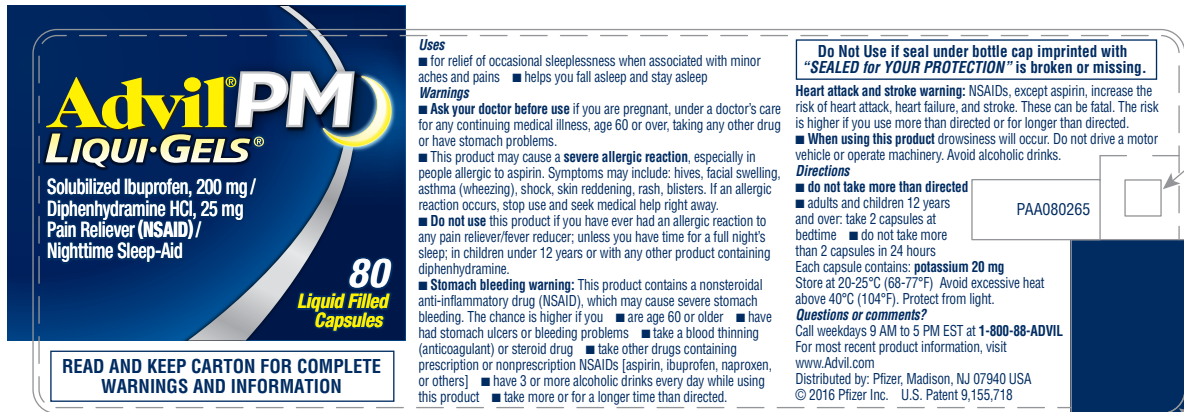
**PRODUCTION**

(NOT COLOR ACCURATE)

Job Information	Color Legend
Date 08-NOV-2016 PASS # 1 Component # PAA077259 Drawing # DWG-00000432 v04	(b) (4)
<b>Identification</b> Consumer Healthcare Madison Artwork & Packaging Center One Giralda Farms, Madison, NJ 07940 Phone: (973) 660-5000	<b>Printer &amp; User Notes</b> PRINTER TO REPLACE ALL FPO CODES WITH SCANNABLE ART. PRINTER RESPONSIBLE FOR ALL TRAPPING, BLEEDS, COATINGS AND RESOLUTION. PRINTER AND USERS RESPONSIBLE FOR PROPER LICENSING OF ALL FONTS USED IN THIS ARTWORK.
<b>Vendor Identification</b> Madison Artwork & Packaging Center Graphic Artist: (b) (4)	

DRUG FACTS MODIFIED TEXT DEFINED	TYPE SIZE
• DRUG FACTS TITLE	8 pt
• DRUG FACTS CONTINUED	7 pt
• HEADINGS	7 pt
• SUBHEADINGS/BODY TEXT	6 pt
• LEADING	6.25 pt
• # OF CHARACTERS PER INCH	<39
• BULLETS	5 pt
• SPACE BEFORE BULLET	2 ems
• BARLINES, HAIRLINES	1.5 pt, .5 pt
• SPACE BETWEEN HAIRLINES AND BOX END	2 spaces

**Printer Notes:**  
FPO Silver Foil is only representative of Foil Stamp. Do not separate or print.




3/16" X 3/16" DATA MATRIX CODE (ECC 200), PRINTED IN BLACK OR DARK BLUE ON UNPRINTED WHITE BACKGROUND. DATA MATRIX CODE = 080265

UNVARNISHED AND PRINTED IN BLACK OR DARK BLUE FOR LOT & EXPIRATION AREA.

090177e189a10a0\Final\Final On: 29-Sep-2016 02:05

## PRODUCTION

(NOT COLOR ACCURATE)

Job Information	Color Legend
Date 28-SEP-2016 PASS # 2 Component # PAA080265 Drawing # DWG-00000507 v02	(b) (4)
Identification	
 Madison Artwork & Packaging Center One Giralda Farms, Madison, NJ 07940 Phone: (973) 660-5000	<b>Printer &amp; User Notes</b> PRINTER TO REPLACE ALL FPO CODES WITH SCANNABLE ART. PRINTER RESPONSIBLE FOR ALL TRAPPING, BLEEDS, COATINGS AND RESOLUTION. PRINTER AND USERS RESPONSIBLE FOR PROPER LICENSING OF ALL FONTS USED IN THIS ARTWORK.
Vendor Identification	
Madison Artwork & Packaging Center Graphic Artist: (b) (4) Reference: 6493	

DRUG FACTS TEXT DEFINED	TYPE SIZE
• HEADINGS	5.5 pt
• SUBHEADINGS/BODY TEXT	5.5 pt
• LEADING	6 pt
• BULLETS	4.5 pt
• SPACE BEFORE BULLET	2 ems
• WARNING BOX LINE, HAIRLINES	.5 pt

128 CODE AREA - SUBSET C 10 MIL DENSITY WITH 4 OR 6 DIGITS  
(CODE TO EXTEND TO EDGE OF FLAP - UNVARNISHED) -  
PRINTED SIDE OF CARTON



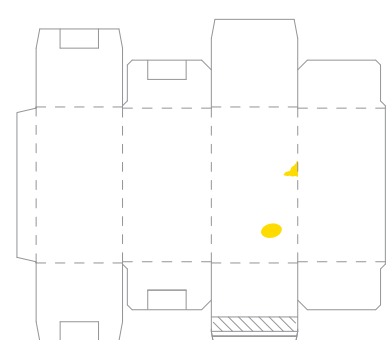
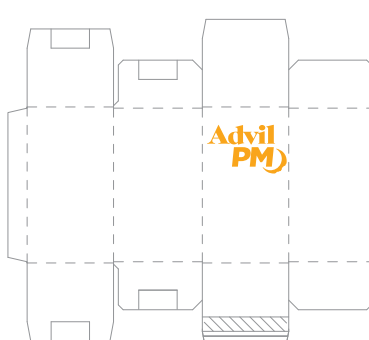
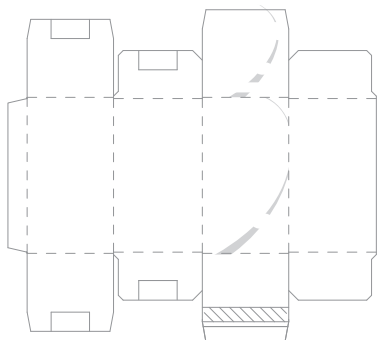
UNPRINTED AREA FOR DATE & LOT  
CODING (UNVARNISHED)

PRINTED AREA FOR DATE & LOT  
LASER CODING (VARNISHED)

Silver Foil Stamp  
Full size file on Silver Foil layer  
Must open file with Illustrator

Embossing #1  
Full size file on Emboss #1 layer  
Must open file with Illustrator

Embossing #2 sculptured  
Full size file on Emboss #2 layer  
Must open file with Illustrator



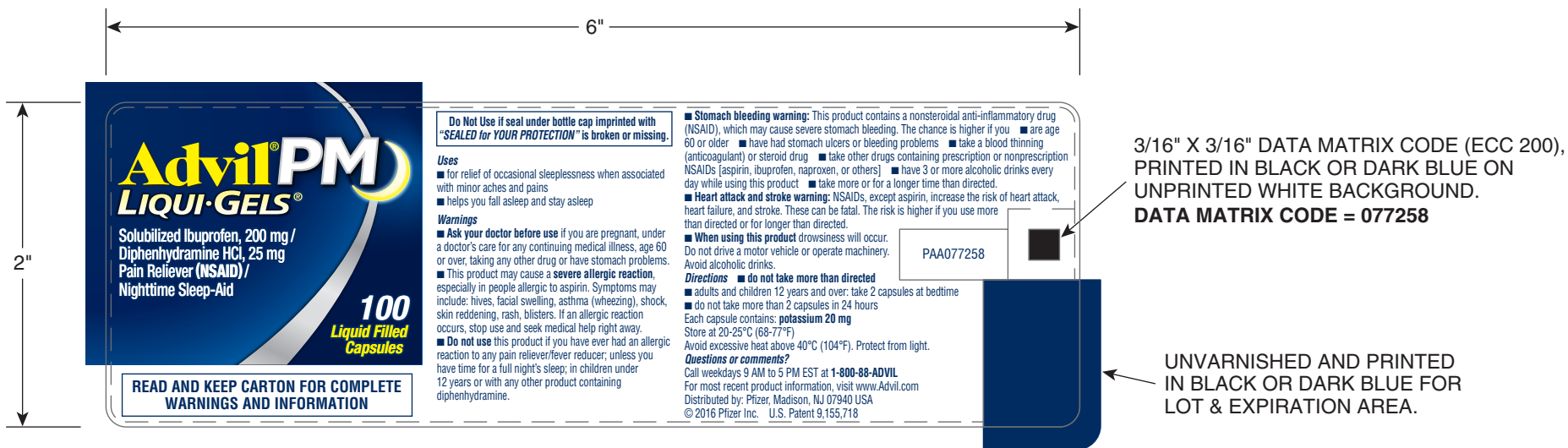
090177e189bcf09e\Final\Final On: 29-Sep-2016 02:04

## PRODUCTION (NOT COLOR ACCURATE)

Job Information	Color Legend
Date 22-SEP-2016 PASS # 1 Component # PAA080264 Drawing # DWG-00000431v01	(b) (4)
Identification	
Madison Artwork & Packaging Center One Giralda Farms, Madison, NJ 07940 Phone: (973) 660-5000	
Vendor Identification	
Madison Artwork & Packaging Center Graphic Artist: (b) (4)	
Printer & User Notes	
PRINTER TO REPLACE ALL FPO CODES WITH SCANNABLE ART. PRINTER RESPONSIBLE FOR ALL TRAPPING, BLEEDS, COATINGS AND RESOLUTION. PRINTER AND USERS RESPONSIBLE FOR PROPER LICENSING OF ALL FONTS USED IN THIS ARTWORK.	

DRUG FACTS TEXT DEFINED	TYPE SIZE
• DRUG FACTS TITLE	9.0 pt
• DRUG FACTS CONTINUED	8.0 pt
• HEADINGS	8.0 pt
• SUBHEADINGS/BODY TEXT	6.0 pt
• LEADING	6.5 pt
• # OF CHARACTERS PER INCH	<39
• BULLETS	5.0 pt
• SPACE BEFORE BULLET	2 ems
• BARLINES, HAIRLINES	1.5 pt, .5 pt
• SPACE BETWEEN HAIRLINES AND BOX END	2 spaces


**Printer Notes:**  
FPO Silver Foil is only representative of Foil Stamp. Do not separate or print.



090177e18affc238\Final\Final On: 06-Jan-2017 21:22

## PRODUCTION

(NOT COLOR ACCURATE)

Job Information	Color Legend
Date 08-NOV-2016 PASS # 1 Component # PAA077258 Drawing # DWG-00000507v02	(b) (4)
<b>Identification</b>  Madison Artwork & Packaging Center One Giralda Farms, Madison, NJ 07940 Phone: (973) 660-5000	
<b>Vendor Identification</b> Madison Artwork & Packaging Center Graphic Artist: (b) (4)	<b>Printer &amp; User Notes</b> PRINTER TO REPLACE ALL FPO CODES WITH SCANNABLE ART. PRINTER RESPONSIBLE FOR ALL TRAPPING, BLEEDS, COATINGS AND RESOLUTION. PRINTER AND USERS RESPONSIBLE FOR PROPER LICENSING OF ALL FONTS USED IN THIS ARTWORK.

DRUG FACTS TEXT DEFINED	TYPE SIZE
• HEADINGS	5.5 pt
• SUBHEADINGS/BODY TEXT	5.5 pt
• LEADING	6 pt
• BULLETS	4.5 pt
• SPACE BEFORE BULLET	2 ems
• WARNING BOX LINE, HAIRLINES	.5 pt



128 CODE AREA - SUBSET C 10 MIL DENSITY WITH 4 OR 6 DIGITS  
(CODE TO EXTEND TO EDGE OF FLAP - UNVARNISHED) -  
PRINTED SIDE OF CARTON

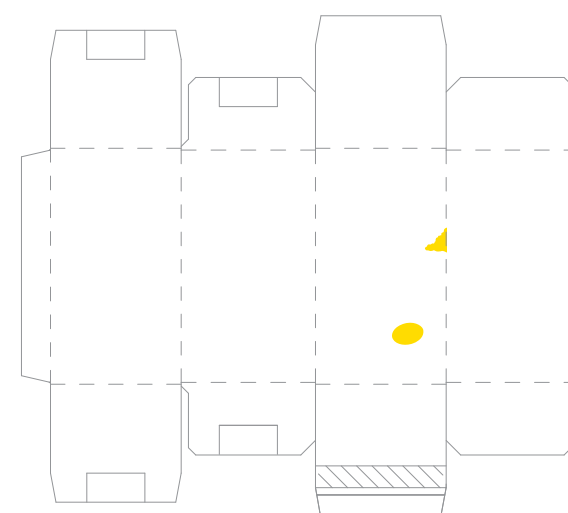
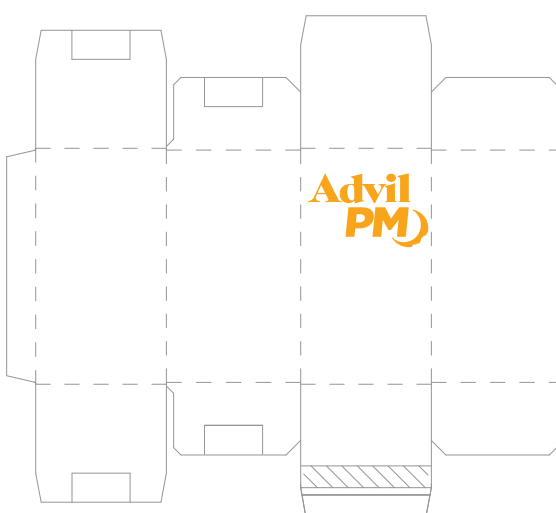
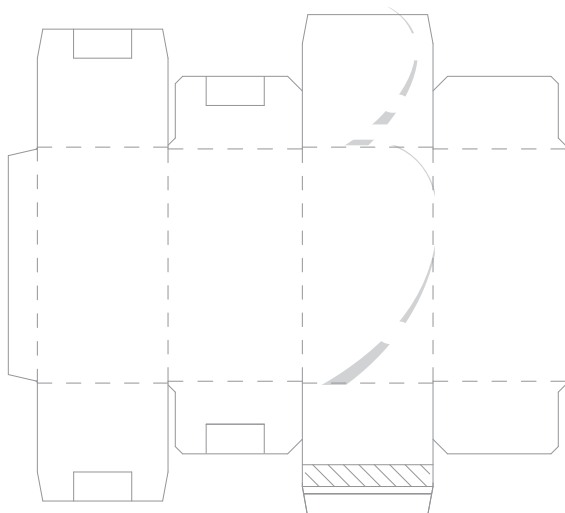
UNPRINTED AREA FOR DATE & LOT  
CODING (UNVARNISHED)

PRINTED AREA FOR DATE & LOT  
LASER CODING (VARNISHED)

Silver Foil Stamp  
Full size file on Silver Foil layer

Embossing - #1  
Full size file on Emboss layer

Embossing - #2 sculptured  
Full size file on Emboss layer



## PRODUCTION

(NOT COLOR ACCURATE)

Job Information	Color Legend
Date 22-FEB-2017 PASS # 1 Component # PAA085999 Drawing # DWG-00000431v02	(b) (4)
Identification	
Consumer Healthcare Madison Artwork & Packaging Center One Giralda Farms, Madison, NJ 07940 Phone: (973) 660-5000	<b>Printer &amp; User Notes</b> PRINTER TO REPLACE ALL FPO CODES WITH SCANNABLE ART. PRINTER RESPONSIBLE FOR ALL TRAPPING, BLEEDS, COATINGS AND RESOLUTION. PRINTER AND USERS RESPONSIBLE FOR PROPER LICENSING OF ALL FONTS USED IN THIS ARTWORK.
Vendor Identification	
Madison Artwork & Packaging Center Reference ID: (b) (4)	

DRUG FACTS TEXT DEFINED	TYPE SIZE
• DRUG FACTS TITLE	9 pt
• DRUG FACTS CONTINUED	8 pt
• HEADINGS	8 pt
• SUBHEADINGS/BODY TEXT	6 pt
• LEADING	6.5 pt
• # OF CHARACTERS PER INCH	<39
• BULLETS	5 pt
• SPACE BEFORE BULLET	2 ems
• BARLINES, HAIRLINES	1.5 pt, .5 pt
• SPACE BETWEEN HAIRLINES AND BOX END	2 spaces

### Printer Notes:

FPO Silver Foil is only representative  
of Foil Stamp. Do not separate or print.