

BACK

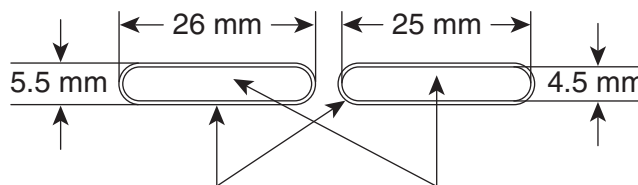


SEAL AREA FOR LOT & EXP
25 mm x 4.5 mm

AREA FOR LOT AND EXP
TO BE PRINTED IN DARK COLOR
26 mm x 5.5 mm

128 CODE = 080261

FOR BACK ONLY



AREA FOR LOT AND EXP
TO BE PRINTED IN DARK COLOR
26 mm x 5.5 mm
(OUTER OVAL)

SEAL AREA FOR LOT & EXP
25 mm x 4.5 mm
(INNER OVAL)

PRODUCTION

(NOT COLOR ACCURATE)

(b) (4)



DRUG FACTS TEXT DEFINED	TYPE SIZE
• HEADINGS	4.5 pt
• SUBHEADINGS/BODY TEXT	4.5 pt
• LEADING	4.5 pt
• BULLETS	3.5 pt
• SPACE BEFORE BULLET	2 ems
• WARNING BOX LINE, HAIRLINES	N/A

090177e189be697a\Final\Final On: 29-Sep-2016 17:50

HIGH DENSITY CODE 128. SUBSET C, 10 MIL DENSITY. MUST SCAN AT GRADE A OR B ACCORDING TO ANSI STANDARDS. DARK CODE ON LIGHT BACKGROUND. (NO VARNISH)



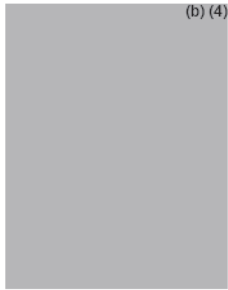
GLUE FLAP (NO VARNISH)

WHITE HOLDOUT (NO VARNISH)

HIGH DENSITY CODE 128. SUBSET C, 10 MIL DENSITY. MUST SCAN AT GRADE A OR B ACCORDING TO ANSI STANDARDS. DARK CODE ON LIGHT BACKGROUND. (NO VARNISH)

PRODUCTION (NOT COLOR ACCURATE) (b) (4)

DRUG FACTS MODIFIED TEXT DEFINED	TYPE SIZE
• DRUG FACTS TITLE	9 pt
• DRUG FACTS CONTINUED	8 pt
• HEADINGS	8 pt
• SUBHEADINGS/BODY TEXT	6 pt
• LEADING	6.5 pt
• # OF CHARACTERS PER INCH	<39
• BULLETS	5 pt
• SPACE BEFORE BULLET	2 ems
• BARLINES, HAIRLINES	1.5 pt, .5 pt
• SPACE BETWEEN HAIRLINES AND BOX END	2 spaces



AdvilPM
 ibuprofen, 200 mg /
 Diphenhydramine citrate, 38 mg
 Pain Reliever (NSAID)/
 Nighttime Sleep-Aid
 20 Caplets

Uses ■ For relief of occasional sleeplessness when associated with minor aches and pains ■ helps you fall asleep and stay asleep

Warnings ■ Ask your doctor before use if you are pregnant, under a doctor's care for any continuing medical illness, age 60 or over, taking any other drug or have stomach problems.

Do Not Use if seal under bottle cap imprinted with "SEALED for YOUR PROTECTION" is broken or missing.

■ This product may cause a severe allergic reaction, especially in people allergic to aspirin. Symptoms may include: hives, facial swelling, asthma (wheezing), shock, skin reddening, rash, blisters. If an allergic reaction occurs, stop use and seek medical help right away.

PAA080145

READ AND KEEP CARTON FOR COMPLETE WARNINGS AND INFORMATION

TOP PANEL 1

KISS CUT

UNVARNISHED AND PRINTED IN BLACK OR DARK BLUE FOR LOT & EXPIRATION AREA.

3/16" X 3/16" DATA MATRIX CODE (ECC 200), PRINTED IN BLACK OR DARK BLUE ON UNPRINTED WHITE BACKGROUND.
 DATA MATRIX CODE = 080145

F.P.O. PEEL HERE AREA

LIFT HERE For More Drug Facts

When using this product drowsiness will occur. Do not drive a motor vehicle or operate machinery. Avoid alcoholic drinks.

Directions ■ do not take more than directed ■ adults and children 12 years and over: take 2 caplets at bedtime ■ do not take more than 2 caplets in 24 hours
 Store at 20-25°C (68-77°F)
 Avoid excessive heat above 40°C (104°F)

Questions or comments? Call weekdays 9 AM to 5 PM EST 1-800-88-ADVIL
 For most recent product information, visit www.Advii.com.
 Pfizer, Madison, NJ 07940 USA U.S. Patent 8,263,647 © 2016 Pfizer Inc.

BASE PANEL 3

3/8" HINGE AREA UNVARNISHED

■ Do not use this product if you have ever had an allergic reaction to any pain reliever/fever reducer; unless you have time for a full night's sleep; in children under 12 years or with any other product containing diphenhydramine.

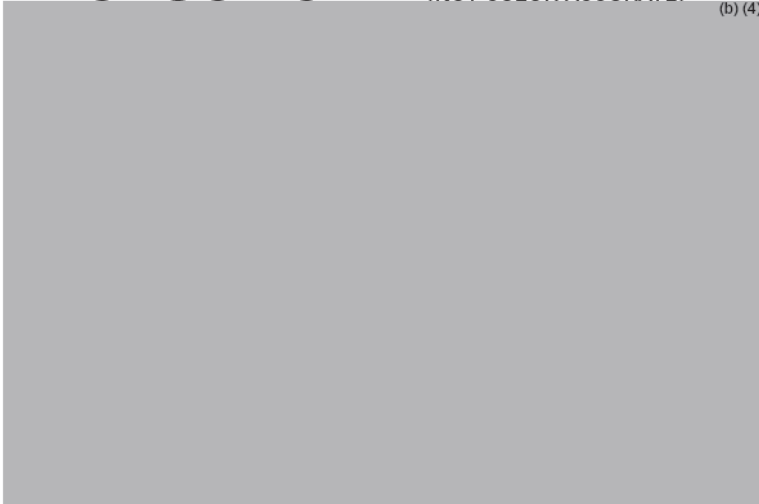
■ **Stomach bleeding warning:** This product contains a nonsteroidal anti-inflammatory drug (NSAID), which may cause severe stomach bleeding. The chance is higher if you ■ are age 60 or older ■ have had stomach ulcers or bleeding problems ■ take a blood thinning (anticoagulant) or steroid drug ■ take other drugs containing prescription or nonprescription NSAIDs (aspirin, ibuprofen, naproxen, or others) ■ have 3 or more alcoholic drinks every day while using this product ■ take more or for a longer time than directed.

■ **Heart attack and stroke warning:** NSAIDs, except aspirin, increase the risk of heart attack, heart failure, and stroke. These can be fatal. The risk is higher if you use more than directed or for longer than directed.

RELEASED BACK PANEL 2

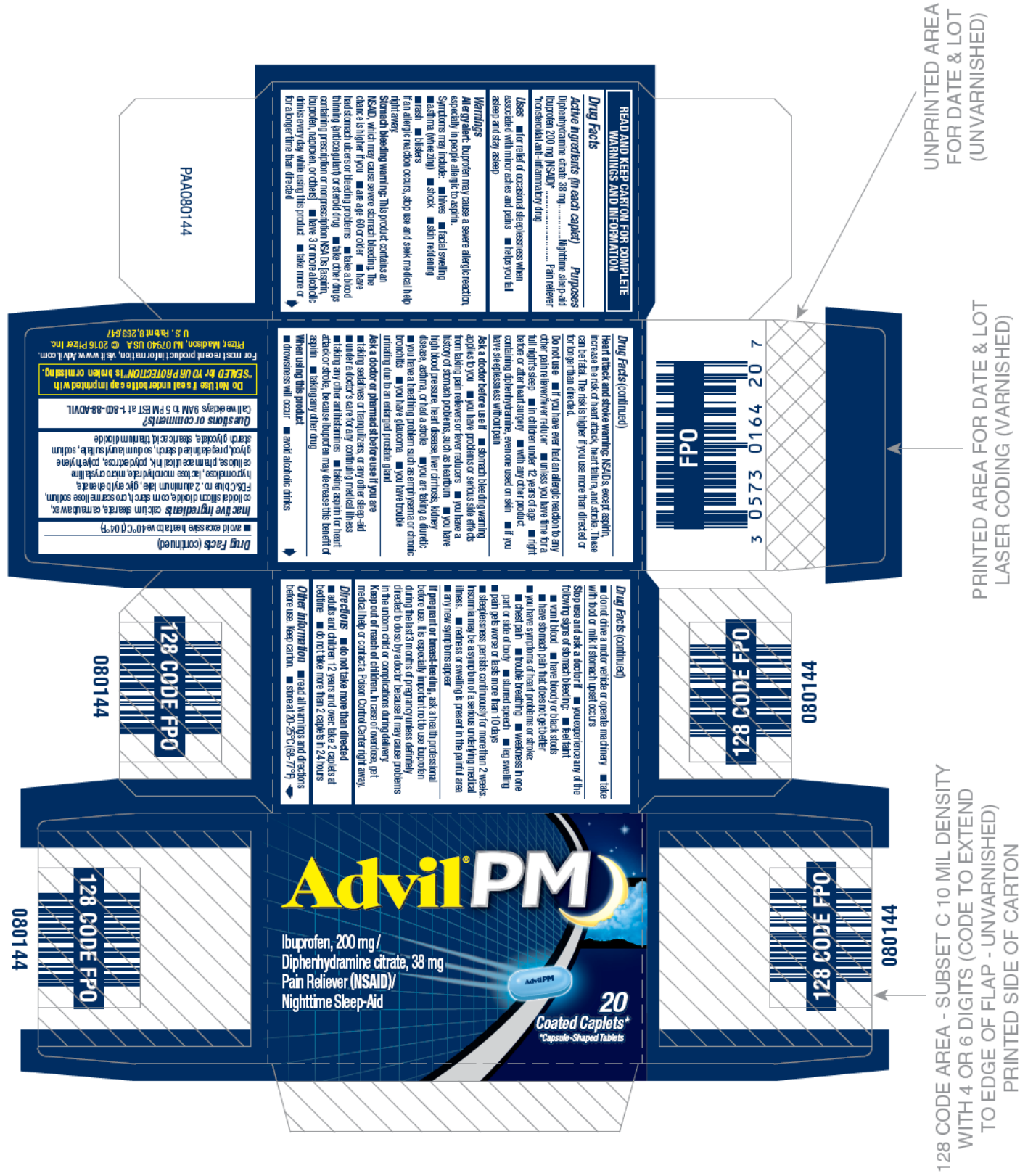
3/8" HINGE AREA UNVARNISHED

PRODUCTION (NOT COLOR ACCURATE)

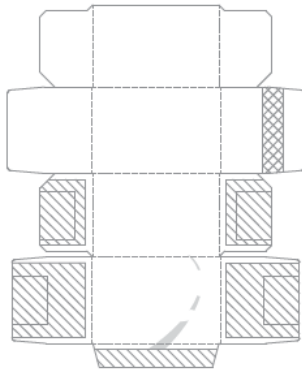


DRUG FACTS TEXT DEFINED	TYPE SIZE
• HEADINGS	6 pt
• SUBHEADINGS/BODY TEXT	6 pt
• LEADING	6.3 pt
• BULLETS	5 pt
• SPACE BEFORE BULLET	2 ems
• WARNING BOX LINE, HAIRLINES	.5 pt

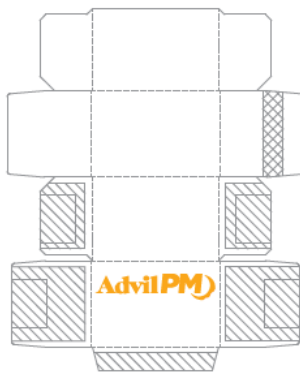
090177e189be80fa\Final\Final On: 29-Sep-2016 19:09



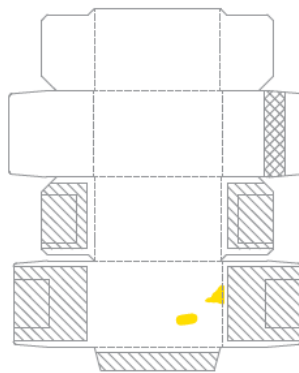
Silver Foil Stamp
Full size file on Silver Foil layer



Embossing
Full size file on Emboss layer



Embossing - 2nd level
Full size file on Emboss layer



PRODUCTION

(NOT COLOR ACCURATE)

(b) (4)

DRUG FACTS MODIFIED TEXT DEFINED	TYPE SIZE
• DRUG FACTS TITLE	8 pt
• DRUG FACTS CONTINUED	7 pt
• HEADINGS	7 pt
• SUBHEADINGS/BODY TEXT	6 pt
• LEADING	6.25 pt
• # OF CHARACTERS PER INCH	<39
• BULLETS	5 pt
• SPACE BEFORE BULLET	2 ems
• BARLINES, HAIRLINES	1.5 pt, .5 pt
• SPACE BETWEEN HAIRLINES AND BOX END	2 spaces

Printer Notes:
FPO Silver Foil is only representative of Foil Stamp. Do not separate or print.

TOP PANEL 1

NO COPY 1/16" (0.0625") FROM DIE. DOTTED LINE FOR HOLDING ONLY AND DOES NOT PRINT.

KISS CUT

Easy Open ARTHRITIS CAP
Arthritis Foundation Ease of Use CAP

THIS PACKAGE FOR HOUSEHOLDS WITHOUT YOUNG CHILDREN

Advil PM

Ibuprofen, 200 mg / Diphenhydramine citrate, 38 mg
Pain Reliever (NSAID) / Nighttime Sleep-Aid

120 Coated Caplets*
*Capsule-Shaped Tablets

Do Not Use if seal under bottle cap Imprinted with "SEALED for YOUR PROTECTION" is broken or missing.

Drug Facts

Active ingredients (in each caplet) **Purposes**
Diphenhydramine citrate 38 mg Nighttime sleep-aid
Ibuprofen 200 mg (NSAID)* Pain reliever
*nonsteroidal anti-inflammatory drug

Uses
■ for relief of occasional sleeplessness when associated with minor aches and pains
■ helps you fall asleep and stay asleep

Warnings
Allergy alert: Ibuprofen may cause a severe allergic reaction, especially in people allergic to aspirin. Symptoms may include:
■ hives ■ facial swelling ■ asthma (wheezing)
■ shock ■ skin reddening ■ rash ■ blisters
If an allergic reaction occurs, stop use and seek medical help right away.

PAA080436

FPO 3 0 5 7 3 0 1 6 4 6 5 8

LIFT HERE For More Drug Facts

ART BLEEDS OFF 1/16" (0.0625") OUT FROM DIE. DOTTED LINE FOR HOLDING ONLY AND DOES NOT PRINT.

THIS LINE INDICATES DIE AND DOES NOT PRINT.

3/16" X 3/16" DATA MATRIX CODE (ECC 200), PRINTED IN BLACK OR DARK BLUE ON UNPRINTED WHITE BACKGROUND. DATA MATRIX CODE = 080436

(b) (4)

FOR LOT & EXPIRATION AREA. UNVARNISHED AND PRINTED IN BLACK OR DARK BLUE.

BASE PANEL 3

3/8" HINGE AREA UNVARNISHED (LINES DO NOT PRINT)

Drug Facts (continued)

When using this product
■ drowsiness will occur ■ avoid alcoholic drinks
■ do not drive a motor vehicle or operate machinery
■ take with food or milk if stomach upset occurs

Stop use and ask a doctor if
■ you experience any of the following signs of stomach bleeding:
■ feel faint ■ vomit blood ■ have bloody or black stools
■ have stomach pain that does not get better
■ you have symptoms of heart problems or stroke:
■ chest pain ■ trouble breathing
■ weakness in one part or side of body
■ slurred speech ■ leg swelling
■ pain gets worse or lasts more than 10 days
■ sleeplessness persists continuously for more than 2 weeks.
Insomnia may be a symptom of a serious underlying medical illness.
■ redness or swelling is present in the painful area
■ any new symptoms appear

If pregnant or breast-feeding, ask a health professional before use. It is especially important not to use ibuprofen during the last 3 months of pregnancy unless definitely directed to do so by a doctor because it may cause problems in the unborn child or complications during delivery.

Drug Facts (continued)

Keep out of reach of children. In case of overdose, get medical help or contact a Poison Control Center right away.

Directions ■ do not take more than directed
■ adults and children 12 years and over: take 2 caplets at bedtime
■ do not take more than 2 caplets in 24 hours

Other information ■ read all warnings and directions before use.
■ store at 20-25°C (68-77°F)
■ avoid excessive heat above 40°C (104°F)

Inactive ingredients
calcium stearate, carnauba wax, colloidal silicon dioxide, corn starch, croscarmellose sodium, FD&C blue no. 2 aluminum lake, glyceryl behenate, hypromellose, lactose monohydrate, microcrystalline cellulose, pharmaceutical ink, polydextrose, polyethylene glycol, pregelatinized starch, sodium lauryl sulfate, sodium starch glycolate, stearic acid, titanium dioxide

Questions or comments?
Call weekdays 9 AM to 5 PM EST at 1-800-88-ADVIL

For most recent product information, visit www.Advii.com.
Pfizer, Madison, NJ 07940 USA © 2016 Pfizer Inc. U.S. Patent 8,263,647

ART BLEEDS OFF 1/16" (0.0625") OUT FROM DIE. DOTTED LINE FOR HOLDING ONLY AND DOES NOT PRINT.

THIS LINE INDICATES DIE AND DOES NOT PRINT.

NO COPY 1/16" (0.0625") FROM DIE. DOTTED LINE FOR HOLDING ONLY AND DOES NOT PRINT.

(b) (4)

RELEASED BACK PANEL 2

3/8" HINGE AREA UNVARNISHED (LINES DO NOT PRINT)

Drug Facts (continued)

Stomach bleeding warning: This product contains an NSAID, which may cause severe stomach bleeding. The chance is higher if you
■ are age 60 or older
■ have had stomach ulcers or bleeding problems
■ take a blood thinning (anticoagulant) or steroid drug
■ take other drugs containing prescription or nonprescription NSAIDs (aspirin, ibuprofen, naproxen, or others)
■ have 3 or more alcoholic drinks every day while using this product
■ take more or for a longer time than directed

Heart attack and stroke warning: NSAIDs, except aspirin, increase the risk of heart attack, heart failure, and stroke. These can be fatal. The risk is higher if you use more than directed or for longer than directed.

Do not use
■ if you have ever had an allergic reaction to any other pain reliever/fever reducer
■ unless you have time for a full night's sleep
■ in children under 12 years of age ■ right before or after heart surgery
■ with any other product containing diphenhydramine, even one used on skin
■ if you have sleeplessness without pain

Drug Facts (continued)

Ask a doctor before use if
■ stomach bleeding warning applies to you
■ you have problems or serious side effects from taking pain relievers or fever reducers
■ you have a history of stomach problems, such as heartburn
■ you have high blood pressure, heart disease, liver cirrhosis, kidney disease, asthma, or had a stroke
■ you are taking a diuretic
■ you have a breathing problem such as emphysema or chronic bronchitis
■ you have glaucoma
■ you have trouble urinating due to an enlarged prostate gland

Ask a doctor or pharmacist before use if you are
■ taking sedatives or tranquilizers, or any other sleep-aid
■ under a doctor's care for any continuing medical illness
■ taking any other antihistamines
■ taking aspirin for heart attack or stroke, because ibuprofen may decrease this benefit of aspirin
■ taking any other drug

ART BLEEDS OFF 1/16" (0.0625") OUT FROM DIE. DOTTED LINE FOR HOLDING ONLY AND DOES NOT PRINT.

THIS LINE INDICATES DIE AND DOES NOT PRINT.

NO COPY 1/16" (0.0625") FROM DIE. DOTTED LINE FOR HOLDING ONLY AND DOES NOT PRINT.

(b) (4)

e9148\Final\Final On: 29-Sep-2016 19:05

PRODUCTION

(NOT COLOR ACCURATE)

(b) (4)

DRUG FACTS MODIFIED TEXT DEFINED	TYPE SIZE
• DRUG FACTS TITLE	9 pt
• DRUG FACTS CONTINUED	8 pt
• HEADINGS	8 pt
• SUBHEADINGS/BODY TEXT	6 pt
• LEADING	6.5 pt
• # OF CHARACTERS PER INCH	<39
• BULLETS	5 pt
• SPACE BEFORE BULLET	2 ems
• BARLINES, HAIRLINES	1.5 pt, .5 pt
• SPACE BETWEEN HAIRLINES AND BOX END	2 spaces

Silver Foil Stamp
Full size file on Silver Foil layer
Must open file with Illustrator
TOP PANEL 1



Printer Notes:
FPO Silver Foil is only representative of Foil Stamp. Do not separate or print.

Glue Bead Location

Working Score

Glue Bead Location

Glue Bead

Glue Bead

Plaza, Madison, NJ 07940 USA
© 2016 Pfizer Inc.
US: Pfl18, 253, 647

Do Not Use If pouch is broken or torn.
For most recent product information, visit www.Advii.com.

Drug Facts (continued)

Drug Facts (continued)

Take a doctor or pharmacist's advice when you use this product. Do not use if you are allergic to any of the ingredients. Do not use if you are pregnant, planning to get pregnant, or are breastfeeding. Do not use if you are taking any other medicine. Do not use if you are taking any other medicine. Do not use if you are taking any other medicine.

Warnings

Do not use if you are pregnant, planning to get pregnant, or are breastfeeding. Do not use if you are taking any other medicine. Do not use if you are taking any other medicine. Do not use if you are taking any other medicine.

Directions

Take 1 or 2 capsules 2 to 4 times a day. Do not take more than 2 capsules at one time. Do not take more than 2 capsules at one time. Do not take more than 2 capsules at one time.

Other information

Keep this and all other medicines out of the reach of children. Do not use if you are pregnant, planning to get pregnant, or are breastfeeding. Do not use if you are taking any other medicine. Do not use if you are taking any other medicine.

Questions or comments?

Call 1-800-844-4444. Do not use if you are pregnant, planning to get pregnant, or are breastfeeding. Do not use if you are taking any other medicine. Do not use if you are taking any other medicine.

Active ingredients (in each caplet)

Ibuprofen 200 mg
Diphenhydramine citrate 38 mg

Purposes

Pain relief
Sleep aid

Uses

For relief of occasional sleeplessness when associated with minor aches and pains. For relief of occasional sleeplessness when associated with minor aches and pains.

Warnings

Do not use if you are pregnant, planning to get pregnant, or are breastfeeding. Do not use if you are taking any other medicine. Do not use if you are taking any other medicine.

Directions

Take 1 or 2 capsules 2 to 4 times a day. Do not take more than 2 capsules at one time. Do not take more than 2 capsules at one time.

Other information

Keep this and all other medicines out of the reach of children. Do not use if you are pregnant, planning to get pregnant, or are breastfeeding. Do not use if you are taking any other medicine. Do not use if you are taking any other medicine.

Questions or comments?

Call 1-800-844-4444. Do not use if you are pregnant, planning to get pregnant, or are breastfeeding. Do not use if you are taking any other medicine. Do not use if you are taking any other medicine.

128 CODE AREA - SUBSET C 10 MIL DENSITY WITH 4 OR 6 DIGITS (UNVARNISHED) 128 CODE = 080262

Advil[®] PM

Ibuprofen, 200 mg /
Diphenhydramine citrate, 38 mg
Pain Reliever (NSAID)/
Nighttime Sleep-Aid

Coated Caplets*
*Capsule-Shaped Tablets

Advil[®] PM

Ibuprofen, 200 mg /
Diphenhydramine citrate, 38 mg
Pain Reliever (NSAID)/
Nighttime Sleep-Aid

Coated Caplets*
*Capsule-Shaped Tablets

- ✓ For relief of occasional sleeplessness when associated with minor aches and pains
- ✓ Helps you fall asleep and stay asleep

50 PACKETS OF 2 COATED CAPLETS*
*Capsule-Shaped Tablets

Advil[®] PM

Ibuprofen, 200 mg /
Diphenhydramine citrate, 38 mg
Pain Reliever (NSAID)/
Nighttime Sleep-Aid

Coated Caplets*
*Capsule-Shaped Tablets

- ✓ For relief of occasional sleeplessness when associated with minor aches and pains
- ✓ Helps you fall asleep and stay asleep

See full Drug Facts information on the back of this dispenser

50 PACKETS OF 2 COATED CAPLETS*
*Capsule-Shaped Tablets

Advil[®] PM

Ibuprofen, 200 mg /
Diphenhydramine citrate, 38 mg
Pain Reliever (NSAID)/
Nighttime Sleep-Aid

Coated Caplets*
*Capsule-Shaped Tablets

- ✓ For relief of occasional sleeplessness when associated with minor aches and pains
- ✓ Helps you fall asleep and stay asleep

50 PACKETS OF 2 COATED CAPLETS*
*Capsule-Shaped Tablets

LASER ETCHING AREA FOR LOT & EXP. PRINT A SOLID DARK COLOR.

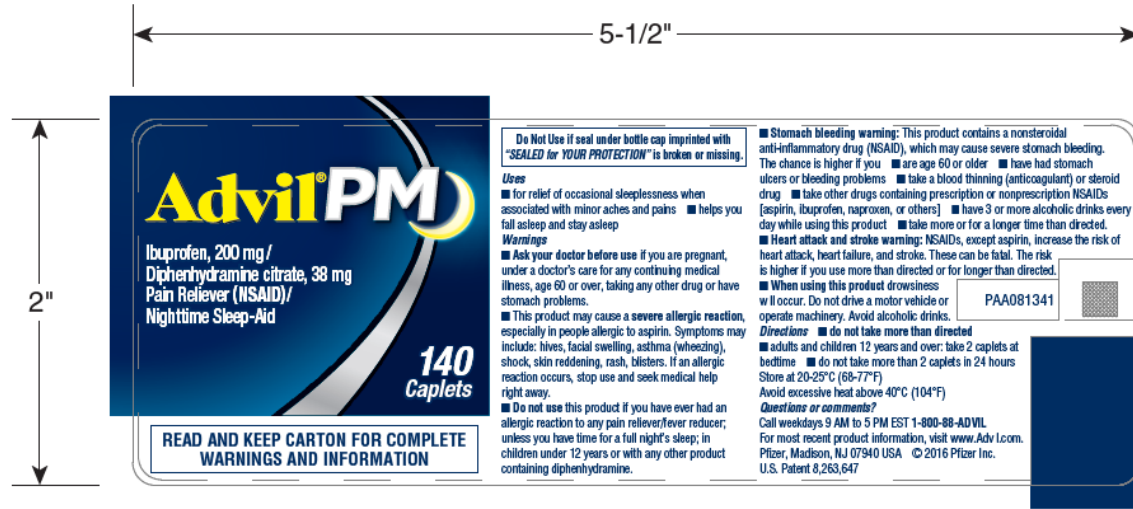
FPO

3 0573 0164 55 9

090177e189he8d00Final On: 29-Sep-2016 19:08

PRODUCTION (NOT COLOR ACCURATE)

DRUG FACTS MODIFIED TEXT DEFINED	TYPE SIZE
• DRUG FACTS TITLE	9 pt
• DRUG FACTS CONTINUED	8 pt
• HEADINGS	8 pt
• SUBHEADINGS/BODY TEXT	6 pt
• LEADING	6.5 pt
• # OF CHARACTERS PER INCH	<39
• BULLETS	5 pt
• SPACE BEFORE BULLET	2 ems
• BARLINES, HAIRLINES	1.5 pt, .5 pt
• SPACE BETWEEN HAIRLINES AND BOX END	2 spaces



3/16" X 3/16" DATA MATRIX CODE (ECC200),
 PRINTED IN BLACK OR DARK BLUE ON
 UNPRINTED WHITE BACKGROUND.
DATA MATRIX CODE = 081341

UNVARNISHED AND PRINTED
 IN BLACK OR DARK BLUE.
 FOR LOT & EXPIRATION AREA.

090177e18ae0a633\Final\Final On: 19-Dec-2016 16:59

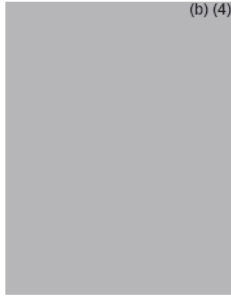
PRODUCTION

(NOT COLOR ACCURATE)

(b) (4)



DRUG FACTS TEXT DEFINED	TYPE SIZE
• HEADINGS	5.5 pt
• SUBHEADINGS/BODY TEXT	5.5 pt
• LEADING	6 pt
• BULLETS	4.5 pt
• SPACE BEFORE BULLET	2 ems
• WARNING BOX LINE, HAIRLINES	.5 pt



TOP PANEL 1

KISS CUT

UNVARNISHED AND PRINTED IN BLACK OR DARK BLUE FOR LOT & EXPIRATION AREA.

3/16" X 3/16" DATA MATRIX CODE (ECC 200), PRINTED IN BLACK OR BLACK BLUE ON UNPRINTED WHITE BACKGROUND.
DATA MATRIX CODE = 081263

F.P.O. PEEL HERE AREA

READ AND KEEP CARTON FOR COMPLETE WARNINGS AND INFORMATION

Uses ■ For relief of occasional sleeplessness when associated with minor aches and pains ■ helps you fall asleep and stay asleep

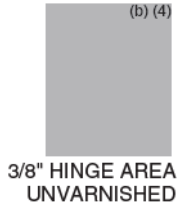
Warnings ■ Ask your doctor before use if you are pregnant, under a doctor's care for any continuing medical illness, age 60 or over, taking any other drug or have stomach problems.

Do Not Use if seal under bottle cap imprinted with "SEALED for YOUR PROTECTION" is broken or missing.

■ This product may cause a severe allergic reaction, especially in people allergic to aspirin. Symptoms may include: hives, facial swelling, asthma (wheezing), shock, skin reddening, rash, blisters. If an allergic reaction occurs, stop use and seek medical help right away.

PAA081263

LIFT HERE For More Drug Facts



BASE PANEL 3

3/8" HINGE AREA UNVARNISHED

■ When using this product drowsiness will occur. Do not drive a motor vehicle or operate machinery. Avoid alcoholic drinks.

Directions ■ do not take more than directed ■ adults and children 12 years and over: take 2 caplets at bedtime ■ do not take more than 2 caplets in 24 hours

Store at 20-25°C (68-77°F)
Avoid excessive heat above 40°C (104°F)

Questions or comments? Call weekdays 9 AM to 5 PM EST 1-800-88-ADVIL
For most recent product information, visit www.Advil.com.

Pfizer, Madison, NJ 07940 USA U.S. Patent 8,263,647 © 2016 Pfizer Inc.



RELEASED BACK PANEL 2

3/8" HINGE AREA UNVARNISHED

■ Do not use this product if you have ever had an allergic reaction to any pain reliever/fever reducer; unless you have time for a full night's sleep; in children under 12 years or with any other product containing diphenhydramine.

■ **Stomach bleeding warning:** This product contains a nonsteroidal anti-inflammatory drug (NSAID), which may cause severe stomach bleeding. The chance is higher if you ■ are age 60 or older ■ have had stomach ulcers or bleeding problems ■ take a blood thinning (anticoagulant) or steroid drug ■ take other drugs containing prescription or nonprescription NSAIDs (aspirin, ibuprofen, naproxen, or others) ■ have 3 or more alcoholic drinks every day while using this product ■ take more or for a longer time than directed.

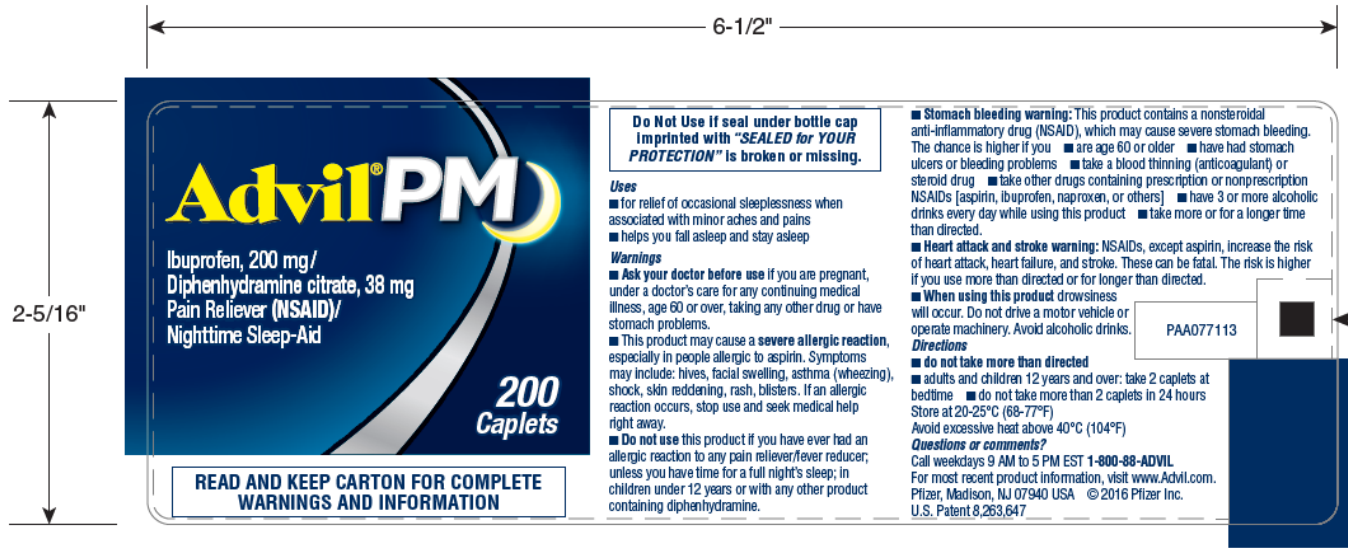
■ **Heart attack and stroke warning:** NSAIDs, except aspirin, increase the risk of heart attack, heart failure, and stroke. These can be fatal. The risk is higher if you use more than directed or for longer than directed.

PRODUCTION (NOT COLOR ACCURATE)



DRUG FACTS TEXT DEFINED	TYPE SIZE
• HEADINGS	6 pt
• SUBHEADINGS/BODY TEXT	6 pt
• LEADING	6.3 pt
• BULLETS	5 pt
• SPACE BEFORE BULLET	2 ems
• WARNING BOX LINE, HAIRLINES	.5 pt

090177e18ae0b00b\Final\Final On: 19-Dec-2016 17:36



090177e18ae08883\Final\Final On: 19-Dec-2016 17:07

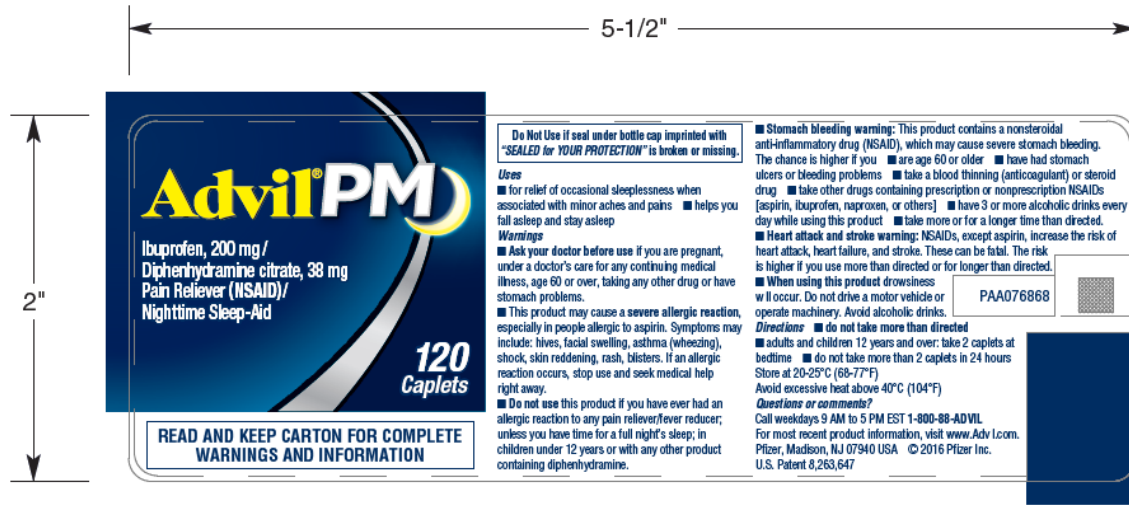
PRODUCTION

(NOT COLOR ACCURATE)

(b) (4)



DRUG FACTS TEXT DEFINED	TYPE SIZE
• HEADINGS	6 pt
• SUBHEADINGS/BODY TEXT	6 pt
• LEADING	6.5 pt
• BULLETS	5 pt
• SPACE BEFORE BULLET	2 ems
• WARNING BOX LINE, HAIRLINES	.5 pt



3/16" X 3/16" DATA MATRIX CODE (ECC200),
 PRINTED IN BLACK OR DARK BLUE ON
 UNPRINTED WHITE BACKGROUND.
DATA MATRIX CODE = 076868

UNVARNISHED AND PRINTED
 IN BLACK OR DARK BLUE.
 FOR LOT & EXPIRATION AREA.

090177e18ae08882\Final\Final On: 19-Dec-2016 16:55

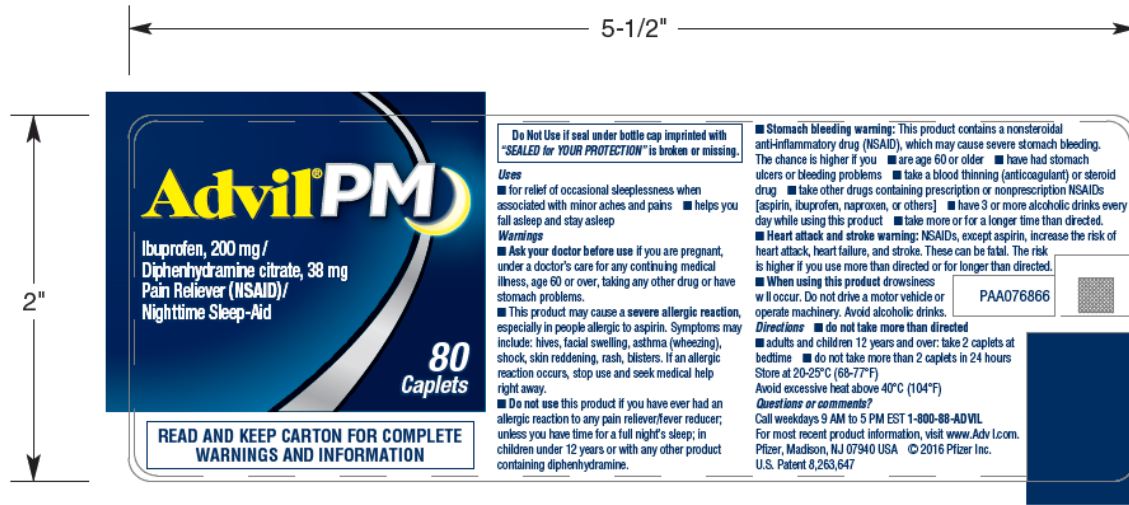
PRODUCTION

(NOT COLOR ACCURATE)

(b) (4)



DRUG FACTS TEXT DEFINED	TYPE SIZE
• HEADINGS	5.5 pt
• SUBHEADINGS/BODY TEXT	5.5 pt
• LEADING	6 pt
• BULLETS	4.5 pt
• SPACE BEFORE BULLET	2 ems
• WARNING BOX LINE, HAIRLINES	.5 pt



3/16" X 3/16" DATA MATRIX CODE (ECC200),
 PRINTED IN BLACK OR DARK BLUE ON
 UNPRINTED WHITE BACKGROUND.
DATA MATRIX CODE = 076866

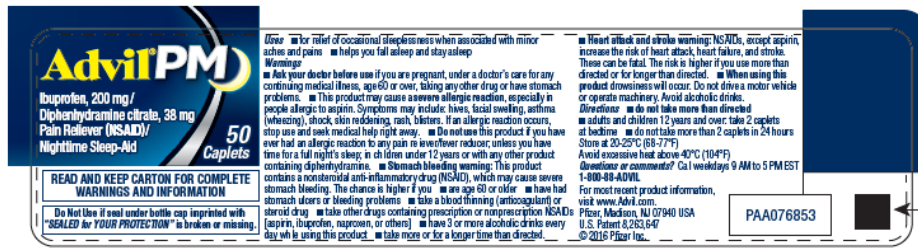
UNVARNISHED AND PRINTED
 IN BLACK OR DARK BLUE.
 FOR LOT & EXPIRATION AREA.

090177e18ae08881\Final\Final On: 19-Dec-2016 17:16



DRUG FACTS TEXT DEFINED	TYPE SIZE
• HEADINGS	5.5 pt
• SUBHEADINGS/BODY TEXT	5.5 pt
• LEADING	6 pt
• BULLETS	4.5 pt
• SPACE BEFORE BULLET	2 ems
• WARNING BOX LINE, HAIRLINES	.5 pt

090177e18ae08880\Final\Final On: 19-Dec-2016 17:14



UNVARNISHED AND PRINTED
 IN BLACK OR DARK BLUE FOR
 LOT & EXPIRATION AREA.

3/16" X 3/16" DATA MATRIX CODE (ECC 200),
 PRINTED IN BLACK OR DARK BLUE ON
 UNPRINTED WHITE BACKGROUND.
 DATA MATRIX CODE = 076853

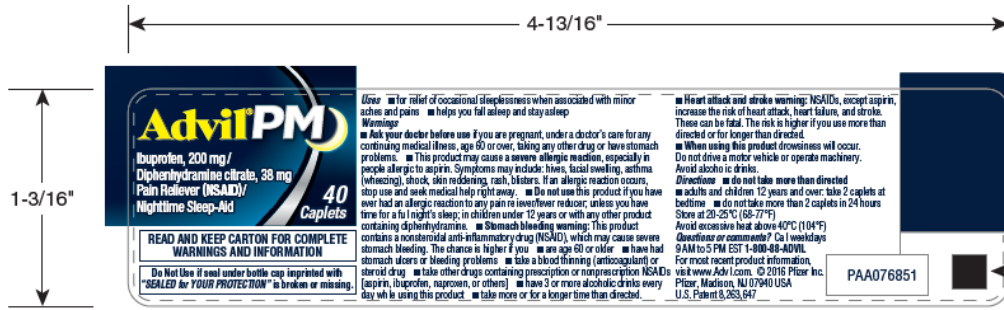
PRODUCTION

(NOT COLOR ACCURATE)

(b) (4)



DRUG FACTS TEXT DEFINED	TYPE SIZE
• HEADINGS	4.5 pt
• SUBHEADINGS/BODY TEXT	4.5 pt
• LEADING	4.5 pt
• BULLETS	3.5 pt
• SPACE BEFORE BULLET	2 ems
• WARNING BOX LINES	.5 pt



UNVARNISHED AND PRINTED
 IN BLACK OR DARK BLUE FOR
 LOT & EXPIRATION AREA.

3/16" X 3/16" DATA MATRIX CODE (ECC 200),
 PRINTED IN BLACK OR DARK BLUE ON
 UNPRINTED WHITE BACKGROUND.
 DATA MATRIX CODE = 076851

090177e18ae089e6\Final\Final On: 19-Dec-2016 17:09

PRODUCTION

(NOT COLOR ACCURATE)

(b) (4)



DRUG FACTS TEXT DEFINED	TYPE SIZE
• HEADINGS	4.5 pt
• SUBHEADINGS/BODY TEXT	4.5 pt
• LEADING	4.5 pt
• BULLETS	3.5 pt
• SPACE BEFORE BULLET	2 ems
• WARNING BOX LINES	.5 pt

HIGH DENSITY CODE 128. SUBSET C, 10 MIL DENSITY.
MUST SCAN AT GRADE A OR B ACCORDING TO ANSI STANDARDS.
DARK CODE ON LIGHT BACKGROUND.
(NO VARNISH)
128 CODE = 081395

3/16" x 3/16" DATA MATRIX CODE
WITH 1/8" QUIET ZONE ON ALL SIDES
DATA MATRIX CODE = 081395



HIGH DENSITY CODE 128. SUBSET C, 10 MIL DENSITY.
MUST SCAN AT GRADE A OR B ACCORDING TO ANSI STANDARDS.
DARK CODE ON LIGHT BACKGROUND.
(NO VARNISH)

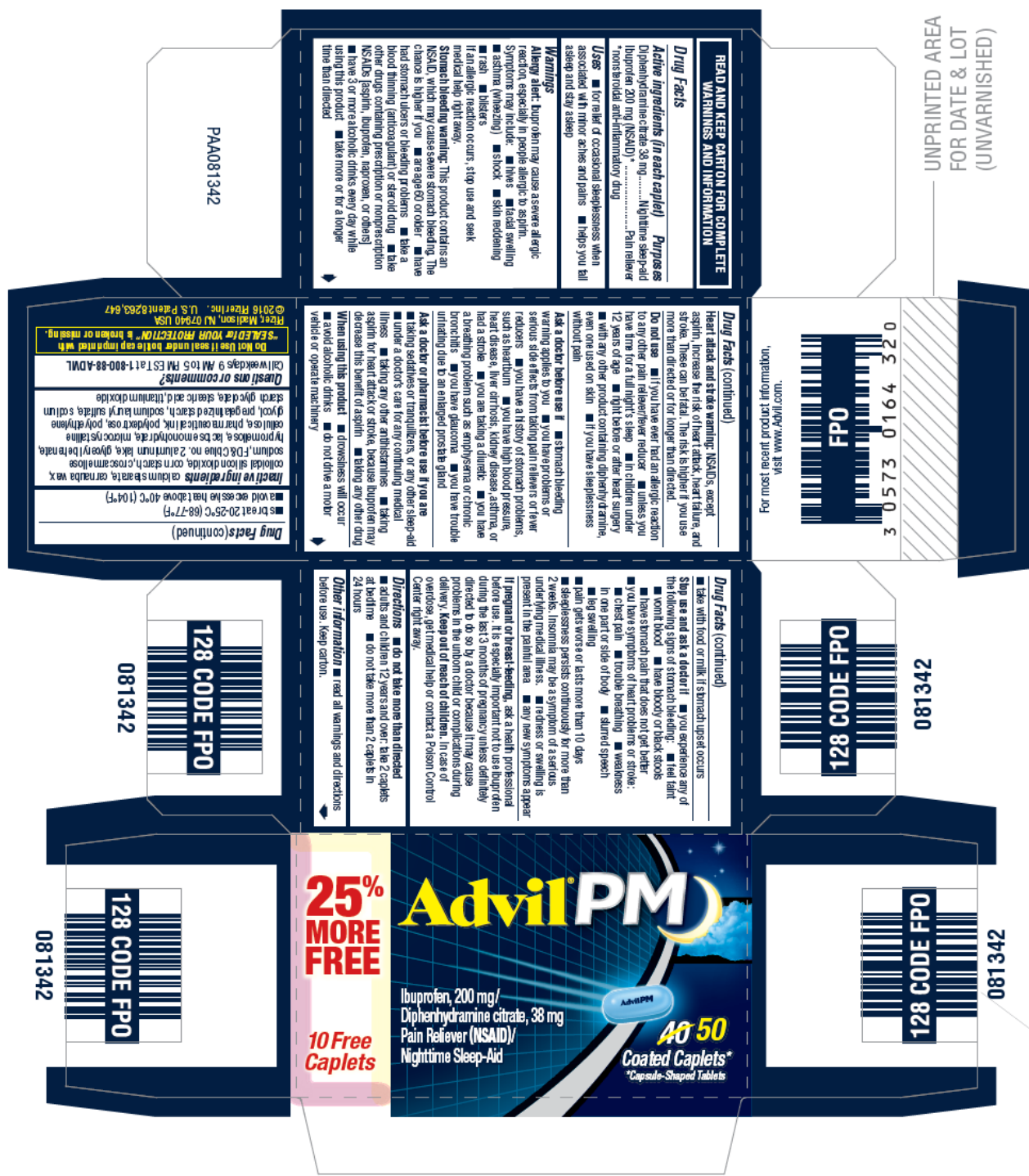
128 CODE = 081395

WHITE HOLDOUT (NO VARNISH)

DRUG FACTS TEXT DEFINED	TYPE SIZE
• DRUG FACTS TITLE	9 pt
• DRUG FACTS CONTINUED	8 pt
• HEADINGS	8 pt
• SUBHEADINGS/BODY TEXT	6 pt
• LEADING	6.5 pt
• # OF CHARACTERS PER INCH	<39
• BULLETS	5 pt
• SPACE BEFORE BULLET	2 ems
• BARLINES, HAIRLINES	1.5 pt, .5 pt
• SPACE BETWEEN HAIRLINES AND BOX END	2 spaces

PRODUCTION (NOT COLOR ACCURATE)

(b) (4)

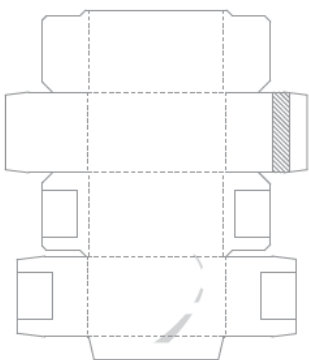


UNPRINTED AREA
FOR DATE & LOT
(UNVARNISHED)

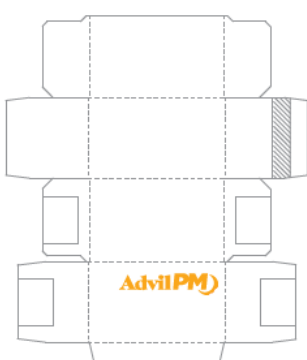
PRINTED AREA
FOR DATE & LOT
LASER CODING
(VARNISHED)

128 CODE AREA - SUBSET C 10 MIL DENSITY
WITH 4 OR 6 DIGITS (CODE TO EXTEND
TO EDGE OF FLAP - UNVARNISHED)
PRINTED SIDE OF CARTON

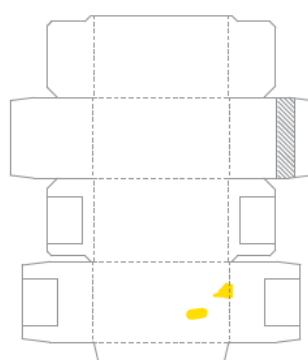
Silver Foil Stamp
Full size file on Silver Foil layer



Embossing - #1
Full size file on Emboss layer



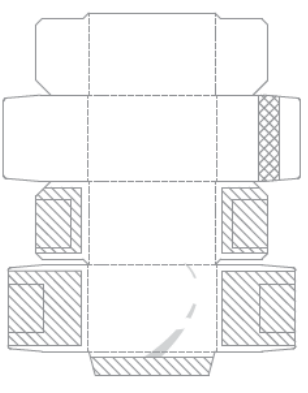
Embossing - #2 sculptured
Full size file on Emboss layer



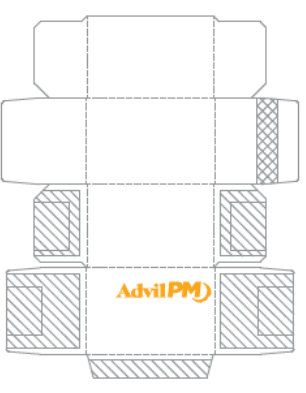
DRUG FACTS MODIFIED TEXT DEFINED	TYPE SIZE
• DRUG FACTS TITLE	8 pt
• DRUG FACTS CONTINUED	7 pt
• HEADINGS	7 pt
• SUBHEADINGS/BODY TEXT	6 pt
• LEADING	6.5 pt
• # OF CHARACTERS PER INCH	<39
• BULLETS	5 pt
• SPACE BEFORE BULLET	2 ems
• BARLINES, HAIRLINES	1.5 pt, .5 pt
• SPACE BETWEEN HAIRLINES AND BOX END	2 spaces

Printer Notes:
FPO Silver Foil is only representative of Foil Stamp. Do not separate or print.

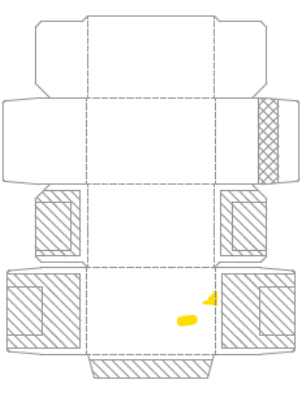
Silver Foil Stamp
Full size file on Silver Foil layer



Embossing
Full size file on Emboss layer



Embossing - 2nd level
Full size file on Emboss layer



PRODUCTION (NOT COLOR ACCURATE)



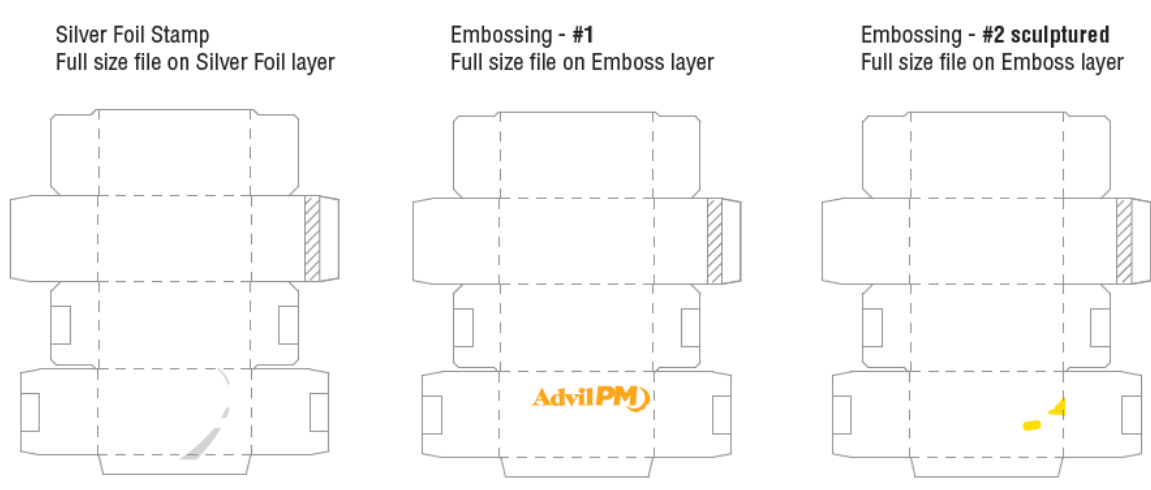
DRUG FACTS MODIFIED TEXT DEFINED	TYPE SIZE
• DRUG FACTS TITLE	8 pt
• DRUG FACTS CONTINUED	7 pt
• HEADINGS	7 pt
• SUBHEADINGS/BODY TEXT	6 pt
• LEADING	6.25 pt
• # OF CHARACTERS PER INCH	<39
• BULLETS	5 pt
• SPACE BEFORE BULLET	2 ems
• BARLINES, HAIRLINES	1.5 pt, .5 pt
• SPACE BETWEEN HAIRLINES AND BOX END	2 spaces



PRINTED AREA FOR DATE & LOT
LASER CODING (VARNISHED)

UNPRINTED AREA FOR DATE & LOT
CODING (UNVARNISHED)

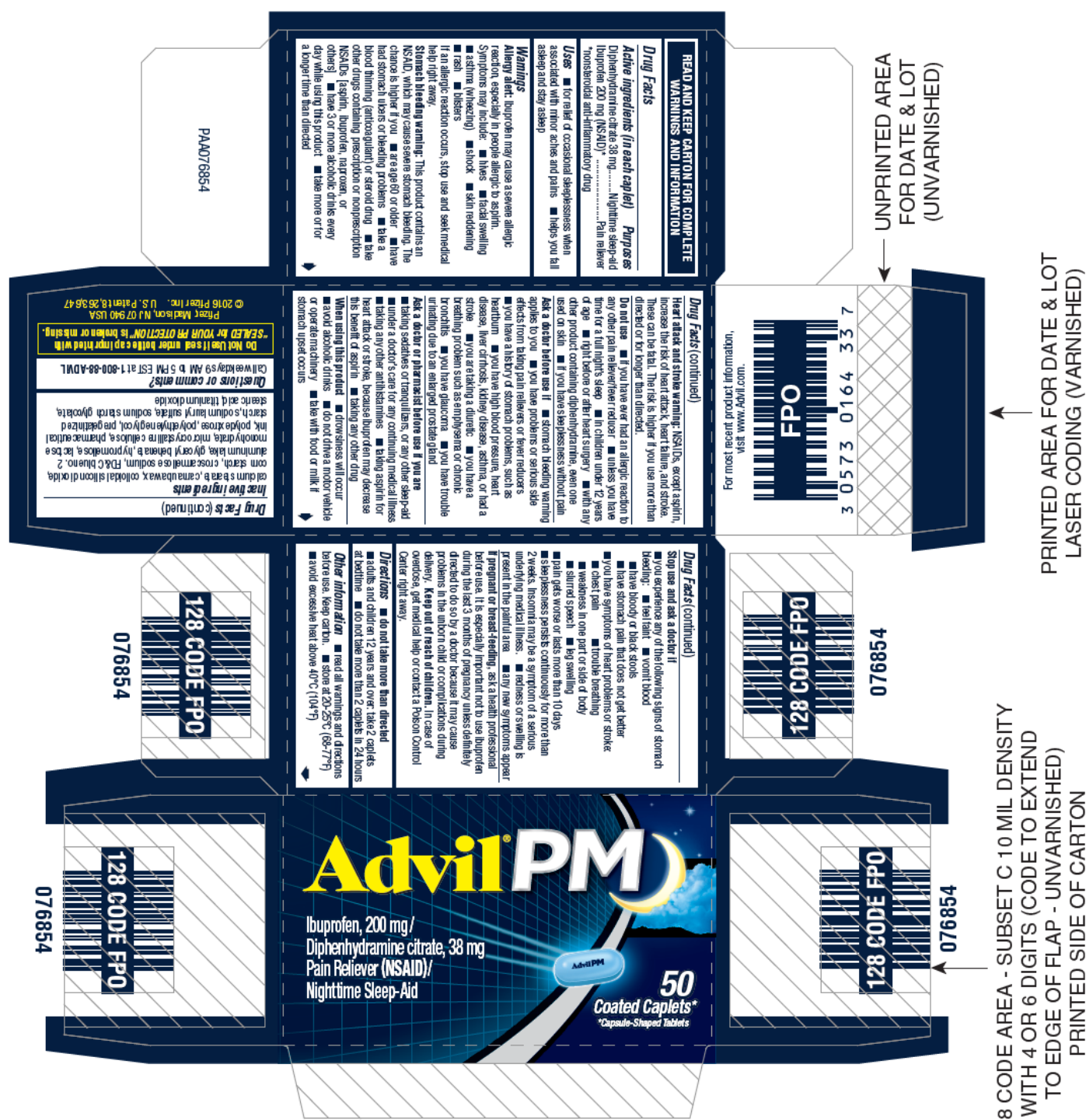
090177e18adf22cb\Final\Final On: 19-Dec-2016 16:56
128 CODE AREA - SUBSET C 10 MIL DENSITY WITH 4 OR 6
DIGITS (CODE TO EXTEND TO EDGE OF FLAP - UNVARNISHED)-
PRINTED SIDE OF CARTON



PRODUCTION (NOT COLOR ACCURATE)

DRUG FACTS MODIFIED TEXT DEFINED	TYPE SIZE
• DRUG FACTS TITLE	9 pt
• DRUG FACTS CONTINUED	8 pt
• HEADINGS	8 pt
• SUBHEADINGS/BODY TEXT	6 pt
• LEADING	6.5 pt
• # OF CHARACTERS PER INCH	<39
• BULLETS	5 pt
• SPACE BEFORE BULLET	2 ems
• BARLINES, HAIRLINES	1.5 pt, .5 pt
• SPACE BETWEEN HAIRLINES AND BOX END	2 spaces

Printer Notes:
FPO Silver Foil is only representative of Foil Stamp. Do not separate or print.



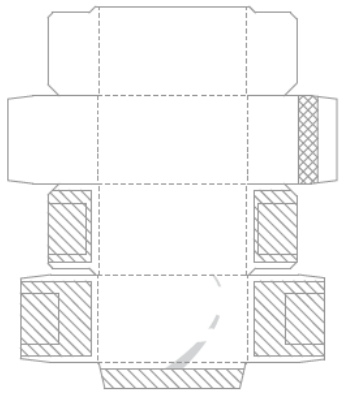
UNPRINTED AREA
(UNVARNISHED)
FOR DATE & LOT

PRINTED AREA FOR DATE & LOT
LASER CODING (VARNISHED)

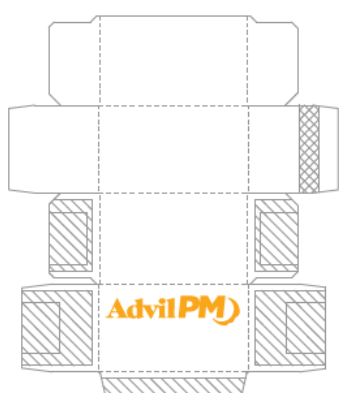
128 CODE AREA - SUBSET C 10 MIL DENSITY
WITH 4 OR 6 DIGITS (CODE TO EXTEND
TO EDGE OF FLAP - UNVARNISHED)
PRINTED SIDE OF CARTON

UNVARNISHED AREAS

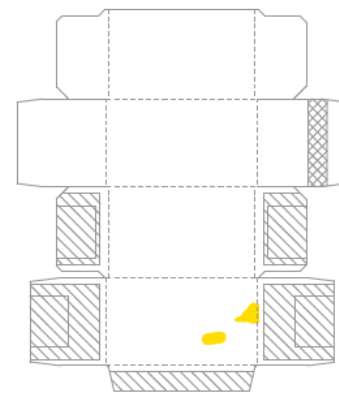
Silver Foil Stamp
Full size file on Silver Foil layer



Embossing
Full size file on Emboss layer



Embossing - 2nd level
Full size file on Emboss layer



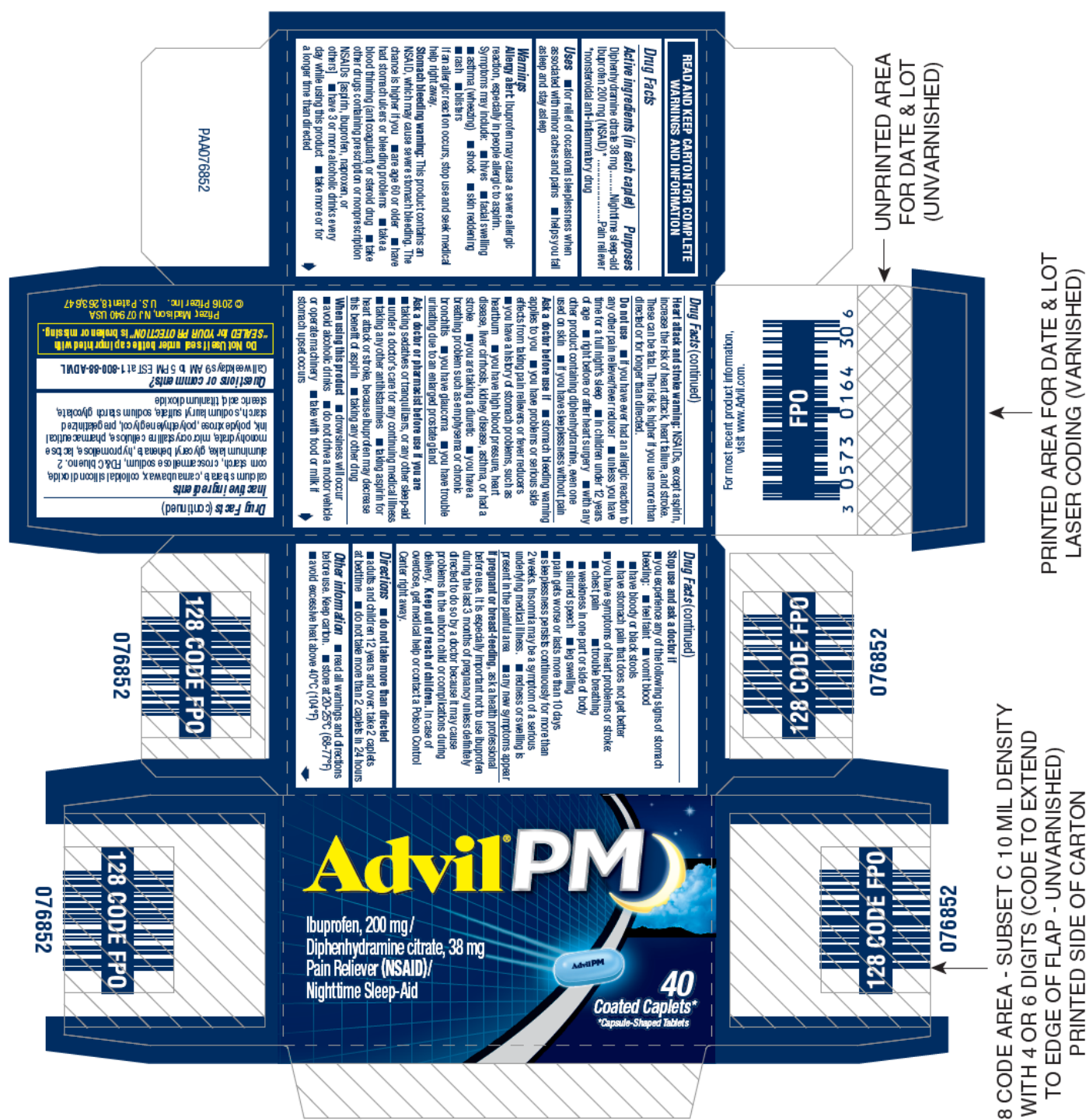
PRODUCTION

(NOT COLOR ACCURATE)

(b) (4)

DRUG FACTS MODIFIED TEXT DEFINED	TYPE SIZE
• DRUG FACTS TITLE	8 pt
• DRUG FACTS CONTINUED	7 pt
• HEADINGS	7 pt
• SUBHEADINGS/BODY TEXT	6 pt
• LEADING	6.25 pt
• # OF CHARACTERS PER INCH	<39
• BULLETS	5 pt
• SPACE BEFORE BULLET	2 ems
• BARLINES, HAIRLINES	1.5 pt, .5 pt
• SPACE BETWEEN HAIRLINES AND BOX END	2 spaces

Printer Notes:
FPO Silver Foil is only representative
of Foil Stamp. Do not separate or print.



UNPRINTED AREA
(UNVARNISHED)
FOR DATE & LOT

PRINTED AREA FOR DATE & LOT
LASER CODING (VARNISHED)

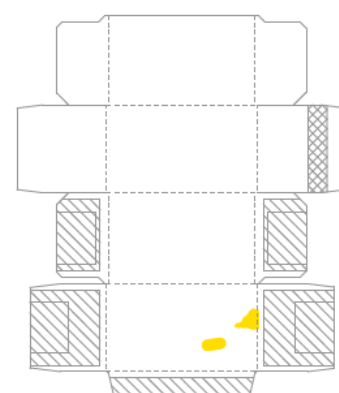
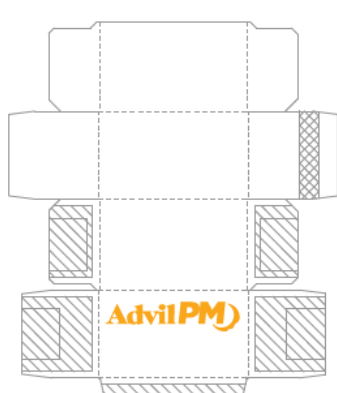
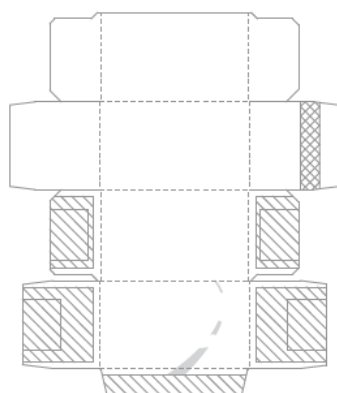
128 CODE AREA - SUBSET C 10 MIL DENSITY
WITH 4 OR 6 DIGITS (CODE TO EXTEND
TO EDGE OF FLAP - UNVARNISHED)
PRINTED SIDE OF CARTON

UNVARNISHED AREAS

Silver Foil Stamp
Full size file on Silver Foil layer

Embossing
Full size file on Emboss layer

Embossing - 2nd level
Full size file on Emboss layer



PRODUCTION

(NOT COLOR ACCURATE)

(b) (4)

DRUG FACTS MODIFIED TEXT DEFINED	TYPE SIZE
• DRUG FACTS TITLE	8 pt
• DRUG FACTS CONTINUED	7 pt
• HEADINGS	7 pt
• SUBHEADINGS/BODY TEXT	6 pt
• LEADING	6.25 pt
• # OF CHARACTERS PER INCH	<39
• BULLETS	5 pt
• SPACE BEFORE BULLET	2 ems
• BARLINES, HAIRLINES	1.5 pt, .5 pt
• SPACE BETWEEN HAIRLINES AND BOX END	2 spaces

Printer Notes:
FPO Silver Foil is only representative of Foil Stamp. Do not separate or print.

This is a representation of an electronic record that was signed electronically and this page is the manifestation of the electronic signature.

/s/

KAREN M MAHONEY
03/30/2017