

## HIGHLIGHTS OF PRESCRIBING INFORMATION

These highlights do not include all the information needed to use ZETIA safely and effectively. See full prescribing information for ZETIA.

### ZETIA (ezetimibe) Tablets

Initial U.S. Approval: 2002

#### INDICATIONS AND USAGE

ZETIA<sup>®</sup> is an inhibitor of intestinal cholesterol (and related phytosterol) absorption indicated as an adjunct to diet to:

- Reduce elevated total-C, LDL-C, and Apo B in patients with primary hyperlipidemia, alone or in combination with an HMG-CoA reductase inhibitor (statin) (1.1)
- Reduce elevated total-C, LDL-C, Apo B, and non-HDL-C in patients with mixed hyperlipidemia in combination with fenofibrate (1.1)
- Reduce elevated total-C and LDL-C in patients with homozygous familial hypercholesterolemia (HoFH), in combination with atorvastatin or simvastatin (1.2)
- Reduce elevated sitosterol and campesterol in patients with homozygous sitosterolemia (phytosterolemia) (1.3)

#### Limitations of Use (1.4)

- The effect of ZETIA on cardiovascular morbidity and mortality has not been determined.
- ZETIA has not been studied in Fredrickson Type I, III, IV, and V dyslipidemias.

#### DOSAGE AND ADMINISTRATION

- One 10-mg tablet once daily, with or without food (2.1)
- Dosing of ZETIA should occur either  $\geq 2$  hours before or  $\geq 4$  hours after administration of a bile acid sequestrant. (2.3, 7.4)

#### DOSAGE FORMS AND STRENGTHS

- Tablets: 10 mg (3)

#### CONTRAINDICATIONS

- Statin contraindications apply when ZETIA is used with a statin:
  - Active liver disease, which may include unexplained persistent elevations in hepatic transaminase levels (4, 5.2)
  - Women who are pregnant or may become pregnant (4, 8.1)
  - Nursing mothers (4, 8.3)
- Known hypersensitivity to product components (4, 6.2)

#### WARNINGS AND PRECAUTIONS

- ZETIA is not recommended in patients with moderate or severe hepatic impairment. (5.4, 8.6, 12.3)

- Liver enzyme abnormalities and monitoring: Persistent elevations in hepatic transaminase can occur when ZETIA is added to a statin. Therefore, when ZETIA is added to statin therapy, monitor hepatic transaminase levels before and during treatment according to the recommendations for the individual statin used. (5.2)
- Skeletal muscle effects (e.g., myopathy and rhabdomyolysis):
  - Cases of myopathy and rhabdomyolysis have been reported in patients treated with ZETIA co-administered with a statin and with ZETIA administered alone. Risk for skeletal muscle toxicity increases with higher doses of statin, advanced age ( $>65$ ), hypothyroidism, renal impairment, and depending on the statin used, concomitant use of other drugs. (5.3, 6.2)

#### ADVERSE REACTIONS

- Common adverse reactions in clinical trials:
  - ZETIA co-administered with a statin (incidence  $\geq 2\%$  and greater than statin alone):
    - nasopharyngitis, myalgia, upper respiratory tract infection, arthralgia, and diarrhea (6)
  - ZETIA administered alone (incidence  $\geq 2\%$  and greater than placebo):
    - upper respiratory tract infection, diarrhea, arthralgia, sinusitis, and pain in extremity (6)

To report SUSPECTED ADVERSE REACTIONS, contact Merck/Schering-Plough Pharmaceuticals at 1-866-637-2501 or FDA at 1-800-FDA-1088 or [www.fda.gov/medwatch](http://www.fda.gov/medwatch).

#### DRUG INTERACTIONS

- Cyclosporine: Combination increases exposure of ZETIA and cyclosporine. Cyclosporine concentrations should be monitored in patients taking ZETIA concomitantly. (7.1, 12.3)
- Fenofibrate: Combination increases exposure of ZETIA. If cholelithiasis is suspected in a patient receiving ZETIA and fenofibrate, gallbladder studies are indicated and alternative lipid-lowering therapy should be considered. (6.1, 7.3)
- Fibrates: Co-administration of ZETIA with fibrates other than fenofibrate is not recommended until use in patients is adequately studied. (7.2)
- Cholestyramine: Combination decreases exposure of ZETIA. (2.3, 7.4, 12.3)

See 17 for PATIENT COUNSELING INFORMATION and FDA-approved patient labeling.

Revised: XX/2008

## FULL PRESCRIBING INFORMATION: CONTENTS\*

### 1 INDICATIONS AND USAGE

- 1.1 Primary Hyperlipidemia
- 1.2 Homozygous Familial Hypercholesterolemia (HoFH)
- 1.3 Homozygous Sitosterolemia
- 1.4 Limitations of Use

### 2 DOSAGE AND ADMINISTRATION

- 2.1 General Dosing Information
- 2.2 Concomitant Lipid-Lowering Therapy
- 2.3 Co-Administration with Bile Acid Sequestrants
- 2.4 Patients with Hepatic Impairment
- 2.5 Patients with Renal Impairment
- 2.6 Geriatric Patients

### 3 DOSAGE FORMS AND STRENGTHS

### 4 CONTRAINDICATIONS

### 5 WARNINGS AND PRECAUTIONS

- 5.1 Use with Statins or Fenofibrate
- 5.2 Liver Enzymes
- 5.3 Myopathy/Rhabdomyolysis
- 5.4 Hepatic Impairment

### 6 ADVERSE REACTIONS

- 6.1 Clinical Trials Experience
- 6.2 Post-Marketing Experience

### 7 DRUG INTERACTIONS

- 7.1 Cyclosporine
- 7.2 Fibrates

7.3 Fenofibrate

7.4 Cholestyramine

7.5 Coumarin Anticoagulants

### 8 USE IN SPECIFIC POPULATIONS

- 8.1 Pregnancy
- 8.3 Nursing Mothers
- 8.4 Pediatric Use
- 8.5 Geriatric Use
- 8.6 Hepatic Impairment

### 10 OVERDOSAGE

### 11 DESCRIPTION

### 12 CLINICAL PHARMACOLOGY

- 12.1 Mechanism of Action
- 12.2 Pharmacodynamics
- 12.3 Pharmacokinetics

### 13 NONCLINICAL TOXICOLOGY

- 13.1 Carcinogenesis, Mutagenesis, Impairment of Fertility
- 13.2 Animal Toxicology and/or Pharmacology

### 14 CLINICAL STUDIES

- 14.1 Primary Hyperlipidemia
- 14.2 Homozygous Familial Hypercholesterolemia (HoFH)
- 14.3 Homozygous Sitosterolemia (Phytosterolemia)

### 16 HOW SUPPLIED/STORAGE AND HANDLING

### 17 PATIENT COUNSELING INFORMATION

- 17.1 Muscle Pain
- 17.2 Liver Enzymes

ZETIA® (ezetimibe) Tablets

XXXXXXXXXT  
REV XX

- 17.3 Pregnancy
- 17.4 Breastfeeding
- 17.5 FDA-approved Patient Labeling

\*Sections or subsections omitted from the full prescribing information are not listed.

ZETIA<sup>®</sup> (ezetimibe) Tablets

XXXXXXXXXX  
REV XX

---

## FULL PRESCRIBING INFORMATION

### 1 INDICATIONS AND USAGE

Therapy with lipid-altering agents should be only one component of multiple risk factor intervention in individuals at significantly increased risk for atherosclerotic vascular disease due to hypercholesterolemia. Drug therapy is indicated as an adjunct to diet when the response to a diet restricted in saturated fat and cholesterol and other nonpharmacologic measures alone has been inadequate.

#### 1.1 Primary Hyperlipidemia

##### *Monotherapy*

ZETIA<sup>1</sup>, administered alone, is indicated as adjunctive therapy to diet for the reduction of elevated total cholesterol (total-C), low-density lipoprotein cholesterol (LDL-C), and apolipoprotein B (Apo B) in patients with primary (heterozygous familial and non-familial) hyperlipidemia.

##### *Combination Therapy with HMG-CoA Reductase Inhibitors (Statins)*

ZETIA, administered in combination with a 3-hydroxy-3-methylglutaryl-coenzyme A (HMG-CoA) reductase inhibitor (statin), is indicated as adjunctive therapy to diet for the reduction of elevated total-C, LDL-C, and Apo B in patients with primary (heterozygous familial and non-familial) hyperlipidemia.

##### *Combination Therapy with Fenofibrate*

ZETIA, administered in combination with fenofibrate, is indicated as adjunctive therapy to diet for the reduction of elevated total-C, LDL-C, Apo B, and non-high-density lipoprotein cholesterol (non-HDL-C) in adult patients with mixed hyperlipidemia.

#### 1.2 Homozygous Familial Hypercholesterolemia (HoFH)

The combination of ZETIA and atorvastatin or simvastatin is indicated for the reduction of elevated total-C and LDL-C levels in patients with HoFH, as an adjunct to other lipid-lowering treatments (e.g., LDL apheresis) or if such treatments are unavailable.

#### 1.3 Homozygous Sitosterolemia

ZETIA is indicated as adjunctive therapy to diet for the reduction of elevated sitosterol and campesterol levels in patients with homozygous familial sitosterolemia.

#### 1.4 Limitations of Use

The effect of ZETIA on cardiovascular morbidity and mortality has not been determined.  
ZETIA has not been studied in Fredrickson Type I, III, IV, and V dyslipidemias.

### 2 DOSAGE AND ADMINISTRATION

#### 2.1 General Dosing Information

The recommended dose of ZETIA is 10 mg once daily.  
ZETIA can be administered with or without food.

#### 2.2 Concomitant Lipid-Lowering Therapy

ZETIA may be administered with a statin (in patients with primary hyperlipidemia) or with fenofibrate (in patients with mixed hyperlipidemia) for incremental effect. For convenience, the daily dose of ZETIA may be taken at the same time as the statin or fenofibrate, according to the dosing recommendations for the respective medications.

#### 2.3 Co-Administration with Bile Acid Sequestrants

Dosing of ZETIA should occur either  $\geq 2$  hours before or  $\geq 4$  hours after administration of a bile acid sequestrant [see *Drug Interactions (7.4)*].

---

<sup>1</sup> COPYRIGHT © 2001, 2002, 2005, 2007, 2008 Merck/Schering-Plough Pharmaceuticals.  
All rights reserved.

ZETIA® (ezetimibe) Tablets

XXXXXXXXXX  
REV XX

#### 2.4 Patients with Hepatic Impairment

No dosage adjustment is necessary in patients with mild hepatic impairment [see *Warnings and Precautions (5.4)*].

#### 2.5 Patients with Renal Impairment

No dosage adjustment is necessary in patients with renal impairment [see *Clinical Pharmacology (12.3)*].

#### 2.6 Geriatric Patients

No dosage adjustment is necessary in geriatric patients [see *Clinical Pharmacology (12.3)*].

### 3 DOSAGE FORMS AND STRENGTHS

10-mg tablets are white to off-white, capsule-shaped tablets debossed with "414" on one side.

### 4 CONTRAINDICATIONS

ZETIA is contraindicated in the following conditions:

- The combination of ZETIA with a statin is contraindicated in patients with active liver disease or unexplained persistent elevations in hepatic transaminase levels.
- Women who are pregnant or may become pregnant. Because statins decrease cholesterol synthesis and possibly the synthesis of other biologically active substances derived from cholesterol, ZETIA in combination with a statin may cause fetal harm when administered to pregnant women. Additionally, there is no apparent benefit to therapy during pregnancy, and safety in pregnant women has not been established. If the patient becomes pregnant while taking this drug, the patient should be apprised of the potential hazard to the fetus and the lack of known clinical benefit with continued use during pregnancy. [See *Use in Specific Populations (8.1)*.]
- Nursing mothers. Because statins may pass into breast milk, and because statins have the potential to cause serious adverse reactions in nursing infants, women who require ZETIA treatment in combination with a statin should be advised not to nurse their infants [see *Use in Specific Populations (8.3)*].
- Patients with a known hypersensitivity to any component of this product. Hypersensitivity reactions including anaphylaxis, angioedema, rash and urticaria have been reported with ZETIA [see *Adverse Reactions (6.2)*].

### 5 WARNINGS AND PRECAUTIONS

#### 5.1 Use with Statins or Fenofibrate

Concurrent administration of ZETIA with a specific statin or fenofibrate should be in accordance with the product labeling for that medication.

#### 5.2 Liver Enzymes

In controlled clinical monotherapy studies, the incidence of consecutive elevations ( $\geq 3$  X the upper limit of normal [ULN]) in hepatic transaminase levels was similar between ZETIA (0.5%) and placebo (0.3%).

In controlled clinical combination studies of ZETIA initiated concurrently with a statin, the incidence of consecutive elevations ( $\geq 3$  X ULN) in hepatic transaminase levels was 1.3% for patients treated with ZETIA administered with statins and 0.4% for patients treated with statins alone. These elevations in transaminases were generally asymptomatic, not associated with cholestasis, and returned to baseline after discontinuation of therapy or with continued treatment. When ZETIA is co-administered with a statin, liver tests should be performed at initiation of therapy and according to the recommendations of the statin. Should an increase in ALT or AST  $\geq 3$  X ULN persist, consider withdrawal of ZETIA and/or the statin.

#### 5.3 Myopathy/Rhabdomyolysis

In clinical trials, there was no excess of myopathy or rhabdomyolysis associated with ZETIA compared with the relevant control arm (placebo or statin alone). However, myopathy and rhabdomyolysis are known adverse reactions to statins and other lipid-lowering drugs. In clinical trials, the incidence of

ZETIA® (ezetimibe) Tablets

XXXXXXXXXX  
REV XX

creatine phosphokinase (CPK) >10 X ULN was 0.2% for ZETIA vs 0.1% for placebo, and 0.1% for ZETIA co-administered with a statin vs 0.4% for statins alone. Risk for skeletal muscle toxicity increases with higher doses of statin, advanced age (>65), hypothyroidism, renal impairment, and depending on the statin used, concomitant use of other drugs.

In post-marketing experience with ZETIA, cases of myopathy and rhabdomyolysis have been reported. Most patients who developed rhabdomyolysis were taking a statin prior to initiating ZETIA. However, rhabdomyolysis has been reported with ZETIA monotherapy and with the addition of ZETIA to agents known to be associated with increased risk of rhabdomyolysis, such as fibrates. ZETIA and any statin or fibrate that the patient is taking concomitantly should be immediately discontinued if myopathy is diagnosed or suspected. The presence of muscle symptoms and a CPK level >10 X the ULN indicates myopathy.

#### 5.4 Hepatic Impairment

Due to the unknown effects of the increased exposure to ezetimibe in patients with moderate to severe hepatic impairment, ZETIA is not recommended in these patients. [See *Clinical Pharmacology* (12.3).]

## 6 ADVERSE REACTIONS

The following serious adverse reactions are discussed in greater detail in other sections of the label:

- Liver enzyme abnormalities [see *Warnings and Precautions* (5.2)]
- Rhabdomyolysis and myopathy [see *Warnings and Precautions* (5.3)]

#### Monotherapy Studies:

In the ZETIA controlled clinical trials database (placebo-controlled) of 2396 patients with a median treatment duration of 12 weeks (range 0 to 39 weeks), 3.3% of patients on ZETIA and 2.9% of patients on placebo discontinued due to adverse reactions. The most common adverse reactions in the group of patients treated with ZETIA that led to treatment discontinuation and occurred at a rate greater than placebo were:

- Arthralgia (0.3%)
- Dizziness (0.2%)
- Gamma-glutamyltransferase increased (0.2%)

The most commonly reported adverse reactions (incidence  $\geq 2\%$  and greater than placebo) in the ZETIA monotherapy controlled clinical trial database of 2396 patients were: upper respiratory tract infection (4.3%), diarrhea (4.1%), arthralgia (3.0%), sinusitis (2.8%), and pain in extremity (2.7%).

#### Statin Co-Administration Studies:

In the ZETIA + statin controlled clinical trials database of 11,308 patients with a median treatment duration of 8 weeks (range 0 to 112 weeks), 4.0% of patients on ZETIA + statin and 3.3% of patients on statin alone discontinued due to adverse reactions. The most common adverse reactions in the group of patients treated with ZETIA + statin that led to treatment discontinuation and occurred at a rate greater than statin alone were:

- Alanine aminotransferase increased (0.6%)
- Myalgia (0.5%)
- Fatigue, aspartate aminotransferase increased, headache, and pain in extremity (each at 0.2%)

The most commonly reported adverse reactions (incidence  $\geq 2\%$  and greater than statin alone) in the ZETIA + statin controlled clinical trial database of 11,308 patients were: nasopharyngitis (3.7%), myalgia (3.2%), upper respiratory tract infection (2.9%), arthralgia (2.6%) and diarrhea (2.5%).

ZETIA® (ezetimibe) Tablets

XXXXXXXXXX  
REV XX

### 6.1 Clinical Trials Experience

Because clinical studies are conducted under widely varying conditions, adverse reaction rates observed in the clinical studies of a drug cannot be directly compared to rates in the clinical studies of another drug and may not reflect the rates observed in clinical practice.

#### *Monotherapy*

In 10 double-blind, placebo-controlled clinical trials, 2396 patients with primary hyperlipidemia (age range 9-86 years, 50% women, 90% Caucasians, 5% Blacks, 3% Hispanics, 2% Asians) and elevated LDL-C were treated with ZETIA 10 mg/day for a median treatment duration of 12 weeks (range 0 to 39 weeks).

Adverse reactions reported in  $\geq 2\%$  of patients treated with ZETIA and at an incidence greater than placebo in placebo-controlled studies of ZETIA, regardless of causality assessment, are shown in **Table 1**.

**TABLE 1: Clinical Adverse Reactions Occurring in  $\geq 2\%$  of Patients Treated with ZETIA and at an Incidence Greater than Placebo, Regardless of Causality**

Body System/Organ Class Adverse Reaction	ZETIA 10 mg (%) n = 2396	Placebo (%) n = 1159
<i>Gastrointestinal disorders</i>		
Diarrhea	4.1	3.7
<i>General disorders and administration site conditions</i>		
Fatigue	2.4	1.5
<i>Infections and infestations</i>		
Influenza	2.0	1.5
Sinusitis	2.8	2.2
Upper respiratory tract infection	4.3	2.5
<i>Musculoskeletal and connective tissue disorders</i>		
Arthralgia	3.0	2.2
Pain in extremity	2.7	2.5

The frequency of less common adverse reactions was comparable between ZETIA and placebo.

#### *Combination with a Statin*

In 28 double-blind, controlled (placebo or active-controlled) clinical trials, 11,308 patients with primary hyperlipidemia (age range 10-93 years, 48% women, 85% Caucasians, 7% Blacks, 4% Hispanics, 3% Asians) and elevated LDL-C were treated with ZETIA 10 mg/day concurrently with or added to on-going statin therapy for a median treatment duration of 8 weeks (range 0 to 112 weeks).

The incidence of consecutive increased transaminases ( $\geq 3 \times$  ULN) was higher in patients receiving ZETIA administered with statins (1.3%) than in patients treated with statins alone (0.4%). [See *Warnings and Precautions (5.2)*.]

Clinical adverse reactions reported in  $\geq 2\%$  of patients treated with ZETIA + statin and at an incidence greater than statin, regardless of causality assessment, are shown in **Table 2**.

ZETIA® (ezetimibe) Tablets

XXXXXXXXXX  
REV XX

**TABLE 2: Clinical Adverse Reactions Occurring in ≥2% of Patients Treated with ZETIA Co-Administered with a Statin and at an Incidence Greater than Statin, Regardless of Causality**

Body System/Organ Class Adverse Reaction	All Statins* (%) n = 9361	ZETIA + All Statins* (%) n = 11,308
<i>Gastrointestinal disorders</i>		
Diarrhea	2.2	2.5
<i>General disorders and administration site conditions</i>		
Fatigue	1.6	2.0
<i>Infections and infestations</i>		
Influenza	2.1	2.2
Nasopharyngitis	3.3	3.7
Upper respiratory tract infection	2.8	2.9
<i>Musculoskeletal and connective tissue disorders</i>		
Arthralgia	2.4	2.6
Back pain	2.3	2.4
Myalgia	2.7	3.2
Pain in extremity	1.9	2.1

\*All Statins = all doses of all statins

#### *Combination with Fenofibrate*

This clinical study involving 625 patients with mixed dyslipidemia (age range 20-76 years, 44% women, 79% Caucasians, 0.1% Blacks, 11% Hispanics, 5% Asians) treated for up to 12 weeks and 576 patients treated for up to an additional 48 weeks evaluated co-administration of ZETIA and fenofibrate. This study was not designed to compare treatment groups for infrequent events. Incidence rates (95% CI) for clinically important elevations (≥3 X ULN, consecutive) in hepatic transaminase levels were 4.5% (1.9, 8.8) and 2.7% (1.2, 5.4) for fenofibrate monotherapy (n=188) and ZETIA co-administered with fenofibrate (n=183), respectively, adjusted for treatment exposure. Corresponding incidence rates for cholecystectomy were 0.6% (95% CI: 0.0%, 3.1%) and 1.7% (95% CI: 0.6%, 4.0%) for fenofibrate monotherapy and ZETIA co-administered with fenofibrate, respectively [see *Drug Interactions (7.3)*]. The numbers of patients exposed to co-administration therapy as well as fenofibrate and ezetimibe monotherapy were inadequate to assess gallbladder disease risk. There were no CPK elevations >10 X ULN in any of the treatment groups.

#### **6.2 Post-Marketing Experience**

Because the reactions below are reported voluntarily from a population of uncertain size, it is generally not possible to reliably estimate their frequency or establish a causal relationship to drug exposure.

The following additional adverse reactions have been identified during post-approval use of ZETIA:

Hypersensitivity reactions, including anaphylaxis, angioedema, rash, and urticaria; arthralgia; myalgia; elevated creatine phosphokinase; myopathy/rhabdomyolysis [see *Warnings and Precautions (5.3)*]; elevations in liver transaminases; hepatitis; thrombocytopenia; pancreatitis; nausea; dizziness; paresthesia; depression; cholelithiasis; cholecystitis.

### **7 DRUG INTERACTIONS**

[See *Clinical Pharmacology (12.3)*.]

#### **7.1 Cyclosporine**

Caution should be exercised when using ZETIA and cyclosporine concomitantly due to increased exposure to both ezetimibe and cyclosporine. Cyclosporine concentrations should be monitored in patients receiving ZETIA and cyclosporine.

The degree of increase in ezetimibe exposure may be greater in patients with severe renal insufficiency. In patients treated with cyclosporine, the potential effects of the increased exposure to ezetimibe from concomitant use should be carefully weighed against the benefits of alterations in lipid levels provided by ezetimibe.

ZETIA® (ezetimibe) Tablets

XXXXXXXXXX  
REV XX

## 7.2 Fibrates

The efficacy and safety of co-administration of ezetimibe with fibrates other than fenofibrate have not been studied.

Fibrates may increase cholesterol excretion into the bile, leading to cholelithiasis. In a preclinical study in dogs, ezetimibe increased cholesterol in the gallbladder bile [see *Nonclinical Toxicology (13.2)*]. Co-administration of ZETIA with fibrates other than fenofibrate is not recommended until use in patients is adequately studied.

## 7.3 Fenofibrate

If cholelithiasis is suspected in a patient receiving ZETIA and fenofibrate, gallbladder studies are indicated and alternative lipid-lowering therapy should be considered [see *Adverse Reactions (6.1)* and *the product labeling for fenofibrate*].

## 7.4 Cholestyramine

Concomitant cholestyramine administration decreased the mean area under the curve (AUC) of total ezetimibe approximately 55%. The incremental LDL-C reduction due to adding ezetimibe to cholestyramine may be reduced by this interaction.

## 7.5 Coumarin Anticoagulants

If ezetimibe is added to warfarin, a coumarin anticoagulant, the International Normalized Ratio (INR) should be appropriately monitored.

# 8 USE IN SPECIFIC POPULATIONS

## 8.1 Pregnancy

*Pregnancy Category C:*

There are no adequate and well-controlled studies of ezetimibe in pregnant women. Ezetimibe should be used during pregnancy only if the potential benefit justifies the risk to the fetus.

In oral (gavage) embryo-fetal development studies of ezetimibe conducted in rats and rabbits during organogenesis, there was no evidence of embryolethal effects at the doses tested (250, 500, 1000 mg/kg/day). In rats, increased incidences of common fetal skeletal findings (extra pair of thoracic ribs, unossified cervical vertebral centra, shortened ribs) were observed at 1000 mg/kg/day (~10 X the human exposure at 10 mg daily based on AUC<sub>0-24hr</sub> for total ezetimibe). In rabbits treated with ezetimibe, an increased incidence of extra thoracic ribs was observed at 1000 mg/kg/day (150 X the human exposure at 10 mg daily based on AUC<sub>0-24hr</sub> for total ezetimibe). Ezetimibe crossed the placenta when pregnant rats and rabbits were given multiple oral doses.

Multiple-dose studies of ezetimibe given in combination with statins in rats and rabbits during organogenesis result in higher ezetimibe and statin exposures. Reproductive findings occur at lower doses in combination therapy compared to monotherapy.

**All statins are contraindicated in pregnant and nursing women. When ZETIA is administered with a statin in a woman of childbearing potential, refer to the pregnancy category and product labeling for the statin. [See *Contraindications (4)*.]**

## 8.3 Nursing Mothers

It is not known whether ezetimibe is excreted into human breast milk. In rat studies, exposure to total ezetimibe in nursing pups was up to half of that observed in maternal plasma. Because many drugs are excreted in human milk, caution should be exercised when ZETIA is administered to a nursing woman. ZETIA should not be used in nursing mothers unless the potential benefit justifies the potential risk to the infant.

## 8.4 Pediatric Use

The effects of ZETIA co-administered with simvastatin (n=126) compared to simvastatin monotherapy (n=122) have been evaluated in adolescent boys and girls with heterozygous familial hypercholesterolemia (HeFH). In a multicenter, double-blind, controlled study followed by an open-label phase, 142 boys and 106 postmenarchal girls, 10 to 17 years of age (mean age 14.2 years, 43% females, 82% Caucasians, 4% Asian, 2% Blacks, 13% multi-racial) with HeFH were randomized to receive either ZETIA co-administered with simvastatin or simvastatin monotherapy. Inclusion in the study required 1) a baseline LDL-C level between 160 and 400 mg/dL and 2) a medical history and clinical

ZETIA® (ezetimibe) Tablets

XXXXXXXXXX  
REV XX

presentation consistent with HeFH. The mean baseline LDL-C value was 225 mg/dL (range: 161-351 mg/dL) in the ZETIA co-administered with simvastatin group compared to 219 mg/dL (range: 149-336 mg/dL) in the simvastatin monotherapy group. The patients received co-administered ZETIA and simvastatin (10 mg, 20 mg, or 40 mg) or simvastatin monotherapy (10 mg, 20 mg, or 40 mg) for 6 weeks, co-administered ZETIA and 40 mg simvastatin or 40 mg simvastatin monotherapy for the next 27 weeks, and open-label co-administered ZETIA and simvastatin (10 mg, 20 mg, or 40 mg) for 20 weeks thereafter.

The results of the study at Week 6 are summarized in **Table 3**. Results at Week 33 were consistent with those at Week 6.

**TABLE 3: Mean Percent Difference at Week 6 Between the Pooled ZETIA Co-Administered with Simvastatin Group and the Pooled Simvastatin Monotherapy Group in Adolescent Patients with Heterozygous Familial Hypercholesterolemia**

	Total-C	LDL-C	Apo B	Non-HDL-C	TG*	HDL-C
Mean percent difference between treatment groups	-12%	-15%	-12%	-14%	-2%	+0.1%
95% Confidence Interval	(-15%, -9%)	(-18%, -12%)	(-15%, -9%)	(-17%, -11%)	(-9%, +4%)	(-3%, +3%)

\* For triglycerides, median % change from baseline

From the start of the trial to the end of Week 33, discontinuations due to an adverse reaction occurred in 7 (6%) patients in the ZETIA co-administered with simvastatin group and in 2 (2%) patients in the simvastatin monotherapy group.

During the trial, hepatic transaminase elevations (two consecutive measurements for ALT and/or AST  $\geq 3$  X ULN) occurred in four (3%) individuals in the ZETIA co-administered with simvastatin group and in two (2%) individuals in the simvastatin monotherapy group. Elevations of CPK ( $\geq 10$  X ULN) occurred in two (2%) individuals in the ZETIA co-administered with simvastatin group and in zero individuals in the simvastatin monotherapy group.

In this limited controlled study, there was no significant effect on growth or sexual maturation in the adolescent boys or girls, or on menstrual cycle length in girls.

Co-administration of ZETIA with simvastatin at doses greater than 40 mg/day has not been studied in adolescents. Also, ZETIA has not been studied in patients younger than 10 years of age or in pre-menarchal girls.

Based on total ezetimibe (ezetimibe + ezetimibe-glucuronide), there are no pharmacokinetic differences between adolescents and adults. Pharmacokinetic data in the pediatric population <10 years of age are not available.

### 8.5 Geriatric Use

#### *Monotherapy Studies*

Of the 2396 patients who received ZETIA in clinical studies, 669 (28%) were 65 and older, and 111 (5%) were 75 and older.

#### *Statin Co-Administration Studies*

Of the 11,308 patients who received ZETIA + statin in clinical studies, 3587 (32%) were 65 and older, and 924 (8%) were 75 and older.

No overall differences in safety and effectiveness were observed between these patients and younger patients, and other reported clinical experience has not identified differences in responses between the elderly and younger patients, but greater sensitivity of some older individuals cannot be ruled out [see *Clinical Pharmacology (12.3)*].

### 8.6 Hepatic Impairment

ZETIA is not recommended in patients with moderate to severe hepatic impairment [see *Warnings and Precautions (5.4) and Clinical Pharmacology (12.3)*].

ZETIA given concomitantly with a statin is contraindicated in patients with active liver disease or unexplained persistent elevations of hepatic transaminase levels [see *Contraindications (4); Warnings and Precautions (5.2) and Clinical Pharmacology (12.3)*].

ZETIA® (ezetimibe) Tablets

XXXXXXXXXX  
REV XX

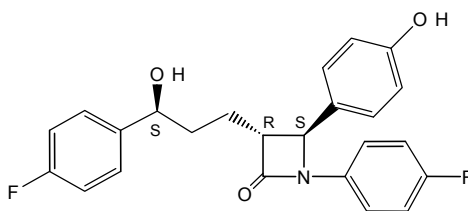
## 10 OVERDOSAGE

In clinical studies, administration of ezetimibe, 50 mg/day to 15 healthy subjects for up to 14 days, or 40 mg/day to 18 patients with primary hyperlipidemia for up to 56 days, was generally well tolerated.

A few cases of overdosage with ZETIA have been reported; most have not been associated with adverse experiences. Reported adverse experiences have not been serious. In the event of an overdose, symptomatic and supportive measures should be employed.

## 11 DESCRIPTION

ZETIA (ezetimibe) is in a class of lipid-lowering compounds that selectively inhibits the intestinal absorption of cholesterol and related phytosterols. The chemical name of ezetimibe is 1-(4-fluorophenyl)-3(R)-[3-(4-fluorophenyl)-3(S)-hydroxypropyl]-4(S)-(4-hydroxyphenyl)-2-azetidinone. The empirical formula is  $C_{24}H_{21}F_2NO_3$ . Its molecular weight is 409.4 and its structural formula is:



Ezetimibe is a white, crystalline powder that is freely to very soluble in ethanol, methanol, and acetone and practically insoluble in water. Ezetimibe has a melting point of about 163°C and is stable at ambient temperature. ZETIA is available as a tablet for oral administration containing 10 mg of ezetimibe and the following inactive ingredients: croscarmellose sodium NF, lactose monohydrate NF, magnesium stearate NF, microcrystalline cellulose NF, povidone USP, and sodium lauryl sulfate NF.

## 12 CLINICAL PHARMACOLOGY

### 12.1 Mechanism of Action

Ezetimibe reduces blood cholesterol by inhibiting the absorption of cholesterol by the small intestine. In a 2-week clinical study in 18 hypercholesterolemic patients, ZETIA inhibited intestinal cholesterol absorption by 54%, compared with placebo. ZETIA had no clinically meaningful effect on the plasma concentrations of the fat-soluble vitamins A, D, and E (in a study of 113 patients), and did not impair adrenocortical steroid hormone production (in a study of 118 patients).

The cholesterol content of the liver is derived predominantly from three sources. The liver can synthesize cholesterol, take up cholesterol from the blood from circulating lipoproteins, or take up cholesterol absorbed by the small intestine. Intestinal cholesterol is derived primarily from cholesterol secreted in the bile and from dietary cholesterol.

Ezetimibe has a mechanism of action that differs from those of other classes of cholesterol-reducing compounds (statins, bile acid sequestrants [resins], fibric acid derivatives, and plant stanols). The molecular target of ezetimibe has been shown to be the sterol transporter, Niemann-Pick C1-Like 1 (NPC1L1), which is involved in the intestinal uptake of cholesterol and phytosterols.

Ezetimibe does not inhibit cholesterol synthesis in the liver, or increase bile acid excretion. Instead, ezetimibe localizes at the brush border of the small intestine and inhibits the absorption of cholesterol, leading to a decrease in the delivery of intestinal cholesterol to the liver. This causes a reduction of hepatic cholesterol stores and an increase in clearance of cholesterol from the blood; this distinct mechanism is complementary to that of statins and of fenofibrate [see *Clinical Studies (14.1)*].

### 12.2 Pharmacodynamics

Clinical studies have demonstrated that elevated levels of total-C, LDL-C and Apo B, the major protein constituent of LDL, promote human atherosclerosis. In addition, decreased levels of HDL-C are associated with the development of atherosclerosis. Epidemiologic studies have established that cardiovascular morbidity and mortality vary directly with the level of total-C and LDL-C and inversely with

ZETIA® (ezetimibe) Tablets

XXXXXXXXXX  
REV XX

the level of HDL-C. Like LDL, cholesterol-enriched triglyceride-rich lipoproteins, including very-low-density lipoproteins (VLDL), intermediate-density lipoproteins (IDL), and remnants, can also promote atherosclerosis. The independent effect of raising HDL-C or lowering TG on the risk of coronary and cardiovascular morbidity and mortality has not been determined.

ZETIA reduces total-C, LDL-C, Apo B, and TG, and increases HDL-C in patients with hyperlipidemia. Administration of ZETIA with a statin is effective in improving serum total-C, LDL-C, Apo B, TG, and HDL-C beyond either treatment alone. Administration of ZETIA with fenofibrate is effective in improving serum total-C, LDL-C, Apo B, and non-HDL-C in patients with mixed hyperlipidemia as compared to either treatment alone. The effects of ezetimibe given either alone or in addition to a statin or fenofibrate on cardiovascular morbidity and mortality have not been established.

### 12.3 Pharmacokinetics

#### *Absorption*

After oral administration, ezetimibe is absorbed and extensively conjugated to a pharmacologically active phenolic glucuronide (ezetimibe-glucuronide). After a single 10-mg dose of ZETIA to fasted adults, mean ezetimibe peak plasma concentrations ( $C_{max}$ ) of 3.4 to 5.5 ng/mL were attained within 4 to 12 hours ( $T_{max}$ ). Ezetimibe-glucuronide mean  $C_{max}$  values of 45 to 71 ng/mL were achieved between 1 and 2 hours ( $T_{max}$ ). There was no substantial deviation from dose proportionality between 5 and 20 mg. The absolute bioavailability of ezetimibe cannot be determined, as the compound is virtually insoluble in aqueous media suitable for injection.

#### *Effect of Food on Oral Absorption*

Concomitant food administration (high-fat or non-fat meals) had no effect on the extent of absorption of ezetimibe when administered as ZETIA 10-mg tablets. The  $C_{max}$  value of ezetimibe was increased by 38% with consumption of high-fat meals. ZETIA can be administered with or without food.

#### *Distribution*

Ezetimibe and ezetimibe-glucuronide are highly bound (>90%) to human plasma proteins.

#### *Metabolism and Excretion*

Ezetimibe is primarily metabolized in the small intestine and liver via glucuronide conjugation (a phase II reaction) with subsequent biliary and renal excretion. Minimal oxidative metabolism (a phase I reaction) has been observed in all species evaluated.

In humans, ezetimibe is rapidly metabolized to ezetimibe-glucuronide. Ezetimibe and ezetimibe-glucuronide are the major drug-derived compounds detected in plasma, constituting approximately 10 to 20% and 80 to 90% of the total drug in plasma, respectively. Both ezetimibe and ezetimibe-glucuronide are eliminated from plasma with a half-life of approximately 22 hours for both ezetimibe and ezetimibe-glucuronide. Plasma concentration-time profiles exhibit multiple peaks, suggesting enterohepatic recycling.

Following oral administration of  $^{14}C$ -ezetimibe (20 mg) to human subjects, total ezetimibe (ezetimibe + ezetimibe-glucuronide) accounted for approximately 93% of the total radioactivity in plasma. After 48 hours, there were no detectable levels of radioactivity in the plasma.

Approximately 78% and 11% of the administered radioactivity were recovered in the feces and urine, respectively, over a 10-day collection period. Ezetimibe was the major component in feces and accounted for 69% of the administered dose, while ezetimibe-glucuronide was the major component in urine and accounted for 9% of the administered dose.

#### *Specific Populations*

**Geriatric Patients:** In a multiple-dose study with ezetimibe given 10 mg once daily for 10 days, plasma concentrations for total ezetimibe were about 2-fold higher in older ( $\geq 65$  years) healthy subjects compared to younger subjects.

**Pediatric Patients:** [See Use in Specific Populations (8.4).]

**Gender:** In a multiple-dose study with ezetimibe given 10 mg once daily for 10 days, plasma concentrations for total ezetimibe were slightly higher (<20%) in women than in men.

**Race:** Based on a meta-analysis of multiple-dose pharmacokinetic studies, there were no pharmacokinetic differences between Black and Caucasian subjects. Studies in Asian subjects indicated that the pharmacokinetics of ezetimibe were similar to those seen in Caucasian subjects.

ZETIA® (ezetimibe) Tablets

XXXXXXXXXX  
REV XX

**Hepatic Impairment:** After a single 10-mg dose of ezetimibe, the mean AUC for total ezetimibe was increased approximately 1.7-fold in patients with mild hepatic impairment (Child-Pugh score 5 to 6), compared to healthy subjects. The mean AUC values for total ezetimibe and ezetimibe were increased approximately 3- to 4-fold and 5- to 6-fold, respectively, in patients with moderate (Child-Pugh score 7 to 9) or severe hepatic impairment (Child-Pugh score 10 to 15). In a 14-day, multiple-dose study (10 mg daily) in patients with moderate hepatic impairment, the mean AUC values for total ezetimibe and ezetimibe were increased approximately 4-fold on Day 1 and Day 14 compared to healthy subjects. Due to the unknown effects of the increased exposure to ezetimibe in patients with moderate or severe hepatic impairment, ZETIA is not recommended in these patients [see *Warnings and Precautions (5.4)*].

**Renal Impairment:** After a single 10-mg dose of ezetimibe in patients with severe renal disease (n=8; mean CrCl  $\leq$ 30 mL/min/1.73 m<sup>2</sup>), the mean AUC values for total ezetimibe, ezetimibe-glucuronide, and ezetimibe were increased approximately 1.5-fold, compared to healthy subjects (n=9).

*Drug Interactions [See also Drug Interactions (7)]*

ZETIA had no significant effect on a series of probe drugs (caffeine, dextromethorphan, tolbutamide, and IV midazolam) known to be metabolized by cytochrome P450 (1A2, 2D6, 2C8/9 and 3A4) in a “cocktail” study of twelve healthy adult males. This indicates that ezetimibe is neither an inhibitor nor an inducer of these cytochrome P450 isozymes, and it is unlikely that ezetimibe will affect the metabolism of drugs that are metabolized by these enzymes.

**TABLE 4: Effect of Co-Administered Drugs on Total Ezetimibe**

Co-Administered Drug and Dosing Regimen	Total Ezetimibe*	
	Change in AUC	Change in C <sub>max</sub>
Cyclosporine-stable dose required (75-150 mg BID) <sup>†,‡</sup>	↑240%	↑290%
Fenofibrate, 200 mg QD, 14 days <sup>‡</sup>	↑48%	↑64%
Gemfibrozil, 600 mg BID, 7 days <sup>‡</sup>	↑64%	↑91%
Cholestyramine, 4 g BID, 14 days <sup>‡</sup>	↓55%	↓4%
Aluminum & magnesium hydroxide combination antacid, single dose <sup>§</sup>	↓4%	↓30%
Cimetidine, 400 mg BID, 7 days	↑6%	↑22%
Glipizide, 10 mg, single dose	↑4%	↓8%
<b>Statins</b>		
Lovastatin 20 mg QD, 7 days	↑9%	↑3%
Pravastatin 20 mg QD, 14 days	↑7%	↑23%
Atorvastatin 10 mg QD, 14 days	↓2%	↑12%
Rosuvastatin 10 mg QD, 14 days	↑13%	↑18%
Fluvastatin 20 mg QD, 14 days	↓19%	↑7%

\* Based on 10 mg dose of ezetimibe

† Post-renal transplant patients with mild impaired or normal renal function. In a different study, a renal transplant patient with severe renal insufficiency (creatinine clearance of 13.2 mL/min/1.73 m<sup>2</sup>) who was receiving multiple medications, including cyclosporine, demonstrated a 12-fold greater exposure to total ezetimibe compared to healthy subjects.

‡ See Drug Interactions (7)

§ Supralox, 20 mL

ZETIA® (ezetimibe) Tablets

XXXXXXXXXX  
REV XX

**TABLE 5: Effect of Ezetimibe Co-Administration on Systemic Exposure to Other Drugs**

Co-Administered Drug and its Dosage Regimen	Ezetimibe Dosage Regimen	Change in AUC of Co-Administered Drug	Change in C <sub>max</sub> of Co-Administered Drug
Warfarin, 25 mg single dose on day 7	10 mg QD, 11 days	↓2% (R-warfarin) ↓4% (S-warfarin)	↑3% (R-warfarin) ↑1% (S-warfarin)
Digoxin, 0.5 mg single dose	10 mg QD, 8 days	↑2%	↓7%
Gemfibrozil, 600 mg BID, 7 days*	10 mg QD, 7 days	↓1%	↓11%
Ethinyl estradiol & Levonorgestrel, QD, 21 days	10 mg QD, days 8-14 of 21d oral contraceptive cycle	Ethinyl estradiol 0% Levonorgestrel 0%	Ethinyl estradiol ↓9% Levonorgestrel ↓5%
Glipizide, 10 mg on days 1 and 9	10 mg QD, days 2-9	↓3%	↓5%
Fenofibrate, 200 mg QD, 14 days*	10 mg QD, 14 days	↑11%	↑7%
Cyclosporine, 100 mg single dose day 7*	20 mg QD, 8 days	↑15%	↑10%
<b>Statins</b>			
Lovastatin 20 mg QD, 7 days	10 mg QD, 7 days	↑19%	↑3%
Pravastatin 20 mg QD, 14 days	10 mg QD, 14 days	↓20%	↓24%
Atorvastatin 10 mg QD, 14 days	10 mg QD, 14 days	↓4%	↑7%
Rosuvastatin 10 mg QD, 14 days	10 mg QD, 14 days	↑19%	↑17%
Fluvastatin 20 mg QD, 14 days	10 mg QD, 14 days	↓39%	↓27%

\* See Drug Interactions (7)

### 13 NONCLINICAL TOXICOLOGY

#### 13.1 Carcinogenesis, Mutagenesis, Impairment of Fertility

A 104-week dietary carcinogenicity study with ezetimibe was conducted in rats at doses up to 1500 mg/kg/day (males) and 500 mg/kg/day (females) (~20 X the human exposure at 10 mg daily based on AUC<sub>0-24hr</sub> for total ezetimibe). A 104-week dietary carcinogenicity study with ezetimibe was also conducted in mice at doses up to 500 mg/kg/day (>150 X the human exposure at 10 mg daily based on AUC<sub>0-24hr</sub> for total ezetimibe). There were no statistically significant increases in tumor incidences in drug-treated rats or mice.

No evidence of mutagenicity was observed *in vitro* in a microbial mutagenicity (Ames) test with *Salmonella typhimurium* and *Escherichia coli* with or without metabolic activation. No evidence of clastogenicity was observed *in vitro* in a chromosomal aberration assay in human peripheral blood lymphocytes with or without metabolic activation. In addition, there was no evidence of genotoxicity in the *in vivo* mouse micronucleus test.

In oral (gavage) fertility studies of ezetimibe conducted in rats, there was no evidence of reproductive toxicity at doses up to 1000 mg/kg/day in male or female rats (~7 X the human exposure at 10 mg daily based on AUC<sub>0-24hr</sub> for total ezetimibe).

#### 13.2 Animal Toxicology and/or Pharmacology

The hypocholesterolemic effect of ezetimibe was evaluated in cholesterol-fed Rhesus monkeys, dogs, rats, and mouse models of human cholesterol metabolism. Ezetimibe was found to have an ED<sub>50</sub> value of 0.5 µg/kg/day for inhibiting the rise in plasma cholesterol levels in monkeys. The ED<sub>50</sub> values in dogs, rats, and mice were 7, 30, and 700 µg/kg/day, respectively. These results are consistent with ZETIA being a potent cholesterol absorption inhibitor.

ZETIA® (ezetimibe) Tablets

XXXXXXXXXX  
REV XX

In a rat model, where the glucuronide metabolite of ezetimibe (SCH 60663) was administered intraduodenally, the metabolite was as potent as the parent compound (SCH 58235) in inhibiting the absorption of cholesterol, suggesting that the glucuronide metabolite had activity similar to the parent drug.

In 1-month studies in dogs given ezetimibe (0.03 to 300 mg/kg/day), the concentration of cholesterol in gallbladder bile increased ~2- to 4-fold. However, a dose of 300 mg/kg/day administered to dogs for one year did not result in gallstone formation or any other adverse hepatobiliary effects. In a 14-day study in mice given ezetimibe (0.3 to 5 mg/kg/day) and fed a low-fat or cholesterol-rich diet, the concentration of cholesterol in gallbladder bile was either unaffected or reduced to normal levels, respectively.

A series of acute preclinical studies was performed to determine the selectivity of ZETIA for inhibiting cholesterol absorption. Ezetimibe inhibited the absorption of <sup>14</sup>C-cholesterol with no effect on the absorption of triglycerides, fatty acids, bile acids, progesterone, ethinyl estradiol, or the fat-soluble vitamins A and D.

In 4- to 12-week toxicity studies in mice, ezetimibe did not induce cytochrome P450 drug metabolizing enzymes. In toxicity studies, a pharmacokinetic interaction of ezetimibe with statins (parents or their active hydroxy acid metabolites) was seen in rats, dogs, and rabbits.

## 14 CLINICAL STUDIES

### 14.1 Primary Hyperlipidemia

ZETIA reduces total-C, LDL-C, Apo B, and TG, and increases HDL-C in patients with hyperlipidemia. Maximal to near maximal response is generally achieved within 2 weeks and maintained during chronic therapy.

#### *Monotherapy*

In two multicenter, double-blind, placebo-controlled, 12-week studies in 1719 patients with primary hyperlipidemia, ZETIA significantly lowered total-C, LDL-C, Apo B, and TG, and increased HDL-C compared to placebo (see **Table 6**). Reduction in LDL-C was consistent across age, sex, and baseline LDL-C.

**TABLE 6: Response to ZETIA in Patients with Primary Hyperlipidemia  
(Mean\* % Change from Untreated Baseline<sup>†</sup>)**

	Treatment Group	N	Total-C	LDL-C	Apo B	TG*	HDL-C
<b>Study 1<sup>‡</sup></b>	Placebo	205	+1	+1	-1	-1	-1
	Ezetimibe	622	-12	-18	-15	-7	+1
<b>Study 2<sup>‡</sup></b>	Placebo	226	+1	+1	-1	+2	-2
	Ezetimibe	666	-12	-18	-16	-9	+1
<b>Pooled Data<sup>‡</sup> (Studies 1 &amp; 2)</b>	Placebo	431	0	+1	-2	0	-2
	Ezetimibe	1288	-13	-18	-16	-8	+1

\* For triglycerides, median % change from baseline

<sup>†</sup> Baseline - on no lipid-lowering drug

<sup>‡</sup> ZETIA significantly reduced total-C, LDL-C, Apo B, and TG, and increased HDL-C compared to placebo.

#### *Combination with Statins*

##### *ZETIA Added to On-going Statin Therapy*

In a multicenter, double-blind, placebo-controlled, 8-week study, 769 patients with primary hyperlipidemia, known coronary heart disease or multiple cardiovascular risk factors who were already receiving statin monotherapy, but who had not met their NCEP ATP II target LDL-C goal were randomized to receive either ZETIA or placebo in addition to their on-going statin.

ZETIA® (ezetimibe) Tablets

XXXXXXXXXX  
REV XX

ZETIA, added to on-going statin therapy, significantly lowered total-C, LDL-C, Apo B, and TG, and increased HDL-C compared with a statin administered alone (see **Table 7**). LDL-C reductions induced by ZETIA were generally consistent across all statins.

**TABLE 7: Response to Addition of ZETIA to On-Going Statin Therapy\* in Patients with Hyperlipidemia (Mean<sup>†</sup> % Change from Treated Baseline<sup>‡</sup>)**

Treatment (Daily Dose)	N	Total-C	LDL-C	Apo B	TG <sup>†</sup>	HDL-C
On-going Statin + Placebo <sup>§</sup>	390	-2	-4	-3	-3	+1
On-going Statin + ZETIA <sup>§</sup>	379	-17	-25	-19	-14	+3

\* Patients receiving each statin: 40% atorvastatin, 31% simvastatin, 29% others (pravastatin, fluvastatin, cerivastatin, lovastatin)

<sup>†</sup> For triglycerides, median % change from baseline

<sup>‡</sup> Baseline - on a statin alone.

<sup>§</sup> ZETIA + statin significantly reduced total-C, LDL-C, Apo B, and TG, and increased HDL-C compared to statin alone.

*ZETIA Initiated Concurrently with a Statin*

In four multicenter, double-blind, placebo-controlled, 12-week trials, in 2382 hyperlipidemic patients, ZETIA or placebo was administered alone or with various doses of atorvastatin, simvastatin, pravastatin, or lovastatin.

When all patients receiving ZETIA with a statin were compared to all those receiving the corresponding statin alone, ZETIA significantly lowered total-C, LDL-C, Apo B, and TG, and, with the exception of pravastatin, increased HDL-C compared to the statin administered alone. LDL-C reductions induced by ZETIA were generally consistent across all statins. (See footnote <sup>‡</sup>, **Tables 8 to 11**.)

**TABLE 8: Response to ZETIA and Atorvastatin Initiated Concurrently in Patients with Primary Hyperlipidemia (Mean\* % Change from Untreated Baseline<sup>†</sup>)**

Treatment (Daily Dose)	N	Total-C	LDL-C	Apo B	TG*	HDL-C
Placebo	60	+4	+4	+3	-6	+4
ZETIA	65	-14	-20	-15	-5	+4
Atorvastatin 10 mg	60	-26	-37	-28	-21	+6
ZETIA + Atorvastatin 10 mg	65	-38	-53	-43	-31	+9
Atorvastatin 20 mg	60	-30	-42	-34	-23	+4
ZETIA + Atorvastatin 20 mg	62	-39	-54	-44	-30	+9
Atorvastatin 40 mg	66	-32	-45	-37	-24	+4
ZETIA + Atorvastatin 40 mg	65	-42	-56	-45	-34	+5
Atorvastatin 80 mg	62	-40	-54	-46	-31	+3
ZETIA + Atorvastatin 80 mg	63	-46	-61	-50	-40	+7
Pooled data (All Atorvastatin Doses) <sup>‡</sup>	248	-32	-44	-36	-24	+4
Pooled data (All ZETIA + Atorvastatin Doses) <sup>‡</sup>	255	-41	-56	-45	-33	+7

\* For triglycerides, median % change from baseline

<sup>†</sup> Baseline - on no lipid-lowering drug

ZETIA® (ezetimibe) Tablets

XXXXXXXXXX  
REV XX

‡ ZETIA + all doses of atorvastatin pooled (10-80 mg) significantly reduced total-C, LDL-C, Apo B, and TG, and increased HDL-C compared to all doses of atorvastatin pooled (10-80 mg).

ZETIA® (ezetimibe) Tablets

XXXXXXXXXX  
REV XX

**TABLE 9: Response to ZETIA and Simvastatin Initiated Concurrently  
in Patients with Primary Hyperlipidemia  
(Mean\* % Change from Untreated Baseline†)**

Treatment (Daily Dose)	N	Total-C	LDL-C	Apo B	TG*	HDL-C
Placebo	70	-1	-1	0	+2	+1
ZETIA	61	-13	-19	-14	-11	+5
Simvastatin 10 mg	70	-18	-27	-21	-14	+8
ZETIA + Simvastatin 10 mg	67	-32	-46	-35	-26	+9
Simvastatin 20 mg	61	-26	-36	-29	-18	+6
ZETIA + Simvastatin 20 mg	69	-33	-46	-36	-25	+9
Simvastatin 40 mg	65	-27	-38	-32	-24	+6
ZETIA + Simvastatin 40 mg	73	-40	-56	-45	-32	+11
Simvastatin 80 mg	67	-32	-45	-37	-23	+8
ZETIA + Simvastatin 80 mg	65	-41	-58	-47	-31	+8
Pooled data (All Simvastatin Doses)‡	263	-26	-36	-30	-20	+7
Pooled data (All ZETIA + Simvastatin Doses)‡	274	-37	-51	-41	-29	+9

\* For triglycerides, median % change from baseline

† Baseline - on no lipid-lowering drug

‡ ZETIA + all doses of simvastatin pooled (10-80 mg) significantly reduced total-C, LDL-C, Apo B, and TG, and increased HDL-C compared to all doses of simvastatin pooled (10-80 mg).

**TABLE 10: Response to ZETIA and Pravastatin Initiated Concurrently  
in Patients with Primary Hyperlipidemia  
(Mean\* % Change from Untreated Baseline†)**

Treatment (Daily Dose)	N	Total-C	LDL-C	Apo B	TG*	HDL-C
Placebo	65	0	-1	-2	-1	+2
ZETIA	64	-13	-20	-15	-5	+4
Pravastatin 10 mg	66	-15	-21	-16	-14	+6
ZETIA + Pravastatin 10 mg	71	-24	-34	-27	-23	+8
Pravastatin 20 mg	69	-15	-23	-18	-8	+8
ZETIA + Pravastatin 20 mg	66	-27	-40	-31	-21	+8
Pravastatin 40 mg	70	-22	-31	-26	-19	+6
ZETIA + Pravastatin 40 mg	67	-30	-42	-32	-21	+8
Pooled data (All Pravastatin Doses)‡	205	-17	-25	-20	-14	+7
Pooled data (All ZETIA + Pravastatin Doses)‡	204	-27	-39	-30	-21	+8

\* For triglycerides, median % change from baseline

† Baseline - on no lipid-lowering drug

‡ ZETIA + all doses of pravastatin pooled (10-40 mg) significantly reduced total-C, LDL-C, Apo B, and TG compared to all doses of pravastatin pooled (10-40 mg).

ZETIA® (ezetimibe) Tablets

XXXXXXXXXX  
REV XX

**TABLE 11: Response to ZETIA and Lovastatin Initiated Concurrently in Patients with Primary Hyperlipidemia (Mean\* % Change from Untreated Baseline†)**

Treatment (Daily Dose)	N	Total-C	LDL-C	Apo B	TG*	HDL-C
Placebo	64	+1	0	+1	+6	0
ZETIA	72	-13	-19	-14	-5	+3
Lovastatin 10 mg	73	-15	-20	-17	-11	+5
ZETIA + Lovastatin 10 mg	65	-24	-34	-27	-19	+8
Lovastatin 20 mg	74	-19	-26	-21	-12	+3
ZETIA + Lovastatin 20 mg	62	-29	-41	-34	-27	+9
Lovastatin 40 mg	73	-21	-30	-25	-15	+5
ZETIA + Lovastatin 40 mg	65	-33	-46	-38	-27	+9
Pooled data (All Lovastatin Doses)‡	220	-18	-25	-21	-12	+4
Pooled data (All ZETIA + Lovastatin Doses)‡	192	-29	-40	-33	-25	+9

\* For triglycerides, median % change from baseline

† Baseline - on no lipid-lowering drug

‡ ZETIA + all doses of lovastatin pooled (10-40 mg) significantly reduced total-C, LDL-C, Apo B, and TG, and increased HDL-C compared to all doses of lovastatin pooled (10-40 mg).

#### Combination with Fenofibrate

In a multicenter, double-blind, placebo-controlled, clinical study in patients with mixed hyperlipidemia, 625 patients were treated for up to 12 weeks and 576 for up to an additional 48 weeks. Patients were randomized to receive placebo, ZETIA alone, 160 mg fenofibrate alone, or ZETIA and 160 mg fenofibrate in the 12-week study. After completing the 12-week study, eligible patients were assigned to ZETIA co-administered with fenofibrate or fenofibrate monotherapy for an additional 48 weeks.

ZETIA co-administered with fenofibrate significantly lowered total-C, LDL-C, Apo B, and non-HDL-C compared to fenofibrate administered alone. The percent decrease in TG and percent increase in HDL-C for ZETIA co-administered with fenofibrate were comparable to those for fenofibrate administered alone (see **Table 12**).

**TABLE 12: Response to ZETIA and Fenofibrate Initiated Concurrently in Patients with Mixed Hyperlipidemia (Mean\* % Change from Untreated Baseline† at 12 weeks)**

Treatment (Daily Dose)	N	Total-C	LDL-C	Apo B	TG*	HDL-C	Non-HDL-C
Placebo	63	0	0	-1	-9	+3	0
ZETIA	185	-12	-13	-11	-11	+4	-15
Fenofibrate 160 mg	188	-11	-6	-15	-43	+19	-16
ZETIA + Fenofibrate 160 mg	183	-22	-20	-26	-44	+19	-30

\* For triglycerides, median % change from baseline

† Baseline - on no lipid-lowering drug

The changes in lipid endpoints after an additional 48 weeks of treatment with ZETIA co-administered with fenofibrate or with fenofibrate alone were consistent with the 12-week data displayed above.

#### 14.2 Homozygous Familial Hypercholesterolemia (HoFH)

A study was conducted to assess the efficacy of ZETIA in the treatment of HoFH. This double-blind, randomized, 12-week study enrolled 50 patients with a clinical and/or genotypic diagnosis of HoFH, with

ZETIA® (ezetimibe) Tablets

XXXXXXXXXX  
REV XX

or without concomitant LDL apheresis, already receiving atorvastatin or simvastatin (40 mg). Patients were randomized to one of three treatment groups, atorvastatin or simvastatin (80 mg), ZETIA administered with atorvastatin or simvastatin (40 mg), or ZETIA administered with atorvastatin or simvastatin (80 mg). Due to decreased bioavailability of ezetimibe in patients concomitantly receiving cholestyramine [see *Drug Interactions (7.1)*], ezetimibe was dosed at least 4 hours before or after administration of resins. Mean baseline LDL-C was 341 mg/dL in those patients randomized to atorvastatin 80 mg or simvastatin 80 mg alone and 316 mg/dL in the group randomized to ZETIA plus atorvastatin 40 or 80 mg or simvastatin 40 or 80 mg. ZETIA, administered with atorvastatin or simvastatin (40 and 80 mg statin groups, pooled), significantly reduced LDL-C (21%) compared with increasing the dose of simvastatin or atorvastatin monotherapy from 40 to 80 mg (7%). In those treated with ZETIA plus 80 mg atorvastatin or with ZETIA plus 80 mg simvastatin, LDL-C was reduced by 27%.

#### 14.3 Homozygous Sitosterolemia (Phytosterolemia)

A study was conducted to assess the efficacy of ZETIA in the treatment of homozygous sitosterolemia. In this multicenter, double-blind, placebo-controlled, 8-week trial, 37 patients with homozygous sitosterolemia with elevated plasma sitosterol levels (>5 mg/dL) on their current therapeutic regimen (diet, bile-acid-binding resins, statins, ileal bypass surgery and/or LDL apheresis), were randomized to receive ZETIA (n=30) or placebo (n=7). Due to decreased bioavailability of ezetimibe in patients concomitantly receiving cholestyramine [see *Drug Interactions (7.1)*], ezetimibe was dosed at least 2 hours before or 4 hours after resins were administered. Excluding the one subject receiving LDL apheresis, ZETIA significantly lowered plasma sitosterol and campesterol, by 21% and 24% from baseline, respectively. In contrast, patients who received placebo had increases in sitosterol and campesterol of 4% and 3% from baseline, respectively. For patients treated with ZETIA, mean plasma levels of plant sterols were reduced progressively over the course of the study. The effects of reducing plasma sitosterol and campesterol on reducing the risks of cardiovascular morbidity and mortality have not been established.

Reductions in sitosterol and campesterol were consistent between patients taking ZETIA concomitantly with bile acid sequestrants (n=8) and patients not on concomitant bile acid sequestrant therapy (n=21).

#### Limitations of Use

The effect of ZETIA on cardiovascular morbidity and mortality has not been determined.

## 16 HOW SUPPLIED/STORAGE AND HANDLING

No. 3861 — Tablets ZETIA, 10 mg, are white to off-white, capsule-shaped tablets debossed with “414” on one side. They are supplied as follows:

- NDC 66582-414-31 bottles of 30
- NDC 66582-414-54 bottles of 90
- NDC 66582-414-74 bottles of 500
- NDC 66582-414-76 bottles of 5000
- NDC 66582-414-28 unit dose packages of 100.

#### Storage

Store at 25°C (77°F); excursions permitted to 15-30°C (59-86°F). [See USP Controlled Room Temperature.] Protect from moisture.

## 17 PATIENT COUNSELING INFORMATION

[See FDA-approved Patient Labeling (17.5).]

Patients should be advised to adhere to their National Cholesterol Education Program (NCEP)-recommended diet, a regular exercise program, and periodic testing of a fasting lipid panel.

ZETIA® (ezetimibe) Tablets

XXXXXXXXXT  
REV XX

### 17.1 Muscle Pain

All patients starting therapy with ezetimibe should be advised of the risk of myopathy and told to report promptly any unexplained muscle pain, tenderness or weakness. The risk of this occurring is increased when taking certain types of medication. Patients should discuss all medication, both prescription and over-the-counter, with their physician.

### 17.2 Liver Enzymes

Liver tests should be performed when ZETIA is added to statin therapy and according to statin recommendations.

### 17.3 Pregnancy

Women of childbearing age should be advised to use an effective method of birth control to prevent pregnancy while using ZETIA added to statin therapy. Discuss future pregnancy plans with your patients, and discuss when to stop combination ZETIA and statin therapy if they are trying to conceive. Patients should be advised that if they become pregnant they should stop taking combination ZETIA and statin therapy and call their healthcare professional.

### 17.4 Breastfeeding

Women who are breastfeeding should be advised to not use ZETIA added to statin therapy. Patients who have a lipid disorder and are breastfeeding should be advised to discuss the options with their healthcare professionals.

### 17.5 FDA-approved Patient Labeling

---

XXXXXXXXXT  
REV XX

Issued XXX 2008

Printed in USA.

U.S. Patent Nos. 5,846,966; 7,030,106 and RE37,721.



MERCK / Schering-Plough Pharmaceuticals

Manufactured for:  
Merck/Schering-Plough Pharmaceuticals  
North Wales, PA 19454, USA

By:  
Schering Corporation  
Kenilworth, NJ 07033, USA

or  
Merck & Co., Inc.  
Whitehouse Station, NJ 08889, USA