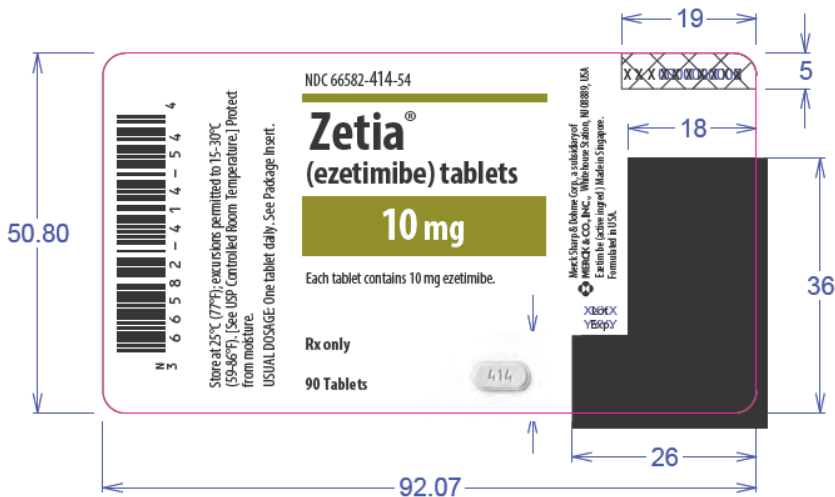


This label may not be the latest approved by FDA.

For current labeling information, please visit <https://www.fda.gov/drugsatfda>



LEGEND:

XXXX YYYY Lot and Exp Legends

Lot and Exp Legend Example
 Lot: 12345678901234567890
 Exp: 12/14/15



MASTER ARTWORK FILE

Optical Character Verification Zone
 All characters in this region must fit the following specifications:
 Type font to be Opt OCRB.
 There must be at least 1/2 character space above and below the characters.
 There must be at least 1/2 character space before and after the characters.

Designer: _____ Date: _____

Proofreader: _____ Date: _____

COLOR LEGEND

(b) (4)

NOTES:

File Name: **6184200_v1**

NO Revision

Merck and CO., Inc.

(b) (4) n/a 01 Increased laser encoding area from 15mm to 18mm

02 Changed to 50% screen coating over lot and exp. per QMYK

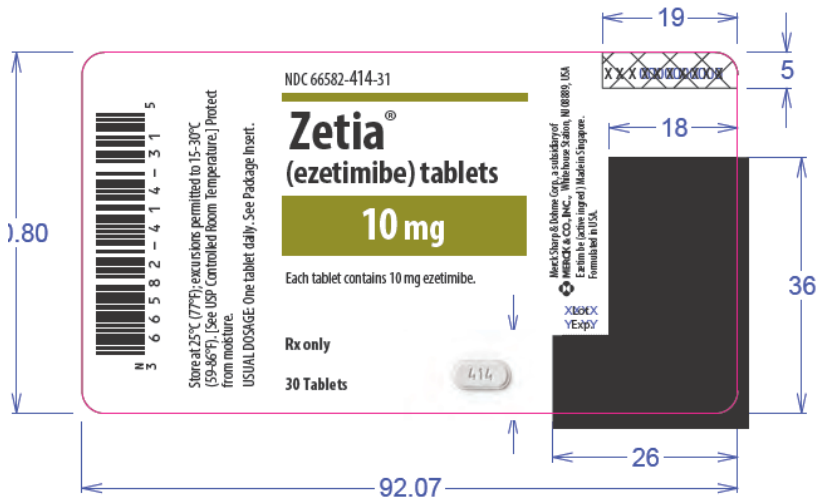
BUSINESS CONFIDENTIAL

NOTES: Live barcodes provided on artwork unless otherwise noted.
 PDF provided at actual size (100%). The supplier is not to make any layout changes without written approval of Merck.

Dieline does not print

LAB008-02

Mock-Up Workflows: Placeholders ("X") where component number will be placed upon approval.



ND:

Lot and Exp Legends

Lot # 414-10-01
 Mfg 11/18 exp 02/20

MASTER ARTWORK FILE

Designer: _____ Date: _____

Proofreader: _____ Date: _____

File Name: 6184100_v1

NO Revision

(b) (4) n/a 01 Increased laser encoding area from 15mm to 18mm.

02 Changed to 50% screen coating one of the 30 tablets.

Merck and CO., Inc.

BUSINESS CONFIDENTIAL

Dieline does not print.

LAB008-02

NOTES: Live barcodes provided on artwork unless otherwise noted. PDF provided at actual size (100%). The supplier is not to make any layout changes without written approval of Merck.

Meck-Up Workflows: Placeholders ("X") where component number will be placed upon approval.

This label may not be the latest approved by FDA.
 current labeling information, please visit <https://www.fda.gov/drugsat>

NDC 66582-414-76

Zetia[®]

(ezetimibe) tablets

10 mg

Each tablet contains 10 mg ezetimibe.
 Store at 25°C (77°F); excursions permitted to 15-30°C (59-86°F).
 [See USP Controlled Room Temperature.] Protect from moisture.
 USUAL DOSAGE: One tablet daily. See Package Insert.
 This is a bulk package and not intended for dispensing.
 Package not child resistant. Dispense in tightly-closed container
 as defined in USP/NF.

Rx only

5,000 Tablets

414

XD6X
Y5XP

Merck Sharp & Dohme Corp., a subsidiary of
MERCK & CO., INC.
 Whitehouse Station, NJ 08889, USA
 Ezetimibe (active ingredient) Made in Singapore.
 ©Manufactured in USA.

XXXXXXXXXX

77.79

26

36

LEGEND:

Lot and Exp Laser Encoding Area
 Must be Black. 50% screen coating.

XXXX YYYY Lot and Exp Legends

Optical Character Verification Zone
 All characters in this region must comply
 with the following specifications:
 1) Type font to be Spl OCRB.
 2) There must be at least 1/2 character space
 of quiet zone above and below the characters.
 3) There must be at least 1/2 character space
 of quiet zone before, after, and between the characters.

NOTES:	NO Revision	Merck and CO.,
(b) (4)	01 Increased laser encoding area from 15mm to 18mm.	
	02 Changed to 50% screen coating over lot and exp area	BUSINESS CONFIC

MASTER ARTWORK FILE

Designer: _____ Date: _____

Proofreader: _____ Date: _____

File Name: 6184400_v1

GTIN*: n/a
 * if applicable

NOTES: Live barcodes provided on artwork, unless otherwise noted,
 PDF provided at actual size (100%). The supplier is not to make
 any layout changes without written approval of Merck,
 Meck-Up Workflows: Placeholders ("X") where component number
 will be placed upon approval.

COLOR LEGEND

(b) (4)

Tablet printed 4-color (CMYK).
 Dieline does not print.

LAB009

WL_CTN_98.43 x 30.16 x 133.35mm-SK02

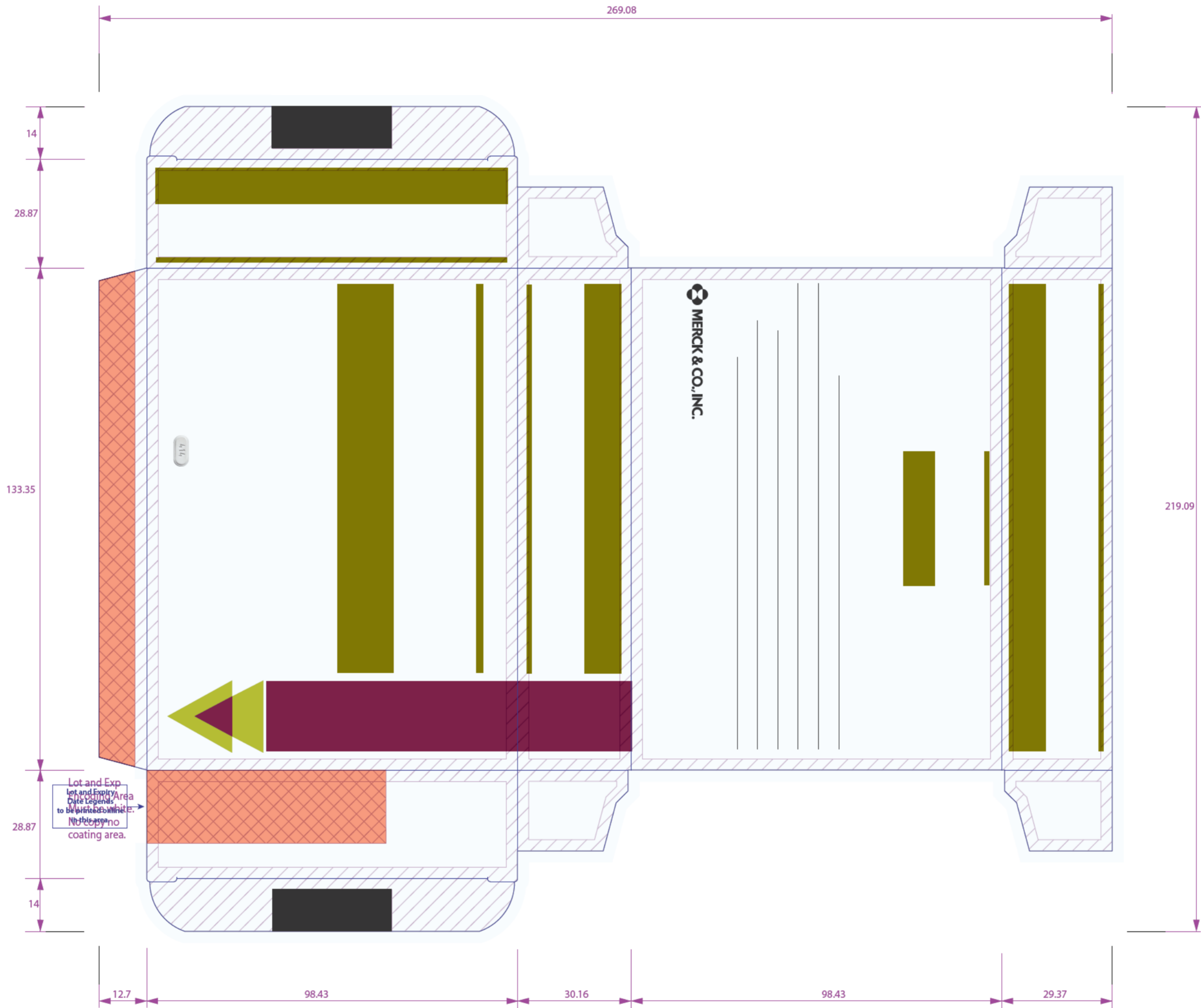
Bar prints 100mm @ 100%

MERCK ARTWORK

File Name & Version: 6184501_v1
 GTIN (if applicable): n/a
 Designer & Date: (b) (6) (US AWC), 27-May-2014
 Proofreader & Date: n/a

(b) (4)

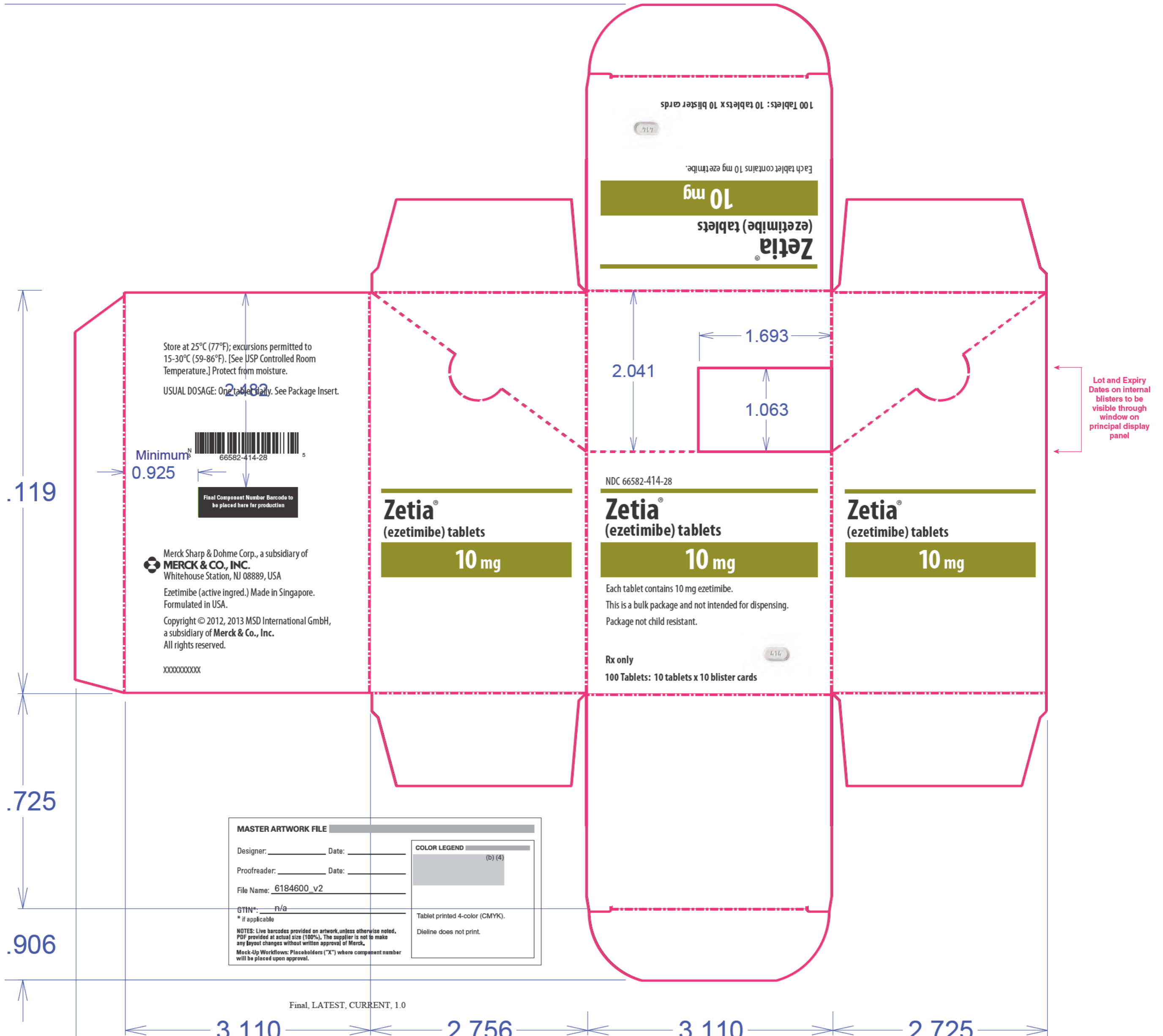
(b) (4) NOTES: Live barcodes provided on artwork, unless otherwise noted. PDF provided at actual size (100%). The supplier is not to make any layout changes with written approval of Merck.
 Mock-Up Workflows: Placeholders ("X") where component number will be placed upon approval.



MERCK PROFILE

Profile: WL_CTN_98.43 x 30.16 x 133.35mm
 Profile Revision: 0
 Profile Revision Date: 100713
 Dimensions (mm): 98.43x30.16x133.35

Over Sticker	Varnish Free	Text Free
Plant Code	Braille Grid	Tamper Evident
Profile	Perforation	Fold



This is a representation of an electronic record that was signed electronically and this page is the manifestation of the electronic signature.

/s/

RAMESH RAGHAVACHARI

09/30/2014