

HIGHLIGHTS OF PRESCRIBING INFORMATION

These highlights do not include all the information needed to use DALVANCE® safely and effectively. See full prescribing information for DALVANCE.

DALVANCE (dalbavancin) for injection, for intravenous use
Initial U.S. Approval: 2014

RECENT MAJOR CHANGES

- Dosage and Administration (2) 01/2016

INDICATIONS AND USAGE

DALVANCE is indicated for acute bacterial skin and skin structure infections (ABSSSI) caused by designated susceptible strains of Gram-positive microorganisms. (1.1)

To reduce the development of drug-resistant bacteria and maintain the effectiveness of DALVANCE and other antibacterial drugs, DALVANCE should be used only to treat infections that are proven or strongly suspected to be caused by susceptible bacteria. (1.2)

DOSAGE AND ADMINISTRATION

- Dosage in patients with normal or impaired renal function (2.1, 2.2):

Estimated CrCl	Single Dose Regimen	Two-Dose Regimen
≥ 30 mL/min or on regular hemodialysis	1500 mg	1000 mg followed one week later by 500 mg
< 30 mL/min and not on regular hemodialysis	1125 mg	750 mg followed one week later by 375 mg

- Administer by intravenous infusion over 30 minutes (2.1, 2.3)
- See Full Prescribing Information for instructions on reconstitution of lyophilized powder and preparation of injection (2.3)

DOSAGE FORMS AND STRENGTHS

For injection: 500 mg of lyophilized powder in a vial for reconstitution (3)

CONTRAINDICATIONS

Hypersensitivity to dalbavancin (4)

WARNINGS AND PRECAUTIONS

- Serious hypersensitivity (anaphylactic) and skin reactions have been reported with glycopeptide antibacterial agents, including DALVANCE; exercise caution in patients with known hypersensitivity to glycopeptides. (5.1)
- Rapid intravenous infusion of glycopeptide antibacterial agents can cause reactions. (5.2)
- ALT elevations with DALVANCE treatment were reported in clinical trials. (5.3)
- Clostridium difficile*-associated diarrhea (CDAD) has been reported with nearly all systemic antibacterial agents, including DALVANCE. Evaluate if diarrhea occurs. (5.4)

ADVERSE REACTIONS

The most common adverse reactions in patients treated with DALVANCE were nausea (4.7%), headache (3.8%), and diarrhea (3.4%). (6.1)

To report SUSPECTED ADVERSE REACTIONS, contact Durata Therapeutics, Inc. at 1-855-387-2825 or FDA at 1-800-FDA-1088 or www.fda.gov/medwatch.

USE IN SPECIFIC POPULATIONS

Dosage adjustment is required in patients whose creatinine clearance is less than 30 mL/min and who are not receiving regularly scheduled hemodialysis. (2.2, 8.6)

See 17 for PATIENT COUNSELING INFORMATION

Revised 01/2016

FULL PRESCRIBING INFORMATION: CONTENTS*

1 INDICATION AND USAGE

- Acute Bacterial Skin and Skin Structure Infections
- Usage

2 DOSAGE AND ADMINISTRATION

- Recommended Dosage Regimen
- Dosage in Patients with Renal Impairment
- Preparation and Administration

3 DOSAGE FORMS AND STRENGTHS

4 CONTRAINDICATIONS

5 WARNINGS AND PRECAUTIONS

- Hypersensitivity Reactions
- Infusion-Related Reactions
- Hepatic Effects
- Clostridium difficile*-Associated Diarrhea
- Development of Drug-Resistant Bacteria

6 ADVERSE REACTIONS

- Clinical Trials Experience

7 DRUG INTERACTIONS

- Drug-Laboratory Test Interactions
- Drug-Drug Interactions

8 USE IN SPECIFIC POPULATIONS

- Pregnancy
- Lactation
- Pediatric Use
- Geriatric Use
- Renal Impairment
- Hepatic Impairment

10 OVERDOSAGE

11 DESCRIPTION

12 CLINICAL PHARMACOLOGY

- Mechanism of Action
- Pharmacodynamics
- Pharmacokinetics
- Microbiology

13 NONCLINICAL TOXICOLOGY

- Carcinogenesis, Mutagenesis, Impairment of Fertility
- Animal Toxicology and/or Pharmacology

14 CLINICAL STUDIES

15 REFERENCES

16 HOW SUPPLIED/STORAGE AND HANDLING

17 PATIENT COUNSELING INFORMATION

*Sections or subsections omitted from the full prescribing information are not listed

FULL PRESCRIBING INFORMATION

1 INDICATION AND USAGE

1.1 Acute Bacterial Skin and Skin Structure Infections

DALVANCE® (dalbavancin) for injection is indicated for the treatment of adult patients with acute bacterial skin and skin structure infections (ABSSSI), caused by susceptible isolates of the following Gram-positive microorganisms: *Staphylococcus aureus* (including methicillin-susceptible and methicillin-resistant strains), *Streptococcus pyogenes*, *Streptococcus agalactiae*, *Streptococcus dysgalactiae*, *Streptococcus anginosus* group (including *S. anginosus*, *S. intermedius*, *S. constellatus*) and *Enterococcus faecalis* (vancomycin susceptible strains).

1.2 Usage

To reduce the development of drug-resistant bacteria and maintain the effectiveness of DALVANCE and other antibacterial agents, DALVANCE should be used only to treat infections that are proven or strongly suspected to be caused by susceptible bacteria. When culture and susceptibility information are available, they should be considered in selecting or modifying antibacterial therapy. In the absence of such data, local epidemiology and susceptibility patterns may contribute to the empiric selection of therapy.

2 DOSAGE AND ADMINISTRATION

2.1 Recommended Dosage Regimen

The recommended dosage regimen of DALVANCE in patients with normal renal function is 1500 mg, administered either as a single dose, or 1000 mg followed one week later by 500 mg. DALVANCE should be administered over 30 minutes by intravenous infusion [see *Dosage and Administration* (2.3)].

2.2 Dosage in Patients with Renal Impairment

In patients with renal impairment whose known creatinine clearance is less than 30 mL/min and who are not receiving regularly scheduled hemodialysis, the recommended regimen of DALVANCE is 1125 mg, administered as a single dose, or 750 mg followed one week later by 375 mg (see [Table 1](#)). No dosage adjustment is recommended for patients receiving regularly scheduled hemodialysis, and DALVANCE can be administered without regard to the timing of hemodialysis [see *Use in Specific Populations* (8.5), *Clinical Pharmacology* (12.3)].

Table 1. Dosage of DALVANCE in Patients with Renal Impairment

Estimated CrCl*	DALVANCE Single Dose Regimen**	DALVANCE Two-Dose Regimen**
≥ 30 mL/min or on regular hemodialysis	1500 mg	1000 mg followed one week later by 500 mg
< 30 mL/min and not on regular hemodialysis	1125 mg	750 mg followed one week later by 375 mg

* as calculated using the Cockcroft-Gault formula

** administered intravenously over 30 minutes

2.3 Preparation and Administration

DALVANCE (dalbavancin) for injection must be reconstituted with either Sterile Water for Injection, USP, or 5% Dextrose Injection, USP, and subsequently diluted only with 5% Dextrose Injection, USP, to a final concentration of 1 mg/mL to 5 mg/mL.

Reconstitution: DALVANCE must be reconstituted under aseptic conditions, using 25 mL of either Sterile Water for Injection, USP, or 5% Dextrose Injection, USP, for each 500 mg vial. To avoid foaming, alternate between gentle swirling and inversion of the vial until its contents are completely dissolved. Do not shake. The reconstituted vial contains 20 mg/mL dalbavancin as a clear, colorless to yellow solution.

Reconstituted vials may be stored either refrigerated at 2 to 8 °C (36 to 46 °F), or at controlled room temperature 20 to 25 °C (68 to 77 °F). Do not freeze.

Dilution: Aseptically transfer the required dose of reconstituted dalbavancin solution from the vial(s) to an intravenous bag or bottle containing 5% Dextrose Injection, USP. The diluted solution must have a final dalbavancin concentration of 1 mg/mL to 5 mg/mL. Discard any unused portion of the reconstituted solution.

Once diluted into an intravenous bag or bottle as described above, DALVANCE may be stored either refrigerated at 2 to 8 °C (36 to 46 °F) or at a controlled room temperature of 20 to 25 °C (68 to 77 °F). Do not freeze.

The total time from reconstitution to dilution to administration should not exceed 48 hours.

Like all parenteral drug products, diluted DALVANCE should be inspected visually for particulate matter prior to infusion. If particulate matter is identified, do not use.

Administration: After reconstitution and dilution, DALVANCE is to be administered via intravenous infusion, using a total infusion time of 30 minutes.

Do not co-infuse DALVANCE with other medications or electrolytes. Saline-based infusion solutions may cause precipitation and should not be used. The compatibility of reconstituted DALVANCE with intravenous medications, additives, or substances other than 5% Dextrose Injection, USP has not been established.

If a common intravenous line is being used to administer other drugs in addition to DALVANCE, the line should be flushed before and after each DALVANCE infusion with 5% Dextrose Injection, USP.

3 DOSAGE FORMS AND STRENGTHS

DALVANCE is supplied in clear glass vials containing sterile powder (white/off-white to pale yellow) equivalent to 500 mg of dalbavancin.

4 CONTRAINDICATIONS

DALVANCE is contraindicated in patients with known hypersensitivity to dalbavancin. No data are available on cross-reactivity between dalbavancin and other glycopeptides, including vancomycin.

5 WARNINGS AND PRECAUTIONS

5.1 Hypersensitivity Reactions

Serious hypersensitivity (anaphylactic) and skin reactions have been reported in patients treated with DALVANCE. If an allergic reaction occurs, treatment with DALVANCE should be discontinued. Before using DALVANCE, inquire carefully about previous hypersensitivity reactions to glycopeptides, and due to the possibility of cross-sensitivity, exercise caution in patients with a history of glycopeptide allergy [see *Patient Counseling Information (17)*].

5.2 Infusion-Related Reactions

DALVANCE is administered via intravenous infusion, using a total infusion time of 30 minutes to minimize the risk of infusion-related reactions. Rapid intravenous infusions of DALVANCE can cause reactions that resemble “Red-Man Syndrome,” including flushing of the upper body, urticaria, pruritus, and/or rash. Stopping or slowing the infusion may result in cessation of these reactions.

5.3 Hepatic Effects

In Phase 2 and 3 clinical trials, more DALVANCE than comparator-treated subjects with normal baseline transaminase levels had post-baseline alanine aminotransferase (ALT) elevation greater than 3 times the upper limit of normal (ULN). Overall, abnormalities in liver tests (ALT, AST, bilirubin) were reported with similar frequency in the DALVANCE and comparator arms [see *Adverse Reactions (6.1)*].

5.4 *Clostridium difficile*-Associated Diarrhea

Clostridium difficile-associated diarrhea (CDAD) has been reported in users of nearly all systemic antibacterial drugs, including DALVANCE, with severity ranging from mild diarrhea to fatal colitis. Treatment with antibacterial agents can alter the normal flora of the colon, and may permit overgrowth of *C. difficile*.

C. difficile produces toxins A and B which contribute to the development of CDAD. Hypertoxin-producing strains of *C. difficile* cause increased morbidity and mortality, as these infections can be refractory to antibacterial therapy and may require colectomy. CDAD must be considered in all patients who present with diarrhea following antibacterial use. Careful medical history is necessary because CDAD has been reported to occur more than 2 months after the administration of antibacterial agents.

If CDAD is suspected or confirmed, ongoing antibacterial use not directed against *C. difficile* should be discontinued, if possible. Appropriate measures such as fluid and electrolyte management, protein supplementation, antibacterial treatment of *C. difficile*, and surgical evaluation should be instituted as clinically indicated.

5.5 Development of Drug-Resistant Bacteria

Prescribing DALVANCE in the absence of a proven or strongly suspected bacterial infection is unlikely to provide benefit to the patient and increases the risk of the development of drug-resistant bacteria.

6 ADVERSE REACTIONS

6.1 Clinical Trials Experience

Because clinical trials are conducted under widely varying conditions, adverse reaction rates observed in clinical trials of DALVANCE cannot be directly compared to rates in the clinical trials of another drug and may not reflect rates observed in practice.

Adverse reactions were evaluated for 2473 patients treated with DALVANCE: 1778 patients were treated with DALVANCE in seven Phase 2/3 trials comparing DALVANCE to comparator antibacterial drugs and 695 patients were treated with DALVANCE in one Phase 3 trial comparing DALVANCE single and two-dose regimens. A causal relationship between study drug and adverse reactions was not always established. The median age of patients treated with DALVANCE was 48 years, ranging between 16 and 93 years. Patients treated with DALVANCE were predominantly male (59.5%) and White (81.2%).

Serious Adverse Reactions and Adverse Reactions Leading to Discontinuation

Serious adverse reactions occurred in 121/2473 (4.9%) of patients treated with any regimen of DALVANCE. In the Phase 2/3 trials comparing DALVANCE to comparator, serious adverse reactions occurred in 109/1778 (6.1%) of patients in the DALVANCE group and 80/1224 (6.5%) of patients in the comparator group. In a Phase 3 trial comparing DALVANCE single and two-dose regimens, serious adverse reactions occurred in 7/349 (2.0%) of patients in the DALVANCE single dose group and 5/346 (1.4%) of patients in the DALVANCE two-dose group. DALVANCE was discontinued due to an adverse reaction in 64/2473 (2.6%) patients treated with any regimen of DALVANCE. In the Phase 2/3 trials comparing DALVANCE to comparator, DALVANCE was discontinued due to an adverse reaction in 53/1778 (3.0%) of patients in the DALVANCE group and 35/1224 (2.9%) of patients in the comparator group. In a Phase 3 trial comparing DALVANCE single and two-dose regimens, DALVANCE was discontinued due to an adverse reaction in 6/349 (1.7%) of patients in the DALVANCE single dose group and 5/346 (1.4%) of patients in the DALVANCE two-dose group.

Most Common Adverse Reactions

The most common adverse reactions in patients treated with DALVANCE were nausea (4.7%), headache (3.8%), and diarrhea (3.4%). The median duration of adverse reactions was 3.0 days in patients treated with DALVANCE. In the Phase 2/3 trials comparing DALVANCE to comparator, the median duration of adverse reactions was 3.0 days for patients in the DALVANCE group and 4.0 days in patients in the comparator group. In a Phase 3 trial comparing DALVANCE single and two-dose regimens, the median duration of adverse reactions was 3.0 days for patients in the DALVANCE single and two-dose group.

[Table 2](#) lists selected adverse reactions occurring in 2% or more of patients treated with DALVANCE in Phase 2/3 clinical trials.

Table 2. Selected Adverse Reactions Occurring in $\geq 2\%$ of Patients Receiving DALVANCE in Phase 2/3 Trials (Number (%) of Patients)

Adverse Reactions	DALVANCE (N = 1778)	Comparator* (N = 1224)
Nausea	98 (5.5)	78 (6.4)
Vomiting	50 (2.8)	37 (3)
Diarrhea	79 (4.4)	72 (5.9)
Headache	83 (4.7)	59 (4.8)
Rash	48 (2.7)	30 (2.4)
Pruritus	38 (2.1)	41 (3.3)

* Comparators included linezolid, cefazolin, cephalexin, and vancomycin.

In the Phase 3 trial comparing the single and two-dose regimen of DALVANCE, the adverse reaction that occurred in 2% or more of patients treated with DALVANCE was nausea (3.4% in the DALVANCE single dose group and 2% in the DALVANCE two-dose group).

The following selected adverse reactions were reported in DALVANCE treated patients at a rate of less than 2% in these clinical trials:

Blood and lymphatic system disorders: anemia, hemorrhagic anemia, leucopenia, neutropenia, thrombocytopenia, petechiae, eosinophilia, thrombocytosis

Gastrointestinal disorders: gastrointestinal hemorrhage, melena, hematochezia, abdominal pain

General disorders and administration site conditions: infusion-related reactions

Hepatobiliary disorders: hepatotoxicity

Immune system disorders: anaphylactic reaction

Infections and infestations: *Clostridium difficile* colitis, oral candidiasis, vulvovaginal mycotic infection

Investigations: hepatic transaminases increased, blood alkaline phosphatase increased, international normalized ratio increased, blood lactate dehydrogenase increased, gamma-glutamyl transferase increased

Metabolism and nutrition disorders: hypoglycemia

Nervous system disorders: dizziness

Respiratory, thoracic and mediastinal disorders: bronchospasm

Skin and subcutaneous tissue disorders: rash, pruritus, urticaria

Vascular disorders: flushing, phlebitis, wound hemorrhage, spontaneous hematoma

Alanine Aminotransferase (ALT) Elevations

Among patients with normal baseline ALT levels treated with DALVANCE 17 (0.8%) had post-baseline ALT elevations greater than 3 times the upper limit of normal (ULN) including five subjects with post-baseline ALT values greater than 10 times ULN. Among patients with normal baseline ALT levels treated with non-DALVANCE comparators 2 (0.2%) had post-baseline ALT elevations greater than 3 times the upper limit of normal. Fifteen of the 17 patients treated with DALVANCE and one comparator patient had underlying conditions which could affect liver enzymes, including chronic viral hepatitis, history of alcohol abuse and metabolic syndrome. In addition, one DALVANCE-treated subject in a Phase 1 trial had post-baseline ALT elevations greater than 20 times ULN. ALT elevations were reversible in all subjects with follow-up assessments. No comparator-treated subject with normal baseline transaminases had post-baseline ALT elevation greater than 10 times ULN.

7 DRUG INTERACTIONS

7.1 Drug-Laboratory Test Interactions

Drug-laboratory test interactions have not been reported. DALVANCE at therapeutic concentrations does not artificially prolong prothrombin time (PT) or activated partial thromboplastin time (aPTT).

7.2 Drug-Drug Interactions

No clinical drug-drug interaction studies have been conducted with DALVANCE. There is minimal potential for drug-drug interactions between DALVANCE and cytochrome P450 (CYP450) substrates, inhibitors, or inducers [see *Clinical Pharmacology (12.3)*].

8 USE IN SPECIFIC POPULATIONS

8.1 Pregnancy

Risk Summary

There have been no adequate and well-controlled studies with DALVANCE in pregnant women. DALVANCE should be used during pregnancy only if the potential benefit justifies the potential risk to the fetus.

No treatment-related malformations or embryo-fetal toxicity were observed in pregnant rats or rabbits at clinically relevant exposures of dalbavancin. Treatment of pregnant rats with dalbavancin at 3.5 times the human dose on an exposure basis during early embryonic development and from implantation to the end of lactation resulted in delayed fetal maturation and increased fetal loss, respectively [see *Data*].

The background risk of major birth defects and miscarriage for the indicated population is unknown. However, the background risk in the U.S. general population of major birth defects is 2 to 4% and of miscarriage is 15 to 20% of clinically recognized pregnancies.

Data

Animal Data

No evidence of embryo or fetal toxicity was found in the rat or rabbit at a dose of 15 mg/kg/day (1.2 and 0.7 times the human dose on an exposure basis, respectively). Delayed fetal maturation was observed in the rat at a dose of 45 mg/kg/day (3.5 times the human dose on an exposure basis).

In a rat prenatal and postnatal development study, increased embryo lethality and increased offspring deaths during the first week post-partum were observed at a dose of 45 mg/kg/day (3.5 times the human dose on an exposure basis).

8.2 Lactation

Risk Summary

It is not known whether dalbavancin or its metabolite is excreted in human milk; therefore, caution should be exercised when DALVANCE is administered to a nursing woman.

The developmental and health benefits of breastfeeding should be considered along with the mother's clinical need for DALVANCE and any potential adverse effects on the breastfed child from DALVANCE or from the underlying maternal condition.

Data

Animal Data

Dalbavancin is excreted in the milk of lactating rats.

8.4 Pediatric Use

Safety and efficacy in pediatric patients have not been established.

8.5 Geriatric Use

Of the 2473 patients treated with DALVANCE in Phase 2 and 3 clinical trials, 403 patients (16.3%) were 65 years of age or older. The efficacy and tolerability of DALVANCE were similar to comparator regardless of age. The pharmacokinetics of DALVANCE was not significantly altered with age; therefore, no dosage adjustment is necessary based on age alone.

DALVANCE is substantially excreted by the kidney, and the risk of adverse reactions may be greater in patients with impaired renal function. Because elderly patients are more likely to have decreased renal function, care should be taken in dose selection in this age group.

8.6 Renal Impairment

In patients with renal impairment whose known creatinine clearance is less than 30 mL/min and who are not receiving regularly scheduled hemodialysis, the recommended regimen for DALVANCE is 1125 mg, administered as a single dose, or 750 mg followed one week later by 375 mg. No dosage adjustment is recommended for patients receiving regularly scheduled hemodialysis, and DALVANCE can be administered without regard to the timing of hemodialysis [see *Dosage and Administration (2.2)*, *Clinical Pharmacology (12.3)*].

8.7 Hepatic Impairment

No dosage adjustment of DALVANCE is recommended for patients with mild hepatic impairment (Child-Pugh Class A). Caution should be exercised when prescribing DALVANCE to patients with moderate or severe hepatic impairment (Child-Pugh Class B or C) as no data are available to determine the appropriate dosing in these patients [see *Clinical Pharmacology (12.3)*].

10 OVERDOSAGE

Specific information is not available on the treatment of overdose with DALVANCE, as dose-limiting toxicity has not been observed in clinical studies. In Phase 1 studies, healthy volunteers have been administered cumulative doses of up to 4500 mg over a period of up to 8 weeks, with no signs of toxicity or laboratory results of clinical concern.

Treatment of overdose with DALVANCE should consist of observation and general supportive measures. Although no information is available specifically regarding the use of hemodialysis to treat overdose, in a Phase 1 study in patients with renal impairment less than 6% of the recommended dalbavancin dose was removed [see *Clinical Pharmacology (12.3)*].

11 DESCRIPTION

DALVANCE (dalbavancin) for injection is a lipoglycopeptide synthesized from a fermentation product of *Nonomuraea* species.

Dalbavancin is a mixture of five closely related active homologs (A₀, A₁, B₀, B₁, and B₂); the component B₀ is the major component of dalbavancin. The homologs share the same core structure and differ in the fatty acid side chain of the N-acylaminoglucuronic acid moiety (R₁) structure and/or the presence of an additional methyl group (R₂) on the terminal amino group (shown in the [Figure 1](#) and [Table 3](#) below).

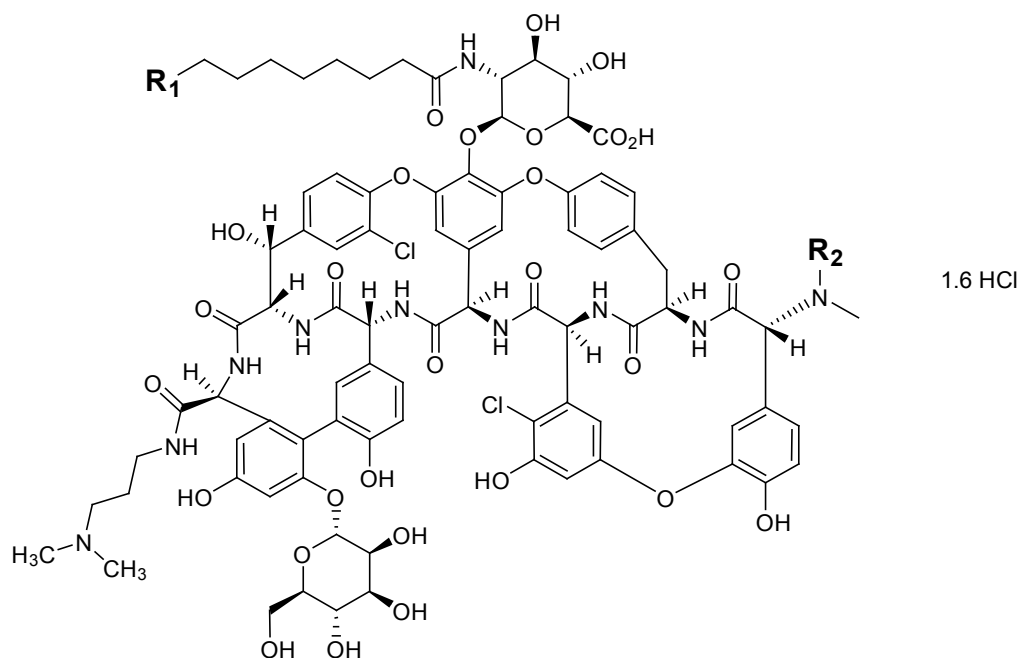


Figure 1. Dalbavancin Structural Formula

Table 3. Substitution Patterns for Dalbavancin API Homologs

Dalbavancin	R ₁	R ₂	Molecular Formula	Molecular Weight*
A ₀	CH(CH ₃) ₂	H	C ₈₇ H ₉₈ N ₁₀ O ₂₈ Cl ₂ · 1.6 HCl	1802.7
A ₁	CH ₂ CH ₂ CH ₃	H	C ₈₇ H ₉₈ N ₁₀ O ₂₈ Cl ₂ · 1.6 HCl	1802.7
B ₀	CH ₂ CH(CH ₃) ₂	H	C ₈₈ H ₁₀₀ N ₁₀ O ₂₈ Cl ₂ · 1.6 HCl	1816.7
B ₁	CH ₂ CH ₂ CH ₂ CH ₃	H	C ₈₈ H ₁₀₀ N ₁₀ O ₂₈ Cl ₂ · 1.6 HCl	1816.7
B ₂	CH ₂ CH(CH ₃) ₂	CH ₃	C ₈₉ H ₁₀₂ N ₁₀ O ₂₈ Cl ₂ · 1.6 HCl	1830.7

*Anhydrous free base

The B₀ INN chemical name is: 5,3,1-dichloro-38-de(methoxycarbonyl)-7-demethyl-19-deoxy-56-O-[2-deoxy-2-[(10-methylundecanoyl)amino]-β-D-glucopyranuronosyl]-38-[[3-(dimethylamino)propyl]carbamoyl]-42-O-α-D-mannopyranosyl-15-N-methyl(ristomycin A aglycone) hydrochloride.

DALVANCE is supplied in clear glass vials as a sterile, lyophilized, preservative-free, white to off-white to pale yellow solid. Each vial contains dalbavancin HCl equivalent to 500 mg of dalbavancin as the free base, plus lactose monohydrate (129 mg) and mannitol (129 mg) as excipients. Sodium hydroxide or hydrochloric acid may be added to adjust the pH at the time of manufacture. The powder is to be reconstituted and further diluted for IV infusion [see *Dosage and Administration* (2.3), *How Supplied/Storage and Handling* (16)].

12 CLINICAL PHARMACOLOGY

12.1 Mechanism of Action

Dalbavancin is an antibacterial drug [see *Microbiology (12.4)*].

12.2 Pharmacodynamics

The antibacterial activity of dalbavancin appears to best correlate with the ratio of area under the concentration-time curve to minimal inhibitory concentration (AUC/MIC) for *Staphylococcus aureus* based on animal models of infection. An exposure-response analysis of a single study in patients with complicated skin and skin structure infections supports the two-dose regimen [see *Dosage and Administration (2.1)*, *Clinical Pharmacology (12.3)*].

Cardiac Electrophysiology: In a randomized, positive- and placebo-controlled, thorough QT/QTc study, 200 healthy subjects received dalbavancin 1000 mg IV, dalbavancin 1500 mg IV, oral moxifloxacin 400 mg, or placebo. Neither dalbavancin 1000 mg nor dalbavancin 1500 mg had any clinically relevant adverse effect on cardiac repolarization.

12.3 Pharmacokinetics

Dalbavancin pharmacokinetic parameters have been characterized in healthy subjects, patients, and specific populations. Pharmacokinetic parameters following administration of single intravenous 1000 mg and 1500 mg doses were as shown in [Table 4](#). The pharmacokinetics of dalbavancin can be described using a three-compartment model.

Table 4. Dalbavancin Pharmacokinetic Parameters in Healthy Subjects

Parameter	Single 1000 mg Dose	Single 1500 mg Dose
C _{max} (mg/L)	287 (13.9) ¹	423 (13.2) ⁴
AUC ₀₋₂₄ (mg•h/L)	3185 (12.8) ¹	4837 (13.7) ⁴
AUC _{0-Day7} (mg•h/L)	11160 (41.1) ²	ND
AUC _{0-inf} (mg•h/L)	23443 (40.9) ²	ND
Terminal t _½ (h)	346 (16.5) ^{2,3}	ND
CL (L/h)	0.0513 (46.8) ²	ND

All values are presented as mean (% coefficient of variation)

¹ Data from 50 healthy subjects.

² Data from 12 healthy subjects.

³ Based upon population pharmacokinetic analyses of data from patients, the effective half-life is approximately 8.5 days (204 hours).

⁴ Data from 49 healthy subjects.

Abbreviation: ND – not determined

In healthy subjects, dalbavancin AUC_{0-24h} and C_{max} both increased proportionally to dose following single IV dalbavancin doses ranging from 140 mg to 1500 mg, indicating linear pharmacokinetics.

The mean plasma concentration-time profile for dalbavancin following the recommended two-dose regimen of 1000 mg followed one week later by 500 mg is shown in Figure 2.

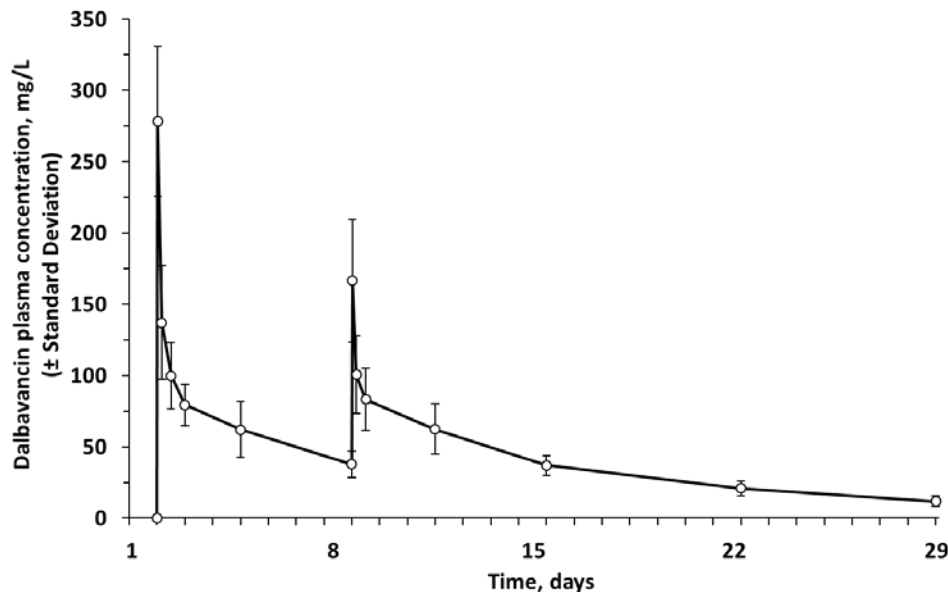


Figure 2. Mean (\pm standard deviation) dalbavancin plasma concentrations versus time in healthy subjects (n=10) following IV administration over 30 minutes of 1000 mg dalbavancin (Day 1) and 500 mg dalbavancin (Day 8).

No apparent accumulation of dalbavancin was observed following multiple IV infusions administered once weekly for up to eight weeks, with 1000 mg on Day 1 followed by up to seven weekly 500 mg doses, in healthy adults with normal renal function.

Distribution: Dalbavancin is reversibly bound to human plasma proteins, primarily to albumin. The plasma protein binding of dalbavancin is approximately 93% and is not altered as a function of drug concentration, renal impairment, or hepatic impairment. The mean concentrations of dalbavancin achieved in skin blister fluid remain above 30 mg/L up to 7 days (approximately 146 hours) post dose, following 1000 mg IV dalbavancin. The mean ratio of the $AUC_{0-144 \text{ hrs}}$ in skin blister fluid/ $AUC_{0-144 \text{ hrs}}$ in plasma is 0.60 (range 0.44 to 0.64).

Metabolism: *In vitro* studies using human microsomal enzymes and hepatocytes indicate that dalbavancin is not a substrate, inhibitor, or inducer of CYP450 isoenzymes. A minor metabolite of dalbavancin (hydroxy-dalbavancin) has been observed in the urine of healthy subjects. Quantifiable concentrations of the hydroxy-dalbavancin metabolite have not been observed in human plasma (lower limit of quantitation = 0.4 $\mu\text{g/mL}$) [see *Drug Interactions (7.2)*].

Excretion: Following administration of a single 1000 mg dose in healthy subjects, 20% of the dose was excreted in feces through 70 days post dose. An average of 33% of the administered dalbavancin dose was excreted in urine as unchanged dalbavancin and approximately 12% of the administered dose was excreted in urine as the metabolite hydroxy-dalbavancin through 42 days post dose.

Specific Populations

Renal Impairment: The pharmacokinetics of dalbavancin were evaluated in 28 subjects with varying degrees of renal impairment and in 15 matched control subjects with normal renal function.

Following a single dose of 500 mg or 1000 mg dalbavancin, the mean plasma clearance (CL_T) was reduced 11%, 35%, and 47% in subjects with mild (CL_{CR} 50 to 79 mL/min), moderate (CL_{CR} 30 to 49 mL/min), and severe (CL_{CR} less than 30 mL/min), renal impairment, respectively, compared to subjects with normal renal function. The clinical significance of the decrease in mean plasma CL_T , and the associated increase in $AUC_{0-\infty}$ noted in these pharmacokinetic studies of dalbavancin in subjects with severe renal impairment has not been established [see *Dosage and Administration (2.2)*, *Use in Specific Populations (8.6)*].

No dosage adjustment is necessary for patients with CL_{CR} greater than 30 mL/min or patients receiving hemodialysis. The recommended regimen for dalbavancin in patients with severe renal impairment who are not receiving regularly scheduled hemodialysis is 1125 mg, administered as a single dose, or 750 mg followed one week later by 375 mg.

Dalbavancin pharmacokinetic parameters in subjects with end-stage renal disease receiving regularly scheduled hemodialysis (three times/week) are similar to those observed in subjects with mild to moderate renal impairment, and less than 6% of an administered dose is removed after three hours of hemodialysis.

Therefore, no dosage adjustment is recommended for patients receiving regularly scheduled hemodialysis, and dalbavancin may be administered without regard to the timing of hemodialysis in such patients [see *Dosage and Administration (2.1)*, *Overdosage (10)*].

Hepatic Impairment: The pharmacokinetics of dalbavancin were evaluated in 17 subjects with mild, moderate, or severe hepatic impairment (Child-Pugh class A, B or C) and compared to those in nine matched healthy subjects with normal hepatic function. The mean $AUC_{0-336 \text{ hrs}}$ was unchanged in subjects with mild hepatic impairment compared to subjects with normal hepatic function; however, the mean $AUC_{0-336 \text{ hrs}}$ decreased 28% and 31% in subjects with moderate and severe hepatic impairment respectively, compared to subjects with normal hepatic function. The clinical significance of the decreased $AUC_{0-336 \text{ hrs}}$ in subjects with moderate and severe hepatic function is unknown.

No dosage adjustment is recommended for patients with mild hepatic impairment. Caution should be exercised when prescribing dalbavancin to patients with moderate or severe hepatic impairment as no data are available to determine the appropriate dosing.

Gender: Clinically significant gender-related differences in dalbavancin pharmacokinetics have not been observed either in healthy subjects or in patients with infections. No dosage adjustment is recommended based on gender.

Geriatric Patients: Clinically significant age-related differences in dalbavancin pharmacokinetics have not been observed in patients with infections. No dosage adjustment is recommended based solely on age.

Pediatric Patients: The pharmacokinetics of dalbavancin in pediatric populations <12 years of age have not been established.

Drug Interactions

Nonclinical studies demonstrated that dalbavancin is not a substrate, inhibitor, or inducer of CYP450 isoenzymes. In a population pharmacokinetic analysis, dalbavancin pharmacokinetics were not affected by co-administration with known CYP450 substrates, inducers or inhibitors, nor by individual medications including acetaminophen, aztreonam, fentanyl, metronidazole, furosemide, proton pump inhibitors (omeprazole, esomeprazole, pantoprazole, lansoprazole), midazolam, and simvastatin.

12.4 Microbiology

Mechanism of Action

Dalbavancin, a semisynthetic lipoglycopeptide, interferes with cell wall synthesis by binding to the D-alanyl-D-alanine terminus of the stem pentapeptide in nascent cell wall peptidoglycan, thus preventing cross-linking. Dalbavancin is bactericidal *in vitro* against *Staphylococcus aureus* and *Streptococcus pyogenes* at concentrations similar to those sustained throughout treatment in humans treated according to the recommended dosage regimen.

Mechanism of Resistance

The development of bacterial isolates resistant to dalbavancin has not been observed, either *in vitro*, in studies using serial passage, or in animal infection experiments.

Interaction with Other Antimicrobials

When tested *in vitro*, dalbavancin demonstrated synergistic interactions with oxacillin and did not demonstrate antagonistic or synergistic interactions with any of the following antibacterial agents of various classes: gentamicin, vancomycin, levofloxacin, clindamycin, quinupristin/dalfopristin, linezolid, aztreonam, rifampin or daptomycin. The clinical significance of these *in vitro* findings is unknown.

Dalbavancin has been shown to be active against the following microorganisms, both *in vitro* and in clinical infections [*see Indications and Usage (1)*].

Gram-positive bacteria

Staphylococcus aureus (including methicillin-resistant isolates)

Streptococcus pyogenes

Streptococcus agalactiae

Streptococcus dysgalactiae

Streptococcus anginosus group (including *S. anginosus*, *S. intermedius*, *S. constellatus*)

Enterococcus faecalis (vancomycin-susceptible isolates only)

The following *in vitro* data are available, but their clinical significance is unknown. In addition, at least 90% of organisms in the following bacteria exhibit an *in vitro* minimum inhibitory concentration (MIC) less than or equal to the dalbavancin susceptible breakpoint of 0.25 mcg/mL. However, the safety and efficacy of dalbavancin in treating clinical infections due to these bacteria have not been established in adequate well-controlled clinical trials.

Gram-positive bacteria

Enterococcus faecium (vancomycin-susceptible isolates only)

Susceptibility Test Methods

When available, the clinical microbiology laboratory should provide the results of *in vitro* susceptibility test results for antimicrobial drug products used in resident hospitals to the physician as periodic reports that describe the susceptibility profile of nosocomial and community-acquired pathogens. These reports should aid the physician in selecting an antibacterial drug for treatment.

Dilution Techniques

Quantitative methods are used to determine minimum inhibitory concentrations (MICs). These MICs provide estimates of the susceptibility of bacteria to antimicrobial compounds. The MICs should be determined using a standardized test method.^{1,2} When determining dalbavancin MICs, polysorbate-80 (P-80), should be added at a final concentration of 0.002% to freshly prepared or frozen microtiter trays. The MIC values should be interpreted according to the criteria provided in Table 5.

Diffusion Techniques

Dalbavancin disks for diffusion susceptibility testing are not available. Disk diffusion is not a reliable method for determining the *in vitro* activity of dalbavancin.

Table 5. Susceptibility Test Interpretive Criteria for Dalbavancin

Pathogen	MIC (mcg/mL) ^a			Zone Diameter (mm)		
	S	I	R	S	I	R
<i>Staphylococcus aureus</i> (including methicillin-resistant isolates)	≤ 0.25	--	--	--	--	--
<i>Streptococcus pyogenes</i> , <i>Streptococcus agalactiae</i> , <i>Streptococcus dysgalactiae</i> , and <i>Streptococcus anginosus</i> group	≤ 0.25	--	--	--	--	--
<i>Enterococcus faecalis</i> (vancomycin-susceptible isolates only)	≤ 0.25	--	--	--	--	--

^a The current absence of data on resistant isolates precludes defining any category other than "Susceptible". Isolates yielding test results other than "Susceptible" should be retested, and if the result is confirmed, the isolate should be submitted to a reference laboratory for additional testing.

A report of "Susceptible" indicates that the antibacterial agent is likely to inhibit growth of the pathogen if the antibacterial compound reaches the concentrations at the infection site necessary to inhibit growth of the pathogen.

Quality Control

Standardized susceptibility test procedures require the use of laboratory controls to monitor and ensure the accuracy and precision of supplies and reagents used in the assay, and the techniques of the individuals performing the test.^{1,2} Standard dalbavancin powder should provide the following range of MIC values noted in Table 6.

Table 6. Acceptable MIC Quality Control Ranges for Dalbavancin

Quality Control Strain	MIC Range (µg/mL)
<i>Staphylococcus aureus</i> ATCC ®29213	0.03-0.12
<i>Streptococcus pneumoniae</i> ATCC ®49619 ^a	0.008-0.03
<i>Enterococcus faecalis</i> ATCC ®29212	0.03-0.12

ATCC® = American Type Culture Collection

^a This organism may be used for validation of susceptibility test results when testing *Streptococcus* species other than *S. pneumoniae*.

13 NONCLINICAL TOXICOLOGY

13.1 Carcinogenesis, Mutagenesis, Impairment of Fertility

Long-term studies in animals to determine the carcinogenic potential of dalbavancin have not been conducted.

Dalbavancin was not genotoxic in a bacterial reverse mutation (Ames) assay, a mammalian HGPRT gene mutation assay, an *in vitro* chromosome aberration assay in Chinese Hamster Ovary cells, or an *in vivo* mouse micronucleus assay.

Impaired fertility in the rat was not observed at a dose of 15 mg/kg/day (1.2 times the human dose on an exposure basis). Reductions in male and female fertility and increased embryo resorptions occurred at a dose of 45 mg/kg/day (3.5 times the human dose on an exposure basis), at which signs of parental toxicity were also observed.

13.2 Animal Toxicology and/or Pharmacology

Increases in serum levels of liver enzymes (ALT, AST), associated with microscopic findings in the liver were noted in toxicology studies in rats and dogs where dalbavancin was administered daily for 28 to 90 days. Hepatocellular necrosis was observed in dogs dosed at ≥ 10 mg/kg/day for longer than 2 months, i.e., at approximately 5 to 7 times the expected human dose on an exposure basis. Histiocytic vacuolation and hepatocyte necrosis were observed in rats dosed daily at 40 and 80 mg/kg/day, respectively, for 4 weeks, (approximately 3 and 6 times the expected human dose on an exposure basis, respectively). In addition, renal toxicity characterized by increases in serum BUN and creatinine and microscopic kidney findings was observed in rats and dogs at doses 5 to 7 times the expected human dose on an exposure basis. The relationship between these findings in the animal toxicology studies after 28 and 90 consecutive days of dosing to the indicated clinical dosing of 2 doses 7 days apart are unclear.

14 CLINICAL STUDIES

Acute Bacterial Skin and Skin Structure Infections:

DALVANCE Two-dose Regimen (1000 mg Day 1; 500 mg Day 8)

Adult patients with ABSSSI were enrolled in two Phase 3, randomized, double-blind, double-dummy clinical trials of similar design (Trial 1 and Trial 2). The Intent-to-Treat (ITT) population included 1,312 randomized patients. Patients were treated for two weeks with either a two-dose regimen of intravenous DALVANCE (1000 mg followed one week later by 500 mg) or intravenous vancomycin (1000 mg or 15 mg/kg every 12 hours, with the option to switch to oral linezolid after 3 days). DALVANCE-treated patients with creatinine clearance of less than 30 mL/min received 750 mg followed one week later by 375 mg. Approximately 5% of patients also received a protocol-specified empiric course of treatment with intravenous aztreonam for coverage of Gram-negative pathogens.

The specific infections in these trials included cellulitis (approximately 50% of patients across treatment groups), major abscess (approximately 30%), and wound infection (approximately 20%). The median lesion area at baseline was 341 cm². In addition to local signs and symptoms of infection, patients were also required to have at least one systemic sign of disease at baseline, defined as temperature 38°C or higher (approximately 85% of patients), white blood cell count greater than 12,000 cells/mm³ (approximately 40%), or 10% or more band forms on white blood cell differential (approximately 23%). Across both trials, 59% of patients were from Eastern Europe and 36% of patients were from North America. Approximately 89% of patients were Caucasian and 58% were males. The mean age was 50 years and the mean body mass index was 29.1 kg/m².

The primary endpoint of these two ABSSSI trials was the clinical response rate where responders were defined as patients who had no increase from baseline in lesion area 48 to 72 hours after initiation of therapy, and had a temperature consistently at or below 37.6° C upon repeated measurement. [Table 7](#) summarizes overall clinical response rates in these two ABSSSI trials using the pre-specified primary efficacy endpoint in the ITT population.

Table 7. Clinical Response Rates in ABSSSI Trials at 48-72 Hours after Initiation of Therapy^{1,2}

	DALVANCE n/N (%)	Vancomycin/Linezolid n/N (%)	Difference (95% CI)³
Trial 1	240/288 (83.3)	233/285 (81.8)	1.5 (-4.6, 7.9)
Trial 2	285/371 (76.8)	288/368 (78.3)	-1.5 (-7.4, 4.6)

¹ There were 7 patients who did not receive treatment and were counted as non-responders: 6 DALVANCE patients (3 in each trial) and one vancomycin/linezolid patient in Trial 2.

² Patients who died or used non-study antibacterial therapy or had missing measurements were classified as non-responders.

³ The 95% Confidence Interval (CI) is computed using the Miettinen and Nurminen approach, stratified by baseline fever status.

A key secondary endpoint in these two ABSSSI trials evaluated the percentage of ITT patients achieving a 20% or greater reduction in lesion area from baseline at 48-72 hours after initiation of therapy. Table 8 summarizes the findings for this endpoint in these two ABSSSI trials.

Table 8. Patients in ABSSSI Trials with Reduction in Lesion Area of 20% or Greater at 48-72 Hours after Initiation of Therapy^{1,2}

	DALVANCE n/N (%)	Vancomycin/Linezolid n/N (%)	Difference (95% CI) ³
Trial 1	259/288 (89.9)	259/285 (90.9)	-1.0 (-5.7, 4.0)
Trial 2	325/371 (87.6)	316/368 (85.9)	1.7 (-3.2, 6.7)

¹ There were 7 patients (as described in Table 7) who did not receive treatment and were counted as non-responders.

² Patients who died or used non-study antibacterial therapy or had missing measurements were classified as non-responders.

³ The 95% CI is computed using the Miettinen and Nurminen approach, stratified by baseline fever status.

Another secondary endpoint in these two ABSSSI trials was the clinical success rate assessed at a follow-up visit occurring between Days 26 to 30. Clinical Success at this visit was defined as having a decrease in lesion size (both length and width measurements), a temperature of 37.6° C or lower, and meeting pre-specified criteria for local signs: purulent discharge and drainage absent or mild and improved from baseline, heat/warmth & fluctuance absent, swelling/induration & tenderness to palpation absent or mild.

Table 9 summarizes clinical success rates at a follow-up visit for the ITT and clinically evaluable population in these two ABSSSI trials. Note that there are insufficient historical data to establish the magnitude of drug effect for antibacterial drugs compared with placebo at the follow-up visits. Therefore, comparisons of DALVANCE to vancomycin/linezolid based on clinical success rates at these visits cannot be utilized to establish non-inferiority.

Table 9. Clinical Success Rates in ABSSSI Trials at Follow-Up (Day 26 to 30)^{1,2}

	DALVANCE n/N (%)	Vancomycin/Linezolid n/N (%)	Difference (95% CI) ³
Trial 1			
ITT	241/288 (83.7%)	251/285 (88.1%)	-4.4% (-10.1, 1.4)
CE	212/226 (93.8%)	220/229 (96.1%)	-2.3% (-6.6, 2.0)
Trial 2			
ITT	327/371 (88.1%)	311/368 (84.5%)	3.6% (-1.3, 8.7)
CE	283/294 (96.3%)	257/272 (94.5%)	1.8% (-1.8, 5.6)

¹ There were 7 patients (as described in Table 7) who did not receive treatment and were counted as failures in the analysis.

² Patients who died, used non-study antibacterial therapy, or had an unplanned surgical intervention 72 hours after the start of therapy were classified as Clinical Failures.

³ The 95% CI is computed using the Miettinen and Nurminen approach, stratified by baseline fever status.

Table 10 shows outcomes in patients with an identified baseline pathogen, using pooled data from Trials 1 and 2 in the microbiological ITT (microITT) population. The outcomes shown in the table are clinical response rates at 48 to 72 hours and clinical success rates at follow-up (Day 26 to 30), as defined above.

Table 10. Outcomes by Baseline Pathogen (Trial 1, 2; MicroITT)¹

Pathogen	Early Clinical Response at 48-72 hours					
	Early Responder ²		≥ 20% reduction in lesion size		Clinical Success at Day 26 to 30	
	DALVANCE n/N (%)	Comparator n/N (%)	DALVANCE n/N (%)	Comparator n/N (%)	DALVANCE n/N (%)	Comparator n/N (%)
<i>Staphylococcus aureus</i>	206/257 (80.2)	219/256 (85.5)	239/257 (93.0)	232/256 (90.6)	217/257 (84.4)	229/256 (89.5)
Methicillin-susceptible	134/167 (80.2)	163/189 (86.2)	156/167 (93.4)	173/189 (91.5)	142/167 (85.0)	171/189 (90.5)
Methicillin-resistant	72/90 (80.0)	56/67 (83.6)	83/90 (92.2)	59/67 (88.1)	75/90 (83.3)	57/67 (85.1)
<i>Streptococcus agalactiae</i>	6/12 (50.0)	11/14 (78.6)	10/12 (83.3)	10/14 (71.4)	10/12 (83.3)	11/14 (78.6)
<i>Streptococcus pyogenes</i>	28/37 (75.7)	24/36 (66.7)	32/37 (86.5)	27/36 (75.0)	33/37 (89.2)	32/36 (88.9)
<i>Streptococcus anginosus</i> group	18/22 (81.8)	23/25 (92.0)	21/22 (95.5)	25/25 (100.0)	21/22 (95.5)	23/25 (92.0)
<i>Enterococcus faecalis</i>	8/12 (66.7)	10/13 (76.9)	12/12 (100.0)	12/13 (92.3)	12/12 (100.0)	11/13 (84.6)

All DALVANCE dosing regimens in Trials 1 and 2 consisted of two doses.

¹ There were 2 patients in the DALVANCE arm with methicillin-susceptible *S. aureus* at baseline who did not receive treatment and were counted as non-responders/failures.

² Early Responders are patients who had no increase from baseline in lesion area 48 to 72 hours after initiation of therapy, and had a temperature consistently at or below 37.6° C upon repeated measurement.

DALVANCE 1500 mg Single Dose Regimen

Adult patients with ABSSSI were enrolled in a Phase 3, double-blind, clinical trial. The ITT population included 698 patients who were randomized to DALVANCE treatment with either a single 1500 mg dose or a two-dose regimen of 1000 mg followed one week later by 500 mg (Trial 3). Patients with creatinine clearance less than 30 mL/min had their dose adjusted (Section 2.2). Approximately 5% of patients also received a protocol-specified empiric course of treatment with intravenous aztreonam for coverage of Gram-negative pathogens. The specific infections and other patient characteristics in this trial were similar to those described above for previous ABSSSI trials.

The primary endpoint in this ABSSSI trial was the clinical response rate where responders were defined as patients who had at least a 20% decrease from baseline in lesion area 48 to 72 hours after randomization without receiving any rescue antibacterial therapy. The secondary endpoint was the clinical success rate at a follow-up visit occurring between Days 26 and 30, with clinical success defined as having at least a 90% decrease from baseline in lesion size, a temperature of 37.6° C or lower, and meeting pre-specified criteria for local signs: purulent discharge and drainage absent or mild and improved from baseline (for patients with wound infections), heat/warmth and fluctuance absent, swelling/induration and tenderness to palpation absent or mild. Table 11 summarizes results for these two endpoints in the ITT population. Note that there are insufficient historical data to establish the magnitude of drug effect for antibacterial drugs compared with placebo at the follow-up visit. Therefore, comparisons between treatment groups based on clinical success rates at this visit cannot be utilized to establish non-inferiority.

Table 11. Primary and Secondary Efficacy Results in ABSSSI Patients (Trial 3) ^{1,2}

	DALVANCE, n/N (%)		Difference (95% CI) ³
	Single Dose (1500 mg)	Two doses (1000 mg Day 1/500 mg Day 8)	
Clinical Responders at 48-72 Hours (ITT)	284/349 (81.4)	294/349 (84.2)	-2.9 (-8.5, 2.8)
Clinical Success at Day 26-30 (ITT)	295/349 (84.5)	297/349 (85.1)	-0.6 (-6.0, 4.8)
Clinical Success at Day 26-30 (CE)	250/271 (92.3)	247/267 (92.5)	-0.3 (-4.9, 4.4)

¹ There were 3 patients in the two-dose group who did not receive treatment and were counted as non-responders.

² Patients who died or used non-study antibacterial therapy or had missing measurements were classified as non-responders.

³ The 95% Confidence Interval (CI) is computed using the Miettinen and Nurminen approach.
Abbreviations: ITT-intent to treat; CE-clinically evaluable

Table 12 shows outcomes in patients with an identified baseline pathogen from Trial 3 in the microbiological ITT (microITT) population. The outcomes shown in the table are clinical response rates at 48 to 72 hours and clinical success rates at follow-up (Day 26 to 30), as defined above.

Table 12. Outcomes by Baseline Pathogen (Trial 3; MicroITT)

Pathogen	Early Clinical Response at 48-72 hours			
	≥ 20% reduction in lesion size		Clinical Success at Day 26 to 30	
	Single dose (1500 mg) n/N (%)	Two doses (1000 mg Day 1/ 500 mg Day 8) n/N (%)	Single dose (1500 mg) n/N (%)	Two doses (1000 mg Day 1/ 500 mg Day 8) n/N (%)
<i>Staphylococcus aureus</i>	123/139 (88.5)	133/156 (85.3)	124/139 (89.2)	140/156 (89.7)
Methicillin-susceptible	92/103 (89.3)	89/96 (89.6)	93/103 (90.3)	86/96 (89.6)
Methicillin-resistant	31/36 (86.1)	48/61 (78.7)	31/36 (86.1)	55/61 (90.2)
<i>Streptococcus agalactiae</i>	6/6(100.0)	4/6 (66.7)	5/6 (83.3)	5/6 (83.3)
<i>Streptococcus anginosus</i> group	31/33 (93.9)	19/19 (100.0)	29/33 (87.9)	17/19 (89.5)
<i>Streptococcus pyogenes</i>	14/14 (100.0)	18/22 (81.8)	13/14 (92.9)	19/22 (86.4)
<i>Enterococcus faecalis</i>	4/4 (100.0)	8/10 (80.0)	4/4 (100.0)	9/10 (90.0)

In Trials 1, 2, and 3, all patients had blood cultures obtained at baseline. A total of 40 ABSSSI patients who received DALVANCE had bacteremia at baseline caused by one or more of the following bacteria: 26 *S. aureus* (21 MSSA and 5 MRSA), 6 *S. agalactiae*, 7 *S. pyogenes*, 2 *S. anginosus* group, and 1 *E. faecalis*. In patients who received DALVANCE, a total of 34/40 (85%) were clinical responders at 48-72 hours and 32/40 (80%) were clinical successes at Day 26 to 30.

15 REFERENCES

1. Clinical and Laboratory Standards Institute (CLSI). Methods for Dilution Antibiotic Susceptibility Tests for Bacteria That Grow Aerobically; Approved Standard—Tenth Edition. CLSI document M07-A10. Clinical and Laboratory Standards Institute, 950 West Valley Road, Suite 2500, Wayne, Pennsylvania 19087, USA, 2015.
2. CLSI. Performance Standards for Antimicrobial Susceptibility Testing; Twenty-Fifth Informational Supplement. CLSI document M100-S25 Clinical and Laboratory Standards Institute, 950 West Valley Road, Suite 2500, Wayne, Pennsylvania 19087, USA, 2015.

16 HOW SUPPLIED/STORAGE AND HANDLING

DALVANCE (dalbavancin) for injection is supplied in the following packaging configuration:

500 mg/vial: package of 1 (NDC 57970-100-01)

Unreconstituted DALVANCE (dalbavancin) for injection should be stored at 25°C (77°F); excursions permitted to 15 to 30°C (59 to 86°F) [see USP Controlled Room Temperature].

17 PATIENT COUNSELING INFORMATION

Patients should be advised that allergic reactions, including serious allergic reactions, could occur, and that serious allergic reactions require immediate treatment. Patients should inform their healthcare provider about any previous hypersensitivity reactions to DALVANCE, or other glycopeptides.

Patients should be counseled that antibacterial drugs including DALVANCE should only be used to treat bacterial infections. They do not treat viral infections (e.g., the common cold). When DALVANCE is prescribed to treat a bacterial infection, patients should be told that although it is common to feel better early in the course of therapy, the medication should be taken exactly as directed. Skipping doses or not completing the full course of therapy may (1) decrease the effectiveness of treatment, and (2) increase the likelihood that bacteria will develop resistance and will not be treatable by DALVANCE and other antibacterial drugs in the future.

Patients should be advised that diarrhea is a common problem caused by antibacterial drugs and usually resolves when the drug is discontinued. Sometimes, frequent watery or bloody diarrhea may occur and may be a sign of a more serious intestinal infection. If severe watery or bloody diarrhea develops, patients should contact their healthcare provider.

**This label may not be the latest approved by FDA.
For current labeling information, please visit <https://www.fda.gov/drugsatfda>**

Manufactured for: Durata Therapeutics U.S. Limited
Parsippany, NJ 07054

US Patent Numbers: Available online at <http://www.duratatherapeutics.com/products/product-patents>

DALVANCE is a registered trademark of Durata Therapeutics Holding C.V.