



BIONPHARMA			
Labeling Format Information:			
Fonts: Helvetica Condensed Bold, Helvetica Condensed, Helvetica Condensed Bold Oblique			
<b>Drug Facts:</b>	8pt	<b>Leading:</b>	6.5pt
<b>Header:</b>	7pt	<b>Bullets:</b>	5pt
<b>Subheader:</b>	6pt	<b>Barlines:</b>	7pt
<b>Body Text:</b>	6pt	<b>Hairlines:</b>	.5pt
<b>Drug Facts (continued):</b>	7pt		
Horizontal Scale: 100%		Average Kerning: 0%	

**Drug Facts (continued)**

**Do not use**

- if you have ever had an allergic reaction to any other pain reliever/fever reducer ● right before or after heart surgery

**Ask a doctor before use if**

- stomach bleeding warning applies to you ● you have a history of stomach problems, such as heartburn
- you have high blood pressure, heart disease, liver cirrhosis, kidney disease, asthma, or had a stroke ● you are taking a diuretic ● you have problems or serious side effects from taking pain relievers or fever reducers

**Ask a doctor or pharmacist before use if you are**

- under a doctor's care for any serious condition ● taking aspirin for heart attack or stroke, because naproxen may decrease this benefit of aspirin ● taking any other drug

**When using this product**

- take with food or milk if stomach upset occurs

**Stop use and ask a doctor if**

- you experience any of the following signs of stomach bleeding: ● feel faint ● vomit blood ● have bloody or black stools ● have stomach pain that does not get better ● you have symptoms of heart problems or stroke: ● chest pain ● trouble breathing ● weakness in one part or side of body ● slurred speech ● leg swelling
- pain gets worse or lasts more than 10 days
- fever gets worse or lasts more than 3 days
- redness or swelling is present in the painful area
- any new symptoms appear
- you have difficulty swallowing
- it feels like the capsule is stuck in your throat

**Drug Facts (continued)**

**If pregnant or breast-feeding**, ask a health professional before use. It is especially important not to use naproxen sodium during the last 3 months of pregnancy unless definitely directed to do so by a doctor because it may cause problems in the unborn child or complications during delivery. **Keep out of reach of children.** In case of overdose, get medical help or contact a Poison Control Center right away.

**Directions** ● do not take more than directed ● the smallest effective dose should be used ● drink a full glass of water with each dose ● if taken with food, this product may take longer to work

adults and children 12 years and older:

- take 1 capsule every 8 to 12 hours while symptoms last
- for the first dose you may take 2 capsules within the first hour
- do not exceed 2 capsules in any 8- to 12-hour period
- do not exceed 3 capsules in a 24-hour period

children under 12 years: ● ask a doctor

**Other information** ● each capsule contains: sodium 20 mg ● store at 20-25°C (68-77°F) avoid high humidity and excessive heat above 40°C (104°F). ● Protect from light. ● read all directions and warnings before use. Keep carton.

**Inactive ingredients** FD&C blue #1, gelatin, glycerin, lactic acid, mannitol, pharmaceutical ink, polyethylene glycol, povidone, propylene glycol, purified water, sorbitan, sorbitol

**Questions or comments?**  
1-888-235-2466 (Mon - Fri 9AM - 5PM EST)

**Drug Facts**

**Active ingredient (in each capsule)** Naproxen sodium 220 mg (naproxen 200 mg (NSAID)) ... Pain reliever/fever reducer \*nonsteroidal anti-inflammatory drug

**Purposes**

- temporarily reduces fever

**Uses**

- temporarily relieves minor aches and pains due to: ● minor pain of arthritis ● muscular aches ● backache ● menstrual cramps ● headache ● toothache ● the common cold ● temporarily reduces fever

**Warnings**

**Allergy alert:** Naproxen sodium may cause a severe allergic reaction, especially in people allergic to aspirin. Symptoms may include: ● hives ● facial swelling ● asthma (wheezing) ● shock ● skin reddening ● rash ● blisters If an allergic reaction occurs, stop use and seek medical help right away.

**Stomach bleeding warning:** This product contains an NSAID, which may cause severe stomach bleeding. The chance is higher if you: ● are age 60 or older ● have had stomach ulcers or bleeding problems ● take a blood thinning (anticoagulant) or steroid drug ● take other drugs containing prescription or nonprescription NSAIDs (aspirin, ibuprofen, naproxen, or others) ● have 3 or more alcoholic drinks every day while using this product ● take more or for a longer time than directed

**Heart attack and stroke warning:** NSAIDs, except aspirin, increase the risk of heart attack, heart failure, and stroke. These can be fatal. The risk is higher if you use more than directed or for longer than directed.

20 CAPSULES



Actual Size

\*\*\*This product is not manufactured or distributed by the owners of ALEVE® Liquid Gels.

Manufactured for:  
**BIONPHARMA**  
600 Alexander Road,  
Princeton, NJ 08540



3 89452 17911 6

Lot No: \_\_\_\_\_  
Exp. Date: \_\_\_\_\_

L0000000  
R0220

BIONPHARMA			
Labeling Format Information:			
Fonts: Helvetica Condensed Bold, Helvetica Condensed, Helvetica Condensed Bold Oblique			
<b>Drug Facts:</b>	8pt	<b>Leading:</b>	6.5pt
<b>Header:</b>	7pt	<b>Bullets:</b>	5pt
<b>Subheader:</b>	6pt	<b>Barlines:</b>	7pt
<b>Body Text:</b>	6pt	<b>Hairlines:</b>	.5pt
<b>Drug Facts (continued):</b>	7pt		
Horizontal Scale: 100%		Average Kerning: 0%	

Reference ID: 4601010

**Drug Facts (continued)**

**Do not use**

- if you have ever had an allergic reaction to any other pain reliever/fever reducer
- right before or after heart surgery

**Ask a doctor before use**

- stomach bleeding warning applies to you
- you have a history of stomach problems, such as heartburn
- you have high blood pressure, heart disease, liver cirrhosis, kidney disease, asthma, or had a stroke
- you are taking a diuretic
- you have problems or serious side effects from taking pain relievers or fever reducers

**Ask a doctor or pharmacist before use if you are**

- under a doctor's care for any serious condition
- taking aspirin for heart attack or stroke, because naproxen may decrease this benefit of aspirin
- taking any other drug

**When using this product**

- take with food or milk. If stomach upset occurs

**Stop use and ask a doctor if**

- you experience any of the following signs of stomach bleeding:
  - stool faint
  - vomit blood
- have trouble breathing
- have stomach pain that does not get better
- have symptoms of heart problems or stroke:
  - chest pain
  - trouble breathing
- weakness in one part or side of body
- slurred speech
- eye swelling
- pain gets worse or lasts more than 10 days
- fever gets worse or lasts more than 3 days
- redness or swelling is present in the painful area
- any new symptoms appear
- you have difficulty swallowing
- it feels like the capsule is stuck in your throat

**Drug Facts (continued)**

**Pregnant or breast feeding**, ask a health professional before use. It is especially important not to use naproxen sodium during the last 3 months of pregnancy unless definitely directed to do so by a doctor because it may cause problems in the unborn child or complications during delivery.

**Keep out of reach of children.** In case of overdose, get medical help or contact a Poison Control Center right away.

**Directions**

- **do not take more than directed**
- **the smallest effective dose should be used**
- drink a full glass of water with each dose
- if taken with food, this product may take longer to work

**Adults and children 17 years and older:**

- take 1 capsule every 8 to 12 hours while symptoms last
- for the first dose you may take 2 capsules within the first hour
- do not exceed 2 capsules in any 8- to 12-hour period
- do not exceed 3 capsules in a 24-hour period

**Children under 17 years:** ● ask a doctor

**Other information**

- each capsule contains sodium 20 mg
- store at 20-25°C (68-77°F) avoid high humidity and excessive heat above 40°C (104°F)
- Protect from light
- read all directions and warnings before use. Keep carton.

**Inactive ingredients**

F53C Blue #1, gelatin, glycerin, lactic acid, mannitol, pharmaceutical ink, polyethylene glycol, povidone, propylene glycol, purified water, sorbitan, sorbitol

**Questions or comments?**  
1 888 235 2466 (Mon-Fri 9AM-5PM EST)

**Naproxen Sodium Capsules, 220 mg (NSAID)**

Pain Reliever/Fever Reducer

Do not use if pregnant, breastfeeding, or taking aspirin

**Naproxen Sodium Capsules, 220 mg (NSAID)**

Pain Reliever/Fever Reducer

NDC 69432-179-13

**Strength to last 12 hours**

30 CAPSULES

Avalon Size

**Drug Facts**

**Active ingredient (in each capsule)** Naproxen sodium 220 mg (naproxen 200 mg (NSAID)\*). \*Pain reliever/fever reducer/nonsteroidal anti-inflammatory drug

**Purposes**

- temporarily relieves minor aches and pains due to:
  - minor pain of arthritis
  - menstrual cramps
  - headache
  - toothache
  - the common cold
  - temporarily reduces fever

**Warnings**

**Allergy alert:** Naproxen sodium may cause a severe allergic reaction, especially in people allergic to aspirin. Symptoms may include:

- hives
- facial swelling
- shock
- skin redness
- rash
- blisters

If an allergic reaction occurs, stop use and seek medical help right away.


**Stomach bleeding warning:** This product contains an NSAID, which may cause severe stomach bleeding. The chance is higher if you:

- are age 60 or older
- have had stomach ulcers or bleeding problems
- take a blood thinner (anticoagulant) or steroid drug
- take other drugs containing prescription or nonprescription NSAIDs (aspirin, ibuprofen, naproxen, or others)
- have 3 or more alcoholic drinks every day while using this product

**Heart attack and stroke warning:** NSAIDs, except aspirin, increase the risk of heart attack, heart failure, and stroke. These can be fatal. The risk is higher if you use more than directed or for longer than directed.

L000000  
R0220

Manufactured for:  
**BIONPHARMA**  
600 Haverfield Road,  
Princeton, NJ 08540



Lot No:  
Exp. Date:

BIONPHARMA			
Labeling Format Information:			
Fonts: Helvetica Condensed Bold, Helvetica Condensed, Helvetica Condensed Bold Oblique			
<b>Drug Facts:</b>	8pt	<b>Leading:</b>	7.2pt
<b>Header:</b>	7pt	<b>Bullets:</b>	5pt
<b>Subheader:</b>	6pt	<b>Barlines:</b>	.6pt
<b>Body Text:</b>	6pt	<b>Hairlines:</b>	.2pt
<b>Drug Facts (continued):</b>	7pt		
Horizontal Scale: 100%		Average Kerning: 0%	

**Drug Facts (continued)**

**Do not use**

- if you have ever had an allergic reaction to any other pain reliever/fever reducer
- right before or after heart surgery

**Ask a doctor before use**

- stomach bleeding warning applies to you
- you have a history of stomach problems, such as heartburn
- you have high blood pressure, heart disease, liver cirrhosis, kidney disease, asthma, or had a stroke
- you are taking a diuretic
- you have problems or serious side effects from taking pain relievers or fever reducers

**Ask a doctor or pharmacist before use if you are**

- under a doctor's care for any serious condition
- taking aspirin for heart attack or stroke, because naproxen may decrease this benefit of aspirin
- taking any other drug

**When using this product**

- take with food or milk. If stomach upset occurs

**Stop use and ask a doctor if**

- you experience any of the following signs of stomach bleeding:
  - stool that is black or dark red
  - vomiting blood
  - have a bloody or black stool
- have stomach pain that does not get better
- chest pain or trouble breathing
- weakness in one part or side of body
- slurred speech
- eg sawe ling
- pain gets worse or lasts more than 0 days
- fever gets worse or lasts more than 3 days
- redness or swelling is present in the painful area
- any new symptoms appear
- you have dizziness or lightheadedness
- it feels like the capsule is stuck in your throat

**Drug Facts (continued)**

**Pregnant or breast feeding**, ask a health professional before use. It is especially important not to use naproxen sodium during the last 3 months of pregnancy unless definitely directed to do so by a doctor because it may cause problems in the unborn child or complications during delivery.

**Keep out of reach of children.** In case of overdose, get medical help or contact a Poison Control Center right away.

**Directions**

- do not take more than directed
- the smallest effective dose should be used
- drink a full glass of water with each dose
- if taken with food, this product may take longer to work

**Adults and children 17 years and older:**

- take 1 capsule every 8 to 12 hours while symptoms last
- for the first dose you may take 2 capsules within the first hour
- do not exceed 2 capsules in any 8- to 12-hour period
- do not exceed 3 capsules in a 24-hour period

**Children 12 to 17 years:** ask a doctor

**Children under 12 years:** ask a doctor

**Other information**

- each capsule contains sodium 20 mg
- store at 20-25°C (68-77°F) avoid high humidity and excessive heat above 40°C (104°F)
- Protect from light
- read all directions and warnings before use. Keep carton.

**Inactive ingredients**

F53C Blue #1, gelatin, glycerin, lactic acid, mannitol, pharmaceutical ink, polyethylene glycol, povidone, propylene glycol, purified water, sorbitan, sorbitol

**Questions or comments?**  
1 888 235 2468 (Mon - Fri 9AM - 5PM EST)

This product is not manufactured or distributed by the owners of ALDIP® Logo © 2011

**Naproxen Sodium Capsules, 220 mg (NSAID)**  
Pain Reliever/Fever Reducer

**Naproxen Sodium Capsules, 220 mg (NSAID)**  
Pain Reliever/Fever Reducer

**Strength to last 12 hours**

**30 CAPSULES**

Ardent Site

Compare to the active ingredient of ALDIP® Liquid Gels ...

NDC 6782-179-13

Manufactured for:  
**BIONPHARMA**  
600 Executive Road,  
Princeton, NJ 08540



Lot No:  
Exp. Date:

BIONPHARMA			
Labeling Format Information:			
Fonts: Helvetica Condensed Bold, Helvetica Condensed, Helvetica Condensed Bold Oblique			
<b>Drug Facts:</b>	8pt	<b>Leading:</b>	7.2pt
<b>Header:</b>	7pt	<b>Bullets:</b>	5pt
<b>Subheader:</b>	6pt	<b>Barlines:</b>	.6pt
<b>Body Text:</b>	6pt	<b>Hairlines:</b>	.2pt
<b>Drug Facts (continued):</b>	7pt		
Horizontal Scale: 100%		Average Kerning: 0%	

**Drug Facts (continued)**

**Do not use**

- if you have ever had an allergic reaction to any other pain re liever/fever reducer
- right before or after heart surgery

**Ask a doctor before use**

- stomach bleeding warning applies to you
- you have a history of stomach problems, such as heartburn
- you have high blood pressure, heart disease, liver cirrhosis, kidney disease, asthma, or had a stroke
- you are taking a diuretic
- you have problems or serious side effects from taking pain relievers or fever reducers

**Ask a doctor or pharmacist before use** if you are

- under a doctor's care for any serious condition
- taking aspirin for heart a lack or stroke, because naproxen may decrease this benefit of aspirin
- taking any other drug

**When using this product**

- take with food or milk. If stomach upset occurs

**Stop use and ask a doctor if**

- you experience any of the following signs of stomach bleeding:
  - stool that is black or dark red
  - vomiting blood
  - have a bloody or black stool
- have stomach pain that does not get better
- you have symptoms of heart problems or stroke:
  - chest pain
  - trouble breathing
- weakness in one part or side of body
- slurred speech
- eg sawe ling
- pain gets worse or lasts more than 0 days
- fever gets worse or lasts more than 3 days
- redness or swe ling is present in the painful area
- any new symptoms appear
- you have a flica by sawe ling
- it feels like the capsule is stuck in your throat

**Drug Facts (continued)**

**Pregnant or breast feeding**, ask a health professional before use. It is especially important not to use naproxen sodium during the last 3 months of pregnancy unless definitely directed to do so by a doctor because it may cause problems in the unborn child or complications during delivery.

**Keep out of reach of children.** In case of overdose, get medical help or contact a Poison Control Center right away.

**Directions**

- do not take more than directed
- he sma lest effective dose should be used
- drink a full glass of water with each dose
- if taken with food, this product may take longer to work

**Adults and children 2 years and older:**

- take 1 capsule every 8 to 2 hours while e symptoms last
- for the first dose you may take 2 capsules within the first hour
- do not exceed 2 capsules in any 8- to 12-hour period
- do not exceed 3 capsules in a 24-hour period

**Children under 2 years:** ask a doctor

**Other information**

- each capsule contains: sodium 20 mg
- store at 20-25°C (68-77°F) avoid high humidity and excessive heat above 40°C (104°F)
- Protect from light
- read all directions and warnings before use. Keep carton.

**Inactive ingredients**

F53C base #1: gelatin, glycerin, lactic acid, mannitol, pharmaceutical ink, polyethylene glycol, povidone, propylene glycol, purified water, sorbitan, sorbitol

**Questions or comments?**  
**1 888 235 2466 (Mon-Fri 9AM-5PM EST)**

**Naproxen Sodium Capsules, 220 mg (NSAID)**

Pain Reliever/Fever Reducer

Strength to last 12 hours

40 CAPSULES

Avalon Size

**Naproxen Sodium Capsules, 220 mg (NSAID)**

Pain Reliever/Fever Reducer

Strength to last 12 hours

40 CAPSULES

Avalon Size

**Drug Facts**

**Active ingredient (in each capsule)** Naproxen sodium 220 mg (naproxen 200 mg (NSAID)\*). \*Pain re liever/fever reducer/ nonsteroidal anti-inflammatory drug

**Purposes**

- temporarily relieves minor aches and pains due to:
  - minor pain of arthritis
  - muscular aches
  - backache
  - menstrual cramps
  - headache
  - toothache
  - the common co d
  - temporarily reduces fever

**Warnings**

**Allergy alert:** Naproxen sodium may cause a severe allergic reaction, especially in people allergic to aspirin. Symptoms may include:

- hives
- facial swe ling
- swelling (wheezing)
- shock
- skin redness/itching
- rash
- blisters

If an allergic reaction occurs, stop use and seek medical help right away.

**Stomach bleeding warning:** This product contains an NSAID, which may cause severe stomach bleeding. The chance is higher if you:


- are age 60 or older
- have had stomach ulcers or bleeding problems
- take a blood thinning (anticoagulant) or steroid drug
- take other drugs containing prescription or nonprescription NSAIDs (aspirin, ibuprofen, naproxen, or others)
- have 3 or more alcoholic drinks every day while using this product

**Heart attack and stroke warning:** NSAIDs, except aspirin, increase the risk of heart a lack, heart fai ure, and stroke. These can be fatal. The risk is higher if you use more than directed or for longer than directed.

Manufactured for:

**BIONPHARMA**

600 Haverfield Road,  
 Princeton, NJ 08540



Lot No:  
Exp. Date:

BIONPHARMA			
Labeling Format Information:			
Fonts: Helvetica Condensed Bold, Helvetica Condensed, Helvetica Condensed Bold Oblique			
<b>Drug Facts:</b>	8pt	<b>Leading:</b>	7.2pt
<b>Header:</b>	7pt	<b>Bullets:</b>	5pt
<b>Subheader:</b>	6pt	<b>Barlines:</b>	.6pt
<b>Body Text:</b>	6pt	<b>Hairlines:</b>	.2pt
<b>Drug Facts (continued):</b>	7pt		
Horizontal Scale: 100%		Average Kerning: 0%	

Reference ID: 4601010

**Drug Facts (continued)**

**Do not use**

- if you have ever had an allergic reaction to any other pain re liever/fever reducer
- right before or after heart surgery

**Ask a doctor before use**

- stomach bleeding warning applies to you
- you have a history of stomach problems, such as heartburn
- you have high blood pressure, heart disease, liver cirrhosis, kidney disease, asthma, or had a stroke
- you are taking a diuretic
- you have problems or serious side effects from taking pain relievers or fever reducers

**Ask a doctor or pharmacist before use if you are**

- under a doctor's care for any serious condition
- taking aspirin for heart a lack or stroke, because naproxen may decrease this benefit of aspirin
- taking any other drug

**When using this product**

- take with food or milk. If stomach upset occurs

**Stop use and ask a doctor if**

- you experience any of the following signs of stomach bleeding:
  - stool that is black or dark red
  - vomiting blood
  - have a bloody or black stool
- have stomach pain that does not get better
- chest pain or trouble breathing
- weakness in one part or side of body
- slurred speech
- eg sawe ling
- pain gets worse or lasts more than 0 days
- fever gets worse or lasts more than 3 days
- redness or sw ling is present in the painful area
- any new symptoms appear
- you have a flica by sawe ling
- it feels like the capsule is stuck in your throat

**Drug Facts (continued)**

**Pregnant or breast feeding.** ask a health professional before use. It is especially important not to use naproxen sodium during the last 3 months of pregnancy unless definitely directed to do so by a doctor because it may cause problems in the unborn child or complications during delivery. **Keep out of reach of children.** In case of overdose, get medical help or contact a Poison Control Center right away.

**Directions**

- do not take more than directed
- he sma lest effective dose should be used
- drink a full glass of water with each dose
- if taken with food, this product may take longer to work

**Adults and children 17 years and older:**

- take 1 capsule every 8 to 12 hours while symptoms last
- for the first dose you may take 2 capsules within the first hour
- do not exceed 2 capsules in any 8- to 12-hour period
- do not exceed 3 capsules in a 24-hour period

**Children under 17 years:** ask a doctor

**Other information**

- each capsule contains sodium 20 mg
- store at 20-25°C (68-77°F) avoid high humidity and excessive heat above 40°C (104°F)
- Protect from light
- read all directions and warnings before use. Keep carton.

**Inactive ingredients**

F53C Blue #1, gelatin, glycerin, lactic acid, mannitol, pharmaceutical ink, polyethylene glycol, povidone, propylene glycol, purified water, sorbitan, sorbitol

**Questions or comments?**  
**1 888 235 2468 (Mon - Fri 9AM - 5PM EST)**

© 2011 This product is not manufactured or distributed by the owners of ALDI® Logo ®

**Drug Facts**

**Active ingredient (in each capsule)** Naproxen sodium 220 mg

**Purposes** (naproxen 200 mg (NSAD)\* ..... Pain re liever/fever reducer \*nonsteroidal anti-inflammatory drug)

**Uses**

- temporarily relieves minor aches and pains due to:
  - minor pain of arthritis
  - muscular aches
  - backache
  - menstrual cramps
  - headache
  - toothache
  - the common co d
  - temporarily reduces fever

**Warnings**

**Allergy alert:** Naproxen sodium may cause a severe allergic reaction, especially in people allergic to aspirin. Symptoms may include:

- hives
- facial swelling
- swelling (wheezing)
- shock
- skin redness/itching
- rash
- blisters

If an allergic reaction occurs, stop use and seek medical help right away.

**Stomach bleeding warning:** This product contains an NSAID, which may cause severe stomach bleeding. The chance is higher if you:

- are age 60 or older
- have had stomach ulcers or bleeding problems
- take a blood thinning (anticoagulant) or steroid drug
- take other drugs containing prescription or nonprescription NSAIDs (aspirin, ibuprofen, naproxen, or others)
- have 3 or more alcoholic drinks every day while using this product

**Heart attack and stroke warning:** NSAIDs, except aspirin, increase the risk of heart a lack, heart fai ure, and stroke. These can be fatal. The risk is higher if you use more than directed or for longer than directed.

**40 CAPSULES**

Aldi Size

Compare to the active ingredient of ALDI® Liquid Gels ...

Strength to last 12 hours

Naproxen Sodium Capsules, 220 mg (NSAID)  
 Pain Reliever/Fever Reducer

Naproxen Sodium Capsules, 220 mg (NSAID)  
 Pain Reliever/Fever Reducer

Do not use if pregnant, breastfeeding, or nursing.

L000000  
R0220

Manufactured for:  
**BIONPHARMA**  
 600 Haverfield Road,  
 Princeton, NJ 08540



6 89452 17915 4

Lot No:  
Exp. Date:

BIONPHARMA			
Labeling Format Information:			
Fonts: Helvetica Condensed Bold, Helvetica Condensed, Helvetica Condensed Bold Oblique			
<b>Drug Facts:</b>	8pt	<b>Leading:</b>	7.2pt
<b>Header:</b>	7pt	<b>Bullets:</b>	5pt
<b>Subheader:</b>	6pt	<b>Barlines:</b>	.6pt
<b>Body Text:</b>	6pt	<b>Hairlines:</b>	.2pt
<b>Drug Facts (continued):</b>	7pt		
Horizontal Scale: 100%		Average Kerning: 0%	

Reference ID: 4601010

**Drug Facts (continued)**

**Do not use**

- if you have ever had an allergic reaction to any other pain reliever/fever reducer
- right before or after heart surgery

**Ask a doctor before use**

- stomach bleeding warning applies to you
- you have a history of stomach problems, such as heartburn
- you have high blood pressure, heart disease, liver cirrhosis, kidney disease, asthma, or had a stroke
- you are taking a diuretic
- you have problems or serious side effects from taking pain relievers or fever reducers

**Ask a doctor or pharmacist before use if you are**

- under a doctor's care for any serious condition
- taking aspirin for heart attack or stroke, because naproxen may decrease this benefit of aspirin
- taking any other drug

**When using this product**

- take with food or milk. If stomach upset occurs

**Stop use and ask a doctor if**

- you experience any of the following signs of stomach bleeding:
  - stomach pain that does not get better
  - black or bloody stools
  - vomiting blood
  - have blood in your stool
- you have symptoms of heart problems or stroke:
  - chest pain
  - trouble breathing
  - weakness in one part or side of body
  - slurred speech
  - eg saw ling
- pain gets worse or lasts more than 10 days
- fever gets worse or lasts more than 3 days
- redness or swelling is present in the painful area
- any new symptoms appear
- you have dizziness or lightheadedness
- it feels like the capsule is stuck in your throat

**Drug Facts (continued)**

**Pregnant or breast feeding**, ask a health professional before use. It is especially important not to use naproxen sodium during the last 3 months of pregnancy unless definitely directed to do so by a doctor because it may cause problems in the unborn child or complications during delivery. **Keep out of reach of children.** In case of overdose, get medical help or contact a Poison Control Center right away.

**Directions**

- do not take more than directed
- the smallest effective dose should be used
- drink a full glass of water with each dose
- if taken with food, this product may take longer to work

**Adults and children 17 years and older:**

- take 1 capsule every 8 to 12 hours while symptoms last
- for the first dose you may take 2 capsules within the first hour
- do not exceed 2 capsules in any 8- to 12-hour period
- do not exceed 5 capsules in a 24-hour period

**Children under 17 years:** ask a doctor

**Other information**

- each capsule contains sodium 20 mg
- store at 20°-25°C (68°-77°F) avoid high humidity and excessive heat above 40°C (104°F)
- Protect from light
- read all directions and warnings before use. Keep carton.

**Inactive ingredients**

F53C Blue #1, gelatin, glycerin, lactic acid, mannitol, pharmaceutical ink, polyethylene glycol, povidone, propylene glycol, purified water, sorbitan, sorbitol

**Questions or comments?**  
**1 888 235 2466 (Mon-Fri 9AM-5PM EST)**

**Naproxen Sodium Capsules, 220 mg (NSAID)**

**Pain Reliever/Fever Reducer**

Do not use if pregnant, breastfeeding, or taking aspirin

**Naproxen Sodium Capsules, 220 mg (NSAID)**

**Pain Reliever/Fever Reducer**

NDC 69452-179-16

**Strength to last 12 hours**

50 CAPSULES

Avalon Size

**Drug Facts**

**Active ingredient (in each capsule)** Naproxen sodium 220 mg (naproxen 200 mg (NSAID)\*). \*Pain reliever/fever reducer/nonsteroidal anti-inflammatory drug

**Purposes**

- temporarily relieves minor aches and pains due to:
  - muscular aches
  - menstrual cramps
  - backache
  - toothache
  - the common cold
  - temporarily reduces fever

**Warnings**

**Allergy alert:** Naproxen sodium may cause a severe allergic reaction, especially in people allergic to aspirin. Symptoms may include:

- swelling of the face, lips, tongue, or throat
- difficulty breathing
- hives
- skin redness
- itching
- blistering

If an allergic reaction occurs, stop use and seek medical help right away.

**Stomach bleeding warning:** This product contains an NSAID, which may cause severe stomach bleeding. The chance is higher if you:

- are age 65 or older
- have had stomach ulcers or bleeding problems
- take a blood thinner (anticoagulant) or steroid drug
- take other drugs containing prescription or nonprescription NSAIDs (aspirin, ibuprofen, naproxen, or others)
- have 3 or more alcoholic drinks every day while using this product

**Heart attack and stroke warning:** NSAIDs, except aspirin, increase the risk of heart attack, heart failure, and stroke. These can be fatal. The risk is higher if you use more than directed or for longer than directed.

L000000  
R0220

Manufactured for:  
**BIONPHARMA**  
 600 Haverfield Road,  
 Princeton, NJ 08540

Lot No:  
Exp. Date:

BIONPHARMA			
Labeling Format Information:			
Fonts: Helvetica Condensed Bold, Helvetica Condensed, Helvetica Condensed Bold Oblique			
<b>Drug Facts:</b>	8pt	<b>Leading:</b>	7.2pt
<b>Header:</b>	7pt	<b>Bullets:</b>	5pt
<b>Subheader:</b>	6pt	<b>Barlines:</b>	.6pt
<b>Body Text:</b>	6pt	<b>Hairlines:</b>	.2pt
<b>Drug Facts (continued):</b>	7pt		
Horizontal Scale: 100%		Average Kerning: 0%	

**Drug Facts (continued)**

**Do not use**

- if you have ever had an allergic reaction to any other pain reliever/fever reducer
- right before or after heart surgery

**Ask a doctor before use**

- stomach bleeding warning applies to you
- you have a history of stomach problems, such as heartburn
- you have high blood pressure, heart disease, liver cirrhosis, kidney disease, asthma, or had a stroke
- you are taking a diuretic
- you have problems or serious side effects from taking pain relievers or fever reducers

**Ask a doctor or pharmacist before use if you are**

- under a doctor's care for any serious condition
- taking aspirin for heart attack or stroke, because naproxen may decrease this benefit of aspirin
- taking any other drug

**When using this product**

- take with food or milk if stomach upset occurs

**Stop use and ask a doctor if**

- you experience any of the following signs of stomach bleeding:
  - stool that is black or dark red
  - vomit that is bright red or dark red
  - have blood or black stools
- have stomach pain that does not get better
- have chest pain or trouble breathing
- weakness in one part or side of body
- slurred speech
- eg sawe ling
- pain gets worse or lasts more than 0 days
- fever gets worse or lasts more than 3 days
- redness or swelling is present in the painful area
- any new symptoms appear
- you have dizziness or lightheadedness
- it feels like the capsule is stuck in your throat

**Drug Facts (continued)**

**Pregnant or breast feeding:** ask a health professional before use. It is especially important not to use naproxen sodium during the last 3 months of pregnancy unless definitely directed to do so by a doctor because it may cause problems in the unborn child or complications during delivery.

**Keep out of reach of children.** In case of overdose, get medical help or contact a Poison Control Center right away.

**Directions**

- do not take more than directed
- he sma lest effective dose should be used
- drink a full glass of water with each dose
- if taken with food, this product may take longer to work

**Adults and children 12 years and older:**

- take 1 capsule every 8 to 12 hours while symptoms last
- for the first dose you may take 2 capsules within the first hour
- do not exceed 2 capsules in any 8- to 12-hour period
- do not exceed 3 capsules in a 24-hour period

**Children under 12 years:** ask a doctor

**Other information**

- each capsule contains sodium 20 mg
- store at 20-25°C (68-77°F) avoid high humidity and excessive heat above 40°C (104°F)
- Protect from light
- read all directions and warnings before use. Keep carton.

**Inactive ingredients**

F53C Blue #1, gelatin, glycerin, lactic acid, mannitol, pharmaceutical ink, polyethylene glycol, povidone, propylene glycol, purified water, sorbitan, sorbitol

**Questions or comments?**  
**1 888 235 2468 (Mon - Fri 9AM - 5PM EST)**

© 2011 This product is not manufactured or distributed by the owners of ALDI®. Logo © ALDI

**Drug Facts**

**Active ingredient (in each capsule)**  
 Naproxen sodium 220 mg

**Purposes**  
 Pain reliever/fever reducer  
 nonsteroidal anti-inflammatory drug

**Uses**

- temporarily relieves minor aches and pains due to:
  - minor pain of arthritis
  - muscular aches
  - backache
  - menstrual cramps
  - headache
  - toothache
  - the common cold
  - temporarily reduces fever

**Warnings**

**Allergy alert:** Naproxen sodium may cause a severe allergic reaction, especially in people allergic to aspirin. Symptoms may include:

- hives
- facial swelling
- asthma (wheezing)
- shock
- skin redness/itching
- rash
- blisters

If an allergic reaction occurs, stop use and seek medical help right away.

**Stomach bleeding warning:** This product contains an NSAID, which may cause severe stomach bleeding. The chance is higher if you:

- are age 65 or older
- have had stomach ulcers or bleeding problems
- take a blood thinner (anticoagulant) or steroid drug
- take other drugs containing prescription or nonprescription NSAIDs (aspirin, ibuprofen, naproxen, or others)
- have 3 or more alcoholic drinks every day while using this product

**Take more or for a longer time than directed**

**Heart attack and stroke warning:** NSAIDs, except aspirin, increase the risk of heart attack, heart failure, and stroke. These can be fatal. The risk is higher if you use more than directed or for longer than directed.

**Compare to the active ingredient of ALDI® Liquid Gels ...**

**50 CAPSULES**

Aldi Size

Manufactured for:  
**BIONPHARMA**  
 600 Haverhill Road,  
 Princeton, NJ 08540



6 69452 17916 1

Lot No:  
 Exp. Date:

BIONPHARMA			
Labeling Format Information:			
Fonts: Helvetica Condensed Bold, Helvetica Condensed, Helvetica Condensed Bold Oblique			
<b>Drug Facts:</b>	8pt	<b>Leading:</b>	7.2pt
<b>Header:</b>	7pt	<b>Bullets:</b>	5pt
<b>Subheader:</b>	6pt	<b>Barlines:</b>	.6pt
<b>Body Text:</b>	6pt	<b>Hairlines:</b>	.2pt
<b>Drug Facts (continued):</b>	7pt		
Horizontal Scale: 100%		Average Kerning: 0%	



















<b>BIONPHARMA</b>	
<b>Labeling Format Information:</b>	
Helvetica Condensed Bold, Helvetica Condensed, Helvetica Condensed Bold Oblique	
<b>Drug Facts:</b>	8pt
<b>Header:</b>	7pt
<b>Subheader:</b>	6pt
<b>Body Text:</b>	6pt
<b>Drug Facts (continued):</b>	7pt
Horizontal Scale: 100%	
Average Kerning: 0%	
<b>Leading:</b>	7.2pt
<b>Bullets:</b>	5pt
<b>Barlines:</b>	.6pt
<b>Headlines:</b>	.2pt

**NDC 69452-179-79**

**Compare to the active ingredient of ALEVE® Liquid Gels\*\*\***

## Naproxen Sodium Capsules, 220 mg (NSAID)

**Pain Reliever/Fever Reducer**



Actual Size

**160 CAPSULES**

**Strength to last 12 hours**

**NDC 69452-179-79**

**Compare to the active ingredient of ALEVE® Liquid Gels\*\*\***

## Naproxen Sodium Capsules, 220 mg (NSAID)

**Pain Reliever/Fever Reducer**



Actual Size

**160 CAPSULES**

**Strength to last 12 hours**

**Do not use if printed safety seal under cap is torn or missing.**



Lot No:  
Exp. Date:

**Drug Facts (font size)**

**Important information:** Naproxen sodium may cause a severe allergic reaction, especially in people who are allergic to aspirin. Tell your doctor if you have ever had an allergic reaction to aspirin, salicylates, or other NSAIDs. Tell your doctor if you have ever had asthma, hives, or skin redness. Tell your doctor if you are taking any other drugs, especially blood thinners, or if you are pregnant, planning to get pregnant, or breastfeeding.

**Warnings:** Tell your doctor if you have ever had an allergic reaction to aspirin, salicylates, or other NSAIDs. Tell your doctor if you have ever had asthma, hives, or skin redness. Tell your doctor if you are taking any other drugs, especially blood thinners, or if you are pregnant, planning to get pregnant, or breastfeeding.

**Directions:** Take 1 capsule every 8 to 12 hours with food or a meal. Do not take more than 2 capsules in 24 hours. Do not take more than 3 capsules in a 24-hour period. Do not take more than 12 capsules in 12 hours. Do not take more than 12 capsules in 12 hours. Do not take more than 12 capsules in 12 hours.

**Other information:** Keep this and all other medicines away from heat and moisture. Do not use if the seal is broken. Do not use if the cap is loose. Do not use if the cap is cracked. Do not use if the cap is damaged. Do not use if the cap is missing. Do not use if the cap is broken. Do not use if the cap is cracked. Do not use if the cap is damaged. Do not use if the cap is missing.

**Manufactured for:** BIONPHARMA, 600 Alexander Road, Princeton, NJ 08540

**Drug Facts** (top left)

**Warnings** (top middle)

**Directions** (top right)

**Other information** (middle left)

**Contains 220 mg of Naproxen Sodium per capsule** (middle right)

**Keep out of reach of children** (bottom left)

**See important information about this medicine on page 2 of this leaflet** (bottom right)

**Naproxen Sodium Capsules, 220 mg (NSAID)**  
 Pain Reliever/Fever Reducer  
 Strength to last 12 hours

**2 PACK 2 x 80 CT**

**Naproxen Sodium Capsules, 220 mg (NSAID)**  
 Pain Reliever/Fever Reducer

**2 PACK 2 x 80 CT**

**Naproxen Sodium Capsules, 220 mg (NSAID)**  
 Pain Reliever/Fever Reducer

**2 PACK 2 x 80 CT**

**Do not use if printed safety seal under cap is torn or missing.**

**Naproxen Sodium Capsules, 220 mg (NSAID)**  
 Pain Reliever/Fever Reducer  
 Strength to last 12 hours

**160 CAPSULES**      2 Bottles: x 80 Capsules Each

**Strength to last 12 hours**

**LOT & EXP**

Manufactured for:  
**Bionpharma Inc.**  
 600 Alexander Road,  
 Princeton, NJ 08540

L0000000  
 R0220



BIONPHARMA			
Labeling Format Information:			
Fonts: Helvetica Condensed Bold, Helvetica Condensed, Helvetica Condensed Bold, Helvetica Condensed			
Drug Facts:	10pt	Leading:	6.5pt
Header:	8pt	Bullets:	5pt
Subheader:	6pt	Barlines:	2.5pt
Body Text:	6pt	Hairlines:	5pt
Drug Facts:	(continued): 8pt		
Horizontal Scale: 100%		Average Kerning: 0%	

**Drug Facts (top panel)**

**Warnings:**

- Do not take if you are allergic to naproxen or any of the ingredients.
- Do not take if you are taking another NSAID (non-steroidal anti-inflammatory drug).
- Do not take if you are taking aspirin, salicylates, or other blood thinners.
- Do not take if you are taking warfarin or other blood thinners.
- Do not take if you are taking ACE inhibitors, angiotensin II receptor antagonists, or diuretics.
- Do not take if you are taking lithium.
- Do not take if you are taking digoxin.
- Do not take if you are taking cyclosporin.
- Do not take if you are taking tacrolimus.
- Do not take if you are taking sirolimus.
- Do not take if you are taking everolimus.
- Do not take if you are taking temsirolimus.
- Do not take if you are taking sunitinib.
- Do not take if you are taking vandetanib.
- Do not take if you are taking cabazitaxel.
- Do not take if you are taking docetaxel.
- Do not take if you are taking paclitaxel.
- Do not take if you are taking epirubicin.
- Do not take if you are taking idarubicin.
- Do not take if you are taking mitoxantrone.
- Do not take if you are taking vinorelbine.
- Do not take if you are taking irinotecan.
- Do not take if you are taking oxaliplatin.
- Do not take if you are taking fluorouracil.
- Do not take if you are taking capecitabine.
- Do not take if you are taking methotrexate.
- Do not take if you are taking cyclophosphamide.
- Do not take if you are taking ifosfamide.
- Do not take if you are taking busulfan.
- Do not take if you are taking estramustine.
- Do not take if you are taking mitomycin.
- Do not take if you are taking topotecan.
- Do not take if you are taking irinotecan.
- Do not take if you are taking oxaliplatin.
- Do not take if you are taking fluorouracil.
- Do not take if you are taking capecitabine.
- Do not take if you are taking methotrexate.
- Do not take if you are taking cyclophosphamide.
- Do not take if you are taking ifosfamide.
- Do not take if you are taking busulfan.
- Do not take if you are taking estramustine.
- Do not take if you are taking mitomycin.
- Do not take if you are taking topotecan.

**Directions:**

Take 1 capsule 2 times a day with food and water.

**Other information:**

Keep out of reach of children.

Use by the expiration date printed on the label.

Keep this and all other medicines in their original containers.

Do not use if the printed safety seal under the cap is torn or missing.

**Contains 160 capsules (2 bottles of 80 capsules each).**

**Naproxen Sodium Capsules, 220 mg (NSAID)**  
Pain Reliever/Fever Reducer  
Strength to last 12 hours

**2 PACK 2 x 80 CT**

**Naproxen Sodium Capsules, 220 mg (NSAID)**  
Pain Reliever/Fever Reducer

**2 PACK 2 x 80 CT**

**Naproxen Sodium Capsules, 220 mg (NSAID)**  
Pain Reliever/Fever Reducer

**2 PACK 2 x 80 CT**

**Naproxen Sodium Capsules, 220 mg (NSAID)**  
Pain Reliever/Fever Reducer  
Strength to last 12 hours

**160 CAPSULES** 2 Bottles: x 80 Capsules Each

**Strength to last 12 hours**

**Do not use if printed safety seal under cap is torn or missing.**

**LOT & EXP**

**Compare to the active ingredient of ALEVE® Liquid Gels**

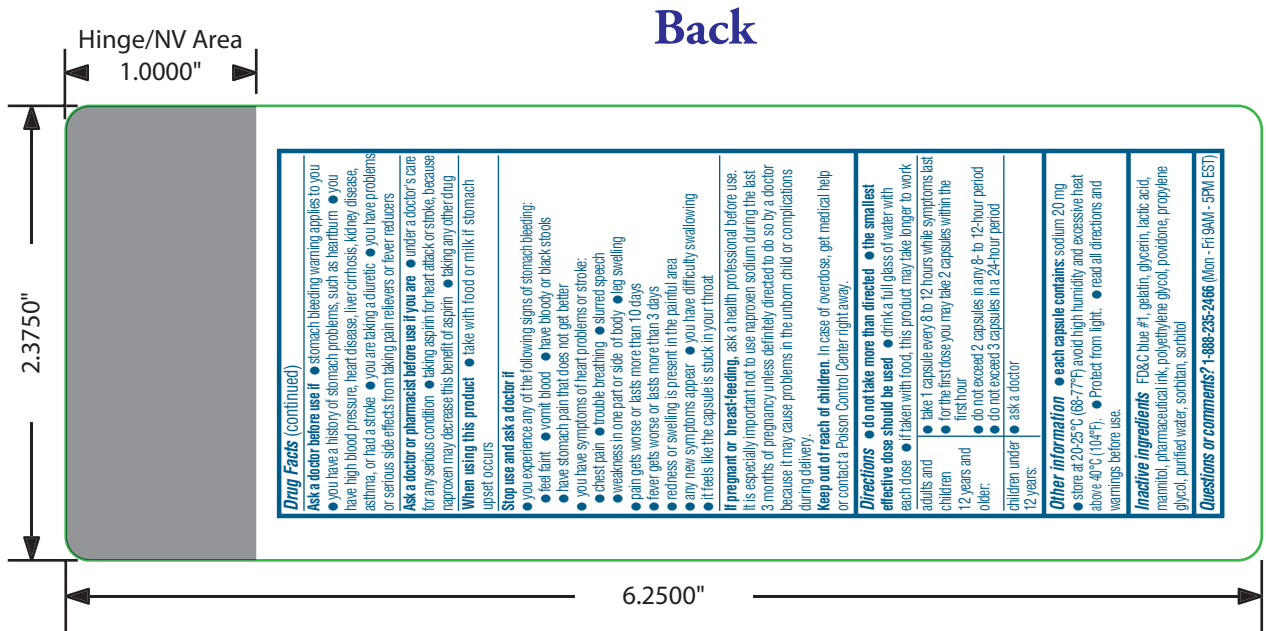
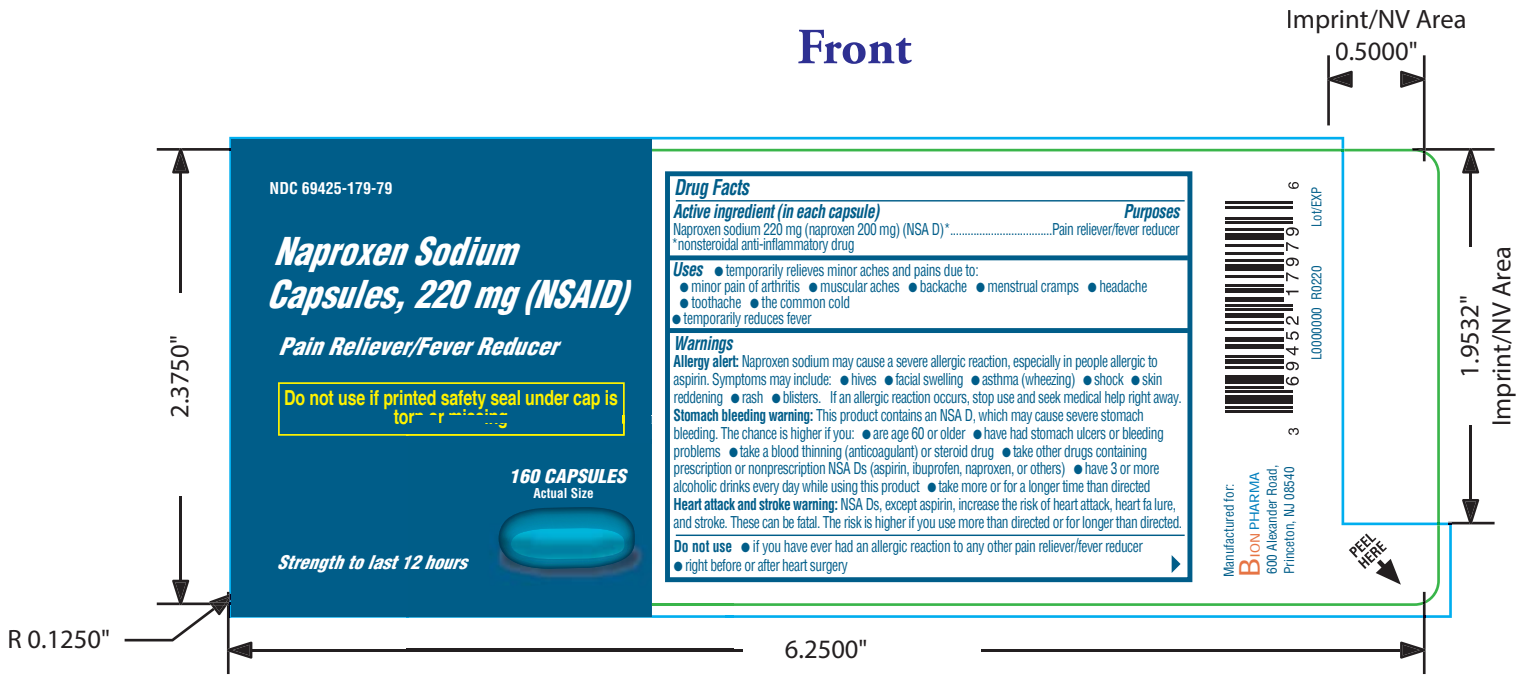
**Compare to the active ingredient of ALEVE® Liquid Gels**

Manufactured for:  
**Bionpharma Inc.**  
600 Alexander Road,  
Princeton, NJ 08540

L0000000  
R0220

**0 00000 00000**

BIONPHARMA			
Labeling Format Information:			
Fonts: Helvetica Condensed Bold, Helvetica Condensed, Helvetica Condensed Bold, Helvetica Condensed			
Drug Facts:	10pt	Leading:	6.5pt
Header:	8pt	Bullets:	5pt
Subheader:	6pt	Barlines:	2.5pt
Body Text:	6pt	Hairlines:	5pt
Drug Facts (continued):	9pt		
Horizontal Scale: 100%		Average Kerning: 0%	



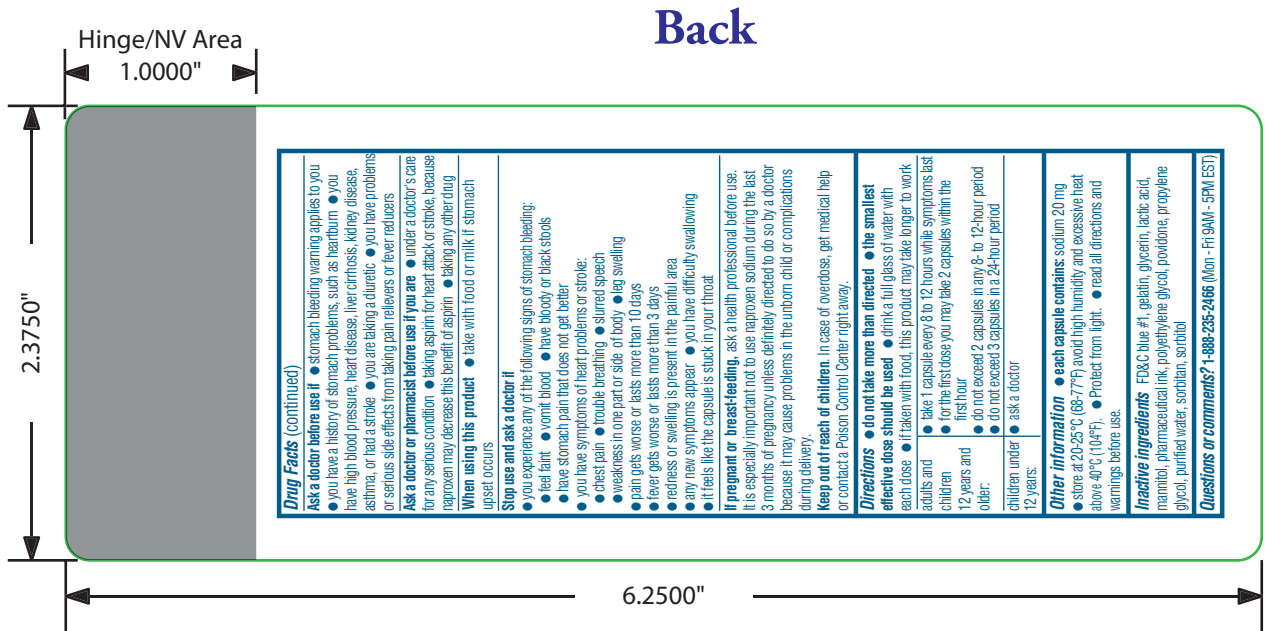
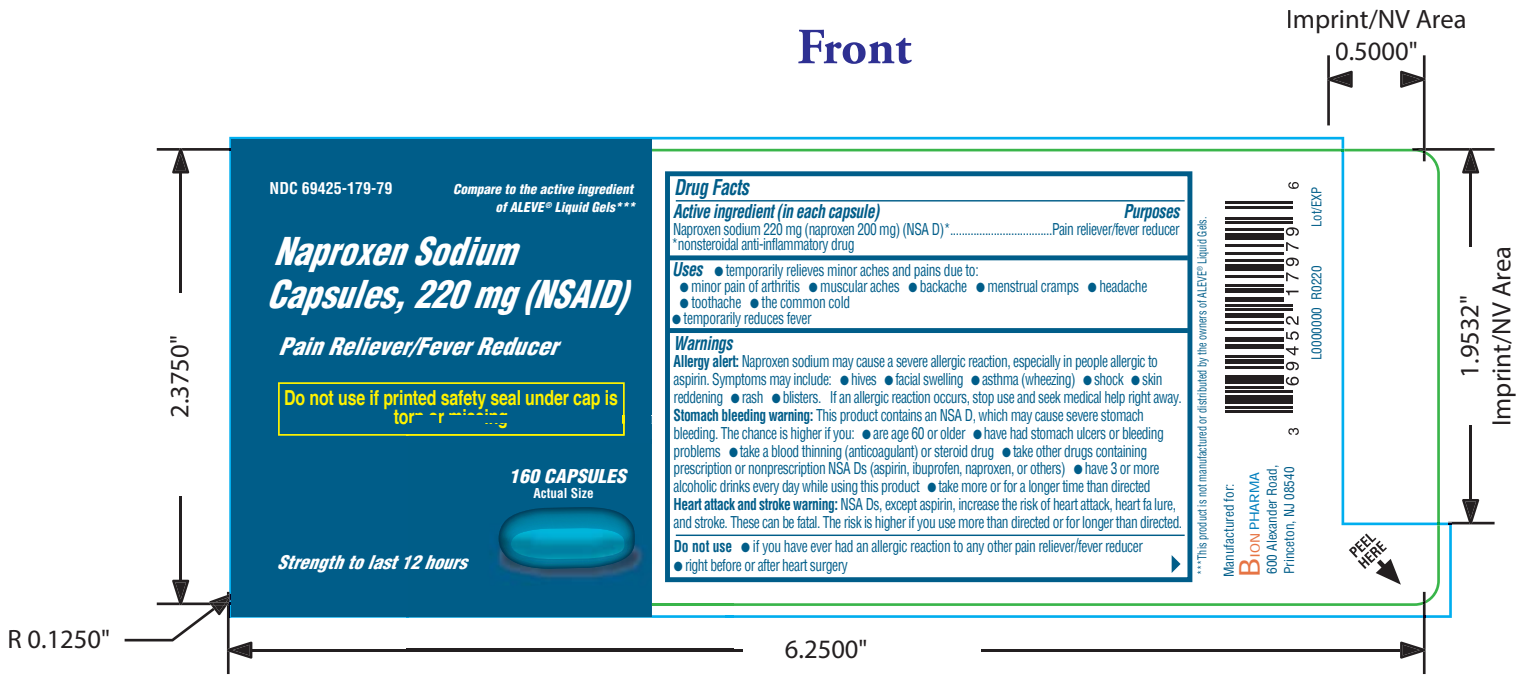
**BIONPHARMA**

**Labeling Format Information:**

**Fonts:** Helvetica Condensed Bold, Helvetica Condensed, Helvetica Condensed Bold Oblique

<b>Drug Facts:</b>	8pt	<b>Leading:</b>	6.5pt
<b>Header:</b>	7pt	<b>Bullets:</b>	5pt
<b>Subheader:</b>	6pt	<b>Barlines:</b>	7pt
<b>Body Text:</b>	6pt	<b>Hairlines:</b>	.5pt
<b>Drug Facts (continued):</b>	7pt		

Horizontal Scale: 100%      Average Kerning: 0%

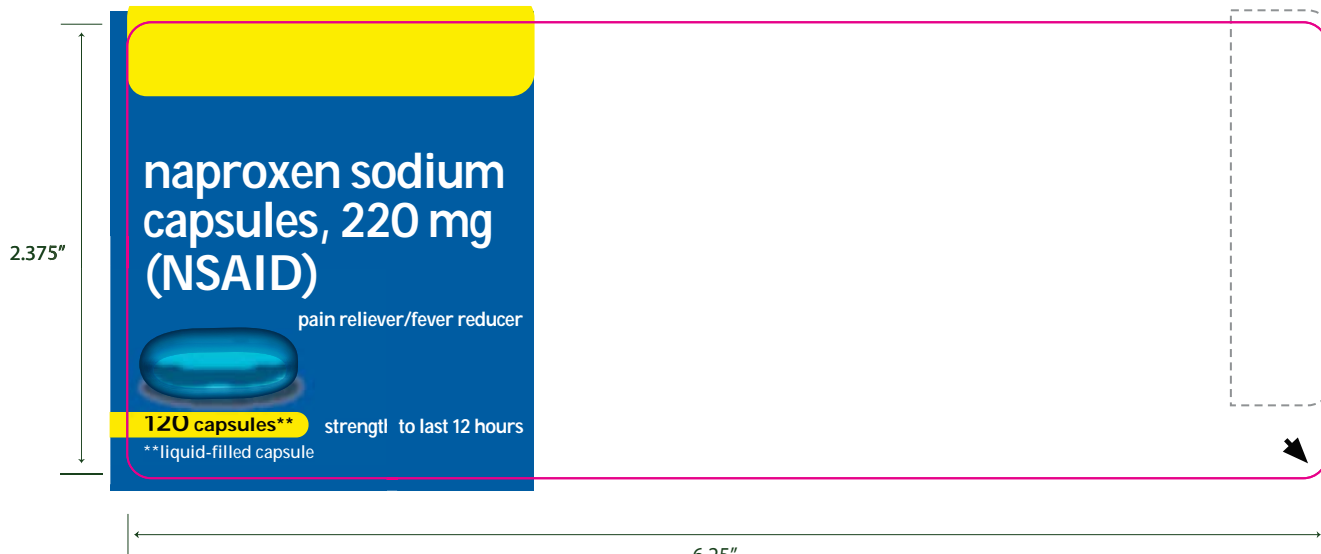


BIONPHARMA	
Labeling Format Information:	
Fonts: Helvetica Condensed Bold, Helvetica Condensed, Helvetica Condensed Bold Oblique	
<b>Drug Facts:</b>	8pt
<b>Header:</b>	7pt
<b>Subheader:</b>	6pt
<b>Body Text:</b>	6pt
<b>Drug Facts (continued):</b>	7pt
<b>Leading:</b>	6.5pt
<b>Bullets:</b>	5pt
<b>Barlines:</b>	7pt
<b>Hairlines:</b>	.5pt
Horizontal Scale: 100%	
Average Kerning: 0%	

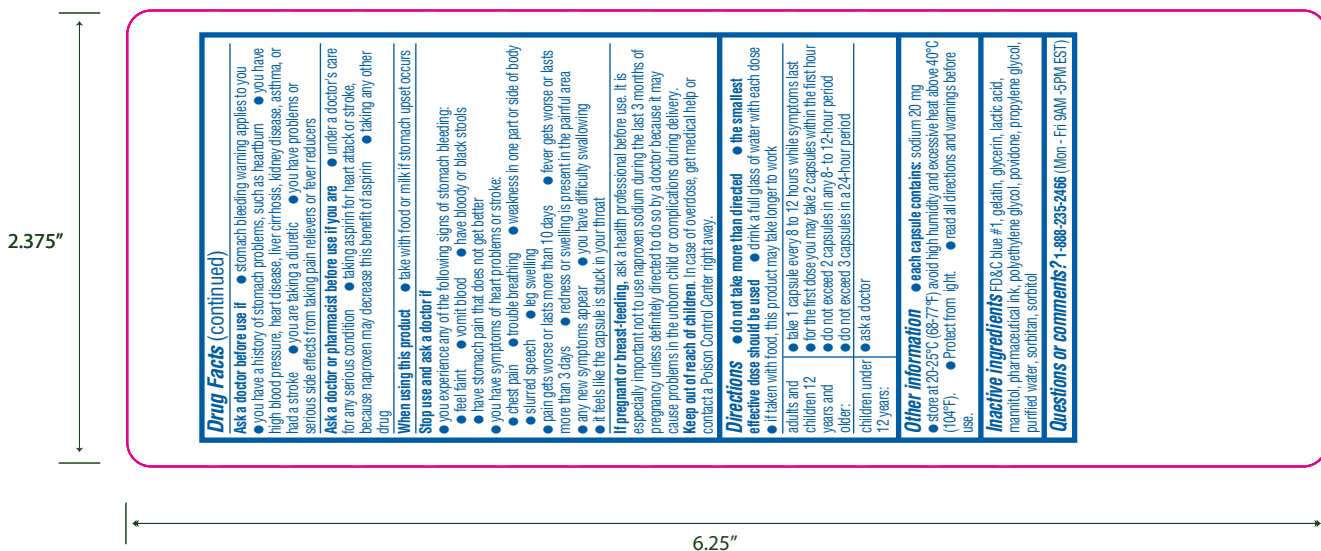


.125" corner radius

**Front**



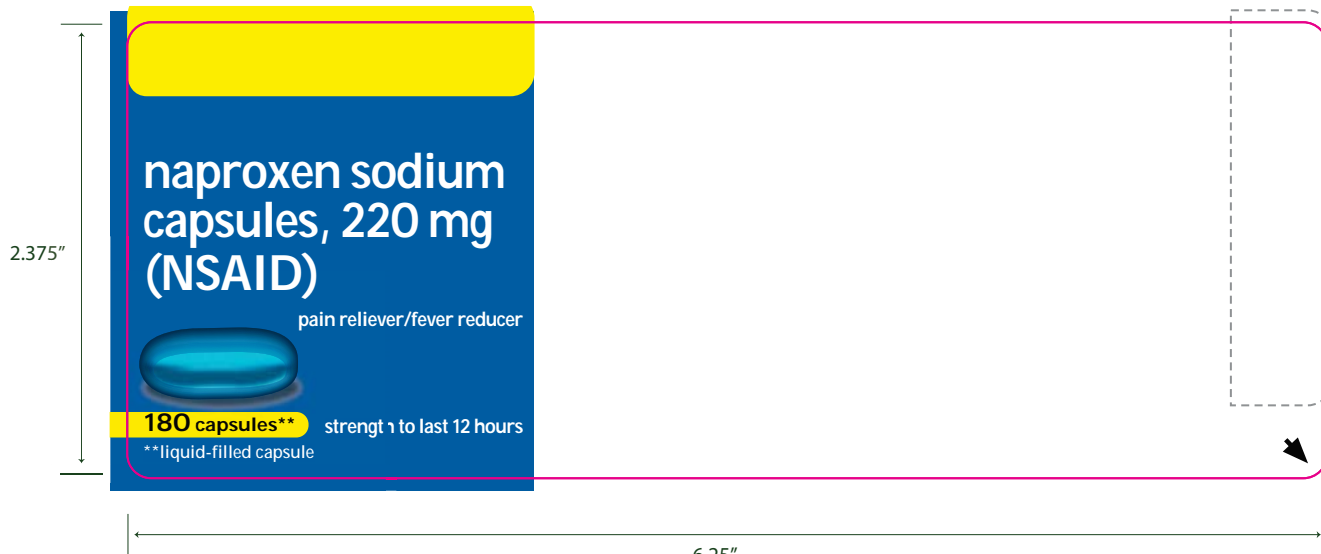
**Back**



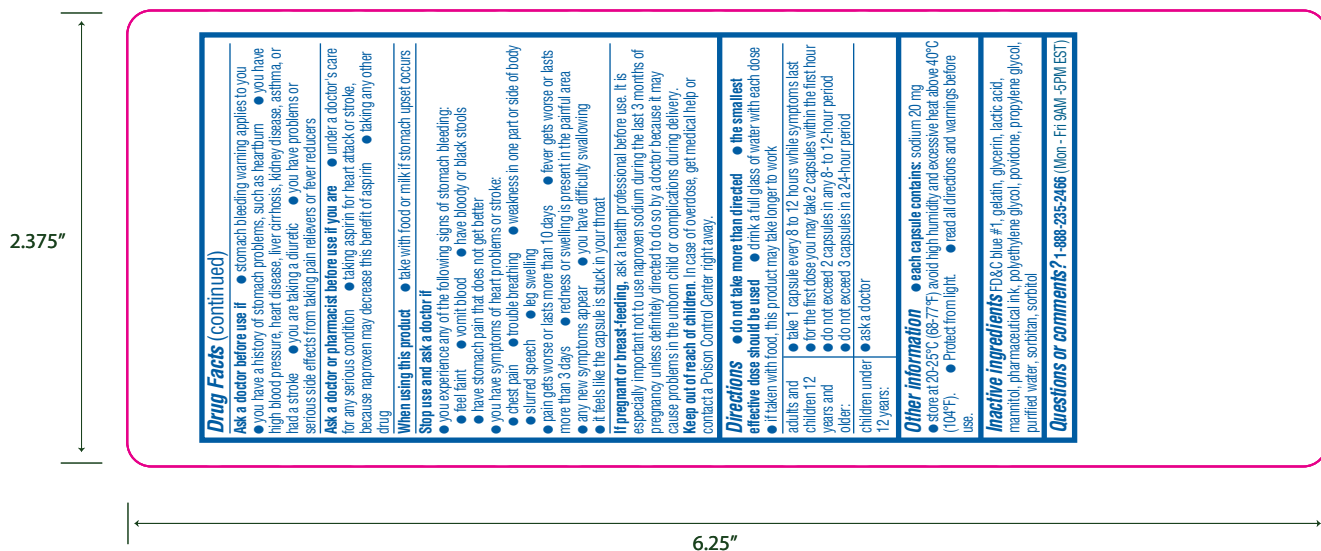
<b>BIONPHARMA</b>	
<b>Labeling Format Information:</b>	
<b>Fonts:</b> Helvetica Condensed Bold, Helvetica Condensed, Helvetica Condensed Bold Oblique	
<b>Drug Facts:</b>	9pt
<b>Header:</b>	8pt
<b>Subheader:</b>	6pt
<b>Body Text:</b>	6pt
<b>Drug Facts (continued):</b>	N/A
<b>Leading:</b>	6.5pt
<b>Bullets:</b>	5pt
<b>Barlines:</b>	2pt
<b>Hairlines:</b>	.5pt
Horizontal Scale: 85%	
Average Kerning: 0%	

.125" corner radius

**Front**



**Back**



<b>BIONPHARMA</b>	
<b>Labeling Format Information:</b>	
<b>Fonts:</b> Helvetica Condensed Bold, Helvetica Condensed, Helvetica Condensed Bold Oblique	
<b>Drug Facts:</b>	9pt
<b>Header:</b>	8pt
<b>Subheader:</b>	6pt
<b>Body Text:</b>	6pt
<b>Drug Facts (continued):</b>	N/A
<b>Leading:</b>	6.5pt
<b>Bullets:</b>	5pt
<b>Barlines:</b>	2pt
<b>Hairlines:</b>	.5pt
Horizontal Scale: 85%      Average Kerning: 0%	





**Drug Facts (continued)**

**Ask a doctor before use if**

- the stomach bleeding warning applies to you
- you have a history of stomach problems, such as heartburn
- you have high blood pressure, heart disease, liver problems, kidney disease, asthma, or had a stroke
- you are taking a diuretic
- you have problems or serious side effects from taking pain relievers or fever reducers

**Ask a doctor or pharmacist before use if you are**

- under a doctor's care for any serious condition
- taking aspirin for heart attack or stroke, because naproxen may decrease this benefit of aspirin
- taking any other drug

**When using this product**

- take with food or milk if stomach upset occurs

**Stop use and ask a doctor if**

- you experience any of the following signs of stomach bleeding:
  - feel faint
  - vomit blood
  - have bloody or black stools
- have stomach pain that does not get better
- you have symptoms of heart problems or stroke:
  - chest pain
  - trouble breathing
  - weakness in one part or side of body
  - slurred speech
  - leg swelling
- pain gets worse or lasts more than 3 days
- fever gets worse or lasts more than 3 days
- you have difficulty swallowing
- if the cap of the capsule is stuck in your throat
- redness or swelling is present in the painful area
- any new symptoms appear

**If pregnant or breast feeding, ask a health professional before use.** It is especially important not to use naproxen sodium during the last 3 months of pregnancy unless definitely directed to do so by a doctor because it may cause problems in the unborn child or complications during delivery.

**Keep out of reach of children.** In case of overdose, get medical help or contact a Poison Control Center right away.

**Drug Facts (continued)**

**Directions**

- do not take more than directed
- the smallest effective dose should be used
- drink a full glass of water with each dose
- if taken with food, this product may take longer to work

**Adults and children 12 years and older**

- ask a doctor
- take 1 capsule every 8 hours to 2 hours with symptoms last
- for the first dose you may take 2 capsules within the first hour
- do not exceed 2 capsules in any 8-hour to 12-hour period
- do not exceed 3 capsules in a 24-hour period

**Other information**

- each capsule contains: sodium 20 mg
- store at 20° to 25°C (68° to 77°F). Avoid high humidity and excessive heat above 40°C (104°F).
- Protect from light.
- read all directions and warnings before use. Keep carton.

**Inactive ingredients**  
FDAC 1, 2, 3, 4, 5, 6, 7, 8, 9, 10, 11, 12, 13, 14, 15, 16, 17, 18, 19, 20, 21, 22, 23, 24, 25, 26, 27, 28, 29, 30, 31, 32, 33, 34, 35, 36, 37, 38, 39, 40, 41, 42, 43, 44, 45, 46, 47, 48, 49, 50, 51, 52, 53, 54, 55, 56, 57, 58, 59, 60, 61, 62, 63, 64, 65, 66, 67, 68, 69, 70, 71, 72, 73, 74, 75, 76, 77, 78, 79, 80, 81, 82, 83, 84, 85, 86, 87, 88, 89, 90, 91, 92, 93, 94, 95, 96, 97, 98, 99, 100

**Questions or comments?**  
call toll free: 1 888 235 2466 (Mon - Fri 9AM - 5PM EST)

Manufactured for:  
**BIONPHARMA**  
800 Alexander Road  
Piscataway, NJ 08854

L0000000  
R0220

**Drug Facts**

**Active ingredient (in each capsule)**

naproxen sodium 220 mg (NSAID) . . . . . Pain reliever/fever reducer  
nonsteroidal anti-inflammatory drug

**Purposes**

- temporarily relieves minor aches and pains due to:
  - menstrual cramps
  - muscular aches
  - headache
  - backache
  - minor pain of arthritis
- headache
- the common cold
- temporarily reduces fever

**Uses**

- temporarily relieves minor aches and pains due to:
  - menstrual cramps
  - muscular aches
  - headache
  - backache
  - minor pain of arthritis
- headache
- the common cold
- temporarily reduces fever

**Warnings**

**Allergy alert:** Naproxen sodium may cause a severe allergic reaction, especially in people allergic to aspirin. Symptoms may include: hives, facial swelling, difficulty breathing, wheezing, shock, skin redness, rash, blisters. If an allergic reaction occurs, stop use and seek medical help right away.

**Stomach bleeding warning:** This product contains an NSAID, which may cause severe stomach bleeding. The chance is higher if you: are age 60 or older; have had stomach ulcers or bleeding problems; take other drugs containing prescription or nonprescription NSAIDs (aspirin, ibuprofen, naproxen, or others); have 3 or more alcoholic drinks every day while using this product; take more or for a longer time than directed.

**Heart attack and stroke warning:** NSAIDs, except aspirin, increase the risk of heart attack, heart failure, and stroke. These can be fatal. The risk is higher if you use more than directed or for longer than directed.

**Do not use**

- if you have ever had an allergic reaction to any other pain reliever/fever reducer
- right before or after heart surgery


Do not use if printed safety seal is under cap. See back of carton for more info.

40 capsules

naproxen sodium capsules, 220 mg (NSAID)  
pain reliever/fever reducer

12 hour menstrual pain relief

temporarily relieves minor cramps, backache, and headache



Lot No:  
Exp. Date:

<b>BIONPHARMA</b>			
<b>Labeling Format Information:</b>			
Fonts: Helvetica Condensed Bold, Helvetica Condensed, Helvetica Condensed Bold Oblique, Georgia			
<b>Drug Facts:</b>	8pt	<b>Leading:</b>	7pt
<b>Header:</b>	7pt	<b>Bullets:</b>	5pt
<b>Subheader:</b>	6pt	<b>Barlines:</b>	0.6pt
<b>Body Text:</b>	6pt	<b>Hairlines:</b>	0.2pt
<b>Drug Facts (continued):</b>	7pt		
Horizontal Scale: 100%		Average Kerning: 0%	

**Drug Facts (continued)**

**Ask a doctor before use if**

- the stomach bleeding warning applies to you
- you have a history of stomach problems, such as heartburn
- you have high blood pressure, heart disease, liver problems, kidney disease, asthma, or had a stroke
- you are taking a diuretic
- you have problems or serious side effects from taking pain relievers or fever reducers

**Ask a doctor or pharmacist before use if you are**

- under a doctor's care for any serious condition
- taking aspirin for heart attack or stroke, because naproxen may decrease this benefit of aspirin
- taking any other drug

**When using this product**

- take with food or milk if stomach upset occurs

**Stop use and ask a doctor if**

- you experience any of the following signs of stomach bleeding:
  - feel faint
  - vomit blood
  - have bloody or black stools
- have stomach pain that does not get better
- you have symptoms of heart problems or stroke:
  - chest pain
  - trouble breathing
  - weakness in one part or side of body
  - slurred speech
  - leg swelling
- pain gets worse or lasts more than 10 days
- fever gets worse or lasts more than 3 days
- you have difficulty swallowing
- if the cap is like the capsule is stuck in your throat
- redness or swelling is present in the painful area
- any new symptoms appear

**If pregnant or breast feeding, ask a health professional before use.** It is especially important not to use naproxen sodium during the last 3 months of pregnancy unless definitely directed to do so by a doctor because it may cause problems in the unborn child or complications during delivery.

**Keep out of reach of children.** In case of overdose, get medical help or contact a Poison Control Center right away.

**Drug Facts (continued)**

**Directions**

- do not take more than directed
- the smallest effective dose should be used
- drink a full glass of water with each dose
- if taken with food, this product may take longer to work

**ask a doctor if you are**

- under 2 years of age
- 12 years and older

**take 1 capsule every 8 hours to 2 hours with symptoms last**

- for the first dose you may take 2 capsules within the first hour
- do not exceed 2 capsules in any 8-hour to 12-hour period
- do not exceed 3 capsules in a 24-hour period

**Other information**

- each capsule contains: sodium 20 mg
- store at 20° to 25°C (68° to 77°F). Avoid high humidity and excessive heat above 40°C (104°F).
- Protect from light.
- read all directions and warnings before use. Keep carton.

**Inactive ingredients**

FDAC 1, 2, 3, 4, 5, 6, 7, 8, 9, 10, 11, 12, 13, 14, 15, 16, 17, 18, 19, 20, 21, 22, 23, 24, 25, 26, 27, 28, 29, 30, 31, 32, 33, 34, 35, 36, 37, 38, 39, 40, 41, 42, 43, 44, 45, 46, 47, 48, 49, 50, 51, 52, 53, 54, 55, 56, 57, 58, 59, 60, 61, 62, 63, 64, 65, 66, 67, 68, 69, 70, 71, 72, 73, 74, 75, 76, 77, 78, 79, 80, 81, 82, 83, 84, 85, 86, 87, 88, 89, 90, 91, 92, 93, 94, 95, 96, 97, 98, 99, 100

**Questions or comments?**

call toll free: 1 888 235 2466 (Mon - Fri 9AM - 5PM EST)

Manufactured for:  
**BIONPHARMA**  
800 Alexander Road  
Piscataway, NJ 08854

L0000000  
R0220

**Drug Facts**

**Active ingredient (in each capsule)**

naproxen sodium 220 mg (NSAID) ... Pain reliever/fever reducer  
nonsteroidal anti-inflammatory drug

**Uses**

- temporarily relieves minor aches and pains due to:
  - menstrual cramps
  - muscular aches
  - headache
  - backache
  - minor pain of arthritis
  - toothache
  - the common cold
- temporarily reduces fever

**Warnings**

**Allergy alert:** Naproxen sodium may cause a severe allergic reaction, especially in people allergic to aspirin. Symptoms may include: hives, facial swelling, difficulty breathing, shock, skin redness, rash, blisters. If an allergic reaction occurs, stop use and seek medical help right away.

**Stomach bleeding warning:** This product contains an NSAID, which may cause severe stomach bleeding. The chance is higher if you: are age 60 or older, have had stomach ulcers or bleeding problems, take a blood thinning (anticoagulant) or steroid drug, take other drugs containing prescription or nonprescription NSAIDs (aspirin, ibuprofen, naproxen, or others), have 3 or more alcoholic drinks every day while using this product, take more or for a longer time than directed.

**Heart attack and stroke warning:** NSAIDs, except aspirin, increase the risk of heart attack, heart failure, and stroke. These can be fatal. The risk is higher if you use more than directed or for longer than directed.

**Do not use**

- if you have ever had an allergic reaction to any other pain reliever/fever reducer
- right before or after heart surgery

**naproxen sodium capsules, 220 mg (NSAID)**  
pain reliever/fever reducer

**naproxen sodium capsules, 220 mg (NSAID)**  
pain reliever/fever reducer

**12 hour menstrual pain relief**

**temporarily relieves minor cramps, backache, and headache**

**40 capsules**

**Do not use if printed safety seal is under cap. See back of carton for more info.**

**\*\* compare to the active ingredient in Menstridol™**

**\*\* This product is not manufactured or distributed by the owners of Menstridol.**

Lot No:  
Exp. Date:

<b>BIONPHARMA</b>			
<b>Labeling Format Information:</b>			
Fonts: Helvetica Condensed Bold, Helvetica Condensed, Helvetica Condensed Bold Oblique, Georgia			
<b>Drug Facts:</b>	8pt	<b>Leading:</b>	7pt
<b>Header:</b>	7pt	<b>Bullets:</b>	5pt
<b>Subheader:</b>	6pt	<b>Barlines:</b>	0.6pt
<b>Body Text:</b>	6pt	<b>Hairlines:</b>	0.2pt
<b>Drug Facts (continued):</b>	7pt		
Horizontal Scale: 100%		Average Kerning: 0%	

**Drug Facts (continued)**

**Do not use**

- if you have ever had an allergic reaction to any other pain reliever/fever reducer
- right before or after heart surgery

**Ask a doctor before use if**

- the stomach bleeding warning applies to you
- you have a history of stomach problems, such as heartburn
- you have high blood pressure, heart disease, liver cirrhosis, kidney disease, asthma, or had a stroke
- you are taking a diuretic
- you have problems or serious side effects from taking pain relievers or fever reducers

**Ask a doctor or pharmacist before use if you are**

- under a doctor's care for any serious condition
- taking aspirin for heart attack or stroke, because naproxen may decrease this benefit of aspirin
- taking any other drug

**When using this product**

- take with food or milk if stomach upset occurs

**Stop use and ask a doctor if**

- you experience any of the following signs of stomach bleeding:
  - feel faint
  - vomit blood
  - have bloody or black stools
  - have stomach pain that does not get better
- you have symptoms of heart problems or stroke:
  - chest pain
  - trouble breathing
  - weakness in one part or side of body
  - slurred speech
- leg swelling
- pain gets worse or lasts more than 10 days
- fever gets worse or lasts more than 3 days
- you have difficulty swallowing
- it feels like the capsule is stuck in your throat
- redness or swelling is present in the painful area
- any new symptoms appear

**If pregnant or breast feeding**, ask a health professional before use. It is especially important not to use naproxen sodium during the last 3 months of pregnancy unless definitely directed to do so by a doctor because it may cause problems in the unborn child or complications during delivery.

**Keep out of reach of children.** In case of overdose, get medical help or contact a Poison Control Center right away. ▶

**Drug Facts (continued)**

**Directions**

- do not take more than directed
- the smallest effective dose should be used
- drink a full glass of water with each dose
- if taken with food, this product may take longer to work

under 12 years ● ask a doctor

adults and children 12 years and older

- take 1 capsule every 8 hours to 12 hours while symptoms last
- for the first dose you may take 2 capsules within the first hour
- do not exceed 2 capsules in any 8-hour to 12-hour period
- do not exceed 3 capsules in a 24-hour period

**Other information**

- each capsule contains: sodium 20 mg
- store at 20° to 25°C (68° to 77°F). Avoid high humidity and excessive heat above 40°C (104°F). ● Protect from light.
- read a l directions and warnings before use. Keep carton.

**Inactive ingredients**  
FD&C blue #1, gelatin, glycerin, lactic acid, mannitol, pharmaceutical ink, polyethylene glycol, povidone, propylene glycol, purified water, sorbitan, sorbitol

**Questions or comments?**  
call to 1-free 1 888 235 2466 (Mon - Fri 9AM - 5PM EST)

Manufactured for:  
**BIONPHARMA**  
600 Alexander Road,  
Princeton, NJ 08540

L0000000  
R0220

**Drug Facts**

**Active ingredient (in each capsule)** **Purposes**

Naproxen sodium 220 mg  
(naproxen 200 mg) (NSAID) \* Pain reliever/fever reducer  
\*nonsteroidal anti-inflammatory drug

**Uses**

- temporarily relieves minor aches and pains due to:
  - menstrual cramps
  - muscular aches
  - headache
  - backache
  - minor pain of arthritis
  - toothache
  - the common cold
- temporarily reduces fever

**Warnings**

**Allergy alert:** Naproxen sodium may cause a severe allergic reaction, especially in people allergic to aspirin. Symptoms may include:

- facial swelling
- asthma (wheezing)
- shock
- skin reddening
- rash
- blisters

If an allergic reaction occurs, stop use and seek medical help right away.

**Stomach bleeding warning:** This product contains an NSAID, which may cause severe stomach bleeding. The chance is higher if you:

- are age 60 or older
- have had stomach ulcers or bleeding problems
- take a blood thinning (anticoagulant) or steroid drug
- take other drugs containing prescription or nonprescription NSAIDs (aspirin, ibuprofen, naproxen, or others)
- have 3 or more alcoholic drinks every day while using this product
- take more or for a longer time than directed

**Heart attack and stroke warning:** NSAIDs, except aspirin, increase the risk of heart attack, heart failure, and stroke. These can be fatal. The risk is higher if you use more than directed or for longer than directed. ▶

naproxen sodium capsules, 220 mg (NSAID)  
pain reliever/fever reducer

naproxen sodium capsules, 220 mg (NSAID)  
pain reliever/fever reducer

12 hour menstrual pain relief

temporarily relieves minor cramps, backache, and headache

80 capsules\*\*

Actual Size

NP1

liquid-filled capsule

NDC 69452-270-78



3 69452 27078 3

Lot No:  
Exp. Date:

<b>BIONPHARMA</b>	
<b>Labeling Format Information:</b>	
<b>Fonts:</b> Helvetica Condensed Bold, Helvetica Condensed, Helvetica Condensed Bold Oblique Georgia	
<b>Drug Facts:</b>	8pt
<b>Header:</b>	7pt
<b>Subheader:</b>	6pt
<b>Body Text:</b>	6pt
<b>Drug Facts (continued):</b>	7pt
<b>Leading:</b>	7pt
<b>Bullets:</b>	5pt
<b>Barlines:</b>	0.6pt
<b>Hairlines:</b>	0.2pt
Horizontal Scale: 100%      Average Kerning: 0%	

**Drug Facts (continued)**

**Do not use**

- if you have ever had an allergic reaction to any other pain reliever/fever reducer
- right before or after heart surgery

**Ask a doctor before use if**

- the stomach bleeding warning applies to you
- you have a history of stomach problems, such as heartburn
- you have high blood pressure, heart disease, liver cirrhosis, kidney disease, asthma, or had a stroke
- you are taking a diuretic
- you have problems or serious side effects from taking pain relievers or fever reducers

**Ask a doctor or pharmacist before use if you are**

- under a doctor's care for any serious condition
- taking aspirin for heart attack or stroke, because naproxen may decrease this benefit of aspirin
- taking any other drug

**When using this product**

- take with food or milk if stomach upset occurs

**Stop use and ask a doctor if**

- you experience any of the following signs of stomach bleeding:
  - feel faint
  - vomit blood
  - have bloody or black stools
  - have stomach pain that does not get better
- you have symptoms of heart problems or stroke:
  - chest pain
  - trouble breathing
  - weakness in one part or side of body
  - slurred speech
- leg swelling
- pain gets worse or lasts more than 10 days
- fever gets worse or lasts more than 3 days
- you have difficulty swallowing
- it feels like the capsule is stuck in your throat
- redness or swelling is present in the painful area
- any new symptoms appear

**If pregnant or breast feeding**, ask a health professional before use. It is especially important not to use naproxen sodium during the last 3 months of pregnancy unless definitely directed to do so by a doctor because it may cause problems in the unborn child or complications during delivery.

**Keep out of reach of children.** In case of overdose, get medical help or contact a Poison Control Center right away.

**Drug Facts (continued)**

**Directions**

- do not take more than directed
- the smallest effective dose should be used
- drink a full glass of water with each dose
- if taken with food, this product may take longer to work

under 12 years ask a doctor

adults and children 12 years and older

- take 1 capsule every 8 hours to 12 hours while symptoms last
- for the first dose you may take 2 capsules within the first hour
- do not exceed 2 capsules in any 8-hour to 12-hour period
- do not exceed 3 capsules in a 24-hour period

**Other information**

- each capsule contains: sodium 20 mg
- store at 20° to 25°C (68° to 77°F). Avoid high humidity and excessive heat above 40°C (104°F). Protect from light.
- read all directions and warnings before use. Keep carton.

**Inactive ingredients**

FD&C blue #1, gelatin, glycerin, lactic acid, mannitol, pharmaceutical ink, polyethylene glycol, povidone, propylene glycol, purified water, sorbitan, sorbitol

**Questions or comments?**  
call to 1-free 1 888 235 2466 (Mon - Fri 9AM - 5PM EST)

Manufactured for:  
**BIONPHARMA**  
600 Alexander Road,  
Princeton, NJ 08540

L0000000  
R0220

**Drug Facts**

**Active ingredient (in each capsule)** **Purposes**

Naproxen sodium 220 mg  
(naproxen 200 mg) (NSAID) \* Pain reliever/fever reducer  
\*nonsteroidal anti-inflammatory drug

**Uses**

- temporarily relieves minor aches and pains due to:
  - menstrual cramps
  - muscular aches
  - headache
  - backache
  - minor pain of arthritis
  - soothache
  - the common cold
- temporarily reduces fever

**Warnings**

**Allergy alert:** Naproxen sodium may cause a severe allergic reaction, especially in people allergic to aspirin. Symptoms may include:

- facial swelling
- asthma (wheezing)
- shock
- skin reddening
- rash
- blisters

If an allergic reaction occurs, stop use and seek medical help right away.

**Stomach bleeding warning:** This product contains an NSAID, which may cause severe stomach bleeding. The chance is higher if you:

- are age 60 or older
- have had stomach ulcers or bleeding problems
- take a blood thinning (anticoagulant) or steroid drug
- take other drugs containing prescription or nonprescription NSAIDs (aspirin, ibuprofen, naproxen, or others)
- have 3 or more alcoholic drinks every day while using this product
- take more or for a longer time than directed

**Heart attack and stroke warning:** NSAIDs, except aspirin, increase the risk of heart attack, heart failure, and stroke. These can be fatal. The risk is higher if you use more than directed or for longer than directed.

Do not use if ruptured safety seal under cap is torn or missing.

naproxen sodium capsules, 220 mg (NSAID)  
pain reliever/fever reducer

Actual Size  
NPI  
80 capsules\*\*  
liquid-filled capsule

naproxen sodium capsules, 220 mg (NSAID)  
pain reliever/fever reducer

12 hour menstrual pain relief

\*\*\*compare to the active ingredient in Menstrido!™

temporarily relieves minor cramps, backache, and headache

\*\*\*This product is not manufactured or distributed by the owners of Menstrido!™



Lot No:  
Exp. Date:

BIONPHARMA	
Labeling Format Information:	
<b>Fonts:</b> Helvetica Condensed Bold, Helvetica Condensed, Helvetica Condensed Bold Oblique Georgia	
<b>Drug Facts:</b>	8pt
<b>Header:</b>	7pt
<b>Subheader:</b>	6pt
<b>Body Text:</b>	6pt
<b>Drug Facts (continued):</b>	7pt
<b>Leading:</b>	7pt
<b>Bullets:</b>	5pt
<b>Barlines:</b>	0.6pt
<b>Hairlines:</b>	0.2pt
Horizontal Scale: 100%      Average Kerning: 0%	



BIONPHARMA	
Labeling Format Information:	
Fonts: Helvetica Condensed Bold, Helvetica Condensed, Helvetica Condensed Bold Oblique Georgia	
Drug Facts:	8pt
Header:	7pt
Subheader:	6pt
Body Text:	6pt
Drug Facts (continued):	7pt
Leading:	7pt
Bullets:	5pt
Barlines:	0.6pt
Hairlines:	0.2pt
Horizontal Scale: 100% Average Kerning: 0%	



.125" corner radius


**Front**

NDC 69452-269-20

**naproxen sodium capsules, 220 mg (NSAID)**  
pain reliever/fever reducer

**12 hour back & muscle pain relief**

Actual Size



**100 capsules\*\***  
\*\*liquid-filled capsule

**for temporary relief of minor back and muscle aches and pains**


**Do not use if printed safety seal under cap is torn or missing.**

**Drug Facts**

**Active ingredient (in each capsule)**  
Naproxen sodium 220 mg (naproxen 200 mg) (NSAID)\* ..... Pain reliever/fever reducer  
\*nonsteroidal anti-inflammatory drug

**Purposes**  
● temporarily relieves minor aches and pains due to:  
● backache ● muscular aches ● minor pain of arthritis ● menstrual cramps ● headache  
● toothache ● the common cold  
● temporarily reduces fever

**Warnings**  
**Allergy alert:** Naproxen sodium may cause a severe allergic reaction, especially in people allergic to aspirin. Symptoms may include: ● hives ● facial swelling ● asthma (wheezing) ● shock  
● skin redness ● rash ● blisters  
If an allergic reaction occurs, stop use and seek medical help right away.  
**Stomach bleeding warning:** This product contains an NSAID, which may cause severe stomach bleeding. The chance is higher if you: ● are age 60 or older ● have had stomach ulcers or bleeding problems ● take a blood thinning (anticoagulant) or steroid drug ● take other drugs containing prescription or nonprescription NSAIDs (aspirin, ibuprofen, naproxen, or others) ● have 3 or more alcoholic drinks every day while using this product ● take more or for a longer time than directed  
**Heart attack and stroke warning:** NSAIDs, except aspirin, increase the risk of heart attack, heart failure, and stroke. These can be fatal. The risk is higher if you use more than directed or for longer than directed.  
**Do not use** ● if you have ever had an allergic reaction to any other pain reliever/fever reducer ● right before or after heart surgery



3 69452 26920 6  
LO09090 RB220

Manufactured for:  
**BIONPHARMA**  
600 Abraham Road  
Princeton, NJ 08540  
LotEXP

**Non Varnish Area**

**FREE HERE**

6.00"

**Back**

2.375"

**Drug Facts (continued)**

**Ask a doctor before use if:** ● the stomach bleeding warning applies to you ● you have a history of stomach problems, such as heartburn ● you have high blood pressure, heart disease, liver cirrhosis, kidney disease, asthma, or had a stroke ● you are taking a diuretic ● you have problems or serious side effects from taking pain relievers or fever reducers

**Ask a doctor or pharmacist before use if you are:** ● under a doctor's care for any serious condition ● taking aspirin for heart attack or stroke, because naproxen may decrease the benefit of aspirin ● taking any other drug

**When using this product:** ● take with food or milk if stomach upset occurs

**Stop use and ask a doctor if:** ● you experience any of the following signs of stomach bleeding:  
● feel faint ● vomit blood ● have bloody or black stools ● have stomach pain that does not get better ● you have symptoms of heart problems or stroke

**Stop use and ask a doctor if:** ● chest pain ● trouble breathing ● weakness in one part or side of body ● numbness or tingling in the face, arms, or legs ● you have difficulty swallowing ● if it feels like the capsule is stuck in your throat ● redness or swelling is present in the painful area

**If pregnant or breast-feeding,** ask a health professional before use. It is especially important not to use naproxen sodium during the last 3 months of pregnancy unless definitely directed to do so by a doctor because it may cause problems in the unborn child or complications during delivery.  
**Keep out of reach of children.** In case of overdose, get medical help or contact a Poison Control Center right away.

**Directions** ● do not take more than directed ● the smallest effective dose should be used ● drink a full glass of water with each dose  
● taken with food, this product may take longer to work  
Adults and children ● take 1 capsule every 8 hours to 12 hours while symptoms last ● for the first dose you may take 2 capsules within the first hour ● do not exceed 2 capsules in any 6-hour to 12-hour period ● do not exceed 3 capsules in a 24-hour period

Children under 12 years ● ask a doctor

**Other information** ● each capsule contains sodium 20 mg ● store at 20° to 25° (68° to 77°). Avoid high humidity and excessive heat above 40°C (104°F). ● Protect from light. ● read all directions and warnings before use.

**Inactive ingredients:** FD&C blue #1, gelatin, glycerin, lactic acid, mannitol, pharmaceutical ink, polyethylene glycol, povidone, propylene glycol, purified water, sorbitol, sorbitol

**Questions or comments?**  
call toll-free 1-888-235-2466 (Mon - Fri 9AM - 5PM EST)

6.00"

<b>BIONPHARMA</b>			
<b>Labeling Format Information:</b>			
<b>Fonts:</b> Helvetica Condensed Bold, Helvetica Condensed, Helvetica Condensed Bold Oblique Georgia			
<b>Drug Facts:</b>	8pt	<b>Leading:</b>	5pt
<b>Header:</b>	7pt	<b>Bullets:</b>	5pt
<b>Subheader:</b>	6pt	<b>Barlines:</b>	0.6pt
<b>Body Text:</b>	6pt	<b>Hairlines:</b>	0.2pt
<b>Drug Facts (continued):</b>	7pt		
Horizontal Scale: 100%		Average Kerning: 0%	

.125" corner radius

**Front**

2.375"

\*\*\*Compare to the active ingredient in  
**ALEVE® BACK & MUSCLE PAIN**

NDC 69452-269-20

**naproxen sodium capsules, 220 mg (NSAID)**  
pain reliever/fever reducer

**12 hour back & muscle pain relief**

NP1

Actual Size

for temporary relief of  
minor back and muscle  
aches and pains

100 capsules\*\*

\*\*liquid-filled capsule

Do not use if printed safety seal under cap is torn or missing.

6.00"

**Drug Facts**

**Active ingredient (in each capsule)** Naproxen sodium 220 mg (naproxen 200 mg) (NSAID)\* ..... Pain reliever/fever reducer  
\*nonsteroidal anti-inflammatory drug

**Purposes**

**Uses** ● temporarily relieves minor aches and pains due to:  
● backache ● muscular aches ● minor pain of arthritis ● menstrual cramps ● headache  
● toothache ● the common cold  
● temporarily reduces fever

**Warnings**

**Allergy alert:** Naproxen sodium may cause a severe allergic reaction, especially in people allergic to aspirin. Symptoms may include: ● hives ● facial swelling ● asthma (wheezing) ● shock  
● skin redness ● rash ● blisters

If an allergic reaction occurs, stop use and seek medical help right away.

**Stomach bleeding warning:** This product contains an NSAID, which may cause severe stomach bleeding. The chance is higher if you: ● are age 60 or older ● have had stomach ulcers or bleeding problems ● take a blood thinning (anticoagulant) or steroid drug ● take other drugs containing prescription or nonprescription NSAIDs (aspirin, ibuprofen, naproxen, or others) ● have 3 or more alcoholic drinks every day while using this product ● take more or for a longer time than directed

**Heart attack and stroke warning:** NSAIDs, except aspirin, increase the risk of heart attack, heart failure, and stroke. These can be fatal. The risk is higher if you use more than directed or for longer than directed.

**Do not use** ● if you have ever had an allergic reaction to any other pain reliever/fever reducer ● right before or after heart surgery

\*\*\*This product is not manufactured or distributed by the name of ALEVE Back & Muscle Pain.

Manufactured for:  
**BIONPHARMA**  
600 Abraham Road  
Princeton, NJ 08540  
LotEXP  
L090900 - RG220

3 0 9 4 2 2 2 9 2 0 9

Non Varnish Area

FREE HERE

**Back**

2.375"

**Drug Facts (continued)**

**Ask a doctor before use if:** ● the stomach bleeding warning applies to you ● you have a history of stomach problems, such as heartburn ● you have high blood pressure, heart disease, liver cirrhosis, kidney disease, asthma, or had a stroke ● you are taking a diuretic ● you have problems or serious side effects from taking pain relievers or fever reducers

**Ask a doctor or pharmacist before use if you are:** ● under a doctor's care for any serious condition ● taking aspirin for heart attack or stroke, because naproxen may decrease the benefit of aspirin ● taking any other drug

**When using this product:** ● take with food or milk if stomach upset occurs

**Stop use and ask a doctor if:** ● you experience any of the following signs of stomach bleeding:  
● feel faint ● vomit blood ● have bloody or black stools ● have stomach pain that does not get better ● you have symptoms of heart problems or stroke

**Stop use and ask a doctor if:** ● chest pain ● trouble breathing ● weakness in one part or side of body ● numbness or tingling in the face, arms, or legs ● you have difficulty swallowing ● if feels like the capsule is stuck in your throat ● redness or swelling is present in the painful area

**If pregnant or breast-feeding,** ask a health professional before use. It is especially important not to use naproxen sodium during the last 3 months of pregnancy unless definitely directed to do so by a doctor because it may cause problems in the unborn child or complications during delivery.

**Keep out of reach of children.** In case of overdose, get medical help or contact a Poison Control Center right away.

**Directions** ● do not take more than directed ● the smallest effective dose should be used ● drink a full glass of water with each dose

● taken with food, this product may take longer to work

**Adults and children** ● take 1 capsule every 8 hours to 12 hours while symptoms last ● for the first dose you may take 2 capsules within the first hour

**12 years and older** ● do not exceed 2 capsules in any 6-hour to 12-hour period ● do not exceed 3 capsules in a 24-hour period

**Children under 12 years** ● ask a doctor

**Other information** ● each capsule contains sodium 20 mg ● store at 20° to 25° (68° to 77°). Avoid high humidity and excessive heat above 40°C (104°F). ● Protect from light. ● read all directions and warnings before use.

**Inactive ingredients:** FD&C blue #1, gelatin, glycerin, lactic acid, mannitol, pharmaceutical ink, polyethylene glycol, povidone, propylene glycol, purified water, sorbitol, sorbitol

**Questions or comments?**  
call toll-free 1-888-235-2466 (Mon - Fri 9AM - 5PM EST)

6.00"

<b>BIONPHARMA</b> <b>Labeling Format Information:</b>			
<b>Fonts:</b> Helvetica Condensed Bold, Helvetica Condensed, Helvetica Condensed Bold Oblique Georgia			
<b>Drug Facts:</b>	8pt	<b>Leading:</b>	5pt
<b>Header:</b>	7pt	<b>Bullets:</b>	5pt
<b>Subheader:</b>	6pt	<b>Barlines:</b>	0.6pt
<b>Body Text:</b>	6pt	<b>Hairlines:</b>	0.2pt
<b>Drug Facts (continued):</b>	7pt		
Horizontal Scale: 100%		Average Kerning: 0%	

Reference ID: 4601010

-----  
**This is a representation of an electronic record that was signed electronically. Following this are manifestations of any and all electronic signatures for this electronic record.**  
-----

/s/  
-----

NUSHIN F TODD  
04/30/2020 03:05:23 PM