

## HIGHLIGHTS OF PRESCRIBING INFORMATION

These highlights do not include all the information needed to use SPRYCEL safely and effectively. See full prescribing information for SPRYCEL.

### SPRYCEL® (dasatinib) Tablet for Oral Use

Initial U.S. Approval: 2006

#### INDICATIONS AND USAGE

SPRYCEL is a kinase inhibitor indicated for the treatment of

- newly diagnosed adults with Philadelphia chromosome-positive (Ph+) chronic myeloid leukemia (CML) in chronic phase. The trial is ongoing and further data will be required to determine long-term outcome. (1, 14)
- adults with chronic, accelerated, or myeloid or lymphoid blast phase Ph+ CML with resistance or intolerance to prior therapy including imatinib. (1, 14)
- adults with Philadelphia chromosome-positive acute lymphoblastic leukemia (Ph+ ALL) with resistance or intolerance to prior therapy. (1, 14)

#### DOSAGE AND ADMINISTRATION

- Chronic phase CML: 100 mg once daily. (2)
- Accelerated phase CML, myeloid or lymphoid blast phase CML, or Ph+ ALL: 140 mg once daily. (2)

Administer orally, with or without a meal. Do not crush or cut. (2)

#### DOSAGE FORMS AND STRENGTHS

Tablets: 20 mg, 50 mg, 70 mg, 80 mg, 100 mg, and 140 mg. (3, 16)

#### CONTRAINDICATIONS

None. (4)

#### WARNINGS AND PRECAUTIONS

- Myelosuppression and Bleeding Events:** Severe thrombocytopenia, neutropenia, and anemia may occur. Use caution if used concomitantly with medications that inhibit platelet function or anticoagulants. Monitor complete blood counts regularly. Transfuse and interrupt SPRYCEL when indicated. (2.3, 5.1, 5.2, 6.1)
- Fluid Retention:** Fluid retention, sometimes severe, including ascites, edema, and pleural and pericardial effusions. Manage with appropriate supportive care measures. (5.3, 6.1)
- QT Prolongation:** Use SPRYCEL with caution in patients who have or may develop prolongation of the QT interval. (5.4)

- Cardiac Dysfunction:** Monitor patients for signs or symptoms and treat appropriately. (5.5, 6.1)
- Pulmonary Arterial Hypertension (PAH):** SPRYCEL may increase the risk of developing PAH which may be reversible on discontinuation. Consider baseline risk and evaluate patients for signs and symptoms of PAH during treatment. Stop SPRYCEL if PAH is confirmed. (5.6)
- Embryo-fetal Toxicity:** SPRYCEL can cause fetal harm. Advise females of the potential risk to the fetus (5.7, 8.1, 8.8)

#### ADVERSE REACTIONS

Most common adverse reactions ( $\geq 15\%$ ) in patients with newly diagnosed chronic phase CML included myelosuppression, fluid retention, and diarrhea. Most common adverse reactions ( $\geq 20\%$ ) in patients with resistance or intolerance to prior imatinib therapy included myelosuppression, fluid retention events, diarrhea, headache, dyspnea, skin rash, fatigue, nausea, and hemorrhage. (6)

To report SUSPECTED ADVERSE REACTIONS, contact Bristol-Myers Squibb at 1-800-721-5072 or FDA at 1-800-FDA-1088 or [www.fda.gov/medwatch](http://www.fda.gov/medwatch).

#### DRUG INTERACTIONS

- CYP3A4 Inhibitors:** May increase dasatinib drug levels and should be avoided. If coadministration cannot be avoided, monitor closely and consider reducing SPRYCEL dose. (2.1, 7.1)
- CYP3A4 Inducers:** May decrease dasatinib drug levels. If coadministration cannot be avoided, consider increasing SPRYCEL dose. (2.1, 7.2)
- Antacids:** May decrease dasatinib drug levels. Avoid simultaneous administration. If needed, administer the antacid at least 2 hours prior to or 2 hours after the dose of SPRYCEL. (7.2)
- H<sub>2</sub> Antagonists/Proton Pump Inhibitors:** May decrease dasatinib drug levels. Consider antacids in place of H<sub>2</sub> antagonists or proton pump inhibitors. (7.2)

#### USE IN SPECIFIC POPULATIONS

**Nursing Mothers:** Discontinue drug or nursing taking into consideration importance of the drug to the mother. (8.3)

**Hepatic Impairment:** Use SPRYCEL with caution in patients with hepatic impairment. (8.6)

See 17 for PATIENT COUNSELING INFORMATION and FDA-approved patient labeling.

Revised: 04/2014

## FULL PRESCRIBING INFORMATION: CONTENTS\*

1	INDICATIONS AND USAGE	8.6	Hepatic Impairment
2	DOSAGE AND ADMINISTRATION	8.7	Renal Impairment
2.1	Dose Modification	8.8	Females of Reproductive Potential
2.2	Dose Escalation	10	OVERDOSAGE
2.3	Dose Adjustment for Adverse Reactions	11	DESCRIPTION
3	DOSAGE FORMS AND STRENGTHS	12	CLINICAL PHARMACOLOGY
4	CONTRAINDICATIONS	12.1	Mechanism of Action
5	WARNINGS AND PRECAUTIONS	12.3	Pharmacokinetics
5.1	Myelosuppression	13	NONCLINICAL TOXICOLOGY
5.2	Bleeding Related Events	13.1	Carcinogenesis, Mutagenesis, Impairment of Fertility
5.3	Fluid Retention	14	CLINICAL STUDIES
5.4	QT Prolongation	14.1	Newly Diagnosed Chronic Phase CML
5.5	Congestive Heart Failure, Left Ventricular Dysfunction, and Myocardial Infarction	14.2	Imatinib-resistant or Intolerant CML or Ph+ ALL
5.6	Pulmonary Arterial Hypertension	16	HOW SUPPLIED/STORAGE AND HANDLING
5.7	Embryo-fetal Toxicity	16.1	How Supplied
6	ADVERSE REACTIONS	16.2	Storage
6.1	Chronic Myeloid Leukemia (CML)	16.3	Handling and Disposal
6.2	Philadelphia Chromosome-Positive Acute Lymphoblastic Leukemia (Ph+ ALL)	17	PATIENT COUNSELING INFORMATION
6.3	Additional Data From Clinical Trials	17.1	Bleeding
6.4	Postmarketing Experience	17.2	Myelosuppression
7	DRUG INTERACTIONS	17.3	Fluid Retention
7.1	Drugs That May Increase Dasatinib Plasma Concentrations	17.4	Embryo-fetal Toxicity
7.2	Drugs That May Decrease Dasatinib Plasma Concentrations	17.5	Gastrointestinal Complaints
7.3	Drugs That May Have Their Plasma Concentration Altered By Dasatinib	17.6	Pain
8	USE IN SPECIFIC POPULATIONS	17.7	Fatigue
8.1	Pregnancy	17.8	Rash
8.3	Nursing Mothers	17.9	Lactose
8.4	Pediatric Use	17.10	Missed Dose
8.5	Geriatric Use		

\* Sections or subsections omitted from the full prescribing information are not listed.

## FULL PRESCRIBING INFORMATION

### 1 INDICATIONS AND USAGE

SPRYCEL<sup>®</sup> (dasatinib) is indicated for the treatment of adults with

- newly diagnosed Philadelphia chromosome-positive (Ph+) chronic myeloid leukemia (CML) in chronic phase. The effectiveness of SPRYCEL is based on cytogenetic response and major molecular response rates [see *Clinical Studies (14.1)*]. The trial is ongoing and further data will be required to determine long-term outcome.
- chronic, accelerated, or myeloid or lymphoid blast phase Ph+ CML with resistance or intolerance to prior therapy including imatinib.
- Philadelphia chromosome-positive acute lymphoblastic leukemia (Ph+ ALL) with resistance or intolerance to prior therapy.

### 2 DOSAGE AND ADMINISTRATION

The recommended starting dosage of SPRYCEL for chronic phase CML is 100 mg administered orally once daily. The recommended starting dosage of SPRYCEL for accelerated phase CML, myeloid or lymphoid blast phase CML, or Ph+ ALL is 140 mg administered orally once daily. Tablets should not be crushed or cut; they should be swallowed whole. SPRYCEL can be taken with or without a meal, either in the morning or in the evening.

In clinical studies, treatment with SPRYCEL was continued until disease progression or until no longer tolerated by the patient. The effect of stopping treatment after the achievement of a complete cytogenetic response (CCyR) has not been investigated.

#### 2.1 Dose Modification

**Concomitant Strong CYP3A4 inducers:** The use of concomitant strong CYP3A4 inducers may decrease dasatinib plasma concentrations and should be avoided (eg, dexamethasone, phenytoin, carbamazepine, rifampin, rifabutin, phenobarbital). St. John's Wort may decrease dasatinib plasma concentrations unpredictably and should be avoided. If patients must be coadministered a strong CYP3A4 inducer, based on pharmacokinetic studies, a SPRYCEL dose increase should be considered. If the dose of SPRYCEL is increased, the patient should be monitored carefully for toxicity [see *Drug Interactions (7.2)*].

**Concomitant Strong CYP3A4 inhibitors:** CYP3A4 inhibitors (eg, ketoconazole, itraconazole, clarithromycin, atazanavir, indinavir, nefazodone, nelfinavir, ritonavir, saquinavir, telithromycin,

and voriconazole) may increase dasatinib plasma concentrations. Grapefruit juice may also increase plasma concentrations of dasatinib and should be avoided.

Selection of an alternate concomitant medication with no or minimal enzyme inhibition potential, if possible, is recommended. If SPRYCEL must be administered with a strong CYP3A4 inhibitor, a dose decrease should be considered. Based on pharmacokinetic studies, a dose decrease to 20 mg daily should be considered for patients taking SPRYCEL 100 mg daily. For patients taking SPRYCEL 140 mg daily, a dose decrease to 40 mg daily should be considered. These reduced doses of SPRYCEL are predicted to adjust the area under the curve (AUC) to the range observed without CYP3A4 inhibitors. However, there are no clinical data with these dose adjustments in patients receiving strong CYP3A4 inhibitors. If SPRYCEL is not tolerated after dose reduction, either the strong CYP3A4 inhibitor must be discontinued, or SPRYCEL should be stopped until treatment with the inhibitor has ceased. When the strong inhibitor is discontinued, a washout period of approximately 1 week should be allowed before the SPRYCEL dose is increased. [See *Drug Interactions (7.1)*.]

## **2.2 Dose Escalation**

In clinical studies of adult CML and Ph+ ALL patients, dose escalation to 140 mg once daily (chronic phase CML) or 180 mg once daily (advanced phase CML and Ph+ ALL) was allowed in patients who did not achieve a hematologic or cytogenetic response at the recommended starting dosage.

## **2.3 Dose Adjustment for Adverse Reactions**

### **Myelosuppression**

In clinical studies, myelosuppression was managed by dose interruption, dose reduction, or discontinuation of study therapy. Hematopoietic growth factor has been used in patients with resistant myelosuppression. Guidelines for dose modifications are summarized in Table 1.

**Table 1: Dose Adjustments for Neutropenia and Thrombocytopenia**

Chronic Phase CML (starting dose 100 mg once daily)	ANC* $<0.5 \times 10^9/L$ or Platelets $<50 \times 10^9/L$	<ol style="list-style-type: none"> <li>1. Stop SPRYCEL until ANC <math>\geq 1.0 \times 10^9/L</math> and platelets <math>\geq 50 \times 10^9/L</math>.</li> <li>2. Resume treatment with SPRYCEL at the original starting dose if recovery occurs in <math>\leq 7</math> days.</li> <li>3. If platelets <math>&lt; 25 \times 10^9/L</math> or recurrence of ANC <math>&lt; 0.5 \times 10^9/L</math> for <math>&gt; 7</math> days, repeat Step 1 and resume SPRYCEL at a reduced dose of 80 mg once daily for second episode. For third episode, further reduce dose to 50 mg once daily (for newly diagnosed patients) or discontinue SPRYCEL (for patients resistant or intolerant to prior therapy including imatinib).</li> </ol>
Accelerated Phase CML, Blast Phase CML and Ph+ ALL (starting dose 140 mg once daily)	ANC* $< 0.5 \times 10^9/L$ or Platelets $< 10 \times 10^9/L$	<ol style="list-style-type: none"> <li>1. Check if cytopenia is related to leukemia (marrow aspirate or biopsy).</li> <li>2. If cytopenia is unrelated to leukemia, stop SPRYCEL until ANC <math>\geq 1.0 \times 10^9/L</math> and platelets <math>\geq 20 \times 10^9/L</math> and resume at the original starting dose.</li> <li>3. If recurrence of cytopenia, repeat Step 1 and resume SPRYCEL at a reduced dose of 100 mg once daily (second episode) or 80 mg once daily (third episode).</li> <li>4. If cytopenia is related to leukemia, consider dose escalation to 180 mg once daily.</li> </ol>

\*ANC: absolute neutrophil count

### Non-hematological adverse reactions

If a severe non-hematological adverse reaction develops with SPRYCEL use, treatment must be withheld until the event has resolved or improved. Thereafter, treatment can be resumed as appropriate at a reduced dose depending on the initial severity of the event.

### 3 DOSAGE FORMS AND STRENGTHS

SPRYCEL (dasatinib) Tablets are available as 20-mg, 50-mg, 70-mg, 80-mg, 100-mg, and 140-mg white to off-white, biconvex, film-coated tablets. [See How Supplied (16.1).]

### 4 CONTRAINDICATIONS

None.

## 5 WARNINGS AND PRECAUTIONS

### 5.1 Myelosuppression

Treatment with SPRYCEL is associated with severe (NCI CTC Grade 3 or 4) thrombocytopenia, neutropenia, and anemia. Their occurrence is more frequent in patients with advanced phase CML or Ph+ ALL than in chronic phase CML. In a dose-optimization trial in patients with resistance or intolerance to prior imatinib therapy and chronic phase CML, Grade 3 or 4 myelosuppression was reported less frequently in patients treated with 100 mg once daily than in patients treated with other dosing regimens.

Perform complete blood counts weekly for the first 2 months and then monthly thereafter, or as clinically indicated. Myelosuppression was generally reversible and usually managed by withholding SPRYCEL temporarily or dose reduction [*see Dosage and Administration (2.3) and Adverse Reactions (6.1)*].

### 5.2 Bleeding Related Events

In addition to causing thrombocytopenia in human subjects, dasatinib caused platelet dysfunction *in vitro*. In all clinical studies, severe central nervous system (CNS) hemorrhages, including fatalities, occurred in 1% of patients receiving SPRYCEL. Severe gastrointestinal hemorrhage, including fatalities, occurred in 4% of patients and generally required treatment interruptions and transfusions. Other cases of severe hemorrhage occurred in 2% of patients. Most bleeding events were associated with severe thrombocytopenia.

Patients were excluded from participation in initial SPRYCEL clinical studies if they took medications that inhibit platelet function or anticoagulants. In subsequent trials, the use of anticoagulants, aspirin, and non-steroidal anti-inflammatory drugs (NSAIDs) was allowed concurrently with SPRYCEL if the platelet count was >50,000–75,000 per microliter. Exercise caution if patients are required to take medications that inhibit platelet function or anticoagulants.

### 5.3 Fluid Retention

SPRYCEL is associated with fluid retention. In clinical trials, severe fluid retention was reported in up to 10% of patients. Severe ascites, pulmonary edema, and generalized edema were each reported in ≤1% of patients. Patients who develop symptoms suggestive of pleural effusion, such as dyspnea or dry cough, should be evaluated by chest X-ray. Severe pleural effusion may require thoracentesis and oxygen therapy. Fluid retention events were typically managed by supportive care measures that include diuretics or short courses of steroids. In dose-optimization

studies, fluid retention events were reported less frequently with once daily dosing than with other dosing regimens.

## 5.4 QT Prolongation

*In vitro* data suggest that dasatinib has the potential to prolong cardiac ventricular repolarization (QT interval). Of the 2440 patients treated with SPRYCEL in clinical studies, 16 patients (1%) had QTc prolongation reported as an adverse reaction. Twenty-two patients (1%) experienced a QTcF >500 ms. In 865 patients with leukemia treated with SPRYCEL in five Phase 2 single-arm studies, the maximum mean changes in QTcF (90% upper bound CI) from baseline ranged from 7.0 ms to 13.4 ms.

Administer SPRYCEL with caution to patients who have or may develop prolongation of QTc. These include patients with hypokalemia or hypomagnesemia, patients with congenital long QT syndrome, patients taking anti-arrhythmic medicines or other medicinal products that lead to QT prolongation, and cumulative high-dose anthracycline therapy. Correct hypokalemia or hypomagnesemia prior to SPRYCEL administration.

## 5.5 Congestive Heart Failure, Left Ventricular Dysfunction, and Myocardial Infarction

Cardiac adverse reactions were reported in 7% of 258 patients taking SPRYCEL, including, 1.6% of patients with cardiomyopathy, heart failure congestive, diastolic dysfunction, fatal myocardial infarction, and left ventricular dysfunction. Monitor patients for signs or symptoms consistent with cardiac dysfunction and treat appropriately.

## 5.6 Pulmonary Arterial Hypertension

SPRYCEL may increase the risk of developing pulmonary arterial hypertension (PAH) which may occur any time after initiation, including after more than one year of treatment. Manifestations include dyspnea, fatigue, hypoxia, and fluid retention. PAH may be reversible on discontinuation of SPRYCEL. Evaluate patients for signs and symptoms of underlying cardiopulmonary disease prior to initiating SPRYCEL and during treatment. If PAH is confirmed, SPRYCEL should be permanently discontinued.

## 5.7 Embryo-fetal Toxicity

SPRYCEL can cause fetal harm when administered to a pregnant woman. Adverse fetal and infant outcomes have been reported from women who have taken SPRYCEL during pregnancy.

In animal reproduction studies, embryo-fetal toxicities, including skeletal malformations, were observed in rats and rabbits at plasma concentrations below those in humans receiving therapeutic doses of dasatinib. If SPRYCEL is used during pregnancy, or if the patient becomes pregnant while taking SPRYCEL, the patient should be apprised of the potential hazard to the fetus [see *Use in Specific Populations (8.1)*].

Advise females of reproductive potential to avoid pregnancy, which may include the use of contraception, during treatment with SPRYCEL, [see *Use in Specific Populations (8.8)*]

## 6 ADVERSE REACTIONS

The following adverse reactions are discussed in greater detail in other sections of the labeling:

- Myelosuppression [see *Dosage and Administration (2.3)* and *Warnings and Precautions (5.1)*].
- Bleeding related events [see *Warnings and Precautions (5.2)*].
- Fluid retention [see *Warnings and Precautions (5.3)*].
- QT prolongation [see *Warnings and Precautions (5.4)*].
- Congestive heart failure, left ventricular dysfunction, and myocardial infarction [see *Warnings and Precautions (5.5)*].
- Pulmonary Arterial Hypertension [see *Warnings and Precautions (5.6)*].

Because clinical trials are conducted under widely varying conditions, adverse reaction rates observed in the clinical trials of a drug cannot be directly compared to rates in the clinical trials of another drug and may not reflect the rates observed in practice.

The data described below reflect exposure to SPRYCEL in clinical studies including 258 patients with newly diagnosed chronic phase CML and in 2182 patients with imatinib resistant or intolerant CML or Ph+ ALL.

In the newly diagnosed chronic phase CML trial with a minimum of 36 months follow up and median duration of therapy of 37 months, the median average daily dose was 99 mg.

In the imatinib resistant or intolerant CML or Ph+ ALL clinical trials, 1520 patients had a minimum of 2 years follow up and 662 patients with chronic phase CML had a minimum of 60 months follow up (starting dosage 100 mg once daily, 140 mg once daily, 50 mg twice daily, or 70 mg twice daily). Among patients with chronic phase CML and resistance or intolerance to prior imatinib therapy, the median duration of treatment with SPRYCEL 100 mg once daily was 37 months (range 1–65 months). The median duration of treatment with SPRYCEL 140 mg once daily was 15 months (range 0.03–36 months) for accelerated phase CML, 3 months (range

0.03–29 months) for myeloid blast phase CML, and 3 months (range 0.1–10 months) for lymphoid blast CML.

The majority of SPRYCEL-treated patients experienced adverse reactions at some time. In the newly diagnosed chronic phase CML trial, drug was discontinued for adverse reactions in 6% of SPRYCEL-treated patients with a minimum of 12 months follow up. After a minimum of 36 months follow up, the cumulative discontinuation rate was 9%. Among patients with resistance or intolerance to prior imatinib therapy, the rates of discontinuation for adverse reactions at 2 years were 15% in chronic phase CML for all dosages, 16% in accelerated phase CML, 15% in myeloid blast phase CML, 8% in lymphoid blast phase CML, and 8% in Ph+ ALL. In a dose-optimization trial in patients with resistance or intolerance to prior imatinib therapy and chronic phase CML with a minimum of 60 months follow up, the rate of discontinuation for adverse reactions was 18% in patients treated with 100 mg once daily.

The most frequently reported adverse reactions reported in  $\geq 10\%$  of patients in newly diagnosed chronic phase CML included myelosuppression, fluid retention events (pleural effusion, superficial localized edema, generalized edema), diarrhea, headache, musculoskeletal pain, rash, and nausea. Pleural effusions were reported in 50 patients (see Table 2).

The most frequently reported adverse reactions reported in  $\geq 20\%$  of patients with resistance or intolerance to prior imatinib therapy included myelosuppression, fluid retention events, diarrhea, headache, dyspnea, skin rash, fatigue, nausea, and hemorrhage.

The most frequently reported serious adverse reactions in patients with newly diagnosed chronic phase CML included pleural effusion (4%), hemorrhage (2%), congestive heart failure (1%), pulmonary hypertension (1%), and pyrexia (1%). The most frequently reported serious adverse reactions in patients with resistance or intolerance to prior imatinib therapy included pleural effusion (11%), gastrointestinal bleeding (4%), febrile neutropenia (4%), dyspnea (3%), pneumonia (3%), pyrexia (3%), diarrhea (3%), infection (2%), congestive heart failure/cardiac dysfunction (2%), pericardial effusion (1%), and CNS hemorrhage (1%).

## 6.1 Chronic Myeloid Leukemia (CML)

Adverse reactions (excluding laboratory abnormalities) that were reported in at least 10% of patients are shown in Table 2 for newly diagnosed patients with chronic phase CML and Tables 3 and 4 for CML patients with resistance or intolerance to prior imatinib therapy.

**Table 2: Adverse Reactions Reported in ≥10% of Patients with Newly Diagnosed Chronic Phase CML (minimum of 36 months follow up)**

Preferred Term	All Grades		Grade 3/4	
	SPRYCEL (n=258)	Imatinib (n=258)	SPRYCEL (n=258)	Imatinib (n=258)
	Percent (%) of Patients			
Fluid retention	31	44	3	1
Pleural effusion	19	<1	2	0
Superficial localized edema	13	37	0	<1
Generalized edema	3	7	0	0
Congestive heart failure/ cardiac dysfunction <sup>a</sup>	2	1	<1	<1
Pericardial effusion	3	1	1	0
Pulmonary hypertension	2	0	<1	0
Pulmonary edema	1	0	0	0
Diarrhea	21	22	1	1
Headache	13	11	0	0
Musculoskeletal pain	13	17	0	<1
Rash <sup>b</sup>	13	18	0	2
Nausea	10	24	0	0
Fatigue	9	11	<1	0
Myalgia	6	12	0	0
Hemorrhage <sup>c</sup>	7	7	1	1
Gastrointestinal bleeding	2	1	1	0
Other bleeding <sup>d</sup>	6	5	0	1
CNS bleeding	0	<1	0	<1
Vomiting	5	11	0	0
Muscle spasms	5	21	0	<1

<sup>a</sup> Includes cardiac failure acute, cardiac failure congestive, cardiomyopathy, diastolic dysfunction, ejection fraction decreased, and left ventricular dysfunction.

<sup>b</sup> Includes erythema, erythema multiforme, rash, rash generalized, rash macular, rash papular, rash pustular, skin exfoliation, and rash vesicular.

<sup>c</sup> Adverse reaction of special interest with <10% frequency.

<sup>d</sup> Includes conjunctival hemorrhage, ear hemorrhage, ecchymosis, epistaxis, eye hemorrhage, gingival bleeding, hematoma, hematuria, hemoptysis, intra-abdominal hematoma, petechiae, scleral hemorrhage, uterine hemorrhage, and vaginal hemorrhage.

The cumulative rates of the majority of adverse reactions (all grades) in newly diagnosed patients with chronic phase CML were similar after 12 and 36 months minimum follow up including congestive heart failure/cardiac dysfunction (2% vs 2%), pericardial effusion (2% vs 3%), pulmonary edema (<1% vs 1%), gastrointestinal bleeding (2% vs 2%), diarrhea (18% vs 21%), and generalized edema (3% vs 3%). Cumulative adverse reaction rates (all grades) that increased between 12 months and 36 months minimum follow up included overall fluid retention (23% vs 31%), pleural effusion (12% vs 19%), and superficial edema (10% vs 13%). A total of 9 patients (3.5%) discontinued due to pleural effusion in the trial.

At 36 months, there were 17 deaths in the dasatinib-treated patients (6.6%) and 20 deaths in the imatinib-treated patients (7.7%); 1 in each group was judged by the investigator as related to study therapy.

**Table 3: Adverse Reactions Reported in ≥10% of Patients with Chronic Phase CML Resistant or Intolerant to Prior Imatinib Therapy (minimum of 60 months follow up)**

Preferred Term	100 mg Once Daily	
	Chronic (n=165)	
	All Grades	Grade 3/4
	Percent (%) of Patients	
Fluid retention	42	5
Superficial localized edema	21	0
Pleural effusion	24	4
Generalized edema	4	0
Pericardial effusion	2	1
Congestive heart failure/ cardiac dysfunction <sup>a</sup>	0	0
Pulmonary edema	0	0
Headache	33	1
Diarrhea	28	2
Fatigue	26	4
Dyspnea	24	2
Musculoskeletal pain	22	2
Nausea	18	1
Skin rash <sup>b</sup>	18	2
Myalgia	13	0
Arthralgia	12	1

**Table 3: Adverse Reactions Reported in ≥10% of Patients with Chronic Phase CML Resistant or Intolerant to Prior Imatinib Therapy (minimum of 60 months follow up)**

Preferred Term	100 mg Once Daily	
	Chronic (n=165)	
	All Grades	Grade 3/4
	Percent (%) of Patients	
Infection (including bacterial, viral, fungal, and non-specified)	13	1
Abdominal pain	12	1
Hemorrhage	11	1
Gastrointestinal bleeding	2	1
CNS bleeding	0	0
Pruritus	10	1
Pain	10	1

<sup>a</sup> Includes ventricular dysfunction, cardiac failure, cardiac failure congestive, cardiomyopathy, congestive cardiomyopathy, diastolic dysfunction, ejection fraction decreased, and ventricular failure.

<sup>b</sup> Includes drug eruption, erythema, erythema multiforme, erythrosis, exfoliative rash, generalized erythema, genital rash, heat rash, milia, rash, rash erythematous, rash follicular, rash generalized, rash macular, rash maculopapular, rash papular, rash pruritic, rash pustular, skin exfoliation, skin irritation, urticaria vesiculosa, and rash vesicular.

With a minimum follow up of 60 months (see Table 3), the cumulative rates of the majority of adverse reactions (all grades) in patients with chronic phase CML treated with a starting dose of 100 mg once daily were identical with a minimum follow up of 24 and 60 months including congestive heart failure/cardiac dysfunction, pericardial effusion, pulmonary edema, and gastrointestinal bleeding or similar for diarrhea (27% vs 28%), and generalized edema (3% vs 4%). Cumulative adverse reaction rates (all grades) that increased between 24 months and 60 months minimum follow up included: overall fluid retention (34% vs 42%), pleural effusion (18% vs 24%), and superficial edema (18% vs 21%). The cumulative rate of Grade 3 or 4 pleural effusion was 2% versus 4%, respectively.

**Table 4: Adverse Reactions Reported in ≥10% of Patients with Advanced Phase CML Resistant or Intolerant to Prior Imatinib Therapy**

Preferred Term	140 mg Once Daily					
	Accelerated (n=157)		Myeloid Blast (n=74)		Lymphoid Blast (n=33)	
	All Grades	Grade 3/4	All Grades	Grade 3/4	All Grades	Grade 3/4
	Percent (%) of Patients					
Fluid retention	35	8	34	7	21	6
Superficial localized edema	18	1	14	0	3	0
Pleural effusion	21	7	20	7	21	6
Generalized edema	1	0	3	0	0	0
Pericardial effusion	3	1	0	0	0	0
Congestive heart failure/ cardiac dysfunction <sup>a</sup>	0	0	4	0	0	0
Pulmonary edema	1	0	4	3	0	0
Headache	27	1	18	1	15	3
Diarrhea	31	3	20	5	18	0
Fatigue	19	2	20	1	9	3
Dyspnea	20	3	15	3	3	3
Musculoskeletal pain	11	0	8	1	0	0
Nausea	19	1	23	1	21	3
Skin rash <sup>b</sup>	15	0	16	1	21	0
Arthralgia	10	0	5	1	0	0
Infection (including bacterial, viral, fungal, and non-specified)	10	6	14	7	9	0
Hemorrhage	26	8	19	9	24	9
Gastrointestinal bleeding	8	6	9	7	9	3
CNS bleeding	1	1	0	0	3	3
Vomiting	11	1	12	0	15	0
Pyrexia	11	2	18	3	6	0
Febrile neutropenia	4	4	12	12	12	12

<sup>a</sup> Includes ventricular dysfunction, cardiac failure, cardiac failure congestive, cardiomyopathy, congestive cardiomyopathy, diastolic dysfunction, ejection fraction decreased, and ventricular failure.

<sup>b</sup> Includes drug eruption, erythema, erythema multiforme, erythrodermia, exfoliative rash, generalized erythema, genital rash, heat rash, milia, rash, rash erythematous, rash follicular, rash generalized, rash macular, rash maculopapular, rash papular, rash pruritic, rash pustular, skin exfoliation, skin irritation, urticaria vesiculosa, and rash vesicular.

## Laboratory Abnormalities

Myelosuppression was commonly reported in all patient populations. The frequency of Grade 3 or 4 neutropenia, thrombocytopenia, and anemia was higher in patients with advanced phase CML than in chronic phase CML (Tables 5 and 6). Myelosuppression was reported in patients with normal baseline laboratory values as well as in patients with pre-existing laboratory abnormalities.

In patients who experienced severe myelosuppression, recovery generally occurred following dose interruption or reduction; permanent discontinuation of treatment occurred in 2% of patients with newly diagnosed chronic phase CML and 5% of patients with resistance or intolerance to prior imatinib therapy [*see Warnings and Precautions (5.1)*].

Grade 3 or 4 elevations of transaminase or bilirubin and Grade 3 or 4 hypocalcemia, hypokalemia, and hypophosphatemia were reported in patients with all phases of CML but were reported with an increased frequency in patients with myeloid or lymphoid blast phase CML. Elevations in transaminase or bilirubin were usually managed with dose reduction or interruption. Patients developing Grade 3 or 4 hypocalcemia during the course of SPRYCEL therapy often had recovery with oral calcium supplementation.

Laboratory abnormalities reported in patients with newly diagnosed chronic phase CML are shown in Table 5. There were no discontinuations of SPRYCEL therapy in this patient population due to biochemical laboratory parameters.

**Table 5: CTC Grade 3/4 Laboratory Abnormalities in Patients with Newly Diagnosed Chronic Phase CML (minimum of 36 months follow up)**

	SPRYCEL (n=258)	Imatinib (n=258)
Percent (%) of Patients		
<b>Hematology Parameters</b>		
Neutropenia	24	21
Thrombocytopenia	19	11
Anemia	12	9
<b>Biochemistry Parameters</b>		
Hypophosphatemia	7	28
Hypokalemia	0	2
Hypocalcemia	3	2
Elevated SGPT (ALT)	<1	2
Elevated SGOT (AST)	<1	1
Elevated Bilirubin	1	0
Elevated Creatinine	1	1

CTC grades: neutropenia (Grade 3  $\geq 0.5$ – $<1.0 \times 10^9/L$ , Grade 4  $<0.5 \times 10^9/L$ ); thrombocytopenia (Grade 3  $\geq 25$ – $<50 \times 10^9/L$ , Grade 4  $<25 \times 10^9/L$ ); anemia (hemoglobin Grade 3  $\geq 65$ – $<80$  g/L, Grade 4  $<65$  g/L); elevated creatinine (Grade 3  $>3$ – $6 \times$  upper limit of normal range (ULN), Grade 4  $>6 \times$  ULN); elevated bilirubin (Grade 3  $>3$ – $10 \times$  ULN, Grade 4  $>10 \times$  ULN); elevated SGOT or SGPT (Grade 3  $>5$ – $20 \times$  ULN, Grade 4  $>20 \times$  ULN); hypocalcemia (Grade 3  $<7.0$ – $6.0$  mg/dL, Grade 4  $<6.0$  mg/dL); hypophosphatemia (Grade 3  $<2.0$ – $1.0$  mg/dL, Grade 4  $<1.0$  mg/dL); hypokalemia (Grade 3  $<3.0$ – $2.5$  mmol/L, Grade 4  $<2.5$  mmol/L).

Laboratory abnormalities reported in patients with CML resistant or intolerant to imatinib who received the recommended starting doses of SPRYCEL are shown by disease phase in Table 6.

**Table 6: CTC Grade 3/4 Laboratory Abnormalities in Clinical Studies of CML: Resistance or Intolerance to Prior Imatinib Therapy**

	Chronic Phase CML 100 mg Once Daily (n=165)	Advanced Phase CML 140 mg Once Daily		
		Accelerated Phase (n=157)	Myeloid Blast Phase (n=74)	Lymphoid Blast Phase (n=33)
Percent (%) of Patients				
<b>Hematology Parameters*</b>				
Neutropenia	36	58	77	79
Thrombocytopenia	24	63	78	85
Anemia	13	47	74	52

**Table 6: CTC Grade 3/4 Laboratory Abnormalities in Clinical Studies of CML: Resistance or Intolerance to Prior Imatinib Therapy**

Chronic Phase CML 100 mg Once Daily (n=165)	Advanced Phase CML 140 mg Once Daily		
	Accelerated Phase (n=157)	Myeloid Blast Phase (n=74)	Lymphoid Blast Phase (n=33)
<b>Percent (%) of Patients</b>			
<b>Biochemistry Parameters</b>			
Hypophosphatemia	10	13	12
Hypokalemia	2	7	11
Hypocalcemia	<1	4	9
Elevated SGPT (ALT)	0	2	5
Elevated SGOT (AST)	<1	0	4
Elevated Bilirubin	<1	1	3
Elevated Creatinine	0	2	8

CTC grades: neutropenia (Grade 3  $\geq 0.5$ – $< 1.0 \times 10^9/L$ , Grade 4  $< 0.5 \times 10^9/L$ ); thrombocytopenia (Grade 3  $\geq 25$ – $< 50 \times 10^9/L$ , Grade 4  $< 25 \times 10^9/L$ ); anemia (hemoglobin Grade 3  $\geq 65$ – $< 80$  g/L, Grade 4  $< 65$  g/L); elevated creatinine (Grade 3  $> 3$ – $6 \times$  upper limit of normal range (ULN), Grade 4  $> 6 \times$  ULN); elevated bilirubin (Grade 3  $> 3$ – $10 \times$  ULN, Grade 4  $> 10 \times$  ULN); elevated SGOT or SGPT (Grade 3  $> 5$ – $20 \times$  ULN, Grade 4  $> 20 \times$  ULN); hypocalcemia (Grade 3  $< 7.0$ – $6.0$  mg/dL, Grade 4  $< 6.0$  mg/dL); hypophosphatemia (Grade 3  $< 2.0$ – $1.0$  mg/dL, Grade 4  $< 1.0$  mg/dL); hypokalemia (Grade 3  $< 3.0$ – $2.5$  mmol/L, Grade 4  $< 2.5$  mmol/L).

\* Hematology parameters for 100 mg once daily dosing in chronic phase CML reflects 60 month minimum follow up.

Among chronic phase CML patients with resistance or intolerance to prior imatinib therapy, cumulative Grade 3 or 4 cytopenias were similar at 2 and 5 years including: neutropenia (36% vs 36%), thrombocytopenia (23% vs 24%), and anemia (13% vs 13%).

## 6.2 Philadelphia Chromosome-Positive Acute Lymphoblastic Leukemia (Ph+ ALL)

A total of 135 patients with Ph+ ALL were treated with SPRYCEL in clinical studies. The median duration of treatment was 3 months (range 0.03–31 months). The safety profile of patients with Ph+ ALL was similar to those with lymphoid blast phase CML. The most frequently reported adverse reactions included fluid retention events, such as pleural effusion (24%) and superficial edema (19%), and gastrointestinal disorders, such as diarrhea (31%), nausea (24%), and vomiting (16%). Hemorrhage (19%), pyrexia (17%), rash (16%), and dyspnea (16%) were also frequently reported. The most frequently reported serious adverse reactions included pleural effusion (11%), gastrointestinal bleeding (7%), febrile neutropenia (6%),

infection (5%), pyrexia (4%), pneumonia (3%), diarrhea (3%), nausea (2%), vomiting (2%), and colitis (2%).

### 6.3 Additional Data From Clinical Trials

The following adverse reactions were reported in patients in the SPRYCEL clinical studies at a frequency of  $\geq 10\%$ ,  $1\%<10\%$ ,  $0.1\%<1\%$ , or  $<0.1\%$ . These events are included on the basis of clinical relevance.

***Gastrointestinal Disorders:***  $1\%<10\%$  – mucosal inflammation (including mucositis/stomatitis), dyspepsia, abdominal distension, constipation, gastritis, colitis (including neutropenic colitis), oral soft tissue disorder;  $0.1\%<1\%$  – ascites, dysphagia, anal fissure, upper gastrointestinal ulcer, esophagitis, pancreatitis;  $<0.1\%$  – protein losing gastroenteropathy, ileus.

***General Disorders and Administration Site Conditions:***  $1\%<10\%$  – asthenia, pain, chest pain, chills;  $0.1\%<1\%$  – malaise, temperature intolerance.

***Skin and Subcutaneous Tissue Disorders:***  $1\%<10\%$  – pruritus, alopecia, acne, dry skin, hyperhidrosis, urticaria, dermatitis (including eczema);  $0.1\%<1\%$  – pigmentation disorder, skin ulcer, bullous conditions, photosensitivity, nail disorder, acute febrile neutrophilic dermatosis, panniculitis, palmar-plantar erythrodysesthesia syndrome.

***Respiratory, Thoracic, and Mediastinal Disorders:***  $\geq 10\%$  – cough;  $1\%<10\%$  – lung infiltration, pneumonitis, pulmonary hypertension;  $0.1\%<1\%$  – asthma, bronchospasm;  $<0.1\%$  – acute respiratory distress syndrome.

***Nervous System Disorders:***  $1\%<10\%$  – neuropathy (including peripheral neuropathy), dizziness, dysgeusia, somnolence;  $0.1\%<1\%$  – amnesia, tremor, syncope;  $<0.1\%$  – convulsion, cerebrovascular accident, transient ischemic attack, optic neuritis, VIIth nerve paralysis.

***Blood and Lymphatic System Disorders:***  $1\%<10\%$  – pancytopenia;  $<0.1\%$  – aplasia pure red cell.

***Musculoskeletal and Connective Tissue Disorders:***  $1\%<10\%$  – muscular weakness, musculoskeletal stiffness, muscle spasm;  $0.1\%<1\%$  – rhabdomyolysis, tendonitis, muscle inflammation.

***Investigations:***  $1\%<10\%$  – weight increased, weight decreased;  $0.1\%<1\%$  – blood creatine phosphokinase increased.

**Infections and Infestations:** 1%–<10% – pneumonia (including bacterial, viral, and fungal), upper respiratory tract infection/inflammation, herpes virus infection, enterocolitis infection, sepsis (including fatal outcomes [0.2%]).

**Metabolism and Nutrition Disorders:** 1%–<10% – anorexia, appetite disturbances, hyperuricemia; 0.1%–<1% – hypoalbuminemia.

**Cardiac Disorders:** 1%–<10% – arrhythmia (including tachycardia), palpitations; 0.1%–<1% – angina pectoris, cardiomegaly, pericarditis, ventricular arrhythmia (including ventricular tachycardia); <0.1% – cor pulmonale, myocarditis, acute coronary syndrome.

**Eye Disorders:** 1%–<10% – visual disorder (including visual disturbance, vision blurred, and visual acuity reduced), dry eye; 0.1%–<1% – conjunctivitis; <0.1% – visual impairment.

**Vascular Disorders:** 1%–<10% – flushing, hypertension; 0.1%–<1% – hypotension, thrombophlebitis; <0.1% – livedo reticularis.

**Psychiatric Disorders:** 1%–<10% – insomnia, depression; 0.1%–<1% – anxiety, affect lability, confusional state, libido decreased.

**Reproductive System and Breast Disorders:** 0.1%–<1% – gynecomastia, menstruation irregular.

**Injury, Poisoning, and Procedural Complications:** 1%–<10% – contusion.

**Ear and Labyrinth Disorders:** 1%–<10% – tinnitus; 0.1%–<1% – vertigo.

**Hepatobiliary Disorders:** 0.1%–<1% – cholestasis, cholecystitis, hepatitis.

**Renal and Urinary Disorders:** 0.1%–<1% – urinary frequency, renal failure, proteinuria.

**Neoplasms Benign, Malignant, and Unspecified:** 0.1%–<1% – tumor lysis syndrome.

**Immune System Disorders:** 0.1%–<1% – hypersensitivity (including erythema nodosum).

## 6.4 Postmarketing Experience

The following additional adverse reactions have been identified during post approval use of SPRYCEL. Because these reactions are reported voluntarily from a population of uncertain size, it is not always possible to reliably estimate their frequency or establish a causal relationship to drug exposure.

**Cardiac disorders:** atrial fibrillation/atrial flutter

**Vascular disorders:** thrombosis/embolism (including pulmonary embolism, deep vein thrombosis)

**Respiratory, thoracic, and mediastinal disorders:** interstitial lung disease, pulmonary arterial hypertension

## 7 DRUG INTERACTIONS

### 7.1 Drugs That May Increase Dasatinib Plasma Concentrations

**CYP3A4 Inhibitors:** Dasatinib is a CYP3A4 substrate. In a trial of 18 patients with solid tumors, 20-mg SPRYCEL once daily coadministered with 200 mg of ketoconazole twice daily increased the dasatinib  $C_{max}$  and AUC by four- and five-fold, respectively. Concomitant use of SPRYCEL and drugs that inhibit CYP3A4 may increase exposure to dasatinib and should be avoided. In patients receiving treatment with SPRYCEL, close monitoring for toxicity and a SPRYCEL dose reduction should be considered if systemic administration of a potent CYP3A4 inhibitor cannot be avoided [*see Dosage and Administration (2.1)*].

### 7.2 Drugs That May Decrease Dasatinib Plasma Concentrations

**CYP3A4 Inducers:** When a single morning dose of SPRYCEL was administered following 8 days of continuous evening administration of 600 mg of rifampin, a potent CYP3A4 inducer, the mean  $C_{max}$  and AUC of dasatinib were decreased by 81% and 82%, respectively. Alternative agents with less enzyme induction potential should be considered. If SPRYCEL must be administered with a CYP3A4 inducer, a dose increase in SPRYCEL should be considered [*see Dosage and Administration (2.1)*].

**Antacids:** Nonclinical data demonstrate that the solubility of dasatinib is pH dependent. In a trial of 24 healthy subjects, administration of 30 mL of aluminum hydroxide/magnesium hydroxide 2 hours prior to a single 50-mg dose of SPRYCEL was associated with no relevant change in dasatinib AUC; however, the dasatinib  $C_{max}$  increased 26%. When 30 mL of aluminum hydroxide/magnesium hydroxide was administered to the same subjects concomitantly with a 50-mg dose of SPRYCEL, a 55% reduction in dasatinib AUC and a 58% reduction in  $C_{max}$  were observed. Simultaneous administration of SPRYCEL with antacids should be avoided. If antacid therapy is needed, the antacid dose should be administered at least 2 hours prior to or 2 hours after the dose of SPRYCEL.

**H<sub>2</sub> Antagonists/Proton Pump Inhibitors:** Long-term suppression of gastric acid secretion by H<sub>2</sub> antagonists or proton pump inhibitors (eg, famotidine and omeprazole) is likely to reduce dasatinib exposure. In a trial of 24 healthy subjects, administration of a single 50-mg dose of SPRYCEL 10 hours following famotidine reduced the AUC and C<sub>max</sub> of dasatinib by 61% and 63%, respectively. In a trial of 14 healthy subjects, administration of a single 100-mg dose of SPRYCEL 22 hours following a 40-mg omeprazole dose at steady state reduced the AUC and C<sub>max</sub> of dasatinib by 43% and 42%, respectively. The concomitant use of H<sub>2</sub> antagonists or proton pump inhibitors with SPRYCEL is not recommended. The use of antacids (at least 2 hours prior to or 2 hours after the dose of SPRYCEL) should be considered in place of H<sub>2</sub> antagonists or proton pump inhibitors in patients receiving SPRYCEL therapy.

### **7.3 Drugs That May Have Their Plasma Concentration Altered By Dasatinib**

**CYP3A4 Substrates:** Single-dose data from a trial of 54 healthy subjects indicate that the mean C<sub>max</sub> and AUC of simvastatin, a CYP3A4 substrate, were increased by 37% and 20%, respectively, when simvastatin was administered in combination with a single 100-mg dose of SPRYCEL. Therefore, CYP3A4 substrates known to have a narrow therapeutic index such as alfentanil, astemizole, terfenadine, cisapride, cyclosporine, fentanyl, pimizide, quinidine, sirolimus, tacrolimus, or ergot alkaloids (ergotamine, dihydroergotamine) should be administered with caution in patients receiving SPRYCEL.

## **8 USE IN SPECIFIC POPULATIONS**

### **8.1 Pregnancy**

#### **Pregnancy Category D**

##### *Risk Summary*

SPRYCEL can cause fetal harm when administered to a pregnant woman. There are no studies with SPRYCEL in pregnant women. However, in animal reproduction studies, embryo-fetal toxicities, including skeletal malformations were observed at dasatinib doses producing plasma concentrations below those in humans receiving therapeutic doses of dasatinib. If SPRYCEL is used during pregnancy, or if the patient becomes pregnant while taking SPRYCEL, the patient should be apprised of the potential risk to the fetus [*see Warnings and Precautions (5.7)*].

Data

Based on human experience, dasatinib is suspected to cause congenital malformations including neural tube defects, and harmful pharmacological effects on the fetus when administered during pregnancy.

### *Clinical Considerations*

#### Fetal/Neonatal Adverse Reactions

Transplacental transfer of dasatinib has been reported. Dasatinib has been measured in fetal plasma and amniotic fluid and concentrations were found to be comparable to those in maternal plasma. Hydrops fetalis and fetal bicytopenia have been reported with maternal exposure to dasatinib. There have been other reports of maternal dasatinib exposure with no adverse fetal outcomes noted.

#### *Animal Data*

In nonclinical studies, at plasma concentrations below those observed in humans receiving therapeutic doses of dasatinib, embryo-fetal toxicities were observed in rats and rabbits. Fetal death was observed in rats. In both rats and rabbits, the lowest doses of dasatinib tested (rat: 2.5 mg/kg/day [15 mg/m<sup>2</sup>/day] and rabbit: 0.5 mg/kg/day [6 mg/m<sup>2</sup>/day]) resulted in embryo-fetal toxicities. These doses produced maternal AUCs of 105 ng•hr/mL and 44 ng•hr/mL (0.1-fold the human AUC) in rats and rabbits, respectively. Embryo-fetal toxicities included skeletal malformations at multiple sites (scapula, humerus, femur, radius, ribs, and clavicle), reduced ossification (sternum; thoracic, lumbar, and sacral vertebrae; forepaw phalanges; pelvis; and hyoid body), edema, and microhepatia. In a pre-and post-natal development study in rats, administration of dasatinib from gestation day (GD) 16 through lactation day (LD) 20, GD 21 through LD 20, or LD 4 through LD 20 resulted in extensive pup mortality at maternal exposures that were below the exposures in patients treated with dasatinib at the recommended labeling dose.

### **8.3 Nursing Mothers**

It is unknown whether SPRYCEL is present in human milk. However, dasatinib was present in the milk of lactating rats. Because many drugs are excreted in human milk and because of the potential for serious adverse reactions in nursing infants from SPRYCEL, a decision should be made whether to discontinue nursing or to discontinue the drug, taking into account the importance of the drug to the mother.

## **8.4 Pediatric Use**

The safety and efficacy of SPRYCEL in patients less than 18 years of age have not been established.

## **8.5 Geriatric Use**

In the newly diagnosed chronic phase CML trial, 25 patients (10%) were 65 years of age and over and 7 patients (3%) were 75 years of age and over. Of the 2182 patients in clinical studies of SPRYCEL with resistance or intolerance to imatinib therapy, 547 (25%) were 65 years of age and over and 105 (5%) were 75 years of age and over. No differences in efficacy were observed between older and younger patients. Compared to patients under age 65 years, patients aged 65 years and older are more likely to experience toxicity.

## **8.6 Hepatic Impairment**

The effect of hepatic impairment on the pharmacokinetics of dasatinib was evaluated in healthy volunteers with normal liver function and patients with moderate (Child-Pugh class B) and severe (Child-Pugh class C) hepatic impairment. Compared to the healthy volunteers with normal hepatic function, the dose normalized pharmacokinetic parameters were decreased in the patients with hepatic impairment.

No dosage adjustment is necessary in patients with hepatic impairment [*see Clinical Pharmacology (12.3)*]. Caution is recommended when administering SPRYCEL to patients with hepatic impairment.

## **8.7 Renal Impairment**

There are currently no clinical studies with SPRYCEL in patients with impaired renal function. Less than 4% of dasatinib and its metabolites are excreted via the kidney.

## **8.8 Females of Reproductive Potential**

SPRYCEL can cause fetal harm when administered during pregnancy. Advise female patients of reproductive potential to avoid pregnancy, which may include the use of contraception, during treatment. Advise patients to contact their healthcare provider if they become pregnant, or if pregnancy is suspected, while taking SPRYCEL [*see Use in Specific Populations (8.1)*].

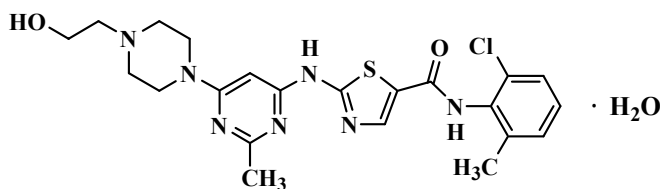
## 10 OVERDOSAGE

Experience with overdose of SPRYCEL in clinical studies is limited to isolated cases. The highest overdose of 280 mg per day for 1 week was reported in two patients and both developed severe myelosuppression and bleeding. Since SPRYCEL is associated with severe myelosuppression [see *Warnings and Precautions (5.1)* and *Adverse Reactions (6.1)*], patients who ingested more than the recommended dosage should be closely monitored for myelosuppression and given appropriate supportive treatment.

Acute overdose in animals was associated with cardiotoxicity. Evidence of cardiotoxicity included ventricular necrosis and valvular/ventricular/atrial hemorrhage at single doses  $\geq 100$  mg/kg ( $600$  mg/m<sup>2</sup>) in rodents. There was a tendency for increased systolic and diastolic blood pressure in monkeys at single doses  $\geq 10$  mg/kg ( $120$  mg/m<sup>2</sup>).

## 11 DESCRIPTION

SPRYCEL (dasatinib) is a kinase inhibitor. The chemical name for dasatinib is N-(2-chloro-6-methylphenyl)-2-[[6-[4-(2-hydroxyethyl)-1-piperazinyl]-2-methyl-4-pyrimidinyl]amino]-5-thiazolecarboxamide, monohydrate. The molecular formula is C<sub>22</sub>H<sub>26</sub>ClN<sub>7</sub>O<sub>2</sub>S • H<sub>2</sub>O, which corresponds to a formula weight of 506.02 (monohydrate). The anhydrous free base has a molecular weight of 488.01. Dasatinib has the following chemical structure:



Dasatinib is a white to off-white powder. The drug substance is insoluble in water and slightly soluble in ethanol and methanol. SPRYCEL tablets are white to off-white, biconvex, film-coated tablets containing dasatinib, with the following inactive ingredients: lactose monohydrate, microcrystalline cellulose, croscarmellose sodium, hydroxypropyl cellulose, and magnesium stearate. The tablet coating consists of hypromellose, titanium dioxide, and polyethylene glycol.

## 12 CLINICAL PHARMACOLOGY

### 12.1 Mechanism of Action

Dasatinib, at nanomolar concentrations, inhibits the following kinases: BCR-ABL, SRC family (SRC, LCK, YES, FYN), c-KIT, EPHA2, and PDGFR $\beta$ . Based on modeling studies, dasatinib is predicted to bind to multiple conformations of the ABL kinase.

*In vitro*, dasatinib was active in leukemic cell lines representing variants of imatinib mesylate sensitive and resistant disease. Dasatinib inhibited the growth of chronic myeloid leukemia (CML) and acute lymphoblastic leukemia (ALL) cell lines overexpressing BCR-ABL. Under the conditions of the assays, dasatinib was able to overcome imatinib resistance resulting from BCR-ABL kinase domain mutations, activation of alternate signaling pathways involving the SRC family kinases (LYN, HCK), and multi-drug resistance gene overexpression.

### 12.2 Pharmacokinetics

#### Absorption

Maximum plasma concentrations ( $C_{max}$ ) of dasatinib are observed between 0.5 and 6 hours ( $T_{max}$ ) following oral administration. Dasatinib exhibits dose proportional increases in AUC and linear elimination characteristics over the dose range of 15 mg to 240 mg/day. The overall mean terminal half-life of dasatinib is 3 to 5 hours.

Data from a trial of 54 healthy subjects administered a single, 100-mg dose of dasatinib 30 minutes following consumption of a high-fat meal resulted in a 14% increase in the mean AUC of dasatinib. The observed food effects were not clinically relevant.

#### Distribution

In patients, dasatinib has an apparent volume of distribution of 2505 L, suggesting that the drug is extensively distributed in the extravascular space. Binding of dasatinib and its active metabolite to human plasma proteins *in vitro* was approximately 96% and 93%, respectively, with no concentration dependence over the range of 100 to 500 ng/mL.

## Metabolism

Dasatinib is extensively metabolized in humans, primarily by the cytochrome P450 enzyme 3A4. CYP3A4 was the primary enzyme responsible for the formation of the active metabolite. Flavin-containing monooxygenase 3 (FMO-3) and uridine diphosphate-glucuronosyltransferase (UGT) enzymes are also involved in the formation of dasatinib metabolites.

The exposure of the active metabolite, which is equipotent to dasatinib, represents approximately 5% of the dasatinib AUC. This indicates that the active metabolite of dasatinib is unlikely to play a major role in the observed pharmacology of the drug. Dasatinib also had several other inactive oxidative metabolites.

Dasatinib is a weak time-dependent inhibitor of CYP3A4. At clinically relevant concentrations, dasatinib does not inhibit CYP1A2, 2A6, 2B6, 2C8, 2C9, 2C19, 2D6, or 2E1. Dasatinib is not an inducer of human CYP enzymes.

## Elimination

Elimination is primarily via the feces. Following a single oral dose of [<sup>14</sup>C]-labeled dasatinib, approximately 4% and 85% of the administered radioactivity was recovered in the urine and feces, respectively, within 10 days. Unchanged dasatinib accounted for 0.1% and 19% of the administered dose in urine and feces, respectively, with the remainder of the dose being metabolites.

## Effects of Age and Gender

Pharmacokinetic analyses of demographic data indicate that there are no clinically relevant effects of age and gender on the pharmacokinetics of dasatinib.

## Hepatic Impairment

Dasatinib doses of 50 mg and 20 mg were evaluated in eight patients with moderate (Child-Pugh class B) and seven patients with severe (Child-Pugh class C) hepatic impairment, respectively. Matched controls with normal hepatic function (n=15) were also evaluated and received a dasatinib dose of 70 mg. Compared to subjects with normal liver function, patients with moderate hepatic impairment had decreases in dose normalized  $C_{max}$  and AUC by 47% and 8%, respectively. Patients with severe hepatic impairment had dose normalized  $C_{max}$  decreased by 43% and AUC decreased by 28% compared to the normal controls.

These differences in  $C_{max}$  and AUC are not clinically relevant. Dose adjustment is not necessary in patients with hepatic impairment.

## **13 NONCLINICAL TOXICOLOGY**

### **13.1 Carcinogenesis, Mutagenesis, Impairment of Fertility**

In a two-year carcinogenicity study, rats were administered oral doses of dasatinib at 0.3, 1, and 3 mg/kg/day. The highest dose resulted in a plasma drug exposure (AUC) level approximately 60% of the human exposure at 100 mg once daily. Dasatinib induced a statistically significant increase in the combined incidence of squamous cell carcinomas and papillomas in the uterus and cervix of high-dose females and prostate adenoma in low-dose males.

Dasatinib was clastogenic when tested *in vitro* in Chinese hamster ovary cells, with and without metabolic activation. Dasatinib was not mutagenic when tested in an *in vitro* bacterial cell assay (Ames test) and was not genotoxic in an *in vivo* rat micronucleus study.

Dasatinib did not affect mating or fertility in male and female rats at plasma drug exposure (AUC)–similar to the human exposure at 100 mg daily; however, dasatinib induced embryo lethality. In repeat dose studies, administration of dasatinib resulted in reduced size and secretion of seminal vesicles, and immature prostate, seminal vesicle, and testis. The administration of dasatinib resulted in uterine inflammation and mineralization in monkeys, and cystic ovaries and ovarian hypertrophy in rodents.

## **14 CLINICAL STUDIES**

### **14.1 Newly Diagnosed Chronic Phase CML**

An open-label, multicenter, international, randomized trial was conducted in adult patients with newly diagnosed chronic phase CML. A total of 519 patients were randomized to receive either SPRYCEL 100 mg once daily or imatinib 400 mg once daily. Patients with a history of cardiac disease were included in this trial except those which had a myocardial infarction within 6 months, congestive heart failure within 3 months, significant arrhythmias, or QTc prolongation. The primary endpoint was the rate of confirmed complete cytogenetic response (CCyR) within 12 months. Confirmed CCyR was defined as a CCyR noted on two consecutive occasions (at least 28 days apart).

Median age was 46 years in the SPRYCEL group and 49 years in the imatinib groups, with 10% and 11% of patients  $\geq 65$  years of age. There were slightly more male than female patients in both groups (59% vs 41%). Fifty-three percent of all patients were Caucasian and 39% were Asian. At baseline, the distribution of Hasford Scores was similar in the SPRYCEL and imatinib treatment

groups (low risk: 33% and 34%; intermediate risk: 48% and 47%; high risk: 19% and 19%, respectively). With a minimum of 12 months follow up, 85% of patients randomized to SPRYCEL and 81% of patients randomized to imatinib were still on study.

With a minimum of 24 months follow up, 77% of patients randomized to SPRYCEL and 75% of patients randomized to imatinib were still on study and with a minimum of 36 months follow up, 71% and 69% of patients, respectively, were still on study.

Efficacy results are summarized in Table 7.

**Table 7: Efficacy Results in Newly Diagnosed Patients with Chronic Phase CML**

	SPRYCEL (n=259)	Imatinib (n=260)	p-value
Response Rate (95% CI)			
<b>Confirmed CCyR<sup>a</sup></b>			
within 12 months	76.8% (71.2–81.8)	66.2% (60.1–71.9)	p=0.007*
within 24 months	80.3%	74.2%	_**
within 36 months	82.6%	77.3%	_**
<b>Major Molecular Response<sup>b</sup></b>			
12 months	52.1% (45.9–58.3)	33.8% (28.1–39.9)	p<0.0001*
24 months	64.5% (58.3–70.3)	50% (43.8–56.2)	_**
36 months	69.1% (63.1–74.7)	56.2% (49.9–62.3)	_**

<sup>a</sup> Confirmed CCyR is defined as a CCyR noted on two consecutive occasions at least 28 days apart.

<sup>b</sup> Major molecular response (at any time) was defined as BCR-ABL ratios ≤0.1% by RQ-PCR in peripheral blood samples standardized on the International scale. These are cumulative rates representing minimum follow up for the time frame specified.

\* Adjusted for Hasford Score and indicated statistical significance at a pre-defined nominal level of significance.

\*\* Formal statistical comparison of cCCyR and MMR rates was only performed at the time of the primary endpoint (cCCyR within 12 months).

CI = confidence interval.

After 36 months follow up, median time to confirmed CCyR was 3.1 months in 214 SPRYCEL responders and 5.8 months in 201 imatinib responders. Median time to MMR after 36 months follow up was 8.9 months in 179 SPRYCEL responders and 13.4 months in 146 imatinib responders.

At 36 months, 8 patients (3%) on the dasatinib arm progressed to either accelerated phase or blast crisis while 13 patients (5%) on the imatinib arm progressed to either accelerated phase or blast crisis.

The rate of MMR at any time in each risk group determined by Hasford score was higher in the SPRYCEL group compared with the imatinib group (low risk: 81% and 64%; intermediate risk: 64% and 56%; high risk: 61% and 42%, respectively).

BCR-ABL sequencing was performed on blood samples from patients in the newly diagnosed trial who discontinued dasatinib or imatinib therapy. Among dasatinib-treated patients the mutations detected were T315I, F317I/L, and V299L.

Dasatinib does not appear to be active against the T315I mutation, based on *in vitro* data.

## **14.2 Imatinib-resistant or Intolerant CML or Ph+ ALL**

The efficacy and safety of SPRYCEL were investigated in adult patients with CML or Ph+ ALL whose disease was resistant to or who were intolerant to imatinib: 1158 patients had chronic phase CML, 858 patients had accelerated phase, myeloid blast phase, or lymphoid blast phase CML, and 130 patients had Ph+ ALL. In a clinical trial in chronic phase CML, resistance to imatinib was defined as failure to achieve a complete hematologic response (CHR; after 3 months), major cytogenetic response (MCyR; after 6 months), or complete cytogenetic response (CCyR; after 12 months); or loss of a previous molecular response (with concurrent  $\geq 10\%$  increase in Ph+ metaphases), cytogenetic response, or hematologic response. Imatinib intolerance was defined as inability to tolerate 400 mg or more of imatinib per day or discontinuation of imatinib because of toxicity.

Results described below are based on a minimum of 2 years follow up after the start of SPRYCEL therapy in patients with a median time from initial diagnosis of approximately 5 years. Across all studies, 48% of patients were women, 81% were white, 15% were black or Asian, 25% were 65 years of age or older, and 5% were 75 years of age or older. Most patients had long disease histories with extensive prior treatment, including imatinib, cytotoxic chemotherapy, interferon, and stem cell transplant. Overall, 80% of patients had imatinib-resistant disease and 20% of patients were intolerant to imatinib. The maximum imatinib dose had been 400–600 mg/day in about 60% of the patients and >600 mg/day in 40% of the patients.

The primary efficacy endpoint in chronic phase CML was MCyR, defined as elimination (CCyR) or substantial diminution (by at least 65%, partial cytogenetic response) of Ph+ hematopoietic cells. The primary efficacy endpoint in accelerated phase, myeloid blast phase, lymphoid blast

phase CML, and Ph+ ALL was major hematologic response (MaHR), defined as either a CHR or no evidence of leukemia (NEL).

### Chronic Phase CML

*Dose-Optimization Trial:* A randomized, open-label trial was conducted in patients with chronic phase CML to evaluate the efficacy and safety of SPRYCEL administered once daily compared with SPRYCEL administered twice daily. Patients with significant cardiac diseases, including myocardial infarction within 6 months, congestive heart failure within 3 months, significant arrhythmias, or QTc prolongation were excluded from the trial. The primary efficacy endpoint was MCyR in patients with imatinib-resistant CML. A total of 670 patients, of whom 497 had imatinib-resistant disease, were randomized to the SPRYCEL 100 mg once daily, 140 mg once daily, 50 mg twice daily, or 70 mg twice daily group. Median duration of treatment was 22 months.

Efficacy was achieved across all SPRYCEL treatment groups with the once daily schedule demonstrating comparable efficacy (non-inferiority) to the twice daily schedule on the primary efficacy endpoint (difference in MCyR 1.9%; 95% CI [−6.8%–10.6%]).

Efficacy results are presented in Table 8 for patients with chronic phase CML who received the recommended starting dose of 100 mg once daily. Additional efficacy results in this patient population are described after the table. Results for all patients with chronic phase CML, regardless of dosage (a starting dosage of 100 mg once daily, 140 mg once daily, 50 mg twice daily, or 70 mg twice daily), were consistent with those for patients treated with 100 mg once daily.

**Table 8: Efficacy of SPRYCEL in Imatinib Resistant or Intolerant Chronic Phase CML (minimum of 24 months follow up)**

	100 mg Once Daily (n=167)
CHR <sup>a</sup> % (95% CI)	92% (86–95)
MCyR <sup>b</sup> % (95% CI)	63% (56–71)
CCyR% (95% CI)	50% (42–58)

<sup>a</sup> CHR (response confirmed after 4 weeks): WBC  $\leq$  institutional ULN, platelets  $<450,000/\text{mm}^3$ , no blasts or promyelocytes in peripheral blood,  $<5\%$  myelocytes plus metamyelocytes in peripheral blood, basophils in peripheral blood  $<20\%$ , and no extramedullary involvement.

<sup>b</sup> MCyR combines both complete (0% Ph+ metaphases) and partial ( $>0\%$ – $35\%$ ) responses.

In the SPRYCEL 100 mg once daily group, median time to MCyR was 2.9 months (95% CI: [2.8%–3.0%]) with a minimum of 24 months follow up. Based on the Kaplan-Meier estimates, 93% (95% CI: [88%–98%]) of patients who had achieved an MCyR maintained that response for 18 months. In the 100 mg once daily group, MMR was achieved in 43% of all randomized patients within 5 years. The estimated rate of progression-free survival and overall survival at 2 years in all patients treated with 100 mg once daily was 80% (95% CI: [73%–87%]) and 91% (95% CI: [86%–96%]), respectively. Based on data six years after the last patient was enrolled in the trial, 64% were known to be alive at 5 years, 22% were known to have died prior to 5 years and 14% had an unknown 5-year survival status.

By 5 years, transformation to either accelerated or blast phase occurred in eight patients on treatment.

### **Advanced Phase CML and Ph+ ALL**

*Dose-Optimization Trial:* One randomized open-label trial was conducted in patients with advanced phase CML (accelerated phase CML, myeloid blast phase CML, or lymphoid blast phase CML) to evaluate the efficacy and safety of SPRYCEL administered once daily compared with SPRYCEL administered twice daily. The primary efficacy endpoint was MaHR. A total of 611 patients were randomized to either the SPRYCEL 140 mg once daily or 70 mg twice daily group. Median duration of treatment was approximately 6 months for both treatment groups. The once daily schedule demonstrated comparable efficacy (non-inferiority) to the twice daily schedule on the primary efficacy endpoint.

The efficacy and safety of SPRYCEL were also investigated in patients with Ph+ ALL in one randomized trial (starting dosage 140 mg once daily or 70 mg twice daily) and one single-arm trial (starting dosage 70 mg twice daily). The primary efficacy endpoint was MaHR. A total of 130 patients were enrolled in these studies. The median duration of therapy was 3 months.

Response rates are presented in Table 9.

**Table 9: Efficacy of SPRYCEL in Imatinib Resistant or Intolerant Advanced Phase CML and Ph+ ALL**

	140 mg Once Daily			
	Accelerated (n=158)	Myeloid Blast (n=75)	Lymphoid Blast (n=33)	Ph+ ALL (n=40)
<b>MaHR<sup>a</sup></b> (95% CI)	66% (59–74)	28% (18–40)	42% (26–61)	38% (23–54)
<b>CHR<sup>a</sup></b> (95% CI)	47% (40–56)	17% (10–28)	21% (9–39)	33% (19–49)
<b>NEL<sup>a</sup></b> (95% CI)	19% (13–26)	11% (5–20)	21% (9–39)	5% (1–17)
<b>MCyR<sup>b</sup></b> (95% CI)	39% (31–47)	28% (18–40)	52% (34–69)	70% (54–83)
<b>CCyR</b> (95% CI)	32% (25–40)	17% (10–28)	39% (23–58)	50% (34–66)

<sup>a</sup> Hematologic response criteria (all responses confirmed after 4 weeks): Major hematologic response: (MaHR) = complete hematologic response (CHR) + no evidence of leukemia (NEL).

CHR: WBC ≤ institutional ULN, ANC ≥1000/mm<sup>3</sup>, platelets ≥100,000/mm<sup>3</sup>, no blasts or promyelocytes in peripheral blood, bone marrow blasts ≤5%, <5% myelocytes plus metamyelocytes in peripheral blood, basophils in peripheral blood <20%, and no extramedullary involvement.

NEL: same criteria as for CHR but ANC ≥500/mm<sup>3</sup> and <1000/mm<sup>3</sup>, or platelets ≥20,000/mm<sup>3</sup> and ≤100,000/mm<sup>3</sup>.

<sup>b</sup> MCyR combines both complete (0% Ph+ metaphases) and partial (>0%–35%) responses.

CI = confidence interval ULN = upper limit of normal range.

In the SPRYCEL 140 mg once daily group, the median time to MaHR was 1.9 months for patients with accelerated phase CML, 1.9 months for patients with myeloid blast phase CML, and 1.8 months for patients with lymphoid blast phase CML.

In patients with myeloid blast phase CML, the median duration of MaHR was 8 months and 9 months for the 140 mg once daily group and the 70 mg twice daily group, respectively. In patients with lymphoid blast phase CML, the median duration of MaHR was 5 months and 8 months for the 140 mg once daily group and the 70 mg twice daily group, respectively. In patients with Ph+ ALL who were treated with SPRYCEL 140 mg once daily, the median duration of MaHR was 4.6 months. The medians of progression-free survival for patients with Ph+ ALL treated with SPRYCEL 140 mg once daily and 70 mg twice daily were 4.0 months and 3.5 months, respectively.

\

## 16 HOW SUPPLIED/STORAGE AND HANDLING

### 16.1 How Supplied

SPRYCEL<sup>®</sup> (dasatinib) tablets are available as described in Table 10.

**Table 10: SPRYCEL Trade Presentations**

NDC Number	Strength	Description	Tablets per Bottle
0003-0527-11	20 mg	white to off-white, biconvex, round, film-coated tablet with “BMS” debossed on one side and “527” on the other side	60
0003-0528-11	50 mg	white to off-white, biconvex, oval, film-coated tablet with “BMS” debossed on one side and “528” on the other side	60
0003-0524-11	70 mg	white to off-white, biconvex, round, film-coated tablet with “BMS” debossed on one side and “524” on the other side	60
0003-0855-22	80 mg	white to off-white, biconvex, triangle, film-coated tablet with “BMS” and “80” (BMS over 80) debossed on one side and “855” on the other side	30
0003-0852-22	100 mg	white to off-white, biconvex, oval, film-coated tablet with “BMS 100” debossed on one side and “852” on the other side	30
0003-0857-22	140 mg	white to off-white, biconvex, round, film-coated tablet with “BMS” and “140” (BMS over 140) debossed on one side and “857” on the other side	30

### 16.2 Storage

SPRYCEL<sup>®</sup> tablets should be stored at 20° to 25°C (68° to 77°F); excursions permitted between 15°–30°C (59°–86°F) [see USP Controlled Room Temperature].

### 16.3 Handling and Disposal

Sprycel is an antineoplastic product. Follow special handling and disposal procedures.

SPRYCEL (dasatinib) tablets consist of a core tablet (containing the active drug substance), surrounded by a film coating to prevent exposure of pharmacy and clinical personnel to the active drug substance. However, if tablets are inadvertently crushed or broken, pharmacy and clinical personnel should wear disposable chemotherapy gloves. Personnel who are pregnant should avoid exposure to crushed or broken tablets.

## **17 PATIENT COUNSELING INFORMATION**

*See FDA-Approved Patient Labeling.*

### **17.1 Bleeding**

Patients should be informed of the possibility of serious bleeding and to report immediately any signs or symptoms suggestive of hemorrhage (unusual bleeding or easy bruising).

### **17.2 Myelosuppression**

Patients should be informed of the possibility of developing low blood cell counts; they should be instructed to report immediately should fever develop, particularly in association with any suggestion of infection.

### **17.3 Fluid Retention**

Patients should be informed of the possibility of developing fluid retention (swelling, weight gain, or shortness of breath) and to seek medical attention if those symptoms arise.

### **17.4 Embryo-Fetal Toxicity**

Patients should be informed that SPRYCEL can cause fetal harm when administered to a pregnant woman. Women should be advised of the potential hazard to the fetus and to avoid becoming pregnant. If SPRYCEL is used during pregnancy, or if the patient becomes pregnant while taking SPRYCEL, the patient should be apprised of the potential hazard to the fetus [*see Warnings and Precautions (5.7) and Use in Specific Populations (8.1, 8.8).*].

### **17.5 Gastrointestinal Complaints**

Patients should be informed that they may experience nausea, vomiting, or diarrhea with SPRYCEL. If these symptoms are significant, they should seek medical attention.

### **17.6 Pain**

Patients should be informed that they may experience headache or musculoskeletal pain with SPRYCEL. If these symptoms are significant, they should seek medical attention.

## **17.7 Fatigue**

Patients should be informed that they may experience fatigue with SPRYCEL. If this symptom is significant, they should seek medical attention.

## **17.8 Rash**

Patients should be informed that they may experience skin rash with SPRYCEL. If this symptom is significant, they should seek medical attention.

## **17.9 Lactose**

Patients should be informed that SPRYCEL contains 135 mg of lactose monohydrate in a 100-mg daily dose and 189 mg of lactose monohydrate in a 140-mg daily dose.

## **17.10 Missed Dose**

If the patient misses a dose of SPRYCEL, the patient should take the next scheduled dose at its regular time. The patient should not take two doses at the same time.

## FDA-Approved Patient Labeling

### PATIENT INFORMATION

#### SPRYCEL<sup>®</sup> (Spry-sell)

#### (dasatinib)

#### Tablets

Read the Patient Information that comes with SPRYCEL before you start taking it and each time you get a refill. There may be new information. This leaflet does not take the place of talking with your healthcare provider about your medical condition or treatment.

#### What is SPRYCEL?

SPRYCEL<sup>®</sup> is a prescription medicine used to treat adults who have:

- newly diagnosed Philadelphia chromosome-positive (Ph+) chronic myeloid leukemia (CML) in chronic phase.
- Ph+ CML who no longer benefit from, or did not tolerate, other treatment, including Gleevec<sup>®</sup> (imatinib mesylate).
- Philadelphia chromosome-positive acute lymphoblastic leukemia (Ph+ ALL) who no longer benefit from, or did not tolerate, other treatment.

It is not known if SPRYCEL is safe and effective in children younger than 18 years old.

#### What should I tell my healthcare provider before taking SPRYCEL?

Before you take SPRYCEL, tell your healthcare provider if you:

- have problems with your immune system
- have liver problems
- have heart problems
- are lactose intolerant
- have any other medical conditions
- are pregnant or planning to become pregnant. SPRYCEL can harm your unborn baby. Sexually active female patients of childbearing potential taking SPRYCEL should avoid

pregnancy. Talk to your healthcare provider right away if you are pregnant or plan to become pregnant.

- are breastfeeding or plan to breastfeed. It is not known if SPRYCEL passes into your breast milk or if it can harm your baby. You and your healthcare provider should decide if you will take SPRYCEL or breastfeed. You should not do both.

**Tell your healthcare provider about all the medicines you take, including prescription and non-prescription medicines, vitamins, antacids, and herbal supplements.**

**Especially tell your healthcare provider if you take:**

- **medicines that increase the amount of SPRYCEL in your bloodstream, such as:**

Nizoral <sup>®</sup> (ketoconazole),	Nefazodone (serzone, nefadar),
Sporanox <sup>®</sup> (itraconazole),	Invirase <sup>®</sup> (saquinavir),
Norvir <sup>®</sup> (ritonavir),	Ketek <sup>®</sup> (telithromycin),
Reyataz <sup>®</sup> (atazanavir sulfate),	E-mycin <sup>®</sup> (erythromycin),
Crixivan <sup>®</sup> (indinavir),	Biaxin <sup>®</sup> (clarithromycin).
Viracept <sup>®</sup> (nelfinavir),	

- **medicines that decrease the amount of SPRYCEL in your bloodstream, such as:**

Decadron <sup>®</sup> (dexamethasone),	Rimactane <sup>®</sup> (rifampin),
Dilantin <sup>®</sup> (phenytoin),	Luminal <sup>®</sup> (phenobarbital).
Tegretol <sup>®</sup> (carbamazepine),	

- **medicines whose blood levels might change by taking SPRYCEL, such as:**

Sandimmune <sup>®</sup> (cyclosporine),	Rapamune <sup>®</sup> (sirolimus),
Alfenta <sup>®</sup> (alfentanil),	Prograf <sup>®</sup> (tacrolimus),
Fentanyl <sup>®</sup> (fentanyl),	Ergomar <sup>®</sup> (ergotamine).
Orap <sup>®</sup> (pimozide),	

**SPRYCEL is best absorbed from your stomach into your bloodstream in the presence of stomach acid. You should avoid taking medicines that reduce stomach acid, such as:**

Tagamet <sup>®</sup> (cimetidine),	Protonix <sup>®</sup> (pantoprazole sodium),
Pepcid <sup>®</sup> (famotidine),	Nexium <sup>®</sup> (esomeprazole),
Zantac <sup>®</sup> (ranitidine),	AcipHex <sup>®</sup> (rabeprazole),
Prilosec <sup>®</sup> (omeprazole),	Prevacid <sup>®</sup> (lansoprazole).

**Medicines that neutralize stomach acid, such as** Maalox<sup>®</sup> (aluminum hydroxide/magnesium hydroxide), Tums<sup>®</sup> (calcium carbonate), or Rolaids<sup>®</sup> (calcium carbonate and magnesia), may be taken up to 2 hours before or 2 hours after SPRYCEL.

**Since SPRYCEL therapy may cause bleeding,** tell your healthcare provider if you are using blood thinner medicine, such as Coumadin<sup>®</sup> (warfarin sodium) or aspirin.

**Know the medicines you take.** Keep a list of your medicines and show it to your healthcare provider and pharmacist when you get a new medicine.

### **How should I take SPRYCEL?**

**Take SPRYCEL exactly as prescribed by your healthcare provider.**

- Take SPRYCEL with or without food. Try to take SPRYCEL at the same time each day.
- Swallow SPRYCEL tablets whole. Do not break, cut, or crush the tablets.
- You should not drink grapefruit juice while taking SPRYCEL.
- **Your healthcare provider may:**
  - **change your dose of SPRYCEL or**
  - **tell you to temporarily stop taking SPRYCEL.**
- **Do not change your dose or stop taking SPRYCEL without first talking with your healthcare provider.**
- **If you miss a dose of SPRYCEL,** take your next scheduled dose at its regular time. Do not take two doses at the same time. Call your healthcare provider or pharmacist if you are not sure what to do.

- **If you take too much SPRYCEL**, call your healthcare provider or go to the nearest hospital emergency room right away.

## **What are the possible side effects of SPRYCEL?**

### **SPRYCEL may cause serious side effects, including:**

- **Low Blood Cell Counts:** SPRYCEL may cause low red blood cell counts (anemia), low white blood cell counts (neutropenia), and low platelet counts (thrombocytopenia). Your healthcare provider will do blood tests to check your blood cell counts regularly during your treatment with SPRYCEL. Call your healthcare provider right away if you have a fever or any signs of an infection while taking SPRYCEL.
- **Bleeding:** SPRYCEL may cause severe bleeding that can lead to death. Call your healthcare provider right away if you have:
  - unusual bleeding or bruising of your skin
  - bright red or dark tar-like stools
  - a decrease in your level of consciousness, headache, or change in speech.
- **Your body may hold too much fluid (fluid retention):** In severe cases, fluid may build up in the lining of your lungs, the sac around your heart, or your stomach cavity. Call your healthcare provider right away if you get any of these symptoms during treatment with SPRYCEL:
  - swelling all over your body
  - weight gain
  - shortness of breath and cough.
- **Heart problems.** SPRYCEL may cause an abnormal heart rate, heart problems or a heart attack. Your healthcare provider will monitor the potassium and magnesium levels in your blood, and your heart function.
- **Pulmonary Arterial Hypertension (PAH).** SPRYCEL may cause high blood pressure in the vessels of your lungs. PAH may happen at any time during your treatment with SPRYCEL. Your healthcare provider should check your heart and lungs before and during your treatment with SPRYCEL. Call your healthcare provider right away if you have shortness of breath, tiredness, or swelling all over your body (fluid retention).

Other common side effects of SPRYCEL therapy include:

- diarrhea
- headache
- cough
- skin rash
- fever
- nausea
- tiredness
- vomiting
- muscle pain
- weakness
- infections

Tell your healthcare provider if you have any side effect that bothers you or that does not go away.

These are not all of the possible side effects of SPRYCEL. For more information, ask your healthcare provider or pharmacist.

Call your doctor for medical advice about side effects. You may report side effects to FDA at 1-800-FDA-1088.

### **How should I store SPRYCEL?**

- Store SPRYCEL at room temperature, between 68°F to 77°F (20°C to 25°C).
- Ask your healthcare provider or pharmacist about the right way to throw away outdated or unused SPRYCEL.
- Women who are pregnant should not handle crushed or broken SPRYCEL tablets.
- **Keep SPRYCEL and all medicines out of the reach of children and pets.**

### **General information about SPRYCEL**

Medicines are sometimes prescribed for purposes other than those listed in the Patient Information leaflet. Do not use SPRYCEL for a condition for which it is not prescribed. Do not give SPRYCEL to other people even if they have the same symptoms you have. It may harm them.

This Patient Information leaflet summarizes the most important information about SPRYCEL. If you would like more information, talk with your healthcare provider. You can ask your healthcare provider or pharmacist for information about SPRYCEL that is written for healthcare professionals.

For more information, go to [www.sprycel.com](http://www.sprycel.com) or call 1-800-332-2056.

**What are the ingredients in SPRYCEL?**

**Active ingredient:** dasatinib

**Inactive ingredients:** lactose monohydrate, microcrystalline cellulose, croscarmellose sodium, hydroxypropyl cellulose, and magnesium stearate. The tablet coating consists of hypromellose, titanium dioxide, and polyethylene glycol.

**This Patient Package Insert has been approved by the U.S. Food and Drug Administration.**

Manufactured by:  
Bristol-Myers Squibb Company  
Princeton, NJ 08543 USA

---

Bristol-Myers Squibb Company  
Princeton, NJ 08543 USA

---

1284903XX

Rev April 2014