



**• Unflavored**  
**• Sugar Free**  
**• Dissolves in any Beverage**

Drug Facts	Drug Facts (continued)
<p><b>Active ingredient (in each dose)</b> Polyethylene Glycol 3350, 17 g.....Osmotic Laxative</p> <p><b>Purpose</b> Osmotic Laxative</p> <p><b>Use</b>  <ul style="list-style-type: none"> <li>■ relieves occasional constipation (irregularity)</li> <li>■ generally produces a bowel movement in 1 to 3 days</li> </ul> </p> <p><b>Warnings</b>  <b>Allergy alert:</b> Do not use if you are allergic to polyethylene glycol  <b>Do not use</b> if you have kidney disease, except under the advice and supervision of a doctor  <b>Ask a doctor before use if you have</b>  <ul style="list-style-type: none"> <li>■ nausea, vomiting or abdominal pain</li> <li>■ a sudden change in bowel habits that lasts over 2 weeks</li> <li>■ irritable bowel syndrome</li> </ul> <b>Ask a doctor or pharmacist before use if you are</b> taking a prescription drug  <b>When using this product</b> you may have loose, watery, more frequent stools  <b>Stop use and ask a doctor if</b>  <ul style="list-style-type: none"> <li>■ you have rectal bleeding or your nausea, bloating, cramping or abdominal pain gets worse. These may be signs of a serious condition.</li> <li>■ you get diarrhea</li> <li>■ you need to use a laxative for longer than 1 week</li> </ul> </p>	<p><b>Directions</b>  <b>do not take more than directed unless advised by your doctor</b>  <ul style="list-style-type: none"> <li>■ adults and children 17 years of age and older: <ul style="list-style-type: none"> <li>■ use once a day</li> <li>■ stir and dissolve one packet of powder (17 g) in any 4 to 8 ounces of beverage (cold, hot or room temperature) then drink</li> </ul> </li> <li>■ do not combine with starch-based thickeners used for difficulty swallowing</li> <li>■ ensure that the powder is fully dissolved before drinking</li> <li>■ do not drink if there are any clumps</li> <li>■ do not use more than 7 days</li> <li>■ children 16 years of age or under: ask a doctor</li> </ul> </p> <p><b>Other information</b>  <ul style="list-style-type: none"> <li>■ store at 20° - 25°C (68° - 77°F)</li> <li>■ tamper-evident: do not use if foil is open or broken</li> </ul> </p> <p><b>Inactive ingredients</b> none</p> <p><b>Questions or comments?</b> 1-800-MiraLAX (1-800-647-2529)</p> <p style="text-align: right;">Bayer</p>



**MiraLAX**  
Polyethylene Glycol 3350, Powder for Solution, Osmotic Laxative

**Mix-In Pax** Travel Size

• Relieves Occasional Constipation/Irregularity  
• Softens Stool

UNFLAVORED POWDER GRIT FREE

1 DOSE

NET WT 0.5 OZ (17 g)

#1 DOCTOR RECOMMENDED BRAND

FOLD AT LINE TEAR AT ARROW

BAYER

**Actual Size 100%**

FDA38768-0

DRUG FACTS INFO (updated 5/18/18)		
CATEGORY	REQUIRED	ACTUAL IN FILE
Drug Facts Title	>8 pt. **	9 pt.
Drug Facts Continued	8 pt.	8 pt.
Headings†	8 pt.-bold italic‡	8 pt.
Subheadings	≥6 pt.	6 pt.
Body Text	≥6 pt.	6 pt.
Bullets	5 pt.	5 pt.
Leading	≥0.5 pt.	0.5 pt.
Hairlines	0.5 pt. rule	0.5 pt.
Box and Barlines†	>0.5 pt. rule	1 pt.
Characters Per Inch:	No more than 39	≤39

† Headings are to be at least 2pts larger than Body Text.  
\*\* Drug Facts Title to be larger than all other type size used in DFP  
‡ FDA Recommends 2.5pt rule



**Actual Size 100%**

FDA38901-2

DRUG FACTS INFO (updated 5/18/18)		
CATEGORY	REQUIRED	ACTUAL IN FILE
Drug Facts Title	>=8 pt. **	8 pt.
Drug Facts Continued	8 pt.	8 pt.
Headings*	8 pt.-bold italic*	8 pt.
Subheadings	>=6 pt.	6 pt.
Body Text	>=6 pt.	6 pt.
Bullets	5 pt.	5 pt.
Leading	>=0.5 pt.	0.5 pt.
Hairlines	0.5 pt. rule	0.5 pt.
Box and Barline	>=0.5 pt. rule	1 pt.
Characters Per Inch	No more than 30	<=30

\* Headings are to be at least 20pt larger than Body Text.  
 \*\* Drug Facts Title to be larger than all other type size used in ODP  
 † FDA Recommends 2.5pt rule

**Not For Individual Sale**

- **Unflavored**
- **Sugar Free**
- **Dissolves in Any Beverage**

Drug Facts	Purpose
<b>Active ingredient (in each dose)</b> Polyethylene Glycol 3350, 17 g.....Osmotic Laxative	
<b>Use</b> ■ relieves occasional constipation (irregularity) ■ generally produces a bowel movement in 1 to 3 days	
<b>Warnings</b> <b>Allergy alert:</b> Do not use if you are allergic to polyethylene glycol <b>Do not use</b> if you have kidney disease, except under the advice and supervision of a doctor <b>Ask a doctor before use if you have</b> ■ nausea, vomiting or abdominal pain ■ a sudden change in bowel habits that lasts over 2 weeks ■ irritable bowel syndrome <b>Ask a doctor or pharmacist before use if you are taking a prescription drug</b> <b>When using this product</b> you may have loose, watery, more frequent stools <b>Stop use and ask a doctor if</b> ■ you have rectal bleeding or your nausea, bloating, cramping or abdominal pain gets worse. These may be signs of a serious condition. ■ you get diarrhea ■ you need to use a laxative for longer than 1 week	
<b>Directions</b> ■ <b>do not take more than directed unless advised by your doctor</b> ■ adults and children 17 years of age and older: ■ use once a day ■ stir and dissolve one packet of powder (17 g) in any 4 to 8 ounces of beverage (cold, hot or room temperature) then drink ■ do not combine with starch-based thickeners used for difficulty swallowing ■ ensure that the powder is fully dissolved before drinking ■ do not drink if there are any clumps ■ do not use more than 7 days ■ children 16 years of age or under: ask a doctor	
<b>Other information</b> ■ store at 20° - 25°C (68° - 77°F) ■ tamper-evident: do not use if foil is open or broken	
<b>Inactive ingredients</b> none	
<b>Questions or comments?</b> 1-800-MiraLAX (1-800-647-2529)	

Bayer, the Bayer Cross, Mix-In Pax and MiraLAX are registered trademarks of Bayer.  
© 2021 Bayer.  
Dist by: Bayer HealthCare LLC,  
Whippany, NJ 07981  
00000

Bayer

MiraLAX<sup>®</sup>

Polyethylene Glycol 3350, Powder for Solution, Osmotic Laxative

Mix-In Pax<sup>®</sup> Travel Size

• Relieves Occasional Constipation/Irregularity

• Softens Stool

1 DOSE

NET WT 0.5 OZ (17 g)

FOLD AT LINE  
TEAR AT ARROW

Actual Size 100%

FDA38767-0

DRUG FACTS INFO (updated 5/18/18)		
CATEGORY	REQUIRED	ACTUAL IN FILE
Drug Facts Title	>8 pt. **	9 pt.
Drug Facts Continued	8 pt.	8 pt.
Headings <sup>†</sup>	8 pt.-bold italic <sup>†</sup>	8 pt.
Subheadings	≥6 pt.	6 pt.
Body Text	≥6 pt.	6 pt.
Bullets	5 pt.	5 pt.
Leading	≥0.5 pt.	0.5 pt.
Hairlines	0.5 pt. rule	0.5 pt.
Box and Barlines <sup>†</sup>	>0.5 pt. rule	1 pt.
Characters Per Inch:	No more than 39	≤39

<sup>†</sup> Headings are to be at least 2pts larger than Body Text.  
<sup>\*\*</sup> Drug Facts Title to be larger than all other type size used in DFF.  
<sup>†</sup> FDA Recommends 2.5pt. rule

**Not For Individual Sale**

- **Unflavored**
- **Sugar Free**
- **Dissolves in any Beverage**

<b>Drug Facts</b>	<b>Drug Facts (continued)</b>
<b>Active ingredient (in each dose) Purpose</b> Polyethylene Glycol 3350, 17 g.....Osmotic Laxative	If pregnant or breast-feeding, ask a health professional before use. <b>Keep out of reach of children.</b> In case of overdose, get medical help or contact a Poison Control Center right away.
<b>Use</b> ■ relieves occasional constipation (irregularity) ■ generally produces a bowel movement in 1 to 3 days	<b>Directions</b> ■ do not take more than directed unless advised by your doctor ■ adults and children 17 years of age and older: ■ use once a day ■ stir and dissolve one packet of powder (17 g) in any 4 to 8 ounces of beverage (cold, hot or room temperature) then drink ■ do not combine with starch-based thickeners used for difficulty swallowing ■ ensure that the powder is fully dissolved before drinking ■ do not drink if there are any clumps ■ do not use more than 7 days ■ children 16 years of age or under: ask a doctor
<b>Warnings</b> <b>Allergy alert:</b> Do not use if you are allergic to polyethylene glycol <b>Do not use</b> if you have kidney disease, except under the advice and supervision of a doctor <b>Ask a doctor before use if you have</b> ■ nausea, vomiting or abdominal pain ■ a sudden change in bowel habits that lasts over 2 weeks ■ irritable bowel syndrome <b>Ask a doctor or pharmacist before use if you are taking a prescription drug</b> <b>When using this product</b> you may have loose, watery, more frequent stools <b>Stop use and ask a doctor if</b> ■ you have rectal bleeding or your nausea, bloating, cramping or abdominal pain gets worse. These may be signs of a serious condition. ■ you get diarrhea ■ you need to use a laxative for longer than 1 week	<b>Other information</b> ■ store at 20° - 25°C (68° - 77°F) ■ tamper-evident: do not use if foil is open or broken <b>Inactive ingredients</b> none
<b>Questions or comments?</b> 1-800-MiraLAX (1-800-647-2529) Bayer, the Bayer Cross, Mix-In Pax and MiraLAX are registered trademarks of Bayer. © 2021 Bayer. Dist by: Bayer HealthCare LLC Whippany, NJ 07981	00000000 <b>Bayer</b>

FOLD AT LINE  
TEAR AT ARROW

# MiraLAX<sup>®</sup>

Polyethylene Glycol 3350, Powder for Solution, Osmotic Laxative

## Mix-In Pax<sup>®</sup> Travel Size

- Relieves Occasional Constipation/Irregularity
- Softens Stool

1 DOSE

UNFLAVORED  
POWDER  
GRIT FREE

NET WT 0.5 OZ (17 g)

#1 DOCTOR RECOMMENDED BRAND

Actual Size 100%

FDA38900-2

DRUG FACTS INFO <small>(updated 5/18/18)</small>		
CATEGORY	REQUIRED	ACTUAL IN FILE
Drug Facts Title	>8 pt. **	9 pt.
Drug Facts Continued	8 pt.	8 pt.
Headings*	8 pt.-bold italic*	8 pt.
Subheadings	≥6 pt.	6 pt.
Body Text	≥6 pt.	6 pt.
Bullets	5 pt.	5 pt.
Leading	≥0.5 pt.	0.5 pt.
Hair lines	0.5 pt rule	0.5 pt.
Box and Barlines†	>0.5 pt rule	1 pt.
Characters Per Inch:	No more than 39	≤39

\* Headings are to be at least 2pts larger than Body Text.  
 \*\* Drug Facts Title to be larger than all other type size used in DFP  
 † FDA Recommends 2.5pt rule

**Sample-Not For Sale**

- **Unflavored**
- **Sugar Free**
- **Dissolves in any Beverage**

Drug Facts	Purpose
<b>Active ingredient (in each dose)</b> Polyethylene Glycol 3350, 17 g.....Osmotic Laxative	
<b>Use</b> ■ relieves occasional constipation (irregularity) ■ generally produces a bowel movement in 1 to 3 days	
<b>Warnings</b> <b>Allergy alert:</b> Do not use if you are allergic to polyethylene glycol <b>Do not use</b> if you have kidney disease, except under the advice and supervision of a doctor <b>Ask a doctor before use if you have</b> ■ nausea, vomiting or abdominal pain ■ a sudden change in bowel habits that lasts over 2 weeks ■ irritable bowel syndrome <b>Ask a doctor or pharmacist before use if you are taking a prescription drug</b> <b>When using this product</b> you may have loose, watery, more frequent stools <b>Stop use and ask a doctor if</b> ■ you have rectal bleeding or your nausea, bloating, cramping or abdominal pain gets worse. These may be signs of a serious condition. ■ you get diarrhea ■ you need to use a laxative for longer than 1 week	

Drug Facts (continued)
If pregnant or breast-feeding, ask a health professional before use. <b>Keep out of reach of children.</b> In case of overdose, get medical help or contact a Poison Control Center right away.
<b>Directions</b> ■ do not take more than directed unless advised by your doctor ■ adults and children 17 years of age and older: ■ use once a day ■ stir and dissolve one packet of powder (17 g) in any 4 to 8 ounces of beverage (cold, hot or room temperature) then drink ■ do not combine with starch-based thickeners used for difficulty swallowing ■ ensure that the powder is fully dissolved before drinking ■ do not drink if there are any clumps ■ do not use more than 7 days ■ children 16 years of age or under: ask a doctor
<b>Other information</b> ■ store at 20° - 25°C (68° - 77°F) ■ tamper-evident: do not use if foil is open or broken
<b>Inactive ingredients</b> none
<b>Questions or comments?</b> 1-800-MiraLAX (1-800-647-2529)

Bayer, the Bayer Cross, Mix-In Pax and MiraLAX are registered trademarks of Bayer.  
© 2021 Bayer.  
Dist by: Bayer HealthCare LLC,  
Whippany, NJ 07981  
00000 **Bayer**



**MiraLAX**  
Polyethylene Glycol 3350, Powder for Solution, Osmotic Laxative

**Mix-In Pax** Travel Size

- Relieves Occasional Constipation/Irregularity
- Softens Stool

UNFLAVORED POWDER GRIT FREE

1 DOSE

NET WT 0.5 OZ (17 g)

**Actual Size 100%**

FDA38765-01

DRUG FACTS INFO <small>(updated 5/18/18)</small>		
CATEGORY	REQUIRED	ACTUAL IN FILE
Drug Facts Title	>8 pt **	9 pt
Drug Facts Continued	8 pt	8 pt
Headings <sup>†</sup>	8 pt-bold italic <sup>†</sup>	8 pt
Subheadings	≥6 pt	6 pt
Body Text	≥6 pt	6 pt
Bullets	5 pt	5 pt
Leading	≥0.5 pt	0.5 pt
Hairlines	0.5 pt rule	0.5 pt
Box and Bar lines <sup>†</sup>	>0.5 pt rule	1 pt
Characters Per Inch:	No more than 39	≤39

<sup>†</sup> Headings are to be at least 2pts larger than Body Text.  
<sup>\*\*</sup> Drug Facts Title to be larger than all other type size used in DFP  
<sup>††</sup> FDA Recommends 2.5pt rule

**Sample-Not For Sale**

- **Unflavored**
- **Sugar Free**
- **Dissolves in any Beverage**

<p><b>Drug Facts</b></p> <p><b>Active ingredient (in each dose)</b> Purpose Polyethylene Glycol 3350, 17 g.....Osmotic Laxative</p> <p><b>Use</b></p> <ul style="list-style-type: none"> <li>■ relieves occasional constipation (irregularity)</li> <li>■ generally produces a bowel movement in 1 to 3 days</li> </ul> <p><b>Warnings</b></p> <p><b>Allergy alert:</b> Do not use if you are allergic to polyethylene glycol</p> <p><b>Do not use</b> if you have kidney disease, except under the advice and supervision of a doctor</p> <p><b>Ask a doctor before use if you have</b></p> <ul style="list-style-type: none"> <li>■ nausea, vomiting or abdominal pain</li> <li>■ a sudden change in bowel habits that lasts over 2 weeks</li> <li>■ irritable bowel syndrome</li> </ul> <p><b>Ask a doctor or pharmacist before use if you are taking a prescription drug</b></p> <p><b>When using this product</b> you may have loose, watery, more frequent stools</p> <p><b>Stop use and ask a doctor if</b></p> <ul style="list-style-type: none"> <li>■ you have rectal bleeding or your nausea, bloating, cramping or abdominal pain gets worse. These may be signs of a serious condition.</li> <li>■ you get diarrhea</li> <li>■ you need to use a laxative for longer than 1 week</li> </ul>	<p><b>Drug Facts (continued)</b></p> <p><b>If pregnant or breast-feeding</b>, ask a health professional before use. <b>Keep out of reach of children.</b> In case of overdose, get medical help or contact a Poison Control Center right away.</p> <p><b>Directions</b></p> <ul style="list-style-type: none"> <li>■ <b>do not take more than directed unless advised by your doctor</b></li> <li>■ adults and children 17 years of age and older: <ul style="list-style-type: none"> <li>■ use once a day</li> <li>■ stir and dissolve one packet of powder (17 g) in any 4 to 8 ounces of beverage (cold, hot or room temperature) then drink</li> </ul> </li> <li>■ do not combine with starch-based thickeners used for difficulty swallowing</li> <li>■ ensure that the powder is fully dissolved before drinking</li> <li>■ do not drink if there are any clumps</li> <li>■ do not use more than 7 days</li> <li>■ children 16 years of age or under: ask a doctor</li> </ul> <p><b>Other information</b></p> <ul style="list-style-type: none"> <li>■ store at 20° - 25°C (68° - 77°F)</li> <li>■ tamper-evident: do not use if foil is open or broken</li> </ul> <p><b>Inactive ingredients</b> none</p> <p><b>Questions or comments?</b> 1-800-MiraLAX (1-800-647-2529)</p> <p>Bayer, the Bayer Cross, Mix-In Pax and MiraLAX are registered trademarks of Bayer. © 2021 Bayer. Dist by: Bayer HealthCare LLC, Whippany, NJ 07981</p> <p style="text-align: right;">00000000 <b>Bayer</b></p>
--	--



**MiraLAX**<sup>®</sup>  
*Polyethylene Glycol 3350, Powder for Solution, Osmotic Laxative*

**Mix-In Pax**<sup>®</sup> Travel Size

- **Relieves Occasional Constipation/Irregularity**
- **Softens Stool**

UNFLAVORED  
**POWDER**  
GRIT FREE

1 DOSE

NET WT 0.5 OZ (17 g)

#1 DOCTOR RECOMMENDED BRAND

**Actual Size 100%**

FDA38899-2

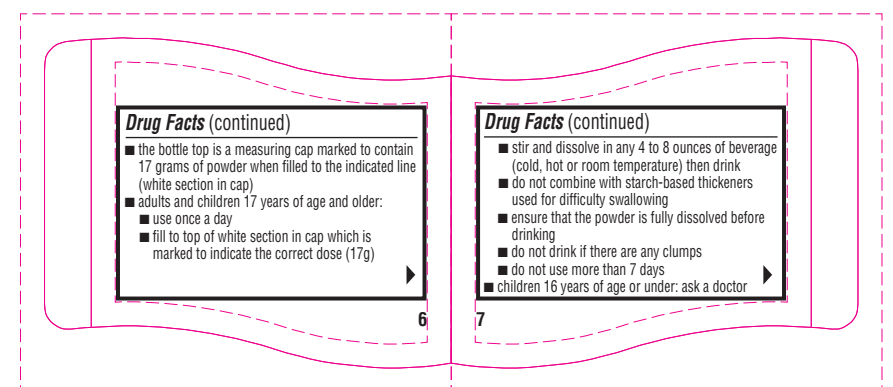
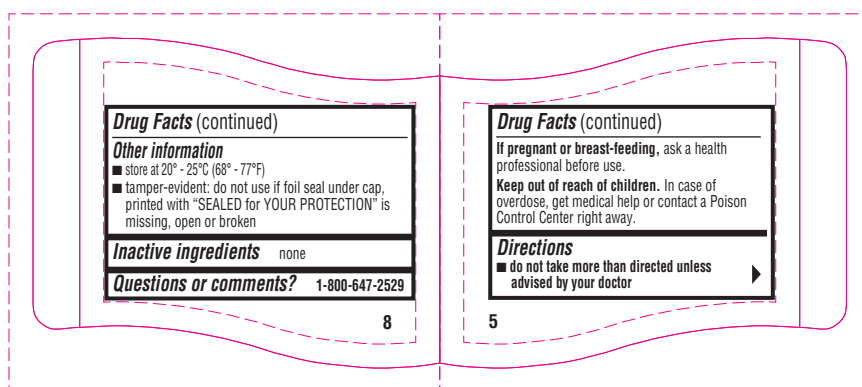
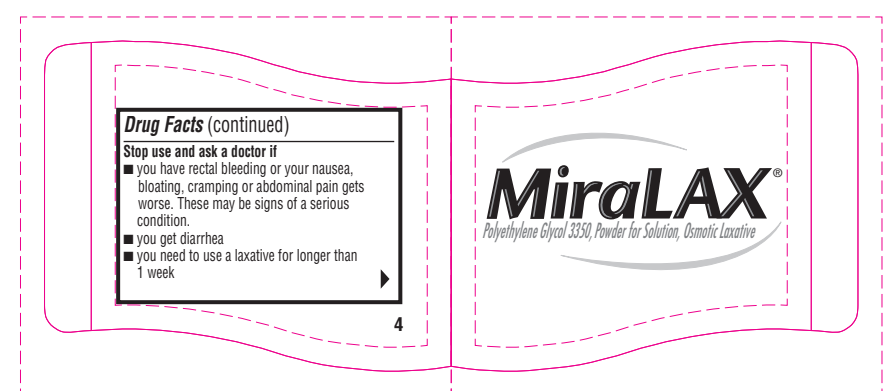
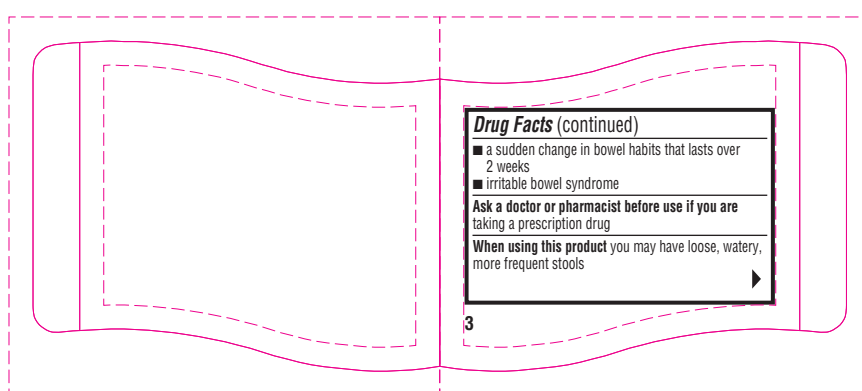
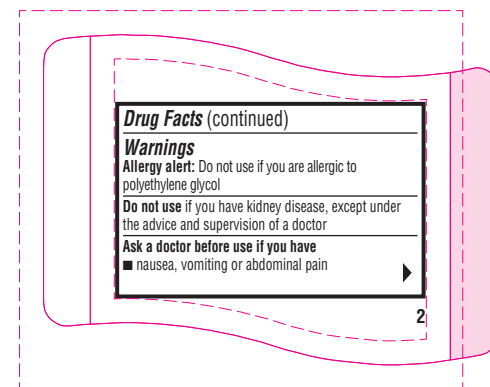
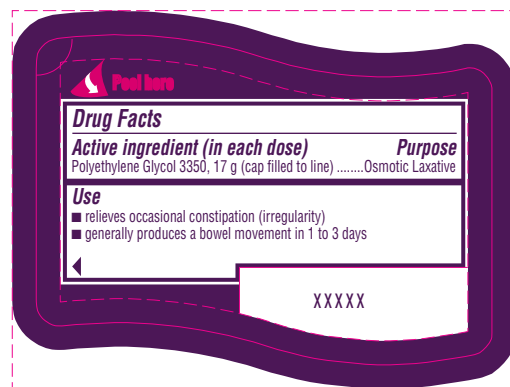
DRUG FACTS INFO <small>(updated 5/18/18)</small>		
CATEGORY	REQUIRED	ACTUAL IN FILE
Drug Facts Title	>8 pt. **	9 pt.
Drug Facts Continued	8 pt.	8 pt.
Headings <sup>†</sup>	8 pt.-bold italic <sup>†</sup>	8 pt.
Subheadings	≥6 pt.	6 pt.
Body Text	≥6 pt.	6 pt.
Bullets	5 pt.	5 pt.
Leading	≥0.5 pt.	0.5 pt.
Headlines	0.5 pt. rule	0.5 pt.
Box and Bar lines <sup>†</sup>	>0.5 pt. rule	1 pt.
Characters Per Inch:	No more than 38	≤38

<sup>†</sup> Headings are to be at least 2pts larger than Body Text.  
<sup>\*\*</sup> Drug Facts Title to be larger than all other type size used in DFP  
<sup>†</sup> FDA Recommends 2.5pt rule



**Actual Size 100%**

FDA38830 - 1



**Actual Size 100%**

FDA-38829-1

DRUG FACTS INFO (updated 5/18/18)		
CATEGORY	REQUIRED	ACTUAL IN FILE
Drug Facts Title	>8 pt.**	9 pt.
Drug Facts Continued	8 pt.	8 pt.
Headings*	8 pt; bold italic*	8 pt.
Subheadings	≥6 pt.	6 pt.
Body Text	≥6 pt.	6 pt.
Bullets	5 pt.	5 pt.
Leading	≥0.5 pt.	0.15 - 0.5 pt.
Hairlines	0.5 pt. rule	0.5 pt.
Box and Barlines†	>0.5 pt. rule	1.5pt / 2.5 pt.
Characters Per Inch:	No more than 39	≤39

\* Headings are to be at least 2pts larger than Body Text.  
\*\* Drug Facts Title to be larger than all other type size used in DFP  
† FDA Recommends 2.5pt rule



**Fill here**

**Drug Facts**

Active ingredient (in each dose)	Purpose
Polyethylene Glycol 3350, 17 g (cap filled to line) .....	Osmotic Laxative

**Use**

- relieves occasional constipation (irregularity)
- generally produces a bowel movement in 1 to 3 days

**Warnings**

**Allergy alert:** Do not use if you are allergic to polyethylene glycol

**Do not use** if you have kidney disease, except under the advice and supervision of a doctor

**Ask a doctor before use if you have**

- nausea, vomiting or abdominal pain
- a sudden change in bowel habits that lasts over 2 weeks
- irritable bowel syndrome

**Ask a doctor or pharmacist before use if you are taking a prescription drug**

**When using this product** you may have loose, watery, more frequent stools

• **Sugar Free**

00000

**Drug Facts (continued)**

- ensure that the powder is fully dissolved before drinking
- do not drink if there are any clumps
- do not use more than 7 days
- children 16 years of age or under: ask a doctor

**Other information**

- store at 20° - 25°C (68° - 77°F)
- tamper-evident: do not use if foil seal under cap, printed with "SEALED for YOUR PROTECTION" is missing, open or broken

**Inactive ingredients** none

**Questions or comments?**  
1-800-MiraLAX (1-800-647-2529)

**Drug Facts (continued)**

**Stop use and ask a doctor if**

- you have rectal bleeding or your nausea, bloating, cramping or abdominal pain gets worse. These may be signs of a serious condition.
- you get diarrhea
- you need to use a laxative for longer than 1 week

**If pregnant or breast-feeding**, ask a health professional before use.

**Keep out of reach of children.** In case of overdose, get medical help or contact a Poison Control Center right away.

**Directions**

- do not take more than directed unless advised by your doctor
- the bottle top is a measuring cap marked to contain 17 grams of powder when filled to the indicated line (white section in cap)
- adults and children 17 years of age and older:
  - use once a day
  - fill to top of white section in cap which is marked to indicate the correct dose (17g)
  - stir and dissolve in any 4 to 8 ounces of beverage (cold, hot or room temperature) then drink
  - do not combine with starch-based thickeners used for difficulty swallowing

**Actual Size 100%**

FDA38836-1

DRUG FACTS INFO (updated 5/18/18)		
CATEGORY	REQUIRED	ACTUAL IN FILE
Drug Facts Title	>8 pt **	9 pt
Drug Facts Continued	8 pt	8 pt
Headings*	8 pt-bold italic*	8 pt
Subheadings	≥6 pt	6 pt
Body Text	≥6 pt	6 pt
Bullets	5 pt	5 pt
Leading	≥0.5 pt	0.5 pt
Hairlines	0.5 pt rule	0.5 pt
Box and Barlines†	>0.5 pt rule	1.5 - 2.5 pt
Characters Per Inch:	No more than 39	≤39

\* Headings are to be at least 2pts larger than Body Text.  
\*\* Drug Facts Title to be larger than all other type size used in DFP  
† FDA Recommends 2.5pt rule



**Actual Size 100%**

FDA38838 - 0

<b>Drug Facts</b>		<b>Drug Facts (continued)</b>	
<b>Active ingredient (in each dose) Purpose</b> Polyethylene Glycol 3350, 17 g (cap filled to line).....Osmotic Laxative		<b>Keep out of reach of children.</b> In case of overdose, get medical help or contact a Poison Control Center right away.	
<b>Use</b> ■ relieves occasional constipation (irregularity) ■ generally produces a bowel movement in 1 to 3 days		<b>Directions</b> ■ do not take more than directed unless advised by your doctor ■ the bottle top is a measuring cap marked to contain 17 grams of powder when filled to the indicated line (white section in cap) ■ adults and children 17 years of age and older: ■ use once a day ■ fill to top of white section in cap which is marked to indicate the correct dose (17g) ■ stir and dissolve in any 4 to 8 ounces of beverage (cold, hot or room temperature) then drink ■ do not combine with starch-based thickeners used for difficulty swallowing ■ ensure that the powder is fully dissolved before drinking ■ do not drink if there are any clumps ■ do not use more than 7 days ■ children 16 years of age or under: ask a doctor	
<b>Warnings</b> <b>Allergy alert:</b> Do not use if you are allergic to polyethylene glycol <b>Do not use</b> if you have kidney disease, except under the advice and supervision of a doctor <b>Ask a doctor before use if you have</b> ■ nausea, vomiting or abdominal pain ■ a sudden change in bowel habits that lasts over 2 weeks ■ irritable bowel syndrome <b>Ask a doctor or pharmacist before use if you are</b> taking a prescription drug <b>When using this product</b> you may have loose, watery, more frequent stools <b>Stop use and ask a doctor if</b> ■ you have rectal bleeding or your nausea, bloating, cramping or abdominal pain gets worse. These may be signs of a serious condition. ■ you get diarrhea ■ you need to use a laxative for longer than 1 week <b>If pregnant or breast-feeding,</b> ask a health professional before use.		<b>Other information</b> ■ store at 20° - 25°C (68° - 77°F) ■ tamper-evident: do not use if foil seal under cap, printed with "SEALED for YOUR PROTECTION" is missing, open or broken	
		<b>Inactive ingredients</b> none	
		<b>Questions or comments?</b> 1-800-MiraLAX (1-800-647-2529)	
		• Sugar Free 00000000	

**Actual Size 100%**

FDA38839 - O

DRUG FACTS INFO (updated 5/18/18)		
CATEGORY	REQUIRED	ACTUAL IN FILE
Drug Facts Title	>8 pt **	8 pt
Drug Facts Continued	8 pt	8 pt
Headings*	8 pt-bold italic*	8 pt
Subheadings	≥6 pt	6 pt
Body Text	≥6 pt	6 pt
Bullets	5 pt	5 pt
Leading	≥0.5 pt	6.5 pt
Hair lines	0.5 pt rule	.5 pt
Box and Barlines†	>0.5 pt rule	2.5 pt
Characters Per Inch:	No more than 39	≤ 39

\* Headings are to be at least 2pts larger than Body Text.  
\*\* Drug Facts Title to be larger than all other type size used in DFP  
† FDA Recommends 2.5pt rule



**Actual Size 100%**

FDA38840-0

<b>Drug Facts</b>		<b>Drug Facts (continued)</b>	
<b>Active ingredient (in each dose) Purpose</b> Polyethylene Glycol 3350, 17 g (cap filled to line).....Osmotic Laxative		<b>Keep out of reach of children.</b> In case of overdose, get medical help or contact a Poison Control Center right away.	
<b>Use</b> ■ relieves occasional constipation (irregularity) ■ generally produces a bowel movement in 1 to 3 days		<b>Directions</b> ■ do not take more than directed unless advised by your doctor ■ the bottle top is a measuring cap marked to contain 17 grams of powder when filled to the indicated line (white section in cap) ■ adults and children 17 years of age and older: ■ use once a day ■ fill to top of white section in cap which is marked to indicate the correct dose (17g) ■ stir and dissolve in any 4 to 8 ounces of beverage (cold, hot or room temperature) then drink ■ do not combine with starch-based thickeners used for difficulty swallowing ■ ensure that the powder is fully dissolved before drinking ■ do not drink if there are any clumps ■ do not use more than 7 days ■ children 16 years of age or under: ask a doctor	
<b>Warnings</b> <b>Allergy alert:</b> Do not use if you are allergic to polyethylene glycol <b>Do not use</b> if you have kidney disease, except under the advice and supervision of a doctor <b>Ask a doctor before use if you have</b> ■ nausea, vomiting or abdominal pain ■ a sudden change in bowel habits that lasts over 2 weeks ■ irritable bowel syndrome <b>Ask a doctor or pharmacist before use if you are taking a prescription drug</b> <b>When using this product</b> you may have loose, watery, more frequent stools <b>Stop use and ask a doctor if</b> ■ you have rectal bleeding or your nausea, bloating, cramping or abdominal pain gets worse. These may be signs of a serious condition. ■ you get diarrhea ■ you need to use a laxative for longer than 1 week <b>If pregnant or breast-feeding,</b> ask a health professional before use.		<b>Other information</b> ■ store at 20° - 25°C (68° - 77°F) ■ tamper-evident: do not use if foil seal under cap, printed with "SEALED for YOUR PROTECTION" is missing, open or broken	
		<b>Inactive ingredients</b> none	
		<b>Questions or comments?</b> 1-800-MiraLAX (1-800-647-2529)	
		• Sugar Free      00000000	

**Actual Size 100%**

FDA38841 - 1

DRUG FACTS INFO (updated 5/18/18)		
CATEGORY	REQUIRED	ACTUAL IN FILE
Drug Facts Title	>8 pt.**	9 pt.
Drug Facts Continued	8 pt.	8 pt.
Headings*	8 pt.-bold/italic*	8 pt.
Subheadings	≥6 pt.	6 pt.
Body Text	≥6 pt.	6 pt.
Bullets	5 pt.	5 pt.
Leading	≥0.5 pt.	0.5 pt.
Hairlines	0.5 pt. rule	0.5 pt.
Box and Barlines†	>0.5 pt. rule	1.5 - 2.5 pt.
Characters Per Inch:	No more than 39	≤ 39

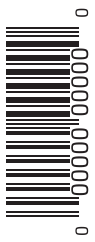
\* Headings are to be at least 2pts larger than Body Text.  
\*\* Drug Facts Title to be larger than all other type size used in DPP  
† FDA recommends 2.5pt rule



**Actual Size 100%**

FDA38895-1

• **Sugar Free**

<b>Drug Facts</b>		<b>Drug Facts (continued)</b>	
<b>Active ingredient (in each dose)</b> Polyethylene Glycol 3350, 17 g (cap filled to line).....Osmotic Laxative	<b>Purpose</b>	If <b>pregnant or breast-feeding</b> , ask a health professional before use. <b>Keep out of reach of children.</b> In case of overdose, get medical help or contact a Poison Control Center right away.	
<b>Use</b> ■ relieves occasional constipation (irregularity) ■ generally produces a bowel movement in 1 to 3 days		<b>Directions</b> ■ <b>do not take more than directed unless advised by your doctor</b> ■ the bottle top is a measuring cap marked to contain 17 grams of powder when filled to the indicated line (white section in cap) ■ adults and children 17 years of age and older: ■ use once a day ■ fill to top of white section in cap which is marked to indicate the correct dose (17g) ■ stir and dissolve in any 4 to 8 ounces of beverage (cold, hot or room temperature) then drink ■ do not combine with starch-based thickeners used for difficulty swallowing ■ ensure that the powder is fully dissolved before drinking ■ do not drink if there are any clumps ■ do not use more than 7 days ■ children 16 years of age or under: ask a doctor	
<b>Warnings</b> <b>Allergy alert:</b> Do not use if you are allergic to polyethylene glycol <b>Do not use</b> if you have kidney disease, except under the advice and supervision of a doctor <b>Ask a doctor before use if you have</b> ■ nausea, vomiting or abdominal pain ■ a sudden change in bowel habits that lasts over 2 weeks ■ <b>irritable bowel syndrome</b>		<b>Other information</b> ■ store at 20° - 25°C (68° - 77°F) ■ tamper-evident: do not use if foil seal under cap, printed with "SEALED for YOUR PROTECTION" is missing, open or broken	
	<b>Ask a doctor or pharmacist before use if you are taking a prescription drug</b> <b>When using this product</b> you may have loose, watery, more frequent stools <b>Stop use and ask a doctor if</b> ■ you have rectal bleeding or your nausea, bloating, cramping or abdominal pain gets worse. These may be signs of a serious condition. ■ you get diarrhea ■ you need to use a laxative for longer than 1 week	<b>Inactive ingredients</b> none	
Bayer, the Bayer Cross, and MiraLAX are registered trademarks of Bayer. © 2021 Bayer. Dist by: Bayer HealthCare LLC, Whippany, NJ 07981		<b>Questions or comments?</b> 1-800-MiraLAX (1-800-647-2529)	
Bayer		00000000	

**Actual Size 100%**

FDA38896-2

DRUG FACTS INFO (updated 5/18/18)		
CATEGORY	REQUIRED	ACTUAL IN FILE
Drug Facts Title	>8 pt **	9 pt
Drug Facts Continued	8 pt	8 pt
Headings*	8 pt-bold italic*	8 pt
Subheadings	≥6 pt	6 pt
Body Text	≥6 pt	6 pt
Bullets	5 pt	5 pt
Leading	≥0.5 pt	0.5 pt
Hairlines	0.5 pt rule	0.5 pt
Box and Barlines†	>0.5 pt rule	1.5 to 2.5 pt
Characters Per Inch:	No more than 39	≤39

\* Headings are to be at least 2pts larger than Body Text.  
\*\* Drug Facts Title to be larger than all other type size used in DFP  
† FDA Recommends 2.5pt rule



**Actual Size 100%**

FDA38897-1

<b>Drug Facts</b>		<b>Drug Facts (continued)</b>	
<b>Active ingredient (in each dose) Purpose</b> Polyethylene Glycol 3350, 17 g (cap filled to line).....Osmotic Laxative		<b>Keep out of reach of children.</b> In case of overdose, get medical help or contact a Poison Control Center right away.	
<b>Use</b> ■ relieves occasional constipation (irregularity) ■ generally produces a bowel movement in 1 to 3 days		<b>Directions</b> ■ do not take more than directed unless advised by your doctor ■ the bottle top is a measuring cap marked to contain 17 grams of powder when filled to the indicated line (white section in cap) ■ adults and children 17 years of age and older: ■ use once a day ■ fill to top of white section in cap which is marked to indicate the correct dose (17g) ■ stir and dissolve in any 4 to 8 ounces of beverage (cold, hot or room temperature) then drink ■ do not combine with starch-based thickeners used for difficulty swallowing ■ ensure that the powder is fully dissolved before drinking ■ do not drink if there are any clumps ■ do not use more than 7 days ■ children 16 years of age or under: ask a doctor	
<b>Warnings</b> <b>Allergy alert:</b> Do not use if you are allergic to polyethylene glycol <b>Do not use</b> if you have kidney disease, except under the advice and supervision of a doctor <b>Ask a doctor before use if you have</b> ■ nausea, vomiting or abdominal pain ■ a sudden change in bowel habits that lasts over 2 weeks ■ irritable bowel syndrome <b>Ask a doctor or pharmacist before use if you are taking a prescription drug</b> <b>When using this product</b> you may have loose, watery, more frequent stools <b>Stop use and ask a doctor if</b> ■ you have rectal bleeding or your nausea, bloating, cramping or abdominal pain gets worse. These may be signs of a serious condition. ■ you get diarrhea ■ you need to use a laxative for longer than 1 week <b>If pregnant or breast-feeding,</b> ask a health professional before use.		<b>Other information</b> ■ store at 20° - 25°C (68° - 77°F) ■ tamper-evident: do not use if foil seal under cap, printed with "SEALED for YOUR PROTECTION" is missing, open or broken	
<b>Inactive ingredients</b> none		<b>Questions or comments?</b> 1-800-MiraLAX (1-800-647-2529)	
• Sugar Free		00000000	

**Actual Size 100%**

FDA38898-1

DRUG FACTS INFO (updated 5/18/18)		
CATEGORY	REQUIRED	ACTUAL IN FILE
Drug Facts Title	>8 pt.**	9 pt.
Drug Facts Continued	8 pt.	8 pt.
Headings*	8 pt.-bold italic*	8 pt.
Subheadings	≥6 pt.	6 pt.
Body Text	≥6 pt.	6 pt.
Bullets	5 pt.	5 pt.
Leading	≥0.5 pt.	0.5 pt.
Hairlines	0.5 pt. rule	0.5 pt.
Box and Barlines†	>0.5 pt. rule	1.5 - 2.5 pt.
Characters Per Inch:	No more than 39	≤ 39

\* Headings are to be at least 2pts larger than Body Text.  
\*\* Drug Facts Title to be larger than all other type size used in DFP  
† FDA recommends 2.5pt. rule



**Actual Size 100%**

FDA38770-1

DRUG FACTS INFO (Updated 5/18/18)		
CATEGORY	REQUIRED	ACTUAL IN FILE
Drug Facts Title	>8 pt. **	9 pt.
Drug Facts Continued	8 pt.	8 pt.
Headings*	8 pt. bold (its ic)†	8 pt.
Subheadings	>6 pt.	6 pt.
Body Text	>6 pt.	6 pt.
Bullets	5 pt.	5 pt.
Leading	>0.5 pt.	0.5 pt.
Headlines	0.5 pt. rule	0.5 pt.
Box and Barline††	>0.5 pt. rule	2.5 pt.
Characters Per Inch	No more than 30	≥30

\* Headings are to be at least 20% larger than Body Text.  
†† Drug Facts Title to be larger than all other text used in ODP.  
† FDA Recommendation: 2.5pt. rule



**Drug Facts**

<b>Active ingredient (in each dose)</b> Polyethylene Glycol 3350, 17 g	<b>Purpose</b> Osmotic Laxative
<b>Use</b> ■ relieves occasional constipation (irregularity) ■ generally produces a bowel movement in 1 to 3 days	
<b>Warnings</b> <b>Allergy alert:</b> Do not use if you are allergic to polyethylene glycol. <b>Do not use</b> if you have kidney disease, except under the advice and supervision of a doctor. <b>Ask a doctor before use if you have</b> ■ a sudden change in bowel habits that lasts over 2 weeks ■ irritable bowel syndrome <b>Ask a doctor or pharmacist before use if you are taking a prescription drug</b>	
<b>When using this product</b> you may have loose, watery, more frequent stools. <b>Stop use and ask a doctor if</b> ■ you have rectal bleeding or your nausea, bloating, cramping or abdominal pain gets worse. These may be signs of a serious condition. ■ you get diarrhea ■ you need to use a laxative for longer than 1 week	

**Drug Facts (continued)**  
If pregnant or breast-feeding, ask a health professional before use. Keep out of reach of children. In case of overdose, get medical help or contact a Poison Control Center right away.

**Directions**  
■ do not take more than directed unless advised by your doctor  
■ adults and children 17 years of age and older:  
■ use once a day  
■ stir and dissolve one packet of powder (17 g) in any 4 to 8 ounces of beverage (cold, hot or room temperature) then drink.  
■ do not combine with starch-based thickeners used for difficulty swallowing  
■ ensure that the powder is fully dissolved before drinking  
■ do not drink if there are any clumps  
■ do not use more than 7 days  
■ children 16 years of age or under: ask a doctor

**Other information**  
■ store at 20° - 25° C (68° - 77° F)  
■ tamper-evident: do not use if foil is open or broken

**Inactive ingredients** none

**Questions or comments?**  
1-800-MiraLAX (1-800-647-2529)

Bayer, the Bayer Cross, Mix-In Pax and MiraLAX are registered trademarks of Bayer.  
© 2021 Bayer  
Dist by: Bayer HealthCare LLC, Whippany, NJ 07981

10 PRE-MEASURED SINGLE DOSES  
10 PACKETS  
NET WT 0.5 OZ (17g) EACH

10 Single Doses

**MiraLAX**  
Polyethylene Glycol 3350, Powder for Solution, Osmotic Laxative

**MiraLAX**  
Mix-In Pax®

- Unflavored
- Sugar Free
- Dissolves in Any Beverage

• Relieves Occasional Constipation/Irregularity  
• Softens Stool

10 ONCE-DAILY DOSES

UNFLAVORED POWDER GRIT FREE

10 PACKETS  
NET WT 0.5 OZ (17g) EACH

Unflavored Powder Dissolves in ANY Beverage!

Lot Code  
Exp Date

0 00000 00000 0

Actual Size 100%

FDA38769-1

DRUG FACTS INFO (updated 5/18/16)		
CATEGORY	REQUIRED	ACTUAL IN FILE
Drug Facts Title	>= 8 pt. <sup>1</sup>	9 pt.
Drug Facts Continued	8 pt.	8 pt.
Headings <sup>2</sup>	8 pt.-bold (14 pt.) <sup>2</sup>	8 pt.
Subheadings	>= 6 pt.	6 pt.
Body Text	>= 6 pt.	6 pt.
Bullets	5 pt.	5 pt.
Leading	>= 0.5 pt.	0.5 pt.
Headlines	0.5 pt. rule	0.5 pt.
Box and Barlines <sup>3</sup>	>= 0.5 pt. rule	2.5 pt.
Characters Per Inch:	No more than 35	<= 35

<sup>1</sup> Headings are to be at least 12pt. larger than Body Text.  
<sup>2</sup> Drug Facts Title can be larger than all other type used in DFP.  
<sup>3</sup> FDA recommends 2.5pt. rule.



**Actual Size 100%**

FDA38771-1

DRUG FACTS INFO (Updated 5/18/18)		
CATEGORY	REQUIRED	ACTUAL IN FILE
Drug Facts Title	>8 pt **	8 pt
Drug Facts Continued	8 pt	8 pt
Warnings†	8 pt (add table)	8 pt
Substantive	>8 pt	8 pt
Body Text	>8 pt	8 pt
Bullets	5 pt	5 pt
Leading	>0.5 pt	0.5 pt
Footnote	0.5 pt (add)	0.5 pt
Box and Bar/Panel	>0.5 pt (add)	0.5 pt
Characters Per Inch	No more than 30†	<30

\* Headings are to be at least 20pt larger than Body Text.  
 \*\* Font size for the drug name that all other text was used in DTP.  
 † FDA Recommends 24 for text.



**Drug Facts**

**Active ingredient (in each dose)** Purpose  
Polyethylene Glycol 3350, 17 g Osmotic Laxative

**Use**  
Relieves occasional constipation (irregularity).  
Generally produces a bowel movement in 1 to 3 days.

**Warnings**  
Allergy alert: Do not use if you are allergic to polyethylene glycol.  
Do not use if you have kidney disease, except under the advice and supervision of a doctor.

**Ask a doctor before use if you have**  
• nausea, vomiting or abdominal pain  
• a sudden change in bowel habits that lasts over 2 weeks  
• irritable bowel syndrome

**Ask a doctor or pharmacist before use if you are taking a prescription drug.**

**When using this product** you may have loose, watery, more frequent stools.

**Stop use and ask a doctor if**  
• you have rectal bleeding or your nausea, bloating, cramping or abdominal pain gets worse. These may be signs of a serious condition.  
• you get diarrhea  
• you need to use a laxative for longer than 1 week

**Drug Facts (continued)**  
If pregnant or breast-feeding, ask a health professional before use. Keep out of reach of children. In case of overdose, get medical help or contact a Poison Control Center right away.

**Directions**  
• Do not take more than directed unless advised by your doctor.  
• Adults and children 17 years of age and older:  
• Use once a day.  
• Stir and dissolve one packet of powder (17 g) in any 4 to 8 ounces of beverage (cold, hot or room temperature) then drink.  
• Do not combine with starch-based thickeners used for difficulty swallowing.  
• Ensure that the powder is fully dissolved before drinking.  
• Do not drink if there are any clumps.  
• Do not use more than 7 days.  
• Children: 16 years of age or under: ask a doctor.

**Other information**  
• Store at 20° to 25° (68° to 77°).  
• Tamper-evident: do not use if foil is open or broken.

**Inactive ingredients** none

**Questions or comments?**  
1-800-MiraLAX (1-800-647-5529)

Bayer, the Bayer Cross, Mix-In Pax and MiraLAX are registered trademarks of Bayer.  
© 2021 Bayer.  
Mfg. by: Bayer HealthCare LLC, Whippany, NJ 07981  
00000



Actual Size 100%

FDA38772-0

DRUG FACTS INFO	Updated: 5/18/18	REQUIRED	ACTUAL IN FILE
Category			
Drug Facts Title	<8 pt***	8 pt	8 pt
Drug Facts Continued	8 pt	8 pt	8 pt
Directions*	8 pt (add text)*	8 pt	8 pt
Subheadings	<8 pt	8 pt	8 pt
Body Text	<8 pt	8 pt	8 pt
Bullets	8 pt	8 pt	8 pt
Lineing	<8 pt	8 pt	8 pt
Chemical	10.5 pt rule	10.5 pt	10.5 pt
Box and Barlines†	>8.5 pt rule	2.5 pt	2.5 pt
Characters Per Inch	No more than 38	<30	<30

\* Headings are to be at least 8pt larger than Body Text.  
\*\* Drug Facts Title no longer than 4 letters and use word "DRUG"  
† FDA Requirements 2.5pt rule



Drug Facts		Drug Facts (continued)	
<b>Active ingredient (in each dose)</b>	<b>Purpose</b>	<b>Warnings</b>	<b>Directions</b>
Polyethylene Glycol 3350, 17 g	Osmotic Laxative	<b>Allergy alert:</b> Do not use if you are allergic to polyethylene glycol.	<b>Do not take more than directed unless advised by your doctor.</b>
<b>Use</b>		<b>Do not use</b> if you have kidney disease, except under the advice and supervision of a doctor.	<b>Adults and children 17 years of age and older:</b>
Relieves occasional constipation (irregularity)		<b>Ask a doctor before use if you have:</b>	Use once a day.
Generally produces a bowel movement in 1 to 3 days.		Nausea, vomiting or abdominal pain	Stir and dissolve one packet of powder (17 g) in any 4 to 8 ounces of beverage (cold, hot or room temperature) then drink.
<b>Warnings</b>		Sudden change in bowel habits that lasts over 2 weeks	Do not combine with starch-based thickeners used for difficulty swallowing.
<b>Do not use</b> if you have kidney disease, except under the advice and supervision of a doctor.		Irritable bowel syndrome	Ensure that the powder is fully dissolved before drinking.
<b>Ask a doctor before use if you have:</b>		Ask a doctor or pharmacist before use if you are taking a prescription drug.	Do not drink if there are any clumps.
Nausea, vomiting or abdominal pain		<b>When using this product</b> you may have loose, watery, more frequent stools.	Do not use more than 7 days.
Sudden change in bowel habits that lasts over 2 weeks		<b>Stop use and ask a doctor if:</b>	Children 16 years of age or under: ask a doctor.
Irritable bowel syndrome		You have rectal bleeding or your nausea, bloating, cramping or abdominal pain gets worse. These may be signs of a serious condition.	<b>Other information</b>
Ask a doctor or pharmacist before use if you are taking a prescription drug.		You get diarrhea	Store at 20° - 25°C (68° - 77°F).
<b>When using this product</b> you may have loose, watery, more frequent stools.		You need to use a laxative for longer than 1 week.	Tamper-evident: do not use if foil is open or broken.
<b>Stop use and ask a doctor if:</b>			<b>Inactive ingredients</b> none.
You have rectal bleeding or your nausea, bloating, cramping or abdominal pain gets worse. These may be signs of a serious condition.			<b>Questions or comments?</b>
You get diarrhea			1-800-MiraLAX (1-800-547-2529)
You need to use a laxative for longer than 1 week.			

Bayer, the Bayer Cross, Mix-In Pax and MiraLAX are registered trademarks of Bayer.  
© 2021 Bayer.  
Dist. by: Bayer HealthCare LLC, Whippany, NJ 07981  
XXXXX

Bayer

• Unflavored • Sugar Free • Dissolves in Any Beverage



CONTAINS 24 ONCE-DAILY DOSES  
EACH PACKET CONTAINS ONE DOSE, NET WT 0.5 OZ (17g)

CONTAINS 24 ONCE-DAILY DOSES  
EACH PACKET CONTAINS ONE DOSE, NET WT 0.5 OZ (17g)

Lot/Exp Area

24 ONCE-DAILY DOSES  
24 PACKETS  
NET WT 0.5 OZ (17g)

OPEN HERE

Actual Size 100%

FDA38773-1

DRUG FACTS INFO	Updated 5/19/18	ACTUAL IN FILE
<b>CATEGORY</b>	<b>REQUIRED</b>	<b>ACTUAL IN FILE</b>
Drug Facts Title	1-8 pt **	9 pt
Drug Facts Continued	8 pt	9 pt
Headings	8 pt bold italic	9 pt
Subheadings	7 pt	7 pt
Body Text	7 pt	7 pt
Bullets	7 pt	7 pt
Linking	7 pt	7 pt
Headings	7 pt	7 pt
Body and Bullets	7 pt	7 pt
Characters Per Inch	No more than 30	30



**MiraLAX**  
Polyethylene Glycol 3350, Powder for Solution, Osmotic Laxative

Mix-In Pax

PATIENT SAMPLES NOT FOR SALE



**MiraLAX**  
Polyethylene Glycol 3350, Powder for Solution, Osmotic Laxative

Mix-In Pax

Travel Size



**MiraLAX**  
Polyethylene Glycol 3350, Powder for Solution, Osmotic Laxative

Mix-In Pax

PATIENT SAMPLES NOT FOR SALE



**MiraLAX**  
Polyethylene Glycol 3350, Powder for Solution, Osmotic Laxative

Mix-In Pax

• Unflavored • Sugar Free • Dissolves in Any Beverage

PATIENT SAMPLES NOT FOR SALE



**MiraLAX**  
Polyethylene Glycol 3350, Powder for Solution, Osmotic Laxative

Mix-In Pax

- Relieves Occasional Constipation/Irregularity
- Softens Stool

24 ONCE-DAILY DOSES





UNFLAVORED POWDER  
GRIT FREE

24 PACKETS  
NET WT 0.5 OZ (17g) EACH

Unflavored Powder Dissolves in ANY Beverage!

PATIENT SAMPLES NOT FOR SALE



**MiraLAX**  
Polyethylene Glycol 3350, Powder for Solution, Osmotic Laxative

Mix-In Pax

**Drug Facts**

**Active ingredient (in each dose)** Purpose  
Polyethylene Glycol 3350, 17 g.....Osmotic Laxative

**Use**

- relieves occasional constipation (irregularity)
- generally produces a bowel movement in 1 to 3 days

**Warnings**

**Allergy alert:** Do not use if you are allergic to polyethylene glycol

**Do not use** if you have kidney disease, except under the advice and supervision of a doctor

**Ask a doctor before use if you have**

- nausea, vomiting or abdominal pain
- a sudden change in bowel habits that lasts over 2 weeks
- irritable bowel syndrome

**Ask a doctor or pharmacist before use if you are taking a prescription drug**

**When using this product** you may have loose, watery, more frequent stools

**Stop use and ask a doctor if**

- you have rectal bleeding or your nausea, bloating, cramping or abdominal pain gets worse. These may be signs of a serious condition.
- you get diarrhea
- you need to use a laxative for longer than 1 week

**Directions**

**Do not take more than directed unless advised by your doctor**

- adults and children 17 years of age and older:
  - use once a day
  - stir and dissolve one packet of powder (17 g) in any 4 to 8 ounces of beverage (cold, hot or room temperature) then drink
- do not combine with starch-based thickeners used for difficulty swallowing
- ensure that the powder is fully dissolved before drinking
- do not drink if there are any clumps
- do not use more than 7 days
- children 16 years of age or under: ask a doctor

**Other information**

- store at 20° - 25° C (68° - 77° F)
- tamper-evident: do not use if foil is open or broken

**Inactive ingredients** none

**Questions or comments?**  
1-800-MiraLAX (1-800-647-2529)

Bayer, the Bayer Cross, Mix-In Pax and MiraLAX are registered trademarks of Bayer.  
© 2024 Bayer.  
Dist by: Bayer HealthCare LLC, Whippany, NJ 07981

Bayer  
00000

PATIENT SAMPLES NOT FOR SALE



**MiraLAX**  
Polyethylene Glycol 3350, Powder for Solution, Osmotic Laxative

Mix-In Pax

• Unflavored • Sugar Free • Dissolves in Any Beverage





24 ONCE-DAILY DOSES  
EACH PACKET CONTAINS ONE DOSE, NET WT 0.5 OZ (17g)

PATIENT SAMPLES NOT FOR SALE

24 ONCE-DAILY DOSES

24 PACKETS  
NET WT 0.5 OZ (17g)

OPEN HERE

PATIENT SAMPLES NOT FOR SALE

24 ONCE-DAILY DOSES  
EACH PACKET CONTAINS ONE DOSE, NET WT 0.5 OZ (17g)

Lot/Exp Area

PATIENT SAMPLES NOT FOR SALE

24 ONCE-DAILY DOSES  
EACH PACKET CONTAINS ONE DOSE, NET WT 0.5 OZ (17g)

Actual Size 100%

FDA38774-0

DRUG FACTS INFO (continued)		
CATEGORY	REMOVED	ACTUAL IN FILE
Drug Facts Title	14 pt	8 pt
Drug Facts Content	8 pt	8 pt
Headings	8 pt bold italic	8 pt
Subheadings	10 pt	7 pt
Body text	10 pt	7 pt
Bullets	9 pt	9 pt
Leading	10.5 pt	0.5 pt
Horlines	0.5 pt rule	0.5 pt
Box and Background	10.5 pt rule	2.5 pt
Character Pair Icons	No more than 30	100

\*Headings are to be at least 20pt larger than body text.  
\*\*Box and Background are to be at least 10pt larger than other text used in DDP  
\*\*\*Character Pairs are to be at least 10pt larger than other text used in DDP

-----  
**This is a representation of an electronic record that was signed electronically. Following this are manifestations of any and all electronic signatures for this electronic record.**  
-----

/s/  
-----

VALERIE S PRATT  
04/27/2021 05:32:42 PM