

## HIGHLIGHTS OF PRESCRIBING INFORMATION

These highlights do not include all the information needed to use Totect<sup>®</sup> safely and effectively. See full prescribing information for Totect<sup>®</sup>.

**Totect<sup>®</sup> Kit (dexrazoxane) for injection, for intravenous infusion only.**

**Initial U.S. Approval: 2007**

### -----INDICATIONS AND USAGE-----

- Totect<sup>®</sup> is indicated for the treatment of extravasation resulting from intravenous anthracycline chemotherapy. (1)

### -----DOSAGE AND ADMINISTRATION-----

- Vial contents must be mixed and diluted before use. (2.1)
- Administer Totect<sup>®</sup> once daily for 3 consecutive days. The first infusion should be initiated as soon as possible and within the first six hours after extravasation.

Recommended dose:	Maximum daily dose:
Day one: 1000 mg/m <sup>2</sup>	2000 mg
Day two: 1000 mg/m <sup>2</sup>	2000 mg
Day three: 500 mg/m <sup>2</sup>	1000 mg
- Reduce dose by 50% for patients with creatinine clearance < 40 mL/min. (2.2)

### -----DOSAGE FORMS AND STRENGTHS -----

- Totect<sup>®</sup> is packaged as an urgent treatment kit for single patient use. Each kit contains 1 or 4 vials of Totect<sup>®</sup> (dexrazoxane for injection) 500 mg and 1 or 4 vials of 50 mL diluent. (3)

### -----CONTRAINDICATIONS-----

None (4)

### -----WARNINGS AND PRECAUTIONS-----

- Myelosuppression: Dexrazoxane is associated with leukopenia, neutropenia, and thrombocytopenia. Perform hematological monitoring. (5.1)
- Use in Pregnancy: Fetal harm can occur when administered to a pregnant woman. Apprise women of potential harm to the fetus. (5.2)

### -----ADVERSE REACTIONS-----

The most common adverse reactions (≥16%) are nausea, pyrexia, injection site pain and vomiting. (6.1)

**To report SUSPECTED ADVERSE REACTIONS, contact Apricus Medical Information at 1-866-914-2922 or FDA at 1-800-FDA-1088 or [www.fda.gov/medwatch](http://www.fda.gov/medwatch)**

### -----USE IN SPECIFIC POPULATIONS-----

- Nursing Mothers: Discontinue drug or nursing, taking into consideration the importance of drug to the mother. (8.3)
- Renal impairment: Reduce the Totect<sup>®</sup> dose by 50% in patients with creatinine clearance values < 40 mL/min. (8.6)

**See 17 for PATIENT COUNSELING INFORMATION and FDA-approved patient labeling.**

**Revised: 4/2013**

**FULL PRESCRIBING INFORMATION:  
CONTENTS\***

- 1 INDICATIONS AND USAGE**
- 2 DOSAGE AND ADMINISTRATION**
  - 2.1 Recommended Dose
  - 2.2 Dose Modifications
  - 2.3 Directions for Mixing and Final Dilution
  - 2.4 Administration
- 3 DOSAGE FORMS AND STRENGTHS**
- 4 CONTRAINDICATIONS**
- 5 WARNINGS AND PRECAUTIONS**
  - 5.1 Myelosuppression
  - 5.2 Use in Pregnancy
- 6 ADVERSE REACTIONS**
  - 6.1 Clinical Trial Experience
- 7 DRUG INTERACTIONS**
- 8 USE IN SPECIAL POPULATIONS**
  - 8.1 Pregnancy
  - 8.3 Nursing Mothers
  - 8.4 Pediatric Use

- 8.5 Geriatric Use
- 8.6 Renal Impairment
- 10 OVERDOSAGE**
- 11 DESCRIPTION**
- 12 CLINICAL PHARMACOLOGY**
  - 12.1 Mechanism of Action
  - 12.3 Pharmacokinetics
- 13 NONCLINICAL TOXICOLOGY**
  - 13.1 Carcinogenesis, Mutagenesis, Impairment of Fertility
- 14 CLINICAL STUDIES**
- 15 REFERENCES**
- 16 HOW SUPPLIED/STORAGE AND HANDLING**
- 17 PATIENT COUNSELING INFORMATION**
  - 17.1 Myelosuppression
  - 17.2 Pregnancy
  - 17.3 FDA-approved Patient Labeling

\* Sections or subsections omitted from the Full Prescribing Information are not listed.

---

## FULL PRESCRIBING INFORMATION

### 1 INDICATIONS AND USAGE

Totect<sup>®</sup> is indicated for the treatment of extravasation resulting from intravenous anthracycline chemotherapy.

### 2 DOSAGE AND ADMINISTRATION

**Vial contents must be mixed and diluted before use.**

#### 2.1 Recommended Dose

Totect<sup>®</sup> should be given once daily for 3 consecutive days. The first infusion should be initiated as soon as possible and within the first six hours after extravasation.

The individual dosage is based on calculation of the Body Surface Area (BSA) up to a maximum dose of 2000 mg (each on Day 1 and 2) and 1000 mg (Day 3), corresponding to a BSA of 2 m<sup>2</sup>.

The recommended dose is:      Maximum daily dose:

Day one: 1000 mg/m<sup>2</sup>              2000 mg

Day two: 1000 mg/m<sup>2</sup>             2000 mg

Day three: 500 mg/m<sup>2</sup>            1000 mg

#### 2.2 Dose Modifications

The Totect<sup>®</sup> dose should be reduced by 50% in patients with creatinine clearance values < 40 mL/min.

#### 2.3 Directions for Mixing and Final Dilution

*Read this entire section carefully before mixing and diluting.*

*Aseptic technique should be used during preparation.*

Caution must be exercised when handling Totect<sup>®</sup> and preparing the mixed solution. [see *How Supplied/Storage and Handling (16)*]

Totect<sup>®</sup> should not be mixed or administered with any other drug during the infusion.

#### Preparation of Totect<sup>®</sup>

Step 1. Each vial of Totect<sup>®</sup> (dexrazoxane for injection) (500 mg) must first be mixed with 50 mL of the enclosed diluent. The resultant solution contains 10 mg/mL. This resultant solution should be used immediately (within 2 hours) after preparation. It contains no antibacterial preservative.

Step 2. Withdraw the recommended dose from the solution containing 10 mg/mL as prepared in Step 1 and further dilute into an infusion bag containing 1000 mL 0.9% Sodium Chloride. In order to obtain the required dose more than

one vial may be needed. Totect<sup>®</sup> must not be mixed with any other drugs.

The infusion bag should be used immediately after preparation. The product is stable for 4 hours from the time of preparation when stored below 25°C (77°F).

The solution of Totect<sup>®</sup> is slightly yellow.

Parenteral drug products should be inspected visually for particulate matter prior to administration, whenever solution and container permit. Solutions containing a precipitate should be discarded. Vials are for single use only. Unused solution should be discarded.

#### **2.4 Administration**

Totect<sup>®</sup> should not be mixed or administered with any other drug during the infusion. Administer as an intravenous infusion over 1 to 2 hours at room temperature and normal light conditions in a large caliber vein in an extremity/area other than the one affected by the extravasation. Cooling procedures such as ice packs, if used, should be removed from the extravasation area at least 15 minutes before Totect<sup>®</sup> administration in order to allow sufficient blood flow to the area of extravasation. Treatment on Day 2 and Day 3 should start at the same hour (+/- 3 hours) as on the first day.

### **3 DOSAGE FORMS AND STRENGTHS**

Totect<sup>®</sup> is packaged as an urgent treatment kit for single patient use. Each kit contains 1 or 4 vials of Totect<sup>®</sup> (dexrazoxane for injection) 500 mg and 1 or 4 vials of 50 mL diluent. Up to 10 vials of each may be needed to complete three days of treatment.

### **4 CONTRAINDICATIONS**

None.

### **5 WARNINGS AND PRECAUTIONS**

#### **5.1 Myelosuppression**

Treatment with Totect<sup>®</sup> is associated with leukopenia, neutropenia, and thrombocytopenia. Hematological monitoring should be performed.

#### **5.2 Use in Pregnancy**

Pregnancy Category D

Totect<sup>®</sup> can cause fetal harm when administered to a pregnant woman. There is

no adequate information about the use of Totect<sup>®</sup> in pregnant women. If this drug is used during pregnancy, or if the patient becomes pregnant while taking this drug, the patient should be apprised of the potential hazard to the fetus. [see *Use in Special Populations (8.1)*].

## 6 ADVERSE REACTIONS

### 6.1 Clinical Trials Experience

Because clinical trials are conducted under widely varying conditions, the adverse reaction rates observed cannot be directly compared to rates in other trials and may not reflect the rates observed in clinical practice.

In the clinical studies, Totect<sup>®</sup> was administered to patients also receiving chemotherapeutic agents for cancer, and the adverse reaction profile reflects the combination of Totect<sup>®</sup>, underlying disease, and already administered chemotherapy. The adverse reaction data reflect exposure to Totect<sup>®</sup> in 80 patients who received the first dose, 72 patients who received two doses, and 69 patients who received all three doses. Table 1 summarizes adverse reactions occurring with  $\geq 5\%$  frequency.

Table 1 Adverse Reactions Occurring at  $\geq 5\%$  Frequency

MedDRA System Organ Class (SOC) and Preferred term	Study 1 and 2 Combined (All causalities) N=80 (%)
Total number of patients with at least one event	68 (85)
General disorders and administration site conditions	46 (58)
Pyrexia	17 (21)
Injection site pain/injection site discomfort	13 (16)
Fatigue	10 (13)
Edema peripheral	8 (10)
Injection site phlebitis	5 (6)
Gastrointestinal disorders	44 (55)
Nausea	34 (43)
Vomiting	15 (19)
Diarrhea	9 (11)
Abdominal pain	5 (6)
Constipation	5 (6)
Infections and infestations	24 (30)
Postoperative infection	13 (16)

Nervous system disorders	19 (24)
Dizziness	9 (11)
Headache	5 (6)
Skin and subcutaneous disorders	14 (18)
Alopecia	11 (14)
Respiratory, thoracic and mediastinal disorders	13 (16)
Dyspnea	6 (8)
Pneumonia	5 (6)
Cough	4(5)
Vascular disorders	12 (15)
Blood and lymphatic system disorders	11 (14)
Anemia	5 (6)
Psychiatric disorders	11 (14)
Depression	6 (8)
Insomnia	4 (5)
Musculoskeletal and connective tissue disorders	10 (13)
Metabolism and nutrition disorders	8 (10)
Anorexia	4 (5)
Cardiac disorders	4 (5)

Neutropenia and febrile neutropenia each occurred in 2.5% of patients.

Table 2 summarizes laboratory adverse events from studies 1 and 2.

Table 2: Laboratory Adverse Reactions

CTCAE version 3 Term	CTC grade 3	CTC grade 4	CTC grade 2 to 4
	N (%)	N (%)	N (%)
Hematologic:			
Decreased hemoglobin	2 (3)	0	34 (43)
Decreased WBC	20 (25)	16 (20)	58 (73)
Decreased neutrophils	17 (22)	19 (24)	48 (61)
Decreased platelets	17 (21)	0	21 (26)
Hepatic:			
Increased bilirubin	1 (2)	0	6 (11)
Increased AST	1 (1)	1 (1)	21 (28)
Increased ALT	1 (1)	4 (5)	17 (22)
Increased alkaline phosphatase	0	0	3 (4)
Increased LDH	0	0	1 (5)
Metabolic:			
Increased creatinine	1 (2)	1 (2)	8 (14)
Decreased sodium	4 (5)	1 (1)	5 (6)
Increased calcium total	1 (2)	1 (2)	4 (7)

## 7 DRUG INTERACTIONS

No drug interactions have been identified [*see Clinical Pharmacology (12.3)*].

- Dimethylsulfoxide: Based on anecdotal reports concurrent use of topical dimethyl sulfoxide (DMSO) at the site of tissue injury may reduce the benefit of Totect<sup>®</sup>. Additionally, nonclinical studies using a mouse model that simulates extravasation of anthracyclines has shown that concomitant treatment with topical DMSO decreases the efficacy of systemic dexrazoxane.

## 8 USE IN SPECIFIC POPULATIONS

### 8.1 Pregnancy

Pregnancy Category D [*see Warnings and Precautions (5.2)*].

Dexrazoxane was toxic to pregnant rats at doses of 2 mg/kg (1/80 the human dose on an mg/m<sup>2</sup> basis) and embryotoxic and teratogenic at 8 mg/kg (about 1/20

the human dose on an mg/m<sup>2</sup> basis) when given daily during the period of organogenesis. Teratogenic effects in the rat included imperforate anus, microphthalmia, and anophthalmia. In offspring allowed to develop to maturity, fertility was impaired in the male and female rats treated *in utero* during organogenesis at 8 mg/kg. In rabbits, doses of 5 mg/kg (about 1/16 the human dose on an mg/m<sup>2</sup> basis) daily during the period of organogenesis caused maternal toxicity and doses of 20 mg/kg (1/4 the human dose on an mg/m<sup>2</sup> basis) were embryotoxic and teratogenic. Teratogenic effects in the rabbit included several skeletal malformations such as short tail, rib and thoracic malformations, and soft tissue variations including subcutaneous, eye and cardiac hemorrhagic areas, as well as agenesis of the gallbladder and of the intermediate lobe of the lung.

### **8.3 Nursing Mothers**

It is not known whether dexrazoxane or its metabolites are excreted in human milk. Because many drugs are excreted in human milk and because of the potential for serious adverse reactions in nursing infants from dexrazoxane, a decision should be made whether to discontinue nursing or to discontinue the drug, taking into account the importance of the drug to the mother.

### **8.4 Pediatric Use**

The safety and effectiveness of Totect<sup>®</sup> in pediatric patients have not been established.

### **8.5 Geriatric Use**

In total, 21% of the patients treated with Totect<sup>®</sup> were age 65 years or older and 9% were 75 and older. No differences in safety or efficacy were observed between older and younger patients, and other reported clinical experience has not identified differences in responses between the elderly and younger patients, but greater sensitivity of some older individuals cannot be ruled out.

This drug is known to be substantially excreted by the kidney, and the risk of toxic reactions to this drug may be greater in patients with impaired renal function. Because elderly patients are more likely to have decreased renal function, care should be taken in dose selection, and it may be useful to monitor renal function [*see Dosage and Administration (2.2)*].

### **8.6 Renal Impairment**

Greater exposure to dexrazoxane may occur in patients with compromised renal function. The Totect<sup>®</sup> dose should be reduced by 50% in patients with creatinine clearance values < 40 mL/min. [*see Dosage and Administration (2.2)*]

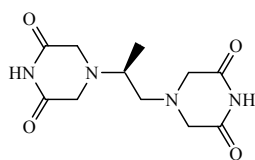
## **10 OVERDOSAGE**

There are no data on overdosage. There is no known antidote for dexrazoxane.

## 11 DESCRIPTION

Totect<sup>®</sup> (dexrazoxane for injection) is a sterile, pyrogen-free lyophilizate intended for intravenous (IV) administration. Totect<sup>®</sup> is packaged as an urgent treatment kit for single patient use. Each kit contains 1 or 4 vials of Totect<sup>®</sup> (dexrazoxane for injection) 500 mg and 1 or 4 vials of 50 mL diluent. Up to 10 vials each may be needed to complete three days of treatment.

Chemically, dexrazoxane is 2,6-piperazinedione,4,4'-(1-methyl-1,2-ethanediyl)bis-,(S)- or (S)-(+)-1,2-bis(3,5-dioxopiperazin-1-yl)propane. The following diagram shows the chemical structure:



The molecular formula is C<sub>11</sub>H<sub>16</sub>N<sub>4</sub>O<sub>4</sub>; the molecular weight is 268.3. Dexrazoxane is a white to off-white powder, with a melting point of 194 ± 3 °C. It is soluble in dioxane and 0.1 N HCl, sparingly soluble in water, tetrahydrofuran, citrate buffer at pH 4.0, phosphate buffer at pH 7.0, and borate-potassium chloride sodium hydroxide buffer at pH 9.0. The acid dissociation constants, pK<sub>a</sub>, are 2.5 (for the tertiary piperazine nitrogen) and 9.7 (for the nitrogen imide). Log P is -2.135.

The finished product is supplied in a sterile form for intravenous infusion only following mixing and diluting.

Each kit contains 2 or 8 50 mL Type I glass vials. One or 4 vials each contains dexrazoxane hydrochloride equivalent to 500 mg dexrazoxane and 1 or 4 vials each contains diluent (0.167M Sodium Lactate Injection, USP). Each vial of dexrazoxane for injection is closed with an aluminum flip-off cap covered with a dark red overcap. Each vial of diluent is closed with an aluminum flip-off cap covered with a white overcap.

When reconstituted as directed, the admixture contains dexrazoxane and the following excipients: hydrochloric acid, sodium lactate, water for injection, sodium hydroxide and lactic acid [see *Dosage and Administration (2.4)*]. The admixture should be further diluted in 0.9 % NaCl prior to administration to patients.

## 12 CLINICAL PHARMACOLOGY

### 12.1 Mechanism of Action

The mechanism by which Totect<sup>®</sup> diminishes tissue damage resulting from the

extravasation of anthracycline drugs is unknown. Some evidence suggests that dexrazoxane inhibits topoisomerase II reversibly.

### 12.3 Pharmacokinetics

The pharmacokinetics of dexrazoxane have been studied in advanced cancer patients with normal renal and hepatic function. Generally, the pharmacokinetics of dexrazoxane can be adequately described by a two-compartment open model with first-order elimination. Dexrazoxane has been administered as a 15 minute infusion over a dose-range of 60 to 900 mg/m<sup>2</sup> with 60 mg/m<sup>2</sup> of doxorubicin, and at a fixed dose of 500 mg/m<sup>2</sup> with 50 mg/m<sup>2</sup> doxorubicin. The disposition kinetics of dexrazoxane are dose-independent, as shown by linear relationship between the area under plasma concentration-time curves and administered doses ranging from 60 to 900 mg/m<sup>2</sup>. The mean peak plasma concentration of dexrazoxane was 36.5 µg/mL at the end of the 15 minute infusion of a 500 mg/m<sup>2</sup> dose of dexrazoxane administered 15 to 30 minutes prior to the 50 mg/m<sup>2</sup> doxorubicin dose. The important pharmacokinetic parameters of dexrazoxane are summarized in the following table.

SUMMARY OF MEAN (%CV<sup>a</sup>) DEXRAZOXANE  
PHARMACOKINETIC PARAMETERS AT A DOSAGE RATIO OF  
10:1 OF DEXRAZOXANE: DOXORUBICIN

Dose Doxorubicin (mg/m <sup>2</sup> )	Dose Dexrazoxane (mg/m <sup>2</sup> )	Number of Subjects	Elimination Half-Life (h)	Plasma Clearance (L/h/m <sup>2</sup> )	Renal Clearance (L/h/m <sup>2</sup> )	<sup>b</sup> Volume of Distribution (L/m <sup>2</sup> )
50	500	10	2.5 (16)	7.88 (18)	3.35 (36)	22.4 (22)
60	600	5	2.1 (29)	6.25 (31)	—22.0 (55)	

<sup>a</sup> Coefficient of variation

<sup>b</sup> Steady-state volume of distribution

Following a rapid distributive phase (~0.2 to 0.3 hours), dexrazoxane reaches post-distributive equilibrium within 2 to 4 hours. The estimated steady-state volume of distribution of dexrazoxane suggests its distribution primarily in the total body water (25 L/m<sup>2</sup>).

In a study of the pharmacokinetics of dexrazoxane following the recommended dosing for patients with anthracycline extravasation, the mean systemic clearance and steady-state volume of distribution of dexrazoxane in six female patients undergoing treatment for anthracycline extravasations at a dose of 1000 mg/m<sup>2</sup> Totect<sup>®</sup> on Days 1 and 2 and 500 mg/m<sup>2</sup> on Day 3 were similar to that observed when administered with doxorubicin. The systemic clearances (mean ± SD) were similar among Day 1 (5.9 ± 2.0 L/h/m<sup>2</sup>), Day 2 (6.4 ± 2.1 L/h/m<sup>2</sup>), and Day 3 (7.9 ± 3.0 L/h/m<sup>2</sup>). The terminal elimination half life did not change over 3 days (2.1-2.2 h). The volume of distribution was 17.9 ~ 22.6 L/m<sup>2</sup>.

Qualitative metabolism studies with dexrazoxane have confirmed the presence of unchanged drug, a diacid-diamide cleavage product, and two monoacid-monoamide ring products in the urine of animals and man. The metabolite levels

were not measured in the pharmacokinetic studies.

Urinary excretion plays an important role in the elimination of dexrazoxane. Forty-two percent of the 500 mg/m<sup>2</sup> dose of dexrazoxane was excreted in the urine.

Protein Binding: *In vitro* studies have shown that dexrazoxane is not bound to plasma proteins.

#### *Effects of Gender*

There are no clinically relevant differences in the pharmacokinetics of dexrazoxane between males and females.

#### *Renal insufficiency*

The pharmacokinetics of dexrazoxane were assessed following a single 15 minute IV infusion of 150 mg/m<sup>2</sup> of dexrazoxane in male and female subjects with varying degrees of renal dysfunction as determined by creatinine clearance (CL<sub>CR</sub>) based on a 24-hour urinary creatinine collection. Dexrazoxane clearance was reduced in subjects with renal dysfunction. Compared with controls, the mean AUC<sub>0-inf</sub> value was twofold greater in subjects with moderate (CL<sub>CR</sub> 30-50 mL/min) to severe (CL<sub>CR</sub> < 30 mL/min) renal dysfunction. Modeling demonstrated that equivalent exposure (AUC<sub>0-inf</sub>) could be achieved if dosing were reduced by 50% in subjects with creatinine clearance values < 40 mL/min compared with control subjects (CL<sub>CR</sub> > 80 mL/min) [see *Dosage and Administration* (2.2)].

#### *Hepatic insufficiency*

The pharmacokinetics of dexrazoxane have not been evaluated in patients with hepatic impairment.

#### *Drug interactions*

There were no significant changes in the pharmacokinetics of doxorubicin (50 mg/m<sup>2</sup>) and its predominant metabolite, doxorubicinol, in the presence of dexrazoxane (500 mg/m<sup>2</sup>) in a crossover study in cancer patients.

## 13 NONCLINICAL TOXICOLOGY

### **13.1 Carcinogenesis, Mutagenesis, Impairment of Fertility**

The carcinogenic potential of dexrazoxane has not been investigated. Nevertheless, a study by the National Cancer Institute has reported that long term dosing with razoxane (the racemic mixture of dexrazoxane, ICRF-187, and its enantiomer ICRF-186) is associated with the development of malignancies in rats and possibly in mice. Dexrazoxane was not mutagenic to bacteria *in vitro* (Ames assay), but caused significant chromosomal aberrations in mammalian

cells *in vitro*. It also increased the formation of micronucleated polychromatic erythrocytes in mice. Thus, dexrazoxane is mutagenic and clastogenic.

The possible adverse effects of Totect<sup>®</sup> on the fertility of humans and experimental animals, male or female, have not been adequately studied. Testicular atrophy was seen with dexrazoxane administration at doses as low as 30 mg/kg weekly for 6 weeks in rats (about 1/5 the human dose on a mg/m<sup>2</sup> basis) and as low as 20 mg/kg weekly for 13 weeks in dogs (about half the human dose on a mg/m<sup>2</sup> basis).

## 14 CLINICAL STUDIES

Totect<sup>®</sup> was studied in two open-label, single arm, multi-center studies testing whether Totect<sup>®</sup> administration could reduce tissue injury following anthracycline extravasation and thereby reduce or avoid surgical intervention.

In the studies, eligible patients were receiving single-agent anthracycline intravenously (usually as part of combination chemotherapy) and developed extravasation symptoms of pain, burning, swelling, and/or redness near the infusion site. Skin biopsy samples from the suspected skin area were examined for the presence of anthracycline as determined by the presence of tissue fluorescence; however, therapy was not delayed for this test result.

In both studies, treatment with Totect<sup>®</sup> was to begin as soon as possible and no later than 6 hours after extravasation with retreatment 24 and 48 hours later (a total of 3 doses). Totect<sup>®</sup> was administered as 1-2 hour IV infusions through a different venous access location. The first and second doses were 1000 mg/m<sup>2</sup> and the third dose was 500 mg/m<sup>2</sup>. No dose modifications were planned except for patients whose body surface area exceeded 2.0 m<sup>2</sup>, in which case the total daily dose limit on the first and second day was 2000 mg/day and 1000 mg on the third day.

In total, 80 patients were enrolled and 57 were evaluable. Demographics in the two studies were similar. The median age was 57 years, and sixty-five percent of patients were women. The anthracyclines most commonly associated with extravasation were epirubicin (56%) and doxorubicin (41%). Peripheral IV sites of extravasation included the forearm in 63%, the hand in 21%, and the antecubital area in 11%; four patients (5%) received the anthracycline via a central venous access device (CVAD). Most patients presented with swelling (83%), redness (78%), and pain (43%). The median baseline lesion area was 25 cm<sup>2</sup> (range 1-253 cm<sup>2</sup>).

Evaluable patients had to be receiving IV anthracycline (single agent or in combination) at the time of extravasation, to have skin biopsies showing fluorescence, and to receive the first Totect<sup>®</sup> dose within 6 hours of the extravasation.

In study 1, none of the 19 evaluable patients required surgical intervention and none had serious late sequelae. In study 2, one of the 38 evaluable patients

required surgery. One additional non-evaluable patient required surgery for tissue necrosis. Thirteen patients had late sequelae at the event site such as site pain, fibrosis, atrophy, and local sensory disturbance; all were judged as mild except in the one patient who required surgery. None of the 4 patients with CVADs required surgical intervention.

## 15 REFERENCES

1. NIOSH Alert: Preventing occupational exposures to antineoplastic and other hazardous drugs in healthcare settings. 2004. U.S. Department of Health and Human Services, Public Health Service, Centers for Disease Control and Prevention, National Institute for Occupational Safety and Health, DHHS (NIOSH) Publication No. 2004-165.
2. OSHA Technical Manual, TED 1-0.15A, Section VI: Chapter 2. Controlling Occupational Exposure to Hazardous Drugs. OSHA, 1999. [http://www.osha.gov/dts/osta/otm/otm\\_vi/otm\\_vi\\_2.html](http://www.osha.gov/dts/osta/otm/otm_vi/otm_vi_2.html)
3. American Society of Health-System Pharmacists. ASHP guidelines on handling hazardous drugs. *Am J Health-Syst Pharm.* 2006;63:1172-1193.
4. Polovich, M., White, J.M., & Kelleher, L.O. (eds.) 2005. Chemotherapy and biotherapy guidelines and recommendations for practice (2nd. ed.) Pittsburgh, PA: Oncology Nursing Society

## 16 HOW SUPPLIED/STORAGE AND HANDLING

Totect<sup>®</sup> is available as an urgent treatment kit for single patient use. Each kit contains 1 or 4 vials of Totect<sup>®</sup> (dexrazoxane for injection) 500 mg and 1 or 4 vials of 50 mL diluent. Up to 10 vials of each may be needed to complete 3 days of treatment.

NDC 38423-110-02: Carton of 1 vial of Totect<sup>®</sup> and 1 vial of diluent for Totect<sup>®</sup>

NDC 38423-110-04: Carton of 4 vials of Totect<sup>®</sup> and 4 vials of diluent for Totect<sup>®</sup>

Store at 25°C (77°F); excursions permitted between 15-30°C (59-86°F) [see USP Controlled Room Temperature]. Protect from light. Keep vials in carton until ready for use.

Procedures for proper handling and disposal of anticancer drugs should be considered. Several guidelines on this subject have been published.<sup>1-4</sup> Direct contact of Totect<sup>®</sup> with the skin or mucous membranes prior to and following reconstitution should be avoided. If contact occurs, wash immediately and thoroughly with water.

**Rx Only**

## 17 PATIENT COUNSELING INFORMATION

See FDA-approved Patient Labeling (17.3)

### 17.1 Myelosuppression

Treatment with Totect<sup>®</sup> is associated with leukopenia, neutropenia, and thrombocytopenia. Perform hematological monitoring. [see Warnings and Precautions (5.1)]

### 17.2 Pregnancy

Women who have potential to become pregnant should be advised that Totect<sup>®</sup> might cause fetal harm. [see Warnings and Precautions (5.3)]

## FDA-Approved Patient Labeling

### PATIENT INFORMATION

**TOTECT<sup>®</sup>**

(dex-ra-ZOX-ane)

(dexrazoxane)

Injection

Read the Patient Information that comes with Totect<sup>®</sup> before you receive treatment. There may be new information. This information does not take the place of talking to your healthcare provider about your medical condition or treatment.

#### **What is Totect<sup>®</sup>?**

Totect<sup>®</sup> is a prescription medicine used to treat people when anthracycline chemotherapy leaks from your vein into the tissue around the intravenous (IV) site.

Totect<sup>®</sup> has not been studied in children.

#### **What should I tell my healthcare provider before receiving Totect<sup>®</sup>?**

Before receiving Totect<sup>®</sup>:

- tell your healthcare provider about all your medical conditions including if you have any kidney problems.
- tell your healthcare provider about all the medicines you take, including prescription and nonprescription medicines, vitamins, herbal or dietary

supplements. Know the medicines you take. Keep a list of them and show it to your healthcare provider and pharmacist when you get a new medicine.

- tell your healthcare provider if you use a topical dimethylsulfoxide (DMSO). Topical DMSO should not be used in combination with Totect<sup>®</sup> since it may lessen the effect of Totect<sup>®</sup>.
- tell your healthcare provider if you are pregnant, could be pregnant, or are planning to become pregnant, or are breast-feeding.

It is not known if Totect<sup>®</sup> passes into your breast milk. You and your doctor should decide if you will receive Totect<sup>®</sup> or breast feed. You should not do both. Talk to your doctor about the best way to feed your baby if you take Totect<sup>®</sup>. Do not breast feed while taking Totect<sup>®</sup>.

### **How will I receive Totect<sup>®</sup>?**

- Totect<sup>®</sup> is given to you in your healthcare provider's office, clinic or hospital.
- Totect<sup>®</sup> is infused into a vein for 1 to 2 hours each day for three days.

### **What are the possible side effects of Totect<sup>®</sup>?**

Totect<sup>®</sup> can cause serious side effects including:

- a decrease in white blood cell counts (leukopenia and neutropenia)
- a decrease in the blood cells which help your blood to clot (thrombocytopenia)

Blood tests may be needed to monitor for these side effects.

Common side effects:

- nausea
- fever
- pain at the intravenous site
- vomiting

Tell your healthcare provider if you have any side effect that bothers you or does not go away.

These are not all the possible side effects of Totect<sup>®</sup>. For more information, ask your healthcare provider or pharmacist.

Talk to your doctor for medical advice about side effects. You may report side effects to the FDA at 1-800-FDA-1088 (1-800-332-1088) or at [www.fda.gov/medwatch](http://www.fda.gov/medwatch).

### **General Information about Totect®**

Medicines are sometimes prescribed for purposes other than those listed in a patient information leaflet.

This Patient Information summarizes the most important information about Totect®. If you would like more information, talk with your healthcare provider. You can ask your healthcare provider or pharmacist for information about Totect® that is written for health professionals.

For more information, go to [www.totect.com](http://www.totect.com) or call 1-866-914-2922.

### **What are the ingredients in Totect®?**

Active ingredient: dexrazoxane

Inactive ingredients: hydrochloric acid, sodium lactate, water for injection, sodium hydroxide and lactic acid

See [www.totect.com](http://www.totect.com) webpage for the distributors

#### **Manufactured for:**

Apricus Pharmaceuticals USA, Inc.  
San Diego, California 92130

USA



Totect® is a registered trademark of Apricus Pharmaceuticals USA, Inc.

US Patent No 6,727,253 B2

Apr 2013

TOT-PIL/v06