

 **SALONPAS** PAIN RELIEF PATCH
Menthol 3%, Methyl Salicylate 10% PAIN RELIEVING PATCH

15 PATCHES

SALONPAS PAIN RELIEF PATCH

Menthol 3%, Methyl Salicylate 10% PAIN RELIEVING PATCH

Effectiveness confirmed in clinical trial
NDC#46581-670-15



**ULTRA THIN
COMFORT
STRETCH**

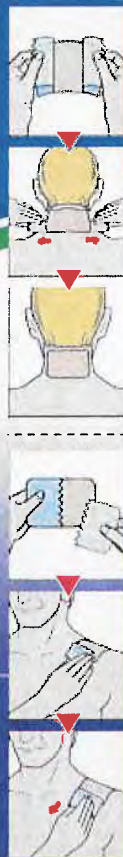
- STIFF NECK
- SORE SHOULDER
- BACKACHE
- JOINT PAIN

**FDA Approved Non Prescription
Pain Relieving Patch**

⚠ DO NOT USE MORE THAN ONE SALONPAS PATCH AT A TIME. SEE DIRECTIONS

Manufactured by
Hisamitsu Pharmaceutical Co., Inc. JAPAN SAGA TOSU
Questions or comments? Toll free 1-87-SALONPAS MON-FRI 9AM to 5PM (PST)
www.salonpas.us **15** $2\frac{3}{4} \times 3\frac{15}{16}$ inch (7cm x 10cm) PATCHES
Made in Japan

 **SALONPAS** PAIN RELIEF PATCH
Menthol 3%, Methyl Salicylate 10% PAIN RELIEVING PATCH



LOT

EXP.

15 PATCHES

4M219T-0

(b) (4)

SALONPAS.
PAIN RELIEF PATCH
PAIN RELIEVING PATCH

Press
Open

minty scent
*Package not child resistant.
 Keep out of reach of children.*

Drug Facts (Continued)

Active ingredients (in each patch)	Purpose
Menthol 3%.....	Topical analgesic
Methyl salicylate 10%(NSAID)*.....	Topical analgesic
<small>*nonsteroidal anti-inflammatory drug</small>	

Uses
 Temporarily relieves mild to moderate aches & pains of muscles & joints associated with:
 ■ strains ■ sprains ■ simple backache ■ arthritis ■ bruises

Warnings
For external use only
Stomach bleeding warning: This product contains an NSAID, which may cause stomach bleeding. The chance is small but higher if you:
 ■ are age 60 or older ■ have had stomach ulcers or bleeding problems ■ take a blood thinning (anticoagulant) or steroid drug ■ take other drugs containing an NSAID [aspirin, ibuprofen, naproxen, or others] ■ have 3 or more alcoholic drinks every day while using this product ■ take more or for a longer time than directed

Do not use
 ■ on the face or rashes ■ on wounds or damaged skin ■ if allergic to aspirin or other NSAIDs ■ with a heating pad ■ when sweating (such as from exercise or heat) ■ any patch from a pouch that has been open for 14 or more days ■ right before or after heart surgery

Ask a doctor before use if
 ■ you are allergic to topical products ■ the stomach bleeding warning applies to you ■ you have high blood pressure, heart disease, or kidney disease ■ you are taking a diuretic

When using this product
 ■ wash hands after applying or removing patch. Avoid contact with eyes. If eye contact occurs, rinse thoroughly with water. ■ the risk of heart attack or stroke may increase if you use more than directed or for longer than directed

Stop use and ask a doctor if
 ■ you feel faint, vomit blood, or have bloody or black stools. These are signs of stomach bleeding. ■ rash, itching or skin irritation develops ■ condition worsens ■ symptoms last for more than 3 days ■ symptoms clear up and occur again within a few days ■ stomach pain or upset gets worse or lasts

If pregnant or breast-feeding, ask a doctor before use while breast-feeding and during the first 6 months of pregnancy. Do not use during the last 3 months of pregnancy because it may cause problems in the unborn child or complications during delivery.

Keep out of reach of children. If put in mouth, get medical help or contact a Poison Control Center right away. Package not child resistant.

Directions
Adults 18 years and older:
 ■ clean and dry affected area ■ remove patch from backing film and apply to skin (see illustration) ■ apply one patch to the affected area and leave in place for up to 8 to 12 hours ■ if pain lasts after using the first patch, a second patch may be applied for up to another 8 to 12 hours ■ only use one patch at a time ■ do not use more than 2 patches per day ■ do not use for more than 3 days in a row

Children under 18 years of age:
 ■ do not use

Other Information
 ■ some individuals may not experience pain relief until several hours after applying the patch ■ avoid storing product in direct sunlight ■ protect product from excessive moisture ■ store at 20-25°C (68-77°F)

Inactive ingredients
 alicyclic saturated hydrocarbon resin, backing cloth, film, mineral oil, polyisobutylene, polyisobutylene 1,200,000, styrene-isoprene-styrene block copolymer, synthetic aluminum silicate

Drug Facts (Continued)

Inactive Ingredients



SALONPAS PAIN RELIEF PATCH **5** PATCHES
Menthol 3%, Methyl Salicylate 10% PAIN RELIEVING PATCH

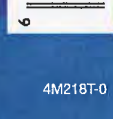
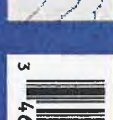
SALONPAS[®]

PAIN RELIEF PATCH

Menthol 3%, Methyl Salicylate 10% PAIN RELIEVING PATCH

Effectiveness confirmed in clinical trial

NDC#46581-670-05



**ULTRA THIN
COMFORT
STRETCH**

- STIFF NECK
- SORE SHOULDER
- BACKACHE
- JOINT PAIN

**FDA Approved Non Prescription
Pain Relieving Patch**

DO NOT USE MORE THAN ONE SALONPAS PATCH AT A TIME. SEE DIRECTIONS

Manufactured by
Hisamitsu Pharmaceutical Co., Inc. JAPAN SAGA TOSU
Questions or comments? Toll free 1-87-SALONPAS MON-FRI 9AM to 5PM (PST)
www.salonpas.us

Hisamitsu[®]

Made in Japan

5 2 3/4" x 3 1/16" inch
(7cm x 10cm)
PATCHES

4M218T-0

LOT

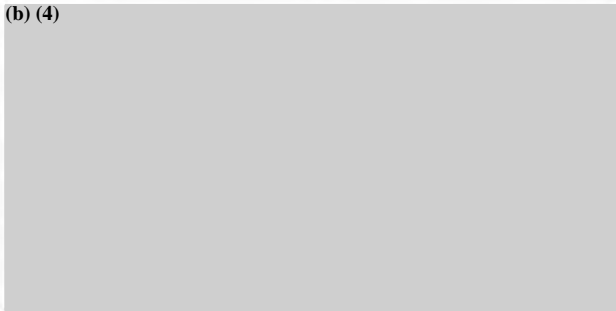
EXP.



SALONPAS PAIN RELIEF PATCH
Menthol 3%, Methyl Salicylate 10% PAIN RELIEVING PATCH

5 PATCHES

(b) (4)



✂ CUT OPEN HERE ----- CUT OPEN HERE ✂

FOLD TWICE AFTER OPENING

Discard unused patches 14 days after opening

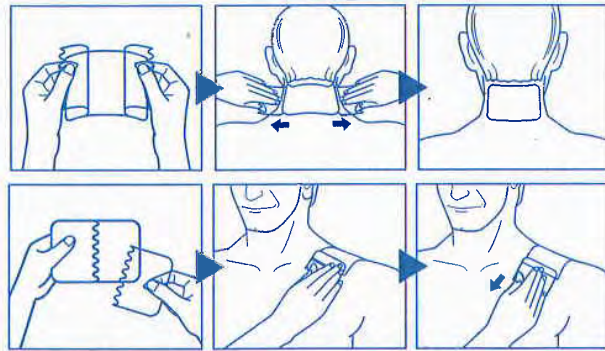
FOLD TWICE AFTER OPENING

SALONPAS[®]

PAIN RELIEF PATCH[※]

Menthol 3%, Methyl Salicylate 10% PAIN RELIEVING PATCH

Effectiveness confirmed in clinical trial



Questions or comments?
Toll free 1-87-SALONPAS MON-FRI 9AM to 5PM (PST)

www.salonpas.us

※DO NOT USE MORE THAN ONE SALONPAS PATCH AT A TIME. SEE DIRECTIONS

Hisamitsu[®]

Manufactured by
Hisamitsu Pharmaceutical Co., Inc.
JAPAN SAGA TOSU Made in Japan

5 2 3/4" X 3 1/4" inch
(7cm X 10cm)
PATCHES

✂ CUT OPEN HERE ----- CUT OPEN HERE ✂

FOLD TWICE AFTER OPENING

Discard unused patches 14 days after opening

FOLD TWICE AFTER OPENING

SALONPAS[®] PAIN RELIEF PATCH PAIN RELIEVING PATCH minty scent

Drug Facts

Active ingredients (in each patch)

Active ingredients (in each patch)	Purpose
Menthol 3%	Topical analgesic
Methyl salicylate 10%(NSAID)	Topical analgesic
*nonsteroidal anti-inflammatory drug	

Uses

Temporarily relieves mild to moderate aches & pains of muscles & joints associated with:

- strains ■ sprains ■ simple backache ■ arthritis ■ bruises

Warnings

For external use only

Stomach bleeding warning: This product contains an NSAID, which may cause stomach bleeding. The chance is small but higher if you:

- are age 60 or older ■ have had stomach ulcers or bleeding problems ■ take a blood thinning (anticoagulant) or steroid drug ■ take other drugs containing an NSAID [aspirin, ibuprofen, naproxen, or others] ■ have 3 or more alcoholic drinks every day while using this product ■ take more or for a longer time than directed

Do not use

- on the face or rashes ■ on wounds or damaged skin ■ if allergic to aspirin or other NSAIDs ■ with a heating pad ■ when sweating (such as from exercise or heat) ■ any patch from a pouch that has been open for 14 or more days ■ right before or after heart surgery

Ask a doctor before use if

- you are allergic to topical products ■ the stomach bleeding warning applies to you ■ you have high blood pressure, heart disease, or kidney disease ■ you are taking a diuretic

When using this product

- wash hands after applying or removing patch. Avoid contact with eyes. If eye contact occurs, rinse thoroughly with water. ■ the risk of heart attack or stroke may increase if you use more than directed or for longer than directed

Stop use and ask a doctor if

- you feel faint, vomit blood, or have bloody or black stools. These are signs of stomach bleeding. ■ rash, itching or skin irritation develops ■ condition worsens ■ symptoms last for more than 3 days ■ symptoms clear up and occur again within a few days ■ stomach pain or upset gets worse or lasts

If pregnant or breast-feeding, ask a doctor before use while breast-feeding and during the first 6 months of pregnancy. Do not use during the last 3 months of pregnancy because it may cause problems in the unborn child or complications during delivery.

Keep out of reach of children. If put in mouth, get medical help or contact a Poison Control Center right away. Package not child resistant.

Directions

Adults 18 years and older:

- clean and dry affected area ■ remove patch from backing film and apply to skin (see illustration) ■ apply one patch to the affected area and leave in place for up to 8 to 12 hours ■ if pain lasts after using the first patch, a second patch may be applied for up to another 8 to 12 hours ■ only use one patch at a time ■ do not use more than 2 patches per day ■ do not use for more than 3 days in a row

Children under 18 years of age:

- do not use

Other information

- some individuals may not experience pain relief until several hours after applying the patch ■ avoid storing product in direct sunlight ■ protect product from excessive moisture ■ store at 20-25°C (68-77°F)

Inactive ingredients

alicyclic saturated hydrocarbon resin, backing cloth, film, mineral oil, polyisobutylene, polyisobutylene 1,200,000, styrene-isoprene-styrene block copolymer, synthetic aluminum silicate

Package not child resistant. Keep out of reach of children.

LOT
EXP.
4L296T-0

(b) (4)



> CUT OPEN HERE ----- CUT OPEN HERE <

FOLD TWICE AFTER OPENING

Discard unused patches 14 days after opening

FOLD TWICE AFTER OPENING

SALONPAS[®]

PAIN RELIEF PATCH[®]

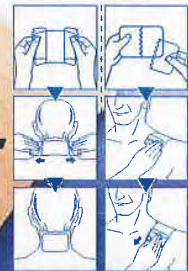
Menthol 3%, Methyl Salicylate 10% PAIN RELIEVING PATCH

Effectiveness confirmed in clinical trial

NDC#46581-670-03



ULTRA THIN
**COMFORT
STRETCH**



FREE
SAMPLE

FDA Approved Non Prescription
Pain Relieving Patch

- STIFF NECK
- SORE SHOULDER
- BACKACHE
- JOINT PAIN

Questions or comments?
Toll free 1-87-SALONPAS MON-FRI 9AM to 5PM (PST) www.salonpas.us

⚠ DO NOT USE MORE THAN ONE SALONPAS PATCH AT A TIME. SEE DIRECTIONS

Hisamitsu[®]

Manufactured by
Hisamitsu Pharmaceutical Co., Inc.
JAPAN SAGA TOSU Made in Japan

3 $2\frac{3}{4} \times 3\frac{1}{2}$ inch
(7cm x 10cm)
PATCHES

✂ CUT OPEN HERE ----- CUT OPEN HERE ✂
SALONPAS[®] PAIN RELIEF PATCH PAIN RELIEVING PATCH minty scent

Drug Facts

Active ingredients (in each patch)

Purpose

Menthol 3% Topical analgesic
Methyl salicylate 10%(NSAID)* Topical analgesic
*nonsteroidal anti-inflammatory drug

Uses

Temporarily relieves mild to moderate aches & pains of muscles & joints associated with:
■ strains ■ sprains ■ simple backache ■ arthritis ■ bruises

Warnings

For external use only

Stomach bleeding warning: This product contains an NSAID, which may cause stomach bleeding. The chance is small but higher if you:

■ are age 60 or older ■ have had stomach ulcers or bleeding problems ■ take a blood thinning (anticoagulant) or steroid drug ■ take other drugs containing an NSAID (aspirin, ibuprofen, naproxen, or others) ■ have 3 or more alcoholic drinks every day while using this product ■ take more or for a longer time than directed

Do not use ■ on the face or rashes ■ on wounds or damaged skin ■ if allergic to aspirin or other NSAIDs ■ with a heating pad ■ when sweating (such as from exercise or heat) ■ any patch from a pouch that has been open for 14 or more days ■ right before or after heart surgery

Ask a doctor before use if ■ you are allergic to topical products ■ the stomach bleeding warning applies to you ■ you have high blood pressure, heart disease, or kidney disease ■ you are taking a diuretic

When using this product ■ wash hands after applying or removing patch. Avoid contact with eyes. If eye contact occurs, rinse thoroughly with water. ■ the risk of heart attack or stroke may increase if you use more than directed or for longer than directed

Stop use and ask a doctor if ■ you feel faint, vomit blood, or have bloody or black stools. These are signs of stomach bleeding. ■ rash, itching or skin irritation develops ■ condition worsens ■ symptoms last for more than 3 days ■ symptoms clear up and occur again within a few days ■ stomach pain or upset gets worse or lasts

If pregnant or breast-feeding, ask a doctor before use while breast-feeding and during the first 6 months of pregnancy. Do not use during the last 3 months of pregnancy because it may cause problems in the unborn child or complications during delivery.

Keep out of reach of children. If put in mouth, get medical help or contact a Poison Control Center right away. Package not child resistant.

Directions

Adults 18 years and older:

■ clean and dry affected area ■ remove patch from backing film and apply to skin (see illustration) ■ apply one patch to the affected area and leave in place for up to 8 to 12 hours ■ if pain lasts after using the first patch, a second patch may be applied for up to another 8 to 12 hours ■ only use one patch at a time ■ do not use more than 2 patches per day ■ do not use for more than 3 days in a row

Children under 18 years of age: ■ do not use

Other information

■ some individuals may not experience pain relief until several hours after applying the patch ■ avoid storing product in direct sunlight ■ protect product from excessive moisture ■ store at 20-25°C (68-77°F)

Inactive ingredients

alicyclic saturated hydrocarbon resin, backing cloth, film, mineral oil, polyisobutylene, polyisobutylene 1,200,000, styrene-isoprene-styrene block copolymer, synthetic aluminum silicate

LOT

EXP.

Package not child resistant. Keep out of reach of children.

4L297T-0

 **SALONPAS** ^{ARTHRITIS}_{PAIN}
Menthol 3%, Methyl Salicylate 10% PAIN RELIEVING PATCH

15 PATCHES

SALONPAS ^{ARTHRITIS}_{PAIN}
Menthol 3%, Methyl Salicylate 10% PAIN RELIEVING PATCH

Menthol 3%, Methyl Salicylate 10% PAIN RELIEVING PATCH

Effectiveness confirmed in clinical trial

NDC#46581-680-15

ULTRA THIN
COMFORT
STRETCH

FDA Approved Non Prescription
Pain Relieving Patch

***DO NOT USE MORE THAN ONE SALONPAS PATCH AT A TIME. SEE DIRECTIONS**

Manufactured by
Hisamitsu Pharmaceutical Co., Inc. JAPAN SAGA TOSU
Questions or comments? Toll free 1-87-SALONPAS (MON-FRI 9AM to 5PM (PST))
www.salonpas.us **15** ^{2 3/4 x 3 1/8}_(7cm x 10cm) PATCHES
Made in Japan

 **SALONPAS** ^{ARTHRITIS}_{PAIN}
Menthol 3%, Methyl Salicylate 10% PAIN RELIEVING PATCH

LOT

EXP.

15 PATCHES

3M232T-0



(b) (4)

SALONPAS[®]
ARTHRITIS PAIN
 PAIN RELIEVING PATCH

Press
Open

minty scent
 Package not child resistant.
 Keep out of reach of children.

Drug Facts

Active ingredients (in each patch)

	Purpose
Menthol 3%.....	Topical analgesic
Methyl salicylate 10%(NSAID)*.....	Topical analgesic
*nonsteroidal anti-inflammatory drug	

Uses

Temporarily relieves mild to moderate aches & pains of muscles & joints associated with:
 ■ arthritis ■ sprains ■ strains ■ bruises ■ simple backache

Warnings

For external use only

Stomach bleeding warning: This product contains an NSAID, which may cause stomach bleeding. The chance is small but higher if you:

- are age 60 or older ■ have had stomach ulcers or bleeding problems ■ take a blood thinning (anticoagulant) or steroid drug ■ take other drugs containing an NSAID (aspirin, ibuprofen, naproxen, or others) ■ have 3 or more alcoholic drinks every day while using this product ■ take more or for a longer time than directed

Do not use

- on the face or rashes ■ on wounds or damaged skin ■ if allergic to aspirin or other NSAIDs ■ with a heating pad ■ when sweating (such as from exercise or heat) ■ any patch from a pouch that has been open for 14 or more days ■ right before or after heart surgery

Ask a doctor before use if

- you are allergic to topical products ■ the stomach bleeding warning applies to you ■ you have high blood pressure, heart disease, or kidney disease ■ you are taking a diuretic

When using this product

- wash hands after applying or removing patch. Avoid contact with eyes. If eye contact occurs, rinse thoroughly with water. ■ the risk of heart attack or stroke may increase if you use more than directed or for longer than directed

Stop use and ask a doctor if

- you feel faint, vomit blood, or have bloody or black stools. These are signs of stomach bleeding. ■ rash, itching or skin irritation develops ■ condition worsens ■ symptoms last for more than 3 days ■ symptoms clear up and occur again within a few days ■ stomach pain or upset gets worse or lasts

If pregnant or breast-feeding, ask a doctor before use while breast-feeding and during the first 6 months of pregnancy. Do not use during the last 3 months of pregnancy because it may cause problems in the unborn child or complications during delivery.

Keep out of reach of children. If put in mouth, get medical help or contact a Poison Control Center right away. Package not child resistant.

Directions

Adults 18 years and older:

- clean and dry affected area ■ remove patch from backing film and apply to skin (see illustration) ■ apply one patch to the affected area and leave in place for up to 8 to 12 hours ■ if pain lasts after using the first patch, a second patch may be applied for up to another 8 to 12 hours ■ only use one patch at a time ■ do not use more than 2 patches per day ■ do not use for more than 3 days in a row

Children under 18 years of age:

- do not use

Drug Facts (Continued)

Other information
 ■ some individuals may not experience pain relief until several hours after applying the patch ■ avoid storing product in direct sunlight ■ protect product from excessive moisture ■ store at 20-25°C (68-77°F)

Inactive ingredients

alicyclic saturated hydrocarbon resin, backing cloth, film, mineral oil, polyisobutylene, polyisobutylene 1,200,000, styrene-isoprene-styrene block copolymer, synthetic aluminum silicate

Drug Facts (Continued)

Inactive Ingredients



SALONPAS ^{ARTHRITIS PAIN}
Menthol 3%, Methyl Salicylate 10% PAIN RELIEVING PATCH

5
PATCHES

SALONPAS

ARTHRITIS PAIN

Menthol 3%, Methyl Salicylate 10% PAIN RELIEVING PATCH

Effectiveness confirmed in clinical trial

NDC#46581-680-05

ULTRA THIN
COMFORT
STRETCH

**FDA Approved Non Prescription
Pain Relieving Patch**

※DO NOT USE MORE THAN ONE SALONPAS PATCH AT A TIME. SEE DIRECTIONS

Manufactured by
Hisamitsu Pharmaceutical Co., Inc. JAPAN SAGA TOSU
Questions or comments? Toll free 1-877-SALONPAS MON-FRI 9AM to 5PM (PST)
www.salonpas.us Made in Japan

Hisamitsu

5 $2\frac{3}{4} \times 3\frac{1}{8}$ inch
(7cm x 10cm)
PATCHES

3M231T-0

LOT

EXP.



SALONPAS ^{ARTHRITIS PAIN}
Menthol 3%, Methyl Salicylate 10% PAIN RELIEVING PATCH

5
PATCHES



(b) (4)



> CUT OPEN HERE ----- CUT OPEN HERE <

FOLD TWICE AFTER OPENING

Discard unused patches 14 days after opening

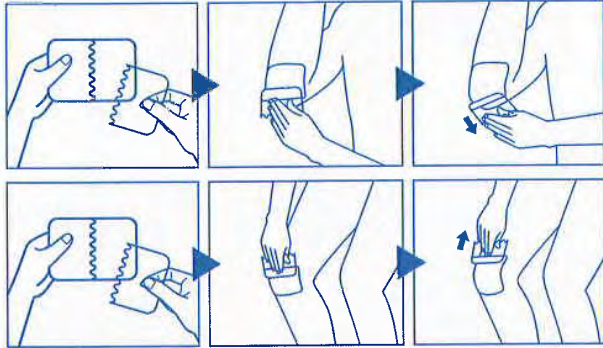
FOLD TWICE AFTER OPENING

SALONPAS[®]

ARTHRITIS PAIN[※]

Menthol 3%, Methyl Salicylate 10% PAIN RELIEVING PATCH

Effectiveness confirmed in clinical trial



Questions or comments?
Toll free 1-87-SALONPAS MON-FRI 9AM to 5PM (PST)

www.salonpas.us

※DO NOT USE MORE THAN ONE SALONPAS PATCH AT A TIME. SEE DIRECTIONS

Hisamitsu

Manufactured by
Hisamitsu Pharmaceutical Co., Inc.
JAPAN SAGA TOSU Made In Japan

5 2 3/4" X 3 1/4" inch
(7cm X 10cm)
PATCHES

> CUT OPEN HERE ----- CUT OPEN HERE <

FOLD TWICE AFTER OPENING

Discard unused patches 14 days after opening

FOLD TWICE AFTER OPENING

SALONPAS[®] ARTHRITIS PAIN PAIN RELIEVING PATCH minty scent

Drug Facts

Active ingredients (in each patch)	Purpose
Menthol 3%	Topical analgesic
Methyl salicylate 10%(NSAID) *nonsteroidal anti-inflammatory drug	Topical analgesic

Uses
 Temporarily relieves mild to moderate aches & pains of muscles & joints associated with:
 ■ arthritis ■ sprains ■ strains ■ bruises ■ simple backache

Warnings
For external use only
Stomach bleeding warning: This product contains an NSAID, which may cause stomach bleeding. The chance is small but higher if you:
 ■ are age 60 or older ■ have had stomach ulcers or bleeding problems ■ take a blood thinning (anticoagulant) or steroid drug ■ take other drugs containing an NSAID (aspirin, ibuprofen, naproxen, or others) ■ have 3 or more alcoholic drinks every day while using this product ■ take more or for a longer time than directed

Do not use
 ■ on the face or rashes ■ on wounds or damaged skin ■ if allergic to aspirin or other NSAIDs ■ with a heating pad ■ when sweating (such as from exercise or heat) ■ any patch from a pouch that has been open for 14 or more days ■ right before or after heart surgery

Ask a doctor before use if
 ■ you are allergic to topical products ■ the stomach bleeding warning applies to you ■ you have high blood pressure, heart disease, or kidney disease ■ you are taking a diuretic

When using this product
 ■ wash hands after applying or removing patch. Avoid contact with eyes. If eye contact occurs, rinse thoroughly with water. ■ the risk of heart attack or stroke may increase if you use more than directed or for longer than directed

Stop use and ask a doctor if
 ■ you feel faint, vomit blood, or have bloody or black stools. These are signs of stomach bleeding. ■ rash, itching or skin irritation develops ■ condition worsens ■ symptoms last for more than 3 days ■ symptoms clear up and occur again within a few days ■ stomach pain or upset gets worse or lasts

If pregnant or breast-feeding, ask a doctor before use while breast-feeding and during the first 6 months of pregnancy. Do not use during the last 3 months of pregnancy because it may cause problems in the unborn child or complications during delivery.

Keep out of reach of children. If put in mouth, get medical help or contact a Poison Control Center right away. Package not child resistant.

Directions
Adults 18 years and older:
 ■ Clean and dry affected area. ■ remove patch from backing film and apply to skin (see illustration) ■ apply one patch to the affected area and leave in place for up to 8 to 12 hours ■ if pain lasts after using the first patch, a second patch may be applied for up to another 8 to 12 hours ■ only use one patch at a time ■ do not use more than 2 patches per day ■ do not use for more than 3 days in a row

Children under 18 years of age:
 ■ do not use

Other information
 ■ some individuals may not experience pain relief until several hours after applying the patch ■ avoid storing product in direct sunlight ■ protect product from excessive moisture ■ store at 20-25°C (68-77°F)

Inactive ingredients
 alicyclic saturated hydrocarbon resin, backing cloth, film, mineral oil, polyisobutylene, polyisobutylene 1,200,000, styrene-isoprene-styrene block copolymer, synthetic aluminum silicate

Package not child resistant. Keep out of reach of children.

LOT

EXP.

2L710T-0

(b) (4)



✂ CUT OPEN HERE ----- CUT OPEN HERE ✂

FOLD TWICE AFTER OPENING

Discard unused patches 14 days after opening

FOLD TWICE AFTER OPENING

SALONPAS®

ARTHRITIS PAIN[※]

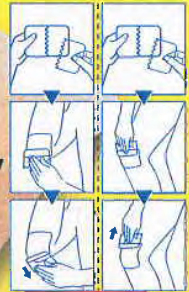
Menthol 3%, Methyl Salicylate 10% PAIN RELIEVING PATCH

Effectiveness confirmed in clinical trial

NDC#46581-680-03

FREE
SAMPLE

ULTRA THIN COMFORT STRETCH



FDA Approved Non Prescription
Pain Relieving Patch

Questions or comments?
Toll free 1-87-SALONPAS MON-FRI 9AM to 5PM (PST) www.salonpas.us
※ DO NOT USE MORE THAN ONE SALONPAS PATCH AT A TIME. SEE DIRECTIONS

Hisamitsu®

Manufactured by
Hisamitsu Pharmaceutical Co., Inc.
JAPAN SAGA TOSU Made in Japan

3 $2\frac{3}{4} \times 3\frac{1}{2}$ inch
(7cm x 9cm)
PATCHES

✂ CUT OPEN HERE ----- CUT OPEN HERE ✂
SALONPAS[®] ARTHRITIS PAIN PAIN RELIEVING PATCH minty scent

Drug Facts

Active ingredients (in each patch)	Purpose
Menthol 3%	Topical analgesic
Methyl salicylate 10%(NSAID)*	Topical analgesic
*nonsteroidal anti-inflammatory drug	

Uses
 Temporarily relieves mild to moderate aches & pains of muscles & joints associated with:
 ■ arthritis ■ sprains ■ strains ■ bruises ■ simple backache

Warnings
For external use only

Stomach bleeding warning: This product contains an NSAID, which may cause stomach bleeding. The chance is small but higher if you:
 ■ are age 60 or older ■ have had stomach ulcers or bleeding problems ■ take a blood thinning (anticoagulant) or steroid drug ■ take other drugs containing an NSAID [aspirin, ibuprofen, naproxen, or others] ■ have 3 or more alcoholic drinks every day while using this product ■ take more or for a longer time than directed

Do not use ■ on the face or rashes ■ on wounds or damaged skin ■ if allergic to aspirin or other NSAIDs ■ with a heating pad ■ when sweating (such as from exercise or heat) ■ any patch from a pouch that has been open for 14 or more days ■ right before or after heart surgery

Ask a doctor before use if ■ you are allergic to topical products ■ the stomach bleeding warning applies to you ■ you have high blood pressure, heart disease, or kidney disease ■ you are taking a diuretic

When using this product ■ wash hands after applying or removing patch. Avoid contact with eyes. If eye contact occurs, rinse thoroughly with water. ■ the risk of heart attack or stroke may increase if you use more than directed or for longer than directed

Stop use and ask a doctor if ■ you feel faint, vomit blood, or have bloody or black stools. These are signs of stomach bleeding. ■ rash, itching or skin irritation develops ■ condition worsens ■ symptoms last for more than 3 days ■ symptoms clear up and occur again within a few days ■ stomach pain or upset gets worse or lasts

If pregnant or breast-feeding, ask a doctor before use while breast-feeding and during the first 6 months of pregnancy. Do not use during the last 3 months of pregnancy because it may cause problems in the unborn child or complications during delivery.

Keep out of reach of children. If put in mouth, get medical help or contact a Poison Control Center right away. Package not child resistant.

Directions
Adults 18 years and older:
 ■ clean and dry affected area ■ remove patch from backing film and apply to skin (see illustration) ■ apply one patch to the affected area and leave in place for up to 8 to 12 hours ■ if pain lasts after using the first patch, a second patch may be applied for up to another 8 to 12 hours ■ only use one patch at a time ■ do not use more than 2 patches per day ■ do not use for more than 3 days in a row
Children under 18 years of age: ■ do not use

Other information
 ■ some individuals may not experience pain relief until several hours after applying the patch ■ avoid storing product in direct sunlight ■ protect product from excessive moisture ■ store at 20-25°C (68-77°F)

Inactive ingredients
 alicyclic saturated hydrocarbon resin, backing cloth, film, mineral oil, polyisobutylene, polyisobutylene 1,200,000, styrene-isoprene-styrene block copolymer, synthetic aluminum silicate

LOT

EXP.

Package not child resistant. Keep out of reach of children.

3L711T-0

**This is a representation of an electronic record that was signed electronically and
this page is the manifestation of the electronic signature.**

/s/

Joel Schiffenbauer
6/19/2009 11:34:23 AM