

21.FS67_sample_sachet_1s

01.SPRP original 1ct pouch free sample_210518

Labeling Format Information:		
Fonts : Helvetica Condensed Black Oblique Helvetica Condensed Bold Helvetica Narrow		
Drug Facts :	9.5pt	Leading : 6.15pt
Header :	8pt	Bullets : 6pt
Subheader :	6pt	Barlines : 2.5pt
Body Text :	6pt	Hairlines : 0.5pt
Drug Facts (Continued) NA		
Horizontal Scale: 80%-100% Average Kerning: 0		

✂ CUT OPEN HERE ----- CUT OPEN HERE ✂

minty scent

Drug Facts

Active ingredients (in each patch)	Purpose
Menthol 3%	Topical analgesic
Methyl salicylate 10% (NSAID: nonsteroidal anti-inflammatory drug)	Topical analgesic

Uses Temporarily relieves mild to moderate aches & pains of muscles & joints associated with:

- strains ■ sprains ■ simple backache ■ arthritis ■ bruises

Warnings
For external use only

Stomach bleeding warning: This product contains an NSAID, which may cause stomach bleeding. The chance is small but higher if you:

- are age 60 or older
- have had stomach ulcers or bleeding problems ■ take a blood thinning (anticoagulant) or steroid drug
- take other drugs containing an NSAID (aspirin, ibuprofen, naproxen, or others)
- have 3 or more alcoholic drinks every day while using this product
- take more or for a longer time than directed

Do not use

- on the face or rashes ■ on wounds or damaged skin ■ if allergic to aspirin or other NSAIDs
- with a heating pad ■ when sweating (such as from exercise or heat)
- any patch from a pouch that has been open for 14 or more days ■ right before or after heart surgery

Ask a doctor before use if

- you are allergic to topical products ■ the stomach bleeding warning applies to you
- you are taking a diuretic ■ you have high blood pressure, heart disease, or kidney disease

When using this product ■ wash hands after applying or removing patch. Avoid contact with eyes. If eye contact occurs, rinse thoroughly with water.

- the risk of heart attack or stroke may increase if you use more than directed or for longer than directed

Stop use and ask a doctor if

- stomach pain or upset gets worse or lasts
- you feel faint, vomit blood, or have bloody or black stools. These are signs of stomach bleeding.
- rash, itching or skin irritation develops ■ condition worsens ■ symptoms last for more than 3 days
- symptoms clear up and occur again within a few days

If pregnant or breast-feeding, ask a health professional before use. It is especially important not to use methyl salicylate at 20 weeks or later in pregnancy unless definitely directed to do so by a doctor because it may cause problems in the unborn child or complications during delivery.

Keep out of reach of children. If put in mouth, get medical help or contact a Poison Control Center right away. Package not child resistant. Dispose of the used patches after folding sticky ends together.

Directions

Adults 18 years and older:

- only use one patch at a time
- clean and dry affected area ■ remove patch from backing film and apply to skin (see illustration)
- apply one patch to the affected area and leave in place for up to 8 to 12 hours
- if pain lasts after using the first patch, a second patch may be applied for up to another 8 to 12 hours
- do not use more than 2 patches per day ■ do not use for more than 3 days in a row
- the used patch should be removed from the skin when a new one is applied

Children under 18 years of age: do not use; this product has not been shown to work in children

Other information

- Store at 20-25°C (68-77°F) ■ Avoid storing product in direct sunlight
- Protect product from excessive moisture
- Some individuals may not experience pain relief until several hours after applying the patch

Inactive ingredients
alicyclic saturated hydrocarbon resin, backing cloth, film, mineral oil, polyisobutylene, polyisobutylene 1,200,000, styrene-isoprene-styrene block copolymer, synthetic aluminum silicate

Questions or comments?
Toll free 1-87-SALONPAS www.salonpas.us

LOT: _____
EXP: _____

®Registered Trade Mark XXXXXX-X

15.FS67_sachet_1s

02.SPRP original 1ct pouch commercial_210518

Labeling Format Information:			
Fonts : Helvetica Condensed Black Oblique Helvetica Condensed Bold Helvetica Narrow			
Drug Facts :	9.5pt	Leading :	6.15pt
Header :	8pt	Bullets :	6pt
Subheader :	6pt	Barlines :	2.5pt
Body Text :	6pt	Hairlines :	0.5pt
Drug Facts (Continued) NA			
Horizontal Scale: 80%-100% Average Kerning: 0			

Hisamitsu®
NDC#46581-670-01

for temporary relief of mild to moderate pain

Sore Muscle
Sprains
Backache
Joint Pain

HOW TO APPLY

- 1 Peel the center film.
- 2 Place on affected area.
- 3 Slide the film backward.
- 4 Slide the other film forward.

Salonpas®
Pain Relief Patch

Menthol 3%
Methyl Salicylate 10%
Topical Analgesic

APPLY FOR 8-12 HOURS

FDA APPROVED NON-PRESCRIPTION PAIN RELIEVING PATCH
EFFECTIVENESS CONFIRMED IN CLINICAL TRIAL

1 PATCH
2 3/4" x 3 15/16" (7cm x 10cm)

Package not child resistant. Keep out of reach of children.

DO NOT USE MORE THAN ONE SALONPAS PATCH AT A TIME. SEE DIRECTIONS.

Manufactured by Hisamitsu Pharmaceutical Co., Inc. JAPAN SAGA TOSU MADE IN JAPAN
 Distributed by Hisamitsu America, Inc. Florham Park, NJ 07932

3 46581 67001 1

CUT OPEN HERE ----- CUT OPEN HERE

minty scent

Drug Facts

Active ingredients (in each patch)
 Menthol 3%..... Topical analgesic
 Methyl salicylate 10% (NSAID: nonsteroidal anti-inflammatory drug)..... Topical analgesic

Purpose

Uses Temporarily relieves mild to moderate aches & pains of muscles & joints associated with:
 ■ strains ■ sprains ■ simple backache ■ arthritis ■ bruises

Warnings
For external use only
Stomach bleeding warning: This product contains an NSAID, which may cause stomach bleeding. The chance is small but higher if you:
 ■ are age 60 or older
 ■ have had stomach ulcers or bleeding problems ■ take a blood thinning (anticoagulant) or steroid drug
 ■ take other drugs containing an NSAID (aspirin, ibuprofen, naproxen, or others)
 ■ have 3 or more alcoholic drinks every day while using this product
 ■ take more or for a longer time than directed

Do not use
 ■ on the face or rashes ■ on wounds or damaged skin ■ if allergic to aspirin or other NSAIDs
 ■ with a heating pad ■ when sweating (such as from exercise or heat)
 ■ any patch from a pouch that has been open for 14 or more days ■ right before or after heart surgery

Ask a doctor before use if ■ you are allergic to topical products ■ the stomach bleeding warning applies to you
 ■ you are taking a diuretic ■ you have high blood pressure, heart disease, or kidney disease

When using this product ■ wash hands after applying or removing patch. Avoid contact with eyes. If eye contact occurs, rinse thoroughly with water.
 ■ the risk of heart attack or stroke may increase if you use more than directed or for longer than directed

Stop use and ask a doctor if ■ stomach pain or upset gets worse or lasts
 ■ you feel faint, vomit blood, or have bloody or black stools. These are signs of stomach bleeding.
 ■ rash, itching or skin irritation develops ■ condition worsens ■ symptoms last for more than 3 days
 ■ symptoms clear up and occur again within a few days

If pregnant or breast-feeding, ask a health professional before use. It is especially important not to use methyl salicylate at 20 weeks or later in pregnancy unless definitely directed to do so by a doctor because it may cause problems in the unborn child or complications during delivery.
Keep out of reach of children. If put in mouth, get medical help or contact a Poison Control Center right away. Package not child resistant. Dispose of the used patches after folding sticky ends together.

Directions
Adults 18 years and older: ■ only use one patch at a time
 ■ clean and dry affected area ■ remove patch from backing film and apply to skin (see illustration)
 ■ apply one patch to the affected area and leave in place for up to 8 to 12 hours
 ■ if pain lasts after using the first patch, a second patch may be applied for up to another 8 to 12 hours
 ■ do not use more than 2 patches per day ■ do not use for more than 3 days in a row
 ■ the used patch should be removed from the skin when a new one is applied
Children under 18 years of age: do not use; this product has not been shown to work in children

Other information ■ Store at 20-25°C (68-77°F) ■ Avoid storing product in direct sunlight
 ■ Protect product from excessive moisture
 ■ Some individuals may not experience pain relief until several hours after applying the patch

Inactive ingredients
 alicyclic saturated hydrocarbon resin, backing cloth, film, mineral oil, polyisobutylene, polyisobutylene 1,200,000, styrene-isoprene-styrene block copolymer, synthetic aluminum silicate

Questions or comments?
 Toll free 1-87-SALONPAS www.salonpas.us

LOT
 EXP.

®Registered Trade Mark XXXXXX-X

16.FS67_sachet_3s

03.SPRP original 3ct pouch commercial_210518

Labeling Format Information:			
Fonts : Helvetica Condensed Black Oblique Helvetica Condensed Bold Helvetica Narrow			
Drug Facts :	9.5pt	Leading :	6.15pt
Header :	8pt	Bullets :	6pt
Subheader :	6pt	Barlines :	2.5pt
Body Text :	6pt	Hairlines :	0.5pt
Drug Facts (Continued)	NA		
Horizontal Scale: 80%-100% Average Kerning: 0			

✂ CUT OPEN HERE ----- CUT OPEN HERE ✂

FOLD TWICE AFTER OPENING
Discard unused patches 14 days after opening
FOLD TWICE AFTER OPENING

NDC#46581-670-03 **Hisamitsu**®

for temporary relief of mild to moderate pain

- Sore Muscle
- Sprains
- Backache
- Joint Pain

HOW TO APPLY

- 1 Peel the center film.
- 2 Place on affected area.
- 3 Slide the film backward.
- 4 Slide the other film forward.

Salonpas®
Pain Relief Patch

Menthol 3%
Methyl Salicylate 10%
Topical Analgesic

APPLY FOR 8-12 HOURS

FDA APPROVED NON-PRESCRIPTION PAIN RELIEVING PATCH
EFFECTIVENESS CONFIRMED IN CLINICAL TRIAL

3 PATCHES
2 3/4" x 3 15/16" (7cm x 10cm)

DO NOT USE MORE THAN ONE SALONPAS PATCH AT A TIME. SEE DIRECTIONS.

Package not child resistant. Keep out of reach of children.

Manufactured by Hisamitsu Pharmaceutical Co., Inc. JAPAN SAGA TOSU MADE IN JAPAN
Distributed by Hisamitsu America, Inc. Florham Park, NJ 07932

3 46581 67003 5

✂ CUT OPEN HERE ----- CUT OPEN HERE ✂

minty scent

Drug Facts

Active ingredients (in each patch)	Purpose
Menthol 3%	Topical analgesic
Methyl salicylate 10% (NSAID: nonsteroidal anti-inflammatory drug)	Topical analgesic

Uses Temporarily relieves mild to moderate aches & pains of muscles & joints associated with:
 ■ strains ■ sprains ■ simple backache ■ arthritis ■ bruises

Warnings
For external use only
Stomach bleeding warning: This product contains an NSAID, which may cause stomach bleeding. The chance is small but higher if you:
 ■ are age 60 or older
 ■ have had stomach ulcers or bleeding problems ■ take a blood thinning (anticoagulant) or steroid drug
 ■ take other drugs containing an NSAID (aspirin, ibuprofen, naproxen, or others)
 ■ have 3 or more alcoholic drinks every day while using this product
 ■ take more or for a longer time than directed

Do not use
 ■ on the face or rashes ■ on wounds or damaged skin ■ if allergic to aspirin or other NSAIDs
 ■ with a heating pad ■ when sweating (such as from exercise or heat)
 ■ any patch from a pouch that has been open for 14 or more days ■ right before or after heart surgery

Ask a doctor before use if
 ■ you are allergic to topical products ■ the stomach bleeding warning applies to you
 ■ you are taking a diuretic ■ you have high blood pressure, heart disease, or kidney disease

When using this product ■ wash hands after applying or removing patch. Avoid contact with eyes. If eye contact occurs, rinse thoroughly with water.
 ■ the risk of heart attack or stroke may increase if you use more than directed or for longer than directed

Stop use and ask a doctor if
 ■ stomach pain or upset gets worse or lasts
 ■ you feel faint, vomit blood, or have bloody or black stools. These are signs of stomach bleeding.
 ■ rash, itching or skin irritation develops ■ condition worsens ■ symptoms last for more than 3 days
 ■ symptoms clear up and occur again within a few days

If pregnant or breast-feeding, ask a health professional before use. It is especially important not to use methyl salicylate at 20 weeks or later in pregnancy unless definitely directed to do so by a doctor because it may cause problems in the unborn child or complications during delivery.
Keep out of reach of children. If put in mouth, get medical help or contact a Poison Control Center right away. Package not child resistant. Dispose of the used patches after folding sticky ends together.

Directions
Adults 18 years and older:
 ■ only use one patch at a time
 ■ clean and dry affected area ■ remove patch from backing film and apply to skin (see illustration)
 ■ apply one patch to the affected area and leave in place for up to 8 to 12 hours
 ■ if pain lasts after using the first patch, a second patch may be applied for up to another 8 to 12 hours
 ■ do not use more than 2 patches per day ■ do not use for more than 3 days in a row
 ■ the used patch should be removed from the skin when a new one is applied
Children under 18 years of age: do not use; this product has not been shown to work in children

Other information ■ Store at 20-25°C (68-77°F) ■ Avoid storing product in direct sunlight
 ■ Protect product from excessive moisture
 ■ Some individuals may not experience pain relief until several hours after applying the patch

Inactive ingredients
 alicyclic saturated hydrocarbon resin, backing cloth, film, mineral oil, polyisobutylene, polyisobutylene 1,200,000, styrene-isoprene-styrene block copolymer, synthetic aluminum silicate

Questions or comments?
 Toll free 1-87-SALONPAS www.salonpas.us

LOT: _____
EXP: _____

®Registered Trade Mark XXXXXX-X

02.FS67_sachet_3s

04.SPRP original 3ct inner pouch_210518

Labeling Format Information:			
Fonts : Helvetica Condensed Black Oblique			
Helvetica Condensed Bold			
Helvetica Narrow			
Drug Facts :	9.5pt	Leading :	6.15pt
Header :	8pt	Bullets :	6pt
Subheader :	6pt	Barlines :	2.5pt
Body Text :	6pt	Hairlines :	0.5pt
Drug Facts (Continued)	NA		
Horizontal Scale: 80%-100%		Average Kerning: 0	

✂ CUT OPEN HERE ----- CUT OPEN HERE ✂

FOLD TWICE AFTER OPENING

Discard unused patches 14 days after opening

FOLD TWICE AFTER OPENING

HOW TO APPLY



1
Peel the center film.



2
Place on affected area.



3
Slide the film backward.



4
Slide the other film forward.



Salonpas®
Pain Relief Patch

Menthol 3%
Methyl Salicylate 10%
Topical Analgesic

3 PATCHES
 2 3/4" X 3 15/16" (7cm X 10cm)

✂ **DO NOT USE MORE THAN ONE SALONPAS PATCH AT A TIME. SEE DIRECTIONS.**

Package not child resistant.
 Keep out of reach of children.

Hisamitsu®
 Manufactured by
Hisamitsu Pharmaceutical Co., Inc.
 JAPAN SAGA TOSU

Distributed by
Hisamitsu America, Inc.
 Florham Park, NJ 07932

MADE IN JAPAN

LOT

EXP.

✂ CUT OPEN HERE ----- CUT OPEN HERE ✂

Salonpas® Pain Relief Patch *Menthol 3%, Methyl Salicylate 10%* minty scent

Drug Facts	Purpose
Active ingredients (in each patch)	
Menthol 3%.....	Topical analgesic
Methyl salicylate 10% (NSAID: nonsteroidal anti-inflammatory drug).....	Topical analgesic
Uses Temporarily relieves mild to moderate aches & pains of muscles & joints associated with: ■ strains ■ sprains ■ simple backache ■ arthritis ■ bruises	
Warnings	
For external use only	
Stomach bleeding warning: This product contains an NSAID, which may cause stomach bleeding. The chance is small but higher if you: ■ are age 60 or older ■ have had stomach ulcers or bleeding problems ■ take a blood thinning (anticoagulant) or steroid drug ■ take other drugs containing an NSAID [aspirin, ibuprofen, naproxen, or others] ■ have 3 or more alcoholic drinks every day while using this product ■ take more or for a longer time than directed	
Do not use ■ on the face or rashes ■ on wounds or damaged skin ■ if allergic to aspirin or other NSAIDs ■ with a heating pad ■ when sweating (such as from exercise or heat) ■ any patch from a pouch that has been open for 14 or more days ■ right before or after heart surgery	
Ask a doctor before use if ■ you are allergic to topical products ■ the stomach bleeding warning applies to you ■ you are taking a diuretic ■ you have high blood pressure, heart disease, or kidney disease	
When using this product ■ wash hands after applying or removing patch. Avoid contact with eyes. If eye contact occurs, rinse thoroughly with water. ■ the risk of heart attack or stroke may increase if you use more than directed or for longer than directed	
Stop use and ask a doctor if ■ stomach pain or upset gets worse or lasts ■ you feel faint, vomit blood, or have bloody or black stools. These are signs of stomach bleeding. ■ rash, itching or skin irritation develops ■ condition worsens ■ symptoms last for more than 3 days ■ symptoms clear up and occur again within a few days	
If pregnant or breast-feeding , ask a health professional before use. It is especially important not to use methyl salicylate at 20 weeks or later in pregnancy unless definitely directed to do so by a doctor because it may cause problems in the unborn child or complications during delivery.	
Keep out of reach of children. If put in mouth, get medical help or contact a Poison Control Center right away. Package not child resistant. Dispose of the used patches after folding sticky ends together.	
Directions	
Adults 18 years and older: ■ only use one patch at a time ■ clean and dry affected area ■ remove patch from backing film and apply to skin (see illustration) ■ apply one patch to the affected area and leave in place for up to 8 to 12 hours ■ if pain lasts after using the first patch, a second patch may be applied for up to another 8 to 12 hours ■ do not use more than 2 patches per day ■ do not use for more than 3 days in a row ■ the used patch should be removed from the skin when a new one is applied	
Children under 18 years of age: do not use; this product has not been shown to work in children	
Other information ■ Store at 20-25°C (68-77°F) ■ Avoid storing product in direct sunlight ■ Protect product from excessive moisture ■ Some individuals may not experience pain relief until several hours after applying the patch	
Inactive ingredients alicyclic saturated hydrocarbon resin, backing cloth, film, mineral oil, polyisobutylene, polyisobutylene 1,200,000, styrene-isoprene-styrene block copolymer, synthetic aluminum silicate	
Questions or comments? Toll free 1-87-SALONPAS www.salonpas.us ®Registered Trade Mark XXXXXX-X	

03.FS67_sachet_5s 210513

Labeling Format Information:			
Fonts : Helvetica Condensed Black Oblique Helvetica Condensed Bold Helvetica Narrow			
Drug Facts :	9,5pt	Leading :	6,15pt
Header :	8pt	Bullets :	6pt
Subheader :	6pt	Barlines :	2,5pt
Body Text :	6pt	Hairlines :	0,4pt
Drug Facts (Continued) :	NA		
Horizontal Scale: 80%-100% Average Kerning: 0			

CUT OPEN HERE ----- CUT OPEN HERE

FOLD TWICE AFTER OPENING

Discard unused patches 14 days after opening

FOLD TWICE AFTER OPENING

HOW TO APPLY



1 Peel the center film.



2 Place on affected area.



3 Slide the film backward.



4 Slide the other film forward.



Salonpas
Pain Relief Patch

Menthol 3%
Methyl Salicylate 10%
Topical Analgesic

5 PATCHES
2 3/4" x 3 15/16" (7cm x 10cm)

DO NOT USE MORE THAN ONE SALONPAS PATCH AT A TIME. SEE DIRECTIONS.

*Package not child resistant.
Keep out of reach of children.*

Hisamitsu
Manufactured by
Hisamitsu Pharmaceutical Co., Inc.
408, Tashirodaikan-machi, Tosu, Saga, Japan

Distributed by
Hisamitsu America, Inc.
Florham Park, NJ 07932

MADE IN JAPAN

LOT _____
EXP. _____

CUT OPEN HERE ----- CUT OPEN HERE

Salonpas® Pain Relief Patch Menthol 3%, Methyl Salicylate 10% minty scent

Drug Facts

Active ingredients (in each patch)	Purpose
Menthol 3%	Topical analgesic
Methyl salicylate 10% (NSAID: nonsteroidal anti-inflammatory drug)	Topical analgesic

Uses Temporarily relieves mild to moderate aches & pains of muscles & joints associated with:
 ■ strains ■ sprains ■ simple backache ■ arthritis ■ bruises

Warnings
For external use only

Stomach bleeding warning:
This product contains an NSAID, which may cause stomach bleeding. The chance is small but higher if you:
 ■ are age 60 or older ■ have had stomach ulcers or bleeding problems
 ■ take a blood thinning (anticoagulant) or steroid drug
 ■ take other drugs containing an NSAID (aspirin, ibuprofen, naproxen, or others)
 ■ have 3 or more alcoholic drinks every day while using this product
 ■ take more or for a longer time than directed

Do not use
 ■ on the face or rashes ■ on wounds or damaged skin ■ if allergic to aspirin or other NSAIDs
 ■ with a heating pad ■ when sweating (such as from exercise or heat)
 ■ any patch from a pouch that has been open for 14 or more days ■ right before or after heart surgery

Ask a doctor before use if
 ■ you are allergic to topical products ■ the stomach bleeding warning applies to you
 ■ you are taking a diuretic ■ you have high blood pressure, heart disease, or kidney disease

When using this product ■ wash hands after applying or removing patch. Avoid contact with eyes.
 If eye contact occurs, rinse thoroughly with water.
 ■ the risk of heart attack or stroke may increase if you use more than directed or for longer than directed

Stop use and ask a doctor if
 ■ stomach pain or upset gets worse or lasts
 ■ you feel faint, vomit blood, or have bloody or black stools. These are signs of stomach bleeding.
 ■ rash, itching or skin irritation develops ■ condition worsens ■ symptoms last for more than 3 days
 ■ symptoms clear up and occur again within a few days

If pregnant or breast-feeding, ask a health professional before use. It is especially important not to use methyl salicylate at 20 weeks or later in pregnancy unless definitely directed to do so by a doctor because it may cause problems in the unborn child or complications during delivery.

Keep out of reach of children. If put in mouth, get medical help or contact a Poison Control Center right away. Package not child resistant. Dispose of the used patches after folding sticky ends together.

Directions

Adults 18 years and older: ■ only use one patch at a time
 ■ clean and dry affected area ■ remove patch from backing film and apply to skin (see illustration)
 ■ apply one patch to the affected area and leave in place for up to 8 to 12 hours
 ■ if pain lasts after using the first patch, a second patch may be applied for up to another 8 to 12 hours
 ■ do not use more than 2 patches per day ■ do not use for more than 3 days in a row
 ■ the used patch should be removed from the skin when a new one is applied

Children under 18 years of age: do not use; this product has not been shown to work in children

Other information
 ■ Store at 20-25°C (68-77°F) ■ Avoid storing product in direct sunlight
 ■ Protect product from excessive moisture
 ■ Some individuals may not experience pain relief until several hours after applying the patch

Inactive ingredients alicyclic saturated hydrocarbon resin, backing cloth, film, mineral oil, polyisobutylene, polyisobutylene 1,200,000, styrene-isoprene-styrene block copolymer, synthetic aluminum silicate

Questions or comments?
Toll free 1-87-SALONPAS www.salonpas.us ®Registered Trade Mark 3P116T-0

Labeling Format Information:			
Fonts : Helvetica Roman , Bold , Bold Oblique			
Drug Facts :	9.5pt	Leading :	6.5pt
Header :	8pt	Bullets :	5pt
Subheader :	6pt	Barlines :	2.5pt
Body Text :	6pt	Hairlines :	0.5pt
Horizontal Scale: 80%-100%		Average Kerning: 0	

6/5 **Salonpas**
 Pain Relief Patch
 Menthol 3%, Methyl Salicylate 10%
 PATCHES

Manufactured by
 Hisamitsu Pharmaceutical Co., Inc.
 JAPAN SAGA TOSU
 MADE IN JAPAN

Distributed by
 Hisamitsu America, Inc.
 Florham Park, NJ 07932
 ®Registered Trade Mark

Salonpas[®] Pain Relief Patch **6/5**

Menthol 3%, Methyl Salicylate 10% PATCHES



**BONUS PACK!
ONE FREE PATCH**

Salonpas[®] Pain Relief Patch

Menthol 3%
Methyl Salicylate 10%
Topical Analgesic

APPLY FOR 8-12 HOURS

6/5 PATCHES
2 3/4" x 3 15/16" (7cm x 10cm)

DO NOT USE MORE THAN ONE SALONPAS PATCH AT A TIME. SEE DIRECTIONS.

LOT: _____
EXP: _____

Hisamitsu
NDC#46581-670-06

for temporary relief of mild to moderate pain

- Sore Muscle
- Sprains
- Backache
- Joint Pain

6/5 **Salonpas**
Pain Relief Patch
Menthol 3%, Methyl Salicylate 10% PATCHES

Salonpas[®] Pain Relief Patch
Menthol 3%, Methyl Salicylate 10%

HOW TO APPLY

- Peel the center film.
- Place on affected area.
- Slide the film backward.
- Slide the other film forward.

PRESS OPEN

minty scent

Salonpas[®] Pain Relief Patch
Menthol 3%, Methyl Salicylate 10%

Drug Facts	Purpose
Active ingredients (in each patch)	
Menthol 3%.....	Topical analgesic
Methyl salicylate 10% (NSAID: nonsteroidal anti-inflammatory drug).....	Topical analgesic

Uses
Temporarily relieves mild to moderate aches & pains of muscles & joints associated with:
 ■ strains ■ sprains ■ simple backache ■ arthritis ■ bruises

Warnings
For external use only

Stomach bleeding warning: This product contains an NSAID, which may cause stomach bleeding. The chance is small but higher if you:
 ■ are age 60 or older ■ have had stomach ulcers or bleeding problems
 ■ take a blood thinning (anticoagulant) or steroid drug
 ■ take other drugs containing an NSAID [aspirin, ibuprofen, naproxen, or others]
 ■ have 3 or more alcoholic drinks every day while using this product
 ■ take more or for a longer time than directed

Do not use
 ■ on the face or rashes ■ on wounds or damaged skin ■ if allergic to aspirin or other NSAIDs
 ■ with a heating pad ■ when sweating (such as from exercise or heat)
 ■ any patch from a pouch that has been open for 14 or more days ■ right before or after heart surgery

Ask a doctor before use if
 ■ you are allergic to topical products ■ the stomach bleeding warning applies to you
 ■ you are taking a diuretic ■ you have high blood pressure, heart disease, or kidney disease

When using this product
 ■ wash hands after applying or removing patch. Avoid contact with eyes. If eye contact occurs, rinse thoroughly with water.
 ■ the risk of heart attack or stroke may increase if you use more than directed or for longer than directed

Stop use and ask a doctor if
 ■ stomach pain or upset gets worse or lasts
 ■ you feel faint, vomit blood, or have bloody or black stools. These are signs of stomach bleeding.
 ■ rash, itching or skin irritation develops ■ condition worsens ■ symptoms last for more than 3 days
 ■ symptoms clear up and occur again within a few days

If pregnant or breast-feeding, ask a health professional before use. It is especially important not to use methyl salicylate at 20 weeks or later in pregnancy unless definitely directed to do so by a doctor because it may cause problems in the unborn child or complications during delivery.

Keep out of reach of children. If put in mouth, get medical help or contact a Poison Control Center right away. Package not child resistant. Dispose of the used patches after folding sticky ends together.

Directions
Adults 18 years and older:
 ■ clean and dry affected area ■ only use one patch at a time
 ■ apply one patch to the affected area and leave in place for up to 8 to 12 hours
 ■ if pain lasts after using the first patch, a second patch may be applied for up to another 8 to 12 hours
 ■ do not use more than 2 patches per day ■ do not use for more than 3 days in a row
 ■ the used patch should be removed from the skin when a new one is applied

Children under 18 years of age: do not use; this product has not been shown to work in children

Other information
 ■ Store at 20-25°C (68-77°F) ■ Avoid storing product in direct sunlight
 ■ Protect product from excessive moisture
 ■ Some individuals may not experience pain relief until several hours after applying the patch

Inactive ingredients
 alicyclic saturated hydrocarbon resin, backing cloth, film, mineral oil, polyisobutylene, polyisobutylene 1,200,000, styrene-isoprene-styrene block copolymer, synthetic aluminum silicate

Questions or comments?
 Toll free 1-87-SALONPAS www.salonpas.us

27.FS67_case_15s

08.SPRP original 15ct box_210518

Labeling Format Information:			
Fonts :	Helvetica Roman , Bold , Bold Oblique		
Drug Facts :	9.5pt	Leading :	6.5pt
Header :	8pt	Bullets :	5pt
Subheader :	6pt	Barlines :	2.5pt
Body Text :	6pt	Hairlines :	0.5pt
Horizontal Scale: 80%-100%		Average Kerning: 0	

15
PATCHES

Salonpas®
Pain Relief Patch
Menthol 3%, Methyl Salicylate 10%

Manufactured by
Hisamitsu Pharmaceutical Co., Inc.
JAPAN SAGA TOSU
MADE IN JAPAN

Distributed by
Hisamitsu America, Inc.
Florham Park, NJ 07932

®:Registered Trade Mark



3 46581 67015 8

Salonpas®
Pain Relief Patch
Menthol 3%, Methyl Salicylate 10%



Hisamitsu®
NDC#46581-670-15

for temporary relief of mild to moderate pain

- Sore Muscle
- Sprains
- Backache
- Joint Pain

Salonpas®
Pain Relief Patch
Menthol 3%, Methyl Salicylate 10%

HOW TO APPLY

<p>for Shoulder</p>  <p>1 Peel the center film.</p>  <p>2 Place on affected area.</p>  <p>3 Slide the film backward.</p>  <p>4 Slide the other film forward.</p>	<p>for Back</p>  <p>1 Peel the center film.</p>  <p>2 Place on affected area.</p>  <p>3 Slide the film upward.</p>  <p>4 Slide the other film downward.</p>
--	---

15
PATCHES

Salonpas®
Pain Relief Patch
Menthol 3%, Methyl Salicylate 10%

minty scent

APPLY FOR 8-12 HOURS

15 PATCHES
2 3/4" x 3 15/16" (7cm x 10cm)

DO NOT USE MORE THAN ONE SALONPAS PATCH AT A TIME. SEE DIRECTIONS.

Package not child resistant.
Keep out of reach of children.

Salonpas® Pain Relief Patch
Menthol 3%, Methyl Salicylate 10% **15** PATCHES

LOT

EXP.

Salonpas®
Pain Relief Patch
Menthol 3%, Methyl Salicylate 10%

PRESS OPEN

Drug Facts

Active ingredients (in each patch)	Purpose
Menthol 3%	Topical analgesic
Methyl salicylate 10% (NSAID: nonsteroidal anti-inflammatory drug)	Topical analgesic

Uses
Temporarily relieves mild to moderate aches & pains of muscles & joints associated with:
 ■ strains ■ sprains ■ simple backache ■ arthritis ■ bruises

Warnings
For external use only
Stomach bleeding warning: This product contains an NSAID, which may cause stomach bleeding. The chance is small but higher if you:
 ■ are age 60 or older ■ have had stomach ulcers or bleeding problems
 ■ take a blood thinning (anticoagulant) or steroid drug
 ■ take other drugs containing an NSAID (aspirin, ibuprofen, naproxen, or others)
 ■ have 3 or more alcoholic drinks every day while using this product
 ■ take more or for a longer time than directed

Do not use
 ■ on the face or rashes ■ on wounds or damaged skin ■ if allergic to aspirin or other NSAIDs
 ■ with a heating pad ■ when sweating (such as from exercise or heat)
 ■ any patch from a pouch that has been open for 14 or more days ■ right before or after heart surgery

Ask a doctor before use if
 ■ you are allergic to topical products ■ the stomach bleeding warning applies to you
 ■ you are taking a diuretic ■ you have high blood pressure, heart disease, or kidney disease

When using this product
 ■ wash hands after applying or removing patch. Avoid contact with eyes. If eye contact occurs, rinse thoroughly with water.
 ■ the risk of heart attack or stroke may increase if you use more than directed or for longer than directed

Stop use and ask a doctor if
 ■ stomach pain or upset gets worse or lasts
 ■ you feel faint, vomit blood, or have bloody or black stools. These are signs of stomach bleeding.
 ■ rash, itching or skin irritation develops ■ condition worsens ■ symptoms last for more than 3 days
 ■ symptoms clear up and occur again within a few days

If pregnant or breast-feeding, ask a health professional before use. It is especially important not to use methyl salicylate at 20 weeks or later in pregnancy unless definitely directed to do so by a doctor because it may cause problems in the unborn child or complications during delivery.

Keep out of reach of children. If put in mouth, get medical help or contact a Poison Control Center right away. Package not child resistant. Dispose of the used patches after folding sticky ends together.

Directions
Adults 18 years and older:
 ■ only use one patch at a time
 ■ clean and dry affected area ■ remove patch from backing film and apply to skin (see illustration)
 ■ apply one patch to the affected area and leave in place for up to 8 to 12 hours
 ■ if pain lasts after using the first patch, a second patch may be applied for up to another 8 to 12 hours
 ■ do not use more than 2 patches per day ■ do not use for more than 3 days in a row
 ■ the used patch should be removed from the skin when a new one is applied

Children under 18 years of age: do not use; this product has not been shown to work in children

Other information
 ■ Store at 20-25°C (68-77°F) ■ Avoid storing product in direct sunlight
 ■ Protect product from excessive moisture
 ■ Some individuals may not experience pain relief until several hours after applying the patch

Inactive ingredients
 alicyclic saturated hydrocarbon resin, backing cloth, film, mineral oil, polyisobutylene, polyisobutylene 1,200,000, styrene-isoprene-styrene block copolymer, synthetic aluminum silicate

Questions or comments?
 Toll free 1-87-SALONPAS www.salonpas.us

FS67_case_20s_2_210513

Labeling Format Information:			
Fonts : Helvetica Roman , Bold , Bold Oblique			
Drug Facts :	9.5pt	Leading :	6.5pt
Header :	8pt	Bullets :	5pt
Subheader :	6pt	Barlines :	2.5pt
Body Text :	6pt	Hairlines :	0.5pt
Horizontal Scale: 80%-100%		Average Kerning: 0	

180723H

20 Patches
Salonpas®
Pain Relief Patch
 Menthol 3%, Methyl Salicylate 10%
 Manufactured by
 Hisamitsu Pharmaceutical Co., Inc.
 408, Tashirodai-kan-nachi
 Tosu, Saga, Japan
 MADE IN JAPAN
 Distributed by
 Hisamitsu America, Inc.
 Florham Park, NJ 07932
 ®Registered Trade Mark
 3 46581 67020 2

Salonpas® Pain Relief Patch 20

Menthol 3%, Methyl Salicylate 10% PATCHES



Hisamitsu®
NDC#46581-670-20

for temporary relief of mild to moderate pain

- Sore Muscle
- Sprains
- Backache
- Joint Pain

Salonpas® Pain Relief Patch

Menthol 3%
Methyl Salicylate 10%
Topical Analgesic

APPLY FOR 8-12 HOURS

20 PATCHES
2 3/4" x 3 15/16" (7cm x 10cm)

DO NOT USE MORE THAN ONE SALONPAS PATCH AT A TIME. SEE DIRECTIONS.

LOT: _____
EXP: _____

Salonpas® Pain Relief Patch
Menthol 3%, Methyl Salicylate 10% **20 PATCHES**

Salonpas® Pain Relief Patch
Menthol 3%, Methyl Salicylate 10%

20 Patches
Salonpas® Pain Relief Patch
Menthol 3%, Methyl Salicylate 10%

HOW TO APPLY

1. Peel the center film.
2. Place on affected area.
3. Slide the film backward.
4. Slide the other film forward.

Salonpas® Pain Relief Patch
Menthol 3%, Methyl Salicylate 10%

PRESS OPEN *minty scent*

Drug Facts

Active ingredients (in each patch)	Purpose
Menthol 3%	Topical analgesic
Methyl salicylate 10% (NSAID: nonsteroidal anti-inflammatory drug)	Topical analgesic

Uses
Temporarily relieves mild to moderate aches & pains of muscles & joints associated with:
 ■ strains ■ sprains ■ simple backache ■ arthritis ■ bruises

Warnings
For external use only

Stomach bleeding warning: This product contains an NSAID, which may cause stomach bleeding. The chance is small but higher if you:
 ■ are age 60 or older ■ have had stomach ulcers or bleeding problems
 ■ take a blood thinning (anticoagulant) or steroid drug
 ■ take other drugs containing an NSAID [aspirin, ibuprofen, naproxen, or others]
 ■ have 3 or more alcoholic drinks every day while using this product
 ■ take more or for a longer time than directed

Do not use
 ■ on the face or rashes ■ on wounds or damaged skin ■ if allergic to aspirin or other NSAIDs
 ■ with a heating pad ■ when sweating (such as from exercise or heat)
 ■ any patch from a pouch that has been open for 14 or more days ■ right before or after heart surgery

Ask a doctor before use if
 ■ you are allergic to topical products ■ the stomach bleeding warning applies to you
 ■ you are taking a diuretic ■ you have high blood pressure, heart disease, or kidney disease

When using this product
 ■ wash hands after applying or removing patch. Avoid contact with eyes. If eye contact occurs, rinse thoroughly with water.
 ■ the risk of heart attack or stroke may increase if you use more than directed or for longer than directed

Stop use and ask a doctor if
 ■ stomach pain or upset gets worse or lasts
 ■ you feel faint, vomit blood, or have bloody or black stools. These are signs of stomach bleeding.
 ■ rash, itching or skin irritation develops ■ condition worsens ■ symptoms last for more than 3 days
 ■ symptoms clear up and occur again within a few days

If pregnant or breast-feeding, ask a health professional before use. It is especially important not to use methyl salicylate at 20 weeks or later in pregnancy unless definitely directed to do so by a doctor because it may cause problems in the unborn child or complications during delivery.

Keep out of reach of children. If put in mouth, get medical help or contact a Poison Control Center right away. Package not child resistant. Dispose of the used patches after folding sticky ends together.

Directions
Adults 18 years and older:
 ■ clean and dry affected area ■ only use one patch at a time
 ■ apply one patch to the affected area and leave in place for up to 8 to 12 hours
 ■ if pain lasts after using the first patch, a second patch may be applied for up to another 8 to 12 hours
 ■ do not use more than 2 patches per day ■ do not use for more than 3 days in a row
 ■ the used patch should be removed from the skin when a new one is applied
Children under 18 years of age: do not use; this product has not been shown to work in children

Other information
 ■ Store at 20-25°C (68-77°F) ■ Avoid storing product in direct sunlight
 ■ Protect product from excessive moisture
 ■ Some individuals may not experience pain relief until several hours after applying the patch

Inactive ingredients
 alicyclic saturated hydrocarbon resin, backing cloth, film, mineral oil, polyisobutylene, polyisobutylene 1,200,000, styrene-isoprene-styrene block copolymer, synthetic aluminum silicate

Questions or comments?
 Toll free 1-87-SALONPAS www.salonpas.us

17.FS67_sachet_L1s_2_210513

Labeling Format Information:		
Fonts : Helvetica Condensed Black Oblique Helvetica Condensed Bold Helvetica Narrow		
Drug Facts :	9.5pt	Leading : 6.15pt
Header :	8pt	Bullets : 6pt
Subheader :	6pt	Barlines : 2.5pt
Body Text :	6pt	Hairlines : 0.5pt
Drug Facts (Continued) NA		
Horizontal Scale: 80%-100% Average Kerning: 0		

180904H

LARGE



NDC#46581-675-99

3 15/16" X 5 1/2"

HOW TO APPLY



1 Peel the center film. 2 Place on affected area.
3 Slide a film. 4 Slide the other film.

for temporary relief of mild to moderate pain

- Backache
- Sore Muscle
- Strains
- Bruises

Salonpas®

Pain Relief Patch

**Menthol 3%
Methyl Salicylate 10%
Topical Analgesic**

APPLY FOR
8-12
HOURS

FDA APPROVED NON-PRESCRIPTION PAIN RELIEVING PATCH
EFFECTIVENESS CONFIRMED IN CLINICAL TRIAL

1

LARGE PATCH
3 15/16" X 5 1/2" (10cm X 14cm)

Package not child resistant.
Keep out of reach of children.

⚠ DO NOT USE MORE THAN ONE SALONPAS PATCH AT A TIME. SEE DIRECTIONS.

Manufactured by
Hisamitsu Pharmaceutical Co., Inc.
JAPAN SAGA TOSU
MADE IN JAPAN

Distributed by
Hisamitsu America, Inc.
Florham Park, NJ 07932

FREE SAMPLE
NOT FOR RE-SALE

✂ CUT OPEN HERE ----- CUT OPEN HERE ✂

Drug Facts

minty scent

Active ingredients (in each patch)

Menthol 3%..... Topical analgesic
Methyl salicylate 10% (NSAID: nonsteroidal anti-inflammatory drug)..... Topical analgesic

Uses Temporarily relieves mild to moderate aches & pains of muscles & joints associated with:

- strains ■ sprains ■ simple backache ■ arthritis ■ bruises

Warnings
For external use only

Stomach bleeding warning: This product contains an NSAID, which may cause stomach bleeding. The chance is small but higher if you:

- are age 60 or older
- have had stomach ulcers or bleeding problems ■ take a blood thinning (anticoagulant) or steroid drug
- take other drugs containing an NSAID (aspirin, ibuprofen, naproxen, or others)
- have 3 or more alcoholic drinks every day while using this product
- take more or for a longer time than directed

Do not use

- on the face or rashes ■ on wounds or damaged skin ■ if allergic to aspirin or other NSAIDs
- with a heating pad ■ when sweating (such as from exercise or heat)
- any patch from a pouch that has been open for 14 or more days ■ right before or after heart surgery

Ask a doctor before use if

- you are allergic to topical products ■ the stomach bleeding warning applies to you
- you are taking a diuretic ■ you have high blood pressure, heart disease, or kidney disease

When using this product ■ wash hands after applying or removing patch. Avoid contact with eyes. If eye contact occurs, rinse thoroughly with water.

- the risk of heart attack or stroke may increase if you use more than directed or for longer than directed

Stop use and ask a doctor if

- stomach pain or upset gets worse or lasts
- you feel faint, vomit blood, or have bloody or black stools. These are signs of stomach bleeding.
- rash, itching or skin irritation develops ■ condition worsens ■ symptoms last for more than 3 days
- symptoms clear up and occur again within a few days

If pregnant or breast-feeding, ask a health professional before use. It is especially important not to use methyl salicylate at 20 weeks or later in pregnancy unless definitely directed to do so by a doctor because it may cause problems in the unborn child or complications during delivery.

Keep out of reach of children. If put in mouth, get medical help or contact a Poison Control Center right away. Package not child resistant. Dispose of the used patches after folding sticky ends together.

Directions

Adults 18 years and older:

- only use one patch at a time
- clean and dry affected area ■ remove patch from backing film and apply to skin (see illustration)
- apply one patch to the affected area and leave in place for up to 8 to 12 hours
- if pain lasts after using the first patch, a second patch may be applied for up to another 8 to 12 hours
- do not use more than 2 patches per day ■ do not use for more than 3 days in a row
- the used patch should be removed from the skin when a new one is applied

Children under 18 years of age: do not use; this product has not been shown to work in children

Other information

- Store at 20-25°C (68-77°F) ■ Avoid storing product in direct sunlight
- Protect product from excessive moisture
- Some individuals may not experience pain relief until several hours after applying the patch

Inactive ingredients
alicyclic saturated hydrocarbon resin, backing cloth, film, mineral oil, polyisobutylene, polyisobutylene 1,200,000, styrene-isoprene-styrene block copolymer, synthetic aluminum silicate

Questions or comments?
Toll free 1-87-SALONPAS www.salonpas.us

LOT

EXP.

®Registered Trade Mark 2P138T-0

FS67_sachet_L1s_210513

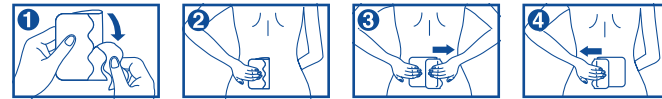
Labeling Format Information:		
Fonts : Helvetica Condensed Black Oblique		
Helvetica Condensed Bold		
Helvetica Narrow		
Drug Facts :	9.5pt	Leading : 6.15pt
Header :	8pt	Bullets : 6pt
Subheader :	6pt	Barlines : 2.5pt
Body Text :	6pt	Hairlines : 0.5pt
Drug Facts (Continued) NA		
Horizontal Scale: 80%-100% Average Kerning: 0		

PANTONE
293C

CUT OPEN HERE ----- CUT OPEN HERE

HOW TO APPLY

NDC#46581-675-01



1 Peel the center film.

2 Place on affected area.

3 Slide a film.

4 Slide the other film.



**Menthol 3%
Methyl Salicylate 10%
Topical Analgesic**



**FDA APPROVED NON-PRESCRIPTION PAIN RELIEVING PATCH
EFFECTIVENESS CONFIRMED IN CLINICAL TRIAL**

1 LARGE PATCH
3 15/16" X 5 1/2" (10cm X 14cm)

※ DO NOT USE MORE THAN ONE SALONPAS PATCH AT A TIME. SEE DIRECTIONS.

Hisamitsu®
Manufactured by
Hisamitsu Pharmaceutical Co., Inc.
408, Tashirodaikan-machi, Tosu, Saga, Japan
Distributed by
Hisamitsu America, Inc.
Florham Park, NJ 07932
MADE IN JAPAN

Package not child resistant.
Keep out of reach of children.



CUT OPEN HERE ----- CUT OPEN HERE

Drug Facts

Active ingredients (in each patch)
Menthol 3%..... Topical analgesic
Methyl salicylate 10% (NSAID: nonsteroidal anti-inflammatory drug)..... Topical analgesic

Uses Temporarily relieves mild to moderate aches & pains of muscles & joints associated with:
■ strains ■ sprains ■ simple backache ■ arthritis ■ bruises

Warnings
For external use only
Stomach bleeding warning: This product contains an NSAID, which may cause stomach bleeding. The chance is small but higher if you:
■ are age 60 or older
■ have had stomach ulcers or bleeding problems ■ take a blood thinning (anticoagulant) or steroid drug
■ take other drugs containing an NSAID (aspirin, ibuprofen, naproxen, or others)
■ have 3 or more alcoholic drinks every day while using this product
■ take more or for a longer time than directed

Do not use
■ on the face or rashes ■ on wounds or damaged skin ■ if allergic to aspirin or other NSAIDs
■ with a heating pad ■ when sweating (such as from exercise or heat)
■ any patch from a pouch that has been open for 14 or more days ■ right before or after heart surgery

Ask a doctor before use if
■ you are allergic to topical products ■ the stomach bleeding warning applies to you
■ you are taking a diuretic ■ you have high blood pressure, heart disease, or kidney disease

When using this product ■ wash hands after applying or removing patch. Avoid contact with eyes.
If eye contact occurs, rinse thoroughly with water.
■ the risk of heart attack or stroke may increase if you use more than directed or for longer than directed

Stop use and ask a doctor if
■ stomach pain or upset gets worse or lasts
■ you feel faint, vomit blood, or have bloody or black stools. These are signs of stomach bleeding.
■ rash, itching or skin irritation develops ■ condition worsens ■ symptoms last for more than 3 days
■ symptoms clear up and occur again within a few days

Directions
Adults 18 years and older:
■ clean and dry affected area ■ only use one patch at a time
■ apply one patch to the affected area and leave in place for up to 8 to 12 hours
■ if pain lasts after using the first patch, a second patch may be applied for up to another 8 to 12 hours
■ do not use more than 2 patches per day ■ do not use for more than 3 days in a row
■ the used patch should be removed from the skin when a new one is applied
Children under 18 years of age: do not use; this product has not been shown to work in children

Other information ■ Store at 20-25°C (68-77°F) ■ Avoid storing product in direct sunlight
■ Protect product from excessive moisture
■ Some individuals may not experience pain relief until several hours after applying the patch

Inactive ingredients
alicyclic saturated hydrocarbon resin, backing cloth, film, mineral oil, polyisobutylene, polyisobutylene 1,200,000, styrene-isoprene-styrene block copolymer, synthetic aluminum silicate

Questions or comments?
Toll free 1-87-SALONPAS www.salonpas.us

LOT

EXP.

®:Registered Trade Mark 2P181T-0

04.FS67_sachet_L2s

Labeling Format Information:		
Fonts : Helvetica Condensed Black Oblique Helvetica Condensed Bold Helvetica Narrow		
Drug Facts :	9.5pt	Leading : 6.15pt
Header :	8pt	Bullets : 6pt
Subheader :	6pt	Barlines : 2.5pt
Body Text :	6pt	Hairlines : 0.5pt
Drug Facts (Continued)	NA	
Horizontal Scale: 80%-100% Average Kerning: 0		

13.SPRP large 2ct inner pouch_210518

✂ CUT OPEN HERE ----- CUT OPEN HERE ✂

FOLD TWICE AFTER OPENING

Discard unused patches 14 days after opening

FOLD TWICE AFTER OPENING

HOW TO APPLY



1
Peel the center film.



2
Place on affected area.



3
Slide a film.



4
Slide the other film.



Salonpas[®]
Pain Relief Patch

Menthol 3%
Methyl Salicylate 10%
Topical Analgesic

2 LARGE PATCHES
3 15/16" x 5 1/2" (10cm x 14cm)

✂ DO NOT USE MORE THAN ONE SALONPAS PATCH AT A TIME. SEE DIRECTIONS.

Package not child resistant.
Keep out of reach of children.

Hisamitsu[®]
Manufactured by
Hisamitsu Pharmaceutical Co., Inc.
JAPAN SAGA TOSU

Distributed by
Hisamitsu America, Inc.
Florham Park, NJ 07932

MADE IN JAPAN

LOT _____
EXP. _____

✂ CUT OPEN HERE ----- CUT OPEN HERE ✂

Salonpas[®] Pain Relief Patch LARGE Menthol 3%, Methyl Salicylate 10% minty scent

Drug Facts

Active ingredients (in each patch)	Purpose
Menthol 3%.....	Topical analgesic
Methyl salicylate 10% (NSAID: nonsteroidal anti-inflammatory drug).....	Topical analgesic

Uses Temporarily relieves mild to moderate aches & pains of muscles & joints associated with:
 ■ strains ■ sprains ■ simple backache ■ arthritis ■ bruises

Warnings
For external use only

Stomach bleeding warning:
This product contains an NSAID, which may cause stomach bleeding. The chance is small but higher if you:
 ■ are age 60 or older ■ have had stomach ulcers or bleeding problems
 ■ take a blood thinning (anticoagulant) or steroid drug
 ■ take other drugs containing an NSAID (aspirin, ibuprofen, naproxen, or others)
 ■ have 3 or more alcoholic drinks every day while using this product
 ■ take more or for a longer time than directed

Do not use
 ■ on the face or rashes ■ on wounds or damaged skin ■ if allergic to aspirin or other NSAIDs
 ■ with a heating pad ■ when sweating (such as from exercise or heat)
 ■ any patch from a pouch that has been open for 14 or more days ■ right before or after heart surgery

Ask a doctor before use if
 ■ you are allergic to topical products ■ the stomach bleeding warning applies to you
 ■ you are taking a diuretic ■ you have high blood pressure, heart disease, or kidney disease

When using this product ■ wash hands after applying or removing patch. Avoid contact with eyes.
 If eye contact occurs, rinse thoroughly with water.
 ■ the risk of heart attack or stroke may increase if you use more than directed or for longer than directed

Stop use and ask a doctor if
 ■ stomach pain or upset gets worse or lasts
 ■ you feel faint, vomit blood, or have bloody or black stools. These are signs of stomach bleeding.
 ■ rash, itching or skin irritation develops ■ condition worsens ■ symptoms last for more than 3 days
 ■ symptoms clear up and occur again within a few days

If pregnant or breast-feeding, ask a health professional before use. It is especially important not to use methyl salicylate at 20 weeks or later in pregnancy unless definitely directed to do so by a doctor because it may cause problems in the unborn child or complications during delivery.
Keep out of reach of children. If put in mouth, get medical help or contact a Poison Control Center right away. Package not child resistant. Dispose of the used patches after folding sticky ends together.

Directions
Adults 18 years and older: ■ only use one patch at a time
 ■ clean and dry affected area ■ remove patch from backing film and apply to skin (see illustration)
 ■ apply one patch to the affected area and leave in place for up to 8 to 12 hours
 ■ if pain lasts after using the first patch, a second patch may be applied for up to another 8 to 12 hours
 ■ do not use more than 2 patches per day ■ do not use for more than 3 days in a row
 ■ the used patch should be removed from the skin when a new one is applied
Children under 18 years of age: do not use; this product has not been shown to work in children

Other information
 ■ Store at 20-25°C (68-77°F) ■ Avoid storing product in direct sunlight
 ■ Protect product from excessive moisture
 ■ Some individuals may not experience pain relief until several hours after applying the patch

Inactive ingredients alicyclic saturated hydrocarbon resin, backing cloth, film, mineral oil, polyisobutylene, polyisobutylene 1,200,000, styrene-isoprene-styrene block copolymer, synthetic aluminum silicate

Questions or comments?
 Toll free 1-87-SALONPAS www.salonpas.us ®:Registered Trade Mark XXXXXX-X

14.SPRP large 3ct inner pouch 210513

Labeling Format Information:			
Fonts : Helvetica Condensed Black Oblique			
Helvetica Condensed Bold			
Helvetica Narrow			
Drug Facts :	9.5pt	Leading :	6.15pt
Header :	8pt	Bullets :	6pt
Subheader :	6pt	Barlines :	2.5pt
Body Text :	6pt	Hairlines :	0.5pt
Drug Facts (Continued) NA			
Horizontal Scale: 80%-100% Average Kerning: 0			

✂ CUT OPEN HERE ----- CUT OPEN HERE ✂

FOLD TWICE AFTER OPENING

Discard unused patches 14 days after opening

FOLD TWICE AFTER OPENING

HOW TO APPLY



1 Peel the center film.



2 Place on affected area.



3 Slide a film.



4 Slide the other film.



Salonpas[®]
Pain Relief Patch

Menthol 3%
Methyl Salicylate 10%
Topical Analgesic

3 LARGE PATCHES
3 1/8" x 5 1/2" (10cm x 14cm)

✂ DO NOT USE MORE THAN ONE SALONPAS PATCH AT A TIME. SEE DIRECTIONS.

Package not child resistant.
Keep out of reach of children.

Hisamitsu[®]
Manufactured by
Hisamitsu Pharmaceutical Co., Inc.
JAPAN SAGA TOSU

Distributed by
Hisamitsu America, Inc.
Florham Park, NJ 07932

MADE IN JAPAN

LOT

EXP.

✂ CUT OPEN HERE ----- CUT OPEN HERE ✂

Salonpas[®] Pain Relief Patch LARGE Menthol 3%, Methyl Salicylate 10% minty scent

Drug Facts	
Active ingredients (in each patch)	Purpose
Menthol 3%.....	Topical analgesic
Methyl salicylate 10% (NSAID: nonsteroidal anti-inflammatory drug).....	Topical analgesic
Uses Temporarily relieves mild to moderate aches & pains of muscles & joints associated with:	
<ul style="list-style-type: none"> ■ strains ■ sprains ■ simple backache ■ arthritis ■ bruises 	
Warnings	
For external use only	
Stomach bleeding warning:	
This product contains an NSAID, which may cause stomach bleeding. The chance is small but higher if you:	
<ul style="list-style-type: none"> ■ are age 60 or older ■ have had stomach ulcers or bleeding problems ■ take a blood thinning (anticoagulant) or steroid drug ■ take other drugs containing an NSAID [aspirin, ibuprofen, naproxen, or others] ■ have 3 or more alcoholic drinks every day while using this product ■ take more or for a longer time than directed 	
Do not use	
<ul style="list-style-type: none"> ■ on the face or rashes ■ on wounds or damaged skin ■ if allergic to aspirin or other NSAIDs ■ with a heating pad ■ when sweating (such as from exercise or heat) ■ any patch from a pouch that has been open for 14 or more days ■ right before or after heart surgery 	
Ask a doctor before use if	
<ul style="list-style-type: none"> ■ you are allergic to topical products ■ the stomach bleeding warning applies to you ■ you are taking a diuretic ■ you have high blood pressure, heart disease, or kidney disease 	
When using this product ■ wash hands after applying or removing patch. Avoid contact with eyes.	
If eye contact occurs, rinse thoroughly with water.	
■ the risk of heart attack or stroke may increase if you use more than directed or for longer than directed	
Stop use and ask a doctor if	
<ul style="list-style-type: none"> ■ stomach pain or upset gets worse or lasts ■ you feel faint, vomit blood, or have bloody or black stools. These are signs of stomach bleeding. ■ rash, itching or skin irritation develops ■ condition worsens ■ symptoms last for more than 3 days ■ symptoms clear up and occur again within a few days 	
If pregnant or breast-feeding, ask a health professional before use. It is especially important not to use methyl salicylate at 20 weeks or later in pregnancy unless definitely directed to do so by a doctor because it may cause problems in the unborn child or complications during delivery.	
Keep out of reach of children. If put in mouth, get medical help or contact a Poison Control Center right away. Package not child resistant. Dispose of the used patches after folding sticky ends together.	
Directions	
Adults 18 years and older: ■ only use one patch at a time	
<ul style="list-style-type: none"> ■ clean and dry affected area ■ remove patch from backing film and apply to skin (see illustration) ■ apply one patch to the affected area and leave in place for up to 8 to 12 hours ■ if pain lasts after using the first patch, a second patch may be applied for up to another 8 to 12 hours ■ do not use more than 2 patches per day ■ do not use for more than 3 days in a row ■ the used patch should be removed from the skin when a new one is applied 	
Children under 18 years of age: do not use; this product has not been shown to work in children	
Other information	
<ul style="list-style-type: none"> ■ Store at 20-25 °C (68-77 °F) ■ Avoid storing product in direct sunlight ■ Protect product from excessive moisture ■ Some individuals may not experience pain relief until several hours after applying the patch 	
Inactive ingredients alicyclic saturated hydrocarbon resin, backing cloth, film, mineral oil, polyisobutylene, polyisobutylene 1,200,000, styrene-isoprene-styrene block copolymer, synthetic aluminum silicate	
Questions or comments?	
Toll free 1-87-SALONPAS	www.salonpas.us
	®:Registered Trade Mark 2L772T-0

29.FS67_case_L3s

16.SPRP large 3ct box_210518

Labeling Format Information:			
Fonts : Helvetica Roman , Bold , Bold Oblique			
Drug Facts :	9.5pt	Leading :	6.5pt
Header :	8pt	Bullets :	5pt
Subheader :	6pt	Barlines :	2.5pt
Body Text :	6pt	Hairlines :	0.5pt
Horizontal Scale: 80%-100%		Average Kerning: 0	

3 PATCHES

Manufactured by
Hisamitsu Pharmaceutical Co., Inc.
JAPAN SAGA TOSU
MADE IN JAPAN

Distributed by
Hisamitsu America, Inc.
Florham Park, NJ 07932
®Registered Trade Mark

Salonpas[®] Pain Relief Patch **LARGE** 3 PATCHES

Menthol 3%, Methyl Salicylate 10%



LARGE

Hisamitsu[®] NDC#46581-675-03

for temporary relief of mild to moderate pain

- Backache
- Sore Muscle
- Sprains
- Bruises

Salonpas[®] Pain Relief Patch

Menthol 3%
Methyl Salicylate 10%
Topical Analgesic

APPLY FOR 8-12 HOURS

FDA APPROVED NON-PRESCRIPTION PAIN RELIEVING PATCH
EFFECTIVENESS CONFIRMED IN CLINICAL TRIAL

3 **LARGE** PATCHES
3 15/16" x 5 1/2" (10cm x 14cm)

Package not child resistant.
Keep out of reach of children.

DO NOT USE MORE THAN ONE SALONPAS PATCH AT A TIME. SEE DIRECTIONS.

LOT _____
EXP. _____

Salonpas[®] Pain Relief Patch **LARGE** 3 PATCHES
Menthol 3%, Methyl Salicylate 10%

3 PATCHES

Salonpas[®] Pain Relief Patch **LARGE**
Menthol 3%, Methyl Salicylate 10%

3 PATCHES

Salonpas[®] Pain Relief Patch **LARGE**
Menthol 3%, Methyl Salicylate 10%

PRESS OPEN

minty scent

Drug Facts

Active ingredients (in each patch)	Purpose
Menthol 3%	Topical analgesic
Methyl salicylate 10% (NSAID: nonsteroidal anti-inflammatory drug)	Topical analgesic

Uses
Temporarily relieves mild to moderate aches & pains of muscles & joints associated with:

- strains
- sprains
- simple backache
- arthritis
- bruises

Warnings
For external use only
Stomach bleeding warning: This product contains an NSAID, which may cause stomach bleeding. The chance is small but higher if you:

- are age 60 or older
- have had stomach ulcers or bleeding problems
- take a blood thinning (anticoagulant) or steroid drug
- take other drugs containing an NSAID [aspirin, ibuprofen, naproxen, or others]
- have 3 or more alcoholic drinks every day while using this product
- take more or for a longer time than directed

Do not use

- on the face or rashes
- on wounds or damaged skin
- if allergic to aspirin or other NSAIDs
- with a heating pad
- when sweating (such as from exercise or heat)
- any patch from a pouch that has been open for 14 or more days
- right before or after heart surgery

Ask a doctor before use if

- you are allergic to topical products
- the stomach bleeding warning applies to you
- you are taking a diuretic
- you have high blood pressure, heart disease, or kidney disease

When using this product

- wash hands after applying or removing patch. Avoid contact with eyes. If eye contact occurs, rinse thoroughly with water.
- the risk of heart attack or stroke may increase if you use more than directed or for longer than directed

Stop use and ask a doctor if

- stomach pain or upset gets worse or lasts
- you feel faint, vomit blood, or have bloody or black stools. These are signs of stomach bleeding.
- rash, itching or skin irritation develops
- condition worsens
- symptoms last for more than 3 days
- symptoms clear up and occur again within a few days

If pregnant or breast-feeding, ask a health professional before use. It is especially important not to use methyl salicylate at 20 weeks or later in pregnancy unless definitely directed to do so by a doctor because it may cause problems in the unborn child or complications during delivery.

Keep out of reach of children. If put in mouth, get medical help or contact a Poison Control Center right away. Package not child resistant. Dispose of the used patches after folding sticky ends together.

Directions
Adults 18 years and older:

- clean and dry affected area
- only use one patch at a time
- remove patch from backing film and apply to skin (see illustration)
- apply one patch to the affected area and leave in place for up to 8 to 12 hours
- if pain lasts after using the first patch, a second patch may be applied for up to another 8 to 12 hours
- do not use more than 2 patches per day
- do not use for more than 3 days in a row
- the used patch should be removed from the skin when a new one is applied

Children under 18 years of age: do not use; this product has not been shown to work in children

Other information

- Store at 20-25°C (68-77°F)
- Avoid storing product in direct sunlight
- Protect product from excessive moisture
- Some individuals may not experience pain relief until several hours after applying the patch

Inactive ingredients
alicyclic saturated hydrocarbon resin, backing cloth, film, mineral oil, polyisobutylene, polyisobutylene 1,200,000, styrene-isoprene-styrene block copolymer, synthetic aluminum silicate

Questions or comments?
Toll free 1-87-SALONPAS | www.salonpas.us

Reference ID: 4883946

FS67_case_L9s_2_210513

Labeling Format Information:			
Fonts : Helvetica Roman , Bold , Bold Oblique			
Drug Facts :	9.5pt	Leading :	6.5pt
Header :	8pt	Bullets :	5pt
Subheader :	6pt	Barlines :	2.5pt
Body Text :	6pt	Hairlines :	0.5pt
Horizontal Scale: 80%-100%		Average Kerning: 0	

PANTONE
293c

PANTONE
354c

M

Y

9 PATCHES
 Manufactured by
 Hisamitsu Pharmaceutical Co., Inc.
 JAPAN SAGA TOSU
 MADE IN JAPAN
 Distributed by
 Hisamitsu America, Inc.
 Florham Park, NJ 07932
 ®Registered Trade Mark

Salonpas® Pain Relief Patch **LARGE** 9 PATCHES

Menthol 3%, Methyl Salicylate 10%

LARGE
3 15/16" X 5 1/2"

for temporary relief of mild to moderate pain

- Backache
- Sore Muscle
- Sprains
- Bruises



Salonpas® Pain Relief Patch

Menthol 3%
Methyl Salicylate 10%
Topical Analgesic

APPLY FOR 8-12 HOURS

FDA APPROVED NON-PRESCRIPTION PAIN RELIEVING PATCH
EFFECTIVENESS CONFIRMED IN CLINICAL TRIAL

9 LARGE PATCHES
3 15/16" X 5 1/2" (10cm X 14cm)

DO NOT USE MORE THAN ONE SALONPAS PATCH AT A TIME. SEE DIRECTIONS.

Package not child resistant.
Keep out of reach of children.

9 PATCHES
 Salonpas® Pain Relief Patch **LARGE**
 Menthol 3%, Methyl Salicylate 10%

LOT _____

EXP. _____

3M398T-0

Salonpas® Pain Relief Patch **LARGE** 9 PATCHES

Menthol 3%, Methyl Salicylate 10%

PRESS OPEN

minty scent

Drug Facts

Active ingredients (in each patch)	Purpose
Menthol 3%	Topical analgesic
Methyl salicylate 10% (NSAID: nonsteroidal anti-inflammatory drug)	Topical analgesic

Uses
Temporarily relieves mild to moderate aches & pains of muscles & joints associated with:
 ■ strains ■ sprains ■ simple backache ■ arthritis ■ bruises

Warnings
For external use only

Stomach bleeding warning: This product contains an NSAID, which may cause stomach bleeding. The chance is small but higher if you:
 ■ are age 60 or older ■ have had stomach ulcers or bleeding problems
 ■ take a blood thinning (anticoagulant) or steroid drug
 ■ take other drugs containing an NSAID [aspirin, ibuprofen, naproxen, or others]
 ■ have 3 or more alcoholic drinks every day while using this product
 ■ take more or for a longer time than directed

Do not use
 ■ on the face or rashes ■ on wounds or damaged skin ■ if allergic to aspirin or other NSAIDs
 ■ with a heating pad ■ when sweating (such as from exercise or heat)
 ■ any patch from a pouch that has been open for 14 or more days ■ right before or after heart surgery

Ask a doctor before use if
 ■ you are allergic to topical products ■ the stomach bleeding warning applies to you
 ■ you are taking a diuretic ■ you have high blood pressure, heart disease, or kidney disease

When using this product
 ■ wash hands after applying or removing patch. Avoid contact with eyes. If eye contact occurs, rinse thoroughly with water.
 ■ the risk of heart attack or stroke may increase if you use more than directed or for longer than directed

Stop use and ask a doctor if
 ■ stomach pain or upset gets worse or lasts
 ■ you feel faint, vomit blood, or have bloody or black stools. These are signs of stomach bleeding.
 ■ rash, itching or skin irritation develops ■ condition worsens ■ symptoms last for more than 3 days
 ■ symptoms clear up and occur again within a few days

If pregnant or breast-feeding, ask a health professional before use. It is especially important not to use methyl salicylate at 20 weeks or later in pregnancy unless definitely directed to do so by a doctor because it may cause problems in the unborn child or complications during delivery.

Keep out of reach of children. If put in mouth, get medical help or contact a Poison Control Center right away. Package not child resistant. Dispose of the used patches after folding sticky ends together.

Directions
Adults 18 years and older:
 ■ clean and dry affected area ■ only use one patch at a time
 ■ apply one patch to the affected area and leave in place for up to 8 to 12 hours
 ■ if pain lasts after using the first patch, a second patch may be applied for up to another 8 to 12 hours
 ■ do not use more than 2 patches per day ■ do not use for more than 3 days in a row
 ■ the used patch should be removed from the skin when a new one is applied

Children under 18 years of age: do not use; this product has not been shown to work in children

Other information
 ■ Store at 20-25°C (68-77°F) ■ Avoid storing product in direct sunlight
 ■ Protect product from excessive moisture
 ■ Some individuals may not experience pain relief until several hours after applying the patch

Inactive ingredients
 alicyclic saturated hydrocarbon resin, backing cloth, film, mineral oil, polyisobutylene, polyisobutylene 1,200,000, styrene-isoprene-styrene block copolymer, synthetic aluminum silicate

Questions or comments?
 Toll free 1-87-SALONPAS | www.salonpas.us

LOT _____

EXP. _____

3M398T-0

23.FS68_sample_sachet_1s

18.SARP original 1ct pouch free sample_210518

Labeling Format Information:		
Fonts : Helvetica Condensed Black Oblique Helvetica Condensed Bold Helvetica Narrow		
Drug Facts :	9.5pt	Leading : 6.15pt
Header :	8pt	Bullets : 6pt
Subheader :	6pt	Barlines : 2.5pt
Body Text :	6pt	Hairlines : 0.5pt
Drug Facts (Continued) NA		
Horizontal Scale: 80%-100% Average Kerning: 0		

✂ CUT OPEN HERE ----- CUT OPEN HERE ✂

minty scent

Drug Facts

Active ingredients (in each patch)	Purpose
Menthol 3%	Topical analgesic
Methyl salicylate 10% (NSAID: nonsteroidal anti-inflammatory drug)	Topical analgesic

Uses Temporarily relieves mild to moderate aches & pains of muscles & joints associated with:

- arthritis
- sprains
- strains
- bruises
- simple backache

Warnings
For external use only
Stomach bleeding warning: This product contains an NSAID, which may cause stomach bleeding. The chance is small but higher if you:

- are age 60 or older
- have had stomach ulcers or bleeding problems
- take a blood thinning (anticoagulant) or steroid drug
- take other drugs containing an NSAID (aspirin, ibuprofen, naproxen, or others)
- have 3 or more alcoholic drinks every day while using this product
- take more or for a longer time than directed

Do not use

- on the face or rashes
- on wounds or damaged skin
- if allergic to aspirin or other NSAIDs
- with a heating pad
- when sweating (such as from exercise or heat)
- any patch from a pouch that has been open for 14 or more days
- right before or after heart surgery

Ask a doctor before use if

- you are allergic to topical products
- the stomach bleeding warning applies to you
- you are taking a diuretic
- you have high blood pressure, heart disease, or kidney disease

When using this product

- wash hands after applying or removing patch. Avoid contact with eyes.
- If eye contact occurs, rinse thoroughly with water.
- the risk of heart attack or stroke may increase if you use more than directed or for longer than directed

Stop use and ask a doctor if

- stomach pain or upset gets worse or lasts
- you feel faint, vomit blood, or have bloody or black stools. These are signs of stomach bleeding.
- rash, itching or skin irritation develops
- condition worsens
- symptoms last for more than 3 days
- symptoms clear up and occur again within a few days

If pregnant or breast-feeding, ask a health professional before use. It is especially important not to use methyl salicylate at 20 weeks or later in pregnancy unless definitely directed to do so by a doctor because it may cause problems in the unborn child or complications during delivery.

Keep out of reach of children. If put in mouth, get medical help or contact a Poison Control Center right away. Package not child resistant. Dispose of the used patches after folding sticky ends together.

Directions

Adults 18 years and older:

- only use one patch at a time
- clean and dry affected area
- remove patch from backing film and apply to skin (see illustration)
- apply one patch to the affected area and leave in place for up to 8 to 12 hours
- if pain lasts after using the first patch, a second patch may be applied for up to another 8 to 12 hours
- do not use more than 2 patches per day
- do not use for more than 3 days in a row
- the used patch should be removed from the skin when a new one is applied

Children under 18 years of age: do not use; this product has not been shown to work in children

Other information

- Store at 20-25°C (68-77°F)
- Avoid storing product in direct sunlight
- Protect product from excessive moisture
- Some individuals may not experience pain relief until several hours after applying the patch

Inactive ingredients
 alicyclic saturated hydrocarbon resin, backing cloth, film, mineral oil, polyisobutylene, polyisobutylene 1,200,000, styrene-isoprene-styrene block copolymer, synthetic aluminum silicate

Questions or comments?
 Toll free 1-87-SALONPAS www.salonpas.us

LOT: _____
 EXP: _____

®Registered Trade Mark XXXXXX-X

18.FS68_sachet_1s

Labeling Format Information:		
Fonts : Helvetica Condensed Black Oblique Helvetica Condensed Bold Helvetica Narrow		
Drug Facts :	9.5pt	Leading : 6.15pt
Header :	8pt	Bullets : 6pt
Subheader :	6pt	Barlines : 2.5pt
Body Text :	6pt	Hairlines : 0.5pt
Drug Facts (Continued) NA		
Horizontal Scale: 80%-100% Average Kerning: 0		

19.SARP original 1ct pouch commercial_210518



Hisamitsu®
 NDC#46581-880-01

for temporary relief of mild to moderate pain

- Arthritis
- Joint Pain
- Sprains
- Strains

Salonpas®
Arthritis Pain Patch

Menthol 3%
Methyl Salicylate 10%
Topical Analgesic

APPLY FOR 8-12 HOURS

FDA APPROVED NON-PRESCRIPTION PAIN RELIEVING PATCH
EFFECTIVENESS CONFIRMED IN CLINICAL TRIAL

1 PATCH
 2 3/4" x 3 15/16" (7cm x 10cm)

DO NOT USE MORE THAN ONE SALONPAS PATCH AT A TIME. SEE DIRECTIONS.

Package not child resistant. Keep out of reach of children.

Manufactured by Hisamitsu Pharmaceutical Co., Inc. JAPAN SAGA TOSU MADE IN JAPAN
 Distributed by Hisamitsu America, Inc. Florham Park, NJ 07932

3 46581 68001 0

CUT OPEN HERE ----- CUT OPEN HERE

minty scent

Drug Facts

Active ingredients (in each patch)	Purpose
Menthol 3%	Topical analgesic
Methyl salicylate 10% (NSAID: nonsteroidal anti-inflammatory drug)	Topical analgesic

Uses Temporarily relieves mild to moderate aches & pains of muscles & joints associated with:
 ■ arthritis ■ sprains ■ strains ■ bruises ■ simple backache

Warnings
For external use only
Stomach bleeding warning: This product contains an NSAID, which may cause stomach bleeding. The chance is small but higher if you:
 ■ are age 60 or older
 ■ have had stomach ulcers or bleeding problems ■ take a blood thinning (anticoagulant) or steroid drug
 ■ take other drugs containing an NSAID (aspirin, ibuprofen, naproxen, or others)
 ■ have 3 or more alcoholic drinks every day while using this product
 ■ take more or for a longer time than directed

Do not use
 ■ on the face or rashes ■ on wounds or damaged skin ■ if allergic to aspirin or other NSAIDs
 ■ with a heating pad ■ when sweating (such as from exercise or heat)
 ■ any patch from a pouch that has been open for 14 or more days ■ right before or after heart surgery

Ask a doctor before use if ■ you are allergic to topical products ■ the stomach bleeding warning applies to you
 ■ you are taking a diuretic ■ you have high blood pressure, heart disease, or kidney disease

When using this product ■ wash hands after applying or removing patch. Avoid contact with eyes. If eye contact occurs, rinse thoroughly with water.
 ■ the risk of heart attack or stroke may increase if you use more than directed or for longer than directed

Stop use and ask a doctor if ■ stomach pain or upset gets worse or lasts
 ■ you feel faint, vomit blood, or have bloody or black stools. These are signs of stomach bleeding.
 ■ rash, itching or skin irritation develops ■ condition worsens ■ symptoms last for more than 3 days
 ■ symptoms clear up and occur again within a few days

If pregnant or breast-feeding, ask a health professional before use. It is especially important not to use methyl salicylate at 20 weeks or later in pregnancy unless definitely directed to do so by a doctor because it may cause problems in the unborn child or complications during delivery.
Keep out of reach of children. If put in mouth, get medical help or contact a Poison Control Center right away. Package not child resistant. Dispose of the used patches after folding sticky ends together.

Directions
Adults 18 years and older: ■ only use one patch at a time
 ■ clean and dry affected area ■ remove patch from backing film and apply to skin (see illustration)
 ■ apply one patch to the affected area and leave in place for up to 8 to 12 hours
 ■ if pain lasts after using the first patch, a second patch may be applied for up to another 8 to 12 hours
 ■ do not use more than 2 patches per day ■ do not use for more than 3 days in a row
 ■ the used patch should be removed from the skin when a new one is applied
Children under 18 years of age: do not use; this product has not been shown to work in children

Other information ■ Store at 20-25°C (68-77°F) ■ Avoid storing product in direct sunlight
 ■ Protect product from excessive moisture
 ■ Some individuals may not experience pain relief until several hours after applying the patch

Inactive ingredients
 alicyclic saturated hydrocarbon resin, backing cloth, film, mineral oil, polyisobutylene, polyisobutylene 1,200,000, styrene-isoprene-styrene block copolymer, synthetic aluminum silicate

Questions or comments?
 Toll free 1-87-SALONPAS www.salonpas.us

LOT
 EXP.

®Registered Trade Mark XXXXXX-X

20.FS68_sachet_3s

20.SARP original 3ct pouch commercial_210518

Labeling Format Information:			
Fonts : Helvetica Condensed Black Oblique Helvetica Condensed Bold Helvetica Narrow			
Drug Facts :	9.5pt	Leading :	6.15pt
Header :	8pt	Bullets :	6pt
Subheader :	6pt	Barlines :	2.5pt
Body Text :	6pt	Hairlines :	0.5pt
Drug Facts (Continued)	NA		
Horizontal Scale: 80%-100% Average Kerning: 0			

✂ CUT OPEN HERE ----- CUT OPEN HERE ✂

FOLD TWICE AFTER OPENING
Discard unused patches 14 days after opening
FOLD TWICE AFTER OPENING

NDC#46581-680-03 **Hisamitsu**

for temporary relief of mild to moderate pain

- Arthritis
- Joint Pain
- Sprains
- Strains

HOW TO APPLY



1 Peel the center film. 2 Place on affected area.
 3 Slide the film upward. 4 Slide the other film downward.

Salonpas
Arthritis Pain Patch

Menthol 3%
Methyl Salicylate 10%
Topical Analgesic

APPLY FOR **8-12 HOURS**

FDA APPROVED NON-PRESCRIPTION PAIN RELIEVING PATCH
EFFECTIVENESS CONFIRMED IN CLINICAL TRIAL

3 PATCHES
2 3/4" x 3 15/16" (7cm x 10cm)

DO NOT USE MORE THAN ONE SALONPAS PATCH AT A TIME. SEE DIRECTIONS.

Package not child resistant.
 Keep out of reach of children.

Manufactured by Hisamitsu Pharmaceutical Co., Inc. JAPAN SAGA TOSU MADE IN JAPAN
 Distributed by Hisamitsu America, Inc. Florham Park, NJ 07932

3 46581 68003 4

✂ CUT OPEN HERE ----- CUT OPEN HERE ✂

minty scent

Drug Facts

Active ingredients (in each patch)	Purpose
Menthol 3%	Topical analgesic
Methyl salicylate 10% (NSAID: nonsteroidal anti-inflammatory drug)	Topical analgesic

Uses Temporarily relieves mild to moderate aches & pains of muscles & joints associated with:

- arthritis
- sprains
- strains
- bruises
- simple backache

Warnings
For external use only

Stomach bleeding warning: This product contains an NSAID, which may cause stomach bleeding. The chance is small but higher if you:

- are age 60 or older
- have had stomach ulcers or bleeding problems
- take a blood thinning (anticoagulant) or steroid drug
- take other drugs containing an NSAID (aspirin, ibuprofen, naproxen, or others)
- have 3 or more alcoholic drinks every day while using this product
- take more or for a longer time than directed

Do not use

- on the face or rashes
- on wounds or damaged skin
- if allergic to aspirin or other NSAIDs
- with a heating pad
- when sweating (such as from exercise or heat)
- any patch from a pouch that has been open for 14 or more days
- right before or after heart surgery

Ask a doctor before use if

- you are allergic to topical products
- the stomach bleeding warning applies to you
- you are taking a diuretic
- you have high blood pressure, heart disease, or kidney disease

When using this product

- wash hands after applying or removing patch. Avoid contact with eyes.
- If eye contact occurs, rinse thoroughly with water.
- the risk of heart attack or stroke may increase if you use more than directed or for longer than directed

Stop use and ask a doctor if

- stomach pain or upset gets worse or lasts
- you feel faint, vomit blood, or have bloody or black stools. These are signs of stomach bleeding.
- rash, itching or skin irritation develops
- condition worsens
- symptoms last for more than 3 days
- symptoms clear up and occur again within a few days

If pregnant or breast-feeding, ask a health professional before use. It is especially important not to use methyl salicylate at 20 weeks or later in pregnancy unless definitely directed to do so by a doctor because it may cause problems in the unborn child or complications during delivery.

Keep out of reach of children. If put in mouth, get medical help or contact a Poison Control Center right away. Package not child resistant. Dispose of the used patches after folding sticky ends together.

Directions

Adults 18 years and older:

- only use one patch at a time
- clean and dry affected area
- remove patch from backing film and apply to skin (see illustration)
- apply one patch to the affected area and leave in place for up to 8 to 12 hours
- if pain lasts after using the first patch, a second patch may be applied for up to another 8 to 12 hours
- do not use more than 2 patches per day
- do not use for more than 3 days in a row
- the used patch should be removed from the skin when a new one is applied

Children under 18 years of age: do not use; this product has not been shown to work in children

Other information

- Store at 20-25°C (68-77°F)
- Avoid storing product in direct sunlight
- Protect product from excessive moisture
- Some individuals may not experience pain relief until several hours after applying the patch

Inactive ingredients
alicyclic saturated hydrocarbon resin, backing cloth, film, mineral oil, polyisobutylene, polyisobutylene 1,200,000, styrene-isoprene-styrene block copolymer, synthetic aluminum silicate

Questions or comments?
Toll free 1-87-SALONPAS www.salonpas.us

LOT: _____
EXP: _____

®Registered Trade Mark XXXXXX-X

06.FS68_sachet_5s

21.SARP original 5ct inner pouch_210518

Labeling Format Information:			
Fonts : Helvetica Condensed Black Oblique			
Helvetica Condensed Bold			
Helvetica Narrow			
Drug Facts :	9.5pt	Leading :	6.15pt
Header :	8pt	Bullets :	6pt
Subheader :	6pt	Barlines :	2.5pt
Body Text :	6pt	Hairlines :	0.5pt
Drug Facts (Continued)	NA		
Horizontal Scale: 80%-100% Average Kerning: 0			

✂ CUT OPEN HERE ----- CUT OPEN HERE ✂

FOLD TWICE AFTER OPENING

Discard unused patches 14 days after opening

FOLD TWICE AFTER OPENING

HOW TO APPLY



1
Peel the center film.



2
Place on affected area.



3
Slide the film upward.



4
Slide the other film downward.



Salonpas®
Arthritis Pain Patch

Menthol 3%
Methyl Salicylate 10%
Topical Analgesic

5 PATCHES
2 3/4" X 3 15/16" (7cm X 10cm)

✂ DO NOT USE MORE THAN ONE SALONPAS PATCH AT A TIME. SEE DIRECTIONS.

Package not child resistant.
Keep out of reach of children.

Hisamitsu®
Manufactured by
Hisamitsu Pharmaceutical Co., Inc.
JAPAN SAGA TOSU

Distributed by
Hisamitsu America, Inc.
Florham Park, NJ 07932

MADE IN JAPAN

LOT

EXP.

✂ CUT OPEN HERE ----- CUT OPEN HERE ✂

Salonpas® Arthritis Pain Patch Menthol 3%, Methyl Salicylate 10% minty scent

Drug Facts	Purpose
Active ingredients (in each patch)	
Menthol 3%.....	Topical analgesic
Methyl salicylate 10% (NSAID: nonsteroidal anti-inflammatory drug).....	Topical analgesic
Uses Temporarily relieves mild to moderate aches & pains of muscles & joints associated with: <ul style="list-style-type: none"> ■ arthritis ■ sprains ■ strains ■ bruises ■ simple backache 	
Warnings	
For external use only	
Stomach bleeding warning: This product contains an NSAID, which may cause stomach bleeding. The chance is small but higher if you: <ul style="list-style-type: none"> ■ are age 60 or older ■ have had stomach ulcers or bleeding problems ■ take a blood thinning (anticoagulant) or steroid drug ■ take other drugs containing an NSAID [aspirin, ibuprofen, naproxen, or others] ■ have 3 or more alcoholic drinks every day while using this product ■ take more or for a longer time than directed 	
Do not use <ul style="list-style-type: none"> ■ on the face or rashes ■ on wounds or damaged skin ■ if allergic to aspirin or other NSAIDs ■ with a heating pad ■ when sweating (such as from exercise or heat) ■ any patch from a pouch that has been open for 14 or more days ■ right before or after heart surgery 	
Ask a doctor before use if <ul style="list-style-type: none"> ■ you are allergic to topical products ■ the stomach bleeding warning applies to you ■ you are taking a diuretic ■ you have high blood pressure, heart disease, or kidney disease 	
When using this product ■ wash hands after applying or removing patch. Avoid contact with eyes. If eye contact occurs, rinse thoroughly with water. <ul style="list-style-type: none"> ■ the risk of heart attack or stroke may increase if you use more than directed or for longer than directed 	
Stop use and ask a doctor if <ul style="list-style-type: none"> ■ stomach pain or upset gets worse or lasts ■ you feel faint, vomit blood, or have bloody or black stools. These are signs of stomach bleeding. ■ rash, itching or skin irritation develops ■ condition worsens ■ symptoms last for more than 3 days ■ symptoms clear up and occur again within a few days 	
If pregnant or breast-feeding , ask a health professional before use. It is especially important not to use methyl salicylate at 20 weeks or later in pregnancy unless definitely directed to do so by a doctor because it may cause problems in the unborn child or complications during delivery.	
Keep out of reach of children. If put in mouth, get medical help or contact a Poison Control Center right away. Package not child resistant. Dispose of the used patches after folding sticky ends together.	
Directions	
Adults 18 years and older: <ul style="list-style-type: none"> ■ only use one patch at a time ■ clean and dry affected area ■ remove patch from backing film and apply to skin (see illustration) ■ apply one patch to the affected area and leave in place for up to 8 to 12 hours ■ if pain lasts after using the first patch, a second patch may be applied for up to another 8 to 12 hours ■ do not use more than 2 patches per day ■ do not use for more than 3 days in a row ■ the used patch should be removed from the skin when a new one is applied 	
Children under 18 years of age: do not use; this product has not been shown to work in children	
Other information <ul style="list-style-type: none"> ■ Store at 20-25°C (68-77°F) ■ Avoid storing product in direct sunlight ■ Protect product from excessive moisture ■ Some individuals may not experience pain relief until several hours after applying the patch 	
Inactive ingredients alicyclic saturated hydrocarbon resin, backing cloth, film, mineral oil, polyisobutylene, polyisobutylene 1,200,000, styrene-isoprene-styrene block copolymer, synthetic aluminum silicate	
Questions or comments? Toll free 1-87-SALONPAS www.salonpas.us ®Registered Trade Mark XXXXXX-X	

01.FS68_case_5s

22.SARP original 5ct box_210518

Labeling Format Information:			
Fonts : Helvetica Roman , Bold , Bold Oblique			
Drug Facts :	9.5pt	Leading :	6.5pt
Header :	8pt	Bullets :	5pt
Subheader :	6pt	Barlines :	2.5pt
Body Text :	6pt	Hairlines :	0.5pt
Horizontal Scale: 80%-100%		Average Kerning: 0	

5 Patches

Salonpas
Arthritis Pain Patch
Menthol 3%, Methyl Salicylate 10%

Manufactured by
Hisamitsu Pharmaceutical Co., Inc.
JAPAN SAGA TOSU
MADE IN JAPAN

Distributed by
Hisamitsu America, Inc.
Fortran Park, NJ 07932
®Registered Trade Mark

3 46581 168005 8

Salonpas[®] Arthritis Pain Patch 5

Menthol 3%, Methyl Salicylate 10% PATCHES



for temporary relief of mild to moderate pain

- Arthritis
- Joint Pain
- Sprains
- Strains

Salonpas[®] Arthritis Pain Patch

Menthol 3% Methyl Salicylate 10%

Salonpas[®] Arthritis Pain Patch

Menthol 3% Methyl Salicylate 10%

APPLY FOR 8-12 HOURS

Menthol 3% Methyl Salicylate 10% Topical Analgesic

FDA APPROVED NON-PRESCRIPTION PAIN RELIEVING PATCH
EFFECTIVENESS CONFIRMED IN CLINICAL TRIAL

5 PATCHES
2 3/4" x 3 15/16" (7cm x 10cm)

Package not child resistant.
Keep out of reach of children.

DO NOT USE MORE THAN ONE SALONPAS PATCH AT A TIME. SEE DIRECTIONS.

LOT: _____
EXP: _____

Salonpas[®] Arthritis Pain Patch
Menthol 3%, Methyl Salicylate 10% **5 PATCHES**

5 Patches

Salonpas[®] Arthritis Pain Patch
Menthol 3%, Methyl Salicylate 10%

HOW TO APPLY

- Peel the center film.
- Place on affected area.
- Slide the film upward.
- Slide the other film downward.

Salonpas[®] Arthritis Pain Patch
Menthol 3%, Methyl Salicylate 10%

minty scent

Drug Facts

Active ingredients (in each patch)	Purpose
Menthol 3%	Topical analgesic
Methyl salicylate 10% (NSAID: nonsteroidal anti-inflammatory drug)	Topical analgesic

Uses
Temporarily relieves mild to moderate aches & pains of muscles & joints associated with:
■ arthritis ■ sprains ■ strains ■ bruises ■ simple backache

Warnings
For external use only
Stomach bleeding warning: This product contains an NSAID, which may cause stomach bleeding. The chance is small but higher if you:
■ are age 60 or older ■ have had stomach ulcers or bleeding problems
■ take a blood thinning (anticoagulant) or steroid drug
■ take other drugs containing an NSAID [aspirin, ibuprofen, naproxen, or others]
■ have 3 or more alcoholic drinks every day while using this product
■ take more or for a longer time than directed

Do not use
■ on the face or rashes ■ on wounds or damaged skin ■ if allergic to aspirin or other NSAIDs
■ with a heating pad ■ when sweating (such as from exercise or heat)
■ any patch from a pouch that has been open for 14 or more days ■ right before or after heart surgery

Ask a doctor before use if
■ you are allergic to topical products ■ the stomach bleeding warning applies to you
■ you are taking a diuretic ■ you have high blood pressure, heart disease, or kidney disease

When using this product
■ wash hands after applying or removing patch. Avoid contact with eyes. If eye contact occurs, rinse thoroughly with water.
■ the risk of heart attack or stroke may increase if you use more than directed or for longer than directed

Stop use and ask a doctor if
■ stomach pain or upset gets worse or lasts
■ you feel faint, vomit blood, or have bloody or black stools. These are signs of stomach bleeding.
■ rash, itching or skin irritation develops ■ condition worsens ■ symptoms last for more than 3 days
■ symptoms clear up and occur again within a few days

If pregnant or breast-feeding, ask a health professional before use. It is especially important not to use methyl salicylate at 20 weeks or later in pregnancy unless definitely directed to do so by a doctor because it may cause problems in the unborn child or complications during delivery.
Keep out of reach of children. If put in mouth, get medical help or contact a Poison Control Center right away. Package not child resistant. Dispose of the used patches after folding sticky ends together.

Directions
Adults 18 years and older:
■ clean and dry affected area ■ only use one patch at a time
■ apply one patch to the affected area and leave in place for up to 8 to 12 hours
■ if pain lasts after using the first patch, a second patch may be applied for up to another 8 to 12 hours
■ do not use more than 2 patches per day ■ do not use for more than 3 days in a row
■ the used patch should be removed from the skin when a new one is applied
Children under 18 years of age: do not use; this product has not been shown to work in children

Other information
■ Store at 20-25°C (68-77°F) ■ Avoid storing product in direct sunlight
■ Protect product from excessive moisture
■ Some individuals may not experience pain relief until several hours after applying the patch

Inactive ingredients
alicyclic saturated hydrocarbon resin, backing cloth, film, mineral oil, polyisobutylene, polyisobutylene 1,200,000, styrene-isoprene-styrene block copolymer, synthetic aluminum silicate

Questions or comments?
Toll free 1-87-SALONPAS www.salonpas.us

19.FS68_sachet_L1s

Labeling Format Information:		
Fonts : Helvetica Condensed Black Oblique Helvetica Condensed Bold Helvetica Narrow		
Drug Facts :	9.5pt	Leading : 6.15pt
Header :	8pt	Bullets : 6pt
Subheader :	6pt	Barlines : 2.5pt
Body Text :	6pt	Hairlines : 0.5pt
Drug Facts (Continued) NA		
Horizontal Scale: 80%-100% Average Kerning: 0		

27.SARP large 1ct pouch commercial_210518

LARGE Hisamitsu®
 NDC#46581-685-01

for temporary relief of mild to moderate pain

Arthritis
 Joint Pain
 Sprains
 Strains

Salonpas®
Arthritis Pain Patch

Menthol 3%
 Methyl Salicylate 10%
 Topical Analgesic

APPLY FOR 8-12 HOURS

FDA APPROVED NON-PRESCRIPTION PAIN RELIEVING PATCH
 EFFECTIVENESS CONFIRMED IN CLINICAL TRIAL

1 LARGE PATCH
 3 15/16" x 5 1/2" (10cm x 14cm)

Package not child resistant.
 Keep out of reach of children.

DO NOT USE MORE THAN ONE SALONPAS PATCH AT A TIME. SEE DIRECTIONS.

Manufactured by Hisamitsu Pharmaceutical Co., Inc. JAPAN SAGA TOSU MADE IN JAPAN
 Distributed by Hisamitsu America, Inc. Florham Park, NJ 07932

3 46581 68501 5

CUT OPEN HERE ----- CUT OPEN HERE

minty scent

Drug Facts

Active ingredients (in each patch)	Purpose
Menthol 3%	Topical analgesic
Methyl salicylate 10% (NSAID: nonsteroidal anti-inflammatory drug)	Topical analgesic

Uses Temporarily relieves mild to moderate aches & pains of muscles & joints associated with:
 ■ arthritis ■ sprains ■ strains ■ bruises ■ simple backache

Warnings
 For external use only
Stomach bleeding warning: This product contains an NSAID, which may cause stomach bleeding. The chance is small but higher if you:
 ■ are age 60 or older
 ■ have had stomach ulcers or bleeding problems ■ take a blood thinning (anticoagulant) or steroid drug
 ■ take other drugs containing an NSAID (aspirin, ibuprofen, naproxen, or others)
 ■ have 3 or more alcoholic drinks every day while using this product
 ■ take more or for a longer time than directed

Do not use
 ■ on the face or rashes ■ on wounds or damaged skin ■ if allergic to aspirin or other NSAIDs
 ■ with a heating pad ■ when sweating (such as from exercise or heat)
 ■ any patch from a pouch that has been open for 14 or more days ■ right before or after heart surgery

Ask a doctor before use if
 ■ you are allergic to topical products ■ the stomach bleeding warning applies to you
 ■ you are taking a diuretic ■ you have high blood pressure, heart disease, or kidney disease

When using this product ■ wash hands after applying or removing patch. Avoid contact with eyes. If eye contact occurs, rinse thoroughly with water.
 ■ the risk of heart attack or stroke may increase if you use more than directed or for longer than directed

Stop use and ask a doctor if
 ■ stomach pain or upset gets worse or lasts
 ■ you feel faint, vomit blood, or have bloody or black stools. These are signs of stomach bleeding.
 ■ rash, itching or skin irritation develops ■ condition worsens ■ symptoms last for more than 3 days
 ■ symptoms clear up and occur again within a few days

If pregnant or breast-feeding, ask a health professional before use. It is especially important not to use methyl salicylate at 20 weeks or later in pregnancy unless definitely directed to do so by a doctor because it may cause problems in the unborn child or complications during delivery.
Keep out of reach of children. If put in mouth, get medical help or contact a Poison Control Center right away. Package not child resistant. Dispose of the used patches after folding sticky ends together.

Directions
Adults 18 years and older:
 ■ only use one patch at a time
 ■ clean and dry affected area ■ remove patch from backing film and apply to skin (see illustration)
 ■ apply one patch to the affected area and leave in place for up to 8 to 12 hours
 ■ if pain lasts after using the first patch, a second patch may be applied for up to another 8 to 12 hours
 ■ do not use more than 2 patches per day ■ do not use for more than 3 days in a row
 ■ the used patch should be removed from the skin when a new one is applied
Children under 18 years of age: do not use; this product has not been shown to work in children

Other information ■ Store at 20-25°C (68-77°F) ■ Avoid storing product in direct sunlight
 ■ Protect product from excessive moisture
 ■ Some individuals may not experience pain relief until several hours after applying the patch

Inactive ingredients
 alicyclic saturated hydrocarbon resin, backing cloth, film, mineral oil, polyisobutylene, polyisobutylene 1,200,000, styrene-isoprene-styrene block copolymer, synthetic aluminum silicate

Questions or comments?
 Toll free 1-87-SALONPAS www.salonpas.us

LOT
 EXP.

®Registered Trade Mark XXXXXX-X

24.FS68_sample_sachet_L1s

Labeling Format Information:		
Fonts : Helvetica Condensed Black Oblique Helvetica Condensed Bold Helvetica Narrow		
Drug Facts :	9.5pt	Leading : 6.15pt
Header :	8pt	Bullets : 6pt
Subheader :	6pt	Barlines : 2.5pt
Body Text :	6pt	Hairlines : 0.5pt
Drug Facts (Continued) NA		
Horizontal Scale: 80%-100% Average Kerning: 0		

26.SARP large 1ct pouch free sample_210518

LARGE Hisamitsu®
NDC#46581-885-99

for temporary relief of mild to moderate pain

Arthritis
Joint Pain
Sprains
Strains

HOW TO APPLY

- 1 Peel the center film.
- 2 Place on affected area.
- 3 Slide the film upward.
- 4 Slide the other film downward.

Salonpas®
Arthritis Pain Patch

Menthol 3%
Methyl Salicylate 10%
Topical Analgesic

APPLY FOR 8-12 HOURS

FDA APPROVED NON-PRESCRIPTION PAIN RELIEVING PATCH
EFFECTIVENESS CONFIRMED IN CLINICAL TRIAL

1 LARGE PATCH
3 15/16" x 5 1/2" (10cm x 14cm)

Package not child resistant.
Keep out of reach of children.

Manufactured by Hisamitsu Pharmaceutical Co., Inc. JAPAN SAGA TOSU MADE IN JAPAN
Distributed by Hisamitsu America, Inc. Florham Park, NJ 07932

FREE SAMPLE NOT FOR RE-SALE

CUT OPEN HERE ----- CUT OPEN HERE

minty scent

Drug Facts

Active ingredients (in each patch)	Purpose
Menthol 3%	Topical analgesic
Methyl salicylate 10% (NSAID: nonsteroidal anti-inflammatory drug)	Topical analgesic

Uses Temporarily relieves mild to moderate aches & pains of muscles & joints associated with:
 ■ arthritis ■ sprains ■ strains ■ bruises ■ simple backache

Warnings
For external use only
Stomach bleeding warning: This product contains an NSAID, which may cause stomach bleeding. The chance is small but higher if you:
 ■ are age 60 or older
 ■ have had stomach ulcers or bleeding problems ■ take a blood thinning (anticoagulant) or steroid drug
 ■ take other drugs containing an NSAID (aspirin, ibuprofen, naproxen, or others)
 ■ have 3 or more alcoholic drinks every day while using this product
 ■ take more or for a longer time than directed

Do not use
 ■ on the face or rashes ■ on wounds or damaged skin ■ if allergic to aspirin or other NSAIDs
 ■ with a heating pad ■ when sweating (such as from exercise or heat)
 ■ any patch from a pouch that has been open for 14 or more days ■ right before or after heart surgery

Ask a doctor before use if
 ■ you are allergic to topical products ■ the stomach bleeding warning applies to you
 ■ you are taking a diuretic ■ you have high blood pressure, heart disease, or kidney disease

When using this product ■ wash hands after applying or removing patch. Avoid contact with eyes. If eye contact occurs, rinse thoroughly with water.
 ■ the risk of heart attack or stroke may increase if you use more than directed or for longer than directed

Stop use and ask a doctor if
 ■ stomach pain or upset gets worse or lasts
 ■ you feel faint, vomit blood, or have bloody or black stools. These are signs of stomach bleeding.
 ■ rash, itching or skin irritation develops ■ condition worsens ■ symptoms last for more than 3 days
 ■ symptoms clear up and occur again within a few days

If pregnant or breast-feeding, ask a health professional before use. It is especially important not to use methyl salicylate at 20 weeks or later in pregnancy unless definitely directed to do so by a doctor because it may cause problems in the unborn child or complications during delivery.
Keep out of reach of children. If put in mouth, get medical help or contact a Poison Control Center right away. Package not child resistant. Dispose of the used patches after folding sticky ends together.

Directions
Adults 18 years and older:
 ■ only use one patch at a time
 ■ clean and dry affected area ■ remove patch from backing film and apply to skin (see illustration)
 ■ apply one patch to the affected area and leave in place for up to 8 to 12 hours
 ■ if pain lasts after using the first patch, a second patch may be applied for up to another 8 to 12 hours
 ■ do not use more than 2 patches per day ■ do not use for more than 3 days in a row
 ■ the used patch should be removed from the skin when a new one is applied
Children under 18 years of age: do not use; this product has not been shown to work in children

Other information ■ Store at 20-25°C (68-77°F) ■ Avoid storing product in direct sunlight
 ■ Protect product from excessive moisture
 ■ Some individuals may not experience pain relief until several hours after applying the patch

Inactive ingredients
 alicyclic saturated hydrocarbon resin, backing cloth, film, mineral oil, polyisobutylene, polyisobutylene 1,200,000, styrene-isoprene-styrene block copolymer, synthetic aluminum silicate

Questions or comments?
 Toll free 1-87-SALONPAS www.salonpas.us

LOT: _____
 EXP: _____

®Registered Trade Mark XXXXXX-X

07.FS68_sachet_L2s

28.SARP large 2ct inner pouch_210518

Labeling Format Information:			
Fonts : Helvetica Condensed Black Oblique			
Helvetica Condensed Bold			
Helvetica Narrow			
Drug Facts :	9.5pt	Leading :	6.15pt
Header :	8pt	Bullets :	6pt
Subheader :	6pt	Barlines :	2.5pt
Body Text :	6pt	Hairlines :	0.5pt
Drug Facts (Continued)	NA		
Horizontal Scale: 80%-100% Average Kerning: 0			

✂ CUT OPEN HERE ----- CUT OPEN HERE ✂

FOLD TWICE AFTER OPENING

Discard unused patches 14 days after opening

FOLD TWICE AFTER OPENING

HOW TO APPLY



1
Peel the center film.



2
Place on affected area.



3
Slide the film upward.



4
Slide the other film downward.



Salonpas®
Arthritis Pain Patch

Menthol 3%
Methyl Salicylate 10%
Topical Analgesic

2 LARGE PATCHES
 3 15/16" X 5 1/2" (10cm X 14cm)

✂ **DO NOT USE MORE THAN ONE SALONPAS PATCH AT A TIME. SEE DIRECTIONS.**

Package not child resistant.
Keep out of reach of children.

Hisamitsu®
 Manufactured by
Hisamitsu Pharmaceutical Co., Inc.
 JAPAN SAGA TOSU

Distributed by
Hisamitsu America, Inc.
 Florham Park, NJ 07932

MADE IN JAPAN

LOT

EXP.

✂ CUT OPEN HERE ----- CUT OPEN HERE ✂

Salonpas® Arthritis Pain Patch LARGE Menthol 3%, Methyl Salicylate 10% minty scent

Drug Facts	Purpose
Active ingredients (in each patch)	
Menthol 3%.....	Topical analgesic
Methyl salicylate 10% (NSAID: nonsteroidal anti-inflammatory drug).....	Topical analgesic
Uses Temporarily relieves mild to moderate aches & pains of muscles & joints associated with: ■ arthritis ■ sprains ■ strains ■ bruises ■ simple backache	
Warnings	
For external use only	
Stomach bleeding warning: This product contains an NSAID, which may cause stomach bleeding. The chance is small but higher if you: ■ are age 60 or older ■ have had stomach ulcers or bleeding problems ■ take a blood thinning (anticoagulant) or steroid drug ■ take other drugs containing an NSAID [aspirin, ibuprofen, naproxen, or others] ■ have 3 or more alcoholic drinks every day while using this product ■ take more or for a longer time than directed	
Do not use ■ on the face or rashes ■ on wounds or damaged skin ■ if allergic to aspirin or other NSAIDs ■ with a heating pad ■ when sweating (such as from exercise or heat) ■ any patch from a pouch that has been open for 14 or more days ■ right before or after heart surgery	
Ask a doctor before use if ■ you are allergic to topical products ■ the stomach bleeding warning applies to you ■ you are taking a diuretic ■ you have high blood pressure, heart disease, or kidney disease	
When using this product ■ wash hands after applying or removing patch. Avoid contact with eyes. If eye contact occurs, rinse thoroughly with water. ■ the risk of heart attack or stroke may increase if you use more than directed or for longer than directed	
Stop use and ask a doctor if ■ stomach pain or upset gets worse or lasts ■ you feel faint, vomit blood, or have bloody or black stools. These are signs of stomach bleeding. ■ rash, itching or skin irritation develops ■ condition worsens ■ symptoms last for more than 3 days ■ symptoms clear up and occur again within a few days	
If pregnant or breast-feeding , ask a health professional before use. It is especially important not to use methyl salicylate at 20 weeks or later in pregnancy unless definitely directed to do so by a doctor because it may cause problems in the unborn child or complications during delivery.	
Keep out of reach of children. If put in mouth, get medical help or contact a Poison Control Center right away. Package not child resistant. Dispose of the used patches after folding sticky ends together.	
Directions	
Adults 18 years and older: ■ only use one patch at a time ■ clean and dry affected area ■ remove patch from backing film and apply to skin (see illustration) ■ apply one patch to the affected area and leave in place for up to 8 to 12 hours ■ if pain lasts after using the first patch, a second patch may be applied for up to another 8 to 12 hours ■ do not use more than 2 patches per day ■ do not use for more than 3 days in a row ■ the used patch should be removed from the skin when a new one is applied	
Children under 18 years of age: do not use; this product has not been shown to work in children	
Other information ■ Store at 20-25°C (68-77°F) ■ Avoid storing product in direct sunlight ■ Protect product from excessive moisture ■ Some individuals may not experience pain relief until several hours after applying the patch	
Inactive ingredients alicyclic saturated hydrocarbon resin, backing cloth, film, mineral oil, polyisobutylene, polyisobutylene 1,200,000, styrene-isoprene-styrene block copolymer, synthetic aluminum silicate	
Questions or comments? Toll free 1-87-SALONPAS www.salonpas.us ®Registered Trade Mark XXXXXX-X	

31.FS68_case_L2s

30.SARP large 2ct box_210518

Labeling Format Information:			
Fonts : Helvetica Roman , Bold , Bold Oblique			
Drug Facts :	9.5pt	Leading :	6.5pt
Header :	8pt	Bullets :	5pt
Subheader :	6pt	Barlines :	2.5pt
Body Text :	6pt	Hairlines :	0.5pt
Horizontal Scale: 80%-100%		Average Kerning: 0	

2
PATCHES

Manufactured by
Hisamitsu Pharmaceutical Co., Inc.
JAPAN SAGA TOSU
MADE IN JAPAN

Distributed by
Hisamitsu America, Inc.
Florham Park, NJ 07932
®Registered Trade Mark

Salonpas[®] Arthritis Pain Patch **LARGE** 2 PATCHES

Menthol 3%, Methyl Salicylate 10%

LARGE



NDC#46581-685-02

for temporary relief of mild to moderate pain

- Arthritis
- Joint Pain
- Sprains
- Strains

Salonpas[®] Arthritis Pain Patch

Menthol 3%
Methyl Salicylate 10%
Topical Analgesic

APPLY FOR
8-12
HOURS

FDA APPROVED NON-PRESCRIPTION PAIN RELIEVING PATCH

EFFECTIVENESS CONFIRMED IN CLINICAL TRIAL

2 LARGE PATCHES

3 15/16" x 5 1/2" (10cm x 14cm)

Package not child resistant.
Keep out of reach of children.

DO NOT USE MORE THAN ONE SALONPAS PATCH AT A TIME. SEE DIRECTIONS.

2
PATCHES

Salonpas[®] Arthritis Pain Patch **LARGE**
Menthol 3%, Methyl Salicylate 10%

PRESS OPEN

minty scent

Drug Facts

Active ingredients (in each patch)	Purpose
Menthol 3%	Topical analgesic
Methyl salicylate 10% (NSAID: nonsteroidal anti-inflammatory drug)	Topical analgesic

Uses
Temporarily relieves mild to moderate aches & pains of muscles & joints associated with:
 ■ arthritis ■ sprains ■ strains ■ bruises ■ simple backache

Warnings
For external use only
Stomach bleeding warning: This product contains an NSAID, which may cause stomach bleeding. The chance is small but higher if you:
 ■ are age 60 or older ■ have had stomach ulcers or bleeding problems
 ■ take a blood thinning (anticoagulant) or steroid drug
 ■ take other drugs containing an NSAID [aspirin, ibuprofen, naproxen, or others]
 ■ have 3 or more alcoholic drinks every day while using this product
 ■ take more or for a longer time than directed

Do not use
 ■ on the face or rashes ■ on wounds or damaged skin ■ if allergic to aspirin or other NSAIDs
 ■ with a heating pad ■ when sweating (such as from exercise or heat)
 ■ any patch from a pouch that has been open for 14 or more days ■ right before or after heart surgery

Ask a doctor before use if
 ■ you are allergic to topical products ■ the stomach bleeding warning applies to you
 ■ you are taking a diuretic ■ you have high blood pressure, heart disease, or kidney disease

When using this product
 ■ wash hands after applying or removing patch. Avoid contact with eyes. If eye contact occurs, rinse thoroughly with water.
 ■ the risk of heart attack or stroke may increase if you use more than directed or for longer than directed

Stop use and ask a doctor if
 ■ stomach pain or upset gets worse or lasts
 ■ you feel faint, vomit blood, or have bloody or black stools. These are signs of stomach bleeding.
 ■ rash, itching or skin irritation develops ■ condition worsens ■ symptoms last for more than 3 days
 ■ symptoms clear up and occur again within a few days

If pregnant or breast-feeding, ask a health professional before use. It is especially important not to use methyl salicylate at 20 weeks or later in pregnancy unless definitely directed to do so by a doctor because it may cause problems in the unborn child or complications during delivery.
Keep out of reach of children. If put in mouth, get medical help or contact a Poison Control Center right away. Package not child resistant. Dispose of the used patches after folding sticky ends together.

Directions
Adults 18 years and older:
 ■ clean and dry affected area ■ only use one patch at a time
 ■ apply one patch to the affected area and leave in place for up to 8 to 12 hours
 ■ if pain lasts after using the first patch, a second patch may be applied for up to another 8 to 12 hours
 ■ do not use more than 2 patches per day ■ do not use for more than 3 days in a row
 ■ the used patch should be removed from the skin when a new one is applied
Children under 18 years of age: do not use; this product has not been shown to work in children

Other information
 ■ Store at 20-25°C (68-77°F) ■ Avoid storing product in direct sunlight
 ■ Protect product from excessive moisture
 ■ Some individuals may not experience pain relief until several hours after applying the patch

Inactive ingredients
 alicyclic saturated hydrocarbon resin, backing cloth, film, mineral oil, polyisobutylene, polyisobutylene 1,200,000, styrene-isoprene-styrene block copolymer, synthetic aluminum silicate

Questions or comments?
 Toll free 1-87-SALONPAS | www.salonpas.us

XXXXXX-X

LOT

EXP.

Salonpas[®] Arthritis Pain Patch **LARGE** 2 PATCHES

Menthol 3%, Methyl Salicylate 10%

08.FS68_sachet_L3s

29.SARP large 3ct inner pouch_210518

Labeling Format Information:			
Fonts : Helvetica Condensed Black Oblique			
Helvetica Condensed Bold			
Helvetica Narrow			
Drug Facts :	9.5pt	Leading :	6.15pt
Header :	8pt	Bullets :	6pt
Subheader :	6pt	Barlines :	2.5pt
Body Text :	6pt	Hairlines :	0.5pt
Drug Facts (Continued)	NA		
Horizontal Scale: 80%-100% Average Kerning: 0			

✂ CUT OPEN HERE ----- CUT OPEN HERE ✂

FOLD TWICE AFTER OPENING

Discard unused patches 14 days after opening

FOLD TWICE AFTER OPENING

HOW TO APPLY



1 Peel the center film.



2 Place on affected area.



3 Slide the film upward.



4 Slide the other film downward.



Salonpas®
Arthritis Pain Patch

Menthol 3%
Methyl Salicylate 10%
Topical Analgesic

3 LARGE PATCHES
3 15/16" X 5 1/2" (10cm X 14cm)

✂ **DO NOT USE MORE THAN ONE SALONPAS PATCH AT A TIME. SEE DIRECTIONS.**

Package not child resistant.
Keep out of reach of children.

Hisamitsu®
Manufactured by
Hisamitsu Pharmaceutical Co., Inc.
JAPAN SAGA TOSU

Distributed by
Hisamitsu America, Inc.
Florham Park, NJ 07932

MADE IN JAPAN

LOT

EXP.

✂ CUT OPEN HERE ----- CUT OPEN HERE ✂

Salonpas® Arthritis Pain Patch LARGE Menthol 3%, Methyl Salicylate 10% minty scent

Drug Facts	Purpose
Active ingredients (in each patch)	
Menthol 3%.....	Topical analgesic
Methyl salicylate 10% (NSAID: nonsteroidal anti-inflammatory drug).....	Topical analgesic
Uses Temporarily relieves mild to moderate aches & pains of muscles & joints associated with: <ul style="list-style-type: none"> ■ arthritis ■ sprains ■ strains ■ bruises ■ simple backache 	
Warnings	
For external use only	
Stomach bleeding warning: This product contains an NSAID, which may cause stomach bleeding. The chance is small but higher if you: <ul style="list-style-type: none"> ■ are age 60 or older ■ have had stomach ulcers or bleeding problems ■ take a blood thinning (anticoagulant) or steroid drug ■ take other drugs containing an NSAID [aspirin, ibuprofen, naproxen, or others] ■ have 3 or more alcoholic drinks every day while using this product ■ take more or for a longer time than directed 	
Do not use <ul style="list-style-type: none"> ■ on the face or rashes ■ on wounds or damaged skin ■ if allergic to aspirin or other NSAIDs ■ with a heating pad ■ when sweating (such as from exercise or heat) ■ any patch from a pouch that has been open for 14 or more days ■ right before or after heart surgery 	
Ask a doctor before use if <ul style="list-style-type: none"> ■ you are allergic to topical products ■ the stomach bleeding warning applies to you ■ you are taking a diuretic ■ you have high blood pressure, heart disease, or kidney disease 	
When using this product ■ wash hands after applying or removing patch. Avoid contact with eyes. If eye contact occurs, rinse thoroughly with water. <ul style="list-style-type: none"> ■ the risk of heart attack or stroke may increase if you use more than directed or for longer than directed 	
Stop use and ask a doctor if <ul style="list-style-type: none"> ■ stomach pain or upset gets worse or lasts ■ you feel faint, vomit blood, or have bloody or black stools. These are signs of stomach bleeding. ■ rash, itching or skin irritation develops ■ condition worsens ■ symptoms last for more than 3 days ■ symptoms clear up and occur again within a few days 	
If pregnant or breast-feeding , ask a health professional before use. It is especially important not to use methyl salicylate at 20 weeks or later in pregnancy unless definitely directed to do so by a doctor because it may cause problems in the unborn child or complications during delivery.	
Keep out of reach of children. If put in mouth, get medical help or contact a Poison Control Center right away. Package not child resistant. Dispose of the used patches after folding sticky ends together.	
Directions	
Adults 18 years and older: <ul style="list-style-type: none"> ■ only use one patch at a time ■ clean and dry affected area ■ remove patch from backing film and apply to skin (see illustration) ■ apply one patch to the affected area and leave in place for up to 8 to 12 hours ■ if pain lasts after using the first patch, a second patch may be applied for up to another 8 to 12 hours ■ do not use more than 2 patches per day ■ do not use for more than 3 days in a row ■ the used patch should be removed from the skin when a new one is applied 	
Children under 18 years of age: do not use; this product has not been shown to work in children	
Other information <ul style="list-style-type: none"> ■ Store at 20-25°C (68-77°F) ■ Avoid storing product in direct sunlight ■ Protect product from excessive moisture ■ Some individuals may not experience pain relief until several hours after applying the patch 	
Inactive ingredients alicyclic saturated hydrocarbon resin, backing cloth, film, mineral oil, polyisobutylene, polyisobutylene 1,200,000, styrene-isoprene-styrene block copolymer, synthetic aluminum silicate	
Questions or comments? Toll free 1-87-SALONPAS www.salonpas.us ®Registered Trade Mark XXXXXX-X	

32.FS68_case_L3s

31.SARP large 3ct box_210518

Labeling Format Information:			
Fonts : Helvetica Roman , Bold , Bold Oblique			
Drug Facts :	9.5pt	Leading :	6.5pt
Header :	8pt	Bullets :	5pt
Subheader :	6pt	Barlines :	2.5pt
Body Text :	6pt	Hairlines :	0.5pt
Horizontal Scale: 80%-100%		Average Kerning: 0	

3 PATCHES

Manufactured by
Hisamitsu Pharmaceutical Co., Inc.
JAPAN SAGA TOSU
MADE IN JAPAN

Distributed by
Hisamitsu America, Inc.
Florham Park, NJ 07932
®Registered Trade Mark

Salonpas[®] Arthritis Pain Patch **LARGE** 3 PATCHES

Menthol 3%, Methyl Salicylate 10%



LARGE **Hisamitsu**
NDC#46581-685-03

for temporary relief of mild to moderate pain

- Arthritis
- Joint Pain
- Sprains
- Strains

Salonpas[®] Arthritis Pain Patch

Menthol 3%
Methyl Salicylate 10%
Topical Analgesic

APPLY FOR 8-12 HOURS

FDA APPROVED NON-PRESCRIPTION PAIN RELIEVING PATCH
EFFECTIVENESS CONFIRMED IN CLINICAL TRIAL

3 LARGE PATCHES
3 15/16" x 5 1/2" (10cm x 14cm)

Package not child resistant.
Keep out of reach of children.

DO NOT USE MORE THAN ONE SALONPAS PATCH AT A TIME. SEE DIRECTIONS.

LOT: _____
EXP: _____

Salonpas[®] Arthritis Pain Patch **LARGE** 3 PATCHES
Menthol 3%, Methyl Salicylate 10%

3 PATCHES

Salonpas[®] Arthritis Pain Patch **LARGE**
Menthol 3%, Methyl Salicylate 10%

PRESS OPEN minty scent

Drug Facts

Active ingredients (in each patch)

Ingredient	Purpose
Menthol 3%	Topical analgesic
Methyl salicylate 10% (NSAID: nonsteroidal anti-inflammatory drug)	Topical analgesic

Uses
Temporarily relieves mild to moderate aches & pains of muscles & joints associated with:
 ■ arthritis ■ sprains ■ strains ■ bruises ■ simple backache

Warnings
For external use only

Stomach bleeding warning: This product contains an NSAID, which may cause stomach bleeding. The chance is small but higher if you:
 ■ are age 60 or older ■ have had stomach ulcers or bleeding problems
 ■ take a blood thinning (anticoagulant) or steroid drug
 ■ take other drugs containing an NSAID [aspirin, ibuprofen, naproxen, or others]
 ■ have 3 or more alcoholic drinks every day while using this product
 ■ take more or for a longer time than directed

Do not use
 ■ on the face or rashes ■ on wounds or damaged skin ■ if allergic to aspirin or other NSAIDs
 ■ with a heating pad ■ when sweating (such as from exercise or heat)
 ■ any patch from a pouch that has been open for 14 or more days ■ right before or after heart surgery

Ask a doctor before use if
 ■ you are allergic to topical products ■ the stomach bleeding warning applies to you
 ■ you are taking a diuretic ■ you have high blood pressure, heart disease, or kidney disease

When using this product
 ■ wash hands after applying or removing patch. Avoid contact with eyes. If eye contact occurs, rinse thoroughly with water.
 ■ the risk of heart attack or stroke may increase if you use more than directed or for longer than directed

Stop use and ask a doctor if
 ■ stomach pain or upset gets worse or lasts
 ■ you feel faint, vomit blood, or have bloody or black stools. These are signs of stomach bleeding.
 ■ rash, itching or skin irritation develops ■ condition worsens ■ symptoms last for more than 3 days
 ■ symptoms clear up and occur again within a few days

If pregnant or breast-feeding, ask a health professional before use. It is especially important not to use methyl salicylate at 20 weeks or later in pregnancy unless definitely directed to do so by a doctor because it may cause problems in the unborn child or complications during delivery.

Keep out of reach of children. If put in mouth, get medical help or contact a Poison Control Center right away. Package not child resistant. Dispose of the used patches after folding sticky ends together.

Directions

Adults 18 years and older:
 ■ clean and dry affected area ■ only use one patch at a time
 ■ apply one patch to the affected area and leave in place for up to 8 to 12 hours
 ■ if pain lasts after using the first patch, a second patch may be applied for up to another 8 to 12 hours
 ■ do not use more than 2 patches per day ■ do not use for more than 3 days in a row
 ■ the used patch should be removed from the skin when a new one is applied

Children under 18 years of age: do not use; this product has not been shown to work in children

Other information
 ■ Store at 20-25°C (68-77°F) ■ Avoid storing product in direct sunlight
 ■ Protect product from excessive moisture
 ■ Some individuals may not experience pain relief until several hours after applying the patch

Inactive ingredients
 alicyclic saturated hydrocarbon resin, backing cloth, film, mineral oil, polyisobutylene, polyisobutylene 1,200,000, styrene-isoprene-styrene block copolymer, synthetic aluminum silicate

Questions or comments?
 Toll free 1-87-SALONPAS | www.salonpas.us

XXXXXX-X

This is a representation of an electronic record that was signed electronically. Following this are manifestations of any and all electronic signatures for this electronic record.

/s/

VALERIE S PRATT
11/04/2021 02:22:21 PM