

## HIGHLIGHTS OF PRESCRIBING INFORMATION

These highlights do not include all the information needed to use LETAIRIS® tablets safely and effectively. See full prescribing information for LETAIRIS.

LETAIRIS (ambrisentan) tablets for oral use  
Initial U.S. Approval: 2007

### WARNING: POTENTIAL LIVER INJURY AND CONTRAINDICATION IN PREGNANCY

See full prescribing information for complete boxed warning.

LETAIRIS can be prescribed and dispensed only through a restricted distribution program (LETAIRIS Education and Access Program [LEAP]) because of these risks:

- Elevations of liver aminotransferases (ALT, AST) have been reported with LETAIRIS and serious liver injury has been reported with related drugs.
- Monitor liver aminotransferases monthly and discontinue LETAIRIS if  $>5 \times$  ULN or if elevations are accompanied by bilirubin  $>2 \times$  ULN or by signs or symptoms of liver dysfunction.
- May cause fetal harm if taken during pregnancy (4.1).
- Must exclude pregnancy before the start of treatment (2.2).
- Prevent pregnancy during treatment and for one month after stopping treatment by the use of two acceptable methods of contraception unless the patient has had a tubal sterilization or chooses to use a Copper T 380A IUD or LNG 20 IUS, in which case no additional contraception is needed (2.2, 5.6).

### RECENT MAJOR CHANGES

- Warnings and Precautions, Pulmonary Veno-occlusive Disease (5.5) 10/2010

### INDICATIONS AND USAGE

LETAIRIS is an endothelin receptor antagonist indicated for the treatment of pulmonary arterial hypertension (WHO Group 1) in patients with WHO Class II or III symptoms to improve exercise capacity and delay clinical worsening (1).

### DOSAGE AND ADMINISTRATION

- Initiate treatment at 5 mg once daily with or without food, and consider increasing the dose to 10 mg once daily if 5 mg is tolerated (2.1).

- Treat women of childbearing potential only after a negative pregnancy test and treat only women who are using two acceptable methods of contraception unless the patient has had a tubal sterilization or chooses to use a Copper T 380A IUD or LNG 20 IUS, in which case no additional contraception is needed. Obtain monthly pregnancy tests (2.2, 5.6).
- Not recommended in patients with moderate or severe hepatic impairment (2.3).

### DOSAGE FORMS AND STRENGTHS

- 5 mg and 10 mg film-coated, unscored tablets (3).

### CONTRAINDICATIONS

- Do not administer LETAIRIS to a pregnant woman because it can cause fetal harm (4.1).

### WARNINGS AND PRECAUTIONS

- Decreases in hemoglobin have been observed within the first few weeks; measure hemoglobin at initiation, at 1 month, and periodically thereafter (5.2).
- Fluid retention may require intervention (5.3).
- Decreases in sperm count have been observed in patients taking endothelin receptor antagonists (5.4).
- If patients develop acute pulmonary edema during initiation of therapy with LETAIRIS, the possibility of pulmonary veno-occlusive disease should be considered (5.5).

### ADVERSE REACTIONS

Most common placebo-adjusted adverse reactions are peripheral edema, nasal congestion, sinusitis, flushing, palpitations, nasopharyngitis, abdominal pain, and constipation (6.1).

To report SUSPECTED ADVERSE REACTIONS, contact Gilead Sciences, Inc. at (1-800-GILEAD5, Option 3) or FDA at 1-800-FDA-1088 or [www.fda.gov/medwatch](http://www.fda.gov/medwatch).

### DRUG INTERACTIONS

- Multiple dose co-administration of ambrisentan and cyclosporine resulted in an about 2-fold increase in ambrisentan exposure in healthy volunteers. When co-administered with cyclosporine, limit the dose to 5 mg once daily (7).

### USE IN SPECIFIC POPULATIONS

- Pregnancy Category X: LETAIRIS is contraindicated in pregnant women (4.1 and 8.1).
- Nursing mothers: Breastfeeding while receiving LETAIRIS is not recommended (8.3).

See 17 for PATIENT COUNSELING INFORMATION and FDA-approved patient labeling (Medication Guide).

Revised: 10/2010

---

**FULL PRESCRIBING INFORMATION: CONTENTS\***

**WARNING – POTENTIAL LIVER INJURY; CONTRAINDICATED  
IN PREGNANCY**

**1 INDICATIONS AND USAGE**

**2 DOSAGE AND ADMINISTRATION**

- 2.1 Adult Dosage
- 2.2 Women of Childbearing Potential
- 2.3 Pre-existing Hepatic Impairment

**3 DOSAGE FORMS AND STRENGTHS**

**4 CONTRAINDICATIONS**

- 4.1 Pregnancy Category X

**5 WARNINGS AND PRECAUTIONS**

- 5.1 Potential Liver Injury
- 5.2 Hematological Changes
- 5.3 Fluid Retention
- 5.4 Decreased Sperm Counts
- 5.5 Pulmonary Veno-occlusive Disease
- 5.6 Prescribing and Distribution Program for LETAIRIS

**6 ADVERSE REACTIONS**

- 6.1 Clinical Trials Experience
- 6.2 Postmarketing Experience

**7 DRUG INTERACTIONS**

**8 USE IN SPECIFIC POPULATIONS**

- 8.1 Pregnancy
- 8.3 Nursing Mothers

- 8.4 Pediatric Use
- 8.5 Geriatric Use
- 8.6 Renal Impairment
- 8.7 Hepatic Impairment

**10 OVERDOSAGE**

**11 DESCRIPTION**

**12 CLINICAL PHARMACOLOGY**

- 12.1 Mechanism of Action
- 12.2 Pharmacodynamics
- 12.3 Pharmacokinetics

**13 NONCLINICAL TOXICOLOGY**

- 13.1 Carcinogenesis, Mutagenesis, Impairment of Fertility

**14 CLINICAL STUDIES**

- 14.1 Pulmonary Arterial Hypertension (PAH)
- 14.2 Long-term Treatment of PAH
- 14.3 Use in Patients with Prior Endothelin Receptor Antagonist (ERA) Related Liver Function Abnormalities

**16 HOW SUPPLIED/STORAGE AND HANDLING**

**17 PATIENT COUNSELING INFORMATION**

- 17.1 Importance of Preventing Pregnancy
- 17.2 Adverse Liver Effects
- 17.3 Hematological Change
- 17.4 Administration
- 17.5 FDA-Approved Medication Guide

\*Sections or subsections omitted from the full prescribing information are not listed.

## FULL PRESCRIBING INFORMATION

### **WARNING: POTENTIAL LIVER INJURY**

LETAIRIS (ambrisentan) can cause elevation of liver aminotransferases (ALT and AST) to at least 3 times the upper limit of normal (ULN). LETAIRIS treatment was associated with aminotransferase elevations  $>3$  x ULN in 0.8% of patients in 12-week trials and 2.8% of patients including long-term open-label trials out to one year. One case of aminotransferase elevations  $>3$  x ULN has been accompanied by bilirubin elevations  $>2$  x ULN. Because these changes are a marker for potentially serious liver injury, serum aminotransferase levels (and bilirubin if aminotransferase levels are elevated) must be measured prior to initiation of treatment and then monthly.

In the post-marketing period with another endothelin receptor antagonist (ERA), bosentan, rare cases of unexplained hepatic cirrhosis were reported after prolonged ( $>12$  months) therapy. In at least one case with bosentan, a late presentation (after  $>20$  months of treatment) included pronounced elevations in aminotransferases and bilirubin levels accompanied by non-specific symptoms, all of which resolved slowly over time after discontinuation of the suspect drug. This case reinforces the importance of strict adherence to the monthly monitoring schedule for the duration of treatment.

Elevations in aminotransferases require close attention. LETAIRIS should generally be avoided in patients with elevated aminotransferases ( $>3$  x ULN) at baseline because monitoring liver injury may be more difficult. If liver aminotransferase elevations are accompanied by clinical symptoms of liver injury (such as nausea, vomiting, fever, abdominal pain, jaundice, or unusual lethargy or fatigue) or increases in bilirubin  $>2$  x ULN, treatment should be stopped. There is no experience with the re-introduction of LETAIRIS in these circumstances.

### **CONTRAINDICATION: PREGNANCY**

LETAIRIS is very likely to produce serious birth defects if used by pregnant women, as this effect has been seen consistently when it is administered to animals [see *Contraindications (4.1)*]. Pregnancy must therefore be excluded before the initiation of treatment with LETAIRIS and prevented during treatment and for one month after stopping treatment by the use of two acceptable methods of contraception unless the patient has had a tubal sterilization or chooses to use a Copper T 380A IUD or LNG 20 IUS, in which case no additional contraception is needed. Obtain monthly pregnancy tests.

Because of the risks of liver injury and birth defects, LETAIRIS is available only through a special restricted distribution program called the LETAIRIS Education and Access Program (LEAP), by calling 1-866-664-LEAP (5327). Only prescribers and pharmacies registered with LEAP may prescribe and distribute LETAIRIS. In addition, LETAIRIS may be dispensed only to patients who are enrolled in and meet all conditions of LEAP [see *Warnings and Precautions (5.6)*].

## 1 INDICATIONS AND USAGE

LETAIRIS is indicated for the treatment of pulmonary arterial hypertension (WHO Group 1) in patients with WHO Class II or III symptoms to improve exercise capacity and delay clinical worsening.

## 2 DOSAGE AND ADMINISTRATION

### 2.1 Adult Dosage

Initiate treatment at 5 mg once daily with or without food, and consider increasing the dose to 10 mg once daily if 5 mg is tolerated.

Tablets may be administered with or without food. Tablets should not be split, crushed, or chewed. Doses higher than 10 mg once daily have not been studied in patients with pulmonary arterial hypertension (PAH). Liver function tests should be measured prior to initiation and during treatment with LETAIRIS [see *Warnings and Precautions (5.1)*].

### 2.2 Women of Childbearing Potential

Treat women of childbearing potential only after a negative pregnancy test and treat only women who are using two acceptable methods of contraception unless the patient has had a tubal sterilization or chooses to use a Copper T 380A IUD or LNG 20 IUS, in which case no additional contraception is needed. Pregnancy tests should be obtained monthly in women of childbearing potential taking LETAIRIS [see *Contraindications (4.1)* and *Warnings and Precautions (5.6)*].

### 2.3 Pre-existing Hepatic Impairment

LETAIRIS is not recommended in patients with moderate or severe hepatic impairment [see *Use in Specific Populations (8.7)*]. There is no information on the use of LETAIRIS in patients with mild hepatic impairment; however, exposure to ambrisentan may be increased in these patients.

## 3 DOSAGE FORMS AND STRENGTHS

LETAIRIS is available as 5 mg and 10 mg film-coated, unscored tablets.

## 4 CONTRAINDICATIONS

### 4.1 Pregnancy Category X

LETAIRIS may cause fetal harm when administered to a pregnant woman.

Ambrisentan was teratogenic at oral doses of  $\geq 15$  mg/kg/day in rats and  $\geq 7$  mg/kg/day in rabbits; it was not studied at lower doses. In both species, there were abnormalities of the lower jaw and hard and soft palate, malformation of the heart and great vessels, and failure of formation of the thymus and thyroid. Teratogenicity is a class effect of endothelin receptor antagonists. There are no data on the use of LETAIRIS in pregnant women.

LETAIRIS is contraindicated in women who are or may become pregnant. If this drug is used during pregnancy, or if the patient becomes pregnant while taking this drug, the patient should be apprised of the potential hazard to a fetus. Pregnancy must be excluded before the initiation of treatment with LETAIRIS and prevented during

treatment and for one month after stopping treatment by the use of two acceptable methods of contraception. If the patient has had a tubal sterilization or chooses to use a Copper T 380A IUD or LNG 20 IUS for pregnancy prevention, no additional contraception is needed [see *Dosage and Administration* (2.2), and *Warnings and Precautions* (5.6)].

## **5 WARNINGS AND PRECAUTIONS**

### **5.1 Potential Liver Injury (see BOXED WARNING)**

Treatment with endothelin receptor antagonists has been associated with dose-dependent liver injury manifested primarily by elevation of serum aminotransferases (ALT or AST), but sometimes accompanied by abnormal liver function (elevated bilirubin). The combination of aminotransferases greater than 3-times the upper limit of normal ( $>3 \times \text{ULN}$ ) and total bilirubin  $>2 \times \text{ULN}$  is a marker for potentially serious hepatic injury.

Liver function tests were closely monitored in all clinical studies with LETAIRIS. For all LETAIRIS-treated patients (N=483), the 12-week incidence of aminotransferases  $>3 \times \text{ULN}$  was 0.8% and  $>8 \times \text{ULN}$  was 0.2%. For placebo-treated patients, the 12-week incidence of aminotransferases  $>3 \times \text{ULN}$  was 2.3% and  $>8 \times \text{ULN}$  was 0.0%. The 1-year rate of aminotransferase elevations  $>3 \times \text{ULN}$  with LETAIRIS was 2.8% and  $>8 \times \text{ULN}$  was 0.5%. One case of aminotransferase elevations  $>3 \times \text{ULN}$  has been accompanied by bilirubin elevations  $>2 \times \text{ULN}$ .

Liver chemistries must be measured prior to initiation of LETAIRIS and at least every month thereafter. If there are aminotransferase elevations  $>3 \times \text{ULN}$  and  $\leq 5 \times \text{ULN}$ , they should be re-measured. If the confirmed level is  $>3 \times \text{ULN}$  and  $\leq 5 \times \text{ULN}$ , reduce the daily dose or interrupt treatment and continue to monitor every two weeks until the levels are  $<3 \times \text{ULN}$ . If there are aminotransferase elevations  $>5 \times \text{ULN}$  and  $\leq 8 \times \text{ULN}$ , LETAIRIS should be discontinued and monitoring should continue until the levels are  $<3 \times \text{ULN}$ . LETAIRIS can then be re-initiated with more frequent measurement of aminotransferase levels. If there are aminotransferase elevations  $>8 \times \text{ULN}$ , treatment should be stopped and re-initiation should not be considered.

LETAIRIS is not recommended in patients with elevated aminotransferases ( $>3 \times \text{ULN}$ ) at baseline because monitoring liver injury may be more difficult. If aminotransferase elevations are accompanied by clinical symptoms of liver injury (such as anorexia, nausea, vomiting, fever, malaise, fatigue, right upper quadrant abdominal discomfort, itching, or jaundice) or increases in bilirubin  $>2 \times \text{ULN}$ , LETAIRIS treatment should be stopped. There is no experience with the re-introduction of LETAIRIS in these circumstances.

### **5.2 Hematological Changes**

Decreases in hemoglobin concentration and hematocrit have followed administration of other endothelin receptor antagonists and were observed in clinical studies with LETAIRIS. These decreases were observed within the first few weeks of treatment with LETAIRIS, and stabilized thereafter. The mean decrease in hemoglobin from baseline

to end of treatment for those patients receiving LETAIRIS in the 12-week placebo-controlled studies was 0.8 g/dL.

Marked decreases in hemoglobin (>15% decrease from baseline resulting in a value below the lower limit of normal) were observed in 7% of all patients receiving LETAIRIS (and 10% of patients receiving 10 mg) compared to 4% of patients receiving placebo. The cause of the decrease in hemoglobin is unknown, but it does not appear to result from hemorrhage or hemolysis.

Measure hemoglobin prior to initiation of LETAIRIS, at one month, and periodically thereafter. Initiation of LETAIRIS therapy is not recommended for patients with clinically significant anemia. If a clinically significant decrease in hemoglobin is observed and other causes have been excluded, consider discontinuing LETAIRIS.

### **5.3 Fluid Retention**

Peripheral edema is a known class effect of endothelin receptor antagonists, and is also a clinical consequence of PAH and worsening PAH. In the placebo-controlled studies, there was an increased incidence of peripheral edema in patients treated with doses of 5 or 10 mg LETAIRIS compared to placebo [see *Adverse Reactions (6)*]. Most edema was mild to moderate in severity, and it occurred with greater frequency and severity in elderly patients.

In addition, there have been post-marketing reports of fluid retention in patients with pulmonary hypertension, occurring within weeks after starting LETAIRIS. Patients required intervention with a diuretic, fluid management, or, in some cases, hospitalization for decompensating heart failure.

If clinically significant fluid retention develops, with or without associated weight gain, further evaluation should be undertaken to determine the cause, such as LETAIRIS or underlying heart failure, and the possible need for specific treatment or discontinuation of LETAIRIS therapy.

### **5.4 Decreased Sperm Counts**

In a 6-month study of another endothelin receptor antagonist, bosentan, 25 male patients with WHO functional class III and IV PAH and normal baseline sperm count were evaluated for effects on testicular function. There was a decline in sperm count of at least 50% in 25% of the patients after 3 or 6 months of treatment with bosentan. One patient developed marked oligospermia at 3 months and the sperm count remained low with 2 follow-up measurements over the subsequent 6 weeks. Bosentan was discontinued and after 2 months the sperm count had returned to baseline levels. In 22 patients who completed 6 months of treatment, sperm count remained within the normal range and no changes in sperm morphology, sperm motility, or hormone levels were observed. Based on these findings and preclinical data [see *Nonclinical Toxicology (13.1)*] from endothelin receptor antagonists, it cannot be excluded that endothelin receptor antagonists such as LETAIRIS have an adverse effect on spermatogenesis.

## 5.5 Pulmonary Veno-occlusive Disease

If patients develop acute pulmonary edema during initiation of therapy with vasodilating agents such as LETAIRIS, the possibility of pulmonary veno-occlusive disease should be considered, and if confirmed LETAIRIS should be discontinued.

## 5.6 Prescribing and Distribution Program for LETAIRIS

Because of the risks of liver injury and birth defects, LETAIRIS is available only through a special restricted distribution program called the LETAIRIS Education and Access Program (LEAP). Only prescribers and pharmacies registered with LEAP may prescribe and distribute LETAIRIS. In addition, LETAIRIS may be dispensed only to patients who are enrolled in and meet all conditions of LEAP.

To enroll in LEAP, prescribers must complete the LEAP Prescriber Enrollment and Agreement Form indicating agreement to (see LEAP Prescriber Enrollment and Agreement Form for full prescribing physician agreement):

- Read the Prescribing Information (PI) and Medication Guide for LETAIRIS.
- Enroll all patients in LEAP and re-enroll patients after the first 12 months of treatment and annually thereafter.
- Review the LETAIRIS Medication Guide and patient education brochure(s) with every patient.
- Educate patients on the risks of LETAIRIS, including the risks of hepatotoxicity and teratogenicity [see *Boxed Warning*].
- Educate and counsel women of childbearing potential to use highly reliable contraception during LETAIRIS treatment and for one month after stopping treatment. If the patient has had a tubal sterilization or chooses to use a Copper T 380A IUD or LNG 20 IUS for pregnancy prevention, no additional contraception is needed. Women who do not choose one of these methods should always use two acceptable forms of contraception—one hormone method and one barrier method, or two barrier methods where one method is the male condom.

Acceptable hormone methods include: progesterone injectables, progesterone implants, combination oral contraceptives, transdermal patch, and vaginal ring.

Acceptable barrier methods include: diaphragm (with spermicide), cervical cap (with spermicide), and the male condom.

Partner's vasectomy must be used along with a hormone method or a barrier method [see *Boxed Warning, Contraindications (4.1)*].

- Order and review liver function tests (including aminotransferases and bilirubin) prior to initiation of LETAIRIS treatment and monthly during treatment.
- For women of childbearing potential, order and review a pregnancy test prior to initiation of LETAIRIS treatment and monthly during treatment.
- Counsel patients who fail to comply with the program requirements.

- Notify LEAP of any adverse events, including liver injury, or if any patient becomes pregnant during LETAIRIS treatment.

## **6 ADVERSE REACTIONS**

### **6.1 Clinical Trials Experience**

See *Boxed Warning* for discussion of potential liver injury and *Warnings and Precautions (5.2)* for discussion of hematological changes.

Because clinical trials are conducted under widely varying conditions, adverse reaction rates observed in the clinical trials of a drug cannot be directly compared to rates in the clinical trials of another drug and may not reflect the rates observed in practice.

Safety data for LETAIRIS were obtained from two 12-week, placebo-controlled studies in patients with PAH (ARIES-1 and ARIES-2) and four nonplacebo-controlled studies in 483 patients with PAH who were treated with doses of 1, 2.5, 5, or 10 mg once daily. The exposure to LETAIRIS in these studies ranged from 1 day to 4 years (N=418 for at least 6 months and N=343 for at least 1 year).

In ARIES-1 and ARIES-2, a total of 261 patients received LETAIRIS at doses of 2.5, 5, or 10 mg once daily and 132 patients received placebo. The adverse events that occurred in >3% of the patients receiving LETAIRIS and were more frequent on LETAIRIS than placebo are shown in Table 1.

**Table 1 Adverse Events in >3% of PAH Patients Receiving LETAIRIS and More Frequent than Placebo**

Adverse event	Placebo (N=132)	LETAIRIS (N=261)	
	n (%)	n (%)	Placebo-adjusted (%)
Peripheral edema	14 (11)	45 (17)	6
Nasal congestion	2 (2)	15 (6)	4
Sinusitis	0 (0)	8 (3)	3
Flushing	1 (1)	10 (4)	3
Palpitations	3 (2)	12 (5)	3
Nasopharyngitis	1 (1)	9 (3)	2
Abdominal pain	1 (1)	8 (3)	2
Constipation	2 (2)	10 (4)	2
Dyspnea	4 (3)	11 (4)	1
Headache	18 (14)	38 (15)	1

Note: This table includes all adverse events >3% incidence in the combined LETAIRIS treatment group and more frequent than in the placebo group, with a difference of ≥1% between the LETAIRIS and placebo groups.

Most adverse drug reactions were mild to moderate and only nasal congestion was dose-dependent. Fewer patients receiving LETAIRIS had adverse events related to liver function tests compared to placebo.

Few notable differences in the incidence of adverse drug reactions were observed for patients by age or sex. Peripheral edema was similar in younger patients (<65 years) receiving LETAIRIS (14%; 29/205) or placebo (13%; 13/104), and was greater in elderly patients (≥65 years) receiving LETAIRIS (29%; 16/56) compared to placebo (4%; 1/28). The results of such subgroup analyses must be interpreted cautiously.

The incidence of treatment discontinuations due to adverse events other than those related to pulmonary hypertension during the clinical trials in patients with pulmonary arterial hypertension was similar for LETAIRIS (2%; 5/261 patients) and placebo (2%; 3/132 patients). The incidence of patients with serious adverse events other than those related to pulmonary hypertension during the clinical trials in patients with pulmonary arterial hypertension was similar for placebo (7%; 9/132 patients) and for LETAIRIS (5%; 13/261 patients).

## 6.2 Postmarketing Experience

The following adverse reactions were identified during postapproval use of LETAIRIS: Fluid retention [see *Warnings and Precautions* (5.3)], heart failure (associated with fluid retention), hypersensitivity (e.g., angioedema, rash), anemia, nausea, and vomiting.

Because these reactions were reported voluntarily from a population of uncertain size, it is not possible to reliably estimate the frequency or establish a causal relationship to drug exposure.

## **7 DRUG INTERACTIONS**

Multiple dose co-administration of ambrisentan and cyclosporine resulted in an approximately 2-fold increase in ambrisentan exposure in healthy volunteers; therefore, limit the dose of ambrisentan to 5 mg once daily when co-administered with cyclosporine [see *Clinical Pharmacology* (12.3)].

## **8 USE IN SPECIFIC POPULATIONS**

### **8.1 Pregnancy**

Pregnancy Category X [see *Contraindications* (4.1)].

### **8.3 Nursing Mothers**

It is not known whether ambrisentan is excreted in human milk. Breastfeeding while receiving LETAIRIS is not recommended. A preclinical study in rats has shown decreased survival of newborn pups (mid and high doses) and effects on testicle size and fertility of pups (high dose) following maternal treatment with ambrisentan from late gestation through weaning. Doses tested were 17x, 51x, and 170x (low, mid, high dose, respectively) the maximum oral human dose of 10 mg on a mg/mm<sup>2</sup> basis.

### **8.4 Pediatric Use**

Safety and effectiveness of LETAIRIS in pediatric patients have not been established.

### **8.5 Geriatric Use**

In the two placebo-controlled clinical studies of LETAIRIS, 21% of patients were ≥65 years old and 5% were ≥75 years old. The elderly (age ≥65 years) showed less improvement in walk distances with LETAIRIS than younger patients did, but the results of such subgroup analyses must be interpreted cautiously. Peripheral edema was more common in the elderly than in younger patients.

### **8.6 Renal Impairment**

The impact of renal impairment on the pharmacokinetics of ambrisentan has been examined using a population pharmacokinetic approach in PAH patients with creatinine clearances ranging between 20 and 150 mL/min. There was no significant impact of mild or moderate renal impairment on exposure to ambrisentan [see *Clinical Pharmacology* (12.3)]. Dose adjustment of LETAIRIS in patients with mild or moderate renal impairment is therefore not required. There is no information on the exposure to ambrisentan in patients with severe renal impairment.

The impact of hemodialysis on the disposition of ambrisentan has not been investigated.

### **8.7 Hepatic Impairment**

The influence of pre-existing hepatic impairment on the pharmacokinetics of ambrisentan has not been evaluated. Because there is *in vitro* and *in vivo* evidence of

significant metabolic and biliary contribution to the elimination of ambrisentan, hepatic impairment would be expected to have significant effects on the pharmacokinetics of ambrisentan [see *Clinical Pharmacology* (12.3)]. LETAIRIS is not recommended in patients with moderate or severe hepatic impairment. There is no information on the use of LETAIRIS in patients with mild pre-existing impaired liver function; however, exposure to ambrisentan may be increased in these patients [see *Dosage and Administration* (2.3)].

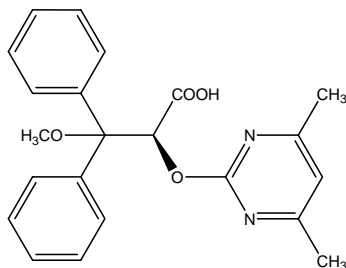
## 10 OVERDOSAGE

There is no experience with overdosage of LETAIRIS. The highest single dose of LETAIRIS administered to healthy volunteers was 100 mg and the highest daily dose administered to patients with PAH was 10 mg once daily. In healthy volunteers, single doses of 50 mg and 100 mg (5 to 10 times the maximum recommended dose) were associated with headache, flushing, dizziness, nausea, and nasal congestion. Massive overdosage could potentially result in hypotension that may require intervention.

## 11 DESCRIPTION

LETAIRIS is the brand name for ambrisentan, an endothelin receptor antagonist that is selective for the endothelin type-A (ET<sub>A</sub>) receptor. The chemical name of ambrisentan is (+)-(2S)-2-[(4,6-dimethylpyrimidin-2-yl)oxy]-3-methoxy-3,3-diphenylpropanoic acid. It has a molecular formula of C<sub>22</sub>H<sub>22</sub>N<sub>2</sub>O<sub>4</sub> and a molecular weight of 378.42. It contains a single chiral center determined to be the (S) configuration and has the following structural formula:

**Figure 1 Ambrisentan Structural Formula**



Ambrisentan is a white to off-white, crystalline solid. It is a carboxylic acid with a pK<sub>a</sub> of 4.0. Ambrisentan is practically insoluble in water and in aqueous solutions at low pH. Solubility increases in aqueous solutions at higher pH. In the solid state ambrisentan is very stable, is not hygroscopic, and is not light sensitive.

LETAIRIS is available as 5 mg and 10 mg film-coated tablets for once-daily oral administration. The tablets include the following inactive ingredients: croscarmellose sodium, lactose monohydrate, magnesium stearate and microcrystalline cellulose. The tablets are film-coated with a coating material containing FD&C Red #40 aluminum lake, lecithin, polyethylene glycol, polyvinyl alcohol, talc, and titanium dioxide. Each square, pale pink LETAIRIS tablet contains 5 mg of ambrisentan. Each oval, deep pink LETAIRIS tablet contains 10 mg of ambrisentan. LETAIRIS tablets are unscored.

## 12 CLINICAL PHARMACOLOGY

### 12.1 Mechanism of Action

Endothelin-1 (ET-1) is a potent autocrine and paracrine peptide. Two receptor subtypes, ET<sub>A</sub> and ET<sub>B</sub>, mediate the effects of ET-1 in the vascular smooth muscle and endothelium. The primary actions of ET<sub>A</sub> are vasoconstriction and cell proliferation, while the predominant actions of ET<sub>B</sub> are vasodilation, antiproliferation, and ET-1 clearance.

In patients with PAH, plasma ET-1 concentrations are increased as much as 10-fold and correlate with increased mean right atrial pressure and disease severity. ET-1 and ET-1 mRNA concentrations are increased as much as 9-fold in the lung tissue of patients with PAH, primarily in the endothelium of pulmonary arteries. These findings suggest that ET-1 may play a critical role in the pathogenesis and progression of PAH.

Ambrisentan is a high affinity ( $K_i=0.011$  nM) ET<sub>A</sub> receptor antagonist with a high selectivity for the ET<sub>A</sub> versus ET<sub>B</sub> receptor (>4000-fold). The clinical impact of high selectivity for ET<sub>A</sub> is not known.

### 12.2 Pharmacodynamics

#### Cardiac Electrophysiology

In a randomized, positive- and placebo-controlled, parallel-group study, healthy subjects received either LETAIRIS 10 mg daily followed by a single dose of 40 mg, placebo followed by a single dose of moxifloxacin 400 mg, or placebo alone. LETAIRIS 10 mg daily had no significant effect on the QTc interval. The 40 mg dose of LETAIRIS increased mean QTc at  $t_{max}$  by 5 ms with an upper 95% confidence limit of 9 ms. For patients receiving LETAIRIS 5-10 mg daily and not taking metabolic inhibitors, no significant QT prolongation is expected.

### 12.3 Pharmacokinetics

The pharmacokinetics of ambrisentan (S-ambrisentan) in healthy subjects are dose proportional. The absolute bioavailability of ambrisentan is not known. Ambrisentan is rapidly absorbed with peak concentrations occurring approximately 2 hours after oral administration in healthy subjects and PAH patients. Food does not affect its bioavailability. *In vitro* studies indicate that ambrisentan is a substrate of P-gp. Ambrisentan is highly bound to plasma proteins (99%). The elimination of ambrisentan is predominantly by non-renal pathways, but the relative contributions of metabolism and biliary elimination have not been well characterized. In plasma, the AUC of 4-hydroxymethyl ambrisentan accounts for approximately 4% relative to parent ambrisentan AUC. The *in vivo* inversion of S-ambrisentan to R-ambrisentan is negligible. The mean oral clearance of ambrisentan is 38 mL/min and 19 mL/min in healthy subjects and in PAH patients, respectively. Although ambrisentan has a 15-hour terminal half-life, the mean trough concentration of ambrisentan at steady-state is about 15% of the mean peak concentration and the accumulation factor is about 1.2 after long-term daily dosing, indicating that the effective half-life of ambrisentan is about 9 hours.

## Drug Interactions

### *In vitro* studies

Studies with human liver tissue indicate that ambrisentan is metabolized by CYP3A, CYP2C19, and uridine 5'-diphosphate glucuronosyltransferases (UGTs) 1A9S, 2B7S, and 1A3S. *In vitro* studies suggest that ambrisentan is a substrate of the Organic Anion Transport Protein (OATP), and a substrate but not an inhibitor of P-glycoprotein (P-gp). Drug interactions might be expected because of these factors; however, a clinically relevant interaction has been demonstrated only with cyclosporine [see *Drug Interactions (7)*]. Ambrisentan does not inhibit or induce phase I or II drug metabolizing enzymes at clinically relevant concentrations.

### *In vivo* studies

#### *Effect of other drugs on ambrisentan*

The drug interaction potential of ambrisentan has been evaluated using a strong CYP3A inhibitor (ketoconazole), a strong CYP3A and CYP2C19 inducer (rifampin), a CYP2C19 inhibitor (omeprazole), OATP inhibitors (rifampin, cyclosporine), a P-gp, Breast Cancer Resistance Protein (BCRP), OATP1B1, OATP1B3, and CYP3A inhibitor (cyclosporine), a P-gp and UGT inducer (rifampin), and several substrates of CYPs and P-gp.

**Cyclosporine:** A 14-day repeated dose study in healthy volunteers evaluated the effect of a cyclosporine twice daily regimen (targeting a trough concentration of 150 – 200 ng/mL) on ambrisentan (5 mg once daily) and vice-versa. An about 2-fold increase in the AUC and an about 1.5-fold increase in  $C_{max}$  of ambrisentan were observed [see *Drug Interactions (7)*].

**Rifampin:** Acute co-administration (3 days) of rifampin (600 mg once daily) was associated with a transient 2-fold increase in the AUC of ambrisentan (10 mg once daily) in healthy volunteers; however, by Day 7, co-administration of rifampin had no clinically relevant effect on AUC or  $C_{max}$  of ambrisentan.

Co-administration of ambrisentan with the following drugs does not result in clinically relevant changes in ambrisentan exposure:

- Ketoconazole
- Omeprazole
- Sildenafil
- Tadalafil

#### *Effect of ambrisentan on other drugs*

Co-administration of ambrisentan does not change the exposure to the following drugs:

- Cyclosporine
- Warfarin
- Digoxin

- Sildenafil
- Tadalafil
- Ethinylestradiol/Norethindrone

## 13 NONCLINICAL TOXICOLOGY

### 13.1 Carcinogenesis, Mutagenesis, Impairment of Fertility

Oral carcinogenicity studies of up to two years duration were conducted at starting doses of 10, 30, and 60 mg/kg/day in rats (8 to 48 times the maximum recommended human dose [MRHD] on a mg/m<sup>2</sup> basis) and at 50, 150 and 250 mg/kg/day in mice (28 to 140 times the MRHD). In the rat study, the high and mid-dose male and female groups had their doses lowered to 40 and 20 mg/kg/day, respectively, in week 51 because of effects on survival. The high dose males and females were taken off drug completely in weeks 69 and 93, respectively. The only evidence of ambrisentan-related carcinogenicity was a positive trend in male rats, for the combined incidence of benign basal cell tumor and basal cell carcinoma of skin/subcutis in the mid-dose group (high-dose group excluded from analysis), and the occurrence of mammary fibroadenomas in males in the high-dose group. In the mouse study, high dose male and female groups had their doses lowered to 150 mg/kg/day in week 39 and were taken off drug completely in week 96 (males) or week 76 (females). In mice, ambrisentan was not associated with excess tumors in any dosed group.

Positive findings of clastogenicity were detected, at drug concentrations producing moderate to high toxicity, in the chromosome aberration assay in cultured human lymphocytes. There was no evidence for genetic toxicity of ambrisentan when tested *in vitro* in bacteria (Ames test) or *in vivo* in rats (micronucleus assay, unscheduled DNA synthesis assay).

The development of testicular tubular atrophy and impaired fertility has been linked to the chronic administration of endothelin receptor antagonists in rodents. Testicular tubular degeneration was observed in rats treated with ambrisentan for two years at doses  $\geq 10$  mg/kg/day (8-fold MRHD). Increased incidences of testicular findings were also observed in mice treated for two years at doses  $\geq 50$  mg/kg/day (28-fold MRHD). Effects on sperm count, sperm morphology, mating performance and fertility were observed in fertility studies in which male rats were treated with ambrisentan at oral doses of 300 mg/kg/day (236-fold MRHD). At doses of  $\geq 10$  mg/kg/day, observations of testicular histopathology in the absence of fertility and sperm effects were also present.

## 14 CLINICAL STUDIES

### 14.1 Pulmonary Arterial Hypertension (PAH)

Two 12-week, randomized, double-blind, placebo-controlled, multicenter studies were conducted in 393 patients with PAH (WHO Group 1). The two studies were identical in design except for the doses of LETAIRIS and the geographic region of the investigational sites. ARIES-1 compared once-daily doses of 5 mg and 10 mg LETAIRIS to placebo, while ARIES-2 compared once-daily doses of 2.5 mg and 5 mg LETAIRIS to placebo. In both studies, LETAIRIS or placebo was added to current

therapy, which could have included a combination of anticoagulants, diuretics, calcium channel blockers, or digoxin, but not epoprostenol, treprostinil, iloprost, bosentan, or sildenafil. The primary study endpoint was 6-minute walk distance. In addition, clinical worsening, WHO functional class, dyspnea, and SF-36<sup>®</sup> Health Survey were assessed.

Patients had idiopathic PAH (64%) or PAH associated with connective tissue disease (32%), HIV infection (3%), or anorexigen use (1%). There were no patients with PAH associated with congenital heart disease.

Patients had WHO functional class I (2%), II (38%), III (55%), or IV (5%) symptoms at baseline. The mean age of patients was 50 years, 79% of patients were female, and 77% were Caucasian.

### Submaximal Exercise Capacity

Results of the 6-minute walk distance at 12 weeks for the ARIES-1 and ARIES-2 studies are shown in Table 2 and Figure 2.

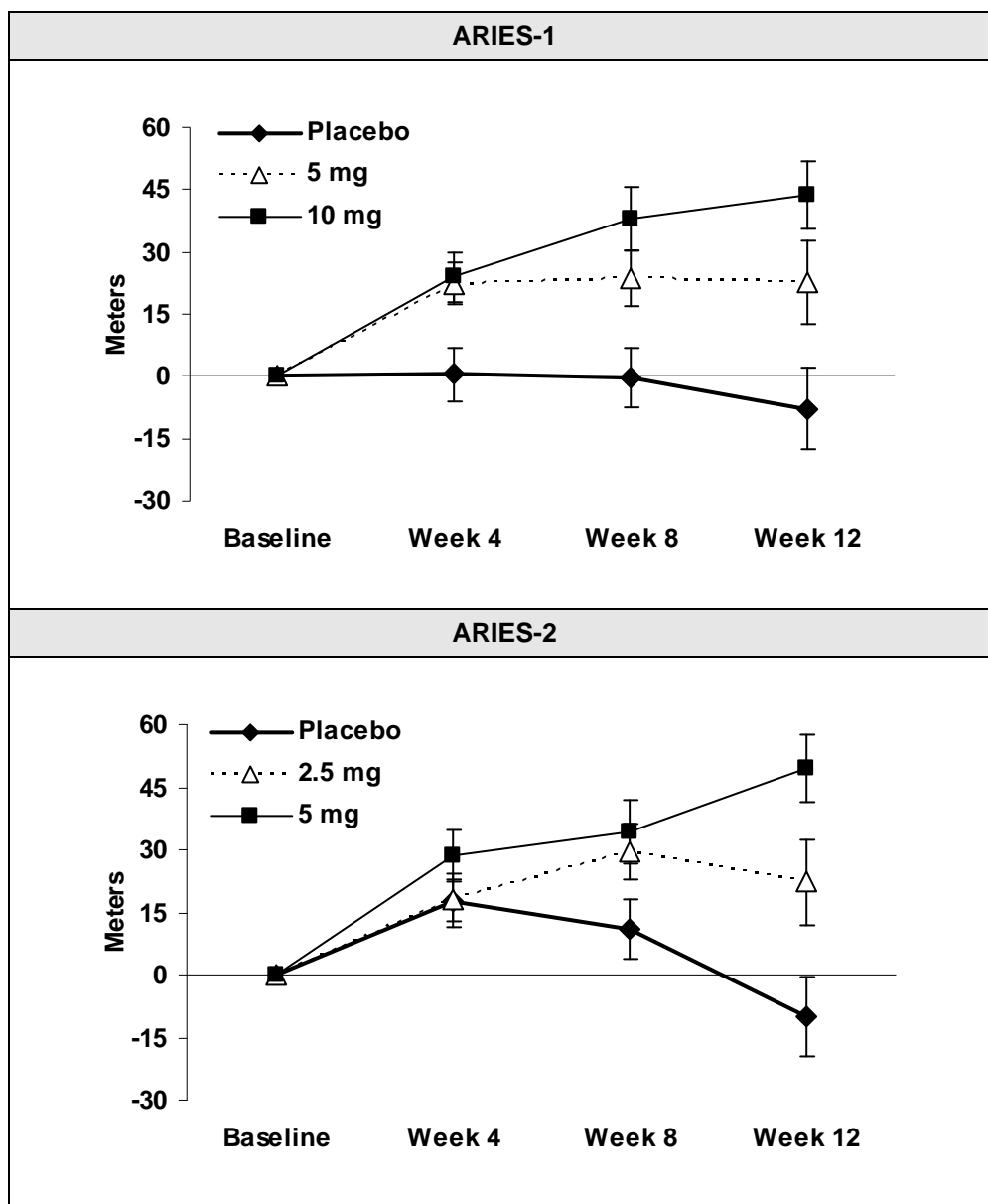
**Table 2 Changes from Baseline in 6-Minute Walk Distance (meters)**

	ARIES-1			ARIES-2		
	Placebo (N=67)	5 mg (N=67)	10 mg (N=67)	Placebo (N=65)	2.5 mg (N=64)	5 mg (N=63)
Baseline	342 ± 73	340 ± 77	342 ± 78	343 ± 86	347 ± 84	355 ± 84
Mean change from baseline	-8 ± 79	23 ± 83	44 ± 63	-10 ± 94	22 ± 83	49 ± 75
Placebo-adjusted mean change from baseline	–	31	51	–	32	59
Placebo-adjusted median change from baseline	–	27	39	–	30	45
p-value†	–	0.008	<0.001	–	0.022	<0.001

Mean ± standard deviation

† p-values are Wilcoxon rank sum test comparisons of LETAIRIS to placebo at Week 12 stratified by idiopathic PAH and non-idiopathic PAH patients

Figure 2 Mean Change in 6-minute Walk Distance



Mean change from baseline in 6-minute walk distance in the placebo and LETAIRIS groups. Values are expressed as mean  $\pm$  standard error of the mean.

In both studies, treatment with LETAIRIS resulted in a significant improvement in 6-minute walk distance for each dose of LETAIRIS and the improvements increased with dose. An increase in 6-minute walk distance was observed after 4 weeks of treatment with LETAIRIS, with a dose-response observed after 12 weeks of treatment. Improvements in walk distance with LETAIRIS were smaller for elderly patients (age  $\geq 65$ ) than younger patients and for patients with secondary PAH than for patients

with idiopathic PAH. The results of such subgroup analyses must be interpreted cautiously.

The effects of LETAIRIS on walk distances at trough drug levels are not known. Because only once daily dosing was studied in the clinical trials, the efficacy and safety of more frequent dosing regimens for LETAIRIS are not known. If exercise capacity is not sustained throughout the day in a patient, consider other PAH treatments that have been studied with more frequent dosing regimens.

### Clinical Worsening

Time to clinical worsening of PAH was defined as the first occurrence of death, lung transplantation, hospitalization for PAH, atrial septostomy, study withdrawal due to the addition of other PAH therapeutic agents or study withdrawal due to early escape. Early escape was defined as meeting two or more of the following criteria: a 20% decrease in the 6-minute walk distance; an increase in WHO functional class; worsening right ventricular failure; rapidly progressing cardiogenic, hepatic, or renal failure; or refractory systolic hypotension. The clinical worsening events during the 12-week treatment period of the LETAIRIS clinical trials are shown in Table 3 and Figure 3.

**Table 3 Time to Clinical Worsening**

	ARIES-1		ARIES-2	
	Placebo (N=67)	LETAIRIS (N=134)	Placebo (N=65)	LETAIRIS (N=127)
Clinical worsening, no. (%)	7 (10%)	4 (3%)	13 (22%)	8 (6%)
Hazard ratio	–	0.28	–	0.30
p-value, Fisher exact test	–	0.044	–	0.006
p-value, Log-rank test	–	0.030	–	0.005

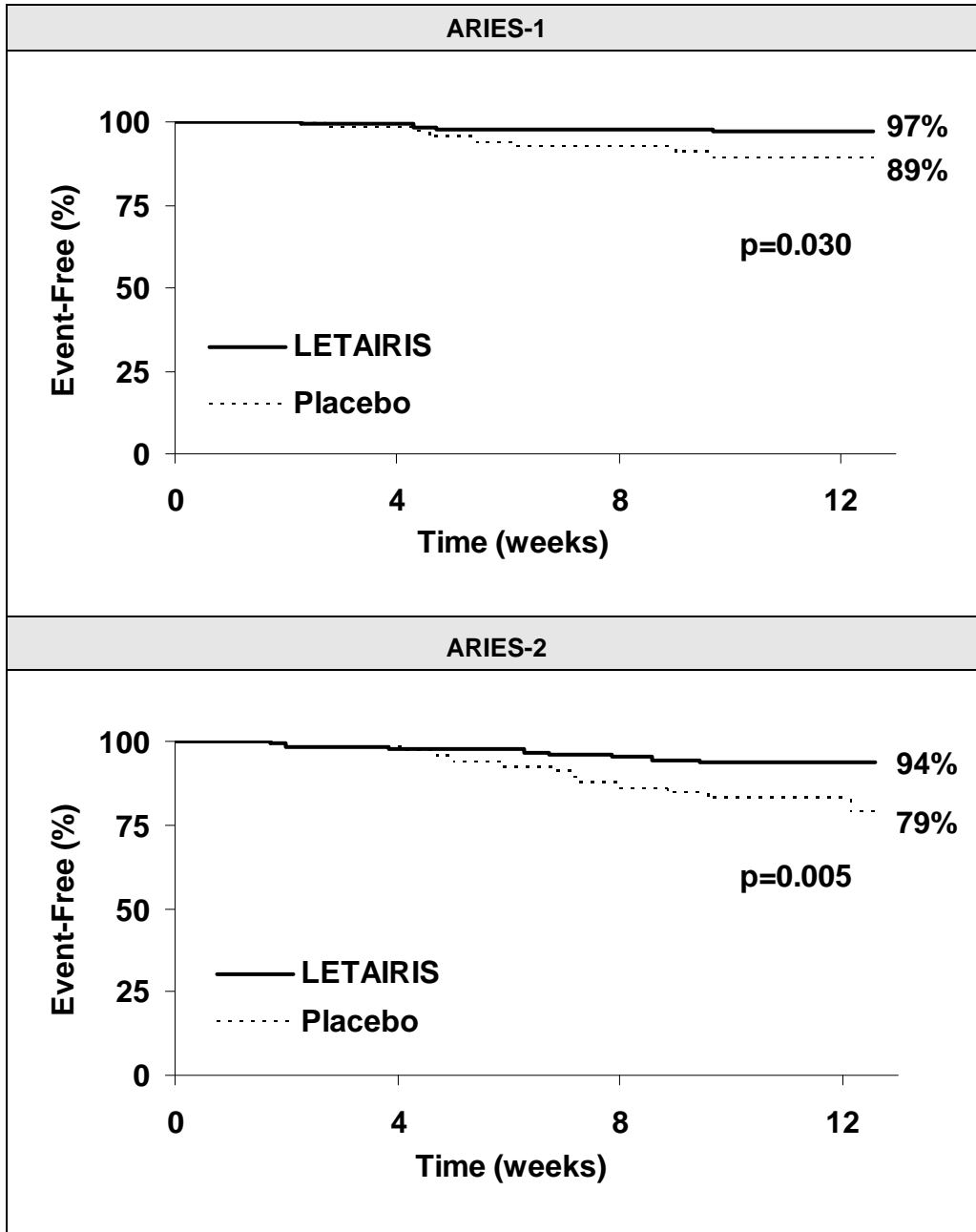
Intention-to-treat population

Note: Patients may have had more than one reason for clinical worsening.

Nominal p-values

There was a significant delay in the time to clinical worsening for patients receiving LETAIRIS compared to placebo. Results in subgroups such as the elderly were also favorable.

**Figure 3 Time to Clinical Worsening**



Time from randomization to clinical worsening with Kaplan-Meier estimates of the proportions of failures in ARIES-1 and ARIES-2.

p-values shown are the log-rank comparisons of LETAIRIS to placebo stratified by idiopathic PAH and non-idiopathic PAH patients

## **14.2 Long-term Treatment of PAH**

The long-term follow-up of the patients who were treated with LETAIRIS in the two pivotal studies and their open-label extension (N=383) shows that 95% were still alive at one year and 94% were still receiving LETAIRIS monotherapy. These uncontrolled observations do not allow comparison with a group not given LETAIRIS and cannot be used to determine the long-term effect of LETAIRIS.

## **14.3 Use in Patients with Prior Endothelin Receptor Antagonist (ERA) Related Liver Function Abnormalities**

In an uncontrolled, open-label study, 36 patients who had previously discontinued endothelin receptor antagonists (ERAs: bosentan, an investigational drug, or both) due to aminotransferase elevations  $>3$  x upper limit of normal (ULN) were treated with LETAIRIS. Prior elevations were predominantly moderate, with 64% of the ALT elevations  $<5$  x ULN, but 9 patients had elevations  $>8$  x ULN. Eight patients had been re-challenged with bosentan and/or the investigational ERA and all eight had a recurrence of aminotransferase abnormalities that required discontinuation of ERA therapy. All patients had to have normal aminotransferase levels on entry to this study. Twenty-five of the 36 patients were also receiving prostanoid and/or phosphodiesterase type 5 (PDE5) inhibitor therapy. Two patients discontinued early (including one of the patients with a prior 8 x ULN elevation). Of the remaining 34 patients, one patient experienced a mild aminotransferase elevation at 12 weeks on LETAIRIS 5 mg that resolved with decreasing the dosage to 2.5 mg, and that did not recur with later escalations to 10 mg. With a median follow-up of 13 months and with 50% of patients increasing the dose of LETAIRIS to 10 mg, no patients were discontinued for aminotransferase elevations. While the uncontrolled study design does not provide information about what would have occurred with re-administration of previously used ERAs or show that LETAIRIS led to fewer aminotransferase elevations than would have been seen with those drugs, the study indicates that LETAIRIS may be tried in patients who have experienced asymptomatic aminotransferase elevations on other ERAs after aminotransferase levels have returned to normal.

## **16 HOW SUPPLIED/STORAGE AND HANDLING**

Because of the risk of liver injury and birth defects, LETAIRIS may be prescribed only through the LETAIRIS Education and Access Program (LEAP) by calling 1-866-664-LEAP (5327) or by logging on to [www.letairis.com](http://www.letairis.com). Adverse events can also be reported directly via this number.

LETAIRIS film-coated, unscored tablets are supplied as follows:

Package Configuration	Tablet Strength	NDC No.	Description of Tablet; Debossed on Tablet; Size
30 count blister	5 mg	61958-0801-2	Square convex; pale pink; "5" on side 1 and "GSI" on side 2; 6.6 mm Square
30 count blister	10 mg	61958-0802-2	Oval convex; deep pink; "10" on side 1 and "GSI" on side 2; 9.8 mm x 4.9 mm Oval

Rx only

Store at 25 °C (77 °F); excursions permitted to 15-30 °C (59-86 °F) [see USP controlled room temperature]. Store LETAIRIS in its original packaging.

## 17 PATIENT COUNSELING INFORMATION

As a part of patient counseling, doctors must review the LETAIRIS Medication Guide with every patient [see FDA-Approved Medication Guide (17.5)].

### 17.1 Importance of Preventing Pregnancy

Patients should be advised that LETAIRIS may cause fetal harm. LETAIRIS treatment should only be initiated in women of childbearing potential following a negative pregnancy test.

Women of childbearing potential should be informed of the importance of monthly pregnancy tests and the need to use highly reliable contraception during LETAIRIS treatment and for one month after stopping treatment. If the patient has had a tubal sterilization or chooses to use a Copper T 380A IUD or LNG 20 IUS for pregnancy prevention, no additional contraception is needed. Women who do not choose one of these methods should always use two acceptable forms of contraception—one hormone method and one barrier method, or two barrier methods where one method is the male condom. Acceptable hormone methods include: progesterone injectables, progesterone implants, combination oral contraceptives, transdermal patch, and vaginal ring. Acceptable barrier methods include: diaphragm (with spermicide), cervical cap (with spermicide), and the male condom. Partner's vasectomy must be used along with a hormone method or a barrier method.

Patients should be instructed to immediately contact their physician if they suspect they may be pregnant [see Warnings and Precautions (5.6)].

### 17.2 Adverse Liver Effects

Patients should be advised of the importance of monthly liver function testing and instructed to immediately report any symptoms of potential liver injury (such as

anorexia, nausea, vomiting, fever, malaise, fatigue, right upper quadrant abdominal discomfort, jaundice, dark urine or itching) to their physician.

### **17.3 Hematological Change**

Patients should be advised of the importance of hemoglobin testing.

### **17.4 Administration**

Patients should be advised not to split, crush, or chew tablets.

### **17.5 FDA-Approved Medication Guide**

\*Sections or subsections omitted from the full prescribing information are not listed.

Gilead Sciences, Inc., Foster City, CA 94404

Revised October 2010

LETAIRIS is a registered trademark of Gilead Sciences, Inc. Gilead and the Gilead logo are trademarks of Gilead Sciences, Inc. Other brands noted herein are the property of their respective owners.

© 2010 Gilead Sciences, Inc.

GS22-081-006

**Medication Guide**  
**LETAIRIS® (le-TAIR-is)**  
**Tablets**  
(ambrisentan)

Read this Medication Guide before you start taking LETAIRIS and each time you get a refill. There may be new information. This Medication Guide does not take the place of talking with your doctor about your medical condition or your treatment.

### **What is the most important information I should know about LETAIRIS?**

- **Possible liver injury.**

LETAIRIS can cause liver injury. You must have a blood test to check your liver function before you start LETAIRIS and each month after that. Your doctor will order these blood tests. (See “What are the possible side effects of LETAIRIS?” for information about the signs of liver problems.) **Tell your doctor if you have had moderate or severe liver problems, including liver problems while taking other medicines.**

- **Serious birth defects.**

**LETAIRIS can cause serious birth defects if taken during pregnancy. Women must not be pregnant when they start taking LETAIRIS or become pregnant during treatment.** Women who are able to get pregnant must have a negative pregnancy test before beginning treatment with LETAIRIS and each month during treatment. Your doctor will decide when to do the test, depending on your menstrual cycle.

**Women who are able to get pregnant must use two acceptable forms of birth control at the same time, during LETAIRIS treatment and for one month after stopping LETAIRIS.** Talk with your doctor or gynecologist (a doctor who specializes in female reproduction) to find out about how to prevent pregnancy. **Do not have unprotected sex. Tell your doctor right away if you miss a menstrual period or think you may be pregnant.**

LETAIRIS is available only through a restricted program called the LETAIRIS Education and Access Program (LEAP). To receive LETAIRIS, you must talk to your doctor, understand the benefits and risks of LETAIRIS, and agree to all of the instructions in the LEAP program.

### **What is LETAIRIS?**

LETAIRIS is a prescription medicine to treat pulmonary arterial hypertension (PAH), which is high blood pressure in the arteries of your lungs.

LETAIRIS can improve your ability to exercise and it can help slow down the worsening of your physical condition and symptoms.

### **Who should not take LETAIRIS?**

**Do not take LETAIRIS if:**

- **you are pregnant, plan to become pregnant, or become pregnant during treatment with LETAIRIS. LETAIRIS can cause serious birth defects.** (See “What is the most important information I should know about LETAIRIS?”) Serious birth defects from LETAIRIS happen early in pregnancy.
- **your blood tests show possible liver injury.**

Tell your doctor about all your medical conditions and all the medicines you take including prescription and nonprescription medicines. LETAIRIS and other medicines may affect each other causing side effects. Do not start any new medicines until you check with your doctor.

**Especially tell your doctor if you take the medicine cyclosporine (Gengraf, Neoral, Sandimmune).** Your doctor may need to change your dose of LETAIRIS. You should not take more than 5 mg of LETAIRIS each day if you also take cyclosporine.

LETAIRIS has not been studied in children.

## How should I take LETAIRIS?

LETAIRIS will be mailed to you by a specialty pharmacy. Your doctor will give you complete details.

- Take LETAIRIS exactly as your doctor tells you. Do not stop taking LETAIRIS unless your doctor tells you.
- You can take LETAIRIS with or without food.
- Do not split, crush or chew LETAIRIS tablets.
- It will be easier to remember to take LETAIRIS if you take it at the same time each day.
- If you take more than your regular dose of LETAIRIS, call your doctor right away.
- If you miss a dose, take it as soon as you remember that day. Take your next dose at the regular time. Do not take two doses at the same time to make up for a missed dose.

## What should I avoid while taking LETAIRIS?

- **Do not get pregnant** while taking LETAIRIS. (See the serious birth defects section of "What is the most important information I should know about LETAIRIS?") If you miss a menstrual period, or think you might be pregnant, call your doctor right away.
- **Breastfeeding is not recommended** while taking LETAIRIS. It is not known if LETAIRIS can pass through your milk and harm your baby.

## What are the possible side effects of LETAIRIS?

**Serious side effects of LETAIRIS include:**

- **Possible liver injury.** (See "What is the most important information I should know about LETAIRIS?") Call your doctor right away if you have any of these symptoms of liver problems: loss of appetite, nausea, vomiting, fever, unusual tiredness, abdominal (stomach area) pain, yellowing of the skin or the whites of your eyes (jaundice), dark urine, or itching.
- **Serious birth defects.** (See "What is the most important information I should know about LETAIRIS?")
- **Low red blood cell levels** (anemia) can happen during the first weeks after starting LETAIRIS. Your doctor will do blood tests to check your red blood cells before starting LETAIRIS. Your doctor may also do these tests during treatment with LETAIRIS.
- **Swelling all over the body** (fluid retention) can happen within weeks after starting LETAIRIS. Tell your doctor right away if you have any unusual weight gain, tiredness, or trouble breathing while taking LETAIRIS. These may be symptoms of a serious health problem. You may need to be treated with medicine or need to go to the hospital.

- **Sperm count reduction.** Reduced sperm counts have been observed in some men taking a drug similar to LETAIRIS, an effect which might impair their ability to father a child. Tell your doctor if remaining fertile is important to you.

**The most common side effects of LETAIRIS are:**

- Swelling of hands, legs, ankles and feet (peripheral edema)
- Stuffy nose (nasal congestion)
- Inflamed nasal passages (sinusitis)
- Hot flashes or getting red in the face (flushing)
- Feeling your heart beat (palpitations)
- Red and sore throat and nose
- Stomach pain
- Constipation
- Shortness of breath
- Headache

Tell your doctor if you have any side effect that bothers you or that does not go away. These are not all of the possible side effects of LETAIRIS. For more information, ask your doctor or pharmacist.

Call your doctor for medical advice about side effects. You may report side effects to FDA at 1-800-FDA-1088.

**How should I store LETAIRIS?**

Store LETAIRIS at 59 °F to 86 °F (15 °C to 30 °C), in the package it comes in.

**Keep LETAIRIS and all medicines out of the reach of children.**

**General information about LETAIRIS**

Medicines are sometimes prescribed for purposes other than those listed in a Medication Guide. Do not use LETAIRIS for a condition for which it was not prescribed. Do not give LETAIRIS to other people, even if they have the same symptoms that you have. It may harm them.

This Medication Guide summarizes the most important information about LETAIRIS. If you would like more information, ask your doctor. You can ask your doctor or pharmacist for information about LETAIRIS that is written for healthcare professionals.

**For more information, call 1-866-664-LEAP (5327) or visit [www.letairis.com](http://www.letairis.com) or [www.gilead.com](http://www.gilead.com).**

**What are the ingredients in LETAIRIS?**

**Active ingredient:** ambrisentan

**Inactive Ingredients:** croscarmellose sodium, lactose monohydrate, magnesium stearate and microcrystalline cellulose. The tablets are film-coated with a coating material containing FD&C Red #40 aluminum lake, lecithin, polyethylene glycol, polyvinyl alcohol, talc, and titanium dioxide.

Revised October 2010

This Medication Guide has been approved by the U.S. Food and Drug Administration.

Gilead Sciences, Inc., Foster City, CA 94404

LETAIRIS is a registered trademark of Gilead Sciences, Inc. Gilead and the Gilead logo are trademarks of Gilead Sciences, Inc. Other brands noted herein are the property of their respective owners.

© 2010 Gilead Sciences, Inc.

GS22-081-006